

41 SOUTH BUSINESS PARK

SECTION 17, TOWNSHIP 4 SOUTH, RANGE 17 EAST,
COLUMBIA COUNTY, FLORIDA

PLAT BOOK 9
PAGES 155
SHEET 2 OF 2

POINT OF COMMENCEMENT
NW CORNER OF SECTION 17

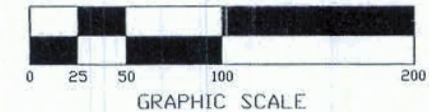
CURVE TABLE

NO.	RADIUS	DELTA	ARC	TANGENT	CHORD	CHORD BEARING
1	2.00'	90°00'00"	39.27'	25.00'	35.36'	S.81°04'45"E.
2	2.00'	90°00'00"	39.27'	25.00'	35.36'	S.08°55'15"W.
3	2.00'	31°57'45"	111.57'	57.28'	110.13'	S.69°54'08"W.
4	2.00'	31°57'45"	128.31'	65.87'	126.65'	S.69°54'08"W.
5	2.00'	31°57'45"	145.04'	74.46'	143.17'	S.69°54'08"W.
6	2.00'	46°23'53"	210.55'	111.43'	204.84'	N.70°55'04"W.
7	2.00'	25°01'17"	100.44'	51.04'	99.65'	N.81°36'36"W.
8	2.00'	21°22'36"	85.81'	43.41'	85.32'	N.58°24'09"W.
9	2.00'	70°31'44"	36.93'	21.21'	34.64'	N.12°27'16"W.
10	2.00'	114°48'42"	120.23'	93.84'	101.10'	N.34°35'45"W.
11	2.00'	135°43'02"	142.12'	147.46'	111.15'	S.20°08'23"W.
12	2.00'	28°53'12"	146.21'	74.69'	144.66'	S.62°09'43"E.
13	2.00'	17°30'41"	88.63'	44.66'	88.29'	S.85°21'40"E.

LINE TABLE

Line	Bearing	Distance
L1	N.15°27'23"W.	71.19'
L2	N.07°52'22"E.	53.43'
L3	N.28°35'03"E.	57.45'
L4	N.02°45'03"W.	63.66'
L5	N.22°57'37"W.	82.53'
L6	N.02°10'09"E.	59.34'
L7	N.34°28'31"E.	68.25'
L8	S.45°22'05"E.	49.71'
L9	S.46°31'35"E.	41.71'
L10	S.51°55'25"E.	77.77'
L11	S.44°44'52"E.	87.83'

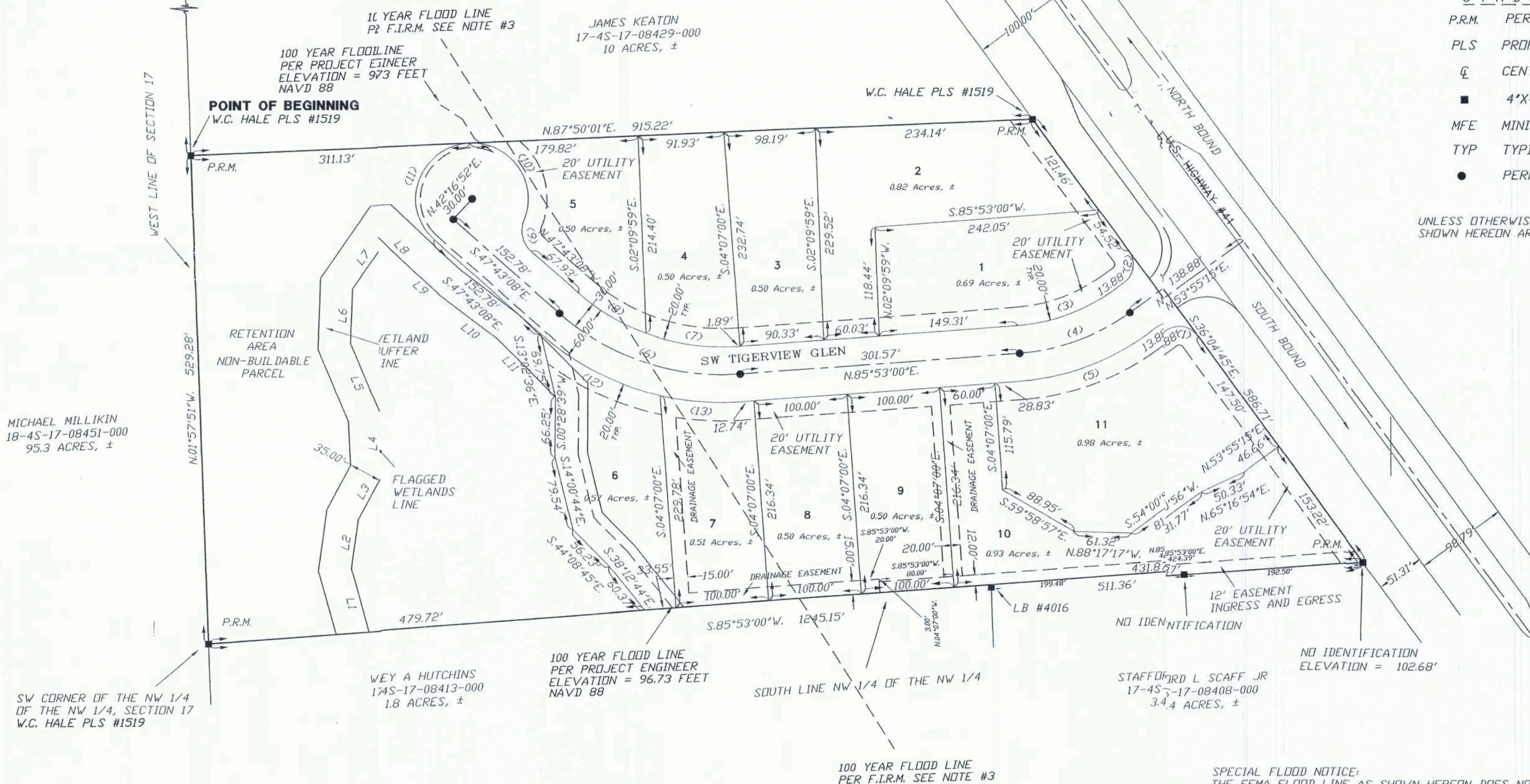
SCALE: 1" = 100'



SYMBOL LEGEND:

- P.R.M. PERMANENT REFERENCE MONUMENT
- PLS PROFESSIONAL LAND SURVEYOR
- CL CENTERLINE
- 4"X4" CONCRETE MONUMENT
- MFE MINIMUM FLOOR ELEVATION
- TYP TYPICAL
- PERMANENT CONTROL POINT

UNLESS OTHERWISE SHOWN HEREON ALL CORNERS SHOWN HEREON ARE L.S. BRITT PLS #5757



SPECIAL FLOOD NOTICE:
THE FEMA FLOOD LINE AS SHOWN HEREON DOES NOT REFLECT THE FILL DIRT PLACED ON THESE PARCELS AS PER THE CONSTRUCTION PLANS AND PERMITTED BY THE SUWANNEE RIVER WATER MANAGEMENT DISTRICT AGENCY.

DEVELOPER:

RFJ PROPERTIES, INC.
934 N.E. LAKE DESOTO CIRCLE
LAKE CITY, FLORIDA, 32055
386-755-3456

PROJECT ENGINEER:

JOEY HAWKINS
6855 W. ELIM CHURCH ROAD
FORT WITE, FLORIDA, 32038
386-755-2295

NOTICE:

THIS PLAT AS RECORDED IN ITS GRAPHICAL FORM, IS THE OFFICIAL DEPICTION OF THE SUBDIVIDED LANDS DESCRIBED HEREIN AND WILL IN NO CIRCUMSTANCES BE SUPPLANTED IN AUTHORITY BY OTHER GRAPHICAL OR DIGITAL FORM OF THE PLAT. THERE MAY BE ADDITIONAL RESTRICTIONS THAT ARE NOT RECORDED ON THIS PLAT THAT MAY BE FOUND IN THE PUBLIC RECORDS OF THIS COUNTY.



**BRITT SURVEYING
& ASSOCIATES, INC.**

LAND SURVEYORS AND MAPPERS

830 WEST DUVAL STREET LAKE CITY, FLORIDA 32055
(386)752-7163 FAX (386)752-5573

WORK ORDER # L- 17127