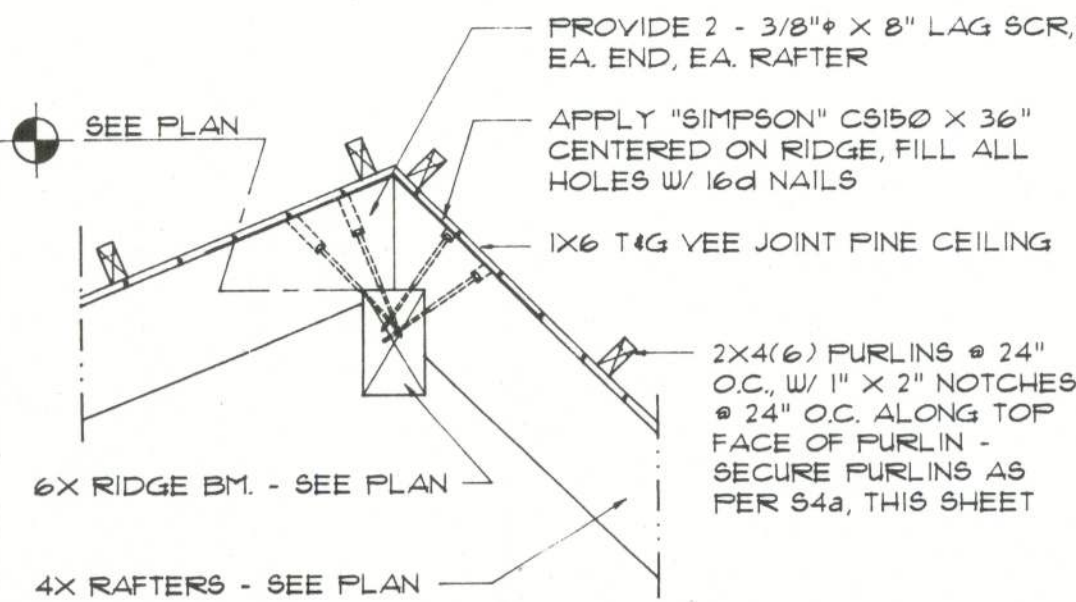


NOTE:
UNLESS NOTED OTHERWISE, NOMINAL ELEVATION @ TOP OF LOG
WALLS IS AS FOLLOWS FOR 6\"/>

Rafter DETAIL LOWER END

SCALE: 3/4\"/>

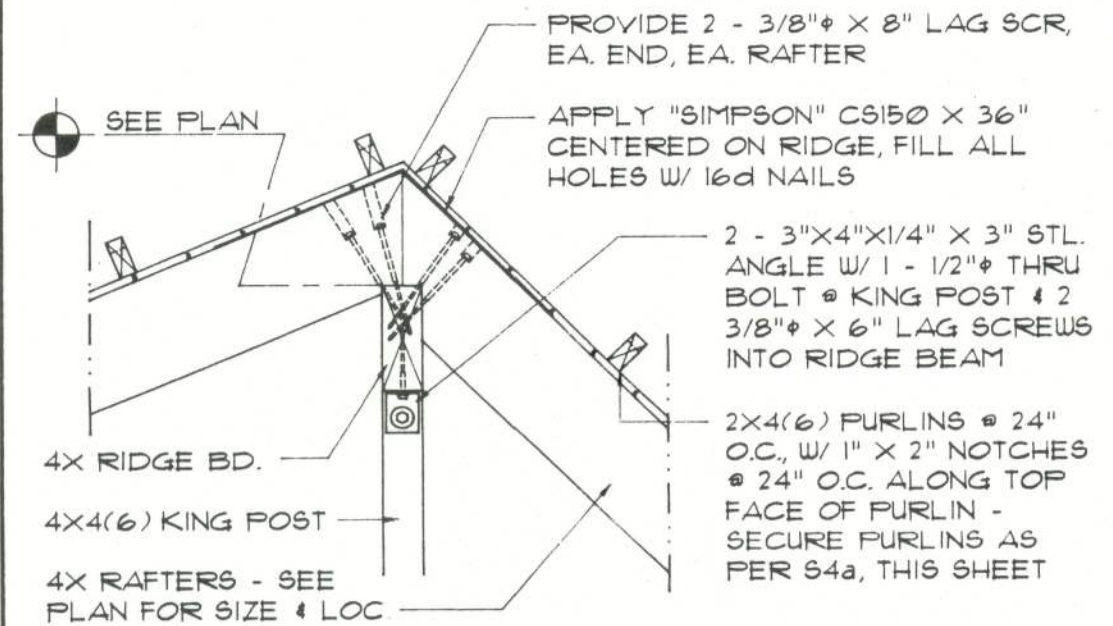
A.1



Rafter DETAIL RIDGE BEAM

SCALE: 3/4\"/>

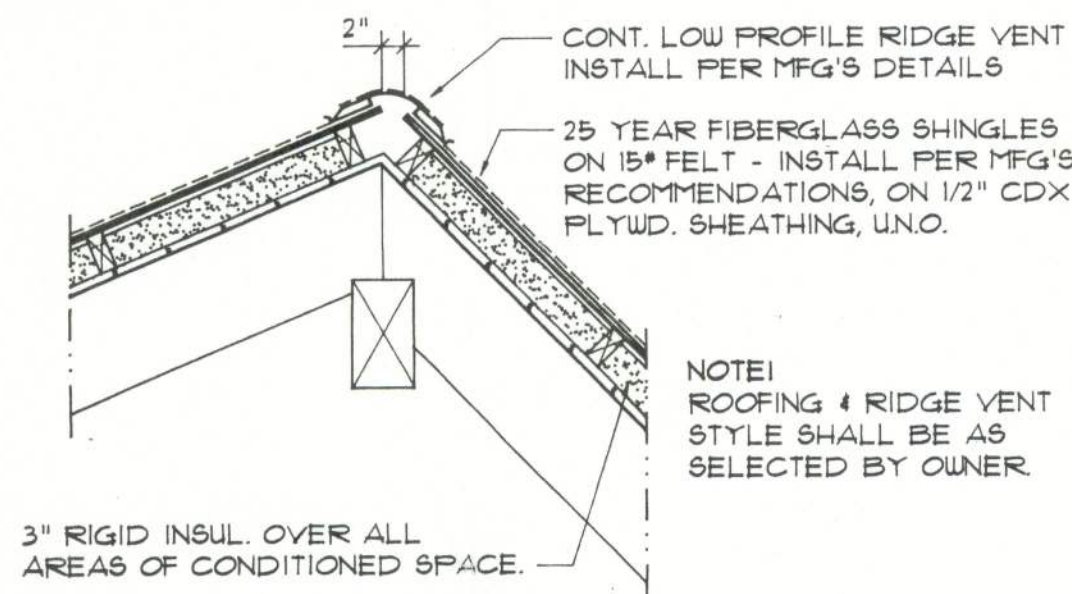
B.1



Rafter DETAIL COLLAR TIES

SCALE: 3/4\"/>

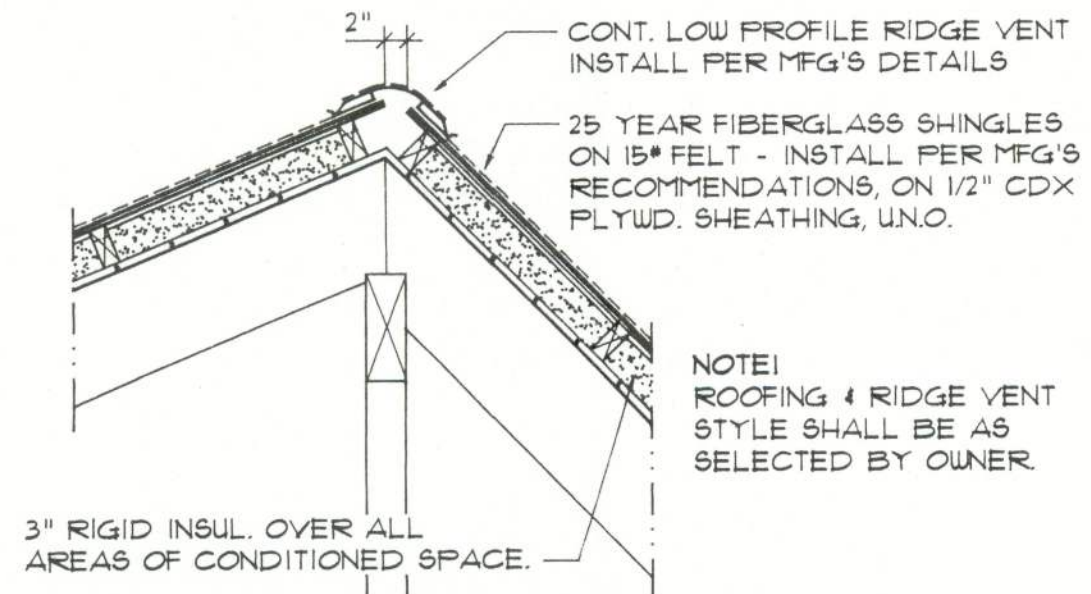
C.1



Rafter DETAIL RIDGE BEAM

SCALE: 3/4\"/>

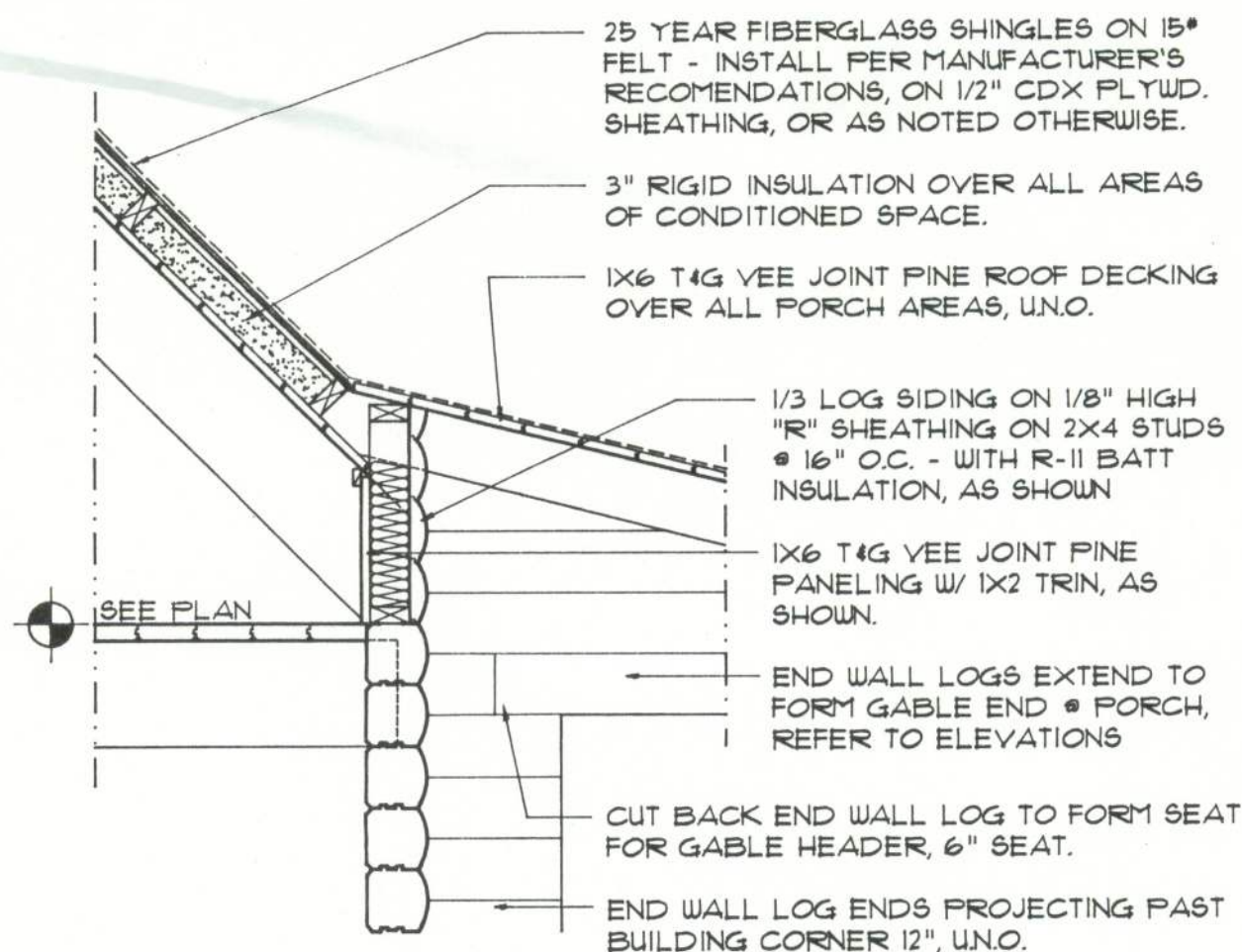
B.2



Rafter DETAIL COLLAR TIES

SCALE: 3/4\"/>

C.2

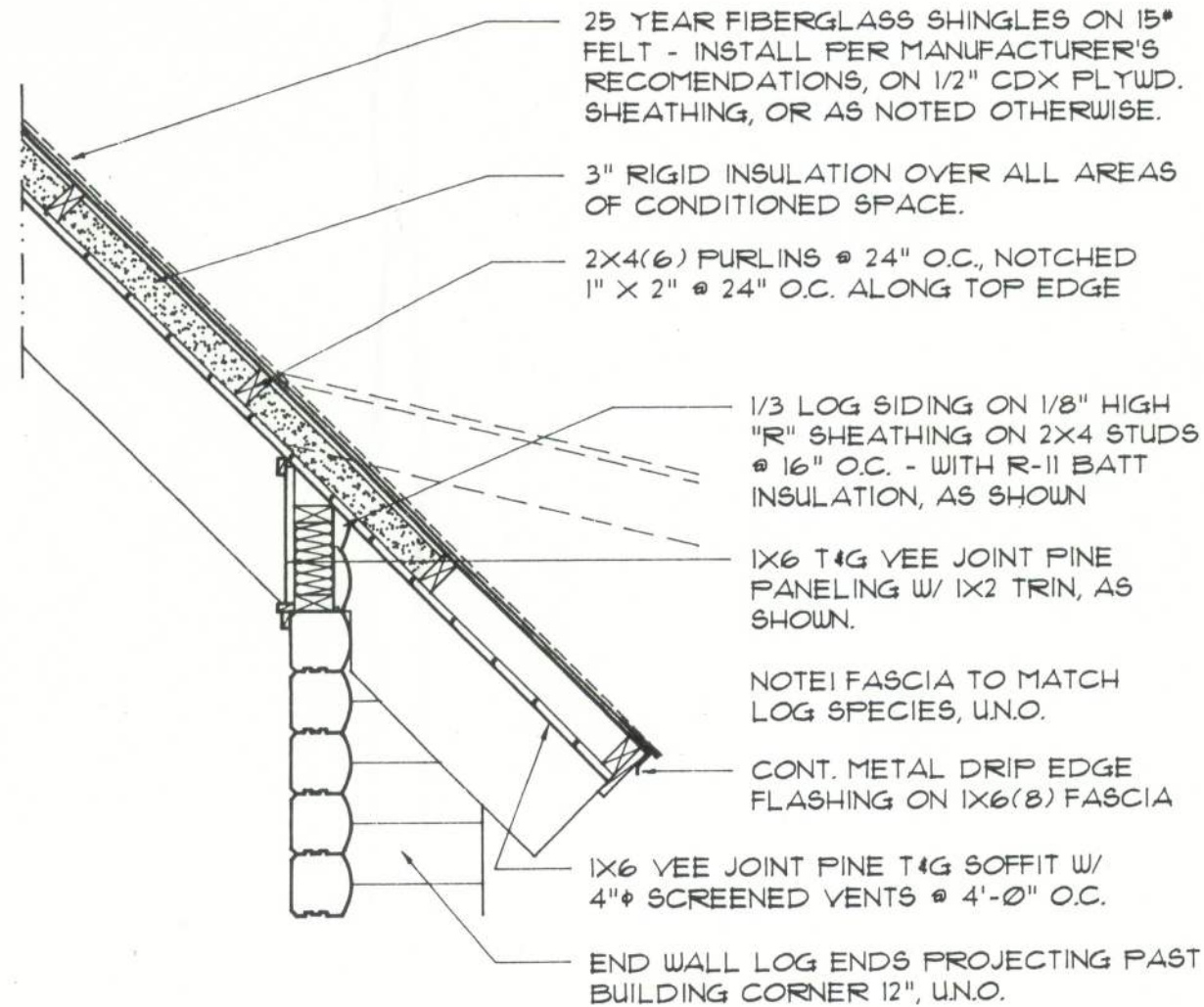


NOTE:
INSTALL 4\"/>

Rafter DETAIL LOWER END

SCALE: 3/4\"/>

A.2



Rafter DETAIL LOWER END

SCALE: 3/4\"/>

D

GENERAL FRAMING NOTES:

1. CUT ALL JOINTS TRUE AND PLUMB, INCLUDING RAFTER SEATS AND "BIRDMOUTH" NOTCHING AT RIDGE BEAMS OR BOARDS AND LOG WALLS.
2. BORE ALL HOLES FOR THRU-BOLTS PLUMB AND TRUE, OF A SIZE 1/16\"/>

Custom Log Home Standard Details: ROOF FRAMING DETAILS



Manufacturers
Specializing in Cypress & Cedar Custom Homes
4345 HIGHWAY 90, WELLBORN, FLORIDA 32094
904.963.1035 / 1.800.362.1035

SHEET: D.7a

REVISION:

DRAWN: NPG

DATE: 2/DEC/94
CONT: SRLH

THIS DOCUMENT IS A STANDARD DETAIL FOR LOG HOMES. IT IS NOT TO BE USED FOR ANY OTHER PURPOSE. THE USER IS RESPONSIBLE FOR ANY MODIFICATIONS TO THIS DETAIL. THE USER IS RESPONSIBLE FOR ANY MODIFICATIONS TO THIS DETAIL. THE USER IS RESPONSIBLE FOR ANY MODIFICATIONS TO THIS DETAIL.