

Alpine, an ITW Company
155 Harlem Ave
North Building, 4th Floor
Glenview, IL 60025
Phone: (800)755-6001
www.alpineitw.com

COA #0 278
Florida Certificate of Product Approval #FL1999
10/02/2024

This item has been digitally signed by Douglas Fleming on the date adjacent to the seal.

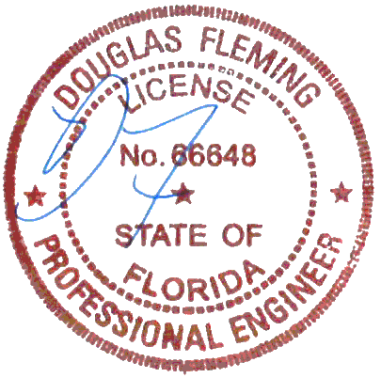
Printed copies of this document are not considered signed and sealed and the signature must be verified on any electronic copies.

| Site Information: | Page 1: |
|---|-------------------|
| Customer: Duley Truss, Inc. | Job Number: X1611 |
| Job Description: MURDOCK, ROBBIE | |
| Address: 312 GEMINI GLN, Fort White, FL 32038 | |

| Job Engineering Criteria: | |
|--|---|
| Design Code: FBC 8th Ed. 2023 Res. | IntelliVIEW Version: 24.01.03 JRef #: 1Y3R23270001 |
| Wind Standard: ASCE 7-22 Wind Speed (mph): 140 Building Type: Closed | Design Loading (psf): 37.00 |

This package contains general notes pages, 2 truss drawing(s) and 2 detail(s).

| Item | Drawing Number | Truss | Item | Drawing Number | Truss |
|------|-------------------|-------|------|-------------------|-------|
| 1 | 276.24.0753.21753 | T1 | 2 | 276.24.0753.23787 | T2 |
| 3 | BRCLBSUB0119 | | 4 | 160TL | |



COA #0 278
Florida Certificate of Product Approval #FL1999
10/02/2024

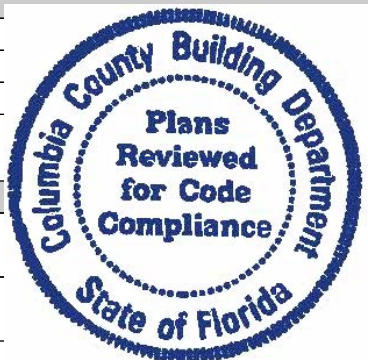
Alpine, an ITW Company
155 Harlem Ave
North Building, 4th Floor
Glenview, IL 60025
Phone: (800)755-6001
www.alpineitw.com

This item has been digitally signed by Douglas Fleming on the date adjacent to the seal.

Printed copies of this document are not considered signed and sealed and the signature must be verified on any electronic copies.

| Site Information: | | Page 1: |
|---|--|-------------------|
| Customer: Duley Truss, Inc. | | Job Number: X1611 |
| Job Description: MURDOCK, ROBBIE | | |
| Address: 312 GEMINI GLN, Fort White, FL 32038 | | |

| Job Engineering Criteria: | | |
|------------------------------------|-----------------------|-------------------------------|
| Design Code: FBC 8th Ed. 2023 Res. | | IntelliVIEW Version: 24.01.03 |
| | | JRef #: 1Y3R23270001 |
| Wind Standard: ASCE 7-22 | Wind Speed (mph): 140 | Design Loading (psf): 37.00 |
| Building Type: Closed | | |



This package contains general notes pages, 2 truss drawing(s) and 2 detail(s).

| Item | Drawing Number | Truss |
|------|-------------------|-------|
| 1 | 276.24.0753.21753 | T1 |
| 3 | BRCLBSUB0119 | |

| Item | Drawing Number | Truss |
|------|-------------------|-------|
| 2 | 276.24.0753.23787 | T2 |
| 4 | 160TL | |

General Notes

Truss Design Engineer Scope of Work, Design Assumptions and Design Responsibilities:

The design responsibilities assumed in the preparation of these design drawings are those specified in ANSI/TPI 1, Chapter 2; and the National Design Standard for Metal Plate Connected Wood Truss Construction, by the Truss Plate Institute. The truss component designs conform to the applicable provisions of ANSI/TPI 1 and NDS, the National Design Specification for Wood Construction by AWC. The truss component designs are based on the specified loading and dimension information furnished by others to the Truss Design Engineer. The Truss Design Engineer has no duty to independently verify the accuracy or completeness of the information provided by others and may rely on that information without liability. The responsibility for verification of that information remains with others neither employed nor controlled by the Truss Design Engineer. The Truss Design Engineer's seal and signature on the attached drawings, or cover page listing these drawings, indicates acceptance of professional engineering responsibility solely for the truss component designs and not for the technical information furnished by others which technical information and consequences thereof remain their sole responsibility.

The suitability and use of these drawings for any particular structure is the responsibility of the Building Designer in accordance with ANSI/TPI 1 Chapter 2. The Building Designer is responsible for determining that the dimensions and loads for each truss component match those required by the plans and by the actual use of the individual component, and for ascertaining that the loads shown on the drawings meet or exceed applicable building code requirements and any additional factors required in the particular application. Truss components using metal connector plates with integral teeth shall not be placed in environments that will cause the moisture content of the wood in which plates are embedded to exceed 19% and/or cause corrosion of connector plates and other metal fasteners.

The Truss Design Engineer shall not be responsible for items beyond the specific scope of the agreed contracted work set forth herein, including but not limited to: verifying the dimensions of the truss component, calculation of any of the truss component design loads, inspection of the truss components before or after installation, the design of temporary or permanent bracing and their attachment required in the roof and/or floor systems, the design of diaphragms or shear walls, the design of load transfer connections to and from diaphragms and shear walls, the design of load transfer to the foundation, the design of connections for truss components to their bearing supports, the design of the bearing supports, installation of the truss components, observation of the truss component installation process, review of truss assembly procedures, sequencing of the truss component installation, construction means and methods, site and/or worker safety in the installation of the truss components and/or its connections.

This document may be a high-quality facsimile of the original engineering document which is a digitally signed electronic file with third party authentication. A wet or embossed seal copy of this engineering document is available upon request.

Temporary Lateral Restraint and Bracing:

Temporary lateral restraint and diagonal bracing shall be installed according to the provisions of BCSI chapters B1, B2, B7 and/or B10 (Building Component Safety Information, by TPI and SBCA), or as specified by the Building Designer or other Registered Design Professional. The required locations for lateral restraint and/or bracing depicted on these drawings are only for the permanent lateral support of the truss members to reduce buckling lengths, and do not apply to and may not be relied upon for the temporary stability of the truss components during their installation.

Permanent Lateral Restraint and Bracing:

The required locations for lateral restraint or bracing depicted on these drawings are for the permanent lateral support of the truss members to reduce buckling lengths. Permanent lateral support shall be installed according to the provisions of BCSI chapters B3, B7 and/or B10, or as specified by the Building Designer or other Registered Design Professional. These drawings do not depict or specify installation/erection bracing, wind bracing, portal bracing or similar building stability bracing which are parts of the overall building design to be specified, designed, and detailed by the Building Designer.

Connector Plate Information:

Alpine connector plates are made of ASTM A653 or ASTM A1063 galvanized steel with the following designations, gauges and grades: W=Wave, 20ga, grade 40; H=High Strength, 20ga, grade 60; S=Super Strength, 18ga, grade 60. Information on model code compliance is contained in the ICC Evaluation Service report ESR-1118, available on-line at www.icc-es.org.

Bearing Information:

The bearing area factor, C_b , is considered for the allowable capacity of solid sawn wood bearings supporting trusses that are located a minimum of 3" from the end of the lumber piece.

General Notes (continued)

Coated Lumber:

Coated lumber must be properly re-dried and maintained below 19% or less moisture level through all stages of construction and usage. Coated lumber has no adjustments to lumber properties. Coated lumber may be more brittle than uncoated lumber. Special handling care must be taken to prevent breakage during all handling activities. Refer to manufacturer literature, specifications, and code evaluation reports for restrictions, details, and requirements.

Fire Retardant Treated Lumber:

Fire retardant treated lumber must be properly re-dried and maintained below 19% or less moisture level through all stages of construction and usage. Fire retardant treated lumber may be more brittle than untreated lumber. Special handling care must be taken to prevent breakage during all handling activities.

Key to Terms:

Information provided on drawings reflects a summary of the pertinent information required for the truss design. Detailed information on load cases, reactions, member lengths, forces and members requiring permanent lateral support may be found in calculation sheets available upon written request.

BCDL = Bottom Chord standard design Dead Load in pounds per square foot.

BCLL = Bottom Chord standard design Live Load in pounds per square foot.

C = Coated lumber.

C-AT = AtTEK coated lumber.

C-FX = FX Lumber Guard coated lumber.

C-TE = TechWood 4400 coated lumber.

CL = Certified lumber.

Des Ld = total of TCLL, TCDL, BCLL and BCDL Design Load in pounds per square foot.

FRT = Fire Retardant Treated lumber.

FRT-BF = Boraflame Fire Retardant Treated lumber

FRT-DB = D-Blaze Fire Retardant Treated lumber.

FRT-DC = Dricon Fire Retardant Treated lumber.

FRT-FP = FirePRO Fire Retardant Treated lumber.

FRT-FL = FlamePRO Fire Retardant Treated lumber.

FRT-FT = FlameTech Fire Retardant Treated lumber.

FRT-ON = OnWood Fire Retardant Treated lumber.

FRT-PG = PYRO-GUARD Fire Retardant Treated lumber.

FRT-PR = ProWood Fire Retardant Treated lumber.

g = green lumber.

HORZ(LL) = maximum Horizontal panel point deflection due to Live Load, in inches.

HORZ(TL) = maximum Horizontal panel point long term deflection in inches, due to Total Load, including creep adjustment.

HPL = additional Horizontal Load added to a truss Piece in pounds per linear foot or pounds.

Ic = Incised lumber.

FJ = Finger Jointed lumber.

L/# = user specified divisor for limiting span/deflection ratio for evaluation of actual L/defl value.

L/defl = ratio of Length between bearings, in inches, divided by the vertical Deflection due to creep, in inches, at the referenced panel point. Reported as 999 if greater than or equal to 999.

Loc = Location, starting location of left end of bearing or panel point (joint) location of deflection.

Max BC CSI = Maximum bending and axial Combined Stress Index for Bottom Chords for all load cases.

Max TC CSI = Maximum bending and axial Combined Stress Index for Top Chords for all load cases.

Max Web CSI = Maximum bending and axial Combined Stress Index for Webs for all load cases.

NCBCLL = Non-Concurrent Bottom Chord design Live Load in pounds per square foot.

PL = additional Load applied at a user specified angle on a truss Piece in pounds per linear foot or pounds.

PLB = additional vertical load added to a Bottom chord Piece of a truss in pounds per linear foot or pounds

PLT = additional vertical load added to a Top chord Piece of a truss in pounds per linear foot or pounds.

PP = Panel Point.

R = maximum downward design Reaction, in pounds, from all specified gravity load cases, at the indicated location (Loc).

-R = maximum upward design Reaction, in pounds, from all specified gravity load cases, at the identified location (Loc).

Rh = maximum horizontal design Reaction in either direction, in pounds, from all specified gravity load cases, at the indicated location (Loc).

RL = maximum horizontal design Reaction in either direction, in pounds, from all specified non-gravity (wind or seismic) load cases, at the indicated location (Loc).

General Notes (continued)

Key to Terms (continued):

Rw = maximum downward design Reaction, in pounds, from all specified non-gravity (wind or seismic) load cases, at the identified location (Loc).

TCDL = Top Chord standard design Dead Load in pounds per square foot.

TCLL = Top Chord standard design Live Load in pounds per square foot.

U = maximum Upward design reaction, in pounds, from all specified non-gravity (wind or seismic) load cases, at the indicated location (Loc).

VERT(CL) = maximum Vertical panel point deflection in inches due to Live Load and Creep Component of Dead Load in inches.

VERT(CTL) = maximum Vertical panel point deflection ratios due to Live Load and Creep Component of Dead Load, and maximum long term Vertical panel point deflection in inches due to Total load, including creep adjustment.

VERT(LL) = maximum Vertical panel point deflection in inches due to Live Load.

VERT(TL) = maximum Vertical panel point long term deflection in inches due to Total load, including creep adjustment.

W = Width of non-hanger bearing, in inches.

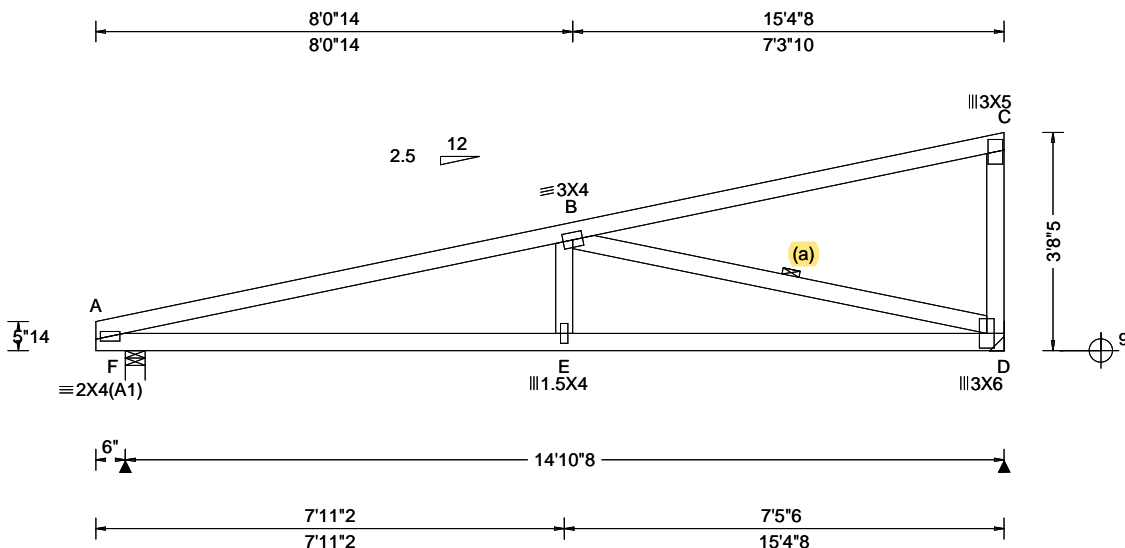
Refer to ASCE-7 for Wind and Seismic abbreviations.

Uppercase Acronyms not explained above are as defined in TPI 1.

References:

1. AWC: American Wood Council; 222 Catoctin Circle SE, Suite 201; Leesburg, VA 20175; www.awc.org.
2. ICC: International Code Council; www.iccsafe.org.
3. Alpine, a division of ITW Building Components Group Inc.: 155 Harlem Ave, North Building, 4th Floor, Glenview, IL 60025; www.alpineitw.com.
4. TPI: Truss Plate Institute, 2670 Crain Highway, Suite 203, Waldorf, MD 20601; www.tpinst.org.
5. SBCA: Wood Truss Council of America, 6300 Enterprise Lane, Madison, WI 53719; www.sbcacomponents.com

| | | | |
|----------------------------------|-------------------|---|---|
| SEQN: 000000009791 MONO FROM: | Ply: 1 Qty: 10 | Job Number: X1611 MURDOCK, ROBBIE Truss Label: T1 | Cust: R 2327 JRef: 1Y3R23270001 T1 DrwNo: 276.24.0753.21753 SSB / DF 10/02/2024 |
|----------------------------------|-------------------|---|---|



| Loading Criteria (psf) | Wind Criteria | Snow Criteria (Pg, Pf in PSF) | Defl/CSI Criteria | Maximum Reactions (lbs) |
|--|---|--|--|---|
| TCLL: 20.00 TCDL: 7.00 BCLL: 0.00 BCDL: 10.00 Des Ld: 37.00 NCBCLL: 10.00 Soffit: 2.00 Load Duration: 1.25 Spacing: 24.0 " | Wind Std: ASCE 7-22 Speed: 140 mph Enclosure: Closed Risk Category: II EXP: C Kzt: NA Mean Height: 15.00 ft TCDL: 4.2 psf BCDL: 5.0 psf MWFRS Parallel Dist: 0 to h/2 C&C Dist a: 3.00 ft Loc. from endwall: Any GCpi: 0.18 Wind Duration: 1.60 | Pg: NA Ct: NA CAT: NA Pf: NA Ce: NA Lu: NA Cs: NA Snow Duration: NA Building Code: FBC 8th Ed. 2023 Res. TPI Std: 2014 Rep Fac: Yes FT/RT: 20(0)/10(0) Plate Type(s): WAVE | PP Deflection in loc L/def L/# VERT(LL): -0.162 E 999 240 VERT(CL): 0.166 E 999 180 HORZ(LL): 0.031 C - - HORZ(TL): 0.035 C - - Creep Factor: 2.0 Max TC CSI: 0.649 Max BC CSI: 0.577 Max Web CSI: 0.406 VIEW Ver: 24.01.03.0909.08 | Gravity Non-Gravity Loc R+ / R- / Rh / Rw / U / RL F 597 -/- /- /281 /160 /132 D 546 -/- /- /261 /182 -/ Wind reactions based on MWFRS F Brg Wid = 4.0 Min Req = 1.5 (Truss) D Brg Wid = - Min Req = - Bearing F is a rigid surface. Members not listed have forces less than 375# Maximum Top Chord Forces Per Ply (lbs) Chords Tens.Comp. A - B 1024 - 1314 |

Lumber

Top chord: 2x4 SP #1;
Bot chord: 2x4 SP #1;
Webs: 2x4 SP #3;

Bracing

(a) Continuous lateral restraint equally spaced on member.

Wind

Member design based on both MWFRS and C&C.

Right end vertical not exposed to wind pressure.

Left cantilever is exposed to wind

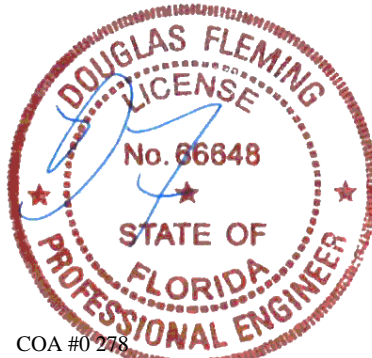
Wind loading based on both gable and hip roof types.

Maximum Bot Chord Forces Per Ply (lbs)

| Chords | Tens.Comp. | Chords | Tens. Comp. |
|--------|-------------|--------|-------------|
| A - E | 2414 - 2056 | E - D | 1239 - 1212 |

Maximum Web Forces Per Ply (lbs)

| Webs | Tens.Comp. |
|-------|-------------|
| B - D | 1232 - 1258 |

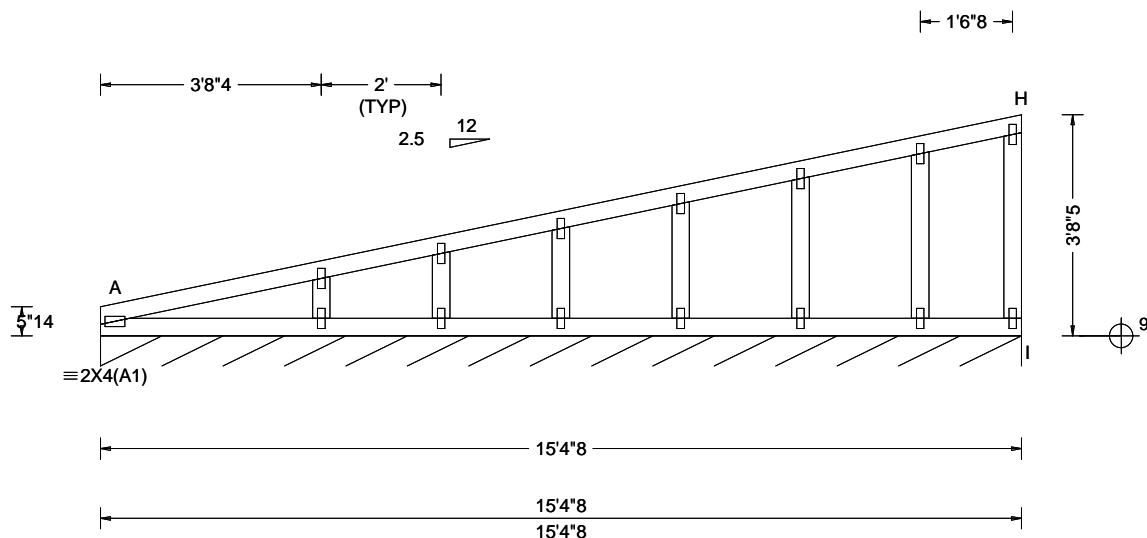


COA #0 278
Florida Certificate of Product Approval #FL1999
10/02/2024

****WARNING**** READ AND FOLLOW ALL NOTES ON THIS DRAWING!
****IMPORTANT**** FURNISH THIS DRAWING TO ALL CONTRACTORS INCLUDING THE INSTALLERS
Trusses require extreme care in fabricating, handling, shipping, installing and bracing. Refer to and follow the latest edition of BCSI (Building Component Safety Information, by TPI and SBCA) for safety practices prior to performing these functions. Installers shall provide temporary bracing per BCSI. Unless noted otherwise, top chord shall have properly attached structural sheathing and bottom chord shall have a properly attached rigid ceiling. Locations shown for permanent lateral restraint of webs shall have continuous lateral restraint (CLR), installed with diagonal bracing installed on the CLR per BCSI sections B3, B7, or B10, as applicable. Apply plates to each face of truss and position as shown above and on the Joint Details, unless noted otherwise. Refer to drawings 160A-Z for standard plate positions. Refer to job's General Notes page for additional information.
Alpine, a division of ITW Building Components Group Inc. shall not be responsible for any deviation from this drawing, any failure to build the truss in conformance with ANSI/TPI 1, or for handling, shipping, installation and bracing of trusses. A seal on this drawing or cover page listing this drawing, indicates acceptance of professional engineering responsibility solely for the design shown. The suitability and use of this drawing for any structure is the responsibility of the Building Designer per ANSI/TPI 1 Sec.2.
For more information see these web sites: Alpine: alpineitw.com; TPI: tpinst.org; SBCA: sbccomponents.com; ICC: iccsafe.org; AWC: awc.org

ALPINE
AN ITW COMPANY
155 Harlem Ave
North Building, 4th Floor
Glenview, IL 60025

| | | | |
|---------------------------------|------------------|---|---|
| SEQN: 00000009792 GABL FROM: | Ply: 1 Qty: 1 | Job Number: X1611 MURDOCK, ROBBIE Truss Label: T2 | Cust: R 2327 JRef: 1Y3R23270001 T2 DrwNo: 276.24.0753.23787 SSB / DF 10/02/2024 |
|---------------------------------|------------------|---|---|



| Loading Criteria (psf) | Wind Criteria | Snow Criteria (Pg,Pf in PSF) | Defl/CSI Criteria | ▲ Maximum Reactions (lbs), or *=PLF |
|--|---|---|--|--|
| TCLL: 20.00 TCDL: 7.00 BCLL: 0.00 BCDL: 10.00 Des Ld: 37.00 NCBCLL: 10.00 Soffit: 2.00 Load Duration: 1.25 Spacing: 24.0 " | Wind Std: ASCE 7-22 Speed: 140 mph Enclosure: Closed Risk Category: II EXP: C Kzt: NA Mean Height: 15.00 ft TCDL: 4.2 psf BCDL: 5.0 psf MWFRS Parallel Dist: 0 to h/2 C&C Dist a: 3.00 ft Loc. from endwall: Any GCpi: 0.18 Wind Duration: 1.60 | Pg: NA Ct: NA CAT: NA Pf: NA Ce: NA Lu: NA Cs: NA Snow Duration: NA Building Code: FBC 8th Ed. 2023 Res. TPI Std: 2014 Rep Fac: Yes FT/RT:20(0)/10(0) Plate Type(s): WAVE | PP Deflection in loc L/defl L/# VERT(LL): -0.004 A 999 240 VERT(CL): 0.003 A 999 180 HORZ(LL): -0.011 H - - HORZ(TL): 0.011 H - - Creep Factor: 2.0 Max TC CSI: 0.103 Max BC CSI: 0.115 Max Web CSI: 0.305 VIEW Ver: 24.01.03.0909.08 | Gravity Non-Gravity Loc R+ / R- / Rh / Rw / U / RL A* 74 /- /- /35 /23 /10 Wind reactions based on MWFRS A Brg Wid = 184 Min Req = - Bearing A is a rigid surface. Members not listed have forces less than 375# |

Lumber

Top chord: 2x4 SP #1;
Bot chord: 2x4 SP #1;
Webs: 2x4 SP #3;

Plating Notes

All plates are 1.5X4 except as noted.

Wind

Member design based on both MWFRS and C&C.

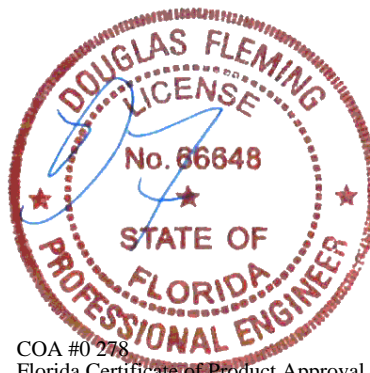
Right end vertical exposed to wind pressure.

Deflection meets L/180.

Wind loading based on both gable and hip roof types.

Additional Notes

Exposed portion of gable face shall be reinforced with sheathing and the wind pressures shall be transferred into lateral diaphragms. Connections and designs for diaphragms is the responsibility of the Building Designer in accordance with ANSI/TPI 1.



COA #0 278
Florida Certificate of Product Approval #FL1999
10/02/2024

****WARNING**** READ AND FOLLOW ALL NOTES ON THIS DRAWING!
****IMPORTANT**** FURNISH THIS DRAWING TO ALL CONTRACTORS INCLUDING THE INSTALLERS
Trusses require extreme care in fabricating, handling, shipping, installing and bracing. Refer to and follow the latest edition of BCSI (Building Component Safety Information, by TPI and SBCA) for safety practices prior to performing these functions. Installers shall provide temporary bracing per BCSI. Unless noted otherwise, top chord shall have properly attached structural sheathing and bottom chord shall have a properly attached rigid ceiling. Locations shown for permanent lateral restraint of webs shall have continuous lateral restraint (CLR), installed with diagonal bracing installed on the CLR per BCSI sections B3, B7, or B10, as applicable. Apply plates to each face of truss and position as shown above and on the Joint Details, unless noted otherwise. Refer to drawings 160A-Z for standard plate positions. Refer to job's General Notes page for additional information.
Alpine, a division of ITW Building Components Group Inc. shall not be responsible for any deviation from this drawing, any failure to build the truss in conformance with ANSI/TPI 1, or for handling, shipping, installation and bracing of trusses. A seal on this drawing or cover page listing this drawing, indicates acceptance of professional engineering responsibility solely for the design shown. The suitability and use of this drawing for any structure is the responsibility of the Building Designer per ANSI/TPI 1 Sec.2.
For more information see these web sites: Alpine: alpineitw.com; TPI: tpinst.org; SBCA: sbccomponents.com; ICC: iccsafe.org; AWC: awc.org

ALPINE
AN ITW COMPANY
155 Harlem Ave
North Building, 4th Floor
Glenview, IL 60025

CLR Reinforcing Member Substitution

This detail is to be used when a Continuous Lateral Restraint (CLR) is specified on a truss design but an alternative web reinforcement method is desired.

Notes:

This detail is only applicable for changing the specified CLR shown on single ply sealed designs to T-reinforcement or L-reinforcement or scab reinforcement.

Alternative reinforcement specified in chart below may be conservative. For minimum alternative reinforcement, re-run design with appropriate reinforcement type.

Use scabs instead of L- or T- reinforcement on webs with intersecting truss joints, such as K-web joints, that may interfere with proper application along the narrow face of the web.

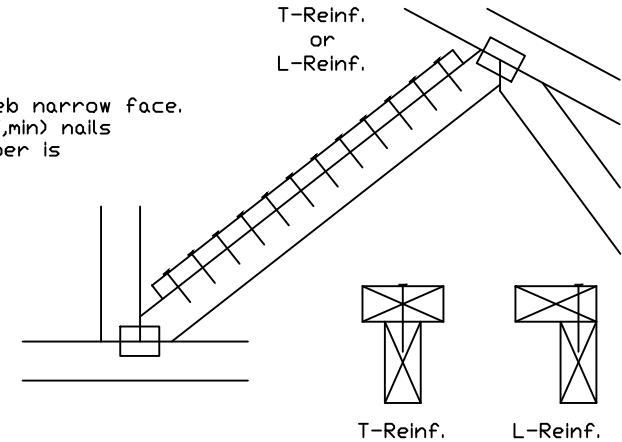
| Web Member Size | Specified CLR Restraint | Alternative Reinforcement T- or L- Reinf. | Scab Reinf. |
|-----------------|-------------------------|---|-------------|
| 2x3 or 2x4 | 1 row | 2x4 | 1-2x4 |
| 2x3 or 2x4 | 2 rows | 2x6 | 2-2x4 |
| 2x6 | 1 row | 2x4 | 1-2x6 |
| 2x6 | 2 rows | 2x6 | 2-2x4(*) |
| 2x8 | 1 row | 2x6 | 1-2x8 |
| 2x8 | 2 rows | 2x6 | 2-2x6(*) |

T-reinforcement, L-reinforcement, or scab reinforcement to be same species and grade or better than web member unless specified otherwise on Engineer's sealed design.

(*) Center scab on wide face of web. Apply (1) scab to each face of web.

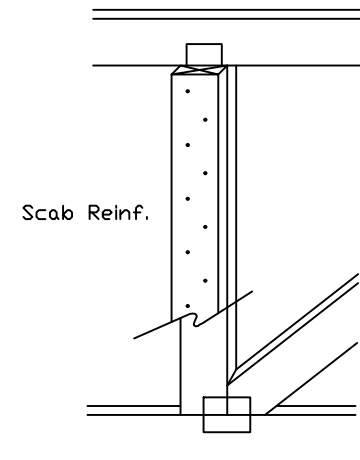
T-Reinforcement or L-Reinforcement:

Apply to either side of web narrow face. Attach with 10d (0.128"x3.0",min) nails at 6" o.c. Reinforcing member is a minimum 80% of web member length.



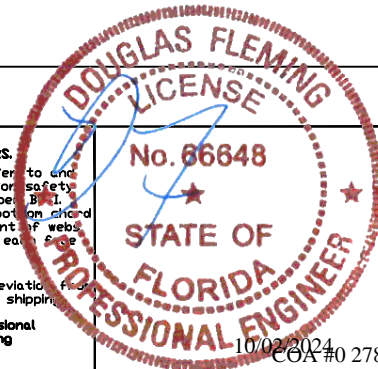
Scab Reinforcement:

Apply scab(s) to wide face of web. No more than (1) scab per face. Attach with 10d (0.128"x3.0",min) nails at 6" o.c. Reinforcing member is a minimum 80% of web member length.



155 Harlem Ave
North Building, 4th Floor
Glenview, IL 60025

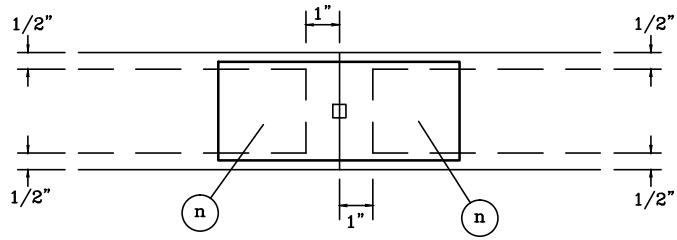
WARNING: READ AND FOLLOW ALL NOTES ON THIS DRAWING
IMPORTANT: FURNISH THIS DRAWING TO ALL CONTRACTORS INCLUDING THE INSTALLERS.
Trusses require extreme care in fabricating, handling, shipping, installing and bracing. Refer to and follow the latest edition of BCSI (Building Component Safety Information, by TPI and SBCA) for safety practices prior to performing these functions. Installers shall provide temporary bracing per BCSI. Unless noted otherwise, top chord shall have properly attached structural sheathing and bottom chord shall have a properly attached rigid ceiling. Locations shown for permanent lateral restraint of webs shall have bracing installed per BCSI sections B3, B7 or B10, as applicable. Apply plates to each face of truss and position as shown above and on the Joint Details, unless noted otherwise. Refer to drawings 160A-Z for standard plate positions.
Alpine, a division of ITW Building Components Group Inc. shall not be responsible for any deviation from this drawing, any failure to build the truss in conformance with ANSI/TPI 1, or for handling, shipping, installation & bracing of trusses.
A seal on this drawing or cover page listing this drawing, indicates acceptance of professional engineering responsibility solely for the design shown. The suitability and use of this drawing for any structure is the responsibility of the Building Designer per ANSI/TPI 1 Sec.2.
For more information see this job's general notes page and these web sites:
ALPINE: www.alpineitw.com; TPI: www.tpinst.org; SBCA: www.sbcacomponents.com; ICC: www.iccsafe.org



| | | |
|-----------|-----|-------------------|
| TC LL | PSF | REF CLR Subst. |
| TC DL | PSF | DATE 01/02/19 |
| BC DL | PSF | DRWG BRCLBSUB0119 |
| BC LL | PSF | |
| TOT. LD. | PSF | |
| DUR. FAC. | | |
| SPACING | | |

TRULOX INFORMATION DETAIL

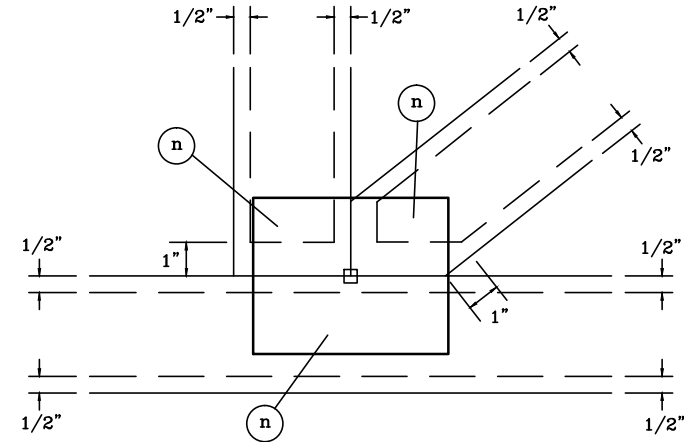
TYPICAL OFF PANEL SPLICE



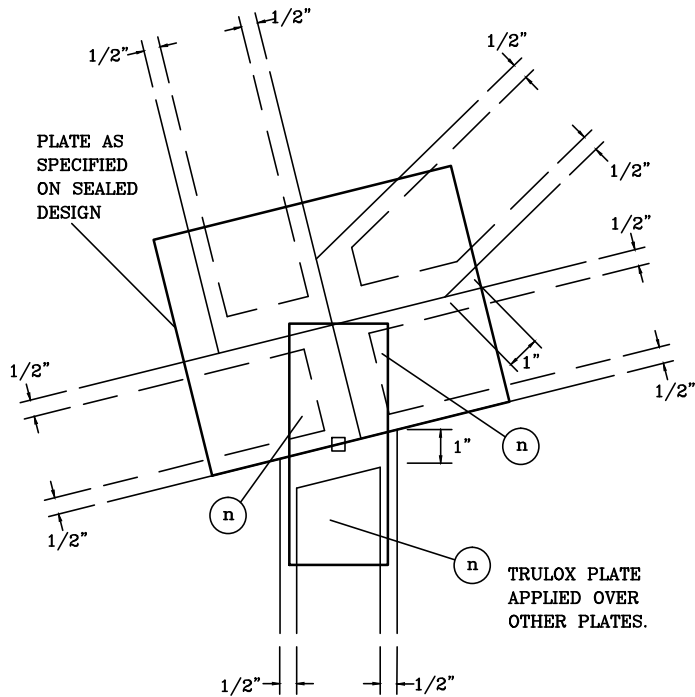
DO NOT APPLY NAILS WITHIN 1/2" OF LUMBER EDGES OR 1" OF LUMBER ENDS ON EACH FACE, AS SHOWN BY DASHED LINES.

NAILS MUST NOT SPLIT LUMBER.

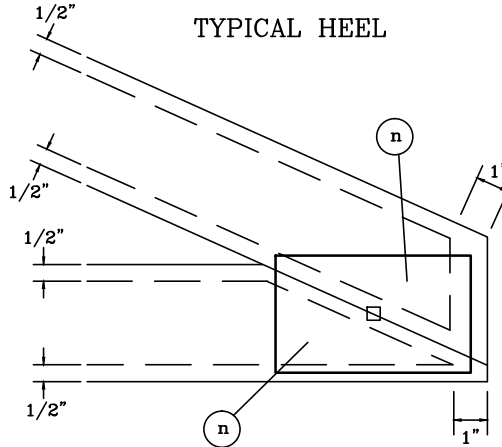
TYPICAL PANEL POINT WITHOUT SPLICE



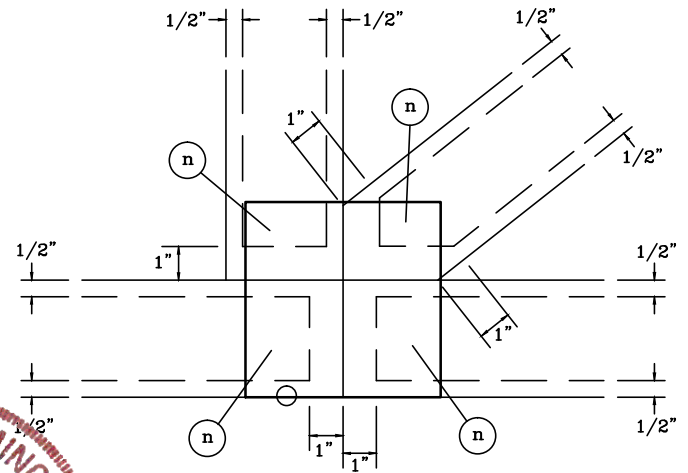
TYPICAL FILLER



TYPICAL HEEL



TYPICAL PANEL POINT SPLICE

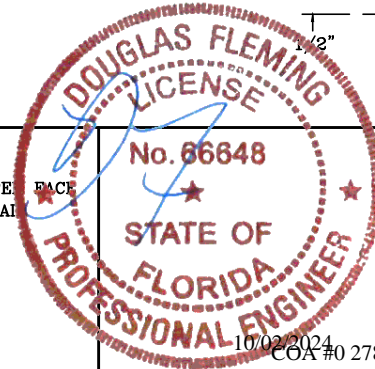


NOTES:

- (n) IS THE REQUIRED NUMBER OF 0.120" X 1.375" NAILS, OR EQUAL, PER PLY AS SPECIFIED ON THE SEALED DESIGN REFERENCING THIS DETAIL.
- LOCATES PLATE CORNER OR FLUSH EDGE.
- LOCATES PLATE CENTER.



155 Harlem Ave
North Building, 4th Floor
Glenview, IL 60025



TRULOX PLATING

160
TL

PAGE 1 OF 1

DATE 10/01/14