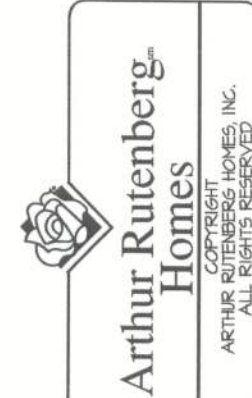


# FRAMING PLAN DISCLAIMER

THE FRAMING PLANS REPRESENTED IN THESE DRAWINGS ARE INTENDED TO ESTABLISH PROPOSED FRAMING MEMBER LOCATIONS, FRAMING MEMBER DEPTH, POTENTIAL BEARING LOCATIONS AND ELEVATIONS, AND IS IN NO WAY INTENDED TO BE INTERPRETED AS STRUCTURAL ENGINEERED DRAWINGS. THE CONTRACTOR (BUILDER) SHALL ENSURE THAT THE STRUCTURE CONFORMS TO THOSE STANDARDS IN ALL RESPECTS INCLUDING STRENGTH, STIFFNESS, STRAINS, LOADS, CONNECTIONS, AND STABILITY. REFER TO PLAN DISCLAIMER LOCATED ON THIS SHEET FOR ADDITIONAL STIPULATIONS AND REQUIREMENTS.



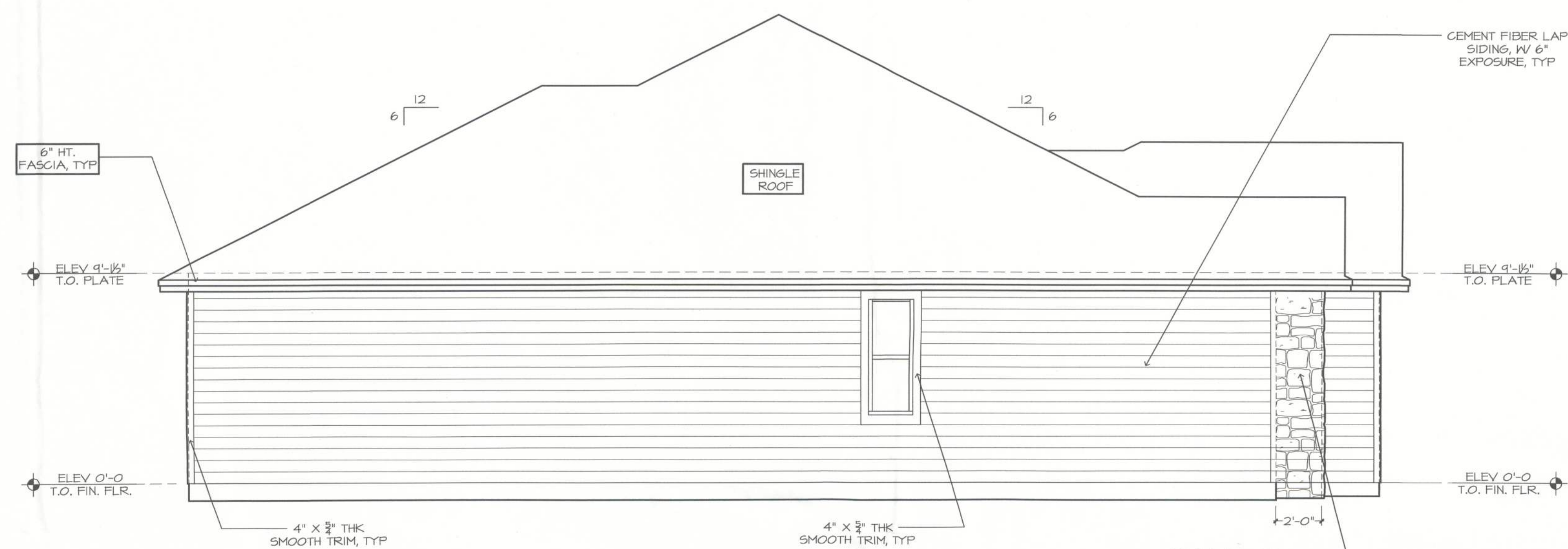
01/26/22 B.M. - A

ARTHUR RUTENBERG HOMES, INC. THE FRAMING PLANS REPRESENTED IN THESE DRAWINGS ARE INTENDED TO ESTABLISH PROPOSED FRAMING MEMBER LOCATIONS, FRAMING MEMBER DEPTH, POTENTIAL BEARING LOCATIONS AND ELEVATIONS, AND IS IN NO WAY INTENDED TO BE INTERPRETED AS STRUCTURAL ENGINEERED DRAWINGS. THE CONTRACTOR (BUILDER) SHALL ENSURE THAT THE STRUCTURE CONFORMS TO THOSE STANDARDS IN ALL RESPECTS INCLUDING STRENGTH, STIFFNESS, STRAINS, LOADS, CONNECTIONS, AND STABILITY. REFER TO PLAN DISCLAIMER LOCATED ON THIS SHEET FOR ADDITIONAL STIPULATIONS AND REQUIREMENTS.

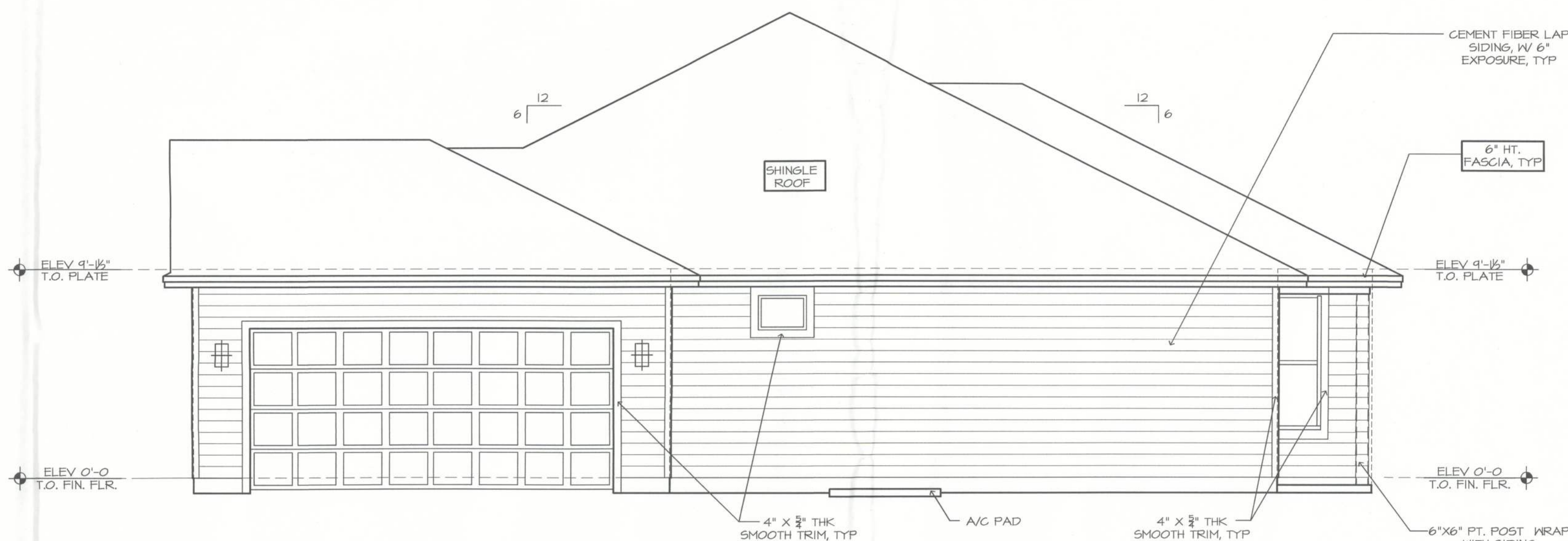
THE CLOVER 1144F - COLEMAN RESIDENCE  
BUILDER: BRYAN ZECHER HOMES, INC.  
LAKE CITY, FLORIDA  
AN INDEPENDENTLY OWNED AND OPERATED FRANCHISE

EXTERIOR ELEVATIONS 1/4" = 1'-0"  
PLAN 1144F-2F-01-1C  
TRADITIONAL

6a



SIDE ELEVATION



GARAGE SIDE ELEVATION