



CODE INFORMATION	
CODE VERSION	FBC 2020 7th Edition, ASCE-7-16
MANUFACTURER	CARPORTS ANYWHERE
BUILDING TYPE	UTILITY STRUCTURE
CONSTRUCTION TYPE	II-B
RISK CATEGORY	II
FIRE PROTECTION	NONE
FIRE SUPPRESSION SYSTEM	NONE
OCCUPANCY	UTILITY, U
WIND SPEED	Vult-140mph
EXPOSURE	B
ENCLOSURE	ENCLOSED/OPEN
INTERNAL PRESSURE COEFF.	+/- 0.18/0.0
IMPORTANCE FACTOR	1.0
ROOF DEAD LOAD	10PSF
ROOF LIVE LOAD	20PSF OR 300lb P.L.
FLOOR DEAD LOAD	10PSF
FLOOR LIVE LOAD	50PSF
"R"RATING OF WALLS,FLOOR,ROOF	N/A BY OTHERS
MODULES PER BUILDING	1
HURRICANE PROTECTION USAGE	NO
HURRICANE SHELTER USAGE	NO
SQUARE FOOTAGE	2,280 SQ. FT.

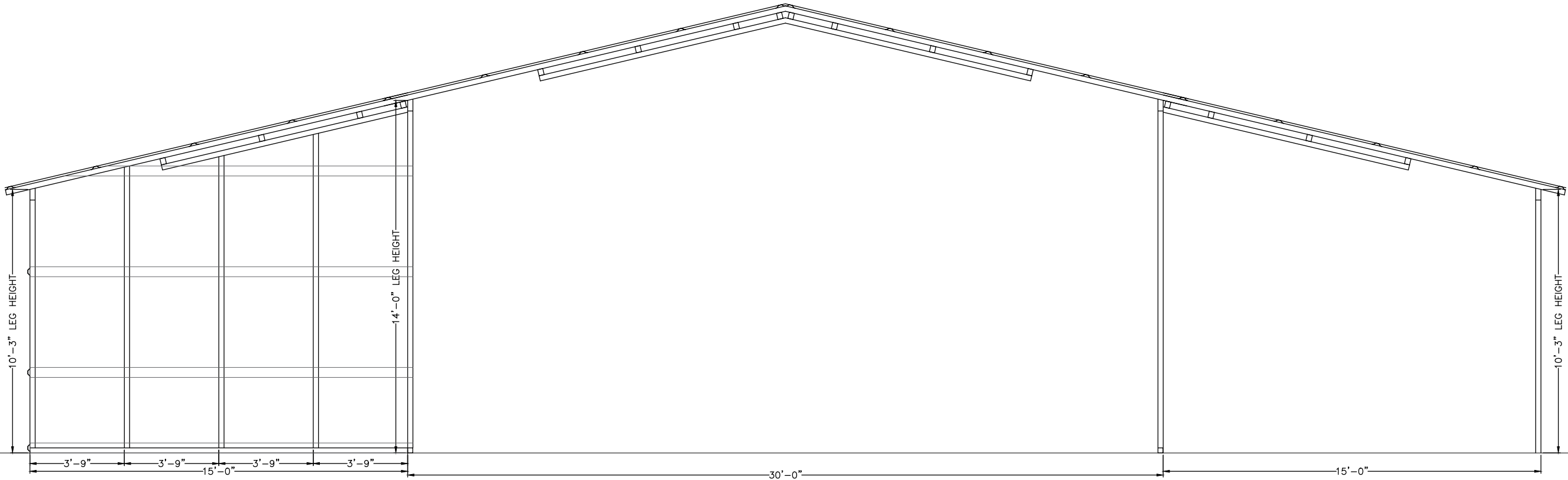
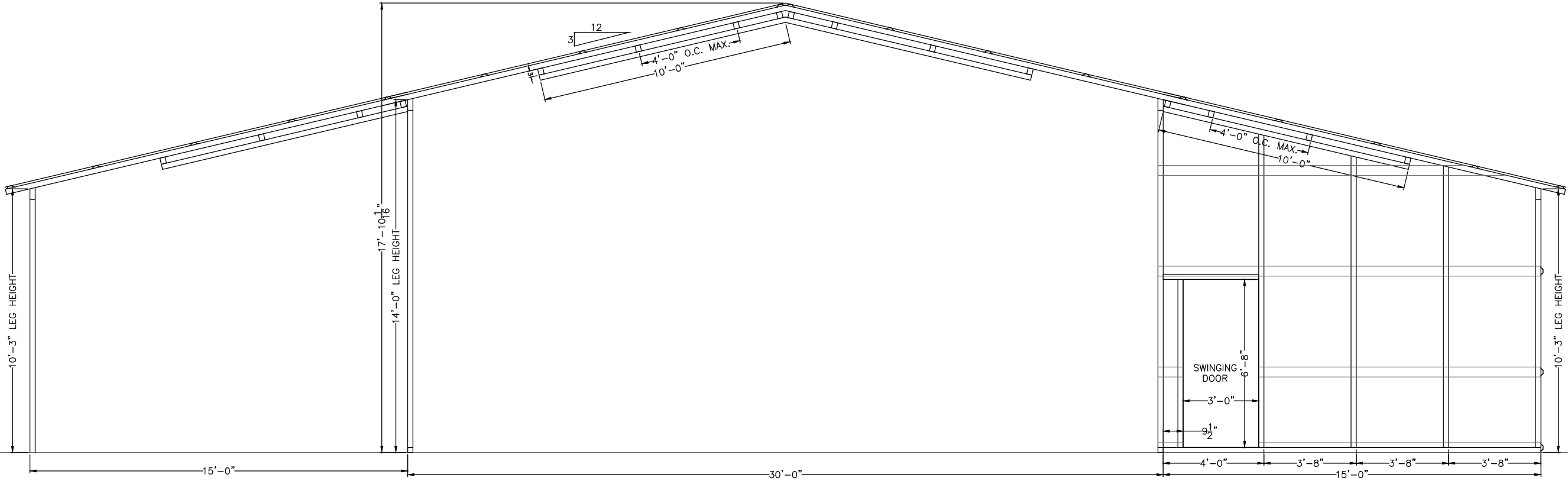
REVISIONS			
REV	DESCRIPTION	DATE	BY
1	MAIN OPEN	3/3/22	MTB
2	LEFT WALL	3/3/22	MTB
3	FOOTERS/SLAB	3/15/22	MTB

DRAWN BY:	MTB
DATE:	2/9/22
LOCATION:	743 SW Central Terr, Fort White
SIZE:	38'L X 60'W X 14'H

TITLE: END FRAMING VIEWS

Matthew T. Baldwin P.E.
Florida License #64608

Sheet: CA-2 OF 6



THIS ITEM HAS BEEN DIGITALLY SIGNED AND SEALED BY MATTHEW BALDWIN, PE, ON 3/15/2022. PRINTED COPIES OF THIS DOCUMENT ARE NOT CONSIDERED SIGNED AND SEALED AND THE SHA AUTHENTICATION CODE MUST BE VERIFIED ON ANY ELECTRONIC COPIES



CODE INFORMATION

CODE VERSION	FBC 2020 7th Edition, ASCE-7-16
MANUFACTURER	CARPORTS ANYWHERE
BUILDING TYPE	UTILITY STRUCTURE
CONSTRUCTION TYPE	II-B
RISK CATEGORY	II
FIRE PROTECTION	NONE
FIRE SUPPRESSION SYSTEM	NONE
OCCUPANCY	UTILITY, U
WIND SPEED	Vult-140mph
EXPOSURE	B
ENCLOSURE	ENCLOSED/OPEN
INTERNAL PRESSURE COEFF.	+/- 0.18/0.0
IMPORTANCE FACTOR	1.0
ROOF DEAD LOAD	10PSF
ROOF LIVE LOAD	20PSF OR 300lb P.L.
FLOOR DEAD LOAD	10PSF
FLOOR LIVE LOAD	50PSF
"R" RATING OF WALLS, FLOOR, ROOF	N/A BY OTHERS
MODULES PER BUILDING	1
HURRICANE PROTECTION USAGE	NO
HURRICANE SHELTER USAGE	NO
SQUARE FOOTAGE	2,280 SQ. FT.

REVISIONS

REV	DESCRIPTION	DATE	BY
1	MAIN OPEN	3/3/22	MTB
2	LEFT WALL	3/3/22	MTB
3	FOOTERS/SLAB	3/15/22	MTB

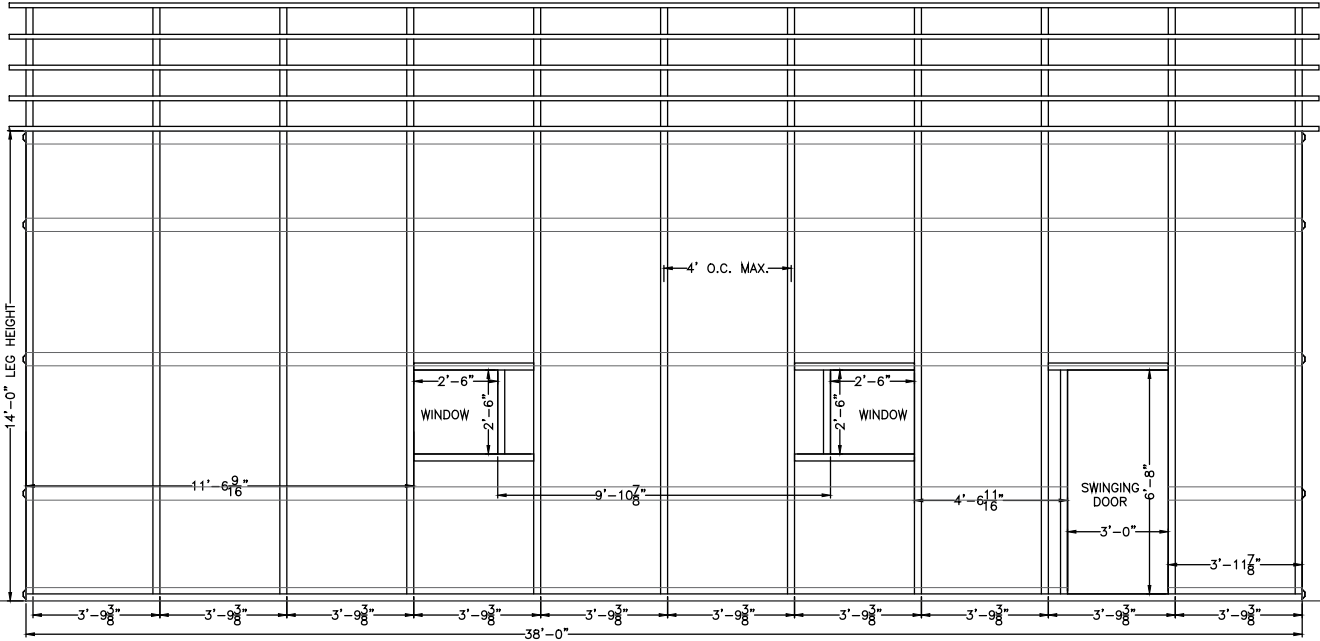
DRAWN BY:	MTB
DATE:	2/9/22
LOCATION:	743 SW Central Terr, Fort White
SIZE:	38'L X 60'W X 14'H

TITLE: SIDE FRAMING VIEWS

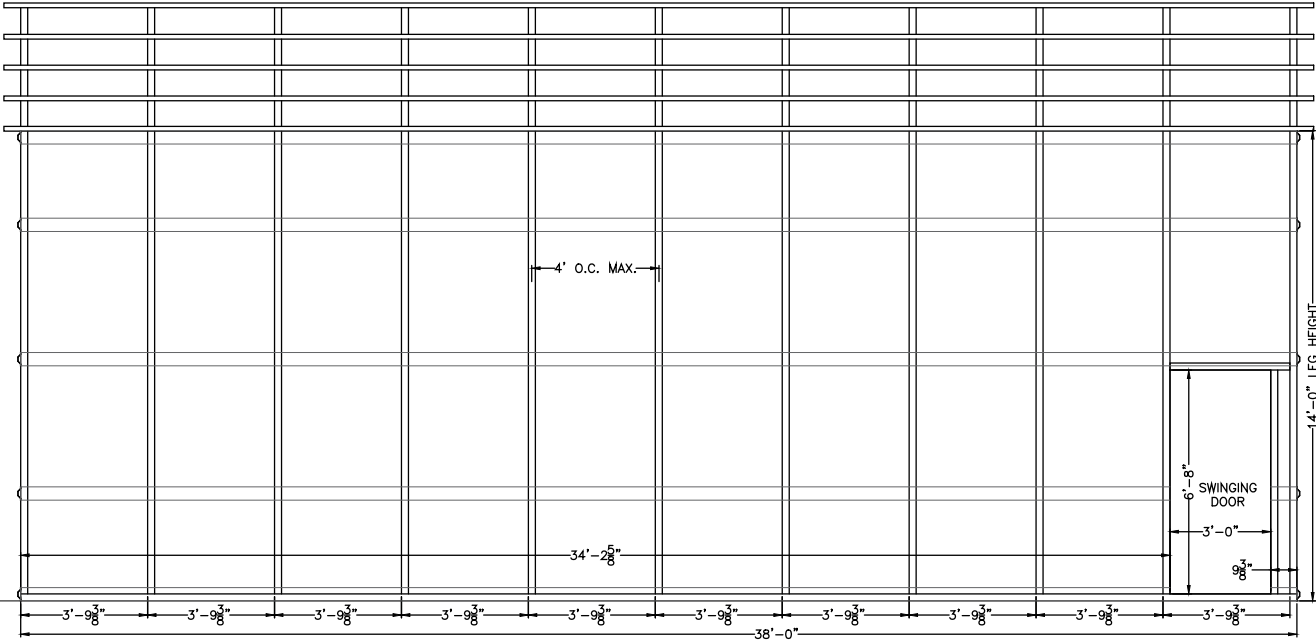
Matthew T. Baldwin P.E.
Florida License #64608

Sheet: CA-3 OF 6

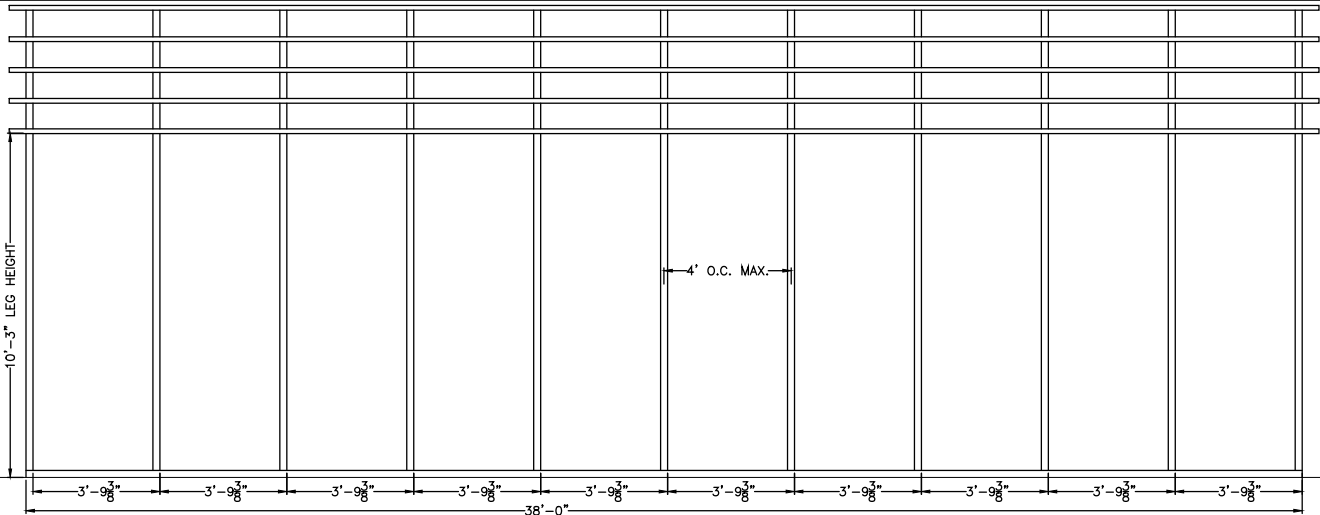
THIS ITEM HAS BEEN DIGITALLY SIGNED AND SEALED BY MATTHEW BALDWIN, PE, ON 3/15/2022.
PRINTED COPIES OF THIS DOCUMENT ARE NOT CONSIDERED SIGNED AND SEALED AND THE SHA
AUTHENTICATION CODE MUST BE VERIFIED ON ANY ELECTRONIC COPIES



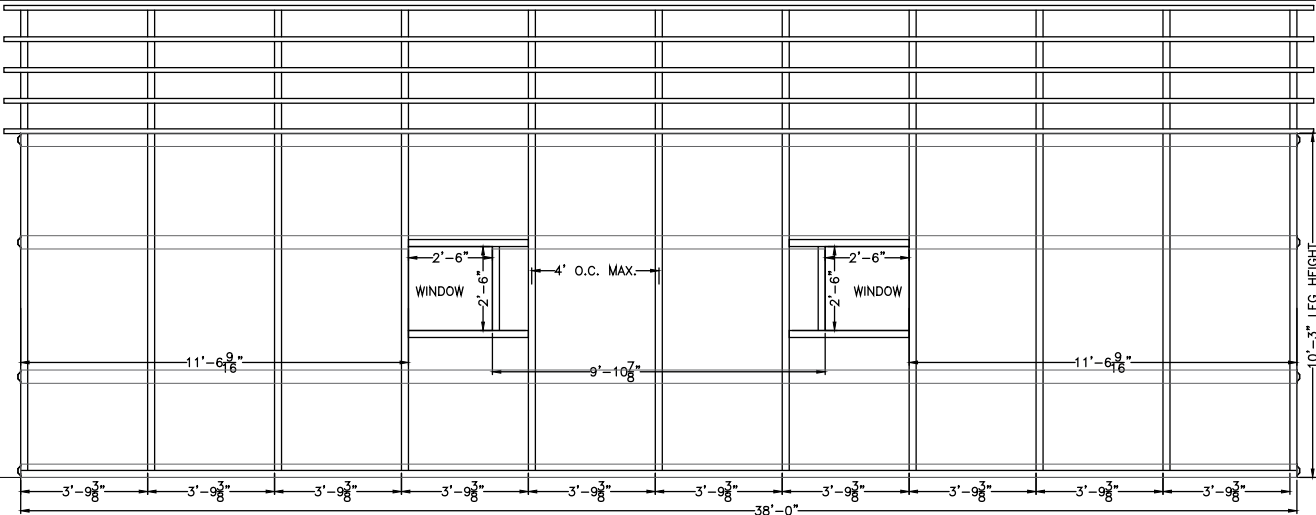
LEFT SIDE WALL



RIGHT SIDE WALL



LEFT SIDE LEAN-TO WALL



RIGHT SIDE LEAN-TO WALL



CODE INFORMATION	
CODE VERSION	FBC 2020 7th Edition, ASCE-7-16
MANUFACTURER	CARPORTS ANYWHERE
BUILDING TYPE	UTILITY STRUCTURE
CONSTRUCTION TYPE	II-B
RISK CATEGORY	II
FIRE PROTECTION	NONE
FIRE SUPPRESSION SYSTEM	NONE
OCCUPANCY	UTILITY, U
WIND SPEED	Vult-140mph
EXPOSURE	B
ENCLOSURE	ENCLOSED/OPEN
INTERNAL PRESSURE COEFF.	+/- 0.18/0.0
IMPORTANCE FACTOR	1.0
ROOF DEAD LOAD	10PSF
ROOF LIVE LOAD	20PSF OR 300lb P.L.
FLOOR DEAD LOAD	10PSF
FLOOR LIVE LOAD	50PSF
"R"RATING OF WALLS,FLOOR,ROOF	N/A BY OTHERS
MODULES PER BUILDING	1
HURRICANE PROTECTION USAGE	NO
HURRICANE SHELTER USAGE	NO
SQUARE FOOTAGE	2,280 SQ. FT.

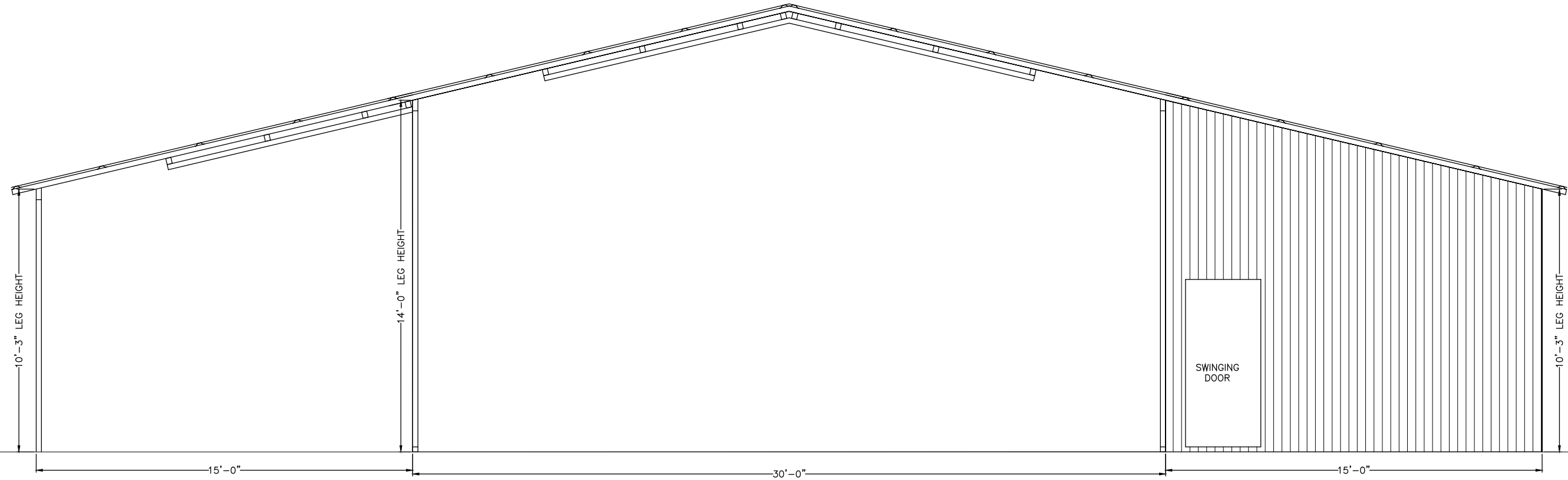
REVISIONS			
REV	DESCRIPTION	DATE	BY
1	MAIN OPEN	3/3/22	MTB
2	LEFT WALL	3/3/22	MTB
3	FOOTERS/SLAB	3/15/22	MTB

DRAWN BY:	MTB
DATE:	2/9/22
LOCATION:	743 SW Central Terr, Fort White
SIZE:	38'L X 60'W X 14'H

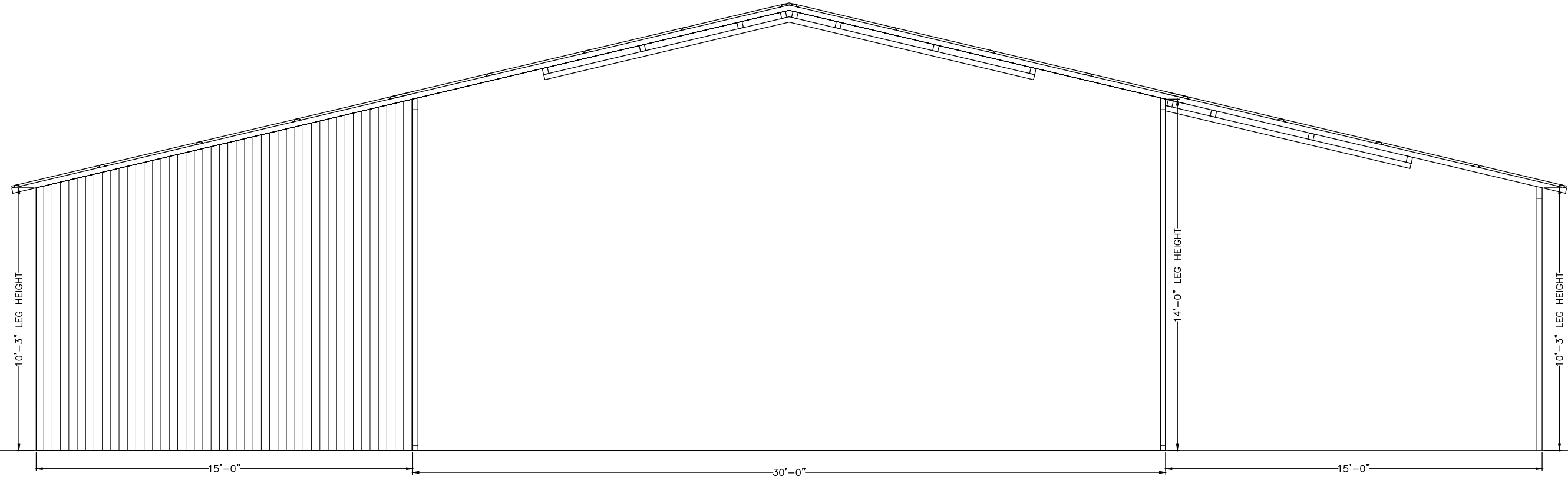
TITLE: END VIEWS

Matthew T. Baldwin P.E.
Florida License #64608

Sheet: CA-4 OF 6



FRONT END WALL



REAR END WALL



CODE INFORMATION

CODE VERSION	FBC 2020 7th Edition, ASCE-7-16
MANUFACTURER	CARPORTS ANYWHERE
BUILDING TYPE	UTILITY STRUCTURE
CONSTRUCTION TYPE	II-B
RISK CATEGORY	II
FIRE PROTECTION	NONE
FIRE SUPPRESSION SYSTEM	NONE
OCCUPANCY	UTILITY, U
WIND SPEED	Vult-140mph
EXPOSURE	B
ENCLOSURE	ENCLOSED/OPEN
INTERNAL PRESSURE COEFF.	+/- 0.18/0.0
IMPORTANCE FACTOR	1.0
ROOF DEAD LOAD	10PSF
ROOF LIVE LOAD	20PSF OR 300lb P.L.
FLOOR DEAD LOAD	10PSF
FLOOR LIVE LOAD	50PSF
"R"RATING OF WALLS,FLOOR,ROOF	N/A BY OTHERS
MODULES PER BUILDING	1
HURRICANE PROTECTION USAGE	NO
HURRICANE SHELTER USAGE	NO
SQUARE FOOTAGE	2,280 SQ. FT.

REVISIONS

REV	DESCRIPTION	DATE	BY
1	MAIN OPEN	3/3/22	MTB
2	LEFT WALL	3/3/22	MTB
3	FOOTERS/SLAB	3/15/22	MTB

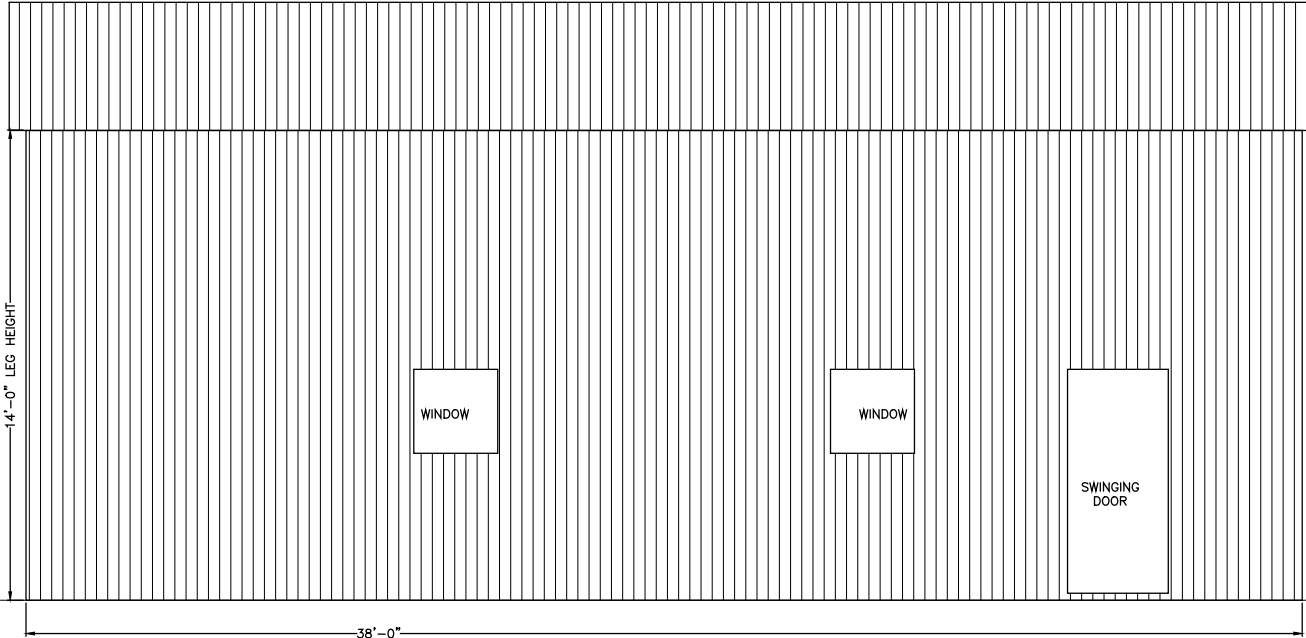
DRAWN BY:	MTB
DATE:	2/9/22
LOCATION:	743 SW Central Terr, Fort White
SIZE:	38'L X 60'W X 14'H

Matthew T. Baldwin P.E.
Florida License #64608

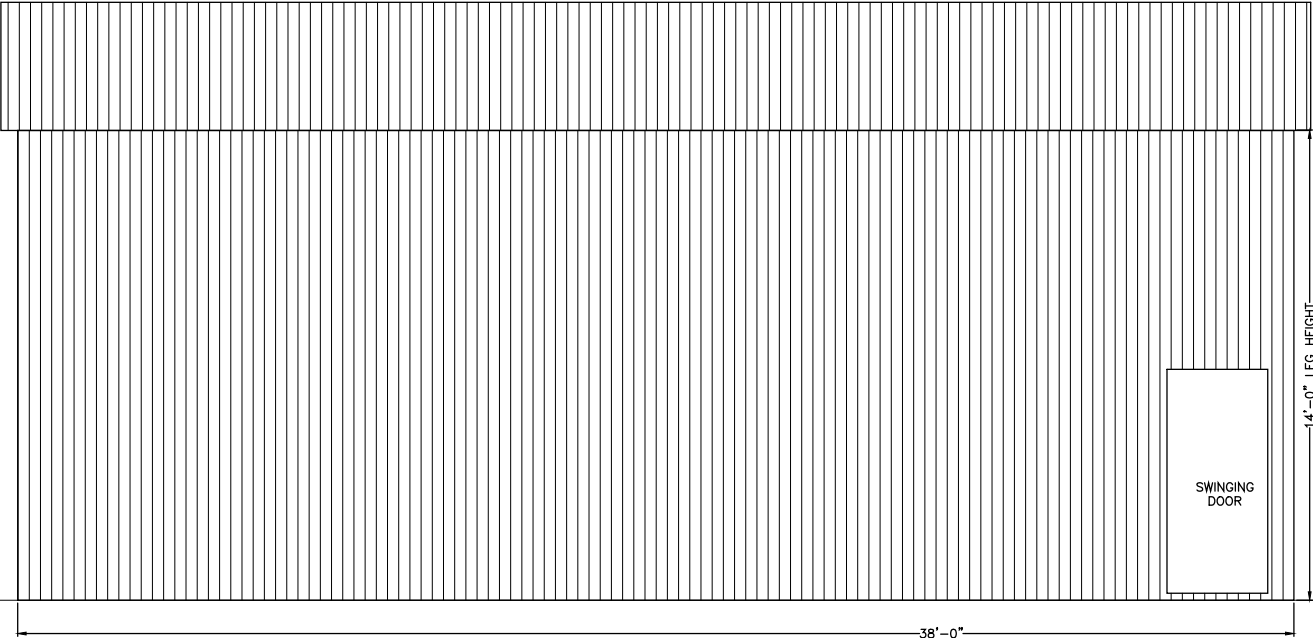
Sheet: CA-5 OF 6

TITLE: SIDE VIEWS

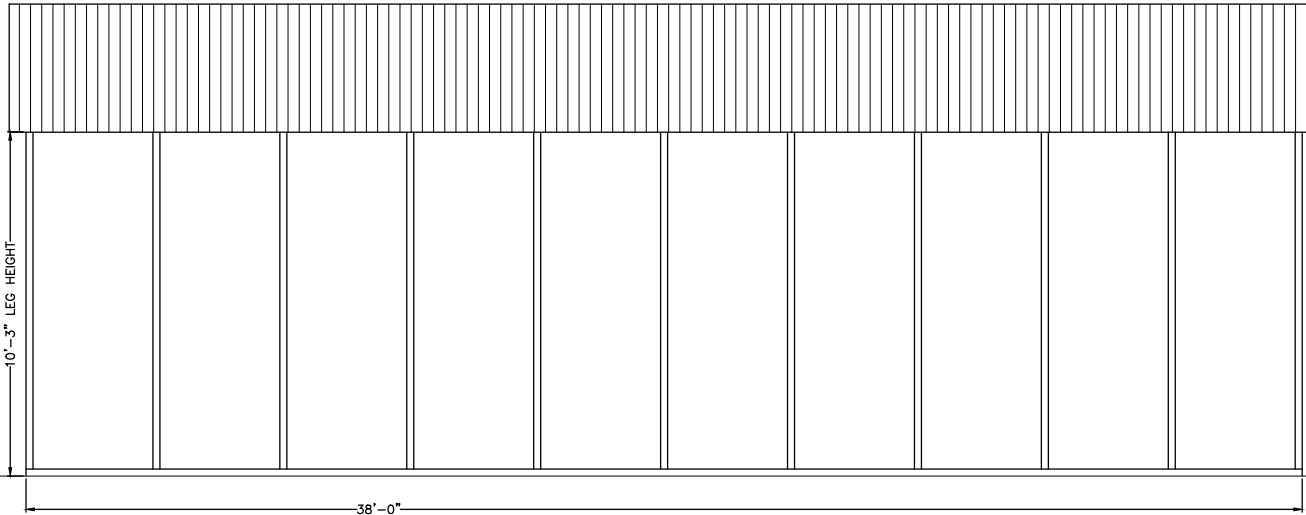
THIS ITEM HAS BEEN DIGITALLY SIGNED AND SEALED BY MATTHEW BALDWIN, PE, ON 3/15/2022. PRINTED COPIES OF THIS DOCUMENT ARE NOT CONSIDERED SIGNED AND SEALED AND THE SHA AUTHENTICATION CODE MUST BE VERIFIED ON ANY ELECTRONIC COPIES



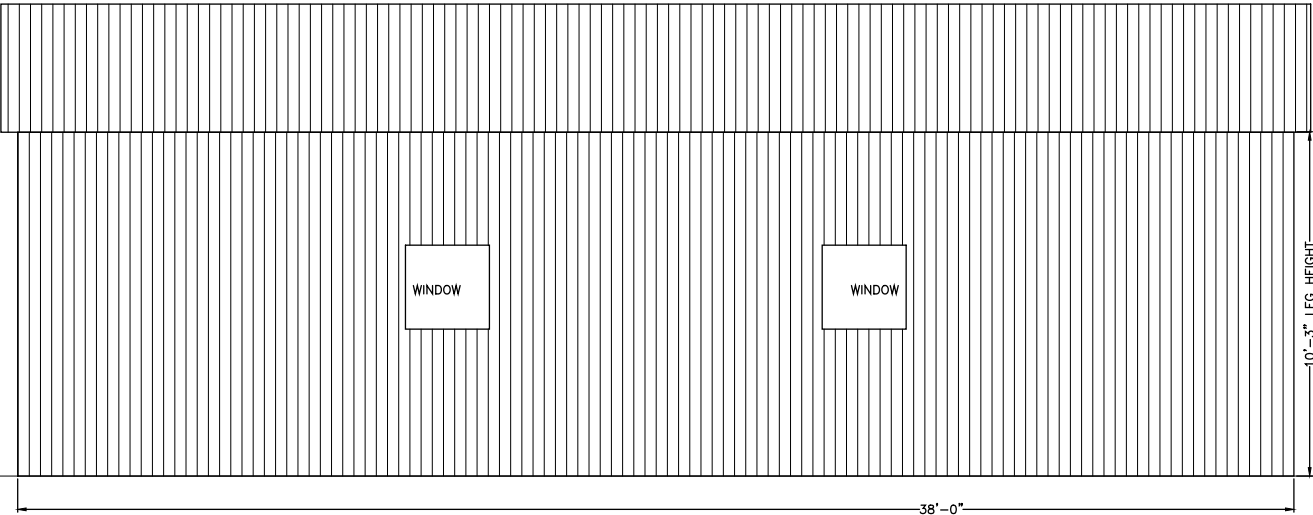
LEFT SIDE WALL



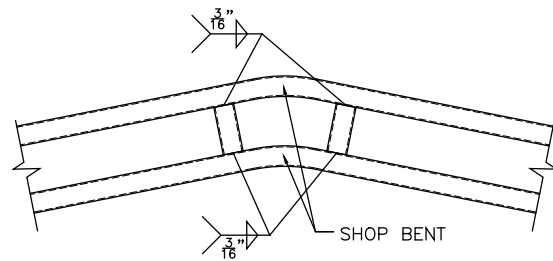
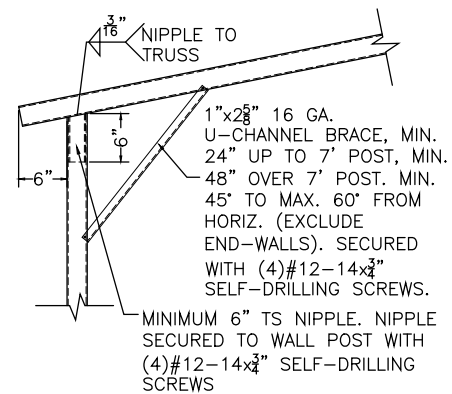
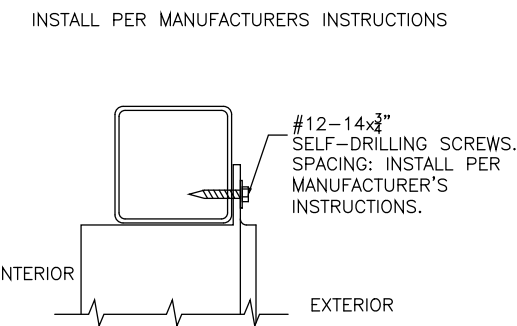
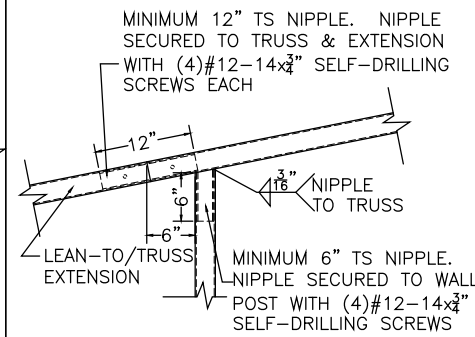
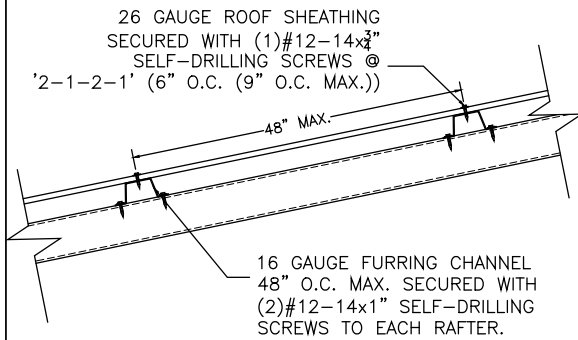
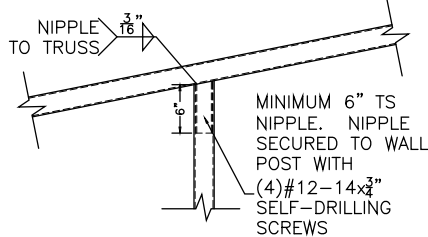
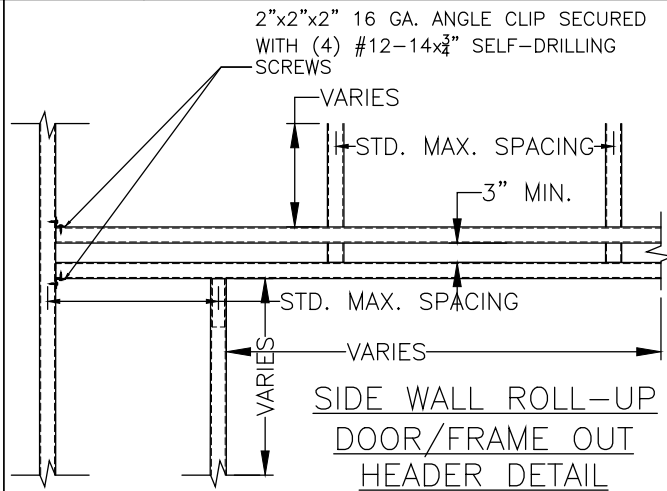
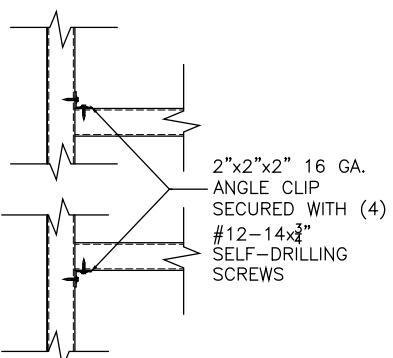
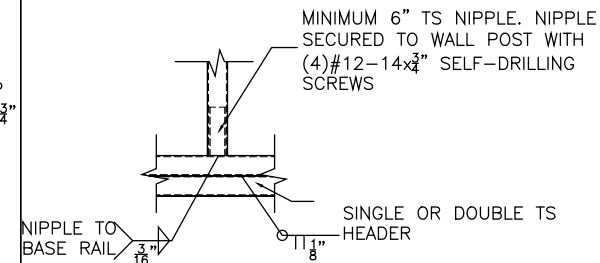
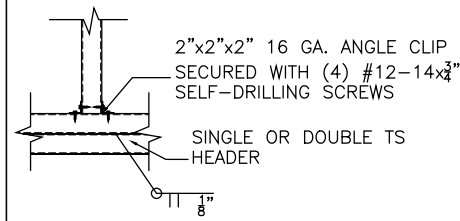
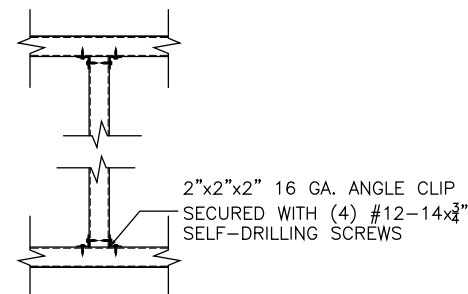
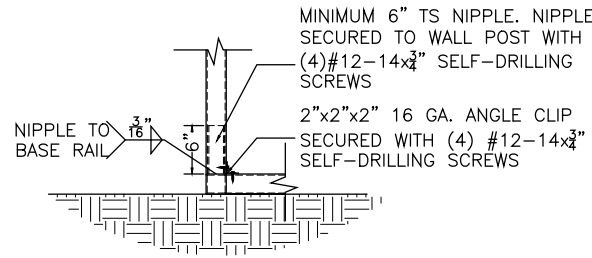
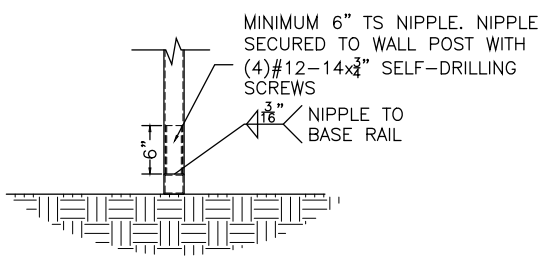
RIGHT SIDE WALL



LEFT SIDE LEAN-TO WALL



RIGHT SIDE LEAN-TO WALL



CODE INFORMATION	
CODE VERSION	FBC 2020 7th Edition, ASCE-7-16
MANUFACTURER	CARPORTS ANYWHERE
BUILDING TYPE	UTILITY STRUCTURE
CONSTRUCTION TYPE	II-B
RISK CATEGORY	II
FIRE PROTECTION	NONE
FIRE SUPPRESSION SYSTEM	NONE
OCCUPANCY	UTILITY, U
WIND SPEED	Vult-140mph
EXPOSURE	B
ENCLOSURE	ENCLOSED/OPEN
INTERNAL PRESSURE COEFF.	+/- 0.18/0.0
IMPORTANCE FACTOR	1.0
ROOF DEAD LOAD	10PSF
ROOF LIVE LOAD	20PSF OR 300lb P.L.
FLOOR DEAD LOAD	10PSF
FLOOR LIVE LOAD	50PSF
"R"RATING OF WALLS,FLOOR,ROOF	N/A BY OTHERS
MODULES PER BUILDING	1
HURRICANE PROTECTION USAGE	NO
HURRICANE SHELTER USAGE	NO
SQUARE FOOTAGE	2,280 SQ. FT.

[illegible]

DRAWN BY:	MTB
DATE:	2/9/22
LOCATION:	743 SW Central Terr, Fort White
SIZE:	38'L X 60'W X 14'H

TITLE: DETAILS

Matthew T. Baldwin P.E.
Florida License #64608

Sheet: CA-6 OF 6

Enclosed		Design Pressures -				140 mph Basic Wind Speed	
Zone							
Roof						Wall	
1	2n	2r	2e	3r	3e	4	5
9.6	12.0	9.6	9.6	12.0	12.0	12.0	14.4
-9.6	-43.3	-23.6	-9.6	-51.5	-43.3	-13.4	-18.2
Open		Design Pressures -				140 mph Basic Wind Speed	
Zone							
Roof						Wall	
1	2n	2r	2e	3r	3e	4	5
9.6	9.6	9.6	9.6	9.6	9.6	9.6	9.6
-9.6	-25.3	-18.9	-9.6	-49.1	-40.2	-9.6	-13.1

APPROVED PRODUCTS		APPROVAL NO.
ROOF SHEATHING	Carports Anywhere Hampton Rib Roof Panel	FL27402.1
WALL SHEATHING	Carports Anywhere Hampton Rib Wall Panel	FL27403.1
SWINGING DOOR	ELIXER DOOR AND METAL COMPANY 407 STEEL DOOR	FL17996.5
WINDOW	POCOHONTAS ALUMINUM COMPANY, INC. MODEL 100VS	FL12940

THIS ITEM HAS BEEN DIGITALLY SIGNED AND SEALED BY MATTHEW BALDWIN, PE, ON 3/15/2022.
PRINTED COPIES OF THIS DOCUMENT ARE NOT CONSIDERED SIGNED AND SEALED AND THE SHA
AUTHENTICATION CODE MUST BE VERIFIED ON ANY ELECTRONIC COPIES