



## Product Approval

USER: Public User

[Product Approval Menu](#) > [Product or Application Search](#) > [Application List](#) > **Application Detail**

FL # FL6166  
Application Type New  
Code Version 2004  
Application Status Approved  
Comments  
Archived ☐

Product Manufacturer Silverline Building Products Corp.  
Address/Phone/Email One Silverline Drive  
North Brunswick, NJ 08902  
(732) 435-1000  
rickw@rwbgdconsultants.com

Authorized Signature Pete Thornton  
rickw@rwbgdconsultants.com

Technical Representative Pete Thornton  
Address/Phone/Email One Silver Line Dr.  
N. Brunswick, NJ 08902

[petethornton@silverlinewindow.com](mailto:petethornton@silverlinewindow.com)

Quality Assurance Representative  
Address/Phone/Email

Category Windows  
Subcategory Single Hung

Compliance Method Evaluation Report from a Florida Registered Architect or a  
Licensed Florida Professional Engineer  
☒ Evaluation Report - Hardcopy Received

Florida Engineer or Architect Name who developed the Evaluation Report Wendell W. Haney

Florida License PE-54158

Quality Assurance Entity National Accreditation and Management Institute

Validated By L.F. Schmidt, P.E.

Certificate of Independence [FL6166\\_R0\\_COI\\_Certificate of Independence.pdf](#)

Referenced Standard and Year (of Standard)

**Standard**

**Year**

101/I.S. 2

1997

Accepted Engineering Practice

2004

ASTM E1300

2002

Equivalence of Product Standards  
Certified By

Sections from the Code

Product Approval Method

Method 1 Option D

Date Submitted

02/22/2006

Date Validated

02/28/2006

Date Pending FBC Approval

03/07/2006

Date Approved

03/22/2006

**Summary of Products**

FL #	Model, Number or Name	Description
6166.1	a. 2900 Series / Model 2910	Extruded Vinyl Single Hung Window - Flange
<b>Limits of Use</b> <b>Approved for use in HVHZ:</b> No <b>Approved for use outside HVHZ:</b> Yes <b>Impact Resistant:</b> No <b>Design Pressure:</b> +50.0 /-50.0 <b>Other:</b> See INST 6166.1 and EVAL 6166.1 for any additional use limitations and installation instructions.		<b>Installation Instructions</b> <a href="#">FL6166_R0_II_INST 6166.1.pdf</a> Verified By: Wendell W. Haney, P.E. 54158 <b>Evaluation Reports</b> <a href="#">FL6166_R0_AE_EVAL 6166.1.pdf</a>
6166.2	b. 2900 Series / Model 2960	Extruded Vinyl Single Hung Window - Fin
<b>Limits of Use</b> <b>Approved for use in HVHZ:</b> No <b>Approved for use outside HVHZ:</b> Yes <b>Impact Resistant:</b> No <b>Design Pressure:</b> +50.0 /-50.0 <b>Other:</b> See INST 6166.2 and EVAL 6166.2 for any additional use limitations and installation instructions.		<b>Installation Instructions</b> <a href="#">FL6166_R0_II_INST 6166.2.pdf</a> Verified By: Wendell W. Haney, P.E. 54158 <b>Evaluation Reports</b> <a href="#">FL6166_R0_AE_EVAL 6166.2.pdf</a>

MODEL DESIGNATION:

Silverline 2900 Double Single Hung Window W/ Nailing Fin

MAXIMUM OVERALL NOMINAL SIZE: Double up to 76" x 63"

DESIGN PRESSURE RATING:

Anchors: Positive 50.0 PSF Negative 50.0 PSF  
Windows: Design Pressure Ratings Vary; See  
Corresponding AAMA Test Report or Dade  
NOA or Florida P.E. Evaluation.

EXTERIOR SHE/  
SID.

15lbs. FE  
SEE NOTE

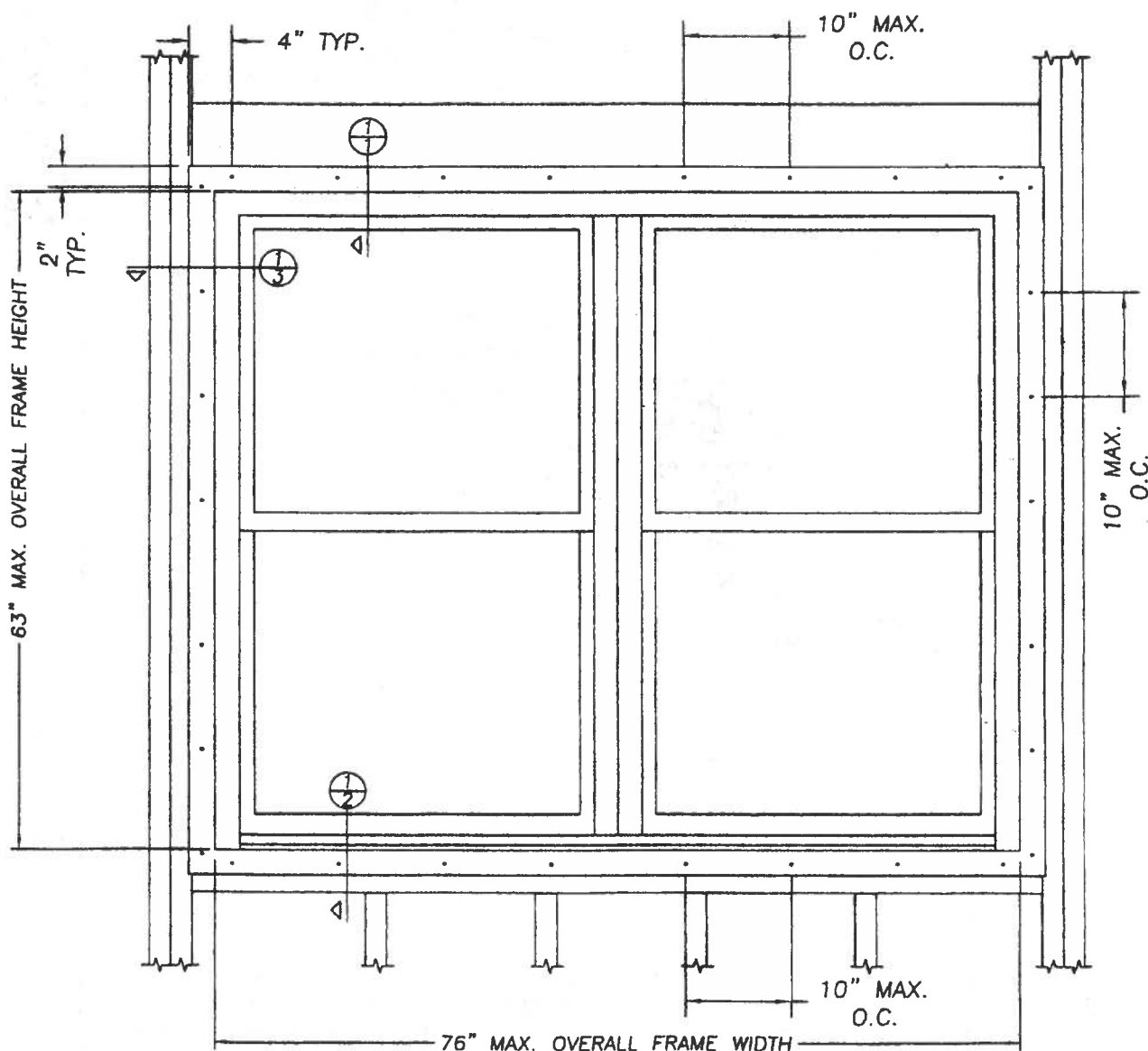
USABLE CONFIGURATIONS:

00  
XX

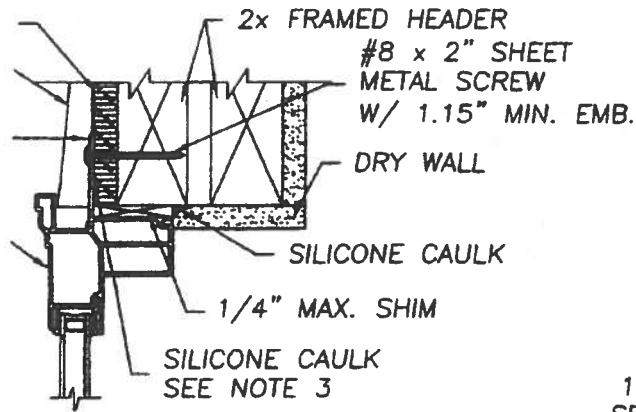
GENERAL DESCRIPTION:

Head and side jambs are extruded PVC.  
Wall thickness through which anchor screw penetrates  
is a minimum of .070"

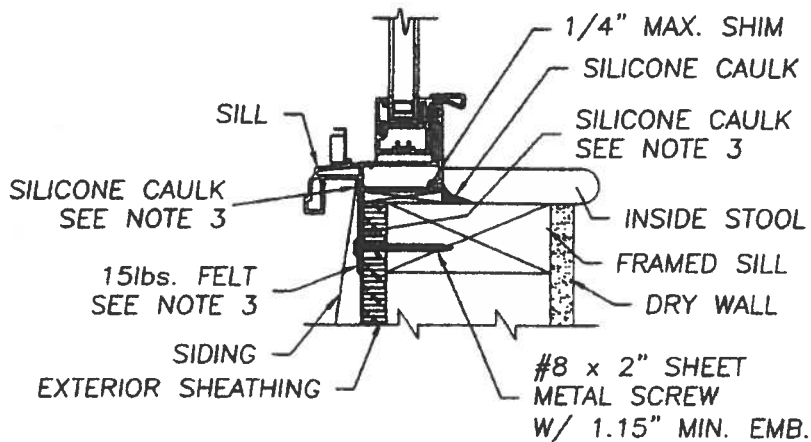
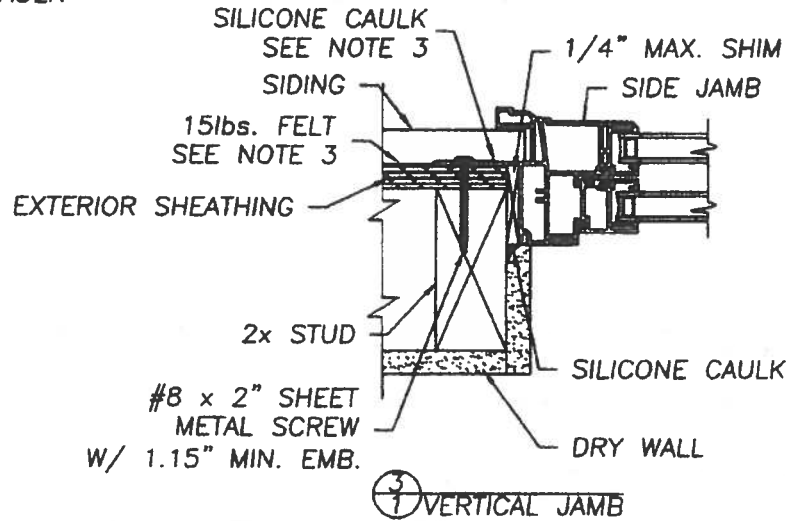
HEAD J



25098



① HEAD JAMB



② SILL

July 14, 2003

Lyndon F. Schmidt  
Florida P. E. No. 43409  
19506 French Lace Drive  
Lutz, FL 33558

**SilverLINE**  
BUILDING PRODUCTS CORP.

1 SILVERLINE DRIVE  
NORTH BRUNSWICK, NJ 08902  
PH. 732.435.1000

ANCHORING CROSS SECTIONS  
FOR STUD CONSTRUCTION  
TRIPLE SINGLE HUNG  
VINYL WINDOW

**RW** BUILDING  
CONSULTANTS, INC.  
813.659.9197

DATE: 7/3/03

SCALE: N.T.S.

DWG. BY: ROF

CHK. BY: TJH

DRAWING NO.:

SL-406-WF

SHEET 1 OF 1

**NOTES:**

This installation has been evaluated for use in locations adhering to the Florida Building Code and where pressure requirements as determined by ASCE 7, Minimum Design Loads for Buildings and Other Structures, do not exceed design pressure ratings listed herein.

This is a continuous header and sill mulled system.

15lbs. felt must be used as a water barrier. The felt must cover the nailing fin and anchor screw heads. All loose edges of the felt paper must be sealed with silicone caulk.