

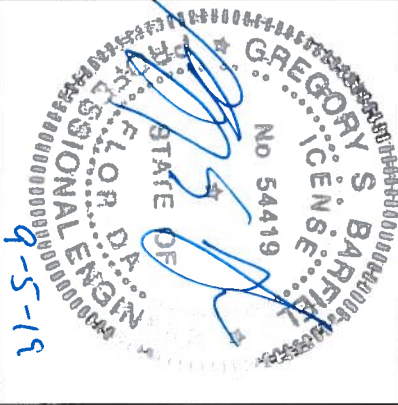
TABLE 2	
BOW SPAN (SEE DETAIL 1/S2)	MAXIMUM O.C. BOW SPACING
UP TO 24'-0"	5'-0"
26'-0" TO 30'-0"	3'-6"

TABLE 1			
MAXIMUM POST HEIGHT	POST/BOW GAGE		12 GA
	130 MPH MAX. WIND SPEED	170 MPH MAX. WIND SPEED	
10'-0"	14 GA		12 GA
12'-0"	12 GA		12 GA

DRAWING INDEX	
S1	ELEVATION VIEW & NOTES
S2	BOW FRAME DETAILS
S3	ANCHORAGE DETAILS
S4	END WALL ELEVATIONS
S5	DETAILS
S6	DETAILS
S7	DETAILS
S8	DETAILS
S9	ROOF AND WALL BRACING DETAILS



- NOTES:**
- DESIGN IS BASED ON THE FLORIDA BUILDING CODE (2017) AND THE ASCE 7-10 STANDARD
 - LOADS:
WIND: Vult = 170 MPH (MAX.), (3-SEC. GUST)
RISK CATEGORY: I
WIND EXPOSURE: C
ROOF/SNOW LOAD = 5 PSF MAX.
SEISMIC DESIGN CATEGORY: D
 - STEEL TUBES SHALL BE AS FOLLOWS:
12 GA: fy = 64.5 KSI - 2-1/4" SQUARE
14 GA: fy = 50 KSI - 2-1/2" SQUARE
 - LOCATE ANCHORS AT EACH END OF BOW.
 - FASTEN METAL ROOF PANELS TO BOW FRAME WITH 1/4"x1" SELF DRILLING FASTENERS (SDF) @ 8" O.C. MAX.
 - ALL FIELD CONNECTIONS SHALL BE 1/4"x1" SELF DRILLING SCREWS.
 - ALL SHOP CONNECTIONS SHALL BE WELDED.
 - CONTRACTOR/OWNER TO VERIFY FOOTING REQUIREMENTS WITH LOCAL BUILDING DEPARTMENT PRIOR TO CONSTRUCTION. FOOTING DESIGN IS THE RESPONSIBILITY OF OTHERS.



ENGINEER

GREGORY S. BARFIELD, P.E.
2149 NELL PURVIS RD.
ADEL, GA 31620
LICENSE # 54419

DESIGNED EXCLUSIVELY FOR
**ALL METAL
BUILDINGS**

REVISIONS	
DATE	DESCRIPTION

ELEVATION VIEW & NOTES

STANDARD CARPORT
WITH OPTIONS

KARL KOLACIA
4300 SW CR 18
FT WHITE, FL 32038

BOW FRAMING TABLES

NTS. 2

DESIGNED EXCLUSIVELY FOR
**ALL METAL
BUILDINGS**

REVISIONS	
DATE	DESCRIPTION

ENGINEER

GREGORY S. BARFIELD, P.E.
2149 NELL PURVIS RD.
ADEL, GA 31620
LICENSE # 54419



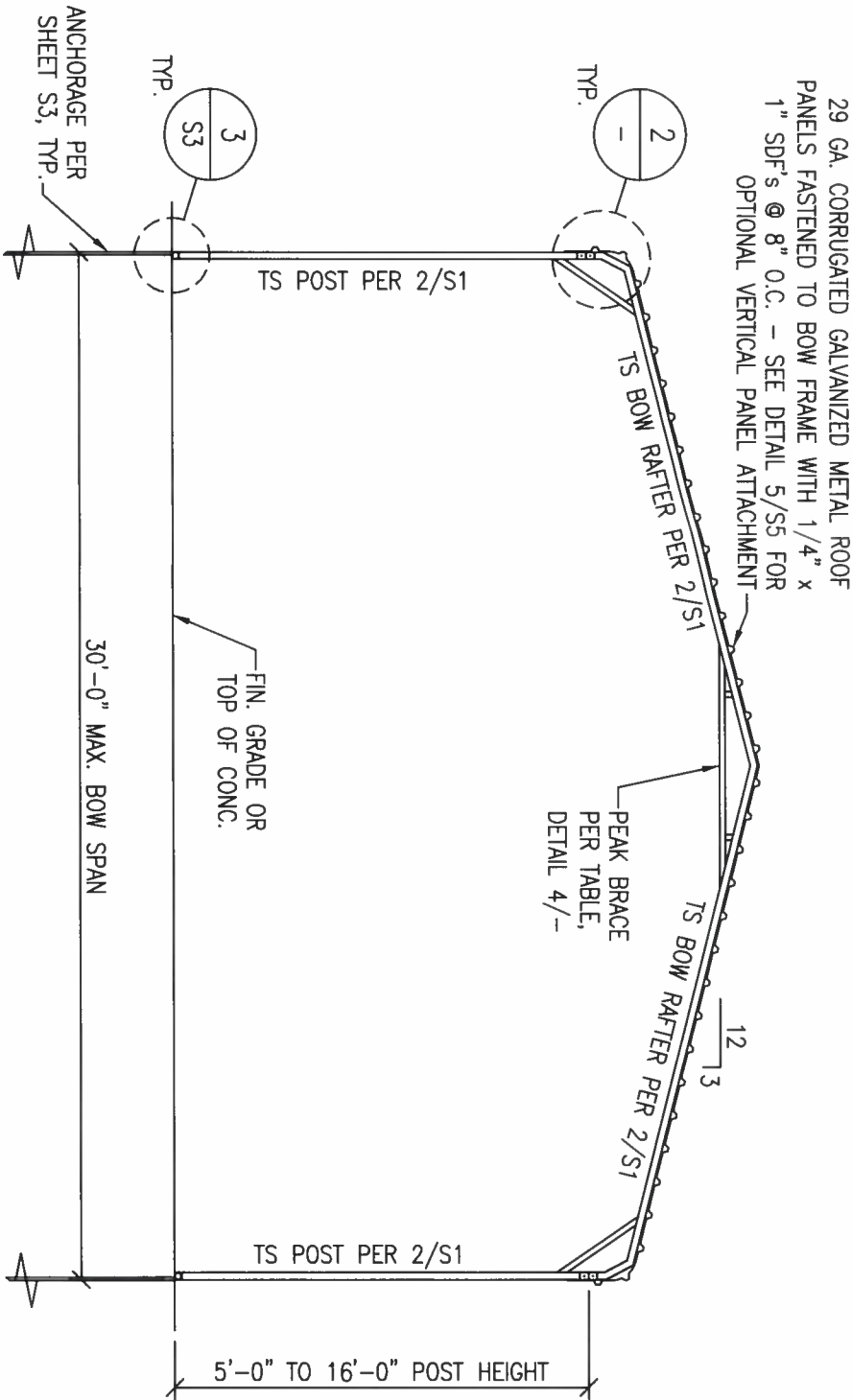
ELEVATION VIEW & NOTES

STANDARD CARPORT
WITH OPTIONS

KARL KOLACIA
4300 SW CR 18
FT WHITE, FL 32038

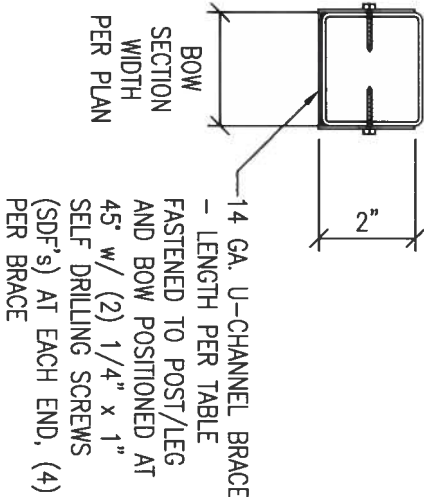
S2

REV
0



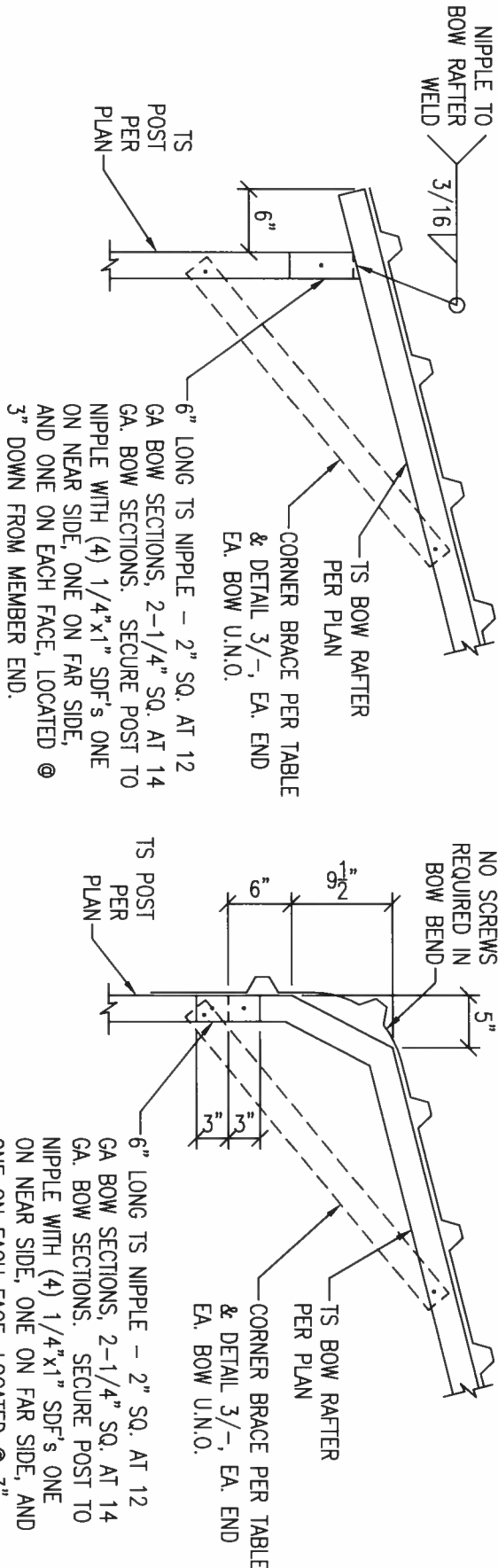
TYPICAL BOW SECTION

BRACE CONNECTION DETAIL



3

NTS.



CORNER BRACE TABLE	
POST HEIGHT	BRACE LENGTH
5'-0" TO 8'-6"	2'-0"
9'-0" TO 12'-0"	3'-0"

PEAK BRACE TABLE	
UP TO 130 MPH MAX. WIND SPEED	
BOW SPAN	BRACE
UP TO 24'	2'-0" LONG PER DTL 3/-
OVER 24' TO 30'	16'-0" LONG 12 GA. TS*
131 MPH TO 170 MPH MAX. WIND SPEED	
BOW SPAN	BRACE
UP TO 20'	4'-0" LONG PER DTL 3/-
OVER 20' TO 24'	6'-0" LONG PER DTL 3/-
OVER 24' TO 30'	16'-0" LONG 12 GA. TS*

* - PEAK BRACE TO HAVE (2) TS VERTS, EQUALLY SPACED ON HORIZONTAL - BRACE TO BE FULLY WELDED

PEAK BRACE DETAIL

4

NTS.

BOW/POST DETAIL

2

NTS.

DESIGNED EXCLUSIVELY FOR
**ALL METAL
BUILDINGS**

REVISIONS	
DATE	DESCRIPTION

ENGINEER

GREGORY S. BARFIELD, P.E.
2149 NELL PURVIS RD.
ADEL, GA 31620
LICENSE # 54419

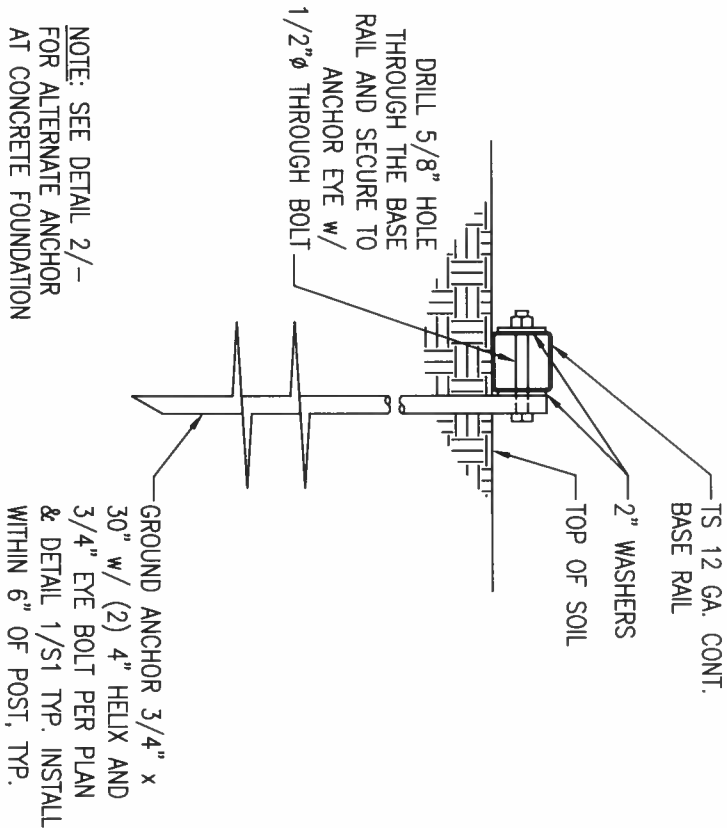


ELEVATION VIEW & NOTES
STANDARD CARPORT
WITH OPTIONS

KARL KOLACIA
4300 SW CR 18
FT WHITE, FL 32038

S3

REV
0

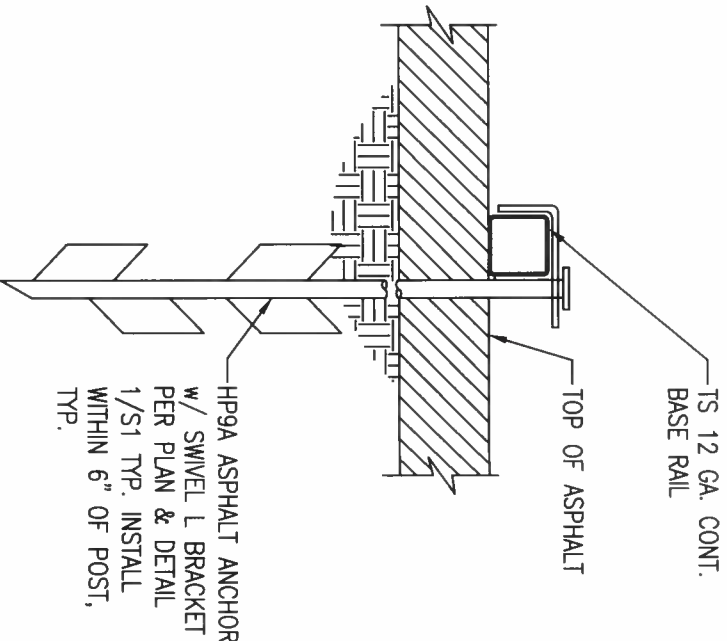


OPTION A

GROUND BASE RAIL ANCHORAGE

NTS

1

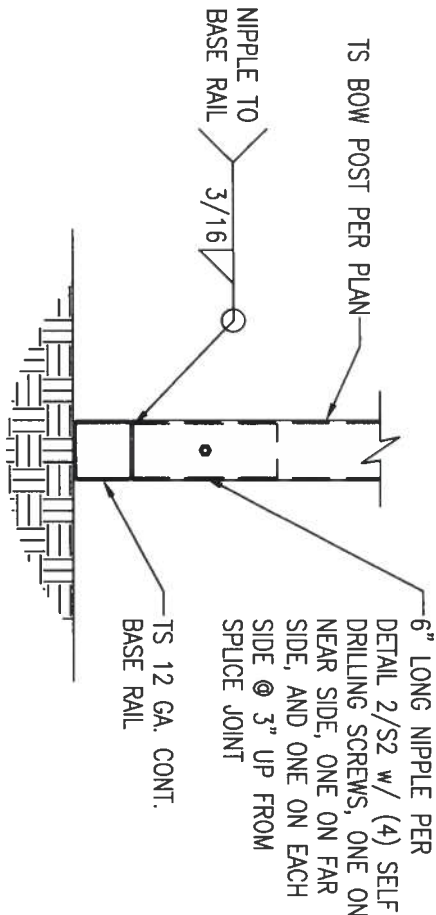


OPTION B

BOW TO BASE RAIL CONNECTION DETAIL

NTS

3



CONCRETE:
CONCRETE SHALL HAVE A MIN. SPECIFIED COMPRESSIVE STRENGTH OF 2500 PSI AT 28 DAYS.

COVER OVER REINFORCING STEEL
FOR FOUNDATIONS, MIN. CONCRETE COVER OVER REINFORCING BARS SHALL BE:
3" IN FOUNDATION WHERE THE CONCRETE IS CAST AGAINST AND PERMANENTLY IN CONTACT WITH THE EARTH OR EXPOSED TO THE EARTH OR WEATHER AND 1-1/2" ELSEWHERE.

REINFORCING STEEL
THE REINFORCING STEEL SHALL BE MIN. GRADE 60

GALVANIZATION
METAL ACCESSORIES FOR USE IN EXTERIOR WALL CONSTRUCTION AND NOT DIRECTLY EXPOSED TO THE WEATHER SHALL BE GALVANIZED IN ACCORDANCE WITH ASTM A 153, CLASS B-2, METAL PLATE CONNECTORS, SCREWS AND NAILS EXPOSED DIRECTLY TO THE WEATHER SHALL BE STAINLESS STEEL OR HOT DIPPED GALVANIZED.

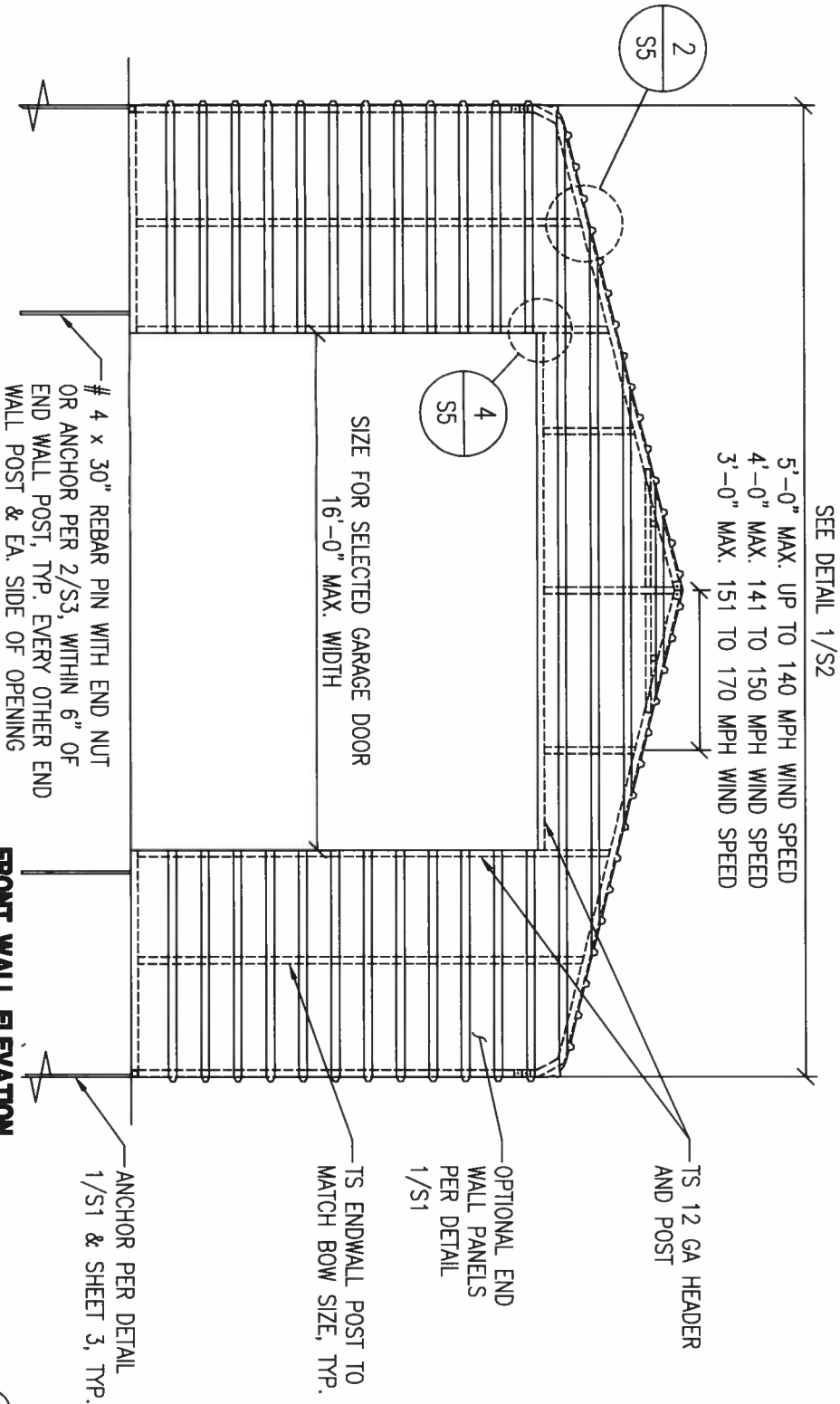
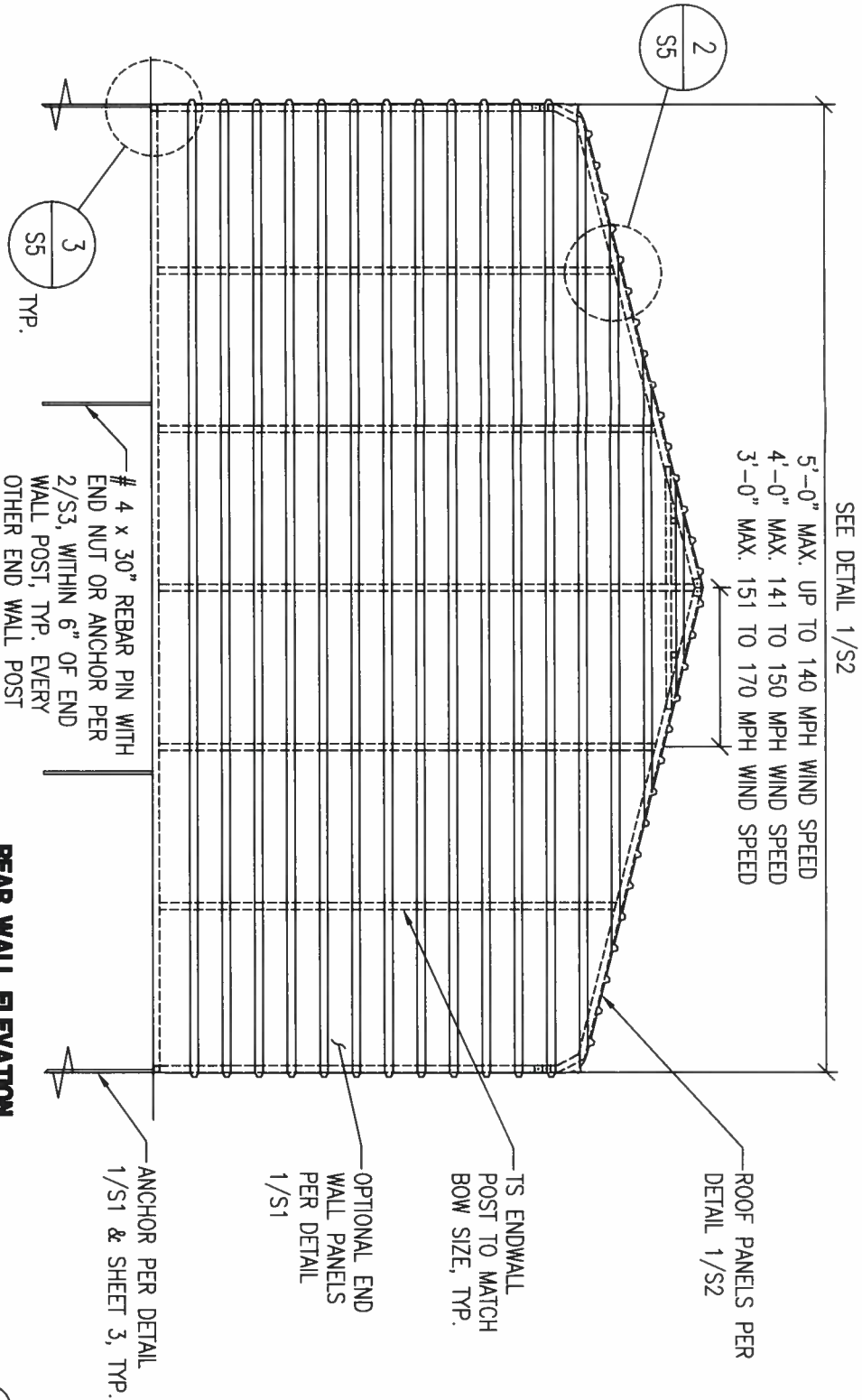
REINFORCEMENT MAY BE BENT IN THE SHOP OR THE FIELD PROVIDED:
1. ALL REINFORCEMENT IS BENT COLD
2. THE DIAMETER OF THE BEND, MEASURED ON THE INSIDE OF THE BAR, IS NOT LESS THAN SIX BAR DIAMETERS
3. REINFORCEMENT PARTIALLY EMBEDDED IN CONCRETE SHALL NOT BE FIELD BENT. EXCEPTION: WHERE BENDING IS NECESSARY TO ALIGN DOWEL BARS WITH A VERTICAL CELL, BARS PARTIALLY EMBEDDED IN CONCRETE SHALL BE PERMITTED TO BE BENT AT A SLOPE OF NOT MORE THAN 1" OF HORIZONTAL DISPLACEMENT TO 6" OF VERTICAL BAR LENGTH.

NOTE:

EXTERIOR WINDOWS AND GLASS DOORS SHALL BEAR AN APPROVED LABEL IDENTIFYING THE MANUFACTURER, PERFORMANCE CHARACTERISTICS AND APPROVED PRODUCT EVALUATION ENTITY TO INDICATE COMPLIANCE WITH THE FOLLOWING TABLE:

FLORIDA PRODUCT APPROVAL CODES			
MANUFACTURER	PRODUCT	MODEL/SERIES	APPROVAL #
USA STEEL BUILDINGS, INC.	ROOF DECKING	36-R PANEL	FL-13364
IANUS INTERNATIONAL CORP.	ROLL-UP DOOR	750 SERIES	FL-12765
POCAHONTAS ALUMINUM CO., INC.	WALK-IN DOOR	D-100	FL-12903
POCAHONTAS ALUMINUM CO., INC.	WINDOWS	100-VS	FL-12940

DOOR TABLE	
CARPORT WIDTH	MAX. DOOR WIDTH
12'-0"	8'-0"
14'-0" TO 16'-0"	10'-0"
18'-0" TO 20'-0"	12'-0"
22'-0"	16'-0" OR (2) 8'-0"
24'-0"	16'-0" OR (2) 9'-0"
26'-0" TO 28'-0"	16'-0" OR (2) 10'-0"
30'-0"	16'-0" OR (2) 12'-0"



DESIGNED EXCLUSIVELY FOR
**ALL METAL
BUILDINGS**

REVISIONS

DATE	DESCRIPTION
------	-------------

ENGINEER

GREGORY S. BARFIELD, P.E.
2149 NELL PURVIS RD.
ADEL, GA 31620
LICENSE # 54419



ELEVATION VIEW & NOTES

**STANDARD CARPORT
WITH OPTIONS**

KARL KOLACIA
4300 SW CR 18
FT WHITE, FL 32038

S4

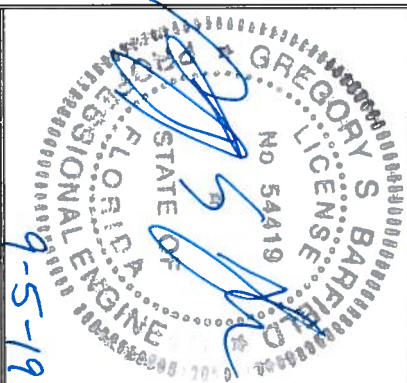
REV
0

DESIGNED EXCLUSIVELY FOR
**ALL METAL
BUILDINGS**

REVISIONS	
DATE	DESCRIPTION

ENGINEER

GREGORY S. BARFIELD, P.E.
2149 NELL PURVIS RD.
ADEL, GA 31620
LICENSE # 54419



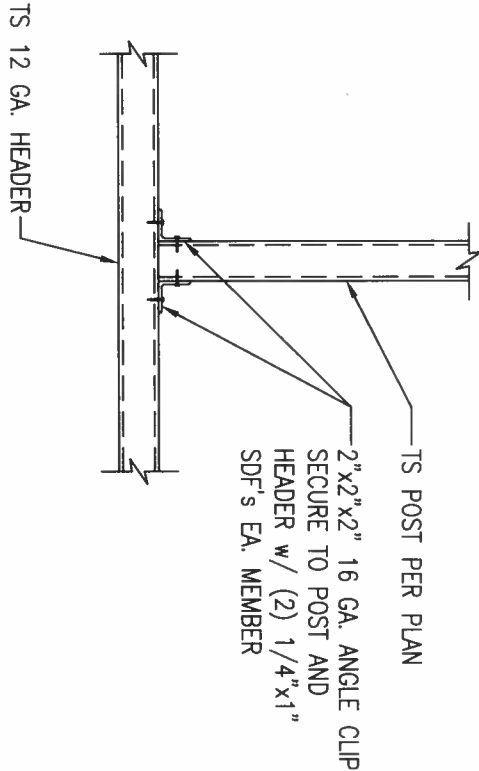
ELEVATION VIEW & NOTES

**STANDARD CARPORT
WITH OPTIONS**

KARL KOLACIA
4300 SW CR 18
FT WHITE, FL 32038

S5

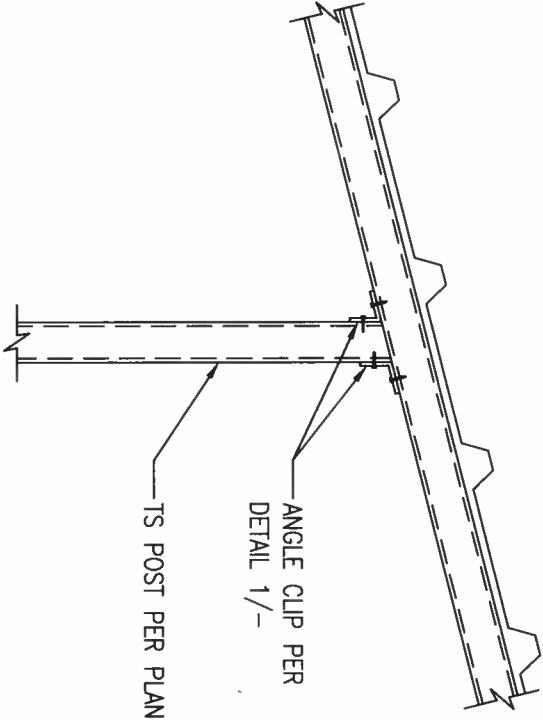
REV
0



END POST TO HEADER/RAIL CONN DETAIL

NTS.

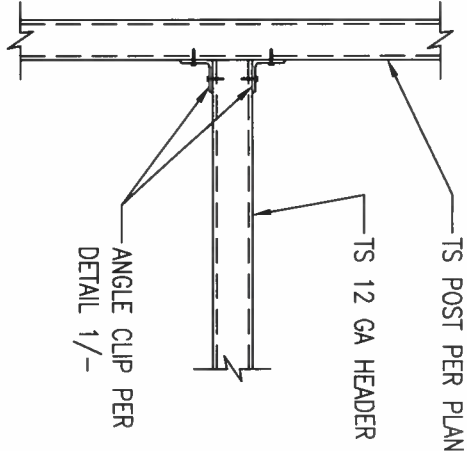
1



END POST/BOW CONN DETAIL

NTS.

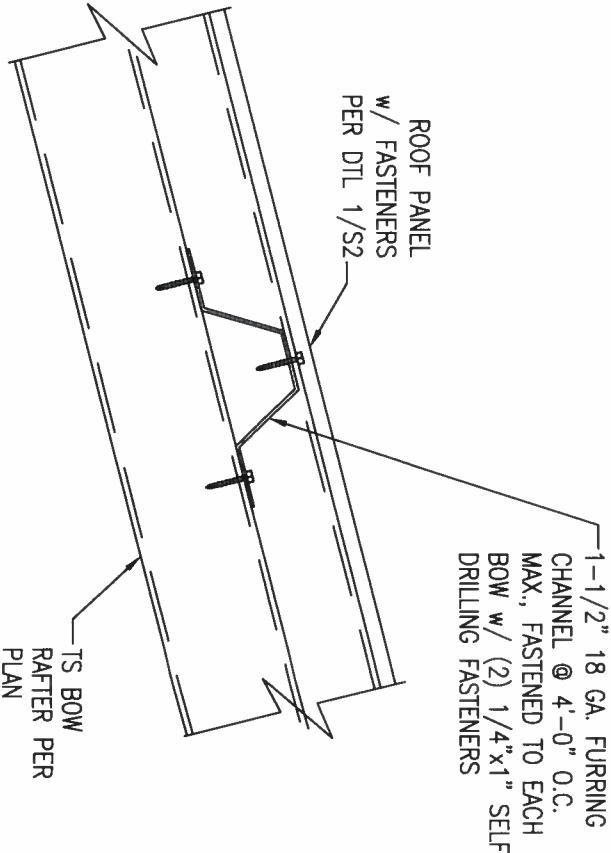
2



HEADER TO POST CONN DETAIL

NTS.

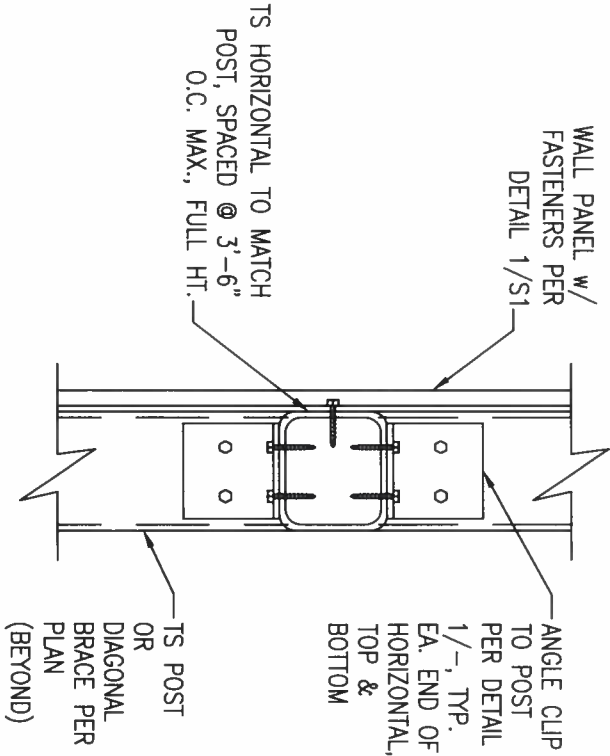
4



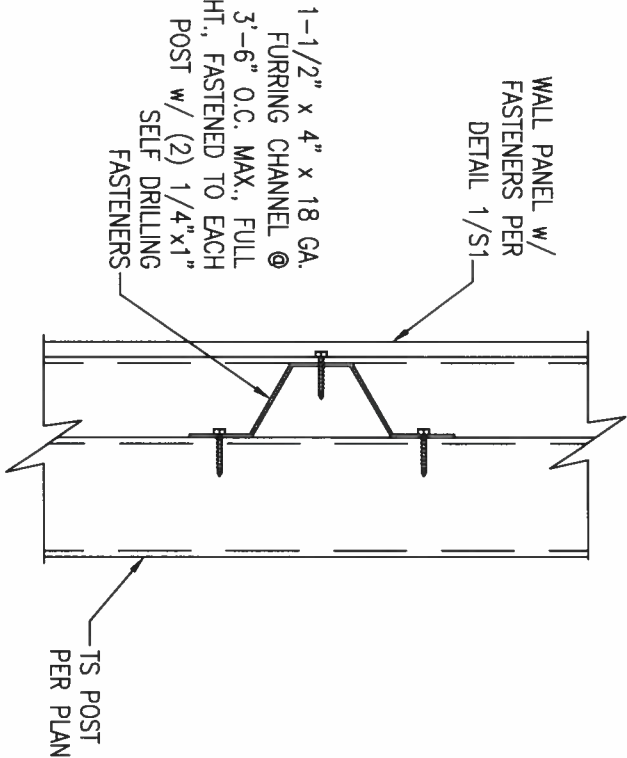
VERTICAL ROOF PANEL ATTACHMENT

NTS.

5



FLUSH TS HORIZONTAL OPTION



FURRING CHANNEL OPTION

VERTICAL WALL PANEL ATTACHMENT

NTS.

6

DESIGNED EXCLUSIVELY FOR
ALL METAL
BUILDINGS

REVISIONS	
DATE	DESCRIPTION

ENGINEER

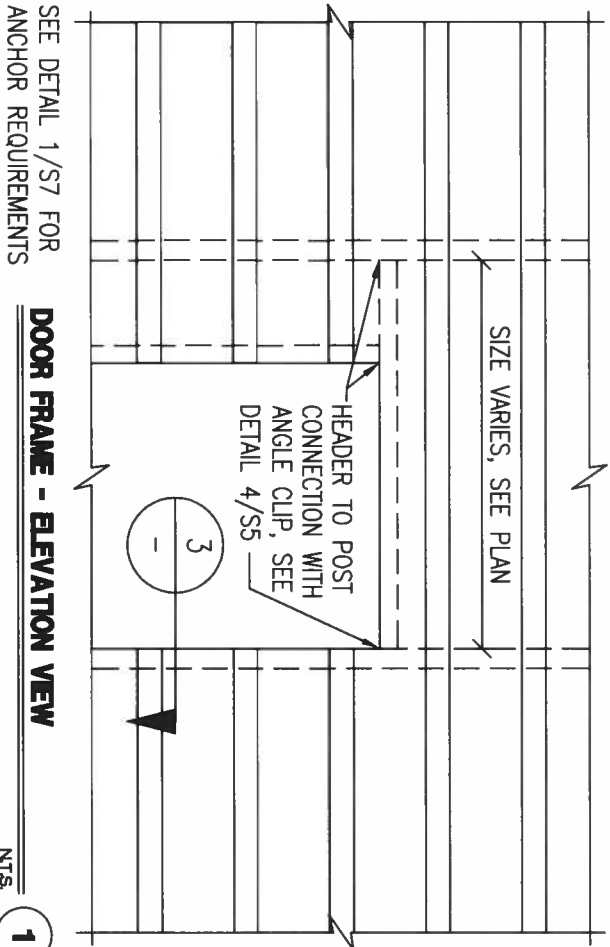
GREGORY S. BARFIELD, P.E.
2149 NELL PURVIS RD.
ADEL, GA 31620
LICENSE # 54419



ELEVATION VIEW & NOTES

STANDARD CARPORT
WITH OPTIONS

KARL KOLACIA
4300 SW CR 18
FT WHITE, FL 32038

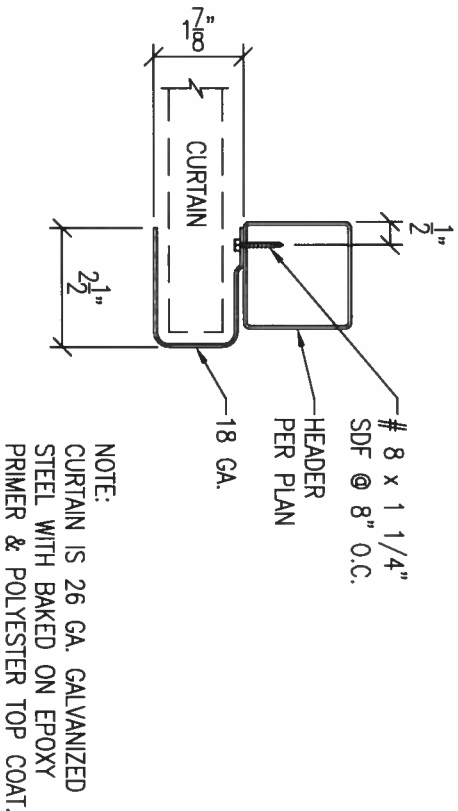


SEE DETAIL 1/S7 FOR
ANCHOR REQUIREMENTS

DOOR FRAME - ELEVATION VIEW

NTS.

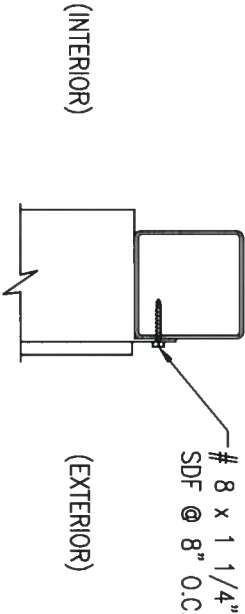
1



SECTION THROUGH ROLL UP DOOR HEADER

NTS.

2



SECTION

NTS.

3

S6

REV
0

DESIGNED EXCLUSIVELY FOR
**ALL METAL
BUILDINGS**

REVISIONS	
DATE	DESCRIPTION

ENGINEER

GREGORY S. BARFIELD, P.E.
2149 NELL PURVIS RD.
ADEL, GA 31620
LICENSE # 54419

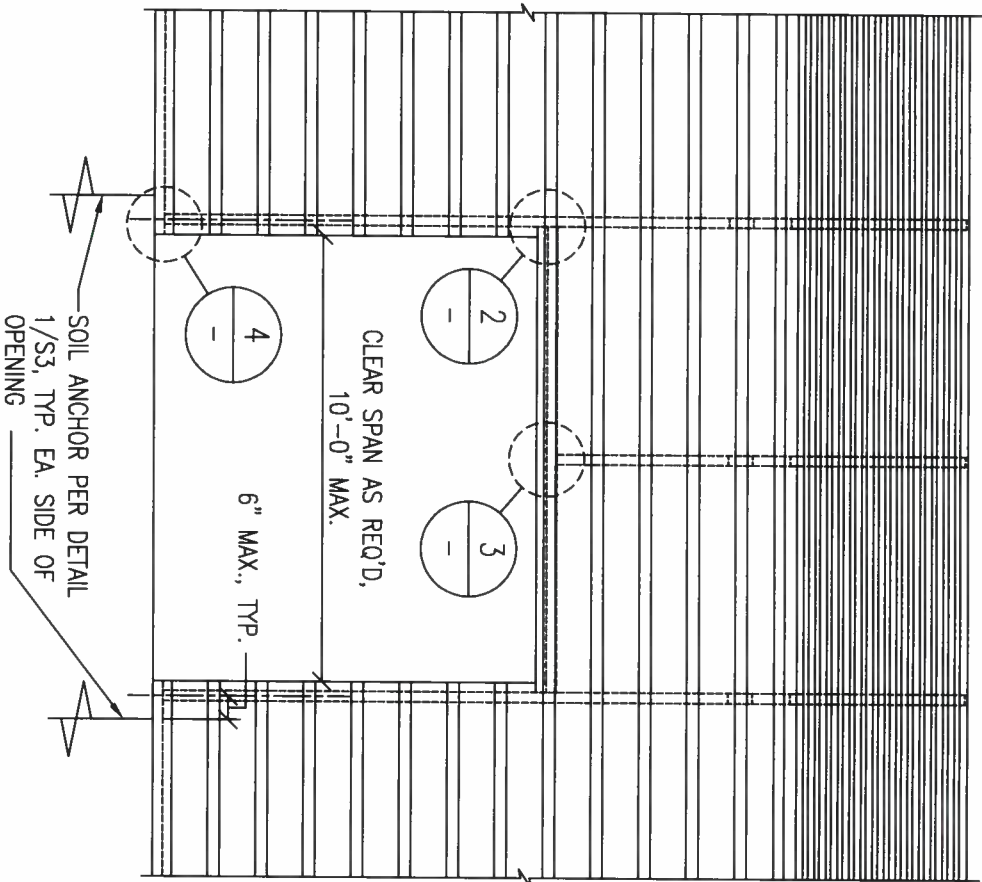


ELEVATION VIEW & NOTES

**STANDARD CARPORT
WITH OPTIONS**

KARL KOLACIA
4300 SW CR 18
FT WHITE, FL 32038

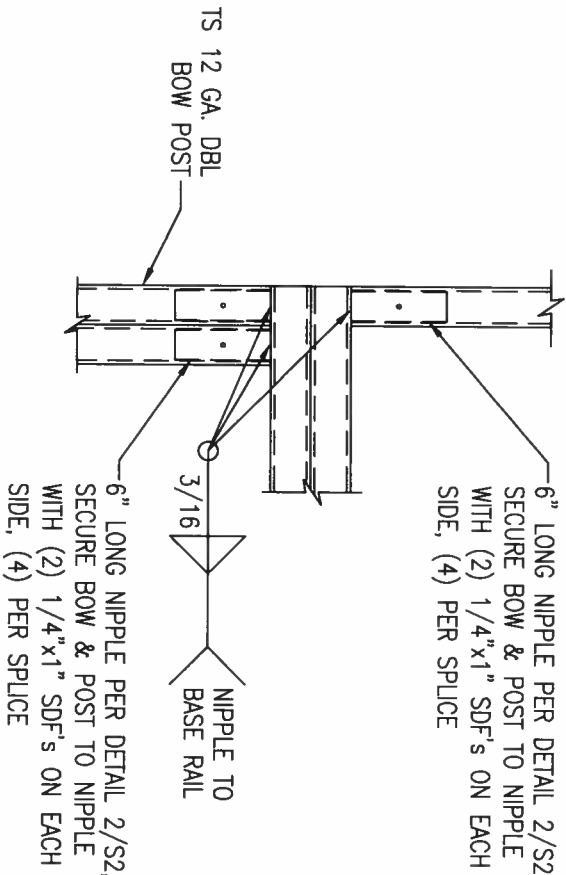
OVERALL LENGTH VARIES (100'-0" MAX.)
DEPENDS ON NUMBER AND SPACING OF BOWS



SIDE OPENING

NTS.

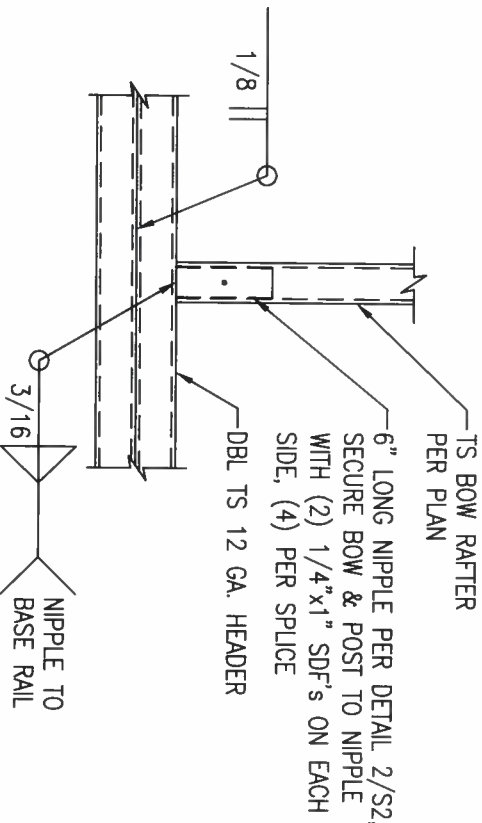
1



BOW/POST DETAIL

NTS.

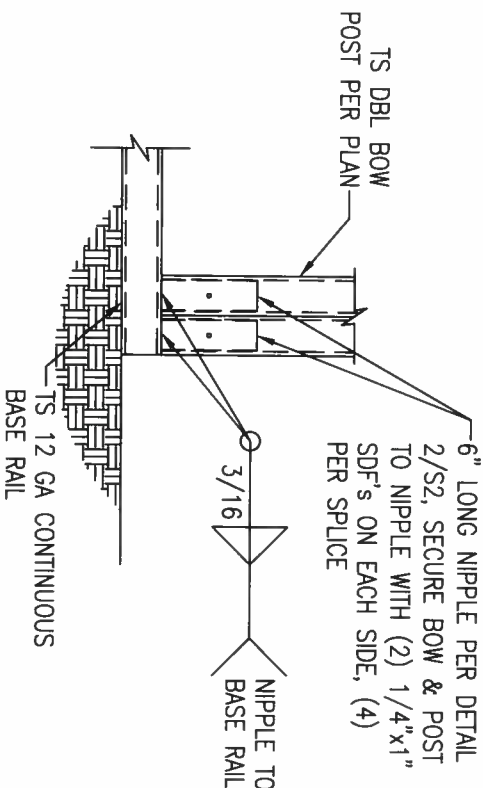
2



BOW/HEADER DETAIL

NTS.

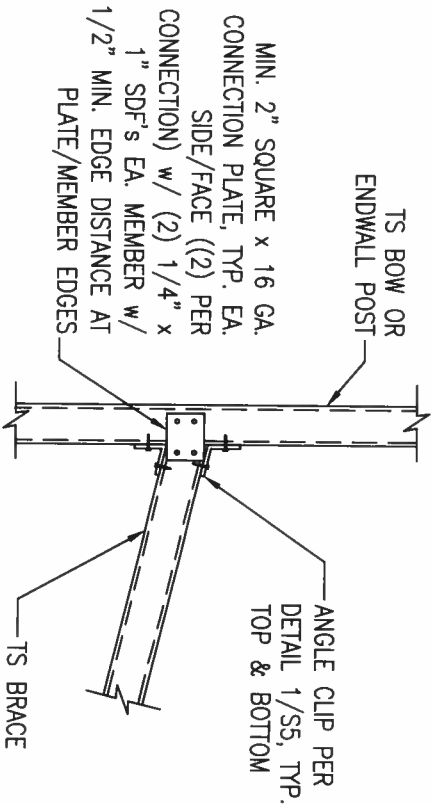
3



BOW/BASE RAIL CONN DETAIL

NTS.

4



BRACE CONNECTION DETAIL

NTS.

5

DESIGNED EXCLUSIVELY FOR
ALL METAL
BUILDINGS

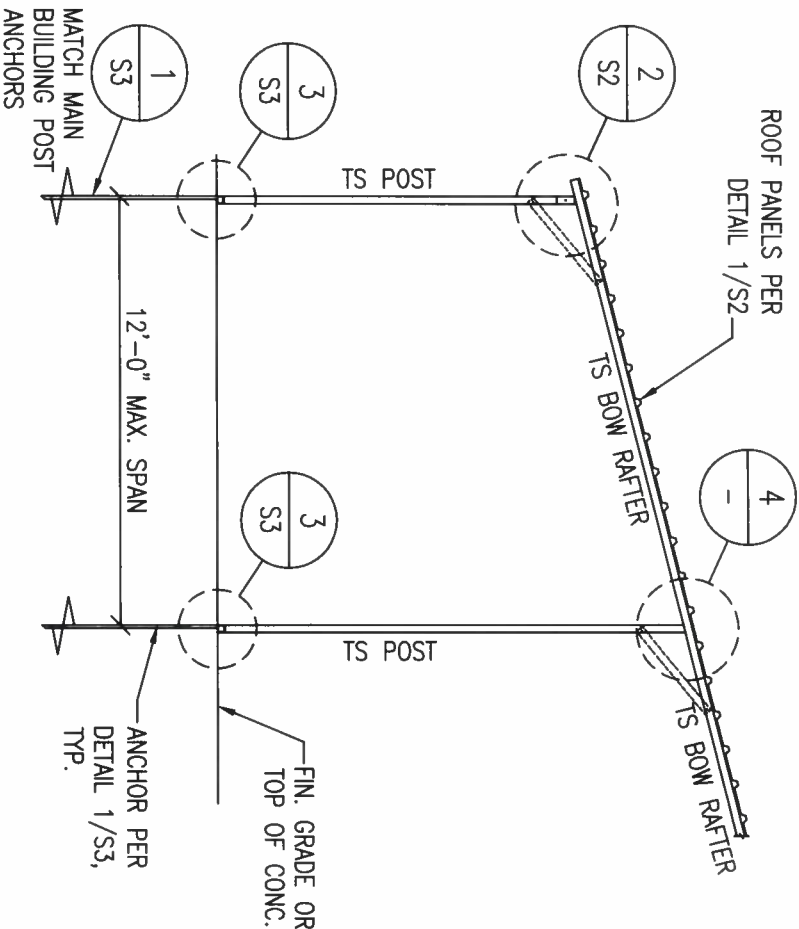
REVISIONS	
DATE	DESCRIPTION

ENGINEER

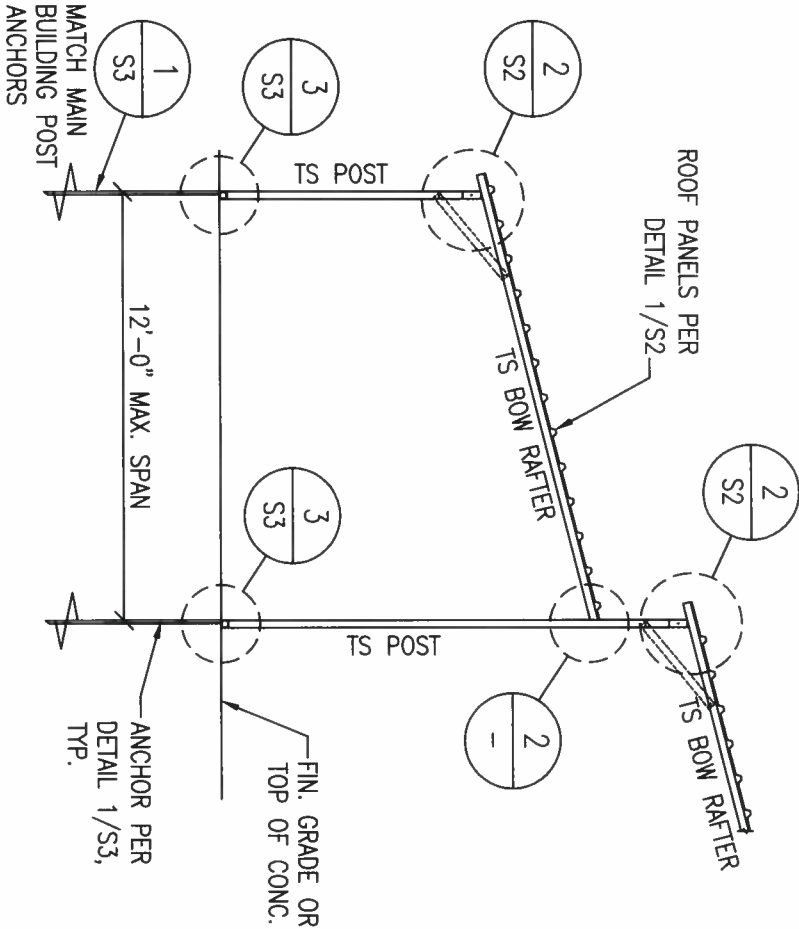
GREGORY S. BARFIELD, P.E.
2149 NELL PURVIS RD.
ADEL, GA 31620
LICENSE # 54419



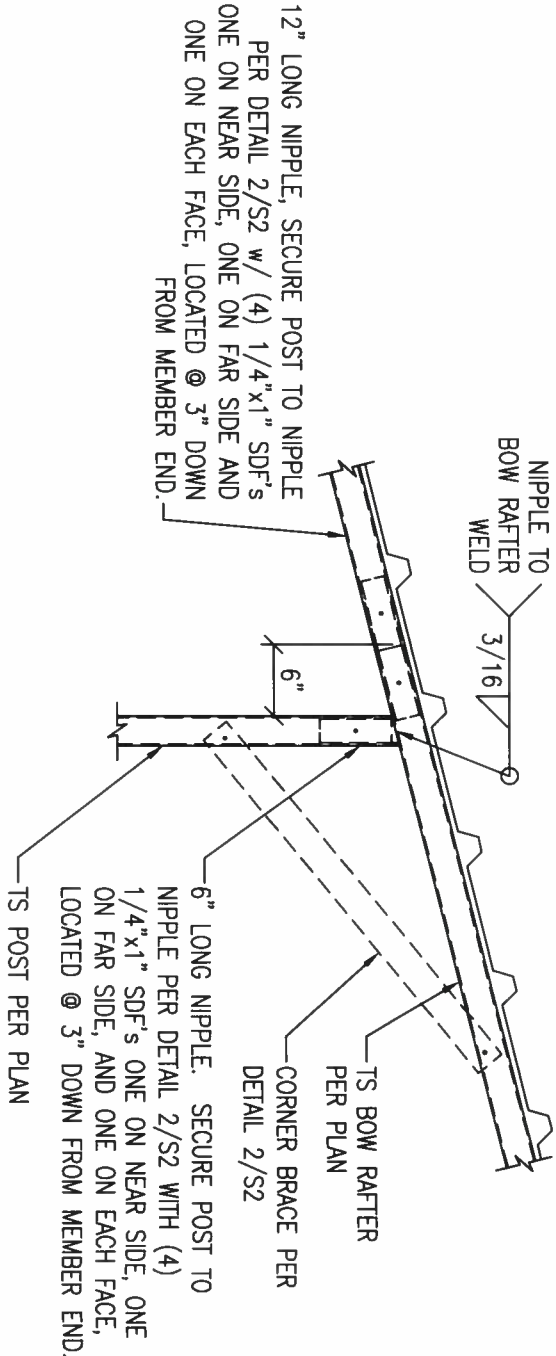
ELEVATION VIEW & NOTES		
STANDARD CARPORT WITH OPTIONS		KARL KOLACIA 4300 SW CR 18 FT WHITE, FL 32038



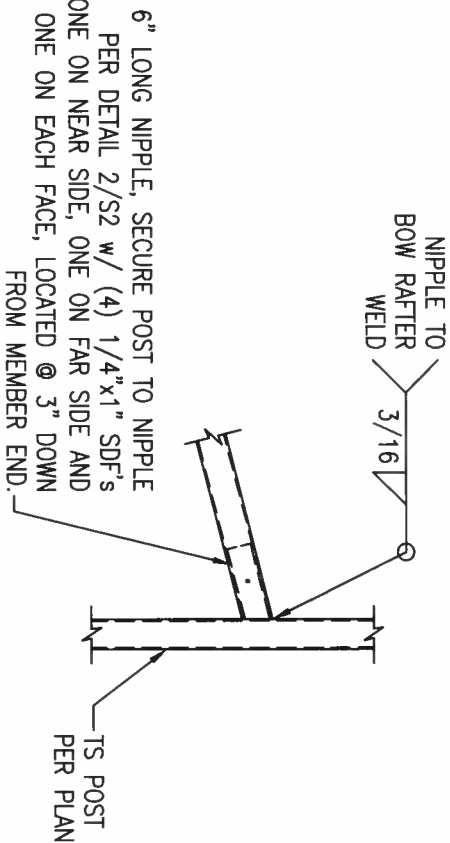
N-LINE EXTENSION SECTION
NTS. **3**



STEP-DOWN EXTENSION SECTION
NTS. **1**



N-LINE CONNECTION DETAIL
NTS. **4**



STEP-DOWN CONNECTION DETAIL
NTS. **2**

S8	
0	REV

OVERALL LENGTH VARIES
(SEE DETAIL 1/S1)

SIMPSON CS16 GALVANIZED 18 GA. COIL
STRAP X-BRACING ON ROOF (BENEATH
ROOF PANELS & FLOORING CHANNELS
WHERE OCCUR), CORNER TO OPPOSITE
CORNER, FASTENED TO TOP OF EACH
BOW RAFTER WITH (2) 1/4"x1" SDF

TS 14 GA. DIAGONAL
BRACE EA. END BAY.
ATTACH TO BOW
LEGS/ENDWALL POSTS
PER DETAIL 5/S7,
TYP. EA. END

CORNER ANCHOR PER DETAIL
1/S1 & SHEET S3, TYP.

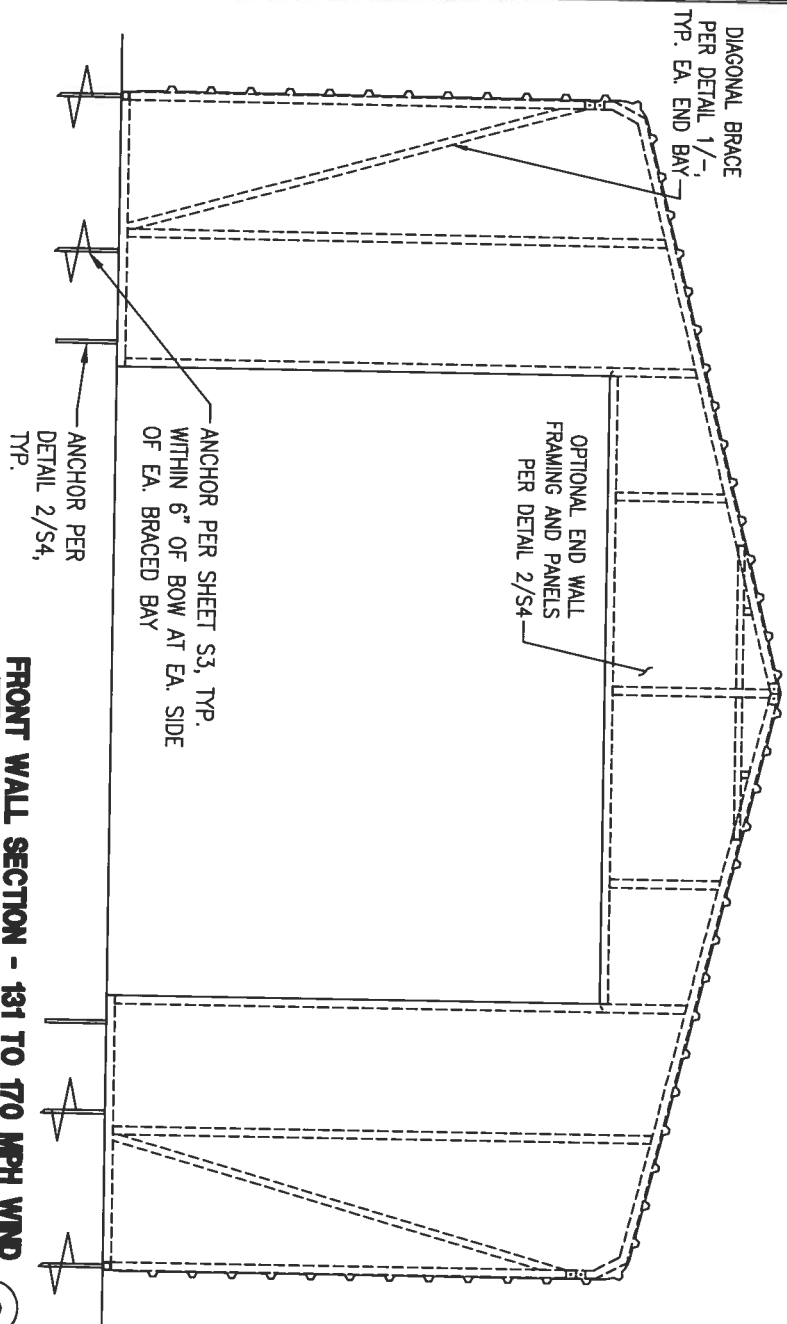
(2) ADDITIONAL DIAGONAL BRACES PER NOTE THIS DETAIL AT CENTER BAYS AND AT 20'-0" O.C. MAX. WHERE OVERALL
LENGTH EXCEEDS 20'-0" FOR BUILDING WITH ENCLOSED END (FRONT AND REAR) WALLS AND AT 30'-0" O.C. MAX.
WHERE OVERALL LENGTH EXCEEDS 30'-0" FOR BUILDING WITH OPEN END (FRONT AND REAR) WALLS

ANCHOR PER SHEET S3, TYP.
WITHIN 6" OF BOW AT EA. SIDE
T O - EA. BRACED BAY

SIDE ELEVATION - 131 TO 770 MPH WIND

NTS.

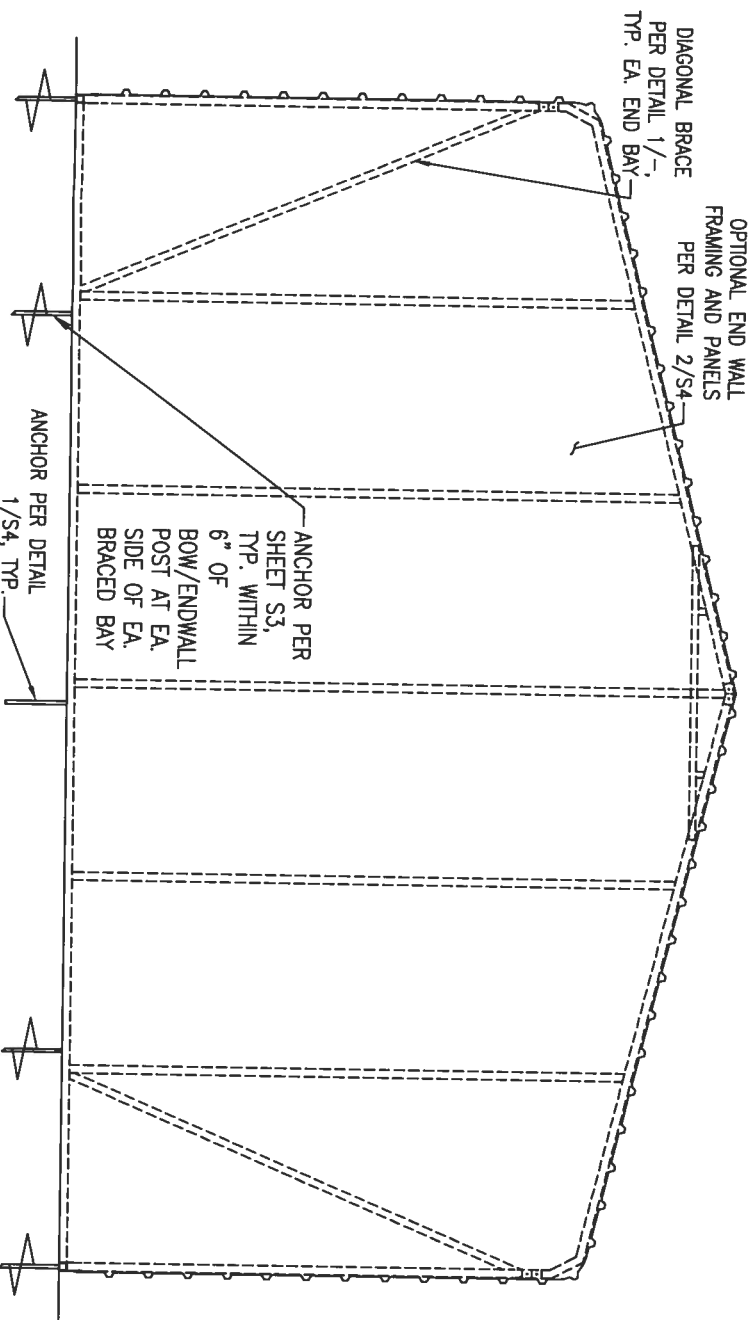
1



FRONT WALL SECTION - 131 TO 770 MPH WIND

NTS.

3



REAR WALL SECTION - 131 TO 770 MPH WIND

NTS.

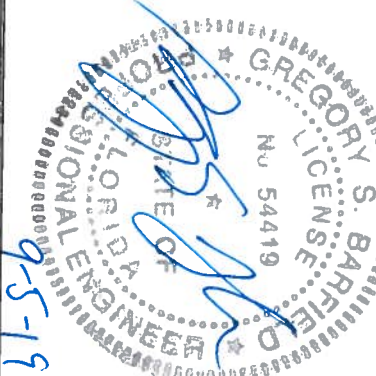
2

DESIGNED EXCLUSIVELY FOR
**ALL METAL
BUILDINGS**

REVISIONS	
DATE	DESCRIPTION

ENGINEER

GREGORY S. BARFIELD, P.E.
2149 NELL PURVIS RD.
ADEL, GA 31620
LICENSE # 54419



ELEVATION VIEW & NOTES

**STANDARD CARPORT
WITH OPTIONS**

KARL KOLACIA
4300 SW CR 18
FT WHITE, FL 32038

S9

REV
0