

MAMA JEANETTE'S RESTAURANT

2932 N. U.S. HIGHWAY 441
LAKE CITY, FL 32055

MAY 14, 2019

OWNER

CECILIA DAVIS
2932 N. U.S. HIGHWAY 441
LAKE CITY, FL 32055
386.234.9015
mamajeanettes@gmail.com

CIVIL ENGINEER

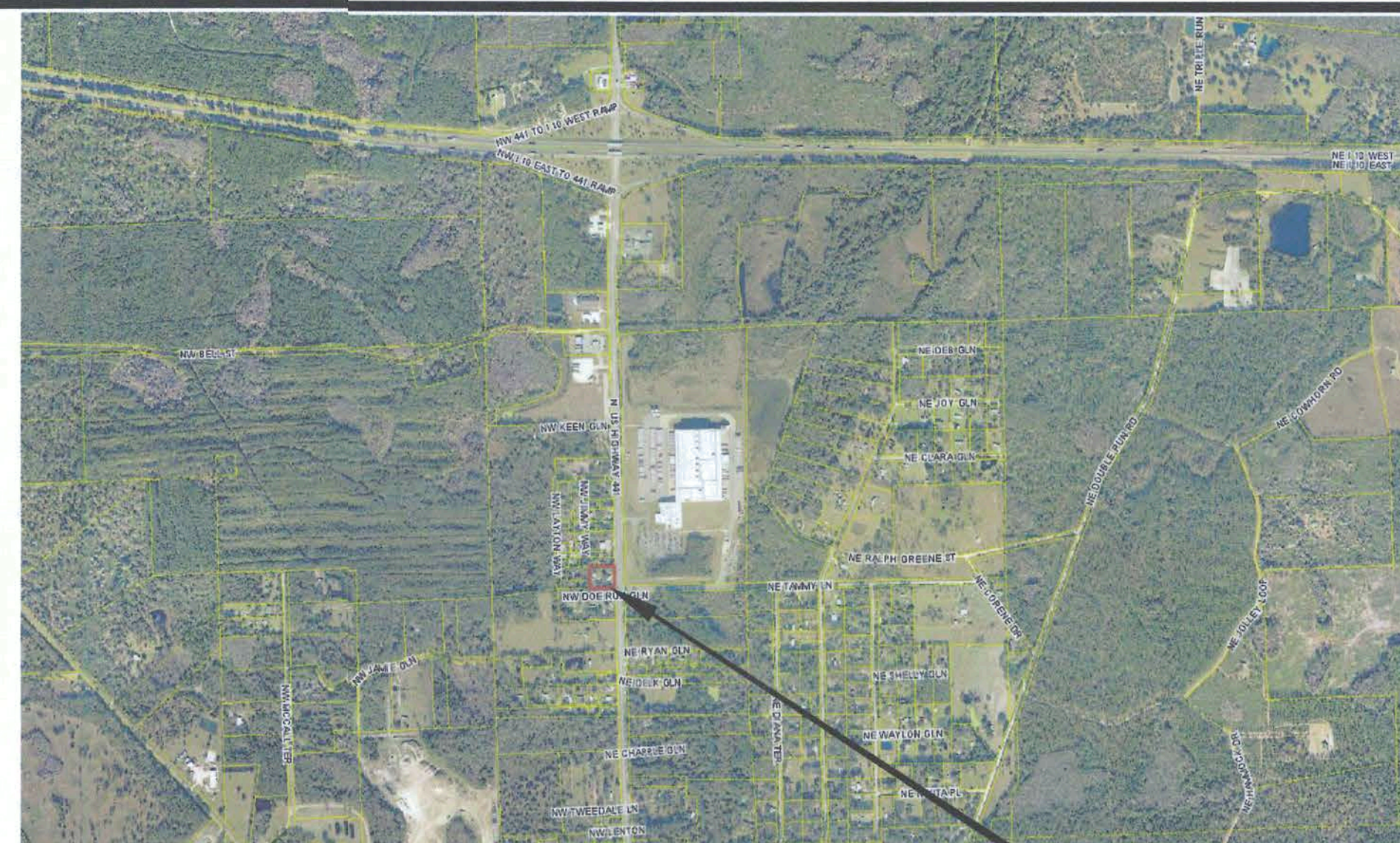
CAROL CHADWICK, P.E.
1208 S.W. FAIRFAX GLEN
LAKE CITY, FL 32025
307.680.1772
ccpewyo@gmail.com

ELECTRICAL ENGINEER

GATOR ELECTRICAL ENGINEERING
2222 MALACHITE DRIVE
LAKELAND, FL 33810
tech.eng@verizon.com

GENERAL CONTRACTOR

NUJAK COMPANIES, INC.
714N. MASSACHUSETTS AVENUE
LAKELAND, FL 33801
863.686.1565
CONTACT: FRANK KENDRICK
fkendrick@nujak.com



LOCATION MAP
NOT TO SCALE



GENERAL NOTES

1. ALL WORK SHALL CONFORM TO ALL APPLICABLE BUILDING CODES, SPECIFIC BUILDING RESTRICTIONS AND INDUSTRY CONSTRUCTION STANDARDS AND SPECIFICATIONS.
2. FOR THESE DOCUMENTS, THE TERMS 'OWNER' AND 'TENANT' ARE INTERCHANGEABLE.
3. GENERAL CONTRACTOR IS TO MAINTAIN LIFE SAFETY AND EMERGENCY EGRESS FUNCTIONALITY DURING CONSTRUCTION. GC SHALL PROVIDE CONSTRUCTION BARRIERS AS REQUIRED AND COORDINATE WITH TENANT.
4. DIMENSIONS AND CONDITIONS INDICATED IN THESE DRAWINGS ARE BASED ON DOCUMENTS AND INFORMATION PROVIDED. GC SHALL VERIFY EXISTING ACTUAL CONDITIONS AND DIMENSIONS AND NOTIFY THE ARCHITECT / TENANT OF ANY DISCREPANCIES PRIOR TO ORDERING MATERIALS AND COMMENCEMENT OF WORK.
5. PROTECT ALL EXISTING MATERIALS AND FURNISHINGS DESIGNED TO REMAIN. DAMAGED ITEMS SHALL BE REPLACED COMPLETELY BY THE GENERAL CONTRACTOR TO THE ITEM'S CONDITION AT COMMENCEMENT OF THE PROJECT . CONSTRUCTION PERFORMED ADJACENT TO EXISTING MATERIALS SHALL BLEND IN TEXTURE, FINISH AND COLOR WHEN FINISHED SO AS TO NOT BE DETECTABLE.
6. IF POWER MUST BE CUT OFF TEMPORARILY, NOTIFY THE TENANT 24 HOURS MINIMUM IN ADVANCE OF THE SCHEDULED CUT OFF TIME.
7. DURING CONSTRUCTION, GENERAL CONTRACTOR SHALL PARK VEHICLES AND EQUIPMENT, ETC. IN A LOCATION APPROVED BY TENANT.
8. DIMENSIONS SHOWN ARE TO FACE OF CONCRETE, CONCRETE MASONRY UNITS (CMU) OR FACE OF STUDS UNLESS NOTED OTHERWISE (UNO).

SHEET INDEX

[illegible]

C:\CONSULTING\BLDG\14\0323\01 LIFE SAFETY PLAN.dwg, 5/14/2019, 1:05:22 PM



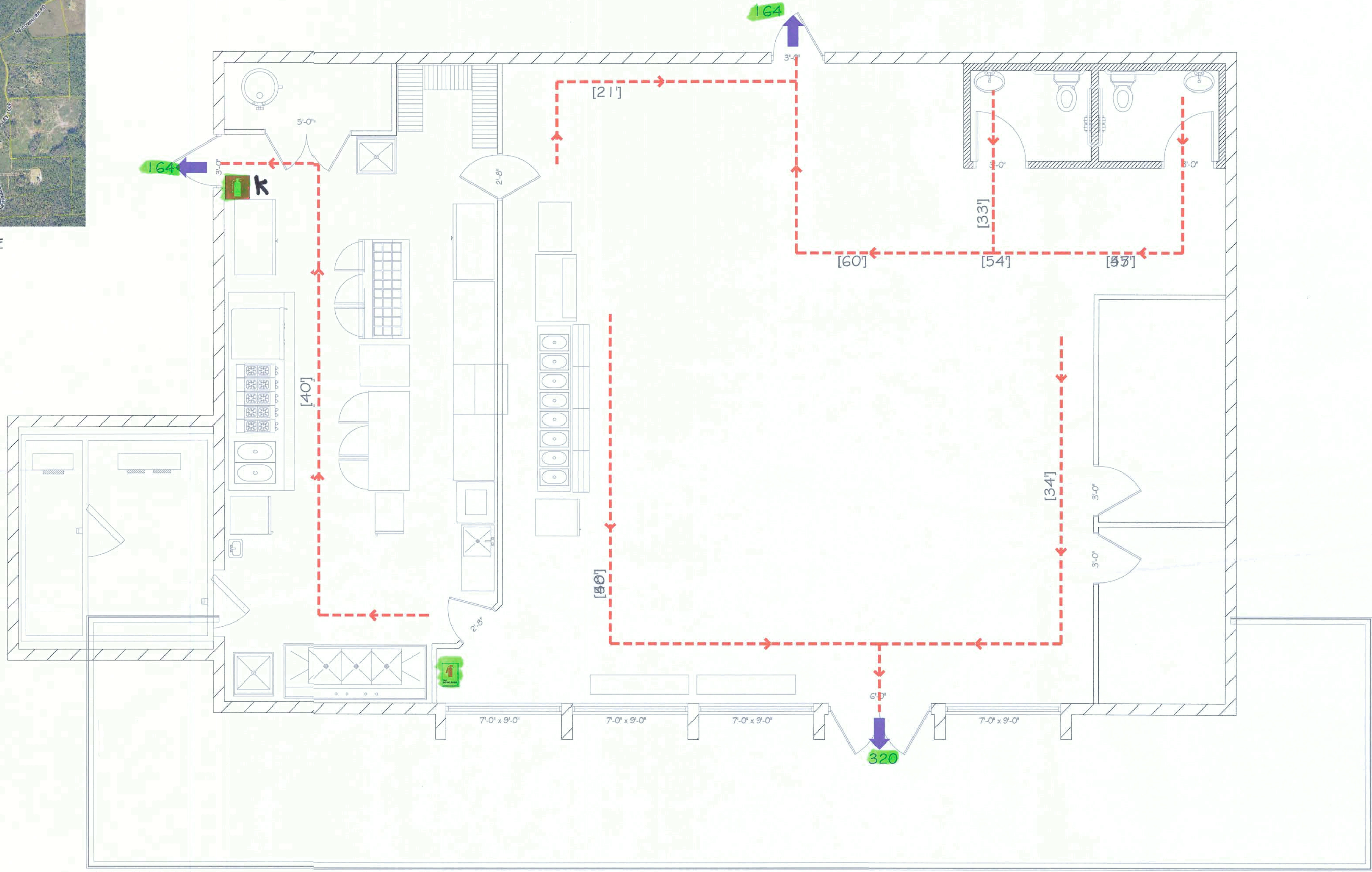
LOCATION MAP
NOT TO SCALE

PROJECT SITE

MAMA JEANETTE'S RESTAURANT LIFE SAFETY PLAN

2932 US HIGHWAY 441, LAKE CITY, FL 32055
COLUMBIA COUNTY, FLORIDA

PROJECT DESCRIPTION	AN EXISTING BUILDING IS BEING REMODELED FOR USE AS A RESTAURANT WITH A CHANGE IN OCCUPANCY		
CODES IN EFFECT	FLORIDA BUILDING CODES 2017, 6TH ED. FLORIDA FIRE PREVENTION CODE, 6TH ED. NFPA 101 LIFE SAFETY CODE 2018 NATIONAL ELECTRIC CODE 2014		
SUBJECT	REFERENCE	APPLICATION	PROVIDED
OCCUPANCY	EXISTING BUILDING - FBC SECTION 304.1	ASSEMBLY GROUP A-2	ASSEMBLY GROUP A-2
CONSTRUCTION TYPE	TABLE 601 - TYPE I B	TYPE I B	TYPE I B
AUTOMATIC SPRINKLERS	REQUIRED -	NOT REQUIRED	NOT PROVIDED
ALLOWABLE BUILDING AREA, MAX. (PER FLOOR)	TABLE 506.2 - A 3 TYPE I B -	UNLIMITED	2,665 S.F.
CLASSIFICATION SEPARATION	NO ADJACENT UNATTACHED BUILDINGS		
HEIGHT, MAX.	TABLE 504.3 - TYPE I B -	180 FEET	20 FEET (APPROX.)
EXITS, REQUIRED	TABLE 1006.3.1 -	2 REQUIRED	2 PROVIDED
EXIT TRAVEL, MAX.	TABLE 1017.2 -	OCCUPANCY A WITHOUT SPRINKLERS - 200 FT.	MAX. 58 FT.
CORRIDOR DEAD END LIMIT	FBC SECTION 1020.4 -	20 FT. MAX	NONE
EGRESS (OCCUPANT LOAD) EGRESS REQUIREMENTS	TABLE 1004.1.2 - UNCONCENTRATED (TABLES AND CHAIRS) -	15 NET* 1405 S.F. = 94	60 ASSEMBLY 2 BATHROOMS 6 KITCHEN 1 OFFICE 69 TOTAL
PLUMBING FIXTURE REQUIREMENTS WATER CLOSETS	TABLE 2902.1 - MALE - FEMALE -	1 PER 15: 1 REQUIRED 1 PER 15: 1 REQUIRED	1 PROVIDED 1 PROVIDED
PLUMBING FIXTURE REQUIREMENTS LAVATORIES	TABLE 2902.1 - MALE - FEMALE -	1 PER 100: 1 REQUIRED 1 PER 100: 1 REQUIRED	1 PROVIDED 1 PROVIDED
DRINKING FOUNTAINS	TABLE 2902.1 -	1 PER 100: 1 REQUIRED	FREE DRINKING WATER SUPPLIED
SERVICE SINK	TABLE 2902.1 -	1 REQUIRED	1 PROVIDED



FLOOR PLAN
1/4" = 1'

- LEGEND**
- [XX'] --- PRIMARY EMERGENCY EGRESS ROUTE TRAVEL DISTANCE
 - XXX EXIT DISCHARGE POINT AND NUMBER OF OCCUPANTS SERVED
 - 1 FIRE EXTINGUISHER BRACKET MOUNTED ON WALL (4-A-60-B-C, 10 LB TYPE). TOP OF EXTINGUISHER 50" AFF. EXTINGUISHERS IN KITCHENS ARE CLASS 'K'.
 - 1 FIRE EXTINGUISHER IN RECESSED CABINET (4-A-60-B-C, 10 LB TYPE). CENTER OF CABINET AT 42" AFF.

APPROVED (Subject to Revisions)
Life Safety Services
Columbia County Fire Rescue
Florida State Fire Inspector # 19641
By: [Signature] Date: 6/15/19

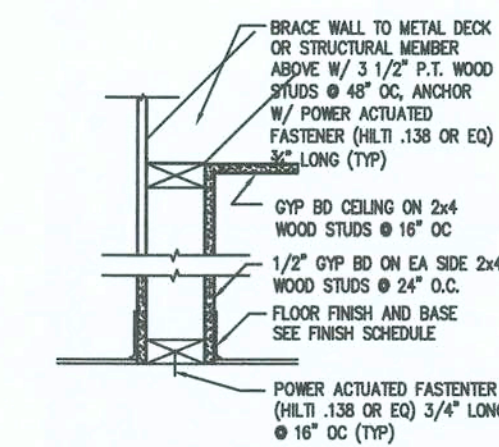
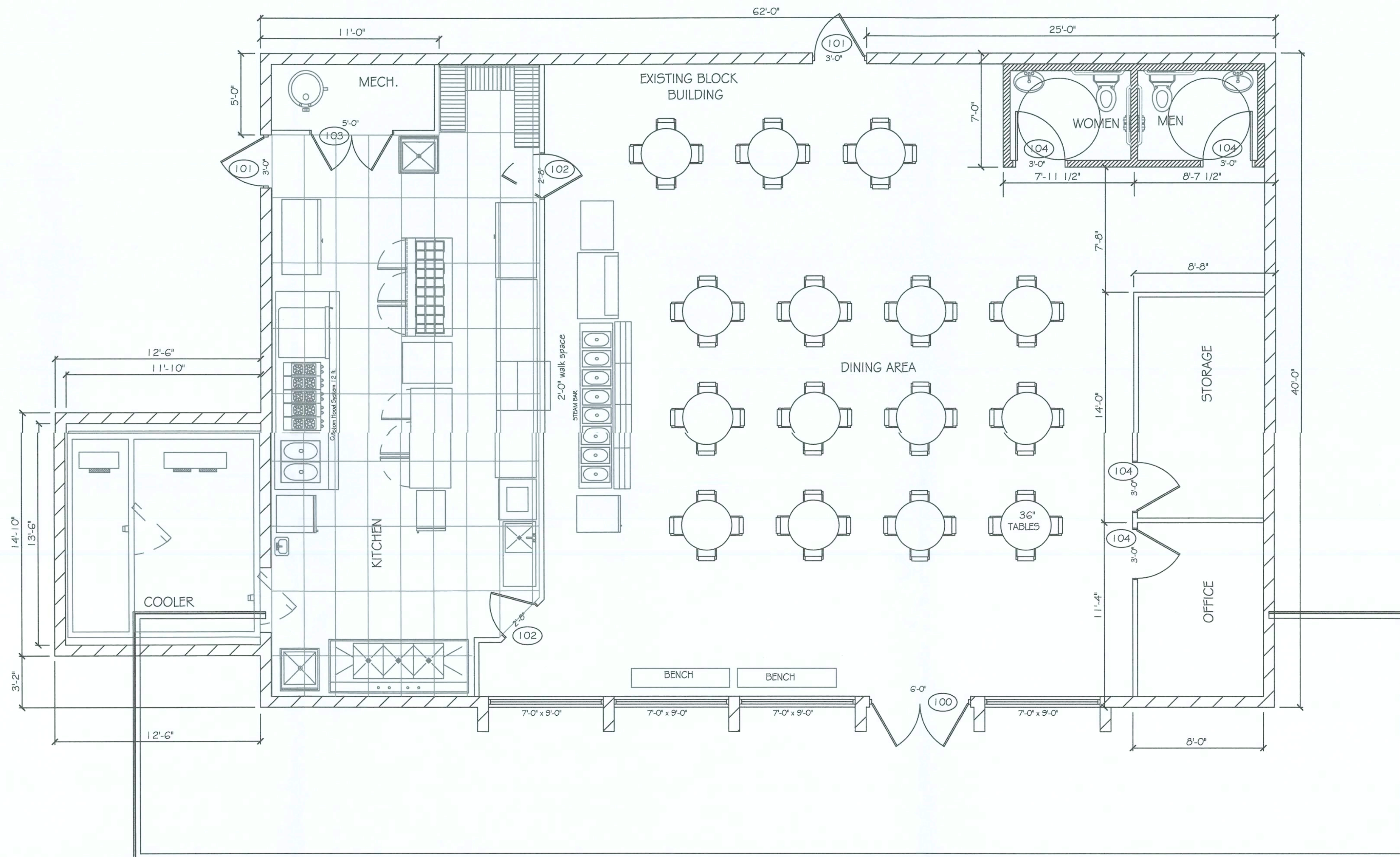


PROJECT: MAMA JEANETTE'S RESTAURANT
DATE: 6/15/19
DRAWN BY: CAROL J. CHADWICK
CHECKED BY: CAROL J. CHADWICK
SCALE: AS SHOWN

APPROVED (Subject to Revisions)
Life Safety Services
Columbia County Fire Rescue
Florida State Fire Inspector # 19641
By: [Signature] Date: 6/15/19

CAROL J. CHADWICK
LICENSE NO. 82560
STATE OF FLORIDA
PROFESSIONAL ENGINEER

PROJECT: MAMA JEANETTE'S RESTAURANT
DATE: 6/15/19
DRAWN BY: CAROL J. CHADWICK
CHECKED BY: CAROL J. CHADWICK
SCALE: AS SHOWN

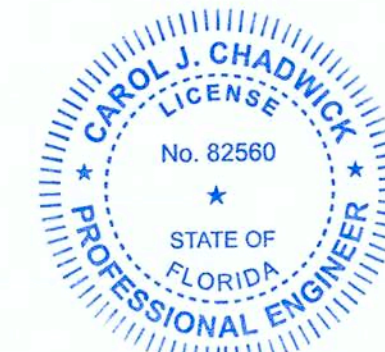


TYPICAL WALL SECTION DETAIL
1/12" = 1'

FLOOR PLAN
1/4" = 1'

DOOR SCHEDULE													
DOOR NO.	SIZE	DOOR			HWDW SET	FRAME			FIRE RATING	DETAILS			NOTES
		MAT.	FINISH	TYPE		MAT.	FINISH	TYPE		HEAD	JAMB	SILL	
100	6'-0" x 7'-0"	METAL	PANT	A	---	HM	PANT	1	N/A	H1	J1	---	
101	3'-0" x 7'-0"	METAL	PANT	A	---	HM	PANT	1	N/A	H1	J1	---	
102	2'-8" x 7'-0"	SC WOOD	PANT	A	---	HM	PANT	1	N/A	H1	J1	---	
103	5'-0" x 7'-0"	SC WOOD	PANT	A	---	HM	PANT	1	N/A	H1	J1	---	
104	3'-0" x 7'-0"	SC WOOD	PANT	A	---	HM	PANT	1	N/A	H1	J1	---	
DOOR SCHEDULE GENERAL NOTES													
1. EXCEPT AS SPECIFICALLY PERMITTED BY SECTION 1008.1.8, EGRESS DOORS SHALL BE READILY OPENABLE FROM THE EGRESS SIDE WITHOUT THE USE OF A KEY OR SPECIAL KNOWLEDGE OR EFFORT. DOORS DESIGNATED AS EXITS MAY REQUIRE PANIC DEVICES, SEE SCHEDULE AND COMPLY WITH APPLICABLE CODES.													
2. HARDWARE OPERATION SHALL BE PER OWNER'S REQUIREMENTS AND COMPLY WITH IFBC AND WPA 101.													
3. NEW HARDWARE SHALL BE LEVER TYPE HANDLES, ADA COMPLIANT AND HARDWARE TO BE COORDINATED WITH THE OWNER AND LANDLORD													

ROOM FINISH SCHEDULE			
FLOOR	BASE	WALLS	CEILING
1 SEALED EXISTING CONC	A 4" VINYL BASE	1 PAINT - EXISTING AND NEW GWB	A OPEN
2	B	2	B ACOUSTICAL TILE, VINYL FACED 2X4, WHITE, KITCHEN AREA ONLY
3	C	3	C
1. EXISTING CONC SLAB TO BE CLEANED AND SEALED TO REMAIN CONCRETE. 2. EXISTING BLOCK WALL AND NEWLY EXPOSED AREAS TO BE CLEANED AND PREPPED FOR PAINT.			

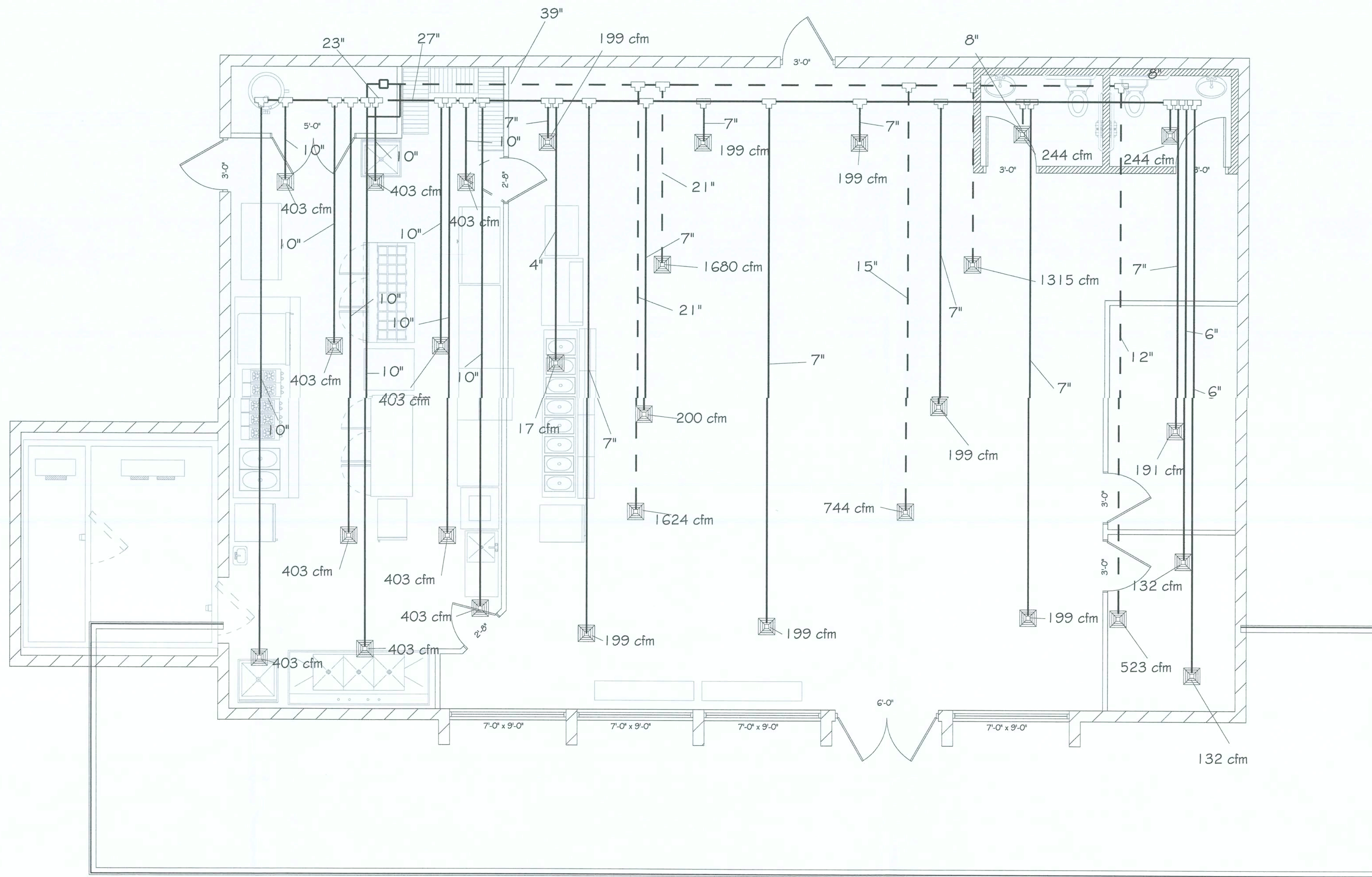


PROJECT BY
CAROL J. CHADWICK
180 SW 98th AVE
MIAMI, FL 33155
305.224.1015
mama@caroljchadwick.com

REGISTERED PROFESSIONAL ENGINEER
STATE OF FLORIDA
LICENSE NO. 82560

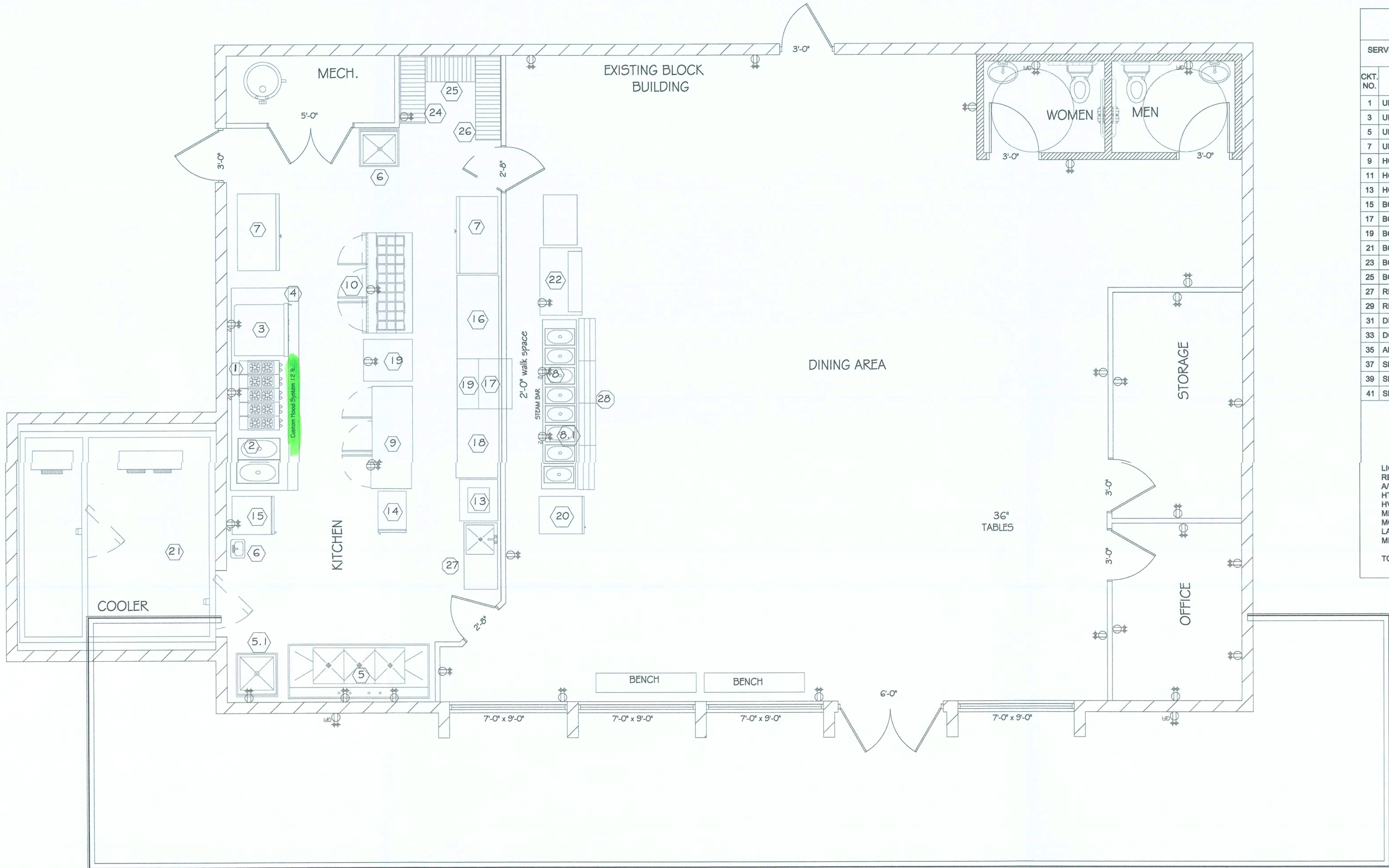
DATE
03

MAMA JEANETTE'S RESTAURANT
FLOOR PLAN



MECHANICAL PLAN
1/4" = 1'

PROJECT NO. FL00032	PROJECT NAME MAMA JEANETTE'S RESTAURANT	DESIGNED BY CAROL CHADWICK, P.E.	DATE MAY 14, 2019
REVISION NO. 04	REVISION DATE MAY 14, 2019	REVISION DESCRIPTION MAMA JEANETTE'S RESTAURANT	REVISION NO. 04
PROJECT ADDRESS 1900 SW DIXIE BLVD, SUITE 100 MIAMI, FL 33135 TEL: 305.224.2015 WWW.MAMAJEANETTES.COM		PROJECT LOCATION MAMA JEANETTE'S RESTAURANT	

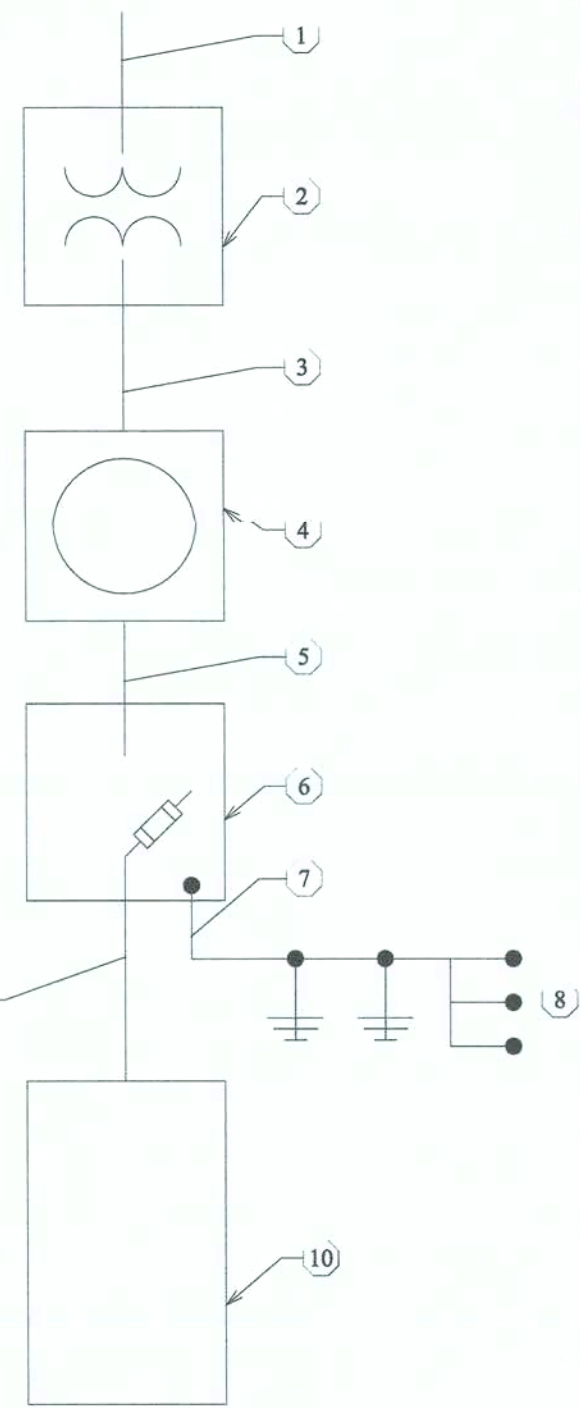


ELECTRICAL PLAN
1/4" = 1'

1	Impenal Model No. IR-10	RANGE, 60", 10 OPEN BURNERS
2	Impenal Model No. IF5-40	GAS FLOOR FRYER
3	Impenal Model No. ICVG-2	CONVECTION OVEN, GAS
4	Custom Hood System 12 FT	HOOD SYSTEM 12 FT
5	Klinger's Trading Model No. EIT32D18	THREE COMPARTMENT SINK
5.1	Klinger's Trading Model No. EC51-2424	ONE COMPARTMENT SINK
6	Klinger's Trading Model No. KLG-FM5-2523	MOP SINK
7	Asber Model No. ARR-49	REACH-IN REFRIGERATOR
8	Duke Manufacturing Model No. E3045W	SERVING COUNTER, HOT FOOD, ELECTRIC
8.1	10 ft. Custom Sneeze Guard	10 FT CUSTOM SNEEZE GUARD
9	Asber Model No. AUTR-72	UNDERCOUNTER REFRIGERATOR
10	Asber Model No. APTM-72-30	MEGA TOP SANDWICH / SALAD PREPARATION REFRIGERATOR
11	Admiral Craft Model No. BDFM-20	PLANETARY MIXER
12	Klinger's Trading Model No. MX-3030	EQUIPMENT STAND, FOR MIXER / SLICER
13	Hoshizaki Model No. KML-500MAJ	ICE CUBER
14	Admiral Craft Model No. PW 120C	PROOFER CABINET, MOBILE
15	Asber Model No. ARF-23	REACH-IN FREEZER
16	Klinger's Trading Model No. AST-3060	WORK TABLE, STAINLESS STEEL TOP
17	Advance Tabco Model No. PA-24-36	PASS-THRU SHELF
18	Klinger's Trading Model No. AST-3048	WORK TABLE, STAINLESS STEEL TOP
19	Klinger's Trading Model No. AST-3036	WORK TABLE, STAINLESS STEEL TOP
20	Asber Model No. ARMD-23A	REFRIGERATED MERCHANDISER
21	Custom Model No. AMERIKOOLER	WALK IN COOLER/COMBINATION
22	Fogel USA Model No. ELITE-4-DC-B	DISPLAY CASE, REFRIGERATED DELI
22.1	True Manufacturing Co., Inc. Model No. G45M-23RG5-TSLO1	DISPLAY CASE, VERTICAL GLASS SIDES
23	Flash Furniture Model No. CH-51090TH-4-18CAFE-RED-GG	CHAIR # TABLE SET, OUTDOOR
24	Klinger's Trading Model No. CH-1848	WIRE SHELVING
25	Klinger's Trading Model No. CH-1836	WIRE SHELVING
26	Klinger's Trading Model No. CH-1860	WIRE SHELVING
27	Klinger's Trading STB2448BR	PREP SINK
28	Duke F3BTS-FX-3	3 BAR TRAY SLIDE

ELECTRICAL RISER KEYNOTES

1. PRIMARY VOLTAGE 13.2 KV (L TO L)
2. POLE TYPE TRANSFORMER 50 KVA
3. OVERHEAD DROP, TOO 3/0 ALUMINUM CONDUCTOR AND NEUTRAL CONDUCTOR.
4. BILLING METER RATED 300 AMPS 120/240 VOLTS. METER CAN SHALL MEET REQUIREMENTS FOR FP&L
5. CLOSE NIPPLE WITH THREE 3/0 ALUMINUM CONDUCTORS
6. FUSED DISCONNECT WITH TWO 300 AMPERE 250 VOLT FUSES DISCONNECT SHALL BE SERVICE ENTRANCE RATED, NEMA 3R.
7. SERVICE ENTRANCE GROUND CONDUCTOR SHALL BE #4 COPPER CONDUCTOR WITH TWO 10FT. COPPER CLAD GROUND RODS, SPACE MINIMUM 6FT APART.
8. CONNECT GROUND CONDUCTOR TO FOOTER STEEL, BUILDING STEEL, GAS LINE, AND COLD WATER PIPE IF AVAILABLE.
9. ONE PVC SCHEDULE 40 THREE INCH WITH (3) 500 KCMIL CONDUCTORS AND ONE #2 ALUMINUM GROUND CONDUCTOR.
10. BREAKER PANEL MAIN LUGS ONLY, 120/240 VOLTS, 42 SPACES, NEMA 1.



ELECTRICAL RISER
SCALE: NTS

ELECTRICAL RISER GENERAL NOTES

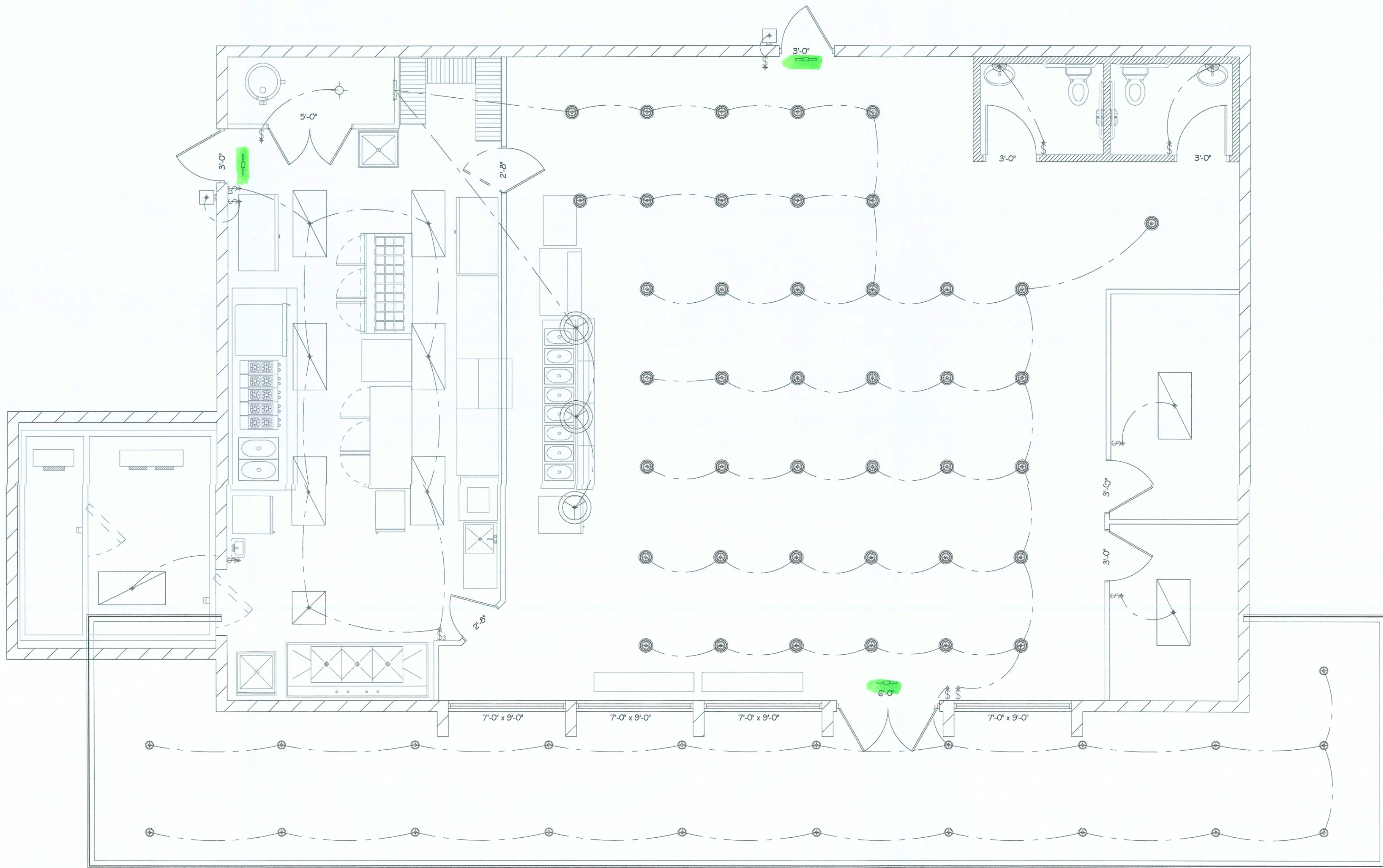
1. ELECTRICAL CONTRACTOR (EC) SHALL MAKE ALL REQUIRED FIELD CHANGES WHICH MAY DEVIATE FROM THESE PERMIT DOCUMENTS IN CASE ACTUAL EQUIPMENT WHICH MAY ARRIVE ON SITE DEVIATING FROM WHAT INFORMATION WAS TRANSMITTED TO THE ENGINEER AT THE TIME THESE DOCUMENTS WERE PREPARED.
2. ALL INSTALLATIONS SHALL COMPLY WITH THE CURRENT VERSION OF THE NEC, FLORIDA BUILDING CODES AND FLORIDA POWER AND LIGHT REQUIREMENTS WHICH ARE IN EFFECT FOR THIS JURISDICTION DURING THIS PROJECT.
3. EC SHALL COORDINATE ALL WORK WITH THE GENERAL CONTRACTOR, OWNER, AND ELECTRIC ENGINEER.

THIS PLAN WAS DESIGNED BY
GATOR ELECTRICAL ENGINEERING.
THE ENGINEER OF RECORD IS NOT
RESPONSIBLE FOR THE
ELECTRICAL DESIGN.

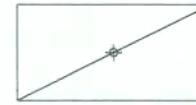







PANEL: P			TYPE: NGOOD		LOCATION: KITCHEN										
SERVICE: 120/240 V 1Ø, 3W			MAIN: 300 AMP MLO		RATING: 10 KAIC										
CKT. NO.	DESCRIPTION	NOTES	C. BKR.			LOAD KVA / PHASE			C. BKR.			NOTES	CKT. NO.		
			A	P	B	A	B	A	P	B					
1	UNIT #1 CONDENSING UNIT		AC NC	40	2	3.24		6.96		60	2	H NC	UNIT #1 AIR HANDLER	2	
3	UNIT #1 CONDENSING UNIT		AC NC				3.24		6.96			H NC	UNIT #1 AIR HANDLER	4	
5	UNIT #2 CONDENSING UNIT		AC NC	40	2	0.00		6.96		60	2	H NC	UNIT #2 AIR HANDLER	6	
7	UNIT #2 CONDENSING UNIT		AC NC				0.00		6.96			H NC	UNIT #2 AIR HANDLER	8	
9	HOOD SUPPLY FAN		MISC	1	2	0.83		1.23		20	1	LTG	LIGHTING IN SEATING AREA	10	
11	HOOD SUPPLY FAN		MISC	1			0.83		0.83		20	1	LTG	LIGHTING OUTSIDE AND WALL PACKS	12
13	HOOD EXHAUST FAN		MISC	1	1	0.11		1.28		20	1	LTG	LIGHTING IN KITCHEN AREA	14	
15	BOHN LOW TEMP COOLER COD UNIT		MISC	30	2		1.20		0.91		20	1	MISC	ICE CUBER	16
17	BOHN LOW TEMP COOLER COD UNIT		MISC				1.20		0.14		20	1	MISC	REACH IN REFRIGERATOR	18
19	BOHN DEFROST COOLER		MISC	15	2		0.06		3.00		30	1	MISC	SERVICING COUNTER HOT FOOD	20
21	BOHN DEFROST COOLER		MISC				0.06		0.80		20	1	MISC	UNDER COUNTER REFRIGERATOR	22
23	BOHN CONDENSING MEDIUM UNIT		MISC	25	2		1.80		0.96		20	1	MISC	SANDWICH / SALAD PREP REFRIGERATOR	24
25	BOHN CONDENSING MEDIUM UNIT		MISC				1.80		1.10		20	1	MISC	PLANETARY MIXER	26
27	RECEPTACLES IN DINING AREA 1/2		REC	20	1		1.89		1.02		20	1	MISC	REACH IN REFRIGERATOR	28
29	RECEPTACLES IN DINING AREA 1/2		REC	20	1		1.89		0.73		20	1	MISC	REFRIGERATOR MERCHANDISER	30
31	DISPLAY CASE		MISC	20	1		0.70		0.54		20	1	MISC	DISTRIBUTION CASE	32
33	DOUBLE OVEN (2) LIGHTS		MISC	20	1		0.10		1.66		20	2	MISC	SEWAGE LIFT STATION	34
35	ANSUL HOOD SYSTEM		MISC	20	1		0.01		1.66				MISC	SEWAGE LIFT STATION	36
37	SPACE						0.00		0.00				SPACE		38
39	SPACE						0.00		0.00				SPACE		40
41	SPACE						0.00		0.00				SPACE		42
						9.2	9.7	20.9	22.8						

CAROL CHADWICK P.E.
Professional Engineer
No. 12457
Mechanical
FLORIDA
www.carolchadwick.com
CAROL CHADWICK P.E. & S.

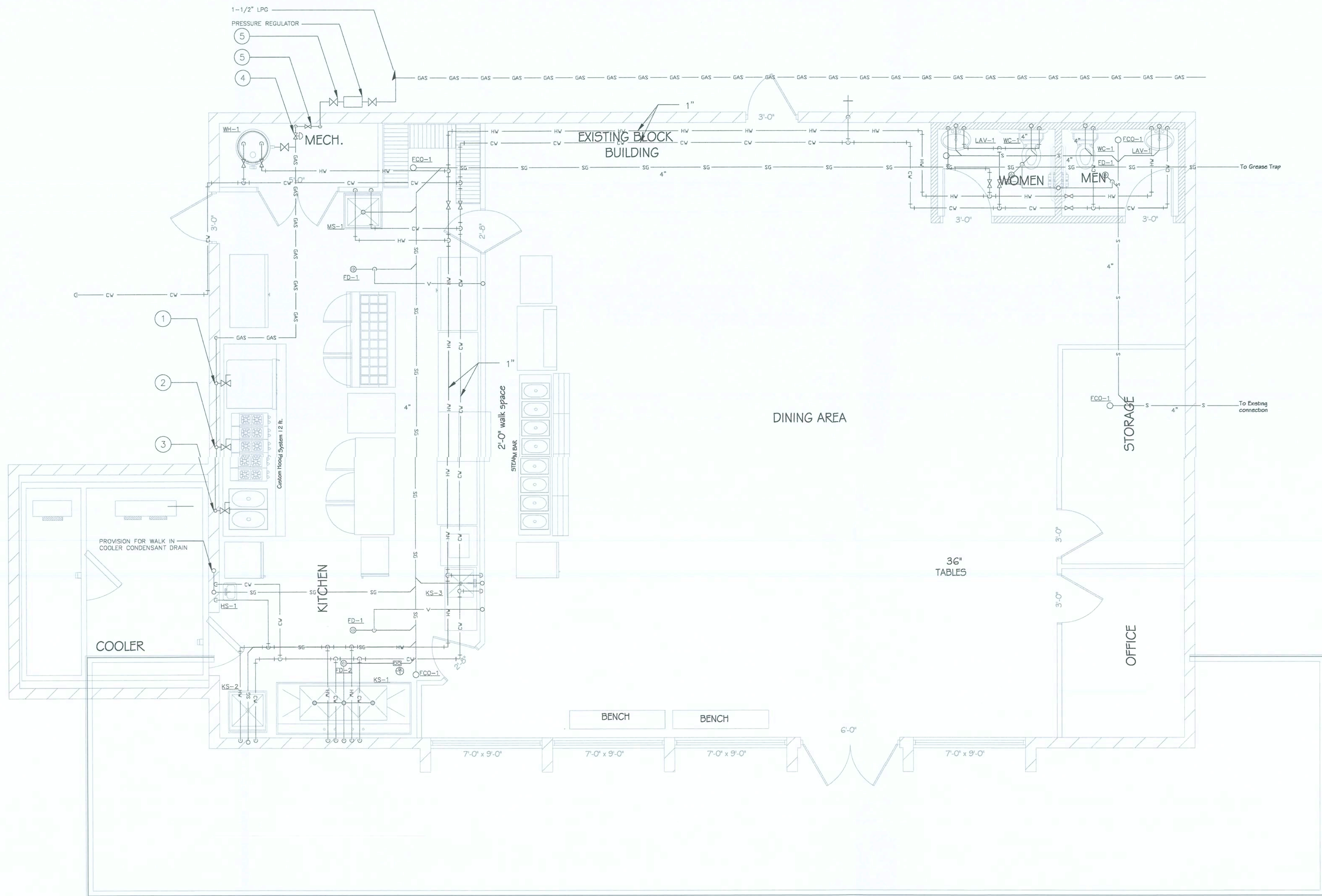
MAJIMA JEANETTE'S RESTAURANT
ELECTRICAL PLAN
PROJECT # 110332
DESIGNED BY GATOR ELECTRICAL ENGINEERING
DATE 11.14.2019
REVISIONS
05



LIGHTING PLAN
1/4" = 1'

- LEGEND
-  FLUORESCENT LIGHT
 -  WALL MOUNTED BATHROOM LIGHT
 -  LIGHTED EXIT SIGN *w/ emergency lighting*
 -  PENDENT LIGHT
 -  LARGE PENDENT LIGHT
 -  WALL MOUNTED EXTERIOR LIGHT
 -  RECESSED CANOPY LIGHT
 -  SWITCH

PROJECT: MAMA JEANETTE'S RESTAURANT LIGHTING PLAN		 CAROL CHADWICK, P.E. State of Florida License No. 12411 www.carolchadwick.com carol@carolchadwick.com
DRAWN BY: CECILIA DAVIS 1500 SW DIXIE BLVD. SUITE 204 MIAMI, FL 33135 cecilia@carolchadwick.com	DATE: MAY 14, 2019 SHEET: 06	



KEY NOTES:

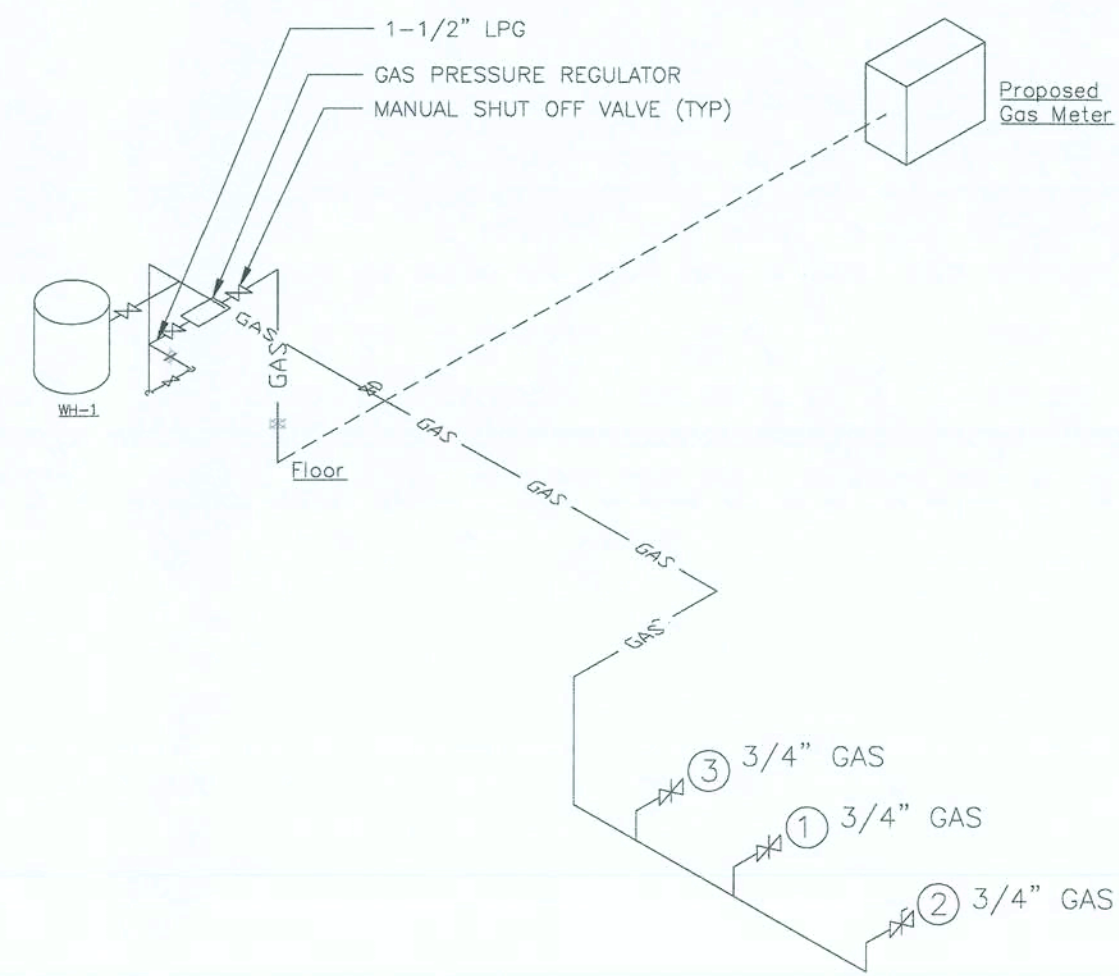
1. RANGE, 60", 10 OPEN BURNERS (32000 BTU/Hr)
2. GAS FLOOR FRYER (34000 BTU/Hr)
3. CONVECTION OVEN, GAS (75000 BTU/Hr)
4. GAS SOLENOID VALVE, INTERLOCK WITH HOOD FIRE SUPPRESSANT
(GAS SOLENOID VALVE FURNISHED BY FOOD SERVICE EQUIPMENT SUPPLIER)
5. MANUAL GAS SHUT-OFF VALVE (IN WALL BOX)

PLUMBING PLAN

1/4" = 1'

FIXTURE	CONNECTION	SIZE
TAG	S	V
MS-1	2"	2"
KS-1	3"	2"
KS-2	2"	2"
KS-3	2"	2"
LAV-1	2"	2"
WC-1	4"	2
HS-1	2"	2"
FD-1	2"	2"
FD-2	3"	2"

PLUMBING FIXTURE FU CALCULATION					
FIXTURE	QUANTITY	WATER WFU		DRAINAGE FU	
		EACH	TOTAL	EACH	TOTAL
LAVATORY	2	1	2	1	2
KITCHEN SINK	3	2	6	2	6
HAND SINK	2	1	2	1	2
MOB SINK	1	1	1	1	1
WATER CLOSET	2	5	10	4	8
FLOOR DRAIN TO SAN	5		0	2	10



1 1/4" CW
From
Utility Connection

1" H&CW

WH-1

WHA-1

MS-1

1/2" H&CW

1"

3/4"

KS-3

1"

3/4"

WHA-1

HS-1

1/2" H&CW

KS-2

3/4"

WHA-1

KS-1

1"

3/4"

WHA-1

HB-1

1"

1/2"

WC-1

1"

WHA-1

LAV-1

1"

WHA-1

FIXTURE
TAG
MS-1
KS-1
KS-2
KS-3
LAV-1
WC-1
HB-1
HS-1

FIXTURE CONNECTION SIZE		
TAG	CW	HW
MS-1	1/2"	1/2"
KS-1	3/4"	3/4"
KS-2	3/4"	3/4"
KS-3	3/4"	3/4"
LAV-1	1/2"	1/2"
WC-1	1"	—
HB-1	3/4"	—
HS-1	1/2"	1/2"

KEY NOTES

- ① RANGE, 60", 10 OPEN BURNERS (32000 BTU/Hr)
- ② GAS FLOOR FRYER (34000 BTU/Hr)
- ③ CONVECTION OVEN, GAS (75000 BTU/Hr)

PROJECT #	FL0032	PROJECT BY	CECILIA DAVIS	DATE	PERSONAL ASSOCIATION
DATE	04/14/2019	PERSONS PERMITTED	190 SW DIXIE AVE SUITE 204 DADE COUNTY, FL 33105		
RECORD #		ADDRESS	3562 S.W. 301 ST DADE COUNTY, FL 33105		
REMARKS	MANJEET@GMAIL.COM				
<div style="display: flex; justify-content: space-between;"> <div> <p>MAMA JEANETTE'S RESTAURANT</p> <p>FOUNDATION PLAN</p> </div> <div> <p>CAROL CHADWICK</p> <p>DADE COUNTY PLANNING DEPARTMENT</p> <p>PLANNING & ZONING DIVISION</p> <p>1000 N. W. 10TH AVE., 10TH FLOOR</p> <p>MIAMI, FL 33136</p> <p>TEL: 305.375.2200</p> <p>FAX: 305.375.2201</p> <p>WWW.DADECOUNTYFLA.GOV</p> </div> </div>					

MAMA JEANNETTE'S RESTAURANT

SECTION 3, TOWNSHIP 17 SOUTH, RANGE 17 EAST
COLUMBIA COUNTY, FLORIDA



PROJECT ADDRESS:

2932 US HIGHWAY 44 I
LAKE CITY, FL 32055

OWNER:

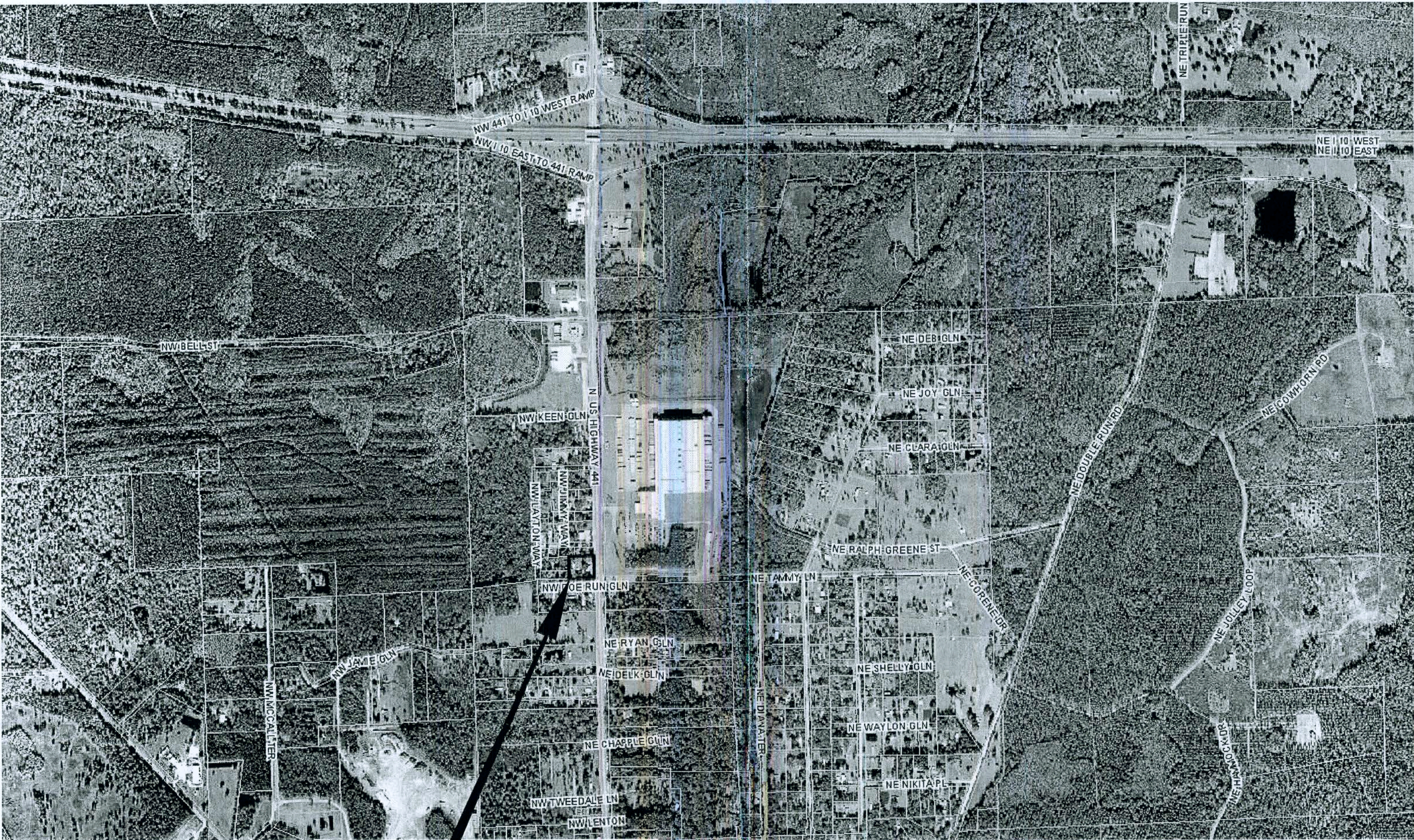
MS. CECILIA DAVIS
190 SW DEREK GLEN
LAKE CITY, FL 32024
386.234.9015
mamajeannettes@gmail.com

CIVIL ENGINEER:

CAROL CHADWICK, P.E.
1208 S.W. FARIFAX GLEN
LAKE CITY, FL 32025
307.680.1772
ccpewyo@gmail.com

SURVEYOR:

DONALD F. LEE & ASSOCIATES, INC.
140 N.W. RIDGEWOOD AVENUE
LAKE CITY, FL 32055
386.755.6166



PROJECT SITE

LOCATION MAP

NOT TO SCALE

ENGINEER'S NOTES

1. CONTRACTOR SHALL VERIFY ALL EXISTING CONDITIONS AND DIMENSIONS AT THE JOB SITE PRIOR TO CONSTRUCTION TO ENSURE THAT ALL WORK WILL FIT IN THE MANNER INTENDED ON THE PLANS. SHOULD ANY CONDITIONS EXIST THAT ARE CONTRARY TO THOSE SHOWN ON THE PLANS, THE CONTRACTOR SHALL NOTIFY THE ENGINEER OF SAID DIFFERENCES IMMEDIATELY AND PRIOR TO PROCEEDING WITH THE WORK.
2. ALL DISTURBED AREAS SHALL BE SEED WITH A MIXTURE OF LONG-TERM VEGETATION AND SHORT-TERM VEGETATION. THE LONG-TERM VEGETATION SHALL BE APPLIED AT A MINIMUM RATE OF 70 POUNDS PER ACRE. THE SHORT-TERM VEGETATION SHALL BE APPLIED AT A MINIMUM RATE OF 20 POUNDS PER ACRE AND SHALL CONSIST OF WINTER RYE FROM SEPTEMBER THROUGH MARCH OR MILLET FROM APRIL THROUGH AUGUST.
3. THE PERMITTED CONTRACTOR SHALL INSTITUTE NECESSARY MEASURES DURING CONSTRUCTION TO MINIMIZE EROSION, TURBIDITY, NUTRIENT LOADING, AND SEDIMENTATION TO ADJACENT LANDS AND IN THE RECEIVING WATER.
4. ALL GRADES MAY BE ADJUSTED IN THE FIELD A MAXIMUM OF SIX (6) INCHES AS LONG AS THE FLOW OF WATER IS NOT CHANGED.
5. WHERE DITCH MUST BE DEEPER THAN NORMAL TO ACCOMMODATE A PIPE, THE TRANSITION FROM NORMAL DITCH GRADE TO PIPE FLOW LINE SHALL BE A MINIMUM LENGTH OF 100 FEET.
6. THE CONTRACTOR SHALL ADHERE TO THE EROSION AND SEDIMENTATION CONTROL PLAN PRIOR TO THE COMMENCEMENT OF ANY CONSTRUCTION UNTIL THE AS-BUILTS ARE COMPLETED.
7. QUANTITIES ARE ESTIMATES ONLY. CONTRACTOR SHALL VERIFY QUANTITIES PRIOR TO BID AND CONSTRUCTION.
8. NO FILL SHALL BE PLACED ON EXISTING GROUND UNTIL THE GROUND HAS BEEN CLEARED OF WEEDS, DEBRIS, TOPSOIL AND OTHER DELETERIOUS MATERIAL.

UNAUTHORIZED CHANGES AND USES CAUTION:

THE ENGINEER PREPARING THESE PLANS WILL NOT BE RESPONSIBLE FOR, OR LIABLE FOR, UNAUTHORIZED CHANGES TO OR USES OF THESE PLANS. ALL CHANGES TO THE PLANS MUST BE IN WRITING AND MUST BE APPROVED BY THE PREPARER OF THESE PLANS. THE PRIVATE ENGINEER SIGNING THESE PLANS IS RESPONSIBLE FOR ASSURING THE ACCURACY AND ACCEPTABILITY OF THE DESIGN HEREON. IN THE EVENT OF DISCREPANCIES ARISING DURING CONSTRUCTION, THE PRIVATE ENGINEER SHALL BE RESPONSIBLE FOR DETERMINING AN ACCEPTABLE SOLUTION AND REVISIONS TO THE PLANS FOR APPROVAL BY THE GOVERNING AGENCIES.

PRIVATE ENGINEER'S NOTICE TO CONTRACTOR:

THE CONSTRUCTION CONTRACTOR AGREES THAT IN ACCORDANCE WITH GENERALLY ACCEPTED CONSTRUCTION PRACTICES, HEREIN WILL BE REQUIRED TO ASSUME SOLE AND COMPLETE RESPONSIBILITY FOR JOB SITE CONDITIONS DURING THE COURSE OF CONSTRUCTION OF THE PROJECT, INCLUDING THE SAFETY OF ALL PERSONS AND PROPERTY. THIS REQUIREMENT SHALL APPLY CONTINUOUSLY AND NOT BE LIMITED TO NORMAL WORKING HOURS. THE CONSTRUCTION CONTRACTOR FURTHER AGREES TO DEFEND, INDEMNIFY AND HOLD DESIGN PROFESSIONAL HARMLESS FROM ANY AND ALL LIABILITY, REAL OR ALLEGED, IN CONNECTION WITH THE PERFORMANCE OF WORK ON THIS PROJECT, EXCEPTING LIABILITY ARISING FROM THE SOLE NEGLIGENCE OF THE DESIGN PROFESSIONAL.

EROSION CONTROL NOTES

1. EROSION AND SEDIMENTATION CONTROL SHALL COMPLY WITH THE REQUIREMENTS OF THE "FLORIDA DEVELOPMENT MANUAL" AND THE "FLORIDA EROSION AND SEDIMENT CONTROL INSPECTOR'S MANUAL".
2. THE CONTRACTOR SHALL ADHERE TO THE FLORIDA DEPARTMENT OF TRANSPORTATION, SUWANNEE RIVER WATER MANAGEMENT DISTRICT, HAMILTON COUNTY AND OTHER GOVERNING AUTHORITIES FOR EROSION AND SEDIMENT CONTROL REGULATIONS.
3. THE CONTRACTOR SHALL ADJUST AND REVISE CONTROL MEASURES SHOWN ON THESE PLANS TO MEET ACTUAL FIELD CONDITIONS. ANY REVISIONS SHALL BE APPROVED BY THE REVIEWING AGENCIES.
4. EROSION AND SEDIMENT CONTROL MEASURES SHALL BE INSTALLED PRIOR TO ANY OTHER CONSTRUCTION.
5. EROSION AND SEDIMENT CONTROL MEASURES SHALL NOT BE REMOVED UNTIL ALL CONSTRUCTION IS COMPLETE AND UNTIL A PERMANENT GROUND COVER HAS BEEN ESTABLISHED.
6. ALL OPEN DRAINAGE SWALES SHALL BE GRASSED AND RIPRAP SHALL BE PLACED AS REQUIRED TO CONTROL EROSION.
7. SILT FENCES SHALL BE LOCATED ON SITE TO PREVENT SEDIMENT FROM LEAVING PROJECT LIMITS.
8. CONTRACTOR SHALL PLACE A DOUBLE ROW OF SILT FENCE IN AREAS WHERE RUNOFF FROM DISTURBED AREAS MAY ENTER WETLANDS.
9. DURING CONSTRUCTION AND AFTER CONSTRUCTION IS COMPLETE, ALL STRUCTURES SHALL BE CLEANER OF ALL DEBRIS AND EXCESS SEDIMENT.
10. ALL GRADED AREAS SHALL BE STABILIZED IMMEDIATELY WITH A TEMPORARY FAST-GROWING COVER AND/OR MULCH.
11. A PAD OF RUBBLE RIP RAP SHALL BE PLACED AT THE BOTTOM OF ALL COLLECTION FLUMES AND COLLECTION PIPE OUTLETS. GRANITE OR LIMESTONE RIPRAP IS REQUIRED, NO BROKEN CONCRETE WILL BE ACCEPTED.
12. ALL SLOPES STEEPER THAN 3:1 SHALL BE ADEQUATELY PROTECTED FROM EROSION THROUGH THE USE OF HAY BALES OR SODDING.
13. ALL STABILIZATION PRACTICES SHALL BE INITIATED AS SOON AS PRACTICABLE IN AREAS OF THE JOB WHERE CONSTRUCTION ACTIVITIES HAVE TEMPORARILY OR PERMANENTLY STOPPED, BUT IN NO CASE SHALL THE DISTURBED AREA BE LEFT UNPROTECTED FOR MORE THAN SEVEN DAYS.
14. ALL WASTE GENERATED ON THE PROJECT SHALL BE DISPOSED OF BY THE CONTRACTOR IN AREAS PROVIDED BY CONTRACTOR.
15. LOADED HAIL TRUCKS SHALL BE COVERED WITH TARPS.
16. EXCESS DIRT SHALL BE REMOVED DAILY.
17. THIS PROJECT SHALL COMPLY WITH ALL WATER QUALITY STANDARDS.
18. QUALIFIED PERSONNEL SHALL INSPECT THE AREA USED FOR STORAGE OF STOCKPILES, THE SILT FENCE AND STRAW BALES, THE LOCATION WHERE VEHICLES ENTER OR EXIT THE SITE, AND THE DISTURBED AREAS THAT HAVE NOT BEEN FINALLY STABILIZED, AT LEAST ONCE EVERY SEVEN CALENDAR DAYS AND WITHIN 24 HOURS OF THE END OF A STORM OF 0.25 INCHES OR GREATER.
19. SITES THAT HAVE BEEN FINALLY STABILIZED WITH SOD OR GRASSING SHALL BE INSPECTED AT LEAST ONCE EVERY WEEK.

NOTE: ALL UTILITY PROVIDERS MUST BE CONTACTED PRIOR TO DIGGING IN ACCORDANCE TO CHAPTER 556 "SUNSHINE STATE ONE CALL" CALL 811 48 HOURS PRIOR TO DIGGING

CAROL CHADWICK, P.E.

1208 S.W. Farifax Glen
Lake City, FL 32025

307.680.1772 ccpewyo@gmail.com

APPLICANT/OWNER

CECILIA S. DAVIS
190 SW DEREK GLN
LAKE CITY, FL 32024

PROJECT:

MAMA JEANNETTE'S RESTAURANT
2932 N U.S. HIGHWAY 441
LAKE CITY, FLORIDA 32055

TITLE:

COVER SHEET

ENGINEER OF RECORD: CAROL CHADWICK, P.E.
P.E. NO.: 82850



PROJECT NO.

FL18032

DWG. NO.

1.0

TOPOGRAPHY &
BOUNDARY SURVEY
IN SECTION 17, TOWNSHIP 3 SOUTH, RANGE 17 EAST
COLUMBIA COUNTY, FLORIDA



DESCRIPTION:

O.R.B. 1325, PAGES 903-905
COMMENCE at the Southeast corner of the Southwest 1/4 of the Northwest 1/4, Section 17, Township 3 South, Range 17 East, and run thence South 89°47' West along the South line of said Southwest 1/4 of the Northwest 1/4, 66.6 feet to the West right-of-way line of U.S. Highway No. 441, thence run North 0°13' West along said West right-of-way line, 370 feet for a POINT OF BEGINNING; thence run South 89°47' West on a perpendicular to said West right-of-way line, 256.0 feet, thence run North 0°13' West parallel to said West right-of-way line, 215 feet, thence run North 89°47' East on a perpendicular, 256.0 feet to said West right-of-way line of U.S. Highway No. 441, thence run South 0°13' East along said West right-of-way line, 215 feet to the POINT OF BEGINNING. Said lands lying in the East 1/2 of the Southwest 1/4 of the Northwest 1/4, Section 17, Township 3 South, Range 17 East, Columbia County, Florida.

NOTES:

- 1.) Monumentation is as shown and designated on the face of the plat.
- 2.) Boundary based on monumentation found in place, description furnished by client, and prior survey by W.C. Hale, PLS.
- 3.) Bearings projected from State Plane Coordinates and based on Florida Department of Transportation control points on U.S. Highway 441.
- 4.) Improvements were located by field ties.
- 5.) Underground encroachments, if present, were not located with this survey.
- 6.) This survey was made without benefit of a title search. There may be additional easements, restrictions, etc. not shown hereon but found in the Public Records. Issues regarding title, land use & zoning, easements & other encumbrances are not a part of the scope of a Boundary Survey and can only be revealed with a title search.
- 7.) Date of field survey completion: January 9, 2018.
- 8.) Examination of the Flood Insurance Rate Maps (FIRM) for Columbia County shows that, per said maps, the described parcel lies within Flood Zone "X", which according to said maps is outside of the 0.2% chance floodplain (ref: Map No. 12023C0285C).
- 9.) Elevations based on NAVD88 datum, per Florida Department of Transportation Benchmarks.

LEGEND	
CMF=CONCRETE MONUMENT FOUND	OJLE=OVERHEAD ELECTRIC LINE
IPR=IRON PIPE FOUND	SEC=SECTION
IPS=IRON PIPE SET	RGE=RANGE
PLS=PROFESSIONAL LAND SURVEYOR	TWP=TOWNSHIP
R/W=RIGHT-OF-WAY	COR=CORNER
CL=CENTER LINE	NE=NORTHEAST
PP=POWER POLE	NW=NORTHWEST
SP=SERVICE POLE	SE=SOUTHEAST
TP=TELEPHONE PEDESTAL	SW=SWITHWEST
IR=IRON REBAR & CAP	SE=SOUTHEAST
NO ID=NO IDENTIFICATION	LB=LICENSED BUSINESS
SSS=SINGLE SUPPORT SIGN	P.O.B.=POINT OF BEGINNING
CMF=CONCRETE METAL PIPE	(F)=FIELD MEASUREMENTS
INV=INVERT	(D)=DEED MEASUREMENTS
BSL=BAILEY, BISHOP & LANE	FD=FOUND
PPF=POWER POLE W/ TRANSFORMER	FDT=FLORIDA DEPARTMENT OF TRANSPORTATION
CNC=CONCRETE	RC=ROUND CONCRETE PIPE
	ME=METER, ELECTRIC

CAD FILE: 7039.DWG

NOT VALID WITHOUT THE SIGNATURE
AND ORIGINAL RAISED SEAL OF A
FLORIDA REGISTERED PROFESSIONAL
SURVEYOR AND MAPPER

Timothy A. Delbene, P.S.M.
Florida Reg. No. 5594
DATE: ____/____/2018



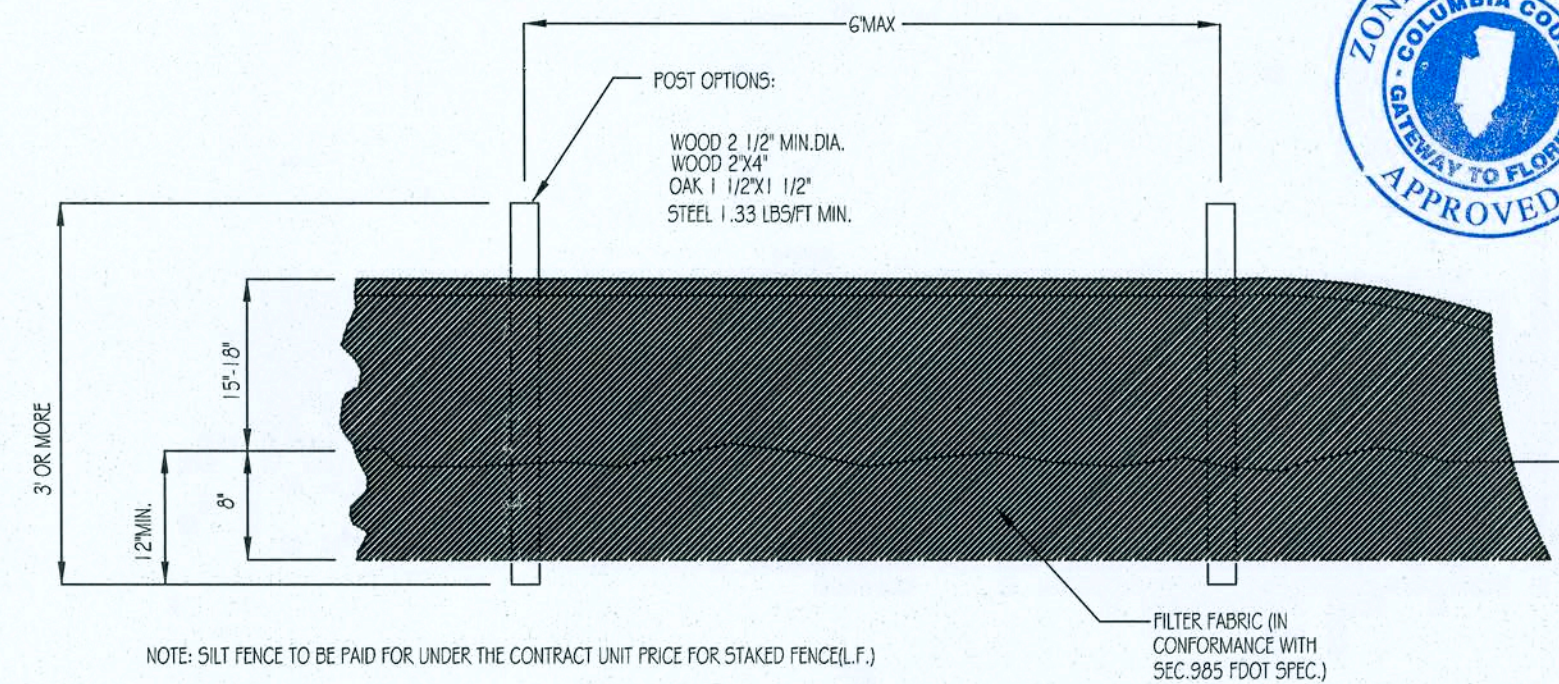
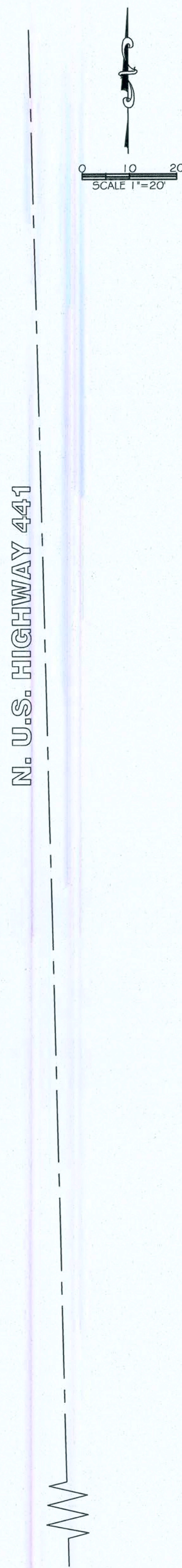
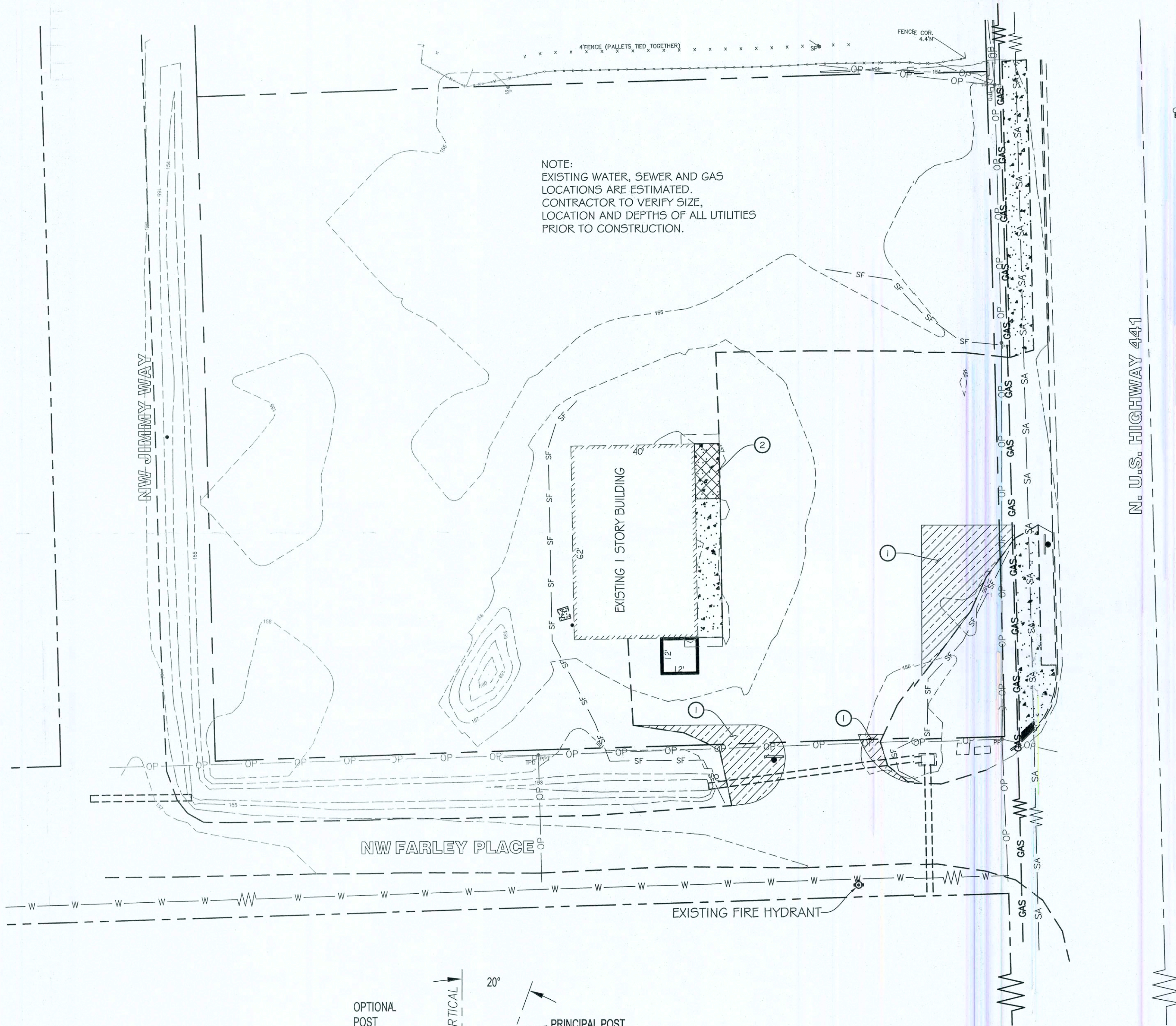
Donald F. Lee and Associates, Inc.

SURVEYORS - ENGINEERS
140 Northwest Ridgewood Avenue, Lake City, Florida 32055
Phone: (386) 755-6166 FAX: (386) 755-6167
Certificate of Authorization # LB 7042

Date: DATE
Drafting: DRAFT
Computations: COMP
Checked: CHECK

NUJAK COMPANIES

Scale: SCALE
Field Book: FIELD
Work Order: WORK
File: FILE



ELEVATION
EROSION AND SEDIMENT CONTROL PER FDOT INDEX 1.02
NOT TO SCALE

EROSION CONTROL NOTES

1. EROSION AND SEDIMENTATION CONTROL SHALL COMPLY WITH THE REQUIREMENTS OF THE "FLORIDA DEVELOPMENT MANUAL" AND THE "FLORIDA EROSION AND SEDIMENT CONTROL INSPECTOR'S MANUAL".
2. THE CONTRACTOR SHALL ADHERE TO THE FLORIDA DEPARTMENT OF TRANSPORTATION, SUWANNEE RIVER WATER MANAGEMENT DISTRICT, COLUMBIA COUNTY AND OTHER GOVERNING AUTHORITIES FOR EROSION AND SEDIMENT CONTROL REGULATIONS.
3. THE CONTRACTOR SHALL ADJUST AND REVISE CONTROL MEASURES SHOWN ON THESE PLANS TO MEET ACTUAL FIELD CONDITIONS. ANY REVISIONS SHALL BE APPROVED BY THE REVIEWING AGENCIES.
4. EROSION AND SEDIMENT CONTROL MEASURES SHALL BE INSTALLED PRIOR TO ANY OTHER CONSTRUCTION.
5. EROSION AND SEDIMENT CONTROL MEASURES SHALL NOT BE REMOVED UNTIL ALL CONSTRUCTION IS COMPLETE AND UNTIL A PERMANENT GROUND COVER HAS BEEN ESTABLISHED.
6. ALL OPEN DRAINAGE SWALES SHALL BE GRASSED AND RIPRAP SHALL BE PLACED AS REQUIRED TO CONTROL EROSION.
7. SILT FENCES SHALL BE LOCATED ON SITE TO PREVENT SEDIMENT FROM LEAVING PROJECT LIMITS.
8. CONTRACTOR SHALL PLACE A DOUBLE ROW OF SILT FENCE IN AREAS WHERE RUNOFF FROM DISTURBED AREAS MAY ENTER WETLANDS.
9. DURING CONSTRUCTION AND AFTER CONSTRUCTION IS COMPLETE, ALL STRUCTURES SHALL BE CLEANED OF ALL DEBRIS AND EXCESS SEDIMENT.
10. ALL GRADED AREAS SHALL BE STABILIZED IMMEDIATELY WITH A TEMPORARY FAST-GROWING COVER AND/OR MULCH.
11. A PAD OF RUBBLE RIP RAP SHALL BE PLACED AT THE BOTTOM OF ALL COLLECTION FLUMES AND COLLECTION PIPE OUTLETS. GRANITE OR LIMESTONE RIPRAP IS REQUIRED, NO BROKEN CONCRETE WILL BE ACCEPTED.
12. ALL SIDE SLOPES STEEPER THAN 3:1 SHALL BE ADEQUATELY PROTECTED FROM EROSION THROUGH THE USE OF HAY BALES OR SODDING.
13. ALL STABILIZATION PRACTICES SHALL BE INITIATED AS SOON AS PRACTICABLE IN AREAS OF THE JOB WHERE CONSTRUCTION ACTIVITIES HAVE TEMPORARILY OR PERMANENTLY STOPPED, BUT IN NO CASE SHALL THE DISTURBED AREA BE LEFT UNPROTECTED FOR MORE THAN SEVEN DAYS.
14. ALL WASTE GENERATED ON THE PROJECT SHALL BE DISPOSED OF BY THE CONTRACTOR IN AREAS PROVIDED BY CONTRACTOR.
15. LOADED HAUL TRUCKS SHALL BE COVERED WITH TARP.
16. EXCESS DIRT SHALL BE REMOVED DAILY.
17. THIS PROJECT SHALL COMPLY WITH ALL WATER QUALITY STANDARDS.
18. QUALIFIED PERSONNEL SHALL INSPECT THE AREA USED FOR STORAGE OF STOCKPILES, THE SILT FENCE AND STRAW BALES, THE LOCATION WHERE VEHICLES ENTER OR EXIT THE SITE, AND THE DISTURBED AREAS THAT HAVE NOT BEEN FINALLY STABILIZED, AT LEAST ONCE EVERY SEVEN CALENDAR DAYS AND WITHIN 24 HOURS OF THE END OF A STORM OF 0.25 INCHES OR GREATER.
19. SITES THAT HAVE BEEN FINALLY STABILIZED WITH SOD OR GRASSING SHALL BE INSPECTED AT LEAST ONCE EVERY WEEK.

INLET PROTECTION SYSTEM

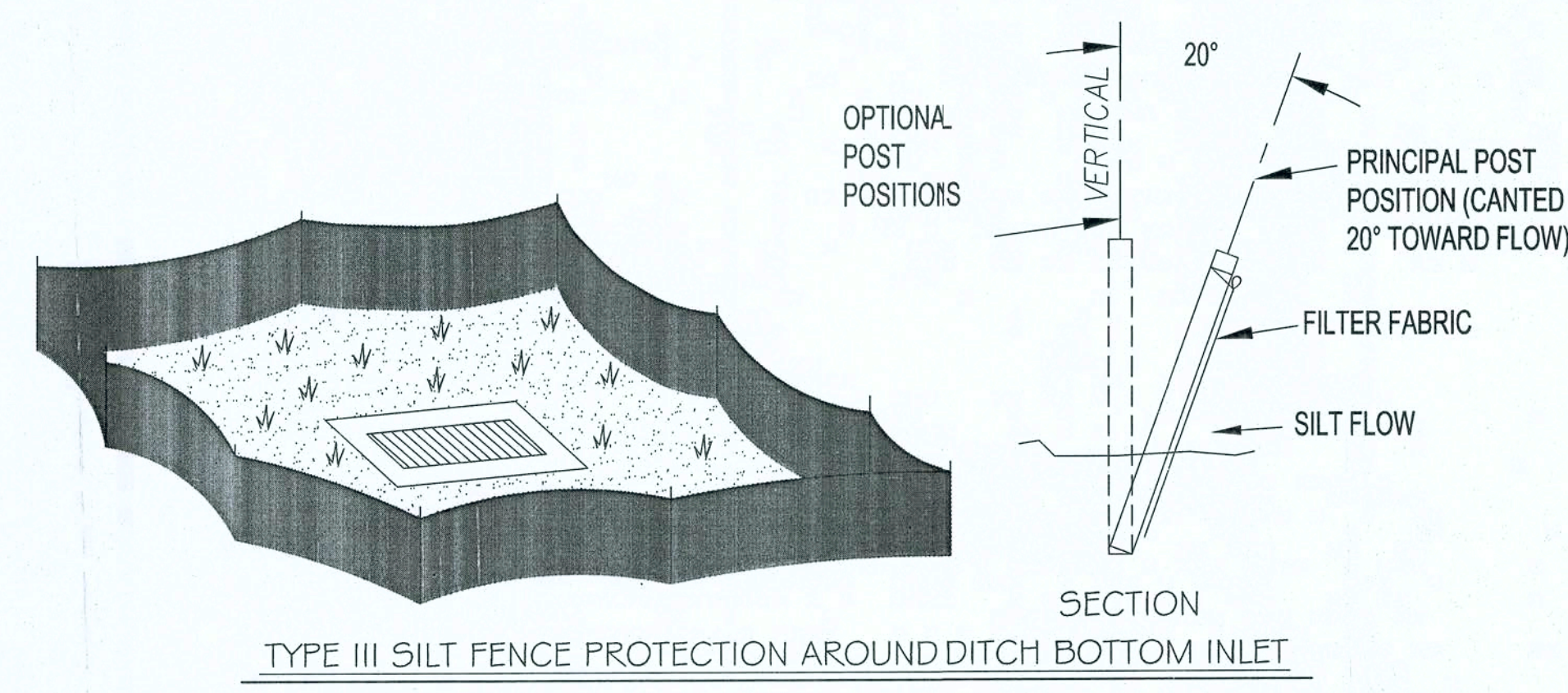
PURPOSE: TO USE ONE OF ANY NUMBER OF SEDIMENT BARRIERS THAT EITHER PREVENT SEDIMENTS FROM ENTERING THE INLET STRUCTURE OR TRAP THE SEDIMENTS ONCE INSIDE THE INLET STRUCTURE.

LEGEND

- REMOVE CONCRETE
- REMOVE PAVEMENT
- PROPERTY LINE
- PROPERTY LINE
- EXISTING PAVEMENT

CONSTRUCTION NOTES AND ESTIMATED QUANTITIES

- 1 REMOVE EXISTING PAVEMENT 1404 S.F.
- 2 REMOVE EXISTING CONCRETE 140 S.F.



TYPE III SILT FENCE PROTECTION AROUND DITCH BOTTOM INLET

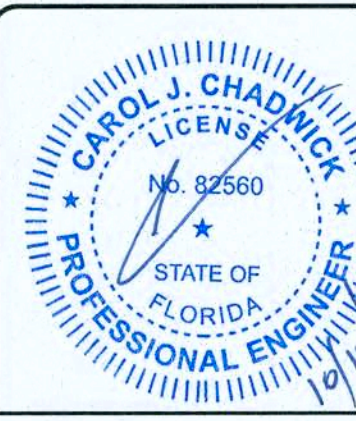
REV	DATE	DESCRIPTION	BY

CAROL CHADWICK, P.E.
Civil Engineer
1208 SW Fairfax Glen
Lake City, FL 32025
307.680.1772 ccpcwyo@gmail.com

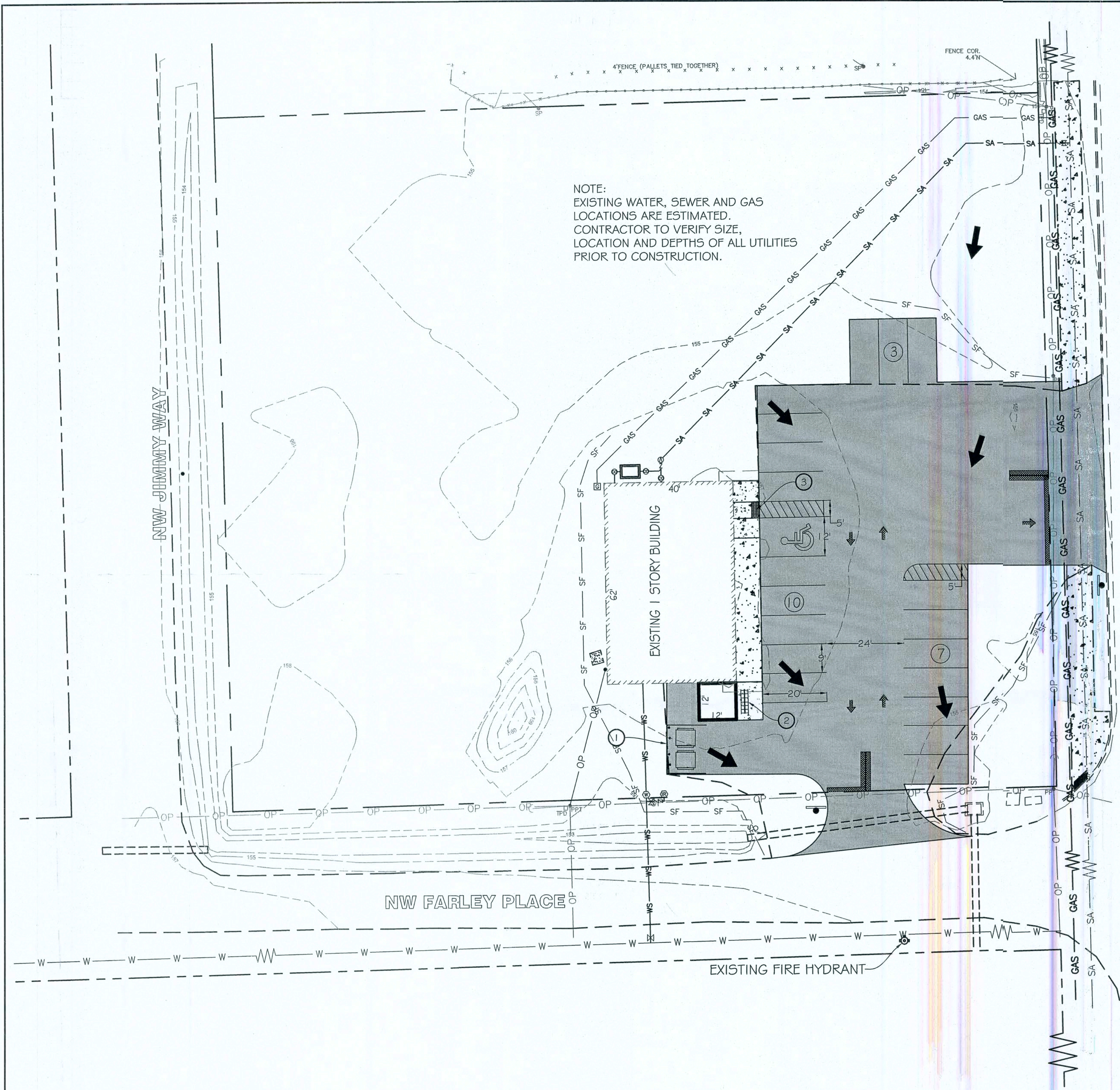
APPLICANT/OWNER
CECILIA S. DAVIS
190 SW DEREK GLN
LAKE CITY, FL 32024

PROJECT:
MAMA JEANNETTE'S RESTAURANT
2932 N. U.S. HIGHWAY 441
LAKE CITY, FLORIDA 32055

TITLE:
DEMOLITION &
SWPP PLAN

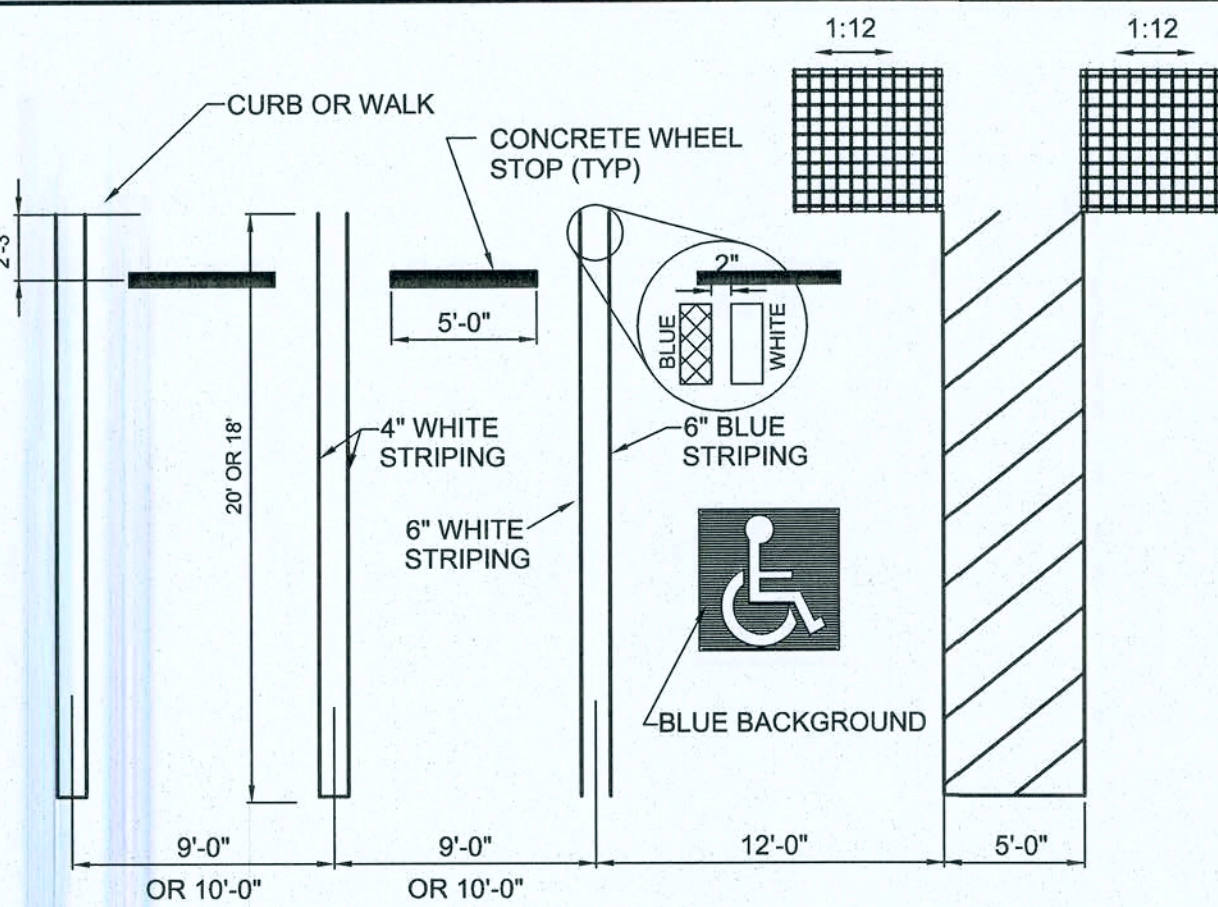


PROJECT NO.
FL18032
DWG. NO.
3.0



NOTE:
EXISTING WATER, SEWER AND GAS
LOCATIONS ARE ESTIMATED.
CONTRACTOR TO VERIFY SIZE,
LOCATION AND DEPTHS OF ALL UTILITIES
PRIOR TO CONSTRUCTION.

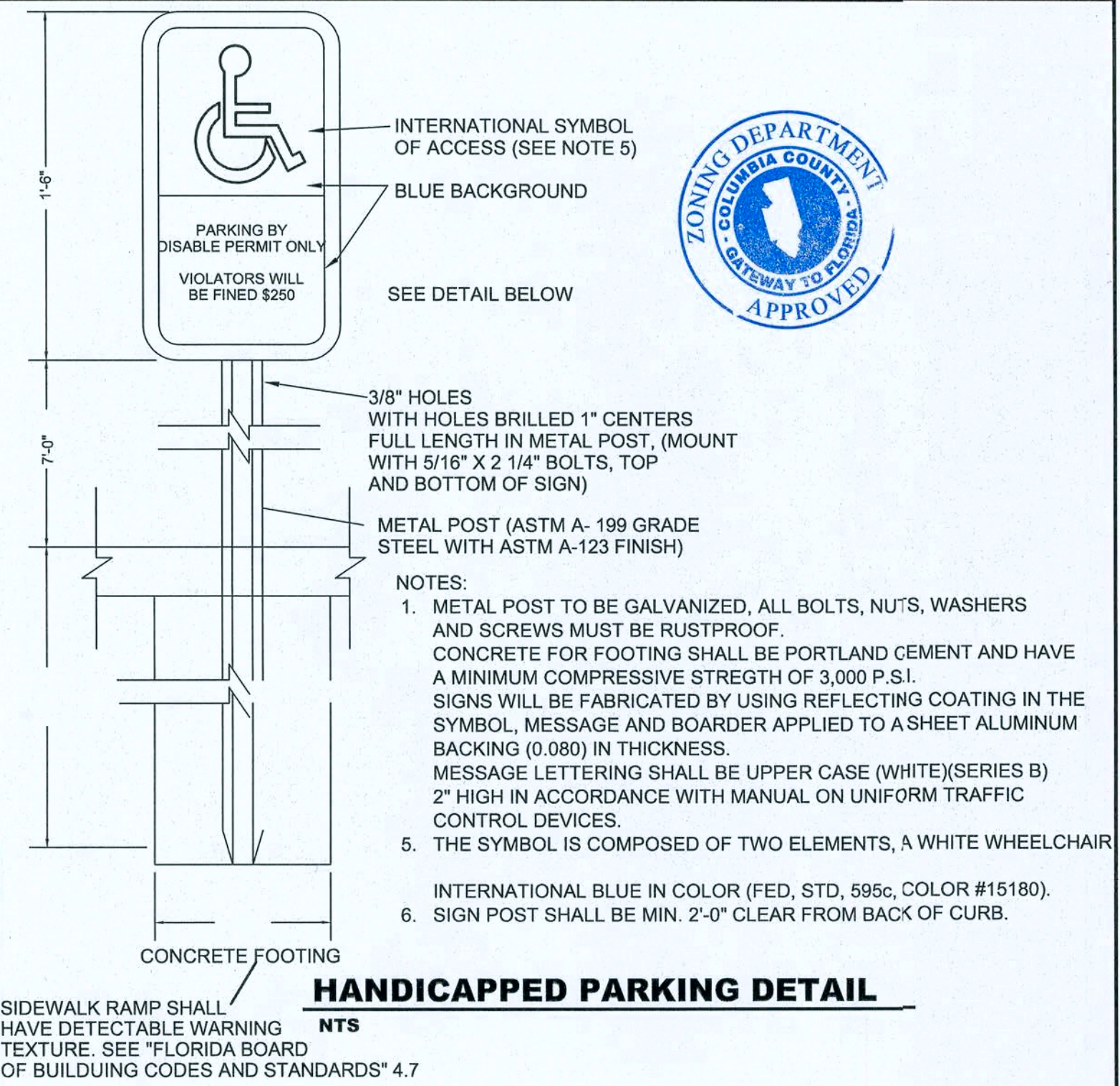
N. U.S. HIGHWAY 441



TYPICAL PARKING DETAIL

CONSTRUCTION NOTES AND ESTIMATED QUANTITIES

- 1. CONSTRUCT DUMPSTER ENCLOSURE 1 EA.
- 2. INSTALL BAKE RACK 1 EA.
- 3. CONSTRUCT ADA COMPLIANT HANDICAP ACCESS ROAD 1 EA.



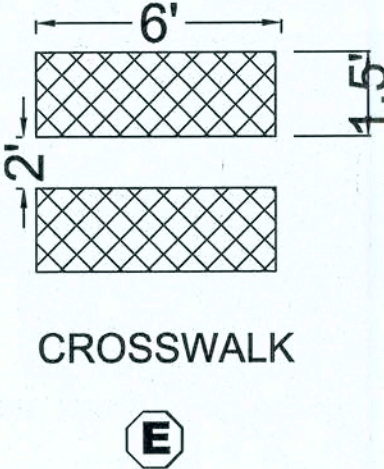
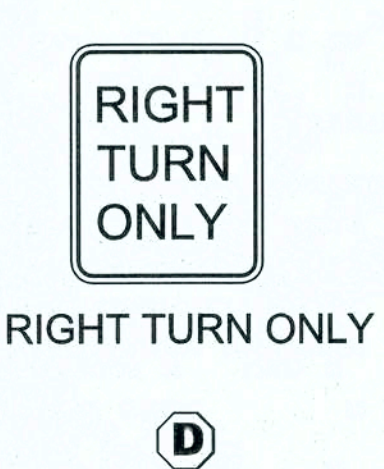
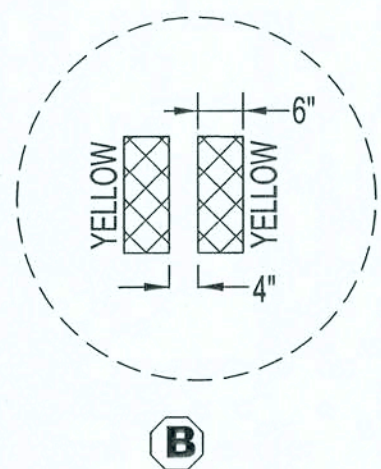
HANDICAPPED PARKING DETAIL

LEGEND

- PROPOSED BACK WATER VALVE
- PROPOSED GRIND PUMP
- PROPOSED GREASE TRAP
- PROPOSED CLEANOUT
- PROPOSED GAS METER
- PROPOSED WATER VALVE
- PROPOSED IRRIGATION METER
- PROPOSED WATER METER
- PROPOSED WATER SERVICE
- PROPOSED SEWER SERVICE
- PROPOSED GAS SERVICE
- PROPOSED ELECTRIC SERVICE
- PROPERTY LINE
- SHEET FLOW
- TRAFFIC FLOW
- EXISTING PAVEMENT
- NEW MODIFIED PAVEMENT

DEVELOPMENT INFORMATION			
PARCEL NUMBER	17-35-17-05000-003		
ZONING	CG - COMMERCIAL GENERAL		
LAND USE	RESTAURANT		
ADDRESS	2932 US HIGHWAY 441, LAKE CITY, FL 32055		
PROPERTY AREA	SQUARE FEET	ACRES	% OF SITE
PARCEL AREA	55040	1.26	100
ON-SITE DISTURBANCE AREA	24560	0.56	44.62
OFF-SITE DISTURBANCE AREA	3311	0.08	-
TOTAL DISTURBANCE AREA	27871	0.64	-
EXISTING IMPERVIOUS AREA			
ASHPALT PAVEMENT	11027	0.25	20.03
CONCRETE	496	0.01	0.90
BUILDING (EXCULDING CANOPY)	2400	0.06	4.36
TOTAL EXISTING IMPERVIOUS	13923	0.32	25.30
PROPOSED IMPERVIOUS AREA			
EXISTING PAVEMENT OVERLAY	9984	0.23	18.14
NEW PAVEMENT	540	0.01	0.98
EXISTING CONCRETE TO REMAIN	355	0.01	0.64
NEW CONCRETE	252	0.01	0.46
TOTAL BUILDING	2544	0.06	4.62
TOTAL IMPERVIOUS AREA	13675	0.31	24.85
LANDSCAPING			
REQUIRED	PER SECTION 4.2.17.10, COLUMBIA COUNTY L.D.R. 10% OF OFF-STREET PARKING AREA ONE TREE FOR EVERY 200 S.F. REQUIRED LANDSCAPE AREA 9984 S.F. + 540 S.F. = 10524 S.F. * 10% = 1052 S.F. 1052 S.F./200 S.F. = 5.26 TREES --> 6 TREES		
PROPOSED AREA	2256 S.F. + 6 TREES		
PARKING			
REQUIRED SPACES	PER SECTION 4.13.11, COLUMBIA COUNTY L.D.R. ONE SPACE PER 3 SEATS 60 SEATS / 3 = 20 SPACES		
PROPOSED SPACES	20 SPACES INCLUDING 1 HANDICAP SPACE		

SIGNS & STRIPING SPECIFICATIONS



REV	DATE	DESCRIPTION	BY	REV	DATE	DESCRIPTION	BY

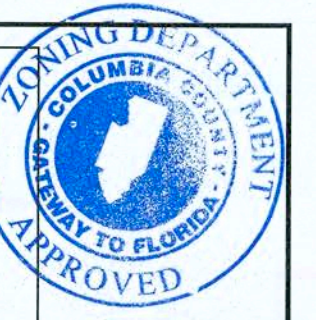
CAROL CHADWICK, P.E.
Civil Engineer
1208 S.W. Fairfax Glen
Lake City, FL 32025
307680.1772 ccpewyo@gmail.com

APPLICANT/OWNER
CECILIA S. DAVIS
190 SW DEREK GLN
LAKE CITY, FL 32024.

PROJECT:
MAMA JEANNETTE'S RESTAURANT
2932 N U.S. HIGHWAY 441
LAKE CITY, FLORIDA 32055

TITLE:
SITE PLAN

PROJECT NO.
FL18032
DWG. NO.
4.0



DRAINAGE NARRATIVE

THE BUILDING STRUCTURE AND ALL OF THE ASSOCIATED PAVED PARKING WERE BUILT IN 1977. AND, SINCE THERE IS NO ADDITIONAL IMPERVIOUS AREA TO BE CONSTRUCTED, THE SURFACE WATER RUNOFF IS EXEMPT FROM TREATMENT.

THE VEHICLE USE AREA SLIGHTLY SLOPES TO THE SOUTHEAST INTO THE UNPAVED AREA AT THE SOUTHEAST CORNER OF THE PROPERTY. THERE IS NO REPORT OF FLOODING DURING HEAVY RAINFALL.

CONSTRUCTION NOTES AND ESTIMATED QUANTITIES

- | | | |
|----|--|----------|
| 1 | CITY TO CONNECT TO EXISTING FORCE MAIN WITH WYE, VALVE & BACK WATER VALVE | 1 EA. |
| 2 | INSTALL 2" FORCE SEWER SERVICE | 163 L.F. |
| 3 | INSTALL GRINDER PUMP - SPECIFICATIONS BY INSTALLER | 1 EA. |
| 4 | INSTALL GREASE TRAP WITH 2 CLEAN-OUTS | 1 EA. |
| 6 | INSTALL BACK WATER VALVE | 1 EA. |
| 7 | INSTALL SEWER CLEAN-OUT | 1 EA. |
| 8 | INSTALL 4" WYE | 1 EA. |
| 9 | INSTALL 2" 45° BEND | 1 EA. |
| 10 | CONNECT TO EXISTING GAS MAIN BY OTHERS | 1 EA. |
| 11 | INSTALL 2" GAS SERVICE LINE | 190 L.F. |
| 12 | GAS METER BY OTHERS | 1 EA. |
| 20 | ELECTRIC SERVICE BY OTHERS | 1 EA. |
| 30 | CITY TO CONNECT TO EXISTING WATER MAIN AND INSTALL WATER SERVICE UNDER EXISTING ROAD | 1 EA. |
| 31 | INSTALL 2" WATER LINE w/ backflow preventor | 1 EA. |
| 32 | 2" TEE | 1 EA. |
| 33 | INSTALL VALVE, DOUBLE BACK FLOW PREVENTOR AND IRRIGATION METER | 1 EA. |
| 34 | WATER METER BY CITY | 1 EA. |
| 35 | INSTALL 1" WATER SERVICE | 1 EA. |

LEGEND

- | | |
|---------------|---------------------------|
| z | PROPOSED BACK WATER VALVE |
| ⊗ | PROPOSED GRIND PUMP |
| ⊗ | PROPOSED GREASE TRAP |
| ⊗ | PROPOSED CLEANOUT |
| ⊗ | PROPOSED GAS METER |
| ⊗ | PROPOSED WATER VALVE |
| ⊗ | PROPOSED IRRIGATION METER |
| ⊗ | PROPOSED WATER METER |
| —WS—WS—WS—WS— | PROPOSED WATER SERVICE |
| —SA—SA—SA—SA— | PROPOSED SEWER SERVICE |
| —GAS—GAS—GAS— | PROPOSED GAS SERVICE |
| —OP—OP—OP— | PROPOSED ELECTRIC SERVICE |
| --- | PROPERTY LINE |
| → | SHEET FLOW |
| ⊗ | TRAFFIC FLOW |
| --- | EXISTING PAVEMENT |
| --- | NEW MODIFIED PAVEMENT |

GAS UTILITY NOTES

- CALL UTILITY LOCATES VIA "SUNSHINE ONE CALL OF FLORIDA" TO ENSURE NO CONFLICTS 48 HOURS PRIOR TO THE COMMENCEMENT OF ANY WORK.
- CITY OF LAKE CITY TO REMOVE AND REPLACE SIDEWALK WITH FDOT APPROVAL.
- WELD A TAPPING TEE AND INSTALL SERVICE LINE. FOLLOWING A SUCCESSFUL PRESSURE TEST, A HOT TAP WILL BE MADE.
- GAS DEPARTMENT WILL PROVIDE AND INSTALL THE APPROPRIATE REGULATOR AND NATURAL GAS METER FOR BILLING AND MEASUREMENT PURPOSES.
- UPON OWNER'S PLUMBER COMPLETING THE DOWNSTREAM OR OWNER PIPING, THE GAS DEPARTMENT WILL PERFORM A PRESSURE TEST ON ALL PLUMBING.
- ALL APPROPRIATE TICKETS WILL BE GENERATED BY CUSTOMER SERVICE. A TIME WILL BE SET FOR THE GAS DEPARTMENT TO COMPLETE AN INITIAL READ TICKET.

WATER UTILITY NOTES

- CALL UTILITY LOCATES VIA "SUNSHINE ONE CALL OF FLORIDA" TO ENSURE NO CONFLICTS 48 HOURS PRIOR TO THE COMMENCEMENT OF ANY WORK.
- THUMP OR DRILL UNDER NW FARLEY PLACE WITH A 2" POTABLE WATER LINE.
- CITY WILL INSTALL THE PROPER SIZED METER AND METER BOX. THE OWNER IS RESPONSIBLE FOR ALL DOWNSTREAM PIPING.
- BUILDING WILL NOT BE SPRINKLED.

NOTE:
EXISTING WATER, SEWER AND GAS
LOCATIONS ARE ESTIMATED.
CONTRACTOR TO VERIFY SIZE,
LOCATION AND DEPTHS OF ALL UTILITIES
PRIOR TO CONSTRUCTION.

SEWER UTILITY NOTES

- CALL UTILITY LOCATES VIA "SUNSHINE ONE CALL OF FLORIDA" TO ENSURE NO CONFLICTS 48 HOURS PRIOR TO THE COMMENCEMENT OF ANY WORK.
- CITY OF LAKE CITY TO REMOVE AND REPLACE SIDEWALK WITH FDOT APPROVAL.
- CITY WILL MAKE A TAP ON THE EXISTING FORCE MAIN.
- PROPOSED SEWER SERVICE FORCE MAIN WILL BE 2".
- OWNER TO PROVIDE A GRINDER PUMP.
- SEWER FORCE MAIN HEAD CONDITIONS ARE PUSHING AGAINST 75 FEET OF HEAD OR 35 PSI.

CAROL CHADWICK, P.E.

Civil Engineer
1208 S.W. Fairfax Glen
Lake City, FL 32025

307.680.1772 ccpcwgo@gmail.com

APPLICANT/OWNER

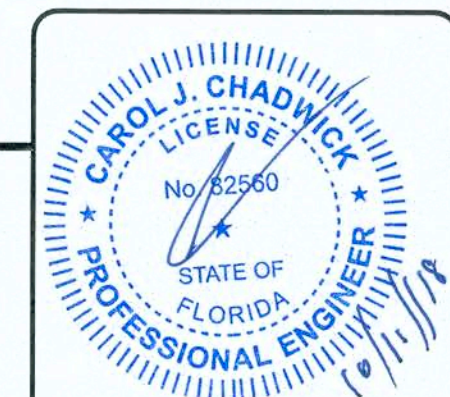
CECILIA S. DAVIS
190 SW DEREK GLN
LAKE CITY, FL 32024

PROJECT:

MAMA JEANNETTE'S RESTAURANT
2932 N U.S. HIGHWAY 441
LAKE CITY, FLORIDA 32055

TITLE:

UTILITY & DRAINAGE
PLAN

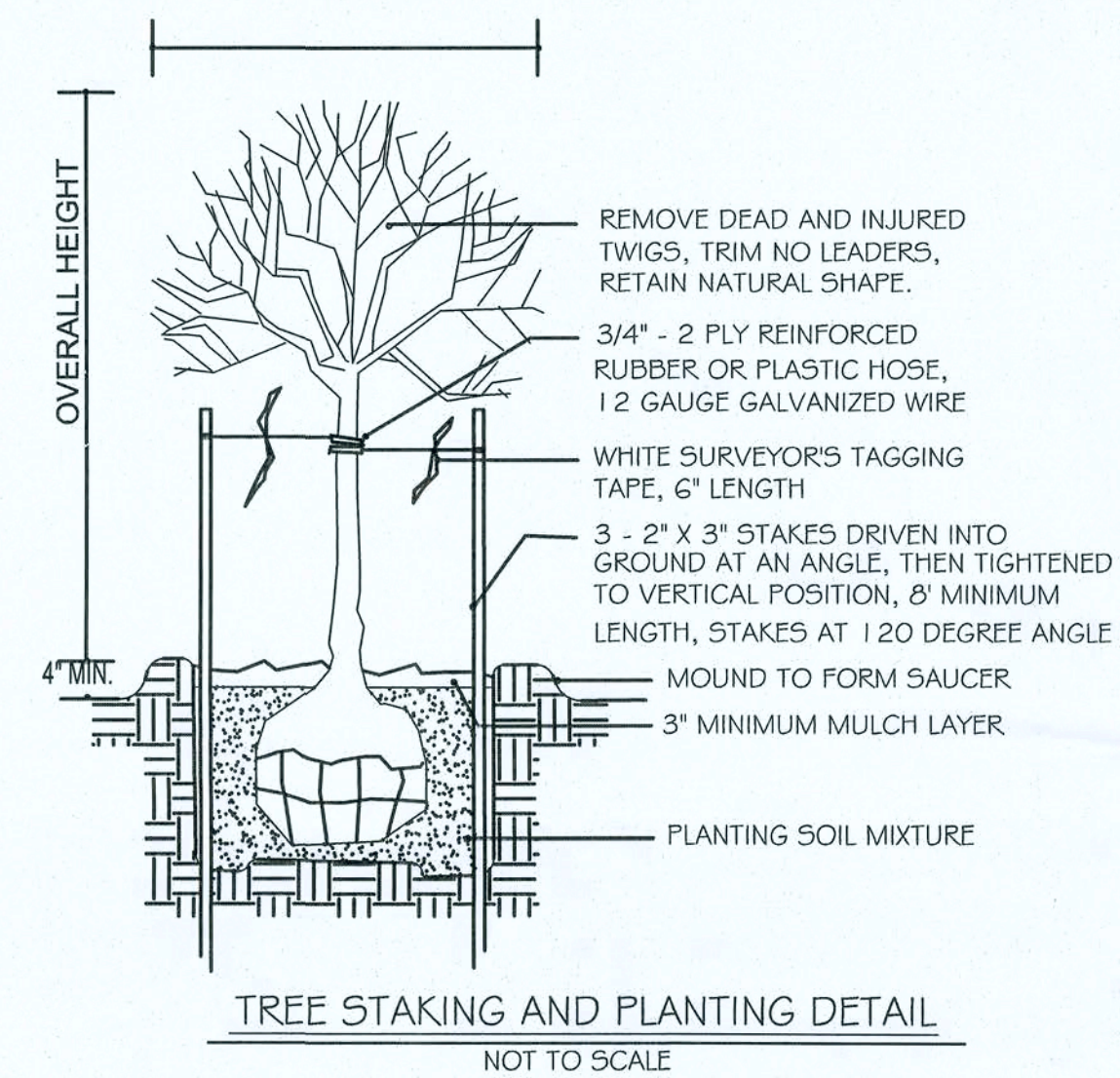


PROJECT NO.

FL18032

DWG. NO.

5.0



3.0