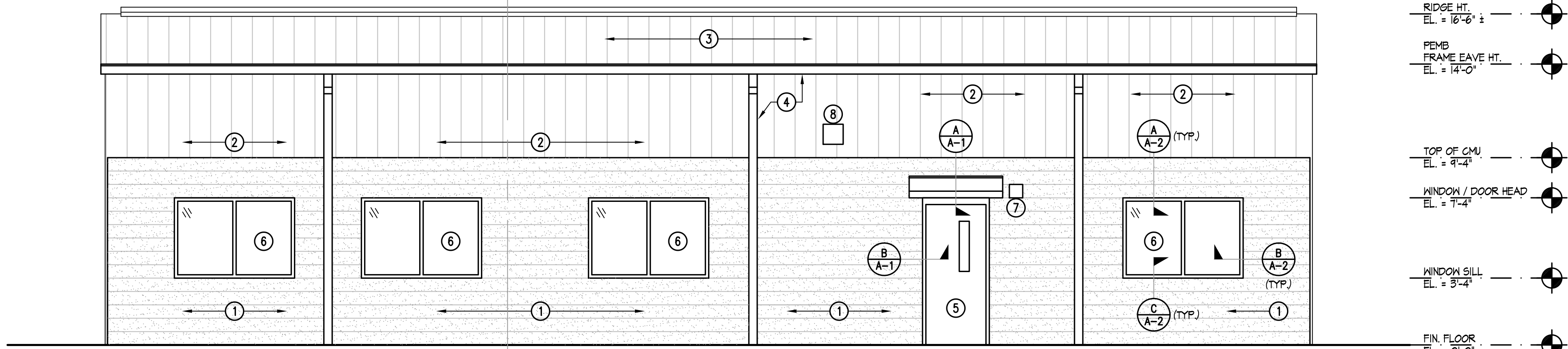


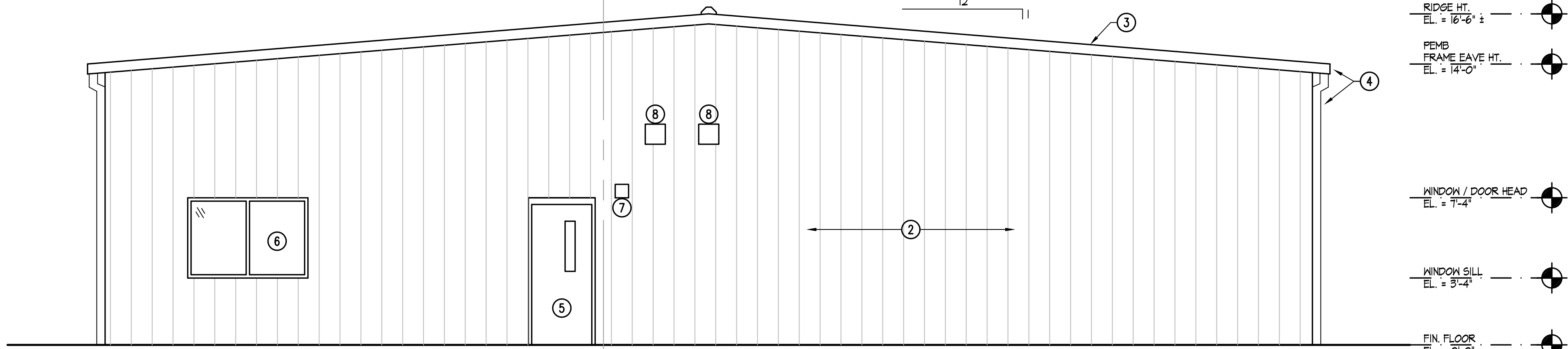
NORTH ELEVATION

1/4" = 1'-0"



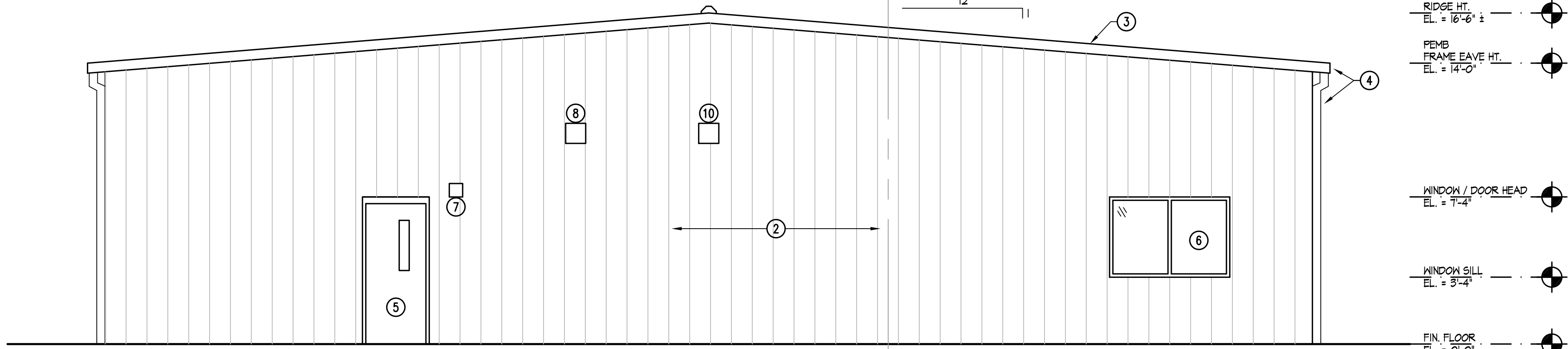
SOUTH ELEVATION

1/4" = 1'-0"



EAST ELEVATION

1/4" = 1'-0"



WEST ELEVATION

1/4" = 1'-0"

NOTE:
ALL LIGHTS, LOUVERS, ETC. NEED
TO BE LOCATED BETWEEN RIBS
OF PANELS WHENEVER POSSIBLE.

NOTE:
GRIND SPLIT-FACE CMU
SMOOTH OR PROVIDE REGULAR
CMU AT DOOR HOODS AND
LIGHT FIXTURES FOR FLASH'G.

ELEVATION NOTES

- 1 SPLIT-FACE 8" CMU WALL W/ FOAM INSUL. IN ALL CELLS NOT FILLED W/ CONC. - SEE STRUCT. DOCUMENTS FOR CMU REINF.
- 2 PRE-ENGINEERED MTL. BLD'G. MTL. WALL PANEL'G.
- 3 PRE-ENGINEERED MTL. BLD'G. ROOF WALL PANEL'G.
- 4 PRE-ENGINEERED MTL. BLD'G. MTL. GUTTER AND ASSOCIATED DOWNSPOUTS - COORD. W/ CIVIL DOCUMENTS FOR UNDERGROUND TIE-IN
- 5 DOOR, FRAME AND DOOR HARDWARE AS SCHED.
- 6 EXTERIOR ALUM.-FRAMED STOREFRONT FRAM'G. AND GLAZ'G. SYS.
- 7 EXTERIOR LIGHT FIXTURE - SEE ELEG.
- 8 EXT. WALL CAP - SEE MECH.
- 9 HVAC LOUVER - SEE MECH.
- 10 KITCHEN HOOD EXT. WALL CAP - SEE MECH.
- 11 COORD. W/ CIVIL, STRUCTURAL AND MEP DOCUMENTS FOR ADDITIONAL SCOPE OF WORK - TYP. NOTE THROUGHOUT

#	Date	Note
Revisions		