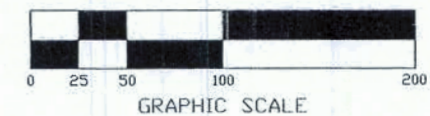


PLAT BOOK 9
PAGES 155
SHEET 2 OF 2

NO.	RAIUS	DELTA	ARC	TANGENT	CHORD	CHORD BEARING
1	2.00'	90°00'00"	39.27'	25.00'	35.36'	S.81°04'45"E.
2	2.00'	90°00'00"	39.27'	25.00'	35.36'	S.08°55'15"W.
3	2.00'	31°57'45"	111.57'	57.28'	110.13'	S.69°54'08"W.
4	2.00'	31°57'45"	128.31'	65.87'	126.65'	S.69°54'08"W.
5	2.00'	31°57'45"	145.04'	74.46'	143.17'	S.69°54'08"W.
6	2.00'	46°23'53"	210.55'	111.43'	204.84'	N.70°55'04"W.
7	2.01'	25°01'17"	100.44'	51.04'	99.65'	N.81°36'36"W.
8	2.00'	21°22'36"	85.81'	43.41'	85.32'	N.58°24'09"W.
9	2.00'	70°31'44"	36.93'	21.21'	34.64'	N.12°27'16"W.
10	2.00'	114°48'42"	120.23'	93.84'	101.10'	N.34°35'45"W.
11	2.00'	135°43'02"	142.12'	147.46'	111.15'	S.20°08'23"W.
12	2.00'	28°53'12"	146.21'	74.69'	144.66'	S.62°09'43"E.
13	2.00'	17°30'41"	88.63'	44.66'	88.29'	S.85°21'40"E.

Line	Bearing	Distance
L1	N.15°27'23"W.	71.19'
L2	N.07°52'22"E.	53.43'
L3	N.28°35'03"E.	57.45'
L4	N.02°45'03"W.	63.66'
L5	N.22°57'37"W.	82.53'
L6	N.02°10'09"E.	59.34'
L7	N.34°28'31"E.	68.25'
L8	S.45°22'05"E.	49.71'
L9	S.46°31'35"E.	41.71'
L10	S.51°55'25"E.	77.77'
L11	S.44°44'52"E.	87.83'

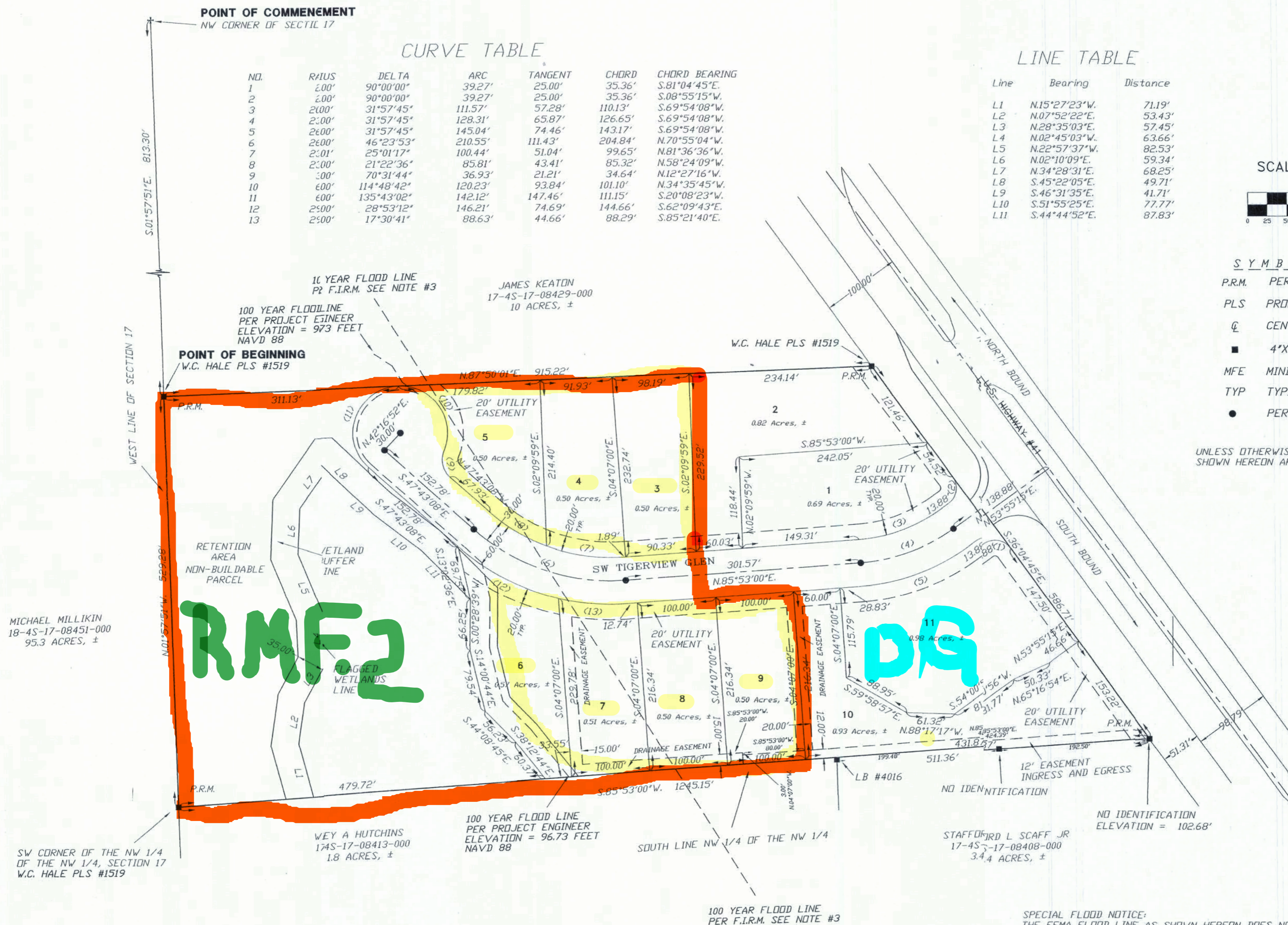
SCALE: 1" = 100'



S Y M B O L L E G E N D:

P.R.M.	PERMANENT REFERENCE MONUMENT
PLS	PROFESSIONAL LAND SURVEYOR
CL	CENTERLINE
■	4"X4" CONCRETE MONUMENT
MFE	MINIMUM FLOOR ELEVATION
TYP	TYPICAL
●	PERMANENT CONTROL POINT

UNLESS OTHERWISE SHOWN HEREON ALL CORNERS
SHOWN HEREON ARE L.S. BRITT PLS #5757



SPECIAL FLOOD NOTICE:
THE FEMA FLOOD LINE AS SHOWN HEREON DOES NOT REFLECT THE FILL DIRT PLACED
ON THESE PARCELS AS PER THE CONSTRUCTION PLANS AND PERMITTED BY THE
SUWANNEE RIVER WATER MANAGEMENT DISTRICT AGENCY.

RFJ PROPERTIES, INC
934 N.E. LAKE DESOTO CIRCLE
LAKE CITY, FLORIDA, 32055
386-755-3456

HUEY HAWKINS
6855 W ELIM CHURCH ROAD
FORT WITE, FLORIDA, 32038
386-755-2295

NOTICE:
THIS PLAT AS RECORDED IN ITS GRAPHICAL FORM, IS THE
OFFICIAL DEPICTION OF THE SUBDIVIDED LANDS DESCRIBED
HEREIN AND WILL IN NO CIRCUMSTANCES BE SUPPLANTED IN
AUTHORITY BY OTHER GRAPHICAL OR DIGITAL FORM OF THE
PLAT. THERE MAY BE ADDITIONAL RESTRICTIONS THAT ARE NOT
RECORDED ON THIS PLAT THAT MAY BE FOUND IN THE PUBLIC
RECORDS OF THIS COUNTY.

BRITT SURVEYING
& ASSOCIATES, INC.

LAND SURVEYORS AND MAPPERS

830 WEST DUVAL STREET LAKE CITY, FLORIDA 32055
(386)752-7163 FAX (386)752-5573

WORK ORDER # L- **17127**

