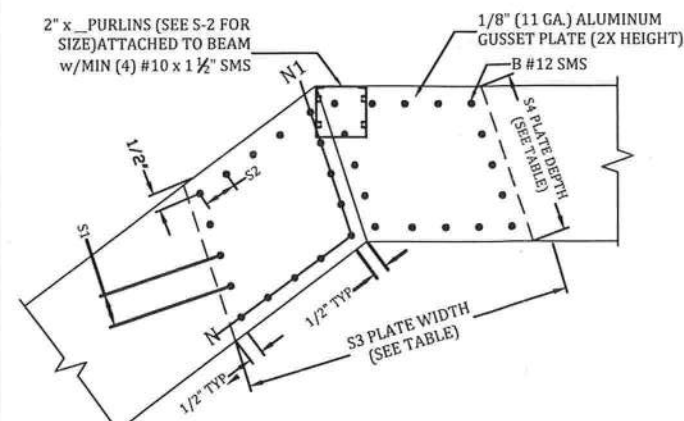


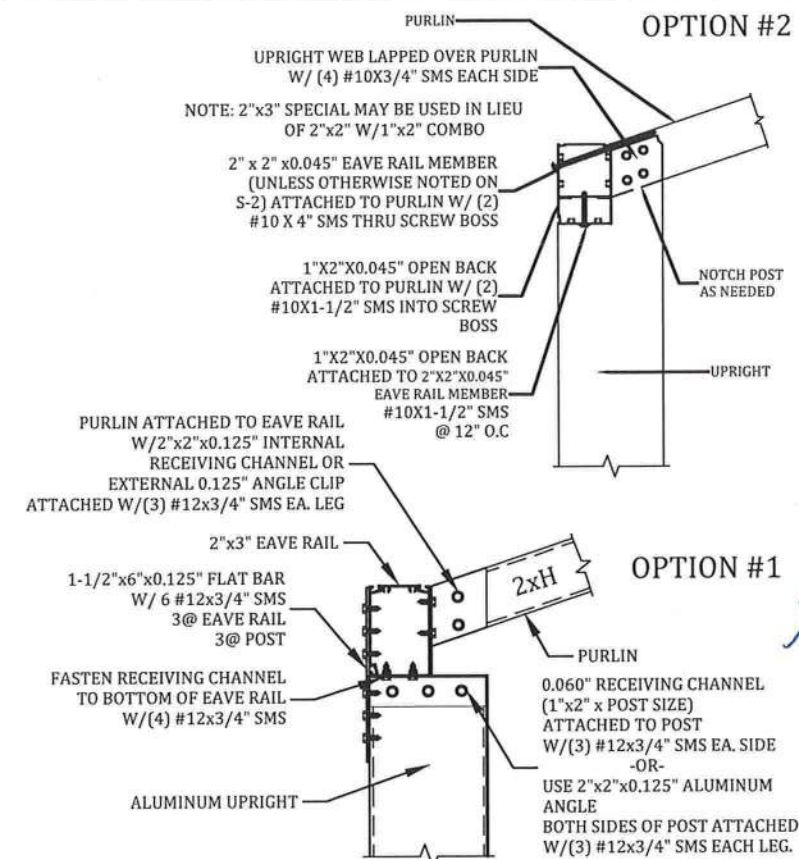
**A**  
S-3 GUTTER BRACKET & BEAM ATTACHMENT DETAIL  
N.T.S.



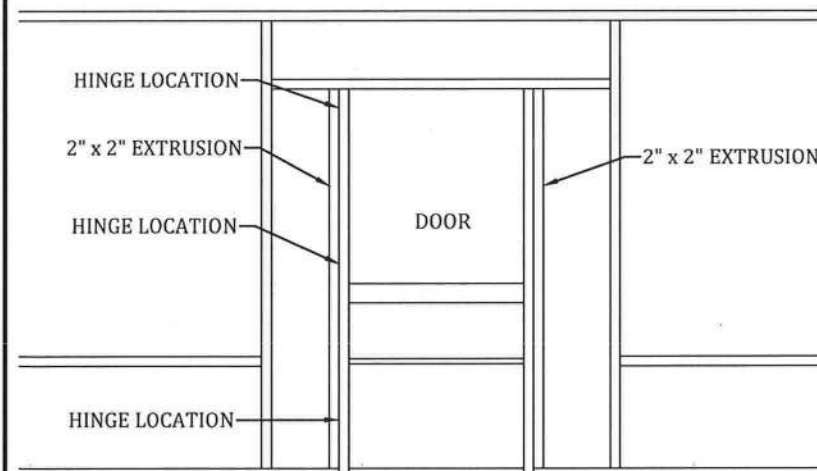
NOTES:  
1. "N" NUMBER OF SCREWS IN ANY DIRECTION.  
2. TOTAL NUMBER OF SCREWS PER JOINT EQUALS 4 TIMES "B".  
3. PLATE WIDTH SHALL BE DETERMINED FROM ANGLE OF BEAM AND MIN. SPACE REQUIRED.  
4. GUSSET PLATES EXTERNAL.  
5. INTERNAL SCREWS FOR PURLIN CONNECTION MAY BE INCLUDED IN TOTAL NUMBER OF SCREWS.  
6. GABLE SPLICE WILL HAVE THE SAME PATTERN.

BEAM	"B"	"N"	"N1"	"S1"	"S2"	"S3"	"S4"
2X4	14	4	4	1"	1"	8"	4"
2X5	16	5	4	1 3/8"	1 1/4"	10"	5"
2X6	18	6	5	1"	1 3/8"	12"	6"
2X7	20	6	6	1"	1"	14"	7"
2X8	24	7	7	1 3/8"	1 3/8"	16"	8"
2X9	32	10	8	1 5/8"	1 1/8"	18"	9"
2X9 H	32	10	8	1 5/8"	1 1/8"	18"	9"
2X10	40	13	9	1 1/4"	7/8"	20"	10"

**B**  
S-3 #12 SMS BEAM SPLICE GUSSET DETAIL  
SCALE: N.T.S.

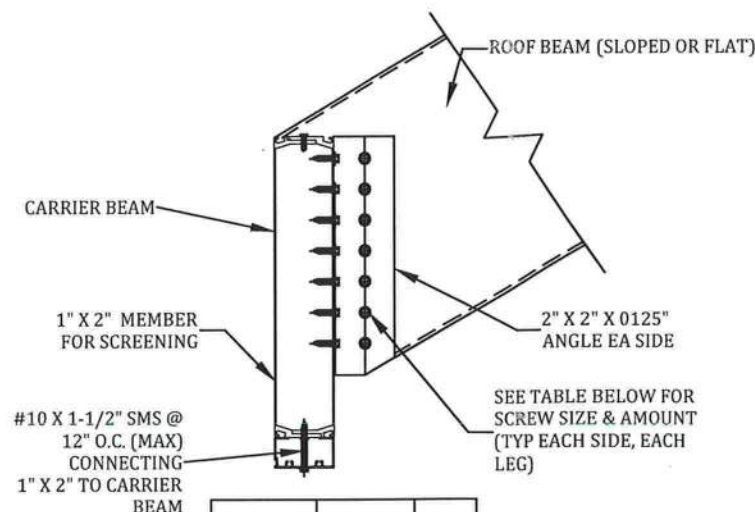


**C**  
S-3 SLOPED OR FLAT PURLIN UPRIGHT LAP DETAIL  
SCALE: N.T.S.



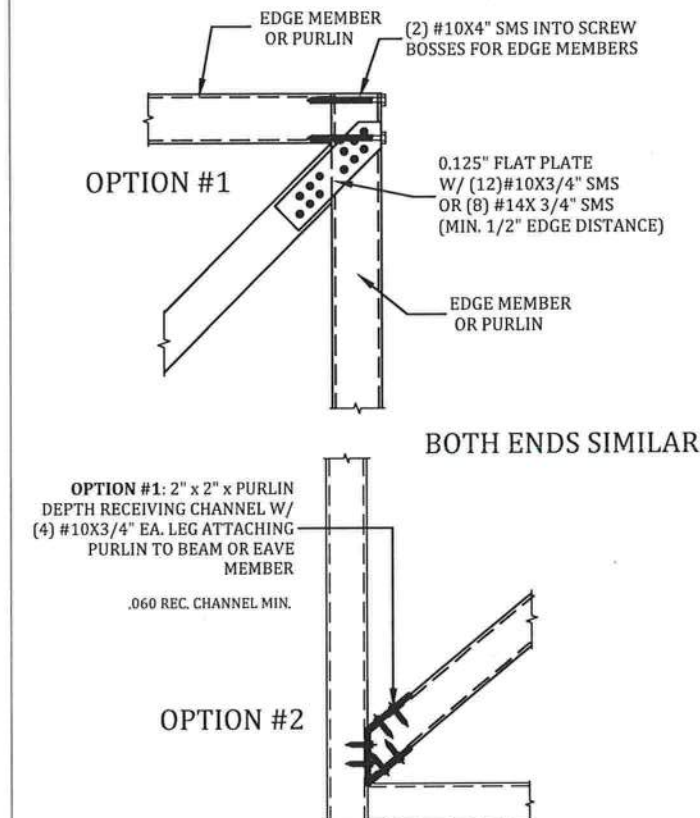
- NOTES:**  
1. HINGES SHALL BE ATTACHED TO STRUCTURE W/ (4) #10 x 5/8" SMS MINIMUM.  
2. DOOR SHALL BE ATTACHED TO ENCLOSURE W/ (2) HINGES MINIMUM.  
3. HINGES SHALL BE ATTACHED TO DOOR WITH (3) #10 x 5/8" SMS. FASTEN A 1" x 2" x 0.044" TO UPRIGHT W/ #12 x 1" SMS @ 12" O.C. AND WITHIN 3" FROM END OF THE UPRIGHT.

**F**  
S-3 TYPICAL SCREEN DOOR CONNECTION DETAIL  
SCALE: N.T.S.

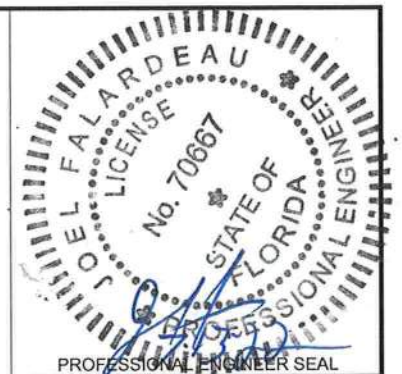


Roof Beam Size	3/4" SMS PER SIDE PER LEG OF ANGLE	QTY
2x4	#12	4
2x5	#12	5
2x6	#12	5
2x7	#14	6
2x8	#14	7
2x9	#14	8
2x10	#14	9

**D**  
S-3 BEAM TO CARRIER BEAM CONNECTION DETAIL  
SCALE: N.T.S.



**E**  
S-3 ROOF BRACING CONNECTION DETAIL  
SCALE: N.T.S.



**ENGINEER OF RECORD:**  
David W. Smith P.E.  
FLORIDA LICENSE: 53608  
Thomas L. Hanson P.E.  
FLORIDA LICENSE: 38654  
Ian J. Foster P.E.  
FLORIDA LICENSE: 93654  
Joel Falardeau P.E.  
FLORIDA LICENSE: 70667  
Erik Stuart P.E.  
FLORIDA LICENSE: 77605

**FBC Plans & Engineering Services, Inc.**  
6272 Abbott Station Dr. Unit 101  
Zephyrhills, FL 33542  
Ph# (813)788-5314  
Fax# 1-(866)824-7894  
E-mail-erb@fbcplans.com  
Website-www.fbcplans.com  
C.O.A.-#29054

DATE: 01/11/2022	
DRAWN BY: ST	
REVISION:	DATE:
RO 1	
RO 2	
RO 3	
RO 4	

Job# 22\_0711\_089  
**PROJECT ADDRESS:**  
**TERRELL**  
200 NW ANSLEY PL  
LAKE CITY, FL 32055

**CONTRACTOR:**  
LAKESIDE ALUMINUM, INC.

DETAILS  
**S-3**