

Current 

5K Modules Required



Dollar General Market #25861

E14441

Fort White, FL

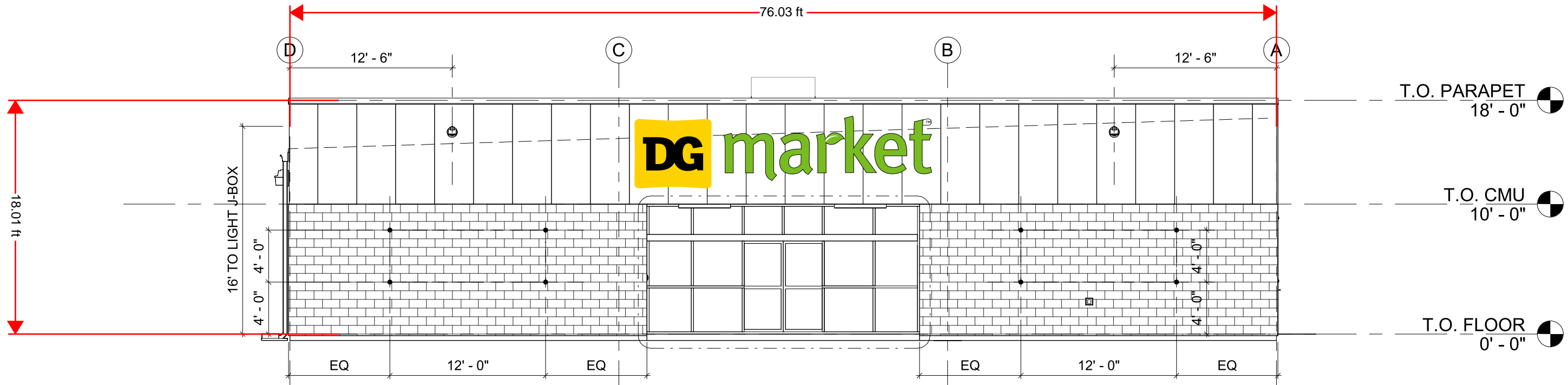
May 15, 2024



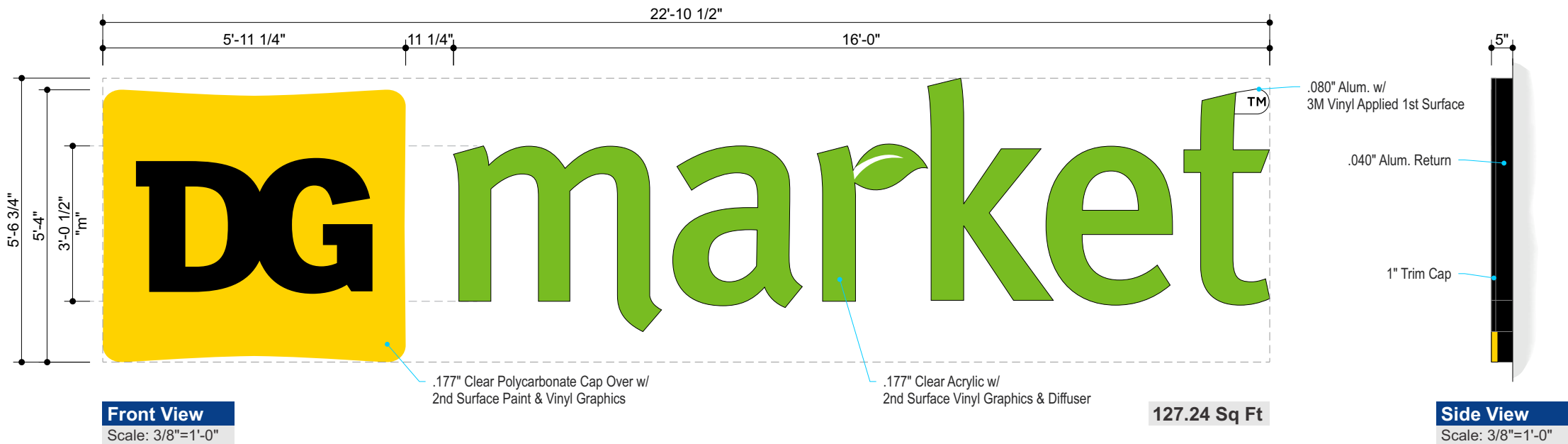
YOUR BRAND AT ITS BEST™

1-800-967-2553
www.allenindustries.com

Customer Approval / Signature	
Signature: _____	Date: _____



Front Elevation
Scale: 1/8"=1'-0"



Night View
Scale: 1/4"=1'-0"

Color Specifications

Black Trim Cap

Vinyl Specifications

3M 3630-136 Lime Green (translucent vinyl)
3M 3630-015 Yellow (translucent vinyl)
3M 3635-30 White (diffuser film)
3M 3630-22 Black (translucent vinyl)
3M 3630-20 White (translucent vinyl)

Paint Specifications

Paint to Match Pantone 109 C

All paint finishes to be Satin unless otherwise specified

General Specifications	
Face:	"market" .177" Clear Acrylic w/ 2nd Surface Vinyl & Diffuser w/ 1" Black Trim Cap "DG" .177" Clear Polycarbonate Cap Over w/ 2nd Surface Paint & Vinyl
Returns:	5" x .040" Alum. Coil Stock - Pre-Finished Black (Gloss)
Backs:	3mm ACM - Pre-Finished White
Illum:	White LEDs as Required by Manufacturer, Remote Power Supplies
Electrical:	Actual # of Circuits to be Determined by Licensed Electrical Contractor (1) 20 AMP Circuit, 120 Volts
Wall Type:	TBD
Install:	Channel letters to be installed using min. 3/8" all thread fasteners (or approved equivalent) and wood blocking as required
Quantity:	(1) ONE

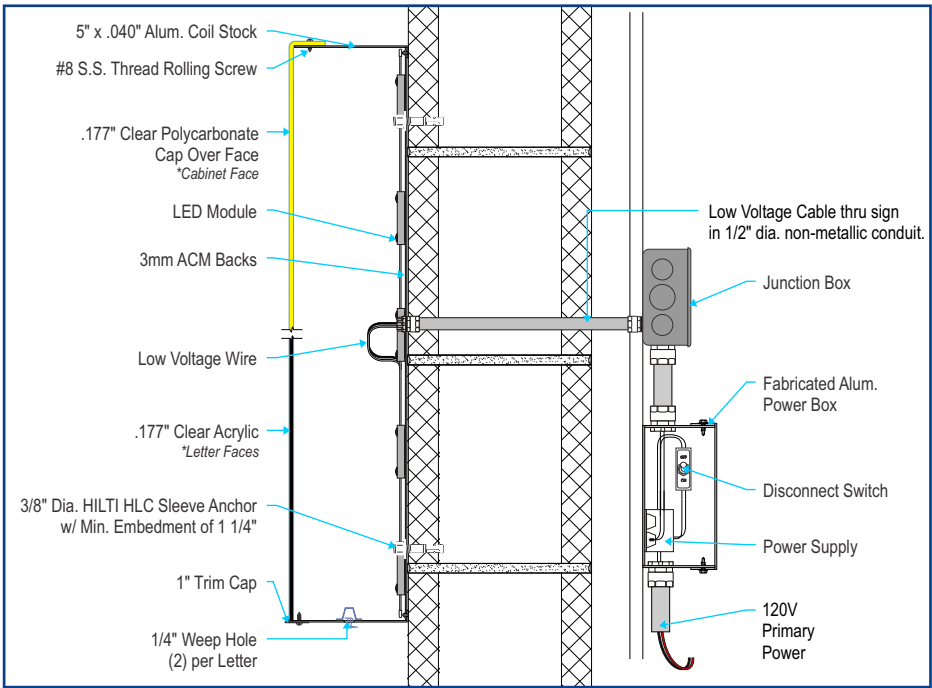
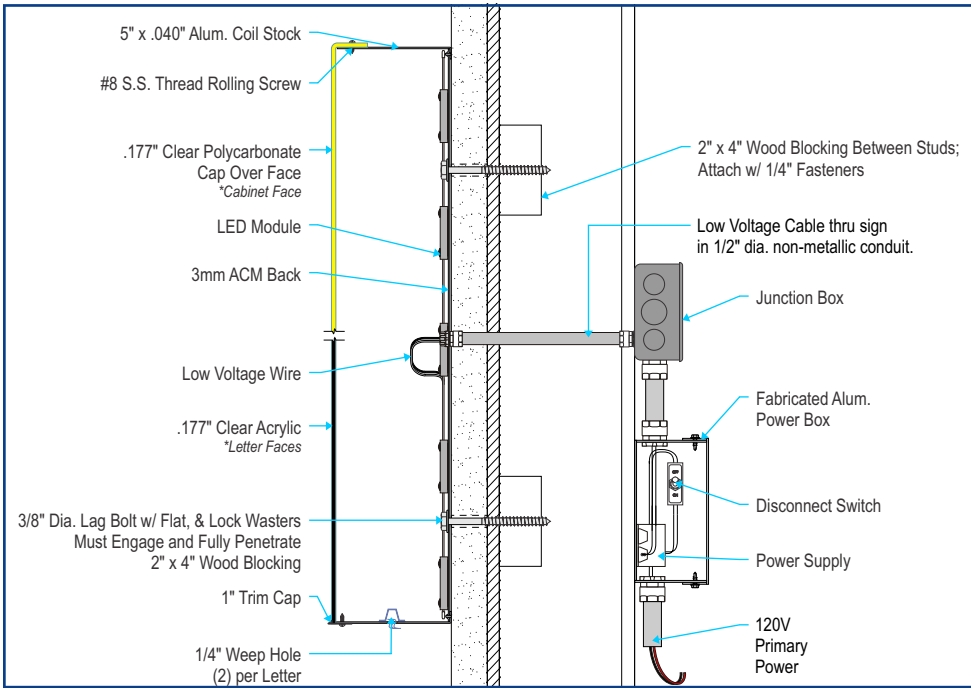
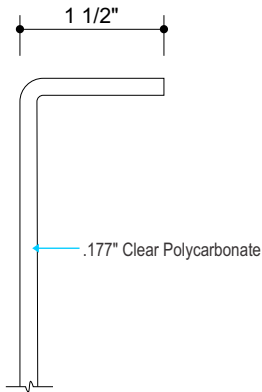
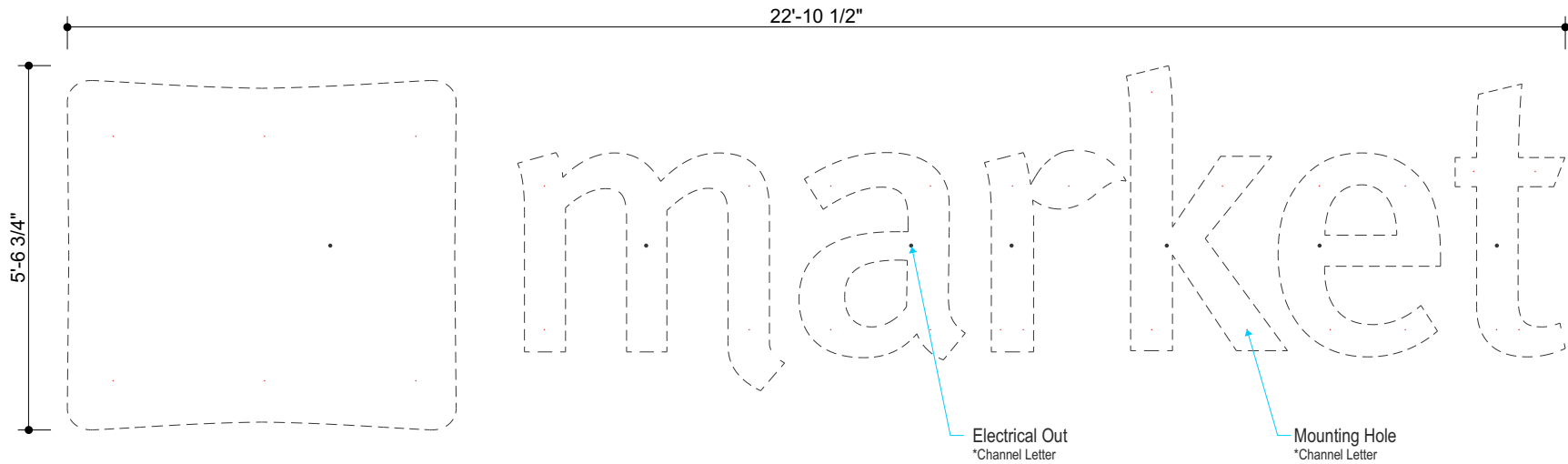
Allen Industries
FILE NUMBER: E212503

Listed
MET
E212503

Electric Sign
Complies with
UL48

THIS SIGN IS INTENDED TO BE INSTALLED IN ACCORDANCE WITH THE REQUIREMENTS OF ARTICLE 600 OF THE NATIONAL ELECTRICAL CODE AND/OR OTHER APPLICABLE LOCAL CODES. THIS INCLUDES PROPER GROUNDING AND BONDING OF THE SIGN.

GROUNDED
ELECTRICAL
CONNECTIONS



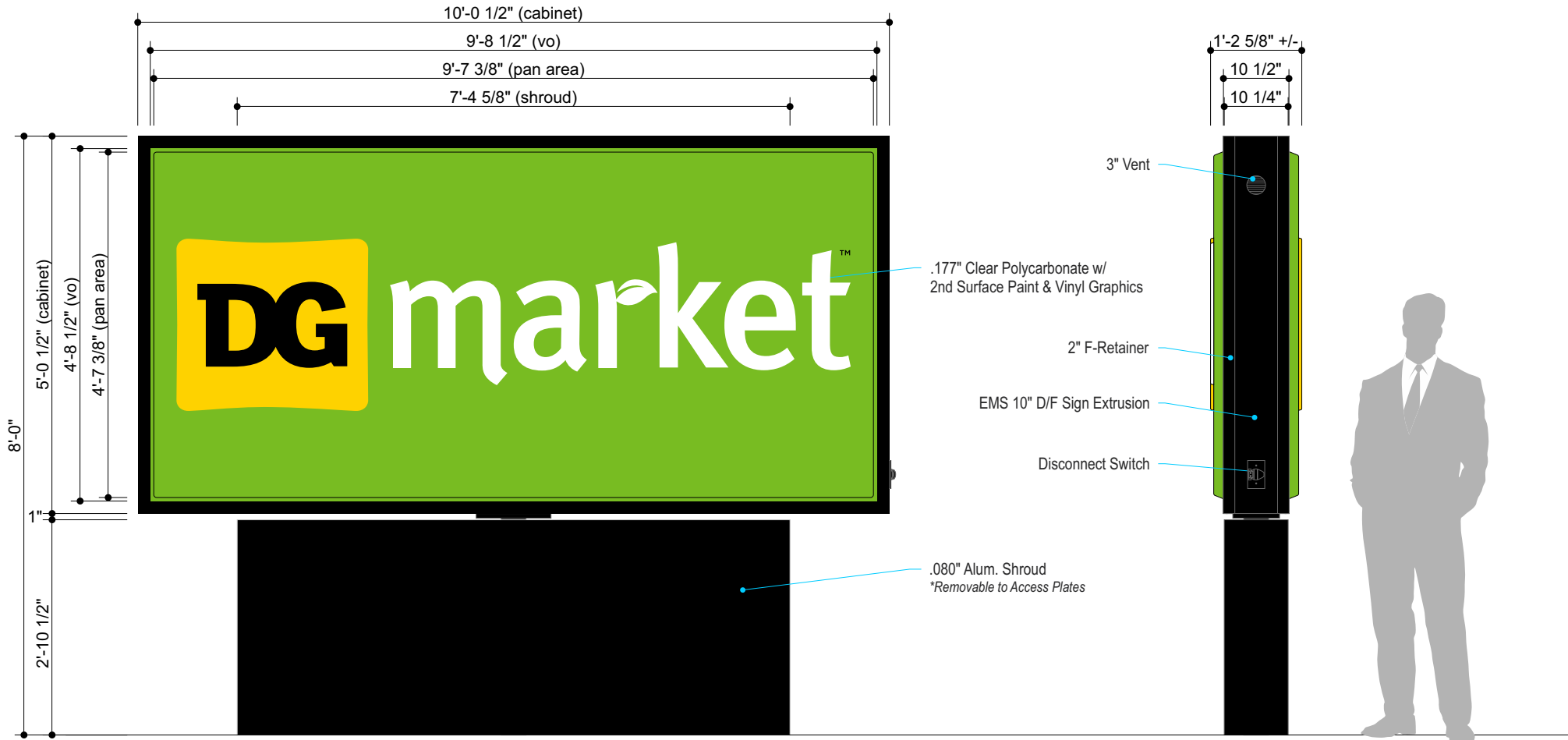
Hardware Mounting Chart				
Note: Threaded Rod will be Provided Standard for All. Other Hardware Is to be Provided by the Installer As Req.	Masonry	Wood	Metal	
Signs and Raceways				
3/8" Zinc Plated Steel Threaded Rod Thru Wall	•	•	•	
3/8" Lags with Shields	•			
3/8" Lag Bolts		•		
3/8" Toggle Bolts			•	

HWL 150 MPH Dollar General Market - 5'-0" x 10'-0" Monument Sign

Internally Illuminated - LED

Insert Item Code

DESIGN INTENT ONLY
Engineering Required to
Determine Actual Production
& Installation Requirements



Front View
Scale: 1/2"=1'-0"

50.63 Sq Ft

Side View
Scale: 1/2"=1'-0"



Night View
Scale: 3/8"=1'-0"

Vinyl Specifications

- 3M 3630-136 Lime Green (translucent vinyl)
- 3M 3635-015 Yellow (translucent vinyl)
- 3M 3630-22 Black (translucent vinyl)
- 3M 3630-20 White (translucent vinyl)

Paint Specifications

- Paint to Match Pantone 109 C
- Paint to Match Pantone 368 C
- White Diffuser
- Black (Semi-Gloss)

All paint finishes to be Satin unless otherwise specified

General Specifications

- Faces:** .177" Clear Polycarbonate Pan Formed / Embossed w/ 2nd Surface Paint & Vinyl Graphics
- Cabinet:** EMS 10" Alum. Sign Frame Cabinet w/ F-Retainers. Exterior Painted Black (Semi Gloss), Interior Painted White
- Illum:** White LEDs as Required by Manufacturer, Self Contained Power Supplies
- Electrical:** Actual # of Circuits to be Determined by Licensed Electrical Contractor
(1) 20 AMP Circuit, 120 Volts
- Quantity:** (1) ONE



Electric Sign
Complies with
UL48

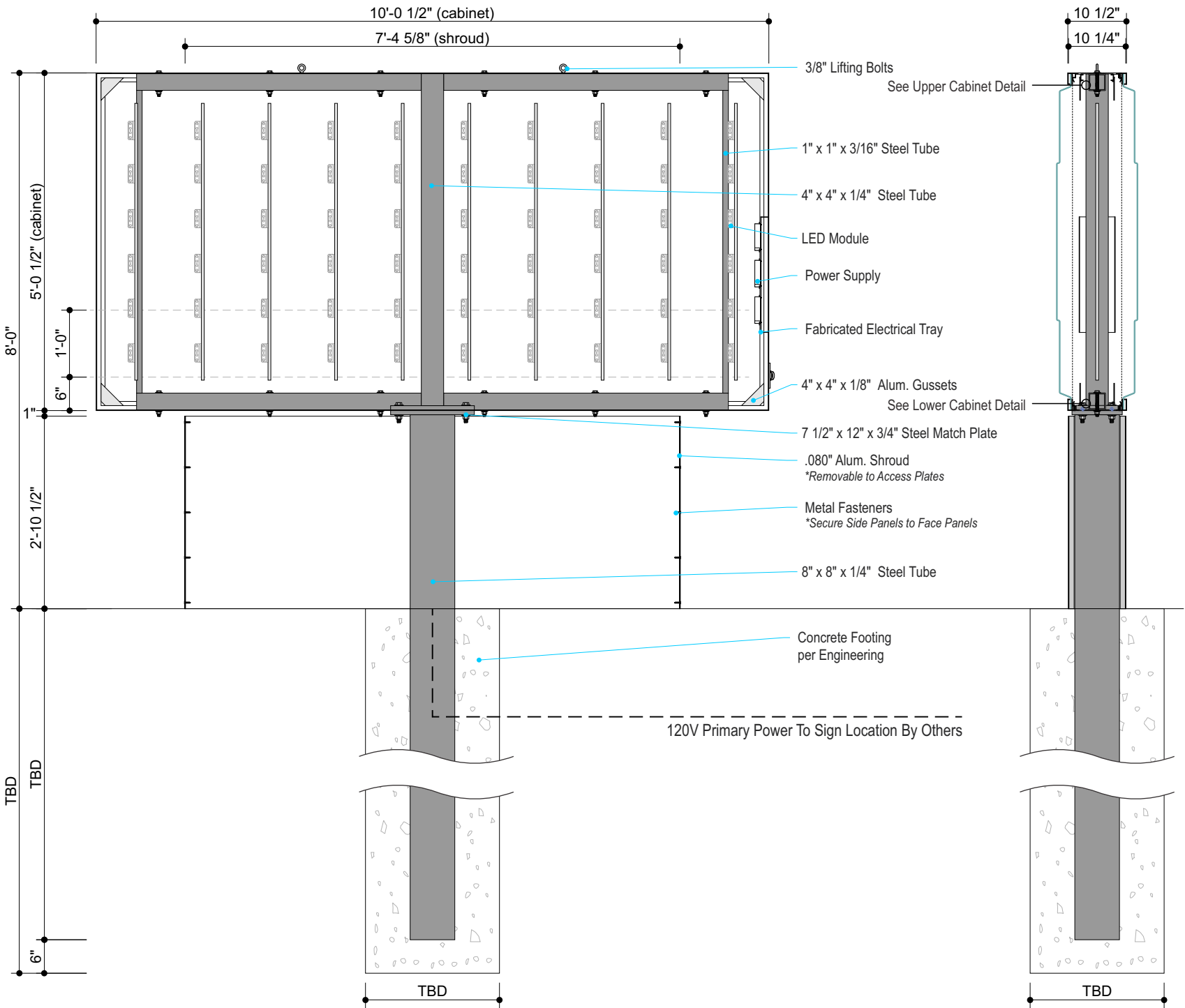
THIS SIGN IS INTENDED TO BE INSTALLED IN ACCORDANCE WITH THE REQUIREMENTS OF ARTICLE 600 OF THE NATIONAL ELECTRICAL CODE AND/OR OTHER APPLICABLE LOCAL CODES. THIS INCLUDES PROPER GROUNDING AND BONDING OF THE SIGN.



HWL 150 MPH Dollar General Market - 5'-0" x 10'-0" Monument Sign

Production Detail

DESIGN INTENT ONLY
Engineering Required to
Determine Actual Production
& Installation Requirements

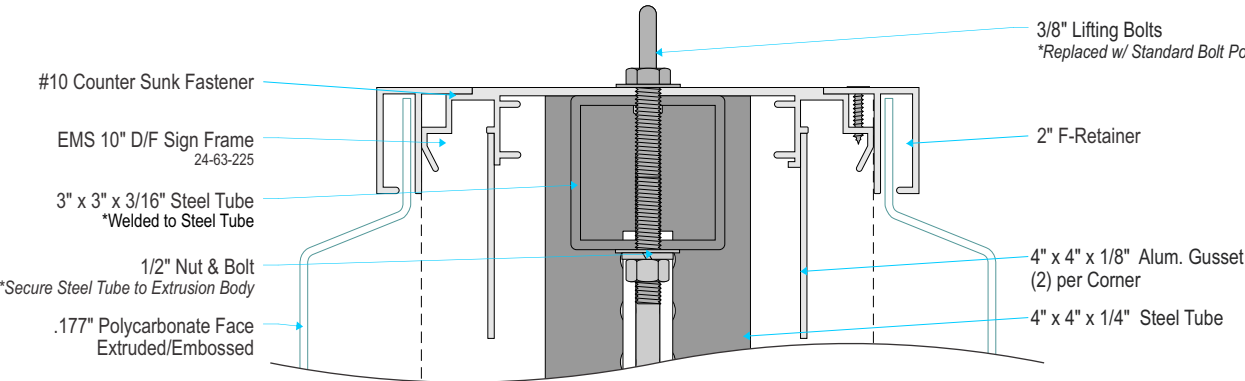


Front Detail

Scale: 1/2"=1'-0"

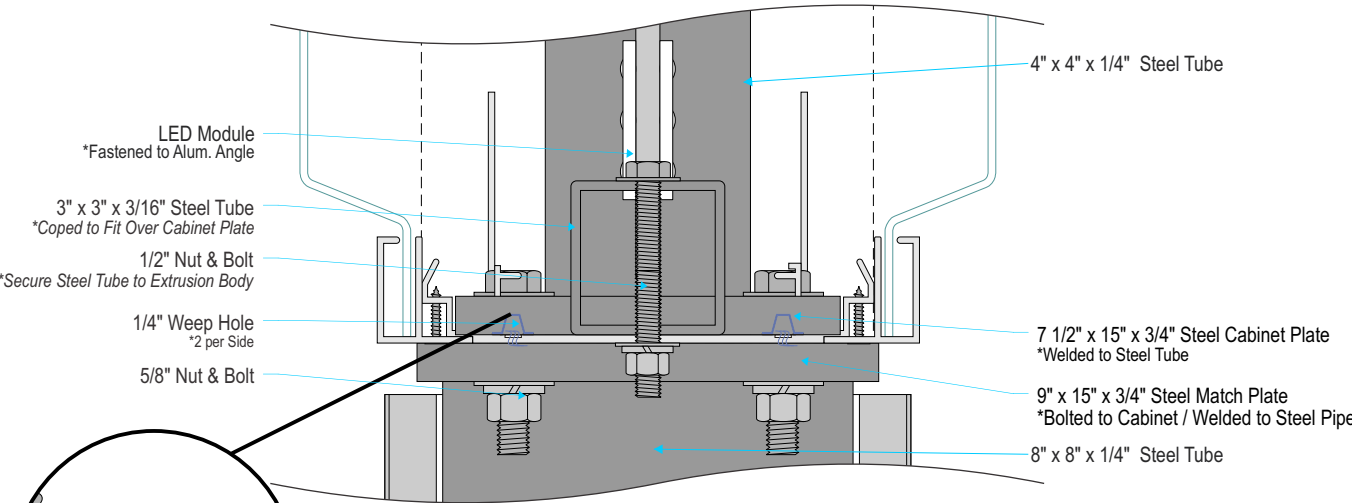
Side Detail

Scale: 1/2"=1'-0"



Cabinet Upper Section Detail

Scale: 3"=1'-0"

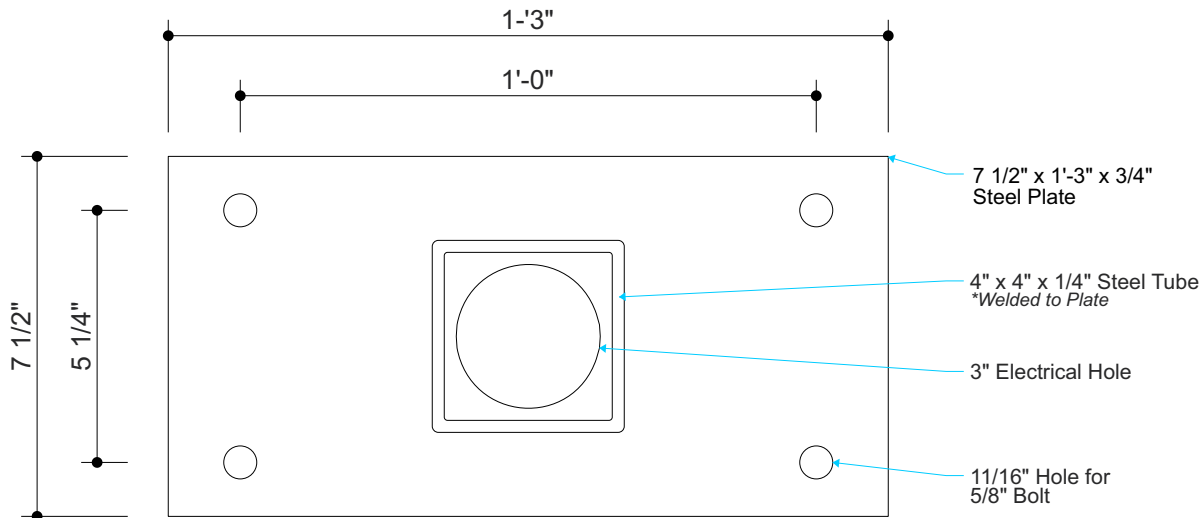


Cabinet Lower Section Detail

Scale: 3"=1'-0"

Top/Bottom Extrusion Modified as Needed for Clearance

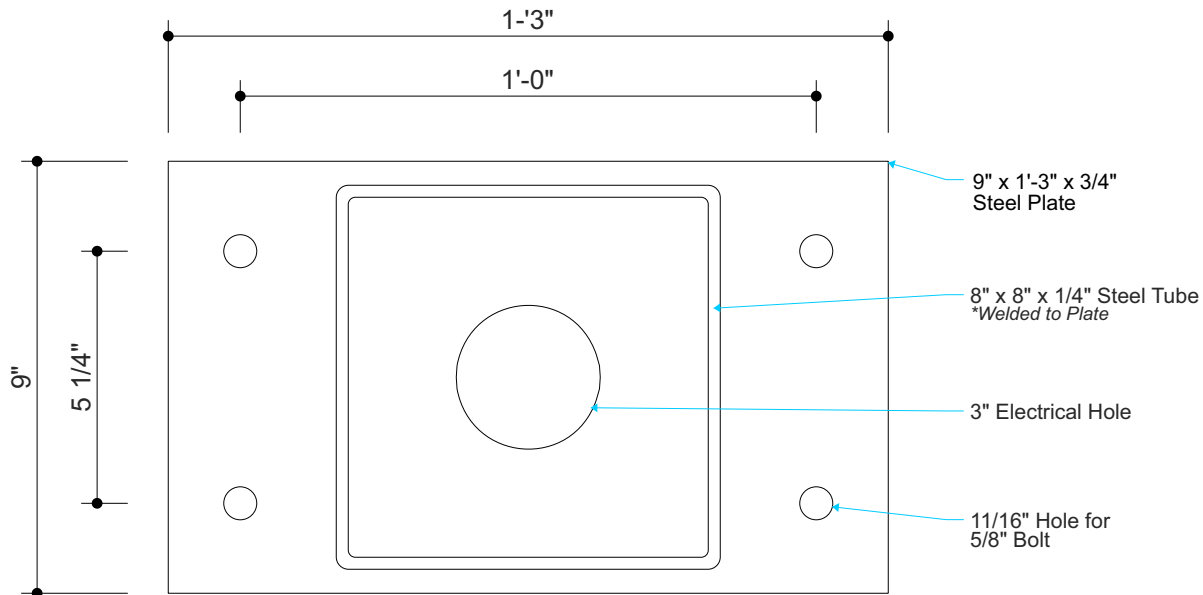
DESIGN INTENT ONLY
Engineering Required to
Determine Actual Production
& Installation Requirements



Cabinet Plate Detail

Scale: 3"=1'-0"

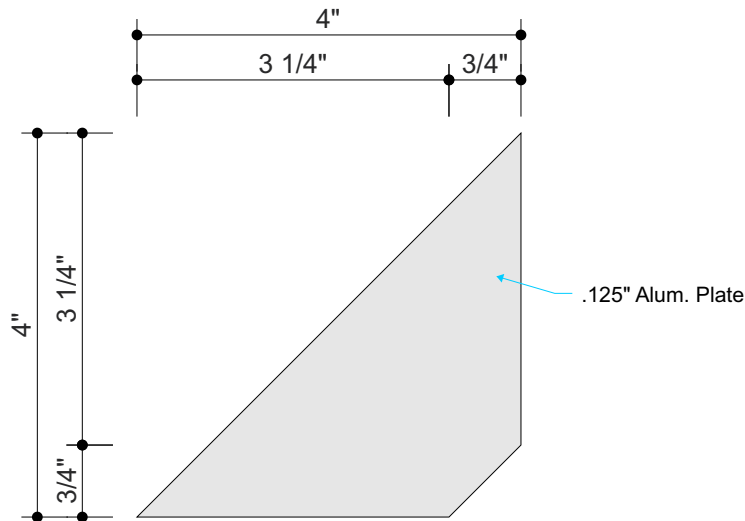
Quantity: 1



Match Plate Detail

Scale: 3"=1'-0"

Quantity: 1



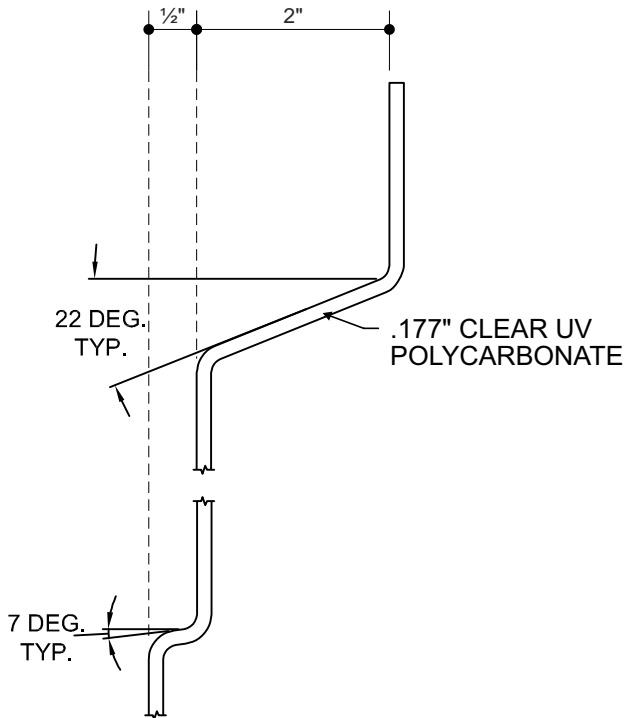
Gusset Detail

Scale: 6"=1'-0"

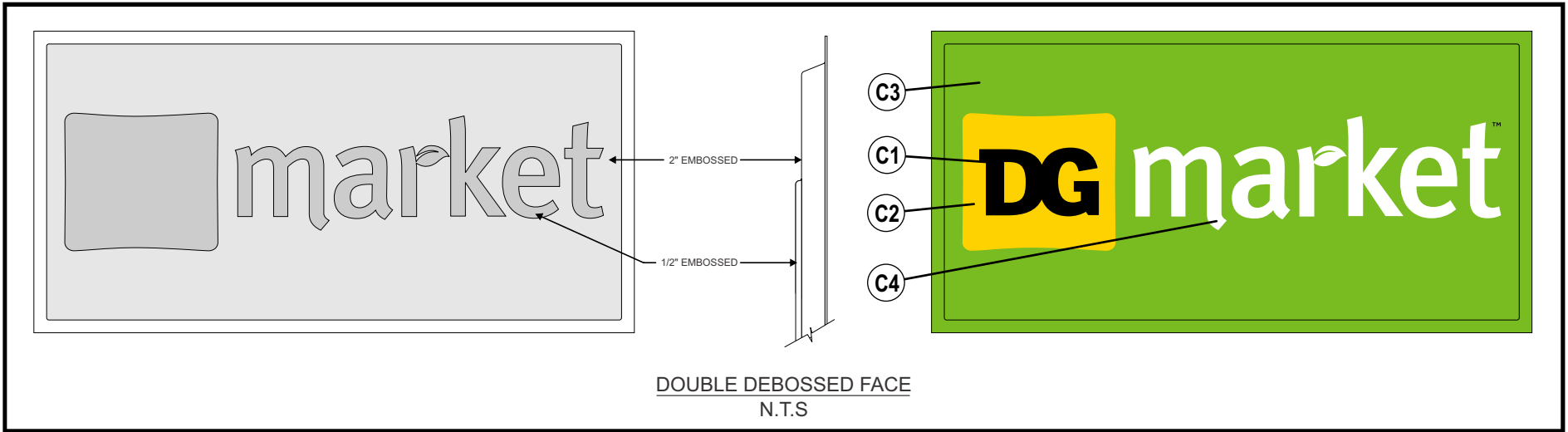
Quantity: 8



Front View
Scale: 1/2"=1'-0"



Face Embossment Detail
Scale: 6"=1'-0"



Vinyl Specifications

C1 3M 3630-22 Black (translucent vinyl)

C2 3M 3630-015 Yellow (translucent vinyl)

Paint Specifications

C3 Paint to Match PMS 368 C

C4 White Diffuser

All paint finishes to be Satin unless otherwise specified

