

ROOF VENT CALCULATION					
FORMULA					
1 SQUARE INCH FOR EVERY 300 SQUARE INCHES OF CEILING (144 SQUARE INCHES = 1 SQUARE FOOT) BUILDING CEILING (SQ FT) X 1.44 = BUILDING (SQ IN) BUILDING (SQ IN) / 300 = SQ IN OF VENT REQUIRED SQ IN OF VENT REQUIRED / 2 = 50% AT HIGH AND 50% AT LOW PER REC. SECTION R802.2, 40% MIN. BUT NOT MORE THAN 50% OF VENTILATION MUST BE PROVIDED BY VENTILATORS LOCATED AT MIN 3'-0" ABOVE EAVE					
BASE OF CALCULATION					
(A) OFF ROOF VENTS - STAMPED W/ 36 SQ IN (IN/VA) PER LINEAL FT					
(B) SOFFIT VENTS - 6" T3-1/2" FULL VENT PERFORATED W/ 9.19 SQ IN (IN/VA) PER LINEAL FT					
CALCULATED UNLA FOOT OF SOFFIT VENT SHALL NOT INCLUDE NON-VENTED FIRE RATED SOFFIT LOCATED LESS THAN 2' FROM PROPERTY LINE					
AREA (SQ FT)	REQUIRED VENTS (SQ IN)	PROVIDED VENTS (SQ IN)	HEIGHT (FT)	UNLA (FT)	LOW (SQ IN)
RIGHT (1) 12' VENT = 216 SQ IN					
LOW (1) UNLA FT = 9.19 SQ IN					
SOFFIT TABLE VENT SPECS					
Double 5" perforated soffits have a 6.20 sq. inch/sq. foot rating					
Triple 4" center vent soffits have a 1.95 sq. inch/sq. foot rating					
Triple 4" full vent soffits have a 5.67 sq. inch/sq. foot rating					
Triple 4" basketweave full vent have a 14.34 sq. inch/sq. foot rating					
Double 4" center vent have a 4.78 sq. inch/sq. foot rating					
Double 4" center vent have a 2.66 sq. inch/sq. foot rating					
Triple 5-1/2" hidden vent soffits have a 9.19 sq. inch/sq. foot rating					

NOTE
7/16" O.S.B. NAILED WITH 8D 6"
O.C. IN FIELD 4' 4" O.C. ON EDGES

NOTE

Simpson Strong-Tie Co. Strong-Drive SDWC TRUSS Screws may be used for uplift connection in lieu of straps. Strong-Drive SDWC TRUSS Screws to be installed per manufacturer's specifications.

Simpson Strong-Tie Co. Titen HD Heavy-Duty Screw Anchors 5/8" x 8", maximum spacing of 42" o.c., may be used in lieu of 5/8"x10" anchor bolts with 3"x3"x1/8" washer. Titen HD Heavy-Duty Screw Anchors shall be installed per manufacturer's specifications.

ROOF SHEATHING FASTENING

- 4" O.C. GABLE END
 - 6" O.C. EDGES (ALL ZONES)
 - 6" O.C. INTERMEDIATE FRAMING (ZONE 3)
 - 12" O.C. INTERMEDIATE FRAMING (ZONES 1 & 2)
- SEE FIGURE R803.2.3.1, SECTION R803.1, 2017 FLORIDA BUILDING CODE - RESIDENTIAL, SIXTH EDITION FOR ROOF SHEATHING NAILING ZONES

ROOF NOTES

ROOF PITCH LESS THAN 4/12 DBL LAYER OF UNDERLAYMENT IS REQUIRED
OVERLAP ROOFING UNDERLAYMENT 4" MIN OVER HIPPS AND RIDGES

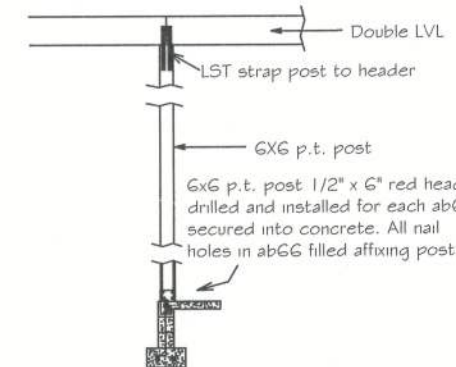
BUTTON CAP NAILS ARE USED TO FASTEN UNDERLAYMENT TO ROOF DECK WHEN SHINGLES NOT INSTALLED SAME DAY

DROP EDGE INSTALLED OVER THE UNDERLAYMENT AT RAKES AND UNDER THE UNDERLAYMENT AT EAVES

ALL ROOF PENETRATIONS ARE PROPERLY FLASHED W/ FLASHING OF THE CORRECT SIZE FOR THE PENETRATION

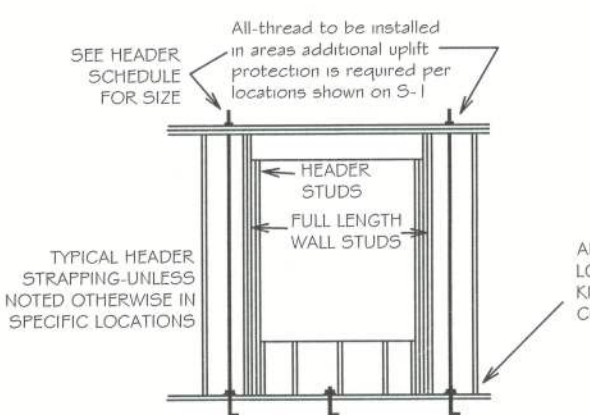
METAL ROOFING ATTACHED W/ CORRECT FASTENERS PER CODE AND MANUFACTURERS SPECS

1" SPACE IS MAINTAINED BETWEEN THE END OF THE GUTTER AND THE WALL CLADDING



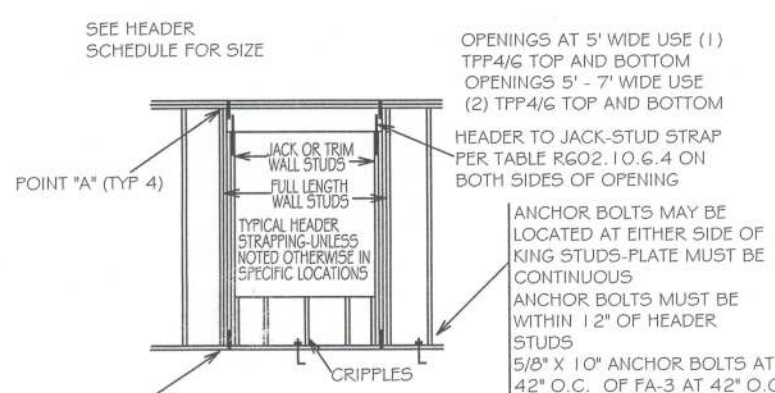
LVL CONNECTION DETAIL
NOT TO SCALE

Double 1 3/4" x 11-1/4" LVL beam over opening up to 12'
Double 1 3/4" x 11-7/8" LVL beam over opening over 12'
and up to 14'
Double 1 3/4" x 14" LVL beam over opening over 14' and up to 16' with 3 king studs each end and 2 trimmers each end of beam. Fastened with 12d nails to top plate and framing members. One FA-28 at both sides of opening embedded min 4" into concrete. LST18 strap over trimmer to header each side.



TYPICAL ALL THREAD DETAIL
NOT TO SCALE

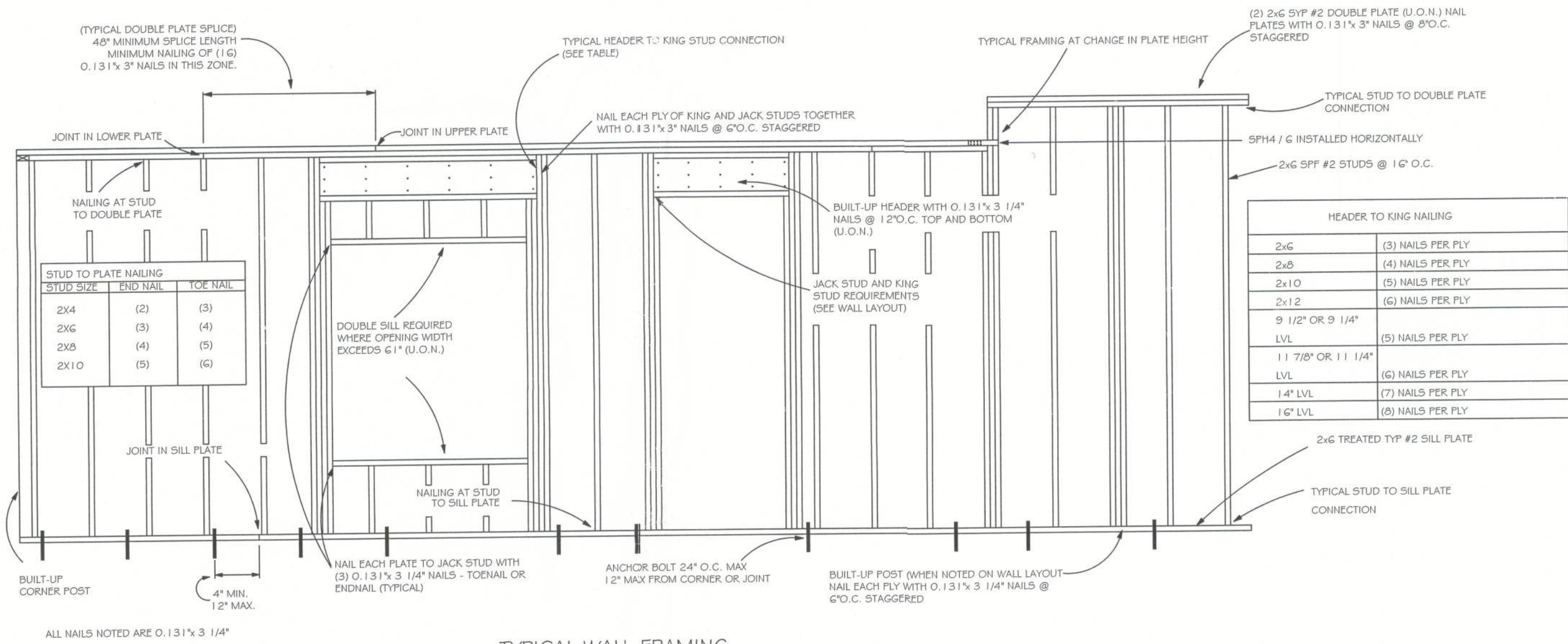
ANCHOR BOLTS MAY BE LOCATED AT EITHER SIDE OF KING STUDS-PLATE MUST BE CONTINUOUS
ANCHOR BOLTS MUST BE WITHIN 12" OF HEADER STUDS



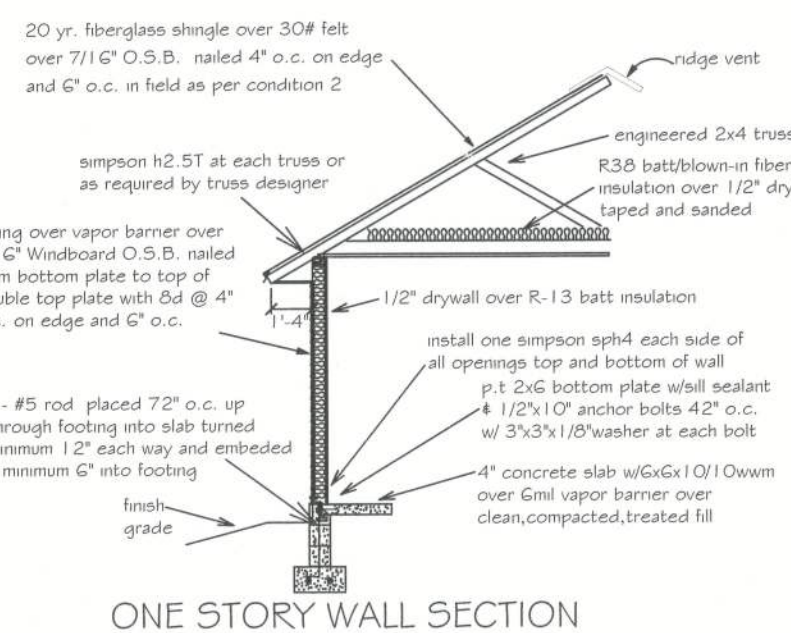
TYPICAL HEADER STRAPPING
NOT TO SCALE

SEE HEADER SCHEDULE FOR SIZE
OPENINGS AT 5' WIDE USE (1) TYPING TOP AND BOTTOM OPENINGS 5' - 7' WIDE USE (2) TYPING TOP AND BOTTOM
HEADER TO JACK-STRAP PER TABLE R602.10 G. 4 ON BOTH SIDES OF OPENING
ANCHOR BOLTS MAY BE LOCATED AT EITHER SIDE OF KING STUDS-PLATE MUST BE CONTINUOUS
ANCHOR BOLTS MUST BE WITHIN 12" OF HEADERS
5/8" x 10" OF ANCHOR BOLTS AT 42" O.C. OF FA-3 AT 42" O.C.

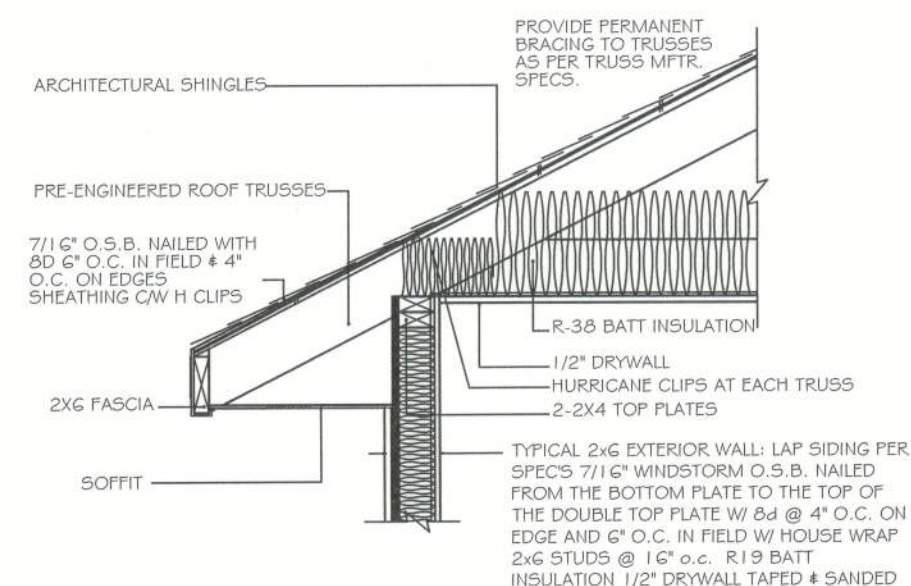
UPLIFT CONNECTIONS REQUIRED AT POINT "A" (TOP & BOTTOM OF CRIPPLES) UPLIFT LOAD PER FRAMING MEMBER ABOVE THE HEADER MULTIPLIED BY THE NUMBER OF FRAMING MEMBERS DIVIDED BY TWO



TYPICAL WALL FRAMING
NOT TO SCALE



ONE STORY WALL SECTION



4" STUD EAVE

HEADER SCHEDULE			NOTE: UPLIFT CONNECTION IS REQUIRED AT EACH END OF HEADER AND AT BOTTOM OF HEADER STUDS IN ADDITION TO CONNECTORS AT WALL STUDS AND AT TOP AND BOTTOM OF CRIPPLES	
2x STUD CONTINUOUS TO TOP PLATE	HEADER - CONTINUOUS			
2 - 2x STUDS UNDER UNITS WITH OPENINGS LARGER THAN 5'-0"				
OPENING WIDTH	BEARING OR SHEAR WALL	NON-BEARING WALLS	MAXIMUM HEADER SPAN	
0'-0" TO 3'-0"	2 - 2 X 6's	2 - 2 X 4's	3'	6'
3'-1" TO 5'-0"	2 - 2 X 10's	2 - 2 X 6's	9'	12'
5'-1" TO 7'-0"	2 - 2 X 10's	2 - 2 X 8's	15'	18'
7'-1" TO 10'-0"	2 - 2 X 10's	2 - 2 X 10's		
			NUMBER OF FULL LENGTH STUDS (KINGS) AT END OF HEADER	
			1	2



Digitally signed by Carol Chadwick
DN: cn=US, o=Florida, dnQualifier=A01410D000017E8, dnQualifier=A01410D000017E8, cn=Carol Chadwick
Date: 2023.05.08 22:24:28 -0400

Printed copies of this document are not considered signed and sealed and the signature must be verified on any electronic copies.

CAROL CHADWICK
Professional Engineer
State of Florida
License No. 82830

STRAWDER RESIDENCE
FRAMING DETAILS
504 SW PHOENIX GLEN, LAKE CITY, FL

PROJECT: FL 23104
DATE: MAY 8, 2023
REVISION: 1
SHEET: 5-2