

STANDARD HEADER SCHEDULE

0'-0" UP TO 6'-0" OPENINGS

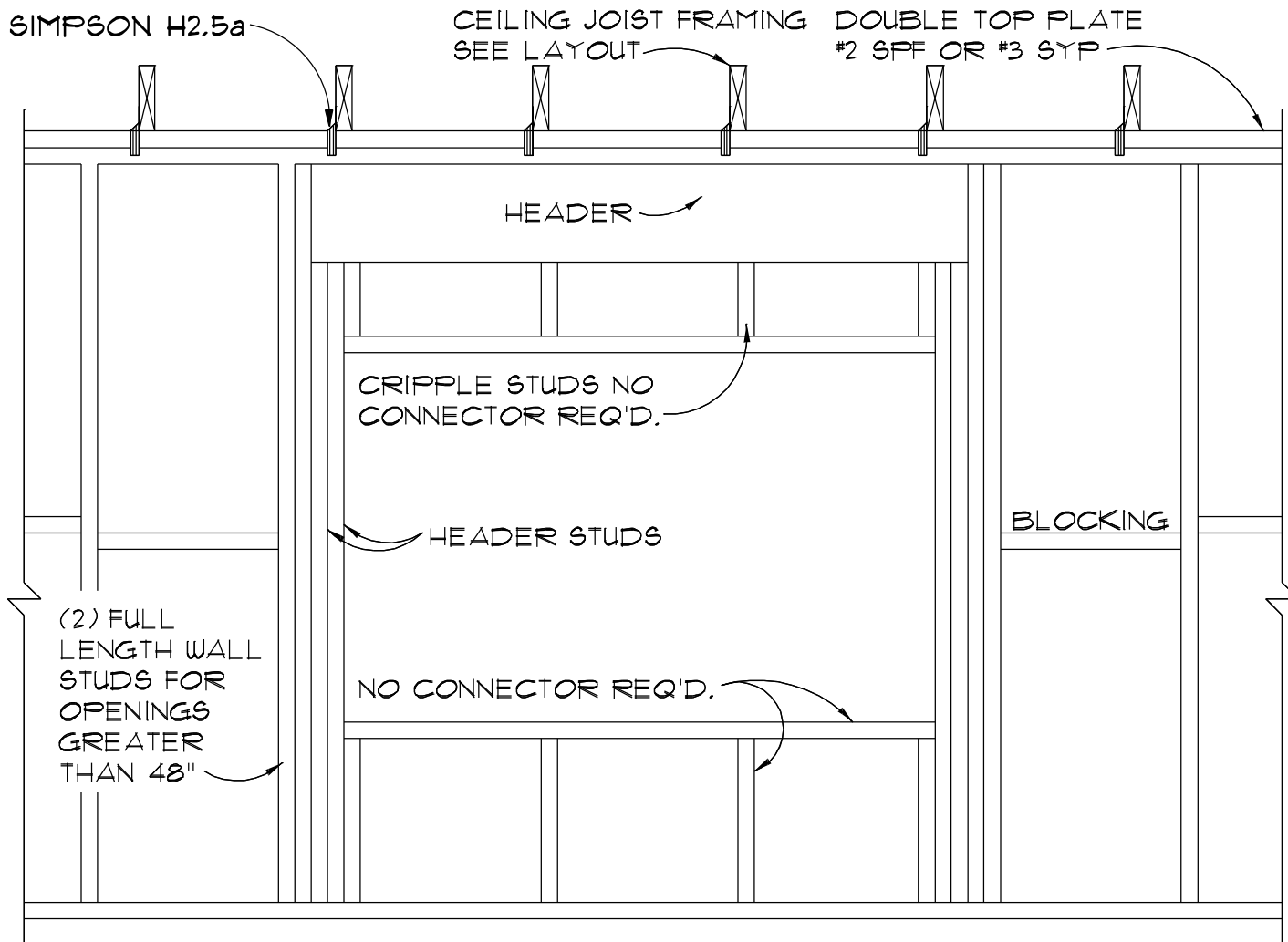
DOUBLE 2x8 No.2 SOUTHERN PINE WITH 1/2" OSB SOLID CONTINUOUS SPACER GLUED AND NAILED WITH 10d x 0.128" x 3" NAILS IN 2 ROWS @ 12" O.C. STAGGERED EACH SIDE WITH 1 - HEADER STUD AND 1 FULL HEIGHT STUDS EACH SIDE OF OPENING

6'-0" UP TO 9'-0" OPENINGS

DOUBLE 2x12 No.2 SOUTHERN PINE WITH 1/2" OSB SOLID CONTINUOUS SPACER GLUED AND NAILED WITH 10d x 0.128" x 3" NAILS IN 2 ROWS @ 12" O.C. STAGGERED EACH SIDE WITH 1 - HEADER STUD AND 2 FULL HEIGHT STUDS EACH SIDE OF OPENING

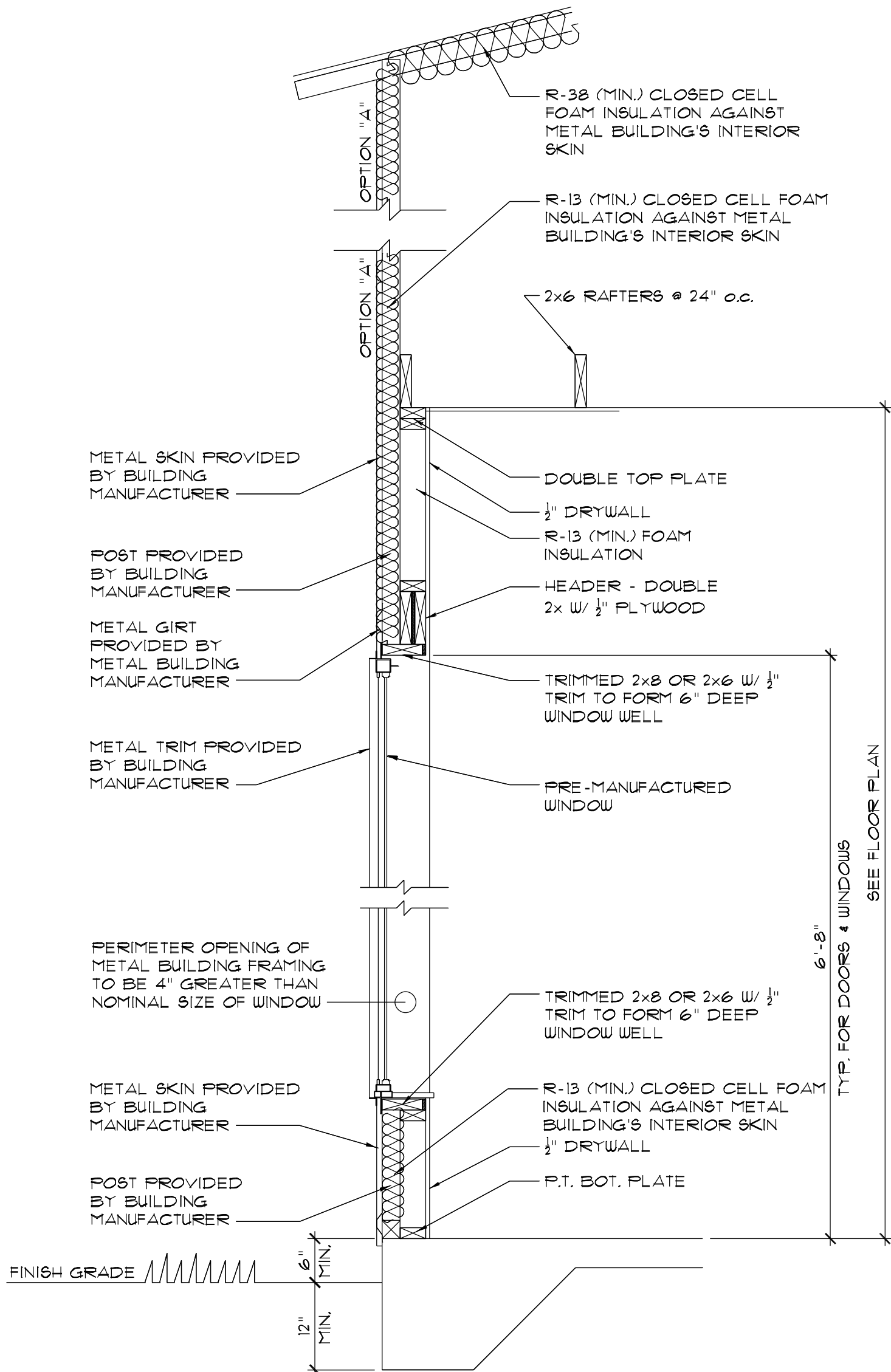
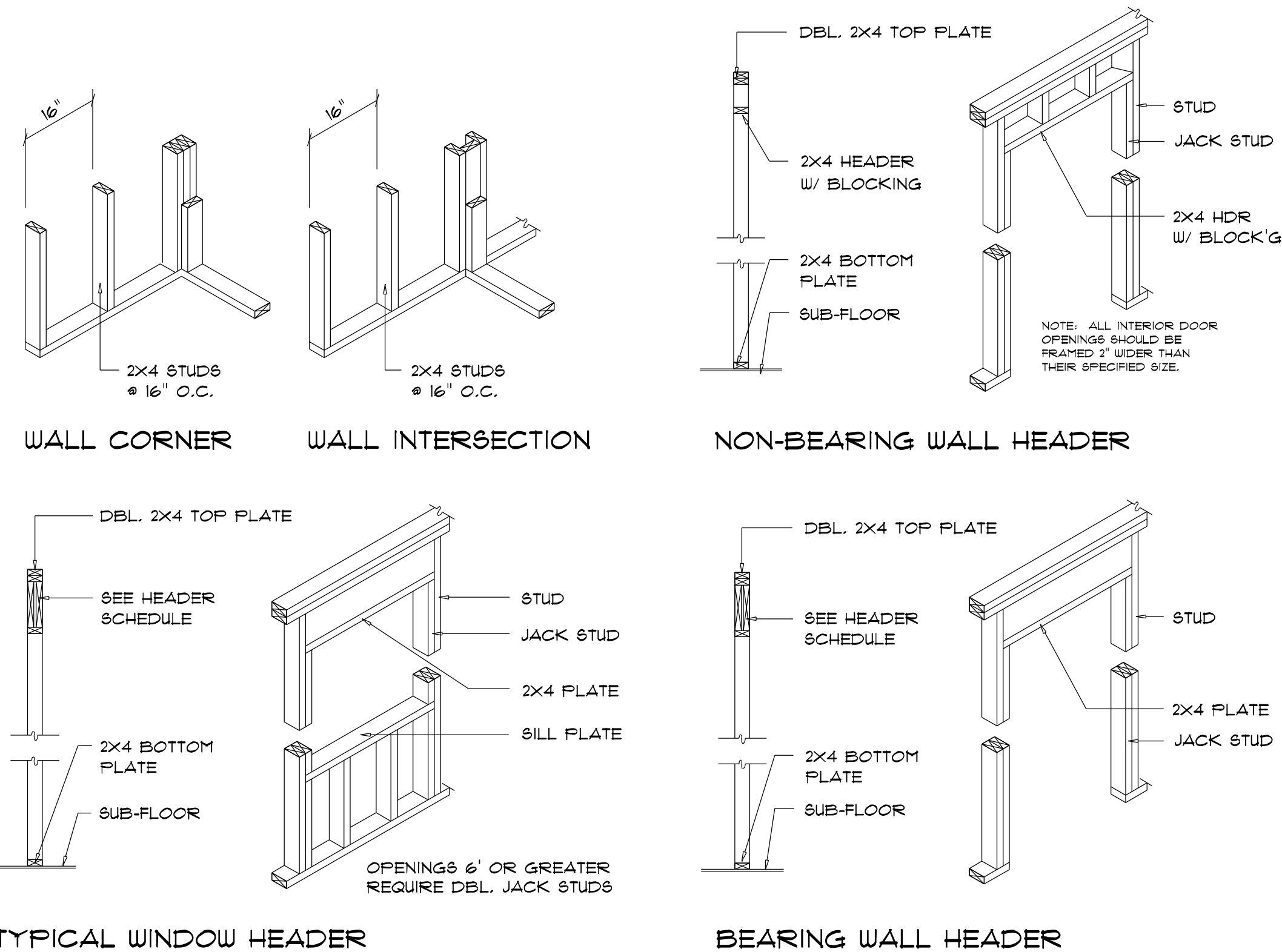
9'-0" UP TO 16'-0" OPENINGS

DOUBLE 2x12 No.2 SOUTHERN PINE WITH 1/2" OSB SOLID CONTINUOUS SPACER GLUED AND NAILED WITH 10d x 0.128" x 3" NAILS IN 2 ROWS @ 12" O.C. STAGGERED EACH SIDE WITH 2 - HEADER STUDS 3 FULL HEIGHT STUDS EACH SIDE OF OPENING



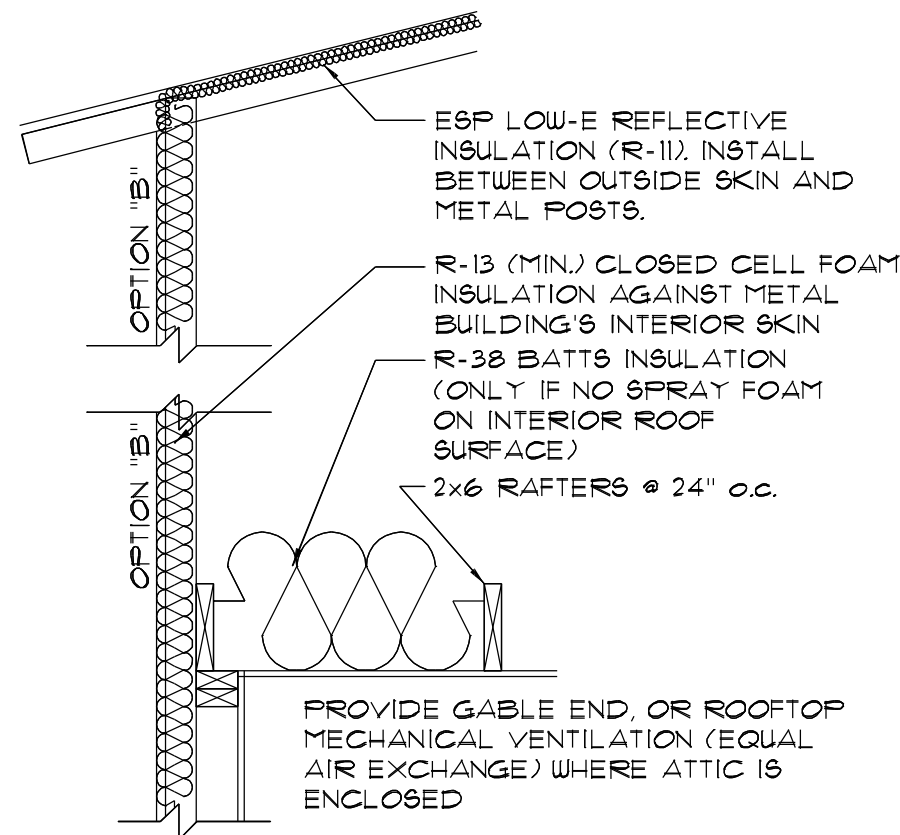
BEARING WALL FRAMING

SCALE: 3/4" = 1'-0"



TYPICAL WALL SECTION

SCALE: 3/4" = 1'-0"



OPTIONAL CLG INSUL.

REVISIONS SCHEDULE	
REVISIONS	May 6th, 2024
REVISIONS	May 30th, 2024

A BARNDOMINIUM FOR
STILWELL RESIDENCE
COLUMBIA COUNTY, FLORIDA

RIDGEPOINT DESIGN
566 SW ARLINGTON BLVD. STE 101, LAKE CITY, FL 32825
P: 386-288-1188
E: RIDGEPOINTDESIGN@GMAIL.COM

NICHOLAS PAUL GEISLER ARCHITECT
N.C.A.R.E. Certified
N. P. GEISLER
R
AR0007005
Digitally signed by: N. P. GEISLER
DN: CN = N. P. GEISLER, email = ngeisler47@gmail.com, c = US, o = ARCHITECT, ou = AR0007005
Date: 2024.08.07 11:42:25 -05'00'

SHEET NUMBER
A.5
OF 6 SHEETS