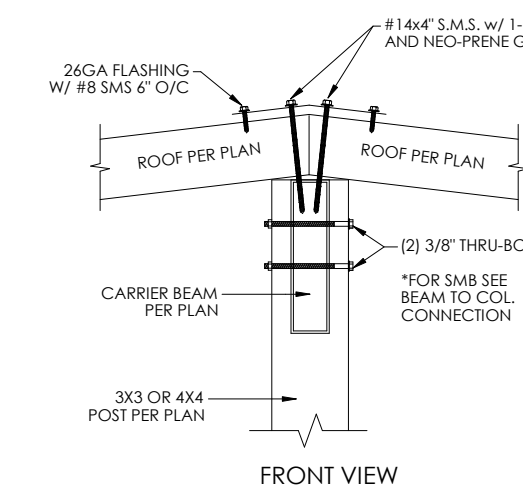
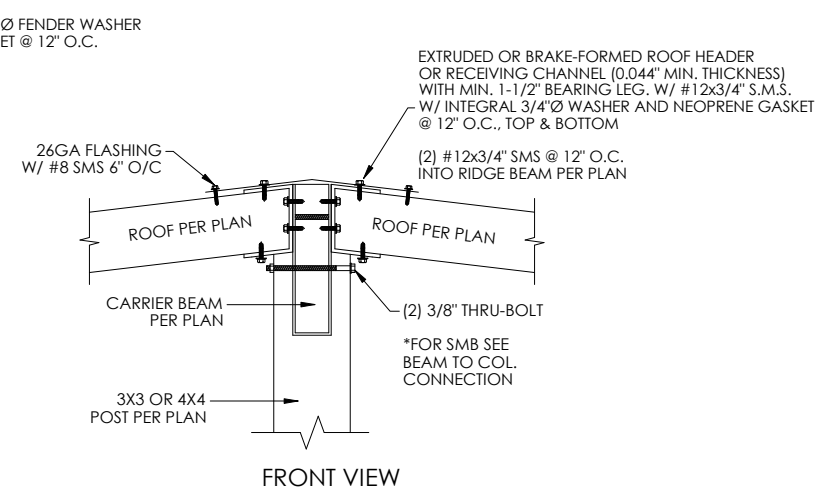


NON-IMPACT INSULATED WALL TO MASONRY/ ALUMINUM DETAIL CONNECTION SCALE: N.T.S.

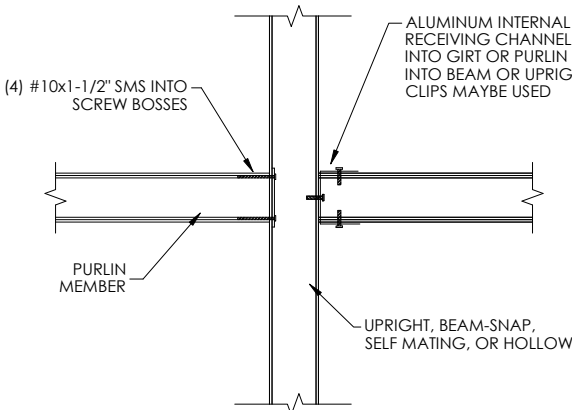


ROOF PANEL TO BEAM OPTION #1 CONNETION DETAIL SCALE: N.T.S.

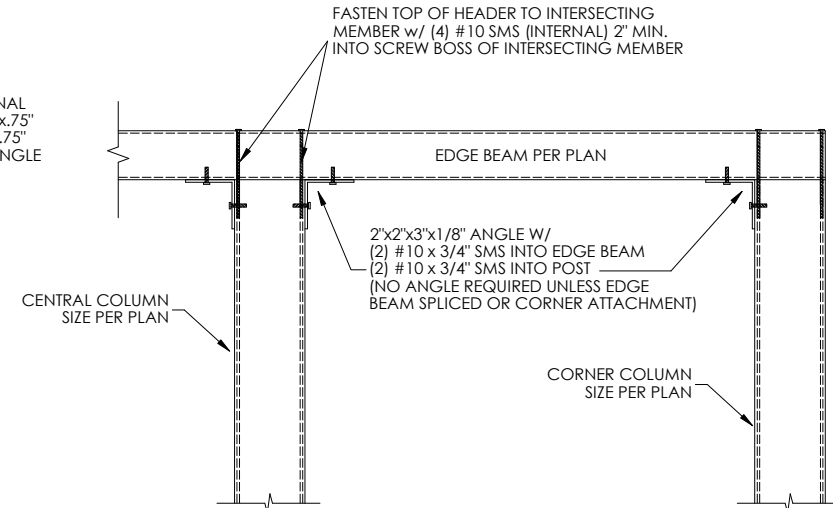


ROOF PANEL TO BEAM OPTION #2 CONNETION DETAIL SCALE: N.T.S.

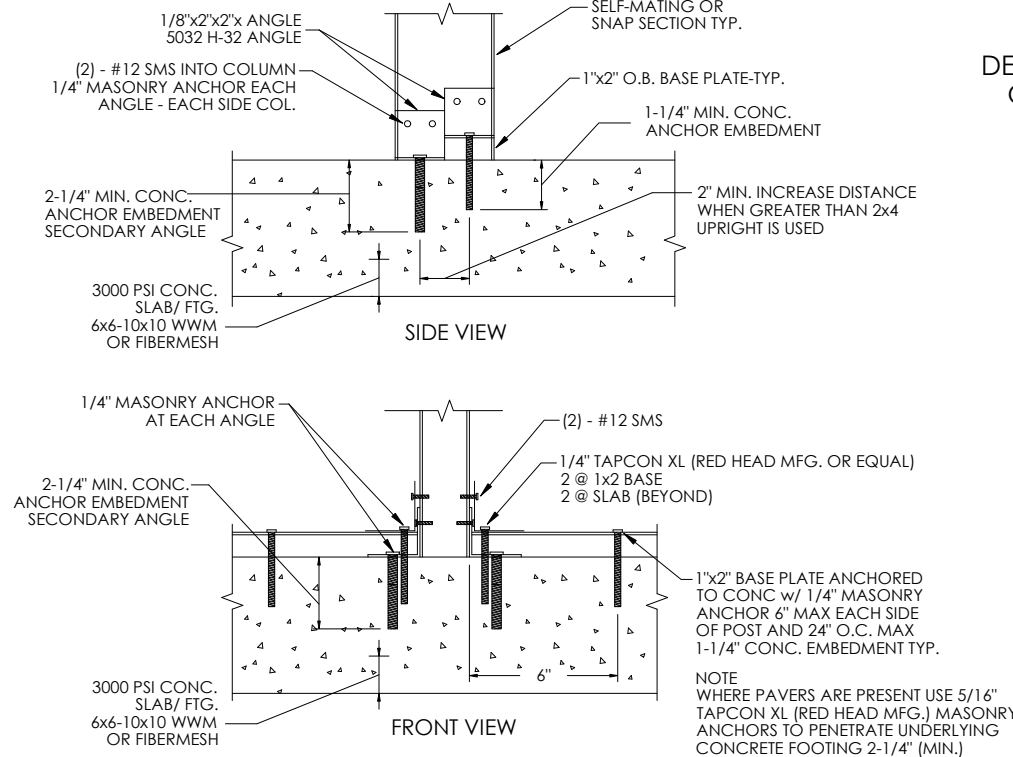
This item has been electronically signed and sealed by Craig E. Gunderson, P.E. on date below using a Digital Signature. Printed copies of this document are not considered signed and sealed and the signature must be verified on any electronic copies.



DETAIL "C" - GIRT OR PURLIN TO BEAM OR POST DETAIL SCALE: NTS

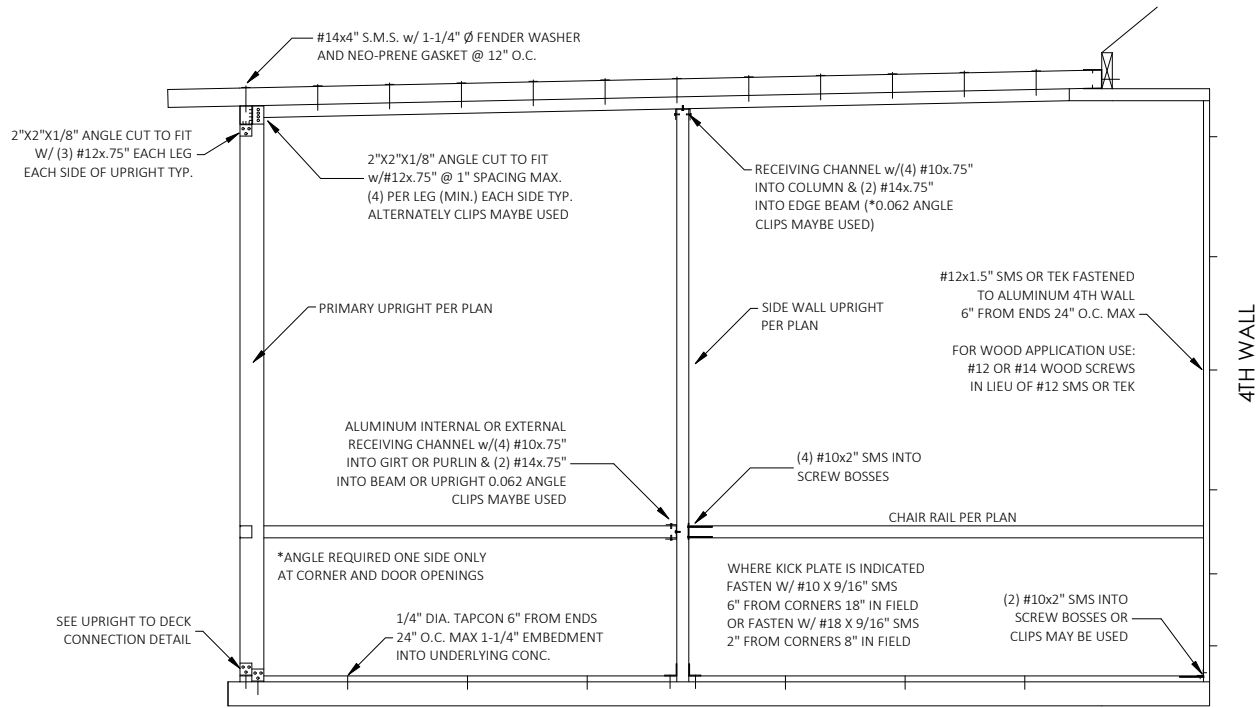


2X3/ 2X4 COL. TO 2X3/ 2X4 EDGE BEAM CONNECTION SCALE: N.T.S.



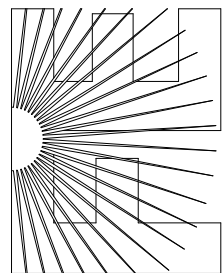
DETAIL "B" - 2"x4" OR LARGER SELF MATING UPRIGHT TO DECK DETAILS SCALE: NTS

ANCHORING UPRIGHT TO FOUNDATION NOTES:
1.- IF PAVERS ARE PRESENT, CONCRETE ANCHORS SHALL PENETRATE INTO FOOTING 2-1/4" MIN. (TYP.)
2.- WHEN FASTENING TO WOOD USE 1/4" GALV. LAG SCREW IN LIEU OF CONC. ANCHORS AND ENSURE 2-1/4" MIN. PENETRATION INTO STRUCTURAL FRAMING BENEATH (TYP.)
3.- NO SECONDARY ANGLE REQUIRED FOR 2X3 UPRIGHTS OR DOOR JAMBS.



SCREEN ROOM END WALL DETAIL SCALE: N.T.S.

FLORIDA ENGINEERING LLC
4161 TAMiami TRAIL, UNIT 101
PORT CHARLOTTE, FLORIDA 33952
(941) 391-5980
www.flengineeringllc.com



CA CERT. #30782

PROJECT NO. 2211644-2

CONTRACTOR:
AMERICAN GUTTER

PROJECT ADDRESS:
PRIESTER
515 SW OLD LAKE CITY TER,
HIGH SPRINGS FL 32655

DESIGN DATE: 04/28/2022

REVISION 1: 05/23/2022

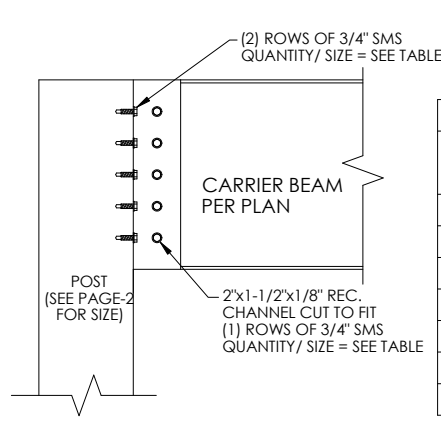
REVISION 2: DATE

DRAWN BY: RJ

SCALE: NTS

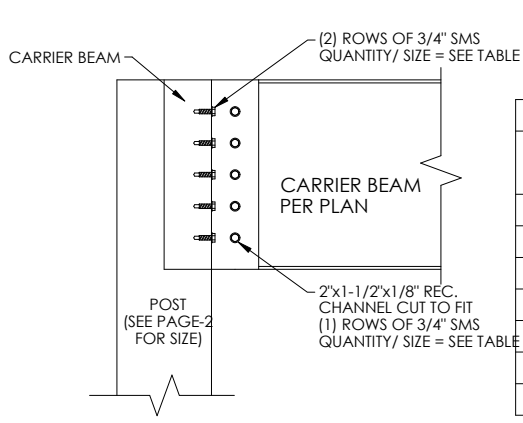
SHEET:

04



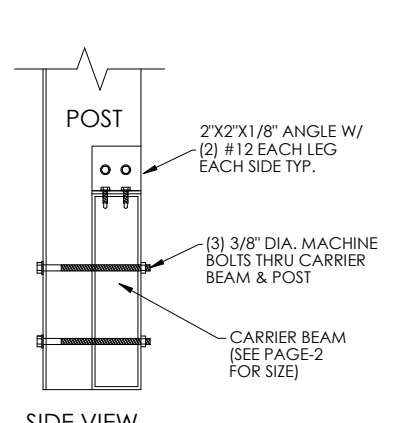
**MAY USE: (2) 3/8" DIA. MACHINE BOLTS THRU REC. CHANNEL & POST IN LIEU OF #14 SMS

BEAM TO COLUMN w/ RECEIVER TABLE		
BEAM SIZE	QUANTITY/ SIZE LEG TO BEAM E/S	QUANTITY/SIZE TO COL. INTERNAL
2X4	(4) #12 - (2) #16	(8) #12 - (3) #16
2X5	(5) #12 - (3) #16	(10) #12 - (3) #16
2X6	(5) #12 - (3) #16	(10) #12 - (4) #16
2X7	(6) #14 - (4) #16	(12) #14 - (4) #16
2X8	(7) #14 - (4) #16	(12) #14 - (6) #16
2X9	(8) #14 - (5) #16	(14) #14 - (6) #16
2X10	(9) #14 - (6) #16	(14) #14 - (7) #16



**MAY USE: (2) 3/8" DIA. MACHINE BOLTS THRU REC. CHANNEL & POST IN LIEU OF #14 SMS

BEAM TO COLUMN w/ RECEIVER TABLE		
BEAM SIZE	QUANTITY/ SIZE LEG TO BEAM E/S	QUANTITY/SIZE TO COL. INTERNAL
2X4	(4) #12 - (2) #16	(8) #12 - (3) #16
2X5	(5) #12 - (3) #16	(10) #12 - (3) #16
2X6	(5) #12 - (3) #16	(10) #12 - (4) #16
2X7	(6) #14 - (4) #16	(12) #14 - (4) #16
2X8	(7) #14 - (4) #16	(12) #14 - (6) #16
2X9	(8) #14 - (5) #16	(14) #14 - (6) #16
2X10	(9) #14 - (6) #16	(14) #14 - (7) #16

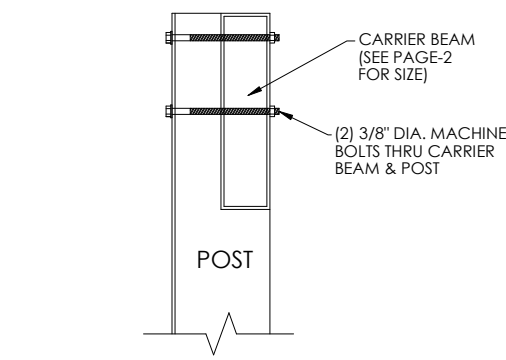


This item has been electronically signed and sealed by Craig E. Gunderson, P.E. on date below using a Digital Signature. Printed copies of this document are not considered signed and sealed and the signature must be verified on any electronic copies.

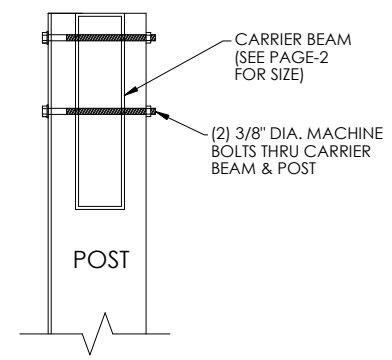
BEAM TO COLUMN CONNECTION
DETAIL SCALE: N.T.S.

BEAM TO CARRIER BEAM
CONNECTION DETAIL SCALE: N.T.S.

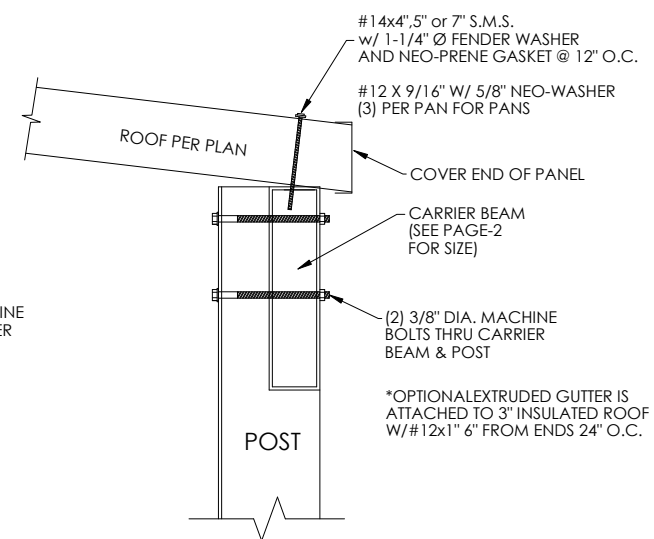
POST TO BEAM CONNECTION
OPTION #1 SCALE: N.T.S.



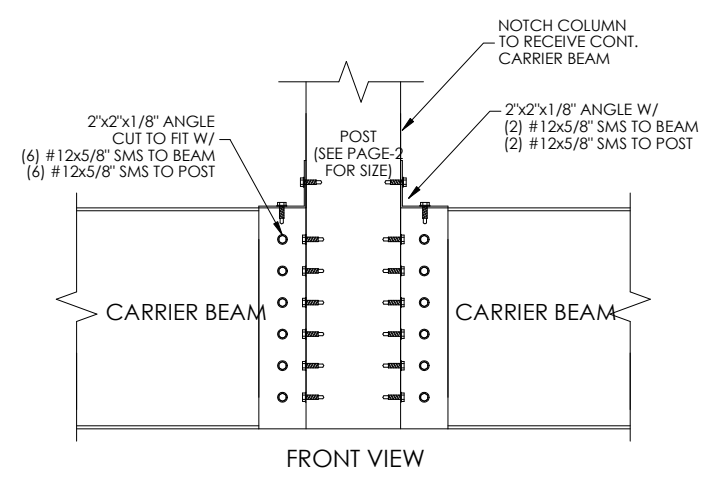
BEAM TO POST CONNECTION
OPTION #1 SCALE: N.T.S.



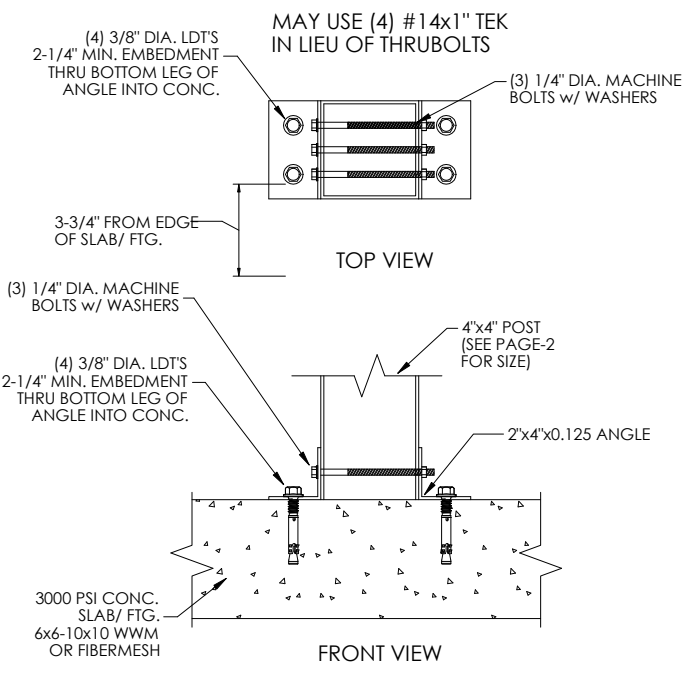
BEAM TO POST CONNECTION
OPTION #2 SCALE: N.T.S.



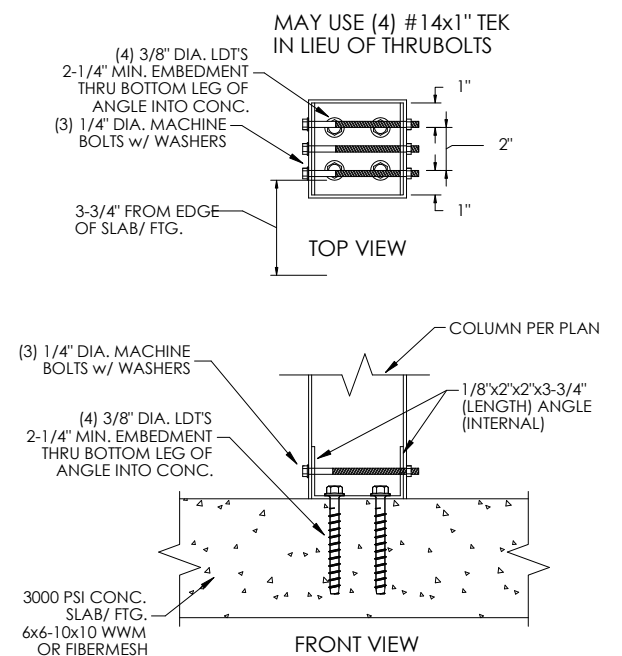
POST TO CARRIER BEAM
CONNECTION SCALE: N.T.S.



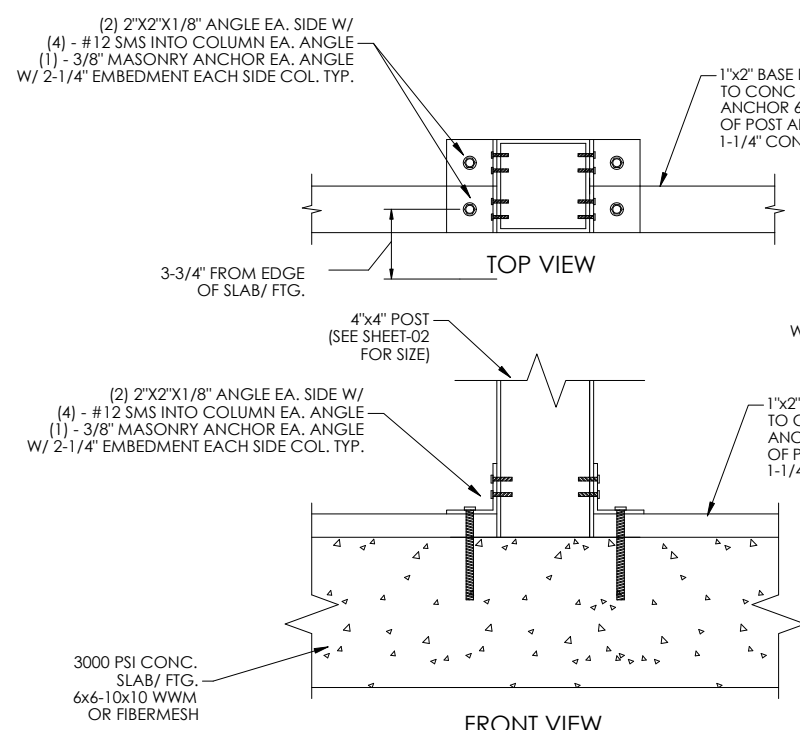
POST TO BEAM CONNECTION
OPTION #2 SCALE: N.T.S.



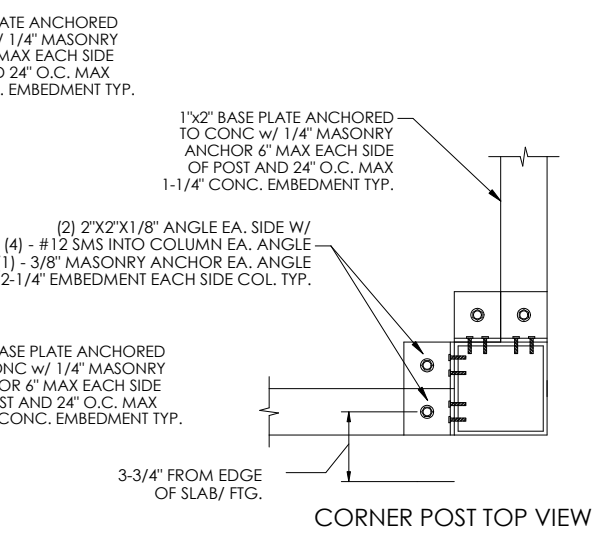
4X4 COLUMN ALT. BASE ATTACHMENT
DETAIL SCALE: NTS



4"x4" POST CONNECTION DETAIL
SCALE: NTS

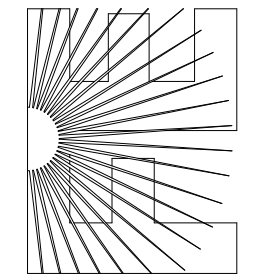


4X4 POST CONNECTION DETAIL
SCALE: NTS



4X4 CORNER POST CONNECTION DETAIL
SCALE: NTS

FLORIDA ENGINEERING LLC
4161 TAMiami TRAIL, UNIT 101
PORT CHARLOTTE, FLORIDA 33952
(941) 391-5980
www.flengineeringllc.com

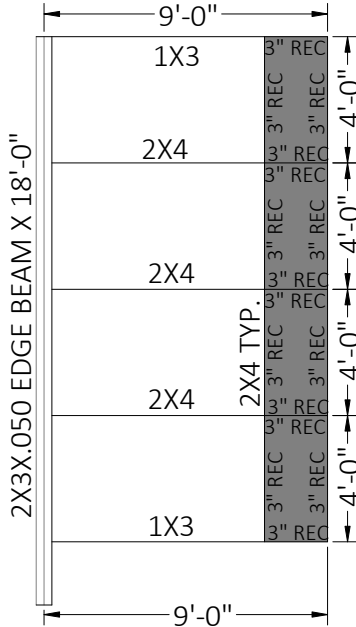
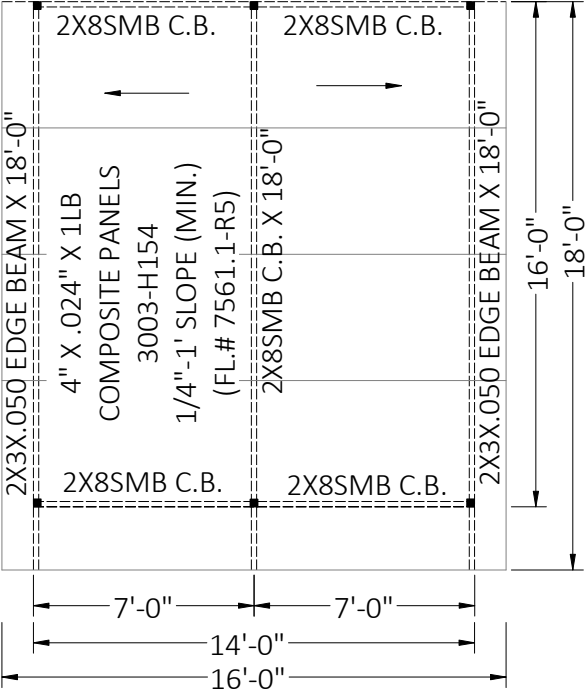
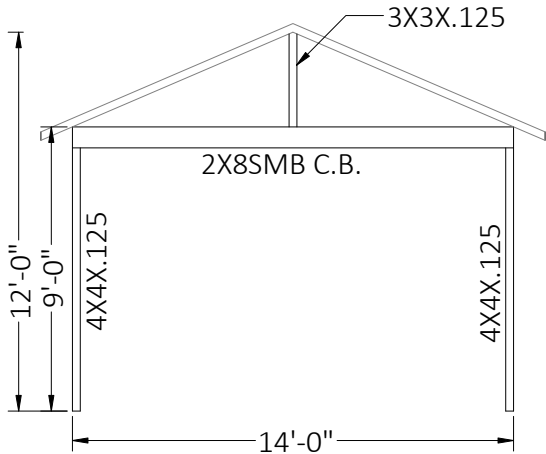
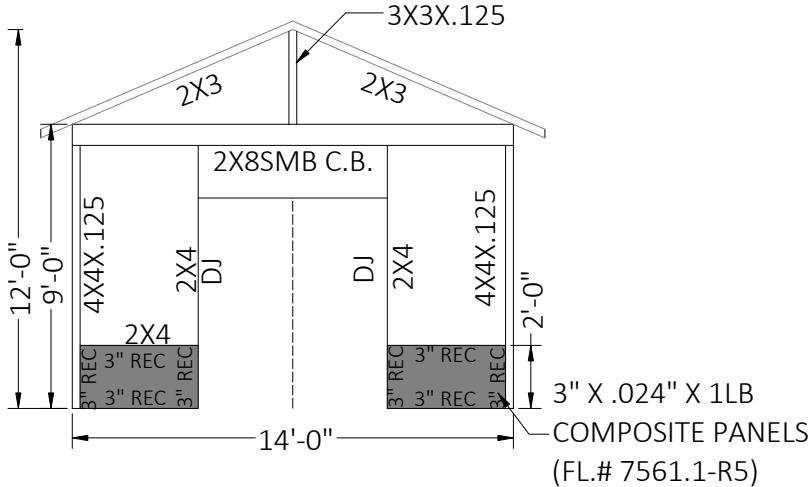
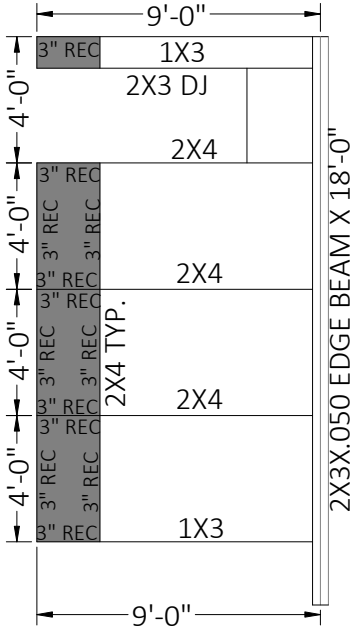


CONTRACTOR:
AMERICAN GUTTER

PROJECT ADDRESS:
PRIESTER
515 SW OLD LAKE CITY TER,
HIGH SPRINGS FL 32655

DESIGN DATE:		04/28/2022
REVISION 1:		05/23/2022
REVISION 2:	DATE	SHEET: 03
DRAWN BY:	RJ	
SCALE:		NTS

PROJECT NO. 2211644-2
CA CERT. #30782



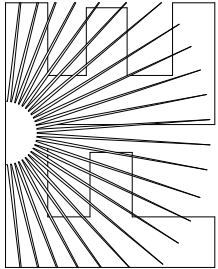
■ = 4X4X.125

ALUMINUM SPECIFICATIONS

1. ALUMINUM EXTRUSIONS SHALL BE 6005 T5 ALLOY UNLESS OTHERWISE NOTED.
2. ALL SELF MATING BEAM SECTIONS ARE TO BE STITCHED WITH #12 SCREWS 6" FROM ENDS & 24" CENTER TO CENTER. #10 SCREW 6" FROM ENDS & 12" CENTER TO CENETER.
3. THE MINIMUM NORMAL THICKNESS OF PROTECTOR PANELS (KICKPLATES) SHALL BE AN INDUSTRY STANDARD OF 0.024 INCHES.
4. VINYL AND ACRYLIC PANELS SHALL BE REMOVED WHEN WIND SPEEDS EXCEED 75 MPH PER FBC.
5. SCREEN MATERIAL SHALL BE 18/14 SCREEN UNLESS APPROVED BY FLORIDA ENGINEERING LLC.
6. 1"X2" & 1"X3" NON STRUCTURAL MEMBERS MAY BE USED INTERCHANGEABLY.
7. DOOR LOCATION MAY BE RELOCATED BY CONTRACTOR IN THE FIELD.
8. INSULATED PANEL OVERHANG PER PRODUCT APPROVAL 36" (MAX.) AT FRONT, 25% OF LAST PANEL WIDTH ALONG SIDES, TYP.

This item has been electronically signed and sealed by Craig E. Gunderson, P.E. on date below using a Digital Signature. Printed copies of this document are not considered signed and sealed and the signature must be verified on any electronic copies.

CONTRACTOR: AMERICAN GUTTER		PROJECT ADDRESS: PRIESTER 515 SW OLD LAKE CITY TER, HIGH SPRINGS FL 32655	
DESIGN DATE:		04/28/2022	
REVISION 1:		05/23/2022	
REVISION 2:	DATE	SHEET: 02	
DRAWN BY:	RJ		
SCALE:	NTS		



FLORIDA ENGINEERING LLC
4161 TAMiami TRAIL, UNIT 101
PORT CHARLOTTE, FLORIDA 33952
(941) 391-5980
www.flengineeringllc.com

PROJECT NO. 2211644-2

CA CERT. #30782

DESIGN CRITERIA:

APPLICABLE CODES, REGULATIONS & STANDARDS

1. THE 2020 FLORIDA BUILDING CODE, SPECIFICALLY CHAPTER 16 STRUCTURAL DESIGN, CHAPTER 20 ALUMINUM & CH. 23 WOOD.
2. AA ASM 35 & SPECIFICATIONS FOR ALUMINUM STRUCTURES, PART 1-A OF THE ALUMINUM DESIGN MANUAL PREPARED BY THE ALUMINUM ASSOCIATION, INC. WASHINGTON D.C. 2005 ED.
3. ASCE 7-16 & SE17
4. NDS NATIONAL DESIGN SPECIFICATION FOR WOOD.
5. ACI318 CONCRETE REFERENCE MANUAL.

WIND LOADS

1. BUILDING OCCUPANCY CATEGORY, PARAGRAPH 1604.5 & TABLE 1604.5: RISK CATEGORY 1.
2. BASIC WIND SPEED, TABLE 1609C, STATE OF FLORIDA DEBRIS REGION & BASIC WIND SPEED, PARAGRAPH 1609.3.1 & TABLE 1609.3.1 EQUIVALENT BASIC WIND SPEED: 120 MPH EXPOSURE CATEGORY, PARAGRAPH 1609.4.3: C
3. WIND LOADS PER FBC TABLE 2002.4 (MWFRS) VULT = 120 MPH & EXPOSURE = C

FOR 20 X 20 X 0.013" MESH SCREEN
HORIZONTAL PRESSURES ON WINDWARD SURFACES = 28 PSF
HORIZONTAL PRESSURES ON LEEWARD SURFACES = 22 PSF
VERTICAL PRESSURES ON SCREEN SURFACES = 8 PSF
VERTICAL PRESSURES ON SOLID SURFACES = 23 PSF

FOR 18 X 14 X 0.013" MESH SCREEN, APPLIED FACTOR = .88
FOR ALLOWABLE STRESS DESIGN, APPLIED FACTOR = .6

FOUNDATION DESIGN

EXISTING APPROVED 8"x8" FOOTER W/ (1) #5 REBAR W/ 4" SLAB 3000 PSI W/ FIBERMESH.

MISCELLANEOUS

1. SCREENED ENCLOSURES CONTAINING SWIMMING POOLS SHALL COMPLY WITH THE APPLICABLE REQUIREMENTS OF FBC R4501.17 RESIDENTIAL SWIMMING BARRIER REQUIREMENTS.
2. ALUMINUM ADDITIONS ARE NOT TO BE INSTALLED ON A MANUFACTURED HOME, TRAILER HOME, OR PRE-FAB HOME. IF THE EXISTING STRUCTURE IS ONE OF THESE, A SEPARATE 4TH WALL SUPPORT SYSTEM IS SO TO BE ENGINEERED SO THAT NO ADDITIONAL LOADING IS PLACED ON THE MANUFACTURED HOME.

FASTENER SPECIFICATIONS

1. FASTENERS ARE REQUIRED TO BE SAE GRADE 2 OR BETTER ZINC PLATED. (CONCRETE ANCHORS ARE TO BE TAPCONS OR BETTER, INSTALLED TO MFG. SPECIFICATIONS)
2. IT IS THE OWNERS RESPONSIBILITY TO MAINTAIN THE SCREENS, FASTENERS AND SCREENS TO MANUFACTURING SPECIFICATIONS.
3. WHERE WOOD DECK IS PRESENT USE 1/4" X 3-1/2" GALV. LAG SCREWS IN LIEU OF MASONRY ANCHORS. UNLESS OTHERWISE SPECIFIED.
4. 1"x2" NON STRUCTURAL MEMBERS ATTACHED TO HOST
 - A. FOR MASONRY/CONCRETE APPLICATION USE GALVANIZED 1/4" X 2-3/4" TAPCONS OR EQUAL AT 24" O.C. AND 6" FROM ENDS
 - B. FOR WOOD APPLICATION USE #14 X 2-3/4" WOOD SCREW AT 24" O.C. AND 6" FROM ENDS.
 - C. FOR ALUMINUM APPLICATION USE #10 X 1-1/2" SMS OR TEK SCREW AT 24" O.C. AND 6" FROM ENDS
 - D. WHERE 1"x2" INSTALLED THROUGHOUT AN "OPEN VIEW" SPACING SHALL BE REDUCED TO 18" O.C. AND 6" FROM ENDS

RESPONSIBILITIES

1. ALL SITE WORK SHALL BE PERFORMED BY A LICENSED CONTRACTOR IN ACCORDANCE WITH APPLICABLE BUILDING CODES, LOCAL ORDANANCES, AND THE ENGINEER SHALL BE NOTIFIED OF ANY DISCREPANCIES.
2. FOR FASTENERS WHICH ARE NOT VISIBLE AFTER INSTALLATION, THE CONTRACTOR SHALL VERIFY AND ENSURE INSTALLATION HAS BEEN ACCOMPLISHED IN ACCORDANCE WITH MANUFACTURERS SPECIFICATIONS AND IN ACCORDANCE WITH THE ATTACHED DETAILS.
3. FOR "PICTURE WINDOW" MODIFICATION TO EXISTING SCREEN ENCLOSURES, ALL OTHER "EXISTING SCREEN ENCLOSURE" FEATURES ARE TO MEET THE TYPICAL DETAILS AS PROVIDED IN THESE DETAILS. CONTRACTOR IS TO VERIFY & ASSURE EXISTING SCREEN ENCLOSURE IS STRUCTURALLY SOUND.
4. CONTRACTOR TO PROVIDE NOA'S & INSTALL ALL MATERIALS AS PER MANUFACTURER'S SPECIFICATIONS.
5. INTEGRITY OF EXISTING/ HOST STRUCTURE SHALL NOT BE COMPROMISED WITH THE ATTACHMENT OF THE PROPOSED STRUCTURE.

SHEET NO.	DRAWING INDEX
S/01	GENERAL NOTES
S/02	PLAN/ ELEVATIONS
S/03	DETAILS
S/04	DETAILS

ALUMINUM MEMBERS DIMENSIONS

HOLLOW SECTIONS

2 x 2: 2"x2"x0.044"
2 x 3: 2"x3"x0.050"
2 x 4: 2"x4"x0.050"
2 x 5: 2"x5"x0.050"

OPEN BACK SECTIONS

1 x 2: 1"x2"x0.044"
1 x 3: 1"x3"x0.045"

SNAP SECTIONS

2 x 2 SNAP: 2"x2"x0.045"
2 x 3 SNAP: 2"x3"x0.050"
2 x 4 SNAP: 2"x4"x0.045"

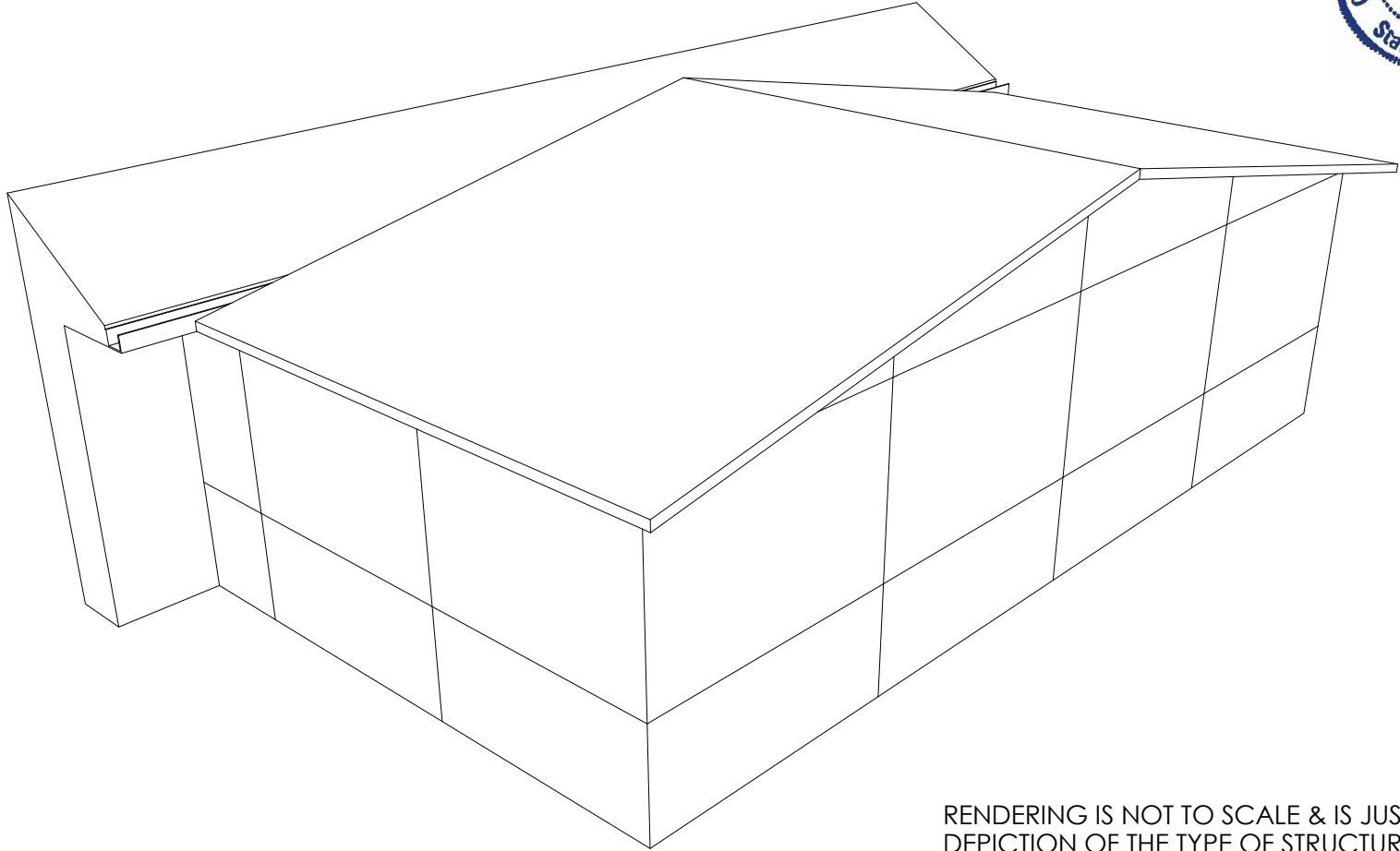
SELF MATING (SMB)

2 x 4 SMB: 2"x4"x0.044"x0.100"
2 x 5 SMB: 2"x5"x0.050"x0.100"
2 x 6 SMB: 2"x6"x0.050"x0.120"
2 x 7 SMB: 2"x7"x0.057"x0.120"
2 x 8 SMB: 2"x8"x0.072"x0.124"
2 x 9 SMB: 2"x9"x0.082"x0.124"
2 x 10 SMB: 2"x10"x0.092"x0.398"

DETAIL A



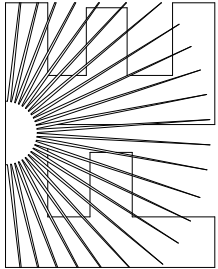
This item has been electronically signed and sealed by Craig E. Gunderson, P.E. on date below using a Digital Signature. Printed copies of this document are not considered signed and sealed and the signature must be verified on any electronic copies.



RENDERING IS NOT TO SCALE & IS JUST A GENERALIZED DEPICTION OF THE TYPE OF STRUCTURE PROPOSED

NEW GABLE SCREEN ROOM
SEE FOUNDATION DESIGN SHT-01

FLORIDA ENGINEERING LLC
4161 TAMiami TRAIL, UNIT 101
PORT CHARLOTTE, FLORIDA 33952
(941) 391-5980
www.flengineeringllc.com



PROJECT NO. 2211644-2

CA CERT. #30782

CONTRACTOR:
AMERICAN GUTTER

PROJECT ADDRESS:
PRIESTER
515 SW OLD LAKE CITY TER,
HIGH SPRINGS FL 32655

DESIGN DATE: 04/28/2022

REVISION 1: 05/23/2022

REVISION 2: DATE

DRAWN BY: RJ

SCALE: NTS

SHEET:

01