

TABLE 1
BOW/RAFTER FRAME, END POST, GROUND ANCHOR AND PANEL FASTENER SPACING SPECIFICATIONS

RISK CATEGORY	WIND EXPOSURE CATEGORY	ULTIMATE WIND SPEED (MPH)	NOMINAL WIND SPEED (MPH)	MAXIMUM POST / RAFTER SPACING (FEET)	AVERAGE FASTENER ON-CENTERS ALONG R PURLINS, AND POSTS (INCHES)	
					INTERIOR POSTS/RAFTERS	POSTS
I or II	B, C, or D	115 TO 150	89 TO 116	5.0	6	
		151 TO 180	117 TO 139	4.0	6	

NOTES. 1. Specifications applicable to 26 gauge metal panels fastened directly to 12 or 14 gauge steel tube bow frames
2. Fasteners consist of 1/4"-14X1" self-drilling screws with control seal washer
3. Specifications applicable only for mean roof height of 20 feet or less, and roof slopes of 14° (3:12 pitch) Spacing requirements for roof heights and/or slopes may vary.
4. Ground anchor requirements are 1 @ each corner and one every other interior bow/rafter post location, at a maximum of 1C both sides of openings where base rail is absent.
5. Ground anchors are not required with concrete slab construction

APPROVED PRODUCTS LIST			
PRODUCT CATEGORY	SUB CATEGORY	MANUFACTURER	APPROVAL No. & DATE
STRUCTURAL COMPONENTS	ROOF DECK	CAROLINA CARPORTS, INC. 26 Gauge AG Panel	FL6596-R2 10/09/12
STRUCTURAL COMPONENTS	STRUCTURAL WALL	CAROLINA CARPORTS, INC. 26 Gauge AG Panel	FL6702-R2 10/09/12
EXTERIOR DOORS	SWINGING	ELIXIR INDUSTRIES GA Model 402-14	FL1722-R4 03/14/12
EXTERIOR DOORS	ROLL-UP	ASTA INDUSTRIES INC. Model 203	FL8888-R3 04/03/12
WINDOWS <i>N/A</i>	SINGLE HUNG	POCAHONTAS ALUMINUM COMPANY, INC Model 100 VS	FL12940-R1 04/06/12

GENERAL NOTES:

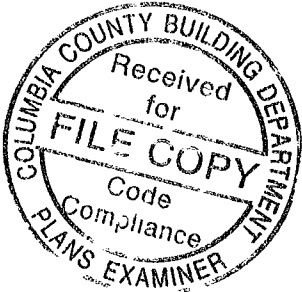
- ALL STEEL TUBING SHALL BE 50 KSI STEEL
- FASTEN METAL ROOF AND WALL PANELS TO FRAMING WITH 1/4" x 1" SELF DRILLING FASTENERS WITH CONTROL SEAL WASHER @ 6" O.C. AVERAGE
- ALL FIELD CONNECTIONS SHALL BE 1/4" x 1" SELF DRILLING SCREWS
- ALL SHOP CONNECTIONS SHALL BE WELDED.
- CONCRETE EXPANSION ANCHORS SHALL BE WEJ-IT ANKR-TITE MODEL AT1252, OR SLEEVE ANCHOR MODEL HSA 1260, OR EQUIVALENT.

METAL CARPORT INSTALLATION PLANS AND DETAILS
AND
FRAMING AND FASTENER SPECIFICATIONS

FOR CONSTRUCTION IN THE
STATE OF FLORIDA

PREPARED FOR
CAROLINA CARPORTS, INC.
P.O. BOX 1263
DOBSON, NORTH CAROLINA 27017

PREPARED BY,
BECHTOL ENGINEERING AND TESTING, INC.
605 WEST NEW YORK AVENUE
DELAND, FLORIDA 32720
Certificate of Authorization No. 00005492

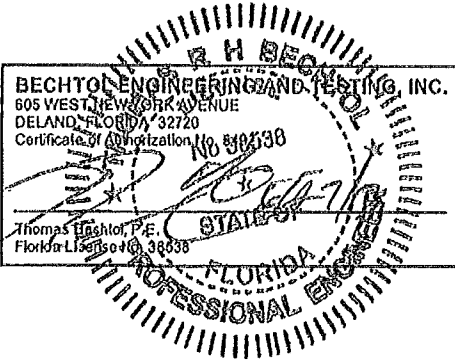


WINDOW AND DOOR NOTE

EXTERIOR WINDOWS AND GLASS DOORS SHALL BE TESTED BY AN APPROVED INDEPENDENT TESTING LABORATORY, AND BEAR AN AAMA OR WDMA OR OTHER APPROVED LABEL IDENTIFYING THE MANUFACTURER, PERFORMANCE CHARACTERISTICS AND APPROVED PRODUCT EVALUATION ENTITY TO INDICATE COMPLIANCE WITH THE REQUIREMENTS OF THE FOLLOWING SPECIFICATION:

ANSI/AAMA/NWWDA 101/IS2 2/97
THE CONSTRUCTION SHALL BE TESTED IN ACCORDANCE WITH ASTM E 330, STANDARD TEST METHODS FOR STRUCTURAL PERFORMANCE OF EXTERIOR WINDOWS, CURTAIN WALLS, AND DOORS BY UNIFORM STATIC AIR PRESSURE.

THIS IS TO CERTIFY THAT THE CALCULATIONS AND SPECIFICATIONS HEREIN HAVE BEEN PREPARED BY THE UNDERSIGNED PROFESSIONAL ENGINEER, AND ARE IN ACCORDANCE WITH THE REQUIREMENTS OF SECTION 1609 OF THE 2010 FLORIDA BUILDING CODE. THE PLANS ARE VALID UNTIL THE NEXT REVISION OF THE FLORIDA BUILDING CODE.

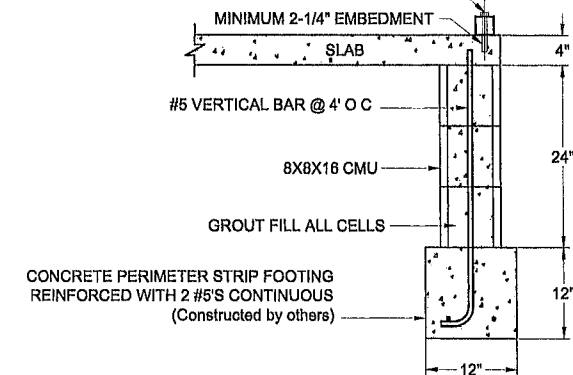


CAROLINA CARPORTS, INC.



FIELD	DATE	6-19-13
SCALE	RR	NTS
PROJ. NO.	TB	G13002
SHEET	TB	SHEET 1 OF 4

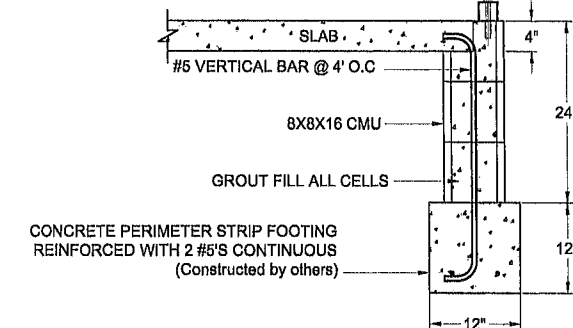
INSTALL 1/2" x 6" EXPANSION ANCHOR THROUGH BASE RAIL WITHIN
6" OF EACH BOW ALONG SIDES OR INSIDE EVERY OTHER END WALL
POST ALONG END WALL SECTIONS



CONCRETE BASE RAIL ANCHORAGE

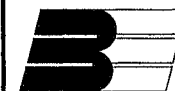
Not To Scale

INSTALL 1/2" x 6" EXPANSION ANCHOR THROUGH BASE RAIL WITHIN
6" OF EACH BOW ALONG SIDES OR INSIDE EVERY OTHER END WALL
POST ALONG END WALL SECTIONS
MINIMUM 2-1/4" EMBEDMENT



CONCRETE BASE RAIL ANCHORAGE

Not To Scale



BECHTOL ENGINEERING
AND TESTING, Inc.

CONSULTING GEOTECHNICAL, ENVIRONMENTAL, AND MATERIALS TESTING ENGINEERS
Certificate of Authorization No. 5492

STRIP FOOTING WITH STEM WALL FOUNDATION

J&B BUILDING SERVICES

FOT THE STATE OF FLORIDA

FIELD:	NA	DATE:	4-25-14
DRAWN:	RR	SCALE:	NOTED
CHECKED:	JP	PROJ. NO.	G14002
APPROVED:	TB		FIGURE 1