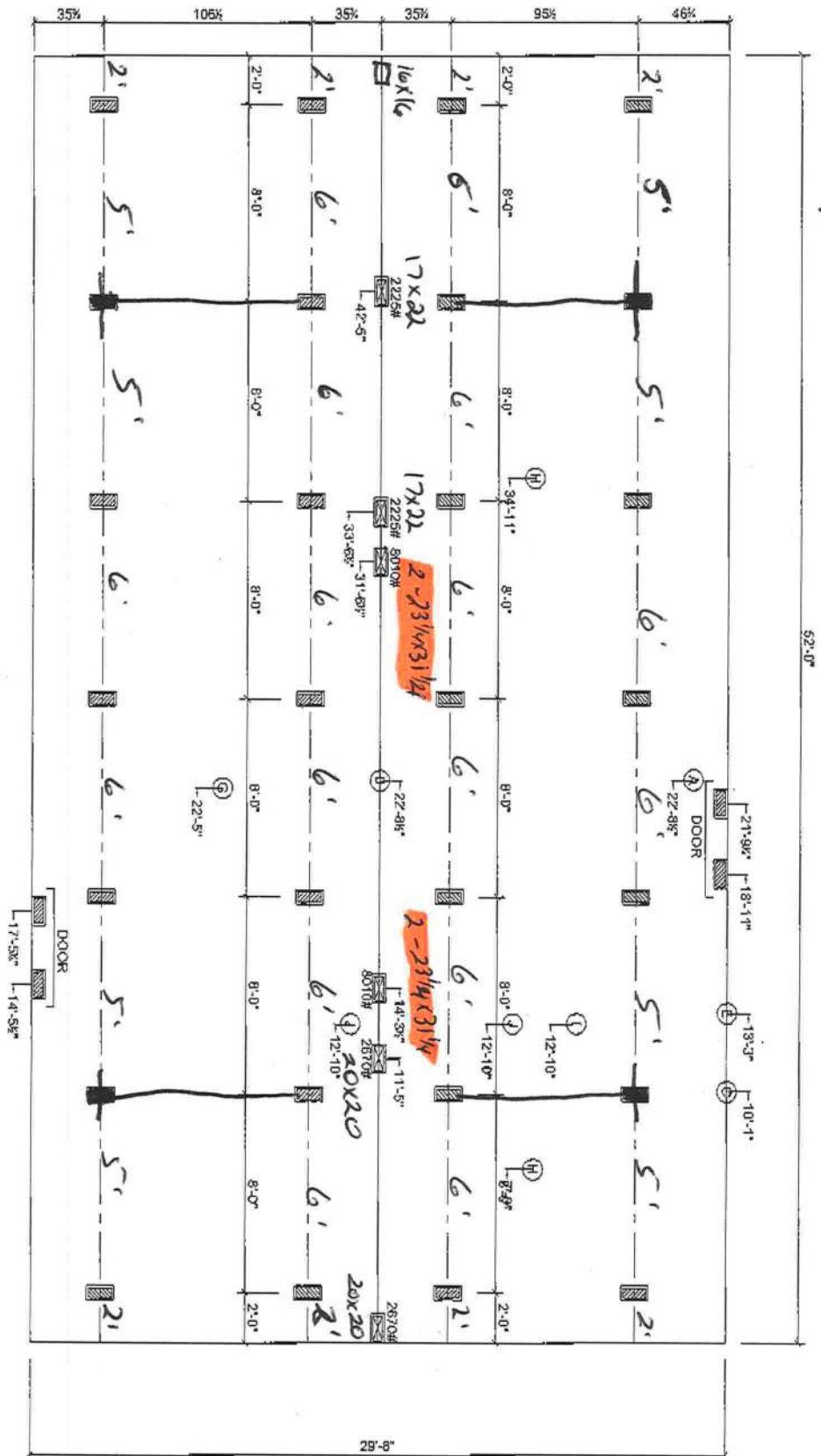


4 1101V All steel foundations from Oliver Technology

64 666



MARRIAGE LINE OPENING SUPPORT PIER/TYP.  
SUPPORT PIER/TYP

2/18/09

FOUNDATION NOTES:

- THIS DRAWING IS DESIGN FOR THE STANDARD WIND ZONE AND IS TO BE USED IN CONJUNCTION WITH THE INSTALLATION MANUAL AND ITS SUPPLEMENTS.  
- FOOTINGS ARE SHOWN FOR EXAMPLE ONLY. QUANTITY AND SPACING MAY VARY BASED ON PAD TYPE, SOIL CONDITION, ETC.  
- FOOTINGS ARE REQUIRED AT SUPPORT POSTS, SEE INSTALLATION MANUAL FOR REQUIREMENTS.

**Live Oak Homes**  
**MODEL: S-3524A - 32 X 52**  
**4-BEDROOM / 2-BATH**

- |                              |   |
|------------------------------|---|
| (A) MAIN ELECTRICAL          | (G) DUCT CROSSOVER                        |
| (B) ELECTRICAL CROSSOVER     | (H) SEWER DROPS                           |
| (C) WATER INLET              | (I) RETURN AIR (W/DPT. HEAT PUMP OH DUCT) |
| (D) WATER CROSSOVER (IF ANY) | (J) SUPPLY AIR (W/DPT. HEAT PUMP OH DUCT) |
| (E) GAS INLET (IF ANY)       |   |
| (F) GAS CROSSOVER (IF ANY)   |   |
- S-3**

S-3524A