



Ajax Building Company, LLC  
10365 Hood Road South  
Suite 203  
Jacksonville, Florida 32257  
Phone: (904) 262-8660

Project: 201807 - Columbia Jail  
385 NW Quinten St  
Lake City, Florida 32055

## Transition Detail at locations where the Cell Footings intersect the Door Wall footing.

<b>TO:</b>	Maida Huber (Dewberry) Richard Novitsky (Dewberry) Brad Ewing (Dewberry) Barry Pujol (Kever McKee Engineering)	<b>FROM:</b>	John Cappadonna (Ajax Building Company, LLC) 10365 Hood Road South Suite 203 Jacksonville, Florida 32257
<b>DATE INITIATED:</b>	12/02/2020	<b>STATUS:</b>	Closed on 12/22/20
<b>LOCATION:</b>		<b>DUE DATE:</b>	12/09/2020
<b>PROJECT STAGE:</b>	Course of Construction	<b>COST CODE:</b>	
<b>COST IMPACT:</b>		<b>SCHEDULE IMPACT:</b>	
<b>DRAWING NUMBER:</b>	S-111	<b>SPEC SECTION:</b>	
<b>LINKED DRAWINGS:</b>		<b>REFERENCE:</b>	
<b>RECEIVED FROM:</b>	John Cappadonna (Ajax Building Company, LLC)		
<b>COPIES TO:</b>			

### Question from John Cappadonna (Ajax Building Company, LLC) at 03:07 PM on 12/02/2020

Please provide detail where cell foundation meets the interior wall footing, see attached sketch SK-RFI-CC-30.

**Attachments:**  
[SK-RFI-CC-30.pdf](#)

**Official Response:** Barry Pujol (Kever McKee Engineering) responded on Friday, December 18th, 2020 at 4:33PM EST

Since the cells are poured first, the cell footing will need to be chamfered in plan view at this corner. The wall footing will then be wide enough to accept the drilled and epoxy dowels from above and keep adequate clearance from the cold joint between the two pours. See attached detail.

**Attachments:**  
[18100 - Columbia Co. Jail - Structural MASTER 100%-RFI CC-30.pdf](#)

### All Replies:

#### Response from Barry Pujol (Kever McKee Engineering) at 04:33 PM on 12/18/2020

Since the cells are poured first, the cell footing will need to be chamfered in plan view at this corner. The wall footing will then be wide enough to accept the drilled and epoxy dowels from above and keep adequate clearance from the cold joint between the two pours. See attached detail.

**Attachments:**  
[18100 - Columbia Co. Jail - Structural MASTER 100%-RFI CC-30.pdf](#)

#### Response from John Cappadonna (Ajax Building Company, LLC) at 09:39 AM on 12/03/2020

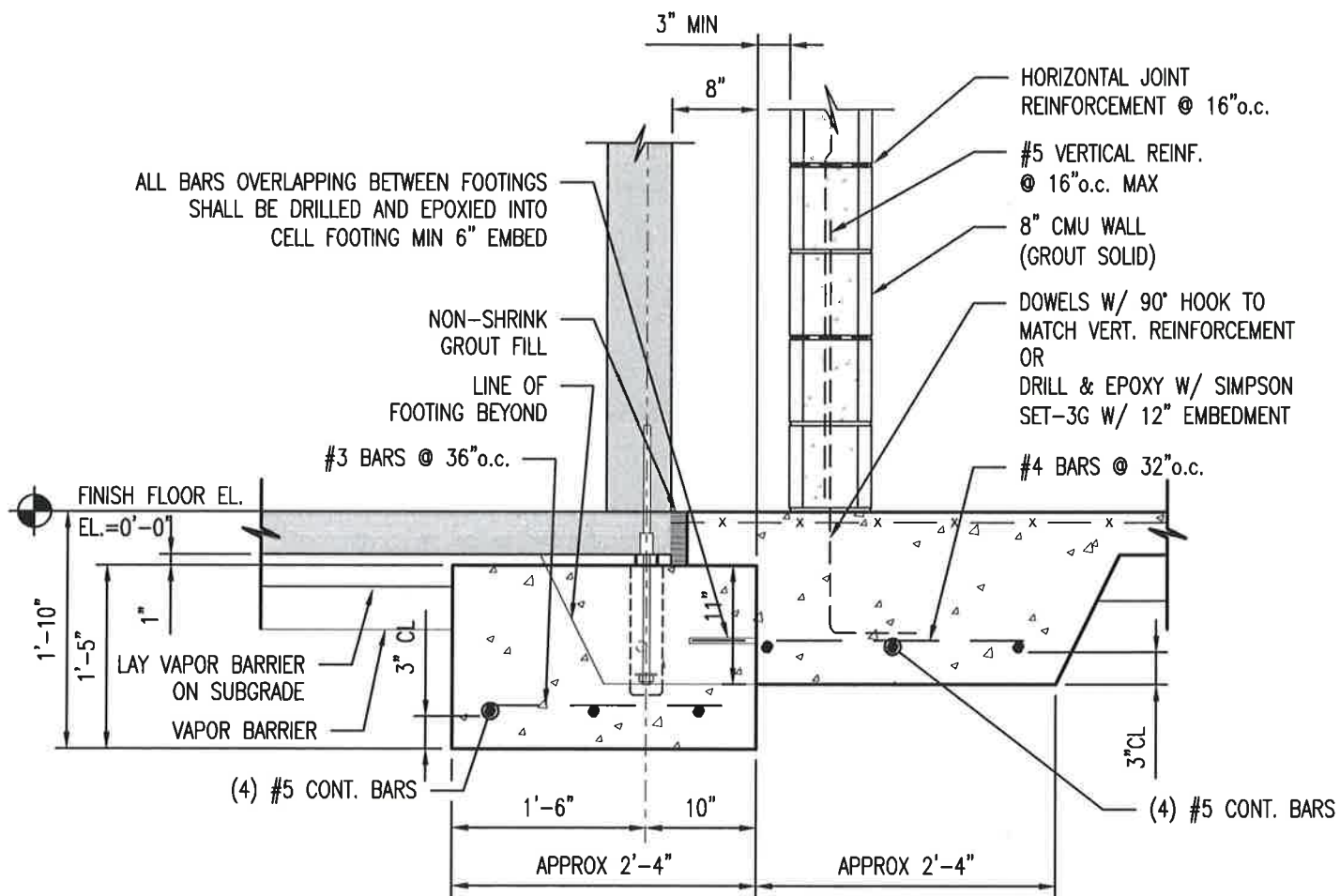
Yes, the cells will be placed before the slab is poured.

**Attachments:**

#### Response from Barry Pujol (Kever McKee Engineering) at 04:19 PM on 12/02/2020

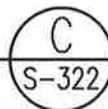
Will the precast cells be set before the slab is poured? The sequence of construction will affect how these two footings tie in together.

**Attachments:**



## FOOTING @ CELL CORNER

SCALE:  $\frac{3}{4}" = 1'-0"$



Project:

Columbia County  
Detention Facility

389 NW Quinten St, Lake City, FL 32055

Drawing:

RFI# CC-30: Footing @ Cell Corner



**KEVER | MCKEE**  
ENGINEERING

1624 Metropolitan Blvd., Ste. A  
Tallahassee, Florida 32308  
Office: 850.727.5367

Drawn: B. Pujol

Checked: B. Pujol

Date: 12.18.2020

Scale: As Shown

Project No.

18100

Drawing No.

SSK-1