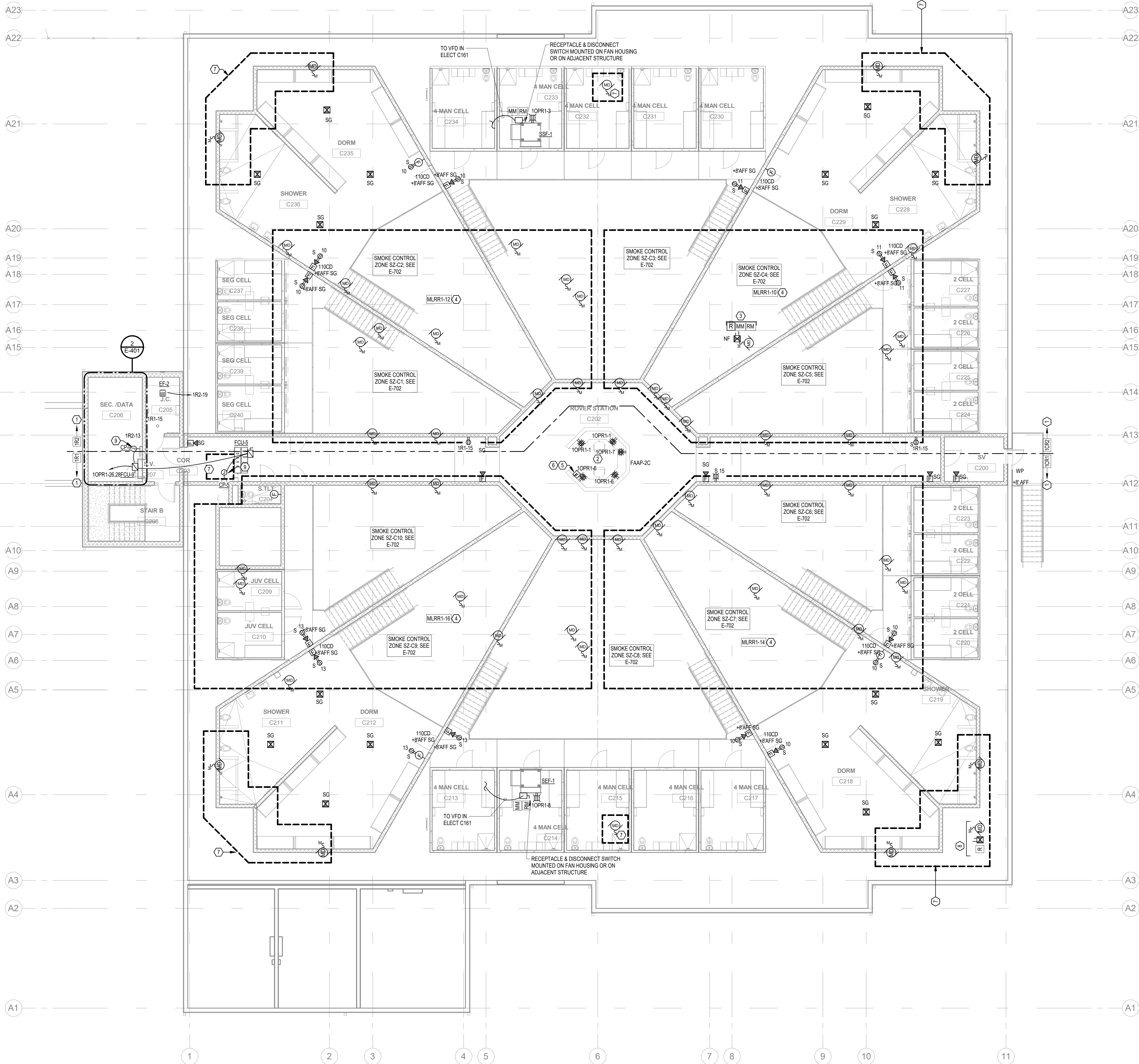
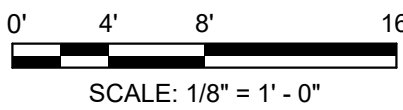


F  
E  
D  
C  
B  
A



1 UPPER TIER POWER & FIRE ALARM PLAN - AREA C  
Scale: 1/8" = 1'-0"



GENERAL NOTES:

1. REFER TO MECHANICAL DRAWINGS FOR EXACT QUANTITY AND LOCATIONS OF DAMPERS ASSOCIATED WITH SMOKE CONTROL SYSTEM LOCATED IN THIS AREA PRIOR TO ROUGH-IN OF ASSOCIATED ELECTRICAL DEVICES.
2. REFERENCE EP-111 FOR AREAS DESIGNATED AS DESIGN ALTERNATES, WHERE ELECTRICAL WORK IS SHOWN IN THESE AREAS, EXCLUDE FROM THESE AREAS AS PART OF DESIGN ALTERNATE PRICING.

PLAN NOTES:

1. CIRCUIT NUMBERS ADJACENT TO DEVICES ON THIS SIDE OF LINE ARE TO PANEL INDICATED UNLESS OTHERWISE NOTED.
2. CONDUIT FOR RECEPTABLES & FIRE ALARM DEVICES TO BE ROUTED IN SLAB BETWEEN LOWER LEVEL AND UPPER LEVEL, AND INTO ADJACENT CHASE AT LOWER LEVEL. SEE EP-111C, STUB UP INTO MILLWORK BEHIND ACCESSIBLE PANEL. COORDINATE WITH MILLWORK SHOP DRAWINGS PRIOR TO ROUGH-IN.
3. PROVIDE POWER & FIRE ALARM DEVICES INDICATED FOR EACH DAMPER ASSOCIATED WITH SMOKE CONTROL SYSTEM. TYPICAL REPRESENTATION IS INDICATED. REFER TO SMOKE CONTROL PLANS M-311C & M-321C FOR EXACT QUANTITY AND LOCATIONS OF SMOKE DAMPERS.
4. CIRCUIT ALL SMOKE CONTROL DAMPERS WITHIN THIS AREA TO PANEL AND CIRCUIT INDICATED. REFER TO SMOKE CONTROL PLANS M-311C & M-321C FOR EXACT QUANTITY AND LOCATIONS OF SMOKE DAMPERS.
5. PROVIDE CLEAR LEXAN PROTECTIVE HINGED COVER OVER TOP OF PULL STATION (STI OR EQUAL) AND LABEL TO READ "FIRE ALARM PULL STATION".
6. MOUNTED BELOW COUNTER IN BACK VERTICAL FACE; COORDINATE WITH MILLWORK SHOP DRAWINGS PRIOR TO ROUGH-IN.
7. ALL SMOKE DAMPERS IN THIS AREA SHALL BE CIRCUITED TO 10CPR2-63 (SAME AS CIRCUIT AS SMOKE DAMPERS ON FIRST LEVEL). REFER TO MECHANICAL PLAN ON M111C & M121C FOR EXACT LOCATION AND QUANTITY.
8. PROVIDE POWER & FIRE ALARM DEVICES INDICATED FOR EACH SMOKE DAMPER IN THIS AREA, NOT ASSOCIATED WITH SMOKE CONTROL SYSTEM.
9. CONNECTION TO 120V CONDENSATE PUMP. INCLUDE NEUTRAL CONDUCTOR IN CIRCUITING INDICATED. TAP OFF OF ONE PHASE CONDUCTOR AND PROVIDE 120V CONNECTION TO CONDENSATE PUMP ASSOCIATED WITH FAN COIL UNIT.

**Dewberry®**  
800 North Magnolia Ave.  
Suite 1000, Orlando, FL 32803-3251  
t +1 407 843.5120  
f +1 407 649.8664

**Ajax**  
10365 Hood Road South Suite 203  
Jacksonville, FL 32257  
t +1 904-262-8660  
f +1 904-262-8623

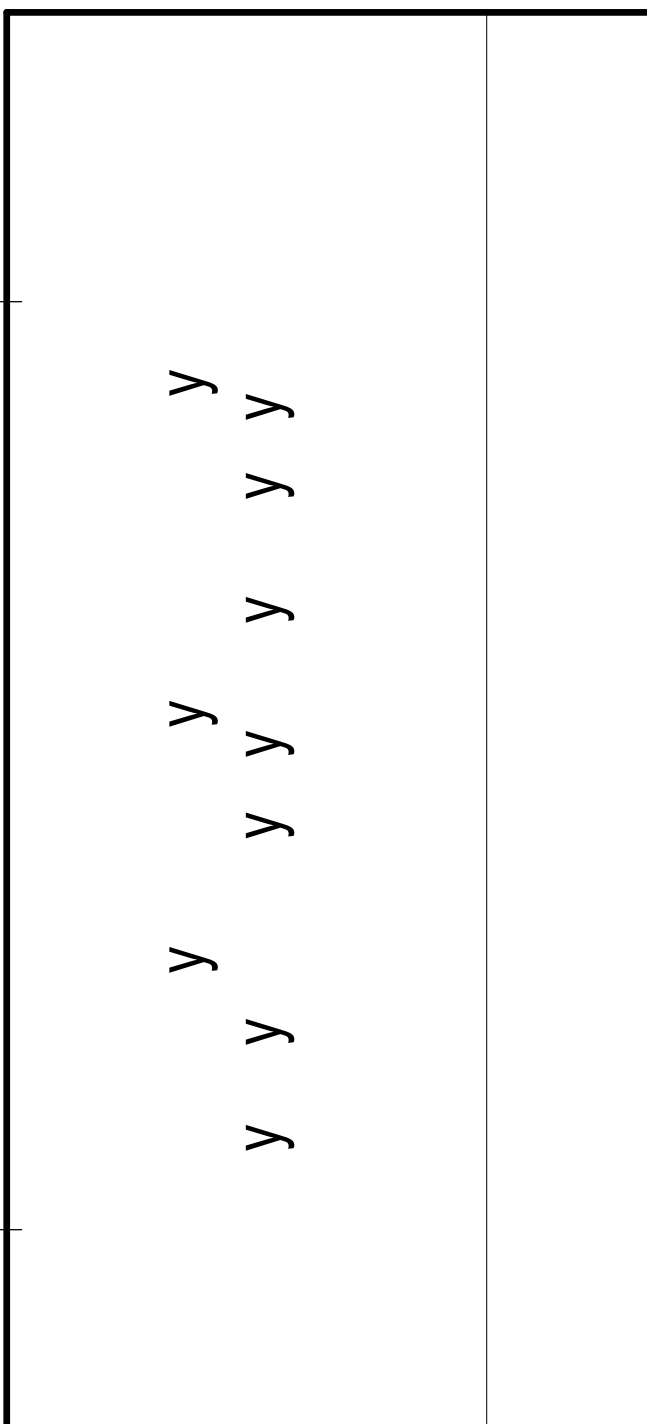
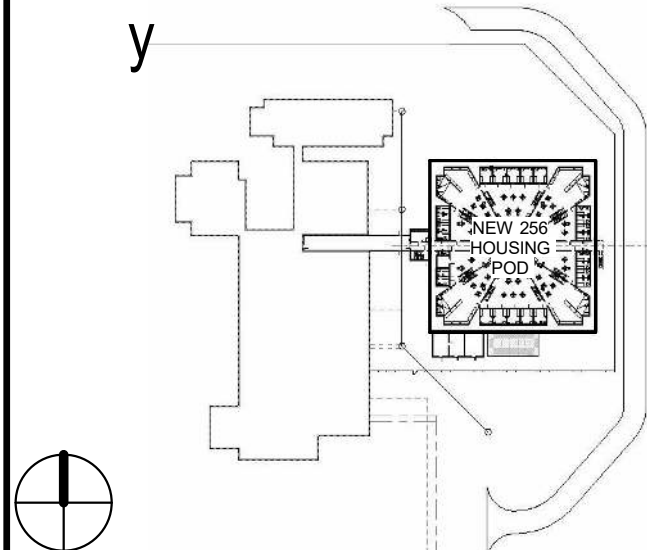
**TLC ENGINEERING SOLUTIONS**  
255 S. Orange Avenue  
Suite 1600  
Orlando, FL 32801  
P 407.841.9050  
COA 15  
www.tlcsolutions.com  
TLC No. 120018  
THINK. LISTEN. CREATE.

Professional Seals

Wayne Edward Allred, P.E.  
State of Florida  
Professional Engineer  
License No. 45800

This item has been electronically signed and sealed by the individual named above, using a dated Digital Signature in the space below, per F.A.C. Rule 61G15-23.004. Printed copies of this document are not considered signed and sealed, and the signature must be verified on any electronic copies.

Wayne E. Allred



SCALE 1/8" = 1'-0"

No.	Description	Date

REVISIONS

DRAWN BY \_\_\_\_\_ O DORIA  
APPROVED BY \_\_\_\_\_ W ALLRED  
CHECKED BY \_\_\_\_\_ L WOLFE  
DATE \_\_\_\_\_ JULY 24, 2020

TITLE

UPPER TIER  
POWER & FIRE  
ALARM PLAN -  
AREA C

PROJECT NO. 50101397

EP-121C

SHEET NO.

DESTROY AFTER USE