

Pull Station -
 Horn/Stroke -
 Stroke Only -

Smoke Detector -
 Duct Detector -
 Heat Detector -
 Junction to FACP -
 Annunciator Keypad -



5860

Remote Annunciator

The 5860 remote annunciator, can be used to operate and program Honeywell Silent Knight fire alarm control panels (FACPs) from anywhere within the system.

The 5860 features include an 80-character backlit LCD providing easy-to-understand system messages. The annunciator is ergonomically designed with over-sized buttons for the most frequently used features, like Reset and Silence.

In addition to status messages displayed on the LCD, there are five LEDs for alarm, supervisory, trouble, silence, and AC power status.

The 5860 annunciator is available in gray to match virtually any decor and red for applications where the annunciator must stand out. The annunciator enclosure can be surface or flush mounted. A trim ring kit is available for surface mounting.

COMPATIBILITY

The 5860 is compatible with the following Honeywell Silent Knight FACPs:

6820: Addressable fire alarm control panel with up to 1,110 addressable points

6820EVS: Addressable fire alarm control panel with an emergency communication systems and up to 1,110 addressable points

6808: Addressable fire alarm control panel with up to 198 addressable points

6700: Addressable fire alarm control panel with up to 100 addressable points

5820XL: Addressable fire alarm control panel

5820XL-EVS: Addressable fire alarm control panel with an emergency communication systems

5808: Addressable fire alarm control panel

5700: Addressable fire alarm control panel

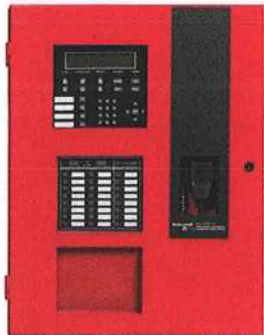


5860 / 5860R

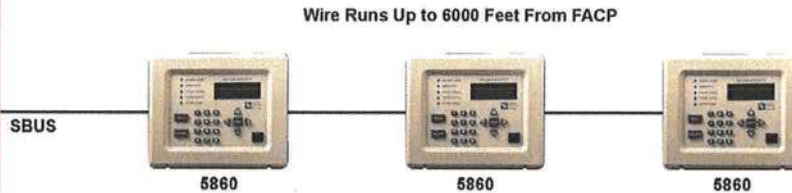
FEATURES & BENEFITS

- 80-character backlit LCD display (4 lines with 20 characters per line)
- Tactile / audible feedback when a key is pressed on the annunciator
- Uses the RS-485 SBUS to interface with the panel
- Support for simultaneous use of multiple 5860s
- Easily view current status by alarms, supervisorys, or troubles
- Five Status LEDs
- Available in red or light gray color
- Accommodates wiring lengths up to 6000 ft. from the control panel for added design and install flexibility
- Accepts user codes or fire fighter's key
- Larger keypad buttons makes it easier to maneuver for system reset and silencing

5860 Technical Specifications



Compatible Silent Knight FACP



- Up to Eight 5860s Per 5700 or 6700 System
- Up to 12 5860s Per 5808, 6808, 5820XL, or 5820XL-EVS System
- Up to 16 5860s per 6820 or 6820EVS System

For a complete listing of all compliance approvals and certifications, please visit www.silentknight.com.

Microsoft, Windows, and the Windows Logo are registered trademarks or trademarks of Microsoft Corporation.

Silent Knight® and Honeywell® are registered trademarks of Honeywell International, Inc.

This document is not intended to be used for installation purposes. We try to keep our product information up-to-date and accurate. We cannot cover all specific applications or anticipate all requirements. All specifications are subject to change without notice.

For Technical Support, call 800-446-6444.

5860 Features

PHYSICAL

Dimensions: 9.1"W x 7.4"H x 1.5"D (23.1W x 18.8H x 3.8D cm)

Shipping Weight: 2.8 lbs (1.3 kg)

Color: 5860R: Red; 5860: Gray

ENVIRONMENTAL

Operating Temperature: 32°F to 120°F (0°C to 49°C)

Humidity: 10% - 93% non-condensing)

ELECTRICAL

Operating Voltage: 24VDC

Standby Current: 20mA

Alarm Current: 25mA

ORDERING INFORMATION

5860: Remote Annunciator, four line (4x20) LCD annunciator with 20 characters per line. Gray

5860R: Remote Annunciator, four line (4x20) LCD annunciator with 20 characters per line. Red

ACCESSORIES

5860TR: Red Trim Ring for surface mounting

5860TG: Gray Trim Ring for surface mounting

AGENCY LISTINGS AND APPROVALS

UL listed

CSFM approved

Meets NFPA 72 requirements

FM approved

MEA approved

For more information

Learn more about Honeywell Silent Knight and other products by visiting www.silentknight.com

Honeywell Silent Knight

12 Clintonville Road
Northford, CT 06472
800-328-0103

Doc 350224 | Rev J | 12/17
© 2017 Honeywell International Inc.





Strobe, Horn Strobe, and Horn Notification Appliances



Description:

The Wheelock® Exceder™ Series of notification appliances feature a sleek modern design that will please building owners with reduced total cost of ownership. Installers will benefit from its comprehensive feature list, including the most candela options in one appliance, low current draw, no tools needed for setting changes, voltage test points, 12/24 VDC operation, universal mounting base and multiple mounting options for both new and retrofit construction.

The Wheelock® Exceder™ Series incorporates high reliability and high efficiency optics to minimize current draw allowing for a greater number of appliances on the notification appliance circuit. All strobe models feature an industry first of 8 candela settings on a single appliance. Models with an audible feature 3 sound settings (90, 95, 99 dB). All switches to change settings, can be set without the use of a tool and are located behind the appliance to prevent tampering. Wall models feature voltage test points to take readings with a voltage meter for troubleshooting and AHJ inspection.

The Wheelock® Exceder™ Series of wall and ceiling notification appliances feature a Universal Mounting Base (UMB) designed to simplify the installation and testing of horns, strobes, and combination horn strobes. The separate universal mounting base can be pre-wired to allow full testing of circuit wiring before the appliance is installed and the surface is finished. It comes complete with a Contact Cover for protection against dirt, dust, paint and damage to the contacts. The Contact Cover also acts as a shunting device to allow pre-wire testing for common wiring issues. The Contact Cover is polarized to prevent it from being installed incorrectly and prevents the appliance from being installed while it is on the UMB. When the Contact Cover is removed the circuit will show an open until the appliance is installed. The UMB allows for consistent installation and easy replacement of appliances if required. Wall models provide an optional locking screw for extra secure installation, while the ceiling models provide a captivated screw to prevent the screw from falling during installation.

- Save up to **48%** in current draw*
- Up to **9** models now in **1** appliance
- Save up to **14%** cost of installation**

- Sleek Modern Aesthetics**
- Finger Slide Switches**
- Voltage Test Points**
- Multiple Voltages**
- 3 Audible Settings**
90, 95, 99 dB
- 8 Candela Settings *****
Wall - 15/1575/30/75/95/110/135/185
Ceiling - 15/30/60/75/95/115/150/177
- Universal Mounting Base *****
Ceiling and Wall
Mounts to 5 Backbox Types
- Environmentally Friendly**
Low Current Draw


Compatibility and Requirements

- Synchronize using the Wheelock® Sync Modules or panels with built-in Wheelock® Patented Sync Protocol
- Compatible with UL "Regulated Voltage" using filtered VDC or unfiltered VRMS input voltage
- Strobes produce 1 flash per second over the "Regulated Voltage" range

* Compared to competitive models

*** Patented

** Compared to previous models

NOTE: All CAUTIONS and WARNINGS are identified by the symbol . All warnings are printed in bold capital letters.

WARNING: PLEASE READ THESE SPECIFICATIONS AND ASSOCIATED INSTALLATION INSTRUCTIONS CAREFULLY BEFORE USING, SPECIFYING OR APPLYING THIS PRODUCT. VISIT WWW.COOPERNOTIFICATION.COM OR CONTACT COOPER NOTIFICATION FOR THE CURRENT INSTALLATION INSTRUCTIONS. FAILURE TO COMPLY WITH ANY OF THESE INSTRUCTIONS, CAUTIONS OR WARNINGS COULD RESULT IN IMPROPER APPLICATION, INSTALLATION AND/OR OPERATION OF THESE PRODUCTS IN AN EMERGENCY SITUATION, WHICH COULD RESULT IN PROPERTY DAMAGE, AND SERIOUS INJURY OR DEATH TO YOU AND/OR OTHERS.

General Notes:

General Notes:

- Strobes are designed to flash at 1 flash per second minimum over their "Regulated Voltage Range".
- All candela ratings represent minimum effective strobe intensity based on UL Standard 1971.
- Series Exceder Strobe products are Listed under UL Standards 1971 and 464 for indoor use with a temperature range of 32°F to 120°F (0°C to 49°C) and maximum humidity of 93% (± 2%) UL 464 (85% UL 1971).
- Series Exceder horns are under UL Standard 464 for audible signal appliances (Indoor use only).

Low Current Draw = Fewer Power Supplies

Strobe Ratings per UL Standard 1971

Model		UL Max Current*													
		24 VDC / 24 FWR												12 VDC	
		15	15/75	30	60	75	95	110	115	135	150	177	185	15	15/75
ST	8.0-33.0	0.057	0.070	0.085		0.135	0.163	0.182		0.205			0.253	0.110	0.140
STC	8.0-33.0	0.061		0.085	0.103	0.135	0.163		0.182		0.205	0.253		0.110	

Horn Strobe Ratings per UL 1971 & Anechoic at 24 VDC

Model		UL Max Current* at Anechoic 99 dBA													
		24 VDC												12 VDC	
		15	15/75	30	60	75	95	110	115	135	150	177	185	15	15/75
HS	8.0-33.0	0.082	0.095	0.102		0.148	0.176	0.197		0.242			0.282	0.125	0.159
HSC	8.0-33.0	0.082		0.102	0.141	0.148	0.176		0.197		0.242	0.282		0.125	

Model		UL Max Current* at Anechoic 95 dBA													
		24 VDC												12 VDC	
		15	15/75	30	60	75	95	110	115	135	150	177	185	15	15/75
HS	8.0-33.0	0.073	0.083	0.087		0.139	0.163	0.186		0.230			0.272	0.122	0.153
HSC	8.0-33.0	0.073		0.087	0.128	0.139	0.163		0.186		0.230	0.272		0.122	

Model		UL Max Current* at Anechoic 90 dBA													
		24 VDC												12 VDC	
		15	15/75	30	60	75	95	110	115	135	150	177	185	15	15/75
HS	8.0-33.0	0.065	0.075	0.084		0.136	0.157	0.184		0.226			0.267	0.120	0.148
HSC	8.0-33.0	0.065		0.084	0.120	0.136	0.157		0.184		0.226	0.267		0.120	

Horn Ratings per UL Anechoic

Model	Regulated Voltage Range VDC	99 dB	95 dB	90 dB
HN	16-33.0	0.064	0.044	0.022
HNC	16-33.0	0.084	0.044	0.022
HN	8.0-17.5	0.047	0.026	0.017
HNC	8.0-17.5	0.047	0.026	0.017



* UL max current rating is the maximum RMS current within the listed voltage range (16-33 VDC for 24 VDC units). For strobes the UL max current is usually at the minimum listed voltage (16 VDC for 24 VDC units). For audibles the max current is usually at the maximum listed voltage (33 VDC for 24 VDC units). For unfiltered ratings, see installation instructions.

Specification & Ordering Information

Model	Strobe Candela	Sync w/ DSM or Wheelock Power Supplies	12/24 VDC*	Mounting Options
Horn Strobes				
HSR	15/1575/30/75/95/110/135/185	X	X	UMB**
HSW	15/1575/30/75/95/110/135/185	X	X	UMB**
HSRC	15/30/60/75/95/115/150/177	X	X	UMB**
HSWC	15/30/60/75/95/115/150/177	X	X	UMB**
Strobes				
STR	15/1575/30/75/95/110/135/185	X	X	UMB**
STW	15/1575/30/75/95/110/135/185	X	X	UMB**
STRC	15/30/60/75/95/115/150/177	X	X	UMB**
STWC	15/30/60/75/95/115/150/177	X	X	UMB**
Horn				
HNR		X	X	UMB**
HNW		X	X	UMB**
HNRC		X	X	UMB**
HNWC		X	X	UMB**

*12 VDC models feature 15 & 15/75 settings

**UMB = Universal Mounting Base

Model Legend

HN = Horn
 ST = Strobe
 HS = Horn Strobe
 C = Ceiling Mount
 W = White
 R = Red
 A = Agent Lettering (Strobes only)
 AL = Alert Lettering (Strobes only)
 N = No Lettering (Strobes only)

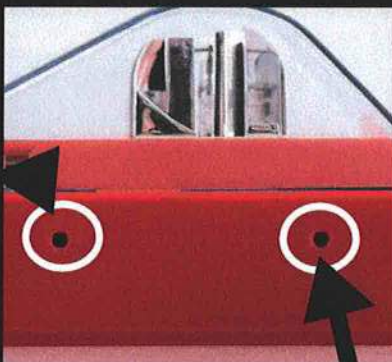
Example 1: STRC = Strobe, Red, Ceiling Mount
 Example 2: HSR = Horn Strobe, Red, Wall Mount
 Example 3: HSW = Horn Strobe, White, Wall Mount
 Example 4: STW-AL = Strobe, White, Wall Mount, Alert Lettering



Example: HSR



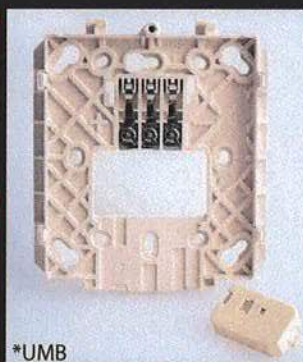
Example: HSWC



Voltage test points for quick troubleshooting and easy spot checking (wall models only)

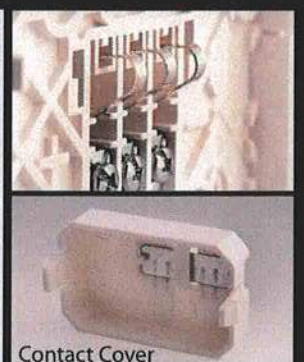


8 candela settings



*UMB

Common base for wall and ceiling with 5 mounting options



Contact Cover

NOTE: Due to continuous development of our products, specifications and offerings are subject to change without notice in accordance with Cooper Wheelock Inc., dba Cooper Notification standard terms and conditions.

Architects and Engineers Specifications

The notification appliances shall be Wheelock® Exceder™ Series HS Audible Strobe appliances, Series ST Visual Strobe appliances and Series HN Audible appliances or approved equals. The Series HS and ST Strobes shall be listed for UL Standard 1971 (Emergency Devices for the Hearing-Impaired) for Indoor Fire Protection Service. The Series HS and HN Audibles shall be UL Listed under Standard 464 (Fire Protective Signaling). All Series shall meet the requirements of FCC Part 15 Class B. All inputs shall be compatible with standard reverse polarity supervision of circuit wiring by a Fire Alarm Control Panel (FACP) with the ability to operate from 8 to 33 VDC. Indoor wall models shall incorporate voltage test points for easy voltage inspection.

The Series HS Audible Strobe and ST Strobe appliances shall produce a flash rate of one (1) flash per second over the Regulated Voltage Range and shall incorporate a Xenon flashtube enclosed in a rugged Lexan® lens. The Series shall be of low current design. Where Multi-Candela appliances are specified, the strobe intensity shall have 8 field selectable settings at 15, 15/75, 30, 75, 95, 110, 135, 185 candela for wall mount and 15, 30, 60, 75, 95, 115, 150, 177 candela for ceiling mount. The selector switch for selecting the candela shall be tamper resistant. The 15/75 candela strobe shall be specified when 15 candela UL Standard 1971 Listing with 75 candela on-axis is required (e.g. ADA compliance). Appliances with candela settings shall show the candela selection in a visible location at all times when installed.

The audible shall have a minimum of three (3) field selectable settings for dBA levels and shall have a choice of continuous or temporal (Code 3) audible outputs.

The Series HS Audible Strobe, ST Strobe and Series HN Audible shall incorporate a patented Universal Mounting Base that shall allow mounting to a single-gang, double-gang, 4-inch square, 3.5-inch octal, 4-inch octal or 100mm European type back boxes. Two wire appliance wiring shall be capable of directly connecting to the mounting base. Continuity checking of the entire NAC circuit prior to attaching any notification appliances shall be allowed. Product shall come with Contact Cover to protect contact springs. Removal of an appliance shall result in a supervision fault condition by the Fire Alarm Control Panel (FACP). The mounting base shall be the same base among all horn, strobe, horn strobe, wall and ceiling models. All notification appliances shall be backwards compatible.

The Series HS and ST wall models shall have a low profile measuring 5.24" H x 4.58" W x 2.19" D. Series HN wall shall measure 5.24" H x 4.58" W x 1.6" D. The Series HSC and STC shall be round and have a low profile with a diameter of 6.68" x 2.63" D. Series HNC ceiling shall have a diameter of 6.68" x 1.50" D.

When synchronization is required, the appliance shall be compatible with Wheelock®'s DSM Sync Modules, Wheelock® Power Supplies or other manufacturer's panels with built-in Wheelock® Patented Sync Protocol. The strobes shall not drift out of synchronization at any time during operation. If the sync protocol fails to operate, the strobe shall revert to a non-synchronized flash-rate and still maintain (1) flash per second over its Regulated Voltage Range. The appliance shall also be designed so that the audible signal may be silenced while maintaining strobe activation when used with Wheelock® synchronization protocol.

Wall Appliances – UL Standard 1971, UL Standard 464, California State Fire Marshal (CSFM), ULC, FM

Ceiling Appliances – UL Standard 1971, UL Standard 464, California State Fire Marshal (CSFM), ULC, FM



WE ENCOURAGE AND SUPPORT NICET CERTIFICATION
3 YEAR WARRANTY

Exceder - Spec Sheet 6/11

NJ Location
273 Branchport Ave.
Long Branch, NJ 07740
P: 800-631-2148
F: 732-222-8707
www.coopernotification.com

Cooper Notification is

Wheelock®



SAFEPATH®

WAVES



COOPERNotification



SK-DUCT

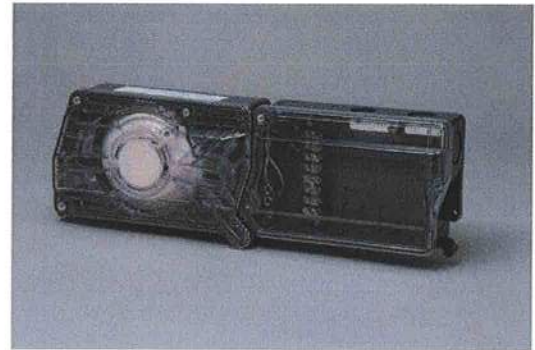
Intelligent Air Duct Smoke Detector

The SK-DUCT Intelligent air duct smoke detector is used with SK-PHOTOR (included) for detecting smoke and products of combustion present in air moving through an HVAC air handling system. When smoke is detected in a duct, the unit communicates the condition to the Honeywell Silent Knight control panel. The panel, in turn, depending on programming and wiring, turns off fans, blowers, and other devices. The duct housing allows for mounting of SK-RELAY addressable relay module.

The Model SK-DUCT Air Duct Smoke Detector utilizes photoelectric technology for the detection of smoke. It provides early detection of smoke and products of combustion present in air moving through HVAC ducts in Commercial and Industrial applications.

The SK-DUCT is in a heavy duty gray steel back box with a clear cover. It features a pivoting housing that fits both square and rectangular footprints capable of mounting to a round or rectangular duct. It installs quickly and easily.

The unit senses smoke in the most challenging conditions, operating in airflow speeds of 100 to 4000 feet per minute, temperatures of -4°F to 158°F, and a humidity range of 0 to 95 percent (non-condensing).



SK-DUCT

FEATURES & BENEFITS

- Versatile mounting options: square or rectangular configuration
- New Cover tamper signal
- LED alarm indication and communication on sensor head
- Detects and limits the spread of smoke
- Rugged steel back box with clear plastic cover
- Easy to clean
- Large terminal connection screws
- Transparent cover for convenient visual inspection
- Patented sampling tube installs from front or back of the detector with no tools required
- Available space within housing to accommodate mounting of relay module
- UL listed

SK-DUCT Technical Specifications

PHYSICAL

(Rectangular): 14.38" (37 cm) L X 5" (12.7 cm) W X 2.5" (6.6 cm) D

(Square): 7.75" (19.7cm) L x 9"(22.9cm) W x 2.5" D (6.35cm)

Weight: 1.6lb (0.73kg)

ELECTRICAL (using SK-Photo or SK-PhotoR)

Operating Voltage: 15–32 VDC

Standby Current: 300 μ A @ 24 VDC max.

Alarm Current: 6.5 mA @ 24 VDC max (with LED on)

ENVIRONMENTAL

Operating Temperature: -4°F – 158°F (-20°C – 70°C)

Humidity: 0% – 95% (non-condensing)

AIR VELOCITY

100 to 4000 ft/min: (0.5 – 20.3 m/sec.)

ORDERING INFORMATION

SK-DUCT: Intelligent non-relay duct smoke detector

SK-PHOTO: Addressable Photo Detector

SK-PHOTOR: Addressable Photo Detector with remote test capability (included with SK-Duct)

SK-RELAY: Addressable Relay Module, must be added if relay function is required, (fits in housing)

ACCESSORIES

DST1: Metal Sampling Tube Duct Width up to 1'

DST1.5: Metal Sampling Tube Duct Widths 1' – 2'

DST3: Metal Sampling Tube Duct Widths 2' – 4'

DST5: Metal Sampling Tube Duct Widths 4' – 8'

DST10: Metal Sampling Tube Duct Widths 8' – 12'

DH400OE-1: Weatherproof Enclosure

ETX: Metal Exhaust Tube Duct width 1'

RA100Z: Remote LED Annunciator

DCOIL: Duct accessory coil, required if using with SK-PHOTO and not SK-PHOTOR (included) with SK-DUCT

RTS151: Magnetic Remote Test station

RTS151KEY: Key-Activated Remote Test station

M02-04-00 Test Magnet P48-21-00 Replacement End Cap for Metal Sampling Tube

APA151: Remote annunciator with piezo alarm

IMPORTANT NOTES:

- The use of either RTS151 or RTS151KEY requires the installation of an accessory coil, DCOIL, sold separately. Please refer to the SK-DUCT installation instructions for more information
- The RTS151/RTS151KEY test coil circuit requires an external 24VDC power supply which must be UL listed.

ACCESSORY CURRENT LOADS AT 24VDC		
Device	Standby	Alarm
RA100Z	0mA	12mA Max.
RTS151	0mA	12mA Max
RTS151KEY	12mA	12mA Max

COMPATIBILITY

The SK-DUCT is compatible with the following Honeywell Silent Knight fire alarm control panels:

6820: Addressable fire alarm control panel

6820EVS: Addressable fire alarm control panel with an emergency mass notification system.

6808: Addressable fire alarm control panel

6700: Addressable fire alarm control panel

5700: Addressable fire alarm control panel

5808: Addressable fire alarm control panel

5820XL: Addressable fire alarm control panel

5820XL-EVS: Addressable fire alarm control panel with an emergency mass notification system.

For a complete listing of all compliance approvals and certifications, please visit www.silentknight.com.

Microsoft, Windows, and the Windows Logo are registered trademarks or trademarks of Microsoft Corporation.

Silent Knight®, System Sensor® and Honeywell® are registered trademarks of Honeywell International, Inc.

This document is not intended to be used for installation purposes. We try to keep our product information up-to-date and accurate. We cannot cover all specific applications or anticipate all requirements. All specifications are subject to change without notice.

For Technical Support, call 800-446-6444.

For more information

Learn more about Honeywell Silent Knight and other products by visiting www.silentknight.com

Honeywell Silent Knight

12 Clintonville Road
Northford, CT 06472
800-328-0103



SD500-PS and SD500-PSDA Addressable Pull-Station



IntelliKnight's addressable pull stations combine fast response with pin-point location ID.

The SD500-PS and SD500-PSDA are a single action or dual action addressable manual fire alarm pull station for use with Silent Knight's IntelliKnight fire control panel. Extremely easy to operate, the SD500-PS/PSDA provides a fast and practical means of manually initiating a fire alarm signal. The IntelliKnight panel recognizes each manual pull station by its specific address saving precious seconds in determining the location of an alarm. The SD500-PS/PSDA mounts to a single gang box and features a rugged metal construction that lasts and lasts.

Combine all this with the features you've come to expect from Silent Knight - easy installation and stable operation - and it adds up to a flexible solution for all your fire protection needs.

Model SD500-PS & SD500-PSDA Addressable Pull Station

The SD500-PS is a single action addressable fire pull station, and the SD500-PSDA is a dual action addressable fire pull station. The SD500-PS/PSDA feature rugged metal construction. A terminal strip on back of the pull station allows interconnection of the pull station to the SLC of an IntelliKnight control panel. The SD500-PS/PSDA is designed for indoor use in non-explosive environments. The normally open initiating point contacts are gold-plated to avoid risk of corrosion. The SD500-PS/PSDA has been tested by UL for compliance to the requirements of the Americans with Disabilities Act (ADA).

Features

- UL Listed
- CSFM listed
- ADA compliant
- Key reset (Same key as Silent Knight enclosures)
- Surface mount back box available
- Terminals - accept up to 14 gauge wire

- Extremely easy to operate
- Corrosion-resistant gold-plated contacts.
- Reflective label makes it easier to locate in low light

Operation

The SD500-PS/PSDA single action pull stations are operated by a pull on the front pull cover of the station. A plunger switch, wired to a self contained addressable module, is released as the pull station opens to initiate the alarm. Once operated, the cover hangs down and can be seen up to 100 feet away. The pull station is reset by returning the front cover to the normal upright position and relocking the station with a reset key. The reset keys are the same keys used on Silent Knight enclosures.

The SD500-PS/PSDA includes a status LED which blinks, indicating that the addressable module is communicating with the loop. The status LED lights continuously during an alarm. A dip switch on the addressable module is used to set the unique address.

Specifications

Operating Voltage:	24VDC
Standby Current:	.55mA
Alarm Current:	.55mA



SD500-PS

Ambient Temperature:	32°F to 120°F (0°C to 49°C)
Mounting:	Single gang box -
Optional Red Surface Mount Box PS-SMBB	



**SILENT
KNIGHT**

A Honeywell Company

SD500-PS and SD500-PSDA Addressable Pull-Station

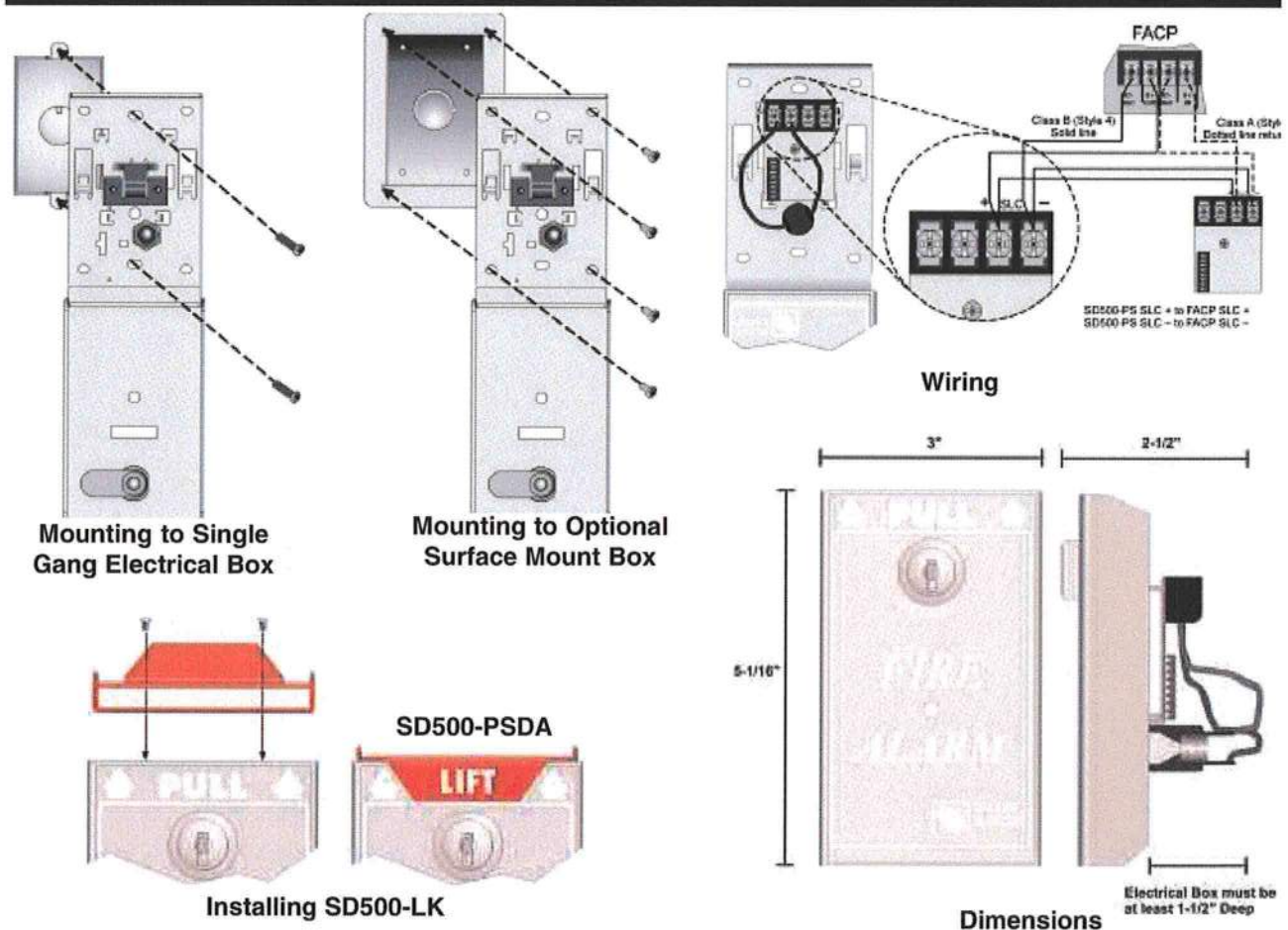


Engineering Specifications

Manual pull station shall be addressable Module SD500-PS/SD500-PSDA. Equipment shall be made of 14 gauge C.R.S.(Cold Rolled Steel), painted with a red enamel. The label shall contain the words Fire Alarm and be made of a reflective material embossed text 3/8 inches tall. Operating instruction shall be clearly visible on the same label. Manual station shall contain a key operated test and reset lock using a lock plate actuator, the key shall match the control panel.

Manual station shall contain four terminal blocks with two connected to the addressable module and two connect to the SLC loop. Manual station shall provide data to the control panel with an ID address programmed by dip switch settings.

Manual stations shall be Underwriters Laboratories Inc. listed and installed within the limits defined in the American Disabilities Act.



**SILENT
KNIGHT**

A Honeywell Company

7550 Meridian Circle, Maple Grove, MN 55369-4927
800-446-6444 or in Minnesota 763-493-6435
 FAX: 763-493-6475
 World Wide Web: <http://www.silentknight.com>

MADE IN AMERICA

FORM# 350342, Rev. 09/03

Copyright © 2003 Silent Knight



**SILENT
KNIGHT**

by Honeywell

Addressable Photoelectric Smoke Detector

**Detect smoldering fires quickly and
get help fast with IntelliKnight®
photoelectric smoke detectors.**

IntelliKnight addressable photoelectric smoke detectors are the clear choice for commercial settings where smoldering fires are a threat. In addition to accurately detecting a smoldering fire, each SD505-PHOTO photoelectric detector has a unique address, which is recognized by the IntelliKnight panel. No precious seconds are wasted in determining location of an alarm.

The SD505-PHOTO compensates automatically for contamination in the environment. And detector testing is simple—even from a remote site. Like other IntelliKnight detector models, the SD505-PHOTO offers a low profile for pleasing aesthetics. The IntelliKnight family of detectors has been designed to use a common base, Model SD505-6AB, allowing complete application and placement flexibility. Combine all this with the features you've come to expect from Silent Knight smoke detectors—easy installation, stable operation, RF/transient protection, and vandal-resistant locking—and it adds up to a flexible solution for all your fire protection needs.

Model SD505-PHOTO

Analog / Addressable Photoelectric Type Smoke Detector

The SD505-PHOTO is particularly suited to detecting dense smoke typical of fires involving materials such as soft furnishings, plastic, foam or other similar materials which tend to smolder and produce large visible particles.

The detector features automatic compensation for contamination and a simple detector calibration test procedure that can be run from the panel or remotely (using the Windows™ based downloading software).

Operation

The SD505-PHOTO units made up of an LED light source and a silicon photo diode receiving element. In a normal standby condition, the receiving element receives no light from the pulsing light source. In the event of fire, smoke enters the detector and light is reflected from the smoke particles to the receiving element.

The light received is converted into an electronic signal. Under normal conditions, the status LED blinks

approximately every 15 seconds, indicating that the head is communicating with the loop. The LED lights continuously during the alarm period.

Features

- Low profile, 2 inches, including base
- Simple and reliable addressing without mechanical switches
- Automatic compensation for sensor contamination
- Built-in fire test feature
- Simple detector calibration testing through the control panel or remotely through a Windows™ based computer software.
- Vandal-resistance locking features
- Field cleanable
- UL listed, meets NFPA 72 Ch 7 requirements
- CSFM approved
- MEA approved
- FM Approved

Specifications

Operating Voltage: 24-41 VDC

Current Consumption:

Standby:	.55 mA
Alarm:	.55 mA



SD505-PHOTO Smoke Detector

Ambient Temperature: 32°F to 120°F (0°C to 49°C)

Mounting: 4" Square, 4" OCT, Single gang mud ring

Relative Humidity: 85% non-condensing

Air Velocity: 0 - 300 FPM

Compatible Bases: SD505-6AB
(Sold Separately) SD505-6IB
SD505-6RB
SD505-6SB

Model SD505-PHOTO

Addressable Photoelectric

Smoke Detector

Engineering Specifications

The contractor shall furnish and install where indicated on the plans, addressable photoelectric smoke detector Silent Knight SD505-PHOTO. The combination detector head, and twist-lock base, shall be UL® listed compatible with Silent Knight's IntelliKnight fire control panels.

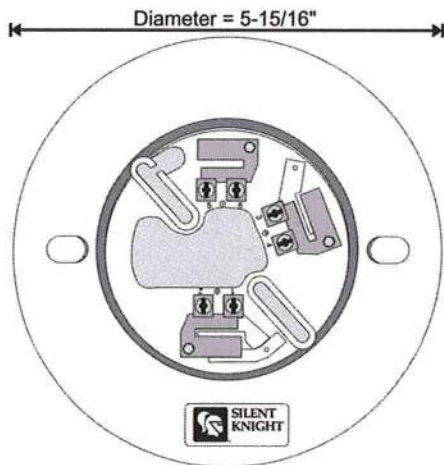
The base shall permit direct interchange with Silent Knight SD505-HEAT Heat Detector. Base shall be the appropriate twist-lock base SD505-6AB.

The smoke detector shall have a flashing status LED for visual supervision. When the detector is actuated, the flashing LED will latch on steady. The detector may be reset by actuating the control panel reset switch.

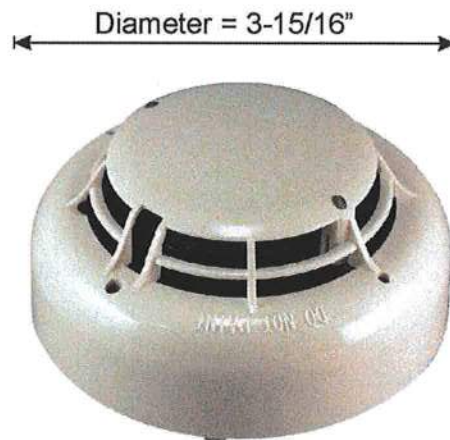
The calibration of the detector shall be capable of being selected and measured by the control panel without the need for external test apparatus.

The vandal-resistant, security locking feature shall be used in those areas as indicated on the drawing. The locking feature shall be field selectable as required.

The SD505-PHOTO shall automatically perform a functional test of the detector. The test method shall simulate effects of products of combustion in the chamber to ensure testing of detector circuits.



Model SD505-6AB Detector Base
(front view)



Model SD505-PHOTO Detector Head
(front view)



This document is not intended to be used for installation purposes. We try to keep our product information up-to-date and accurate. We cannot cover all specific applications or anticipate all requirements. All specifications are subject to change without notice. For more information, contact Silent Knight 12 Clintonville Road, Northford, CT 06472-1610 Phone: (800) 328-0103, Fax: (203) 484-7118. www.silentknight.com