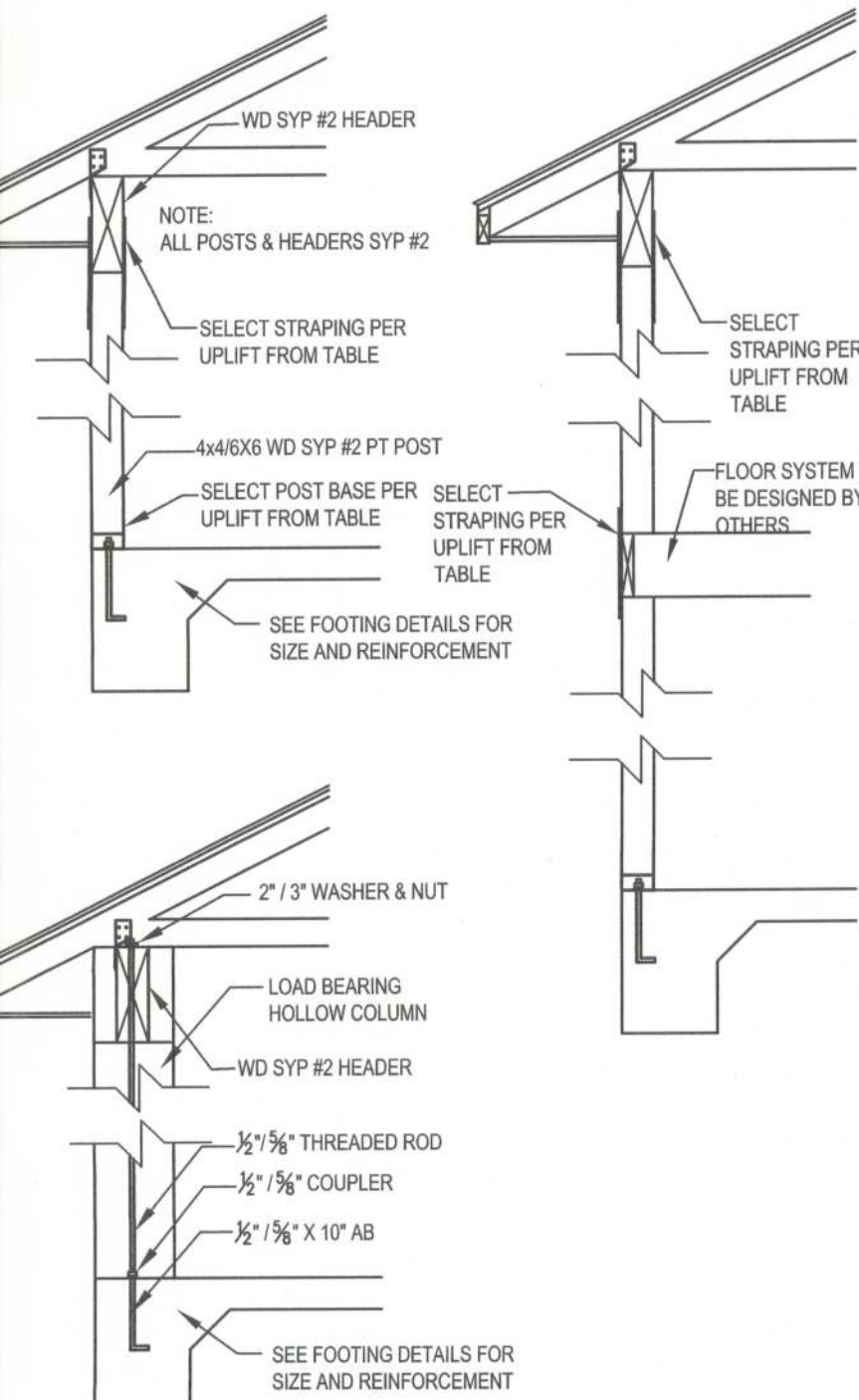


TYPICAL TRUSS UPLIFT & MAX 12'-0" WALL HEIGHT	ANCHOR BOLT SPACING	SP4/SP6 SPACING	ALTERNATE SP4/SP6 SPACING
770 LB	48" O.C.	48" O.C.	N/A
890 LB	48" O.C.	32" O.C.	N/A
1270 LB	32" O.C.	16" O.C.	32" O.C.
1500 LB	24" O.C.	16" O.C.	16" O.C.
2200 LB	LT101 W/ 50" X 7" WEDGE ANCHOR	N/A	HT500 NAILED TO STUD PACK

NOTE: SP2 TOP & SP1 BOTTOM ALTERNATE FOR SP4/6

NOTE: MINIMUM ANCHOR BOLT SPACING FOR WALLS WITH A HEIGHT GREATER THAN 10'-0" AND LESS THAN 14'-0" SHALL BE 32" O.C.

W1 - SINGLE STORY EXT. WALL SECTION  
SCALE: 1/2"=1'-0" REV-22-AUG-03

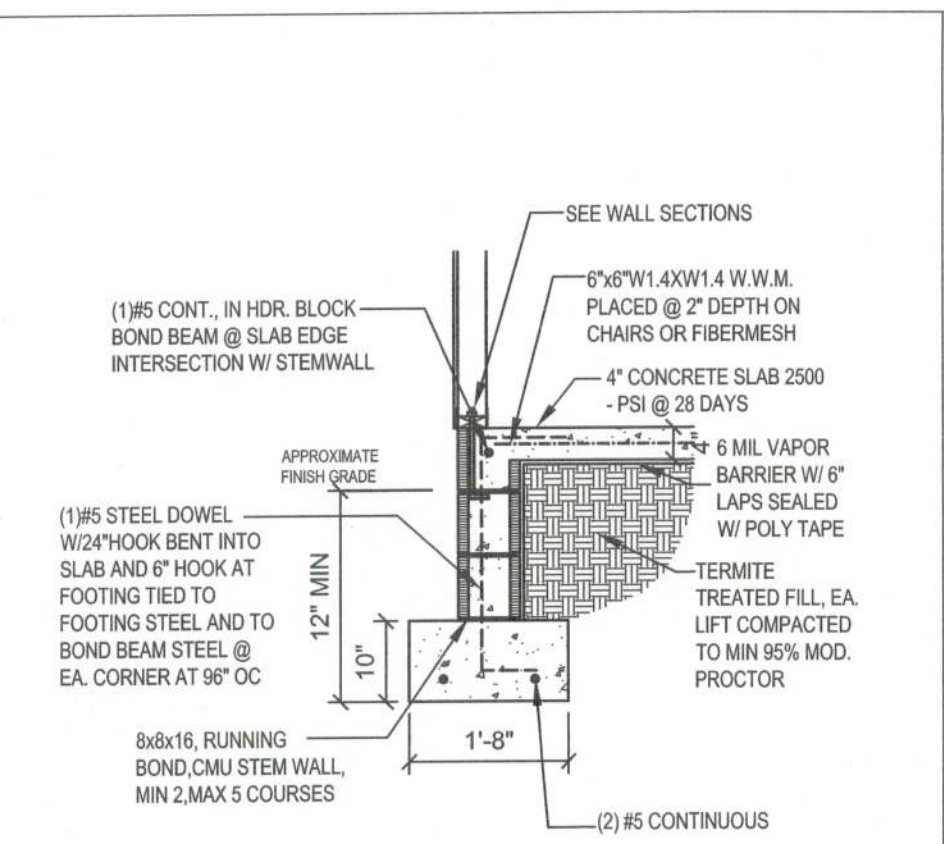


TYPICAL TRUSS UPLIFT	POST BASE ANCHOR	BETWEEN FLOOR STRAPPING	HEADER STRAPPING
555 LB	AS444 W/ (5)-100 & (5)-100 EA.	(2) LSTA21 W/ (5)-100 EA.	(2) LSTA21 W/ (5)-100 EA.
120 LB	AS444 W/ (5)-100 & (5)-100 EA.	(2) LSTA21 W/ (5)-100 EA.	(2) LSTA21 W/ (5)-100 EA.
2200 LB	AS444 W/ (5)-100 & (5)-100 EA.	(2) LSTA21 W/ (5)-100 EA.	(2) LSTA21 W/ (5)-100 EA.
2300 LB	AS444 W/ (5)-100 & (5)-100 EA.	(2) LSTA21 W/ (5)-100 EA.	(2) LSTA21 W/ (5)-100 EA.

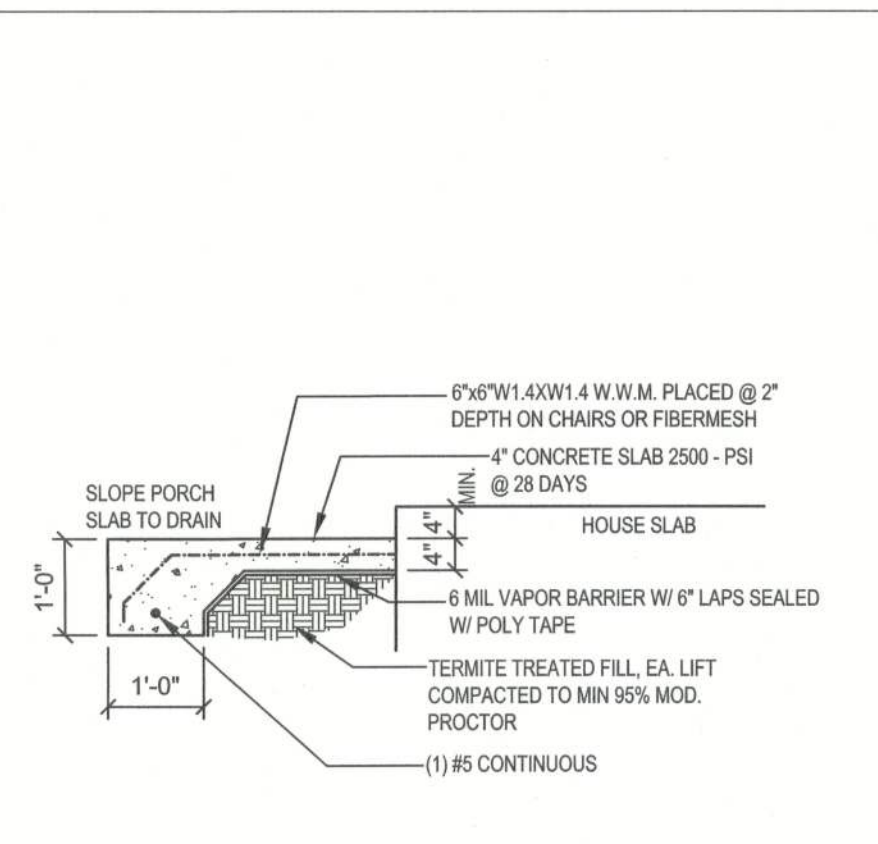
NOTE: 1" UP AB ATTACHED TO 3" THREADED ROD WITH 2" WASHER & NUT TOP.

NOTE: 3" X 10" AB ATTACHED TO 3" THREADED ROD WITH 2" WASHER & NUT TOP.

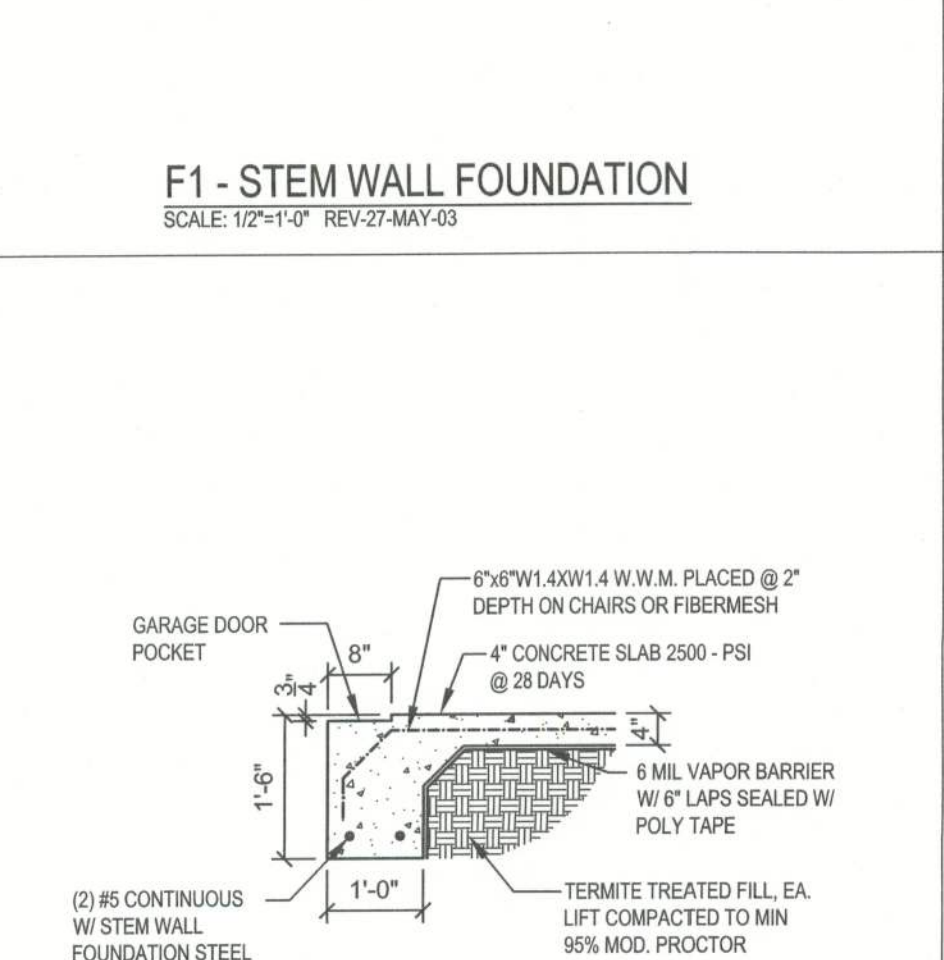
W12 - PORCH HEADER ANCHORS  
SCALE: N.T.S. REV-18-JUL-03



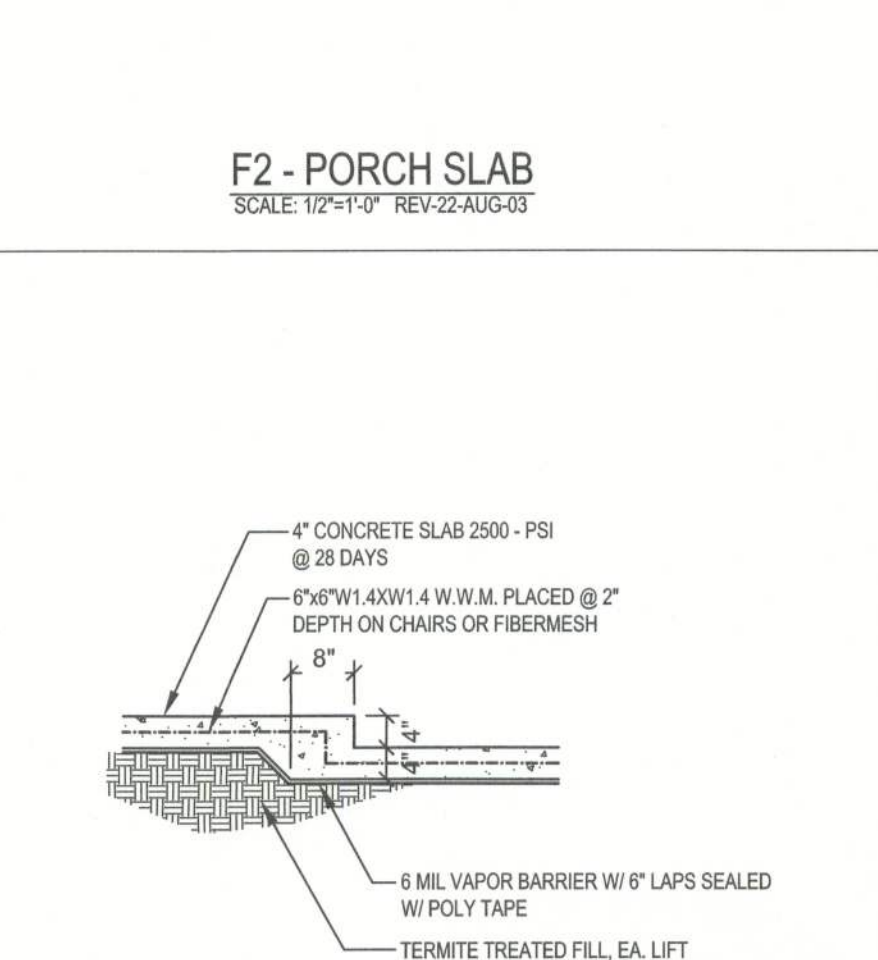
F1 - STEM WALL FOUNDATION  
SCALE: 1/2"=1'-0" REV-27-MAY-03



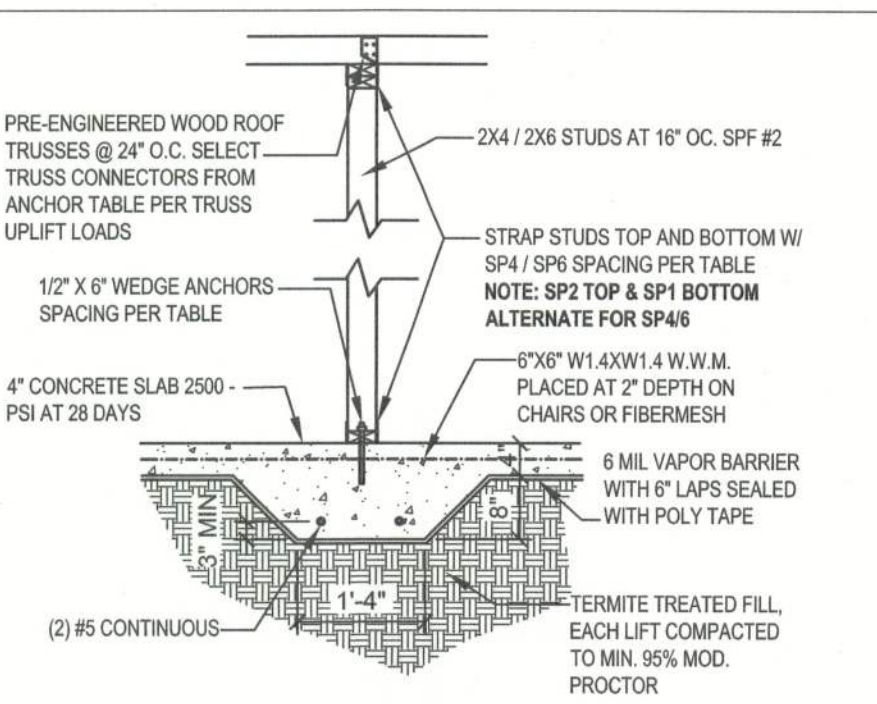
F2 - PORCH SLAB  
SCALE: 1/2"=1'-0" REV-22-AUG-03



F3 - GARAGE DOOR POCKET  
SCALE: 1/2"=1'-0" 22-AUG-03

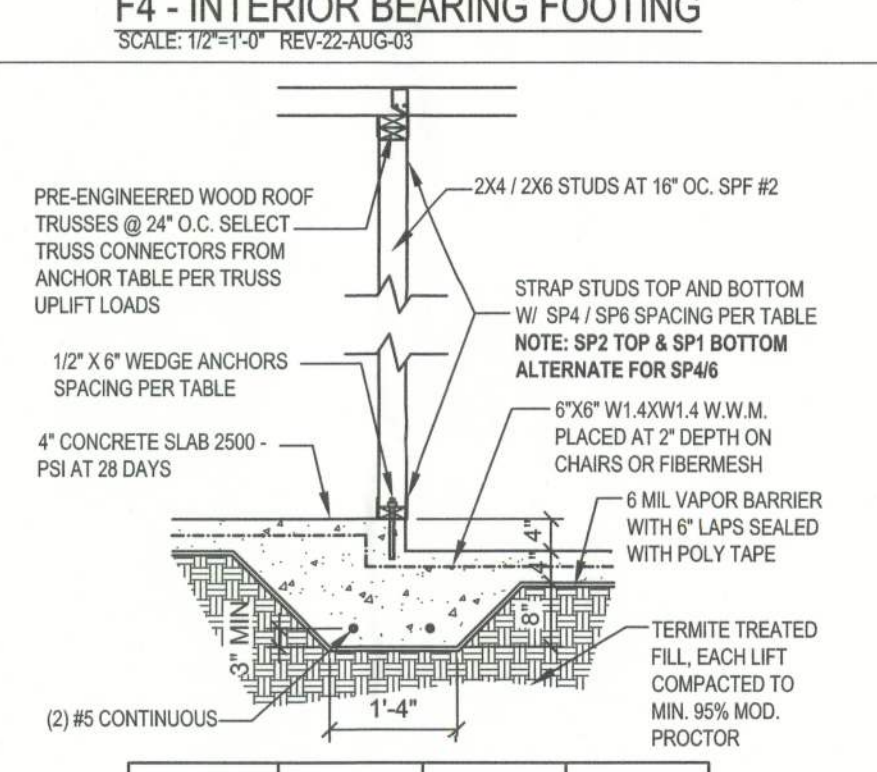


F12 - NON-BEARING STEP FOOTING  
SCALE: 1/2"=1'-0" REV-08-JAN-05



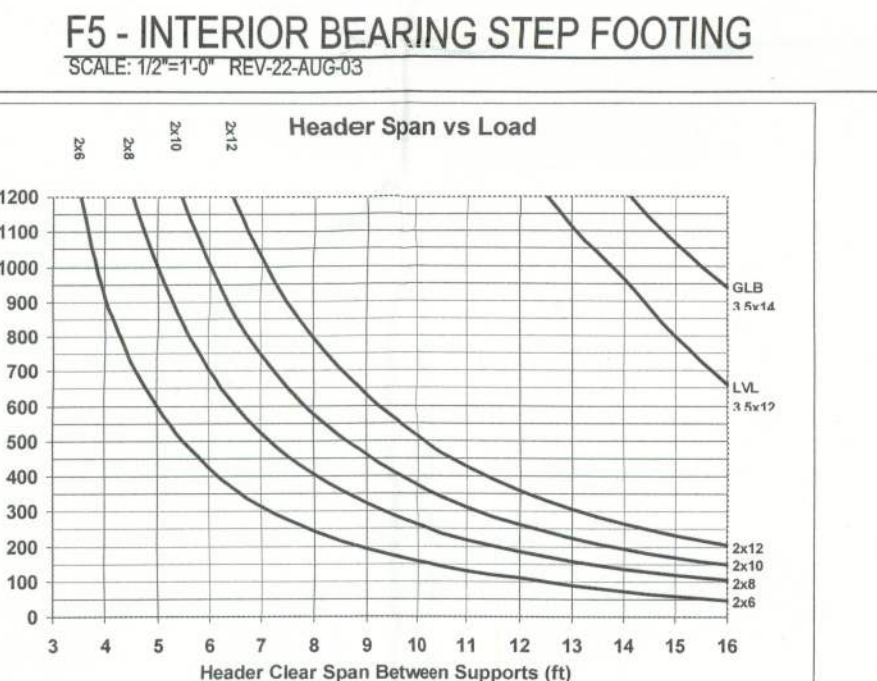
F4 - INTERIOR BEARING FOOTING  
SCALE: 1/2"=1'-0" REV-22-AUG-03

TYPICAL TRUSS UPLIFT	WEDGE ANCHOR SPACING	SP4/SP6 SPACING	TRUSS CONNECTOR
400 LB	48" O.C.	48" O.C.	H25A
600 LB	48" O.C.	32" O.C.	H10
1000 LB	32" O.C.	16" O.C.	HT500
2200 LB	LT101 W/ 50" X 7" WEDGE ANCHOR	N/A	HT500 NAILED TO STUD PACK



F5 - INTERIOR BEARING STEP FOOTING  
SCALE: 1/2"=1'-0" REV-22-AUG-03

TYPICAL TRUSS UPLIFT	WEDGE ANCHOR SPACING	SP4/SP6 SPACING	TRUSS CONNECTOR
400 LB	48" O.C.	48" O.C.	H25A
600 LB	48" O.C.	32" O.C.	H10
1000 LB	32" O.C.	16" O.C.	HT500
2200 LB	LT101 W/ 50" X 7" WEDGE ANCHOR	N/A	HT500 NAILED TO STUD PACK

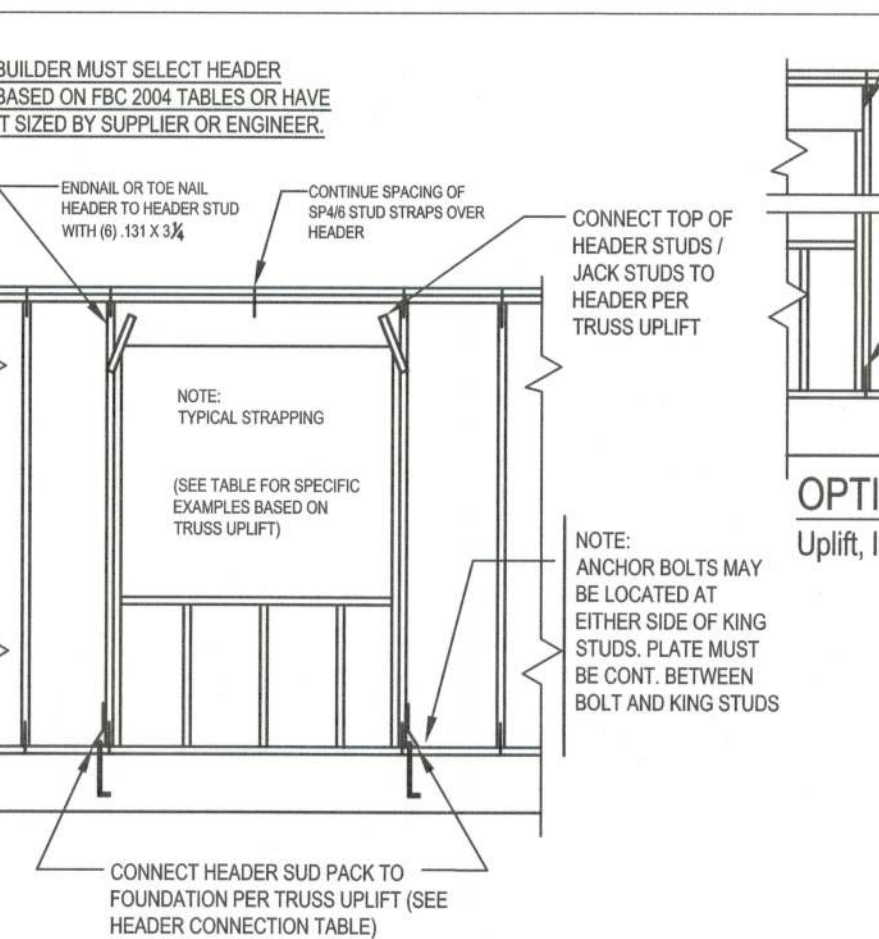


Truss Design Loading: LL = 20psf, DL = 2psf	Notes
1. Jack Truss	1. Duration factor, C <sub>d</sub> = 1.25, applied to F <sub>b</sub> and F <sub>v</sub> (no increase to E or F <sub>c</sub> for duration of load).
2. Truss members are 100% wet with 100% wet lumber and 100% wet steel.	2. Truss members are 100% wet with 100% wet lumber and 100% wet steel.
3. Truss members are 100% wet with 100% wet lumber and 100% wet steel.	3. Truss members are 100% wet with 100% wet lumber and 100% wet steel.
4. Truss members are 100% wet with 100% wet lumber and 100% wet steel.	4. Truss members are 100% wet with 100% wet lumber and 100% wet steel.
5. Truss members are 100% wet with 100% wet lumber and 100% wet steel.	5. Truss members are 100% wet with 100% wet lumber and 100% wet steel.
6. Truss members are 100% wet with 100% wet lumber and 100% wet steel.	6. Truss members are 100% wet with 100% wet lumber and 100% wet steel.
7. Truss members are 100% wet with 100% wet lumber and 100% wet steel.	7. Truss members are 100% wet with 100% wet lumber and 100% wet steel.
8. Truss members are 100% wet with 100% wet lumber and 100% wet steel.	8. Truss members are 100% wet with 100% wet lumber and 100% wet steel.
9. Truss members are 100% wet with 100% wet lumber and 100% wet steel.	9. Truss members are 100% wet with 100% wet lumber and 100% wet steel.
10. Truss members are 100% wet with 100% wet lumber and 100% wet steel.	10. Truss members are 100% wet with 100% wet lumber and 100% wet steel.
11. Truss members are 100% wet with 100% wet lumber and 100% wet steel.	11. Truss members are 100% wet with 100% wet lumber and 100% wet steel.
12. Truss members are 100% wet with 100% wet lumber and 100% wet steel.	12. Truss members are 100% wet with 100% wet lumber and 100% wet steel.
13. Truss members are 100% wet with 100% wet lumber and 100% wet steel.	13. Truss members are 100% wet with 100% wet lumber and 100% wet steel.
14. Truss members are 100% wet with 100% wet lumber and 100% wet steel.	14. Truss members are 100% wet with 100% wet lumber and 100% wet steel.
15. Truss members are 100% wet with 100% wet lumber and 100% wet steel.	15. Truss members are 100% wet with 100% wet lumber and 100% wet steel.
16. Truss members are 100% wet with 100% wet lumber and 100% wet steel.	16. Truss members are 100% wet with 100% wet lumber and 100% wet steel.
17. Truss members are 100% wet with 100% wet lumber and 100% wet steel.	17. Truss members are 100% wet with 100% wet lumber and 100% wet steel.
18. Truss members are 100% wet with 100% wet lumber and 100% wet steel.	18. Truss members are 100% wet with 100% wet lumber and 100% wet steel.
19. Truss members are 100% wet with 100% wet lumber and 100% wet steel.	19. Truss members are 100% wet with 100% wet lumber and 100% wet steel.
20. Truss members are 100% wet with 100% wet lumber and 100% wet steel.	20. Truss members are 100% wet with 100% wet lumber and 100% wet steel.

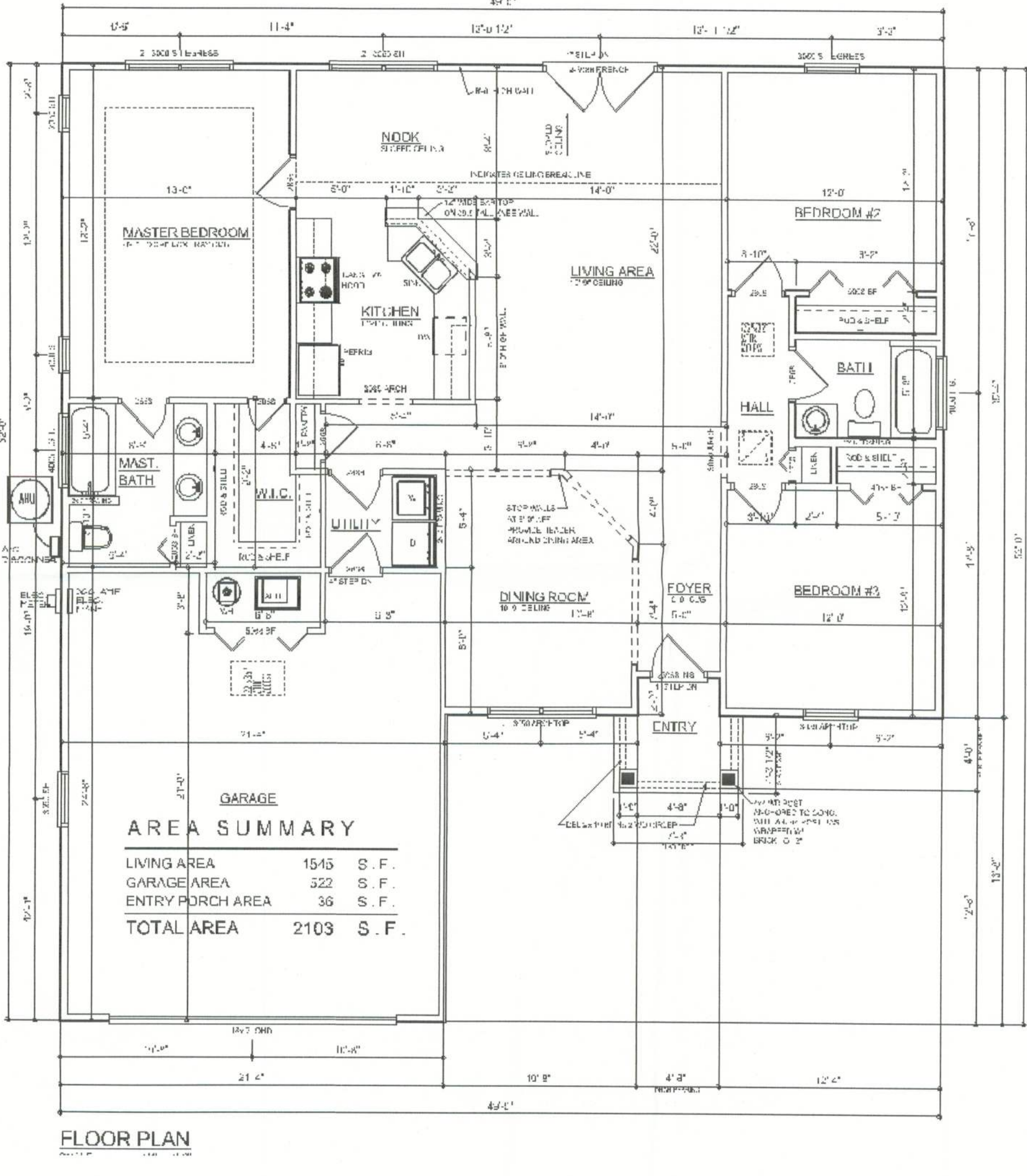
W71 - HEADER SPANS FOR ROOF/CEILING LOAD

N5 - TRUSS UPLIFT CONNECTOR TABLE				REV-18-NOV-04
All connectors are Simpson Strongtie, Inc. Select top and bottom connections from this table or SST catalog to meet truss uplift. Use fasteners as specified.				
Uplift SPF	Uplift SYP	Truss Connector	To Plate	To Truss / Rafter
320	455	H3	4-8d	4-8d
245	350	H5A	3-8d	3-8d
535	600	H2.5A	5-8d	5-8d
620	720	H10	6-10d x 1 1/2"	6-10d x 1 1/2"
650	950	LT512	8-8d x 1 1/2"	8-8d x 1 1/2"
1245	1450	HT520	10-10d or 12-10d x 1 1/2"	10-10d or 12-10d x 1 1/2"
1265	1470	H16, H16-2	10-10d x 1 1/2"	2-10d x 1 1/2"
1785	2050	LG2	14-10d Sinker	16-16d Sinker
3555	4200	MG1	5/8" Thd Rod	22-10d
SPF	SYP	Strap Connector	To One Member	To Other Member
760	885	SP4	6-10d x 1 1/2"	N/A
865	1005	CS20	9-8d or 7-10d	9-8d or 7-10d
1085	1265	LSTA18-24	7-10d	7-10d
1170	1380	SPH4	12-10d x 1 1/2"	N/A
420	455	SSP	4-10d	3-10d to double plate or 1-10d to single
800	825	OSP	8-10d	6-10d to double plate or 2-10d to single
1420	1650	CS16	14-8d or 11-10d	14-8d or 11-10d
SPF	SYP	Column Anchor	To Foundation	To Column / Truss
1100	1350	LT119	5/8" x 16" AB	8-16d Sinkers
1985	2310	LT113	5/8" x 16" AB	18-10d x 1 1/2"
2385	2775	H23A	5/8" x 16" AB	2-9/16" Bolts
3590	4175	HT116	5/8" x 16" AB	18-16d
1975	2300	ABU46	5/8" x 16" AB	12-16d

Notes:  
1. Supporting Truss: The truss is subjected to maximum design loading for gravity loads. The truss should not be used for a truss under truss bearing loading condition.  
2. Truss Design Loading: LL = 20psf, DL = 2psf. 3. Duration factor, C<sub>d</sub> = 1.25, applied to F<sub>b</sub> and F<sub>v</sub> (no increase to E or F<sub>c</sub> for duration of load).  
4. Truss members are 100% wet with 100% wet lumber and 100% wet steel. 5. Truss members are 100% wet with 100% wet lumber and 100% wet steel.  
6. Truss members are 100% wet with 100% wet lumber and 100% wet steel. 7. Truss members are 100% wet with 100% wet lumber and 100% wet steel.  
8. Truss members are 100% wet with 100% wet lumber and 100% wet steel. 9. Truss members are 100% wet with 100% wet lumber and 100% wet steel.  
10. Truss members are 100% wet with 100% wet lumber and 100% wet steel. 11. Truss members are 100% wet with 100% wet lumber and 100% wet steel.  
12. Truss members are 100% wet with 100% wet lumber and 100% wet steel. 13. Truss members are 100% wet with 100% wet lumber and 100% wet steel.  
14. Truss members are 100% wet with 100% wet lumber and 100% wet steel. 15. Truss members are 100% wet with 100% wet lumber and 100% wet steel.  
16. Truss members are 100% wet with 100% wet lumber and 100% wet steel. 17. Truss members are 100% wet with 100% wet lumber and 100% wet steel.  
18. Truss members are 100% wet with 100% wet lumber and 100% wet steel. 19. Truss members are 100% wet with 100% wet lumber and 100% wet steel.  
20. Truss members are 100% wet with 100% wet lumber and 100% wet steel. 21. Truss members are 100% wet with 100% wet lumber and 100% wet steel.  
22. Truss members are 100% wet with 100% wet lumber and 100% wet steel. 23. Truss members are 100% wet with 100% wet lumber and 100% wet steel.  
24. Truss members are 100% wet with 100% wet lumber and 100% wet steel. 25. Truss members are 100% wet with 100% wet lumber and 100% wet steel.  
26. Truss members are 100% wet with 100% wet lumber and 100% wet steel. 27. Truss members are 100% wet with 100% wet lumber and 100% wet steel.  
28. Truss members are 100% wet with 100% wet lumber and 100% wet steel. 29. Truss members are 100% wet with 100% wet lumber and 100% wet steel.  
30. Truss members are 100% wet with 100% wet lumber and 100% wet steel. 31. Truss members are 100% wet with 100% wet lumber and 100% wet steel.  
32. Truss members are 100% wet with 100% wet lumber and 100% wet steel. 33. Truss members are 100% wet with 100% wet lumber and 100% wet steel.  
34. Truss members are 100% wet with 100% wet lumber and 100% wet steel. 35. Truss members are 100% wet with 100% wet lumber and 100% wet steel.  
36. Truss members are 100% wet with 100% wet lumber and 100% wet steel. 37. Truss members are 100% wet with 100% wet lumber and 100% wet steel.  
38. Truss members are 100% wet with 100% wet lumber and 100% wet steel. 39. Truss members are 100% wet with 100% wet lumber and 100% wet steel.  
40. Truss members are 100% wet with 100% wet lumber and 100% wet steel. 41. Truss members are 100% wet with 100% wet lumber and 100% wet steel.  
42. Truss members are 100% wet with 100% wet lumber and 100% wet steel. 43. Truss members are 100% wet with 100% wet lumber and 100% wet steel.  
44. Truss members are 100% wet with 100% wet lumber and 100% wet steel. 45. Truss members are 100% wet with 100% wet lumber and 100% wet steel.  
46. Truss members are 100% wet with 100% wet lumber and 100% wet steel. 47. Truss members are 100% wet with 100% wet lumber and 100% wet steel.  
48. Truss members are 100% wet with 100% wet lumber and 100% wet steel. 49. Truss members are 100% wet with 100% wet lumber and 100% wet steel.  
50. Truss members are 100% wet with 100% wet lumber and 100% wet steel. 51. Truss members are 100% wet with 100% wet lumber and 100% wet steel.  
52. Truss members are 100% wet with 100% wet lumber and 100% wet steel. 53. Truss members are 100% wet with 100% wet lumber and 100% wet steel.  
54. Truss members are 100% wet with 100% wet lumber and 100% wet steel. 55. Truss members are 100% wet with 100% wet lumber and 100% wet steel.  
56. Truss members are 100% wet with 100% wet lumber and 100% wet steel. 57. Truss members are 100% wet with 100% wet lumber and 100% wet steel.  
58. Truss members are 100% wet with 100% wet lumber and 100% wet steel. 59. Truss members are 100% wet with 100% wet lumber and 100% wet steel.  
60. Truss members are 100% wet with 100% wet lumber and 100% wet steel. 61. Truss members are 100% wet with 100% wet lumber and 100% wet steel.  
62. Truss members are 100% wet with 100% wet lumber and 100% wet steel. 63. Truss members are 100% wet with 100% wet lumber and 100% wet steel.  
64. Truss members are 100% wet with 100% wet lumber and 100% wet steel. 65. Truss members are 100% wet with 100% wet lumber and 100% wet steel.  
66. Truss members are 100% wet with 100% wet lumber and 100% wet steel. 67. Truss members are 100% wet with 100% wet lumber and 100% wet steel.  
68. Truss members are 100% wet with 100% wet lumber and 100% wet steel. 69. Truss members are 100% wet with 100% wet lumber and 100% wet steel.  
70. Truss members are 100% wet with 100% wet lumber and 100% wet steel. 71. Truss members are 100% wet with 100% wet lumber and 100% wet steel.  
72. Truss members are 100% wet with 100% wet lumber and 100% wet steel. 73. Truss members are 100% wet with 100% wet lumber and 100% wet steel.  
74. Truss members are 100% wet with 100% wet lumber and 100% wet steel. 75. Truss members are 100% wet with 100% wet lumber and 100% wet steel.  
76. Truss members are 100% wet with 100% wet lumber and 100% wet steel. 77. Truss members are 100% wet with 100% wet lumber and 100% wet steel.  
78. Truss members are 100% wet with 100% wet lumber and 100% wet steel. 79. Truss members are 100% wet with 100% wet lumber and 100% wet steel.  
80. Truss members are 100% wet with 100% wet lumber and 100% wet steel. 81. Truss members are 100% wet with 100% wet lumber and 100% wet steel.  
82. Truss members are 100% wet with 100% wet lumber and 100% wet steel. 83. Truss members are 100% wet with 100% wet lumber and 100% wet steel.  
84. Truss members are 100% wet with 100% wet lumber and 100% wet steel. 85. Truss members are 100% wet with 100% wet lumber and 100% wet steel.  
86. Truss members are 100% wet with 100% wet lumber and 100% wet steel. 87. Truss members are 100% wet with 100% wet lumber and 100% wet steel.  
88. Truss members are 100% wet with 100% wet lumber and 100% wet steel. 89. Truss members are 100% wet with 100% wet lumber and 100% wet steel.  
90. Truss members are 100% wet with 100% wet lumber and 100% wet steel. 91. Truss members are 100% wet with 100% wet lumber and 100% wet steel.  
92. Truss members are 100% wet with 100% wet lumber and 100% wet steel. 93. Truss members are 100% wet with 100% wet lumber and 100% wet steel.  
94. Truss members are 100% wet with 100% wet lumber and 100% wet steel. 95. Truss members are 100% wet with 100% wet lumber and 100% wet steel.  
96. Truss members are 100% wet with 100% wet lumber and 100% wet steel. 97. Truss members are 100% wet with 100% wet lumber and 100% wet steel.  
98. Truss members are 100% wet with 100% wet lumber and 100% wet steel. 99. Truss members are 100% wet with 100% wet lumber and 100% wet steel.  
100. Truss members are 100% wet with 100% wet lumber and 100% wet steel. 101. Truss members are 100% wet with 100% wet lumber and 100% wet steel.  
102. Truss members are 100% wet with 100% wet lumber and 100% wet steel. 103. Truss members are 100% wet with 100% wet lumber and 100% wet steel.  
104. Truss members are 100% wet with 100% wet lumber and 100% wet steel. 105. Truss members are 100% wet with 100% wet lumber and 100% wet steel.  
106. Truss members are 100% wet with 100% wet lumber and 100% wet steel. 107. Truss members are 100% wet with 100% wet lumber and 100% wet steel.  
108. Truss members are 100% wet with 100% wet lumber and 100% wet steel. 109. Truss members are 100% wet with 100% wet lumber and 100% wet steel.  
110. Truss members are 100% wet with 100% wet lumber and 100% wet steel. 111. Truss members are 100% wet with 100% wet lumber and 100% wet steel.  
112. Truss members are 100% wet with 100% wet lumber and 100% wet steel. 113. Truss members are 100% wet with 100% wet lumber and 100% wet steel.  
114. Truss members are 100% wet with 100% wet lumber and 100% wet steel. 115. Truss members are 100% wet with 100% wet lumber and 100% wet steel.  
116. Truss members are 100% wet with 100% wet lumber and 100% wet steel. 117. Truss members are 100% wet with 100% wet lumber and 100% wet steel.  
118. Truss members are 100% wet with 100% wet lumber and 100% wet steel. 119. Truss members are 100% wet with 100% wet lumber and 100% wet steel.  
120. Truss members are 100% wet with 100% wet lumber and 100% wet steel. 121. Truss members are 100% wet with 100% wet lumber and 100% wet steel.  
122. Truss members are 100% wet with 100% wet lumber and 100% wet steel. 123. Truss members are 100% wet with 100% wet lumber and 100% wet steel.  
124. Truss members are 100% wet with 100% wet lumber and 100% wet steel. 125. Truss members are 100% wet with 100% wet lumber and 100% wet steel.  
126. Truss members are 100% wet with 100% wet lumber and 100% wet steel. 127. Truss members are 100% wet with 100% wet lumber and 100% wet steel.  
128. Truss members are 100% wet with 100% wet lumber and 100% wet steel. 129. Truss members are 100% wet with 100% wet lumber and 100% wet steel.  
130. Truss members are 100% wet with 100% wet lumber and 100% wet steel. 131. Truss members are 100% wet with 100% wet lumber and 100% wet steel.  
132. Truss members are 100% wet with 100% wet lumber and 100% wet steel. 133. Truss members are 100% wet with 100% wet lumber and 100% wet steel.  
134. Truss members are 100% wet with 100% wet lumber and 100% wet steel. 135. Truss members are 100% wet with 100% wet lumber and 100% wet steel.  
136. Truss members are 100% wet with 100% wet lumber and 100% wet steel. 137. Truss members are 100% wet with 100% wet lumber and 100% wet steel.  
138. Truss members are 100% wet with 100% wet lumber and 100% wet steel. 139. Truss members are 100% wet with 100% wet lumber and 100% wet steel.  
140. Truss members are 100% wet with 100% wet lumber and 100% wet steel. 141. Truss members are 100% wet with 100% wet lumber and 100% wet steel.  
142. Truss members are 100% wet with 100% wet lumber and 100% wet steel. 143. Truss members are 100% wet with 100% wet lumber and 100% wet steel.  
144. Truss members are 100% wet with 100% wet lumber and 100% wet steel. 145. Truss members are 100% wet with 100% wet lumber and 100% wet steel.  
146. Truss members are 100% wet with 100% wet lumber and 100% wet steel. 147. Truss members are 100% wet with 100% wet lumber and 100% wet steel.  
148. Truss members are 100% wet with 100% wet lumber and 100% wet steel. 149. Truss members are 100% wet with 100% wet lumber and 100% wet steel.  
150. Truss members are 100% wet with 100% wet lumber and 100% wet steel. 151. Truss members are 100% wet with 100% wet lumber and 100% wet steel.  
152. Truss members are 100% wet with 100% wet lumber and 100% wet steel. 153. Truss members are 100% wet with 100% wet lumber and 100% wet steel.  
154. Truss members are 100% wet with 100% wet lumber and 100% wet steel. 155. Truss members are 100% wet with 100% wet lumber and 100% wet steel.  
156. Truss members are 100% wet with 100% wet lumber and 100% wet steel. 157. Truss members are 100% wet with 100% wet lumber and 100% wet steel.  
158. Truss members are 100% wet with 100% wet lumber and 100% wet steel. 159. Truss members are 100% wet with 100% wet lumber and 100% wet steel.  
160. Truss members are 100% wet with 100% wet lumber and 100% wet steel. 161. Truss members are 100% wet with 100% wet lumber and 100% wet steel.  
162. Truss members are 100% wet with 100% wet lumber and 100% wet steel. 163. Truss members are 100% wet with 100% wet lumber and 100% wet steel.  
164. Truss members are 100% wet with 100% wet lumber and 100% wet steel. 165. Truss members are 100% wet with 100% wet lumber and 100% wet steel.  
166. Truss members are 100% wet with 100% wet lumber and 100% wet steel. 167. Truss members are 100% wet with 100% wet lumber and 100% wet steel.  
168. Truss members are 100% wet with 100% wet lumber and 100% wet steel. 169. Truss members are 100% wet with 100% wet lumber and 100% wet steel.  
170. Truss members are 100% wet with 100% wet lumber and 100% wet steel. 171. Truss members are 100% wet with 100% wet lumber and 100% wet steel.  
172. Truss members are 100% wet with 100% wet lumber and 100% wet steel. 173. Truss members are 100% wet with 100% wet lumber and 100% wet steel.  
174. Truss members are 100% wet with 100% wet lumber and 100% wet steel. 175. Truss members are 100% wet with 100% wet lumber and 100% wet steel.  
176. Truss members are 100% wet with 100% wet lumber and 100% wet steel. 177. Truss members are 100% wet with 100% wet lumber and 100% wet steel.  
178. Truss members are 100% wet with 100% wet lumber and 100% wet steel. 179. Truss members are 100% wet with 100% wet lumber and 100% wet steel.  
180. Truss members are 100% wet with 100% wet lumber and 100% wet steel. 181. Truss members are 100% wet with 100% wet lumber and 100% wet steel.  
182. Truss members are 100% wet with 100% wet lumber and 100% wet steel. 183. Truss members are 100% wet with 100% wet lumber and 100% wet steel.  
184. Truss members are 100% wet with 100% wet lumber and 100% wet steel. 185. Truss members are 100% wet with 100% wet lumber and 100% wet steel.  
186. Truss members are 100% wet with 100% wet lumber and 100% wet steel. 187. Truss members are 100% wet with 100% wet lumber and 100% wet steel.  
188. Truss members are 100% wet with 100% wet lumber and 100% wet steel. 189. Truss members are 100% wet with 100% wet lumber and 100% wet steel.  
190. Truss members are 100% wet with 100% wet lumber and 100% wet steel. 191. Truss members are 100% wet with 100% wet lumber and 100% wet steel.  
192. Truss members are 100% wet with 100% wet lumber and 100% wet steel. 193. Truss members are 100% wet with 100% wet lumber and 100% wet steel.  
194. Truss members are 100% wet with 100% wet lumber and 100% wet steel. 195. Truss members are 100% wet with 100% wet lumber and 100% wet steel.  
196. Truss members are 100% wet with 100% wet lumber and 100% wet steel. 197. Truss members are 100% wet with 100% wet lumber and 100% wet steel.  
198. Truss members are 100% wet with 100% wet lumber and 100% wet steel. 199. Truss members are 100% wet with 100% wet lumber and 100% wet steel.  
200. Truss members are 100% wet with 100% wet lumber and 100% wet steel. 201. Truss members are 100% wet with 100% wet lumber and 100% wet steel.  
202. Truss members are 100% wet with 100% wet lumber and 100% wet steel. 203. Truss members are 100% wet with 100% wet lumber and 100% wet steel.  
204. Truss members are 100% wet with 100% wet lumber and 100% wet steel. 205. Truss members are 100% wet with 100% wet lumber and 100% wet steel.  
206. Truss members are 100% wet with 100% wet lumber and 100% wet steel. 207. Truss members are 100% wet with 100% wet lumber and 100% wet steel.  
208. Truss members are 100% wet with 100% wet lumber and 100% wet steel. 209. Truss members are 100% wet with 100% wet lumber and 100% wet steel.  
210. Truss members are 100% wet with 100% wet lumber and 100% wet steel. 211. Truss members are 100% wet with 100% wet lumber and 100% wet steel.  
212. Truss members are 100% wet with 100% wet lumber and 100% wet steel. 213. Truss members are 100% wet with 100% wet lumber and 100% wet steel.  
214. Truss members are 100% wet with 100% wet lumber and 100% wet steel. 215. Truss members are 100% wet with 100% wet lumber and 100% wet steel.  
216. Truss members are 100% wet with 100% wet lumber and 100% wet steel. 217. Truss members are 100% wet with 100% wet lumber and 100% wet steel.  
218. Truss members are 100% wet with 100% wet lumber and 100% wet steel. 219. Truss members are 100% wet with 100% wet lumber and 100% wet steel.  
220. Truss members are 100% wet with 100% wet lumber and 100% wet steel. 221. Truss members are 100% wet with 100% wet lumber and 100% wet steel.  
222. Truss members are 100% wet with 100% wet lumber and 100% wet steel. 223. Truss members are 100% wet with 100% wet lumber and 100% wet steel.  
224. Truss members are 100% wet with 100% wet lumber and 100% wet steel. 225. Truss members are 100% wet with 100% wet lumber and 100% wet steel.  
226. Truss members are 100% wet with 100% wet lumber and 100% wet steel. 227. Truss members are 100% wet with 100% wet lumber and 100% wet steel.  
228. Truss members are 100% wet with 100% wet lumber and 100% wet steel. 229. Truss members are 100% wet with 100% wet lumber and 100% wet steel.  
230. Truss members are 100% wet with 100% wet lumber and 100% wet steel. 231. Truss members are 100% wet with 100% wet lumber and 100% wet steel.  
232. Truss members are 100% wet with 100% wet lumber and 100% wet steel. 233. Truss members are 100% wet with 100% wet lumber and 100% wet steel.  
234. Truss members are 100% wet with 100% wet lumber and 100% wet steel. 235. Truss members are 100% wet with 100% wet lumber and 100% wet steel.  
236. Truss members are 100% wet with 100% wet lumber and 100% wet steel. 237. Truss members are 100% wet with 100% wet lumber and 100% wet steel.  
238. Truss members are 100% wet with 100% wet lumber and 100% wet steel. 239. Truss members are 100% wet with 100% wet lumber and 100% wet steel.  
240. Truss members are 100% wet with 100% wet lumber and 100% wet steel. 241. Truss members are 100% wet with 100% wet lumber and 100% wet steel.  
242. Truss members are 100% wet with 100% wet lumber and 100% wet steel. 243. Truss members are 100% wet with 100% wet lumber and 100% wet steel.  
244. Truss members are 100% wet with 100% wet lumber and 100% wet steel. 245. Truss members are 100% wet with 100% wet lumber and 100% wet steel.  
246. Truss members are 100% wet with 100% wet lumber and 100% wet steel. 247. Truss members are 100% wet with 100% wet lumber and 100% wet steel.  
248. Truss members are 100% wet with 100% wet lumber and 100% wet steel. 249. Truss members are 100% wet with 100% wet lumber and 100% wet steel.  
250. Truss members are 100% wet with 100% wet lumber and 100% wet steel. 251. Truss members are 100% wet with 100% wet lumber and 100% wet steel.  
252. Truss members are 100% wet with 100% wet lumber and 100% wet steel. 253. Truss members are 100% wet with 100% wet lumber and 100% wet steel.  
254. Truss members are 100% wet with 100% wet lumber and 100% wet steel. 255. Truss members are 100% wet with 100% wet lumber and 100% wet steel.  
256. Truss members are 100% wet with 100% wet lumber and 100% wet steel. 257. Truss members are 100% wet with 100% wet lumber and 100% wet steel.  
258. Truss members are 100% wet with 100% wet lumber and 100% wet steel. 259. Truss members are 100% wet with 100% wet lumber and 100% wet steel.  
260. Truss members are 100% wet with 100% wet lumber and 100% wet steel. 261. Truss members are 100% wet with 100% wet lumber and 100% wet steel.  
262. Truss members are 100% wet with 100% wet lumber and 100% wet steel. 263. Truss members are 100% wet with 100% wet lumber and 100% wet steel.  
264. Truss members are 100% wet with 100% wet lumber and 100% wet steel. 265. Truss members are 100% wet with 100% wet lumber and 100% wet steel.  
266. Truss members are 100% wet with 100% wet lumber and 100% wet steel. 267. Truss members are 100% wet with 100% wet lumber and 100% wet steel.  
268. Truss members are 100% wet with 100% wet lumber and 100% wet steel. 269. Truss members are 100% wet with 100% wet lumber and 100% wet steel.  
270. Truss members are 100% wet with 100% wet lumber and 100% wet steel. 271. Truss members are 100% wet with 100% wet lumber and 100% wet steel.  
272. Truss members are 100% wet with 100% wet lumber and 100% wet steel. 273. Truss members are 100% wet with 100% wet lumber and 100% wet steel.  
274. Truss members are 100% wet with 100% wet lumber and 100% wet steel. 275. Truss members are 100% wet with 100% wet lumber and 100% wet steel.  
276. Truss members are 100% wet with 100% wet lumber and 100% wet steel. 277. Truss members are 100% wet with 100% wet lumber and 100% wet steel.  
278. Truss members are 100% wet with 100% wet lumber and 100% wet steel. 279. Truss members are 100% wet with 100% wet lumber and 100% wet steel.  
280. Truss members are 100% wet with 100% wet lumber and 100% wet steel. 281. Truss members are 100% wet with 100% wet lumber and 100% wet steel.  
282. Truss members are 100% wet with 100% wet lumber and 100% wet steel. 283. Truss members are 100% wet with 100% wet lumber and 100% wet steel.  
284. Truss members are 100% wet with 100% wet lumber and 100% wet steel. 285. Truss members are 100% wet with 100% wet lumber and 100% wet steel.  
286. Truss members are 100% wet with 100% wet lumber and 100% wet steel. 287. Truss members are 100% wet with 100% wet lumber and 100% wet steel.  
288. Truss members are 100% wet with 100% wet lumber and 100% wet steel. 289. Truss members are 100% wet with 100% wet lumber and 100% wet steel.  
290. Truss members are 100% wet with 100% wet lumber and 100% wet steel. 291. Truss members are 100% wet with 100% wet lumber and 100% wet steel.  
292. Truss members are 100% wet with 100% wet lumber and 100% wet steel. 293. Truss members are 100% wet with 100% wet lumber and 100% wet steel.  
294. Truss members are 100% wet with 100% wet lumber and 100% wet steel. 295. Truss members are 100% wet with 100% wet lumber and 100% wet steel.  
296. Truss members are 100% wet with 100% wet lumber and 100% wet steel. 297. Truss members are 100% wet with 100% wet lumber and 100% wet steel.  
298. Truss members are 100% wet with 100% wet lumber and 100% wet steel. 299. Truss members are 100% wet with 100% wet lumber and 100% wet steel.  
300. Truss members are 100% wet with 100% wet lumber and 100% wet steel. 301. Truss members are 100% wet with 100% wet lumber and 100% wet steel.  
302. Truss members are 100% wet with 100% wet lumber and 100% wet steel. 303. Truss members are 100% wet with 100% wet lumber and 100% wet steel.  
304. Truss members are 100% wet with 100% wet lumber and 100% wet steel. 305. Truss members are 100% wet with 100% wet lumber and 100% wet steel.  
306. Truss members are 100% wet with 100% wet lumber and 100% wet steel. 307. Truss members are 100% wet with 100% wet lumber and 100% wet steel.  
308. Truss members are 100% wet with 100% wet lumber and 100% wet steel. 309. Truss members are 100% wet with 100% wet lumber and 100% wet steel.  
310. Truss members are 100% wet with 100% wet lumber and 100% wet steel. 311. Truss members are 100% wet with 100% wet lumber and 100% wet steel.  
312. Truss members are 100% wet with 100% wet lumber and 100% wet steel. 313. Truss members are 100% wet with 100% wet lumber and 100% wet steel.  
314. Truss members are 100% wet with 100% wet lumber and 100% wet steel. 315. Truss members are 100% wet with 100% wet lumber and 100% wet steel.  
316. Truss members are 100% wet with 100% wet lumber and 100% wet steel. 317. Truss members are 100% wet with 100% wet lumber and 100% wet steel.  
318. Truss members are 100% wet with 100% wet lumber and 100% wet steel. 319. Truss members are 100% wet with 100% wet lumber and 100% wet steel.  
320. Truss members are 100% wet with 100% wet lumber and 100% wet steel. 321. Truss members are 100% wet with 100% wet lumber and 100% wet steel.  
322. Truss members are 100% wet with 100% wet lumber and 100% wet steel. 323. Truss members are 100% wet with 100% wet lumber and 100% wet steel.  
324. Truss members are 100% wet with 100% wet lumber and 100% wet steel. 325. Truss members are 100% wet with 100% wet lumber and 100% wet steel.  
326. Truss members are 100% wet with 100% wet lumber and 100% wet steel. 327. Truss members are 100% wet with 100% wet lumber and 100% wet steel.  
328. Truss members are 100% wet with 100% wet lumber and 100% wet steel. 329. Truss members are 100% wet with 100% wet lumber and 100% wet steel.  
330. Truss members are 100% wet with 100% wet lumber and 100% wet steel. 331. Truss members are 100% wet with 100% wet lumber and 100% wet steel.  
332. Truss members are 100% wet with 100% wet lumber and 100% wet steel. 333. Truss members are 100% wet with 100% wet lumber and 100% wet steel.  
334. Truss members are 100% wet with 100% wet lumber and 100% wet steel. 335. Truss members are 100% wet with 100% wet lumber and 100% wet steel.  
336. Truss members are 100% wet with 100% wet lumber and 100% wet steel. 337. Truss members are 100% wet with 100% wet lumber and 100% wet steel.  
338. Truss members are 100% wet with 100% wet lumber and 100% wet steel. 339. Truss members are 100% wet with 100% wet lumber and 100% wet steel.  
340. Truss members are 1

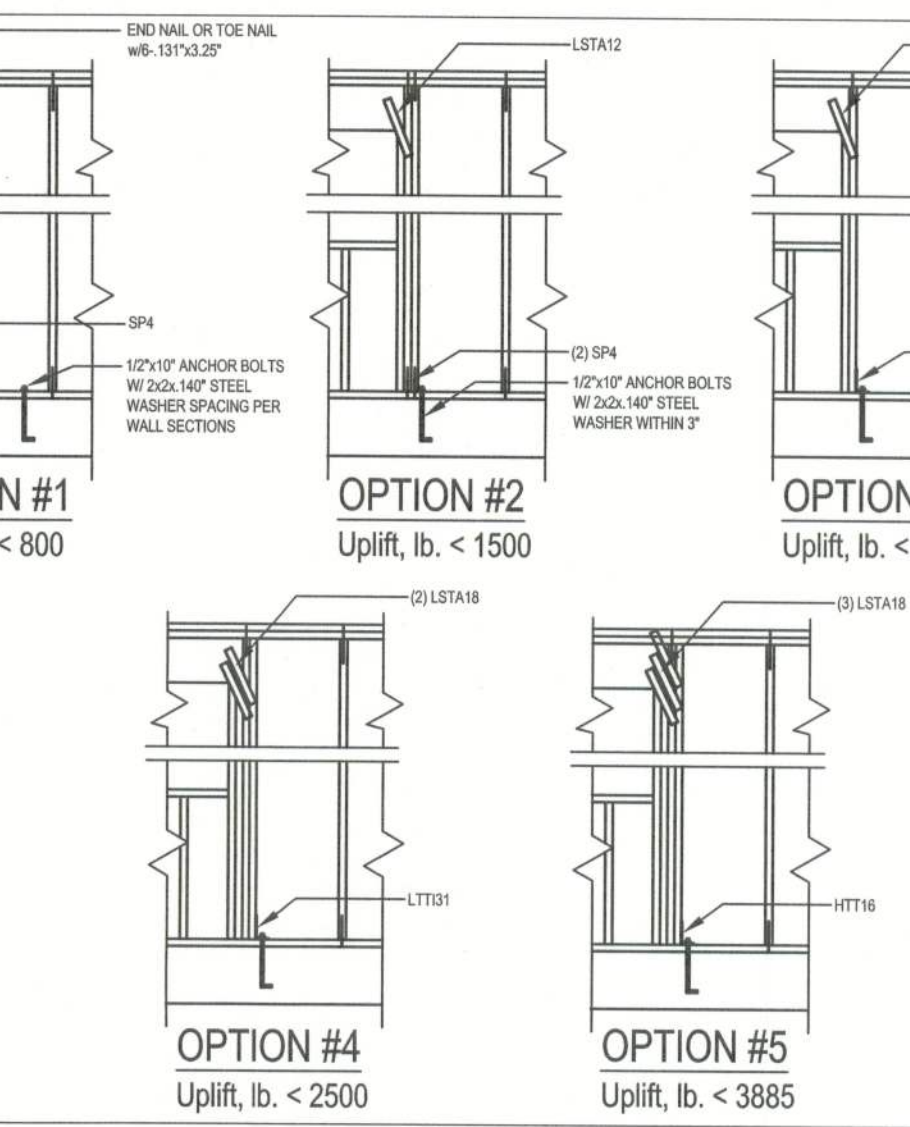


W13-TYPICAL HEADER SIZING & STRAPPING DETAIL  
SCALE: N.T.S. REV-22-AUG-03

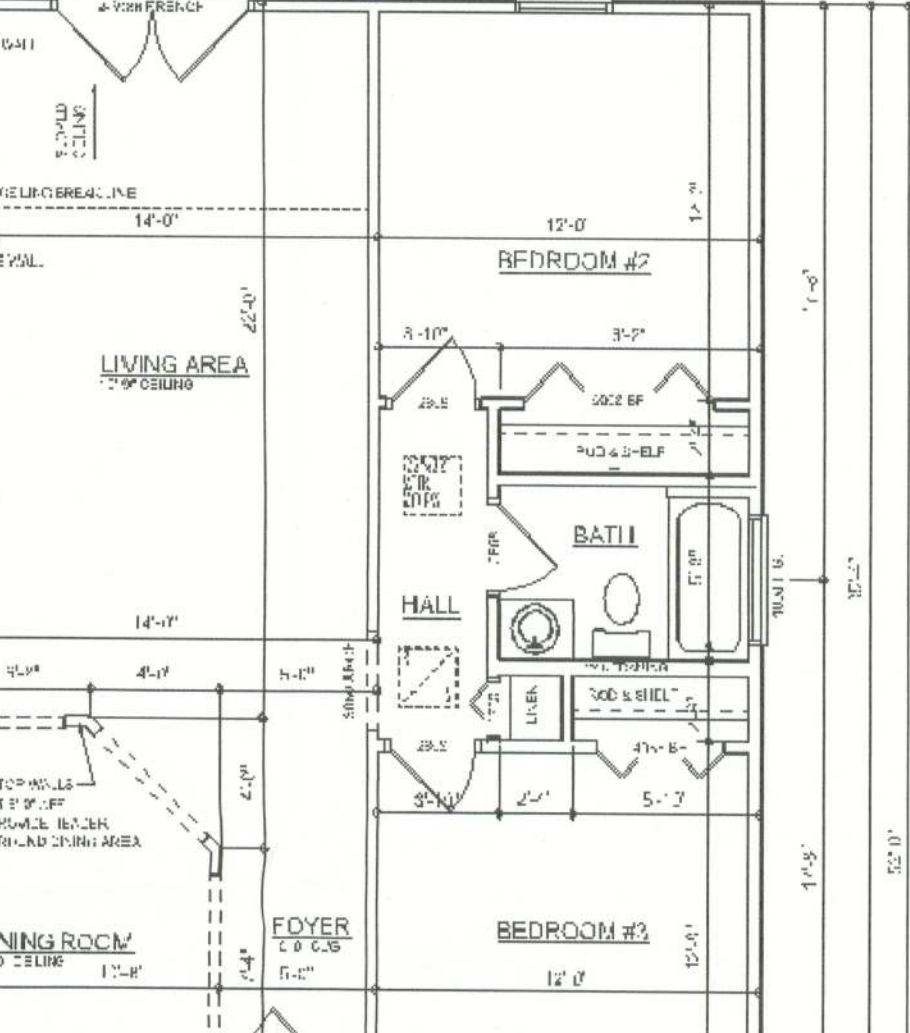


FLOOR PLAN

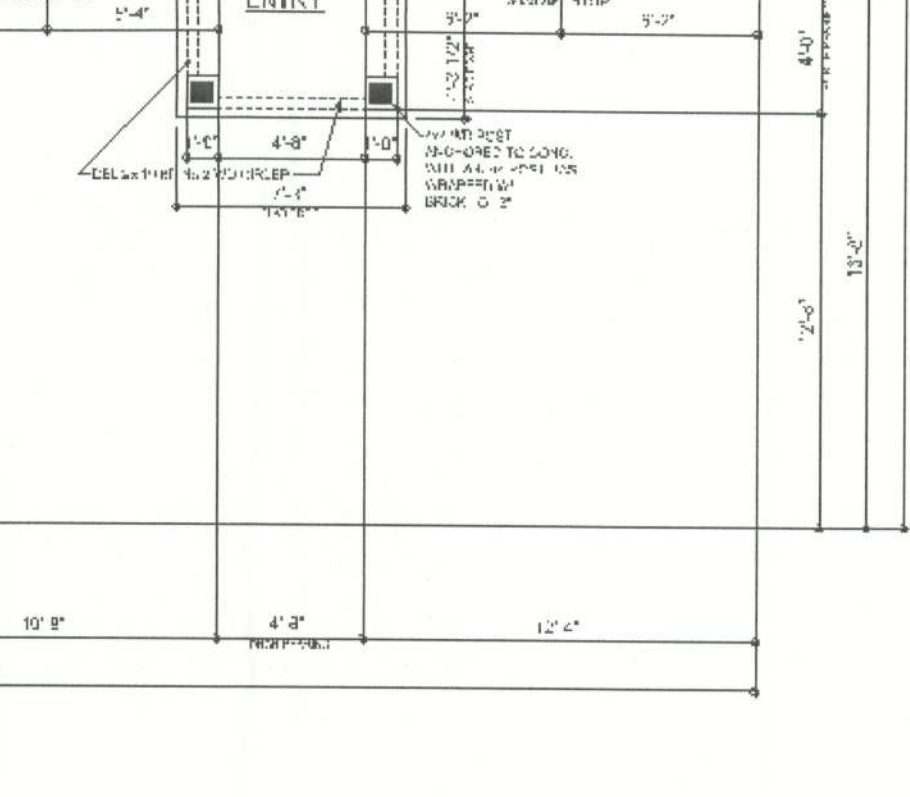
N4-WIND LOAD DESIGN DATA	
(Wind loads are per FBC 2004, Section 1609 for enclosed simple diaphragm buildings with mean roof height less than 60' or the least horizontal dimension; not staid on the upper half of an unobstructed 60' high hill with >10% slope.)	
Basic Wind Speed	110 MPH
Wind Exposure	B
Wind Importance Factor	1.0
Building Category	II
Internal pressure Coefficient	N/A (Enclosed)
Building not in the high velocity hurricane zone	
Building not in the wind-borne debris region	
Mean Roof Height	< 30 ft
Roof Angle	10-45 degrees
Components And Cladding Wind Pressures (FBC Table 1609 BAC)	
Zone	Effective Wind Area (ft <sup>2</sup> )
1	100
2	100
3	100
4	100
5	100
6	100
7	100
8	100
9	100
10	100
11	100
12	100
13	100
14	100
15	100
16	100
17	100
18	100
19	100
20	100
21	100
22	100
23	100
24	100
25	100
26	100
27	100
28	100
29	100
30	100
31	100
32	100
33	100
34	100
35	100
36	100
37	100
38	100
39	100
40	100
41	100
42	100
43	100
44	100
45	100
46	100
47	100
48	100
49	100
50	100
51	100
52	100
53	100
54	100
55	100
56	100
57	100
58	100
59	100
60	100
61	100
62	100
63	100
64	100
65	100
66	100
67	100
68	100
69	100
70	100
71	100
72	100
73	100
74	100
75	100
76	100
77	100
78	100
79	100
80	100
81	100
82	100
83	100
84	100
85	100
86	100
87	100
88	100
89	100
90	100
91	100
92	100
93	100
94	100
95	100
96	100
97	100
98	100
99	100
100	100



W14-TYPICAL HEADER SIZING & STRAPPING DETAIL  
SCALE: N.T.S. REV-22-AUG-03



W15-TYPICAL HEADER SIZING & STRAPPING DETAIL  
SCALE: N.T.S. REV-22-AUG-03



W16-TYPICAL HEADER SIZING & STRAPPING DETAIL  
SCALE: N.T.S. REV-22-AUG-03

N3-WINDLOAD ENGINEERS SCOPE OF WORK	
The wind load engineer is engineer of record for compliance of the structure to wind load requirements of FBC 2004, Section 1609. If trusses are used, the wind load engineer is not engineer of record for the trusses and did not design the trusses or delegate to the truss designer.	
<b>BUILDER'S RESPONSIBILITY:</b> The builder and owner are responsible for the following, which are specifically not part of the wind load engineer's scope of work.	
* Confirm that the foundation design & site conditions meet gravity load requirements (assume 1000 PSF bearing capacity unless visual observation or soils test proves otherwise).	
* Provide materials and construction techniques, which comply with FBC 2004 requirements for the stated wind velocity and design pressures.	
* Verify the truss engineering includes truss design, placement plans, temporary and permanent bracing details, truss-to-truss connections, and load reactions for all bearing locations.	
* Select uplift connections, walls, columns, and footings based on truss engineering bearing locations and reactions; including interior bearing walls.	
* Size headers for gravity loads; headers sized by the builder for gravity loads will also satisfy wind loads.	
<b>DOCUMENT CONTROL AND PRIORITY:</b> Structural requirements on S-1 control unless the building code or architectural sheets have more stringent requirements. Non-structural requirements on architectural sheets control. Specific requirements take precedence over general requirements. Revision control is by the latest signature date and is the responsibility of the builder.	
<b>COPYRIGHTS AND PROPERTY RIGHTS:</b> Mark Disoway, P.E. hereby expressly reserves its common law copyrights and property right in these instruments of service. This document is not to be reproduced, altered or copied in any form or manner without first the express written permission and consent of Mark Disoway.	
<b>CERTIFICATION:</b> The attached plans and "Windload Engineering", sheet S-1, comply with FBC 2004, Section 1609 wind loads, to the best of my knowledge.	
<b>LIMITATION:</b> This design is valid for one building, at specified location. This drawing is not valid for construction unless raised as a revision.	

LTT208

**Load Bearing Header Sizing Methods (BY BUILDER)**

1. Determine header size from FBC 2004, Tables 2308.3 A, B, & C, or 2308.5.

2. Use supplier published data or Southern pine span tables.

3. For engineered lumber beams have suppliers engineer size beam.

**Jack Studs and King Studs (BY BUILDER)**

4. Lookup jack studs from FBC 2004, Tables 2308.3 A, B, & C, or 2308.5.

5. Use one jack stud for every 3000 lb vertical load.

6. Total king plus jack studs = studs needed to be there if no opening was there.

**Header Uplift Connections (BY BUILDER)**

7. Calculate the uplift at each end of the header by summing the moments of all truss uplifts and dividing by the length of the header.

8. Select header connections from table below or mfg. catalog to connect header to stud (top connection) and stud to foundation (bottom connection).

Option #	Uplift, lb.	Top Connector	Bottom Connector
#1	< 800	End nail or toe nail w/8-131"x3.25"	SP4, 6-10d x 1 1/2"
#2	< 1500	LSTA12, 10-10d	(2) SP4, 6-10d x 1 1/2"
#3	< 1750	LSTA18, 14-10d	HT500, 18-10d x 1 1/2"
#4	< 2500	(2) LSTA18, 14-10d	LT101, 18-10d x 1 1/2"
#5	< 3885	(2) LSTA18, 14-10d	HT500, 18-10d x 1 1/2"

Uplift greater than 3885 lb requires engineering design.

**FBC2004, TABLE 2308.3A**

Header Spacing For Exterior Bearing Walls  
Supporting Roof/Ceiling (20psf+20psf)

Header Spacing (ft)	Building Width / Truss Span (ft)			
	Header Spacing (ft)			
	Span	Span	Span	Span
2-2x4	3-6	1	3-2	1
2-2x6	5-5	1	4-8	1
2-2x8	6-10	1	5-11	2
2-2x10	8-5	2	7-3	2
2-2x12	9-8	2	8	2
2-2x14	10-11	2	9-10	2
2-2x16	11-12	2	10-11	2
2-2x18	12-13	2	11-12	2
2-2x20	13-14	2	12-13	2

NOTES: N<sub>J</sub> = Number of jack studs required to support each end. Building width is measured perpendicular to the ridge. For widths between those shown, spans may be interpolated. Spans are based on uniform loads on header.