

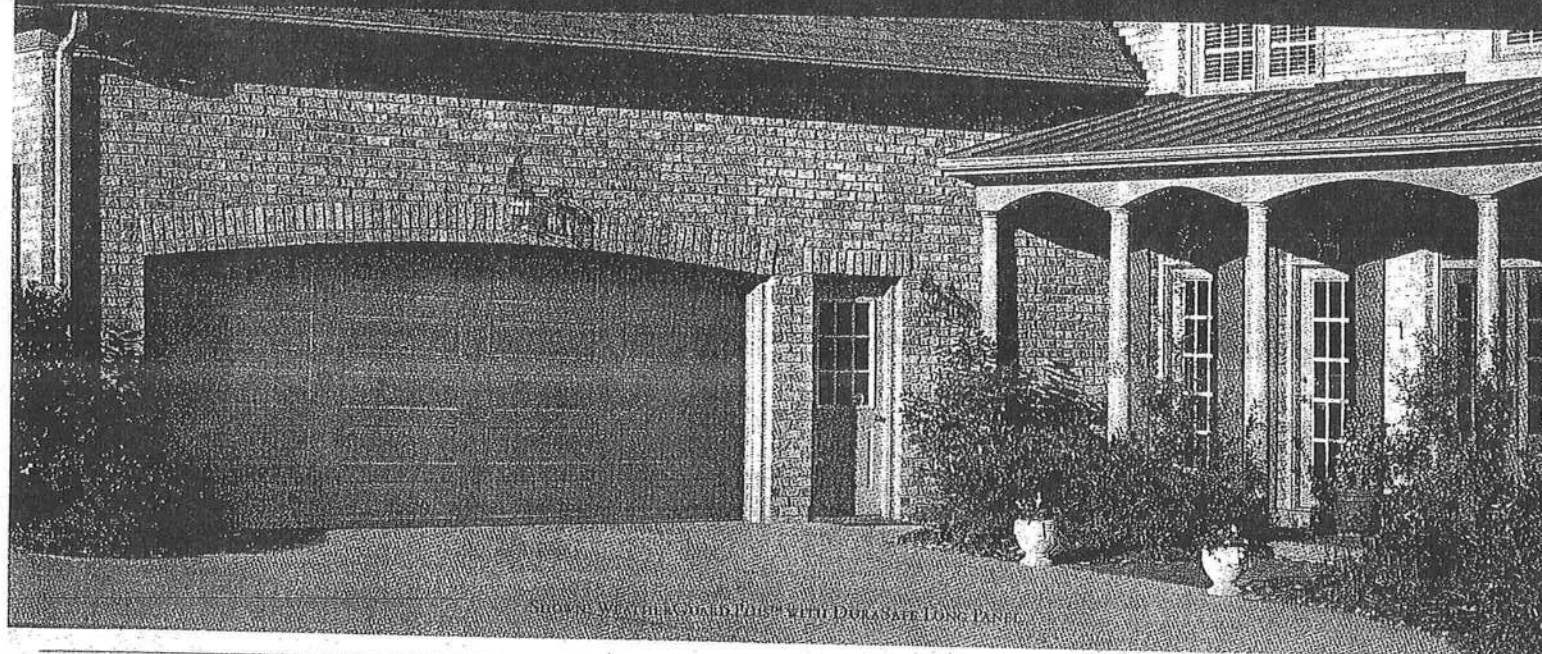
Amarr®

GARAGE DOORS

BEST

WEATHERGUARD™ SERIES

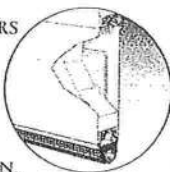
FEATURING OUR **DuraSafe System**



SHOWN: WEATHERGUARD PLUS™ WITH DURASAFE LONG PANEL

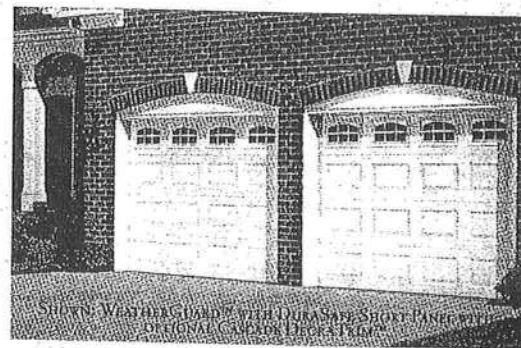
WEATHERGUARD PLUS™ WITH **DuraSafe**

THE WEATHERGUARD PLUS OFFERS DISCERNING HOMEOWNERS A MASTERFUL COMBINATION OF PREMIUM FEATURES. SUPERIOR TRIPLE-LAYER CONSTRUCTION, 2" (5.1 CM) POLYSTYRENE INSULATION, AN R-VALUE OF 8.34, AND UNMATCHED BEAUTY PUT THE WEATHERGUARD PLUS AT THE TOP OF ITS CLASS.



WEATHERGUARD™ WITH **DuraSafe**

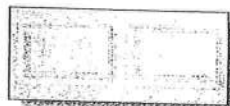
TOP-QUALITY TRIPLE-LAYER CONSTRUCTION AND 1 3/8" (3.5 CM) POLYSTYRENE INSULATION MAKE OUR WEATHERGUARD STEEL DOOR STRONG, QUIET, AND ENERGY EFFICIENT. FEATURING AN R-VALUE OF 5.73, THE WEATHERGUARD IS THE PERFECT ADDITION TO YOUR HOME FOR YEARS OF TROUBLE FREE SERVICE AND GREAT LOOKS.



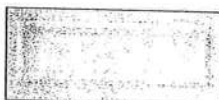
SHOWN: WEATHERGUARD™ WITH DURASAFE SHORT PANEL WITH ORIGINAL CAPADOCIA DECORATION™

DESIGN ELEMENTS

THE WEATHERGUARD SERIES DOORS ARE AVAILABLE WITH A RAISED SHORT, RAISED LONG, OR FLUSH PANEL DESIGN IN YOUR CHOICE OF FOUR COLORS.*



RAISED SHORT PANEL



RAISED LONG PANEL



FLUSH PANEL



WHITE



BROWN



ALMOND

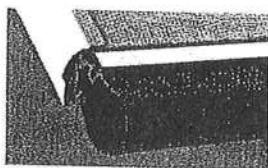


SANDTONE

* ACTUAL PAINT COLORS MAY VARY FROM SAMPLES SHOWN.

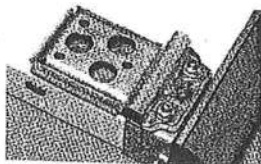
Bottom Seal

NEW ALUMINUM BOTTOM SEAL MEANS EASY AND FAST INSTALLATION AND MAINTENANCE... AS WELL AS A BETTER SEAL AGAINST THE ELEMENTS.



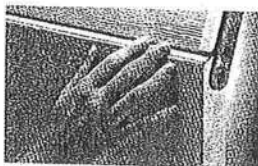
Bottom Bracket

NEW TAMPER RESISTANT BOTTOM BRACKET HELPS PREVENT ACCIDENTS, YET ALLOWS FOR ROLLER MAINTENANCE/CHANGE WITHOUT DISASSEMBLY. FULL LENGTH ROLLER TUBE PREVENTS SLIP-OUTS.



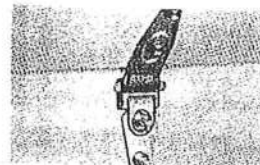
Door Sections

THE SECTION JOINT OF THE FUTURE: TODAY. NEW SECTION PROFILE ASSURES PINCH RESISTANCE BOTH INSIDE AND OUT, EXCEEDING INDUSTRY STANDARDS - NEITHER FINGERS NOR WEATHER GETS IN.



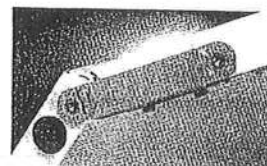
Center Hinge

FLUSH MOUNT INBOARD DESIGN CENTER HINGES PROVIDE PINCH RESISTANT PROTECTION AND A LOW PROFILE CLEAN LOOK ON THE INSIDE OF THE DOOR.



End Hinge

WITH MOST OF ITS ACTION HIDDEN INSIDE THE DOOR, OUR RE-ENGINEERED END HINGES LEAVE NO ROOM FOR EVEN THE SMALLEST FINGERS.



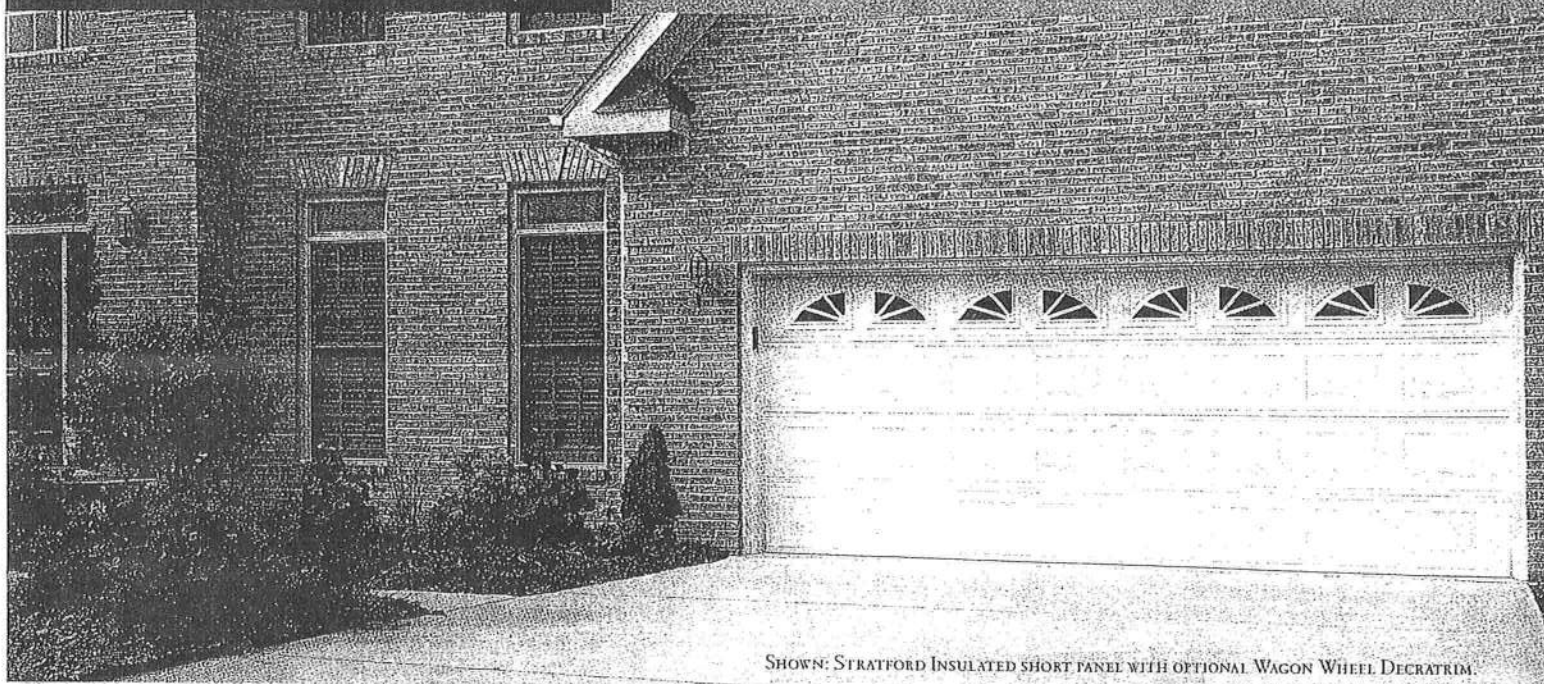
AMARR DURASAFE DOORS UNDER 8'9" WILL BE SUPPLIED WITH DURASAFE HARDWARE. DASMA STANDARDS FOR PINCH-RESISTANCE DO NOT APPLY TO DOORS OVER 8' HIGH SINCE THE POTENTIAL PINCH POINTS ARE ABOVE TYPICAL GRASPING HEIGHTS; AMARR DOORS OVER 8'9" ARE SUPPLIED WITH CONVENTIONAL HARDWARE. THE BOTTOM BRACKET, DOOR SECTIONS, CENTER HINGE AND END HINGE SHOWN ABOVE ARE PATENTED. DOORS SHOWN ARE ELECTRICALLY OPERATED. NON-ELECTRICALLY OPERATED DOORS SHOULD HAVE EXTERIOR AND INTERIOR LIFT HANDLES ATTACHED TO THE DOOR.

Amarr®

GARAGE DOORS

BASIC

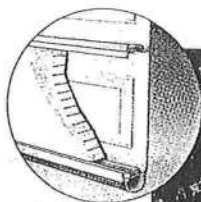
STRATFORD SERIES



SHOWN: STRATFORD INSULATED SHORT PANEL WITH OPTIONAL WAGON WHEEL DECORTRIM.

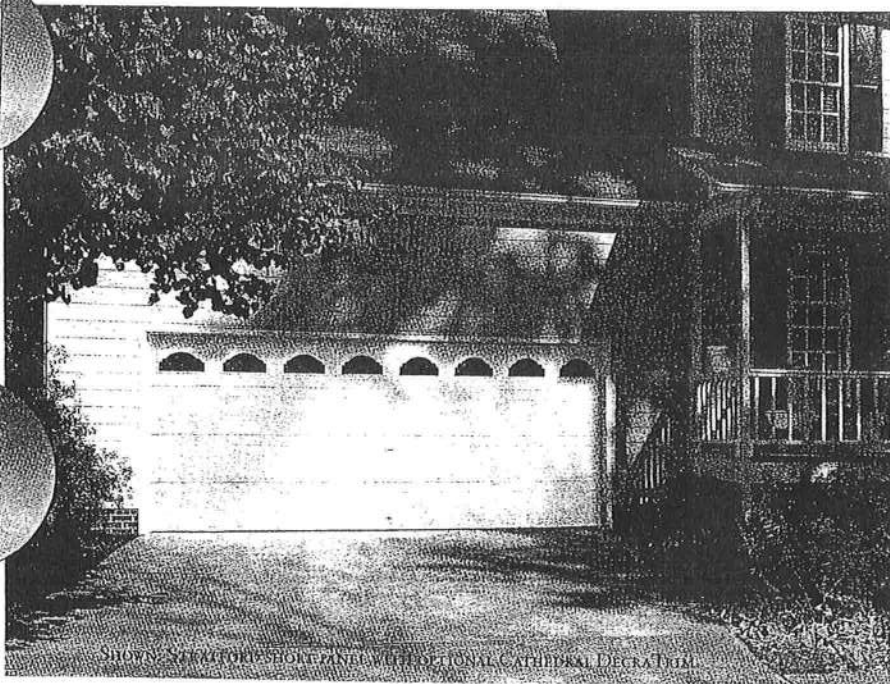
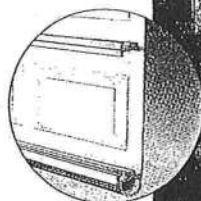
STRATFORD INSULATED

THE 2" (5.1 CM) THICK STRATFORD INSULATED PROVIDES HOMEOWNERS EXCELLENT THERMAL PROTECTION AND HANDSOME GOOD LOOKS. FEATURES INCLUDE DOUBLE-LAYER CONSTRUCTION OF STURDY 25-GAUGE STEEL, AND 1 7/16" (3.7 CM) POLYSTYRENE INSULATION WITH LAMINATED BACKING AND AN R-VALUE OF 5.65.



STRATFORD

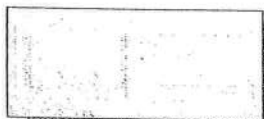
A SUPERLATIVE ADDITION TO ANY HOME, THE STRATFORD'S DURABLE SINGLE-LAYER CONSTRUCTION, 25-GAUGE STEEL, AND ATTRACTIVE DESIGN PROVIDE HOMEOWNERS WITH EXCEPTIONAL VALUE.



SHOWN: STRATFORD SHORT PANEL WITH OPTIONAL CATHEDRAL DECRA DOOR.

DESIGN ELEMENTS

THE STRATFORD SERIES DOORS ARE AVAILABLE WITH A RAISED SHORT PANEL DESIGN IN YOUR CHOICE OF THREE COLORS.*



RAISED SHORT PANEL



WHITE



ALMOND



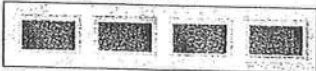
SANTONE

* ACTUAL PAINT COLORS MAY VARY FROM SAMPLES SHOWN.

DECRATrim Window Accents

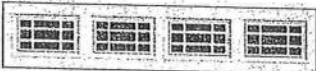
ADD VISUAL INTEREST TO YOUR WINDOWS WITH A VARIETY OF COLOR-MATCHED, EASY-TO-SNAP-IN DECRATrim INSERTS.

GLAZED WINDOW



SHORT PANEL NO INSERTS NOT AVAILABLE ON 15'8" (472.55 cm) 15'8" (472.52 cm)

PRAIRIE



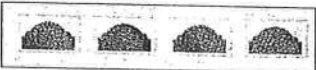
SHORT PANEL

CASCADE



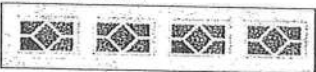
SHORT PANEL

CATHEDRAL



SHORT PANEL

WATERFORD



SHORT PANEL

WAGON WHEEL



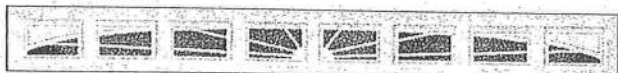
SHORT PANEL

SUNRAY



SHORT PANEL

FULL SUNRAY



SHORT PANEL

ONLY AVAILABLE ON 16' (487.68 cm) 17' (518.16 cm) 18' (548.64 cm)

DECRAGlass™ Windows

ADD A TOUCH OF ELEGANCE WITH TRANSLUCENT, TEMPERED DECRAGlass, FEATURING V-GROOVE ETCHING.

CHALET



BRASS CAME & ETCHED DESIGN

RIVIERA



V-GROOVE ETCHED DESIGN

VICTORIAN



V-GROOVE ETCHED DESIGN

DECRATrim and DECRAGlass Windows NOT AVAILABLE FOR 15'6" AND 15'8" SHORT PANEL DOORS.

THE AMARR PHILOSOPHY

SINCE 1951, WE HAVE SUCCESSFULLY RAISED THE STANDARDS OF QUALITY, VALUE, AND DEPENDABILITY IN OUR INDUSTRY. TODAY, WITH THE SAME PROMISE OF INDIVIDUAL ATTENTION AND GREAT VALUE FOR ALL OUR CUSTOMERS, WE REMAIN COMMITTED TO OFFERING PRODUCTS AND SERVICES THAT RAISE THOSE STANDARDS EVEN HIGHER.

Richard A. Brenner

RICHARD A. BRENNER,
PRESIDENT

PHOTOS AND DRAWINGS SHOWN MEET FUTURE DASMA 116 REQUIREMENTS. YOUR DOOR MAY BE SUPPLIED WITH REVER LIFT HANDLES. TO CONTINUE ITS PROGRAM OF QUALITY AND DESIGN IMPROVEMENTS, AMARR RESERVES THE RIGHT TO CHANGE SPECIFICATIONS AND DESIGNS WITHOUT NOTICE AND WITHOUT INCURRING OBLIGATIONS.

BASIC

STRATFORD SERIES

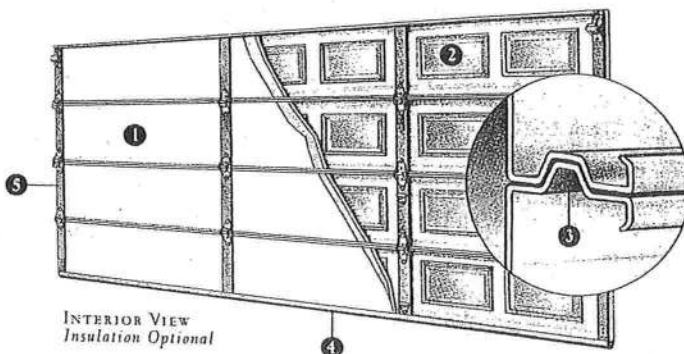
PRODUCT
CLASSIFICATION

BEST
WeatherGuard

BETTER
Heritage

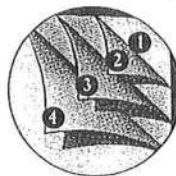
BASIC
Stratford

EVEN OUR MOST BASIC DOOR OFFERS YOU DURABLE, HEAVY-GAUGE STEEL CONSTRUCTION. AVAILABLE WITH OR WITHOUT INSULATION, THE STRATFORD SERIES ALSO ALLOWS YOU TO CUSTOMIZE WITH OUR BROAD SELECTION OF WINDOW AND TRIM OPTIONS.



- 1 STRATFORD INSULATED DOORS FEATURE AN EXTERIOR LAYER OF HEAVY-GAUGE STEEL AND AN INTERIOR LAYER OF INSULATION.
- 2 STRATFORD NON-INSULATED DOORS CONSIST OF A SINGLE-LAYER OF HEAVY-GAUGE STEEL.
- 3 TONGUE-AND-GROOVE JOINTS SEAL THE GAP BETWEEN SECTIONS MORE TIGHTLY THAN SHIP-LAP JOINTS. THEY ELIMINATE DRAFTS AND OFFER STABILITY AND SUPERIOR PROTECTION AGAINST THE ELEMENTS.
- 4 THE WEATHER SEAL, HELD IN PLACE WITH AN ALUMINUM RETAINER, PROVIDES A FLEXIBLE, CONTOURED VINYL SEAL BETWEEN THE DOOR AND FLOOR TO HELP PREVENT OUTSIDE AIR, DIRT, DUST, AND MOISTURE FROM SEEPING IN.
- 5 GALVANIZED END AND CENTER STILES ARE BOTH DURABLE AND FUNCTIONAL.

EVERY AMARR DOOR IS BUILT FOR GOOD



- 1 EVERY AMARR GARAGE DOOR IS CONSTRUCTED OF RUGGED, REAL GAUGE STEEL. BEWARE OF NOMINAL GAUGE STEEL NUMBERS.
 - 2 WE HELP PREVENT RUSTING WITH THE BEST PROCESS AVAILABLE: HOT-DIP GALVANIZING.
 - 3-4 AMARR DOORS FEATURE A TWO-STEP PAINT SYSTEM THAT INCLUDES (3) A PRIMER COAT AND (4) A TOUGH POLYESTER TOP-COAT THAT REQUIRES NO PAINTING.
- WARRANTED TO LAST: AMARR'S POWERFUL WARRANTIES COVER PAINT, FINISH, ADHESIVE, AND HARDWARE.

15-Year
LIMITED WARRANTY

THE STRATFORD SERIES FEATURES A LIMITED 15 YEAR WARRANTY ON PAINT AND FINISH, AND 1-YEAR ON HARDWARE.

Amarr
GARAGE DOORS

BUILT FOR GOOD.™

5931 GRASSY CREEK BLVD.
WINSTON-SALEM, NC 27105

336.744.5100 • 800.503.DOOR
Fax 336.744.0895 • www.amarr.com

YOUR LOCAL AMARR DEALER:

P. O. BOX 114
LAKE CITY, FL 32056-0114

DECRATrim Window Accents

ADD VISUAL INTEREST TO YOUR WINDOWS WITH A VARIETY OF COLOR-MATCHED, EASY-TO-SNAP-IN DECRATrim INSERTS AVAILABLE IN EITHER SHORT OR LONG PANEL DESIGNS.

GLAZED WINDOW



SHORT PANEL NO INSERTS
NOT AVAILABLE ON 15'6" (472.53 cm) 15'3" (471.52 cm)



LONG PANEL NO INSERTS*

PRAIRIE



SHORT PANEL



LONG PANEL*

CASCADE



SHORT PANEL



LONG PANEL*

CATHEDRAL

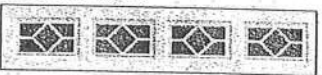


SHORT PANEL



LONG PANEL*

WATERFORD



SHORT PANEL

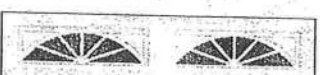


LONG PANEL*

WAGON WHEEL



SHORT PANEL

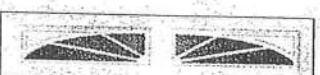


LONG PANEL*

SUNRAY



SHORT PANEL



LONG PANEL*

FULL SUNRAY



SHORT PANEL

ONLY AVAILABLE ON 16' (487.68 cm) 17' (518.16 cm) 18' (548.64 cm)



LONG PANEL*

ONLY AVAILABLE ON 15' (457.20 cm), 15'6" (472.11 cm), 15'8" (477.52 cm), 16' (487.68 cm), 17' (518.16 cm), 18' (548.64 cm)

DECRAGlass™ Windows

ADD A TOUCH OF ELEGANCE WITH TRANSLUCENT, TEMPERED DECRAGlass, FEATURING V-GROOVE ETCHING. (AVAILABLE IN SHORT OR LONG PANEL.)

CHALET



BRASS CAME & ETCHED DESIGN

RIVIERA



V-GROOVE ETCHED DESIGN

VICTORIAN



V-GROOVE ETCHED DESIGN

DECRATrim and DECRAGlass Windows NOT AVAILABLE FOR 15'6" AND 15'8" SHORT PANEL DOORS.

THE AMARR PHILOSOPHY

SINCE 1951, WE HAVE SUCCESSFULLY RAISED THE STANDARDS OF QUALITY, VALUE, AND DEPENDABILITY IN OUR INDUSTRY. TODAY, WITH THE SAME PROMISE OF INDIVIDUAL ATTENTION AND GREAT VALUE FOR ALL OUR CUSTOMERS, WE REMAIN COMMITTED TO OFFERING PRODUCTS AND SERVICES THAT RAISE THOSE STANDARDS EVEN HIGHER.

Richard A. Brenner

RICHARD A. BRENNER,
PRESIDENT

TO CONTINUE ITS PROGRAM OF QUALITY AND DESIGN IMPROVEMENTS, AMARR RESERVES THE RIGHT TO CHANGE SPECIFICATIONS AND DESIGNS WITHOUT NOTICE AND WITHOUT INCURRING OBLIGATIONS.

BEST

WEATHERGUARD™ SERIES

FEATURING OUR **DuraSafe System**

PRODUCT
CLASSIFICATION

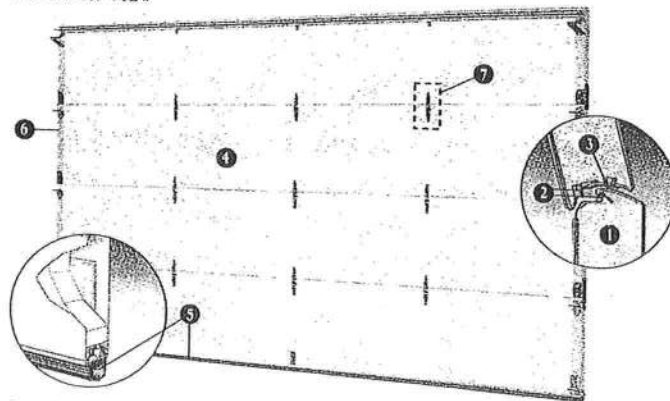
BEST
WeatherGuard

BETTER
Heritage

BASIC
Stratford

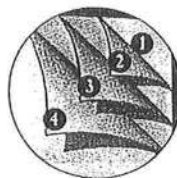
DURASAFE SYSTEM FEATURES INCLUDE INBOARD DESIGN CENTER HINGES AND END HINGES, NEW PINCH RESISTANT SECTIONS, AND TAMPER PROOF BOTTOM BRACKET. THESE FEATURES RESULT IN A NEW STATE OF THE ART DESIGN FOR OVERALL HOME-OWNER SAFETY, AS WELL AS A MORE FINISHED INTERIOR APPEARANCE.

INTERIOR VIEW



- 1 CFC-FREE AND ENVIRONMENTALLY SAFE POLYSTYRENE INSULATION PROVIDES AN ENERGY-SAVING BARRIER AGAINST EXTREME TEMPERATURES.
- 2 WEATHERGUARD PRO-BOND UNITES EXTERIOR AND INTERIOR STEEL SURFACES TO CREATE A THERMAL BARRIER AGAINST HEAT AND COLD.
- 3 EXCLUSIVE AMARR WEAR-SEAL FEATURES AN AIR-TIGHT THERMAL SEAL BETWEEN INDIVIDUAL DOOR SECTIONS, ELIMINATING DRAFTS AND EXTENDING THE LIFE OF YOUR DOOR.
- 4 A FINISHED INTERIOR OF PAINTED STEEL AND FLUSH HINGE DESIGN MAKES YOUR DOOR LOOK GREAT BOTH INSIDE AND OUT.
- 5 THE WEATHER SEAL, HELD IN PLACE WITH AN ALUMINUM RETAINER, PROVIDES A FLEXIBLE, CONTOURED VINYL SEAL BETWEEN THE DOOR AND FLOOR TO HELP PREVENT OUTSIDE AIR, DIRT, DUST, AND MOISTURE FROM SEEPING IN.
- 6 PAINTED END STILES ADD A FINISHED TOUCH TO YOUR GARAGE.
- 7 STEEL SUPPORT PLATES ARE LOCATED UNDER EACH HINGE LOCATION AND ARE PRE-PUNCHED FOR HINGE ATTACHMENT.

EVERY AMARR DOOR IS BUILT FOR GOOD



- 1 EVERY AMARR GARAGE DOOR IS CONSTRUCTED OF RUGGED, REAL GAUGE STEEL. BEWARE OF NOMINAL GAUGE STEEL NUMBERS.
 - 2 WE HELP PREVENT RUSTING WITH THE BEST PROCESS AVAILABLE: HOT-DIP GALVANIZING.
 - 3-4 AMARR DOORS FEATURE A TWO-STEP PAINT SYSTEM THAT INCLUDES (3) A PRIMER COAT AND (4) A TOUGH POLYESTER TOP-COAT THAT REQUIRES NO PAINTING.
- WARRANTED TO LAST: AMARR'S POWERFUL WARRANTIES COVER PAINT, FINISH, ADHESIVE, AND HARDWARE.

Lifetime
LIMITED WARRANTY

THE WEATHERGUARD PLUS COMES WITH A LIMITED LIFETIME WARRANTY ON PAINT, FINISH, AND HARDWARE.

THE WEATHERGUARD FEATURES A LIMITED LIFETIME WARRANTY ON PAINT AND FINISH, AND A 3-YEAR HARDWARE WARRANTY.

Amarr
GARAGE DOORS

BUILT FOR GOOD™

5931 GRASSY CREEK BLVD.
WINSTON-SALEM, NC 27105

336.744.5100 • 800.503.DOOR
Fax 336.744.0895 • www.amarr.com

YOUR LOCAL AMARR DEALER:

LAKE CITY GLASS

P. O. BOX 114

LAKE CITY, FL 32056-0114