

MAXIMUM ALLOWABLE
WIND SPEED

| RISK CATEGORY | WIND EXPOSURE CATEGORY | ULTIMATE WIND SPEED (MPH) | NOMINAL WIND SPEED (MPH) | MAXIMUM POST / RAFTER SPACING (FEET) | AVERAGE FASTENER SPACING ON-CENTERS ALONG RAFTERS OR PURLINS, AND POSTS OR GIRTS (INCHES) | | |
|---------------|------------------------|---------------------------|--------------------------|--------------------------------------|---|-------------------|--------------------|
| | | | | | INTERIOR POSTS/RAFTERS | END POSTS/RAFTERS | END POSTS OR GIRTS |
| I | C | 151 TO 160 | 88 TO 116 | 5.0 | 6 | 6 | 6 |
| | | 117 TO 139 | | 4.0 | 6 | | |

NOTES: 1. Specifications applicable to 26 gauge metal roof and wall panels fastened directly to 12" or 14" gauge steel lobe framing, or 18 gauge hot channel roof purlins.
2. Specifications applicable only for mean roof height of 20 feet or less, and roof slopes of 7" to 27" (5.12 to 6.12 pitch). Spacing requirements for other roof heights and/or slopes may vary.

GROUND ANCHOR SCHEDULE

| ULTIMATE WIND SPEED (mph) | 110 | 120 | 130 | 140 | 150 | 160 | 170 | 180 |
|---------------------------|-----|-----|-----|-----|-----|-----|-----|-----|
| 37 Anchor Detail 1D | | | | | | | | |
| 48" Anchor Detail 1C | | | | | | | | |
| 59" Anchor Detail 1C | | | | | | | | |
| 26 | | | | | | | | |
| 28 | | | | | | | | |
| 30 | | | | | | | | |

DETAILS 1C AND 1D SHOWN ON SHEET 4 OF 6

METAL CARPORT INSTALLATION PLANS AND DETAILS AND FRAMING AND FASTENER SPECIFICATIONS

FOR CONSTRUCTION IN THE STATE OF FLORIDA

PREPARED FOR:
CAROLINA CARPORTS, INC.
P.O. BOX 1253
DOBSON, NORTH CAROLINA 27007

PREPARED BY:
Bechtol Building
BECHTOL ENGINEERING AND TESTING, INC.
606 WEST NEW YORK AVENUE
DELAND, FLORIDA 32701

Certificate of Authorization No. 00005492

Code 12

THIS IS TO CERTIFY THAT THE CALCULATIONS AND SPECIFICATIONS HEREIN HAVE BEEN PREPARED BY THE UNDERSIGNED PROFESSIONAL ENGINEER AND ARE IN ACCORDANCE WITH THE REQUIREMENTS OF SECTION 1609 OF THE FLORIDA BUILDING CODE, EIGHTH EDITION (2003).

LOVE & PAPER
JOHN

BECHTEL ENGINEERING AND TESTING, INC.
605 WEST NEW YORK AVENUE
DELAND, FLORIDA 32710

SEASONAL ENGINEERING
CORPORATION

CAROLINA CARPORTS, INC.
GENERIC PLANS FOR USE IN THE STATE OF FLORIDA

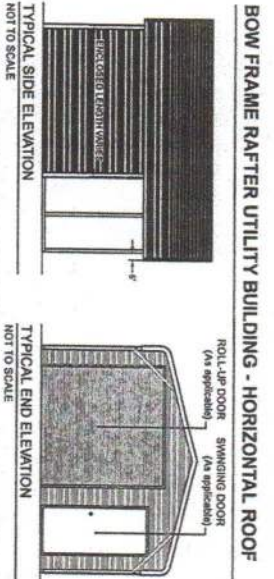
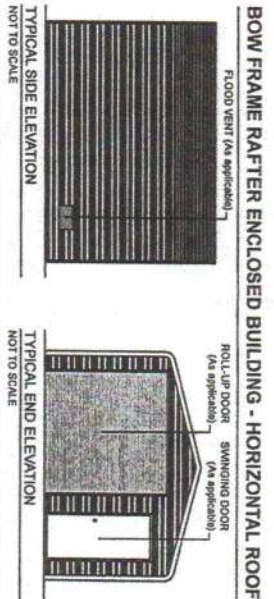
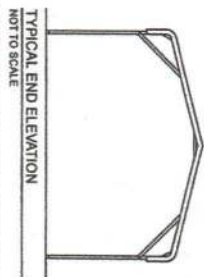
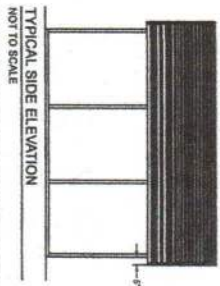
BECHTOL ENGINEERING AND TESTING, INC.
 10001 E. 160th St., Suite 200, Omaha, NE 68134
 (402) 426-1100 • Fax (402) 426-1101 • E-mail: info@bechtol.com

| | |
|-------|----------|
| DATE | 1/1/2024 |
| ITEM | NTS |
| QTY | 1 |
| UNIT | EA |
| PRICE | 0.00 |
| TOTAL | 0.00 |

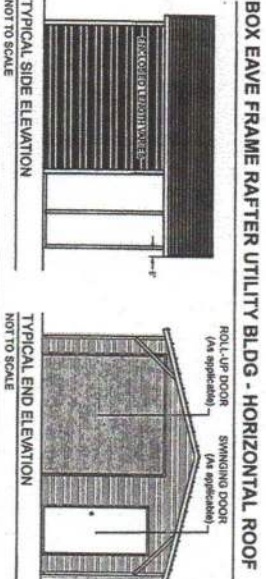
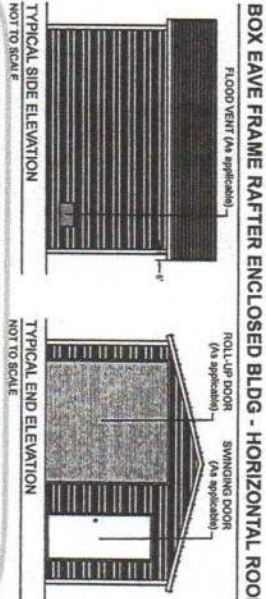
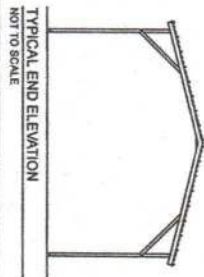
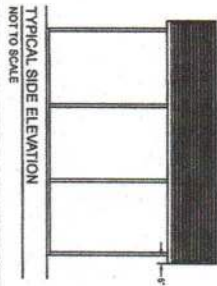
BECHTOL ENGINEERING AND TESTING, INC.
 10001 E. 160th St., Suite 200, Omaha, NE 68134
 (402) 426-1100 • Fax (402) 426-1101 • E-mail: info@bechtol.com

| | |
|-------------|----------|
| DATE | 1/1/2024 |
| ITEM | NTS |
| QTY | 1 |
| UNIT | EA |
| DESCRIPTION | 1/1/2024 |
| REVISION | 1/1/2024 |

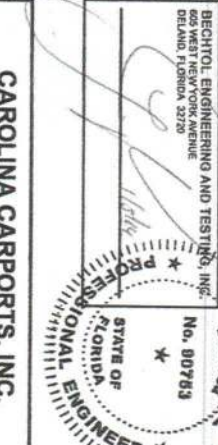
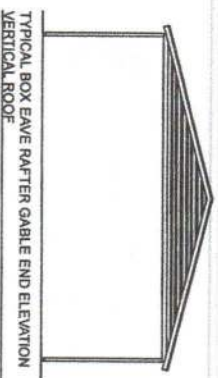
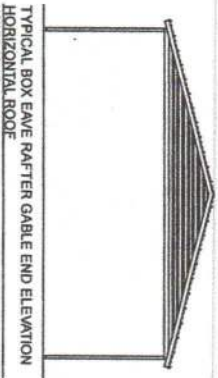
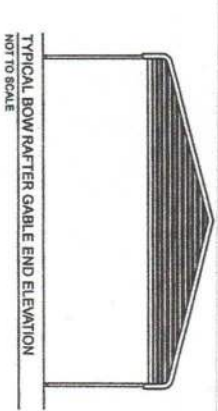
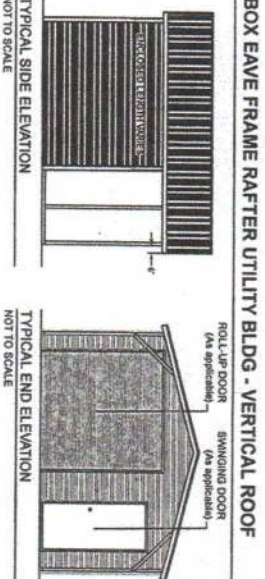
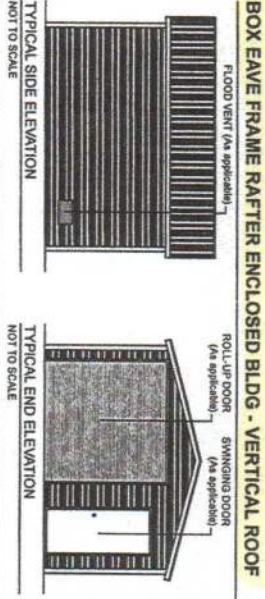
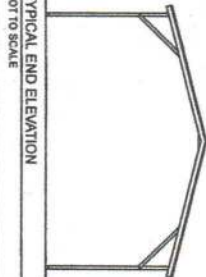
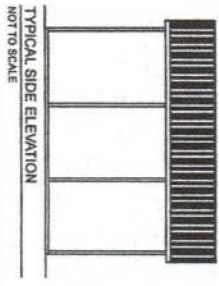
BOW FRAME RAFTER OPEN CARPORT - HORIZONTAL ROOF



BOX EAVE FRAME RAFTER OPEN CARPORT - HORIZONTAL ROOF



BOX EAVE FRAME RAFTER OPEN CARPORT - VERTICAL ROOF



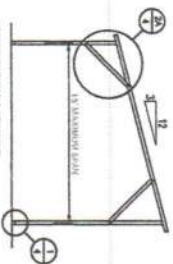
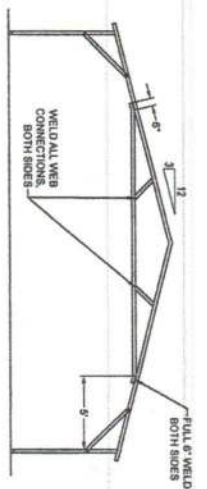
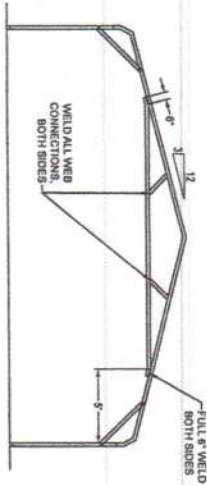
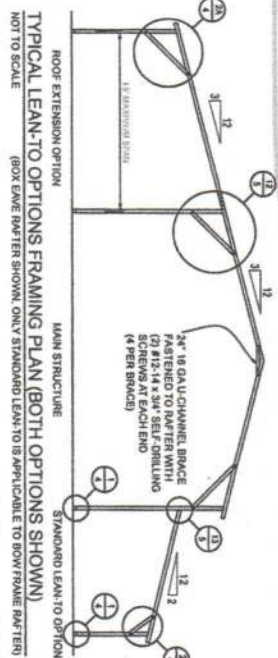
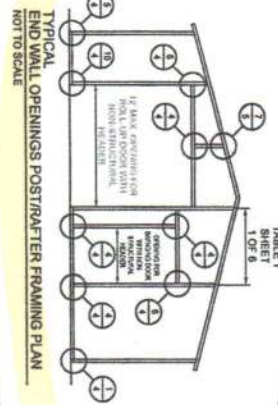
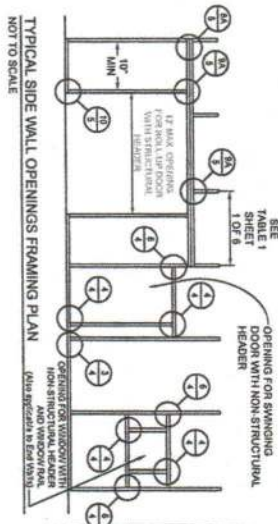
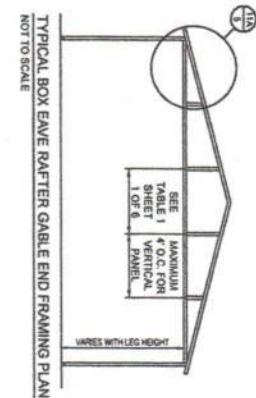
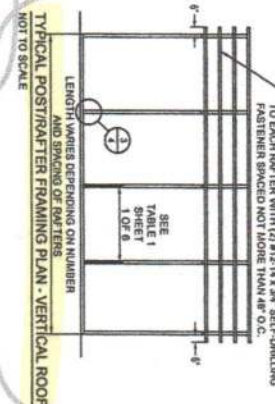
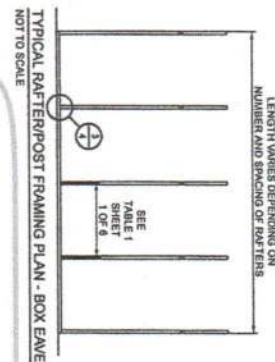
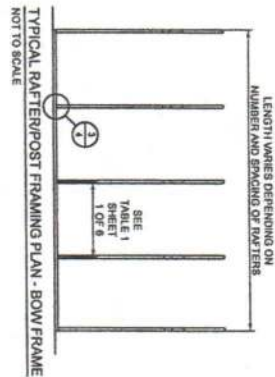
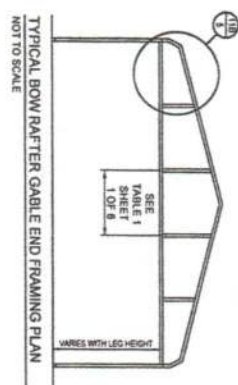
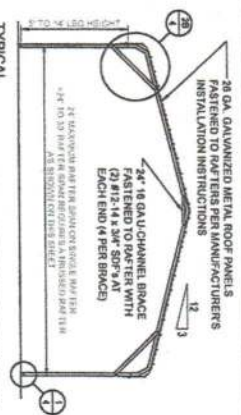
CAROLINA CARPORTS, INC.
GENERIC PLANS FOR USE IN THE STATE OF FLORIDA

BECHTOL ENGINEERING AND TESTING, INC.
605 WEST NEW YORK AVENUE
ORLANDO, FLORIDA 32730

LONG B. PATE
No. 00763
Professional Engineer
STATE OF FLORIDA

BECHTOL ENGINEERING
AND TESTING, INC.
605 WEST NEW YORK AVENUE
ORLANDO, FLORIDA 32730

DATE: 1/1/2004
DRAWN: MB/CS
CHECKED: NIS
PROJECT: TB/CS
SHEET: 2 OF 8



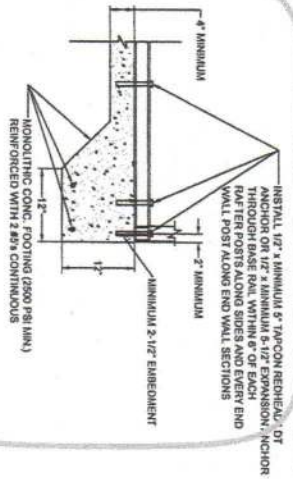
OPTIONAL 24'-1" TO 30' TRUSSED RAFTER - BOW
NOT TO SCALE

OPTIONAL 24'-1" TO 30' TRUSSED RAFTER - BOX EAVE

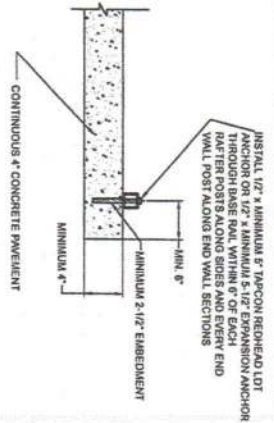
LEAN-TO FRAMING PLAN
NOT TO SCALE

CAROLINA CARPORTS, INC.
GENERIC PLANS FOR USE IN THE STATE OF FLORIDA

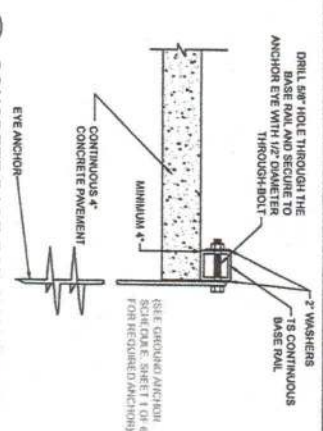
[illegible][illegible]



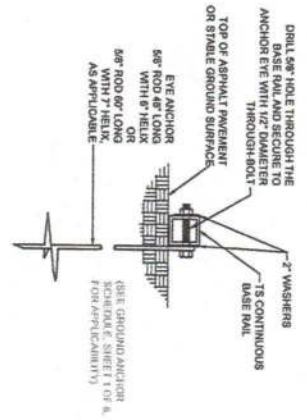
1A
CONCRETE BASE RAIL ANCHORAGE
Not To Scale



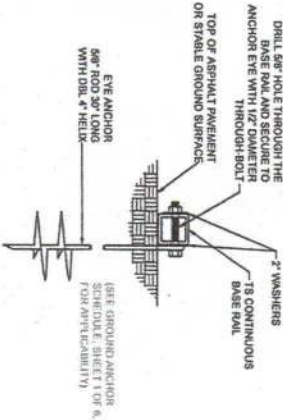
1B
CONCRETE BASE RAIL ANCHORAGE
Not To Scale
(OPTIONAL - OTHER CARPORTS ONLY)



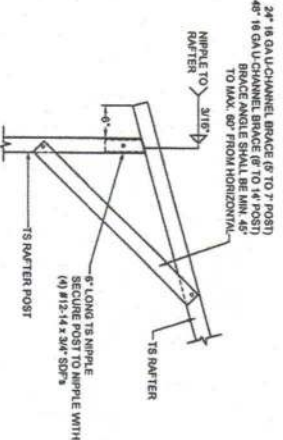
1C
CONCRETE BASE RAIL ANCHORAGE
Not To Scale
(OTHER CARPORTS WHERE SLAB EDGE DISTANCE DOES NOT MEET MINIMUM EDGE DISTANCE SHOWN IN DETAIL 1B)



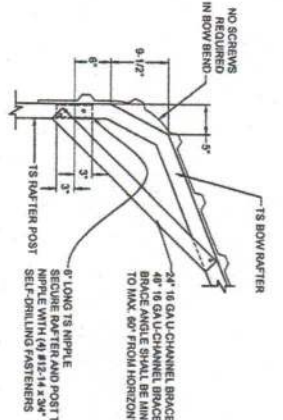
1D
BASE RAIL DEEP ANCHORAGE
Not To Scale



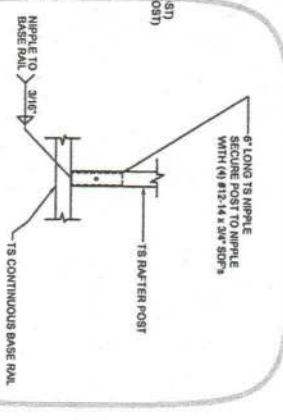
1E
BASE RAIL ANCHORAGE
Not To Scale



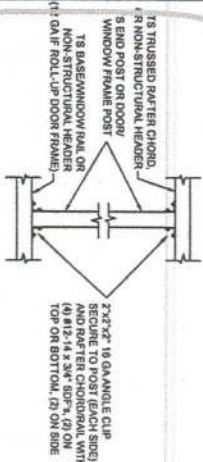
2A
BOX EAVE RAFTER/POST DETAIL
Not To Scale



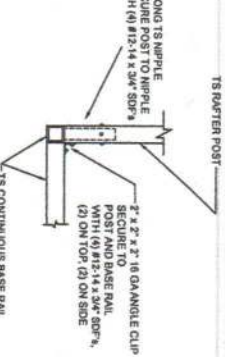
2B
BOW RAFTER/POST DETAIL
Not To Scale



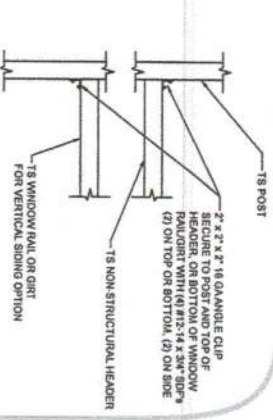
3
POST/BASE RAIL CONN. DETAIL
Not To Scale



4
POST TO RAIL, TRUSS CHORD, OR
NON-STRUCTURAL HEADER CONN. DETAIL
Not To Scale



5
END POST/BASE RAIL CONN.
Not To Scale



6
NON-STRUCTURAL HEADER, WINDOW
RAIL, OR GIRTS TO POST CONN. DETAIL
Not To Scale

BECHTOL ENGINEERING AND TESTING, INC.
605 WEST NEW YORK AVENUE
DELAND, FLORIDA 32720

No. 90763

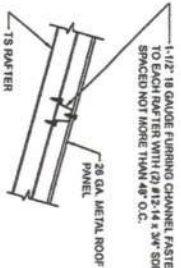
PROFESSIONAL ENGINEER
STATE OF FLORIDA

CAROLINA CARPORTS, INC.
GENERIC PLANS FOR USE IN THE STATE OF FLORIDA

DESIGNED BY: ANS/CS
CHECKED BY: MTS
DATE: 10/1/08
SHEET 4 OF 8

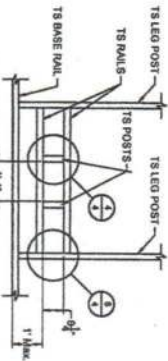
2-1/4" FOR
12 GA FRAMING
2-1/2" FOR
14 GA FRAMING

—1-1/2" 18 GAUGE FURRING CHANNEL FASTENED TO EACH RAFTER WITH (2) #12-14 x 3/4" SDF. SPACED NOT MORE THAN 48" O.C.



16 GAUGE U-CHANNEL BRACE
FASTENED TO THE POST AND
RAFTER WITH (2) #12-14 x 3/4" SDF'S
AT EACH END (4 PER BRACE)

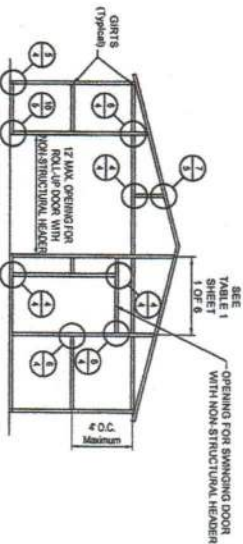
Not To Scale



**TYPICAL FLOOD
VENT FRAMING PLAN**
NOT TO SCALE

NOT TO SCALE

SEE GENERAL NOTE NO. 12, SHEET 1 OF 6

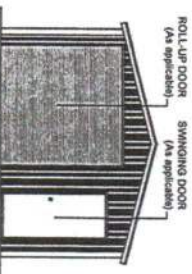


**TYPICAL END
WALL OPENINGS POST/RAFTER/GIRT FRAMING PLAN**
NOT TO SCALE

BOX EAVE FRAME RAFTER ENCLOSED BLDG - VERTICAL SIDES

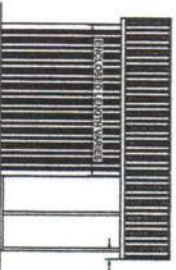


TYPICAL SIDE ELEVATION
NOT TO SCALE

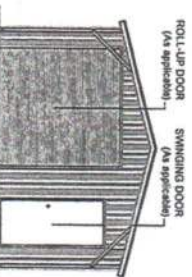


TYPICAL END ELEVATION
NOT TO SCALE

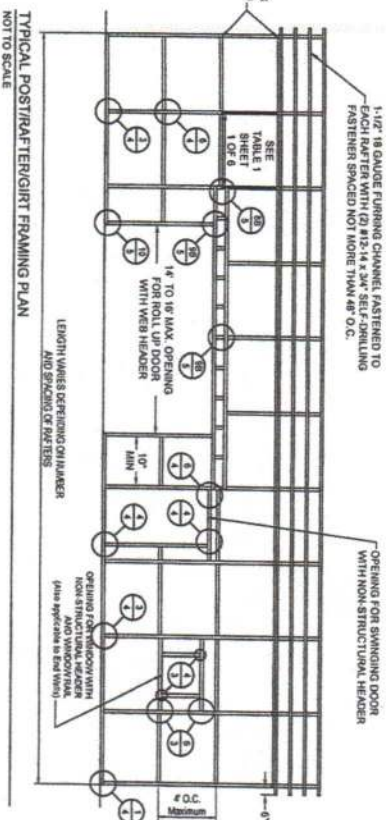
BOX EAVE FRAME RAFTER UTILITY BLDG - VERTICAL SIDES



TYPICAL SIDE ELEVATION
NOT TO SCALE

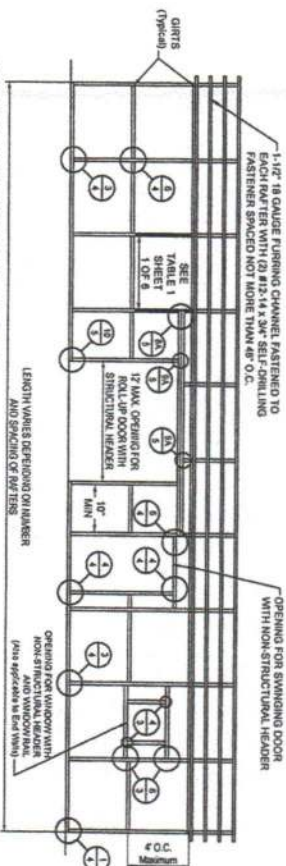


TYPICAL END ELEVATION
NOT TO SCALE



TYPICAL POST/RAFTER/GIRT FRAMING PLAN
NOT TO SCALE

NOT TO SCALE



TYPICAL POST/RAFTER/GIRT FRAMING PLAN
NOT TO SCALE

NOT TO SCALE

CAROLINA CARPORTS, INC.
GENERIC PLANS FOR USE IN THE STATE OF FLORIDA

**BECHTEL ENGINEERING
AND TESTING, Inc.**

| | |
|---------|--------------|
| DATE | DATE |
| DATE | 1/1/2024 |
| NAME/CS | NTS |
| DATE/CS | G24001 |
| DATE/CS | SHEET 6 OF 6 |

BECHTEL ENGINEERING AND TESTING, INC.
605 WEST NEW YORK AVENUE
DELAND, FLORIDA 32720

No. 90763

Professional Engineer Seal for the State of Florida, License No. 90763, issued to LOVE B PATEL, INC.