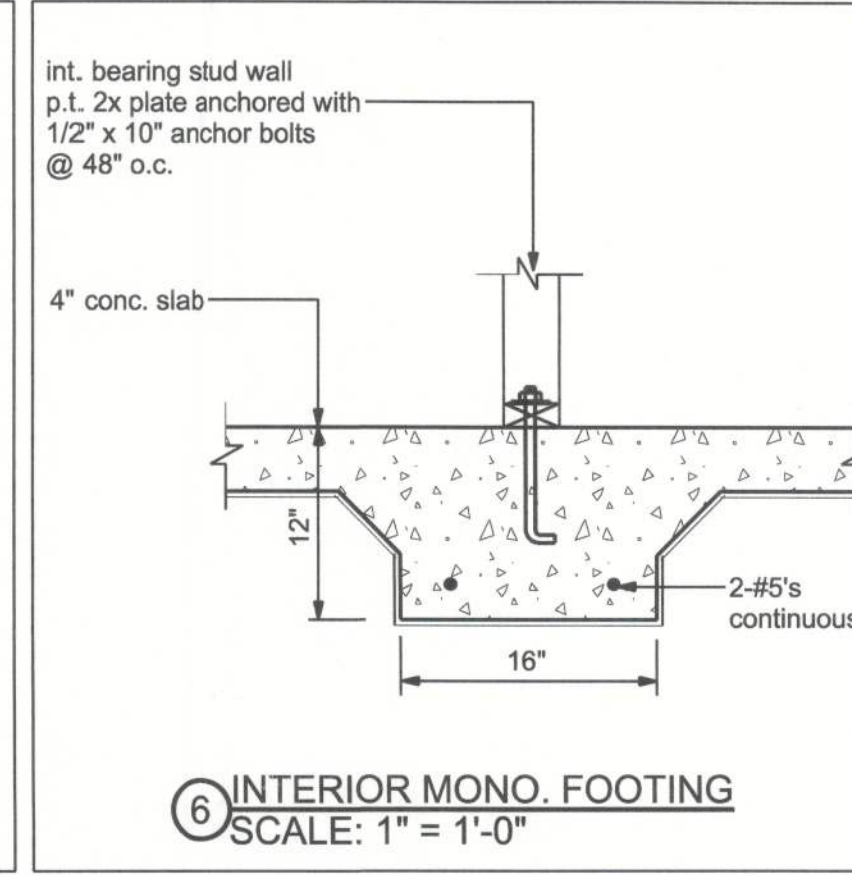
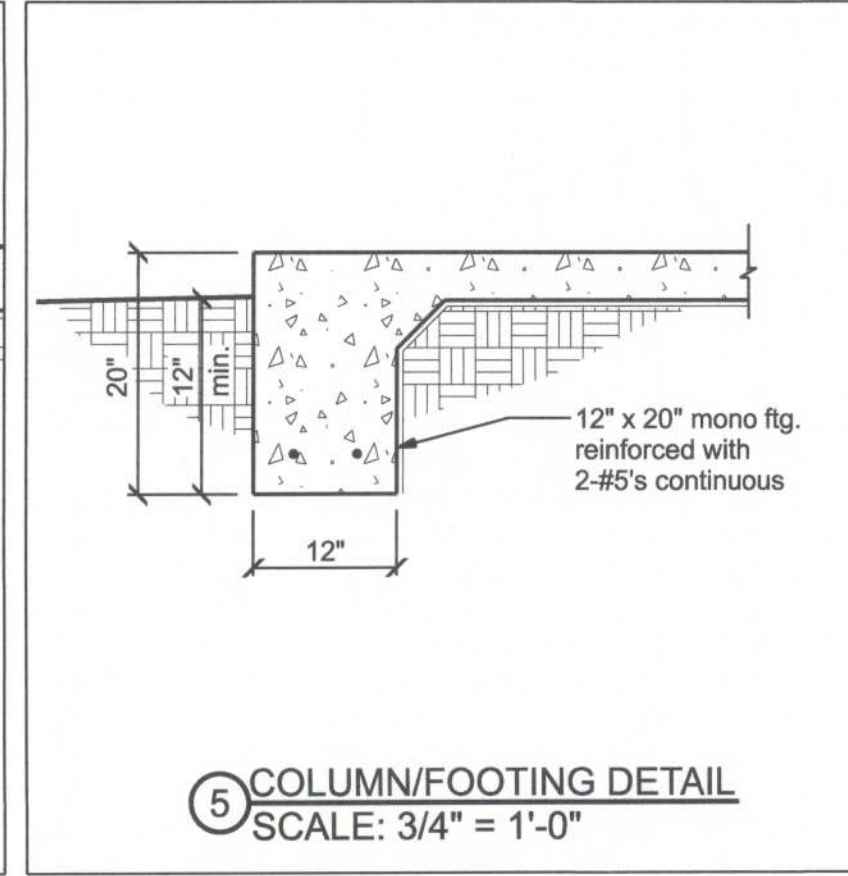
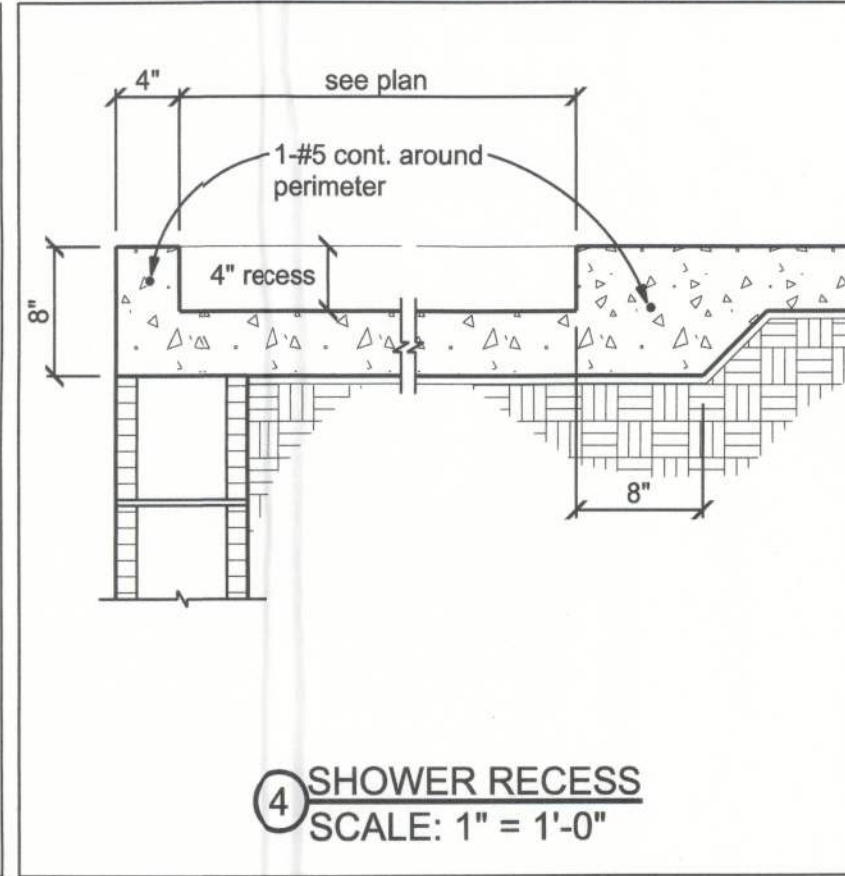
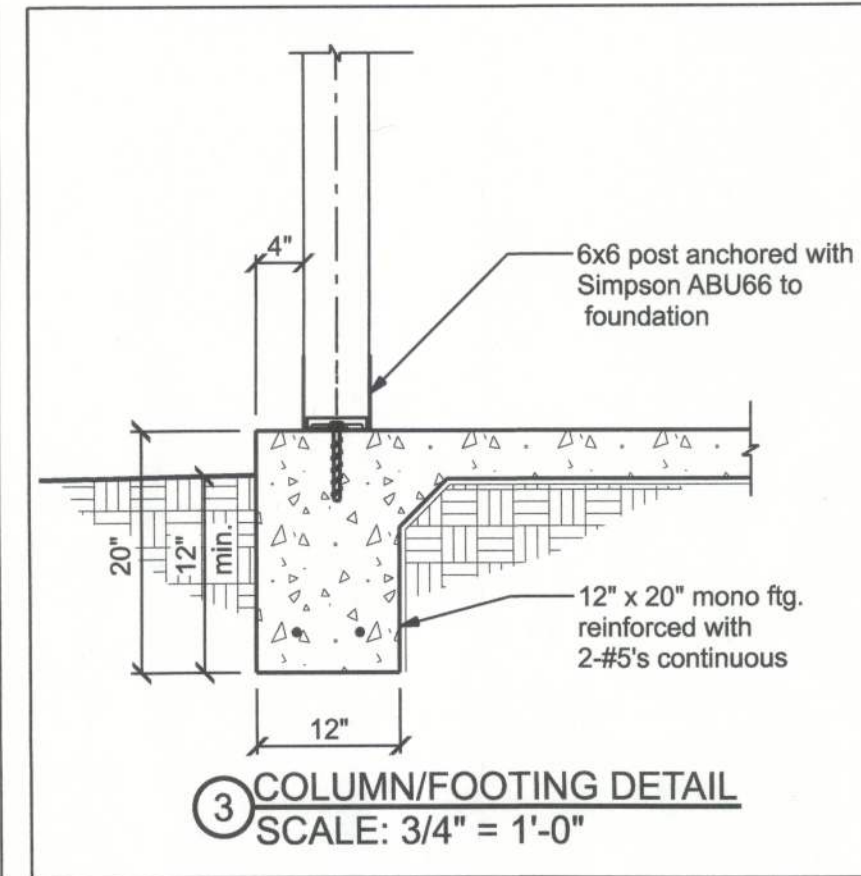
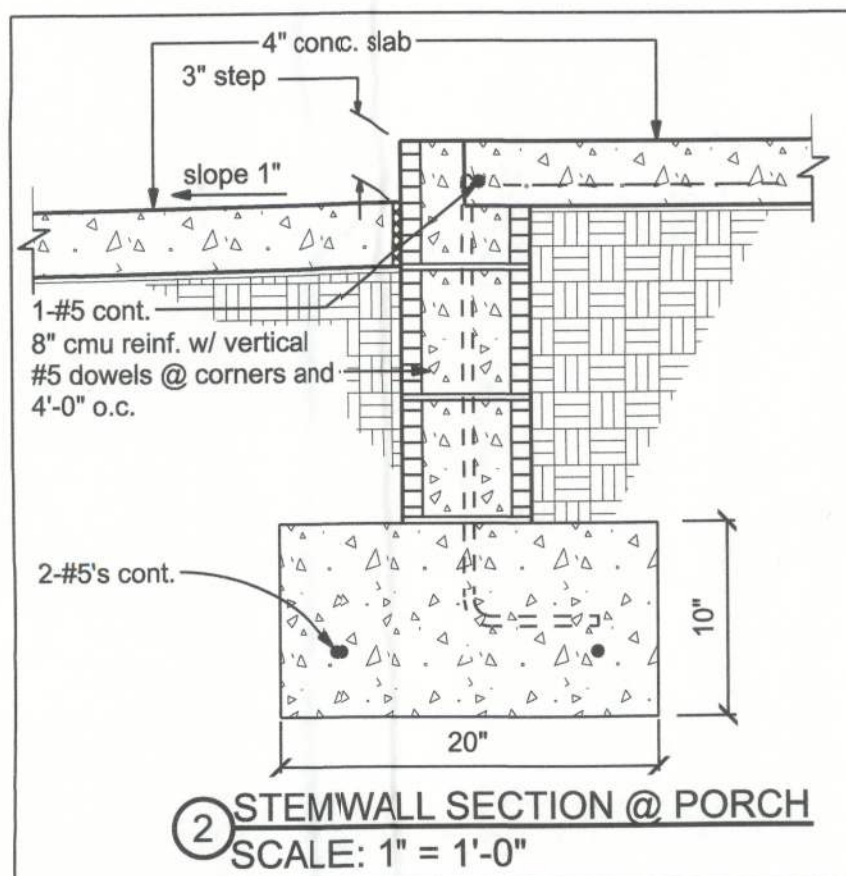
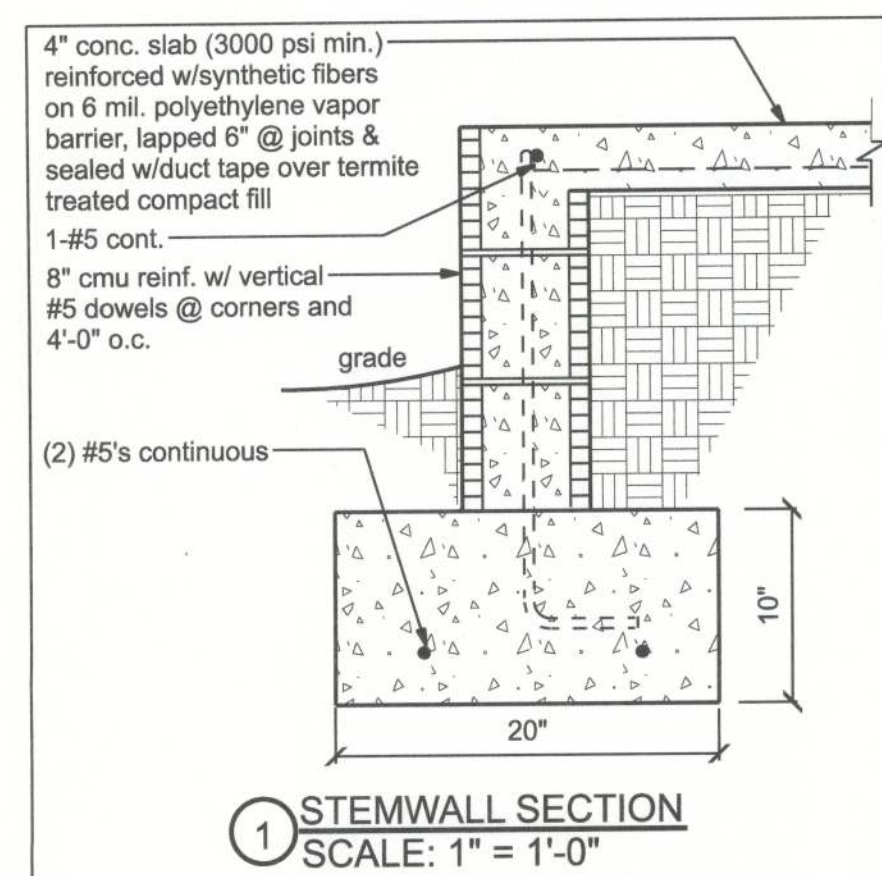


FOUNDATION PLAN
SCALE: 1/4" = 1'-0"



FOUNDATION NOTES:

CONCRETE:
CONCRETE SHALL HAVE A MINIMUM SPECIFIED COMPRESSIVE STRENGTH OF 3000 PSI AT 28 DAYS.

GALVANIZATION:
METAL ACCESSORIES FOR USE IN EXTERIOR WALL CONSTRUCTION AND NOT DIRECTLY EXPOSED TO THE WEATHER SHALL BE GALVANIZED IN ACCORDANCE WITH ASTM A 153, CLASS B-2. METAL PLATE CONNECTORS, SCREWS, BOLTS AND NAILS EXPOSED DIRECTLY TO THE WEATHER SHALL BE STAINLESS STEEL OR HOT DIPPED GALVANIZED.

REINFORCING STEEL:
THE REINFORCING STEEL SHALL BE MINIMUM GRADE 60

REINFORCEMENT MAY BE BENT IN THE SHOP OR THE FIELD PROVIDED:

1. ALL REINFORCEMENT IS BENT COLD.
2. THE DIAMETER OF THE BEND, MEASURED ON THE INSIDE OF THE BAR, IS NOT LESS THAN SIX-BAR DIAMETERS AND
3. REINFORCEMENT PARTIALLY EMBEDDED IN CONCRETE SHALL NOT BE FIELD BENT.

EXCEPTION: WHERE BENDING IS NECESSARY TO ALIGN DOWEL BARS WITH A VERTICAL CELL, BARS PARTIALLY EMBEDDED IN CONCRETE SHALL BE PERMITTED TO BE BENT AT A SLOPE OF NOT MORE THAN 1 INCH OF HORIZONTAL DISPLACEMENT TO 6 INCHES OF VERTICAL BAR LENGTH.

COVER OVER REINFORCING STEEL

FOR FOUNDATIONS, MINIMUM CONCRETE COVER OVER REINFORCING BARS SHALL BE:
3 INCHES IN FOUNDATIONS WHERE THE CONCRETE IS CAST AGAINST AND PERMANENTLY IN CONTACT WITH THE EARTH OR EXPOSED TO THE EARTH OR WEATHER AND 1 1/2 INCHES ELSEWHERE. REINFORCING BARS EMBEDDED IN GROUTED CELLS SHALL HAVE A MINIMUM CLEAR DISTANCE OF 1/4 INCH FOR FINE GROUT OR 1/2 INCH FOR COARSE GROUT BETWEEN REINFORCING BARS AND ANY FACE OF A CELL. REINFORCING BARS USED IN MASONRY WALLS SHALL HAVE A MASONRY COVER (INCLUDING GROUT) OF NOT LESS THAN 2 INCHES FOR MASONRY UNITS WITH FACE EXPOSED TO EARTH OR WEATHER 1 1/2 INCHES FOR MASONRY UNITS NOT EXPOSED TO EARTH OR WEATHER

NOTE:

CONCRETE SLABS, WALKS, DRIVES AND PATIOS CAN DEVELOP HAIRLINE CRACKS THAT WILL NOT AFFECT THE STRUCTURAL INTEGRITY OF THE BUILDING. THERE IS NO KNOWN METHOD OF ELIMINATING THIS CONDITION, WHICH IS CAUSED BY THE CHARACTERISTICS OF EXPANSION AND CONTRACTION THAT OCCURS IN ALL CONCRETE APPLICATIONS. IT DOES NOT AFFECT THE STRENGTH OF THE BUILDING, AND IT IS NOT A CONDITION COVERED BY ANY WARRANTY.



BEADLE RESIDENCE FOUNDATION PLAN

P.O. BOX 3271
ST. AUGUSTINE, FL. 32085
(386) 965-0644
C.O.A. # 33259



DATE
4/07/24

DRAWN BY
W.H.F.

APPROVED
W.H.F.

REVISIONS

SHEET
A-5

OF
9

PROJECT NO.
24.R009