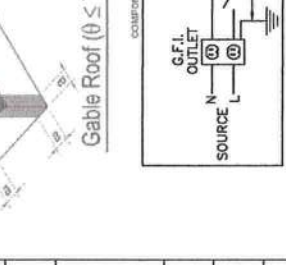
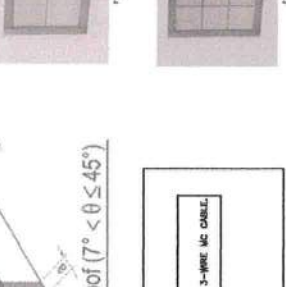
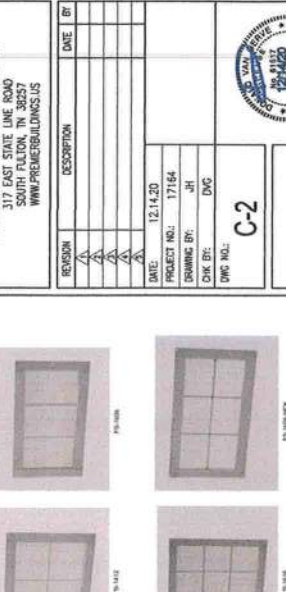
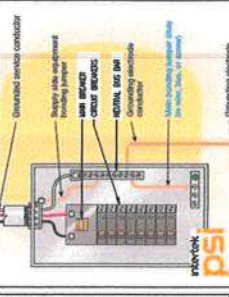


FASTENING SCHEDULE (2304.10.1. FBC)

CONNECTION	FASTENING	LOCATION
1. JOIST TO SILL OR GIRD	3 - 84 COMMON (25x0.1317) 3 - 3" x 14 GAGE STAPLES	TEE-NAIL
2. BRIDGING TO JOIST	2 - 84 COMMON (25x0.1317) 2 - 3" x 14 GAGE STAPLES	TEE-NAIL EACH END
3. SOLE PLATE TO JOIST OR BLOORING	164 (25x0.1317) @ 16" o/c 3"x0.131" NAILS @ 8" o/c 3 - 14 GAGE STAPLES @ 12" o/c	TYPICAL FACE NAIL
4. SOLE PLATE TO JOIST OR BLOORING @ BRACED WALL PANEL	3 - 164 (25x0.1317) @ 16" o/c 4 - 3"x0.131" NAILS @ 16" o/c 4 - 3" x 14 GAGE STAPLES @ 16" o/c	BRACED WALL PANELS
5. TOP PLATE TO STUD	2 - 164 (25x0.1317) 3 - 3"x0.131" NAILS 3 - 3" x 14 GAGE STAPLES	END NAIL
6. STUD TO SOLE PLATE	4 - 84 COMMON (25x0.1317) 4 - 3"x0.131" NAILS 3 - 3" x 14 GAGE STAPLES	TEE-NAIL
7. DOUBLE STUDS	2 - 164 (25x0.1317) @ 24" o/c 3"x0.131" NAILS @ 8" o/c 3" x 14 GAGE STAPLES @ 8" o/c	END NAIL
8. DOUBLE TOP PLATE	164 (25x0.1317) @ 24" o/c 3"x0.131" NAILS @ 16" o/c 3" x 14 GAGE STAPLES @ 12" o/c	FACE NAIL
9. BLOORING BETWEEN JOISTS OR TRUSSES TO TOP PLATE	84 (25x0.1317) @ 8" o/c 3"x0.131" NAILS @ 8" o/c 3 - 3" x 14 GAGE STAPLES	TYPICAL FACE NAIL
10. RM JOIST TO TOP PLATE	2 - 164 (25x0.1317) @ 8" o/c 3 - 3"x0.131" NAILS @ 8" o/c 3 - 3" x 14 GAGE STAPLES	UP SPICE
11. TOP PLATES, LAPPS AND INTERSECTIONS	2 - 164 (25x0.1317) @ 8" o/c 3 - 3"x0.131" NAILS @ 8" o/c 3 - 3" x 14 GAGE STAPLES	TEE-NAIL
12. CONTINUOUS HEADER (2) PIECES	164 (25x0.1317) @ 24" o/c 3 - 3"x0.131" NAILS 3 - 3" x 14 GAGE STAPLES	FACE NAIL
13. CEILING JOISTS TO PLATE	3 - 84 COMMON (25x0.1317) 3 - 3"x0.131" NAILS 5 - 3" x 14 GAGE STAPLES	18" o/c ALONG EDGE
14. CONTINUOUS HEADER TO STUD	4 - 84 COMMON (25x0.1317) 3 - 3"x0.131" NAILS 3 - 3" x 14 GAGE STAPLES	TEE-NAIL
15. RAFTER TO PLATE	2 - 84 COMMON (25x0.1317) 2 - 3"x0.131" NAILS 3 - 3" x 14 GAGE STAPLES	TEE-NAIL
16. 1" DIAGONAL BRACE TO EX. STUD & PLATE	164 (25x0.1317) @ 24" o/c 3"x0.131" NAILS @ 16" o/c 3" x 14 GAGE STAPLES @ 16" o/c	FACE NAIL
17. BUILT-UP CORNER STUDS	204 (25x0.1317) @ 24" o/c 3"x0.131" NAILS @ 24" o/c 3" x 14 GAGE STAPLES @ 16" o/c	FACE NAIL @ TOP & BOTTOM STAGGERED ON OPP. SIDES
18. BUILT-UP GIRDERS AND BEAMS	2 - 204 COMMON (45x0.1927) 3 - 3"x0.131" NAILS 3 - 3" x 14 GAGE STAPLES	FACE NAIL @ ENDS AND AT EACH SPICE
19. COLLAR TIE TO RAFTER	3 - 104 COMMON (37x0.1487) 4 - 3"x0.131" NAILS 4 - 3" x 14 GAGE STAPLES	FACE NAIL
20. ROOF RAFTER TO 2-BY ROOF BEAM	2 - 164 COMMON (25x0.1317) 3 - 3"x0.131" NAILS 3 - 3" x 14 GAGE STAPLES	TEE-NAIL OR FACE NAIL
21. JOIST TO BAND JOIST	3 - 164 COMMON (25x0.1317) 4 - 3"x0.131" NAILS 4 - 3" x 14 GAGE STAPLES	FACE NAIL



AREA FOR APPROVAL STAMPS



PSI
Professional Structural Engineers & Architects
1000 Peachtree Street, N.E.
Atlanta, Georgia 30309
Phone: 404.525.1100
Fax: 404.525.1101
www.psi-engineers.com

MONTEZUMA SHOP
241 HAMILTON ROAD
MONTEZUMA, GA 31063

LOFTED BARN

FASTENING SCHEDULE / WIND LOADING

DON VAN GERVE, P.E.
SPECIALTY STRUCTURAL ENGINEER

ALTERNATE DESIGN SOLUTIONS
1000 Peachtree Street, N.E.
Atlanta, Georgia 30309
www.alternatedesign.com

ENGINEERING SERVICES PROVIDED FOR:
PREMIER PORTABLE BUILDINGS
317 EAST STATE LINE ROAD
SOUTH FULCON TN 30257
WWW.PREMIERBUILDINGS.US

REVISION: _____ DATE: _____
DESCRIPTION: _____

DATE: 12.14.20
PROJECT NO.: 171624
DRAWING BY: JH
CHK BY: DJG
DWG NO.: C-2

APPROVAL: FL17588-R1

AREA FOR APPROVAL STAMPS

PSI
Professional Structural Engineers & Architects
1000 Peachtree Street, N.E.
Atlanta, Georgia 30309
Phone: 404.525.1100
Fax: 404.525.1101
www.psi-engineers.com

MONTEZUMA SHOP
241 HAMILTON ROAD
MONTEZUMA, GA 31063

LOFTED BARN

FASTENING SCHEDULE / WIND LOADING

DON VAN GERVE, P.E.
SPECIALTY STRUCTURAL ENGINEER

ALTERNATE DESIGN SOLUTIONS
1000 Peachtree Street, N.E.
Atlanta, Georgia 30309
www.alternatedesign.com

ENGINEERING SERVICES PROVIDED FOR:
PREMIER PORTABLE BUILDINGS
317 EAST STATE LINE ROAD
SOUTH FULCON TN 30257
WWW.PREMIERBUILDINGS.US

REVISION: _____ DATE: _____
DESCRIPTION: _____

DATE: 12.14.20
PROJECT NO.: 171624
DRAWING BY: JH
CHK BY: DJG
DWG NO.: C-2

APPROVAL: FL17588-R1

AREA FOR APPROVAL STAMPS

PSI
Professional Structural Engineers & Architects
1000 Peachtree Street, N.E.
Atlanta, Georgia 30309
Phone: 404.525.1100
Fax: 404.525.1101
www.psi-engineers.com

MONTEZUMA SHOP
241 HAMILTON ROAD
MONTEZUMA, GA 31063

LOFTED BARN

FASTENING SCHEDULE / WIND LOADING

DON VAN GERVE, P.E.
SPECIALTY STRUCTURAL ENGINEER

ALTERNATE DESIGN SOLUTIONS
1000 Peachtree Street, N.E.
Atlanta, Georgia 30309
www.alternatedesign.com

ENGINEERING SERVICES PROVIDED FOR:
PREMIER PORTABLE BUILDINGS
317 EAST STATE LINE ROAD
SOUTH FULCON TN 30257
WWW.PREMIERBUILDINGS.US

REVISION: _____ DATE: _____
DESCRIPTION: _____

DATE: 12.14.20
PROJECT NO.: 171624
DRAWING BY: JH
CHK BY: DJG
DWG NO.: C-2

APPROVAL: FL17588-R1

AREA FOR APPROVAL STAMPS

PSI
Professional Structural Engineers & Architects
1000 Peachtree Street, N.E.
Atlanta, Georgia 30309
Phone: 404.525.1100
Fax: 404.525.1101
www.psi-engineers.com

MONTEZUMA SHOP
241 HAMILTON ROAD
MONTEZUMA, GA 31063

LOFTED BARN

FASTENING SCHEDULE / WIND LOADING

DON VAN GERVE, P.E.
SPECIALTY STRUCTURAL ENGINEER

ALTERNATE DESIGN SOLUTIONS
1000 Peachtree Street, N.E.
Atlanta, Georgia 30309
www.alternatedesign.com

ENGINEERING SERVICES PROVIDED FOR:
PREMIER PORTABLE BUILDINGS
317 EAST STATE LINE ROAD
SOUTH FULCON TN 30257
WWW.PREMIERBUILDINGS.US

REVISION: _____ DATE: _____
DESCRIPTION: _____

DATE: 12.14.20
PROJECT NO.: 171624
DRAWING BY: JH
CHK BY: DJG
DWG NO.: C-2

APPROVAL: FL17588-R1

AREA FOR APPROVAL STAMPS

PSI
Professional Structural Engineers & Architects
1000 Peachtree Street, N.E.
Atlanta, Georgia 30309
Phone: 404.525.1100
Fax: 404.525.1101
www.psi-engineers.com

MONTEZUMA SHOP
241 HAMILTON ROAD
MONTEZUMA, GA 31063

LOFTED BARN

FASTENING SCHEDULE / WIND LOADING

DON VAN GERVE, P.E.
SPECIALTY STRUCTURAL ENGINEER

ALTERNATE DESIGN SOLUTIONS
1000 Peachtree Street, N.E.
Atlanta, Georgia 30309
www.alternatedesign.com

ENGINEERING SERVICES PROVIDED FOR:
PREMIER PORTABLE BUILDINGS
317 EAST STATE LINE ROAD
SOUTH FULCON TN 30257
WWW.PREMIERBUILDINGS.US

REVISION: _____ DATE: _____
DESCRIPTION: _____

DATE: 12.14.20
PROJECT NO.: 171624
DRAWING BY: JH
CHK BY: DJG
DWG NO.: C-2

APPROVAL: FL17588-R1

AREA FOR APPROVAL STAMPS

PSI
Professional Structural Engineers & Architects
1000 Peachtree Street, N.E.
Atlanta, Georgia 30309
Phone: 404.525.1100
Fax: 404.525.1101
www.psi-engineers.com

MONTEZUMA SHOP
241 HAMILTON ROAD
MONTEZUMA, GA 31063

LOFTED BARN

FASTENING SCHEDULE / WIND LOADING

DON VAN GERVE, P.E.
SPECIALTY STRUCTURAL ENGINEER

ALTERNATE DESIGN SOLUTIONS
1000 Peachtree Street, N.E.
Atlanta, Georgia 30309
www.alternatedesign.com

ENGINEERING SERVICES PROVIDED FOR:
PREMIER PORTABLE BUILDINGS
317 EAST STATE LINE ROAD
SOUTH FULCON TN 30257
WWW.PREMIERBUILDINGS.US

REVISION: _____ DATE: _____
DESCRIPTION: _____

DATE: 12.14.20
PROJECT NO.: 171624
DRAWING BY: JH
CHK BY: DJG
DWG NO.: C-2

APPROVAL: FL17588-R1

AREA FOR APPROVAL STAMPS

PSI
Professional Structural Engineers & Architects
1000 Peachtree Street, N.E.
Atlanta, Georgia 30309
Phone: 404.525.1100
Fax: 404.525.1101
www.psi-engineers.com

MONTEZUMA SHOP
241 HAMILTON ROAD
MONTEZUMA, GA 31063

LOFTED BARN

FASTENING SCHEDULE / WIND LOADING

DON VAN GERVE, P.E.
SPECIALTY STRUCTURAL ENGINEER

ALTERNATE DESIGN SOLUTIONS
1000 Peachtree Street, N.E.
Atlanta, Georgia 30309
www.alternatedesign.com

ENGINEERING SERVICES PROVIDED FOR:
PREMIER PORTABLE BUILDINGS
317 EAST STATE LINE ROAD
SOUTH FULCON TN 30257
WWW.PREMIERBUILDINGS.US

REVISION: _____ DATE: _____
DESCRIPTION: _____

DATE: 12.14.20
PROJECT NO.: 171624
DRAWING BY: JH
CHK BY: DJG
DWG NO.: C-2

APPROVAL: FL17588-R1

