

COA #0 278  
Florida Certificate of Product Approval #FL1999  
10/14/2024

Alpine, an ITW Company  
155 Harlem Ave  
North Building, 4th Floor  
Glenview, IL 60025  
Phone: (800)755-6001  
www.alpineitw.com



This item has been digitally signed by Douglas Fleming on the date adjacent to the seal.

Printed copies of this document are not considered signed and sealed and the signature must be verified on any electronic copies.

Site Information:	Page 1:
Customer: W. B. Howland Company, Inc.	Job Number: 24-1859
Job Description: Parsons	
Address:	

Job Engineering Criteria:	
Design Code: FBC 8th Ed. 2023 Res.	IntelliVIEW Version: 23.02.04 JRef #: 1Y432150001
Wind Standard: ASCE 7-22      Wind Speed (mph): 130	Design Loading (psf): 40.00
Building Type: Closed	

This package contains general notes pages, 26 truss drawing(s) and 4 detail(s).

Item	Drawing Number	Truss
1	288.24.0816.11043	A1
3	288.24.0816.36697	A2
5	288.24.0816.42280	B1
7	288.24.0816.59477	B2
9	288.24.0817.06543	C1E
11	288.24.0817.12337	D1E
13	288.24.0817.16140	D3
15	288.24.0817.20420	M1E
17	288.24.0818.06963	P1
19	288.24.0818.26060	V1
21	288.24.0818.30900	V3
23	288.24.0818.38733	V5
25	288.24.0818.41440	V7
27	BRCLBSUB0119	
29	VAL180220723	

Item	Drawing Number	Truss
2	288.24.0816.30867	A1E
4	288.24.0816.40167	A2E
6	288.24.0816.47897	B1E
8	288.24.0817.01957	C1
10	288.24.0817.09523	D1
12	288.24.0817.14053	D2
14	288.24.0817.18263	M1
16	288.24.0818.03320	M2
18	288.24.0818.09510	P1E
20	288.24.0818.28813	V2
22	288.24.0818.37330	V4
24	288.24.0818.40127	V6
26	288.24.0818.44423	V8
28	PB160220723	
30	VALTN220723	

## **General Notes**

### **Truss Design Engineer Scope of Work, Design Assumptions and Design Responsibilities:**

The design responsibilities assumed in the preparation of these design drawings are those specified in ANSI/TPI 1, Chapter 2; and the National Design Standard for Metal Plate Connected Wood Truss Construction, by the Truss Plate Institute. The truss component designs conform to the applicable provisions of ANSI/TPI 1 and NDS, the National Design Specification for Wood Construction by AWC. The truss component designs are based on the specified loading and dimension information furnished by others to the Truss Design Engineer. The Truss Design Engineer has no duty to independently verify the accuracy or completeness of the information provided by others and may rely on that information without liability. The responsibility for verification of that information remains with others neither employed nor controlled by the Truss Design Engineer. The Truss Design Engineer's seal and signature on the attached drawings, or cover page listing these drawings, indicates acceptance of professional engineering responsibility solely for the truss component designs and not for the technical information furnished by others which technical information and consequences thereof remain their sole responsibility.

The suitability and use of these drawings for any particular structure is the responsibility of the Building Designer in accordance with ANSI/TPI 1 Chapter 2. The Building Designer is responsible for determining that the dimensions and loads for each truss component match those required by the plans and by the actual use of the individual component, and for ascertaining that the loads shown on the drawings meet or exceed applicable building code requirements and any additional factors required in the particular application. Truss components using metal connector plates with integral teeth shall not be placed in environments that will cause the moisture content of the wood in which plates are embedded to exceed 19% and/or cause corrosion of connector plates and other metal fasteners.

The Truss Design Engineer shall not be responsible for items beyond the specific scope of the agreed contracted work set forth herein, including but not limited to: verifying the dimensions of the truss component, calculation of any of the truss component design loads, inspection of the truss components before or after installation, the design of temporary or permanent bracing and their attachment required in the roof and/or floor systems, the design of diaphragms or shear walls, the design of load transfer connections to and from diaphragms and shear walls, the design of load transfer to the foundation, the design of connections for truss components to their bearing supports, the design of the bearing supports, installation of the truss components, observation of the truss component installation process, review of truss assembly procedures, sequencing of the truss component installation, construction means and methods, site and/or worker safety in the installation of the truss components and/or its connections.

This document may be a high-quality facsimile of the original engineering document which is a digitally signed electronic file with third party authentication. A wet or embossed seal copy of this engineering document is available upon request.

### **Temporary Lateral Restraint and Bracing:**

Temporary lateral restraint and diagonal bracing shall be installed according to the provisions of BCSI chapters B1, B2, B7 and/or B10 (Building Component Safety Information, by TPI and SBCA), or as specified by the Building Designer or other Registered Design Professional. The required locations for lateral restraint and/or bracing depicted on these drawings are only for the permanent lateral support of the truss members to reduce buckling lengths, and do not apply to and may not be relied upon for the temporary stability of the truss components during their installation.

### **Permanent Lateral Restraint and Bracing:**

The required locations for lateral restraint or bracing depicted on these drawings are for the permanent lateral support of the truss members to reduce buckling lengths. Permanent lateral support shall be installed according to the provisions of BCSI chapters B3, B7 and/or B10, or as specified by the Building Designer or other Registered Design Professional. These drawings do not depict or specify installation/erection bracing, wind bracing, portal bracing or similar building stability bracing which are parts of the overall building design to be specified, designed, and detailed by the Building Designer.

### **Connector Plate Information:**

Alpine connector plates are made of ASTM A653 or ASTM A1063 galvanized steel with the following designations, gauges and grades: W=Wave, 20ga, grade 40; H=High Strength, 20ga, grade 60; S=Super Strength, 18ga, grade 60. Information on model code compliance is contained in the ICC Evaluation Service report ESR-1118, available on-line at [www.icc-es.org](http://www.icc-es.org).

### **Bearing Information:**

The bearing area factor,  $C_b$ , is considered for the allowable capacity of solid sawn wood bearings supporting trusses that are located a minimum of 3" from the end of the lumber piece.

## **General Notes** (continued)

### **Coated Lumber:**

Coated lumber must be properly re-dried and maintained below 19% or less moisture level through all stages of construction and usage. Coated lumber has no adjustments to lumber properties. Coated lumber may be more brittle than uncoated lumber. Special handling care must be taken to prevent breakage during all handling activities. Refer to manufacturer literature, specifications, and code evaluation reports for restrictions, details, and requirements.

### **Fire Retardant Treated Lumber:**

Fire retardant treated lumber must be properly re-dried and maintained below 19% or less moisture level through all stages of construction and usage. Fire retardant treated lumber may be more brittle than untreated lumber. Special handling care must be taken to prevent breakage during all handling activities.

### **Key to Terms:**

Information provided on drawings reflects a summary of the pertinent information required for the truss design. Detailed information on load cases, reactions, member lengths, forces and members requiring permanent lateral support may be found in calculation sheets available upon written request.

BCDL = Bottom Chord standard design Dead Load in pounds per square foot.

BCLL = Bottom Chord standard design Live Load in pounds per square foot.

C = Coated lumber.

C-AT = AtTEK coated lumber.

C-FX = FX Lumber Guard coated lumber.

C-TE = TechWood 4400 coated lumber.

CL = Certified lumber.

Des Ld = total of TCLL, TCDL, BCLL and BCDL Design Load in pounds per square foot.

FRT = Fire Retardant Treated lumber.

FRT-BF = Boraflame Fire Retardant Treated lumber

FRT-DB = D-Blaze Fire Retardant Treated lumber.

FRT-DC = Dricon Fire Retardant Treated lumber.

FRT-FP = FirePRO Fire Retardant Treated lumber.

FRT-FL = FlamePRO Fire Retardant Treated lumber.

FRT-FT = FlameTech Fire Retardant Treated lumber.

FRT-ON = OnWood Fire Retardant Treated lumber.

FRT-PG = PYRO-GUARD Fire Retardant Treated lumber.

FRT-PR = ProWood Fire Retardant Treated lumber.

g = green lumber.

HORZ(LL) = maximum Horizontal panel point deflection due to Live Load, in inches.

HORZ(TL) = maximum Horizontal panel point long term deflection in inches, due to Total Load, including creep adjustment.

HPL = additional Horizontal Load added to a truss Piece in pounds per linear foot or pounds.

Ic = Incised lumber.

FJ = Finger Jointed lumber.

L/# = user specified divisor for limiting span/deflection ratio for evaluation of actual L/defl value.

L/defl = ratio of Length between bearings, in inches, divided by the vertical Deflection due to creep, in inches, at the referenced panel point. Reported as 999 if greater than or equal to 999.

Loc = Location, starting location of left end of bearing or panel point (joint) location of deflection.

Max BC CSI = Maximum bending and axial Combined Stress Index for Bottom Chords for all load cases.

Max TC CSI = Maximum bending and axial Combined Stress Index for Top Chords for all load cases.

Max Web CSI = Maximum bending and axial Combined Stress Index for Webs for all load cases.

NCBCLL = Non-Concurrent Bottom Chord design Live Load in pounds per square foot.

PL = additional Load applied at a user specified angle on a truss Piece in pounds per linear foot or pounds.

PLB = additional vertical load added to a Bottom chord Piece of a truss in pounds per linear foot or pounds

PLT = additional vertical load added to a Top chord Piece of a truss in pounds per linear foot or pounds.

PP = Panel Point.

R = maximum downward design Reaction, in pounds, from all specified gravity load cases, at the indicated location (Loc).

-R = maximum upward design Reaction, in pounds, from all specified gravity load cases, at the identified location (Loc).

Rh = maximum horizontal design Reaction in either direction, in pounds, from all specified gravity load cases, at the indicated location (Loc).

RL = maximum horizontal design Reaction in either direction, in pounds, from all specified non-gravity (wind or seismic) load cases, at the indicated location (Loc).

## **General Notes** (continued)

### **Key to Terms** (continued):

Rw = maximum downward design Reaction, in pounds, from all specified non-gravity (wind or seismic) load cases, at the identified location (Loc).

TCDL = Top Chord standard design Dead Load in pounds per square foot.

TCLL = Top Chord standard design Live Load in pounds per square foot.

U = maximum Upward design reaction, in pounds, from all specified non-gravity (wind or seismic) load cases, at the indicated location (Loc).

VERT(CL) = maximum Vertical panel point deflection in inches due to Live Load and Creep Component of Dead Load in inches.

VERT(CTL) = maximum Vertical panel point deflection ratios due to Live Load and Creep Component of Dead Load, and maximum long term Vertical panel point deflection in inches due to Total load, including creep adjustment.

VERT(LL) = maximum Vertical panel point deflection in inches due to Live Load.

VERT(TL) = maximum Vertical panel point long term deflection in inches due to Total load, including creep adjustment.

W = Width of non-hanger bearing, in inches.

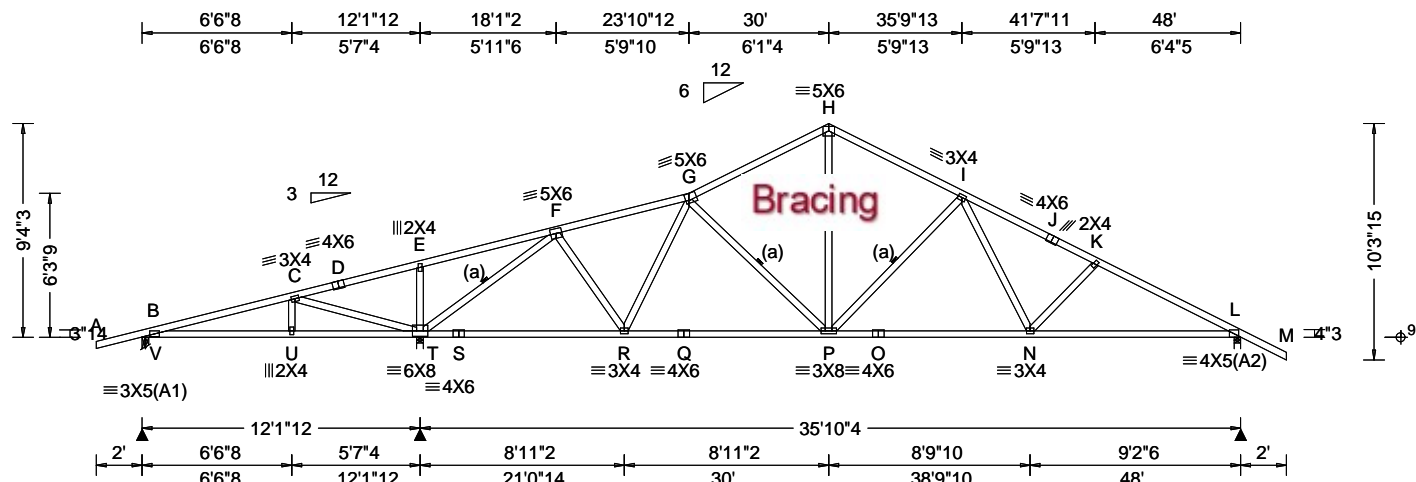
Refer to ASCE-7 for Wind and Seismic abbreviations.

Uppercase Acronyms not explained above are as defined in TPI 1.

### **References:**

1. AWC: American Wood Council; 222 Catoctin Circle SE, Suite 201; Leesburg, VA 20175; [www.awc.org](http://www.awc.org).
2. ICC: International Code Council; [www.iccsafe.org](http://www.iccsafe.org).
3. Alpine, a division of ITW Building Components Group Inc.: 155 Harlem Ave, North Building, 4th Floor, Glenview, IL 60025; [www.alpineitw.com](http://www.alpineitw.com).
4. TPI: Truss Plate Institute, 2670 Crain Highway, Suite 203, Waldorf, MD 20601; [www.tpinst.org](http://www.tpinst.org).
5. SBCA: Wood Truss Council of America, 6300 Enterprise Lane, Madison, WI 53719; [www.sbcacomponents.com](http://www.sbcacomponents.com)

SEQN: 645480 FROM: RFG	COMN Ply: 1 Qty: 6	Job Number: 24-1859 Parsons Truss Label: A1	Cust: R 215 JRRef: 1Y432150001 T2 DrwNo: 288.24.0816.11043 KD / DF 10/14/2024
---------------------------	--------------------------	---	---



Loading Criteria (psf)	Wind Criteria	Snow Criteria (Pg, Pf in PSF)	Defl/CSI Criteria	▲ Maximum Reactions (lbs)
TCLL: 20.00 TCDL: 10.00 BCLL: 0.00 BCDL: 10.00 Des Ld: 40.00 NCBCLL: 10.00 Soffit: 2.00 Load Duration: 1.25 Spacing: 24.0 "	Wind Std: ASCE 7-22 Speed: 130 mph Enclosure: Closed Risk Category: II EXP: C Kzt: NA Mean Height: 15.00 ft TCDL: 5.0 psf BCDL: 5.0 psf MWFRS Parallel Dist: 0 to h/2 C&C Dist a: 4.80 ft Loc. from endwall: not in 6.50 ft GCp: 0.18 Wind Duration: 1.60	Pg: NA Ct: NA CAT: NA Pf: NA Ce: NA Lu: NA Cs: NA Snow Duration: NA Building Code: FBC 8th Ed. 2023 Res. TPI Std: 2014 Rep Fac: Yes FT/RT: 20(0)/10(0) Plate Type(s): WAVE	PP Deflection in loc L/defl L/# VERT(LL): 0.141 I 999 360 VERT(CL): 0.273 I 999 240 HORZ(LL): 0.052 L - - HORZ(TL): 0.098 L - - Creep Factor: 2.0 Max TC CSI: 0.608 Max BC CSI: 0.986 Max Web CSI: 0.910 VIEW Ver: 23.02.04.0123.14	Gravity Loc R+ / R- / Rh / Rw / U / RL Non-Gravity V 412 -/- /194 /100 /268 T 2464 -/- /1258 /420 -/ L 1650 -/- /972 /275 -/ Wind reactions based on MWFRS V Brg Wid = 3.5 Min Req = 1.5 (Truss) T Brg Wid = 3.5 Min Req = 2.5 (Truss) L Brg Wid = 3.5 Min Req = 1.9 (Truss) Bearings V, T, & L are a rigid surface. Members not listed have forces less than 375# <b>Maximum Top Chord Forces Per Ply (lbs)</b> Chords Tens.Comp. Chords Tens. Comp.

#### Lumber

Top chord: 2x4 SP #2;  
Bot chord: 2x4 SP #2;  
Webs: 2x4 SP #3;

#### Bracing

(a) Continuous lateral restraint equally spaced on member.

#### Loading

Truss passed check for 20 psf additional bottom chord live load in areas with 42"-high x 24"-wide clearance.

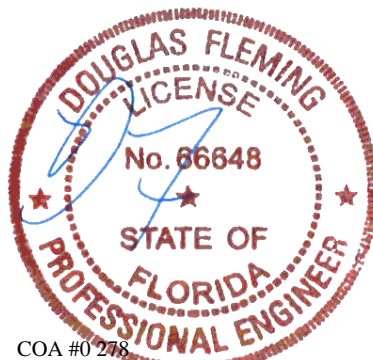
#### Wind

Wind loads based on MWFRS with additional C&C member design.  
Wind loading based on both gable and hip roof types.

#### Additional Notes

WARNING: Furnish a copy of this DWG to the installation contractor. Special care must be taken during handling, shipping and installation of trusses. See "WARNING" note below.

The overall height of this truss excluding overhang is 9'-4-3/8".



COA #0278  
Florida Certificate of Product Approval #FL1999  
10/14/2024

#### Maximum Bot Chord Forces Per Ply (lbs)

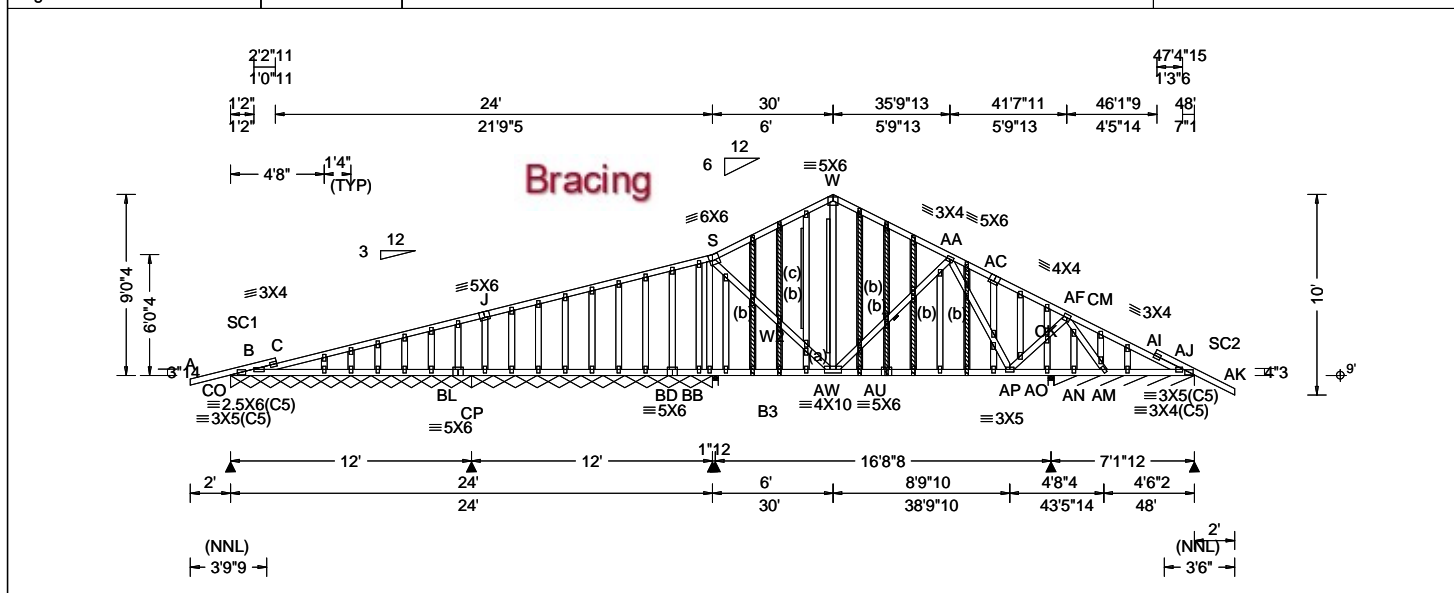
Chords	Tens.Comp.	Chords	Tens. Comp.
B - U	381 -506	Q - P	1798 -227
U - T	376 -515	P - O	1961 -290
T - S	1194 -84	O - N	1961 -290
S - R	1194 -84	N - L	2407 -423
R - Q	1798 -227		

#### Maximum Web Forces Per Ply (lbs)

Webs	Tens.Comp.	Webs	Tens. Comp.
C - T	214 -953	G - P	197 -445
T - F	463 -2797	H - P	1101 -211
F - R	818 -108	P - I	251 -693
R - G	203 -472	I - N	535 -42

**\*\*WARNING\*\*** READ AND FOLLOW ALL NOTES ON THIS DRAWING!  
**\*\*IMPORTANT\*\*** FURNISH THIS DRAWING TO ALL CONTRACTORS INCLUDING THE INSTALLERS  
Trusses require extreme care in fabricating, handling, shipping, installing and bracing. Refer to and follow the latest edition of BCSI (Building Component Safety Information, by TPI and SBCA) for safety practices prior to performing these functions. Installers shall provide temporary bracing per BCSI. Unless noted otherwise, top chord shall have properly attached structural sheathing and bottom chord shall have a properly attached rigid ceiling. Locations shown for permanent lateral restraint of webs shall have continuous lateral restraint (CLR), installed with diagonal bracing installed on the CLR per BCSI sections B3, B7, or B10, as applicable. Apply plates to each face of truss and position as shown above and on the Joint Details, unless noted otherwise. Refer to drawings 160A-Z for standard plate positions. Refer to job's General Notes page for additional information.  
Alpine, a division of ITW Building Components Group Inc. shall not be responsible for any deviation from this drawing, any failure to build the truss in conformance with ANSI/TPI 1, or for handling, shipping, installation and bracing of trusses. A seal on this drawing or cover page listing this drawing, indicates acceptance of professional engineering responsibility solely for the design shown. The suitability and use of this drawing for any structure is the responsibility of the Building Designer per ANSI/TPI 1 Sec.2.  
For more information see these web sites: Alpine: [alpineitw.com](http://alpineitw.com); TPI: [tpinst.org](http://tpinst.org); SBCA: [sbccomponents.com](http://sbccomponents.com); ICC: [iccsafe.org](http://iccsafe.org); AWC: [awc.org](http://awc.org)

**ALPINE**  
AN ITW COMPANY  
155 Harlem Ave  
North Building, 4th Floor  
Glenview, IL 60025



Loading Criteria (psf)	Wind Criteria	Snow Criteria (Pg,Pf in PSF)	Defl/CSI Criteria	▲ Maximum Reactions (lbs), or *PLF
TCLL: 20.00	Wind Std: ASCE 7-22	Pg: NA Ct: NA CAT: NA	PP Deflection in loc L/defl L/#	Gravity Non-Gravity
TCDL: 10.00	Speed: 130 mph	Pf: NA Ce: NA	VERT(LL): 0.083 AU 999 360	Loc R+ / R- / Rh / Rw / U / RL
BCLL: 0.00	Enclosure: Closed	Lu: NA Cs: NA	VERT(CL): 0.198 AU 999 240	CO*105 -/- /- /19 -/-
BCDL: 10.00	Risk Category: II	Snow Duration: NA	HORZ(LL): -0.028 Y - -	CP*180 -/- /- /23 -/-
Des Ld: 40.00	EXP: C Kzt: NA	Building Code:	HORZ(TL): 0.067 Y - -	BB 1156 -/- /- /97 -/-
NCBCLL: 10.00	Mean Height: 15.00 ft	FBC 8th Ed. 2023 Res.	Creep Factor: 2.0	AO 685 -/- /- /82 -/-
Soffit: 2.00	TCDL: 5.0 psf	TPI Std: 2014	Max TC CSI: 0.747	AJ* 246 -/- /- /35 -/-
Load Duration: 1.25	BCDL: 5.0 psf	Rep Fac: Varies by Ld Case	Max BC CSI: 0.833	Wind reactions based on MWFRS
Spacing: 24.0 "	MWFRS Parallel Dist: 0 to h/2	FT/RT:20(0)/10(0)	Max Web CSI: 0.904	CO Brg Wid = 144 Min Req = -
	C&C Dist a: 4.80 ft	Plate Type(s):	VIEW Ver: 23.02.04.0123.14	CP Brg Wid = 143 Min Req = -
	Loc. from endwall: Any	WAVE		BB Brg Wid = 3.5 Min Req = 1.5 (Truss)
	GCpi: 0.18			AO Brg Wid = 3.5 Min Req = 1.5 (Truss)
	Wind Duration: 1.60			AJ Brg Wid = 84.0 Min Req = -

**Lumber**

Top chord: 2x4 SP #2;  
Bot chord: 2x4 SP #2; B3 2x4 SP M-31;  
Webs: 2x4 SP #3; W2 2x4 SP #2;  
Stack Chord: SC1 2x4 SP #2;  
Stack Chord: SC2 2x4 SP #2;

**Special Loads**

----- (Lumber Dur.Fac.=1.25 / Plate Dur.Fac.=1.25)

TC: From	61 plf at	-2.00 to	61 plf at	24.00
TC: From	31 plf at	24.00 to	31 plf at	38.94
TC: From	62 plf at	38.94 to	62 plf at	50.00
BC: From	4 plf at	-2.00 to	4 plf at	0.00
BC: From	20 plf at	0.00 to	20 plf at	26.06
BC: From	10 plf at	26.06 to	10 plf at	38.94
BC: From	20 plf at	38.94 to	20 plf at	48.00
BC: From	4 plf at	48.00 to	4 plf at	50.00
BC:	149 lb Conc. Load at	26.06,28.06,30.06,32.06		

32.94,34.94,36.94,38.94

**Plating Notes**

All plates are 2X4 except as noted.

**Loading**

Truss designed to support 1-0-0 top chord outlookers and cladding load not to exceed 7.00 PSF one face and 24.0" span opposite face. Top chord must not be cut or notched, unless specified otherwise.

**Wind**

Wind loads and reactions based on MWFRS.

Wind loading based on both gable and hip roof types.

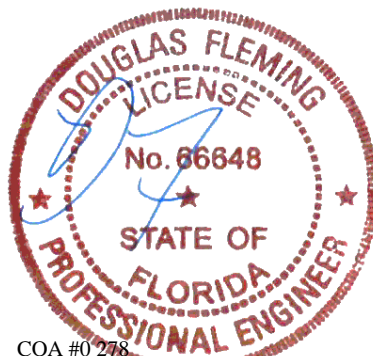
Gable meets L/120 deflection criteria for wind load applied to face. Calculated deflection ratio is L/149.

**Gable Reinforcement**

(a) 2x4 "L" reinforcement. Any species and grade. 80% length of web member. Attach with 10d (0.131"x3",min.) nails @ 2" oc at each end for the first 18" and then 4" oc for the remainder.

(b) 2x3 "T" reinforcement. Any species and grade. Full truss height along web member. Attach to the wide face with 10d (0.131"x3",min.) nails @ 4" oc in the web plus (2)10d (0.131"x3",min.) nails in each chord.

(c) 1x4 "L" reinforcement. Any species and grade. 80% length of web member. Attach with 10d (0.131"x3",min.) nails @ 2" oc at each end for the first 18" and then 4" oc for the remainder.



COA #0 278  
Florida Certificate of Product Approval #FL1999  
10/14/2024

Members not listed have forces less than 375#

**Maximum Top Chord Forces Per Ply (lbs)**

Chords	Tens.Comp.	Chords	Tens. Comp.
S - W	116 - 1067	AC-AF	145 - 1202
W - AA	128 - 1165	AF-AI	414 - 51
AA-AC	138 - 1177	AI-AJ	412 - 73

**Maximum Bot Chord Forces Per Ply (lbs)**

Chords	Tens.Comp.	Chords	Tens. Comp.
AW-AU	1302 - 147	AO-AN	513 - 73
AU-AP	1306 - 148		

**Maximum Web Forces Per Ply (lbs)**

Webs	Tens.Comp.	Webs	Tens. Comp.
BB- S	154 - 1409	AA-AF	64 - 641
S-AW	1488 - 161	AP-AF	1135 - 126
AW-AA	79 - 653	AF-AM	174 - 1392

**Maximum Gable Forces Per Ply (lbs)**

Gables	Tens.Comp.	Gables	Tens. Comp.
CK-AO	81 - 520	AN-CM	54 - 375

**\*\*WARNING\*\* READ AND FOLLOW ALL NOTES ON THIS DRAWING!**

**\*\*IMPORTANT\*\* FURNISH THIS DRAWING TO ALL CONTRACTORS INCLUDING THE INSTALLERS**

Trusses require extreme care in fabricating, handling, shipping, installing and bracing. Refer to and follow the latest edition of BCSI (Building Component Safety Information, by TPI and SBCA) for safety practices prior to performing these functions. Installers shall provide temporary bracing per BCSI. Unless noted otherwise, top chord shall have properly attached structural sheathing and bottom chord shall have a properly attached rigid ceiling. Locations shown for permanent lateral restraint of webs shall have continuous lateral restraint (CLR), installed with diagonal bracing installed on the CLR per BCSI sections B3, B7, or B10, as applicable. Apply plates to each face of truss and position as shown above and on the Joint Details, unless noted otherwise. Refer to drawings 160A-Z for standard plate positions. Refer to job's General Notes page for additional information.

Alpine, a division of ITW Building Components Group Inc. shall not be responsible for any deviation from this drawing, any failure to build the truss in conformance with ANSI/TPI 1, or for handling, shipping, installation and bracing of trusses. A seal on this drawing or cover page listing this drawing, indicates acceptance of professional engineering responsibility solely for the design shown. The suitability and use of this drawing for any structure is the responsibility of the Building Designer per ANSI/TPI 1 Sec.2.

For more information see these web sites: Alpine: [alpineitw.com](http://alpineitw.com); TPI: [tpinst.org](http://tpinst.org); SBCA: [sbcacomponents.com](http://sbcacomponents.com); ICC: [iccsafe.org](http://iccsafe.org); AWC: [awc.org](http://awc.org)

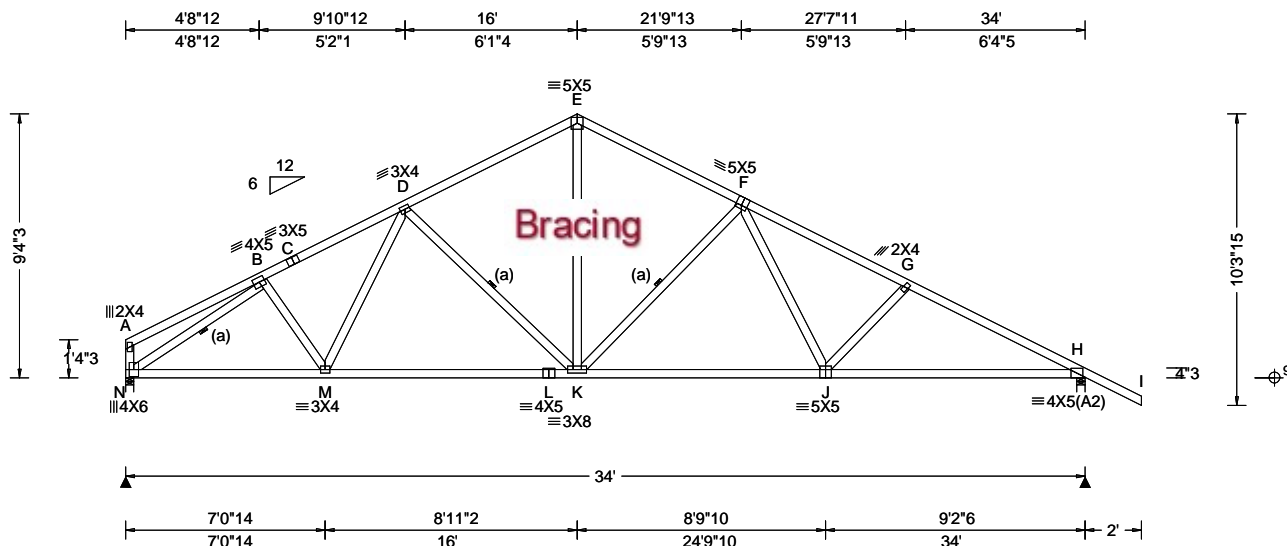
**ALPINE**  
AN ITW COMPANY

155 Harlem Ave  
North Building, 4th Floor  
Glenview, IL 60025





SEQN: 645500 FROM: RFG	COMN Ply: 1 Qty: 6	Job Number: 24-1859 Parsons Truss Label: A2	Cust: R 215 JRef: 1Y432150001 T3 DrwNo: 288.24.0816.36697 KD / DF 10/14/2024
---------------------------	--------------------------	---	--



Loading Criteria (psf)	Wind Criteria	Snow Criteria (Pg, Pf in PSF)	Defl/CSI Criteria	▲ Maximum Reactions (lbs)
TCLL: 20.00 TCDL: 10.00 BCLL: 0.00 BCDL: 10.00 Des Ld: 40.00 NCBCLL: 10.00 Soffit: 2.00 Load Duration: 1.25 Spacing: 24.0 "	Wind Std: ASCE 7-22 Speed: 130 mph Enclosure: Closed Risk Category: II EXP: C Kzt: NA Mean Height: 15.00 ft TCDL: 5.0 psf BCDL: 5.0 psf MWFRS Parallel Dist: 0 to h/2 C&C Dist a: 3.40 ft Loc. from endwall: Any GCpi: 0.18 Wind Duration: 1.60	Pg: NA Ct: NA CAT: NA Pf: NA Ce: NA Lu: NA Cs: NA Snow Duration: NA Building Code: FBC 8th Ed. 2023 Res. TPI Std: 2014 Rep Fac: Yes FT/RT: 20(0)/10(0) Plate Type(s): WAVE	PP Deflection in loc L/defl L/# VERT(LL): 0.139 F 999 360 VERT(CL): 0.263 F 999 240 HORZ(LL): 0.060 H - - HORZ(TL): 0.112 H - - Creep Factor: 2.0 Max TC CSI: 0.478 Max BC CSI: 0.994 Max Web CSI: 0.630 VIEW Ver: 23.02.04.0123.14	Gravity Loc R+ / R- / Rh / Rw / U / RL N 1518 -/- /- /796 /239 /256 H 1659 -/- /- /943 /278 -/ Wind reactions based on MWFRS N Brg Wid = 3.5 Min Req = 1.8 (Truss) H Brg Wid = 3.5 Min Req = 2.0 (Truss) Bearings N & H are a rigid surface. Members not listed have forces less than 375# Maximum Top Chord Forces Per Ply (lbs) Chords Tens.Comp. Chords Tens. Comp. B - C 823 -2216 E - F 763 -1756 C - D 842 -2180 F - G 939 -2545 D - E 762 -1760 G - H 985 -2795

#### Lumber

Top chord: 2x4 SP #2;  
Bot chord: 2x4 SP #2;  
Webs: 2x4 SP #3;

#### Bracing

(a) Continuous lateral restraint equally spaced on member.

#### Loading

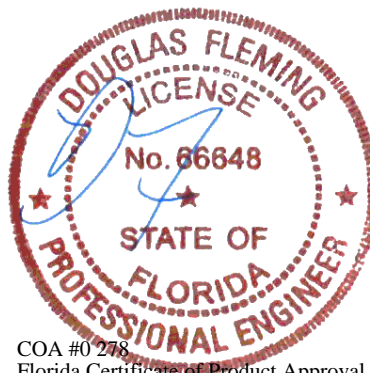
Truss passed check for 20 psf additional bottom chord live load in areas with 42"-high x 24"-wide clearance.

#### Wind

Wind loads based on MWFRS with additional C&C member design.  
Left end vertical not exposed to wind pressure.  
Wind loading based on both gable and hip roof types.

#### Additional Notes

The overall height of this truss excluding overhang is 9'-4".



COA #0278  
Florida Certificate of Product Approval #FL1999  
10/14/2024


**\*\*WARNING\*\*** READ AND FOLLOW ALL NOTES ON THIS DRAWING!  
**\*\*IMPORTANT\*\*** FURNISH THIS DRAWING TO ALL CONTRACTORS INCLUDING THE INSTALLERS  
Trusses require extreme care in fabricating, handling, shipping, installing and bracing. Refer to and follow the latest edition of BCSI (Building Component Safety Information, by TPI and SBCA) for safety practices prior to performing these functions. Installers shall provide temporary bracing per BCSI. Unless noted otherwise, top chord shall have properly attached structural sheathing and bottom chord shall have a properly attached rigid ceiling. Locations shown for permanent lateral restraint of webs shall have continuous lateral restraint (CLR), installed with diagonal bracing installed on the CLR per BCSI sections B3, B7, or B10, as applicable. Apply plates to each face of truss and position as shown above and on the Joint Details, unless noted otherwise. Refer to drawings 160A-Z for standard plate positions. Refer to job's General Notes page for additional information.  
Alpine, a division of ITW Building Components Group Inc. shall not be responsible for any deviation from this drawing, any failure to build the truss in conformance with ANSI/TPI 1, or for handling, shipping, installation and bracing of trusses. A seal on this drawing or cover page listing this drawing, indicates acceptance of professional engineering responsibility solely for the design shown. The suitability and use of this drawing for any structure is the responsibility of the Building Designer per ANSI/TPI 1 Sec.2.  
For more information see these web sites: Alpine: [alpineitw.com](http://alpineitw.com); TPI: [tpinst.org](http://tpinst.org); SBCA: [sbccomponents.com](http://sbccomponents.com); ICC: [iccsafe.org](http://iccsafe.org); AWC: [awc.org](http://awc.org)

**ALPINE**  
AN ITW COMPANY  
155 Harlem Ave  
North Building, 4th Floor  
Glenview, IL 60025

[illegible]

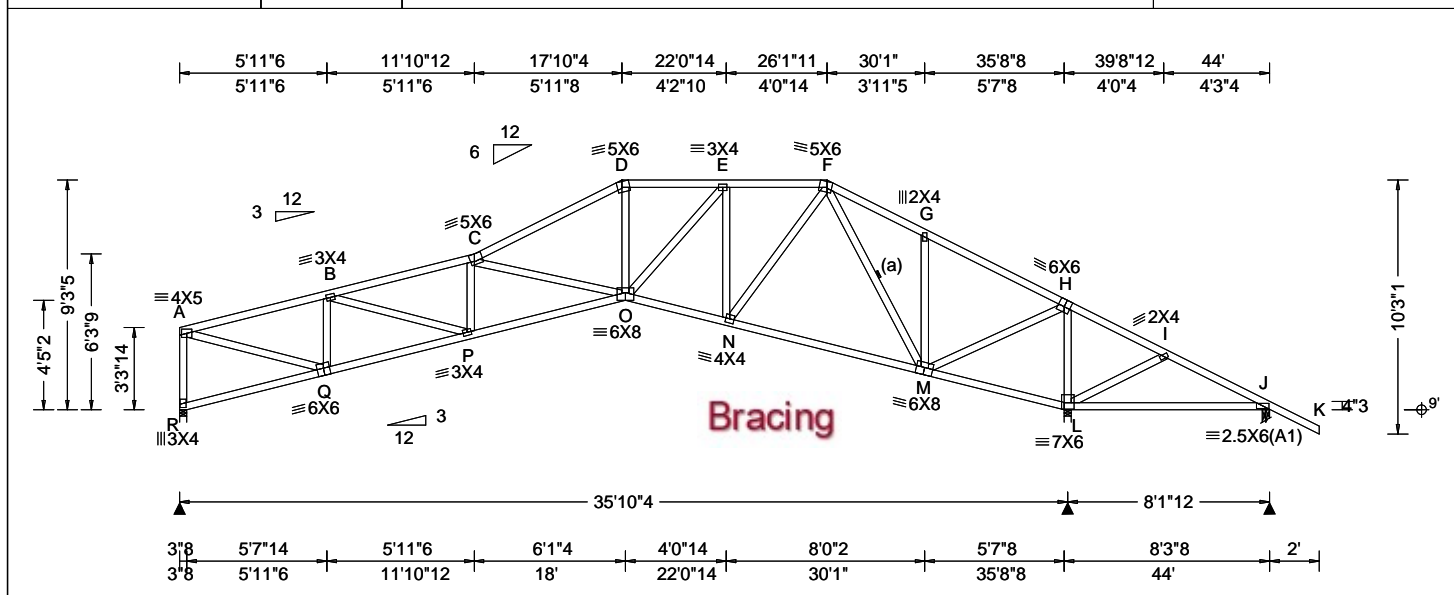
<p><b>Lumber</b></p> <p>Top chord: 2x4 SP #2;  Bot chord: 2x4 SP #2;  Webs: 2x4 SP #3;  Stack Chord: SC1 2x4 SP #2;</p> <p><b>Plating Notes</b></p> <p>All plates are 2X4 except as noted.</p> <p><b>Loading</b></p> <p>Truss designed to support 1-0-0 top chord outlookers and cladding load not to exceed 7.00 PSF one face and 24.0" span opposite face. Top chord must not be cut or notched, unless specified otherwise.</p> <p><b>Wind</b></p> <p>Wind loads based on MWFRS with additional C&amp;C member design.</p> <p>Left end vertical not exposed to wind pressure.</p> <p>Wind loading based on both gable and hip roof types.</p> <p>Gable meets L/120 deflection criteria for wind load applied to face. Calculated deflection ratio is L/198.</p> <p><b>Gable Reinforcement</b></p> <p>(a) 1x4 "L" reinforcement. Any species and grade. 80% length of web member. Attach with 10d (0.131"x3",min.) nails @ 2" oc at each end for the first 18" and then 4" oc for the remainder.</p> <p>(b) 2x4 SP/DF #2 or better "L" reinforcement. 80% length of web member. Attach with 10d (0.131"x3",min.) nails @ 2" oc at each end for the first 18" and then 4" oc for the remainder.</p>	<p><b>Additional Notes</b></p> <p>Exposed portion of gable face shall be reinforced with sheathing and the wind pressures shall be transferred into lateral diaphragms. Connections and designs for diaphragms is the responsibility of the Building Designer in accordance with ANSI/TPI 1.</p> <p>Stacked top chord must NOT be notched or cut in area (NNL). Dropped top chord braced at 24" oc intervals. Attach stacked top chord (SC) to dropped top chord in noticable area using 3x4 tie-plates 24" oc. Center plate on stacked/dropped chord interface, plate length perpendicular to chord length. Splice top chord in noticable area using 3x6.</p> <p>The overall height of this truss excluding overhang is 9-0-4.</p>
--	---

**\*\*WARNING\*\*** READ AND FOLLOW ALL NOTES ON THIS DRAWING!  
**\*\*IMPORTANT\*\*** FURNISH THIS DRAWING TO ALL CONTRACTORS INCLUDING THE INSTALLERS  
 Trusses require extreme care in fabricating, handling, shipping, installing and bracing. Refer to and follow the latest edition of BCSI (Building Component Safety Information) and SBCA for safety practices prior to performing these functions. Installers shall provide temporary bracing per BCSI. Unless noted otherwise, top chord shall be braced and attached structural sheathing and bottom chord shall have a properly attached rigid ceiling. Locations shown for permanent lateral restraint of webs shall have continuous lateral restraint (CLR), installed with diagonal bracing installed on the CLR per BCSI sections B3, B7, or B10, as applicable. Apply plates to each face of truss and position as shown above and on the Joint Details, unless noted otherwise. Refer to drawings 160A-Z for standard plate positions. Refer to job's General Notes page for additional information.  
 Alpine, a division of ITW Building Components Group Inc. shall not be responsible for any deviation from this drawing, any failure to build the truss in conformance with ANSI/TPI 1, or for handling, shipping, installation and bracing of trusses. A seal on this drawing or cover page listing this drawing, indicates acceptance of professional engineering responsibility solely for the design shown. The suitability and use of this drawing for any structure is the responsibility of the Building Designer per ANSI/TPI 1 Sec.2.  
 For more information see these web sites: Alpine: [alpineitw.com](http://alpineitw.com); TPI: [tointst.org](http://tointst.org); SBCA: [sbccomponents.com](http://sbccomponents.com); ICC: [iccsafe.org](http://iccsafe.org); AWC: [awc.org](http://awc.org)



155 Harlem Ave  
 North Building, 4th Floor  
 Glenview, IL 60025

SEQN: 645523 FROM: RFG	COMN Ply: 1 Qty: 11	Job Number: 24-1859 Parsons Truss Label: B1	Cust: R 215 JRef: 1Y432150001 T26 DrwNo: 288.24.0816.42280 KD / DF 10/14/2024
---------------------------	---------------------------	---	---



Loading Criteria (psf)	Wind Criteria	Snow Criteria (Pg, Pf in PSF)	Defl/CSI Criteria	Maximum Reactions (lbs)
TCLL: 20.00 TCDL: 10.00 BCLL: 0.00 BCDL: 10.00 Des Ld: 40.00 NCBCLL: 10.00 Soffit: 2.00 Load Duration: 1.25 Spacing: 24.0 "	Wind Std: ASCE 7-22 Speed: 130 mph Enclosure: Closed Risk Category: II EXP: C Kzt: NA Mean Height: 15.00 ft TCDL: 5.0 psf BCDL: 5.0 psf MWFRS Parallel Dist: h to 2h C&C Dist a: 4.40 ft Loc. from endwall: not in 13.00 ft GCp: 0.18 Wind Duration: 1.60	Pg: NA Ct: NA CAT: NA Pf: NA Ce: NA Lu: NA Cs: NA Snow Duration: NA Building Code: FBC 8th Ed. 2023 Res. TPI Std: 2014 Rep Fac: Yes FT/RT: 20(0)/10(0) Plate Type(s): WAVE	PP Deflection in loc L/def L/# VERT(LL): 0.204 C 999 360 VERT(CL): 0.420 C 999 240 HORZ(LL): 0.127 L - - HORZ(TL): 0.263 L - - Creep Factor: 2.0 Max TC CSI: 0.645 Max BC CSI: 0.832 Max Web CSI: 0.799 VIEW Ver: 23.02.04.0123.14	Gravity Loc R+ / R- / Rh / Rw / U / RL R 1274 - / - / /683 - / /231 L 2848 - / - / /1490 - / - J 35 - / -589 - / /138 /353 - Wind reactions based on MWFRS R Brg Wid = 3.5 Min Req = 1.5 (Truss) L Brg Wid = 3.5 Min Req = 3.4 (Truss) J Brg Wid = 3.5 Min Req = 1.5 (Truss) Bearings R, L, & J are a rigid surface. Members not listed have forces less than 375# Maximum Top Chord Forces Per Ply (lbs) Chords Tens.Comp. Chords Tens. Comp.

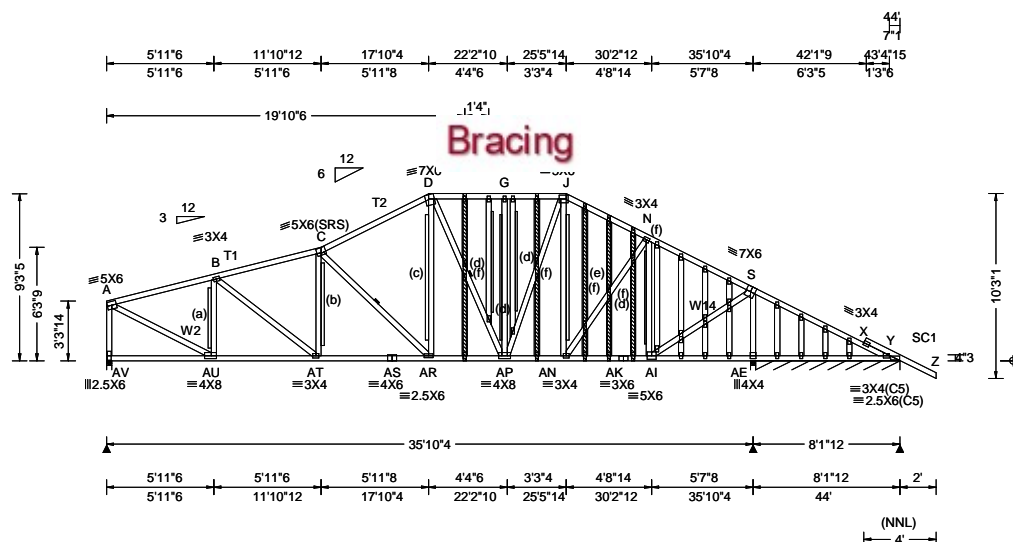
Lumber	Maximum Bot Chord Forces Per Ply (lbs)
Top chord: 2x4 SP #2; Bot chord: 2x4 SP #2; Webs: 2x4 SP #3;	Chords Tens.Comp. Chords Tens. Comp. A - B 192 -2125 F - G 245 -376 B - C 276 -3205 G - H 125 -392 C - D 67 -2488 H - I 1863 -66 D - E 117 -2175 I - J 1640 -24 E - F 59 -1485

Bracing	Maximum Bot Chord Forces Per Ply (lbs)
(a) Continuous lateral restraint equally spaced on member.	Chords Tens.Comp. Chords Tens. Comp. Q - P 2170 -121 N - M 860 0 P - O 3210 -69 M - L 230 -1716 O - N 1584 0 L - J 121 -1428

Wind	Maximum Web Forces Per Ply (lbs)
Wind loads based on MWFRS with additional C&C member design. Left end vertical not exposed to wind pressure. Wind loading based on both gable and hip roof types.	Chords Tens.Comp. Chords Tens. Comp. A - R 124 -1224 O - E 987 -91 A - Q 2086 -167 E - N 0 -987 Q - B 152 -958 N - F 1160 0 B - P 1018 -26 F - M 0 -1194 P - C 83 -422 M - H 2097 -13 C - O 332 -980 L - H 193 -2133 D - O 744 0

Additional Notes	Professional Engineer
Negative reaction(s) of -589# MAX. from a non-wind load case requires uplift connection. See Maximum Reactions. Shim all supports to solid bearing. The overall height of this truss excluding overhang is 9-3-5.	DOUGLAS FLEMING LICENSE No. 66648 STATE OF FLORIDA PROFESSIONAL ENGINEER COA #0278 Florida Certificate of Product Approval #FL1999 10/14/2024

**WARNING**	ALPINE
READ AND FOLLOW ALL NOTES ON THIS DRAWING! **IMPORTANT** FURNISH THIS DRAWING TO ALL CONTRACTORS INCLUDING THE INSTALLERS Trusses require extreme care in fabricating, handling, shipping, installing and bracing. Refer to and follow the latest edition of BCSI (Building Component Safety Information, by TPI and SBCA) for safety practices prior to performing these functions. Installers shall provide temporary bracing per BCSI. Unless noted otherwise, top chord shall have properly attached structural sheathing and bottom chord shall have a properly attached rigid ceiling. Locations shown for permanent lateral restraint of webs shall have continuous lateral restraint (CLR), installed with diagonal bracing installed on the CLR per BCSI sections B3, B7, or B10, as applicable. Apply plates to each face of truss and position as shown above and on the Joint Details, unless noted otherwise. Refer to drawings 160A-Z for standard plate positions. Refer to job's General Notes page for additional information. Alpine, a division of ITW Building Components Group Inc. shall not be responsible for any deviation from this drawing, any failure to build the truss in conformance with ANSI/TPI 1, or for handling, shipping, installation and bracing of trusses. A seal on this drawing or cover page listing this drawing, indicates acceptance of professional engineering responsibility solely for the design shown. The suitability and use of this drawing for any structure is the responsibility of the Building Designer per ANSI/TPI 1 Sec.2. For more information see these web sites: Alpine: alpineitw.com; TPI: tpinst.org; SBCA: sbcacomponents.com; ICC: iccsafe.org; AWC: awc.org	155 Harlem Ave North Building, 4th Floor Glenview, IL 60025



Loading Criteria (psf)	Wind Criteria	Snow Criteria (Pg, Pf in PSF)	Defl/CSI Criteria	▲ Maximum Reactions (lbs), or * = PLF
TCLL: 20.00 TCDL: 10.00 BCLL: 0.00 BCDL: 10.00 Des Ld: 40.00 NCBCLL: 10.00 Soffit: 2.00 Load Duration: 1.25 Spacing: 24.0 "	Wind Std: ASCE 7-22 Speed: 130 mph Enclosure: Closed Risk Category: II EXP: C Kzt: NA Mean Height: 15.00 ft TCDL: 5.0 psf BCDL: 5.0 psf MWFRS Parallel Dist: 0 to h/2 C&C Dist a: 4.40 ft Loc. from endwall: not in 10.00 ft GCpi: 0.18 Wind Duration: 1.60	Pg: NA Ct: NA CAT: NA Pf: NA Ce: NA Lu: NA Cs: NA Snow Duration: NA Building Code: FBC 8th Ed. 2023 Res. TPI Std: 2014 Rep Fac: Varies by Ld Case FT/RT: 20(0)/10(0) Plate Type(s): WAVE	PP Deflection in loc L/defl L/# VERT(LL): 0.099 C 999 360 VERT(CL): 0.276 C 999 240 HORZ(LL): 0.034 AI - - HORZ(TL): 0.096 AI - - Creep Factor: 2.0 Max TC CSI: 0.650 Max BC CSI: 0.788 Max Web CSI: 0.991 VIEW Ver: 23.02.04.0123.14	Gravity Loc R+ / R- / Rh / Rw / U / RL AV 2225 - / - / /819 /124 /263 AE 3177 - / - / /1132 /63 - / - Y* 72 - / - / /50 /18 - / - Non-Gravity Wind reactions based on MWFRS AV Brg Wid = 3.5 Min Req = 2.6 (Truss) AE Brg Wid = 3.5 Min Req = 3.4 (Truss) Y Brg Wid = 96.0 Min Req = - Bearings AV, AE, & AE are a rigid surface. Members not listed have forces less than 375# Maximum Top Chord Forces Per Ply (lbs) Chords Tens.Comp. Chords Tens. Comp.

**Lumber**  
Top chord: 2x4 SP #2; T1,T2 2x4 SP M-31;  
Bot chord: 2x4 SP #2;  
Webs: 2x4 SP #3; W2,W14 2x4 SP #2;  
Stack Chord: SC1 2x4 SP #2;

**Plating Notes**  
All plates are 2X4 except as noted.

**Loading**  
Truss designed to support 1-0-0 top chord outlookers and cladding load not to exceed 7.00 PSF one face and 24.0" span opposite face. Top chord must not be cut or notched, unless specified otherwise.

**Purlins**  
In lieu of structural panels use purlins to brace all sloping TC @ 24" oc; all flat TC @ 0" oc.

**Wind**  
Wind loads based on MWFRS with additional C&C member design.  
Left end vertical not exposed to wind pressure.  
Wind loading based on both gable and hip roof types.  
Gable meets L/120 deflection criteria for wind load applied to face. Calculated deflection ratio is L/207.

**Additional Notes**  
Exposed portion of gable face shall be reinforced with sheathing and the wind pressures shall be transferred into lateral diaphragms. Connections and designs for diaphragms is the responsibility of the Building Designer in accordance with ANSI/TPI 1.  
Stacked top chord must NOT be notched or cut in area (NNL). Dropped top chord braced at 24" oc intervals. Attach stacked top chord (SC) to dropped top chord in noticable area using 3x4 tie-plates 24" oc. Center plate on stacked/dropped chord interface, plate length perpendicular to chord length. Splice top chord in noticable area using 3x6.  
The overall height of this truss excluding overhang is 9-3-5.

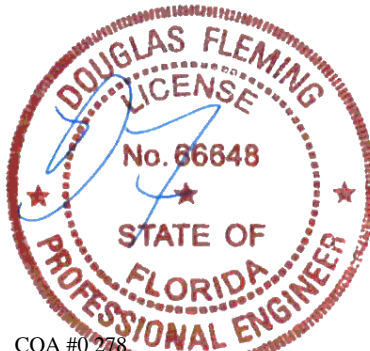
Chords	Tens.Comp.	Chords	Tens. Comp.
A - B	262 - 2679	J - N	281 - 2186
B - C	352 - 3300	N - S	233 - 1729
C - D	301 - 2846	S - X	820 - 69
D - G	269 - 2230	X - Y	730 - 153
G - J	269 - 2229		

Chords	Tens.Comp.	Chords	Tens. Comp.
AU-AT	2612 - 94	AN-AK	1521 0
AT-AS	3142 - 114	AK-AI	1521 0
AS-AR	3142 - 114	AI-AE	152 - 633
AR-AP	2394 0	AE-Y	156 - 692
AP-AN	1891 0		

Webs	Tens.Comp.	Webs	Tens. Comp.
A - AV	218 - 2197	D - AP	165 - 417
A - AU	2845 - 255	AP - J	962 - 23
AU - B	183 - 1257	AN - N	700 - 28
B - AT	663 - 137	N - AI	0 - 993
C - AR	280 - 1061	AI - S	2613 - 80
D - AR	840 - 118	S - AE	172 - 2790



COA #0 278  
Florida Certificate of Product Approval #FL1999  
10/14/2024

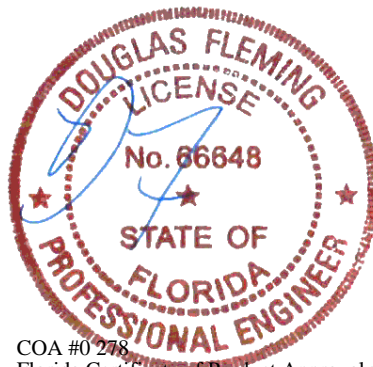
**\*\*WARNING\*\*** READ AND FOLLOW ALL NOTES ON THIS DRAWING!  
**\*\*IMPORTANT\*\*** FURNISH THIS DRAWING TO ALL CONTRACTORS INCLUDING THE INSTALLERS  
Trusses require extreme care in fabricating, handling, shipping, installing and bracing. Refer to and follow the latest edition of BCSI (Building Component Safety Information, by TPI and SBCA) for safety practices prior to performing these functions. Installers shall provide temporary bracing per BCSI. Unless noted otherwise, top chord shall have properly attached structural sheathing and bottom chord shall have a properly attached rigid ceiling. Locations shown for permanent lateral restraint of webs shall have continuous lateral restraint (CLR), installed with diagonal bracing installed on the CLR per BCSI sections B3, B7, or B10, as applicable. Apply plates to each face of truss and position as shown above and on the Joint Details, unless noted otherwise. Refer to drawings 160A-Z for standard plate positions. Refer to job's General Notes page for additional information.  
Alpine, a division of ITW Building Components Group Inc. shall not be responsible for any deviation from this drawing, any failure to build the truss in conformance with ANSI/TPI 1, or for handling, shipping, installation and bracing of trusses. A seal on this drawing or cover page listing this drawing, indicates acceptance of professional engineering responsibility solely for the design shown. The suitability and use of this drawing for any structure is the responsibility of the Building Designer per ANSI/TPI 1 Sec.2.  
For more information see these web sites: Alpine: alpineitw.com; TPI: tpinst.org; SBCA: sbcacomponents.com; ICC: iccsafe.org; AWC: awc.org

**ALPINE**  
AN ITW COMPANY  
155 Harlem Ave  
North Building, 4th Floor  
Glenview, IL 60025

SEQN: 645532	GABL	Ply: 1	Job Number: 24-1859	Cust: R 215 JRef: 1Y432150001 T10
FROM: RFG		Qty: 1	Parsons	DrwNo: 288.24.0816.47897
Page 2 of 2			Truss Label: B1E	KD / DF 10/14/2024

#### Gable Reinforcement

- (a) 2x4 "L" reinforcement. Any species and grade. 80% length of web member. Attach with 10d (0.131"x3",min.) nails @ 2" oc at each end for the first 18" and then 4" oc for the remainder.
- (b) 2x6 "L" reinforcement. Any species and grade. 80% length of web member. Attach with 10d (0.131"x3",min.) nails @ 2" oc at each end for the first 18" and then 4" oc for the remainder.
- (c) 2x6 SP/DF #2 or better "L" reinforcement. 80% length of web member. Attach with 10d (0.131"x3",min.) nails @ 2" oc at each end for the first 18" and then 4" oc for the remainder.
- (d) 1x4 "L" reinforcement. Any species and grade. 80% length of web member. Attach with 10d (0.131"x3",min.) nails @ 2" oc at each end for the first 18" and then 4" oc for the remainder.
- (e) 2x4 "L" reinforcement. Same species and grade as web. 80% length of web member. Attach with 10d (0.131"x3",min.) nails @ 2" oc at each end for the first 18" and then 4" oc for the remainder.
- (f) 2x3 "T" reinforcement. Any species and grade. Full truss height along web member. Attach to the wide face with 10d (0.131"x3",min.) nails @ 4" oc in the web plus (2)10d (0.131"x3",min.) nails in each chord.



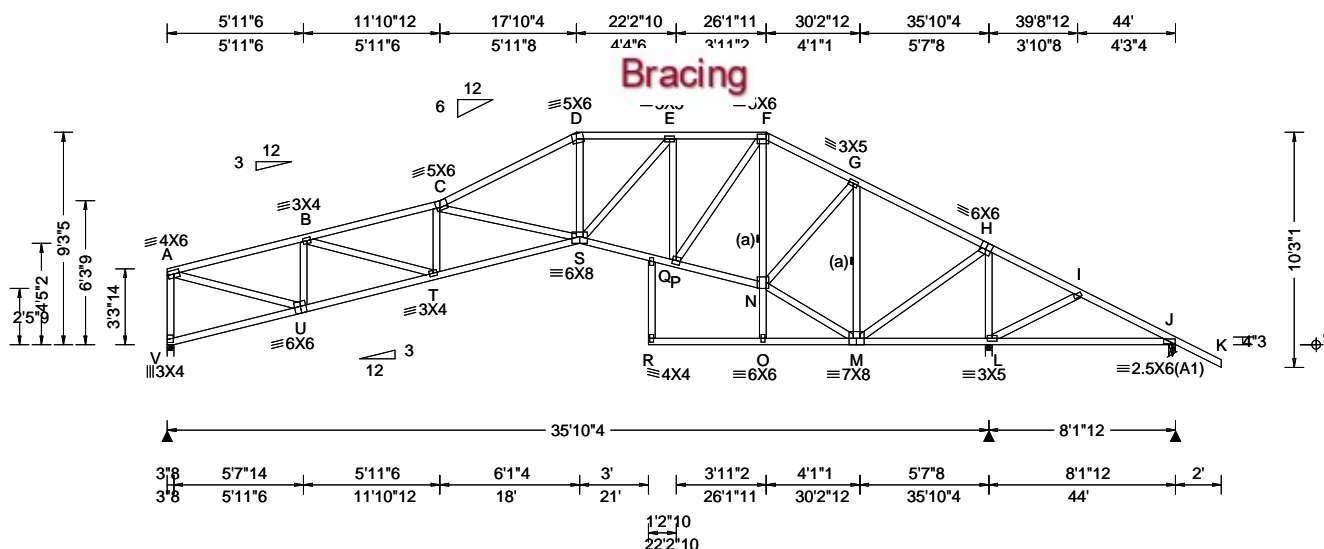
COA #0 278  
Florida Certificate of Product Approval #FL1999  
10/14/2024

**\*\*WARNING\*\*** READ AND FOLLOW ALL NOTES ON THIS DRAWING!  
**\*\*IMPORTANT\*\*** FURNISH THIS DRAWING TO ALL CONTRACTORS INCLUDING THE INSTALLERS  
Trusses require extreme care in fabricating, handling, shipping, installing and bracing. Refer to and follow the latest edition of BCSI (Building Component Safety Information, by TPI and SBCA) for safety practices prior to performing these functions. Installers shall provide temporary bracing per BCSI. Unless noted otherwise, top chord shall have properly attached structural sheathing and bottom chord shall have a properly attached rigid ceiling. Locations shown for permanent lateral restraint of webs shall have continuous lateral restraint (CLR), installed with diagonal bracing installed on the CLR per BCSI sections B3, B7, or B10, as applicable. Apply plates to each face of truss and position as shown above and on the Joint Details, unless noted otherwise. Refer to drawings 160A-Z for standard plate positions. Refer to job's General Notes page for additional information.  
Alpine, a division of ITW Building Components Group Inc. shall not be responsible for any deviation from this drawing, any failure to build the truss in conformance with ANSI/TPI 1, or for handling, shipping, installation and bracing of trusses. A seal on this drawing or cover page listing this drawing, indicates acceptance of professional engineering responsibility solely for the design shown. The suitability and use of this drawing for any structure is the responsibility of the Building Designer per ANSI/TPI 1 Sec.2.  
For more information see these web sites: Alpine: [alpineitw.com](http://alpineitw.com); TPI: [tpinst.org](http://tpinst.org); SBCA: [sbcacomponents.com](http://sbcacomponents.com); ICC: [iccsafe.org](http://iccsafe.org); AWC: [awc.org](http://awc.org)

**ALPINE**  
AN ITW COMPANY  
155 Harlem Ave  
North Building, 4th Floor  
Glenview, IL 60025



SEQN: 645525 FROM: RFG	COMN Ply: 1 Qty: 1	Job Number: 24-1859 Parsons Truss Label: B2	Cust: R 215 JRRef: 1Y432150001 T13 DrwNo: 288.24.0816.59477 KD / DF 10/14/2024
---------------------------	--------------------------	---	--



Loading Criteria (psf)	Wind Criteria	Snow Criteria (Pg, Pf in PSF)	Defl/CSI Criteria	▲ Maximum Reactions (lbs)
TCLL: 20.00 TCDL: 10.00 BCLL: 0.00 BCDL: 10.00 Des Ld: 40.00 NCBCLL: 10.00 Soffit: 2.00 Load Duration: 1.25 Spacing: 24.0 "	Wind Std: ASCE 7-22 Speed: 130 mph Enclosure: Closed Risk Category: II EXP: C Kzt: NA Mean Height: 15.00 ft TCDL: 5.0 psf BCDL: 5.0 psf MWFRS Parallel Dist: h to 2h C&C Dist a: 4.40 ft Loc. from endwall: not in 13.00 ft GCp: 0.18 Wind Duration: 1.60	Pg: NA Ct: NA CAT: NA Pf: NA Ce: NA Lu: NA Cs: NA Snow Duration: NA Building Code: FBC 8th Ed. 2023 Res. TPI Std: 2014 Rep Fac: Yes FT/RT:20(0)/10(0) Plate Type(s): WAVE	PP Deflection in loc L/defl L/# VERT(LL): 0.215 C 999 360 VERT(CL): 0.441 C 979 240 HORZ(LL): 0.140 M - - HORZ(TL): 0.289 M - - Creep Factor: 2.0 Max TC CSI: 0.653 Max BC CSI: 0.838 Max Web CSI: 0.899 VIEW Ver: 23.02.04.0123.14	Gravity Loc R+ / R- / Rh / Rw / U / RL V 1299 - / - / - /694 - /231 L 2797 - / - / - /1461 - / - J 39 - /566 - / - /141 /348 - Non-Gravity V Brg Wid = 3.5 Min Req = 1.5 (Truss) L Brg Wid = 3.5 Min Req = 2.9 (Truss) J Brg Wid = 3.5 Min Req = 1.5 (Truss) Bearings V, L, & J are a rigid surface. Members not listed have forces less than 375# <b>Maximum Top Chord Forces Per Ply (lbs)</b> Chords Tens.Comp. Chords Tens. Comp.

#### Lumber

Top chord: 2x4 SP #2;  
Bot chord: 2x4 SP #2;  
Webs: 2x4 SP #3;

#### Bracing

(a) Continuous lateral restraint equally spaced on member.

#### Plating Notes

All plates are 2X4 except as noted.

#### Wind

Wind loads based on MWFRS with additional C&C member design.

Left end vertical not exposed to wind pressure.

Wind loading based on both gable and hip roof types.

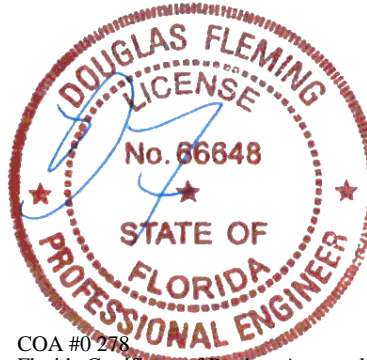
#### Additional Notes

Negative reaction(s) of -566# MAX. from a non-wind load case requires uplift connection. See Maximum Reactions.

Shim all supports to solid bearing.

The overall height of this truss excluding overhang is 9'-3"-5".

Note: Laterally brace bottom chord above filler at 20" O.C.Max. including a lateral brace at chord ends.

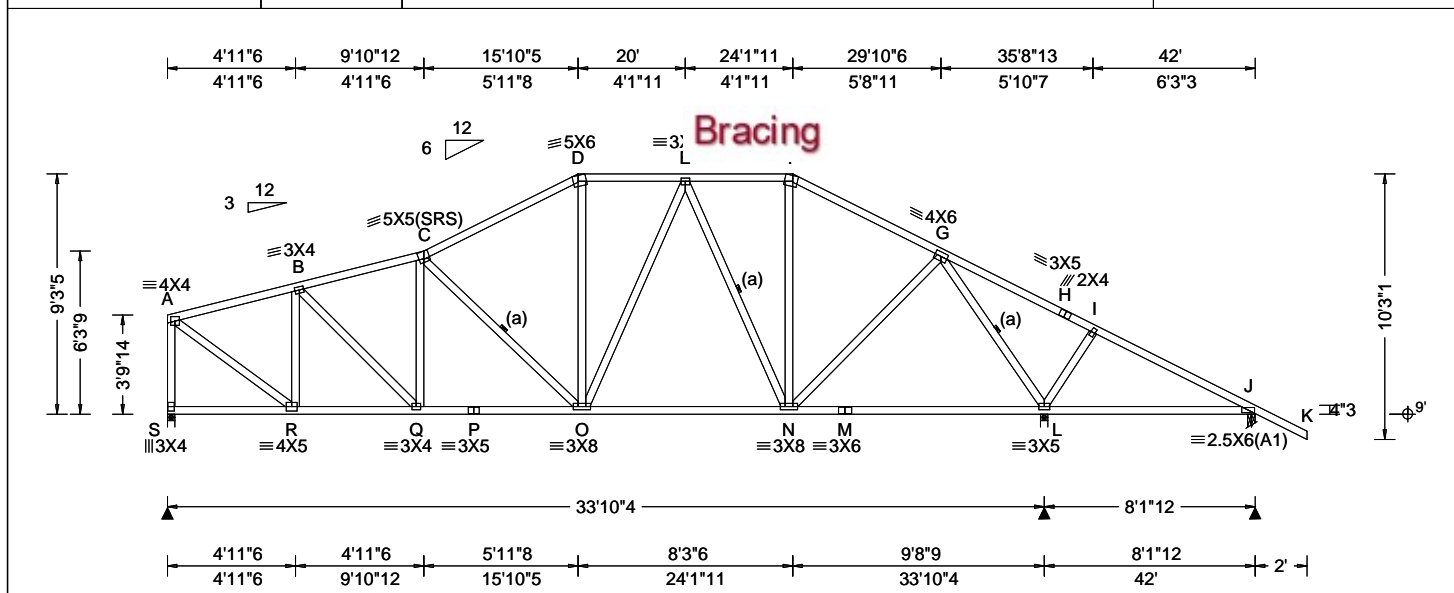


COA #0 278  
Florida Certificate of Product Approval #FL1999  
10/14/2024

**\*\*WARNING\*\*** READ AND FOLLOW ALL NOTES ON THIS DRAWING!  
**\*\*IMPORTANT\*\*** FURNISH THIS DRAWING TO ALL CONTRACTORS INCLUDING THE INSTALLERS  
Trusses require extreme care in fabricating, handling, shipping, installing and bracing. Refer to and follow the latest edition of BCSI (Building Component Safety Information, by TPI and SBCA) for safety practices prior to performing these functions. Installers shall provide temporary bracing per BCSI. Unless noted otherwise, top chord shall have properly attached structural sheathing and bottom chord shall have a properly attached rigid ceiling. Locations shown for permanent lateral restraint of webs shall have continuous lateral restraint (CLR), installed with diagonal bracing installed on the CLR per BCSI sections B3, B7, or B10, as applicable. Apply plates to each face of truss and position as shown above and on the Joint Details, unless noted otherwise. Refer to drawings 160A-Z for standard plate positions. Refer to job's General Notes page for additional information.  
Alpine, a division of ITW Building Components Group Inc. shall not be responsible for any deviation from this drawing, any failure to build the truss in conformance with ANSI/TPI 1, or for handling, shipping, installation and bracing of trusses. A seal on this drawing or cover page listing this drawing, indicates acceptance of professional engineering responsibility solely for the design shown. The suitability and use of this drawing for any structure is the responsibility of the Building Designer per ANSI/TPI 1 Sec.2.  
For more information see these web sites: Alpine: [alpineitw.com](http://alpineitw.com); TPI: [tpinst.org](http://tpinst.org); SBCA: [sbccomponents.com](http://sbccomponents.com); ICC: [iccsafe.org](http://iccsafe.org); AWC: [awc.org](http://awc.org)

**ALPINE**  
AN ITW COMPANY  
155 Harlem Ave  
North Building, 4th Floor  
Glenview, IL 60025

SEQN: 645512 FROM: RFG	COMN Ply: 1 Qty: 4	Job Number: 24-1859 Parsons Truss Label: C1	Cust: R 215 JRef: 1Y432150001 T27 DrwNo: 288.24.0817.01957 KD / DF 10/14/2024
---------------------------	--------------------------	---	---



Loading Criteria (psf)	Wind Criteria	Snow Criteria (Pg, Pf in PSF)	Defl/CSI Criteria	▲ Maximum Reactions (lbs)
TCLL: 20.00 TCDL: 10.00 BCLL: 0.00 BCDL: 10.00 Des Ld: 40.00 NCBCLL: 10.00 Soffit: 2.00 Load Duration: 1.25 Spacing: 24.0 "	Wind Std: ASCE 7-22 Speed: 130 mph Enclosure: Closed Risk Category: II EXP: C Kzt: NA Mean Height: 15.00 ft TCDL: 5.0 psf BCDL: 5.0 psf MWFRS Parallel Dist: h to 2h C&C Dist a: 4.20 ft Loc. from endwall: not in 13.00 ft GCp: 0.18 Wind Duration: 1.60	Pg: NA Ct: NA CAT: NA Pf: NA Ce: NA Lu: NA Cs: NA Snow Duration: NA Building Code: FBC 8th Ed. 2023 Res. TPI Std: 2014 Rep Fac: Yes FT/RT: 20(0)/10(0) Plate Type(s): WAVE	PP Deflection in loc L/defl L/# VERT(LL): 0.080 O 999 360 VERT(CL): 0.147 O 999 240 HORZ(LL): 0.031 L - - HORZ(TL): 0.058 L - - Creep Factor: 2.0 Max TC CSI: 0.479 Max BC CSI: 0.917 Max Web CSI: 0.633 VIEW Ver: 23.02.04.0123.14	Gravity Loc R+ / R- / Rh / Rw / U / RL S 1466 -/- /- /751 -/- /230 L 2268 -/- /- /1211 -/- /- J 328 -/8 -/- /256 /73 -/- Wind reactions based on MWFRS S Brg Wid = 3.5 Min Req = 1.7 (Truss) L Brg Wid = 3.5 Min Req = 2.3 (Truss) J Brg Wid = 3.5 Min Req = 1.5 (Truss) Bearings S, L, & J are a rigid surface. Members not listed have forces less than 375# <b>Maximum Top Chord Forces Per Ply (lbs)</b> Chords Tens.Comp. Chords Tens. Comp.

#### Lumber

Top chord: 2x4 SP #2;  
Bot chord: 2x4 SP #2;  
Webs: 2x4 SP #3;

#### Bracing

(a) Continuous lateral restraint equally spaced on member.

#### Loading

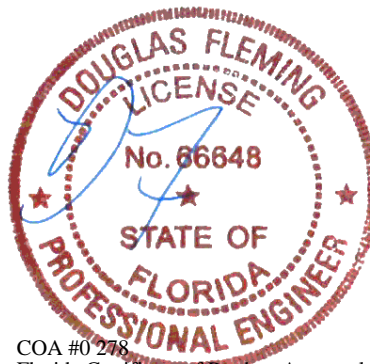
Truss passed check for 20 psf additional bottom chord live load in areas with 42"-high x 24"-wide clearance.

#### Wind

Wind loads based on MWFRS with additional C&C member design.  
Left end vertical not exposed to wind pressure.  
Wind loading based on both gable and hip roof types.

#### Additional Notes

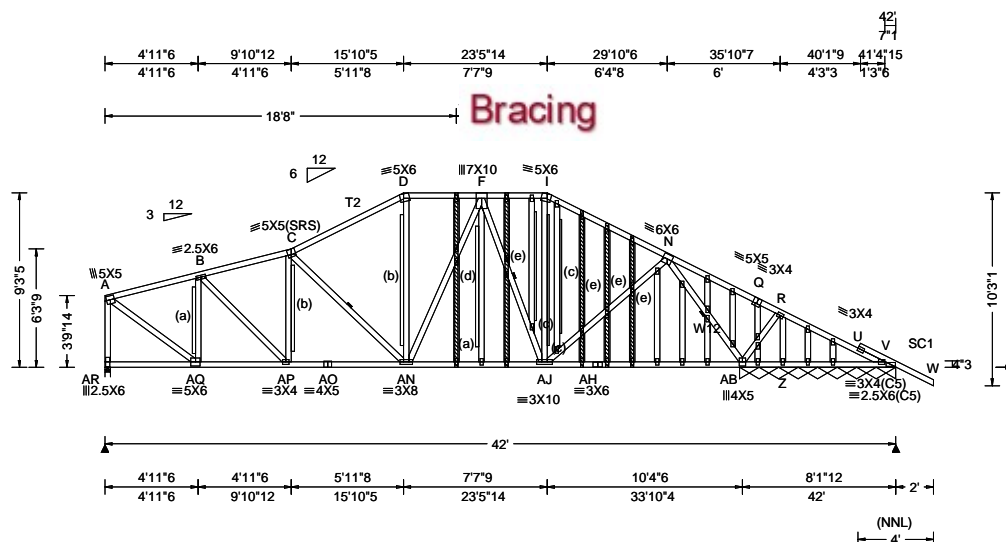
The overall height of this truss excluding overhang is 9'-3-5".



COA #0 278  
Florida Certificate of Product Approval #FL1999  
10/14/2024

**\*\*WARNING\*\*** READ AND FOLLOW ALL NOTES ON THIS DRAWING!  
**\*\*IMPORTANT\*\*** FURNISH THIS DRAWING TO ALL CONTRACTORS INCLUDING THE INSTALLERS  
Trusses require extreme care in fabricating, handling, shipping, installing and bracing. Refer to and follow the latest edition of BCSI (Building Component Safety Information, by TPI and SBCA) for safety practices prior to performing these functions. Installers shall provide temporary bracing per BCSI. Unless noted otherwise, top chord shall have properly attached structural sheathing and bottom chord shall have a properly attached rigid ceiling. Locations shown for permanent lateral restraint of webs shall have continuous lateral restraint (CLR), installed with diagonal bracing installed on the CLR per BCSI sections B3, B7, or B10, as applicable. Apply plates to each face of truss and position as shown above and on the Joint Details, unless noted otherwise. Refer to drawings 160A-Z for standard plate positions. Refer to job's General Notes page for additional information.  
Alpine, a division of ITW Building Components Group Inc. shall not be responsible for any deviation from this drawing, any failure to build the truss in conformance with ANSI/TPI 1, or for handling, shipping, installation and bracing of trusses. A seal on this drawing or cover page listing this drawing, indicates acceptance of professional engineering responsibility solely for the design shown. The suitability and use of this drawing for any structure is the responsibility of the Building Designer per ANSI/TPI 1 Sec.2.  
For more information see these web sites: Alpine: [alpineitw.com](http://alpineitw.com); TPI: [tpinst.org](http://tpinst.org); SBCA: [sbccomponents.com](http://sbccomponents.com); ICC: [iccsafe.org](http://iccsafe.org); AWC: [awc.org](http://awc.org)

**ALPINE**  
AN ITW COMPANY  
155 Harlem Ave  
North Building, 4th Floor  
Glenview, IL 60025



Loading Criteria (psf)	Wind Criteria	Snow Criteria (Pg,Pf in PSF)	Defl/CSI Criteria	▲ Maximum Reactions (lbs), or *=PLF						
				Gravity			Non-Gravity			
TCLL: 20.00	Wind Std: ASCE 7-22	Pg: NA Ct: NA CAT: NA	PP Deflection in loc L/defl L/#	Loc	R+	/ R-	/ Rh	/ Rw	/ U	/ RL
TCDL: 10.00	Speed: 130 mph	Pf: NA Ce: NA	VERT(LL): 0.098 AG 999 360	AR	2151	/-	/-	/795	/85	/265
BCLL: 0.00	Enclosure: Closed	Lu: NA Cs: NA	VERT(CL): 0.282 AG 999 240	V*	429	/-	/-	/192	/19	/-
BCDL: 10.00	Risk Category: II	Snow Duration: NA	HORZ(LL): 0.030 AB - -	Z	/-503					
Des Ld: 40.00	EXP: C Kzt: NA	Building Code: FBC 8th Ed. 2023 Res. TPI Std: 2014 Rep Fac: No FT/RT:20(0)/10(0) Plate Type(s): WAVE	HORZ(TL): 0.087 AB - -	Wind reactions based on MWFRS						
NCBCLL: 10.00	Mean Height: 15.00 ft		Creep Factor: 2.0	AR Brg Wid = 3.5 Min Req = 2.5 (Truss)						
Soffit: 2.00	TCDL: 5.0 psf		Max TC CSI: 0.844	V Brg Wid = 99.5 Min Req = -						
Load Duration: 1.25	BCDL: 5.0 psf		Max BC CSI: 0.887	Bearings AR & AB are a rigid surface.						
Spacing: 24.0 "	MWFRS Parallel Dist: 0 to h/2		Max Web CSI: 0.989	Members not listed have forces less than 375#						
	C&C Dist a: 4.20 ft			<b>Maximum Top Chord Forces Per Ply (lbs)</b>						
	Loc. from endwall: not in 10.00 ft			Chords Tens.Comp. Chords Tens. Comp.						
	GCpi: 0.18									
	Wind Duration: 1.60		VIEW Ver: 23.02.04.0123.14							

**Lumber**  
Top chord: 2x4 SP #2; T2 2x4 SP M-31;  
Bot chord: 2x4 SP #2;  
Webs: 2x4 SP #3; W12 2x4 SP #2;  
Stack Chord: SC1 2x4 SP #2;

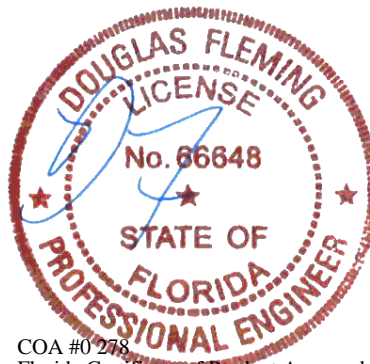
**Plating Notes**  
All plates are 2X4 except as noted.

**Loading**  
Truss designed to support 1-0-0 top chord outlookers and cladding load not to exceed 7.00 PSF one face and 24.0" span opposite face. Top chord must not be cut or notched, unless specified otherwise.  
Truss passed check for 20 psf additional bottom chord live load in areas with 42"-high x 24"-wide clearance.

**Purlins**  
In lieu of structural panels use purlins to brace all sloping TC @ 24" oc; all flat TC @ 0" oc.

**Wind**  
Wind loads based on MWFRS with additional C&C member design.  
Left end vertical not exposed to wind pressure.  
Wind loading based on both gable and hip roof types.  
Gable meets L/120 deflection criteria for wind load applied to face. Calculated deflection ratio is L/194.

**Additional Notes**  
Exposed portion of gable face shall be reinforced with sheathing and the wind pressures shall be transferred into lateral diaphragms. Connections and designs for diaphragms is the responsibility of the Building Designer in accordance with ANSI/TPI 1.  
Stacked top chord must NOT be notched or cut in area (NNL). Dropped top chord braced at 24" oc intervals. Attach stacked top chord (SC) to dropped top chord in notched area using 3x4 tie-plates 24" oc. Center plate on stacked/dropped chord interface, plate length perpendicular to chord length. Splice top chord in notched area using 3x6.  
The overall height of this truss excluding overhang is 9'-3".



COA #0278  
Florida Certificate of Product Approval #FL1999  
10/14/2024

Maximum Bot Chord Forces Per Ply (lbs)					
Chords	Tens.Comp.	Chords	Tens. Comp.		
AQ-AP	2025 -82	AJ-AH	1064	0	
AP-AO	2658 -26	AH-AB	1067	0	
AO-AN	2658 -26	AB-Z	114	-426	
AN-AJ	2069 0	Z-V	113	-413	

Maximum Web Forces Per Ply (lbs)					
Webs	Tens.Comp.	Webs	Tens. Comp.		
A-AR	191 -2127	C-AN	237	-694	
A-AQ	2405 -194	F-AJ	66	-738	
AQ-B	166 -1377	AJ-N	1058	0	
B-AP	878 -65	N-AB	93	-3347	
AP-C	104 -586	AB-R	97	-589	

Maximum Gable Forces Per Ply (lbs)			
Gables	Tens.Comp.		
R-Z	513 -54		

**\*\*WARNING\*\*** READ AND FOLLOW ALL NOTES ON THIS DRAWING!  
**\*\*IMPORTANT\*\*** FURNISH THIS DRAWING TO ALL CONTRACTORS INCLUDING THE INSTALLERS  
Trusses require extreme care in fabricating, handling, shipping, installing and bracing. Refer to and follow the latest edition of BCSI (Building Component Safety Information, by TPI and SBCA) for safety practices prior to performing these functions. Installers shall provide temporary bracing per BCSI. Unless noted otherwise, top chord shall have properly attached structural sheathing and bottom chord shall have a properly attached rigid ceiling. Locations shown for permanent lateral restraint of webs shall have continuous lateral restraint (CLR), installed with diagonal bracing installed on the CLR per BCSI sections B3, B7, or B10, as applicable. Apply plates to each face of truss and position as shown above and on the Joint Details, unless noted otherwise. Refer to drawings 160A-Z for standard plate positions. Refer to job's General Notes page for additional information.  
Alpine, a division of ITW Building Components Group Inc. shall not be responsible for any deviation from this drawing, any failure to build the truss in conformance with ANSI/TPI 1, or for handling, shipping, installation and bracing of trusses. A seal on this drawing or cover page listing this drawing, indicates acceptance of professional engineering responsibility solely for the design shown. The suitability and use of this drawing for any structure is the responsibility of the Building Designer per ANSI/TPI 1 Sec.2.  
For more information see these web sites: Alpine: [alpineitw.com](http://alpineitw.com); TPI: [tpinst.org](http://tpinst.org); SBCA: [sbcacomponents.com](http://sbcacomponents.com); ICC: [iccsafe.org](http://iccsafe.org); AWC: [awc.org](http://awc.org)

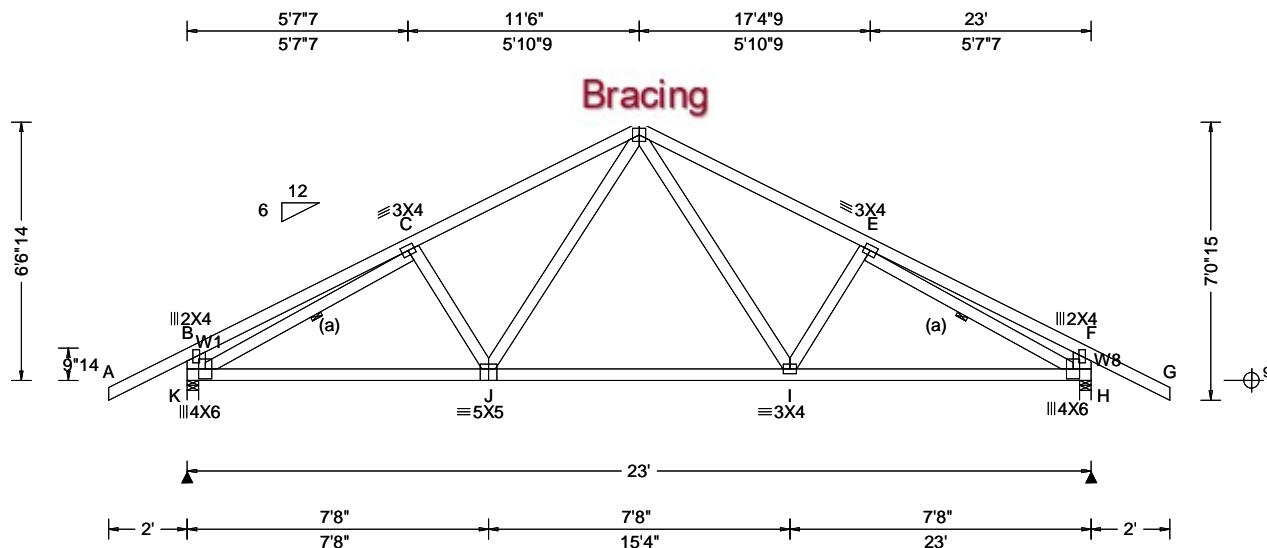


SEQN: 645521	GABL	Ply: 1	Job Number: 24-1859	Cust: R 215 JRef: 1Y432150001 T14
FROM: RFG		Qty: 1	Parsons	DrwNo: 288.24.0817.06543
Page 2 of 2			Truss Label: C1E	KD / DF 10/14/2024

<p><b>Gable Reinforcement</b></p> <p>(a) 2x4 "L" reinforcement. Any species and grade. 80% length of web member. Attach with 10d (0.131"x3",min.) nails @ 2" oc at each end for the first 18" and then 4" oc for the remainder.</p> <p>(b) 2x6 "L" reinforcement. Any species and grade. 80% length of web member. Attach with 10d (0.131"x3",min.) nails @ 2" oc at each end for the first 18" and then 4" oc for the remainder.</p> <p>(c) 1x4 "L" reinforcement. Any species and grade. 80% length of web member. Attach with 10d (0.131"x3",min.) nails @ 2" oc at each end for the first 18" and then 4" oc for the remainder.</p> <p>(d) 2x4 "T" reinforcement. Any species and grade. Full truss height along web member. Attach to the wide face with 10d (0.131"x3",min.) nails @ 4" oc in the web plus (2)10d (0.131"x3",min.) nails in each chord.</p> <p>(e) 2x3 "T" reinforcement. Any species and grade. Full truss height along web member. Attach to the wide face with 10d (0.131"x3",min.) nails @ 4" oc in the web plus (2)10d (0.131"x3",min.) nails in each chord.</p>	<div data-bbox="695 1415 1065 1772" data-label="Image"> </div> <div data-bbox="703 1745 1136 1803" data-label="Text"> <p>COA #0 278  Florida Certificate of Product Approval #FL1999  10/14/2024</p> </div>
---	---

<p><b>**WARNING**</b> READ AND FOLLOW ALL NOTES ON THIS DRAWING!</p> <p><b>**IMPORTANT**</b> FURNISH THIS DRAWING TO ALL CONTRACTORS INCLUDING THE INSTALLERS</p> <p>Trusses require extreme care in fabricating, handling, shipping, installing and bracing. Refer to and follow the latest edition of BCSI (Building Component Safety Information, by TPI and SBCA) for safety practices prior to performing these functions. Installers shall provide temporary bracing per BCSI. Unless noted otherwise, top chord shall have properly attached structural sheathing and bottom chord shall have a properly attached rigid ceiling. Locations shown for permanent lateral restraint of webs shall have continuous lateral restraint (CLR), installed with diagonal bracing installed on the CLR per BCSI sections B3, B7, or B10, as applicable. Apply plates to each face of truss and position as shown above and on the Joint Details, unless noted otherwise. Refer to drawings 160A-Z for standard plate positions. Refer to job's General Notes page for additional information.</p> <p>Alpine, a division of ITW Building Components Group Inc. shall not be responsible for any deviation from this drawing, any failure to build the truss in conformance with ANSI/TPI 1, or for handling, shipping, installation and bracing of trusses. A seal on this drawing or cover page listing this drawing, indicates acceptance of professional engineering responsibility solely for the design shown. The suitability and use of this drawing for any structure is the responsibility of the Building Designer per ANSI/TPI 1 Sec.2.</p> <p>For more information see these web sites: Alpine: <a href="http://alpineitw.com">alpineitw.com</a>; TPI: <a href="http://tpinst.org">tpinst.org</a>; SBCA: <a href="http://sbcacomponents.com">sbcacomponents.com</a>; ICC: <a href="http://iccsafe.org">iccsafe.org</a>; AWC: <a href="http://awc.org">awc.org</a></p>	<div data-bbox="1341 1881 1544 2024" data-label="Image"> </div>
---	---

SEQN: 645492 FROM: RFG	COMN Ply: 1 Qty: 6	Job Number: 24-1859 Parsons Truss Label: D1	Cust: R 215 JRRef: 1Y432150001 T5 DrwNo: 288.24.0817.09523 KD / DF 10/14/2024
---------------------------	--------------------------	---	---



Loading Criteria (psf)	Wind Criteria	Snow Criteria (Pg, Pf in PSF)	Defl/CSI Criteria	▲ Maximum Reactions (lbs)
TCLL: 20.00 TCDL: 10.00 BCLL: 0.00 BCDL: 10.00 Des Ld: 40.00 NCBCLL: 10.00 Soffit: 2.00 Load Duration: 1.25 Spacing: 24.0 "	Wind Std: ASCE 7-22 Speed: 130 mph Enclosure: Closed Risk Category: II EXP: C Kzt: NA Mean Height: 15.00 ft TCDL: 5.0 psf BCDL: 5.0 psf MWFRS Parallel Dist: 0 to h/2 C&C Dist a: 3.00 ft Loc. from endwall: Any GCpi: 0.18 Wind Duration: 1.60	Pg: NA Ct: NA CAT: NA Pf: NA Ce: NA Lu: NA Cs: NA Snow Duration: NA Building Code: FBC 8th Ed. 2023 Res. TPI Std: 2014 Rep Fac: Yes FT/RT: 20(0)/10(0) Plate Type(s): WAVE	PP Deflection in loc L/defl L/# VERT(LL): 0.052 I 999 360 VERT(CL): 0.099 I 999 240 HORZ(LL): 0.027 F - - HORZ(TL): 0.052 F - - Creep Factor: 2.0 Max TC CSI: 0.344 Max BC CSI: 0.623 Max Web CSI: 0.343 VIEW Ver: 23.02.04.0123.14	Gravity Loc R+ / R- / Rh / Rw / U / RL K 1137 - / - / /655 /197 /199 H 1137 - / - / /655 /197 - Wind reactions based on MWFRS K Brg Wid = 3.5 Min Req = 1.5 (Truss) H Brg Wid = 3.5 Min Req = 1.5 (Truss) Bearings K & H are a rigid surface. Members not listed have forces less than 375# Maximum Top Chord Forces Per Ply (lbs) Chords Tens.Comp. Chords Tens. Comp. C - D 594 - 1420 D - E 593 - 1421

#### Lumber

Top chord: 2x4 SP #2;  
Bot chord: 2x4 SP #2;  
Webs: 2x4 SP #3; W1, W8 2x6 SP #2;

#### Bracing

(a) Continuous lateral restraint equally spaced on member.

#### Loading

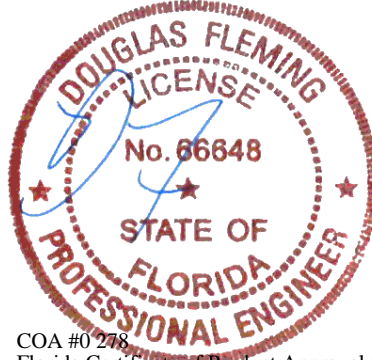
Truss passed check for 20 psf additional bottom chord live load in areas with 42"-high x 24"-wide clearance.

#### Wind

Wind loads based on MWFRS with additional C&C member design.  
End verticals not exposed to wind pressure.  
Wind loading based on both gable and hip roof types.

#### Additional Notes

The overall height of this truss excluding overhang is 6-6-14.



COA #0 278  
Florida Certificate of Product Approval #FL1999  
10/14/2024

#### Maximum Bot Chord Forces Per Ply (lbs)

Chords	Tens.Comp.	Chords	Tens. Comp.
K - J	1318 -372	I - H	1319 -383
J - I	946 -160		

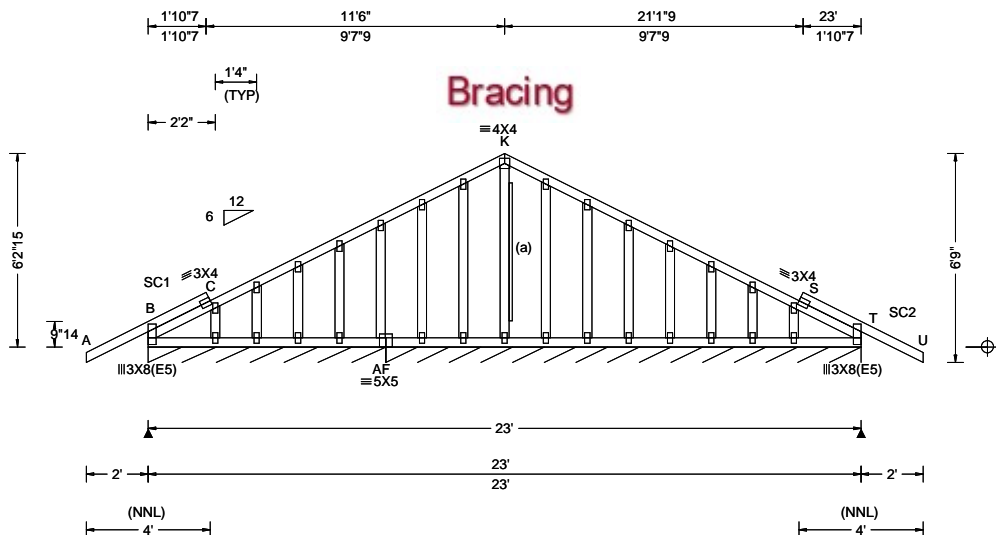
#### Maximum Web Forces Per Ply (lbs)

Webs	Tens.Comp.	Webs	Tens. Comp.
B - K	295 -404	D - I	483 -159
K - C	447 -1312	E - H	445 -1316
J - D	481 -160	F - H	296 -403

**\*\*WARNING\*\*** READ AND FOLLOW ALL NOTES ON THIS DRAWING!  
**\*\*IMPORTANT\*\*** FURNISH THIS DRAWING TO ALL CONTRACTORS INCLUDING THE INSTALLERS  
Trusses require extreme care in fabricating, handling, shipping, installing and bracing. Refer to and follow the latest edition of BCSI (Building Component Safety Information, by TPI and SBCA) for safety practices prior to performing these functions. Installers shall provide temporary bracing per BCSI. Unless noted otherwise, top chord shall have properly attached structural sheathing and bottom chord shall have a properly attached rigid ceiling. Locations shown for permanent lateral restraint of webs shall have continuous lateral restraint (CLR), installed with diagonal bracing installed on the CLR per BCSI sections B3, B7, or B10, as applicable. Apply plates to each face of truss and position as shown above and on the Joint Details, unless noted otherwise. Refer to drawings 160A-Z for standard plate positions. Refer to job's General Notes page for additional information.  
Alpine, a division of ITW Building Components Group Inc. shall not be responsible for any deviation from this drawing, any failure to build the truss in conformance with ANSI/TPI 1, or for handling, shipping, installation and bracing of trusses. A seal on this drawing or cover page listing this drawing, indicates acceptance of professional engineering responsibility solely for the design shown. The suitability and use of this drawing for any structure is the responsibility of the Building Designer per ANSI/TPI 1 Sec.2.  
For more information see these web sites: Alpine: [alpineitw.com](http://alpineitw.com); TPI: [tpinst.org](http://tpinst.org); SBCA: [sbcacomponents.com](http://sbcacomponents.com); ICC: [iccsafe.org](http://iccsafe.org); AWC: [awc.org](http://awc.org)

**ALPINE**  
AN ITW COMPANY  
155 Harlem Ave  
North Building, 4th Floor  
Glenview, IL 60025

SEQN: 645496 FROM: RFG	GABL Ply: 1 Qty: 1	Job Number: 24-1859 Parsons Truss Label: D1E	Cust: R 215 JRef: 1Y432150001 T12 DrwNo: 288.24.0817.12337 KD / DF 10/14/2024
---------------------------	--------------------------	--	---



Loading Criteria (psf)	Wind Criteria	Snow Criteria (Pg, Pf in PSF)	Defl/CSI Criteria	▲ Maximum Reactions (lbs), or *=PLF
TCLL: 20.00 TCDL: 10.00 BCLL: 0.00 BCDL: 10.00 Des Ld: 40.00 NCBCLL: 10.00 Soffit: 2.00 Load Duration: 1.25 Spacing: 24.0 "	Wind Std: ASCE 7-22 Speed: 130 mph Enclosure: Closed Risk Category: II EXP: C Kzt: NA Mean Height: 15.00 ft TCDL: 5.0 psf BCDL: 5.0 psf MWFRS Parallel Dist: 0 to h/2 C&C Dist a: 3.00 ft Loc. from endwall: Any GCpi: 0.18 Wind Duration: 1.60	Pg: NA Ct: NA CAT: NA Pf: NA Ce: NA Lu: NA Cs: NA Snow Duration: NA Building Code: FBC 8th Ed. 2023 Res. TPI Std: 2014 Rep Fac: No FT/RT:20(0)/10(0) Plate Type(s): WAVE	PP Deflection in loc L/def L/# VERT(LL): 0.001 K 999 360 VERT(CL): 0.002 J 999 240 HORZ(LL): 0.003 N - - HORZ(TL): 0.004 N - - Creep Factor: 2.0 Max TC CSI: 0.427 Max BC CSI: 0.032 Max Web CSI: 0.829 VIEW Ver: 23.02.04.0123.14	Gravity Loc R+ / R- / Rh / Rw / U / RL Non-Gravity B* 131 /- /- /76 /29 /29 AF* 120 /- /- /58 /16 /- Wind reactions based on MWFRS B Brg Wid = 92.0 Min Req = - AF Brg Wid = 184 Min Req = - Bearings B & AF are a rigid surface. Members not listed have forces less than 375#

#### Lumber

Top chord: 2x4 SP #2;  
Bot chord: 2x4 SP #2;  
Webs: 2x4 SP #3;  
Stack Chord: SC1 2x4 SP #2;  
Stack Chord: SC2 2x4 SP #2;

#### Plating Notes

All plates are 2X4 except as noted.

#### Loading

Truss designed to support 1-0-0 top chord outlookers and cladding load not to exceed 7.00 PSF one face and 24.0" span opposite face. Top chord must not be cut or notched, unless specified otherwise.

#### Purlins

In lieu of structural panels use purlins to brace TC @ 24" oc.

#### Wind

Wind loads based on MWFRS with additional C&C member design.

End verticals not exposed to wind pressure.

Wind loading based on both gable and hip roof types.

Gable meets L/120 deflection criteria for wind load applied to face. Calculated deflection ratio is L/234.

#### Gable Reinforcement

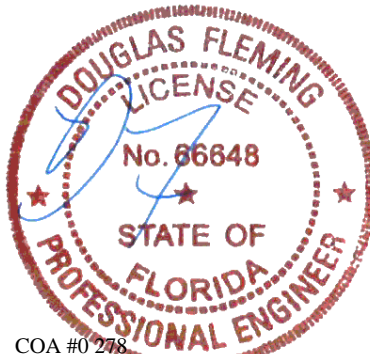
(a) 1x4 "L" reinforcement. Any species and grade. 80% length of web member. Attach with 10d (0.131"x3", min.) nails @ 2" oc at each end for the first 18" and then 4" oc for the remainder.

#### Additional Notes

Exposed portion of gable face shall be reinforced with sheathing and the wind pressures shall be transferred into lateral diaphragms. Connections and designs for diaphragms is the responsibility of the Building Designer in accordance with ANSI/TPI 1.

Stacked top chord must NOT be notched or cut in area (NNL). Dropped top chord braced at 24" oc intervals. Attach stacked top chord (SC) to dropped top chord in notched area using 3x4 tie-plates 24" oc. Center plate on stacked/dropped chord interface, plate length perpendicular to chord length. Splice top chord in notched area using 3x6.

The overall height of this truss excluding overhang is 6-2-15.

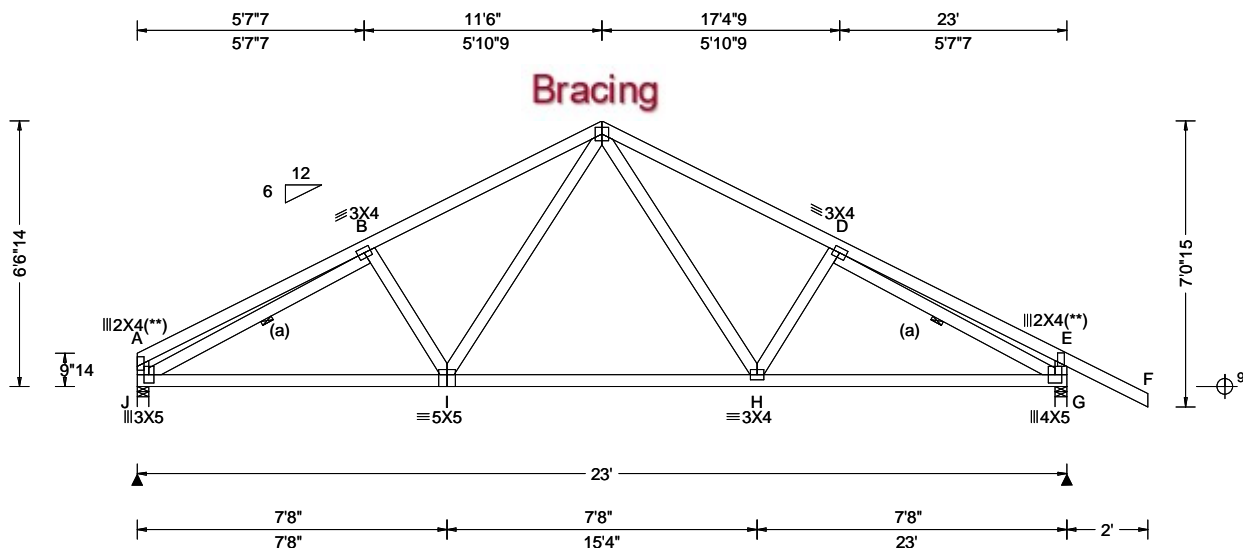


COA #0 278  
Florida Certificate of Product Approval #FL1999  
10/14/2024

**\*\*WARNING\*\* READ AND FOLLOW ALL NOTES ON THIS DRAWING!**  
**\*\*IMPORTANT\*\* FURNISH THIS DRAWING TO ALL CONTRACTORS INCLUDING THE INSTALLERS**  
Trusses require extreme care in fabricating, handling, shipping, installing and bracing. Refer to and follow the latest edition of BCSI (Building Component Safety Information, by TPI and SBCA) for safety practices prior to performing these functions. Installers shall provide temporary bracing per BCSI. Unless noted otherwise, top chord shall have properly attached structural sheathing and bottom chord shall have a properly attached rigid ceiling. Locations shown for permanent lateral restraint of webs shall have continuous lateral restraint (CLR), installed with diagonal bracing installed on the CLR per BCSI sections B3, B7, or B10, as applicable. Apply plates to each face of truss and position as shown above and on the Joint Details, unless noted otherwise. Refer to drawings 160A-Z for standard plate positions. Refer to job's General Notes page for additional information.  
Alpine, a division of ITW Building Components Group Inc. shall not be responsible for any deviation from this drawing, any failure to build the truss in conformance with ANSI/TPI 1, or for handling, shipping, installation and bracing of trusses. A seal on this drawing or cover page listing this drawing, indicates acceptance of professional engineering responsibility solely for the design shown. The suitability and use of this drawing for any structure is the responsibility of the Building Designer per ANSI/TPI 1 Sec.2.  
For more information see these web sites: Alpine: [alpineitw.com](http://alpineitw.com); TPI: [tpinst.org](http://tpinst.org); SBCA: [sbcacomponents.com](http://sbcacomponents.com); ICC: [iccsafe.org](http://iccsafe.org); AWC: [awc.org](http://awc.org)

**ALPINE**  
AN ITW COMPANY  
155 Harlem Ave  
North Building, 4th Floor  
Glenview, IL 60025

SEQN: 645498 FROM: RFG	COMN Ply: 1 Qty: 6	Job Number: 24-1859 Parsons Truss Label: D2	Cust: R 215 JRef: 1Y432150001 T7 DrwNo: 288.24.0817.14053 KD / DF 10/14/2024
---------------------------	--------------------------	---	--



Loading Criteria (psf)	Wind Criteria	Snow Criteria (Pg, Pf in PSF)	Defl/CSI Criteria	Maximum Reactions (lbs)
TCLL: 20.00 TCDL: 10.00 BCLL: 0.00 BCDL: 10.00 Des Ld: 40.00 NCBCLL: 10.00 Soffit: 2.00 Load Duration: 1.25 Spacing: 24.0 "	Wind Std: ASCE 7-22 Speed: 130 mph Enclosure: Closed Risk Category: II EXP: C Kzt: NA Mean Height: 15.00 ft TCDL: 5.0 psf BCDL: 5.0 psf MWFRS Parallel Dist: h to 2h C&C Dist a: 3.00 ft Loc. from endwall: not in 9.00 ft GCp: 0.18 Wind Duration: 1.60	Pg: NA Ct: NA CAT: NA Pf: NA Ce: NA Lu: NA Cs: NA Snow Duration: NA Building Code: FBC 8th Ed. 2023 Res. TPI Std: 2014 Rep Fac: Yes FT/RT: 20(0)/10(0) Plate Type(s): WAVE	PP Deflection in loc L/defl L/# VERT(LL): 0.054 I 999 360 VERT(CL): 0.104 I 999 240 HORZ(LL): 0.029 E - - HORZ(TL): 0.055 E - - Creep Factor: 2.0 Max TC CSI: 0.380 Max BC CSI: 0.662 Max Web CSI: 0.387 VIEW Ver: 23.02.04.0123.14	Gravity Loc R+ / R- / Rh / Rw / U / RL J 998 - / - / 542 / 16 / 180 G 1143 - / - / 655 / 30 / - Wind reactions based on MWFRS J Brg Wid = 3.5 Min Req = 1.5 (Truss) G Brg Wid = 3.5 Min Req = 1.5 (Truss) Bearings J & G are a rigid surface. Members not listed have forces less than 375# Maximum Top Chord Forces Per Ply (lbs) Chords Tens.Comp. Chords Tens. Comp. B - C 394 - 1452 C - D 381 - 1436

#### Lumber

Top chord: 2x4 SP #2;  
Bot chord: 2x4 SP #2;  
Webs: 2x4 SP #3;

#### Bracing

(a) Continuous lateral restraint equally spaced on member.

#### Plating Notes

(\*\*) 2 plate(s) require special positioning. Refer to scaled plate plot details for special positioning requirements.

#### Loading

Truss passed check for 20 psf additional bottom chord live load in areas with 42"-high x 24"-wide clearance.

#### Wind

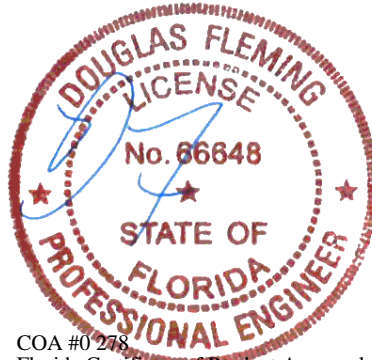
Wind loads based on MWFRS with additional C&C member design.

End verticals not exposed to wind pressure.

Wind loading based on both gable and hip roof types.

#### Additional Notes

The overall height of this truss excluding overhang is 6-6-14.



COA #0 278  
Florida Certificate of Product Approval #FL1999  
10/14/2024

#### Maximum Bot Chord Forces Per Ply (lbs)

Chords	Tens.Comp.	Chords	Tens. Comp.
J - I	1357 -231	H - G	1329 -225
I - H	956 -77		

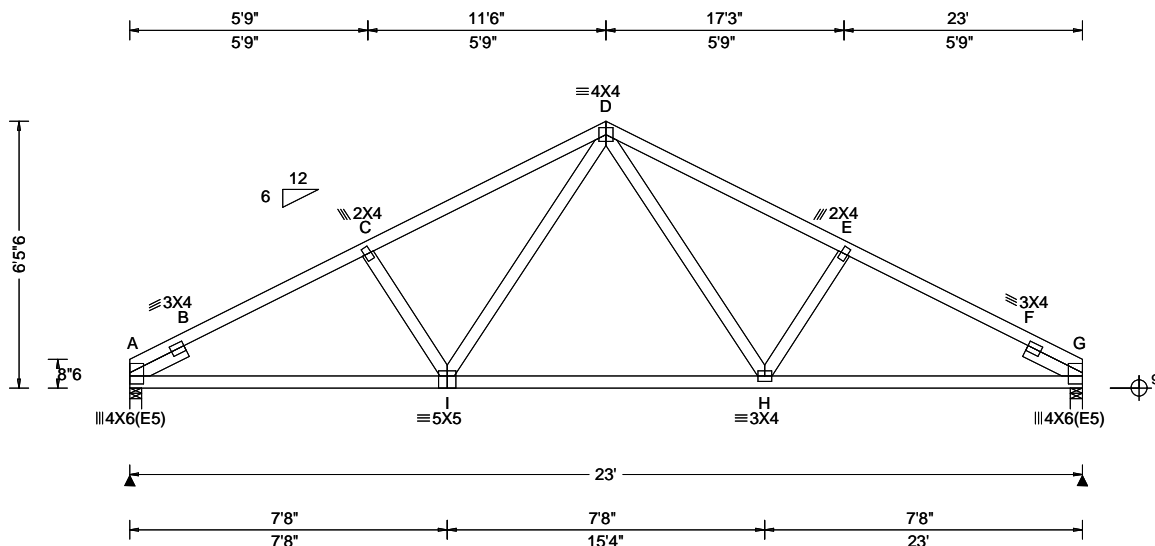
#### Maximum Web Forces Per Ply (lbs)

Webs	Tens.Comp.	Webs	Tens. Comp.
J - B	301 -1433	C - H	486 -88
I - C	511 -99	D - G	269 -1450

**\*\*WARNING\*\* READ AND FOLLOW ALL NOTES ON THIS DRAWING!**  
**\*\*IMPORTANT\*\* FURNISH THIS DRAWING TO ALL CONTRACTORS INCLUDING THE INSTALLERS**  
Trusses require extreme care in fabricating, handling, shipping, installing and bracing. Refer to and follow the latest edition of BCSI (Building Component Safety Information, by TPI and SBCA) for safety practices prior to performing these functions. Installers shall provide temporary bracing per BCSI. Unless noted otherwise, top chord shall have properly attached structural sheathing and bottom chord shall have a properly attached rigid ceiling. Locations shown for permanent lateral restraint of webs shall have continuous lateral restraint (CLR), installed with diagonal bracing installed on the CLR per BCSI sections B3, B7, or B10, as applicable. Apply plates to each face of truss and position as shown above and on the Joint Details, unless noted otherwise. Refer to drawings 160A-Z for standard plate positions. Refer to job's General Notes page for additional information.  
Alpine, a division of ITW Building Components Group Inc. shall not be responsible for any deviation from this drawing, any failure to build the truss in conformance with ANSI/TPI 1, or for handling, shipping, installation and bracing of trusses. A seal on this drawing or cover page listing this drawing, indicates acceptance of professional engineering responsibility solely for the design shown. The suitability and use of this drawing for any structure is the responsibility of the Building Designer per ANSI/TPI 1 Sec.2.  
For more information see these web sites: Alpine: [alpineitw.com](http://alpineitw.com); TPI: [tpinst.org](http://tpinst.org); SBCA: [sbcacomponents.com](http://sbcacomponents.com); ICC: [iccsafe.org](http://iccsafe.org); AWC: [awc.org](http://awc.org)

**ALPINE**  
AN ITW COMPANY  
155 Harlem Ave  
North Building, 4th Floor  
Glenview, IL 60025

SEQN: 645401 FROM: RFG	COMN	Ply: 1 Qty: 2	Job Number: 24-1859 Parsons Truss Label: D3	Cust: R 215 JRRef: 1Y432150001 T8 DrwNo: 288.24.0817.16140 KD / DF 10/14/2024
---------------------------	------	------------------	---	---



Loading Criteria (psf)	Wind Criteria	Snow Criteria (Pg, Pf in PSF)	Defl/CSI Criteria	▲ Maximum Reactions (lbs)
TCLL: 20.00 TCDL: 10.00 BCLL: 0.00 BCDL: 10.00 Des Ld: 40.00 NCBCLL: 10.00 Soffit: 2.00 Load Duration: 1.25 Spacing: 24.0 "	Wind Std: ASCE 7-22 Speed: 130 mph Enclosure: Closed Risk Category: II EXP: C Kzt: NA Mean Height: 15.00 ft TCDL: 5.0 psf BCDL: 5.0 psf MWFRS Parallel Dist: h to 2h C&C Dist a: 3.00 ft Loc. from endwall: not in 9.00 ft GCpi: 0.18 Wind Duration: 1.60	Pg: NA Ct: NA CAT: NA Pf: NA Ce: NA Lu: NA Cs: NA Snow Duration: NA Building Code: FBC 8th Ed. 2023 Res. TPI Std: 2014 Rep Fac: Yes FT/RT: 20(0)/10(0) Plate Type(s): WAVE	PP Deflection in loc L/def L/# VERT(LL): 0.054 H 999 360 VERT(CL): 0.105 H 999 240 HORZ(LL): 0.023 G - - HORZ(TL): 0.044 G - - Creep Factor: 2.0 Max TC CSI: 0.471 Max BC CSI: 0.727 Max Web CSI: 0.246 VIEW Ver: 23.02.04.0123.14	Gravity Loc R+ / R- / Rh / Rw / U / RL A 1001 - / - /544 /16 /148 G 1001 - / - /544 /16 - Wind reactions based on MWFRS A Brg Wid = 3.5 Min Req = 1.5 (Truss) G Brg Wid = 3.5 Min Req = 1.5 (Truss) Bearings A & G are a rigid surface. Members not listed have forces less than 375# Maximum Top Chord Forces Per Ply (lbs) Chords Tens.Comp. Chords Tens. Comp. A - B 472 - 1867 D - E 407 - 1501 B - C 393 - 1650 E - F 391 - 1651 C - D 408 - 1499 F - G 470 - 1867

#### Lumber

Top chord: 2x4 SP #2;  
Bot chord: 2x4 SP #2;  
Webs: 2x4 SP #3;  
Lt Slider: 2x4 SP #3; block length = 1.500'  
Rt Slider: 2x4 SP #3; block length = 1.500'

#### Loading

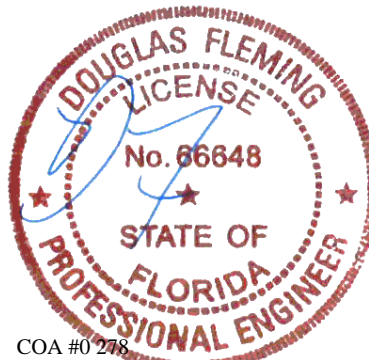
Truss passed check for 20 psf additional bottom chord live load in areas with 42"-high x 24"-wide clearance.

#### Wind

Wind loads based on MWFRS with additional C&C member design.  
Wind loading based on both gable and hip roof types.

#### Additional Notes

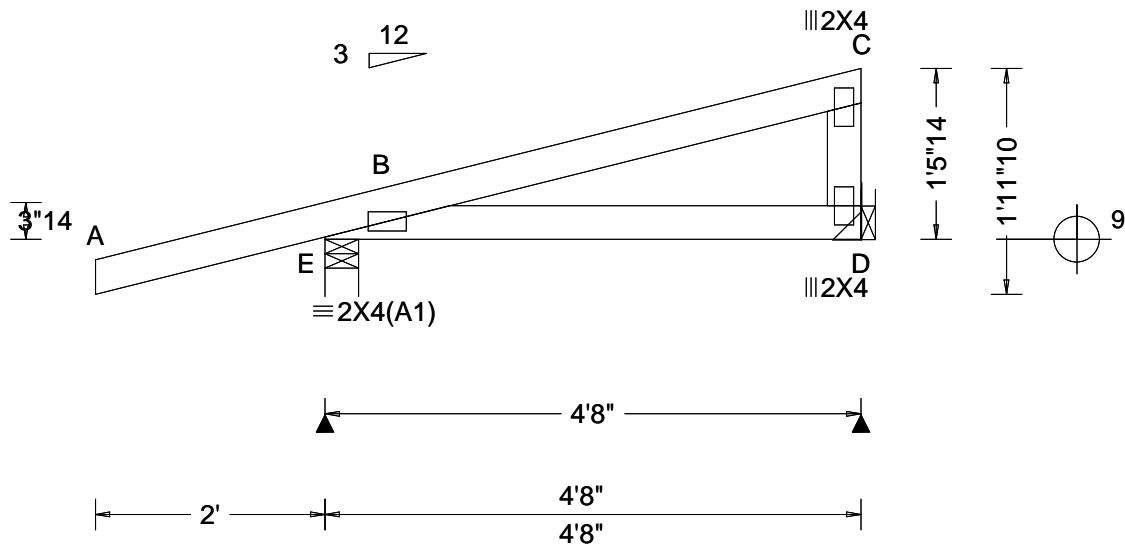
The overall height of this truss excluding overhang is 6'-5.6".



COA #0 278  
Florida Certificate of Product Approval #FL1999  
10/14/2024

**\*\*WARNING\*\*** READ AND FOLLOW ALL NOTES ON THIS DRAWING!  
**\*\*IMPORTANT\*\*** FURNISH THIS DRAWING TO ALL CONTRACTORS INCLUDING THE INSTALLERS  
Trusses require extreme care in fabricating, handling, shipping, installing and bracing. Refer to and follow the latest edition of BCSI (Building Component Safety Information, by TPI and SBCA) for safety practices prior to performing these functions. Installers shall provide temporary bracing per BCSI. Unless noted otherwise, top chord shall have properly attached structural sheathing and bottom chord shall have a properly attached rigid ceiling. Locations shown for permanent lateral restraint of webs shall have continuous lateral restraint (CLR), installed with diagonal bracing installed on the CLR per BCSI sections B3, B7, or B10, as applicable. Apply plates to each face of truss and position as shown above and on the Joint Details, unless noted otherwise. Refer to drawings 160A-Z for standard plate positions. Refer to job's General Notes page for additional information.  
Alpine, a division of ITW Building Components Group Inc. shall not be responsible for any deviation from this drawing, any failure to build the truss in conformance with ANSI/TPI 1, or for handling, shipping, installation and bracing of trusses. A seal on this drawing or cover page listing this drawing, indicates acceptance of professional engineering responsibility solely for the design shown. The suitability and use of this drawing for any structure is the responsibility of the Building Designer per ANSI/TPI 1 Sec.2.  
For more information see these web sites: Alpine: [alpineitw.com](http://alpineitw.com); TPI: [tpinst.org](http://tpinst.org); SBCA: [sbcacomponents.com](http://sbcacomponents.com); ICC: [iccsafe.org](http://iccsafe.org); AWC: [awc.org](http://awc.org)

**ALPINE**  
AN ITW COMPANY  
155 Harlem Ave  
North Building, 4th Floor  
Glenview, IL 60025



Loading Criteria (psf)	Wind Criteria	Snow Criteria (Pg,Pf in PSF)	Defl/CSI Criteria	▲ Maximum Reactions (lbs)
TCLL: 20.00	Wind Std: ASCE 7-22	Pg: NA Ct: NA CAT: NA	PP Deflection in loc L/defl L/#	Gravity Non-Gravity
TCDL: 10.00	Speed: 130 mph	Pf: NA Ce: NA	VERT(LL): NA	Loc R+ / R- / Rh / Rw / U / RL
BCLL: 0.00	Enclosure: Closed	Lu: NA Cs: NA	VERT(CL): NA	E 356 /- /- /202 /116 /60
BCDL: 10.00	Risk Category: II	Snow Duration: NA	HORZ(LL): 0.002 B - -	D 149 /- /- /87 /30 /-
Des Ld: 40.00	EXP: C Kzt: NA		HORZ(TL): 0.005 B - -	Wind reactions based on MWFRS
NCBCLL: 10.00	Mean Height: 15.00 ft	Building Code:	Creep Factor: 2.0	E Brg Wid = 3.5 Min Req = 1.5 (Truss)
Soffit: 2.00	TCDL: 5.0 psf	FBC 8th Ed. 2023 Res.	Max TC CSI: 0.425	D Brg Wid = - Min Req = -
Load Duration: 1.25	BCDL: 5.0 psf	TPI Std: 2014	Max BC CSI: 0.157	Bearing E is a rigid surface.
Spacing: 24.0 "	MWFRS Parallel Dist: 0 to h/2	Rep Fac: Yes	Max Web CSI: 0.098	Members not listed have forces less than 375#
	C&C Dist a: 3.00 ft	FT/RT:20(0)/10(0)		
	Loc. from endwall: Any	Plate Type(s):		
	GCpi: 0.18			
	Wind Duration: 1.60	WAVE	VIEW Ver: 23.02.04.0123.14	

## Lumber

Top chord: 2x4 SP #2;  
Bot chord: 2x4 SP #2;  
Webs: 2x4 SP #3;

## Hangars / Ties

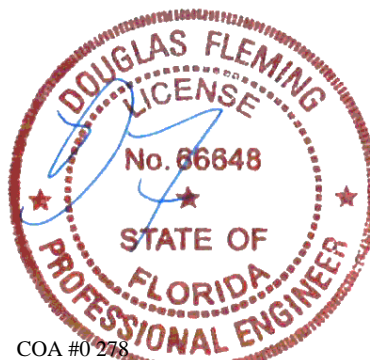
(J) Hanger Support Required, by others

### Wind

Wind loads based on MWFRS with additional C&C member design.  
Right end vertical not exposed to wind pressure.  
Wind loading based on both gable and hip roof types.

### Additional Notes

The overall height of this truss excluding overhang is 1-5-14.



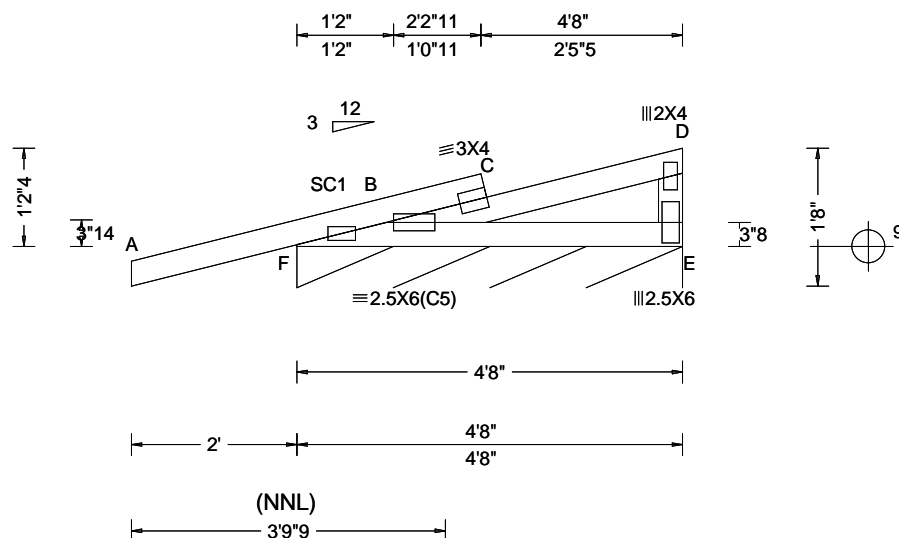
COA #0 278  
Florida Certificate of Product Approval #FL1999  
10/14/2024

**\*\*WARNING\*\*** READ AND FOLLOW ALL NOTES ON THIS DRAWING!  
**\*\*IMPORTANT\*\*** FURNISH THIS DRAWING TO ALL CONTRACTORS INCLUDING THE INSTALLERS  
 Trusses require extreme care in fabricating, handling, shipping, installing and bracing. Refer to and follow the latest edition of BCSI (Building Component Safety) Information, by TPI and SBCA for safety practices prior to performing these functions. Installers shall provide temporary bracing per BCSI unless noted otherwise. Top chord shall have properly attached structural sheathing and bottom chord shall have a properly attached rigid ceiling. Locations of permanent bracing and web restraint or webs shall be continuous lateral restraint (CLR) installed with diagonal bracing installed on the CLR per BCSI sections B3, B7, or B10, as applicable. Apply plates to each face of truss and position as shown above and on the Joint Details, unless noted otherwise. Refer to drawings 160A-Z for standard plate positions. Refer to job's General Notes page for additional information.  
 Alpine, a division of ITW Building Components Group Inc. shall not be responsible for any deviation from this drawing, any failure to build the truss in conformance with ANSI/TPI 1, or for handling, shipping, installation and bracing of trusses. A seal on this drawing or cover page listing this drawing, indicates acceptance of professional engineering responsibility solely for the design shown. The suitability and use of this drawing for any structure is the responsibility of the Building Designer per ANSI/TPI 1 Sec.2.  
 For more information see these web sites: Alpine: [alpineitw.com](http://alpineitw.com); TPI: [tpiinst.org](http://tpiinst.org); SBCA: [sbccomponents.com](http://sbccomponents.com); ICC: [iccsafe.org](http://iccsafe.org); AWC: [awc.org](http://awc.org)





SEQN: 645507 FROM: RFG	GABL Ply: 1 Qty: 2	Job Number: 24-1859 Parsons Truss Label: M1E	Cust: R 215 JRef: 1Y432150001 T17 DrwNo: 288.24.0817.20420 KD / DF 10/14/2024
---------------------------	--------------------------	--	---



Loading Criteria (psf)	Wind Criteria	Snow Criteria (Pg, Pf in PSF)	Defl/CSI Criteria	▲ Maximum Reactions (lbs), or *=PLF
TCLL: 20.00 TCDL: 10.00 BCLL: 0.00 BCDL: 10.00 Des Ld: 40.00 NCBCLL: 10.00 Soffit: 2.00 Load Duration: 1.25 Spacing: 24.0 "	Wind Std: ASCE 7-22 Speed: 130 mph Enclosure: Closed Risk Category: II EXP: C Kzt: NA Mean Height: 15.00 ft TCDL: 5.0 psf BCDL: 5.0 psf MWFRS Parallel Dist: 0 to h/2 C&C Dist a: 3.00 ft Loc. from endwall: Any GCpi: 0.18 Wind Duration: 1.60	Pg: NA Ct: NA CAT: NA Pf: NA Ce: NA Lu: NA Cs: NA Snow Duration: NA  Building Code: FBC 8th Ed. 2023 Res. TPI Std: 2014 Rep Fac: Varies by Ld Case FT/RT:20(0)/10(0) Plate Type(s): WAVE	PP Deflection in loc L/def L/# VERT(LL): 0.015 C 999 360 VERT(CL): 0.027 C 999 240 HORZ(LL): -0.002 D - - HORZ(TL): 0.005 D - - Creep Factor: 2.0 Max TC CSI: 0.478 Max BC CSI: 0.164 Max Web CSI: 0.099  VIEW Ver: 23.02.04.0123.14	Gravity Non-Gravity Loc R+ / R- / Rh / Rw / U / RL F* 121 /- /- /64 /93 /29 Wind reactions based on MWFRS F Brg Wid = 56.0 Min Req = - Bearing F is a rigid surface. Members not listed have forces less than 375#

#### Lumber

Top chord: 2x4 SP #2;  
Bot chord: 2x4 SP #2;  
Webs: 2x4 SP #3;  
Stack Chord: SC1 2x4 SP #2;

#### Plating Notes

All plates are 2X4(C5) except as noted.

#### Loading

Truss designed to support 1-0-0 top chord outlookers and cladding load not to exceed 7.00 PSF one face and 24.0" span opposite face. Top chord must not be cut or notched, unless specified otherwise.

#### Wind

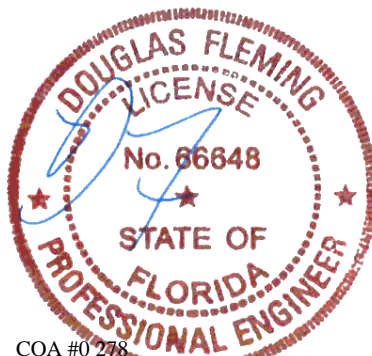
Wind loads based on MWFRS with additional C&C member design.  
Right end vertical not exposed to wind pressure.  
Wind loading based on both gable and hip roof types.

#### Additional Notes

Stacked top chord must NOT be notched or cut in area (NNL). Dropped top chord braced at 24" oc intervals. Attach stacked top chord (SC) to dropped top chord in notchable area using 3x4 tie-plates 24" oc. Center plate on stacked/dropped chord interface, plate length perpendicular to chord length. Splice top chord in notchable area using 3x6.

The overall height of this truss excluding overhang is 1-2-4.

Note: Laterally brace bottom chord above filler at 20" O.C.Max. including a lateral brace at chord ends.

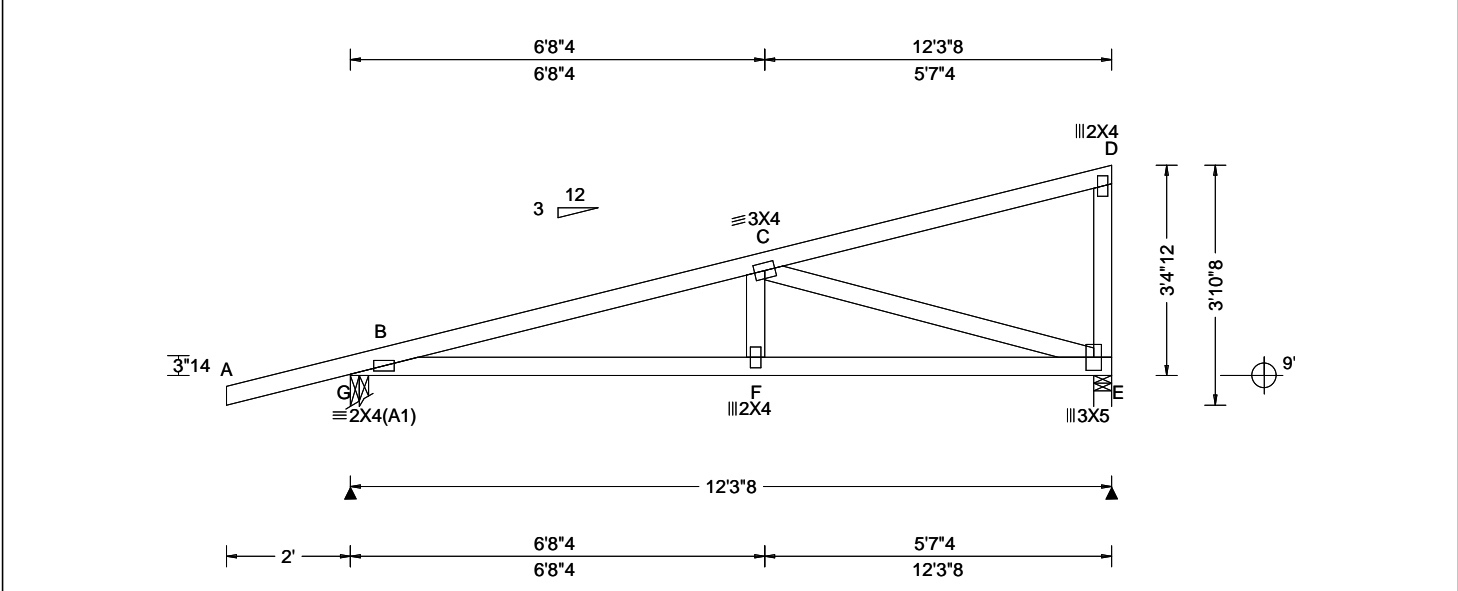


COA #0278  
Florida Certificate of Product Approval #FL1999  
10/14/2024

**\*\*WARNING\*\*** READ AND FOLLOW ALL NOTES ON THIS DRAWING!  
**\*\*IMPORTANT\*\*** FURNISH THIS DRAWING TO ALL CONTRACTORS INCLUDING THE INSTALLERS  
Trusses require extreme care in fabricating, handling, shipping, installing and bracing. Refer to and follow the latest edition of BCSI (Building Component Safety Information, by TPI and SBCA) for safety practices prior to performing these functions. Installers shall provide temporary bracing per BCSI. Unless noted otherwise, top chord shall have properly attached structural sheathing and bottom chord shall have a properly attached rigid ceiling. Locations shown for permanent lateral restraint of webs shall have continuous lateral restraint (CLR), installed with diagonal bracing installed on the CLR per BCSI sections B3, B7, or B10, as applicable. Apply plates to each face of truss and position as shown above and on the Joint Details, unless noted otherwise. Refer to drawings 160A-Z for standard plate positions. Refer to job's General Notes page for additional information.  
Alpine, a division of ITW Building Components Group Inc. shall not be responsible for any deviation from this drawing, any failure to build the truss in conformance with ANSI/TPI 1, or for handling, shipping, installation and bracing of trusses. A seal on this drawing or cover page listing this drawing, indicates acceptance of professional engineering responsibility solely for the design shown. The suitability and use of this drawing for any structure is the responsibility of the Building Designer per ANSI/TPI 1 Sec.2.  
For more information see these web sites: Alpine: [alpineitw.com](http://alpineitw.com); TPI: [tpinst.org](http://tpinst.org); SBCA: [sbcacomponents.com](http://sbcacomponents.com); ICC: [iccsafe.org](http://iccsafe.org); AWC: [awc.org](http://awc.org)

**ALPINE**  
AN ITW COMPANY  
155 Harlem Ave  
North Building, 4th Floor  
Glenview, IL 60025

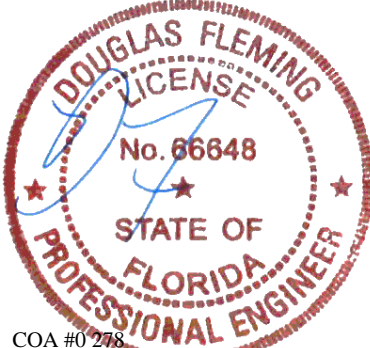
SEQN: 645484 FROM: RFG	MONO Ply: 1 Qty: 13	Job Number: 24-1859 Parsons Truss Label: M2	Cust: R 215 JRef: 1Y432150001 T11 DrwNo: 288.24.0818.03320 KD / DF 10/14/2024
---------------------------	---------------------------	---	---



Loading Criteria (psf)	Wind Criteria	Snow Criteria (Pg,Pf in PSF)	Defl/CSI Criteria	▲ Maximum Reactions (lbs)
TCLL: 20.00 TCDL: 10.00 BCLL: 0.00 BCDL: 10.00 Des Ld: 40.00 NCBCLL: 10.00 Soffit: 2.00 Load Duration: 1.25 Spacing: 24.0 "	Wind Std: ASCE 7-22 Speed: 130 mph Enclosure: Closed Risk Category: II EXP: C Kzt: NA Mean Height: 15.00 ft TCDL: 5.0 psf BCDL: 5.0 psf MWFRS Parallel Dist: h/2 to h C&C Dist a: 3.00 ft Loc. from endwall: not in 9.00 ft GCpi: 0.18 Wind Duration: 1.60	Pg: NA Ct: NA CAT: NA Pf: NA Ce: NA Lu: NA Cs: NA Snow Duration: NA  Building Code: FBC 8th Ed. 2023 Res. TPI Std: 2014 Rep Fac: Yes FT/RT:20(0)/10(0) Plate Type(s): WAVE	PP Deflection in loc L/defl L/# VERT(LL): 0.038 F 999 360 VERT(CL): 0.074 F 999 240 HORZ(LL): 0.010 E - - HORZ(TL): 0.019 E - - Creep Factor: 2.0 Max TC CSI: 0.388 Max BC CSI: 0.506 Max Web CSI: 0.666  VIEW Ver: 23.02.04.0123.14	Gravity Non-Gravity Loc R+ / R- / Rh / Rw / U / RL G 643 -/- /- /347 /135 /123 E 477 -/- /- /250 /103 -/ Wind reactions based on MWFRS G Brg Wid = 3.5 Min Req = 1.5 (Truss) E Brg Wid = 3.5 Min Req = 1.5 (Truss) Bearings G & E are a rigid surface. Members not listed have forces less than 375# <b>Maximum Top Chord Forces Per Ply (lbs)</b> Chords Tens.Comp. B - C 355 - 1059

<b>Lumber</b> Top chord: 2x4 SP #2; Bot chord: 2x4 SP #2; Webs: 2x4 SP #3;	<b>Maximum Bot Chord Forces Per Ply (lbs)</b> Chords Tens.Comp. Chords Tens. Comp. B - F 994 -458 F - E 985 -462
<b>Wind</b> Wind loads based on MWFRS with additional C&C member design. Right end vertical not exposed to wind pressure. Wind loading based on both gable and hip roof types.	<b>Maximum Web Forces Per Ply (lbs)</b> Webs Tens.Comp. C - E 477 - 1016

**Additional Notes**  
The overall height of this truss excluding overhang is 3-4-12.



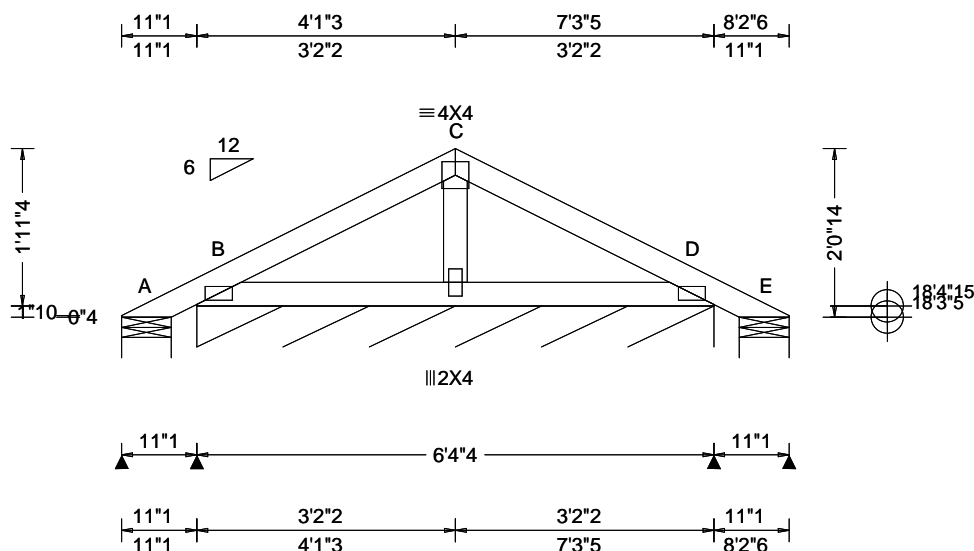
COA #0 278  
Florida Certificate of Product Approval #FL1999  
10/14/2024

**\*\*WARNING\*\*** READ AND FOLLOW ALL NOTES ON THIS DRAWING!  
**\*\*IMPORTANT\*\*** FURNISH THIS DRAWING TO ALL CONTRACTORS INCLUDING THE INSTALLERS  
Trusses require extreme care in fabricating, handling, shipping, installing and bracing. Refer to and follow the latest edition of BCSI (Building Component Safety Information, by TPI and SBCA) for safety practices prior to performing these functions. Installers shall provide temporary bracing per BCSI. Unless noted otherwise, top chord shall have properly attached structural sheathing and bottom chord shall have a properly attached rigid ceiling. Locations shown for permanent lateral restraint of webs shall have continuous lateral restraint (CLR), installed with diagonal bracing installed on the CLR per BCSI sections B3, B7, or B10, as applicable. Apply plates to each face of truss and position as shown above and on the Joint Details, unless noted otherwise. Refer to drawings 160A-Z for standard plate positions. Refer to job's General Notes page for additional information.  
Alpine, a division of ITW Building Components Group Inc. shall not be responsible for any deviation from this drawing, any failure to build the truss in conformance with ANSI/TPI 1, or for handling, shipping, installation and bracing of trusses. A seal on this drawing or cover page listing this drawing, indicates acceptance of professional engineering responsibility solely for the design shown. The suitability and use of this drawing for any structure is the responsibility of the Building Designer per ANSI/TPI 1 Sec.2.  
For more information see these web sites: Alpine: alpineitw.com; TPI: tpinst.org; SBCA: sbcacomponents.com; ICC: iccsafe.org; AWC: awc.org





SEQN: 645534 FROM: RFG	COMN Ply: 1 Qty: 16	Job Number: 24-1859 Parsons Truss Label: P1	Cust: R 215 JRRef: 1Y432150001 T6 DrwNo: 288.24.0818.06963 KD / DF 10/14/2024
---------------------------	---------------------------	---	---



Loading Criteria (psf)	Wind Criteria	Snow Criteria (Pg, Pf in PSF)	Defl/CSI Criteria	▲ Maximum Reactions (lbs), or *=PLF
TCLL: 20.00 TCDL: 10.00 BCLL: 0.00 BCDL: 10.00 Des Ld: 40.00 NCBCLL: 10.00 Soffit: 2.00 Load Duration: 1.25 Spacing: 24.0 "	Wind Std: ASCE 7-22 Speed: 130 mph Enclosure: Closed Risk Category: II EXP: C Kzt: NA Mean Height: 15.00 ft TCDL: 5.0 psf BCDL: 5.0 psf MWFRS Parallel Dist: h to 2h C&C Dist a: 3.00 ft Loc. from endwall: not in 13.00 ft GCpi: 0.18 Wind Duration: 1.60	Pg: NA Ct: NA CAT: NA Pf: NA Ce: NA Lu: NA Cs: NA Snow Duration: NA Building Code: FBC 8th Ed. 2023 Res. TPI Std: 2014 Rep Fac: Yes FT/RT: 20(0)/10(0) Plate Type(s): WAVE	PP Deflection in loc L/defl L/# VERT(LL): 0.001 D 999 360 VERT(CL): 0.002 D 999 240 HORZ(LL): -0.001 D - - HORZ(TL): 0.001 D - - Creep Factor: 2.0 Max TC CSI: 0.099 Max BC CSI: 0.083 Max Web CSI: 0.018 VIEW Ver: 23.02.04.0123.14	Gravity Loc R+ / R- / Rh / Rw / U / RL Non-Gravity A - /-18 /- /33 /37 /53 B* 105 /- /- /59 /4 /- E - /-18 /- /10 /14 /- Wind reactions based on MWFRS A Brg Wid = 7.3 Min Req = 1.5 (Truss) B Brg Wid = 76.3 Min Req = - E Brg Wid = 7.3 Min Req = 1.5 (Truss) Bearings A, B, & E are a rigid surface. Members not listed have forces less than 375#

#### Lumber

Top chord: 2x4 SP #2;  
Bot chord: 2x4 SP #2;  
Webs: 2x4 SP #3;

#### Plating Notes

All plates are 2X4(A1) except as noted.

#### Loading

Gable end supports 8" max rake overhang. Top chord must not be cut or notched.

#### Wind

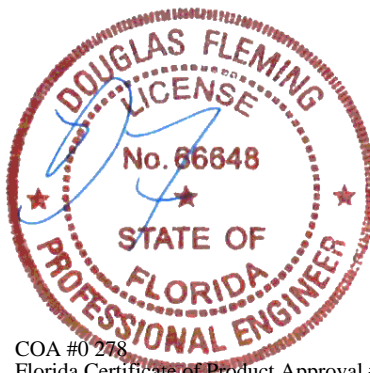
Wind loads based on MWFRS with additional C&C member design.

Wind loading based on both gable and hip roof types.

#### Additional Notes

Refer to DWG PB160220723 for piggyback details.

The overall height of this truss excluding overhang is 2'-0-14.

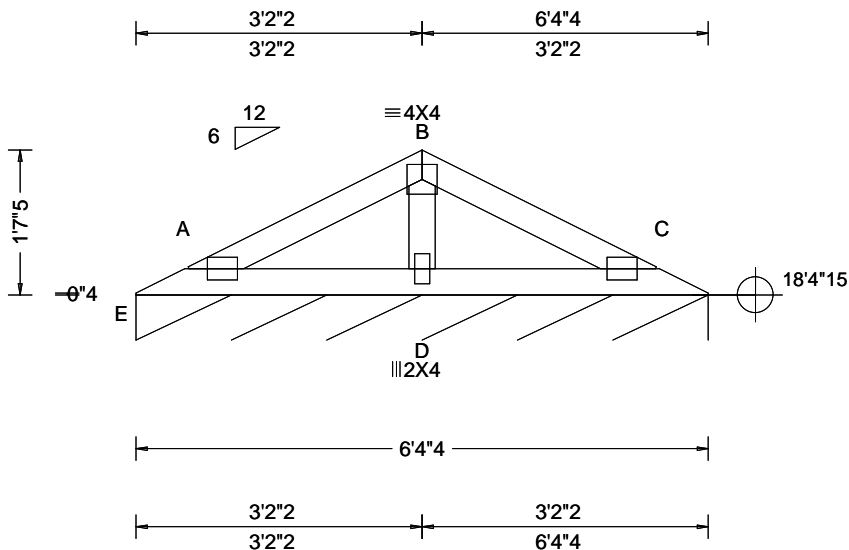


COA #0278  
Florida Certificate of Product Approval #FL1999  
10/14/2024

**\*\*WARNING\*\*** READ AND FOLLOW ALL NOTES ON THIS DRAWING!  
**\*\*IMPORTANT\*\*** FURNISH THIS DRAWING TO ALL CONTRACTORS INCLUDING THE INSTALLERS  
Trusses require extreme care in fabricating, handling, shipping, installing and bracing. Refer to and follow the latest edition of BCSI (Building Component Safety Information, by TPI and SBCA) for safety practices prior to performing these functions. Installers shall provide temporary bracing per BCSI. Unless noted otherwise, top chord shall have properly attached structural sheathing and bottom chord shall have a properly attached rigid ceiling. Locations shown for permanent lateral restraint of webs shall have continuous lateral restraint (CLR), installed with diagonal bracing installed on the CLR per BCSI sections B3, B7, or B10, as applicable. Apply plates to each face of truss and position as shown above and on the Joint Details, unless noted otherwise. Refer to drawings 160A-Z for standard plate positions. Refer to job's General Notes page for additional information.  
Alpine, a division of ITW Building Components Group Inc. shall not be responsible for any deviation from this drawing, any failure to build the truss in conformance with ANSI/TPI 1, or for handling, shipping, installation and bracing of trusses. A seal on this drawing or cover page listing this drawing, indicates acceptance of professional engineering responsibility solely for the design shown. The suitability and use of this drawing for any structure is the responsibility of the Building Designer per ANSI/TPI 1 Sec.2.  
For more information see these web sites: Alpine: [alpineitw.com](http://alpineitw.com); TPI: [tpinst.org](http://tpinst.org); SBCA: [sbcacomponents.com](http://sbcacomponents.com); ICC: [iccsafe.org](http://iccsafe.org); AWC: [awc.org](http://awc.org)

**ALPINE**  
AN ITW COMPANY  
155 Harlem Ave  
North Building, 4th Floor  
Glenview, IL 60025

SEQN: 645536 FROM: RFG	GABL Ply: 1 Qty: 2	Job Number: 24-1859 Parsons Truss Label: P1E	Cust: R 215 JRef: 1Y432150001 T9 DrwNo: 288.24.0818.09510 KD / DF 10/14/2024
---------------------------	--------------------------	--	--



Loading Criteria (psf)	Wind Criteria	Snow Criteria (Pg,Pf in PSF)	Defl/CSI Criteria	▲ Maximum Reactions (lbs), or *=PLF
TCLL: 20.00 TCDL: 10.00 BCLL: 0.00 BCDL: 10.00 Des Ld: 40.00 NCBCLL: 10.00 Soffit: 2.00 Load Duration: 1.25 Spacing: 24.0 "	Wind Std: ASCE 7-22 Speed: 130 mph Enclosure: Closed Risk Category: II EXP: C Kzt: NA Mean Height: 15.00 ft TCDL: 5.0 psf BCDL: 5.0 psf MWFRS Parallel Dist: 0 to h/2 C&C Dist a: 3.00 ft Loc. from endwall: not in 10.00 ft GCpi: 0.18 Wind Duration: 1.60	Pg: NA Ct: NA CAT: NA Pf: NA Ce: NA Lu: NA Cs: NA Snow Duration: NA Building Code: FBC 8th Ed. 2023 Res. TPI Std: 2014 Rep Fac: Varies by Ld Case FT/RT:20(0)/10(0) Plate Type(s): WAVE	PP Deflection in loc L/defl L/# VERT(LL): 0.004 C 999 360 VERT(CL): 0.013 C 999 240 HORZ(LL): -0.002 C - - HORZ(TL): 0.006 C - - Creep Factor: 2.0 Max TC CSI: 0.248 Max BC CSI: 0.176 Max Web CSI: 0.038 VIEW Ver: 23.02.04.0123.14	Gravity Non-Gravity Loc R+ / R- / Rh / Rw / U / RL E* 134 /- /- /39 /- /- Wind reactions based on MWFRS E Brg Wid = 76.2 Min Req = - Bearing E is a rigid surface. Members not listed have forces less than 375# <b>Maximum Gable Forces Per Ply (lbs)</b> Gables Tens.Comp. B - D 13 -501

#### Lumber

Top chord: 2x4 SP #2;  
Bot chord: 2x4 SP #2;  
Webs: 2x4 SP #3;

#### Plating Notes

All plates are 3X4(D1) except as noted.

#### Loading

Truss designed to support 1-0-0 top chord outlookers and cladding load not to exceed 7.00 PSF one face and 24.0" span opposite face. Top chord must not be cut or notched, unless specified otherwise.

#### Purlins

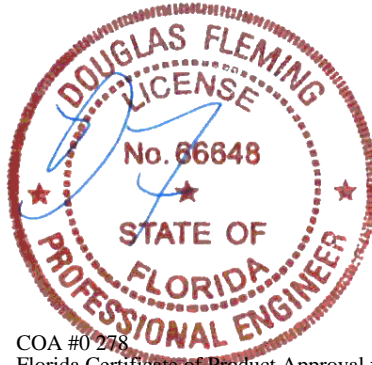
In lieu of structural panels use purlins to brace TC @ 24" oc.

#### Wind

Wind loads based on MWFRS with additional C&C member design.  
Wind loading based on both gable and hip roof types.

#### Additional Notes

Refer to DWG PB160220723 for piggyback details.  
The overall height of this truss excluding overhang is 1-8-15.

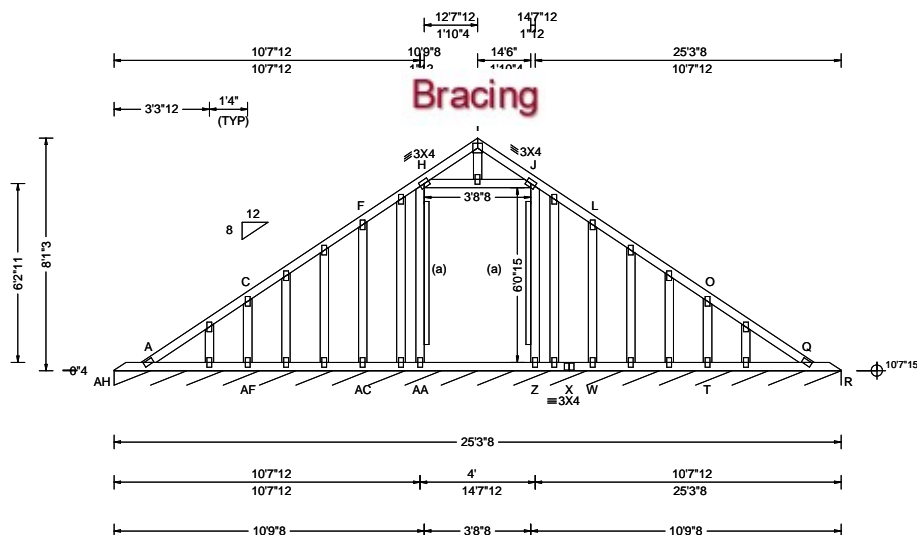


COA #0278  
Florida Certificate of Product Approval #FL1999  
10/14/2024

**\*\*WARNING\*\*** READ AND FOLLOW ALL NOTES ON THIS DRAWING!  
**\*\*IMPORTANT\*\*** FURNISH THIS DRAWING TO ALL CONTRACTORS INCLUDING THE INSTALLERS  
Trusses require extreme care in fabricating, handling, shipping, installing and bracing. Refer to and follow the latest edition of BCSI (Building Component Safety Information, by TPI and SBCA) for safety practices prior to performing these functions. Installers shall provide temporary bracing per BCSI. Unless noted otherwise, top chord shall have properly attached structural sheathing and bottom chord shall have a properly attached rigid ceiling. Locations shown for permanent lateral restraint of webs shall have continuous lateral restraint (CLR), installed with diagonal bracing installed on the CLR per BCSI sections B3, B7, or B10, as applicable. Apply plates to each face of truss and position as shown above and on the Joint Details, unless noted otherwise. Refer to drawings 160A-Z for standard plate positions. Refer to job's General Notes page for additional information.  
Alpine, a division of ITW Building Components Group Inc. shall not be responsible for any deviation from this drawing, any failure to build the truss in conformance with ANSI/TPI 1, or for handling, shipping, installation and bracing of trusses. A seal on this drawing or cover page listing this drawing, indicates acceptance of professional engineering responsibility solely for the design shown. The suitability and use of this drawing for any structure is the responsibility of the Building Designer per ANSI/TPI 1 Sec.2.  
For more information see these web sites: Alpine: [alpineitw.com](http://alpineitw.com); TPI: [tpinst.org](http://tpinst.org); SBCA: [sbccomponents.com](http://sbccomponents.com); ICC: [iccsafe.org](http://iccsafe.org); AWC: [awc.org](http://awc.org)

**ALPINE**  
AN ITW COMPANY  
155 Harlem Ave  
North Building, 4th Floor  
Glenview, IL 60025

SEQN: 645475 FROM: RFG	GABL Ply: 1 Qty: 1	Job Number: 24-1859 Parsons Truss Label: V1	Cust: R 215 JRef: 1Y432150001 T1 DrwNo: 288.24.0818.26060 KD / DF 10/14/2024
---------------------------	--------------------------	---	--



Loading Criteria (psf)	Wind Criteria	Snow Criteria (Pg, Pf in PSF)	Defl/CSI Criteria	▲ Maximum Reactions (lbs), or *=PLF
TCLL: 20.00 TCDL: 10.00 BCLL: 0.00 BCDL: 10.00 Des Ld: 40.00 NCBCLL: 10.00 Soffit: 2.00 Load Duration: 1.25 Spacing: 24.0 "	Wind Std: ASCE 7-22 Speed: 130 mph Enclosure: Closed Risk Category: II EXP: C Kzt: NA Mean Height: 15.00 ft TCDL: 5.0 psf BCDL: 5.0 psf MWFRS Parallel Dist: 0 to h/2 C&C Dist a: 3.00 ft Loc. from endwall: Any GCpi: 0.18 Wind Duration: 1.60	Pg: NA Ct: NA CAT: NA Pf: NA Ce: NA Lu: NA Cs: NA Snow Duration: NA Building Code: FBC 8th Ed. 2023 Res. TPI Std: 2014 Rep Fac: Varies by Ld Case FT/RT: 20(0)/10(0) Plate Type(s): WAVE	PP Deflection in loc L/defl L/# VERT(LL): 0.002 I 999 360 VERT(CL): 0.005 I 999 240 HORZ(LL): -0.004 F - - HORZ(TL): 0.004 F - - Creep Factor: 2.0 Max TC CSI: 0.079 Max BC CSI: 0.087 Max Web CSI: 0.893 VIEW Ver: 23.02.04.0123.14	Gravity Non-Gravity Loc R+ / R- / Rh / Rw / U / RL R* 114 /- /- /46 /14 /10 Wind reactions based on MWFRS R Brg Wid = 303 Min Req = - Bearing AH is a rigid surface. Members not listed have forces less than 375#

#### Lumber

Top chord: 2x4 SP #2;  
Bot chord: 2x4 SP #2;  
Webs: 2x4 SP #3;

#### Plating Notes

All plates are 2X4 except as noted.

#### Loading

Truss designed to support 1-0-0 top chord outlookers and cladding load not to exceed 7.00 PSF one face and 24.0" span opposite face. Top chord must not be cut or notched, unless specified otherwise.

#### Wind

Wind loads based on MWFRS with additional C&C member design.

Wind loading based on both gable and hip roof types.

Gable meets L/120 deflection criteria for wind load applied to face. Calculated deflection ratio is L/209.

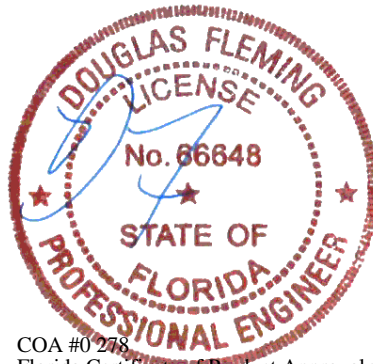
#### Gable Reinforcement

(a) 2x4 "L" reinforcement. Any species and grade. 80% length of web member. Attach with 10d (0.131"x3", min.) nails @ 2" oc at each end for the first 18" and then 4" oc for the remainder.

#### Additional Notes

Exposed portion of gable face shall be reinforced with sheathing and the wind pressures shall be transferred into lateral diaphragms. Connections and designs for diaphragms is the responsibility of the Building Designer in accordance with ANSI/TPI 1.

The overall height of this truss excluding overhang is 8-1-3.



COA #0248

Florida Certificate of Product Approval #FL1999  
10/14/2024

#### \*\*WARNING\*\* READ AND FOLLOW ALL NOTES ON THIS DRAWING!

#### \*\*IMPORTANT\*\* FURNISH THIS DRAWING TO ALL CONTRACTORS INCLUDING THE INSTALLERS

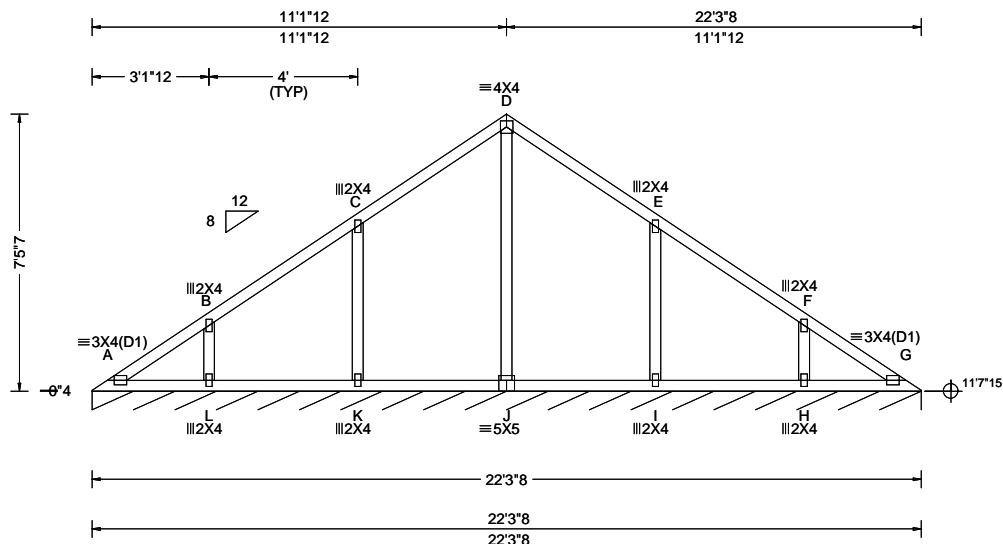
Trusses require extreme care in fabricating, handling, shipping, installing and bracing. Refer to and follow the latest edition of BCSI (Building Component Safety Information, by TPI and SBCA) for safety practices prior to performing these functions. Installers shall provide temporary bracing per BCSI. Unless noted otherwise, top chord shall have properly attached structural sheathing and bottom chord shall have a properly attached rigid ceiling. Locations shown for permanent lateral restraint of webs shall have continuous lateral restraint (CLR), installed with diagonal bracing installed on the CLR per BCSI sections B3, B7, or B10, as applicable. Apply plates to each face of truss and position as shown above and on the Joint Details, unless noted otherwise. Refer to drawings 160A-Z for standard plate positions. Refer to job's General Notes page for additional information.

Alpine, a division of ITW Building Components Group Inc. shall not be responsible for any deviation from this drawing, any failure to build the truss in conformance with ANSI/TPI 1, or for handling, shipping, installation and bracing of trusses. A seal on this drawing or cover page listing this drawing, indicates acceptance of professional engineering responsibility solely for the design shown. The suitability and use of this drawing for any structure is the responsibility of the Building Designer per ANSI/TPI 1 Sec.2.

For more information see these web sites: Alpine: [alpineitw.com](http://alpineitw.com); TPI: [tpinst.org](http://tpinst.org); SBCA: [sbccomponents.com](http://sbccomponents.com); ICC: [iccsafe.org](http://iccsafe.org); AWC: [awc.org](http://awc.org)



SEQN: 645423 FROM: RFG	VAL	Ply: 1 Qty: 1	Job Number: 24-1859 Parsons Truss Label: V2	Cust: R 215 JRef: 1Y432150001 T19 DrwNo: 288.24.0818.28813 KD / DF 10/14/2024
---------------------------	-----	------------------	---	---



Loading Criteria (psf)	Wind Criteria	Snow Criteria (Pg, Pf in PSF)	Defl/CSI Criteria	▲ Maximum Reactions (lbs), or *PLF
TCLL: 20.00 TCDL: 10.00 BCLL: 0.00 BCDL: 10.00 Des Ld: 40.00 NCBCLL: 10.00 Soffit: 2.00 Load Duration: 1.25 Spacing: 24.0 "	Wind Std: ASCE 7-22 Speed: 130 mph Enclosure: Closed Risk Category: II EXP: C Kzt: NA Mean Height: 15.54 ft TCDL: 5.0 psf BCDL: 5.0 psf MWFRS Parallel Dist: 0 to h/2 C&C Dist a: 3.00 ft Loc. from endwall: not in 4.50 ft GCpi: 0.18 Wind Duration: 1.60	Pg: NA Ct: NA CAT: NA Pf: NA Ce: NA Lu: NA Cs: NA Snow Duration: NA Building Code: FBC 8th Ed. 2023 Res. TPI Std: 2014 Rep Fac: Yes FT/RT: 20(0)/10(0) Plate Type(s): WAVE	PP Deflection in loc L/defl L/# VERT(LL): 0.002 G 999 360 VERT(CL): 0.005 G 999 240 HORZ(LL): 0.002 E - - HORZ(TL): 0.003 E - - Creep Factor: 2.0 Max TC CSI: 0.214 Max BC CSI: 0.113 Max Web CSI: 0.199 VIEW Ver: 23.02.04.0123.14	Gravity Non-Gravity Loc R+ / R- / Rh / Rw / U / RL G* 84 /- /- /45 /13 /9 Wind reactions based on MWFRS G Brg Wid = 267 Min Req = - Bearing A is a rigid surface. Members not listed have forces less than 375#

#### Lumber

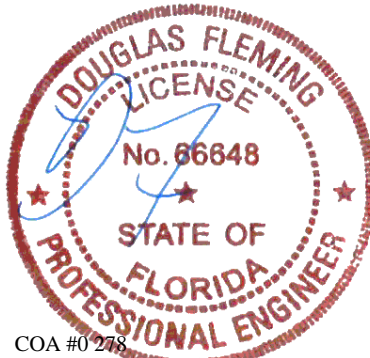
Top chord: 2x4 SP #2;  
Bot chord: 2x4 SP #2;  
Webs: 2x4 SP #3;

#### Wind

Wind loads based on MWFRS with additional C&C member design.  
Wind loading based on both gable and hip roof types.

#### Additional Notes

See DWGS VALTN220723 and VAL180220723 for valley details.  
The overall height of this truss excluding overhang is 7'-5-7".

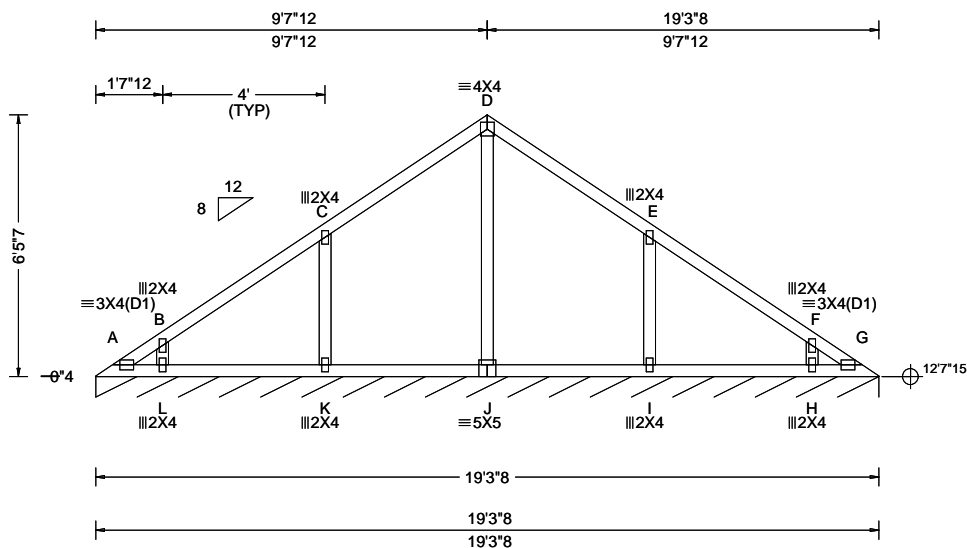


COA #0 278  
Florida Certificate of Product Approval #FL1999  
10/14/2024

**\*\*WARNING\*\* READ AND FOLLOW ALL NOTES ON THIS DRAWING!**  
**\*\*IMPORTANT\*\* FURNISH THIS DRAWING TO ALL CONTRACTORS INCLUDING THE INSTALLERS**  
Trusses require extreme care in fabricating, handling, shipping, installing and bracing. Refer to and follow the latest edition of BCSI (Building Component Safety Information, by TPI and SBCA) for safety practices prior to performing these functions. Installers shall provide temporary bracing per BCSI. Unless noted otherwise, top chord shall have properly attached structural sheathing and bottom chord shall have a properly attached rigid ceiling. Locations shown for permanent lateral restraint of webs shall have continuous lateral restraint (CLR), installed with diagonal bracing installed on the CLR per BCSI sections B3, B7, or B10, as applicable. Apply plates to each face of truss and position as shown above and on the Joint Details, unless noted otherwise. Refer to drawings 160A-Z for standard plate positions. Refer to job's General Notes page for additional information.  
Alpine, a division of ITW Building Components Group Inc. shall not be responsible for any deviation from this drawing, any failure to build the truss in conformance with ANSI/TPI 1, or for handling, shipping, installation and bracing of trusses. A seal on this drawing or cover page listing this drawing, indicates acceptance of professional engineering responsibility solely for the design shown. The suitability and use of this drawing for any structure is the responsibility of the Building Designer per ANSI/TPI 1 Sec.2.  
For more information see these web sites: Alpine: [alpineitw.com](http://alpineitw.com); TPI: [tpinst.org](http://tpinst.org); SBCA: [sbccomponents.com](http://sbccomponents.com); ICC: [iccsafe.org](http://iccsafe.org); AWC: [awc.org](http://awc.org)

**ALPINE**  
AN ITW COMPANY  
155 Harlem Ave  
North Building, 4th Floor  
Glenview, IL 60025

SEQN: 645410 FROM: RFG	VAL	Ply: 1 Qty: 1	Job Number: 24-1859 Parsons Truss Label: V3	Cust: R 215 JRef: 1Y432150001 T20 DrwNo: 288.24.0818.30900 KD / DF 10/14/2024
---------------------------	-----	------------------	---	---



Loading Criteria (psf)	Wind Criteria	Snow Criteria (Pg, Pf in PSF)	Defl/CSI Criteria	▲ Maximum Reactions (lbs), or *PLF
TCLL: 20.00 TCDL: 10.00 BCLL: 0.00 BCDL: 10.00 Des Ld: 40.00 NCBCLL: 10.00 Soffit: 2.00 Load Duration: 1.25 Spacing: 24.0 "	Wind Std: ASCE 7-22 Speed: 130 mph Enclosure: Closed Risk Category: II EXP: C Kzt: NA Mean Height: 16.04 ft TCDL: 5.0 psf BCDL: 5.0 psf MWFRS Parallel Dist: h/2 to h C&C Dist a: 3.00 ft Loc. from endwall: not in 4.50 ft GCpi: 0.18 Wind Duration: 1.60	Pg: NA Ct: NA CAT: NA Pf: NA Ce: NA Lu: NA Cs: NA Snow Duration: NA  Building Code: FBC 8th Ed. 2023 Res. TPI Std: 2014 Rep Fac: Yes FT/RT: 20(0)/10(0) Plate Type(s): WAVE	PP Deflection in loc L/defl L/# VERT(LL): 0.001 D 999 360 VERT(CL): 0.002 D 999 240 HORZ(LL): -0.001 C - - HORZ(TL): 0.002 C - - Creep Factor: 2.0 Max TC CSI: 0.219 Max BC CSI: 0.113 Max Web CSI: 0.126  VIEW Ver: 23.02.04.0123.14	Gravity Non-Gravity Loc R+ / R- / Rh / Rw / U / RL G* 84 /- /- /44 /12 /9 Wind reactions based on MWFRS G Brg Wid = 231 Min Req = - Bearing A is a rigid surface. Members not listed have forces less than 375#

#### Lumber

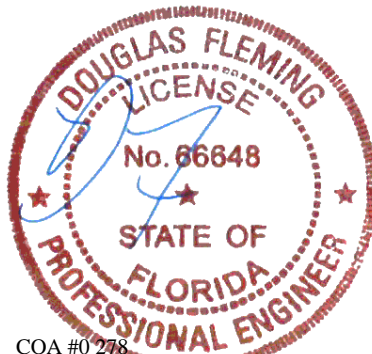
Top chord: 2x4 SP #2;  
Bot chord: 2x4 SP #2;  
Webs: 2x4 SP #3;

#### Wind

Wind loads based on MWFRS with additional C&C member design.  
Wind loading based on both gable and hip roof types.

#### Additional Notes

See DWGS VALTN220723 and VAL180220723 for valley details.  
The overall height of this truss excluding overhang is 6'-5"-7".

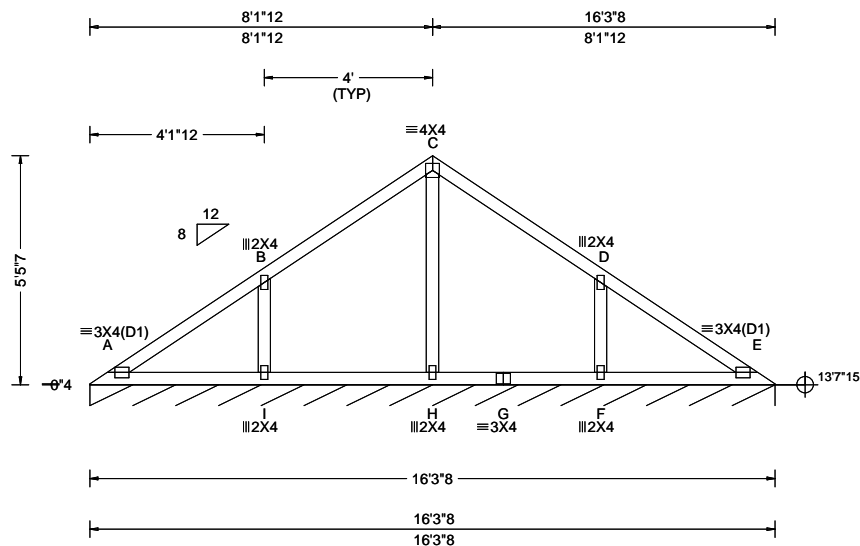


COA #0278  
Florida Certificate of Product Approval #FL1999  
10/14/2024

**\*\*WARNING\*\*** READ AND FOLLOW ALL NOTES ON THIS DRAWING!  
**\*\*IMPORTANT\*\*** FURNISH THIS DRAWING TO ALL CONTRACTORS INCLUDING THE INSTALLERS  
Trusses require extreme care in fabricating, handling, shipping, installing and bracing. Refer to and follow the latest edition of BCSI (Building Component Safety Information, by TPI and SBCA) for safety practices prior to performing these functions. Installers shall provide temporary bracing per BCSI. Unless noted otherwise, top chord shall have properly attached structural sheathing and bottom chord shall have a properly attached rigid ceiling. Locations shown for permanent lateral restraint of webs shall have continuous lateral restraint (CLR), installed with diagonal bracing installed on the CLR per BCSI sections B3, B7, or B10, as applicable. Apply plates to each face of truss and position as shown above and on the Joint Details, unless noted otherwise. Refer to drawings 160A-Z for standard plate positions. Refer to job's General Notes page for additional information.  
Alpine, a division of ITW Building Components Group Inc. shall not be responsible for any deviation from this drawing, any failure to build the truss in conformance with ANSI/TPI 1, or for handling, shipping, installation and bracing of trusses. A seal on this drawing or cover page listing this drawing, indicates acceptance of professional engineering responsibility solely for the design shown. The suitability and use of this drawing for any structure is the responsibility of the Building Designer per ANSI/TPI 1 Sec.2.  
For more information see these web sites: Alpine: [alpineitw.com](http://alpineitw.com); TPI: [tpinst.org](http://tpinst.org); SBCA: [sbcacomponents.com](http://sbcacomponents.com); ICC: [iccsafe.org](http://iccsafe.org); AWC: [awc.org](http://awc.org)

**ALPINE**  
AN ITW COMPANY  
155 Harlem Ave  
North Building, 4th Floor  
Glenview, IL 60025

SEQN: 645469 FROM: RFG	VAL Ply: 1 Qty: 1	Job Number: 24-1859 Parsons Truss Label: V4	Cust: R 215 JRef: 1Y432150001 T21 DrwNo: 288.24.0818.37330 KD / DF 10/14/2024
---------------------------	-------------------------	---	---



Loading Criteria (psf)	Wind Criteria	Snow Criteria (Pg, Pf in PSF)	Defl/CSI Criteria	▲ Maximum Reactions (lbs), or *PLF
TCLL: 20.00 TCDL: 10.00 BCLL: 0.00 BCDL: 10.00 Des Ld: 40.00 NCBCLL: 10.00 Soffit: 2.00 Load Duration: 1.25 Spacing: 24.0 "	Wind Std: ASCE 7-22 Speed: 130 mph Enclosure: Closed Risk Category: II EXP: C Kzt: NA Mean Height: 16.54 ft TCDL: 5.0 psf BCDL: 5.0 psf MWFRS Parallel Dist: h/2 to h C&C Dist a: 3.00 ft Loc. from endwall: not in 9.00 ft GCpi: 0.18 Wind Duration: 1.60	Pg: NA Ct: NA CAT: NA Pf: NA Ce: NA Lu: NA Cs: NA Snow Duration: NA  Building Code: FBC 8th Ed. 2023 Res. TPI Std: 2014 Rep Fac: Yes FT/RT: 20(0)/10(0) Plate Type(s): WAVE	PP Deflection in loc L/defl L/# VERT(LL): 0.005 E 999 360 VERT(CL): 0.011 E 999 240 HORZ(LL): 0.002 A - - HORZ(TL): 0.004 A - - Creep Factor: 2.0 Max TC CSI: 0.304 Max BC CSI: 0.159 Max Web CSI: 0.134  VIEW Ver: 23.02.04.0123.14	Gravity Non-Gravity Loc R+ / R- / Rh / Rw / U / RL E* 84 /- /- /44 /12 /9 Wind reactions based on MWFRS E Brg Wid = 195 Min Req = - Bearing A is a rigid surface. Members not listed have forces less than 375#

#### Lumber

Top chord: 2x4 SP #2;  
Bot chord: 2x4 SP #2;  
Webs: 2x4 SP #3;

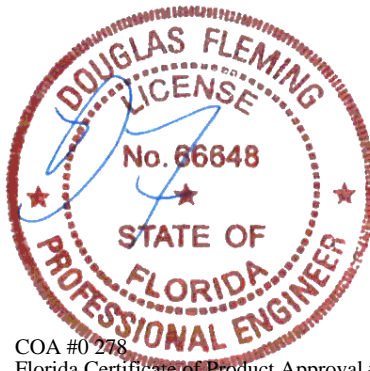
#### Wind

Wind loads based on MWFRS with additional C&C member design.  
Wind loading based on both gable and hip roof types.

#### Additional Notes

See DWGS VALTN220723 and VAL180220723 for valley details.

The overall height of this truss excluding overhang is 5-5-7.



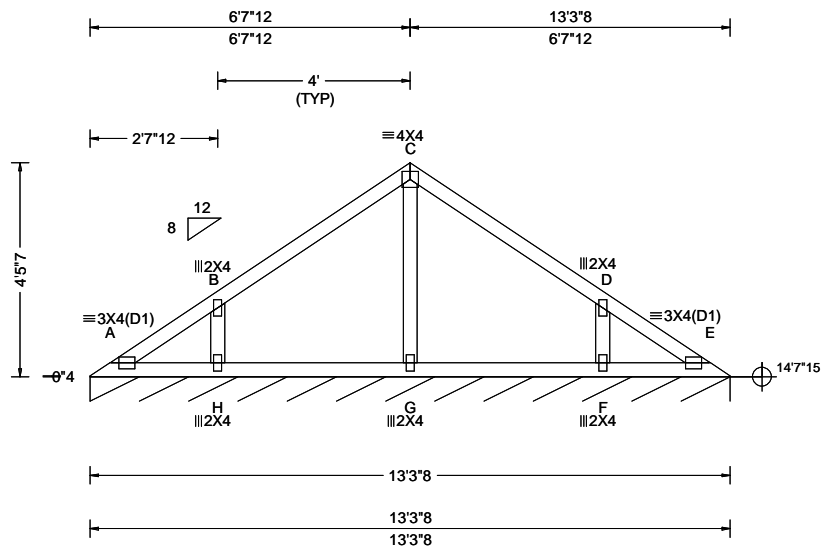
COA #0278  
Florida Certificate of Product Approval #FL1999  
10/14/2024

**\*\*WARNING\*\*** READ AND FOLLOW ALL NOTES ON THIS DRAWING!  
**\*\*IMPORTANT\*\*** FURNISH THIS DRAWING TO ALL CONTRACTORS INCLUDING THE INSTALLERS  
Trusses require extreme care in fabricating, handling, shipping, installing and bracing. Refer to and follow the latest edition of BCSI (Building Component Safety Information, by TPI and SBCA) for safety practices prior to performing these functions. Installers shall provide temporary bracing per BCSI. Unless noted otherwise, top chord shall have properly attached structural sheathing and bottom chord shall have a properly attached rigid ceiling. Locations shown for permanent lateral restraint of webs shall have continuous lateral restraint (CLR), installed with diagonal bracing installed on the CLR per BCSI sections B3, B7, or B10, as applicable. Apply plates to each face of truss and position as shown above and on the Joint Details, unless noted otherwise. Refer to drawings 160A-Z for standard plate positions. Refer to job's General Notes page for additional information.  
Alpine, a division of ITW Building Components Group Inc. shall not be responsible for any deviation from this drawing, any failure to build the truss in conformance with ANSI/TPI 1, or for handling, shipping, installation and bracing of trusses. A seal on this drawing or cover page listing this drawing, indicates acceptance of professional engineering responsibility solely for the design shown. The suitability and use of this drawing for any structure is the responsibility of the Building Designer per ANSI/TPI 1 Sec.2.  
For more information see these web sites: Alpine: [alpineitw.com](http://alpineitw.com); TPI: [tpinst.org](http://tpinst.org); SBCA: [sbccomponents.com](http://sbccomponents.com); ICC: [iccsafe.org](http://iccsafe.org); AWC: [awc.org](http://awc.org)

**ALPINE**  
AN ITW COMPANY  
155 Harlem Ave  
North Building, 4th Floor  
Glenview, IL 60025



SEQN: 645421 FROM: RFG	VAL Ply: 1 Qty: 1	Job Number: 24-1859 Parsons Truss Label: V5	Cust: R 215 JRef: 1Y432150001 T22 DrwNo: 288.24.0818.38733 KD / DF 10/14/2024
---------------------------	-------------------------	---	---



Loading Criteria (psf)	Wind Criteria	Snow Criteria (Pg, Pf in PSF)	Defl/CSI Criteria	▲ Maximum Reactions (lbs), or *PLF
TCLL: 20.00 TCDL: 10.00 BCLL: 0.00 BCDL: 10.00 Des Ld: 40.00 NCBCLL: 10.00 Soffit: 2.00 Load Duration: 1.25 Spacing: 24.0 "	Wind Std: ASCE 7-22 Speed: 130 mph Enclosure: Closed Risk Category: II EXP: C Kzt: NA Mean Height: 17.04 ft TCDL: 5.0 psf BCDL: 5.0 psf MWFRS Parallel Dist: h/2 to h C&C Dist a: 3.00 ft Loc. from endwall: not in 9.00 ft GCpi: 0.18 Wind Duration: 1.60	Pg: NA Ct: NA CAT: NA Pf: NA Ce: NA Lu: NA Cs: NA Snow Duration: NA Building Code: FBC 8th Ed. 2023 Res. TPI Std: 2014 Rep Fac: Yes FT/RT:20(0)/10(0) Plate Type(s): WAVE	PP Deflection in loc L/defl L/# VERT(LL): 0.001 C 999 360 VERT(CL): 0.001 C 999 240 HORZ(LL): -0.001 B - - HORZ(TL): 0.001 B - - Creep Factor: 2.0 Max TC CSI: 0.209 Max BC CSI: 0.113 Max Web CSI: 0.070 VIEW Ver: 23.02.04.0123.14	Gravity Non-Gravity Loc R+ / R- / Rh / Rw / U / RL E* 84 /- /- /44 /11 /9 Wind reactions based on MWFRS E Brg Wid = 159 Min Req = - Bearing A is a rigid surface. Members not listed have forces less than 375#

#### Lumber

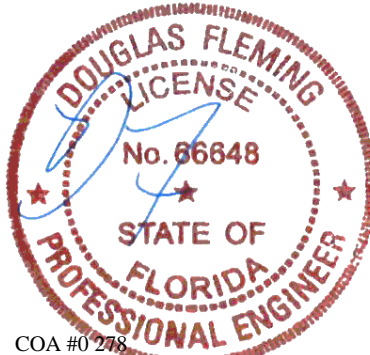
Top chord: 2x4 SP #2;  
Bot chord: 2x4 SP #2;  
Webs: 2x4 SP #3;

#### Wind

Wind loads based on MWFRS with additional C&C member design.  
Wind loading based on both gable and hip roof types.

#### Additional Notes

See DWGS VALTN220723 and VAL180220723 for valley details.  
The overall height of this truss excluding overhang is 4'-5"-7".

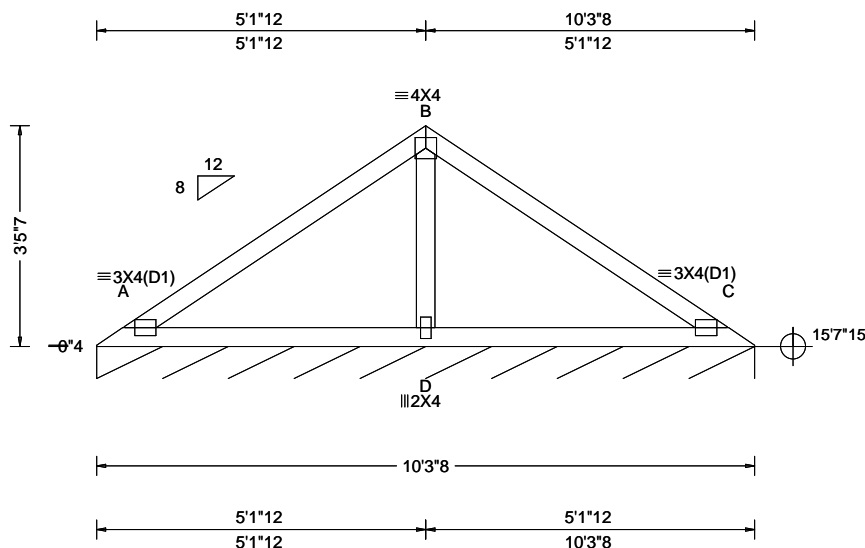


COA #0278  
Florida Certificate of Product Approval #FL1999  
10/14/2024

**\*\*WARNING\*\*** READ AND FOLLOW ALL NOTES ON THIS DRAWING!  
**\*\*IMPORTANT\*\*** FURNISH THIS DRAWING TO ALL CONTRACTORS INCLUDING THE INSTALLERS  
Trusses require extreme care in fabricating, handling, shipping, installing and bracing. Refer to and follow the latest edition of BCSI (Building Component Safety Information, by TPI and SBCA) for safety practices prior to performing these functions. Installers shall provide temporary bracing per BCSI. Unless noted otherwise, top chord shall have properly attached structural sheathing and bottom chord shall have a properly attached rigid ceiling. Locations shown for permanent lateral restraint of webs shall have continuous lateral restraint (CLR), installed with diagonal bracing installed on the CLR per BCSI sections B3, B7, or B10, as applicable. Apply plates to each face of truss and position as shown above and on the Joint Details, unless noted otherwise. Refer to drawings 160A-Z for standard plate positions. Refer to job's General Notes page for additional information.  
Alpine, a division of ITW Building Components Group Inc. shall not be responsible for any deviation from this drawing, any failure to build the truss in conformance with ANSI/TPI 1, or for handling, shipping, installation and bracing of trusses. A seal on this drawing or cover page listing this drawing, indicates acceptance of professional engineering responsibility solely for the design shown. The suitability and use of this drawing for any structure is the responsibility of the Building Designer per ANSI/TPI 1 Sec.2.  
For more information see these web sites: Alpine: [alpineitw.com](http://alpineitw.com); TPI: [tpinst.org](http://tpinst.org); SBCA: [sbccomponents.com](http://sbccomponents.com); ICC: [iccsafe.org](http://iccsafe.org); AWC: [awc.org](http://awc.org)

**ALPINE**  
AN ITW COMPANY  
155 Harlem Ave  
North Building, 4th Floor  
Glenview, IL 60025

SEQN: 645402 FROM: RFG	VAL Ply: 1 Qty: 1	Job Number: 24-1859 Parsons Truss Label: V6	Cust: R 215 JRef: 1Y432150001 T23 DrwNo: 288.24.0818.40127 KD / DF 10/14/2024
---------------------------	-------------------------	---	---



Loading Criteria (psf)	Wind Criteria	Snow Criteria (Pg, Pf in PSF)	Defl/CSI Criteria	▲ Maximum Reactions (lbs), or *PLF
TCLL: 20.00 TCDL: 10.00 BCLL: 0.00 BCDL: 10.00 Des Ld: 40.00 NCBCLL: 10.00 Soffit: 2.00 Load Duration: 1.25 Spacing: 24.0 "	Wind Std: ASCE 7-22 Speed: 130 mph Enclosure: Closed Risk Category: II EXP: C Kzt: NA Mean Height: 17.54 ft TCDL: 5.0 psf BCDL: 5.0 psf MWFRS Parallel Dist: h/2 to h C&C Dist a: 3.00 ft Loc. from endwall: not in 9.00 ft GCpi: 0.18 Wind Duration: 1.60	Pg: NA Ct: NA CAT: NA Pf: NA Ce: NA Lu: NA Cs: NA Snow Duration: NA Building Code: FBC 8th Ed. 2023 Res. TPI Std: 2014 Rep Fac: Yes FT/RT: 20(0)/10(0) Plate Type(s): WAVE	PP Deflection in loc L/def L/# VERT(LL): 0.013 C 999 360 VERT(CL): 0.028 C 999 240 HORZ(LL): -0.007 C - - HORZ(TL): 0.014 C - - Creep Factor: 2.0 Max TC CSI: 0.370 Max BC CSI: 0.310 Max Web CSI: 0.141 VIEW Ver: 23.02.04.0123.14	Gravity Non-Gravity Loc R+ / R- / Rh / Rw / U / RL C* 84 /- /- /43 /11 /8 Wind reactions based on MWFRS C Brg Wid = 123 Min Req = - Bearing A is a rigid surface. Members not listed have forces less than 375# <b>Maximum Web Forces Per Ply (lbs)</b> Webs Tens.Comp. B - D 367 -573

#### Lumber

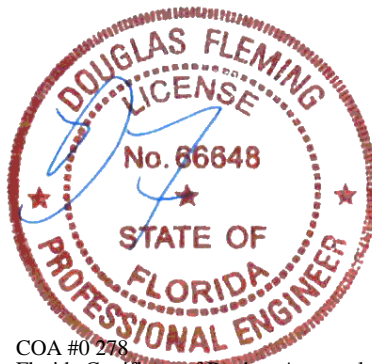
Top chord: 2x4 SP #2;  
Bot chord: 2x4 SP #2;  
Webs: 2x4 SP #3;

#### Wind

Wind loads based on MWFRS with additional C&C member design.  
Wind loading based on both gable and hip roof types.

#### Additional Notes

See DWGS VALTN220723 and VAL180220723 for valley details.  
The overall height of this truss excluding overhang is 35'-7".



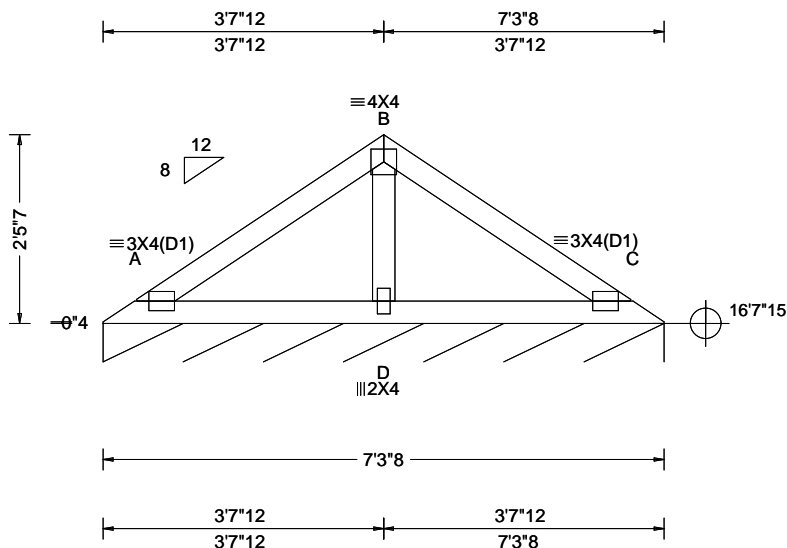
COA #0 278  
Florida Certificate of Product Approval #FL1999  
10/14/2024

**\*\*WARNING\*\*** READ AND FOLLOW ALL NOTES ON THIS DRAWING!  
**\*\*IMPORTANT\*\*** FURNISH THIS DRAWING TO ALL CONTRACTORS INCLUDING THE INSTALLERS  
Trusses require extreme care in fabricating, handling, shipping, installing and bracing. Refer to and follow the latest edition of BCSI (Building Component Safety Information, by TPI and SBCA) for safety practices prior to performing these functions. Installers shall provide temporary bracing per BCSI. Unless noted otherwise, top chord shall have properly attached structural sheathing and bottom chord shall have a properly attached rigid ceiling. Locations shown for permanent lateral restraint of webs shall have continuous lateral restraint (CLR), installed with diagonal bracing installed on the CLR per BCSI sections B3, B7, or B10, as applicable. Apply plates to each face of truss and position as shown above and on the Joint Details, unless noted otherwise. Refer to drawings 160A-Z for standard plate positions. Refer to job's General Notes page for additional information.  
Alpine, a division of ITW Building Components Group Inc. shall not be responsible for any deviation from this drawing, any failure to build the truss in conformance with ANSI/TPI 1, or for handling, shipping, installation and bracing of trusses. A seal on this drawing or cover page listing this drawing, indicates acceptance of professional engineering responsibility solely for the design shown. The suitability and use of this drawing for any structure is the responsibility of the Building Designer per ANSI/TPI 1 Sec.2.  
For more information see these web sites: Alpine: [alpineitw.com](http://alpineitw.com); TPI: [tpinst.org](http://tpinst.org); SBCA: [sbcacomponents.com](http://sbcacomponents.com); ICC: [iccsafe.org](http://iccsafe.org); AWC: [awc.org](http://awc.org)

**ALPINE**  
AN ITW COMPANY  
155 Harlem Ave  
North Building, 4th Floor  
Glenview, IL 60025



SEQN: 645426 FROM: RFG	VAL Ply: 1 Qty: 1	Job Number: 24-1859 Parsons Truss Label: V7	Cust: R 215 JRef: 1Y432150001 T24 DrwNo: 288.24.0818.41440 KD / DF 10/14/2024
---------------------------	-------------------------	---	---



Loading Criteria (psf)	Wind Criteria	Snow Criteria (Pg,Pf in PSF)	Defl/CSI Criteria	▲ Maximum Reactions (lbs), or *=PLF
TCLL: 20.00 TCDL: 10.00 BCLL: 0.00 BCDL: 10.00 Des Ld: 40.00 NCBCLL: 10.00 Soffit: 2.00 Load Duration: 1.25 Spacing: 24.0 "	Wind Std: ASCE 7-22 Speed: 130 mph Enclosure: Closed Risk Category: II EXP: C Kzt: NA Mean Height: 18.04 ft TCDL: 5.0 psf BCDL: 5.0 psf MWFRS Parallel Dist: h/2 to h C&C Dist a: 3.00 ft Loc. from endwall: not in 9.00 ft GCp: 0.18 Wind Duration: 1.60	Pg: NA Ct: NA CAT: NA Pf: NA Ce: NA Lu: NA Cs: NA Snow Duration: NA Building Code: FBC 8th Ed. 2023 Res. TPI Std: 2014 Rep Fac: Yes FT/RT:20(0)/10(0) Plate Type(s): WAVE	PP Deflection in loc L/defl L/# VERT(LL): 0.005 C 999 360 VERT(CL): 0.010 C 999 240 HORZ(LL): -0.002 C - - HORZ(TL): 0.005 C - - Creep Factor: 2.0 Max TC CSI: 0.165 Max BC CSI: 0.143 Max Web CSI: 0.082 VIEW Ver: 23.02.04.0123.14	Gravity Non-Gravity Loc R+ / R- / Rh / Rw / U / RL C* 84 /- /- /42 /10 /8 Wind reactions based on MWFRS C Brg Wid = 87.5 Min Req = - Bearing A is a rigid surface. Members not listed have forces less than 375#

#### Lumber

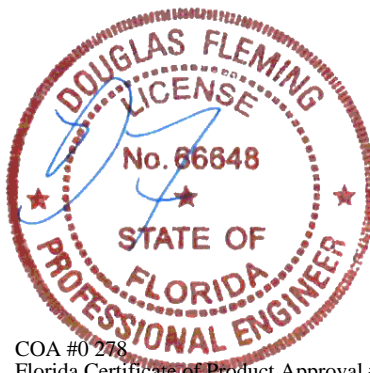
Top chord: 2x4 SP #2;  
Bot chord: 2x4 SP #2;  
Webs: 2x4 SP #3;

#### Wind

Wind loads based on MWFRS with additional C&C member design.  
Wind loading based on both gable and hip roof types.

#### Additional Notes

See DWGS VALTN220723 and VAL180220723 for valley details.  
The overall height of this truss excluding overhang is 2'-5"-7".

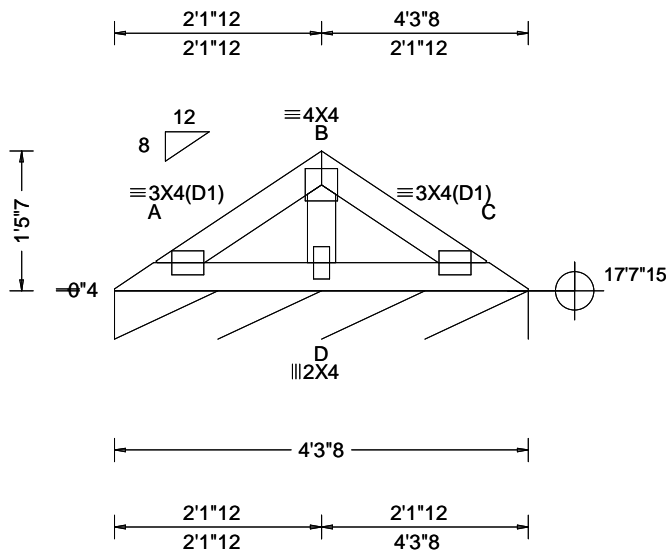


COA #0278  
Florida Certificate of Product Approval #FL1999  
10/14/2024

**\*\*WARNING\*\*** READ AND FOLLOW ALL NOTES ON THIS DRAWING!  
**\*\*IMPORTANT\*\*** FURNISH THIS DRAWING TO ALL CONTRACTORS INCLUDING THE INSTALLERS  
Trusses require extreme care in fabricating, handling, shipping, installing and bracing. Refer to and follow the latest edition of BCSI (Building Component Safety Information, by TPI and SBCA) for safety practices prior to performing these functions. Installers shall provide temporary bracing per BCSI. Unless noted otherwise, top chord shall have properly attached structural sheathing and bottom chord shall have a properly attached rigid ceiling. Locations shown for permanent lateral restraint of webs shall have continuous lateral restraint (CLR), installed with diagonal bracing installed on the CLR per BCSI sections B3, B7, or B10, as applicable. Apply plates to each face of truss and position as shown above and on the Joint Details, unless noted otherwise. Refer to drawings 160A-Z for standard plate positions. Refer to job's General Notes page for additional information.  
Alpine, a division of ITW Building Components Group Inc. shall not be responsible for any deviation from this drawing, any failure to build the truss in conformance with ANSI/TPI 1, or for handling, shipping, installation and bracing of trusses. A seal on this drawing or cover page listing this drawing, indicates acceptance of professional engineering responsibility solely for the design shown. The suitability and use of this drawing for any structure is the responsibility of the Building Designer per ANSI/TPI 1 Sec.2.  
For more information see these web sites: Alpine: [alpineitw.com](http://alpineitw.com); TPI: [tpinst.org](http://tpinst.org); SBCA: [sbccomponents.com](http://sbccomponents.com); ICC: [iccsafe.org](http://iccsafe.org); AWC: [awc.org](http://awc.org)

**ALPINE**  
AN ITW COMPANY  
155 Harlem Ave  
North Building, 4th Floor  
Glenview, IL 60025

SEQN: 645417 FROM: RFG	VAL	Ply: 1 Qty: 1	Job Number: 24-1859 Parsons Truss Label: V8	Cust: R 215 JRef: 1Y432150001 T25 DrwNo: 288.24.0818.44423 KD / DF 10/14/2024
---------------------------	-----	------------------	---	---



Loading Criteria (psf)	Wind Criteria	Snow Criteria (Pg, Pf in PSF)	Defl/CSI Criteria	▲ Maximum Reactions (lbs), or * = PLF
TCLL: 20.00 TCDL: 10.00 BCLL: 0.00 BCDL: 10.00 Des Ld: 40.00 NCBCLL: 10.00 Soffit: 2.00 Load Duration: 1.25 Spacing: 24.0 "	Wind Std: ASCE 7-22 Speed: 130 mph Enclosure: Closed Risk Category: II EXP: C Kzt: NA Mean Height: 18.54 ft TCDL: 5.0 psf BCDL: 5.0 psf MWFRS Parallel Dist: h/2 to h C&C Dist a: 3.00 ft Loc. from endwall: not in 9.00 ft GCp: 0.18 Wind Duration: 1.60	Pg: NA Ct: NA CAT: NA Pf: NA Ce: NA Lu: NA Cs: NA Snow Duration: NA Building Code: FBC 8th Ed. 2023 Res. TPI Std: 2014 Rep Fac: Yes FT/RT: 20(0)/10(0) Plate Type(s): WAVE	PP Deflection in loc L/defl L/# VERT(LL): 0.001 C 999 360 VERT(CL): 0.002 C 999 240 HORZ(LL): -0.000 C - - HORZ(TL): 0.001 C - - Creep Factor: 2.0 Max TC CSI: 0.046 Max BC CSI: 0.035 Max Web CSI: 0.038 VIEW Ver: 23.02.04.0123.14	Gravity Non-Gravity Loc R+ / R- / Rh / Rw / U / RL C* 83 /- /- /40 /7 /7 Wind reactions based on MWFRS C Brg Wid = 51.5 Min Req = - Bearing A is a rigid surface. Members not listed have forces less than 375#

#### Lumber

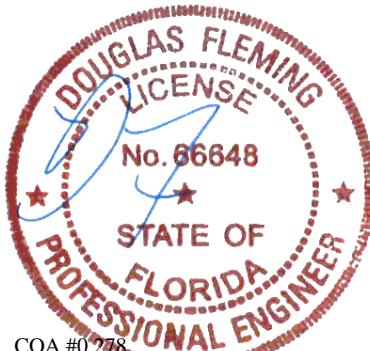
Top chord: 2x4 SP #2;  
Bot chord: 2x4 SP #2;  
Webs: 2x4 SP #3;

#### Wind

Wind loads based on MWFRS with additional C&C member design.  
Wind loading based on both gable and hip roof types.

#### Additional Notes

See DWGS VALTN220723 and VAL180220723 for valley details.  
The overall height of this truss excluding overhang is 1'-5-7.



COA #0 278  
Florida Certificate of Product Approval #FL1999  
10/14/2024

**\*\*WARNING\*\*** READ AND FOLLOW ALL NOTES ON THIS DRAWING!  
**\*\*IMPORTANT\*\*** FURNISH THIS DRAWING TO ALL CONTRACTORS INCLUDING THE INSTALLERS  
Trusses require extreme care in fabricating, handling, shipping, installing and bracing. Refer to and follow the latest edition of BCSI (Building Component Safety Information, by TPI and SBCA) for safety practices prior to performing these functions. Installers shall provide temporary bracing per BCSI. Unless noted otherwise, top chord shall have properly attached structural sheathing and bottom chord shall have a properly attached rigid ceiling. Locations shown for permanent lateral restraint of webs shall have continuous lateral restraint (CLR), installed with diagonal bracing installed on the CLR per BCSI sections B3, B7, or B10, as applicable. Apply plates to each face of truss and position as shown above and on the Joint Details, unless noted otherwise. Refer to drawings 160A-Z for standard plate positions. Refer to job's General Notes page for additional information.  
Alpine, a division of ITW Building Components Group Inc. shall not be responsible for any deviation from this drawing, any failure to build the truss in conformance with ANSI/TPI 1, or for handling, shipping, installation and bracing of trusses. A seal on this drawing or cover page listing this drawing, indicates acceptance of professional engineering responsibility solely for the design shown. The suitability and use of this drawing for any structure is the responsibility of the Building Designer per ANSI/TPI 1 Sec.2.  
For more information see these web sites: Alpine: [alpineitw.com](http://alpineitw.com); TPI: [tpinst.org](http://tpinst.org); SBCA: [sbccomponents.com](http://sbccomponents.com); ICC: [iccsafe.org](http://iccsafe.org); AWC: [awc.org](http://awc.org)

**ALPINE**  
AN ITW COMPANY  
155 Harlem Ave  
North Building, 4th Floor  
Glenview, IL 60025

# CLR Reinforcing Member Substitution

This detail is to be used when a Continuous Lateral Restraint (CLR) is specified on a truss design but an alternative web reinforcement method is desired.

## Notes:

This detail is only applicable for changing the specified CLR shown on single ply sealed designs to T-reinforcement or L-reinforcement or scab reinforcement.

Alternative reinforcement specified in chart below may be conservative. For minimum alternative reinforcement, re-run design with appropriate reinforcement type.

Use scabs instead of L- or T- reinforcement on webs with intersecting truss joints, such as K-web joints, that may interfere with proper application along the narrow face of the web.

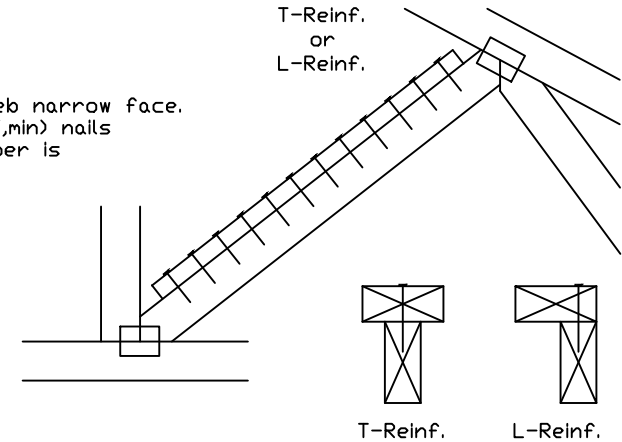
Web Member Size	Specified CLR Restraint	Alternative Reinforcement T- or L- Reinf.	Scab Reinf.
2x3 or 2x4	1 row	2x4	1-2x4
2x3 or 2x4	2 rows	2x6	2-2x4
2x6	1 row	2x4	1-2x6
2x6	2 rows	2x6	2-2x4(*)
2x8	1 row	2x6	1-2x8
2x8	2 rows	2x6	2-2x6(*)

T-reinforcement, L-reinforcement, or scab reinforcement to be same species and grade or better than web member unless specified otherwise on Engineer's sealed design.

(\*) Center scab on wide face of web. Apply (1) scab to each face of web.

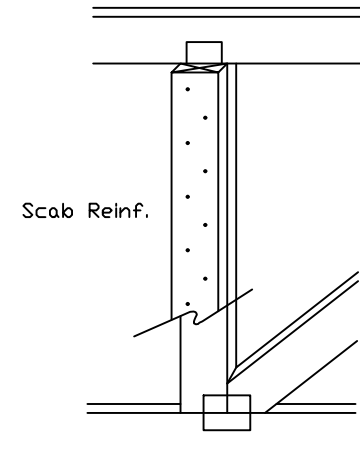
## T-Reinforcement or L-Reinforcement:

Apply to either side of web narrow face. Attach with 10d (0.128"x3.0",min) nails at 6" o.c. Reinforcing member is a minimum 80% of web member length.



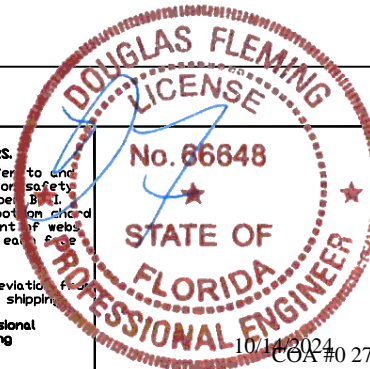
## Scab Reinforcement:

Apply scab(s) to wide face of web. No more than (1) scab per face. Attach with 10d (0.128"x3.0",min) nails at 6" o.c. Reinforcing member is a minimum 80% of web member length.



155 Harlem Ave  
North Building, 4th Floor  
Glenview, IL 60025

**WARNING: READ AND FOLLOW ALL NOTES ON THIS DRAWING**  
**IMPORTANT: FURNISH THIS DRAWING TO ALL CONTRACTORS INCLUDING THE INSTALLERS.**  
Trusses require extreme care in fabricating, handling, shipping, installing and bracing. Refer to and follow the latest edition of BCSI (Building Component Safety Information, by TPI and SBCA) for safety practices prior to performing these functions. Installers shall provide temporary bracing per BCSI. Unless noted otherwise, top chord shall have properly attached structural sheathing and bottom chord shall have a properly attached rigid ceiling. Locations shown for permanent lateral restraint of webs shall have bracing installed per BCSI sections B3, B7 or B10, as applicable. Apply plates to each face of truss and position as shown above and on the Joint Details, unless noted otherwise. Refer to drawings 160A-Z for standard plate positions.  
Alpine, a division of ITW Building Components Group Inc. shall not be responsible for any deviation from this drawing, any failure to build the truss in conformance with ANSI/TPI 1, or for handling, shipping, installation & bracing of trusses.  
A seal on this drawing or cover page listing this drawing, indicates acceptance of professional engineering responsibility solely for the design shown. The suitability and use of this drawing for any structure is the responsibility of the Building Designer per ANSI/TPI 1 Sec.2.  
For more information see this job's general notes page and these web sites:  
ALPINE: [www.alpineitw.com](http://www.alpineitw.com); TPI: [www.tpinst.org](http://www.tpinst.org); SBCA: [www.sbcacomponents.com](http://www.sbcacomponents.com); ICC: [www.iccsafe.org](http://www.iccsafe.org)



TC LL	PSF	REF CLR Subst.
TC DL	PSF	DATE 01/02/19
BC DL	PSF	DRWG BRCLBSUB0119
BC LL	PSF	
TOT. LD.	PSF	
DUR. FAC.		
SPACING		

# Piggyback Detail - ASCE 7-22: 160 mph, 30' Mean Height, Enclosed, Exposure C, Kzt=1.00

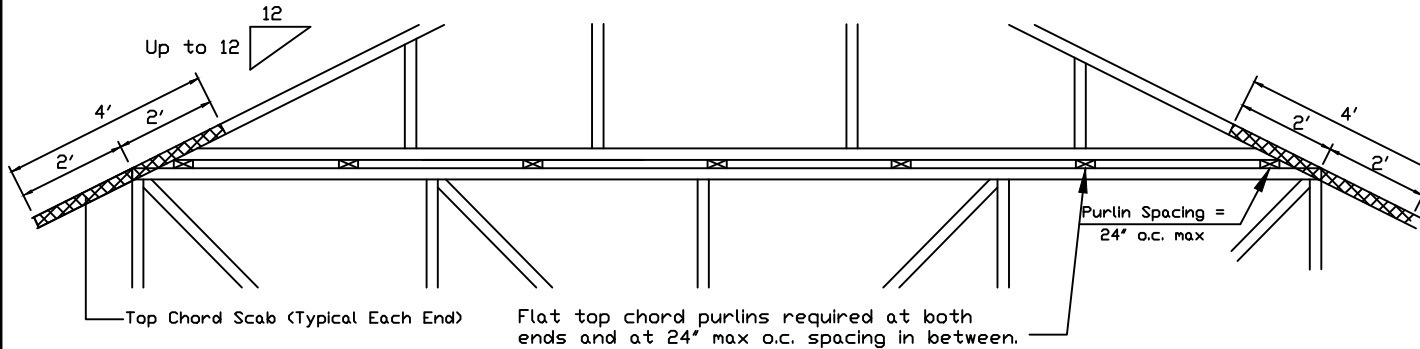
160 mph Wind, 30.00 ft Mean Hgt, ASCE 7-22, Enclosed Bldg. located anywhere in roof, Exp C, Wind DL= 5.0 psf (min), Kzt=1.0.  
Or 140 mph wind, 30.00 ft Mean Hgt, ASCE 7-22, Enclosed Bldg. located anywhere in roof, Exp D, wind DL= 5.0 psf (min), Kzt=1.0.

Note: Top chords of trusses supporting piggyback cap trusses must be adequately braced by sheathing or purlins. The building designer shall provide diagonal bracing or any other suitable anchorage to permanently restrain purlins, and lateral bracing for out of plane loads over gable ends.

Maximum truss spacing is 24' o.c. Detail is not applicable if cap supports additional loads such as cupola, steeple, chimney or drag strut loads.

\*\* Refer to Engineer's sealed truss design drawing for piggyback and base truss specifications.

## Detail A : Purlin Spacing = 24" o.c. or less

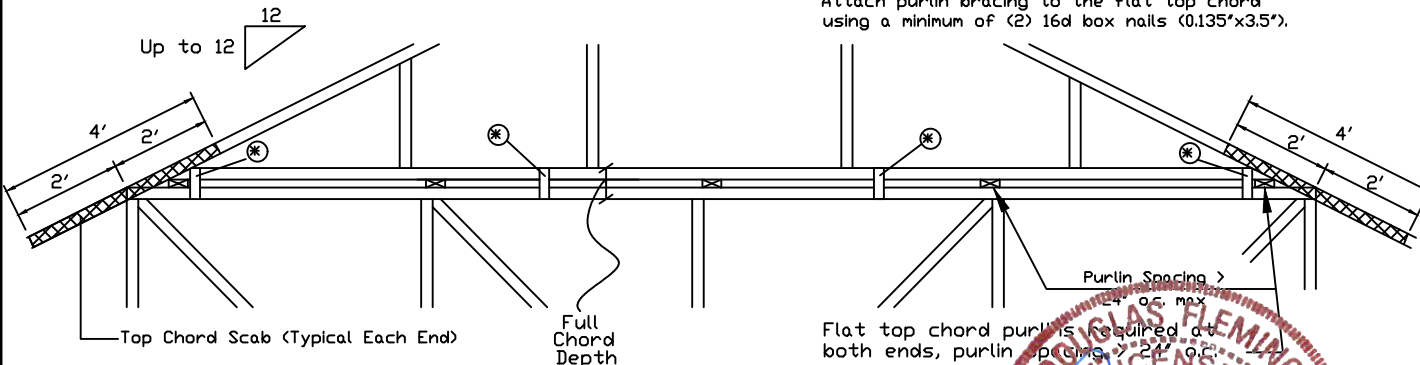


Piggyback cap truss slant nailed to all top chord purlin bracing with (2) 16d box nails (0.135"x3.5") and secure top chord with 2x4 #3 grade scab (1 side only at each end) attached with 2 rows of 10d box nails (0.128"x3") at 4' o.c.

Attach purlin bracing to the flat top chord using (2) 16d box nails (0.135"x3.5").

The top chord #3 grade 2x4 scab may be replaced with either of the following: (1) 3X8 Trulox plate attached with (8) 0.120"x1.375" nails, (4) into cap TC & (4) into base truss TC or (1) 28PB wave piggyback plate plated to the piggyback truss TC and attached to the base truss TC with (4) 0.120"x1.375" nails. Note: Nailing thru holes of wave plate is acceptable.

## Detail B : Purlin Spacing > 24" o.c.



Piggyback cap truss slant nailed to all top chord purlin bracing with (2) 16d box nails (0.135"x3.5") and secure top chord with 2x4 #3 grade scab (1 side only at each end) attached with 2 rows of 10d box nails (0.128"x3") at 4' o.c.

Attach purlin bracing to the flat top chord using a minimum of (2) 16d box nails (0.135"x3.5").

\* In addition, provide connection with one of the following methods:

<b>Trulox</b> Use 3X8 Trulox plates for 2x4 chord member, and 3X10 Trulox plates for 2x6 and larger chord members. Attach to each face @ 8' o.c. with (4) 0.120"x1.375" nails into cap bottom chord and (4) in base truss top chord. Trulox plates may be staggered 4' o.c. front to back faces.
<b>APA Rated Gusset</b> 8"x8"x7/16" (min) APA rated sheathing gussets (each face). Attach @ 8' o.c. with (8) 6d common (0.113"x2") nails per gusset, (4) in cap bottom chord and (4) in base truss top chord. Gussets may be staggered 4' o.c. front to back faces.
<b>2x4 Vertical Scabs</b> 2x4 SPF #2, full chord depth scabs (each face). Attach @ 8' o.c. with (6) 10d box nails (0.128"x3") per scab, (3) in cap bottom chord and (3) in base truss top chord. Scabs may be staggered 4' o.c. front to back faces.
<b>28PB Wave Piggyback Plate</b> One 28PB wave piggyback plate to each face @ 8' o.c. Attach teeth to piggyback at time of fabrication. Attach to supporting truss with (4) 0.120"x1.375" nails per face per ply. Piggyback plates may be staggered 4' o.c. front to back faces.

Note: If purlins or sheathing are not specified on the flat top of the base truss, purlins must be installed at 24' o.c. max. and use Detail A.

**\*\*\*WARNING\*\*\* READ AND FOLLOW ALL NOTES ON THIS DRAWING! \*\*\*IMPORTANT\*\*\* FURNISH THIS DRAWING TO ALL CONTRACTORS INCLUDING THE INSTALLERS.**

Trusses require extreme care in fabricating, handling, shipping, installing and bracing. Refer to and follow the latest edition of BCSI (Building Component Safety Information, by TPI and SBCA) or safety practices prior to performing these functions. Installers shall provide temporary bracing per BCSI. Unless noted otherwise, top chord shall have properly attached structural sheathing and bottom chord shall have a properly attached rigid ceiling. Locations shown for permanent lateral restraint of webs shall have bracing installed per BCSI sections B3, B7 or B10, as applicable. Apply plates to each face of truss and position as shown above and on the Joint Details, unless noted otherwise. Refer to drawings 160A-Z for standard plate positions.

Alpine, a division of ITW Building Components Group Inc. shall not be responsible for any deviation from this drawing, any failure to build the truss in conformance with ANSI/TPI 1, or for handling, shipping, installation & bracing of trusses.

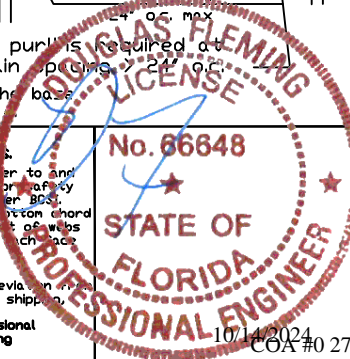
A seal on this drawing or cover page listing this drawing, indicates acceptance of professional engineering responsibility solely for the design shown. The suitability and use of this drawing for any structure is the responsibility of the Building Designer per ANSI/TPI 1 Sec.2.

For more information see this job's general notes page and these web sites:

ALPINE: [www.alpineitw.com](http://www.alpineitw.com); TPI: [www.tpinet.org](http://www.tpinet.org); SBCA: [www.sbcacomponents.com](http://www.sbcacomponents.com); ICC: [www.iccsafe.org](http://www.iccsafe.org)



155 Harlem Ave  
North Building, 4th Floor  
Glenview, IL 60025



REF PIGGYBACK  
DATE 07/03/2023  
DRWG PB160220723

SPACING 24.0"

# Valley Detail - ASCE 7-22: 180 mph, 30' Mean Height, Partially Enclosed, Exp. C, Kzt=1.00

Top Chord 2x4 SP #2N, SPF #1/#2, DF-L #2 or better.  
 Bot Chord 2x4 SP #2N or SPF #1/#2 or better.  
 Webs 2x4 SP #3, SPF #1/#2, DF-L #2 or better.

**\*\* Attach each valley to every supporting truss with:**  
 535# connection or with (1) Simpson H2.5A or  
 equivalent connector for  
 ASCE 7-22 180 mph. 30' Mean Height, Part. Enc.  
 Building, Exp. C, Wind TC DL=5 psf, Kzt = 1.00  
 Or  
 ASCE 7-22 160 mph. 30' Mean Height, Part. Enc.  
 Building, Exp. D, Wind TC DL=5 psf, Kzt = 1.00

Bottom chord may be square or pitched cut  
 as shown.

Valleys short enough to be cut as solid triangular  
 members from a single 2x6, or larger as required,  
 shall be permitted in lieu of fabricating from  
 separate 2x4 members.

All plates shown are Alpine Wave Plates.

Unless specified otherwise on engineer's sealed design, for vertical  
 valley webs taller than 7'-9" apply 2x4 "T" reinforcement, 80% length of  
 web, same species and grade or better, attached with 10d box  
 (0.128" x 3.0") nails at 6" o.c. In lieu of "T" reinforcement, 2x4 Continuous  
 Lateral Restraint applied at mid-length of web is permitted with diagonal  
 bracing as shown in DRWG BRCLBANC1014.

Top chord of truss beneath valley set must be braced with:  
 properly attached, rated sheathing applied prior to valley truss  
 installation.

Or

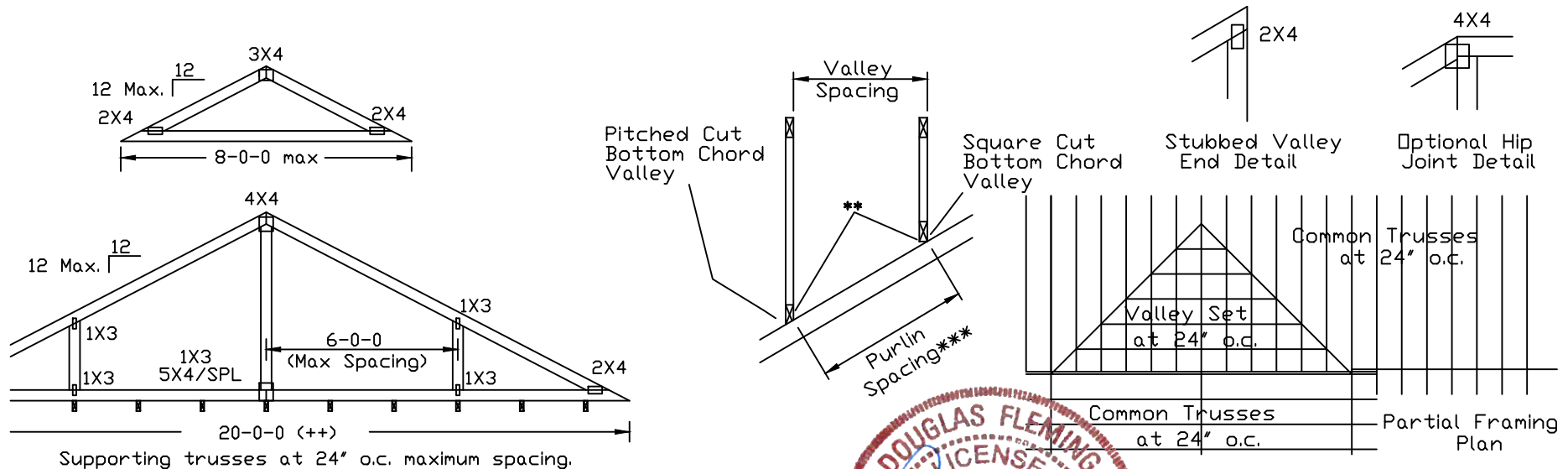
Purlins at 24" o.c. or as otherwise specified on engineer's sealed design

Or

By valley trusses used in lieu of purlin spacing as specified on  
 Engineer's sealed design.

**\*\*\* Note that the purlin spacing for bracing the top chord of the truss  
 beneath the valley is measured along the slope of the top chord.**

**++ Larger spans may be built as long as the vertical height does  
 not exceed 14'-0".**



**\*\*\*WARNING\*\*\* READ AND FOLLOW ALL NOTES ON THIS DRAWING**  
**\*\*\*IMPORTANT\*\*\* FURNISH THIS DRAWING TO ALL CONTRACTORS INCLUDING THE INSTALLERS.**  
 Trusses require extreme care in fabricating, handling, shipping, installing and bracing. Refer to and follow the latest edition of BCSI (Building Component Safety Information, by TPI and SBCA) for safety practices prior to performing these functions. Installers shall provide temporary bracing per BCSI. Unless noted otherwise, top chord shall have properly attached structural sheathing and bottom chord shall have a properly attached rigid ceiling. Locations shown for permanent lateral restraint of webs shall have bracing installed per BCSI sections B3, B7 or B10, as applicable. Apply plates to each face of truss and position as shown above and on the Joint Details, unless noted otherwise. Refer to drawings 160A-Z for standard plate positions.  
 Alpine, a division of ITW Building Components Group Inc. shall not be responsible for any deviation from this drawing, any failure to build the truss in conformance with ANSI/TPI 1, or for handling, shipping, installation & bracing of trusses.  
 A seal on this drawing or cover page listing this drawing, indicates acceptance of professional engineering responsibility solely for the design shown. The suitability and use of this drawing for any structure is the responsibility of the Building Designer per ANSI/TPI 1 Sec.2.  
 For more information see this Job's general notes page and these web sites:  
 ALPINE: [www.alpineitw.com](http://www.alpineitw.com); TPI: [www.tpinet.org](http://www.tpinet.org); SBCA: [www.sbcacomponents.com](http://www.sbcacomponents.com); ICC: [www.iccsafe.org](http://www.iccsafe.org)

**DOUGLAS FLEMING**  
**LICENSE**  
**No. 66648**  
**STATE OF FLORIDA**  
**PROFESSIONAL ENGINEER**  
 10/14/2024  
 COA #0 278

TC LL	30	30	40PSF	REF	VALLEY DETAIL
TC DL	20	15	7PSF	DATE	07/03/2023
BC DL	10	10	10 PSF	DRWG	VAL180220723
BC LL	0	0	0PSF		
TOT. LD.	60	55	57PSF		
DUR.FAC.1.25/1.33	1.15	1.15			
SPACING	24.0"				



# Valley Detail - ASCE 7-22: 30' Mean Height, Enclosed, Exp. C, Kzt=1.00

Top Chord 2x4 SP #2N, SPF #1/#2, DF-L #2 or better.  
 Bot Chord 2x4 SP #2N or SPF #1/#2 or better.  
 Webs 2x4 SP #3, SPF #1/#2, DF-L #2 or better.

\*\* Attach each valley to every supporting truss with:  
 (2) 16d box (0.135" x 3.5") nails toe-nailed for  
 ASCE 7-22, 30' Mean Height, Enclosed Building, Exp. C,  
 Wind TC DL=5 psf, Kzt = 1.00, Max. Wind Speed based on  
 supporting truss material at connection location:  
 140 mph for SP (G = 0.55, min.),  
 125 mph for DF-L (G = 0.50, min.), or  
 105 mph for HF & SPF (G = 0.42, min.).

Maximum top chord pitch is 10/12 for supporting trusses  
 below valley trusses.

Bottom chord of valley trusses may be square or  
 pitched cut as shown.

Valleys short enough to be cut as solid triangular  
 members from a single 2x6, or larger as required,  
 shall be permitted in lieu of fabricating from  
 separate 2x4 members.

All plates shown are Alpine Wave Plates.

Unless specified otherwise on engineer's sealed design, for vertical  
 valley webs taller than 7'-9" apply 2x4 "T" reinforcement, 80% length of  
 web, same species and grade or better, attached with 10d box  
 (0.128" x 3.0") nails at 6" o.c. In lieu of "T" reinforcement, 2x4 Continuous  
 Lateral Restraint applied at mid-length of web is permitted with diagonal  
 bracing as shown in DRWG BRCLBANC1014.

Top chord of truss beneath valley set must be braced with:  
 properly attached, rated sheathing applied prior to valley truss  
 installation.

Or

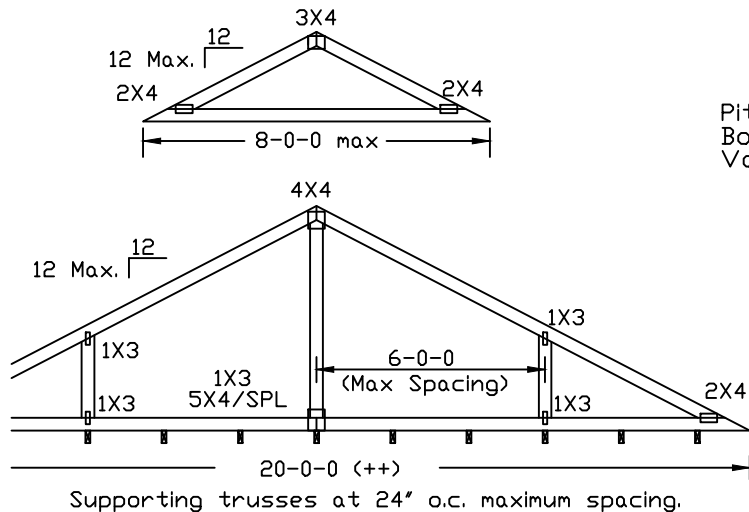
Purlins at 24" o.c. or as otherwise specified on engineer's sealed design

Or

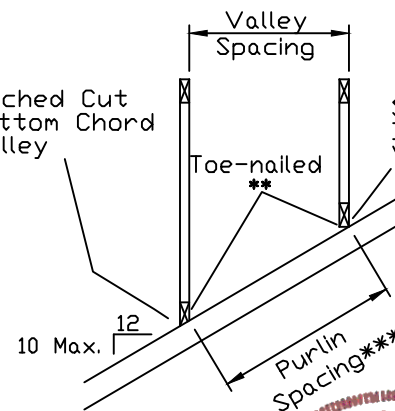
By valley trusses used in lieu of purlin spacing as specified on  
 Engineer's sealed design.

\*\*\* Note that the purlin spacing for bracing the top chord of the truss  
 beneath the valley is measured along the slope of the top chord.

++ Larger spans may be built as long as the vertical height does  
 not exceed 14'-0".



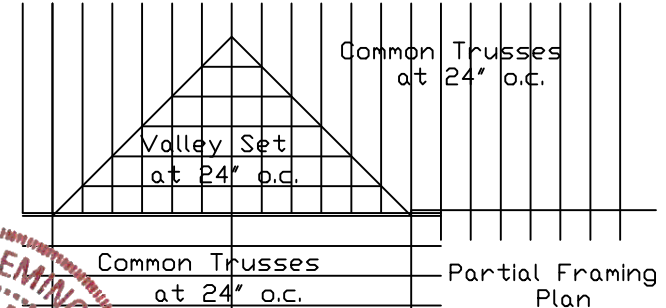
Pitched Cut  
 Bottom Chord  
 Valley



Square Cut  
 Bottom Chord  
 Valley

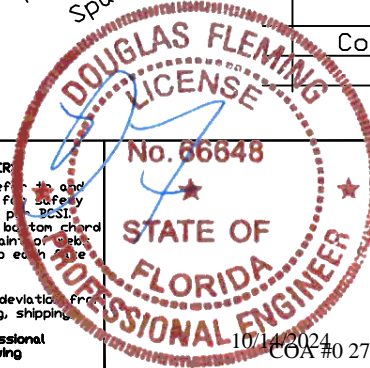
Stubbed Valley  
 End Detail

Optional Hip  
 Joint Detail



155 Harlem Ave  
 North Building, 4th Floor  
 Glenview, IL 60025

**WARNING: READ AND FOLLOW ALL NOTES ON THIS DRAWING**  
**IMPORTANT: FURNISH THIS DRAWING TO ALL CONTRACTORS INCLUDING THE INSTALLER**  
 Trusses require extreme care in fabricating, handling, shipping, installing and bracing. Refer to and follow the latest edition of BCSI (Building Component Safety Information, by TPI and SBCA) for safety practices prior to performing these functions. Installers shall provide temporary bracing per BCSI. Unless noted otherwise, top chord shall have properly attached structural sheathing and bottom chord shall have a properly attached rigid ceiling. Locations shown for permanent lateral restraint of webs shall have bracing installed per BCSI sections 83, 87 or 810, as applicable. Apply plates to each side of truss and position as shown above and on the Joint Details, unless noted otherwise. Refer to drawings 160A-Z for standard plate positions.  
 Alpine, a division of ITW Building Components Group Inc. shall not be responsible for any deviation from this drawing, any failure to build the truss in conformance with ANSI/TPI 1, or for handling, shipping, installation & bracing of trusses.  
 A seal on this drawing or cover page listing this drawing, indicates acceptance of professional engineering responsibility solely for the design shown. The suitability and use of this drawing for any structure is the responsibility of the Building Designer per ANSI/TPI 1 Sec.2.  
 For more information see this job's general notes page and these web sites:  
 ALPINE: [www.alpineitw.com](http://www.alpineitw.com) TPI: [www.tpinet.org](http://www.tpinet.org) SBCA: [www.sbcacomponents.com](http://www.sbcacomponents.com) ICC: [www.iccsafe.org](http://www.iccsafe.org)



TC LL	30	30	40PSF	REF	VALLEY DETAIL
TC DL	20	15	7 PSF	DATE	07/03/2023
BC DL	10	10	10 PSF	DRWG	VALTN220723
BC LL	0	0	0 PSF		
TOT. LD.	60	55	57PSF		
DUR.FAC.1.25/1.33	1.15	1.15			
SPACING	24.0"				