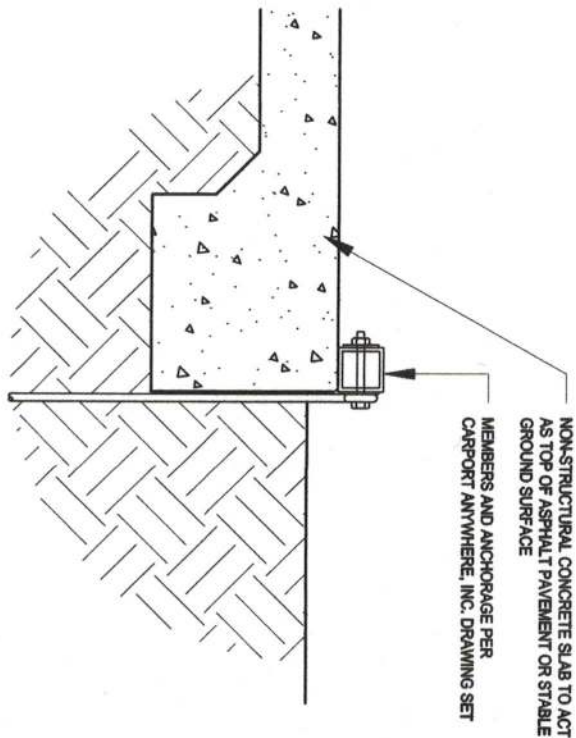


CARPORT ANYWHERE, INC. ORIGINAL DETAIL

SCALE: NONE



N. P. GEISLER, ARCHITECT MODIFICATIONS

SCALE: NONE

25 SEPTEMBER 2020



CARPORT ANYWHERE, INC.
DETAIL MODIFICATIONS
P. O. BOX 776
STARKE, FLORIDA 32720

N3
NICHOLAS
PAUL
GEISLER
ARCHITECT
N.C.A.R.B. Certified
1758 NW Brown Road
Lake City, FL 32055
386/365-4355

COMM. Nr.:

2K2091

DATE:

25SEP2020

Digitally signed by: N. P. GEISLER
DN: CN = N. P. GEISLER C = US
O = AR0007005 OU = ARCHITECT
Date: 2020.09.25 12:04:57 -05'00'

E-SEAL

TABLE 1
RAFTER FRAME, END POST, GROUND ANCHOR AND PANEL FASTENER SPACING SPECIFICATIONS

RISK CATEGORY	WIND EXPOSURE CATEGORY	ULTIMATE WIND SPEED (MPH)	NOMINAL WIND SPEED (MPH)	MAXIMUM POST / RAFTER SPACING (FEET)	AVERAGE FASTENER SPACING ON-CENTERS ALONG RAFTERS OR PURLINS, AND POSTS OR GIRTS (INCHES)	
					INTERIOR POSTS/RAFTERS	END POSTS/RAFTERS
I	C	110 TO 150	89 TO 116	5.0	6	6
		151 TO 180	117 TO 139	4.0	6	6

NOTES:

1. Specifications applicable to 26 gauge metal roof and wall panels fastened directly to 12 or 14 gauge steel tube framing, or 18 gauge hat channel roof purlins
2. Specifications applicable only for mean roof height of 20 feet or less, and roof slopes of 7° to 27° (1:5.12 to 6:12 pitch). Spacing requirements for other roof heights and/or slopes may vary.

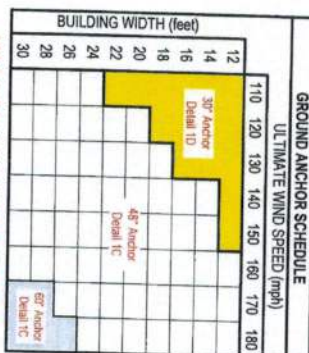
FBC APPROVED PRODUCTS LIST

PRODUCT CATEGORY	SUB CATEGORY	MANUFACTURER	APPROVAL No. & DATE	MAXIMUM ALLOWABLE WIND SPEED
STRUCTURAL COMPONENTS	ROOF DECK	UNION CONSULTING COMPANY 20 George Matthews Street 12/12/17	F13555.2-04 12/12/17	180
STRUCTURAL COMPONENTS	STRUCTURAL WALL	UNION CONSULTING COMPANY 20 George Matthews Street 12/12/17	F13555.2-04 12/12/17	180
STRUCTURAL COMPONENTS	STRUCTURAL WALL	CELESTY 20 George Matthews Street 12/12/17	F13555.1-03 12/12/17	180
STRUCTURAL COMPONENTS	FLOOR SLAB	FLUCCO BUILDING, LLC 1400 N. 7th St 12/22/17	F13798.3 06/29/15	NA
EXTENSION DOORS	SLIDING	THERMAL TRU CORPORATION Chico, CA	F13525.1-04 12/22/17	180
EXTENSION DOORS	SLIDING	ELDER DOOR AND METAL COMPANY Beverly Hills, CA	F13798.5 08/07/15	170
EXTENSION DOORS	ROLL-UP	AUTY INDUSTRIES INC. Model 220	F13884.1-05 07/28/17	180
EXTENSION DOORS	ROLL-UP	JANUS INTERNATIONAL CORPORATION Beverly Hills, CA	F13798.4-05 10/07/17	130
WINDCLOS	SHOCK PLATE	POCCHEPPE ALUMINUM COMPANY, INC. Model 100.1S	F13245.2-04 01/07/18	130
WINDCLOS	SHOCK PLATE	M. WINDCLOS AND DOORS Model 150.1S	F13798.1-02 12/22/17	180

GENERAL NOTES:

1. THESE PLANS PERTAIN ONLY TO THE STRUCTURE, INCLUDING MAIN WIND FORCE RESISTING SYSTEM, COMPONENTS AND CLADDING, AND BASE PAIL ANCHORAGE. OTHER DESIGN ISSUES, INCLUDING BUT NOT LIMITED TO PLUMBING, ELECTRICAL, INGRESS/EGRESS, PROPERTY SET-BACKS, OR OTHER LOCAL ZONING REQUIREMENTS ARE THE RESPONSIBILITY OF OTHERS.
2. THESE STRUCTURES ARE DESIGNED AS NON-HABITABLE UTILITIES/STORAGE BUILDINGS RISK CATEGORY 1 CAPABLE OF SUPPORTING DEAD LOAD OF THE STRUCTURE AND ANY CORRELATIVE AND WIND LOADS. IMPROVEMENTS NOT SPECIFICALLY ADDRESSED HEREIN WILL EXERT ADDITIONAL LOAD ON THE STRUCTURE AND INSTALLATION OF DOORS, WINDOWS AND OTHER COMPONENTS NOT LISTED IN THE NBC APPROVED PRODUCTS LIST ON THESE PLANS, AND NOT PROVIDED AND INSTALLED BY CARPORTS ANYWHERE, INC. SHALL BE AT THE OWNER'S RISK. BECHTOLD ENGINEERING AND TESTING, INC. SHALL NOT BE RESPONSIBLE FOR STRUCTURAL DAMAGE OR FAILURE DUE TO THE APPLICATION OF ADDITIONAL LOADS OF NON-APPROVED COMPONENTS.
3. ALL STEEL TUBING SHALL BE 30X3 GALVANIZED STEEL. ALL FASTENERS SHALL BE GALVANIZED OR STAINLESS STEEL.
4. FASTENED METAL ROOF AND WALL PANELS TO FRAMING WITH #12 x 14 x 3/4" SELF-DRILLING FASTENERS WITH CONTROL SEAL WASHER @ 6" O.C. AVERAGE.
5. ALL FIELD FRAMING CONNECTIONS SHALL BE #12 x 14 x 3/4" SELF-DRILLING SCREWS WITHOUT CONTROL SEAL WASHER. ALL SHOP FRAMING CONNECTIONS SHALL BE WELDED.
6. CONCRETE SHALL HAVE A MINIMUM COMPRESSIVE STRENGTH OF 2500 PSI AT 28 DAYS. THE REINFORCING STEEL SHALL BE MINIMUM GRADE 40. CONCRETE SLAB FOUNDATIONS SHALL BE REINFORCED WITH 606 WT. #4X11 Y REINFORCED WIRE FABRIC COMPLYING WITH ASTM A185, OR WITH SYNTHETIC FIBER REINFORCEMENT COMPLYING WITH ASTM 5718.
7. BASE PAIL GROUND ANCHOR REQUIREMENTS: ONE WITHIN 6" OF EVERY PAIL LOCATION, AND BOTH SIDES OF OPENINGS WHERE BASE PAIL IS ABSENT. GROUND ANCHORS ARE NOT REQUIRED FOR CONCRETE FOOTING AND/OR CONCRETE SLAB CONSTRUCTION. SEE GROUND ANCHOR SCHEDULE (THIS SHEET) FOR SPECIFIC TYPE GROUND ANCHOR REQUIREMENTS.
8. CONCRETE EXPANSION ANCHORS SHALL BE WELT ANK-BTTE MODEL, AT1292, OR SLEEVE ANCHOR MODEL, USA 1290, OR EQUIVALENT.
9. POST/RAFTER BRACING: BRACE ON EVERY POST/RAFTER CONNECTION, EXCEPT FOR END WALLS AND GABLE ENDS.
10. SLAB CONNECTION SUBGRADE: SOILS SHALL BE TERSITE TREATED AND COVERED WITH 6 MIL. VAPOR BARRIER PER SECTION R101.1 OF THE FLORIDA BUILDING CODE SIXTH EDITION (2017) (FBC FC 2017), RESIDENTIAL, AND SECTION 1961.1 OF THE FBC FC 2017, BUILDING.
11. 14 GA FRAMING IS 2 x 12" x 2 x 12" TUBE STEEL (TS). INPLETS ARE 2 x 14" x 2 x 14" TS FOR 14 GA FRAMING. 12 GA FRAMING IS 2 x 14" x 2 x 14" TS. INPLETS ARE 2 x 2 TS FOR 12 GA FRAMING.

GROUND ANCHOR SCHEDULE



DETAILS 1C AND 1D SHOWN ON SHEET 3 OF 4

METAL CARPORT INSTALLATION PLANS AND DETAILS AND FRAMING AND FASTENER SPECIFICATIONS

FOR CONSTRUCTION IN THE
STATE OF FLORIDA

PREPARED FOR:
CARPORTS ANYWHERE

P.O. BOX 116
STARKE, FL 320

P.O. BOX 116
STARKE, FL 320

PREPARED BY

BECHTEL ENGINEERING AND TESTING, INC.
605 WEST NEW YORK AVENUE
DELAND, FLORIDA 32720
Certificate of Authorization No. 00005492

Certificate of Authorization No. 00005492

THIS IS TO CERTIFY THAT THE CALCULATIONS AND SPECIFICATIONS HEREIN HAVE BEEN PREPARED BY THE UNDERSIGNED PROFESSIONAL ENGINEER, AND ARE IN ACCORDANCE WITH THE REQUIREMENTS OF SECTION 1609 OF THE FLORIDA BUILDING CODE, SIXTH EDITION (2017). THE PLANS ARE VALID UNTIL THE NEXT REVISION OF THE FLORIDA BUILDING CODE.



BECHTEL ENGINEERING AND TESTING, INC.
605 WEST NEWBARK AVENUE

Certificate of Authorization No. 5492

AN
T

Thomas Specter, D-E
Florida Legislature, 2003-2004

OFFICIAL FLOW

DISCUSSION

POKIS ANYWHERE

ENCLOSED BUILDING

TOL ENGINEERING

DECKLE

CARPORTS ANYWHERE, INC.

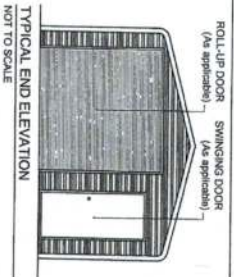
ENCLOSED BUILDING

TOL ENGINEERING

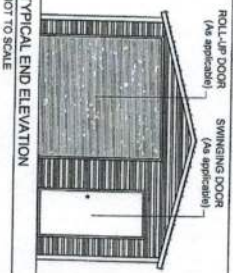
DECKLE

 BECHTOL ENGINEERING AND TESTING, INC. QUALITY CONTROL, DEVELOPMENT, AND MATERIAL TESTING SERVICES OFFICES OF ALABAMA ARE LOCATED:	NAME	DATE
	DESIGN	01/02/78
	DRAWING	NTS
	REVISION	7/18/02
APPROVED	TS	SHEET 1 OF 4

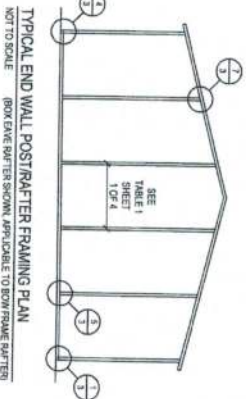
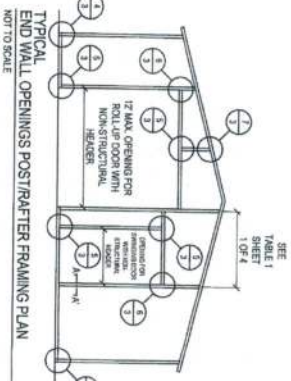
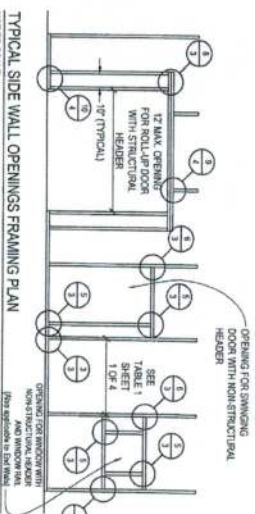
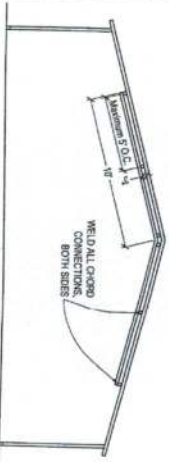
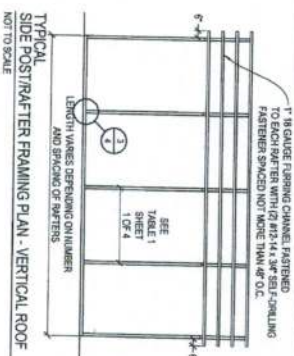
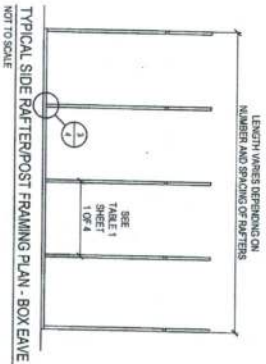
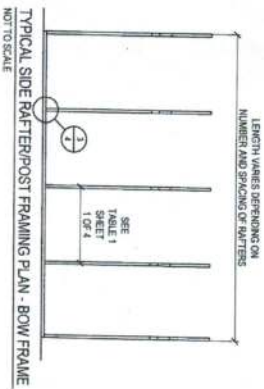
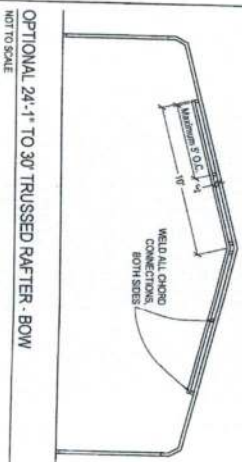
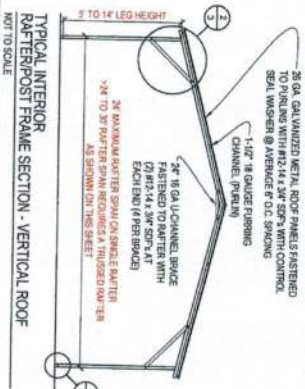
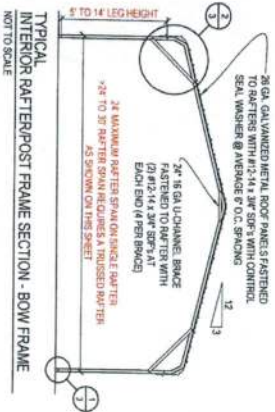
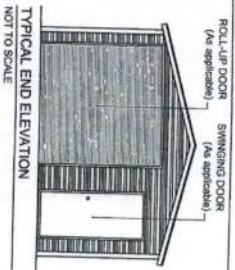
BOW FRAME RAFTER ENCLOSED BUILDING - HORIZONTAL ROOF



BOX EAVE FRAME RAFTER ENCLOSED BLDG - HORIZONTAL ROOF



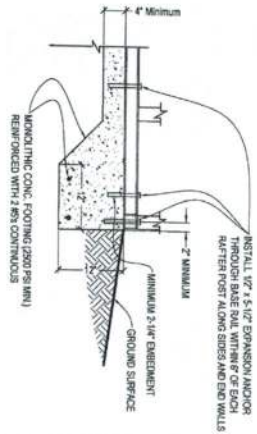
BOX EAVE FRAME RAFTER ENCLOSED BLDG - VERTICAL ROOF



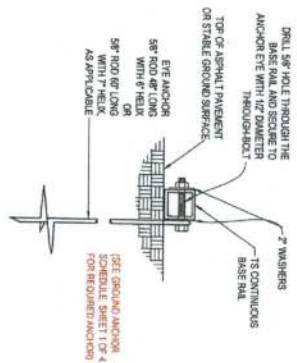
**BECHTOL ENGINEERING
AND TESTING, Inc.**
CORPORATE HEADQUARTERS, DORCHESTER, AND VARIOUS TESTING DEVICES
DIVISIONS OF ALBANY ENGINEERING, INC., ASTORIA, OR

CARPORTS ANYWHERE INC.
ENCLOSED BUILDING

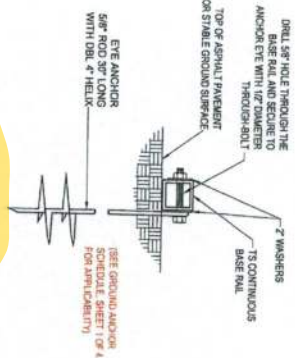
BECHTOL ENGINEERING AND TESTING, INC.
805 WEST NEW YORK AVENUE
DELAND, FLORIDA 33535
Certificate of Registration No. 38528
No. 38528
Thomas Bechtol, P.E.
Florida License No. 38538



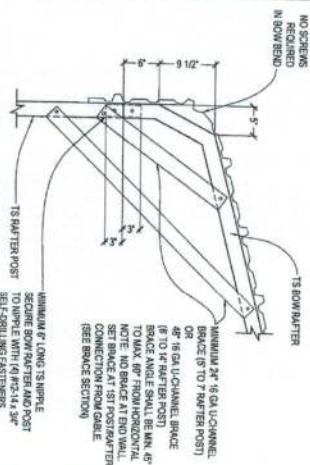
1A
CONCRETE MONO. SLAB BASE RAIL ANCHORAGE
NOT TO SCALE



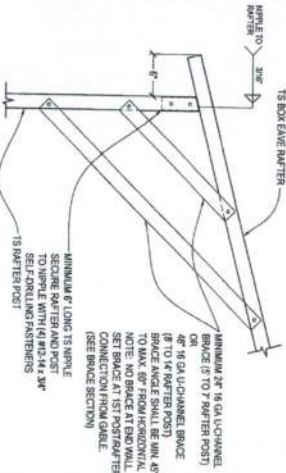
1B
BASE RAIL DEEP ANCHORAGE
NOT TO SCALE



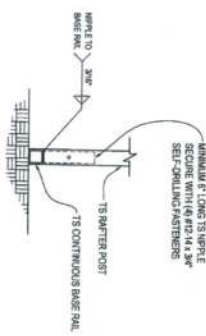
1C
BASE RAIL ANCHORAGE
NOT TO SCALE



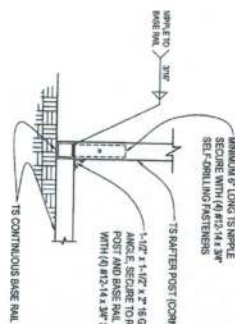
2A
BOW RAFTER/CORNER POST
CONNECTION DETAIL
NOT TO SCALE



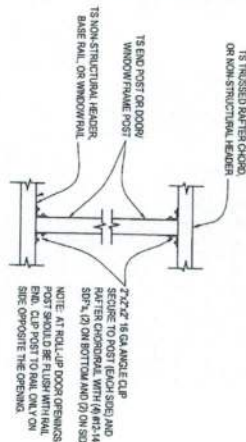
2B
BOX EAVE RAFTER/CORNER POST
CONNECTION DETAIL
NOT TO SCALE



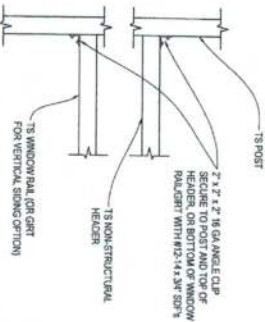
3
RAFTER POST/
BASE RAIL CONNECTION DETAIL
NOT TO SCALE



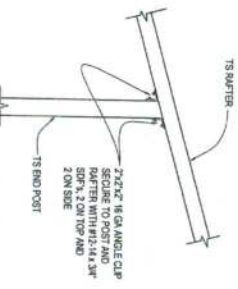
4
END POST/BASE RAIL CONNECTION DETAIL
NOT TO SCALE



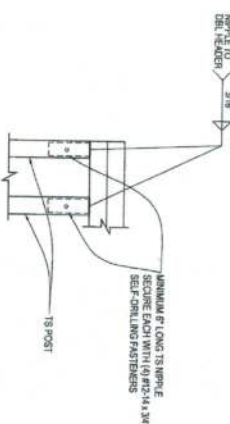
5
POST TO NON-STRUCTURAL HEADER, BASE
RAIL, OR WINDOW RAIL CONNECTION DETAIL
NOT TO SCALE



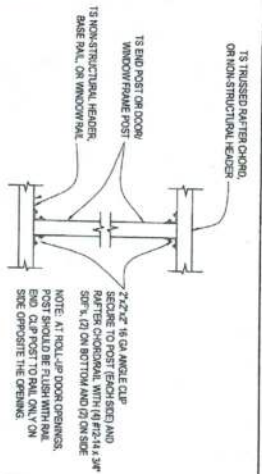
6
NON-STRUCTURAL HEADER OR WINDOW
RAIL TO POST CONNECTION DETAIL
NOT TO SCALE



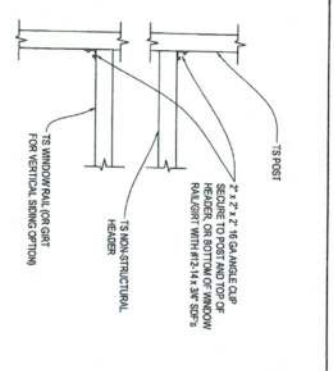
7
END POST/RAFTER CONNECTION DETAIL
NOT TO SCALE



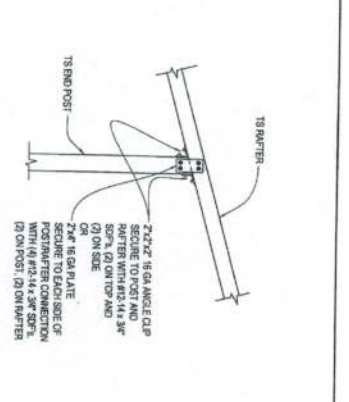
8
DBL HEADER/POST CONNECTION DETAIL
NOT TO SCALE



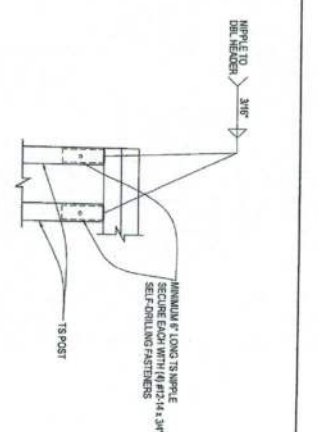
5
Not To Scale
POST TO NON-STRUCTURAL HEADER, BASE RAIL, OR WINDOW RAIL CONNECTION DETAIL



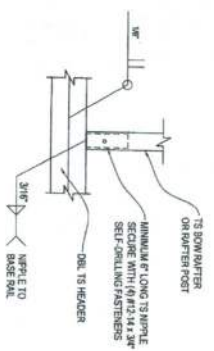
6
Not To Scale
NON-STRUCTURAL HEADER OR WINDOW RAIL TO POST CONNECTION DETAIL



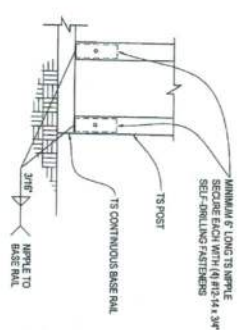
7
Not To Scale
END POST/RAFTER CONNECTION DETAIL



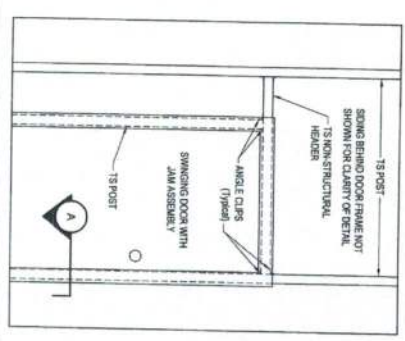
8
Not To Scale
DBL HEADER/POST CONNECTION DETAIL



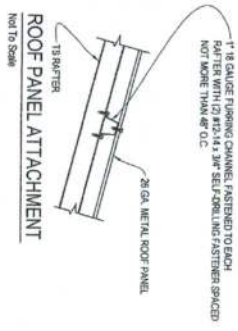
9
Not To Scale
RAFTER POST/DBL HEADER CONNECTION DETAIL



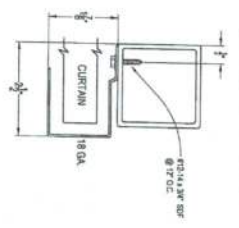
10
Not To Scale
RAFTER POST/BASE RAIL CONNECTION DETAIL



A
Not To Scale
SECTION



Not To Scale
ROOF PANEL ATTACHMENT



Not To Scale
ROLL-UP DOOR GUIDE TO POST CONNECTION DETAIL
CLIENT: 28 GA. GALVALUME METAL ROLL-UP DOOR
BASED ON TYPICAL 1\"/>

CARPORTS ANYWHERE, INC.

ENCLOSED BUILDING

BECHTOL ENGINEERING AND TESTING, INC.
 BECHTOL ENGINEERING AND TESTING, INC.
 DELAWARE PROFESSIONAL ENGINEERING LICENSE
 No. 36536
 Thomas Bechtol, P.E.
 Principal Engineer

DATE: 01/02/18
 DRAWN: NTS
 CHECKED: NTS
 SHEET 4 OF 4

TABLE 1
RAFTER FRAME, END POST, GROUND ANCHOR AND PANEL FASTENER SPACING SPECIFICATIONS

RISK CATEGORY	WIND EXPOSURE CATEGORY	ULTIMATE WIND SPEED (MPH)	NOMINAL WIND SPEED (MPH)	MAXIMUM POST/RAFTER SPACING (FEET)	AVERAGE FASTENER SPACING ON-CENTERS ALONG RAFTERS OR PURLINS AND POSTS OR GIRTS (INCHES)	
					INTERIOR POSTS/RAFTERS	END POSTS/RAFTERS
I	C	110 TO 150	89 TO 116	5.0	6	6
		151 TO 180	117 TO 139	4.0	6	6

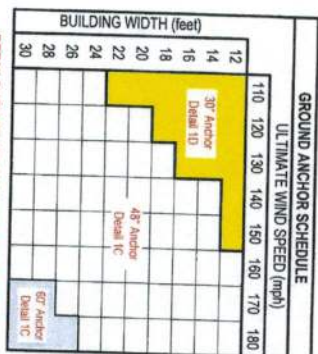
NOTES: 1. Specifications applicable to 26 gauge metal roof and wall panels fastened directly to 12 or 14 gauge steel tube framing, or 18 gauge hat channel roof purlins.
2. Specifications applicable only for mean roof height of 20 feet or less, and roof slopes of 7° to 27° (1.5:12 to 6:12 pitch). Spacing requirements for other roof heights and/or slopes may vary.

FBC APPROVED PRODUCTS LIST

PRODUCT CATEGORY	SUB CATEGORY	MANUFACTURER	APPROVAL No. & DATE	MAXIMUM ALLOWABLE WIND SPEED
STRUCTURAL COMPONENTS	ROOF DECK	UNION CORRUGATING COMPANY 25 Gauge Aluminum Panel	FL1883.5-14 12/27/17	150
STRUCTURAL COMPONENTS	STRUCTURAL WALL	UNION CORRUGATING COMPANY 25 Gauge Aluminum Panel	FL1883.5-14 12/27/17	150
STRUCTURAL COMPONENTS	STRUCTURAL WALL	FABUL 25 Gauge Aluminum Panel	FL11081.1-10 10/17/17	150
STRUCTURAL COMPONENTS	FLOOD VENT	FLOOD SOLUTIONS, LLC Model F-1008	FL11784.1-10 04/25/15	N/A
EXTERIOR DOORS	SWINGING	THESENA, TRU CORPORATION Classic-Craft	FL11025.1-14 12/22/17	150
EXTERIOR DOORS	SLIDING	ELIAR DOOR AND METAL COMPANY Series 401	FL11784.5 05/07/15	170
EXTERIOR DOORS	ROLL-UP	AKIRA INDUSTRIES INC. Model 200	FL1484.1-15 10/05/17	150
EXTERIOR DOORS	ROLL-UP	JANUS INTERNATIONAL CORPORATION Series 170	FL12705.4-15 10/07/17	130
WINDOWS	SINGLE HUNG	POCAHONTAS ALUMINUM COMPANY, INC. Model 100-VIS	FL12945.1-14 05/07/15	130
WINDOWS	SINGLE HUNG	POCAHONTAS ALUMINUM COMPANY, INC. Model 100-VIS	FL12945.1-14 05/07/15	130
WINDOWS	SINGLE HUNG	POCAHONTAS ALUMINUM COMPANY, INC. Model 100-VIS	FL12945.1-14 05/07/15	130

GENERAL NOTES:

- THESE PLANS PERTAIN ONLY TO THE STRUCTURE, INCLUDING MAIN WIND FORCE RESISTING SYSTEM, COMPONENTS AND CLADDING, AND BASE RAIL ANCHORAGE. OTHER DESIGN ISSUES, INCLUDING BUT NOT LIMITED TO PLUMBING, ELECTRICAL, INTERFERENCES, PROPERTY SET BACKS, OR OTHER LOCAL ZONING REQUIREMENTS ARE THE RESPONSIBILITY OF OTHERS.
- THESE STRUCTURES ARE DESIGNED AS NON-HABITABLE UTILITIES/STORAGE BUILDINGS, RISK CATEGORY 1, CAPABLE OF SUPPORTING DEAD LOAD OF THE STRUCTURE AND APPLICABLE LIVE AND WIND LOADS. IMPROVEMENTS NOT SPECIFICALLY ADDRESSED HEREIN WHICH EXERT ADDITIONAL LOAD ON THE STRUCTURE, AND INSTALLATION OF DOORS, WINDOWS AND OTHER COMPONENTS NOT LISTED ON THIS SHEET, AND NOT PROVIDED AND INSTALLED BY CARPORTS ANYWHERE, INC. SHALL BE AT THE OWNER'S RISK. BECHTOL ENGINEERING AND TESTING, INC. SHALL NOT BE RESPONSIBLE FOR STRUCTURAL DAMAGE OR FAILURE DUE TO THE APPLICATION OF ADDITIONAL LOADS OF NON-APPROVED COMPONENTS.
- ALL STEEL TUBING SHALL BE 50KSI GALVANIZED STEEL. ALL FASTENERS SHALL BE GALVANIZED OR STAINLESS STEEL.
- FASTEN METAL ROOF AND WALL PANELS TO FRAMING WITH #12-14 x 3" SELF DRILLING FASTENERS WITH CONTROL SEAL WASHER @ 6" O.C. AVERAGE.
- ALL FIELD FRAMING CONNECTIONS SHALL BE #12-14 x 3" SELF DRILLING SCREWS WITHOUT CONTROL SEAL WASHER. ALL SHOP FRAMING CONNECTIONS SHALL BE WELDED.
- CONCRETE SHALL HAVE A MINIMUM COMPRESSIVE STRENGTH OF 2800 PSI AT 28 DAYS. THE REINFORCING STEEL SHALL BE MINIMUM GRADE 40. CONCRETE SLAB FOUNDATIONS SHALL BE REINFORCED WITH 606 W#14XMMX4 WELDED WIRE FABRIC COMPLYING WITH ASTM A 185, OR WITH SYNTHETIC FIBER REINFORCEMENT COMPLYING WITH ASTM C1118.
- BASE RAIL GROUND ANCHOR REQUIREMENTS: ONE WITHIN 6' OF EVERY POST LOCATION, AND BOTH SIDES OF OPENINGS WHERE BASE RAIL IS ABSENT. GROUND ANCHORS ARE NOT REQUIRED FOR CONCRETE FOOTING AND/OR CONCRETE SLAB CONSTRUCTION. SEE GROUND ANCHOR SCHEDULE (THIS SHEET) FOR SPECIFIC TYPE GROUND ANCHOR REQUIREMENTS.
- CONCRETE EXPANSION ANCHORS SHALL BE WELDED ANGLE-IRON MODEL, AT1252, OR SLEEVE ANCHOR MODEL, 16A, 1250, OR EQUIVALENT.
- POST/RAFTER BRACING: BRACE ON EVERY POST/RAFTER CONNECTION, EXCEPT FOR END WALLS AND GABLE ENDS.
- SLAB FOUNDATION SUBGRADE SOILS SHALL BE TENSILE TREATED AND COVERED WITH 6 MIL VAPOR RETARDER PER SECTION R018.1 OF THE FLORIDA BUILDING CODE SIXTH EDITION (2017) (FBC-FE 2017), RESIDENTIAL, AND SECTION 1806.1 OF THE FBC-FE 2017.
- 14 GA FRAMING IS 2-1/2" x 2-1/2" TUBE STEEL (TS). NIPPLES ARE 2-1/4" x 2-1/4" TS FOR 14 GA FRAMING. 12 GA FRAMING IS 2-1/4" x 2-1/4" TS. NIPPLES ARE 2" x 2" TS FOR 12 GA FRAMING.



DETAILS 1C AND 1D SHOWN ON SHEET 3 OF 4

METAL CARPORT INSTALLATION PLANS AND DETAILS
AND
FRAMING AND FASTENER SPECIFICATIONS

FOR CONSTRUCTION IN THE
STATE OF FLORIDA

PREPARED FOR:
CARPORTS ANYWHERE
P.O. BOX 776
STANFORD, FL 32091

PREPARED BY:
BECHTOL ENGINEERING AND TESTING, INC.
605 WEST NEW YORK AVENUE
DELAND, FLORIDA 32720
Certificate of Authorization No. 00005492

THIS IS TO CERTIFY THAT THE CALCULATIONS AND SPECIFICATIONS HAVE BEEN PREPARED BY THE UNDERSIGNED PROFESSIONAL ENGINEER, AND ARE IN ACCORDANCE WITH THE REQUIREMENTS OF SECTION 1609 OF THE FLORIDA BUILDING CODE, SIXTH EDITION (2017). THE PLANS ARE VALID UNTIL THE NEXT REVISION OF THE FLORIDA BUILDING CODE.



CARPORTS ANYWHERE, INC.

ENCLOSED BUILDING

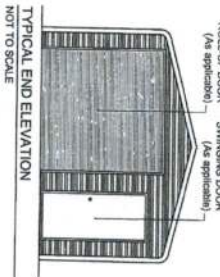
BECHTOL ENGINEERING AND TESTING, INC.

605 WEST NEW YORK AVENUE
DELAND, FLORIDA 32720
Certificate of Authorization No. 00005492

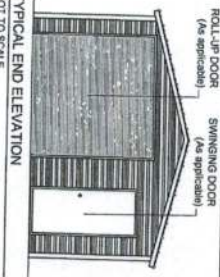
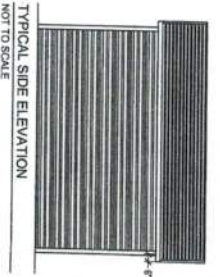
DATE	01/02/18
BY	MDG
CHECKED	NTS
DATE	01/02/18
BY	MDG
DATE	01/02/18
BY	MDG

SHEET 1 OF 4

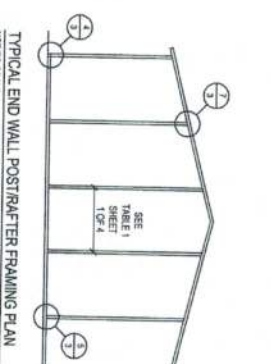
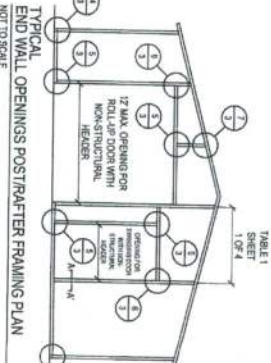
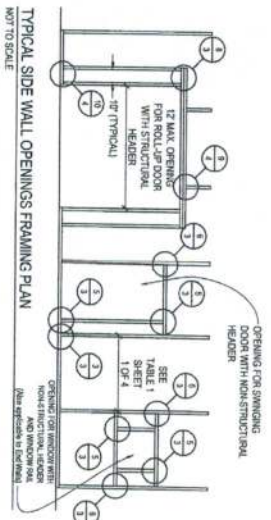
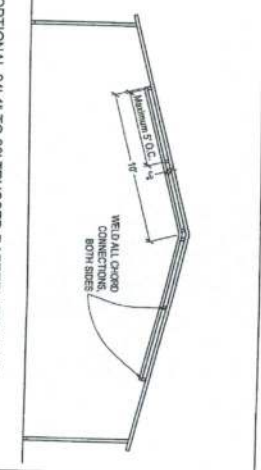
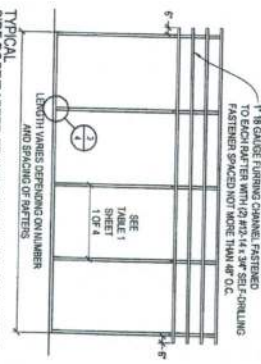
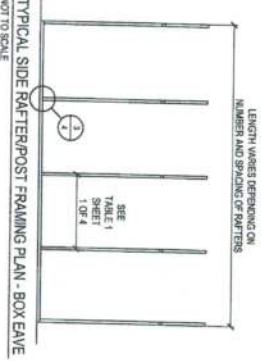
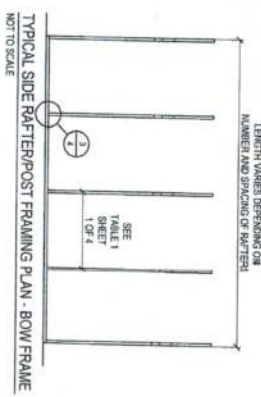
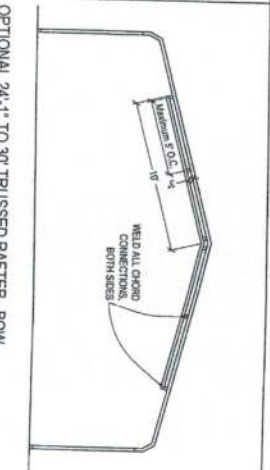
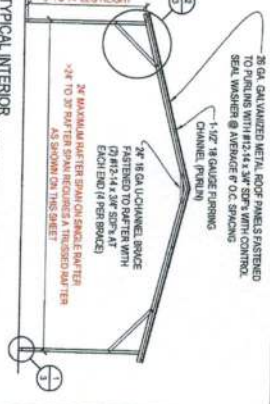
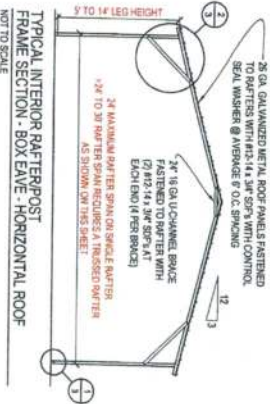
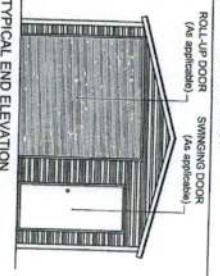
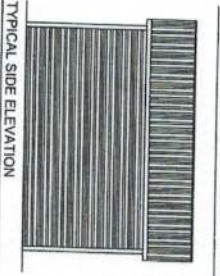
BOW FRAME RAFTER ENCLOSED BUILDING - HORIZONTAL ROOF



BOX EAVE FRAME RAFTER ENCLOSED BLDG - HORIZONTAL ROOF



BOX EAVE FRAME RAFTER ENCLOSED BLDG - VERTICAL ROOF



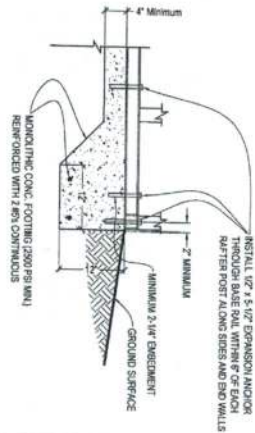
CARPORTS ANYWHERE, INC.
ENCLOSED BUILDING

BECHTOL ENGINEERING AND TESTING, INC.
605 WEST NEW YORK AVENUE
CHICAGO, ILL. 60610
TEL: (312) 321-1111
FAX: (312) 321-1112
WWW.BECHTOL-ENGINEERING.COM

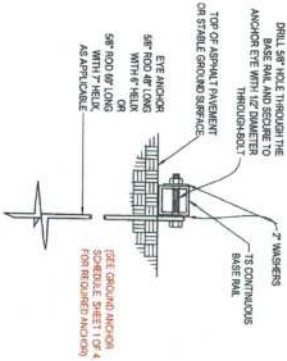
STATE OF ILLINOIS
Professional Engineer
No. 055586
Thomas Bechtol, P.E.
Firm License No. 350308

BECHTOL ENGINEERING AND TESTING, INC.
605 WEST NEW YORK AVENUE
CHICAGO, ILL. 60610
TEL: (312) 321-1111
FAX: (312) 321-1112
WWW.BECHTOL-ENGINEERING.COM

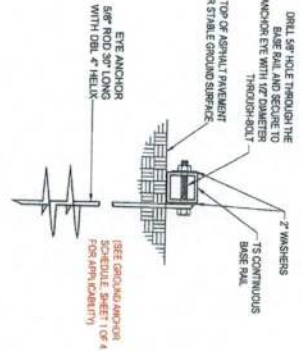
DATE: 07/20/18
DRAWN: NTS
CHECKED: TTB
DESIGNED: TTB
SHEET 2 OF 4



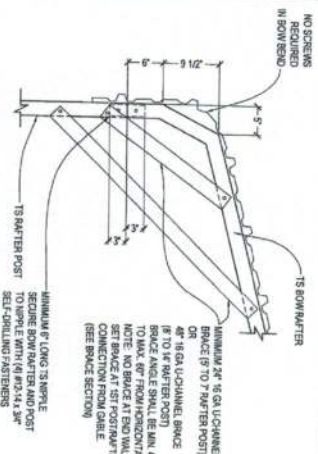
1A
CONCRETE MONO. SLAB BASE RAIL ANCHORAGE
NOT TO SCALE



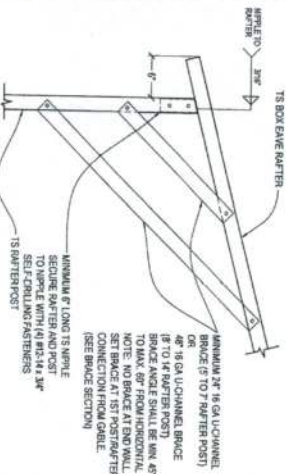
1B
BASE RAIL DEEP ANCHORAGE
NOT TO SCALE



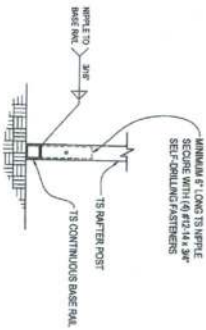
1C
BASE RAIL ANCHORAGE
NOT TO SCALE



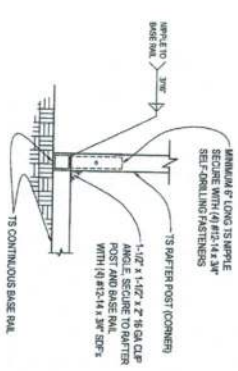
2A
BOW RAFTER/CORNER POST CONNECTION DETAIL
NOT TO SCALE



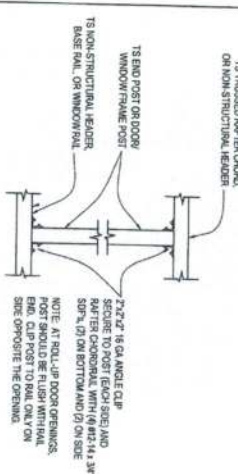
2B
BOX EAVE RAFTER/CORNER POST CONNECTION DETAIL
NOT TO SCALE



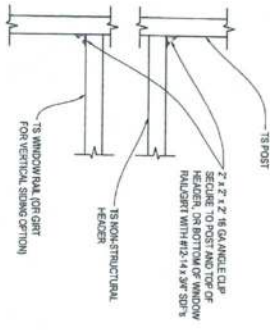
3
RAFTER POST/ BASE RAIL CONNECTION DETAIL
NOT TO SCALE



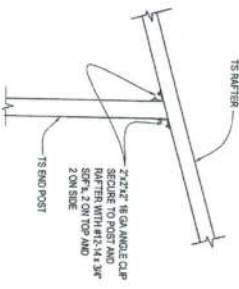
4
END POST/BASE RAIL CONNECTION DETAIL
NOT TO SCALE



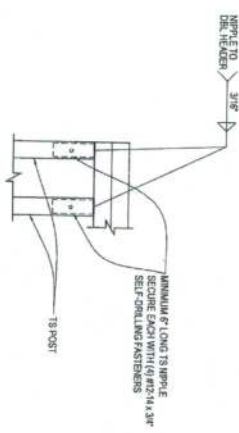
5
POST TO NON-STRUCTURAL HEADER, BASE RAIL, OR WINDOW RAIL CONNECTION DETAIL
NOT TO SCALE



6
NON-STRUCTURAL HEADER OR WINDOW RAIL TO POST CONNECTION DETAIL
NOT TO SCALE



7
END POST/RAFTER CONNECTION DETAIL
NOT TO SCALE



8
DBL HEADER/POST CONNECTION DETAIL
NOT TO SCALE

CARPORTS ANYWHERE, INC.

ENCLOSED BUILDING

BECHTEL ENGINEERING AND TESTING, INC.

DESIGN AND FIELD TESTING CONSULTANTS

Professional Engineer

Florida License No. 38528

Thomas J. Bechtel, P.E.

BECHTEL ENGINEERING

DESIGN AND FIELD TESTING CONSULTANTS

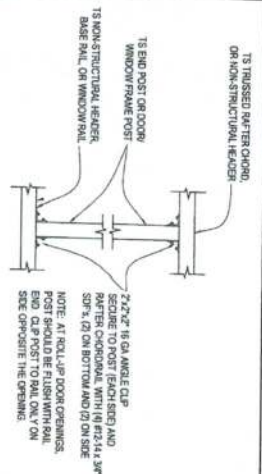
Professional Engineer

Florida License No. 38528

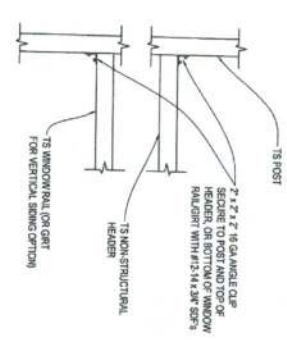
Thomas J. Bechtel, P.E.

DATE	BY	REVISION
01/20/18	UNB	NTS
01/20/18	UNB	NTS
01/20/18	UNB	NTS
01/20/18	UNB	NTS

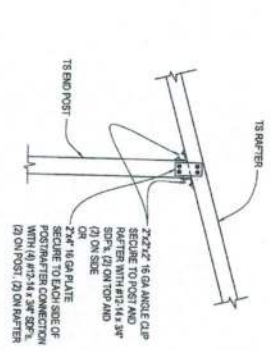
SHEET 3 OF 4



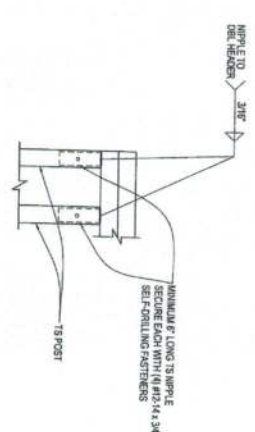
5
Not To Scale
POST TO NON-STRUCTURAL HEADER, BASE RAIL, OR WINDOW RAIL CONNECTION DETAIL



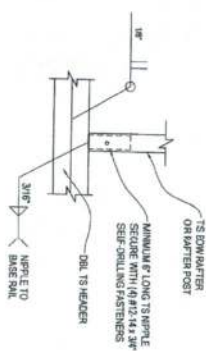
6
Not To Scale
NON-STRUCTURAL HEADER OR WINDOW RAIL TO POST CONNECTION DETAIL



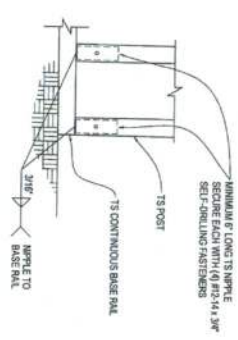
7
Not To Scale
END POST/RAFTER CONNECTION DETAIL



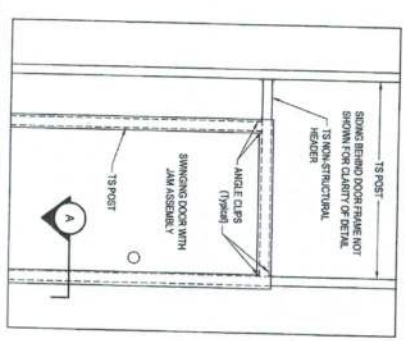
8
Not To Scale
DBL HEADER/POST CONNECTION DETAIL



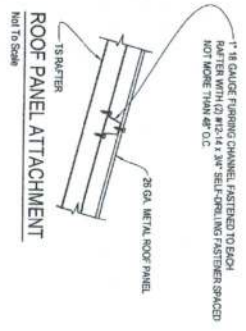
9
Not To Scale
RAFTER POST/DBL HEADER CONNECTION DETAIL



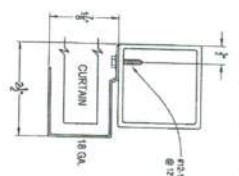
10
Not To Scale
RAFTER POST/BASE RAIL CONNECTION DETAIL



A
Not To Scale
SECTION



Not To Scale
ROLL-UP DOOR GUIDE TO POST CONNECTION DETAIL



CARPORTS ANYWHERE, INC.

ENCLOSED BUILDING

BECHTOL ENGINEERING AND TESTING, INC.

Professional Engineer License No. 38538

Thomas Bechtol, P.E.

Professional Engineer

BECHTOL ENGINEERING AND TESTING, INC.

Professional Engineer License No. 38538

Thomas Bechtol, P.E.

Professional Engineer

DATE	REV	BY	APP
01/02/18			
DATE	DATE	DATE	DATE
01/02/18	01/02/18	01/02/18	01/02/18
DESIGN	DESIGN	DESIGN	DESIGN
DESIGN	DESIGN	DESIGN	DESIGN
DESIGN	DESIGN	DESIGN	DESIGN
DESIGN	DESIGN	DESIGN	DESIGN

SHEET 4 OF 4