



9068 131st Loop Live Oak, FL 32060
(386) 688-7849 (386) 688-xxxx (fax)

BUILDING LOADS / DESCRIPTION:

WIDTH: 45 LENGTH: 100 HEIGHT: 20 /20
(BUILDING DIMENSIONS ARE NOMINAL. REFER TO PLANS).

THIS STRUCTURE IS DESIGNED UTILIZING THE LOADS INDICATED
AND APPLIED AS REQUIRED BY : FBC 20

THE CONTRACTOR IS TO CONFIRM THAT THESE LOADS COMPLY
WITH THE REQUIREMENTS OF THE LOCAL BUILDING DEPARTMENT.

ROOF DEAD LOAD: 2.500 PSF (ROOF PANELS & PURLINS)

COLLATERAL LOAD: 0.5 PSF SNOW EXPOSURE: 1.0000

ROOF LIVE LOAD: 20.00 PSF WIND EXPOSURE: B

ROOF SNOW LOAD: 0 PSF INTERNAL PRESSURE COEFF.: 0.18 / -0.18

GROUND SNOW LOAD: 0 PSF

BASIC WIND SPEED: 130 MPH SPECTRAL RESPONSE COEFF. MAPPED SPECTRAL RESPONSE ACC.

SEISMIC ZONE: B Sds 0.09 Ss 0.09

THERMAL FACTOR: 1.00 Sd1 0.08 St 0.05

IMPORTANCE FACTORS: DESIGN BASE SHEAR, V:

WIND LOAD 1.00 EXPANDED FORMULA 0.667*le*Fa*Ss*W/R

SNOW LOAD 1.1000 LONGITUDINAL 1.08

SEISMIC LOAD 1.25 TRANSVERSE 1.14

GENERAL NOTES:

- 1) MATERIALS : MINIMUM YIELD:
HOT ROLLED BAR Fy = 50.0000 ksi MIN.
STRUCTURAL STEEL SHEET Fy = 50.0000 ksi MIN.
STRUCTURAL STEEL PLATE Fy = 50.0000 ksi MIN.
COLD FORMED SHAPES Fy = 57.0000 ksi MIN.
WALL SHEETING Fy = 60.0000 ksi MIN.
ROOF SHEETING Fy = 60.0000 ksi MIN.
BOLTS A307 & A325
THE METAL BUILDING MANUFACTURER RESERVES THE RIGHT TO
SUBSTITUTE THE ABOVE MATERIALS WITH EQUAL OR BETTER MATERIAL.

- 2) BOLT TIGHTENING REQUIREMENTS:
ALL HIGH STRENGTH BOLTS ARE A325 UNLESS NOTED OTHERWISE.
HIGH STRENGTH BOLTS SHALL BE TIGHTENED BY THE TURN OF THE NUT METHOD
IN ACCORDANCE WITH THE LATEST EDITION AISC "SPECIFICATION FOR
STRUCTURAL JOINTS USING ASTM A325 OR A490 BOLTS". A325 BOLTS SHALL BE
INSTALLED WITH OUT WASHERS WHEN TIGHTENED BY THE "TURN OF THE NUT"
METHOD. ALL BOLTED CONNECTIONS, FOR SHEAR/BEARING CONNECTION TYPE
WITH BOLT THREADS EXCLUDED FROM THE SHEAR PLANE SHALL BE SNUG TIGHT
ONLY.

- 3) ALL STRUCTUAL STEEL TO RECEIVE A RUST INHIBITIVE PRIMER. THIS PAINT
IS NOT INTENDED FOR LONG TERM EXPOSURE TO THE ELEMENTS.

THIS PROJECT IS DESIGNED AS AN ENCLOSED BUILDING. ACCESSORIES
(DOORS, WINDOWS, ETC.) BY OTHERS MUST BE DESIGNED AS "COMPONENTS
AND CLADDING" IN ACCORDANCE TO SPECIFIC WIND PROVISIONS OF
REFERENCED BUILDING CODE.

0.5 PSF COLL ONLY ALLOW LIGHTING TO HANG FROM ROOF SYSTEMS
SUSPENSION OF ANY LOAD INDUCING SYSTEM IS EXPLICITLY PROHIBITED,
UNLESS A CORRESPONDING REDUCTION IN CERTIFIED LIVE/SNOW LOADS
CAN BE PERMITTED BY CODE.

Digitally signed by
ASHOKBHAI A.PATEL
Location: Valdosta
Contact info: 229-402-2640
Date: 2022.08.17
11:47:13-04'00'



ROOF PANELS:

COLOR: Galvalume +

WALL PANELS:

COLOR: NEED SIG 200

TRIM COLORS:

CABLE: NEED SIG 200

CORNER: NEED SIG 200

EAVE: NEED SIG 200

FRAMED OPENINGS: NEED SIG 200

LINER PANELS:

COLOR: N/A

LINER TRIM:

COLOR: N/A

DEFLECTION LIMITS:

EW COL: 180
EW RAF LIVE: 180
EW RAF WIND: 180
WALL GIRT: 90
PURL LIVE: 180
PURL WIND: 150
WALL PANEL: 60
ROOF PANEL LIVE: 60
ROOF PANEL WIND: 60
RF HORIZONTAL: 60
RF VERTICAL: 180
WIND BENT: 60
RF CRANE: 100
RF SEIS: 67
WIND BENT SEIS: 67

BUILDER / CONTRACTOR RESPONSIBILITIES

IT IS THE RESPONSIBILITY OF THE BUILDER/CONTRACTOR TO INSURE THAT ALL PROJECT
PLANS AND SPECIFICATIONS COMPLY WITH THE APPLICABLE REQUIREMENTS OF ANY
GOVERNING BUILDING AUTHORITIES. THE SUPPLYING OF SEALED ENGINEERING DATA AND
DRAWINGS FOR THE METAL BUILDING SYSTEM DOES NOT IMPLY OR CONSTITUTE AN
AGREEMENT THAT THE METAL BUILDING SYSTEM MANUFACTURER OR ITS DESIGN ENGINEER
IS ACTING AS THE ENGINEER OF RECORD OR DESIGN PROFESSIONAL FOR A CONSTRUCTION
PROJECT.

THE CONTRACTOR MUST SECURE ALL REQUIRED APPROVALS AND PERMITS FROM THE
APPROPRIATE AGENCY AS REQUIRED. APPROVAL OF THE METAL BUILDING SYSTEM
MANUFACTURER'S DRAWINGS AND CALCULATIONS INDICATE THAT THE METAL BUILDING
SYSTEM MANUFACTURER CORRECTLY INTERPRETED AND APPLIED THE REQUIREMENTS OF THE
CONTRACT DRAWINGS AND SPECIFICATIONS. (SECT. 4.2.1 AISC CODE OF STANDARD
PRACTICES, 9TH ED.) WHERE DISCREPANCIES EXIST BETWEEN THE METAL BUILDING SYSTEM
MANUFACTURER'S STRUCTURAL STEEL PLANS AND THE PLANS FOR OTHER TRADES, THE
STRUCTURAL STEEL PLANS SHALL GOVERN. (SECT. 3.3 AISC CODE OF STANDARD PRACTICE
9TH ED.)

DESIGN CONSIDERATIONS OF ANY MATERIALS IN THE STRUCTURE WHICH ARE NOT
FURNISHED BY THE METAL BUILDING SYSTEM MANUFACTURER ARE THE RESPONSIBILITY OF
THE CONTRACTORS AND ENGINEERS OTHER THAN THE METAL BUILDING SYSTEM
MANUFACTURER'S ENGINEER UNLESS SPECIFICALLY INDICATED.

THE CONTRACTOR IS RESPONSIBLE FOR ALL ERECTION OF STEEL AND ASSOCIATED WORK
IN COMPLIANCE WITH THE METAL BUILDING SYSTEM MANUFACTURER "FOR CONSTRUCTION"
DRAWINGS.

ALL BRACING AS SHOWN AND PROVIDED BY THE METAL BUILDING SYSTEM
MANUFACTURER FOR THIS BUILDING IS REQUIRED AND SHALL BE INSTALLED BY THE
ERECTOR AS A PERMANENT PART OF THE STRUCTURE.

TEMPORARY SUPPORTS, SUCH AS TEMPORARY GUYS, BRACES, FALSE WORK, CRIBBING
OR OTHER ELEMENTS REQUIRED FOR THE ERECTION OPERATION WILL BE DETERMINED AND
FURNISHED AND INSTALLED BY THE ERECTOR. THESE TEMPORARY SUPPORTS WILL SECURE
THE STEEL FRAMING, OR ANY PARTLY ASSEMBLED STEEL FRAMING, AGAINST LOADS
COMPARABLE IN INTENSITY TO THOSE FOR WHICH THE STRUCTURE WAS DESIGNED,
RESULTING FROM WIND, SEISMIC FORCES AND ERECTION OPERATIONS, BUT NOT THE LOADS
RESULTING FROM THE PERFORMANCE OF WORK BY OR THE ACTS OF OTHERS, NOR SUCH
UNPREDICTABLE LOADS AS THOSE DUE TO TORNADO, EXPLOSION, OR COLLISION. (SECT.
7.9.1 AISC CODE OF STANDARD PRACTICE, 9TH ED.)

WARNING: IN NO CASE SHOULD GALVALUME STEEL PANELS BE USED IN CONJUNCTION
WITH LEAD OR COPPER. BOTH LEAD AND COPPER HAVE HARMFUL CORROSION EFFECTS ON
THE ALUMINUM ZINC ALLOY COATING WHEN THEY ARE USED IN CONTACT WITH GALVALUME
STEEL PANELS. EVEN RUN-OFF FROM COPPER FLASHING, WIRING, OR TUBING ONTO
GALVALUME SHOULD BE AVOIDED.

APPROVAL NOTES

THE FOLLOWING CONDITIONS APPLY IN THE EVENT THAT THESE DRAWINGS ARE USED AS
APPROVAL DRAWINGS: IT IS IMPERATIVE THAT ANY CHANGES TO THESE DRAWINGS BE MADE
IN CONTRASTING INK (PREFERABLY RED INK), HAVE ALL INSTANCES OF CHANGE CLEARLY
INDICATED, AND BE LEGIBLE AND UNAMBIGUOUS. A SIGNATURE AND DATE IS REQUIRED ON
ALL PAGES. MANUFACTURER RESERVES THE RIGHT TO RE-SUBMIT DRAWINGS WITH
EXTENSIVE OR COMPLEX CHANGES REQUIRED TO AVOID MISFABRICATION. THIS MAY IMPACT
THE DELIVERY SCHEDULE. APPROVAL OF THESE DRAWINGS INDICATES CONCLUSIVELY THAT
THE METAL BUILDING SYSTEM MANUFACTURER HAS CORRECTLY INTERPRETED THE
CONTRACT REQUIREMENTS, AND FURTHER CONSTITUTES AGREEMENT THAT THE BUILDING AS
DRAWN WITH INDICATED CHANGES REPRESENTS THE TOTAL OF THE MATERIALS TO BE
SUPPLIED BY MANUFACTURER. ANY CHANGES NOTED ON THE DRAWINGS NOT IN
COMFORMANCE WITH THE TERMS AND REQUIREMENTS OF THE CONTRACT BETWEEN
MANUFACTURER AND ITS CUSTOMER ARE NOT BINDING ON MANUFACTURER UNLESS
SUBSEQUENTLY SPECIFICALLY ACKNOWLEDGED AND AGREED TO IN WRITING BY CHANGE
ORDER OR SEPARATE DOCUMENTATION. MANUFACTURER RECOGNIZES THAT RUBBER
STAMPS ARE ROUTINELY USED FOR INDICATING APPROVAL, DISAPPROVAL, REJECTION, OR
MERE REVIEW OF THE DRAWINGS SUBMITTED. HOWEVER, MANUFACTURER DOES NOT ACCEPT
CHANGES OR ADDITIONS TO CONTRACTUAL TERMS AND CONDITIONS THAT MAY APPEAR
WITH USE OF A STAMP OR SIMILAR INDICATION OF APPROVAL, DISAPPROVAL, ETC. SUCH
LANGUAGE APPLIED TO MANUFACTURER'S DRAWINGS BY THE CUSTOMER, ARCHITECT,
ENGINEER, OR ANY OTHER PARTY WILL BE CONSIDERED AS UNACCEPTABLE ALTERNATIONS
TO THESE DRAWING NOTES, AND WILL NOT ALTER THE CONTRACTUAL RIGHTS AND
OBLIGATIONS EXISTING BETWEEN MANUFACTURER AND ITS CUSTOMER.

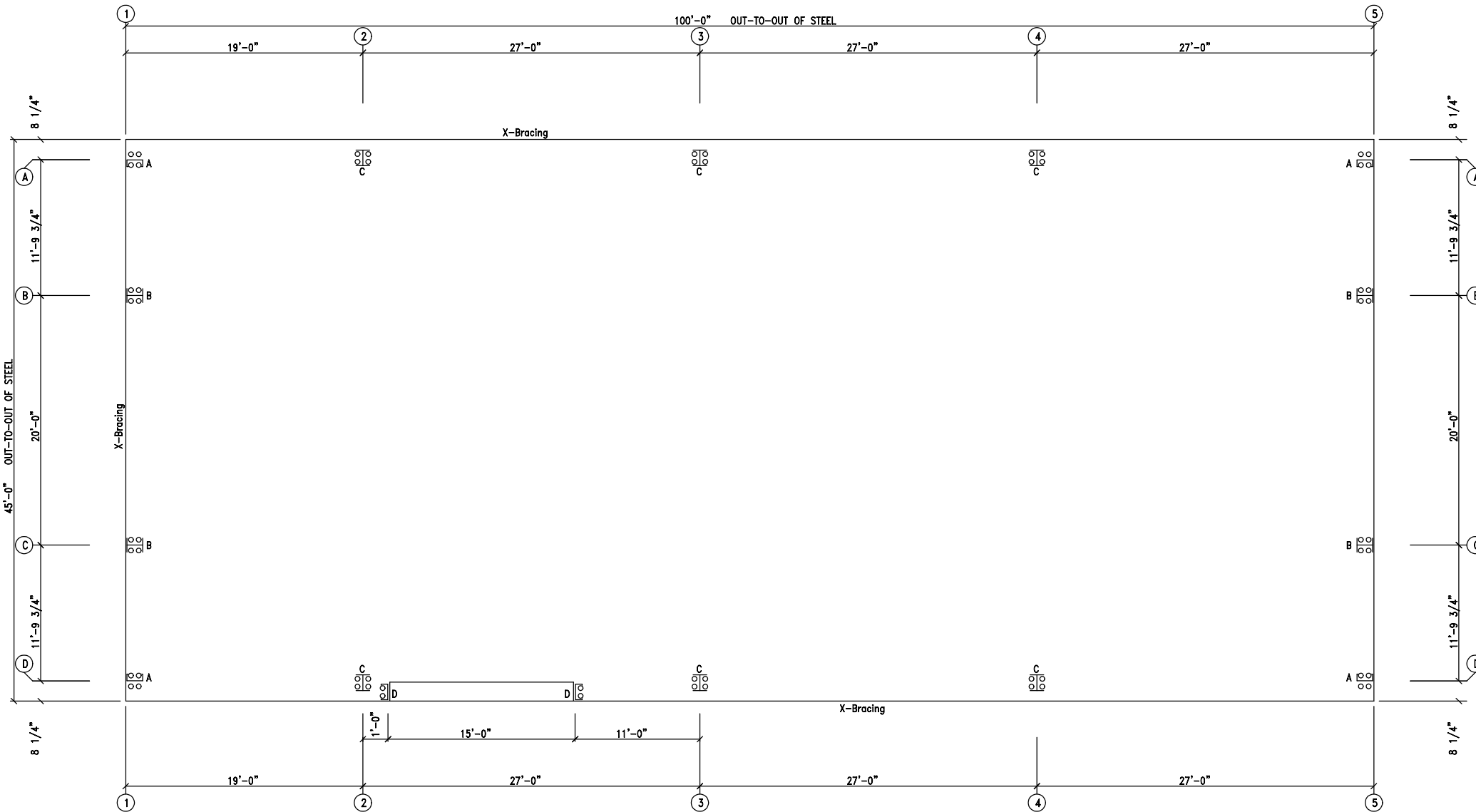
IMPORTANT NOTE: FINAL DETAILING, FABRICATION, AND DELIVERY DATE OF THIS PROJECT
CANNOT BE COMPLETED UNTIL THE SIGNED APPROVALS ARE RETURNED TO THE METAL
BUILDING MANUFACTURER.

△		
△		
△		
△		
△	8/14/22	FOR PERMIT
REV.	DATE	REVISION

PURCHASER: Ministerio Cristiano El Mesias

PROJECT: 45x100 Church

JOB NUMBER: Lakecitychurch



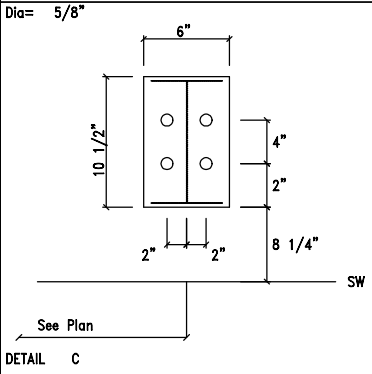
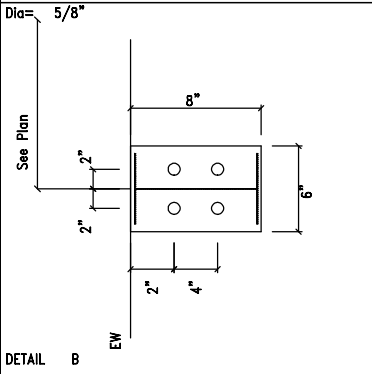
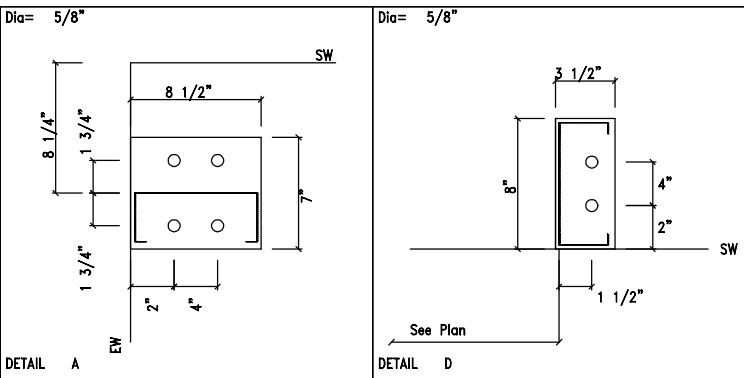
ANCHOR BOLT PLAN
NOTE: All Base Plates @ 100'-0" (U.N.)



08-17-2022



DESCRIPTION: ANCHOR BOLT PLAN						
CUSTOMER: Ministerio Cristiano El Mesias				PROJECT: 45x100 Church		
LOCATION:						
DRN. BY RT	CK'D BY RC	DATE 7/ 1/22	SCALE N.T.S.	REV. 00	QUOTATION NO. Lakecitychurch	SHEET NO. AB1 of AB3



DESCRIPTION: ANCHOR BOLT DETAILS						
CUSTOMER: Ministerio Cristiano El Mesias				PROJECT: 45x100 Church		
LOCATION:						
DRN. BY	CK'D BY	DATE	SCALE	REV.	QUOTATION NO.	SHEET NO.
RT	RC	7/ 1/22	N.T.S.	00	Lakecitychurch	AB2 of AB3

NOTES FOR REACTIONS

1. All loading conditions are examined and only maximum/minimum H or V and the corresponding H or V are reported.
2. Positive reactions are as shown in the sketch. Foundation loads are in opposite directions.
3. Bracing reactions are in the plane of the brace with the H pointing away from the braced bay. The vertical reaction is downward.
4. Building reactions are based on the following building data:

Width (ft)	=	45.0
Length (ft)	=	100.0
Eave Height (ft)	=	20.0/ 20.0
Roof Slope (ftw/12)	=	2.0/ 2.0
Dead Load (psf)	=	2.5
Collateral Load (psf)	=	0.5
Roof Live Load (psf)	=	20.0
Frame Live Load (psf)	=	12.0
Wind Speed (mph)	=	130.0
Wind Code	=	FBC 20 (IBC 18)
Exposure	=	B
Closed/Open	=	C
Importance Wind	=	1.00
Importance Seismic	=	1.25
Seismic Zone	=	B
Seismic Coeff (Fa/Sa)	=	0.14

5. Loading conditions are:

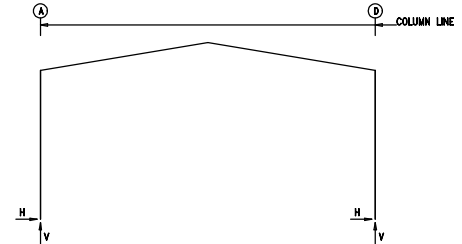
- 1 Dead+Collateral+Live
- 2 Dead+Collateral+0.75Live+0.45Wind_Left1
- 3 Dead+Collateral+0.75Live+0.45Wind_Right1
- 4 0.6Dead+0.6Wind_Left2
- 5 0.6Dead+0.6Wind_Right2
- 6 0.6Dead+0.6Wind_Long1L
- 7 0.6Dead+0.6Wind_Long2L
- 8 0.6Dead+0.6Wind_Suction+0.6Wind_Long1L
- 9 0.6Dead+0.6Wind_Pressure+0.6Wind_Long1L
- 10 0.6Dead+0.6Wind_Left1+0.6Wind_Suction
- 11 0.6Dead+0.6Wind_Right1+0.6Wind_Suction
- 12 0.6Dead+0.6Wind_Pressure+0.6Wind_Long2L
- 13 0.6Dead+0.6Wind_Suction+0.6Wind_Long2L

BUILDING BRACING REACTIONS

				± Reactions(k)		Panel Shear	
						(lb/ft)	
Wall	Col	Wind	Seismic	Wind	Seismic	Wind	Seismic
Line	Line	Horz	Vert	Horz	Vert	Wind	Seismic
L_EW	1	B,C	2.0	2.0	0.1	0.1	
F_SW	D	3,4	4.8	3.2	0.5	0.4	
R_EW	5						62
R_SW	A	3,2	4.8	3.2	0.5	0.4	12

NOTE: THE FRAMING AT BOTH ENDWALLS ARE NOT DESIGNED TO ACCOMMODATE FUTURE ADDITIONS. REACTIONS CORRESPONDING TO THESE FRAME LINES REFLECT LOADINGS FOR ACTUAL TRIBUTARY AREA AND ARE NOT INTENDED TO INCLUDE ANY FUTURE MODIFICATIONS UNLESS NOTED OTHERWISE.

FRAME LINES: 2 3 4



RIGID FRAME: MAXIMUM REACTIONS, ANCHOR BOLTS, & BASE PLATES

Frm Line	Col Line	Load Id	Hmax	Column_Reactions(k)		Load Id	Hmin	V	Bolt(In)	Dia	Base_Plate(In)	Thick	Grout (In)
				V	Vmax			Vmin					
2*	A	3	3.2	4.6	4	-4.4	-3.9	4	0.825	6.000	10.50	0.375	0.0
2*	D	1	2.2	10.0	6	1.4	-7.7	4	0.825	6.000	10.50	0.375	0.0
2*	D	5	4.4	-3.9	2	-3.2	4.6	4	0.825	6.000	10.50	0.375	0.0
2*	D	1	-2.2	10.0	7	-1.4	-7.7						

RIGID FRAME: BASIC COLUMN REACTIONS (k)

Frame Line	Column Line	Dead		Collateral		Live		Wind_Left1		Wind_Right1		Wind_Left2	
		Horz	Vert	Horz	Vert	Horz	Vert	Horz	Vert	Horz	Vert	Horz	Vert
2*	A	0.5	2.4	0.1	0.3	1.7	7.3	-6.7	-14.5	3.2	-7.9	-7.7	-8.9
2*	D	10.5	2.4	-0.1	0.3	-1.7	7.3	-3.2	-7.9	6.7	-14.5	-2.2	-3.3
Frame Line	Column Line	Wind_Right2		Wind_Long1		Wind_Long2		Seismic_Left		Seismic_Right		Seismic_Long	
		Horz	Vert	Horz	Vert	Horz	Vert	Horz	Vert	Horz	Vert	Horz	Vert
2*	A	2.2	-2.3	1.9	-15.2	1.1	-13.4	-0.1	-0.1	0.1	0.1	0.0	-0.4
2*	D	7.7	-8.9	-1.1	-13.4	-1.9	-15.2	-0.1	0.1	0.1	-0.1	0.0	-0.4

ENDWALL COLUMN: BASIC COLUMN REACTIONS (k)

Frm Line	Col Line	Dead Horz	Dead Vert	Collat Horz	Collat Vert	Live Horz	Live Vert	Wind_Left1		Wind_Right1		Wind_Left2		Wind_Right2		Wind Press	Wind Suct
								Horz	Vert	Horz	Vert	Horz	Vert	Horz	Vert		
1	A	0.2	0.0	0.8	0.0	-0.9	0.0	-0.8	0.0	-0.4	0.0	-0.3	-1.2	1.4			
1	B	0.8	0.1	3.6	-2.0	-6.5	0.0	-6.8	-2.0	-5.3	0.0	0.4	-3.3	3.6			
1	C	0.5	0.1	3.6	0.0	-0.8	2.0	-6.5	0.0	0.4	2.0	-5.3	-3.3	3.6			
1	D	0.2	0.0	0.8	0.0	-0.8	0.0	-0.9	0.0	-0.3	0.0	-0.4	-1.2	1.4			
5	D	0.2	0.0	1.1	0.0	-1.3	0.0	-0.7	0.0	-0.5	0.0	0.0	-1.2	1.4			
5	C	1.0	0.1	5.1	0.0	-6.0	0.0	-4.3	0.0	-4.2	0.0	-2.5	-3.3	3.6			
5	B	1.0	0.1	5.1	0.0	-4.3	0.0	-6.0	0.0	-2.5	0.0	-4.2	-3.3	3.6			
5	A	0.2	0.0	1.1	0.0	-0.7	0.0	-1.3	0.0	0.0	0.0	-0.5	-1.2	1.4			

Frm Line	Col Line	Wind_Long1		Wind_Long2		Seis_Left		Seis_Right		Seis Long	
		Horz	Vert	Horz	Vert	Horz	Vert	Horz	Vert	Horz	Vert
1	A	0.0	-1.4	0.0	-0.9	0.0	0.0	0.0	0.0	0.0	0.0
1	B	0.0	-3.6	-0.4	-3.0	-0.1	0.0	0.1	0.0	0.0	0.0
1	C	0.4	-3.0	0.0	-3.6	0.0	0.1	0.1	-0.1	0.0	0.0
1	D	0.0	-0.9	0.0	-1.4	0.0	0.0	0.0	0.0	0.0	0.0
5	D	0.0	-1.9	0.0	-1.2	0.0	0.0	0.0	0.0	0.0	0.0
5	C	0.0	0.0	-3.5	0.0	0.0	0.0	0.0	0.0	0.0	0.0
5	B	0.0	-3.4	0.0	-3.4	0.0	0.0	0.0	0.0	0.0	0.0
5	A	0.0	-1.2	0.0	-1.9	0.0	0.0	0.0	0.0	0.0	0.0

ENDWALL COLUMN: MAXIMUM REACTIONS, ANCHOR BOLTS, & BASE PLATES

Frm Line	Col Line	Load Id	Hmax	Column_Reactions(k)		Load Id	Hmin	V	Bolt(In)	Dia	Base_Plate(In)	Thick	Grout (In)
				V	Vmax			Vmin					
1	A	8	0.8	-0.7	9	-0.7	-0.7	4	0.825	7.000	8.500	0.250	0.0
1	B	10	2.2	-3.4	9	-2.0	-1.7	4	0.825	6.000	8.000	0.375	0.0
1	C	11	2.2	-3.4	12	-2.0	-1.7	4	0.825	6.000	8.000	0.375	0.0
1	D	13	0.8	-0.7	12	-0.7	-0.7	4	0.825	7.000	8.500	0.250	0.0
5	D	8	0.8	-1.0	9	-0.7	-1.0	4	0.825	7.000	8.500	0.250	0.0
5	C	10	2.2	-3.0	9	-2.0	-2.7	4	0.825	6.000	8.000	0.375	0.0
5	B	11	2.2	-3.0	12	-2.0	-2.7	4	0.825	6.000	8.000	0.375	0.0
5	A	13	0.8	-1.0	12	-0.7	-1.0	4	0.825	7.000	8.500	0.250	0.0

ANCHOR BOLT SUMMARY

Qty	Locate	Dia (In)	Type	Bend Len (In)	Prod (In)
4	Jamb	5/8"	A307	3.00	2.50
32	Endwall	5/8"	A307	3.00	2.50
24	Frame	5/8"	A307	3.00	2.50

DESCRIPTION: ANCHOR BOLT REACTIONS

CUSTOMER: Ministerio Cristiano El Mesias				PROJECT: 45x100 Church			
LOCATION:							
DRN. BY	CK'D BY	DATE	SCALE	REV.	QUOTATION NO.	SHEET NO.	
RT	RC	7/ 1/22	N.T.S.	00	Lakecitychurch	AB3 of AB	



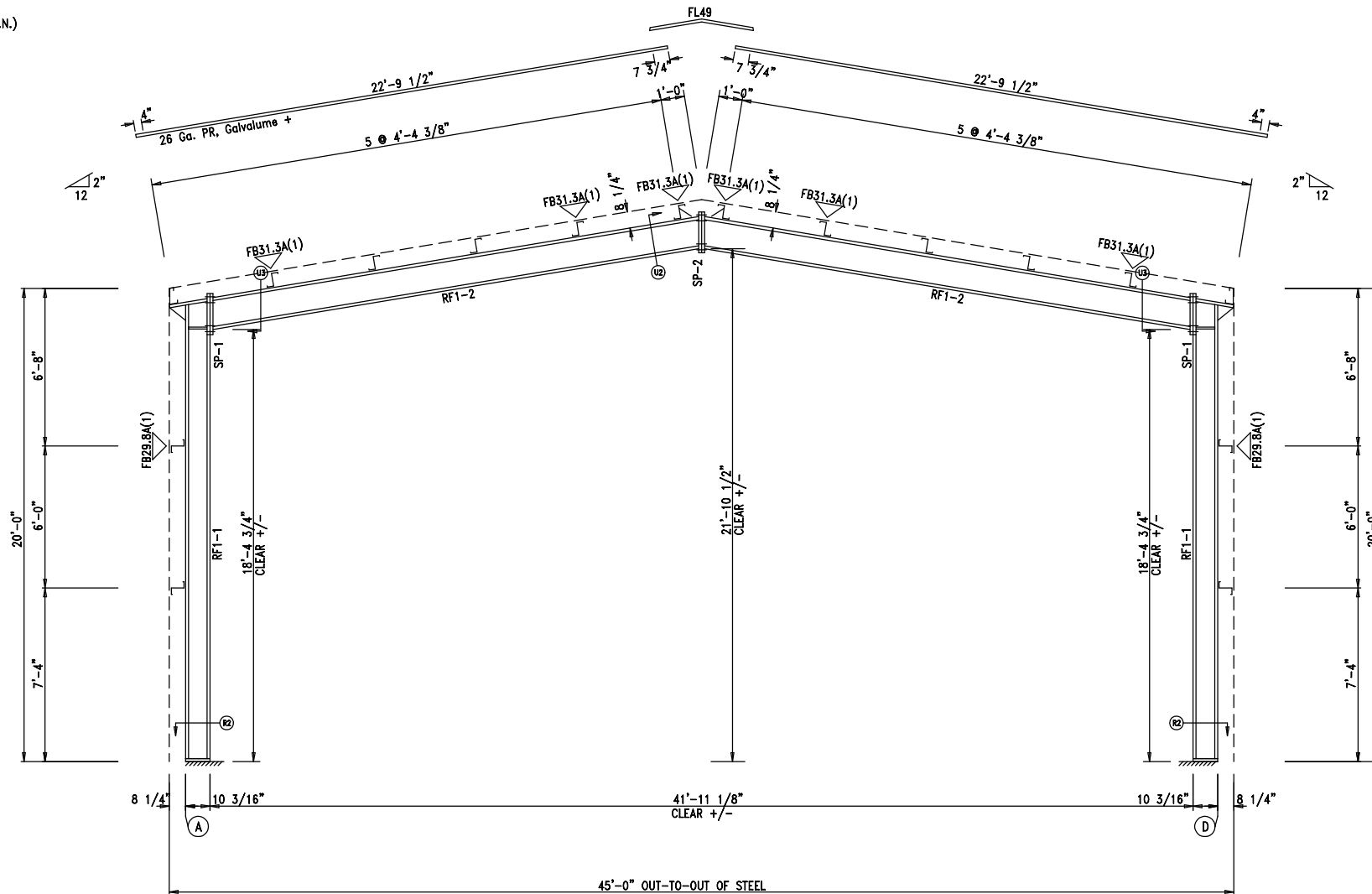
08-17-2022



SPICE PLATE & BOLT TABLE									
Mark	Qty	Top	Bot	Int	Type	Dia	Length	Width	Thick
SP-1	4	4	0		A325	0.750	2.00	6"	1 1/2"
SP-2	4	4	0		A325	0.750	2.00	6"	1 1/2"


MEMBER SIZE TABLE			
MARK	MEMBER	LENGTH	WEIGHT
RF1-1	W10X19	19'-5"	414
RF1-2	W14X22	21'-3"	516

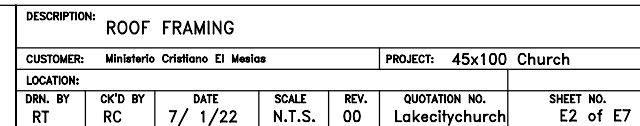
FLANGE BRACES: Both Sides(U.N.)
 FBxxA(1): xx=length(in)
 A - FB15X1/8



RIGID FRAME ELEVATION: FRAME LINE 2 3 4

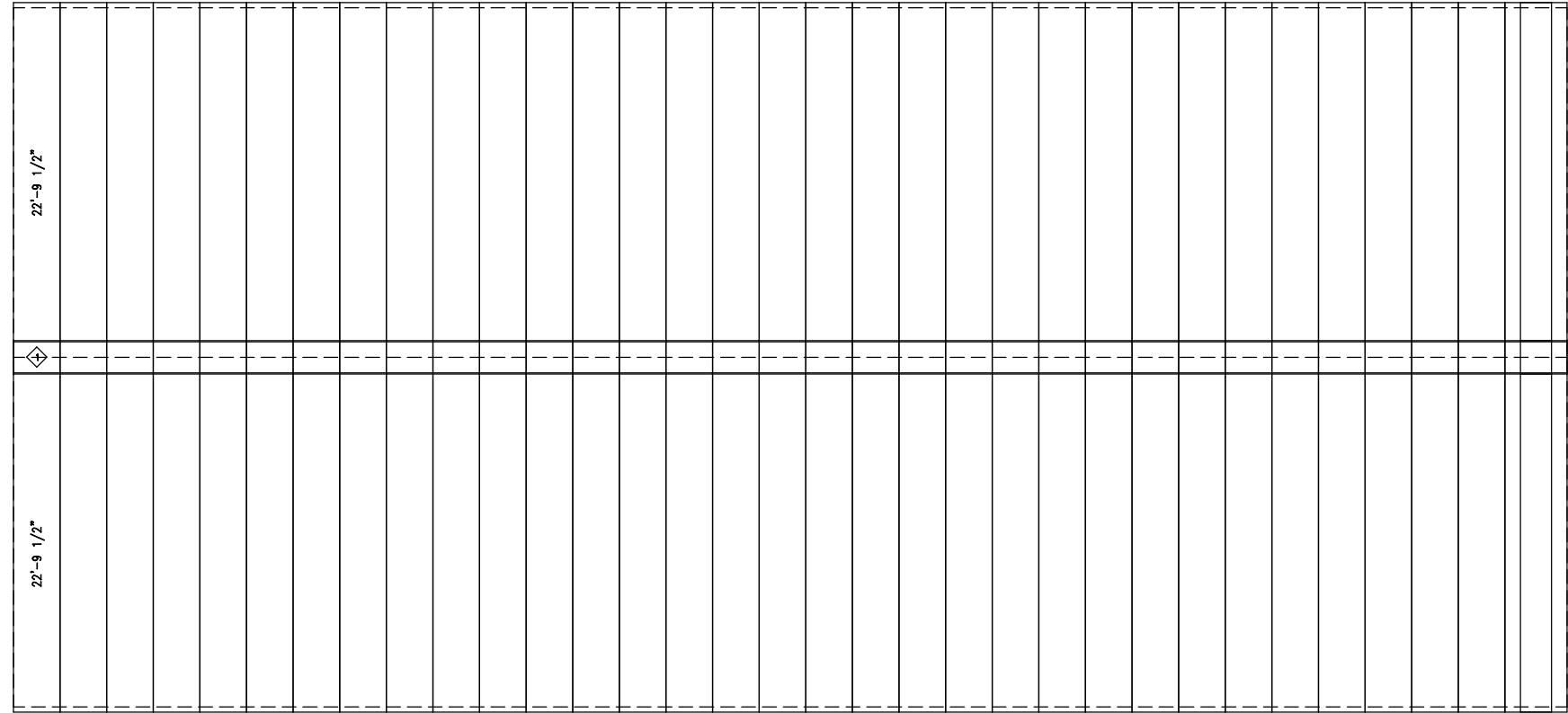
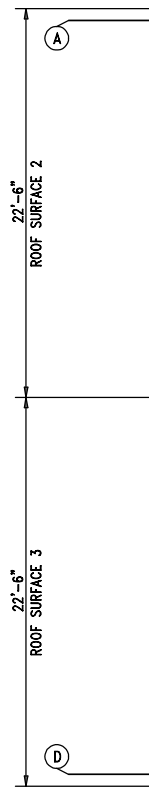
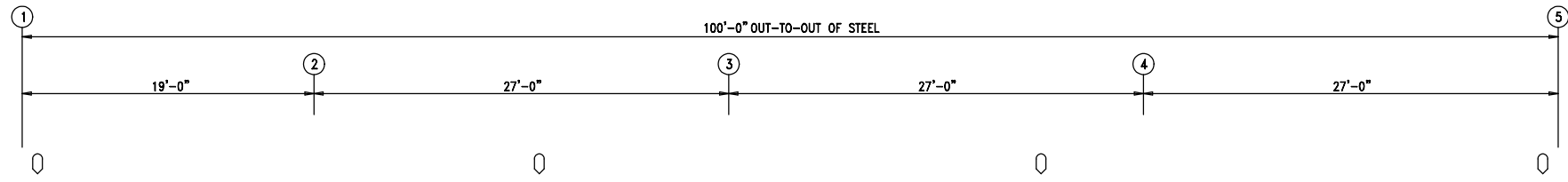


		DESCRIPTION: RIGID FRAME ELEVATION	
		CUSTOMER: Ministerio Cristiano El Mesias	PROJECT: 45x100 Church
LOCATION:		DRN. BY: RT	CK'D BY: RC
		DATE: 7/ 1/22	SCALE: N.T.S.
		REV: 00	QUOTATION NO. Lakecitychurch
		SHEET NO. E1 of E7	



0 DOWNSPOUT LOCATIONS

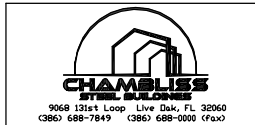
TRIM TABLE			
ROOF PLAN			
ID	PART	LENGTH	DETAIL
1	FL49	3'-0"	TRIM_320



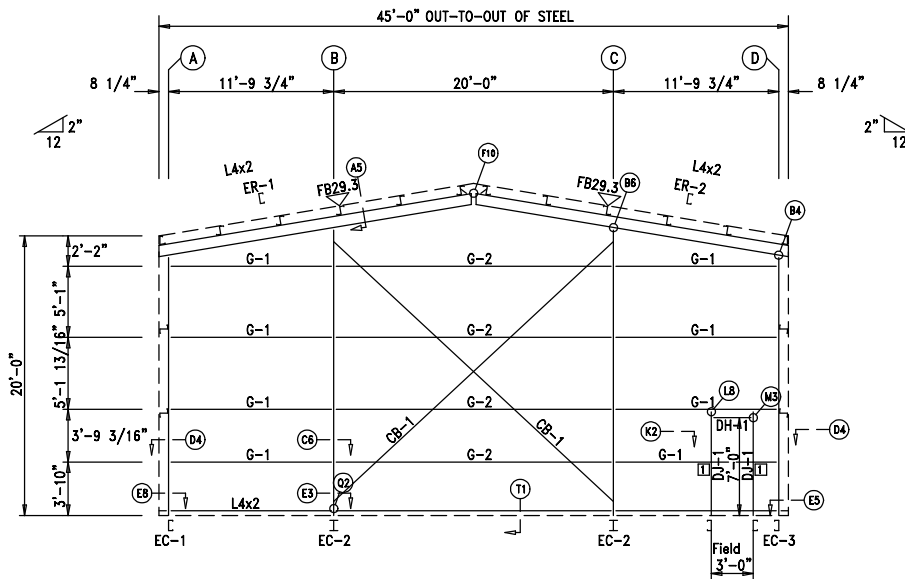
ROOF SHEETING PLAN
PANELS: 26 Ga. PR - Galvalume +



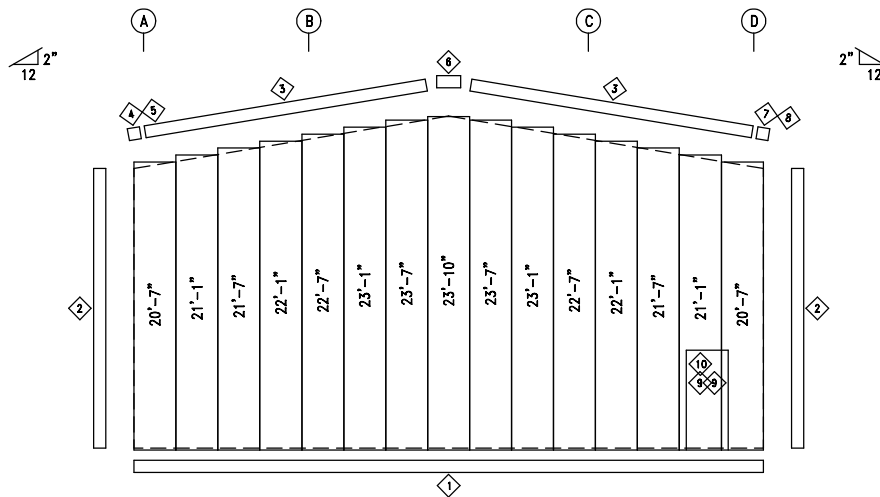
08-17-2022



DESCRIPTION: ROOF SHEETING						
CUSTOMER: Ministerio Cristiano El Mesias				PROJECT: 45x100 Church		
LOCATION:						
DRN. BY	CK'D BY	DATE	SCALE	REV.	QUOTATION NO.	SHEET NO.
RT	RC	7/ 1/22	N.T.S.	00	Lakecitychurch	E3 of E7



ENDWALL FRAMING: FRAME LINE 1



ENDWALL SHEETING & TRIM: FRAME LINE 1
PANELS: 26 Ga. PR - NEED SIG 200

BOLT TABLE FRAME LINE 1				
LOCATION	QUAN	TYPE	DIA	LENGTH
ER-1/ER-2	4	A325	5/8"	1 3/4"
Columns/Raf	2	A325	5/8"	2"

TRIM TABLE FRAME LINE 1			
ID	PART	LENGTH	DETAIL
1	FL72	10'-2"	TRIM_74
2	FL835	20'-2"	TRIM_198
3	FL16D	20'-2"	TRIM_229
4	FL16M	10'-2"	
5	FL16A	6"	
6	FL16B	1'-4"	
7	FL16M	10'-2"	
8	FL16A	6"	
9	FL22	7'-3"	TRIM_239
10	FL24	3'-6"	TRIM_232

MEMBER TABLE FRAME LINE 1		
MARK	PART	LENGTH
EC-1	8X35c14	18'-6 7/8"
EC-2	W8X10	20'-6 1/2"
EC-3	8X35c14	18'-6 7/8"
ER-1	8X35c12	22'-9 1/2"
ER-2	8X35c12	22'-9 1/2"
DJ-1	8X35c14	7'-7 3/16"
DH-1	8X25c16	3'-0"
G-1	8X25Z16	11'-1 3/4"
G-2	8X25Z16	19'-4"
CB-1	HW373	27'-9"

FLANGE BRACE TABLE FRAME LINE 1		
ID	MARK	LENGTH
1	FB29.3	2'-5 1/4"

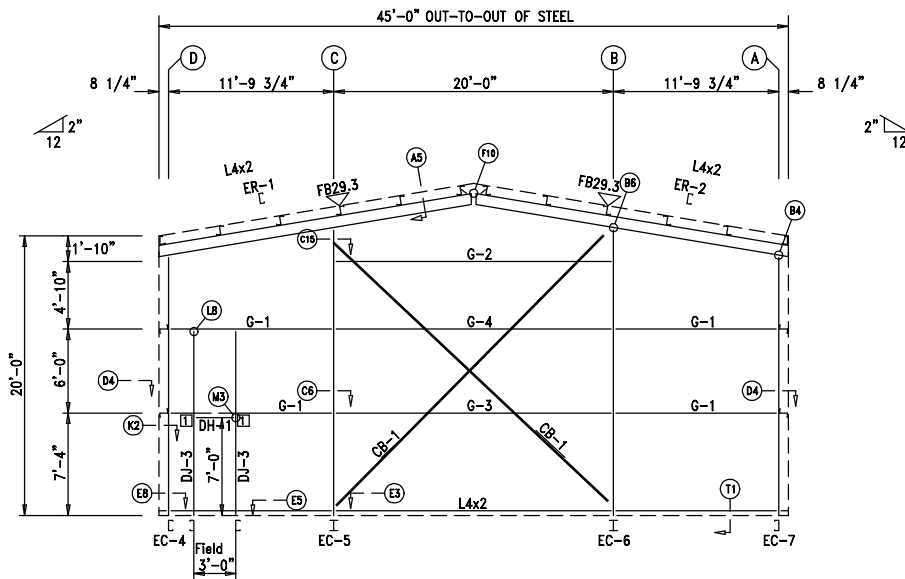
CONNECTION PLATES FRAME LINE 1		
ID	MARK/PART	
1	b1	



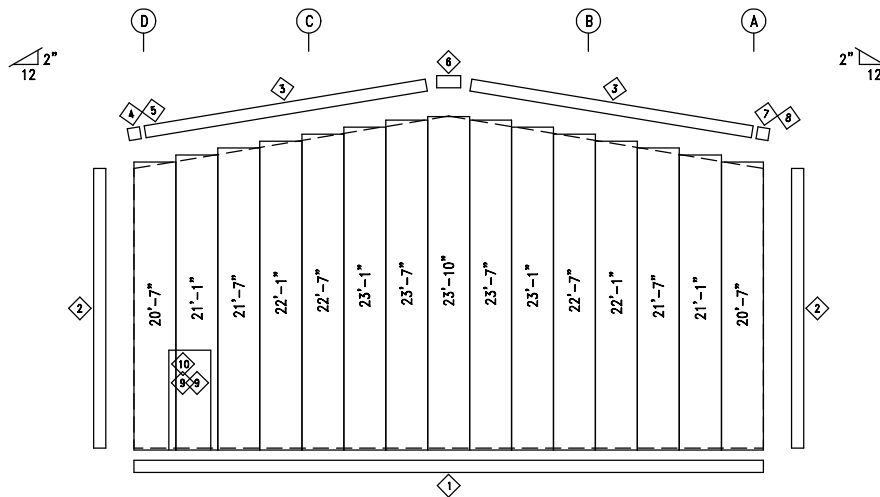
NOTE: THE FRAMING AS DEPICTED ABOVE IS NOT DESIGNED TO ACCOMMODATE ANY FUTURE EXPANSION.

9668 131st Loop Live Oak, FL 32060
(386) 688-7849 (386) 688-0000 (Fax)

DESCRIPTION: ENDWALL FRAMING					
CUSTOMER: Ministerio Cristiano El Mesias			PROJECT: 45x100 Church		
LOCATION:					
DRN. BY	CK'D BY	DATE	SCALE	REV.	QUOTATION NO.
RT	RC	7/ 1/22	N.T.S.	00	Lakecitychurch
					SHEET NO. E4 of E7



ENDWALL FRAMING: FRAME LINE 5



ENDWALL SHEETING & TRIM: FRAME LINE 5

PANELS: 26 Ga. PR - NEED SIG 200

NOTE: THE FRAMING AS DEPICTED ABOVE IS NOT DESIGNED TO ACCOMMODATE ANY FUTURE EXPANSION.

6

BOLT TABLE FRAME LINE 5				
LOCATION	QUAN	TYPE	DIA	LENGTH
ER-1/ER-2	4	A325	5/8"	1 3/4"
Columns/Raf	2	A325	5/8"	2"

TRIM TABLE FRAME LINE 5			
ID	PART	LENGTH	DETAIL
1	FL72	10'-2"	TRIM_74
2	FL835	20'-2"	TRIM_198
3	FL16D	20'-2"	TRIM_229
4	FL16M	10'-2"	
5	FL16A	6"	
6	FL16B	1'-4"	
7	FL16M	10'-2"	
8	FL16A	6"	
9	FL22	7'-3"	TRIM_239
10	FL24	3'-6"	TRIM_232

MEMBER TABLE FRAME LINE 5		
MARK	PART	LENGTH
EC-4	8X35c14	18'-6 7/8"
EC-5	W8X10	20'-6 1/2"
EC-6	W8X10	20'-6 1/2"
EC-7	8X35c14	18'-6 7/8"
ER-1	8X35c12	22'-9 1/2"
ER-2	8X35c12	22'-9 1/2"
DJ-3	8X35c14	13'-4 1/2"
DH-1	8X25Z16	3'-0"
G-1	8X25Z16	11'-1 3/4"
G-2	8X25Z16	19'-4"
G-3	8X25Z12	19'-4"
G-4	8X25Z14	19'-4"

FLANGE BRACE TABLE FRAME LINE 5		
ID	MARK	LENGTH
1	FB29.3	2'-5 1/4"

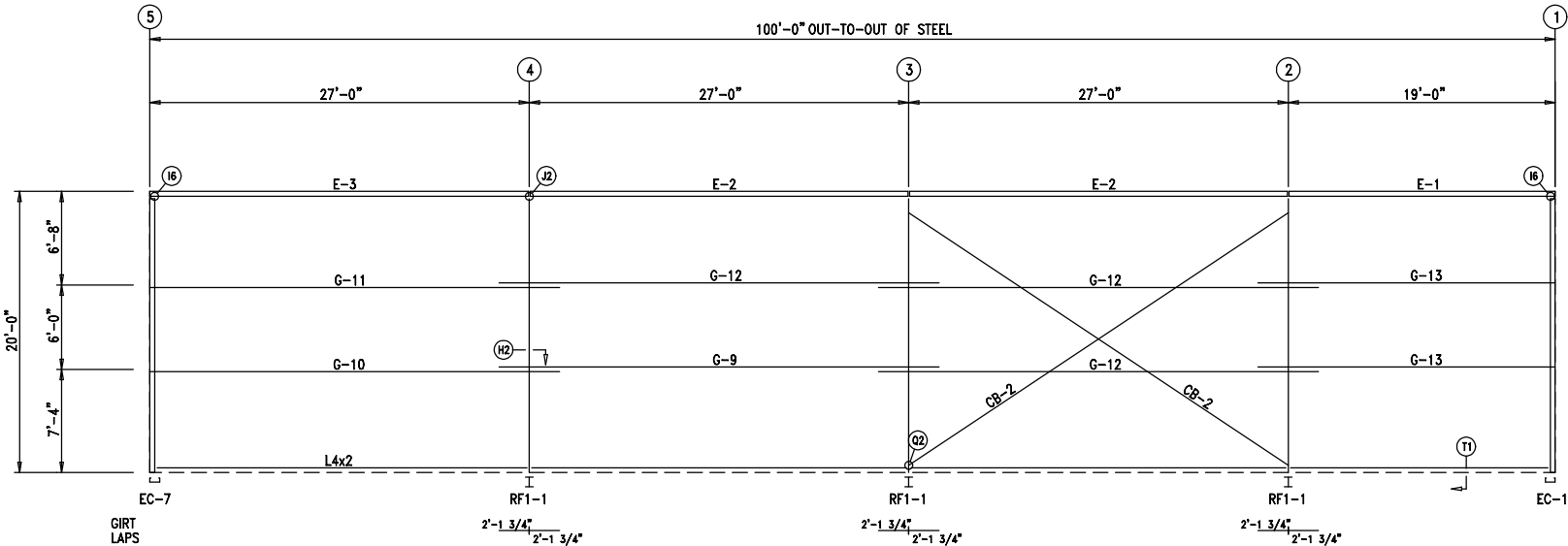
CONNECTION PLATES FRAME LINE 5		
ID	MARK/PART	
1	b1	



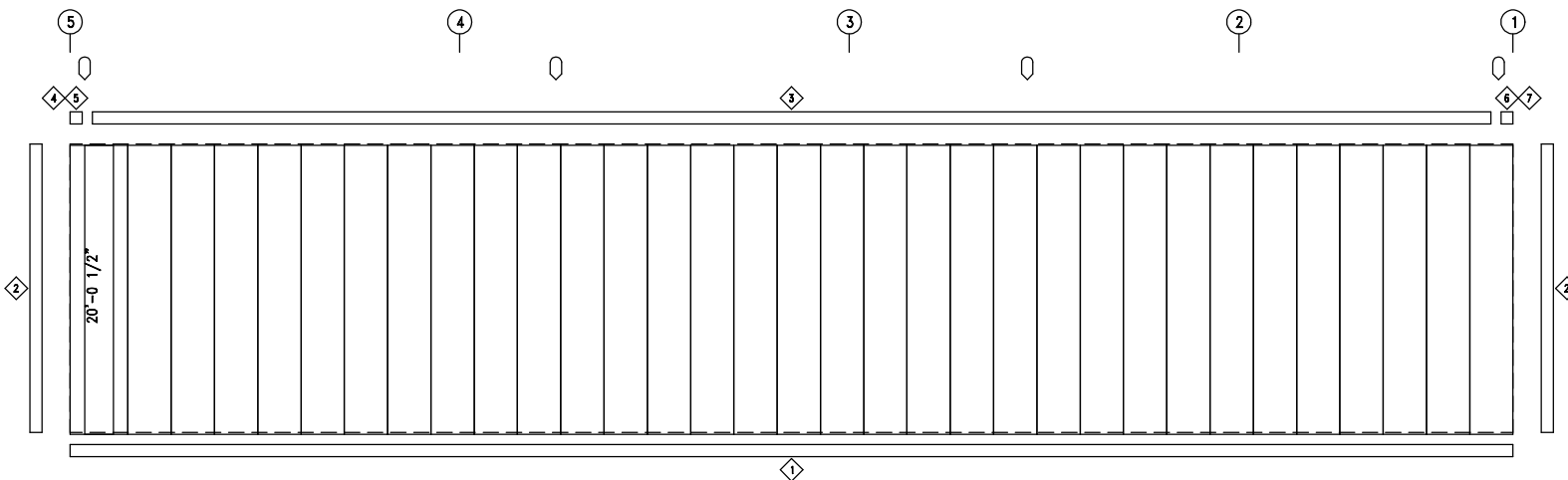
08-17-2022

 9068 131st Loop Live Oak, FL 32060 (386) 688-7849 (386) 688-0000 (Fax)		DESCRIPTION: ENDWALL FRAMING	
		CUSTOMER: Ministerio Cristiano El Mesias	PROJECT: 45x100 Church
LOCATION:		QUOTATION NO. Lakecitychurch	
DRN. BY	CK'D BY	DATE	SHEET NO.
RT	RC	7/ 1/22	E5 of E7

DOWNSPOUT LOCATIONS



SIDEWALL FRAMING: FRAME LINE A




SIDEWALL SHEETING & TRIM: FRAME LINE A
PANELS: 26 Ga. PR - NEED SIG 200

TRIM TABLE			
FRAME LINE A			
ID	PART	LENGTH	DETAIL
1	FL72	10'-2"	TRIM_74
2	FL835	20'-2"	TRIM_198
3	FL18B	20'-2"	
4	FL18M	10'-2"	
5	FL18A	6"	
6	FL18M	10'-2"	
7	FL18A	6"	

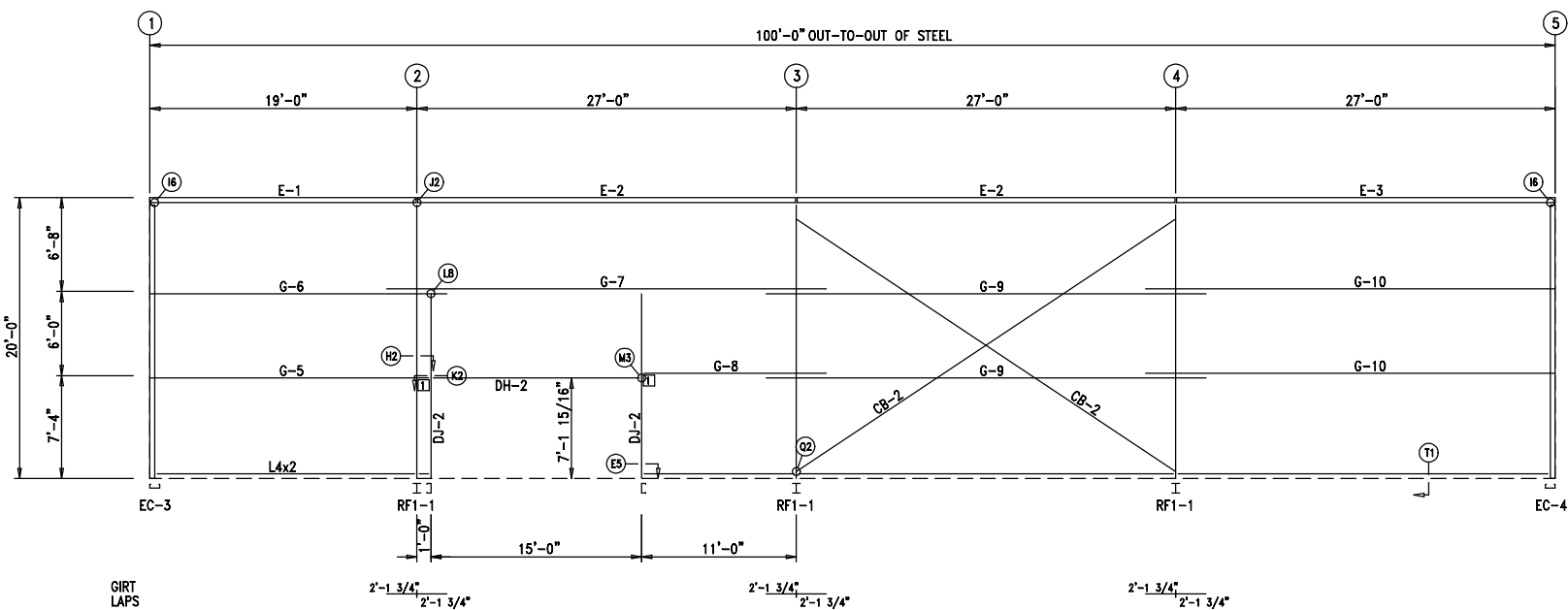
MEMBER TABLE		
FRAME LINE A		
MARK	PART	LENGTH
E-1	E085342L	18'-11 1/2"
E-2	E085342L	26'-11 1/2"
E-3	E085342L	26'-11 1/2"
G-9	8X25Z14	31'-3 1/2"
G-10	8X25Z12	29'-1 1/2"
G-11	8X25Z14	29'-1 1/2"
G-12	8X25Z16	31'-3 1/2"
G-13	8X25Z16	21'-1 1/2"
CB-2	HW374	33'-2 3/4"



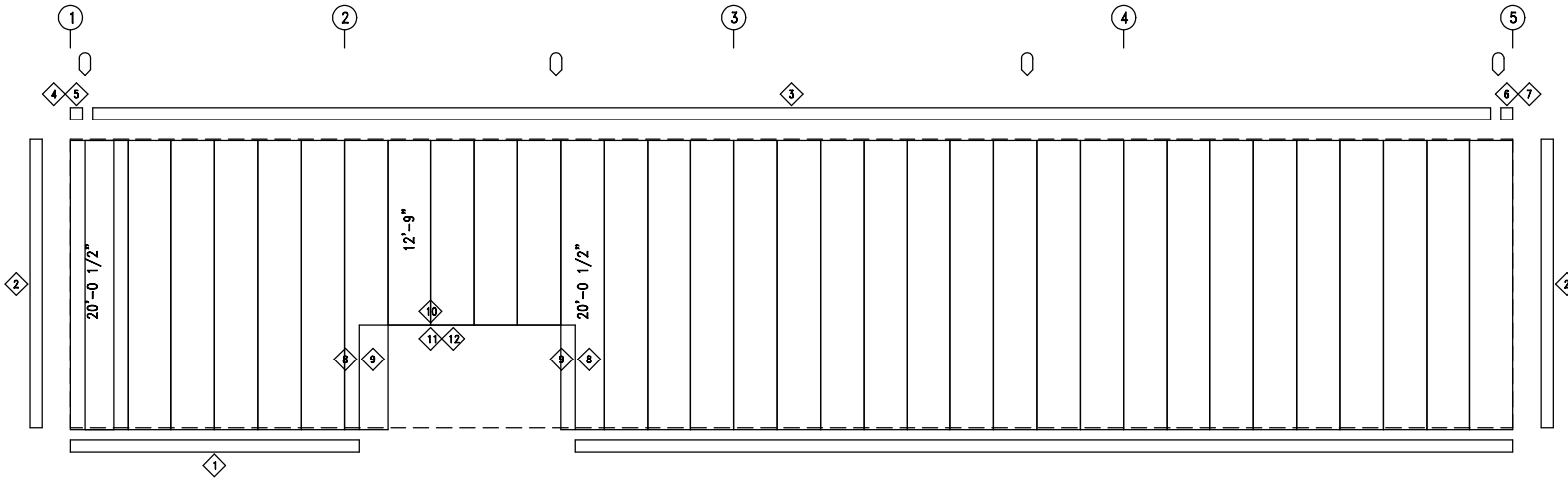
08-17-2022

 9068 131st Loop Live Oak, FL 32060 (386) 688-7849 (386) 688-0000 (Fax)	DESCRIPTION: SIDEWALL FRAMING						
	CUSTOMER: Ministerio Cristiano El Mesias				PROJECT: 45x100 Church		
	LOCATION:						
	DRN. BY	CK'D BY	DATE	SCALE	REV.	QUOTATION NO.	SHEET NO.
RT	RC	7/ 1/22	N.T.S.	00	Lakecitychurch	E6 of E7	

DOWNSPPOUT LOCATIONS



SIDEWALL FRAMING: FRAME LINE D



SIDEWALL SHEETING & TRIM: FRAME LINE D
PANELS: 26 Ga. PR - NEED SIG 200


TRIM TABLE FRAME LINE D			
ID	PART	LENGTH	DETAIL
1	FL72	10'-2"	TRIM_74
2	FL835	20'-2"	TRIM_198
3	FL18B	20'-2"	
4	FL18M	10'-2"	
5	FL18A	6"	
6	FL18M	10'-2"	
7	FL18A	6"	
8	FL37	10'-2"	TRIM_242
9	FL23	10'-2"	TRIM_239
10	FL37	10'-2"	TRIM_235
11	FL25	7'-1"	TRIM_232
12	FL26	10'-4"	TRIM_232

MEMBER TABLE FRAME LINE D		
MARK	PART	LENGTH
DJ-2	8X35c14	13'-4"
DH-2	8X25c16	15'-0"
E-1	E085342L	18'-11 1/2"
E-2	E085342L	26'-11 1/2"
E-3	E085342L	26'-11 1/2"
G-5	8X25Z14	19'-8"
G-6	8X25Z16	21'-1 1/2"
G-7	8X25Z12	31'-3 1/2"
G-8	8X25Z16	12'-10"
G-9	8X25Z14	31'-3 1/2"
G-10	8X25Z12	29'-1 1/2"
CB-2	HW374	33'-2 3/4"

CONNECTION PLATES FRAME LINE D	
ID	MARK/PART
1	b1



08-17-2022



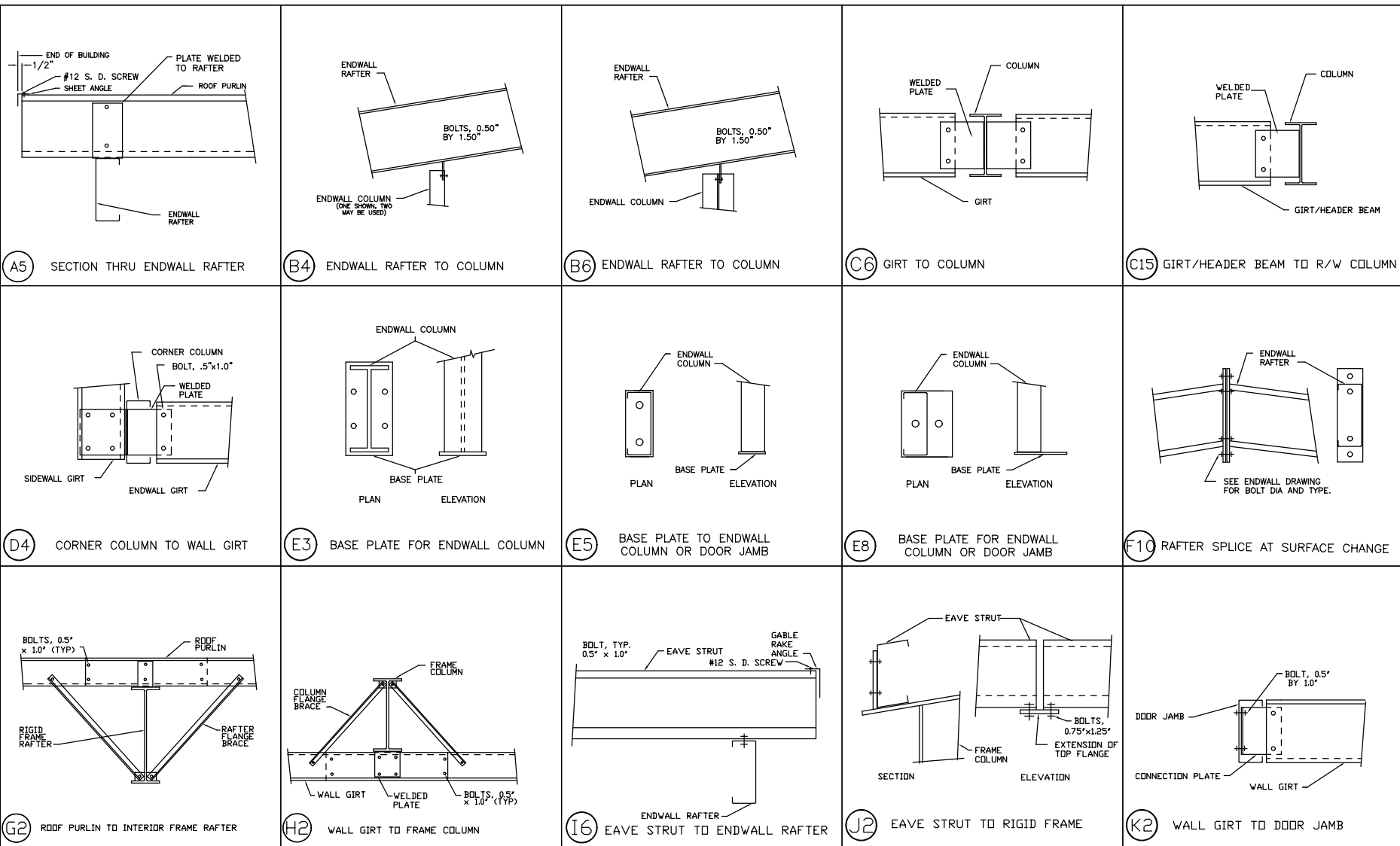
9068 131st Loop Live Oak, FL 32060
(386) 688-7849 (386) 688-0000 (Fax)

DESCRIPTION: SIDEWALL FRAMING

CUSTOMER: Ministerio Cristiano El Mesias PROJECT: 45x100 Church

LOCATION:

DRN. BY	CK'D BY	DATE	SCALE	REV.	QUOTATION NO.	SHEET NO.
RT	RC	7/ 1/22	N.T.S.	00	Lakecitychurch	E7 of E7



DESCRIPTION: DETAIL DRAWINGS

CUSTOMER: Ministerio Cristiano El Mesias

PROJECT: 45x100 Church

LOCATION:

DRN. BY
RT

CK'D BY
RC

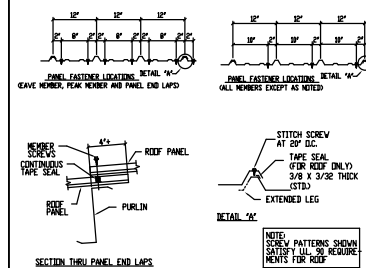
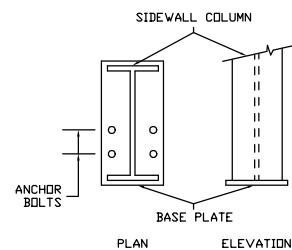
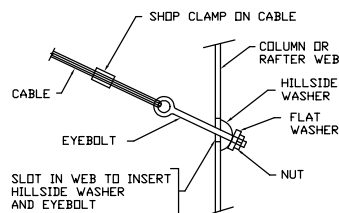
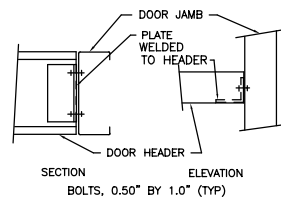
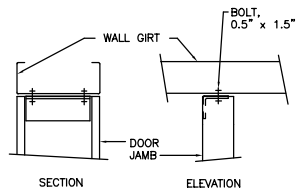
DATE
7/ 1/22

SCALE
N.T.S.

REV.
00

QUOTATION NO.
Lakecitychurch

SHEET NO.
S1 of S3

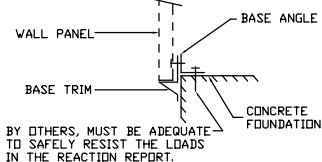
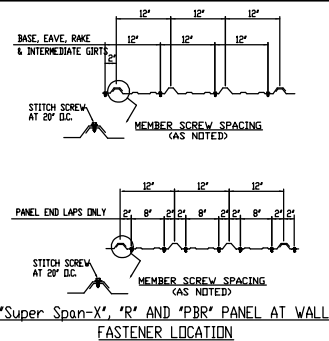


(L8) DOOR JAMB TO WALL GIRT

(M3) DOOR HEADER TO DOOR JAMB

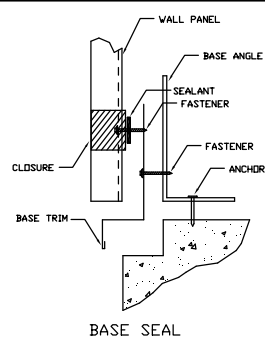
(Q2) DIAGONAL CABLE, EYEBOLT END

(R2) ANCHOR BOLTS AT SIDEWALL COLUMN

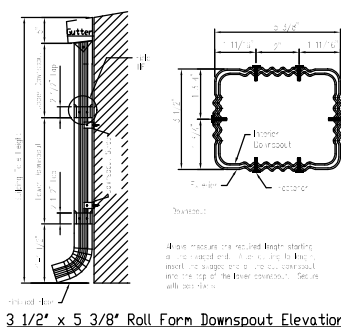


SCREW 5

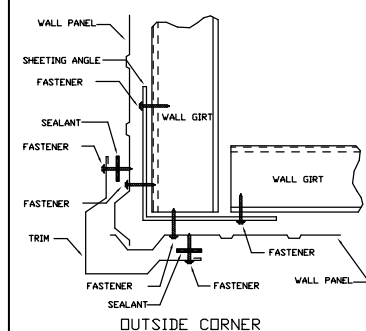
T1 SECTION THRU WALL PANEL
AND CONCRETE FOUNDATION



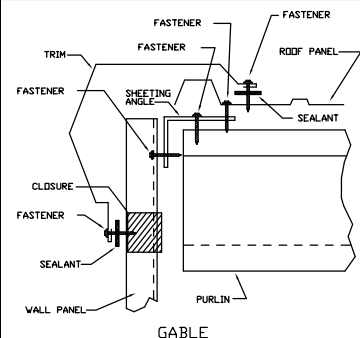
TRIM 74



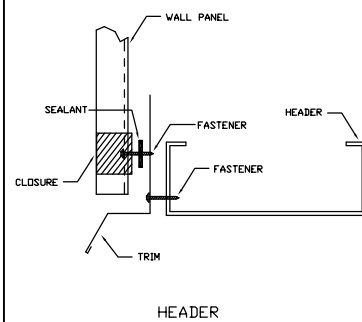
TRIM 175



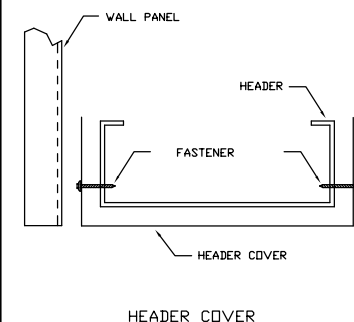
TRIM 198



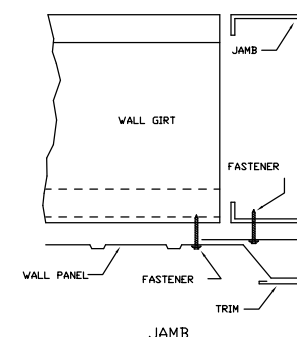
TRIM_229



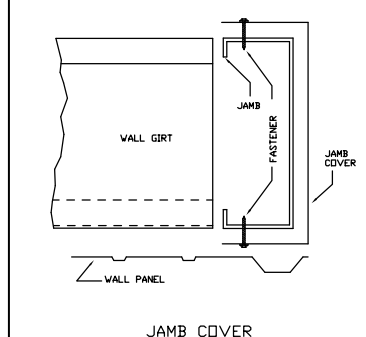
TRIM_232



TRIM_235



TRIM_239



TRIM_242



08-17-2022



DESCRIPTION:	DETAIL DRAWINGS
--------------	-----------------

CUSTOMER: Ministerio Cristiano El Mesias

PROJECT:	45x100 Church
----------	---------------

LOCATION:

DRN. BY	
RT	

CK'D BY	
RC	

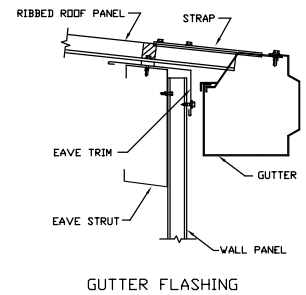
DATE
7/ 1/22

SCALE
N.T.S.

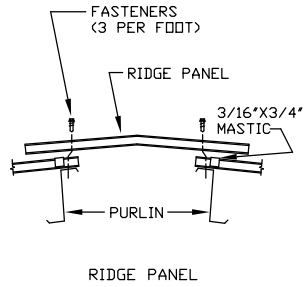
REV.	00
------	----

	QUOTATION NO. Lakecitychurch
--	---------------------------------

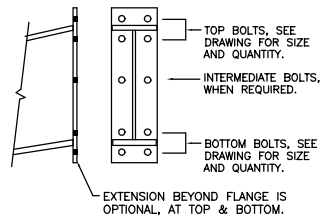
SHEET NO.
S2 of S3



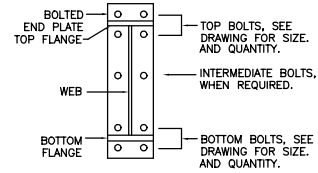
TRIM_317



TRIM_320




U2 BOLTED END PLATE CONNECTION AT BUILDING PEAK



U3 BOLTS FOR RAFTER TO COLUMN CONNECTION



08-17-2022

 9068 121st Loop Live Dale, FL 32060 (386) 686-7849 (386) 686-0000 (fax)	DESCRIPTION:		DETAIL DRAWINGS				
	CUSTOMER:			Ministerio Cristiano El Mesias		PROJECT: 45x100 Church	
	LOCATION:						
	DRN. BY	CK'D BY	DATE	SCALE	REV.	QUOTATION NO.	SHEET NO.
RT	RC	7/ 1/22	N.T.S.	00	Lakecitychurch	S3 of S3	