

Current 

5K Modules Required



Dollar General Market #25861

E14441

Fort White, FL

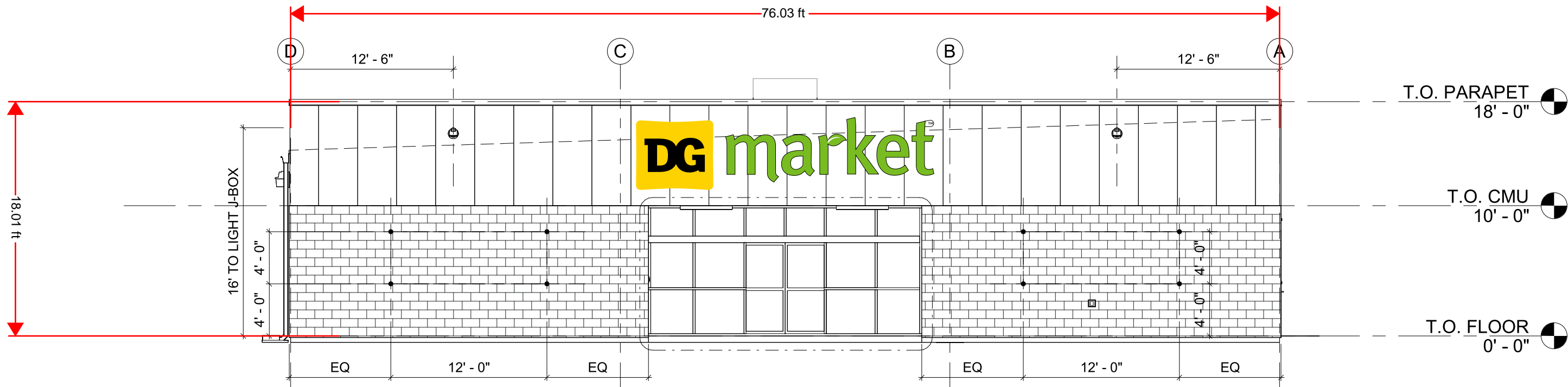
May 15, 2024



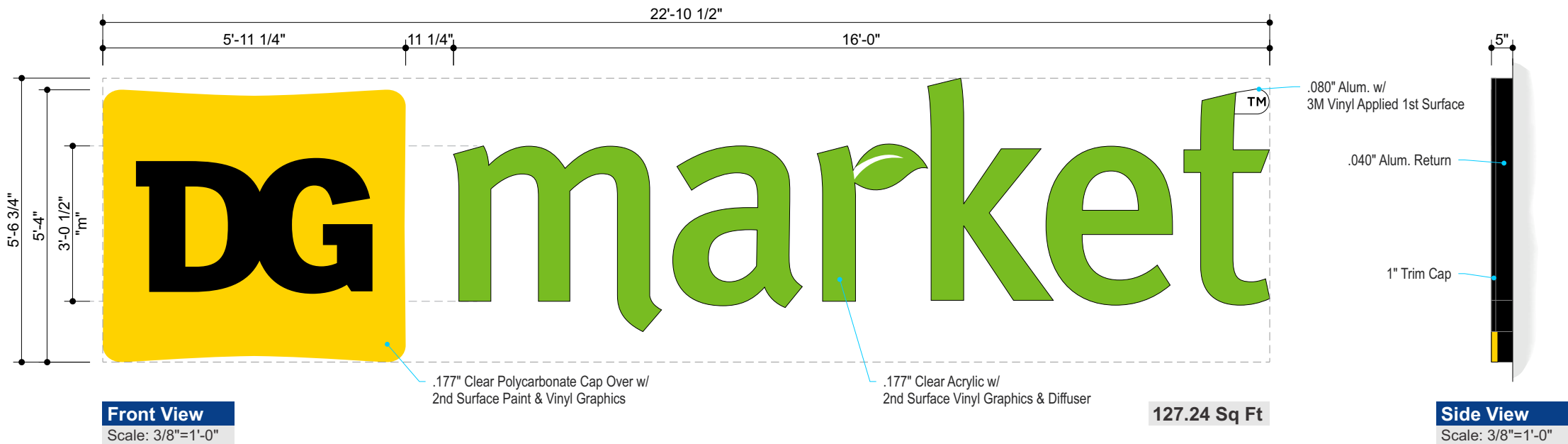
YOUR BRAND AT ITS BEST™

1-800-967-2553
www.allenindustries.com

Customer Approval / Signature	
Signature: _____	Date: _____



Front Elevation
Scale: 1/8"=1'-0"



Night View
Scale: 1/4"=1'-0"

Color Specifications

- Black Trim Cap

Vinyl Specifications

- 3M 3630-136 Lime Green (translucent vinyl)
- 3M 3630-015 Yellow (translucent vinyl)
- 3M 3635-30 White (diffuser film)
- 3M 3630-22 Black (translucent vinyl)
- 3M 3630-20 White (translucent vinyl)

Paint Specifications

- Paint to Match Pantone 109 C

All paint finishes to be Satin unless otherwise specified

General Specifications	
Face:	"market" .177" Clear Acrylic w/ 2nd Surface Vinyl & Diffuser w/ 1" Black Trim Cap "DG" .177" Clear Polycarbonate Cap Over w/ 2nd Surface Paint & Vinyl
Returns:	5" x .040" Alum. Coil Stock - Pre-Finished Black (Gloss)
Backs:	3mm ACM - Pre-Finished White
Illum:	White LEDs as Required by Manufacturer, Remote Power Supplies
Electrical:	Actual # of Circuits to be Determined by Licensed Electrical Contractor (1) 20 AMP Circuit, 120 Volts
Wall Type:	TBD
Install:	Channel letters to be installed using min. 3/8" all thread fasteners (or approved equivalent) and wood blocking as required
Quantity:	(1) ONE

Allen Industries
FILE NUMBER: E212503

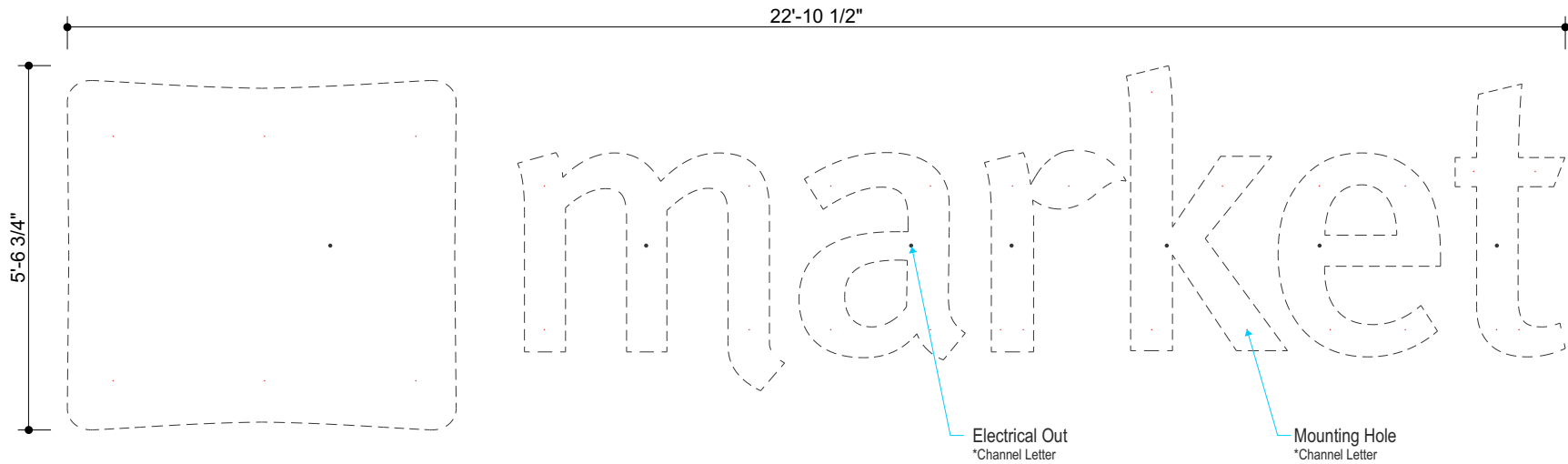
Listed (MET) E212503
Electric Sign Complies with UL48

THIS SIGN IS INTENDED TO BE INSTALLED IN ACCORDANCE WITH THE REQUIREMENTS OF ARTICLE 600 OF THE NATIONAL ELECTRICAL CODE AND/OR OTHER APPLICABLE LOCAL CODES. THIS INCLUDES PROPER GROUNDING AND BONDING OF THE SIGN.

GROUNDED ELECTRICAL CONNECTIONS

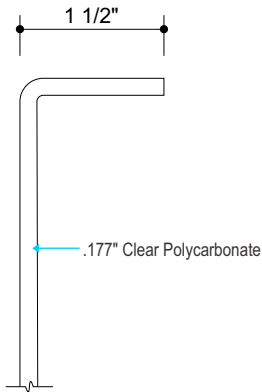
#	Date	Description	Initial
1	5/15/24	Change pylon to monument	LB
2	-	-	-
3	-	-	-
4	-	-	-
5	-	-	-
6	-	-	-

Client Review Status	
Allen Industries, Inc. requires that an approved drawing be obtained from the client prior to any production release or production release revision.	
Client Signature:	Approval Date:



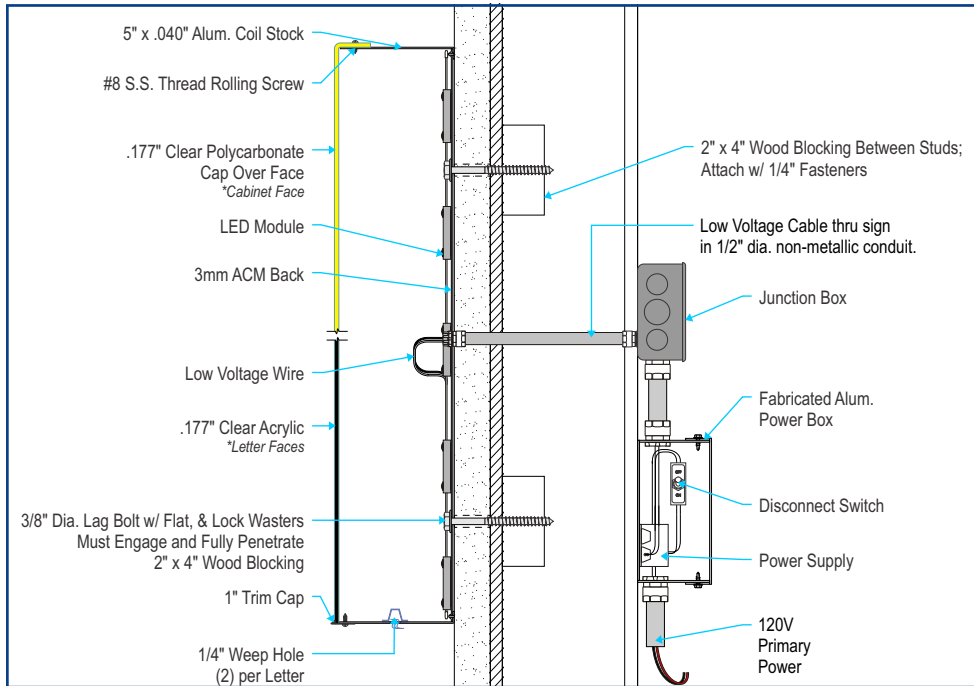
Front Detail

Scale: 3/8"=1'-0"



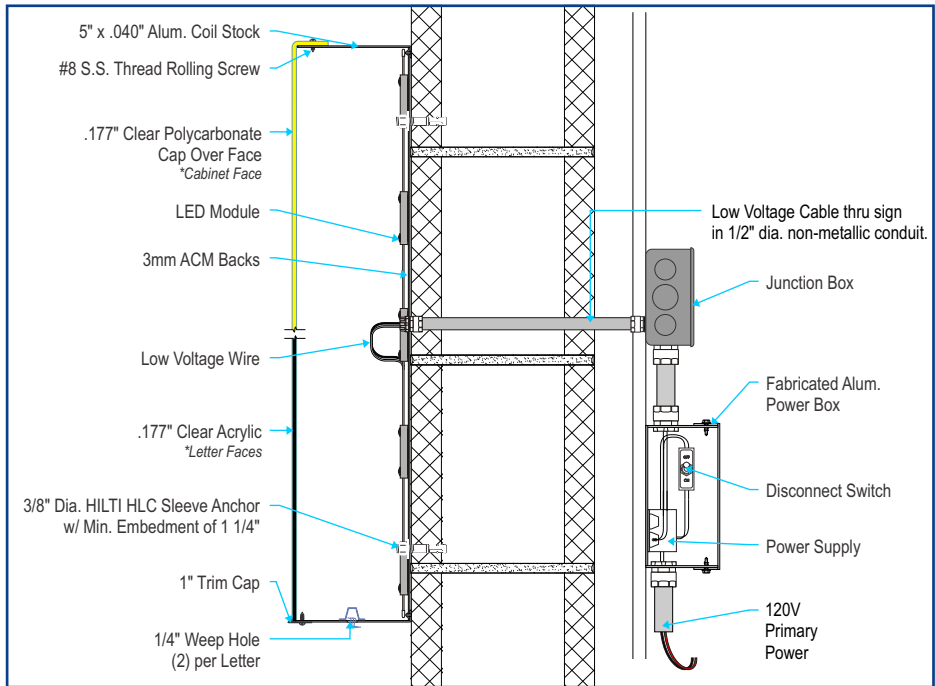
Cap Over Detail

Scale: 6"=1'-0"



Mounting Detail - Framed

Scale: 1 1/2"=1'-0"



Mounting Detail - Masonry

Scale: 1 1/2"=1'-0"

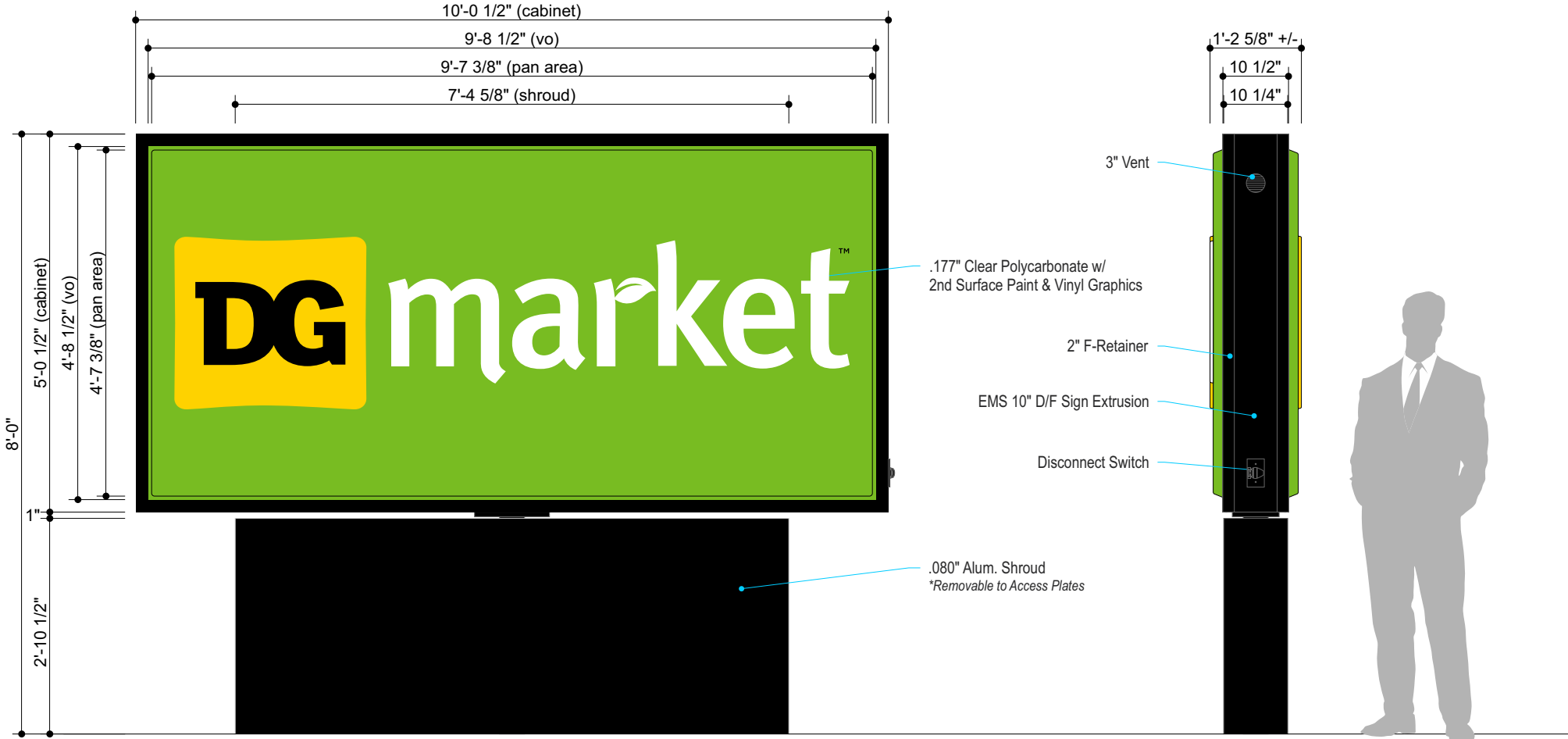
Hardware Mounting Chart				
Note: Threaded Rod will be Provided Standard for All. Other Hardware Is to be Provided by the Installer As Req.	Masonry	Wood	Metal	
Signs and Raceways				
3/8" Zinc Plated Steel Threaded Rod Thru Wall	•	•	•	
3/8" Lags with Shields	•			
3/8" Lag Bolts		•		
3/8" Toggle Bolts			•	

HWL 150 MPH Dollar General Market - 5'-0" x 10'-0" Monument Sign

Internally Illuminated - LED

Insert Item Code

DESIGN INTENT ONLY
Engineering Required to
Determine Actual Production
& Installation Requirements



Front View
Scale: 1/2"=1'-0"

50.63 Sq Ft

Side View
Scale: 1/2"=1'-0"



Night View
Scale: 3/8"=1'-0"

Vinyl Specifications

- 3M 3630-136 Lime Green (translucent vinyl)
- 3M 3635-015 Yellow (translucent vinyl)
- 3M 3630-22 Black (translucent vinyl)
- 3M 3630-20 White (translucent vinyl)

Paint Specifications

- Paint to Match Pantone 109 C
- Paint to Match Pantone 368 C
- White Diffuser
- Black (Semi-Gloss)

All paint finishes to be Satin unless otherwise specified

General Specifications

- Faces:** .177" Clear Polycarbonate Pan Formed / Embossed w/ 2nd Surface Paint & Vinyl Graphics
- Cabinet:** EMS 10" Alum. Sign Frame Cabinet w/ F-Retainers. Exterior Painted Black (Semi Gloss), Interior Painted White
- Illum:** White LEDs as Required by Manufacturer, Self Contained Power Supplies
- Electrical:** Actual # of Circuits to be Determined by Licensed Electrical Contractor (1) 20 AMP Circuit, 120 Volts
- Quantity:** (1) ONE



Electric Sign
Complies with
UL48

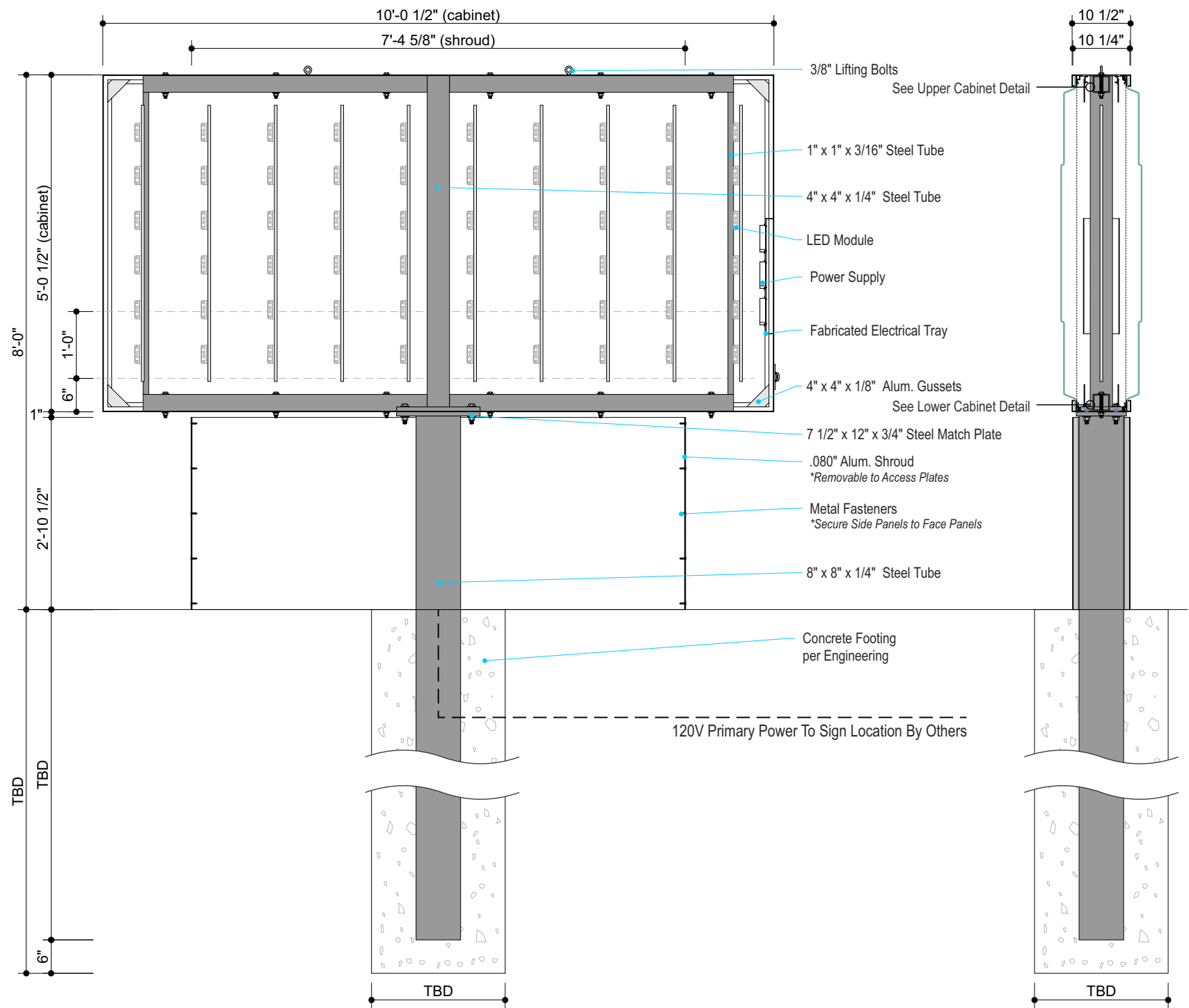
THIS SIGN IS INTENDED TO BE INSTALLED IN ACCORDANCE WITH THE REQUIREMENTS OF ARTICLE 600 OF THE NATIONAL ELECTRICAL CODE AND/OR OTHER APPLICABLE LOCAL CODES. THIS INCLUDES PROPER GROUNDING AND BONDING OF THE SIGN.



HWL 150 MPH Dollar General Market - 5'-0" x 10'-0" Monument Sign

Production Detail

DESIGN INTENT ONLY
Engineering Required to
Determine Actual Production
& Installation Requirements

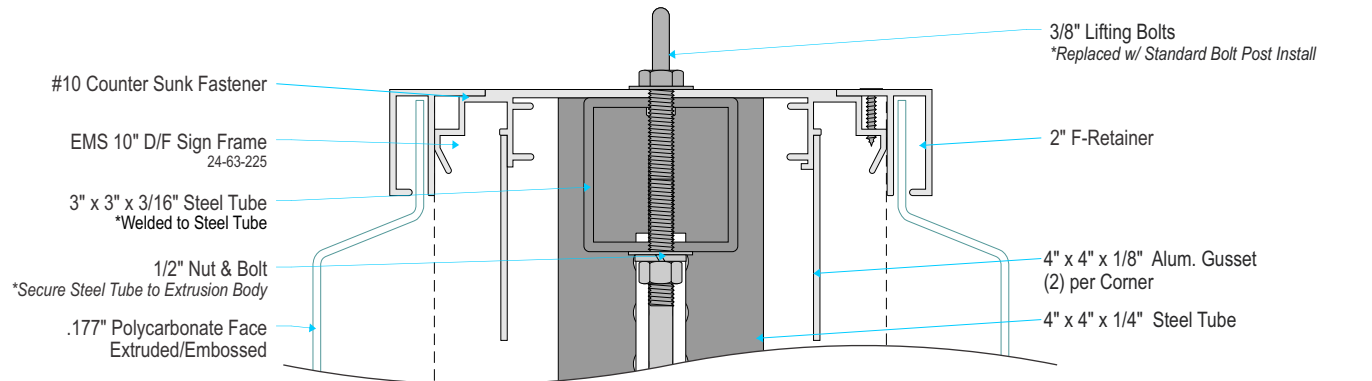


Front Detail

Scale: 1/2"=1'-0"

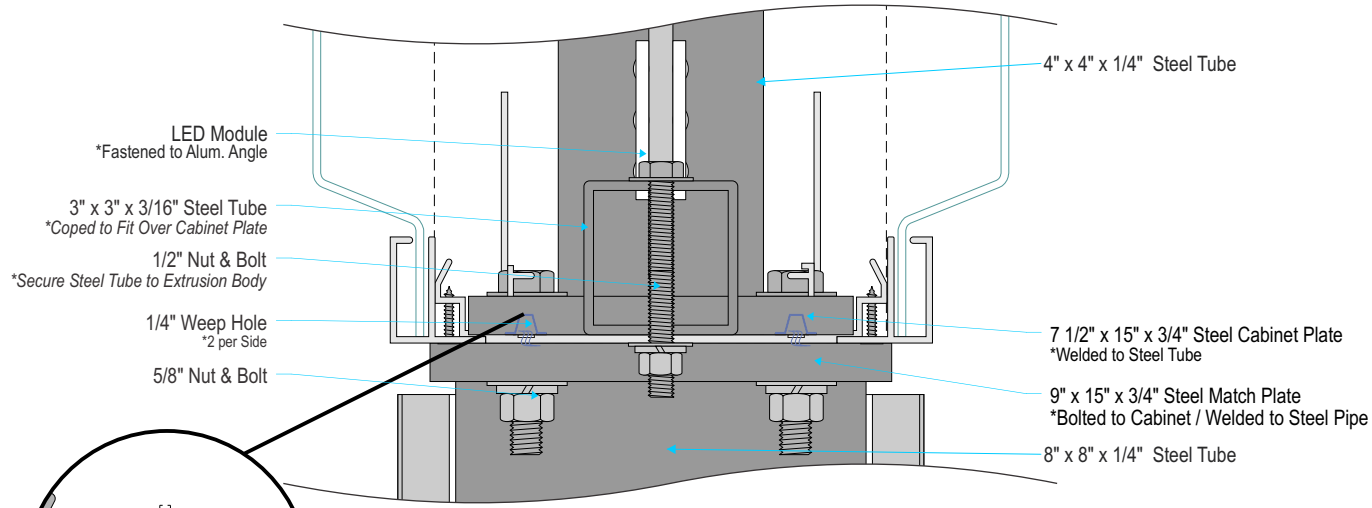
Side Detail

Scale: 1/2"=1'-0"



Cabinet Upper Section Detail

Scale: 3"=1'-0"



Cabinet Lower Section Detail

Scale: 3"=1'-0"

Top/Bottom Extrusion Modified as Needed for Clearance



Electric Sign
Complies with
UL48

THIS SIGN IS INTENDED TO BE INSTALLED IN ACCORDANCE WITH THE REQUIREMENTS OF ARTICLE 600 OF THE NATIONAL ELECTRICAL CODE AND/OR OTHER APPLICABLE LOCAL CODES. THIS INCLUDES PROPER GROUNDING AND BONDING OF THE SIGN.



Allen Industries
YOUR BRAND AT ITS BEST™
1-800-967-2553
www.allenindustries.com

Copyright © 2024 Allen Industries, Inc.
This is an original, unpublished drawing, created by Allen Industries, Inc. This drawing is submitted to you in confidence for your use solely in connection with the project being planned for you by Allen Industries, Inc. and is not to be shown to anyone outside your organization, nor used, reproduced, copied or exhibited in any fashion whatsoever. The designs shown on the drawing (except for any registered trademarks that may belong to a client of Allen Industries, Inc.) remain the property of Allen Industries, Inc.

Client:
**Dollar General Market
#25861**

Address:
**8255 SW US Hwy. 27
Fort White, FL**

Date:
05/10/24

Estimate #:
E14441

Job #:
-

Page #:
7 of 10

File Name:
DG-E14441_Fort White, FL_301

Sales:
House

Design:
LB

PM:
LD

#	Date	Description
1	5/15/24	Change pylon to monument
2	-	-
3	-	-
4	-	-
5	-	-
6	-	-

Initial
LB

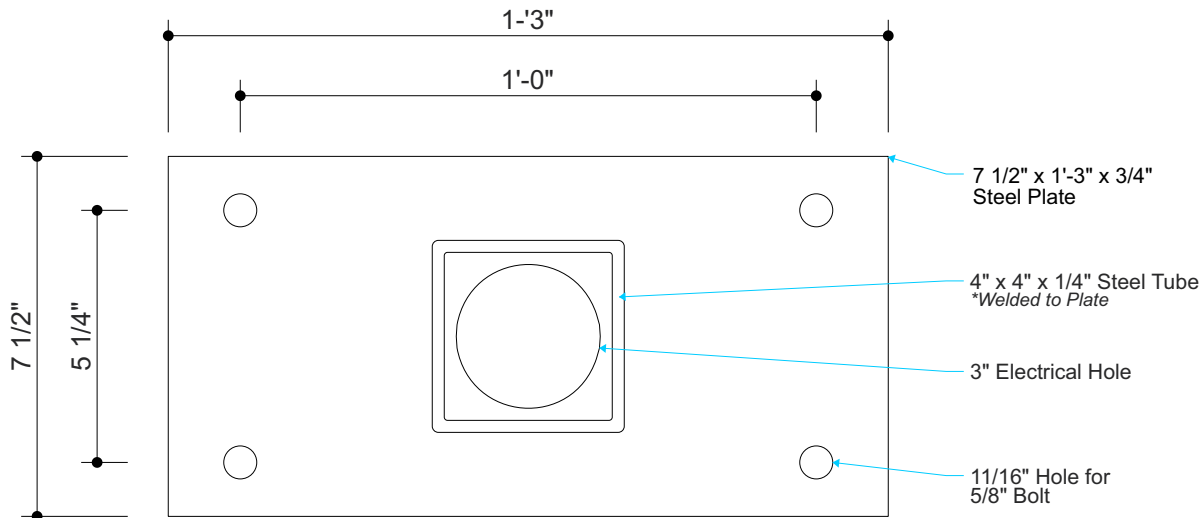
Client Review Status

Allen Industries, Inc. requires that an approved drawing be obtained from the client prior to any production release or production release revision.

Client Signature:

Approval Date:

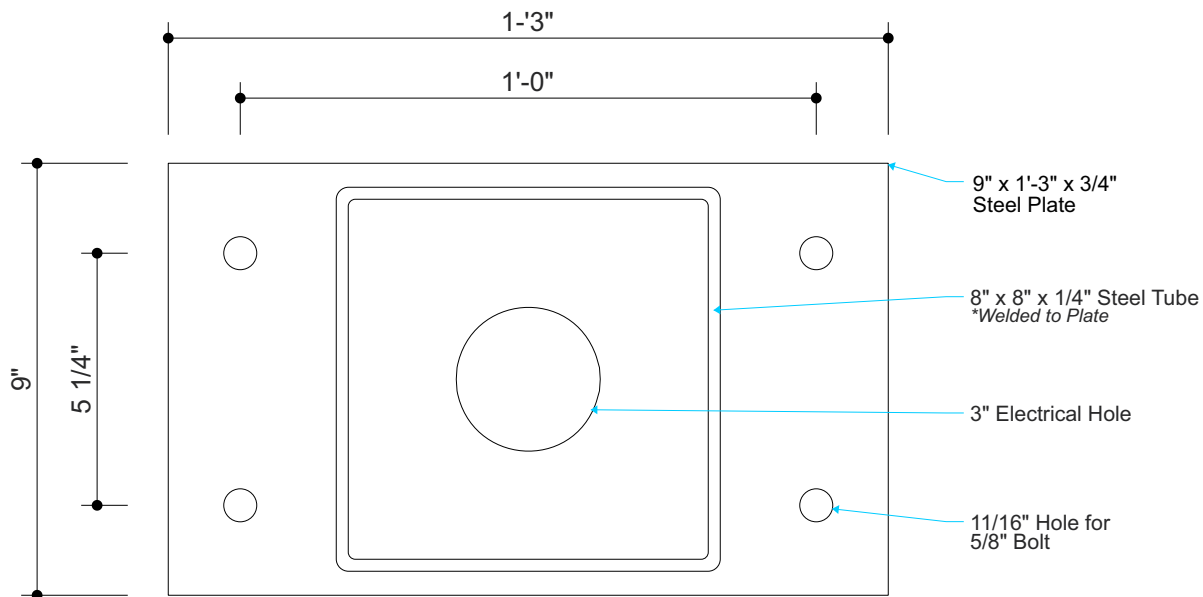
DESIGN INTENT ONLY
Engineering Required to
Determine Actual Production
& Installation Requirements



Cabinet Plate Detail

Scale: 3"=1'-0"

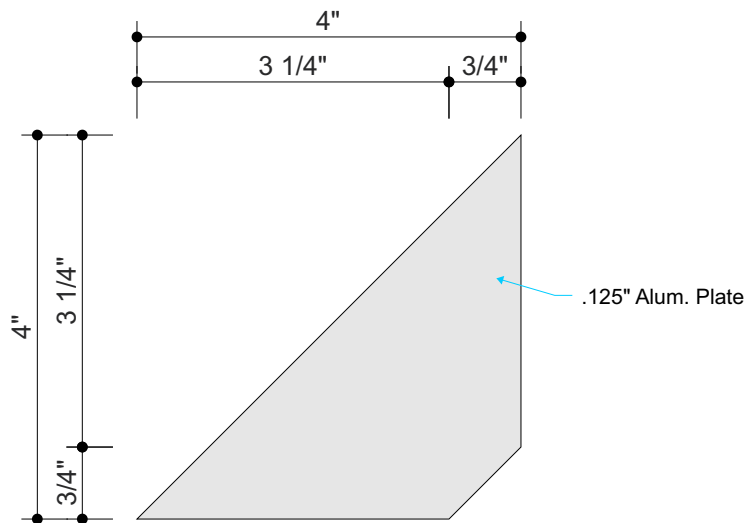
Quantity: 1



Match Plate Detail

Scale: 3"=1'-0"

Quantity: 1



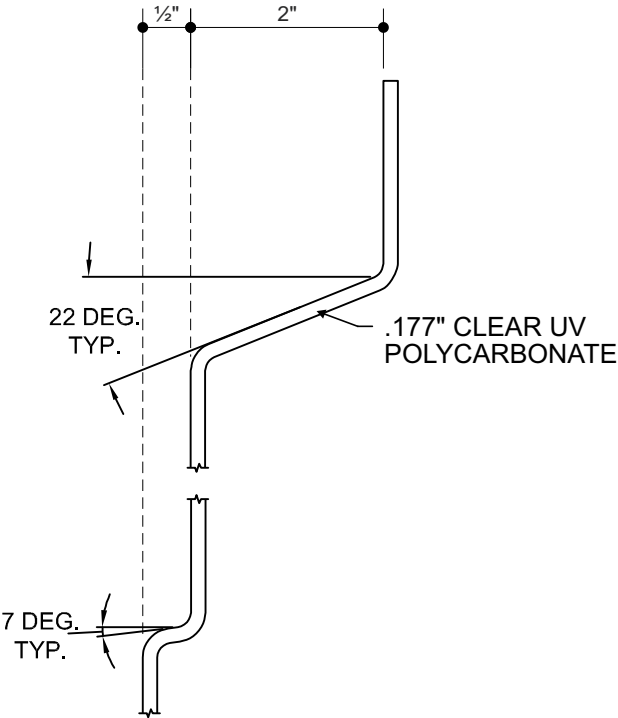
Gusset Detail

Scale: 6"=1'-0"

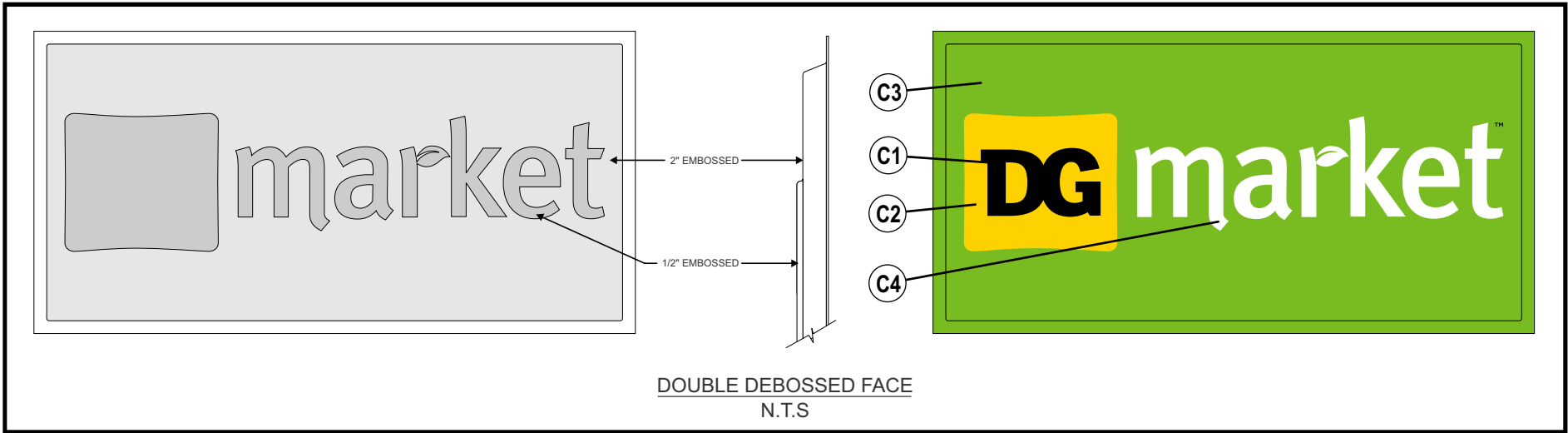
Quantity: 8



Front View
Scale: 1/2"=1'-0"



Face Embossment Detail
Scale: 6"=1'-0"



Vinyl Specifications

C1 3M 3630-22 Black (translucent vinyl)

C2 3M 3630-015 Yellow (translucent vinyl)

Paint Specifications

C3 Paint to Match PMS 368 C

C4 White Diffuser

All paint finishes to be Satin unless otherwise specified

