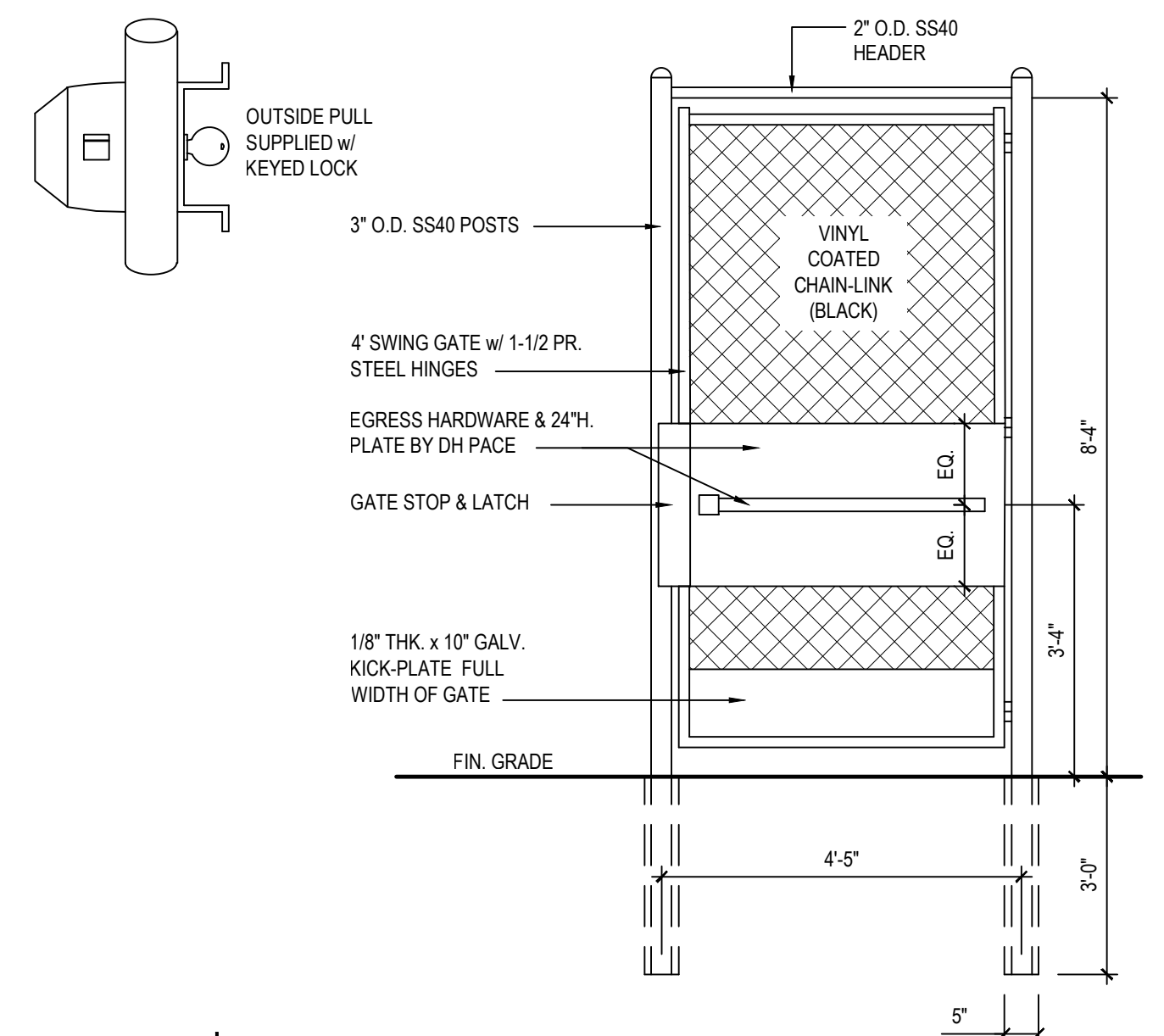
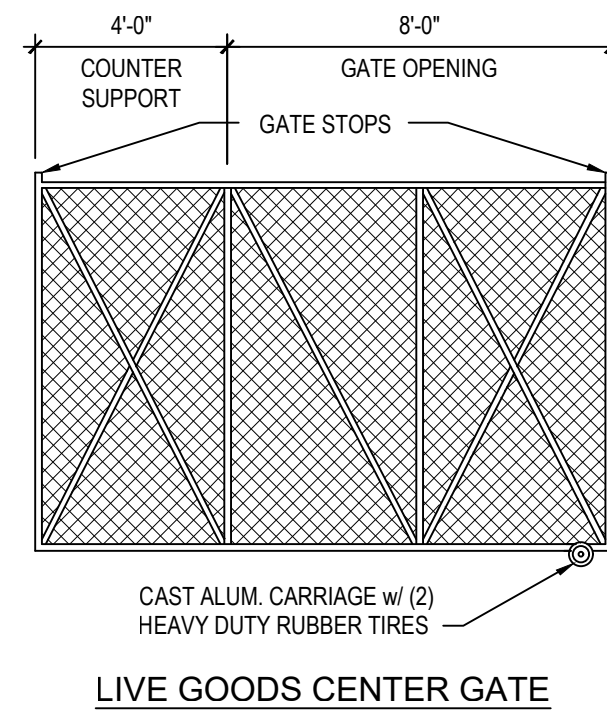
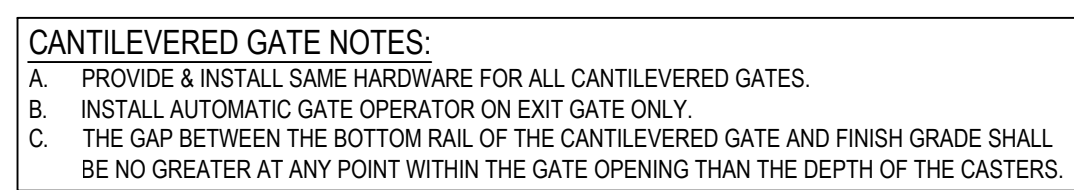
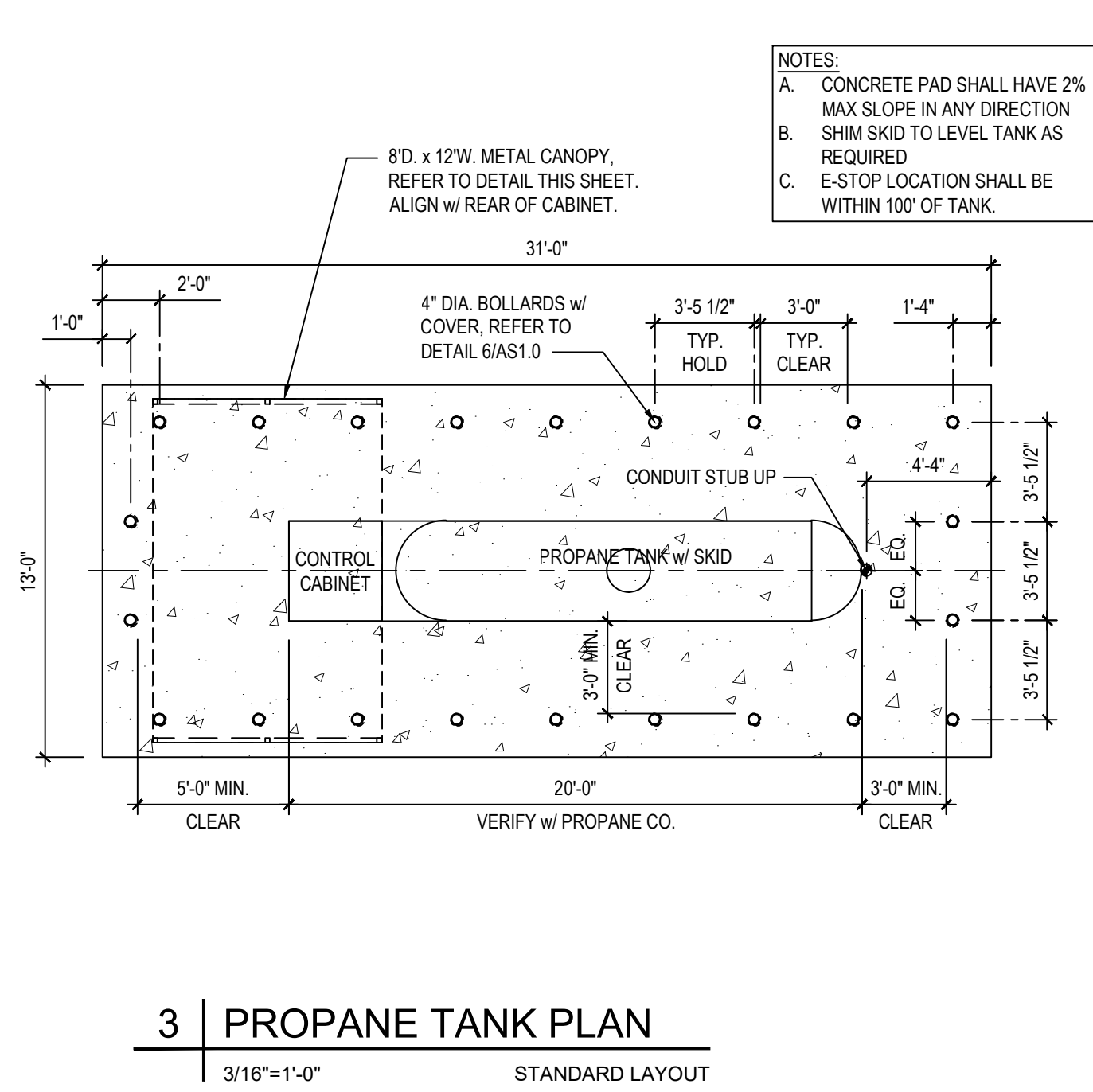


PROPANE TANK DELIVERED PRIOR TO FIXTURE DATE:

1. GENERAL CONTRACTOR IS RESPONSIBLE FOR INFRASTRUCTURE RELATED TO PROPANE TANK INSTALLATION
2. GENERAL CONTRACTOR IS RESPONSIBLE FOR ELECTRICAL PERMITTING AND FINAL CONNECTION TO PUMP DISPENSING CONTROL PANEL.
3. PROPANE PROVIDER IS RESPONSIBLE FOR GAS PERMITTING OF THE TANK.
4. PROPANE PROVIDER IS RESPONSIBLE FOR INSTALLATION AND FINAL GAS CONNECTION OF THE TANK.
5. REFER TO ELECTRICAL DRAWINGS FOR ADDITIONAL INFORMATION.

PROpane TANK IS DELIVERED AFTER FIXTURE DATE:

1. GENERAL CONTRACTOR IS RESPONSIBLE FOR INFRASTRUCTURE RELATED TO PROpane TANK INSTALLATION
2. PROpane PROVIDER IS RESPONSIBLE FOR ELECTRICAL PERMITTING AND FINAL CONNECTION TO PUMP DISPENSING CONTROL PANEL.
3. PROpane PROVIDER IS RESPONSIBLE FOR GAS PERMITTING OF THE TANK.
4. PROpane PROVIDER IS RESPONSIBLE FOR INSTALLATION AND FINAL GAS CONNECTION OF THE TANK.
5. REFER TO ELECTRICAL DRAWINGS FOR ADDITIONAL INFORMATION.



**5. FABRIC:** 96" H x 9 GA. GALVANIZED (2" MESH) CHAIN LINK FABRIC.

**TOP & BOTTOM RAIL:** 1.58" O.D. FULL WEIGHT PIPE, 2.27 LBS. PER FOOT (MIN). TOP RAIL TO BE JOINED W/ 1.58" SLEEVE WHERE APPLICABLE. BOTTOM RAIL @ 18" ABOVE GROUND.

**LINE POST:** 2 1/2" O.D. FULL WEIGHT PIPE, 3.65 LBS. PER FOOT (MIN) @ 10' O.C. MAX. SPACING W/ 3" DEEP CONCRETE FOOTING.

**TERMINAL POST:** 2" O.D. FULL WEIGHT PIPE, 5.79 LBS. PER FOOT (MIN) W/ 3" DIA. 36" DEEP CONCRETE FOOTING.

**GATES:** 1. 12' O.D. FULL WEIGHT PIPE, 9.10 LBS. PER FOOT (MIN) W/ 3" DIA. 36" DEEP CONCRETE FOOTING.

**2. LIFTER:**

- A. 12' O.D. W/ 7" x 7" (20" OPENING) MANUALLY CANTILEVERED CHAIN LINK GATE.
- B. 12' O.D. W/ 7" x 7" (20" OPENING) MANUALLY CANTILEVERED CHAIN LINK GATE W/ LIFTER.
- C. 12' O.D. W/ 7" x 7" (20" OPENING) CANTILEVERED CHAIN LINK GATE W/ AUTOMATIC GATE OPERATOR SLS85 BY LIFTERMASTER. PROVIDE POST MOUNTED OVERRIDE KEYPAD & (2) PROGRAMMED REMOTE CONTROLS.
- D. 12' O.D. W/ 8" x 8" (24" OPENING) MANUALLY SWING GATE @ 1.58" O.D. FULL WEIGHT PIPE FRAMEWORK, 2.27 LBS. PER FOOT (MIN) CANTILEVERED UNDER THE MANUFACTURER'S DESIGN STANDARDS.

**E. GATES SHALL BE BRACED/TRUSSED AS NECESSARY W/ FABRIC TO MATCH FENCE AND HAVE SAME FABRIC AS FENCE TENSION WIRE:** 7 GA. COIL SPRING GALVANIZED TENSION WIRE ATTACHED TO BOTTOM OF FENCE FABRIC W/ 9 GA. ALUM. HINGE W/ 18" O.C. MAX.

**6. FITTINGS:** HEAVY BRACED BARS & CARRIAGE BOLTS, PRESSED STEEL RAIL ENDS, PRESSED STEEL LOOP CAPS, PRESSED STEEL RAILS x 1/4" x 3/4" TENSION BARS, HEAVY TENSION BARS & CARRIAGE BOLTS.

**7. TIE WIRE:** 8-14" x 12 GA. STEEL TIE WIRE 8-6 1/2" x 12 GA. STEEL WIRE SPACED 15" O.C. FOR LINE POSTS & 24" O.C. FOR RAILS.

**8. POST FOOTING:** TPO POLYURETHANE CONCRETE.

**9. GATE RECEPTER LATCH:** POST MOUNTED GATE RECEPTER LATCH WITH THE ABILITY TO ACCEPT A STANDARD PAD LOCK.

**10. VINYL COATED FABRIC & POSTS:** COLOR: BLACK.

**11. HIGH-DENSITY POLYETHYLENE (HDPE) STRIPS:** SIZED TO FIT FABRIC WEAVE. COLOR: BLACK. (WHERE REQUIRED)

**16. HIGH (FOR WIND SPEEDS UP TO 130 MPH):**

**1. FABRIC:** 120" H x 9 GA. GALVANIZED (2" MESH) CHAIN LINK FABRIC.

**TOP & BOTTOM RAIL:** 1.58" O.D. FULL WEIGHT PIPE, 2.27 LBS. PER FOOT (MIN). TOP RAIL TO BE JOINED W/ 1.58" SLEEVE WHERE APPLICABLE. BOTTOM RAIL @ 18" ABOVE GROUND. INTERMEDIATE RAILS SHALL BE INSTALLED @ 48" O.C. MAX.

**LINE GATE & TERMINAL POSTS:** 4" O.D. 1 1/4" WALL THICKNESS (MIN) W/ 8" DIA. x 60" DEEP CONCRETE FOOTING. LINE POST SPACED @ 10' O.C. MAX.

**TENSION WIRE:** 7 GA. COIL SPRING GALVANIZED TENSION WIRE ATTACHED TO BOTTOM OF FENCE FABRIC W/ 9 GA. ALUM. HINGE W/ 18" O.C. MAX.

**2. FITTINGS:** HEAVY BRACED BARS AND CARRIAGE BOLTS, PRESSED STEEL RAIL ENDS, PRESSED STEEL LOOP CAPS, PRESSED STEEL RAILS x 1/4" x 3/4" TENSION BARS, HEAVY TENSION BARS & CARRIAGE BOLTS.

**3. TIE WIRE:** 8-14" x 12 GA. STEEL TIE WIRE 8-6 1/2" x 12 GA. STEEL WIRE @ 15" O.C. FOR LINE POSTS & 24" O.C. FOR RAILS.

**4. POST FOOTING:** TPO POLYURETHANE CONCRETE.

**5. VINYL COATED FABRIC & POSTS:** COLOR: BLACK.

**6. HIGH-DENSITY POLYETHYLENE (HDPE) STRIPS:** SIZED TO FIT FABRIC WEAVE. COLOR: BLACK. (WHERE REQUIRED)

1. FABRIC: 192" H x 9'6" GALVANIZED 18" HEM CHAIN LINK FABRIC.
2. TENSION WIRE: 1/4" DIA. WEIGHT RAIL: 2 1/2" THICK (MIN) 12" DIA. POST TO BE JOINED W/ 15# ALUM. SHEET PILE ANCHOR. BOTTOM RAIL TO BE 18" ABOVE GRADE. INTERMEDIATE HORIZONTAL RAILS SHALL BE INSTALLED @ 4'0" MAX.
3. LINE, GATE & TERMINAL POSTS: 4" DIA. 12' TALL THICKNESS (MIN) W/ 12" DIA. x 60" DEEP CONCRETE FOOTING. LINE POST SPACING @ 10'0" MAX.
4. TENSION WIRE: 7 GA. COIL SPRING GALVANIZED TENSION WIRE ATTACHED TO BOTTOM OF FENCE FABRIC W/ 9 GA. ALUM. HO RING SPACING 24" O.C.
5. END RAILS: 1 1/2" DIA. GALVANIZED RAILS & CARRIAGE BOLTS, PRESSED STEEL, RAIL-ENDS, PRESSED STEEL CARRIAGE BOLTS, PRESSED STEEL CAPS, 1/4" x 3/4" TENSILE BARS, HEAVY TENSION BARS & CARRIAGE BOLTS.
6. THE WIRE: 8-14" x 1/2" DIA STEEL TIE WIRE 8-12" x 1/2" DIA. STEEL WIRE @ 15" O.C. FOR LINE POST & 24" O.C. FOR RAILS.
7. POST FOOTING: TPOUR POURED CONCRETE.
8. VINYL COATED FABRIC & POSTS: COLOR BLACK.
9. HIGH-DENSITY POLYETHYLENE (HDPE) STRIPS, SIZED TO FIT FABRIC COLOR. (WHERE REQUIRED)

3.01	EXAMINATION	VERIFICATION OF CONDITIONS. VERIFY THAT AREAS ARE CLEAR OF OBSTRUCTIONS OR DEBRIS.
3.02	INSTALLATION	A. INSTALL FRAMEWORK, FABRIC, ACCESSORIES AND GATES IN ACCORDANCE WITH ASTM F567.
3.03	TOLERANCES	A. MAXIMUM VARIATION FROM PLUMB: 1/4 INCH. B. MAXIMUM OFFSET FROM TRUE POSITION: 1 INCH. C. DO NOT INFRINGE ON ADJACENT PROPERTY LINES.
3.04	FIELD QUALITY CONTROL	A. VERIFY THAT FENCE INSTALLATION MARKINGS ARE ACCURATE TO DESIGN, PAYING ATTENTION TO GATE LOCATIONS, UNDERGROUND UTILITIES, AND PROPERTY LINES. B. WORKMANSHIP. VERIFY NEAT INSTALLATION FREE OF DEFECTS. SEE CLUM CLF-F1501111 FOR FIELD INSPECTION
3.05	CLEANING	A. CLEAN JOBSITE OF EXCESS MATERIALS, SCATTER EXCESS MATERIAL FROM POST HOLE EXCAVATIONS. UNIFORMITY AWAY FROM POSTS. REMOVE EXCESS MATERIAL IF REQUIRED. B. CLEAN FENCE WITH MILD HOUSEHOLD DETERGENT AND COLD WATER RINSE WELLS.

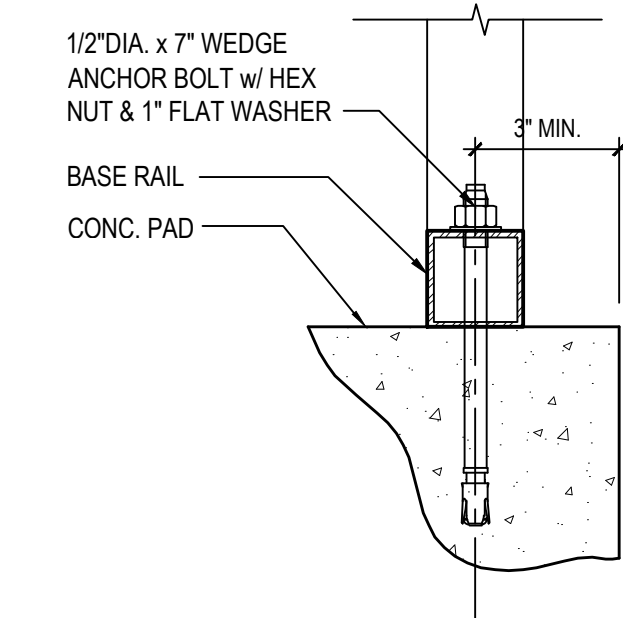
UNDERGROUND UTILITIES, AND PROPERTY LINES.

B. WORKMANSHIP. VERIFY NEAT INSTALLATION FREE OF DEFECTS. SEE CLUM CLF-FIGS111 FOR FIELD INSPECTION GUIDANCE.

3.05 CLEANING

A. CLEAN JOBSITE OF EXCESS MATERIALS, SCATTER EXCESS MATERIAL FROM POST HOLE EXCAVATIONS UNIFORMLY AWAY FROM POSTS, REMOVE EXCESS MATERIAL IF REQUIRED.

B. CLEAN FENCE WITH MILD HOUSEHOLD DETERGENT AND CLEAN WATER RINSE WELL.



## 1 | PROPANE CANOPY ANCHOR DETAIL