



SIGN PACKAGE PROPOSAL

NEW BUILD

PRESENTED TO:

Culver's
205 N. Marion Ave.
Lake City, FL

394 NW Commons Loop
Lake City, FL 32055

DATE PREPARED:

2/23/22 - Preliminary
4/8/22 - Permitting

Cost of Signage:

BB-1 - \$115.00
SL-30 Wall Signs - \$1,780
SL-45 Wall Signs - \$2,635
Directional - \$515.72
Menu Board - \$5,675 (x2)
DTC-2 - \$5735.00 (x2)
VHD-1 - \$835.00 (x2)
PE-40 - \$24,875.50
EMC - \$15,561.00

BB-1 BUTTERBURGER PANEL

LAKE CITY, FL

ButterBurger Outdoor Panel Wall Sign

BB-1

All aluminum 0.080" thick panel -
backside is blank (white)

Baked on aluminum white enamel
finish

Digital print overlay with
overlamine

Rounded corners are to be 1.25"
radius

Sign is to be mounted at 50 degree
angle (set by flange)

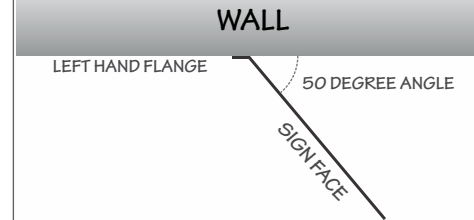


SCALE: 1-1/2" = 1'

* Determined by physical address numbers

*SCALE AND COLORS NOT REPRESENTATIVE FROM EMAIL ATTACHMENTS
*ALL MEASUREMENTS ARE APPROXIMATE

TYPICAL INSTALLATION - TOP VIEW



SCALE: N.T.S

HOLE PATTERN

HOLES ARE .250" DIAMETER
.737" IN FROM SIDE & 1.488" IN FROM TOP & BOTTOM
TAB IS TO BE BENT 50 DEGREES UP AT LINE

NOTES

SALES PERSON:	DESIGNED BY:	A0:
MARK WESSELL	J KROEGER	35883

DATE CREATED / REVISION HISTORY	
2/23/22 - NEW	
4/8/22 - Permitting	

© 2020 Springfield Sign & Graphics Inc., Springfield Sign

This drawing is Copyrighted material, it remains the property of Springfield Sign unless otherwise agreed upon in writing. It is unlawful to use this drawing for bidding purposes, nor can it be reproduced, copied or used in the production of a sign without written permission from Springfield Sign & Graphics.

This is an artistic rendition and final colors / sizes may vary from that depicted herein.



 **SPRINGFIELD SIGN**
www.springfieldsign.com

ELEVATION WALL SIGNS

LAKE CITY, FL

SL-45 & SL-30 Illuminated White Script Channel Letters

SL-SERIES

Channel letter construction

One piece (saddle capped sections)

LED internal illumination

Typical application for new construction

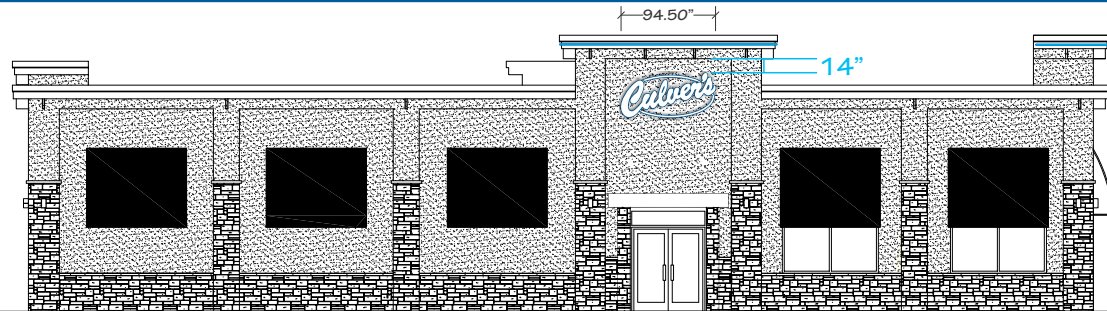
Embedded power supplies

UL marked product

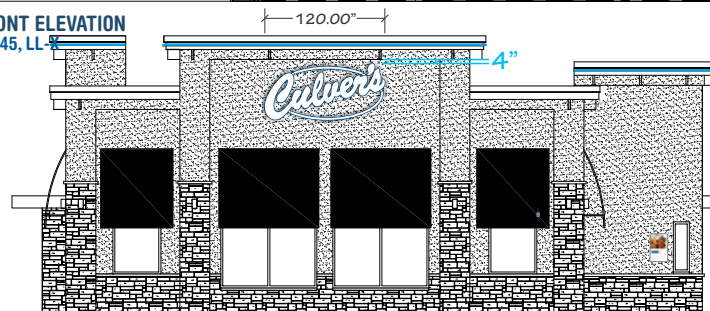
No install pattern needed, level line scribed in back of sign

Culver's

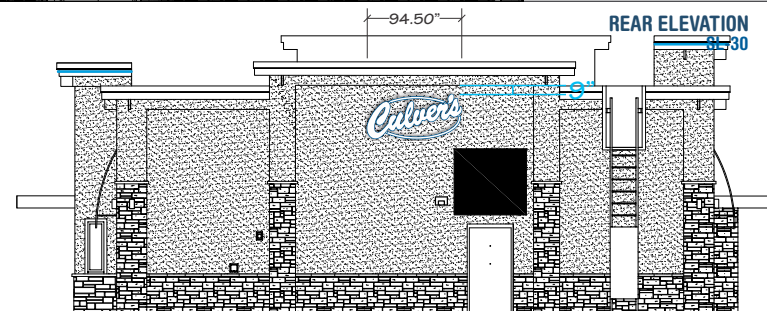
MAIN ELEVATION
SL-30, LL-X



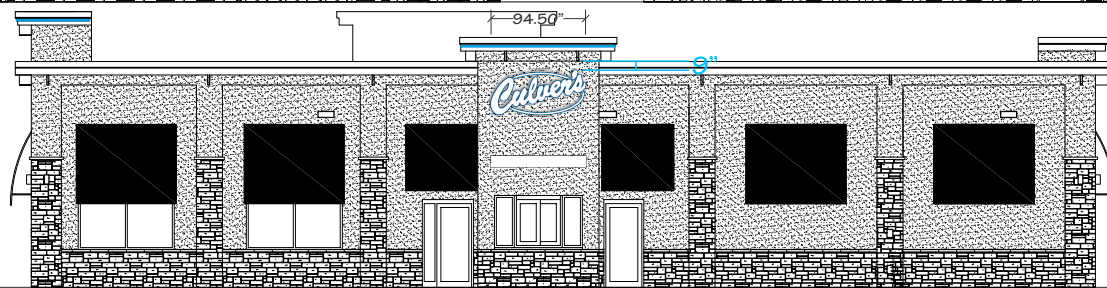
FRONT ELEVATION
SL-45, LL-X



REAR ELEVATION
SL-30



DRIVE THRU ELEVATION
SL-30, LL-X, BB-1



SCALE: 1/16" = 1'

*SCALE AND COLORS NOT REPRESENTATIVE FROM EMAIL ATTACHMENTS
*ALL MEASUREMENTS ARE APPROXIMATE

SIGN SQUARE FOOTAGE

MAIN ELEVATION: QTY-1 SL-30 (44.37" X 94.50") = 29.12 SF
FRONT ELEVATION: QTY-1 SL-45 (56.00" X 120.00") = 46.67 SF
REAR ELEVATION: QTY-1 SL-30 (44.37" X 94.50") = 29.12 SF
DRIVE THRU ELEVATION: QTY-1 SL-30 (44.37" X 94.50") = 29.12 SF
QTY-1 BB-1 (17.67" X 27.88") = 3.42 SF

NOTES

LL-X LED accent strip lighting typical placements:
MAIN: (2) places - FRONT: (3) Places - REAR: 2,
DRIVE THRU: (2) places
BB-1 typical Drive-Thru placement: DRIVE THRU



MFG: T.B.D.
STYLE: T.B.D.
COLOR: T.B.D.



MFG: T.B.D.
STYLE: T.B.D.
COLOR: T.B.D.

DATE CREATED / REVISION HISTORY

2/23/22 - NEW

4/8/22 - Permitting

SALES PERSON:
MARK WESSELL

DESIGNED BY:
J KROEGER

A0:
35883

© 2020 Springfield Sign & Graphics Inc., Springfield Sign

This drawing is Copyrighted material, it remains the property of Springfield Sign unless otherwise agreed upon in writing. It is unlawful to use this drawing for bidding purposes, nor can it be reproduced, copied or used in the production of a sign without written permission from Springfield Sign & Graphics.

This is an artistic rendition and final colors / sizes may vary from that depicted herein.



 **SPRINGFIELD SIGN**
www.springfieldsign.com

PE-40 PYLON WITH EMC

LAKE CITY, FL

PE-40-L-36X108-10-RGB

PE-40

Culver's sign cabinet of aluminum construction and internally illuminated with LED's

Pole skirt enclosure provides cradle rest for iconic Culver's logo - all aluminum construction

Thermoformed polycarbonate faces, embossed Culver's, 3M¹ HP vinyl decoration

Watchfire³ 36x108 RGB full color 10mm Electronic Message Center (EMC) with RF wireless communication

Amber EMC option available

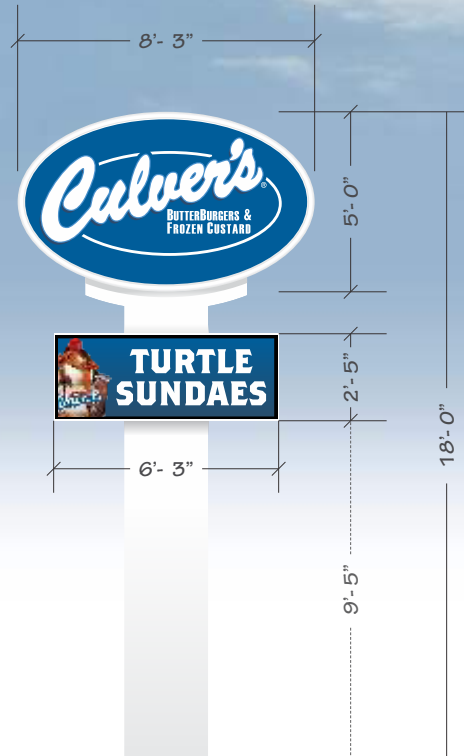
Broadband communication option available

UL marked product

1 - Watchfire signs by Time-O-Matic Inc.



NOTE:
ELECTRONIC MESSAGE CENTER
(EMC) SOLD SEPARATELY



SCALE: 3/16" = 1'

*SCALE AND COLORS NOT REPRESENTATIVE FROM EMAIL ATTACHMENTS
*ALL MEASUREMENTS ARE APPROXIMATE

EMC CHART - KNOWN RESTRICTIONS

COLOR: Y ☒ N ☐ STATIC: Y ☒ N ☐ VIDEO: Y ☐ N ☒
ANIMATION: Y ☐ N ☒ MOVEMENT: Y ☐ N ☒

HOLD TIME (IF STATIC): ? Sec/Min

TRANSITION TYPE: Transition if applicable

DAYTIME BRIGHTNESS: Brightness if applicable

NIGHTTIME BRIGHTNESS: Brightness if applicable

ADDITIONAL RESTRICTIONS:

on-Flashing Sign Area - 1.50 times the linear lot road frontage distance
Scrolling or Animated Sign Area - .50 times the linear lot road frontage distance to a maximum of 20 square feet.
18' Height restriction. 20 SF Max on EMC.

SIGN CODES

NOTES

SQUARE FOOTAGE CALCULATIONS:

Oval: 5'-0" x 8'-3" = 56.35 SF

EMC: 2'-5" x 6'-3" = 15.10 SF

Total: 56.35 SF

SALES PERSON:

MARK WESSELL

DESIGNED BY:

J KROEGER

A0:

35883

DATE CREATED / REVISION HISTORY

2/23/22 - NEW

4/8/22 - Permitting

©2020 Springfield Sign & Graphics Inc., Springfield Sign

This drawing is Copyrighted material, it remains the property of Springfield Sign unless otherwise agreed upon in writing. It is unlawful to use this drawing for bidding purposes, nor can it be reproduced, copied or used in the production of a sign without written permission from Springfield Sign & Graphics.

This is an artistic rendition and final colors / sizes may vary from that depicted herein.



SPRINGFIELD SIGN

www.springfieldsign.com

AD-1 ADDRESS NUMBERS

LAKE CITY, FL

Routed Address Numbers

AD-1

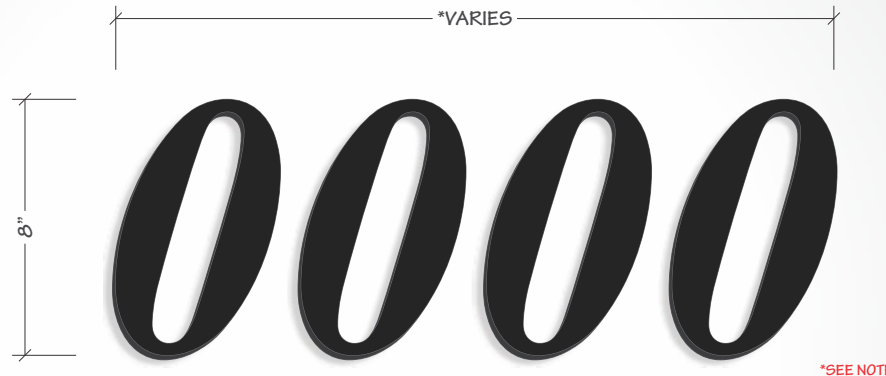
Address letters as required for building occupancy

Size & quantity may vary

Stud/adhesive mounting

1/2" thick, black XPVC

NOTE: Address to be verified with G.C. prior to mfg.



*SEE NOTE

SCALE: 1" = 6'

*SCALE AND COLORS NOT REPRESENTATIVE FROM EMAIL ATTACHMENTS
*ALL MEASUREMENTS ARE APPROXIMATE

TYPICAL INSTALLATION

*SEE NOTE



SCALE: 1/8" = 1'

NOTES

SALES PERSON:
MARK WESSELL

DESIGNED BY:
J KROEGER

A0:
35883

DATE CREATED / REVISION HISTORY

2/23/22 - NEW
4/8/22 - Permitting

Culver's

© 2020 Springfield Sign & Graphics Inc., Springfield Sign

This drawing is Copyrighted material, it remains the property of Springfield Sign unless otherwise agreed upon in writing. It is unlawful to use this drawing for bidding purposes, nor can it be reproduced, copied or used in the production of a sign without written permission from Springfield Sign & Graphics.

This is an artistic rendition and final colors / sizes may vary from that depicted herein.



ENVIRONMENTALLY
RESPONSIBLE



SPRINGFIELD SIGN

www.springfieldsign.com

DIR DIRECTIONAL SIGNS

LAKE CITY, FL

Illuminated Directional Signs

DIR

All aluminum construction

LED internal illumination

Totally self contained lighting

Polycarbonate thermoformed faces

Face removal for service

Site plans show placement & field orientation

UL marked product



DIRECTIONAL SIGN 1
DIR-D10-D12



SIDE: A



SIDE: B

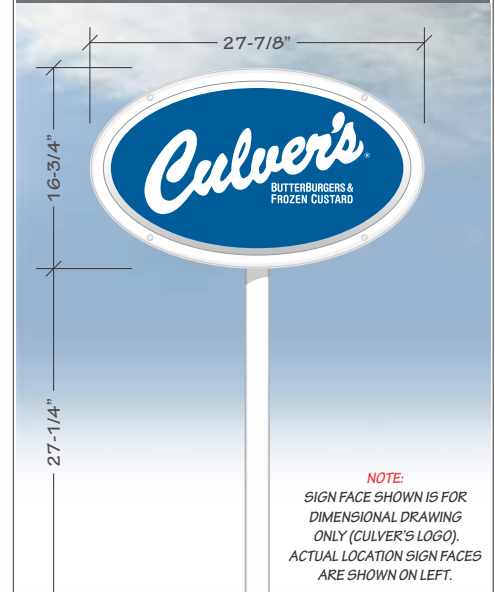
DIRECTIONAL SIGN 2
DIR-#-#

DIRECTIONAL SIGN 3
DIR-#-#

SCALE: 3/4" = 1'

*SCALE AND COLORS NOT REPRESENTATIVE FROM EMAIL ATTACHMENTS
*ALL MEASUREMENTS ARE APPROXIMATE

SIGN CONCEPTUAL



NOTE:
SIGN FACE SHOWN IS FOR
DIMENSIONAL DRAWING
ONLY (CULVER'S LOGO).
ACTUAL LOCATION SIGN FACES
ARE SHOWN ON LEFT.

NOTES

SQUARE FOOTAGE CALCULATIONS:
MATHEMATICAL: 2.55 SF
RECTANGULAR: 3.24 SF

SALES PERSON:
MARK WESSELL

DESIGNED BY:
J KROEGER

A0:
35883

DATE CREATED / REVISION HISTORY

2/23/22 - NEW
4/8/22 - Permitting

© 2020 Springfield Sign & Graphics Inc., Springfield Sign

This drawing is Copyrighted material, it remains the property of Springfield Sign unless otherwise agreed upon in writing. It is unlawful to use this drawing for bidding purposes, nor can it be reproduced, copied or used in the production of a sign without written permission from Springfield Sign & Graphics.

This is an artistic rendition and final colors / sizes may vary from that depicted herein.



ENVIRONMENTALLY
RESPONSIBLE



SPRINGFIELD SIGN

www.springfieldsign.com

DTC-2 DRIVE-THRU CANOPY

LAKE CITY, FL

Drive-Thru Canopy For Order Confirmation System (OCS)

DTC-2

All aluminum construction

Rated for 160 mph winds (3 second burst) & heavy northern states snow loads

Order Confirmation System (OCS) by others

Rear panel (door) access - lockable

Provides protection from rain for DT customer

Houses OCS, speaker &

Culver's



SCALE: 3/8" = 1'



*SCALE AND COLORS NOT REPRESENTATIVE FROM EMAIL ATTACHMENTS
*ALL MEASUREMENTS ARE APPROXIMATE

NOTES

DATE CREATED / REVISION HISTORY

2/23/22 - NEW

4/8/22 - Permitting

SALES PERSON:
MARK WESSELL

DESIGNED BY:
J KROEGER

AO:
35883

© 2020 Springfield Sign & Graphics Inc., Springfield Sign

This drawing is Copyrighted material, it remains the property of Springfield Sign unless otherwise agreed upon in writing. It is unlawful to use this drawing for bidding purposes, nor can it be reproduced, copied or used in the production of a sign without written permission from Springfield Sign & Graphics.

This is an artistic rendition and final colors / sizes may vary from that depicted herein.



ENVIRONMENTALLY
RESPONSIBLE



SPRINGFIELD SIGN

www.springfieldsign.com

DTC-2 DRIVE-THRU CANOPY

LAKE CITY, FL

Drive-Thru Canopy For Order Confirmation System (OCS)

DTC-2

All aluminum construction

Rated for 160 mph winds (3 second burst) & heavy northern states snow loads

Order Confirmation System (OCS) by others

Rear panel (door) access - lockable

Provides protection from rain for DT customer

Houses OCS, speaker &

Culver's



SCALE: 3/8" = 1'



*SCALE AND COLORS NOT REPRESENTATIVE FROM EMAIL ATTACHMENTS
*ALL MEASUREMENTS ARE APPROXIMATE

NOTES

DATE CREATED / REVISION HISTORY

2/23/22 - NEW

4/8/22 - Permitting

SALES PERSON:
MARK WESSELL

DESIGNED BY:
J KROEGER

AO:
35883

© 2020 Springfield Sign & Graphics Inc., Springfield Sign

This drawing is Copyrighted material, it remains the property of Springfield Sign unless otherwise agreed upon in writing. It is unlawful to use this drawing for bidding purposes, nor can it be reproduced, copied or used in the production of a sign without written permission from Springfield Sign & Graphics.

This is an artistic rendition and final colors / sizes may vary from that depicted herein.



ENVIRONMENTALLY
RESPONSIBLE

 **SPRINGFIELD SIGN**
www.springfieldsign.com

FCO-3 INTERIOR SIGN

LAKE CITY, FL

FCO Interior Sign with City & State

FCO-3

0.25" painted aluminum plate

Routed to shape

Pin mounted for rough surface application

VHB tape for smooth wall application

Mounting pattern with fastener instructions

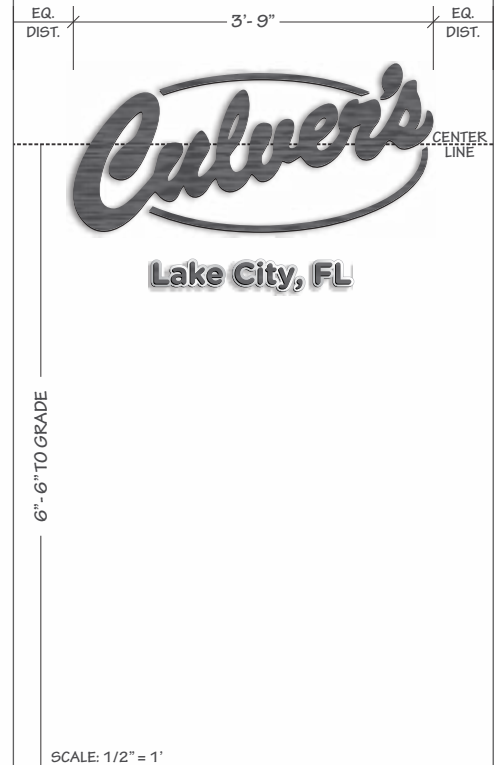


SCALE: 1" = 1'



*SCALE AND COLORS NOT REPRESENTATIVE FROM EMAIL ATTACHMENTS
*ALL MEASUREMENTS ARE APPROXIMATE

SIGN PLACEMENT



SALES PERSON:	DESIGNED BY:	A0:
MARK WESSELL	J KROEGER	35883

DATE CREATED / REVISION HISTORY	
2/23/22 - NEW	
4/8/22 - Permitting	



MAX-1 MAXIMUM OCCUPANCY SIGN

LAKE CITY, FL

Interior Maximum Occupancy Sign

MAX-1

3/16" White acrylic substrate

Direct to surface printing

3M¹ VHB peel & stick adhesive on back

"MAXIMUM OCCUPANCY" must be verified prior to manufacturing

1 - 3M is a registered trademark of Minnesota Mining & Manufacturing



Culver's

SCALE: 3" = 1'

*SCALE AND COLORS NOT REPRESENTATIVE FROM EMAIL ATTACHMENTS
*ALL MEASUREMENTS ARE APPROXIMATE

NOTES

REVISION HISTORY

2/23/22 - NEW

4/8/22 - Permitting

SALES PERSON:
MARK WESSELL

DESIGNED BY:
J KROEGER

AO:
35883

© 2020 Springfield Sign & Graphics Inc., Springfield Sign

This drawing is Copyrighted material, it remains the property of Springfield Sign unless otherwise agreed upon in writing. It is unlawful to use this drawing for bidding purposes, nor can it be reproduced, copied or used in the production of a sign without written permission from Springfield Sign & Graphics.

This is an artistic rendition and final colors / sizes may vary from that depicted herein.



ENVIRONMENTALLY
RESPONSIBLE

 **SPRINGFIELD SIGN**
www.springfieldsign.com

MB-DT-46 EXTERIOR MENU BOARD

LAKE CITY, FL

Blue Outdoor Drive-Thru Menu Board

MB-DT-46

Standard Menu Board for Drive-Thru Lane

LED Internal Illumination

POP Graphic panels must be purchased separately

POPP-Out magnet access panels included for easy in & out of POP panels

"-CS" option for 160mph coastal wind standards available

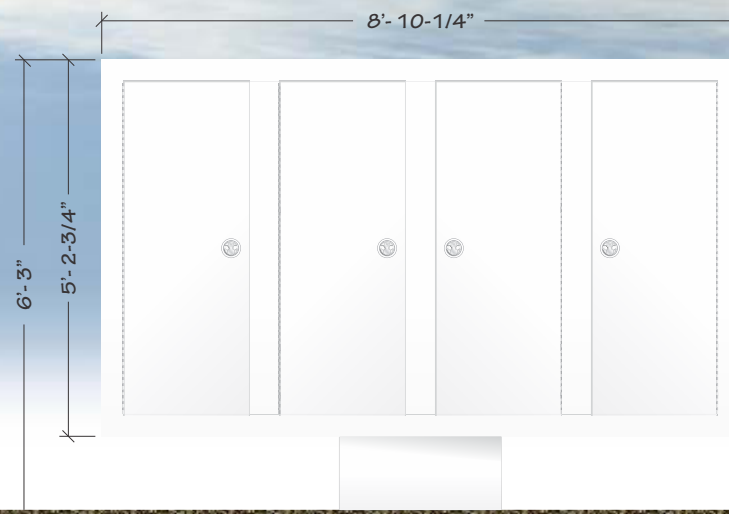
Locking rear access doors (4)

Culver's

FRONT



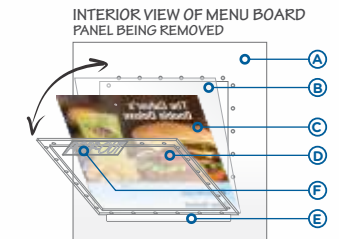
REAR



SCALE: 3/8" = 1'

*SCALE AND COLORS NOT REPRESENTATIVE FROM EMAIL ATTACHMENTS
*ALL MEASUREMENTS ARE APPROXIMATE

POPP-Out Point Of Purchase Panel System



- A - INSIDE BACK OF MENU BOARD FACE (ONLY ONE PANEL SHOWN FOR CLARITY)
- B - FRONT PANEL IS ANTI-GLARE (CLEAR) FOR INCREASED VISIBILITY
- C - POP PANEL - PRODUCT GRAPHIC
- D - REAR PANEL FITTED WITH POPP-Out PANEL
- E - SUPPORTING "TIP TRAY" FOR PANELS (SELF ALIGNING)
- F - POPP-Out TAB HANDLE
- G - PAIRED MAGNETIC "LATCH" (MAGNETS EMBEDDED IN POP-Out PANEL & BACK OF MENU BOARD)

SALES PERSON:	DESIGNED BY:	A0:
MARK WESSELL	J KROEGER	35883

DATE CREATED / REVISION HISTORY	
2/23/22 - NEW	
4/8/22 - Permitting	

© 2020 Springfield Sign & Graphics Inc., Springfield Sign

This drawing is Copyrighted material, it remains the property of Springfield Sign unless otherwise agreed upon in writing. It is unlawful to use this drawing for bidding purposes, nor can it be reproduced, copied or used in the production of a sign without written permission from Springfield Sign & Graphics.

This is an artistic rendition and final colors / sizes may vary from that depicted herein.



SPRINGFIELD SIGN
www.springfieldsign.com

MB-DT-46 EXTERIOR MENU BOARD

LAKE CITY, FL

Blue Outdoor Drive-Thru Menu Board

MB-DT-46

Standard Menu Board for Drive-Thru Lane

LED Internal Illumination

POP Graphic panels must be purchased separately

POPP-Out magnet access panels included for easy in & out of POP panels

"-CS" option for 160mph coastal wind standards available

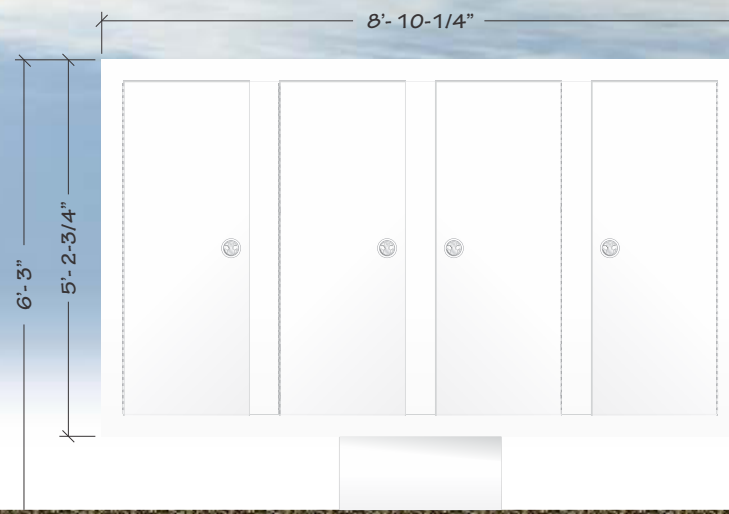
Locking rear access doors (4)

Culver's

FRONT



REAR

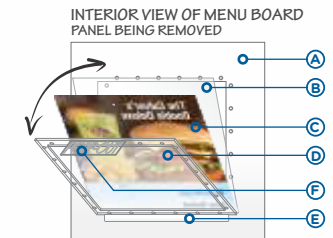


SCALE: 3/8" = 1'

*SCALE AND COLORS NOT REPRESENTATIVE FROM EMAIL ATTACHMENTS
*ALL MEASUREMENTS ARE APPROXIMATE

POPP-Out

Point Of Purchase Panel System



PANEL IN PLACE



- A - INSIDE BACK OF MENU BOARD FACE (ONLY ONE PANEL SHOWN FOR CLARITY)
- B - FRONT PANEL IS ANTI-GLARE (CLEAR) FOR INCREASED VISIBILITY
- C - POP PANEL - PRODUCT GRAPHIC
- D - REAR PANEL FITTED WITH POPP-Out PANEL
- E - SUPPORTING "TIP TRAY" FOR PANELS (SELF ALIGNING)
- F - POPP-Out TAB HANDLE
- G - PAIRED MAGNETIC "LATCH" (MAGNETS EMBEDDED IN POP-Out PANEL & BACK OF MENU BOARD)

SALES PERSON:
MARK WESSELL

DESIGNED BY:
J KROEGER

A0:
35883

DATE CREATED / REVISION HISTORY

2/23/22 - NEW
4/8/22 - Permitting

© 2020 Springfield Sign & Graphics Inc., Springfield Sign

This drawing is Copyrighted material, it remains the property of Springfield Sign unless otherwise agreed upon in writing. It is unlawful to use this drawing for bidding purposes, nor can it be reproduced, copied or used in the production of a sign without written permission from Springfield Sign & Graphics.

This is an artistic rendition and final colors / sizes may vary from that depicted herein.



ENVIRONMENTALLY
RESPONSIBLE



SPRINGFIELD SIGN

www.springfieldsign.com

MB-ID-84 INTERIOR MENU BOARD

LAKE CITY, FL

Blue Indoor Menu Board

MB-ID-84

Easy lift up & out graphic panel

American Beech Wood surround

Surround is painted black

LED internal illumination

Ultra low power consumption

FRONT VIEW



END VIEW



Culver's

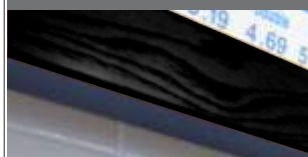
SCALE: 3/8" = 1'

*SCALE AND COLORS NOT REPRESENTATIVE FROM EMAIL ATTACHMENTS
*ALL MEASUREMENTS ARE APPROXIMATE

NOTES

MENU BOARD TO INSTALL CENTERED TO THE FRONT CASH REGISTER COUNTER

WOOD SURROUND



DATE CREATED / REVISION HISTORY

2/23/22 - NEW			
4/8/22 - Permitting			

SALES PERSON:
MARK WESSELL

DESIGNED BY:
J KROEGER

AO:
35883

© 2020 Springfield Sign & Graphics Inc., Springfield Sign

This drawing is Copyrighted material, it remains the property of Springfield Sign unless otherwise agreed upon in writing. It is unlawful to use this drawing for bidding purposes, nor can it be reproduced, copied or used in the production of a sign without written permission from Springfield Sign & Graphics.

This is an artistic rendition and final colors / sizes may vary from that depicted herein.



ENVIRONMENTALLY
RESPONSIBLE

 **SPRINGFIELD SIGN**
www.springfieldsign.com

REG-HC-1 PARKING SIGN

LAKE CITY, FL

Handicapped Parking Post & Panel Sign

REG-HC-1

All aluminum 0.080" thick panel

U-Channel steel post (green)

Bolted connection

Local codes may require actual copy/graphics to vary

Rounded corners for safety

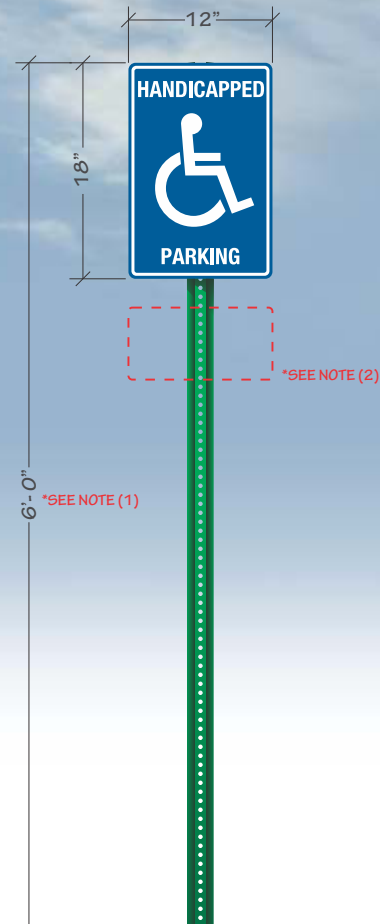
First surface vinyl (printed) copy

NOTE 1: Overall height can vary per local codes

NOTE 2: 6' x 12" sign panel may also be required

Culver's

SCALE: 3/4" = 1'



*SCALE AND COLORS NOT REPRESENTATIVE FROM EMAIL ATTACHMENTS
*ALL MEASUREMENTS ARE APPROXIMATE

ADDITIONAL PARKING SIGN PANELS

STANDARD FACE OPTIONS:



ADDITIONAL FACE OPTIONS:



SCALE: 1/2" = 1'

SALES PERSON:	DESIGNED BY:	A0:
MARK WESSELL	J KROEGER	35883

DATE CREATED / REVISION HISTORY	
2/23/22 - NEW	
4/8/22 - Permitting	

© 2020 Springfield Sign & Graphics Inc., Springfield Sign

This drawing is Copyrighted material, it remains the property of Springfield Sign unless otherwise agreed upon in writing. It is unlawful to use this drawing for bidding purposes, nor can it be reproduced, copied or used in the production of a sign without written permission from Springfield Sign & Graphics.

This is an artistic rendition and final colors / sizes may vary from that depicted herein.



SPRINGFIELD SIGN
www.springfieldsign.com

RR-1-G, RR-1-L, RR-3 RESTROOM SIGNS

LAKE CITY, FL

Restroom Signs

RR-1-G RR-1-L RR-3

RR-1 SERIES RESTROOM SIGNS

Injection molded plastic

ADA compliant

Raised braille

Self adhesive back

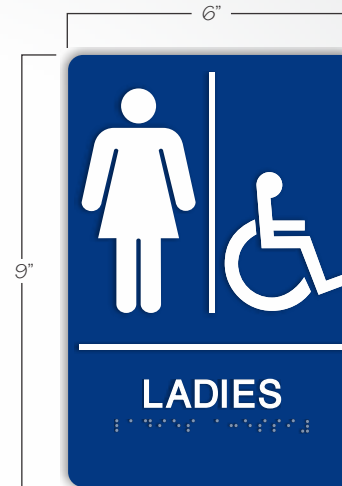
RR-3 SIGN

White aluminum substrate -
laminated with black core

Digitally printed blue copy routed
to shape



RR-1-G
GENTLEMEN



RR-1-L
LADIES



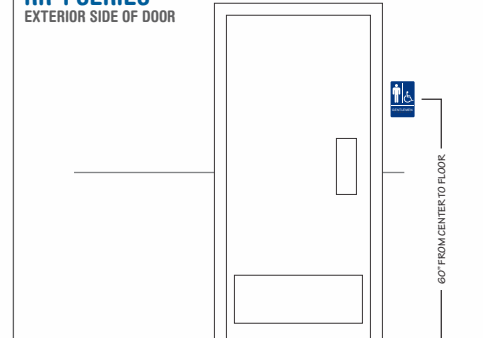
RR-3
LADIES

SCALE: 3" = 1'

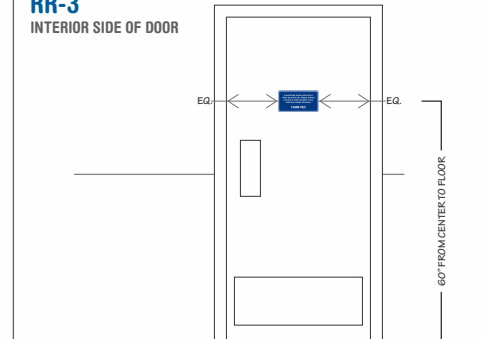
*SCALE AND COLORS NOT REPRESENTATIVE FROM EMAIL ATTACHMENTS
*ALL MEASUREMENTS ARE APPROXIMATE

SIGN MOUNTING LOCATIONS

RR-1 SERIES EXTERIOR SIDE OF DOOR



RR-3 INTERIOR SIDE OF DOOR



SCALE: 1-1/2" = 1'

SALES PERSON: MARK WESSELL	DESIGNED BY: J KROEGER	A0: 35883
-------------------------------	---------------------------	--------------

DATE CREATED / REVISION HISTORY	
2/23/22 - NEW	
4/8/22 - Permitting	



©2020 Springfield Sign & Graphics Inc., Springfield Sign

This drawing is Copyrighted material, it remains the property of Springfield Sign unless otherwise agreed upon in writing. It is unlawful to use this drawing for bidding purposes, nor can it be reproduced, copied or used in the production of a sign without written permission from Springfield Sign & Graphics.

This is an artistic rendition and final colors / sizes may vary from that depicted herein.



ENVIRONMENTALLY
RESPONSIBLE

 **SPRINGFIELD SIGN**
www.springfieldsign.com

V-1, V-5, V-6 DOOR & WINDOW VINYL

LAKE CITY, FL

Entry Door & Drive-Thru Vinyl Lettering

V-1-1
V-5-1
V-6

3M¹ HP white vinyl substrate

UV digitally printed image (blue)

Satin gloss over laminate

Contour cut

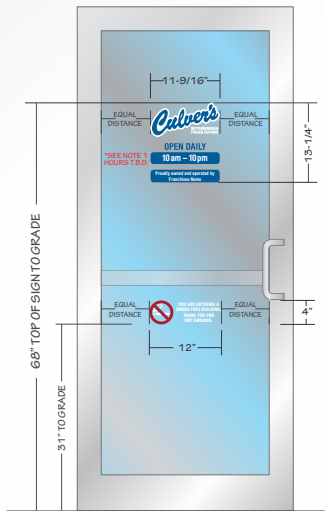
First surface application

NOTE 1: Business hours shown are typical. However, each location may be different than shown.

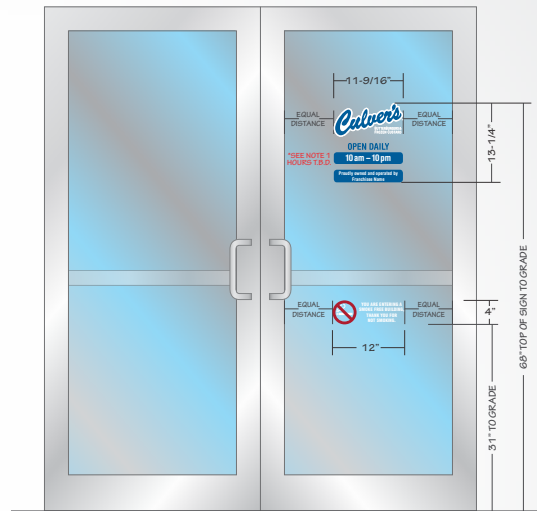
1 - 3M is a registered trademark of Minnesota Mining & Manufacturing

Culver's

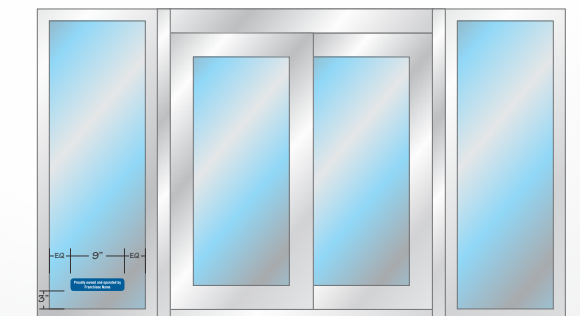
V-1-1 & V-6
TYPICAL SINGLE DOOR LAYOUT



V-1-1 & V-6
TYPICAL DOUBLE DOOR LAYOUT



V-5-1
TYPICAL DRIVE-THRU LAYOUT

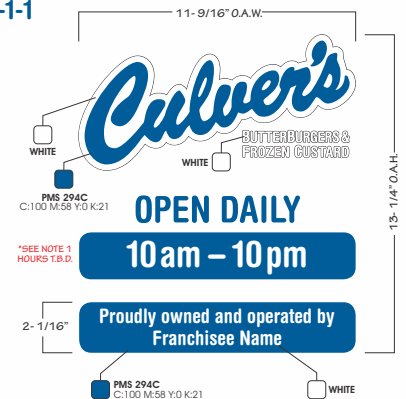


SCALE: 3/8" = 1'

*SCALE AND COLORS NOT REPRESENTATIVE FROM EMAIL ATTACHMENTS
*ALL MEASUREMENTS ARE APPROXIMATE

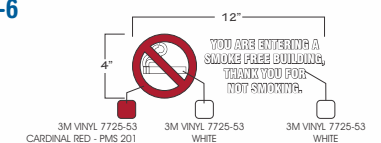
SIGN SPECIFICATIONS

V-1-1



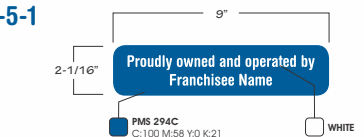
SCALE: 1-1/2" = 1'

V-6



SCALE: 1-1/2" = 1'

V-5-1



SCALE: 1-1/2" = 1'

SALES PERSON:	DESIGNED BY:	AO:
MARK WESSELL	J KROEGER	35883

DATE CREATED / REVISION HISTORY
2/23/22 - NEW
4/8/22 - Permitting

©2020 Springfield Sign & Graphics Inc., Springfield Sign

This drawing is Copyrighted material, it remains the property of Springfield Sign unless otherwise agreed upon in writing. It is unlawful to use this drawing for bidding purposes, nor can it be reproduced, copied or used in the production of a sign without written permission from Springfield Sign & Graphics.

This is an artistic rendition and final colors / sizes may vary from that depicted herein.



SPRINGFIELD SIGN
www.springfieldsign.com

VHD-1 VEHICLE HEIGHT DETECTOR

LAKE CITY, FL

Vehicle Height Detector for Drive-Thru Lane

VHD-1

All steel (painted) construction

Re-settable if engaged

Used to help protect canopies from advancing vehicles that are too tall

NOTE: Clearance height must be verified prior to mfg.

*SEE NOTE

9' 6" CLEARANCE

9' 6"

SCALE: 1/2" = 1'

*SCALE AND COLORS NOT REPRESENTATIVE FROM EMAIL ATTACHMENTS
*ALL MEASUREMENTS ARE APPROXIMATE

CLEARANCE PANEL

*SEE NOTE

5"
40"
9' 6" CLEARANCE

SCALE: 1" = 1'

SALES PERSON:
MARK WESSELL

DESIGNED BY:
J KROEGER

A0:
35883

DATE CREATED / REVISION HISTORY

2/23/22 - NEW
4/8/22 - Permitting

Culver's

© 2020 Springfield Sign & Graphics Inc., Springfield Sign

This drawing is Copyrighted material, it remains the property of Springfield Sign unless otherwise agreed upon in writing. It is unlawful to use this drawing for bidding purposes, nor can it be reproduced, copied or used in the production of a sign without written permission from Springfield Sign & Graphics.

This is an artistic rendition and final colors / sizes may vary from that depicted herein.



ENVIRONMENTALLY RESPONSIBLE



SPRINGFIELD SIGN

www.springfieldsign.com

VHD-1 VEHICLE HEIGHT DETECTOR

LAKE CITY, FL

Vehicle Height Detector for Drive-Thru Lane

VHD-1

All steel (painted) construction

Re-settable if engaged

Used to help protect canopies from advancing vehicles that are too tall

NOTE: Clearance height must be verified prior to mfg.

*SEE NOTE

9' 6" CLEARANCE

9' 6"

SCALE: 1/2" = 1'

*SCALE AND COLORS NOT REPRESENTATIVE FROM EMAIL ATTACHMENTS
*ALL MEASUREMENTS ARE APPROXIMATE

CLEARANCE PANEL

*SEE NOTE

5"
40"
9' 6" CLEARANCE

SCALE: 1" = 1'

SALES PERSON:
MARK WESSELL

DESIGNED BY:
J KROEGER

A0:
35883

DATE CREATED / REVISION HISTORY

2/23/22 - NEW
4/8/22 - Permitting

Culver's

© 2020 Springfield Sign & Graphics Inc., Springfield Sign

This drawing is Copyrighted material, it remains the property of Springfield Sign unless otherwise agreed upon in writing. It is unlawful to use this drawing for bidding purposes, nor can it be reproduced, copied or used in the production of a sign without written permission from Springfield Sign & Graphics.

This is an artistic rendition and final colors / sizes may vary from that depicted herein.



ENVIRONMENTALLY
RESPONSIBLE



SPRINGFIELD SIGN

www.springfieldsign.com