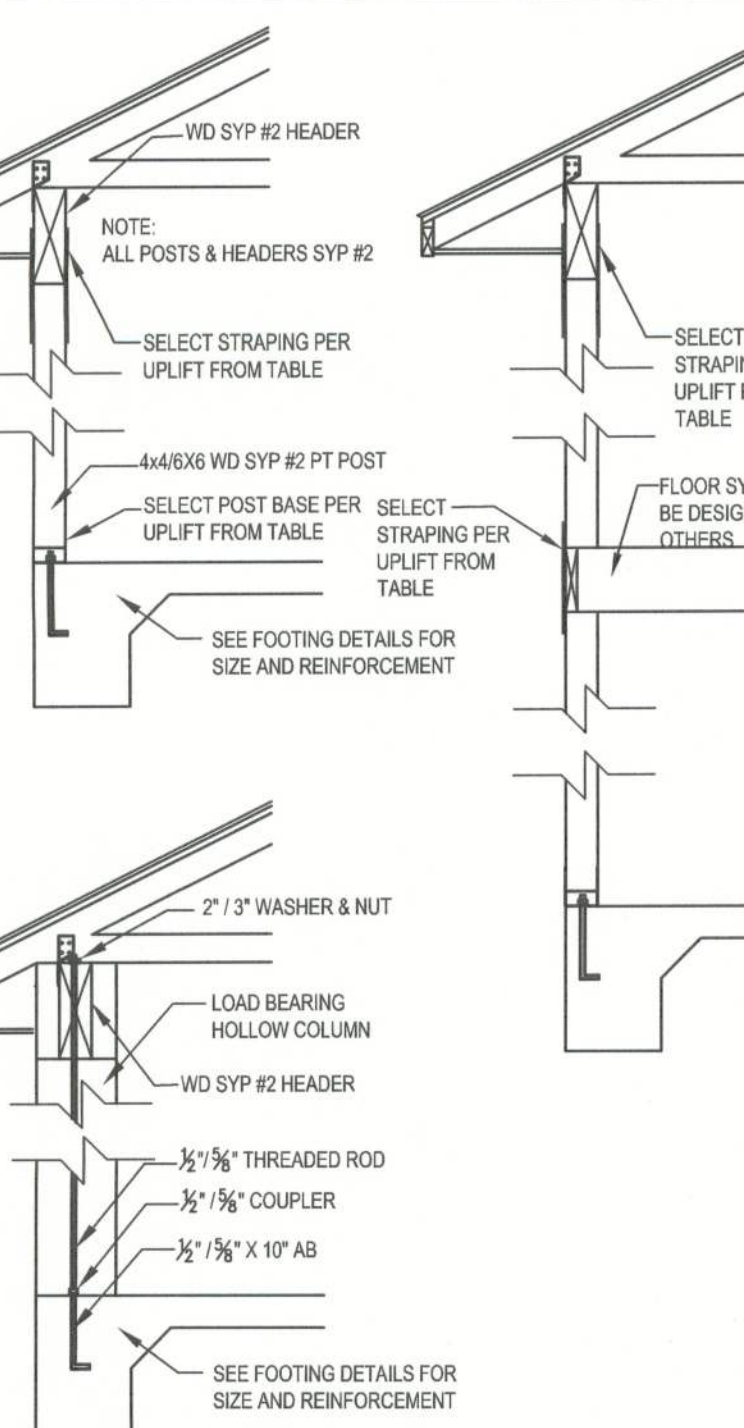


STUD ANCHOR TABLE			
TYPICAL TRUSS UPLIFT & MAX 16" FT WALL HEIGHT	ANCHOR BOLT SPACING	SP4 / SP5 SPACING	ALTERNATE SP4/SP5/SP6 SPACING
770 LB	48" O.C.	48" O.C.	N/A
950 LB	48" O.C.	32" O.C.	N/A
1270 LB	32" O.C.	16" O.C.	32" O.C.
1590 LB	32" O.C.	16" O.C.	16" O.C.
2200 LB	LTT11 W/ 8"x1" WEDGE ANCHOR	N/A	(2) HTS20 NAILED TO STUD ANCHOR

NOTE: SP2 TOP & SP1 BOTTOM ALTERNATE FOR SP4/6

NOTE: MINIMUM ANCHOR BOLT SPACING FOR WALLS WITH A HEIGHT GREATER THAN 10'-0" AND LESS THAN 14'-0" SHALL BE 32" O.C.

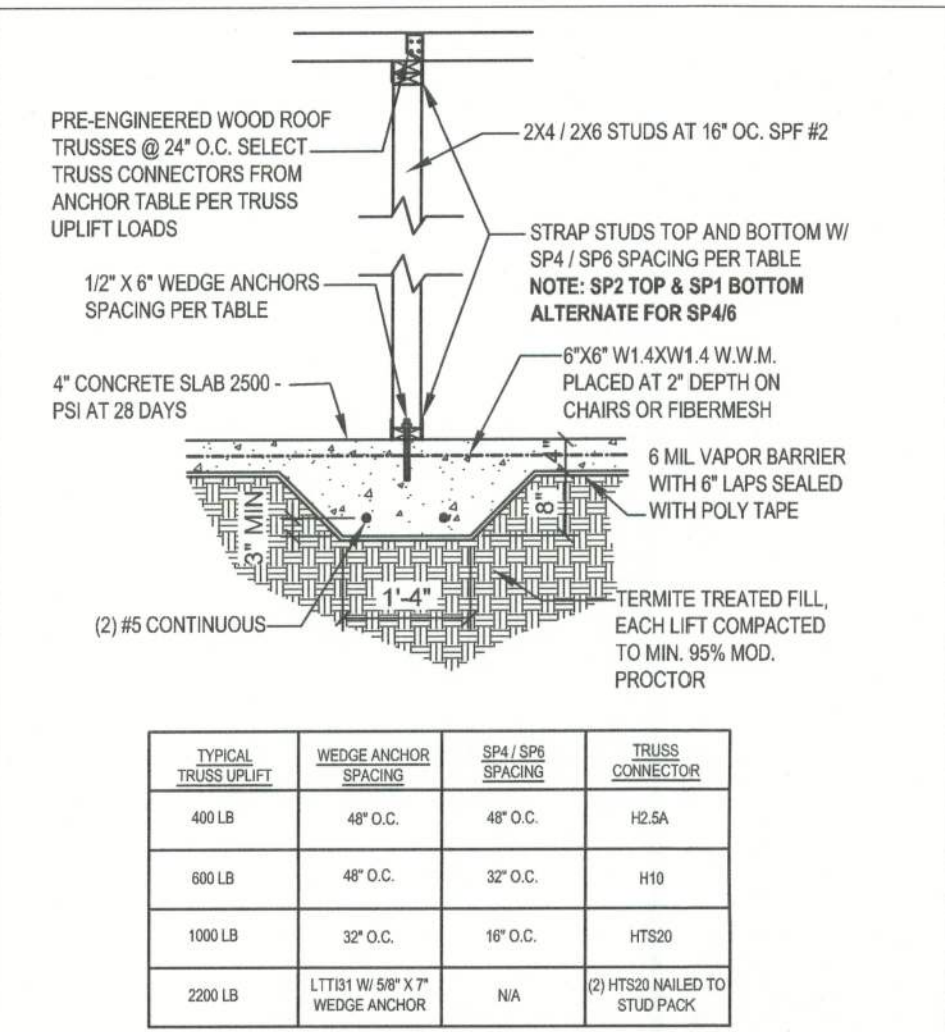
W1 - SINGLE STORY EXT. WALL SECTION  
SCALE: 1/2"=1'-0" REV-22-AUG-03



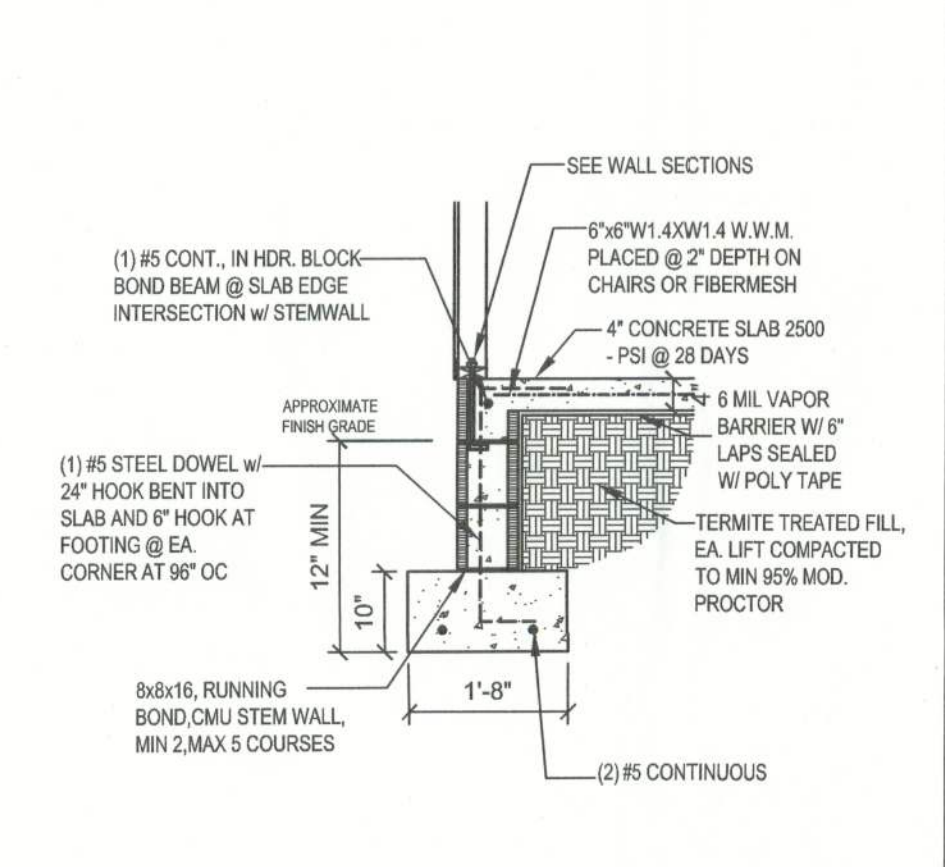
SYP #2 PT POSTS			
TYPICAL TRUSS UPLIFT	POST BASE ANCHOR	BETWEEN FLOOR STRAPPING	HEADER STRAPPING
555 LB	ABAA W/ (B-16) & 1/2" AB	(1) LSTA21 W/ (B-16) EA.	(1) LSTA21 W/ (B-16) EA.
720 LB	ABAA W/ (B-16) & 3/8" AB	(1) LSTA21 W/ (B-16) EA.	(1) LSTA21 W/ (B-16) EA.
2200 LB	ABAA W/ (B-16) & 3/8" AB	(1) LSTA21 W/ (B-16) EA.	(1) LSTA21 W/ (B-16) EA.
2300 LB	ABAA W/ (B-16) & 3/8" AB	(1) LSTA21 W/ (B-16) EA.	(1) LSTA21 W/ (B-16) EA.

HOLLOW COLUMN			
TYPICAL TRUSS UPLIFT	POST BASE ANCHOR	BETWEEN FLOOR STRAPPING	HEADER STRAPPING
1500 LB	1/2" X 10" AB ATTACHED TO 1/2" THREADED ROD WITH 1/2" COUPLER THROUGH COLUMN & HEADER WITH 2" WASHER & NUT TOP	(1) LSTA21 W/ (B-16) EA.	(1) LSTA21 W/ (B-16) EA.
2300 LB	1/2" X 10" AB ATTACHED TO 1/2" THREADED ROD WITH 1/2" COUPLER THROUGH COLUMN & HEADER WITH 2" WASHER & NUT TOP	(1) LSTA21 W/ (B-16) EA.	(1) LSTA21 W/ (B-16) EA.

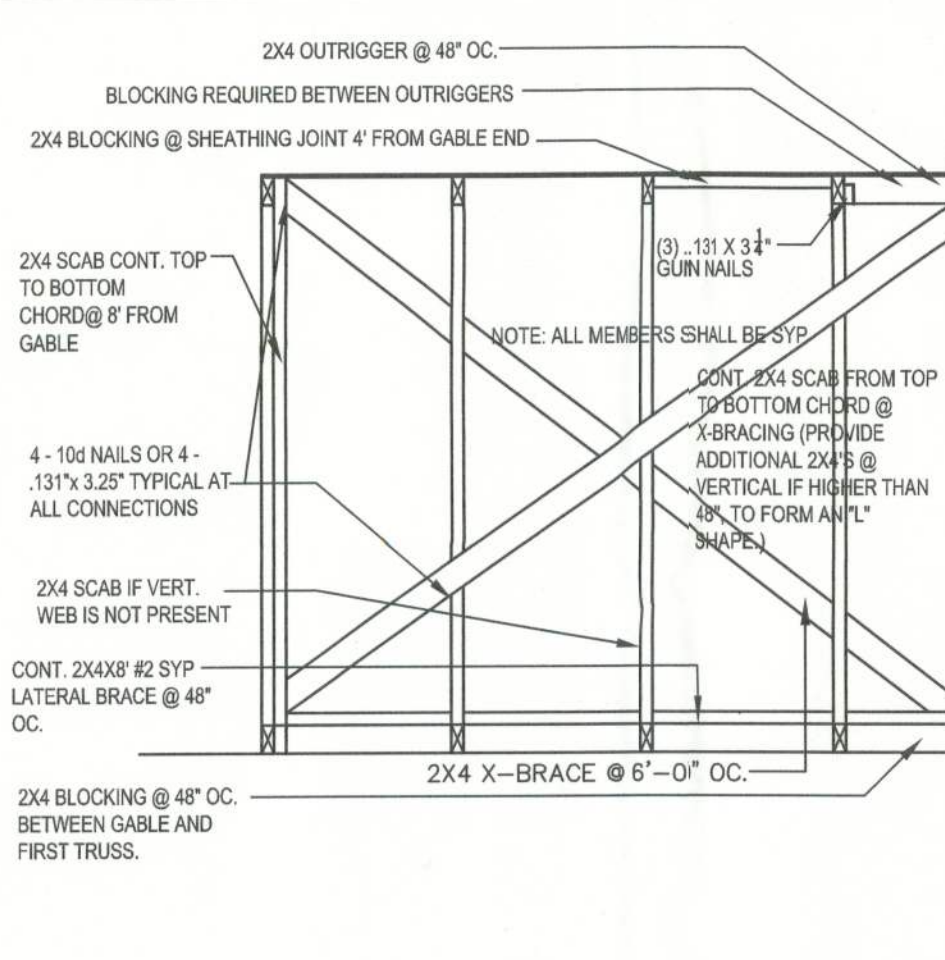
W12 - PORCH HEADER ANCHORS  
SCALE: N.T.S. REV-18-JUL-03



F4 - INTERIOR BEARING FOOTING  
SCALE: 1/2"=1'-0" REV-22-AUG-03



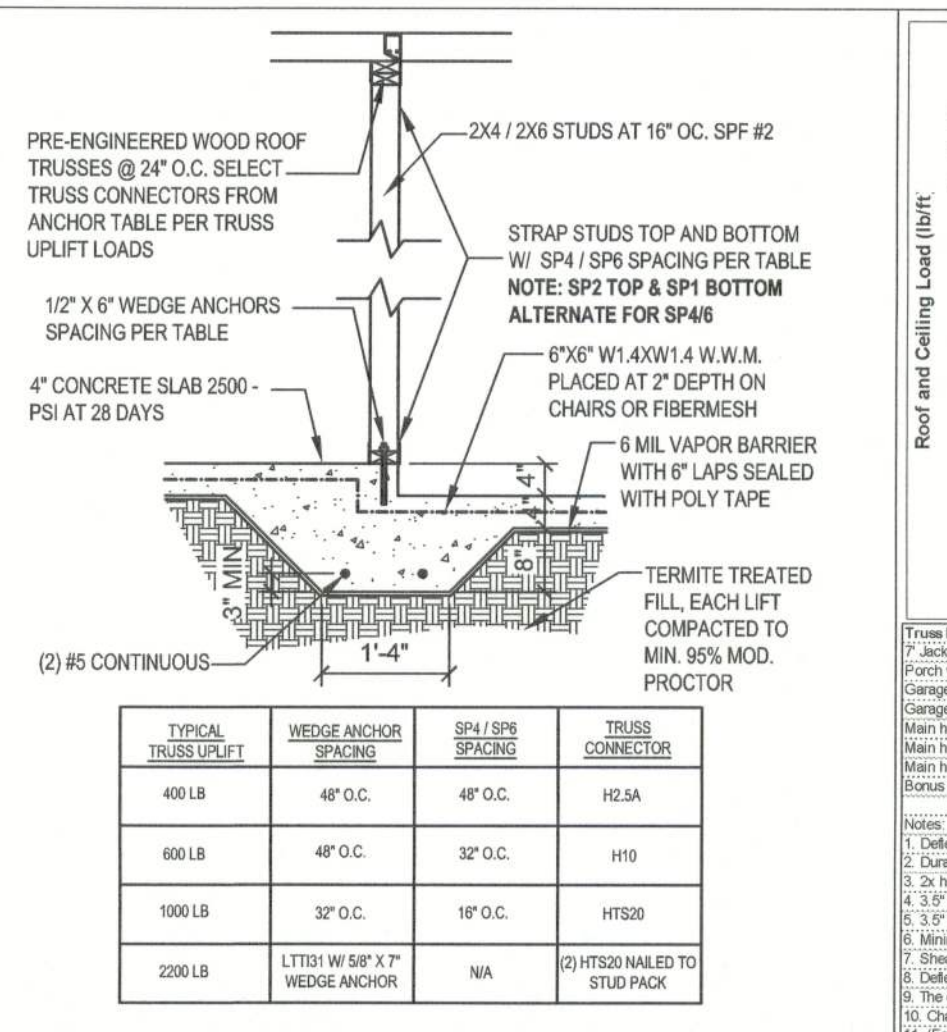
F1 - STEM WALL FOUNDATION  
SCALE: 1/2"=1'-0" REV-27-MAY-03



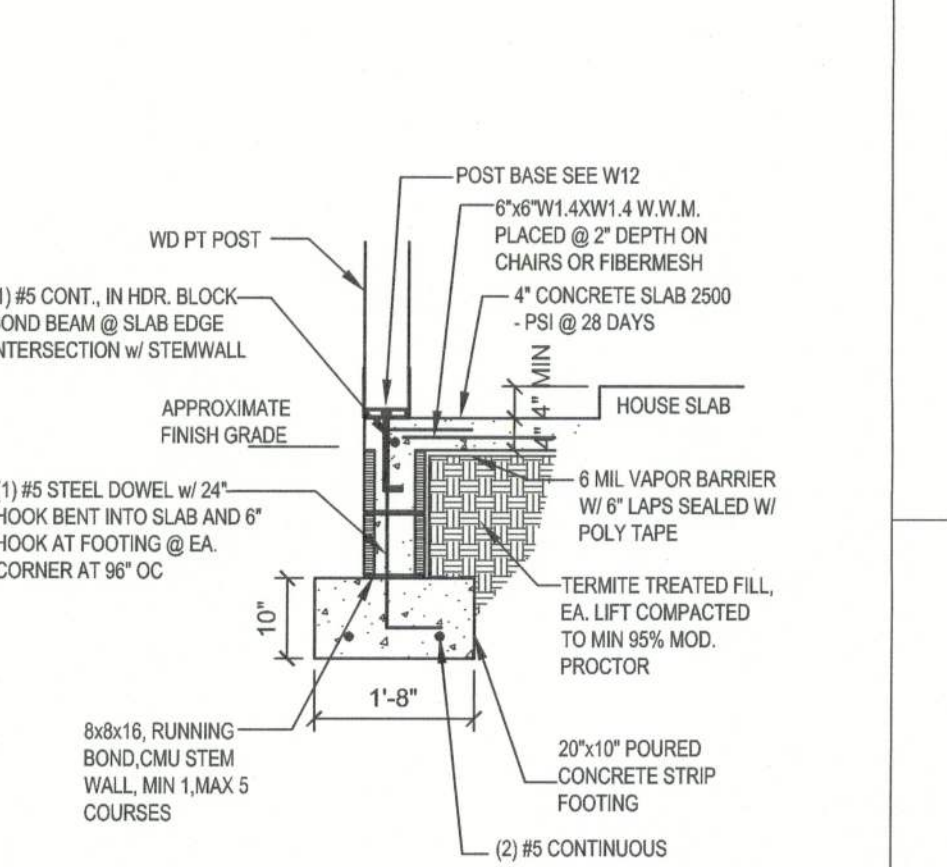
F10 - STEM WALL PORCH FOOTING  
SCALE: 1/2"=1'-0" REV-16-MAY-03



W10 - TYPICAL GABLE END (X-BRACING)  
SCALE: 1/2"=1'-0"



F5 - INTERIOR BEARING STEP FOOTING  
SCALE: 1/2"=1'-0" REV-22-AUG-03



F2 - PORCH SLAB  
SCALE: 1/2"=1'-0" REV-22-AUG-03

