



CODE INFORMATION

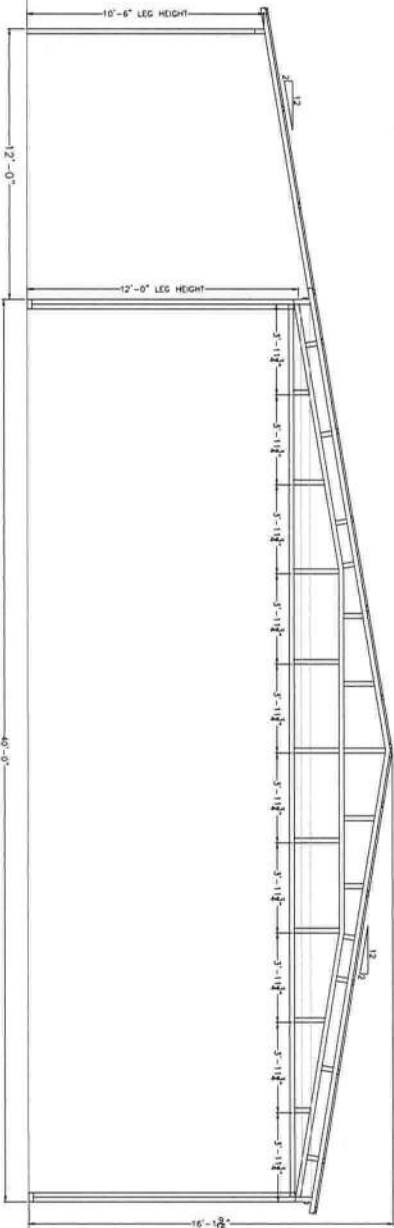
CODE VERSION	FBC 2020 7th Edition
MANUFACTURER	CARPORTS ANYWHERE
BUILDING TYPE	UTILITY STRUCTURE
CONSTRUCTION TYPE	II-B
RISK CATEGORY	I
FIRE PROTECTION	NONE
FIRE SUPPRESSION SYSTEM	NONE
OCCUPANCY	UTILITY, U
WIND SPEED	VIII-140mph
EXPOSURE	B
ENCLOSURE	ENCLOSED/OPEN
INTERNAL PRESSURE COEFF.	+/- 0.18/0.0
IMPORTANCE FACTOR	1.0
ROOF DEAD LOAD	10PSF
ROOF LIVE LOAD	20PSF OR 300lb P.L.
FLOOR DEAD LOAD	10PSF
FLOOR LIVE LOAD	50PSF
TR. RATING OF WALLS/FLOOR/ROOF N/A	
MODULES PER BUILDING	1
HURRICANE PROTECTION USAGE	NO
HURRICANE SHELTER USAGE	NO
SQUARE FOOTAGE	3,080 SQ. FT.

REV	DESCRIPTION	DATE	BY
-----	-------------	------	----

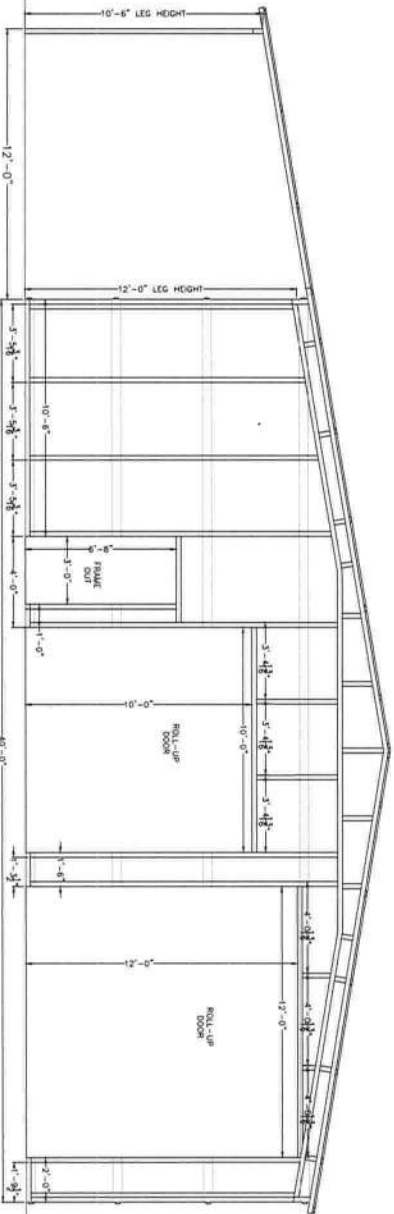
DESIGNED BY	MTB
DATE	12/2/22
PROJECT	165 NW Open Ct., Lake City
SITE	65' L x 52' W x 12' H

END FRAMING VIEWS	
Sheet	CA-2 OF 6
Matthew T. Baldwin P.E. Florida License #64608	

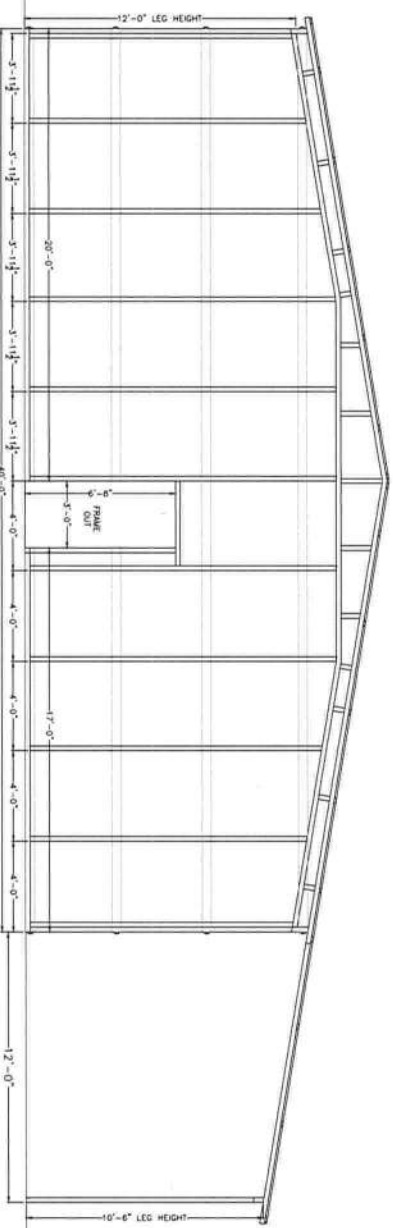
FRONT END WALL



MID END WALL



REAR END WALL



THIS ITEM HAS BEEN DIGITALLY SIGNED AND SEALED BY MATTHEW BALDWIN, P.E., ON 12/2/2022.
PRINTED COPIES OF THIS DOCUMENT ARE NOT CONSIDERED SIGNED AND SEALED AND THE SHA
AUTHENTICATION CODE MUST BE VERIFIED ON ANY ELECTRONIC COPIES.



CODE INFORMATION

CODE	VERSION	REVISION
MANUFACTURER	ASCO 2020 7th Edition	ASCO-2-16
BUILDING TYPE	CONSTRUCTION TYPE	CORROSION ANYWHERE
RISK CATEGORY	UTILITY STRUCTURE	II - B
FIRE PROTECTION	NO	NO
FIRE SUPPRESSION SYSTEM	NO	NO
OCCUPANCY	Utility, U	Utility, U
WIND SPEED	Occul-140mph	B
EXPOSURE	ENCLOSED/OPEN	ENCLOSED/OPEN
ENCLOSURE	1.0 / 0.18/0.0	1.0 / 0.18/0.0
INTERNAL PRESSURE COEFF.	1.0	1.0
IMPORTANCE FACTOR	100PSF	100PSF
ROOF DEAD LOAD	200PSF	200PSF
ROOF LIVE LOAD	3000 P.L.	3000 P.L.
FLOOR DEAD LOAD	100PSF	100PSF
FLOOR LIVE LOAD	50PSF	50PSF
TRAINING OF WALLS/FLOOR/ROOF	IV/A	IV/A
MODULES PER BUILDING	1	1
HURRICANE PROTECTION USAGE	NO	NO
HURRICANE SHELTER USAGE	3.080 SD FL.	3.080 SD FL.
SOILS/FLOOYAE		

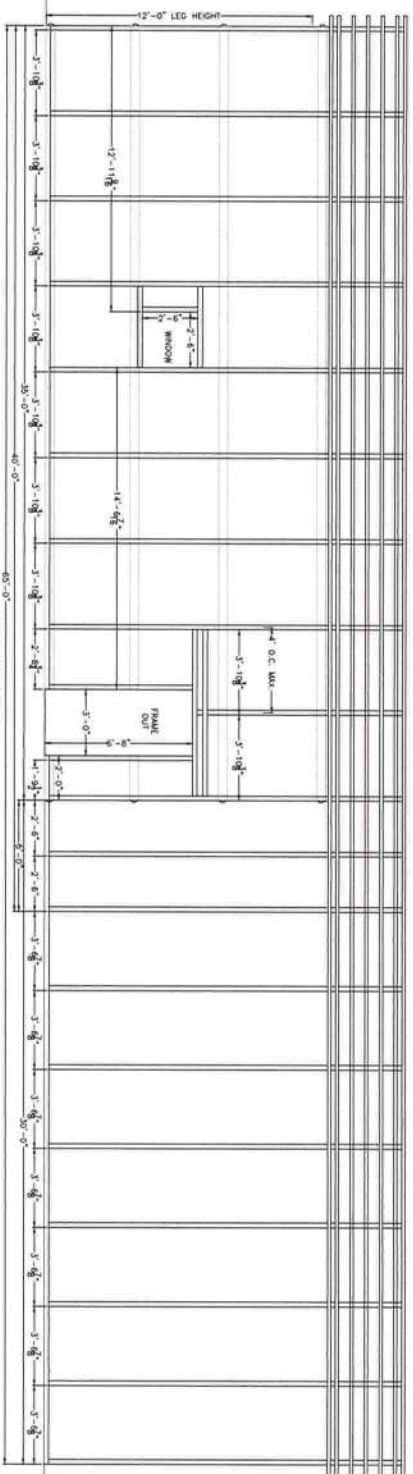
[illegible]

BOARD BY:	MTB
DATE:	12/2/22
LOCATION:	165 NW Open Ct, Lake City
SIZE:	65'L X 52'W X 12'H

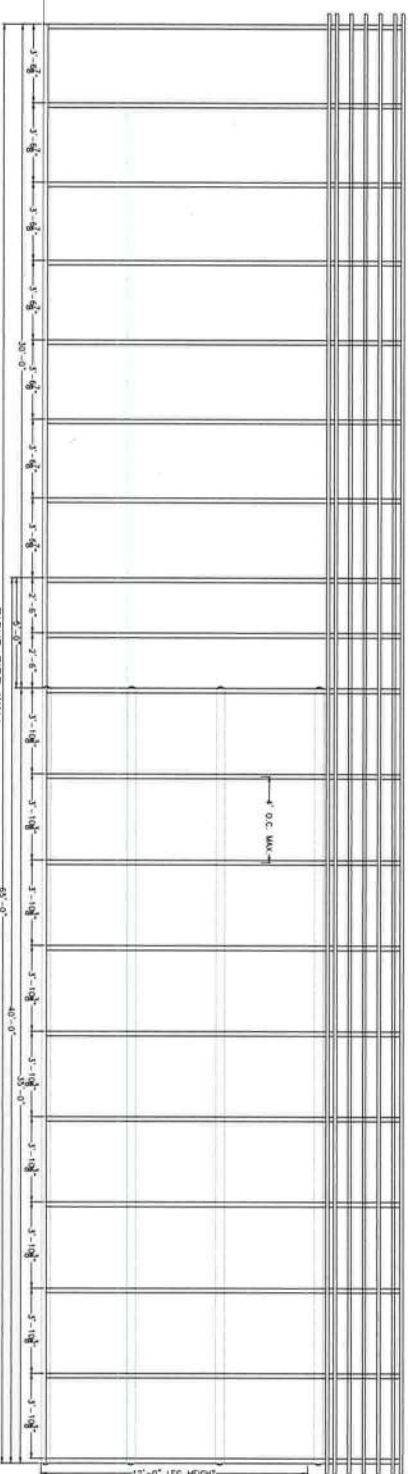
SIDE FRAMING VIEWS

Matthew T. Baldwin P.E.
Florida License #64608

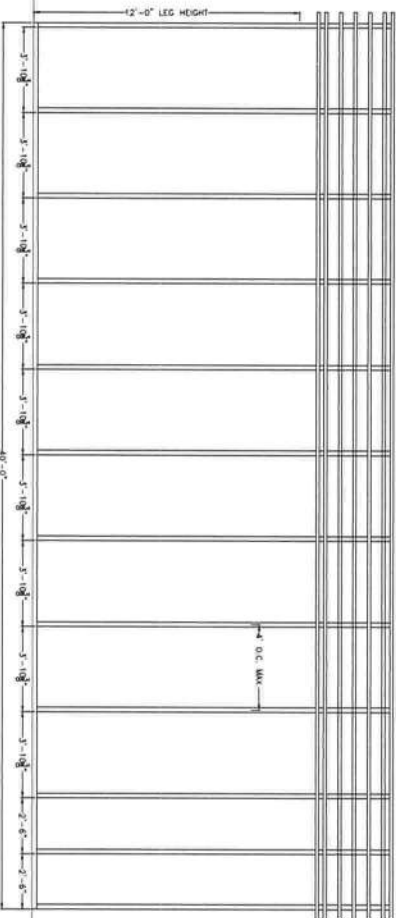
Sheet: CA-3 OF 6



LEFT SIDE WALL



RIGHT SIDE WALL



LEFT SIDE LEAN-TO WALL

THIS ITEM HAS BEEN DIGITALLY SIGNED AND SEALED BY MATTHEW BALDWIN, PE, ON 12/2/2022
PRINTED COPIES OF THIS DOCUMENT ARE NOT CONSIDERED SIGNED AND SEALED AND THE SHA
AUTHENTICATION CODE MUST BE VERIFIED ON ANY ELECTRONIC COPIES.

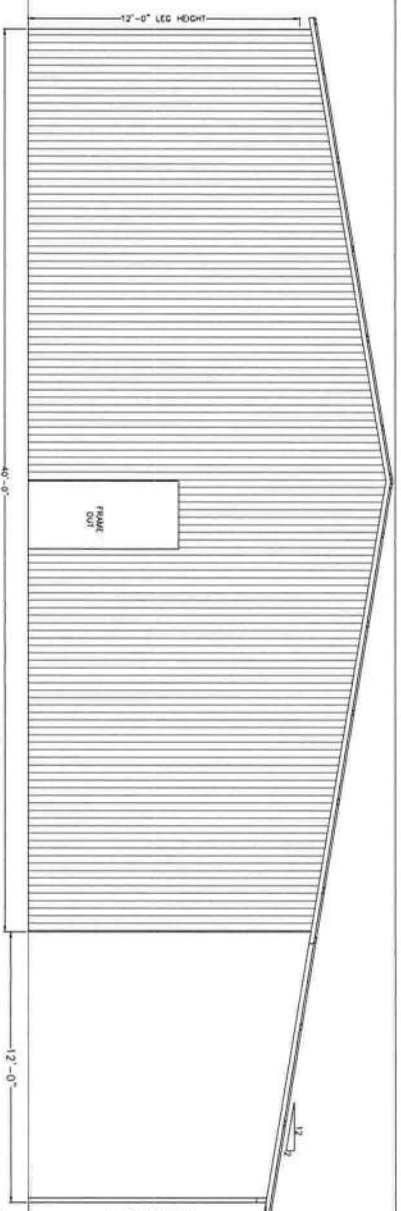
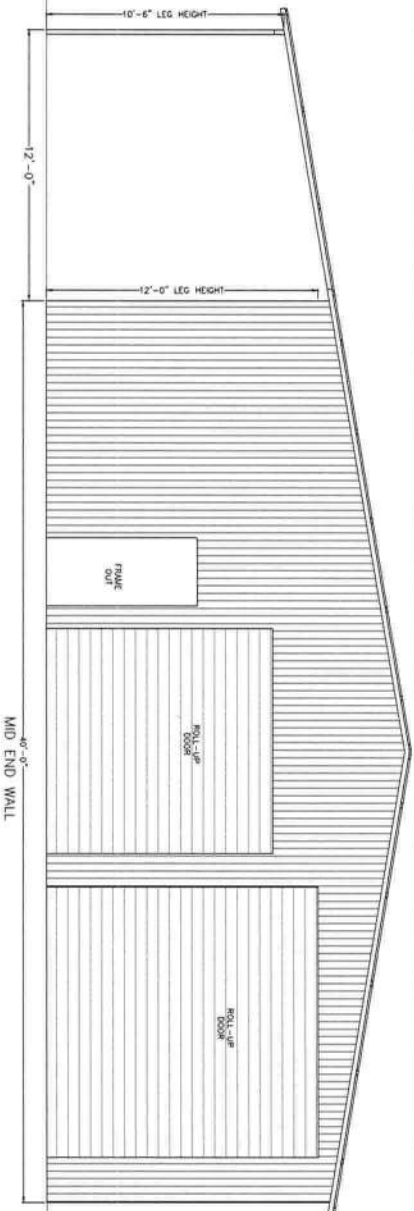
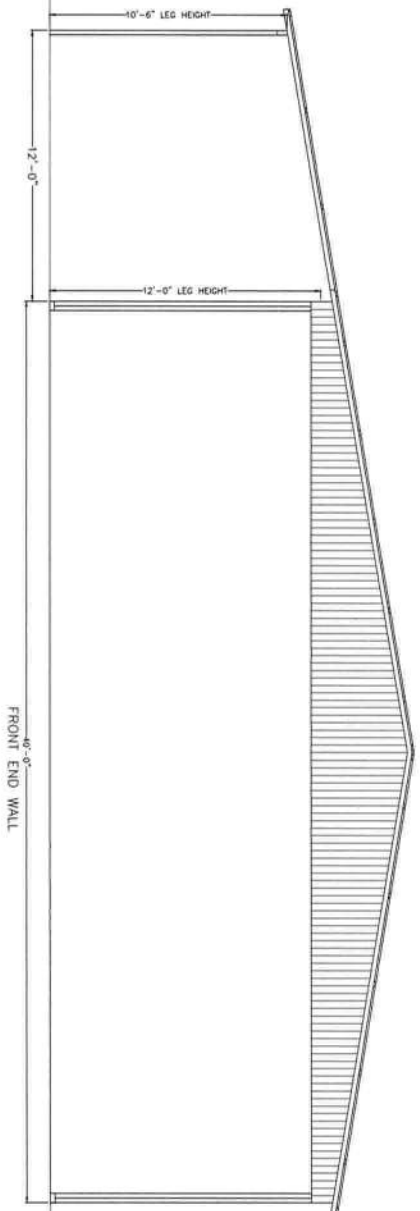
[illegible][illegible]

COPIES BY:	MTB
DATE:	12/2/22
LOCATION:	165 NW Open Ct, Lake City
SIZE:	65" L X 52" W X 12" H

TITLE: END VIEWS

Matthew T. Baldwin P.E.
Florida License #64608

Sheet: CA-4 OF 6



REAR END WALL

THIS ITEM HAS BEEN DIGITALLY SIGNED AND SEALED BY MATTHEW BALDWIN, PE, ON 12/2/2022. PRINTED COPIES OF THIS DOCUMENT ARE NOT CONSIDERED SIGNED AND SEALED AND THE SHA AUTHENTICATION CODE MUST BE VERIFIED ON ANY ELECTRONIC COPIES.



CODE INFORMATION	
CODE VERSION	IBC 2010 7th Edition
MANUFACTURER	CARBONIX ANYWHERE
BUILDING TYPE	UTILITY STRUCTURE
CONSTRUCTION TYPE	I-B
RISK CATEGORY	1
FIRE PROTECTION	NONE
FIR SUPPRESSION SYSTEM	NONE
OCCUPANCY	UTILITY U
WIND SPEED	Vel=140mph B
ENCLOSURE	ENCLOSED/OPEN
INTERNAL PRESSURE COEFF.	+/- 0.18/0.0
IMPORTANCE FACTOR	1.0
ROOF DEAD LOAD	10PSF
ROOF LIVE LOAD	20PSF OR 300lb P.L.
FLOOR DEAD LOAD	10PSF
FLOOR LIVE LOAD	50PSF
R RAINING OF WALLS/FLOOR ROOF	N/A
MODULUS PER BUILDING	1
HURRICANE PROTECTION USAGE	NO
HURRICANE SHELTER USAGE	NO
SQUARE FOOTAGE	3,080 SQ. FT.

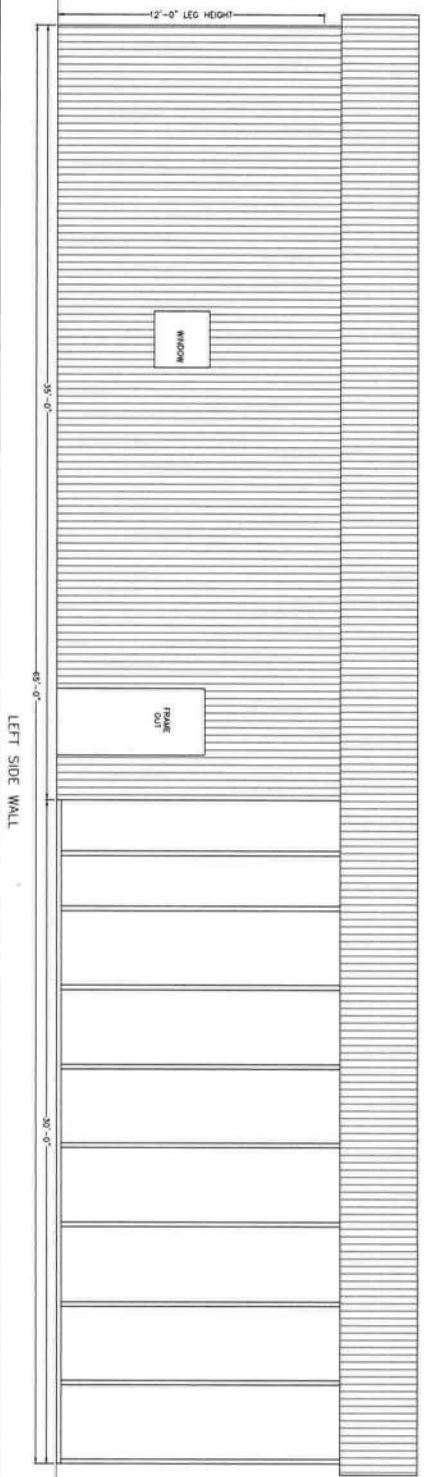
[illegible]

DATE:	12/2/22
LOCATION:	165 NW Open Ct, Lake City
SIZE:	65'L X 52'W X 12'H

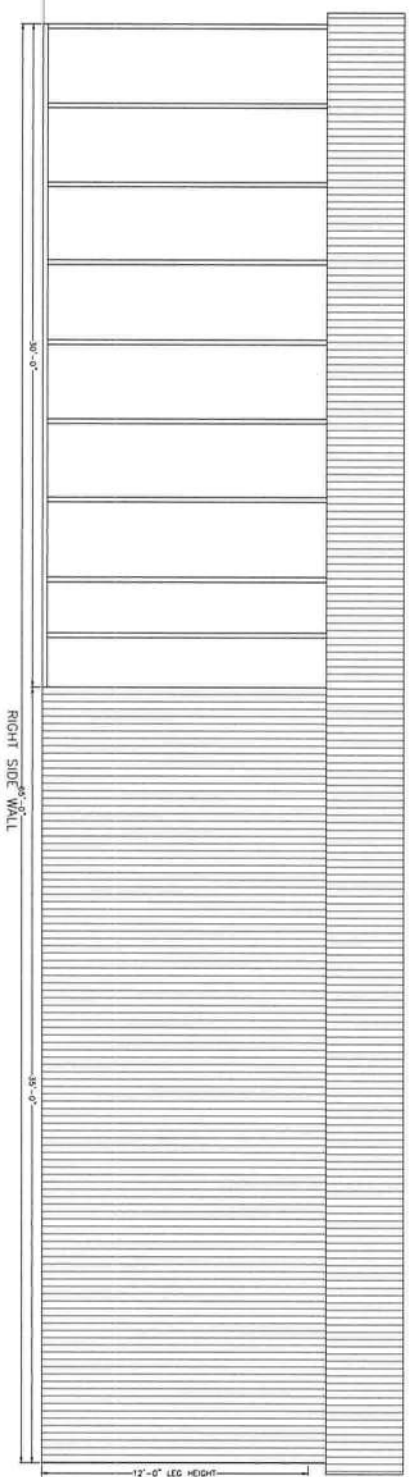
SIDE VIEWS

Matthew T. Baldwin P.E.
Florida License #64608

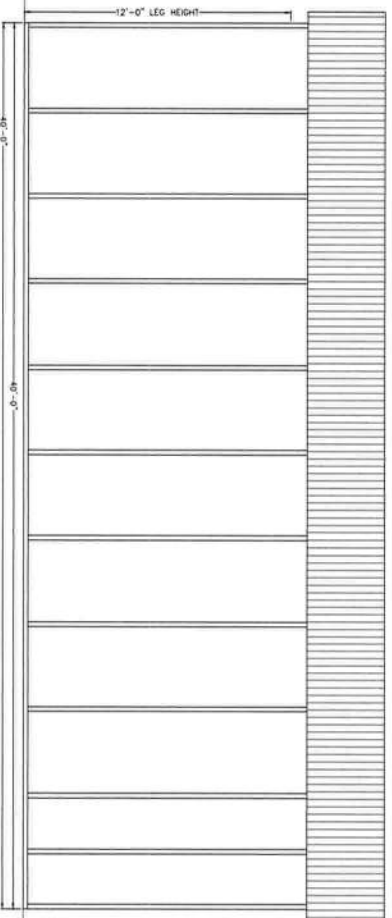
Sheet: CA-5 OF 6



LEFT SIDE WALL

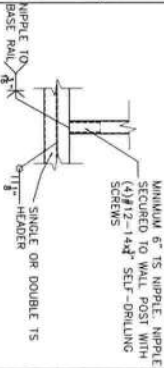


RIGHT SIDE WALL



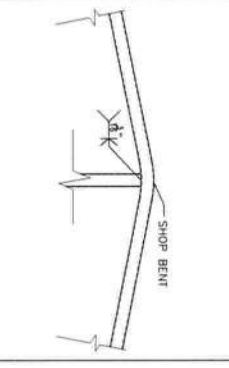
LEFT SIDE LEAN-TO WALL

THIS ITEM HAS BEEN DIGITALLY SIGNED AND SEALED BY MATTHEW BALDWIN, PE, ON 12/2/2022.
PRINTED COPIES OF THIS DOCUMENT ARE NOT CONSIDERED SIGNED AND SEALED AND THE SHA
AUTHENTICATION CODE MUST BE VERIFIED ON ANY ELECTRONIC COPIES.

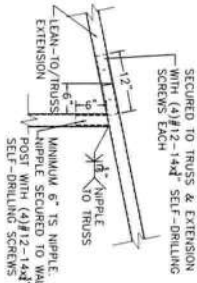


HEADER CONNECTION DETAIL

OPTION 2



RAILIER CONNECTION DETAIL



LEAN-TO TO TRUSS CONNECTION

APPROVED PRODUCTS	APPROVAL NO.
ROOF SHEATHING Corports Anywhere Hampton Rib Roof Panel	FL27402.1
WALL SHEATHING Corports Anywhere Hampton Rib Wall Panel	FL27403.1
ROLL-UP DOOR JANUS INTERNATIONAL CORPORATION SERIES 3652	FL14425.1
WINDOW SILVER LINE BUILDING PRODUCTS CORP. VI SERIES/70 SERIES (2127)	FL14911.5

THIS ITEM HAS BEEN DIGITALLY SIGNED AND SEALED BY MATTHEW BALDWIN, PE, ON 12/2/2022
PRINTED COPIES OF THIS DOCUMENT ARE NOT CONSIDERED SIGNED AND SEALED AND THE SHA
AUTHENTICATION CODE MUST BE VERIFIED ON ANY ELECTRONIC COPIES.

CODE VERSION	ABC 2010 7th Edition
MANUFACTURER	CARBONITE ANYWHERE
BUILDING TYPE	JULIY STRUCTURE
CONSTRUCTION TYPE	I-II-B
RISK CATEGORY	I
FIRE PROTECTION	NONE
FIRE SUPPRESSION SYSTEM	NONE
OCCUPANCY	JULIY, U
WIND SPEED	Vult-140mph
EXPOSURE	B

Matthew T. Boldwin, P.E.
Florida License #64608

Sheet: CA-6 OF 6