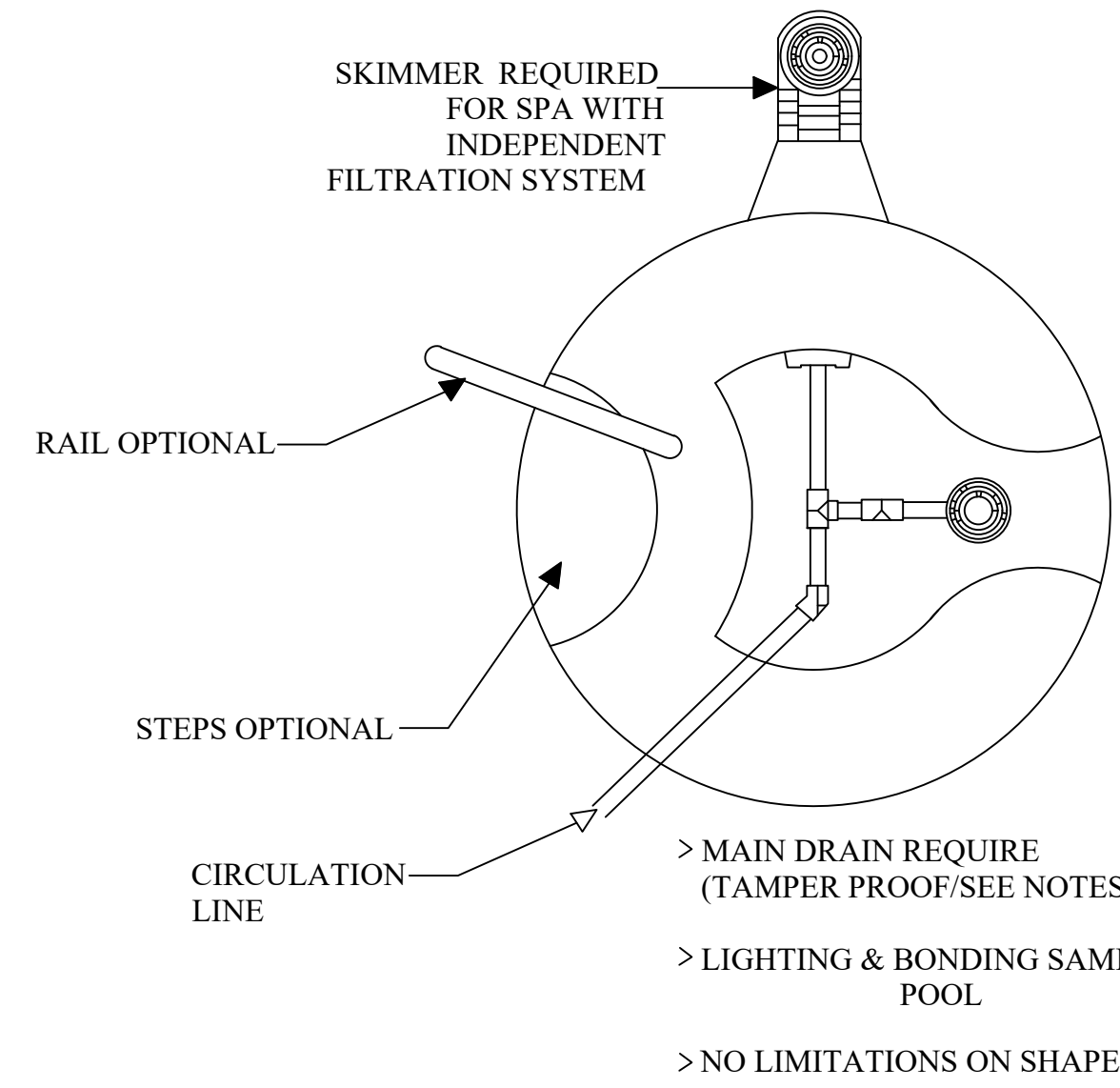


GENERAL POOL PLAN

N.T.S.



GENERAL SPA PLAN

N.T.S.

FLORIDA BUILDING CODE R4501

THE POOL CONTRACTOR IS RESPONSIBLE FOR FURNISHING ALL DETAIL DESIGN REQUIREMENTS FOR EACH INDIVIDUAL POOL IN ACCORDANCE WITH THE FLORIDA BUILDING CODE, AND ALL CONSTRUCTION SHALL MEET ALL APPLICABLE CODES INCLUDING PLUMBING, ELECTRICAL AND GAS. PIPING SHALL BE SCH. 40 PVC, NSFpw, MAX. PRESSURE VELOCITY 10 FPS, SUCTION 6 FPS. THE POOL PLAN SHALL SHOW THE DESIGN PLUMBING AS PER THE SAMPLE WITH THE INFORMATION REQUIRED SHOWN. MAIN DRAIN PLUMBING SHALL BE TWO DRAINS SEPARATED BY 3' WITH APPROVED ANSI/ASME A112.19.8.2009 COVERS. AS AN ALTERNATE THE APPROVED DRAINS MAY BE PLACED ON DIFFERENT PLANES. THE TWO DRAINS SHALL HAVE A COMMON SUCTION LINE. SUCTION GRATES MAY BE USED IF APPROVED AT A MAXIMUM OF 1 1/2 FPS AND THE SUCTION PIPING IS RECESSED FROM THE GRATE THE DISTANCE EQUAL TO THE SUCTION PIPE SIZE. SKIMMERS DO NOT REQUIRE PROTECTION AND MUST BE DESIGNED FOR A MINIMUM 25 gpm. THE FOLLOWING SHALL BE LABELED WITH LABEL MARKER TAPE AT THE FILTER LOCATION: PIPES, VALVES, PUMP(S) OFF SWITCH.

SPECIAL SPA REQUIREMENTS:

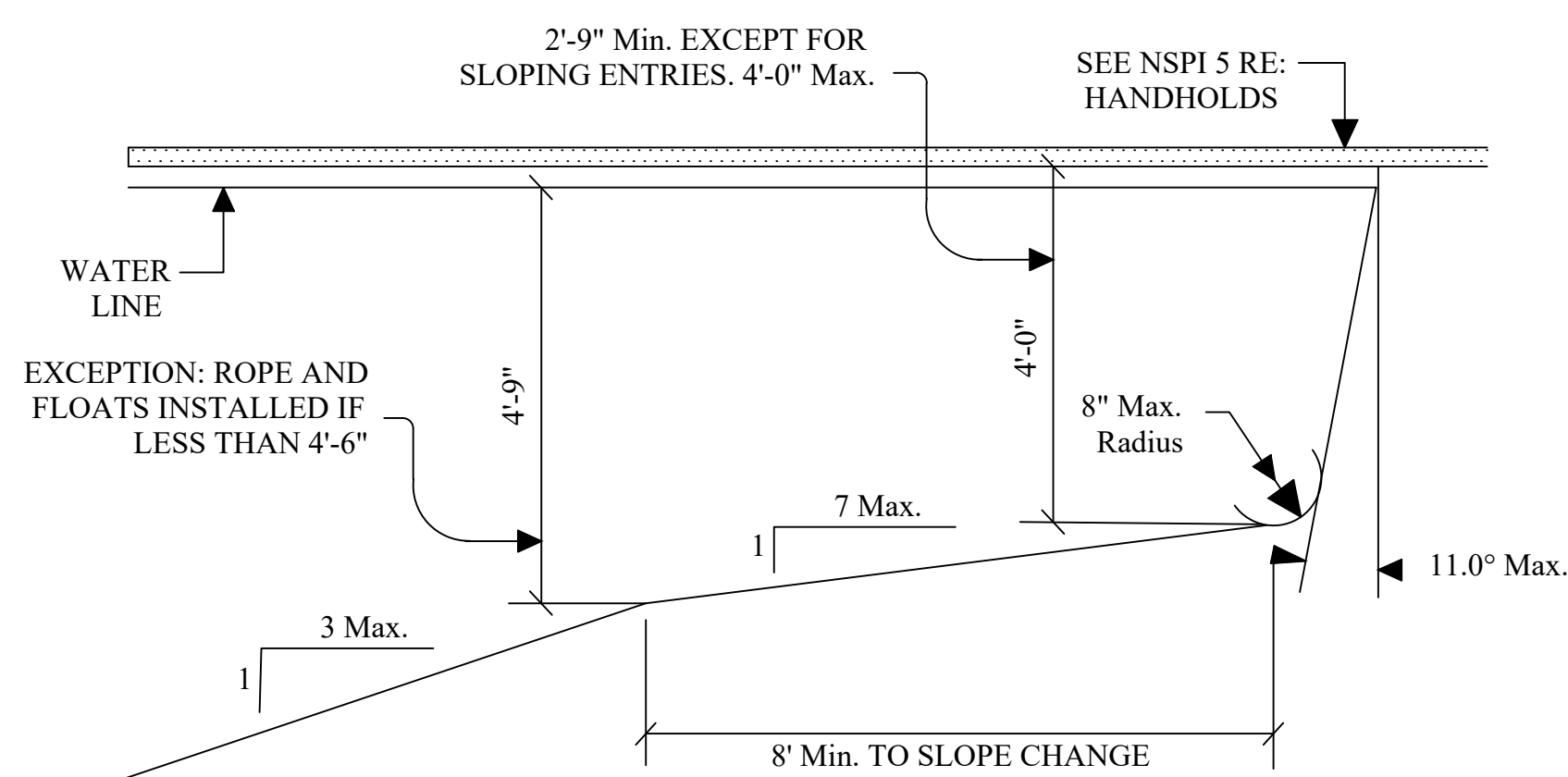
- MAXIMUM WATER DEPTH 4', MAXIMUM SEAT DEPTH 28", MAX.
- FLOOR SLOPE 1:12
- STEPS: MIN. TREAD 10" X 12", 7" MIN. RISER, 12" MAX. RISER EXCEPT THE BOTTOM STEP MAY BE 14" IF IT IS THE SEAT. INTERMEDIATE TREADS AND RISERS TO BE UNIFORM. IF THE SPA IS OPERATED INTERMITTENTLY IT SHALL HAVE A ONE HOUR TURNOVER, IF CONTINUOUS A SIX HOUR TURNOVER.
- MAXIMUM TEMPERATURE 104 DEGREES.
- MEET ANSI/NSPI ARTICLE XVII, SAFETY INSTRUCTION/SAFETY SIGNS.
- PRESSURE TEST PIPING AT 35 PSI FOR 15 MINUTES OR MEET LOCAL CODE IF GREATER.

GENERAL DESIGN REQUIREMENTS

- DESIGN, CONSTRUCTION AND WORKMANSHIP SHALL BE IN CONFORMITY WITH THE REQUIREMENTS OF APSP/ICC 3, APSP/ICC 4, APSP/ICC 5, AND APSP/ICC 6 AND APSP/ICC 7 BASED ON THE POOL TYPE.
- SEE NSPI FOR DIVING WATER ENVELOPES.
- SLIDES SHALL MEET THE MANUFACTURE'S INSTALLATION REQUIREMENTS.
- ALL POOLS WHETHER PUBLIC OR PRIVATE SHALL BE PROVIDED WITH A LADDER OR STEPS IN THE SHALLOW END WHERE THE WATER DEPTH EXCEEDS 24 INCHES (610 MM). IN PRIVATE POOLS WHERE WATER DEPTH EXCEEDS 5 FEET (1524 MM) THERE SHALL BE LADDERS, STAIRS OR UNDERWATER BENCHES/ SWIM-OUTS IN THE DEEP END. WHERE MANUFACTURED DIVING EQUIPMENT IS TO BE USED, BENCHES OR SWIM-OUTS SHALL BE RECESSED OR LOCATED IN A CORNER.
- CIRCULATION SYSTEMS, COMPONENTS AND EQUIPMENT SHALL COMPLY WITH NSF 50.
- THE MAXIMUM TURNOVER RATE IS 12 HOURS.
- FILTERS SHALL HAVE AN AIR RELEASE AND PRESSURE GAGE.
- PUMPS 3 HP AND LESS SHALL MEET ANSI/UL1081 CORROSION RESISTANT WITH STRAINER AND MEET THE REQUIRED FLOW.
- SURFACE SKIMMERS SHALL MEET NSF 50 AND THERE SHALL BE ONE FOR EVERY 800 SQUARE FEET OF SURFACE AREA.
- APPROVED MANUFACTURED INLET FITTINGS FOR THE RETURN OF RECIRCULATED POOL WATER SHALL BE PROVIDED ON THE BASIS OF AT LEAST ONE PER 300 SQUARE FEET (28 m2) OF SURFACE AREA. SUCH INLET FITTINGS SHALL BE DESIGNED AND CONSTRUCTED TO INSURE AN ADEQUATE SEAL TO THE POOL STRUCTURE AND SHALL INCORPORATE A CONVENIENT MEANS OF SEALING FOR PRESSURE TESTING OF THE POOL CIRCULATION PIPING. WHEN MORE THAN ONE INLET IS REQUIRED, THE SHORTEST DISTANCE BETWEEN ANY TWO REQUIRED INLETS SHALL BE AT LEAST 10 FEET (3048 MM).
- HEATER SHALL MEET ANSI-Z21.56 OR UL 1261 OR UL 559.
- DISINFECTANT EQUIPMENT SHALL COMPLY WITH NSF 50.
- PRESSURE TEST PIPING AT 35 PSI FOR 15 MINUTES OR MEET LOCAL CODE IF GREATER.
- RESIDENTIAL SWIMMING BARRIER REQUIREMENTS TO MEET SECTONS 4501.17
- WASTE DISPOSAL TO COMPLY WITH SECTION 454.2.10

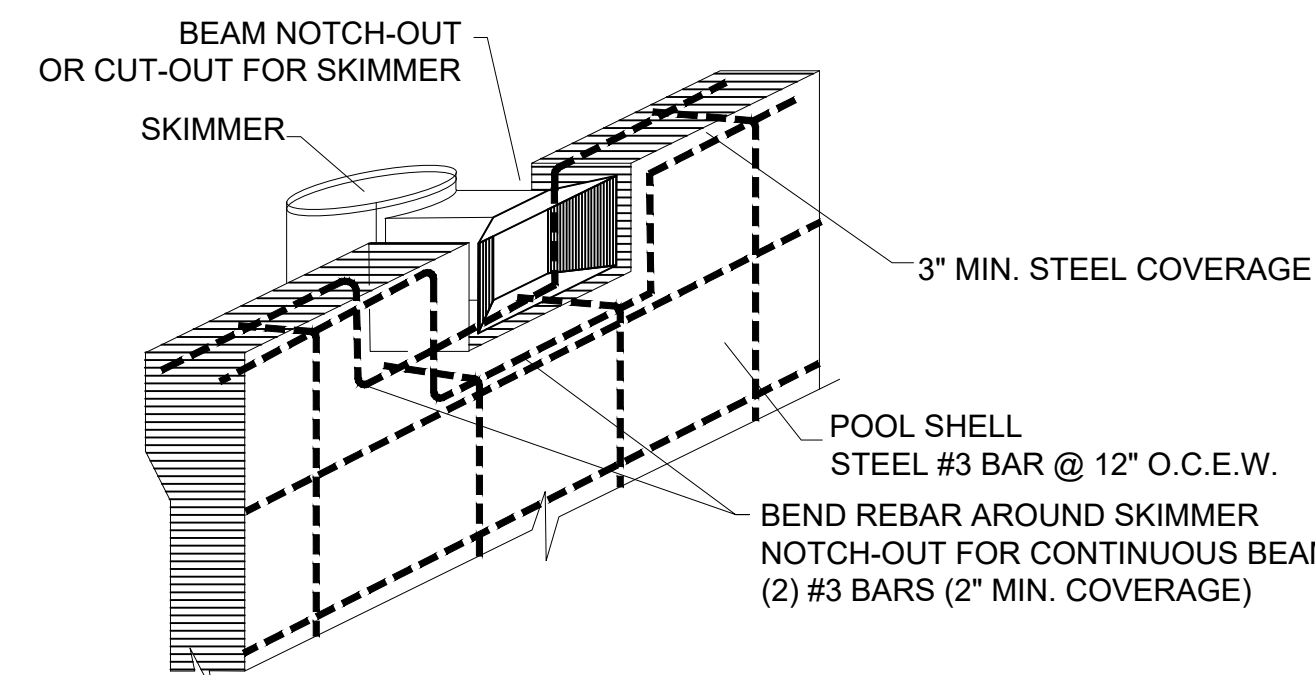
ELECTRICAL REQUIREMENTS:

- WIRING AND BONDING AND ALL ELECTRICAL TO COMPLY WITH CHAPTER 27, FLORIDA BUILDING CODE 7TH EDITION-RESIDENTIAL AND NEC 2017.
- NO OUTLET OR OVERHEAD POWER WITHIN 10' IF WITHIN 15' PROTECT BY GFI, TRANSFORMER MIN. 10' FROM POOL, 8" ABOVE WATER, J BOX 4' FROM POOL, BRASS TO J BOX OR TRANSFORMER WHICH EVER IS FIRST EXCEPT WHERE PVC IS APPROVED.



POOL SECTION DETAIL

N.T.S.



STEEL AT SKIMMER BEAM DETAIL

N.T.S.

SAMPLE ONLY. EACH APPLICATION FOR PERMIT SHALL BE BASED ON A TOTAL DYNAMIC HEAD OF 60 ft.

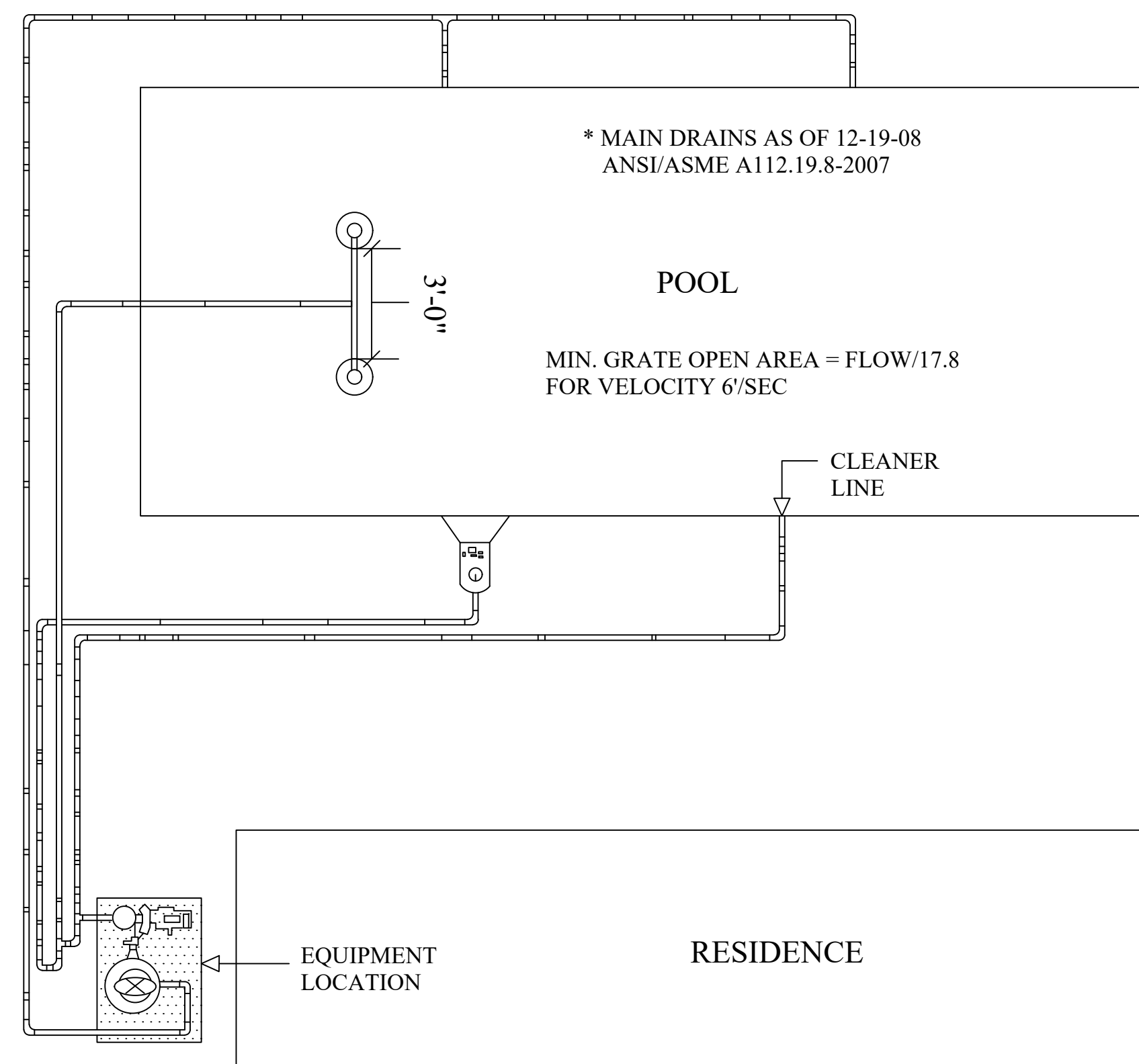
Determine System Flow Rate:
Minimum Flow Rate Required: 35gpm per skimmer (Required: 1 Skimmer per 800 sf)

Pool Volume: $500 \text{ sq. ft} \times 4 \text{ ave depth} \times 7.481 \text{ gal/cf} = 15,000 \text{ gallons}$
Turnover Time in Hours: $\frac{15,000 \text{ gallons}}{360 \text{ gpm} \times 60 \text{ min/hr}} = 360 \text{ minutes}$
Flow Rate: $\frac{15,000 \text{ gallons}}{360 \text{ minutes}} = 42 \text{ gpm}$

PIPE SIZING CHART (MAXIMUM)

PIPE	SUCTION	PRESSURE
1 1/2"	35 GPM	65 GPM
2"	60	105
2 1/2"	90	147
3"	135	230
4"	235	396

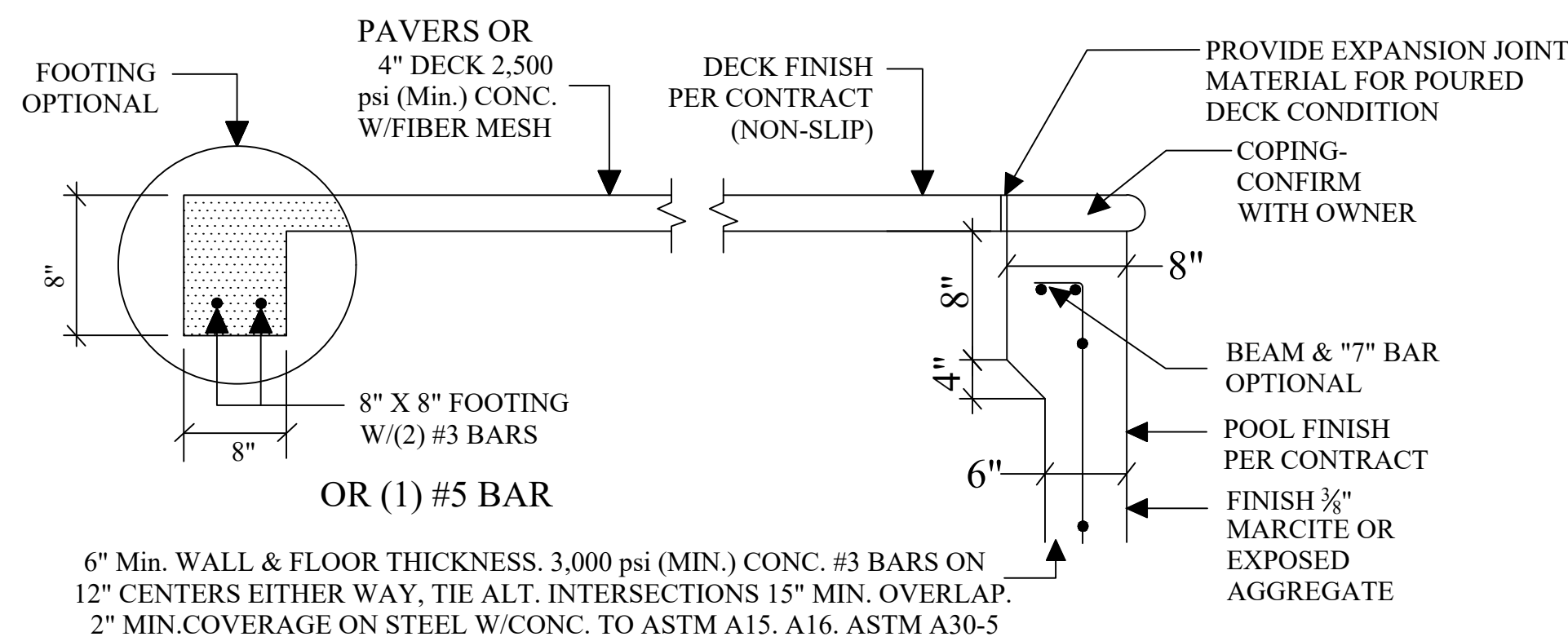
MAIN SUCTION PIPE SIZE 2"
SKIMMER SUCTION PIPE SIZE 2"
CLEANER/VAC PIPE SIZE 1 1/2"
RETURN SUCTION PIPE SIZE 1 1/2"



R403.10 (MANDATORY)
POOLS & PERMANENT SPA ENERGY CONSUMPTION
- THE ENERGY CONSUMPTION OF POOLS AND PERMANENT SPAS SHALL BE IN ACCORDANCE WITH SECTIONS R403.10.1 THROUGH R403.10.5.

IT HAS BEEN CERTIFIED THAT THESE DESIGN REQUIREMENTS ARE IN COMPLIANCE WITH THE FLORIDA BUILDING CODE 7TH EDITION, R4501, ANSI/APSP/ICC 3, ANSI/APSP/ICC 4, ANSI/APSP/ICC 5, AND ANSI/APSP/ICC 6 AND ANSI/APSP/ICC 7, ANSI/APSP/ICC 14, ANSI/APSP/ICC 15.

SB836, 6-20-07
FOR BONDING AND GROUNDING SYSTEMS FOR SWIMMING POOLS, THE USE OF AN UNDERGROUND BONDING CONDUCTOR MADE OF #8 AWG. BARE SOLID COPPER WIRE BURIED TO A MINIMUM DEPTH OF 4 INCHES TO 6 INCHES BELOW SUBGRADE, AND 18 TO 24 INCHES FROM INSIDE WALL OF A SWIMMING POOL OR SPA, IS DEEMED A PERMISSIBLE ALTERNATIVE OR EQUIVALENT TO COMPLIANCE WITH s. 680.26(c) OF THE NATIONAL ELECTRICAL CODE.



POOL/SPA, DECK, BEAM, WALL, FLOOR

N.T.S.

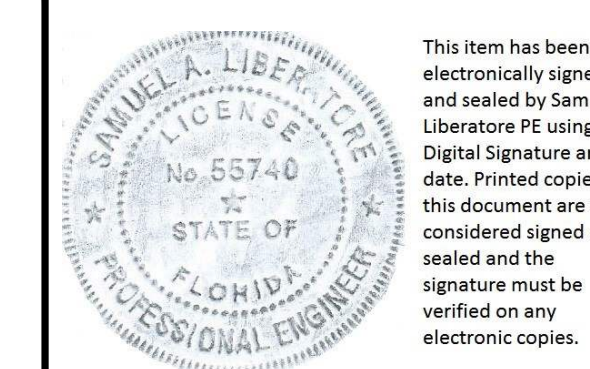


G.B. COLLINS ENGINEERING P.A.
CERTIFICATE OF AUTHORIZATION 27934
COPYRIGHT PROTECTED-VA 2-284-184, VA 2-278-832

AQUATIC ENGINEERING CONSULTANTS
32707 US HWY 19 N
PALM HARBOR, FLORIDA 34684
gb_collins@verizon.net
(727)-442-8443

GREGORY II & DANIELLE POOLE
198 SW GOVERNORS GLN
LAKE CITY, FLORIDA 32024

Standard Residential Pool and/or Spa Design



Samuel A Liberatore
2023.10.11
15:52:17 -0400

COMPLIES WITH FLORIDA BUILDING CODE, 7TH EDITION (2020)