

6

5

4

3

2

1

F

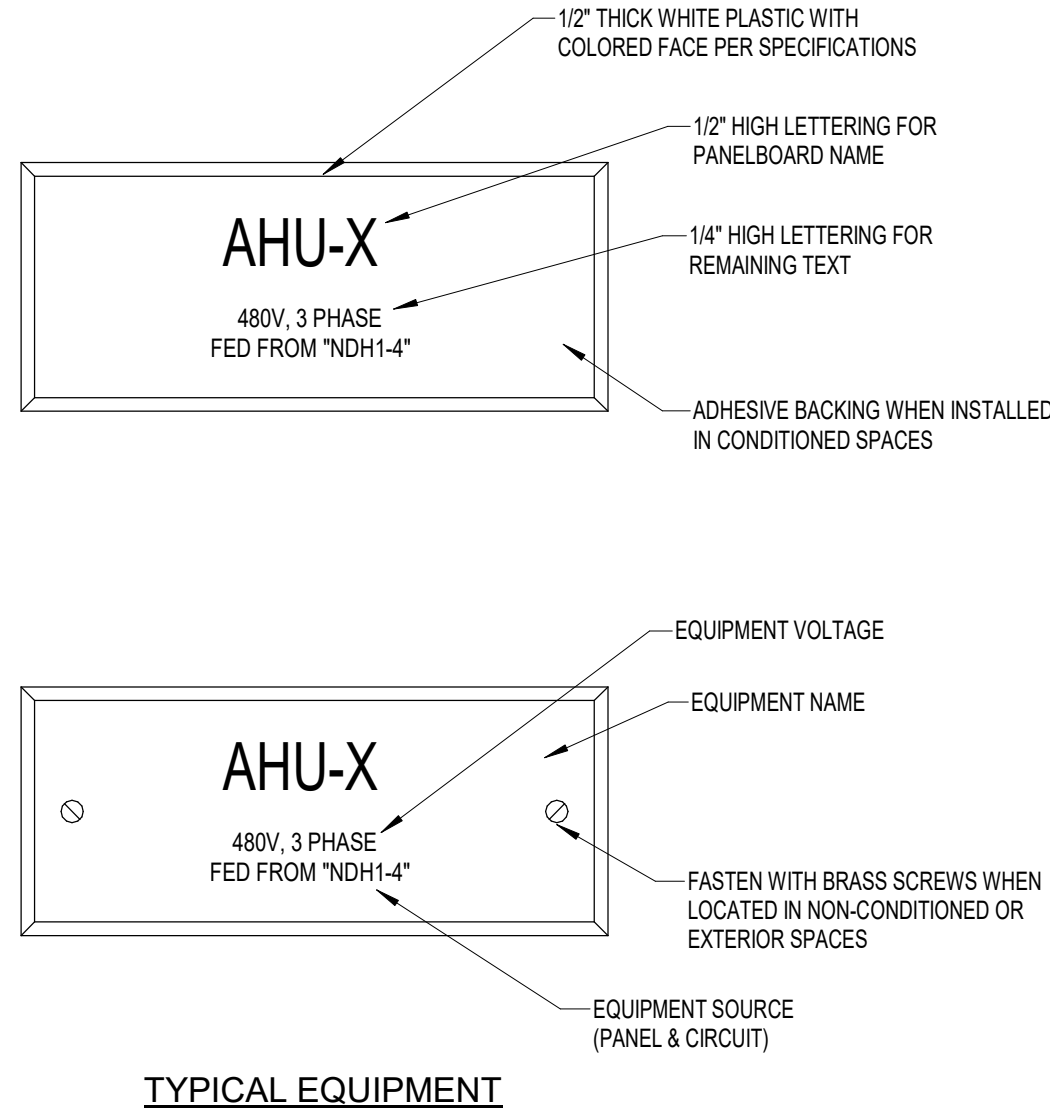
E

D

C

B

A



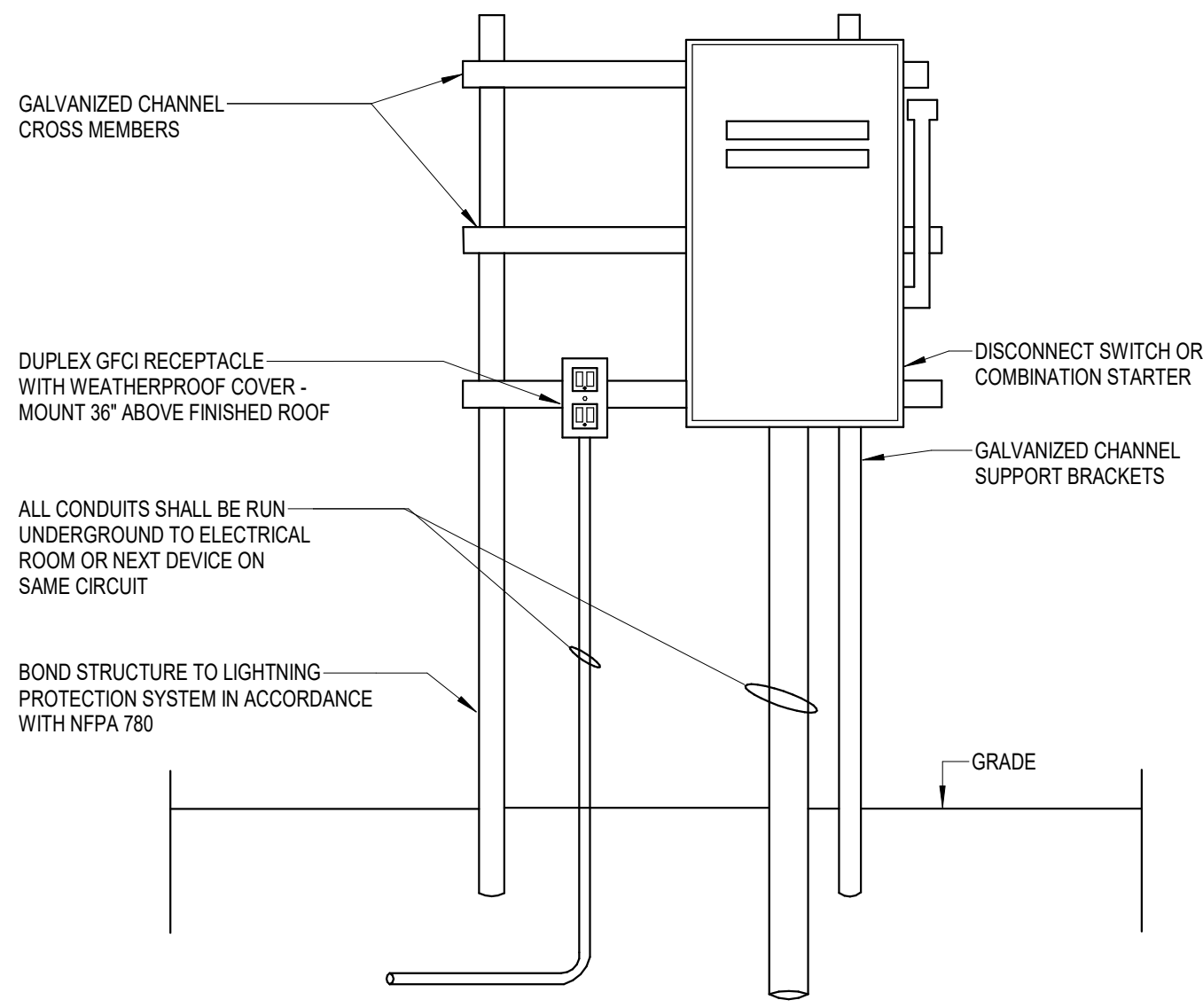
TYPICAL EQUIPMENT

THE WIRE SIZE FOR 120-VOLT, 208-VOLT OR 240-VOLT, SINGLE PHASE, 20 AMP OR 30 AMP BRANCH CIRCUITS SHALL BE SELECTED FROM THE FOLLOWING TABLES. (SEE RISER DIAGRAM FOR VOLTAGE OF EACH SPECIFIC PROJECT)

120 VOLT CIRCUIT WIRING FOR <3% VOLTAGE DROP PER FBC ENERGY CONSERVATION						
DISTANCES (FT)						
AMPS	#12	#10	#8	#6	#4	
30 AMP CIRCUIT:						
24		69	105	164	254	
23		72	109	167	265	
22		74	114	179	277	
21		79	120	188	290	
20		83	126	197	305	
19		87	132	207	321	
18		92	140	219	338	
17		97	148	232	358	
20 OR 30 AMP CIRCUIT:						
16	62	103	157	246	381	
15	66	108	168	263	405	
14	71	118	180	282	435	
13	77	127	194	303	469	
12	83	138	210	329	508	
11	91	150	229	359	554	
10	100	165	252	396	610	
9	111	180	280	438	677	
8	125	205	315	493	762	
7	143	230	360	564	871	
6	167	275	420	658	1016	
5	200	330	505	790	1220	
4	250	415	631	987	1525	
3	334	550	841	1316	2033	
2	501	830	1262	1915	3050	
1	1003	1660	2525	3860	6101	

208 VOLT CIRCUIT WIRING FOR <3% VOLTAGE DROP PER FBC ENERGY CONSERVATION						
DISTANCES (FT)						
AMPS	#12	#10	#8	#6	#4	
30 AMP CIRCUIT:						
24		126	191	298	457	
23		130	199	311	477	
22		137	208	325	499	
21		144	218	340	523	
20		151	229	357	549	
19		159	241	376	578	
18		168	255	397	610	
17		178	270	420	646	
20 OR 30 AMP CIRCUIT:						
16	114	189	286	445	686	
15	121	201	303	476	731	
14	130	215	326	509	783	
13	140	232	352	550	844	
12	152	251	381	596	915	
11	166	274	416	650	998	
10	182	301	456	714	1096	
9	203	336	507	793	1219	
8	229	378	572	892	1372	
7	262	431	655	1020	1568	
6	305	504	762	1190	1829	
5	365	604	915	1429	2195	
4	457	757	1143	1766	2744	
3	610	1009	1534	2382	3658	
2	916	1514	2292	3573	5487	
1	1833	3028	4581	7148	10974	

277 VOLT CIRCUIT WIRING FOR <3% VOLTAGE DROP PER FBC ENERGY CONSERVATION						
DISTANCES (FT)						
AMPS	#12	#10	#8	#6	#4	
30 AMP CIRCUIT:						
24		159	242	379	584	
23		166	251	384	610	
22		170	262	412	637	
21		182	276	432	667	
20		191	290	453	702	
19		200	304	476	738	
18		212	322	504	777	
17		223	340	534	828	
20 OR 30 AMP CIRCUIT:						
16	143	237	361	566	876	
15	152	248	386	605	932	
14	163	271	414	649	1001	
13	177	292	446	697	1079	
12	191	317	483	757	1168	
11	209	345	527	826	1274	
10	230	380	580	911	1403	
9	255	414	644	1007	1557	
8	288	472	725	1134	1753	
7	329	530	828	1297	2003	
6	384	633	966	1513	2337	
5	460	759	1162	1817	2806	
4	575	955	1451	2270	3508	
3	768	1265	1934	3027	4676	
2	1152	1969	2903	4543	7015	
1	2307	3818	5808	9065	14032	



EQUIPMENT NAMEPLATE

No Scale

3

BRANCH CIRCUIT VOLTAGE DROP

No Scale

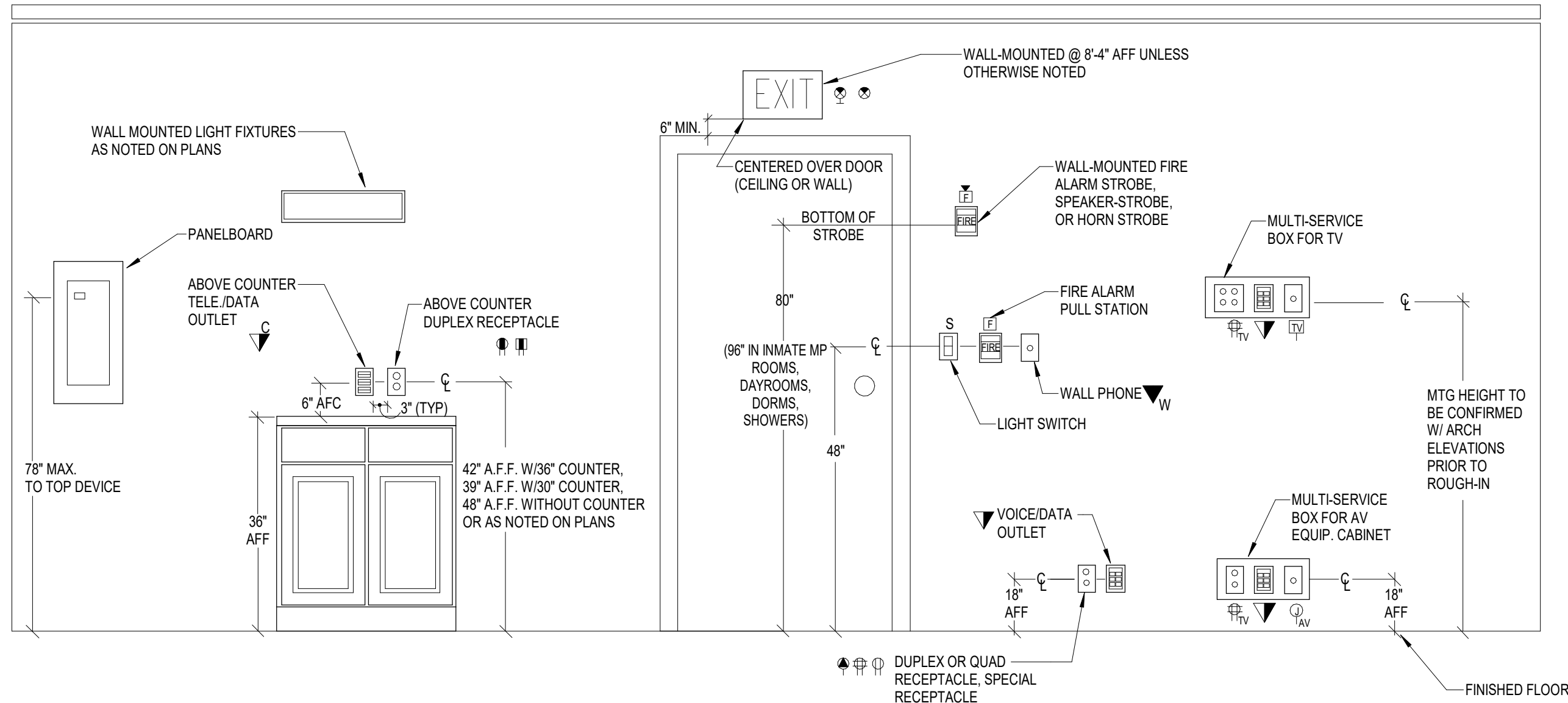
2

CHANNEL MOUNTED DISCONNCT SWITCH/STARTERS

No Scale

1

MOUNTING HEIGHTS INDICATED ON ARCHITECTURAL ELEVATIONS AND ELECTRICAL PLANS TAKE PRECEDENCE OVER MOUNTING HEIGHTS INDICATED IN THIS DETAIL. IF THERE IS A DISCREPANCY IN THE MOUNTING HEIGHTS BETWEEN ARCHITECTURAL ELEVATIONS AND THE ELECTRICAL PLANS, THE DIMENSIONS ON THE ARCHITECTURAL ELEVATIONS SHALL DICTATE MOUNTING HEIGHT. IF NO MOUNTING HEIGHTS ARE INDICATED, INSTALL DEVICES PER THIS DETAIL.



MOUNTING HEIGHTS

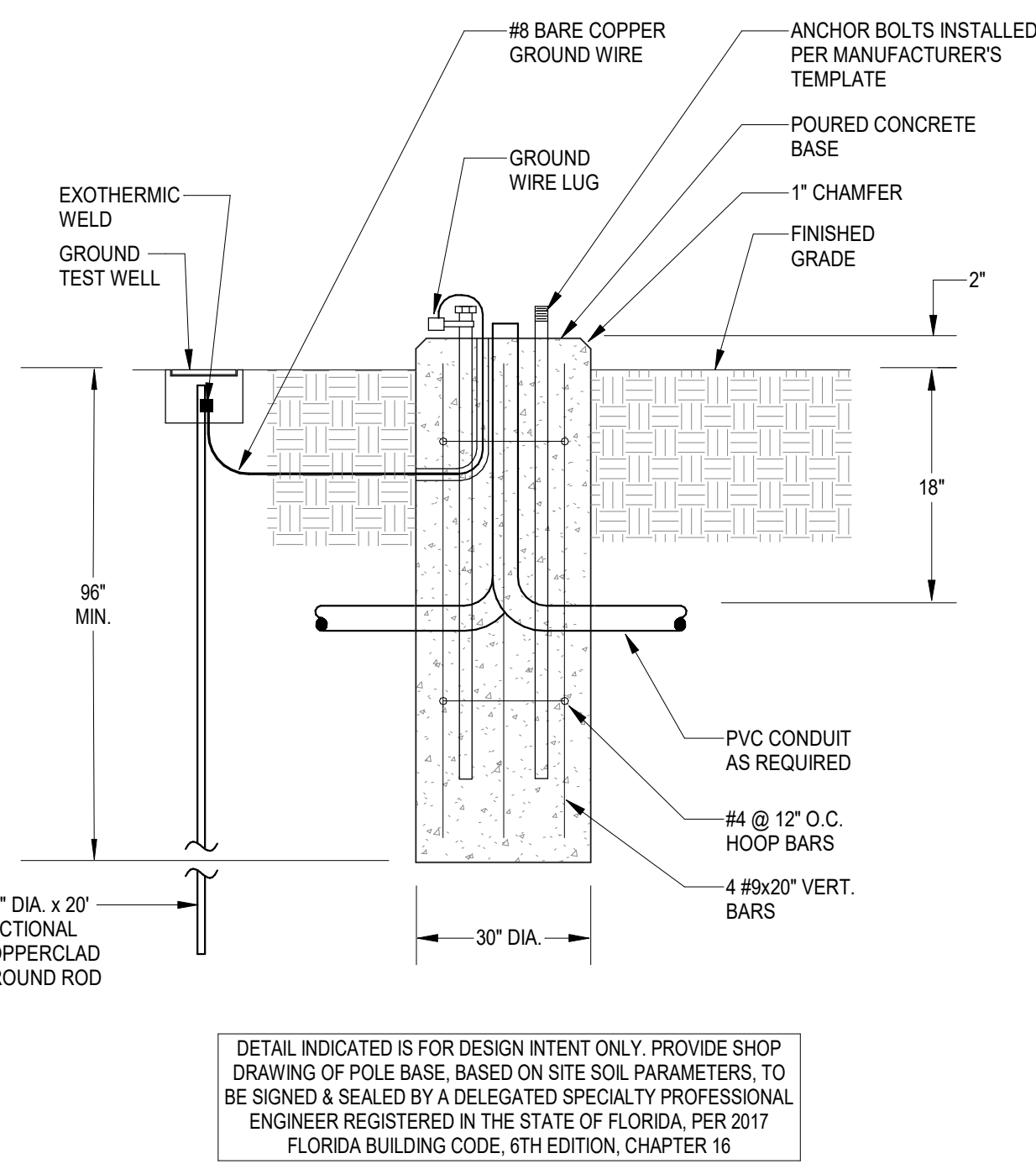
No Scale

6

POLE BASE FOR POLES 25' TO 30'

SCALE: NTS

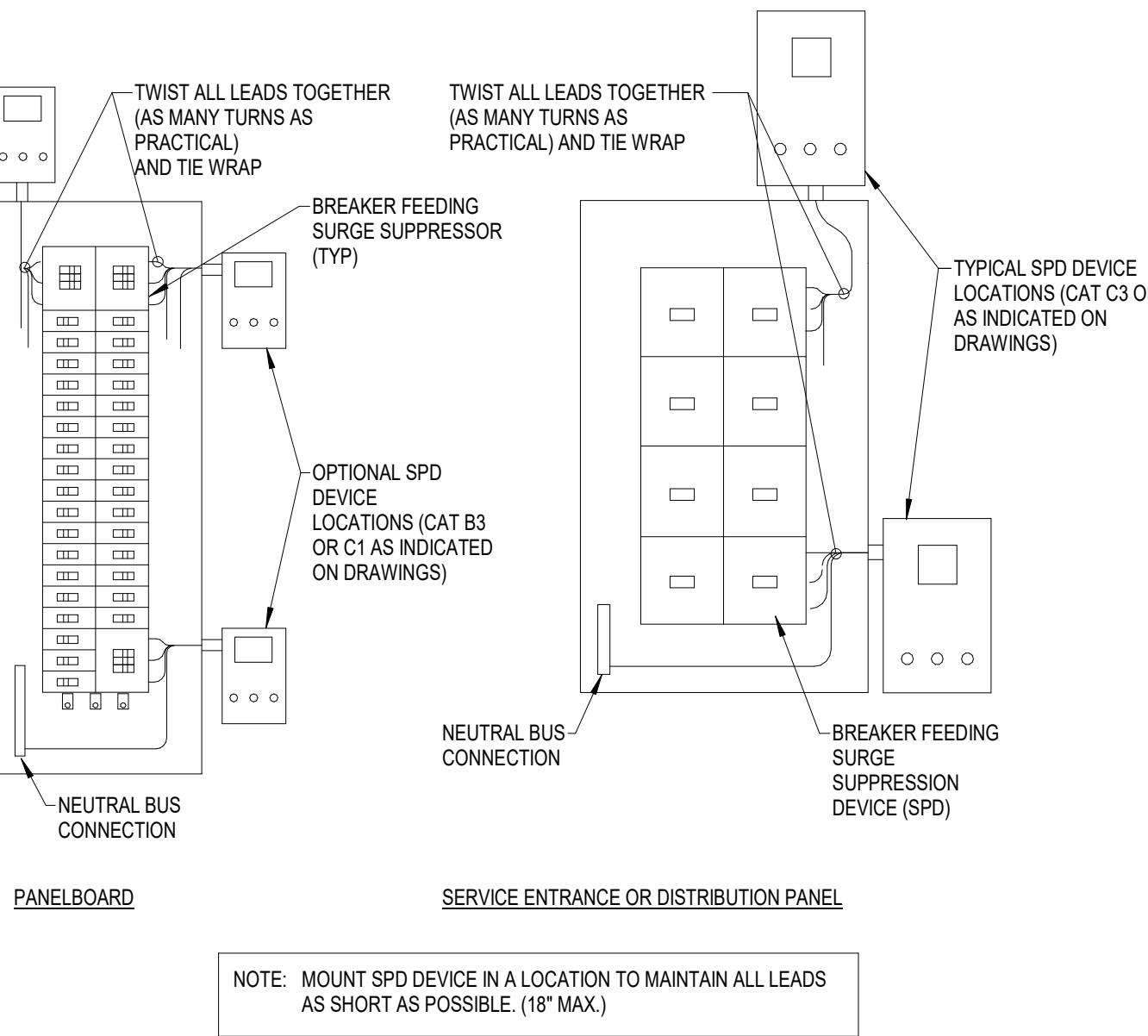
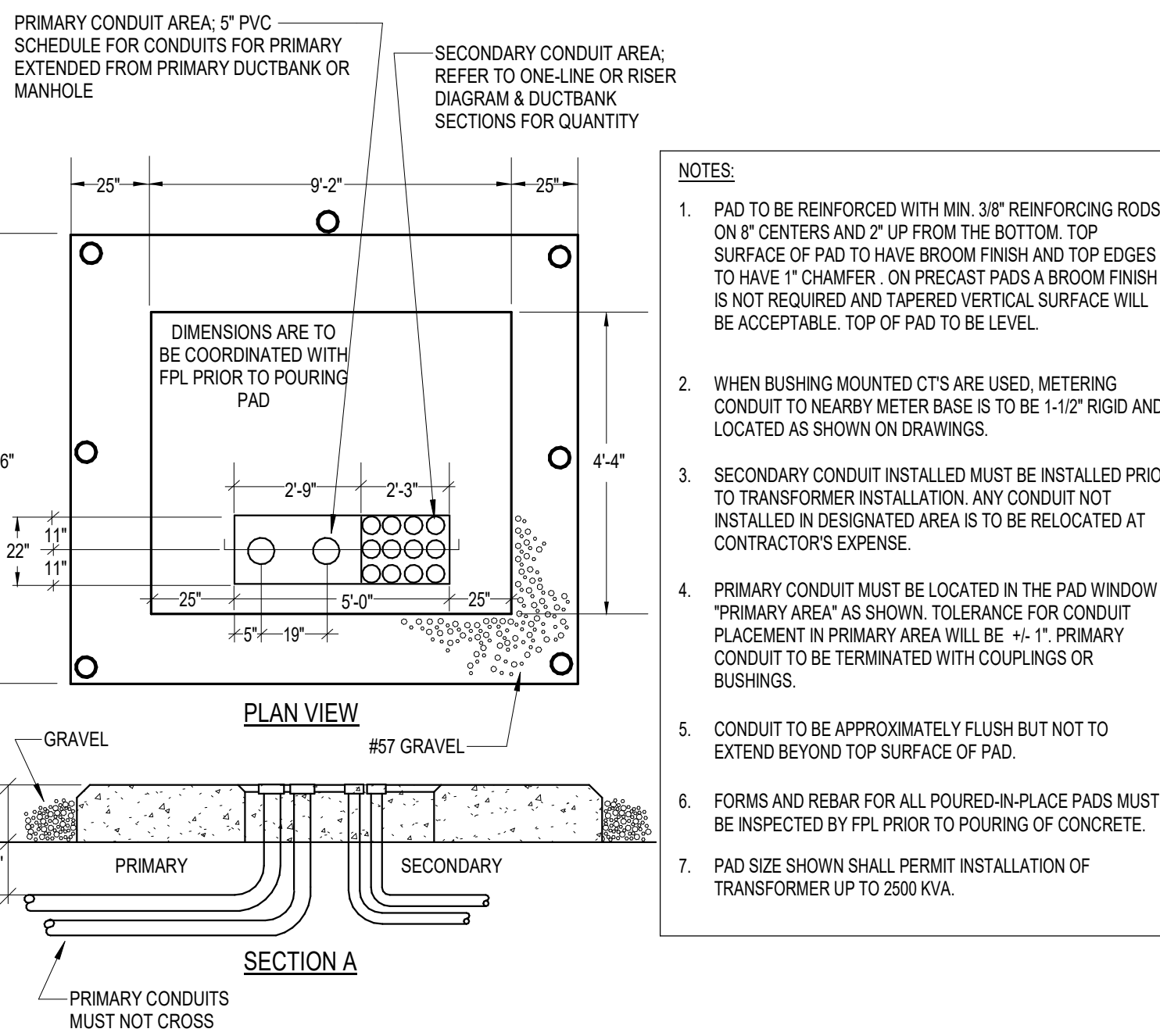
5



GROUND BAR

No Scale

4



SPD EXTERIOR MOUNT INSTALLATION

No Scale

9

PANELBOARD NAMEPLATE

No Scale

8

UTILITY COMPANY TRANSFORMER PAD

No Scale

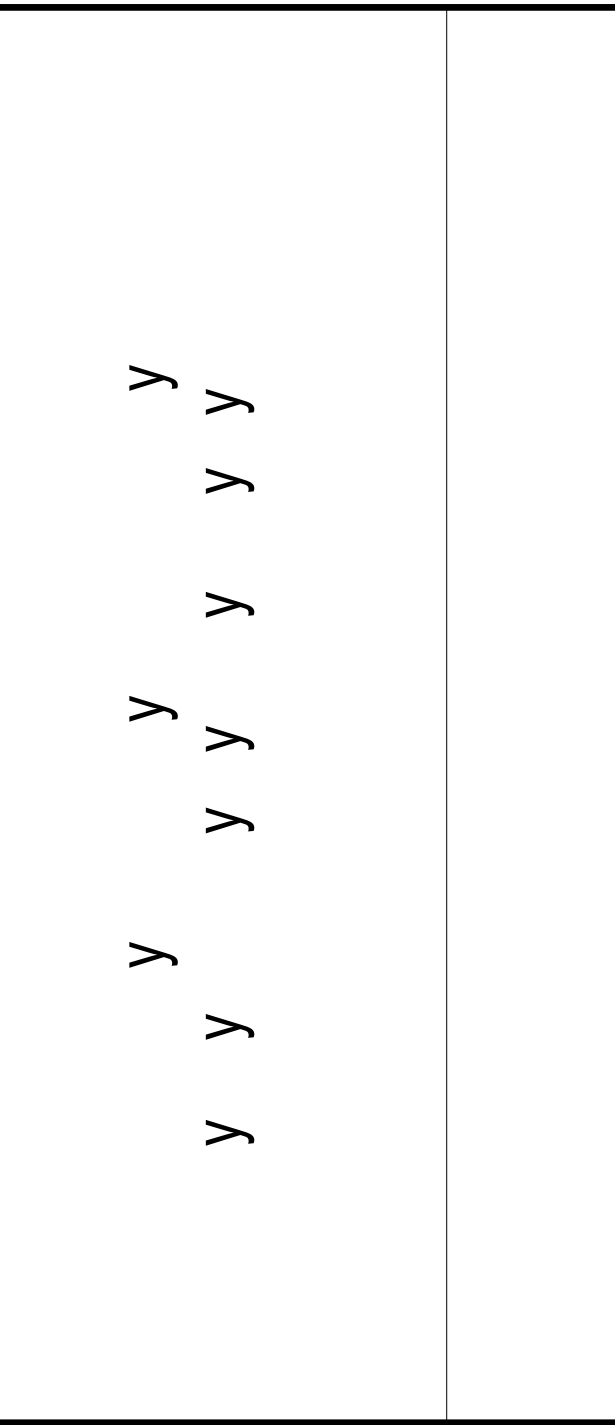
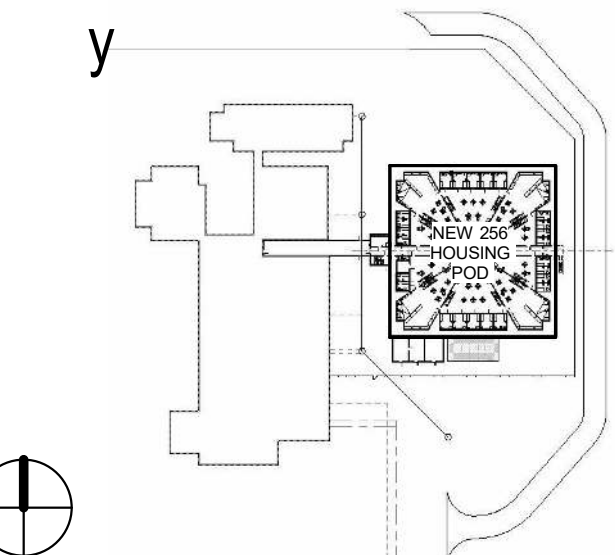
7

Professional Seals

Wayne Edward Allred, P.E.
State of Florida
Professional Engineer
License No. 45800

This item has been electronically signed and sealed by the individual named above, using a dated Digital Signature in the space below, per F.A.C. Rule 61G15-23.004. Printed copies of this document are not considered signed and sealed, and the signature must be verified on any electronic copies.

Wayne E Allred
Date: 03/27/2023 10:07 AM



SCALE 12" = 1'-0"

No.	Description	Date

REVISIONS

DRAWN BY	O DORIA
APPROVED BY	W ALLRED
CHECKED BY	L WOLFE
DATE	JULY 24, 2020

TITLE

ELECTRICAL DETAILS

PROJECT NO. 50101397

E-601

SHEET NO.

DESTROY AFTER USE