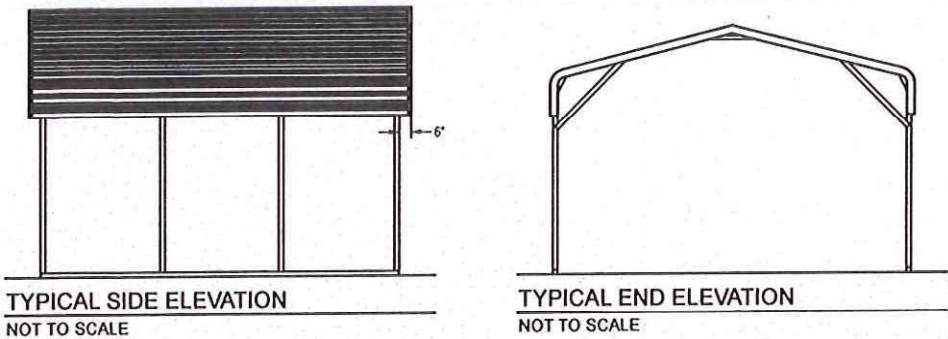
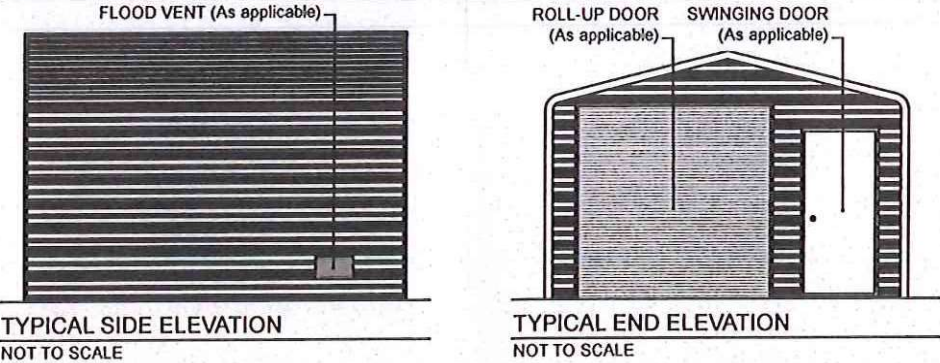


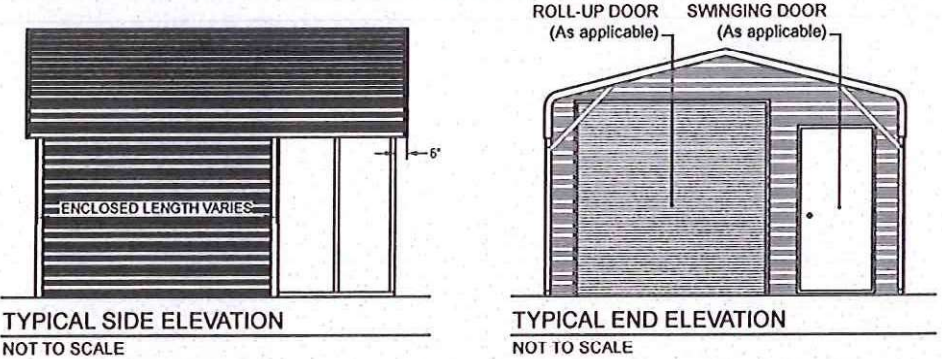
BOW FRAME RAFTER OPEN CARPORT - HORIZONTAL ROOF



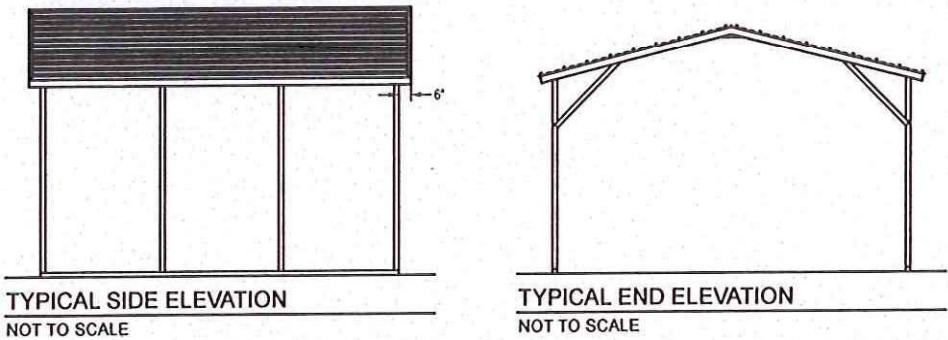
BOW FRAME RAFTER ENCLOSED BUILDING - HORIZONTAL ROOF



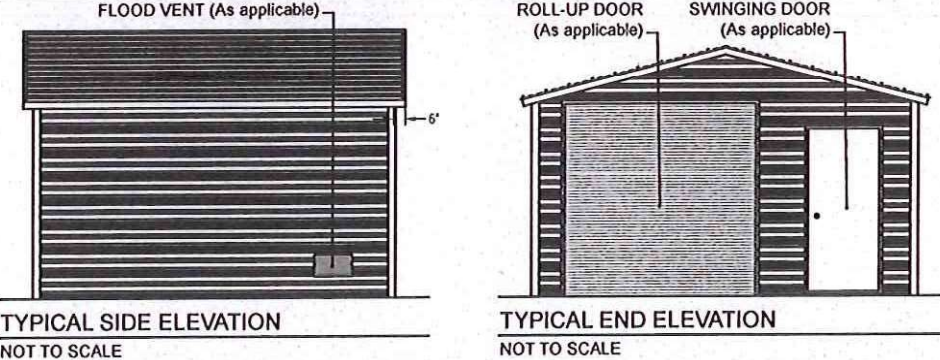
BOW FRAME RAFTER UTILITY BUILDING - HORIZONTAL ROOF



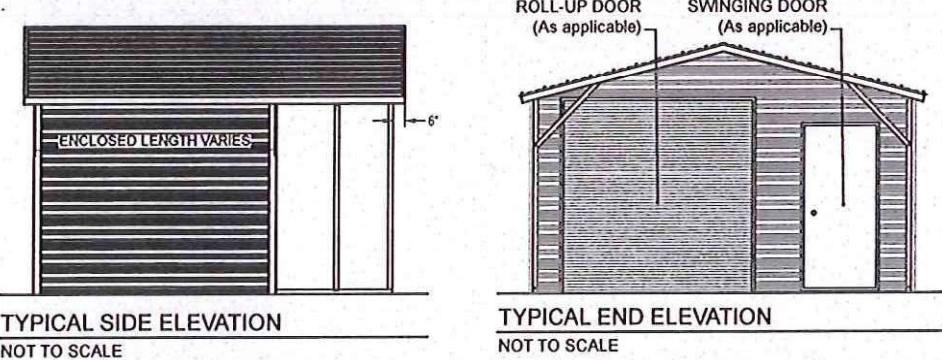
BOX EAVE FRAME RAFTER OPEN CARPORT - HORIZONTAL ROOF



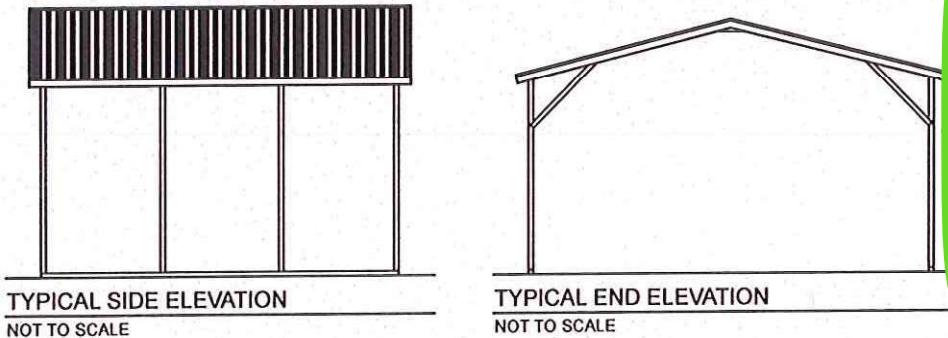
BOX EAVE FRAME RAFTER ENCLOSED BLDG - HORIZONTAL ROOF



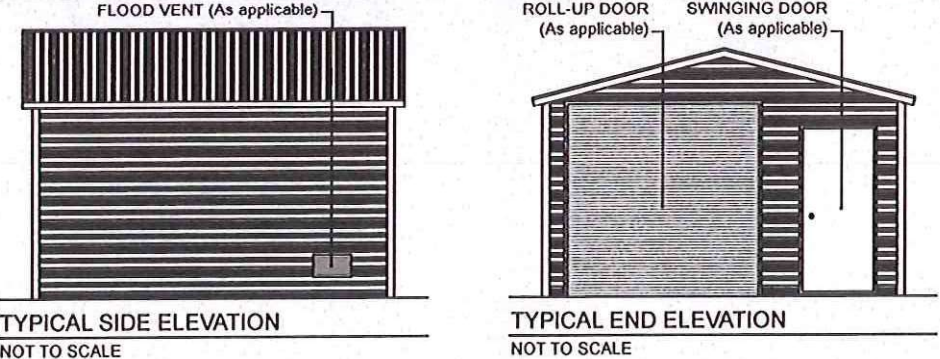
BOX EAVE FRAME RAFTER UTILITY BLDG - HORIZONTAL ROOF



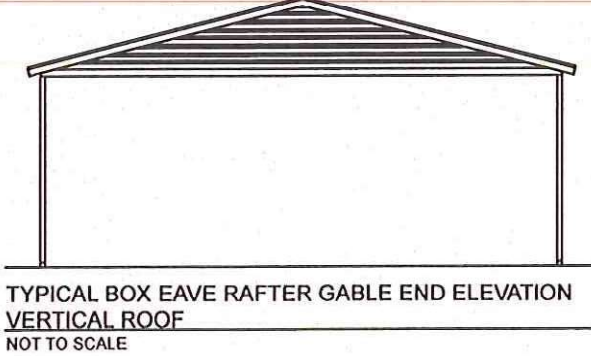
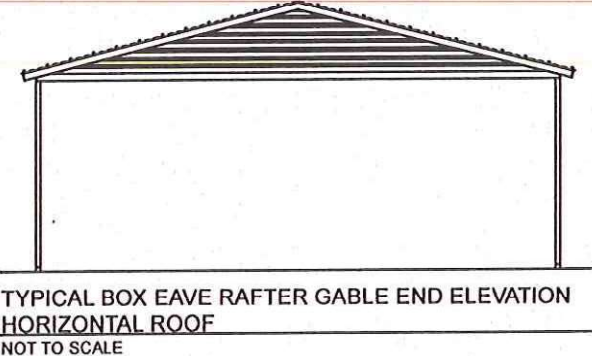
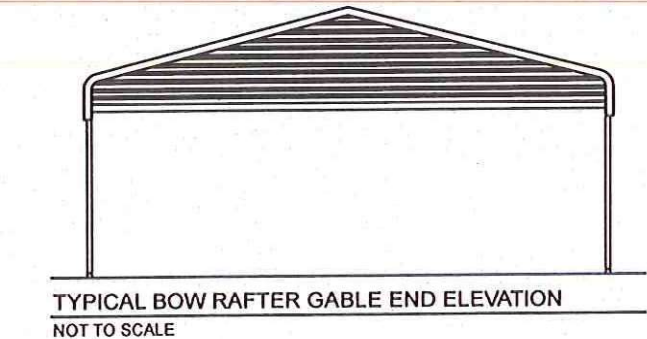
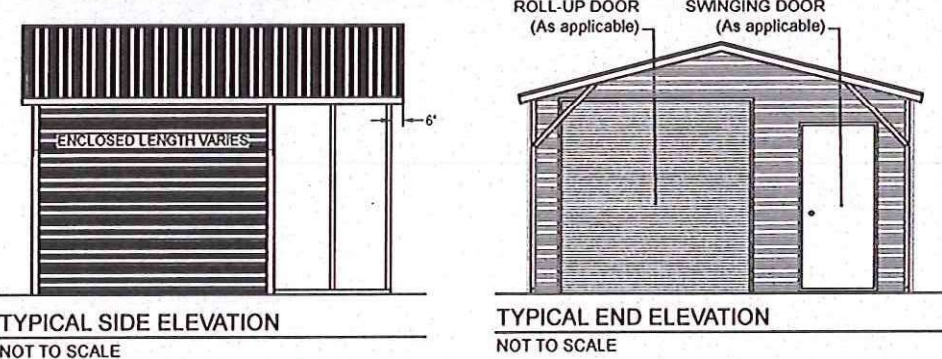
BOX EAVE FRAME RAFTER OPEN CARPORT - VERTICAL ROOF



BOX EAVE FRAME RAFTER ENCLOSED BLDG - VERTICAL ROOF



BOX EAVE FRAME RAFTER UTILITY BLDG - VERTICAL ROOF

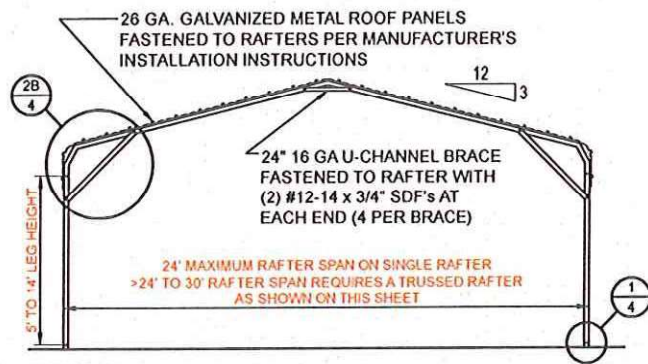


BECHTOL ENGINEERING AND TESTING, INC.
605 WEST NEW YORK AVENUE
DELAND, FLORIDA 32720

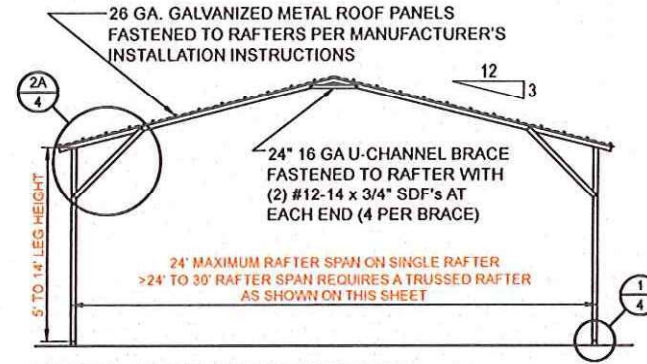
LOVE B PATEL
LICENSE
No. 90753
STATE OF FLORIDA
PROFESSIONAL ENGINEER

CAROLINA CARPORTS, INC.
GENERIC PLANS FOR USE IN THE STATE OF FLORIDA

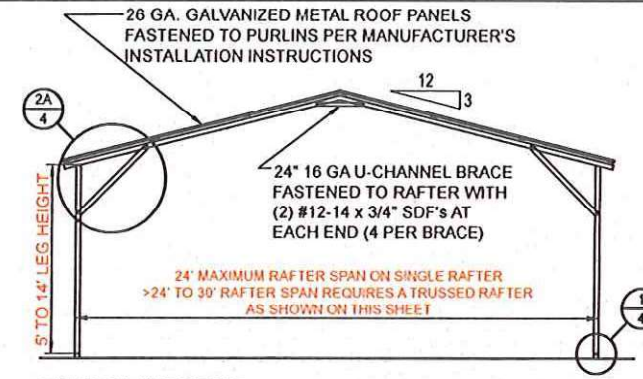
| | | | | | | | | | | |
|-----------|--|---|------|----------|-------|-----|-----------|--------|-------|--------|
| | BECHTOL ENGINEERING AND TESTING, Inc. <small>CONSULTING GEOTECHNICAL, ENVIRONMENTAL, AND MATERIALS TESTING ENGINEERS Certificate of Authorization No. 00005492</small> | <table><tr><td>DATE</td><td>1/1/2024</td></tr><tr><td>SCALE</td><td>NTS</td></tr><tr><td>PROJ. NO.</td><td>G24001</td></tr><tr><td>SHEET</td><td>2 OF 6</td></tr></table> | DATE | 1/1/2024 | SCALE | NTS | PROJ. NO. | G24001 | SHEET | 2 OF 6 |
| DATE | 1/1/2024 | | | | | | | | | |
| SCALE | NTS | | | | | | | | | |
| PROJ. NO. | G24001 | | | | | | | | | |
| SHEET | 2 OF 6 | | | | | | | | | |



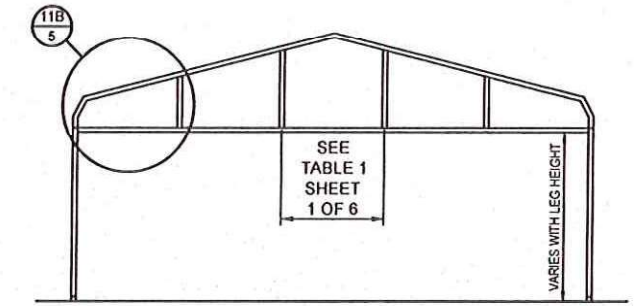
TYPICAL INTERIOR RAFTER/POST FRAME SECTION - BOW FRAME
NOT TO SCALE



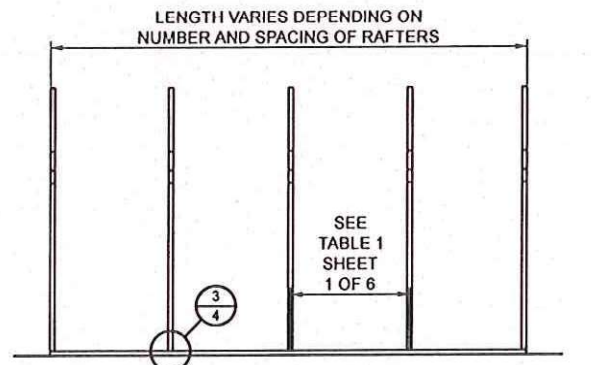
TYPICAL INTERIOR RAFTER/POST FRAME SECTION - HORIZONTAL ROOF - BOX EAVE
NOT TO SCALE



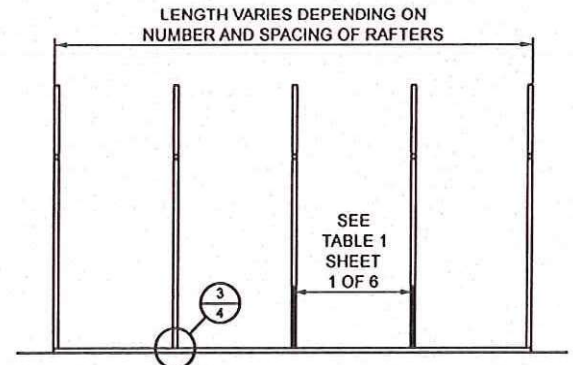
TYPICAL INTERIOR RAFTER/POST FRAME SECTION - VERTICAL ROOF
NOT TO SCALE



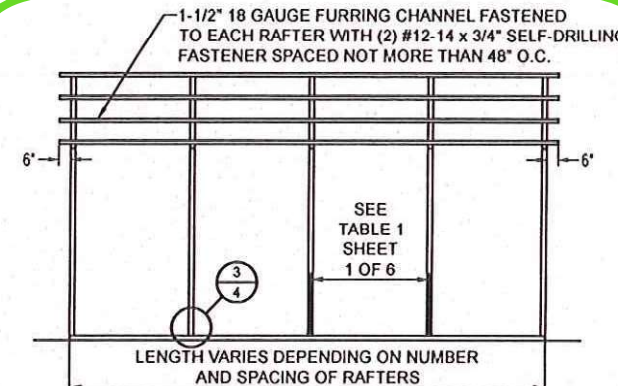
TYPICAL BOW RAFTER GABLE END FRAMING PLAN
NOT TO SCALE



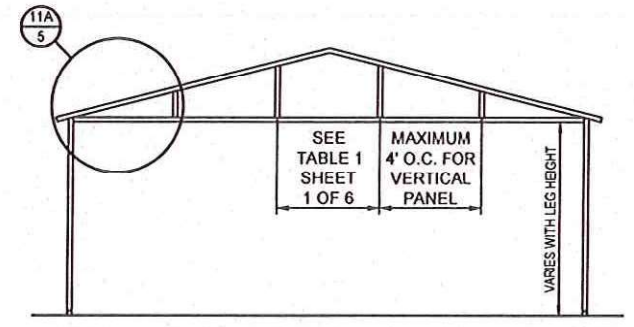
TYPICAL RAFTER/POST FRAMING PLAN - BOW FRAME
NOT TO SCALE



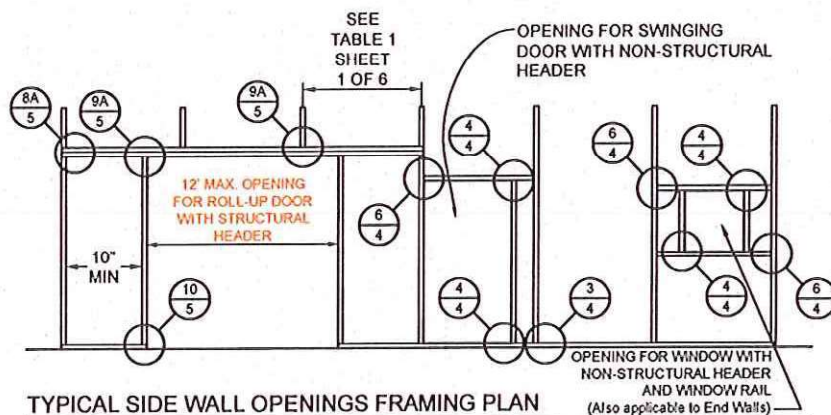
TYPICAL RAFTER/POST FRAMING PLAN - BOX EAVE
NOT TO SCALE



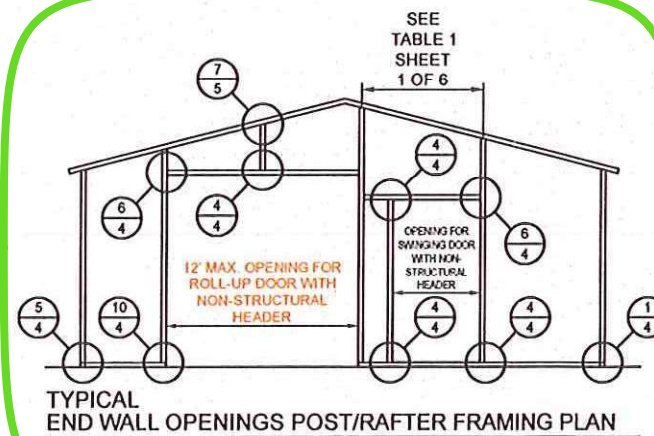
TYPICAL POST/RAFTER FRAMING PLAN - VERTICAL ROOF
NOT TO SCALE



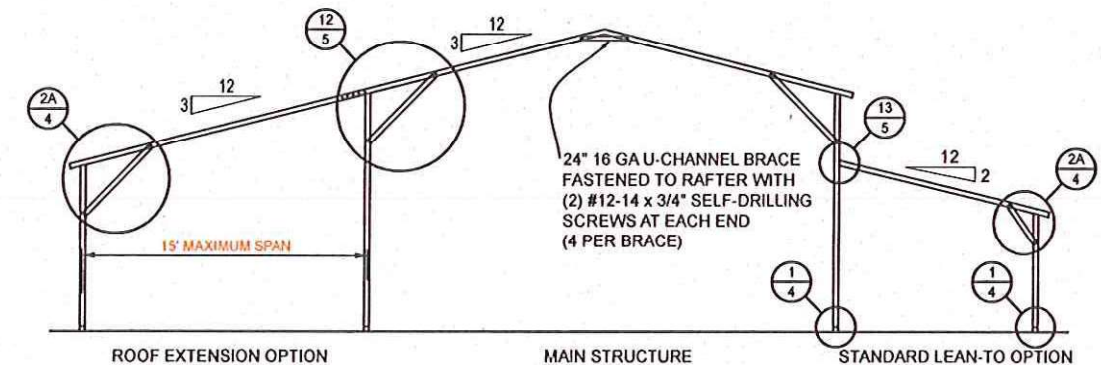
TYPICAL BOX EAVE RAFTER GABLE END FRAMING PLAN
NOT TO SCALE



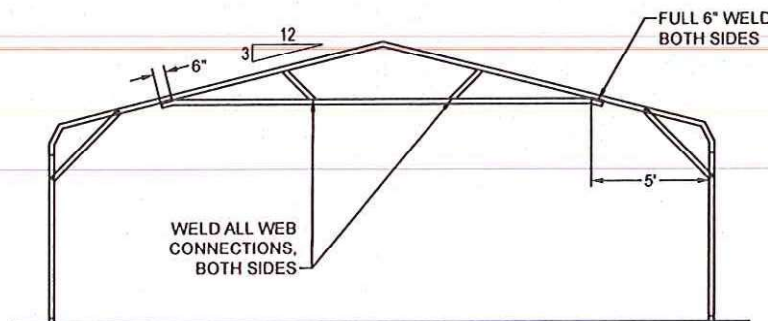
TYPICAL SIDE WALL OPENINGS FRAMING PLAN
NOT TO SCALE



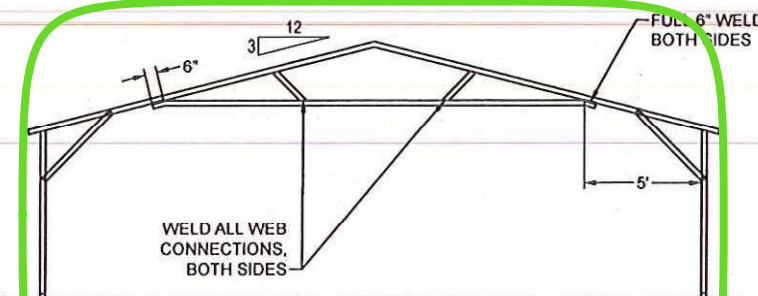
TYPICAL END WALL OPENINGS POST/RAFTER FRAMING PLAN
NOT TO SCALE



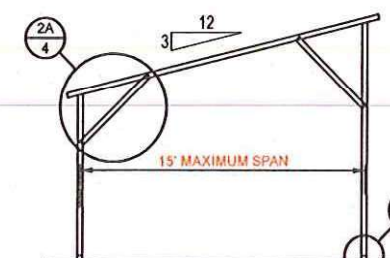
TYPICAL LEAN-TO OPTIONS FRAMING PLAN (BOTH OPTIONS SHOWN)
NOT TO SCALE (BOX EAVE RAFTER SHOWN, ONLY STANDARD LEAN-TO IS APPLICABLE TO BOW FRAME RAFTER)



OPTIONAL 24'-1\"/>

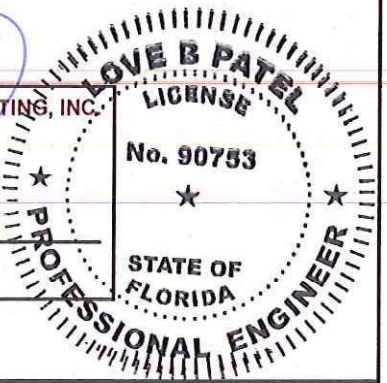


OPTIONAL 24'-1\"/>



FREESTANDING LEAN-TO FRAMING PLAN
NOT TO SCALE

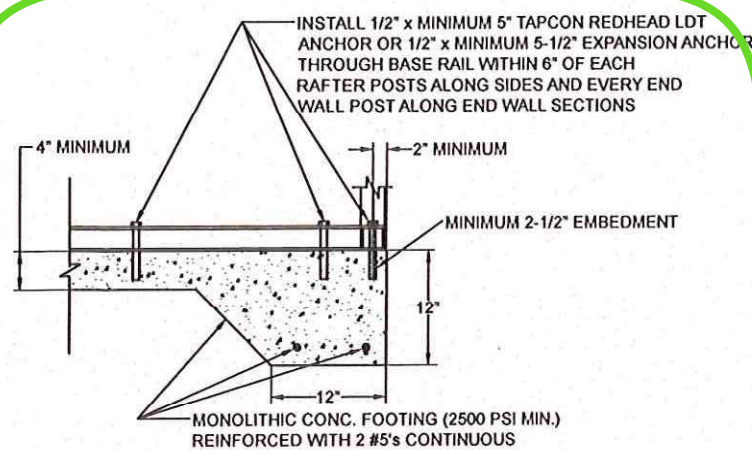
BECHTOL ENGINEERING AND TESTING, INC.
605 WEST NEW YORK AVENUE
DELAND, FLORIDA 32720



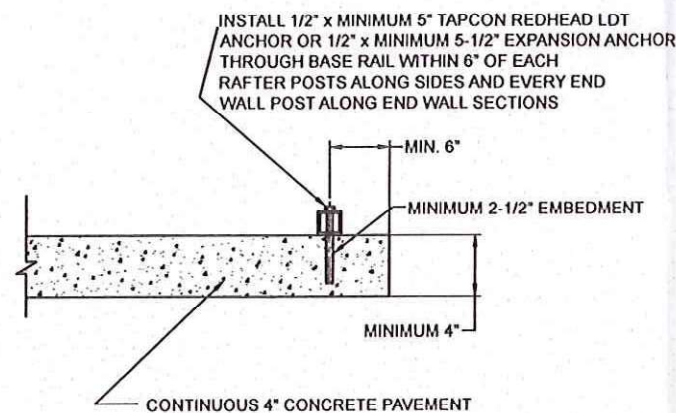
CAROLINA CARPORTS, INC.
GENERIC PLANS FOR USE IN THE STATE OF FLORIDA

BECHTOL ENGINEERING AND TESTING, Inc.
CONSULTING GEOTECHNICAL, ENVIRONMENTAL, AND MATERIALS TESTING ENGINEERS
Certificate of Authorization No. 00005493

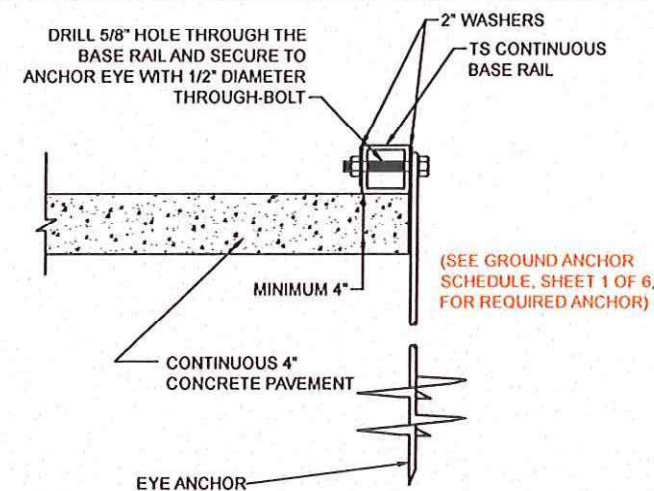
| | |
|----------|--------------|
| FIELD | DATE |
| 1/1/2024 | |
| DRWN | MKB / CS |
| SCALE | NTS |
| CHECKED | TB / CS |
| PROJ NO | G24001 |
| APPROVED | TB / LP |
| | SHEET 3 OF 6 |



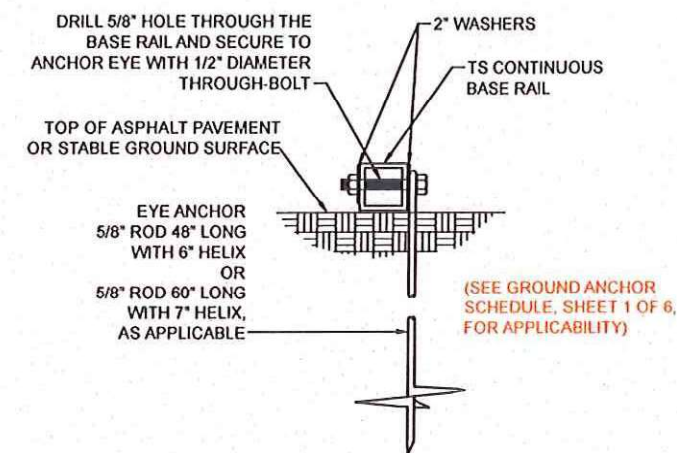
1A CONCRETE BASE RAIL ANCHORAGE
Not To Scale



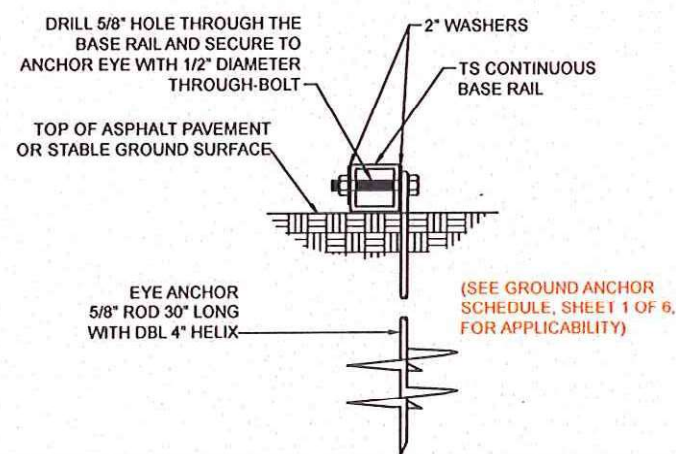
1B CONCRETE BASE RAIL ANCHORAGE
Not To Scale (OPTIONAL - OPEN CARPORTS ONLY)



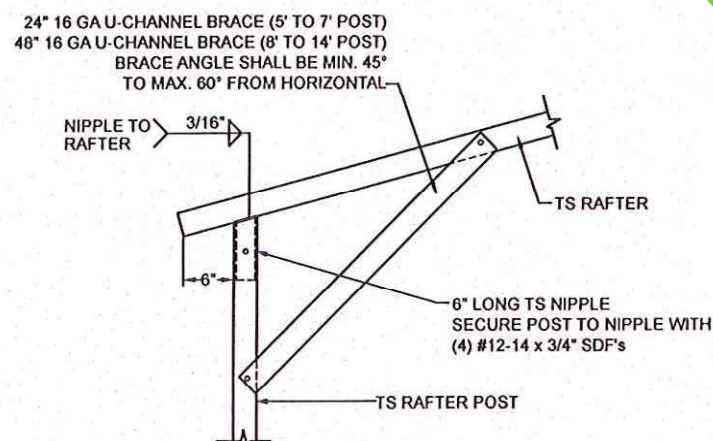
1C CONCRETE BASE RAIL ANCHORAGE
Not To Scale (OPEN CARPORTS WHERE SLAB EDGE DISTANCE DOES NOT MEET MINIMUM EDGE DISTANCE SHOWN IN DETAIL 1B)



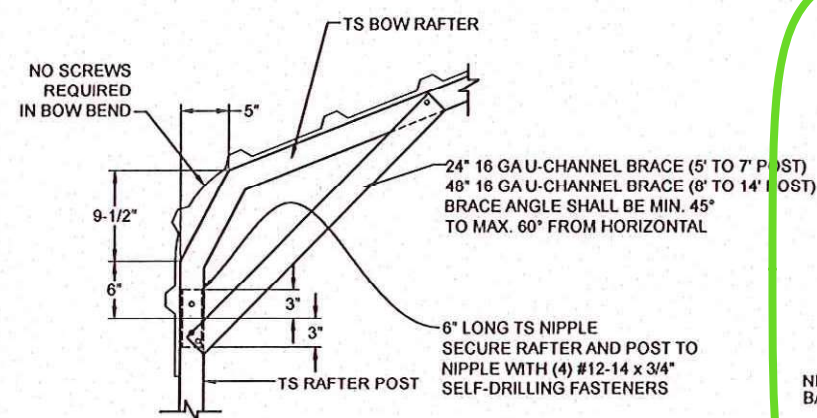
1D BASE RAIL DEEP ANCHORAGE
Not To Scale



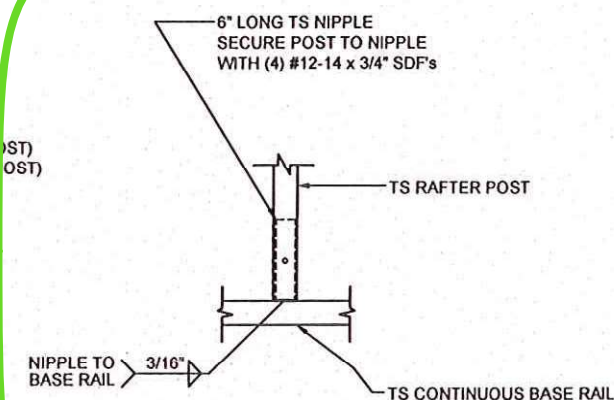
1E BASE RAIL ANCHORAGE
Not To Scale



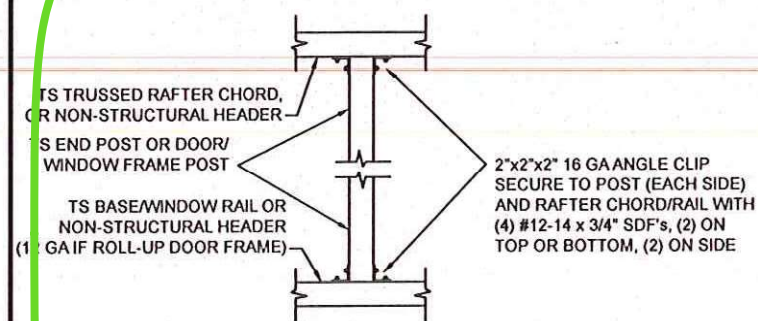
2A BOX EAVE RAFTER/POST DETAIL
Not To Scale



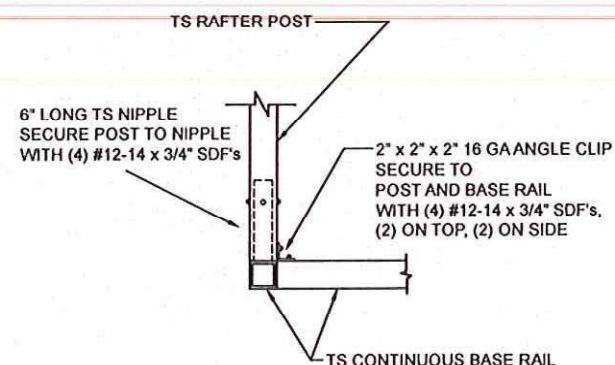
2B BOW RAFTER/POST DETAIL
Not To Scale



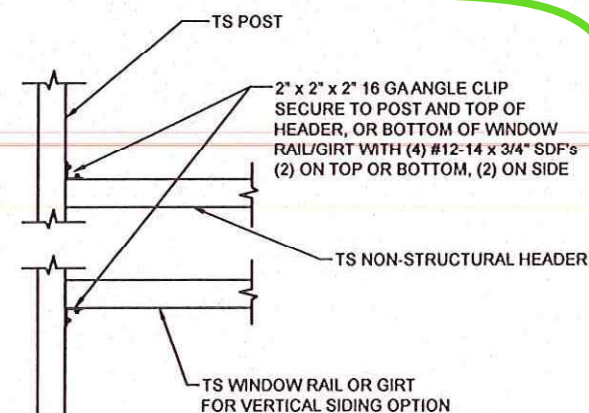
3 POST/BASE RAIL CONN. DETAIL
Not To Scale



4 POST TO RAIL, TRUSS CHORD, OR NON-STRUCTURAL HEADER CONN. DETAIL
Not To Scale



5 END POST/BASE RAIL CONN.
Not To Scale



6 NON-STRUCTURAL HEADER, WINDOW RAIL, OR GIRT TO POST CONN. DETAIL
Not To Scale

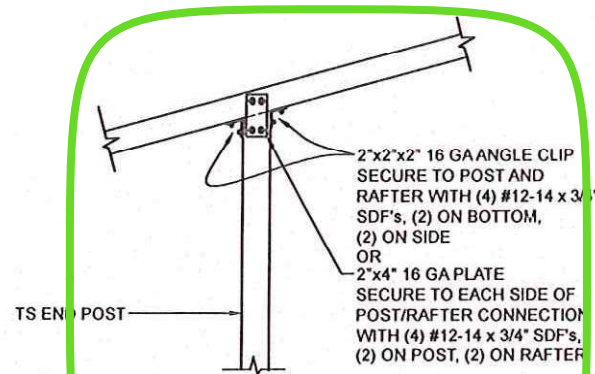
BECHTOL ENGINEERING AND TESTING, INC.
605 WEST NEW YORK AVENUE
DELAND, FLORIDA 32720

DOVE H. PATEL
LICENSE
No. 90753
PROFESSIONAL ENGINEER
STATE OF FLORIDA

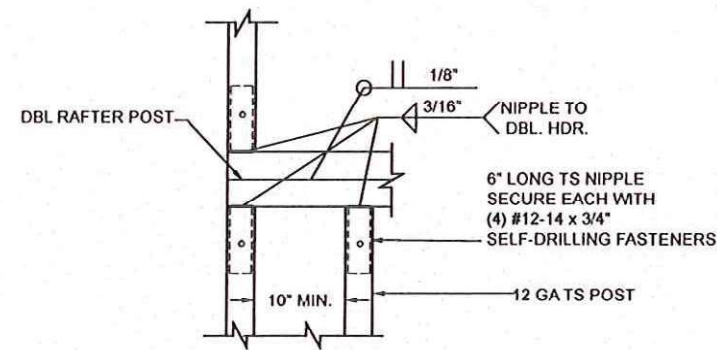
CAROLINA CARPORTS, INC.
GENERIC PLANS FOR USE IN THE STATE OF FLORIDA

| | | |
|----------|----------|--------------|
| FIELD | DATE | 1/1/2024 |
| DRAWN | MKB / CS | SCALE |
| CHECKED | TB / CS | PROJ NO |
| APPROVED | TB / LP | SHEET 4 OF 6 |

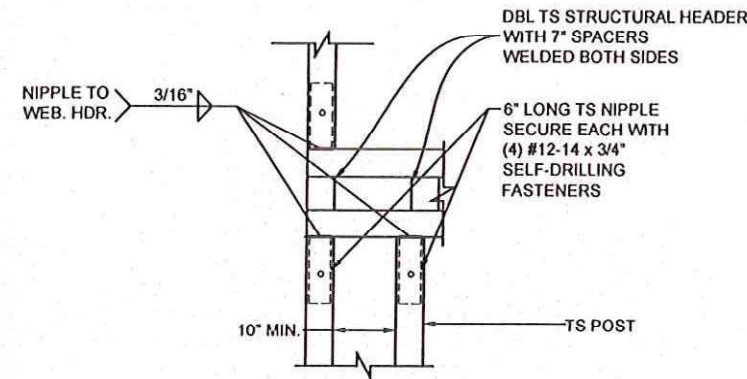
BECHTOL ENGINEERING AND TESTING, Inc.
CONSULTING GEOTECHNICAL, ENVIRONMENTAL, AND MATERIALS TESTING ENGINEERS
Certificate of Authorization No. 00000002



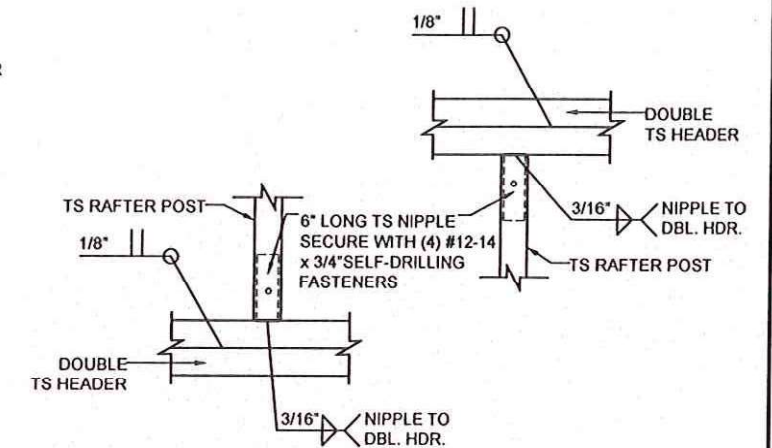
7 END POST/RAFTER CONN. DETAIL
Not To Scale



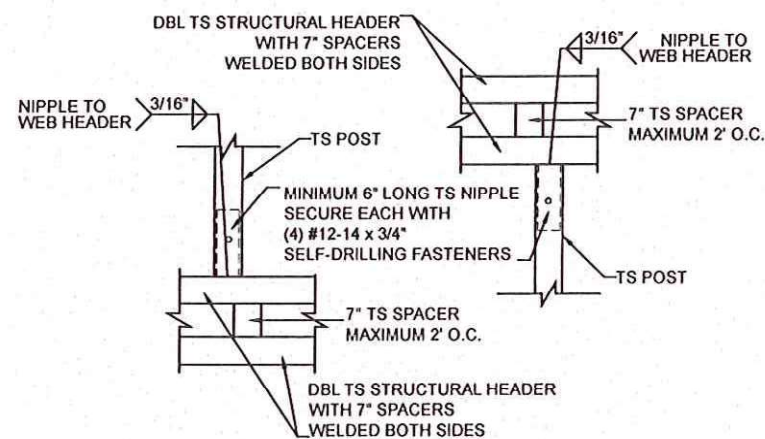
8A RAFTER POST/DBL. HEADER DETAIL
Not To Scale



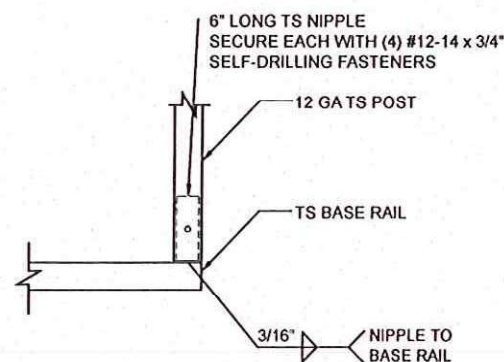
8B RAFTER POST/WEB HEADER DETAIL
Not To Scale



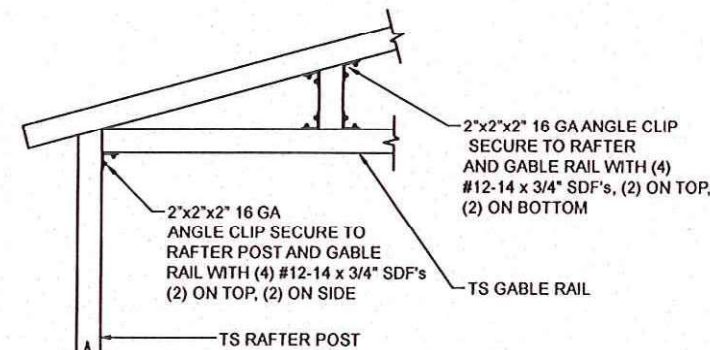
9A RAFTER POST/HEADER DETAIL
Not To Scale



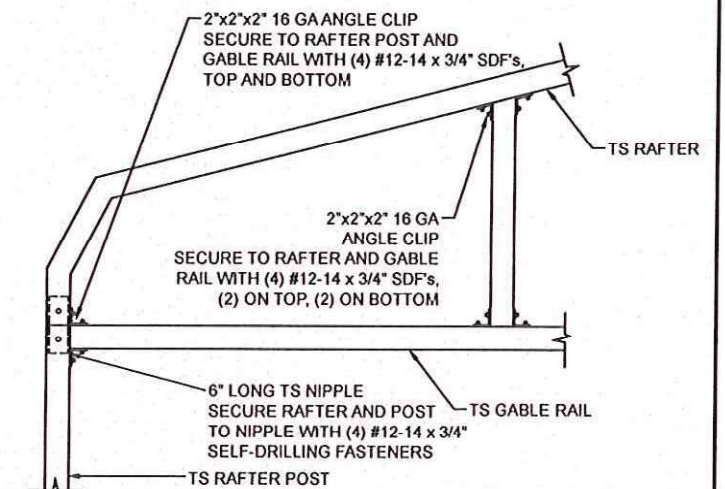
9B STRUCTURAL HEADER TO POST CONNECTION DETAIL
Not To Scale



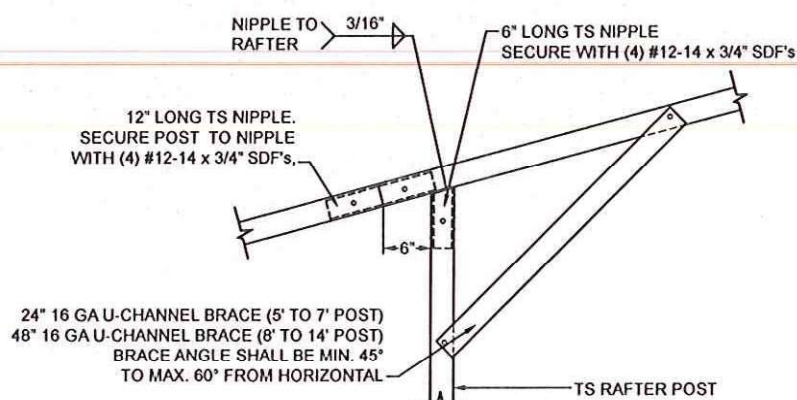
10 FRAMEOUT/ ROLL UP POST / BASE RAIL CONN. DETAIL
Not To Scale



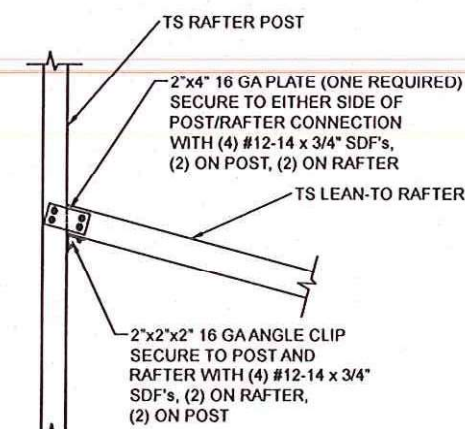
11A GABLE RAIL TO RAFTER POST CONNECTION DETAIL
Not To Scale



11B GABLE RAIL TO RAFTER POST CONNECTION DETAIL
Not To Scale

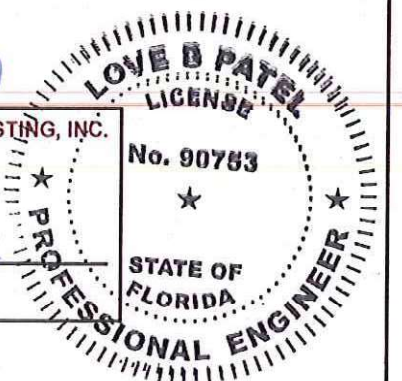


12 SIDE EXTENSION RAFTER/POST DETAIL
Not To Scale



13 POST / LEAN-TO RAFTER CONN. DETAIL
Not To Scale

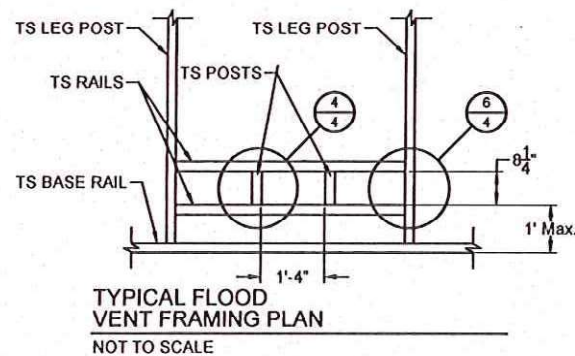
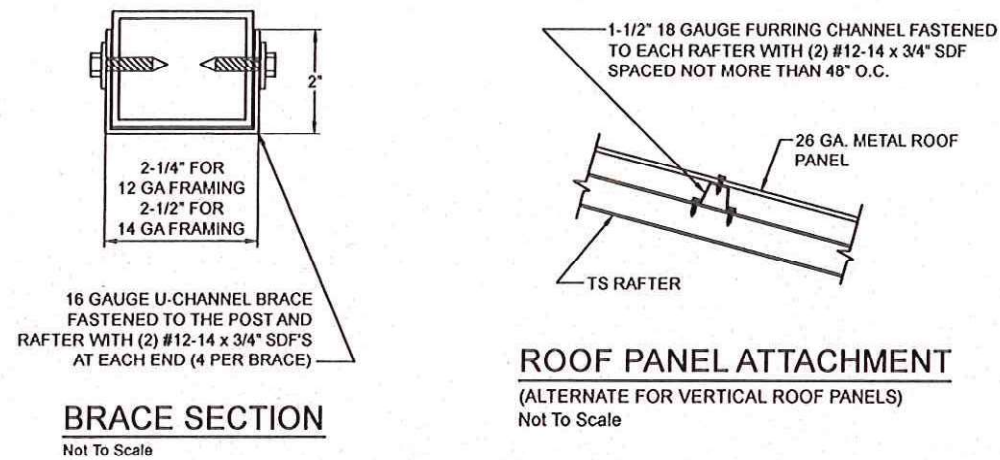
BECHTOL ENGINEERING AND TESTING, INC.
605 WEST NEW YORK AVENUE
DELAND, FLORIDA 32720



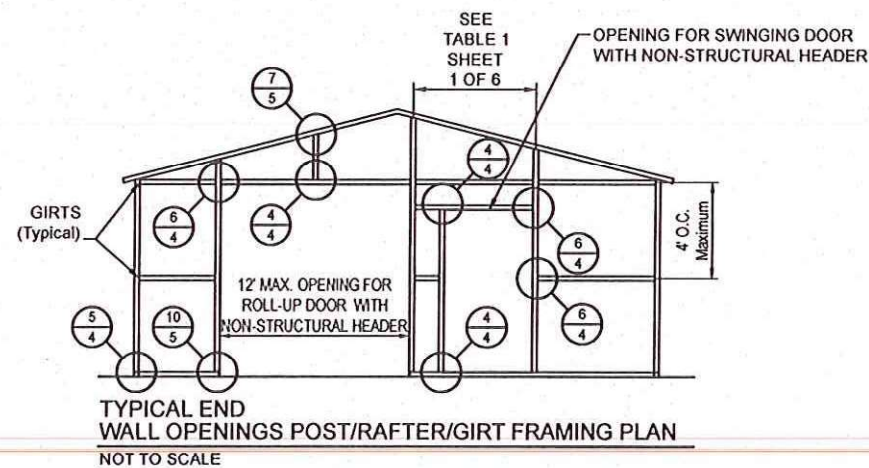
CAROLINA CARPORTS, INC.
GENERIC PLANS FOR USE IN THE STATE OF FLORIDA

| | | |
|--|------------------|----------------|
| | DATE 1/1/2024 | |
| | DESIGN MKB / CS | SCALE NTS |
| | CHECKED TB / CS | PROJ NO G24001 |
| | APPROVED TB / LP | SHEET 5 OF 6 |

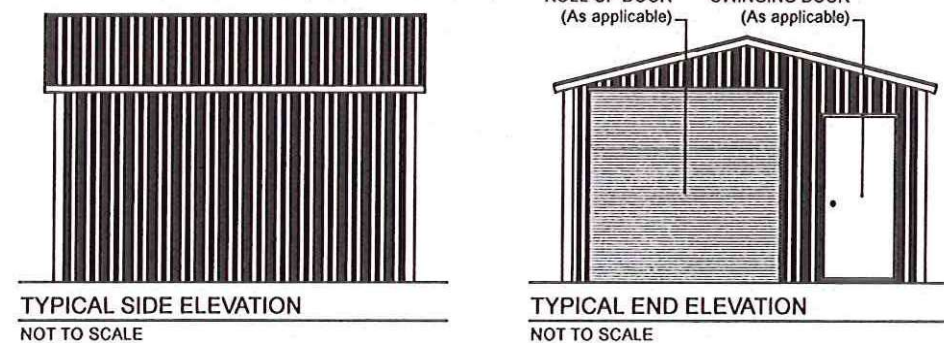
VERTICAL SIDE OPTION



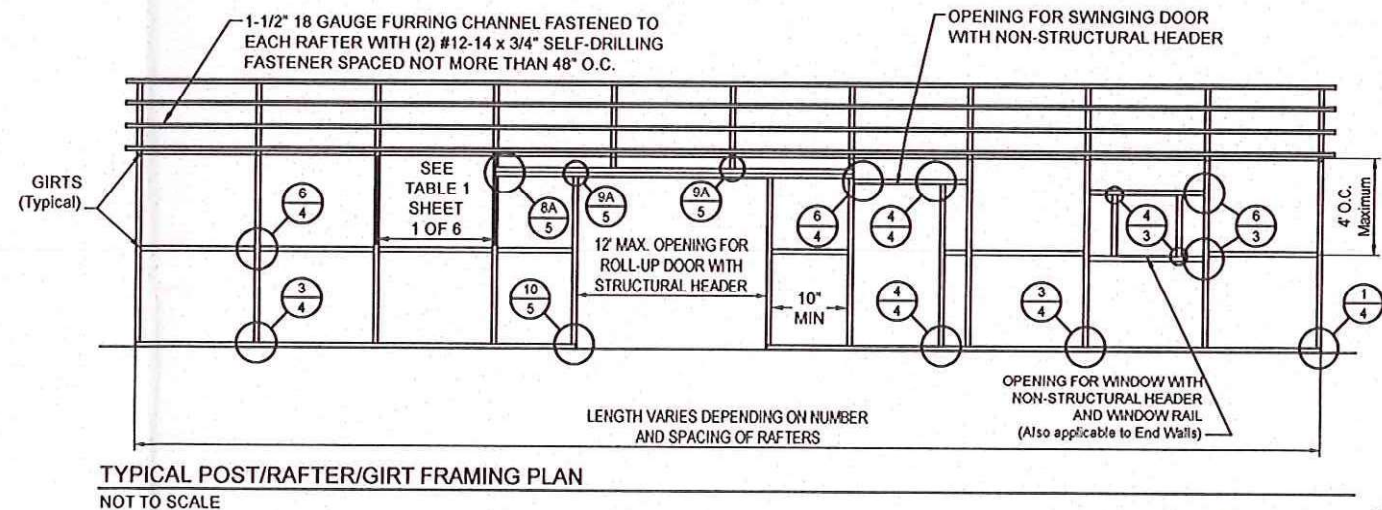
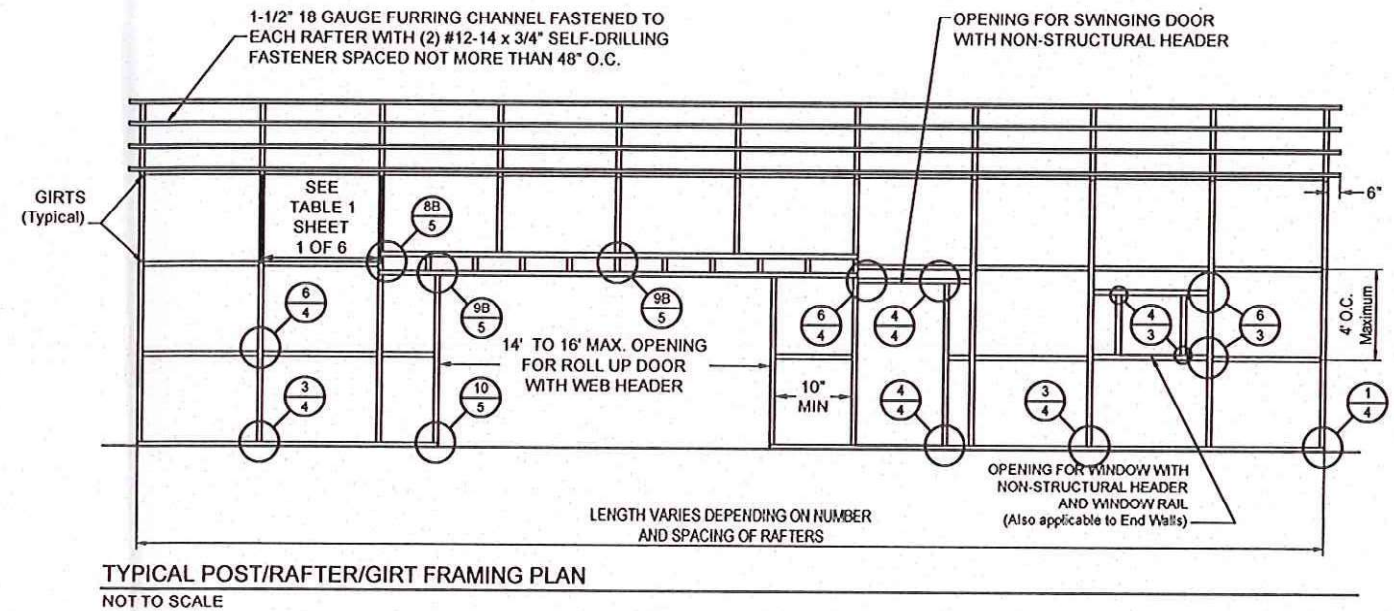
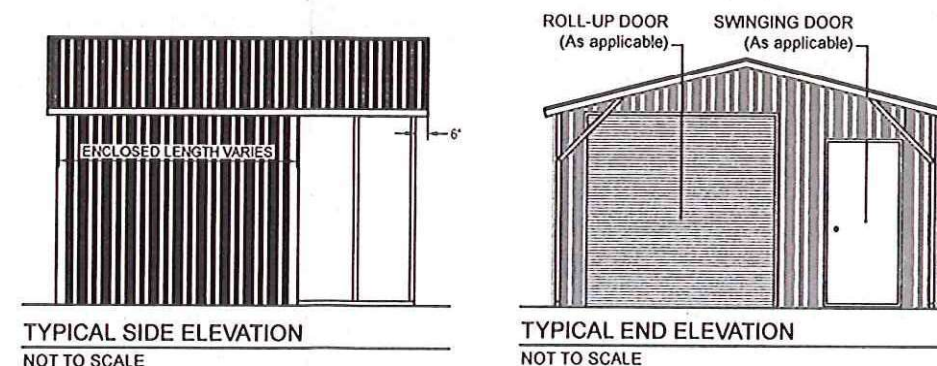
SEE GENERAL NOTE No. 12, SHEET 1 OF 6.



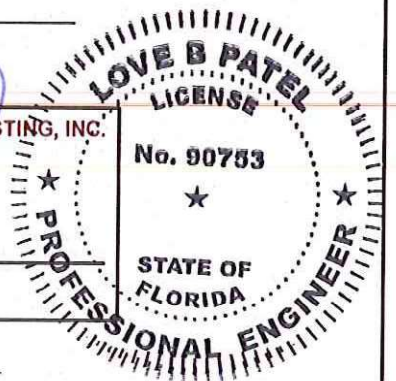
BOX EAVE FRAME RAFTER ENCLOSED BLDG - VERTICAL SIDES



BOX EAVE FRAME RAFTER UTILITY BLDG - VERTICAL SIDES



BECHTOL ENGINEERING AND TESTING, INC.
605 WEST NEW YORK AVENUE
DELAND, FLORIDA 32720



CAROLINA CARPORTS, INC.
GENERIC PLANS FOR USE IN THE STATE OF FLORIDA

| | | | |
|--|----------|--------|-----------------|
| | FIELD | DATE | 1/1/2024 |
| | DRAWN | MKB/CS | SCALE NTS |
| | CHECKED | TB/CS | PROJ NO. G24001 |
| | APPROVED | TB/LP | SHEET 6 OF 6 |