

TABLE 1 BOW/RAFTER FRAME, END POST, GROUND ANCHOR AND PANEL FASTENER SPACING SPECIFICATIONS						
RISK CATEGORY	WIND EXPOSURE CATEGORY	ULTIMATE WIND SPEED (MPH)	NOMINAL WIND SPEED (MPH)	MAXIMUM RAFTER/BOW AND END POST SPACING (FEET)	AVERAGE FASTENER SPACING ON-CENTERS ALONG RAFTERS OR PURLINS, AND POSTS OR GIRTS (INCHES)	
					INTERIOR BOWS/RAFTERS	END BOWS/RAFTERS
I, II, III, or IV	B, C, or D	115 TO 150	89 TO 116	5.0	6	6
		151 TO 180	117 TO 139	4.0	6	6
NOTES: 1. SPECIFICATIONS APPLICABLE TO 26 OR 29 GAUGE METAL PANELS FASTENED DIRECTLY TO 12,14 OR 15 GAUGE STEEL TUBE BOW FRAMES. 2. FASTENERS CONSIST OF #12-14X3/4" SDFS SELF-DRILLING SCREWS WITH CONTROL SEAL WASHER. 3. SPECIFICATIONS APPLICABLE ONLY FOR MEAN ROOF HEIGHT OF 20 FEET OR LESS, AND ROOF SLOPES OF 14°(3:12 PITCH). SPACING REQUIREMENTS FOR OTHER ROOF HEIGHTS AND/OR SLOPES MAY VARY. 4. GROUND ANCHOR REQUIREMENTS ARE 1 @ EACH CORNER AND ONE EVERY OTHER INTERIOR BOW/RAFTER POST LOCATION, AT MAXIMUM OF 10' O.C., AND BOTH SIDES OF OPENINGS WHERE BASE RAIL IS ABSENT. 5. GROUND ANCHORS ARE NOT REQUIRED WITH CONCRETE SLAB CONSTRUCTION.						

WINDOW AND DOOR NOTE

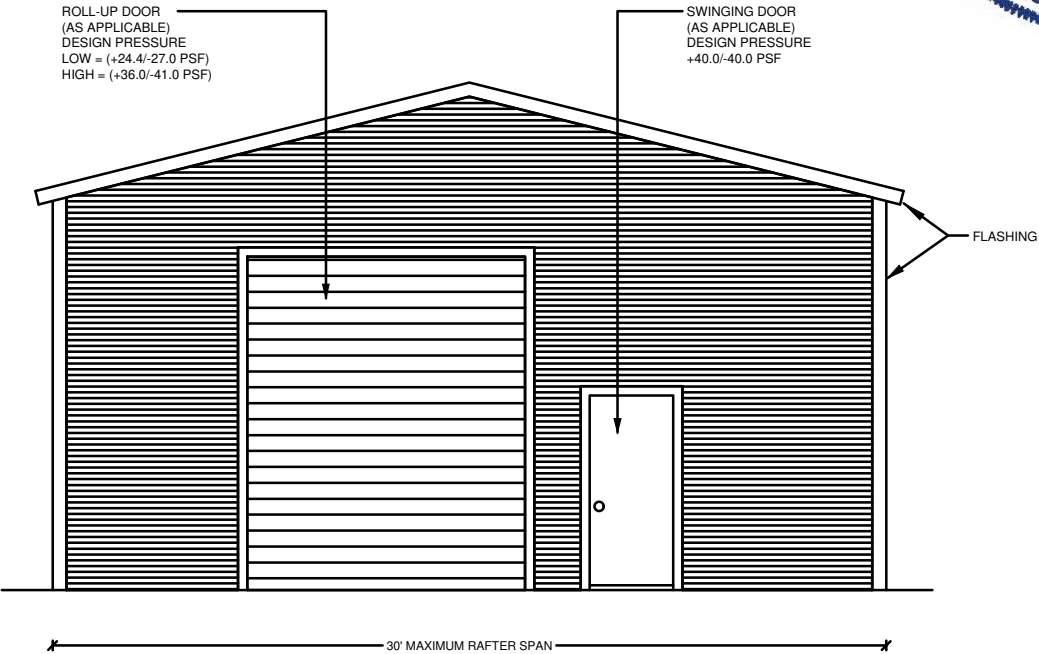
EXTERIOR WINDOWS AND GLASS DOORS SHALL BE TESTED BY AN APPROVED INDEPENDENT TESTING LABORATORY, AND BEAR AN AAMA OR WDMA OR OTHER APPROVED LABEL IDENTIFYING THE MANUFACTURER, PERFORMANCE CHARACTERISTICS AND APPROVED PRODUCT EVALUATION ENTITY TO INDICATE COMPLIANCE WITH THE REQUIREMENTS OF THE FOLLOWING SPECIFICATION.

ANSI/AAMA/NWDA 101/1S 2/97  
THE CONSTRUCTION SHALL BE TESTED IN ACCORDANCE WITH ASTM E 330, STANDARD TEST METHODS FOR STRUCTURAL PERFORMANCE OF EXTERIOR WINDOWS, CURTAIN WALLS, AND DOORS BY UNIFORM STATIC AIR PRESSURE.

DESIGN WAS DONE IN ACCORDANCE WITH THE 2020 FLORIDA BUILDING CODE 7TH EDITION( FBC) 2020 SUPPLEMENT AMENDMENTS 2006 INTERNATIONAL BUILDING CODE (IBC), 2009 IBC AND 2012 IBC.

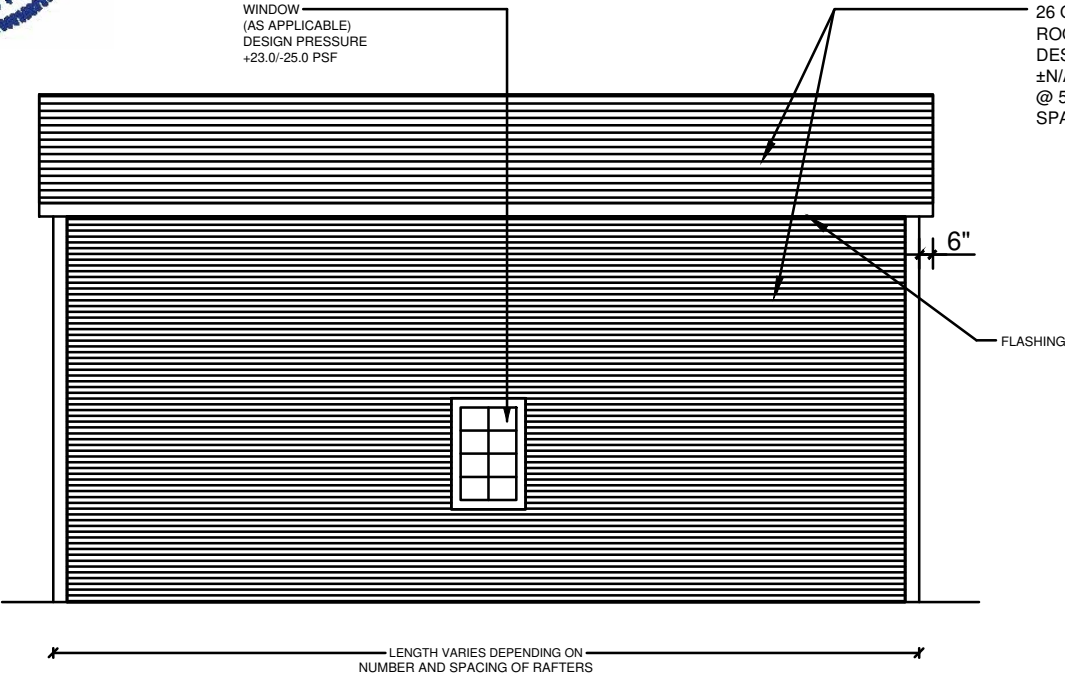
GENERAL NOTES:

- ALL STEEL SHALL BE 50 KSI STEEL.
- FASTEN METAL ROOF AND WALL PANELS TO FRAMING WITH 1/4" X 3/4" SELF DRILLING FASTENERS WITH CONTROL SEAL WASHER @ 6" O.C. AVERAGE.
- ALL FIELD CONNECTIONS SHALL BE #12-14X3/4" SDFS SELF DRILLING SCREWS.
- ALL SHOP CONNECTIONS SHALL BE WELDED.
- CONCRETE EXPANSION ANCHORS SHALL BE WEJ-IT ANKR-TITE MODEL AT 1252, OR SLEEVE ANCHOR MODEL HSA 1260, OR EQUIVALENT. GROUND ANCHOR REQUIREMENTS ARE 1@ EACH CORNER & ONE EVERY OTHER INTERIOR RAFTER POST LOCATION. AT A MAXIMUM 10'-0" O.C., AND BOTH SIDES OF OPENINGS WHERE BASE RAIL IS ABSENT. GROUND ANCHORS ARE NOT REQUIRED FOR CONCRETE FOOTING AND/OR CONCRETE SLAB CONSTRUCTION.
- POST/RAFTER BRACING: BRACE ON EVERY POST/RAFTER CONNECTION, EXCEPT FOR END WALLS.



TYPICAL END ELEVATION-HORIZONTAL ROOF

SCALE: NOT TO SCALE



TYPICAL SIDE ELEVATION-HORIZONTAL ROOF

SCALE: NOT TO SCALE

- NOTE:
- THIS ITEM HAS BEEN SIGNED AND SEALED BY RAM A. GOEL USING A DIGITAL SIGNATURE & DATE.
  - PRINTED COPIES OF THIS DOCUMENT ARE NOT CONSIDERED SIGNED & SEALED. THIS SIGNATURE MUST BE VERIFIED ON ANY ELECTRONIC COPIES.

THE FOLLOWING IS COMPLIANT TO THE FLORIDA BUILDING CODE 2020, 7TH EDITION AND ASCE 7-16 FOR WIND LOADS OF 180 MPH

THIS DRAWING IS AN INSTRUMENT OF SERVICE AND SHALL REMAIN THE PROPERTY OF THE ENGINEER, AND SHALL NOT BE REPRODUCED, PUBLISHED OR USED IN ANY WAY WITHOUT THE WRITTEN CONSENT OF THE ENGINEER. COPYRIGHT 2021 NOT PUBLISHED THIS IS TO CERTIFY THAT I HAVE REVIEWED THIS PLAN AND FOUND TO BE IN COMPLIANCE WITH CHAPTER 16 OF 2020 7TH EDITION FLORIDA BUILDING CODE AND APPLICABLE SUPPLEMENTS.

RAM A. GOEL, P.E. # 47431

COPIES OF THESE PLANS ARE NOT VALID UNLESS EMBOSSED WITH THE SIGNING ENGINEER'S SEAL



DR. RAM A. GOEL, PH.D., P.E.  
F.P.E. 47431.

SONEY FM LLC  
CORY LAKE PROFESSIONAL CENTER  
10329 CROSS CREEK BLVD., SUITE P  
TAMPA, FL 33647  
Ph: 727-420-4796  
Fax: (813) 972-2846  
www.soneyfmllc.com

Job # 2173

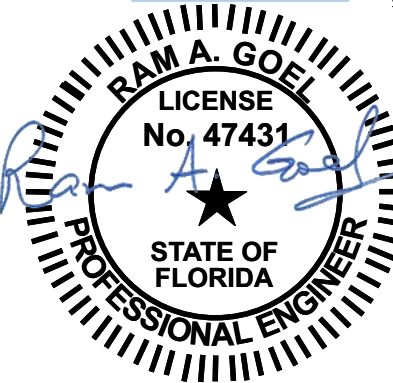
Drawn By: S.K.

Checked By: R.G.

Issue Date: 08-18-21

Revisions:		
No.	Date	Description
1	11	
2	11	
3	11	
4	11	

Digitally signed by Ram Goel  
DN:  
E=Soneyfmllc@yahoo.com,  
CN=Ram Goel,  
OU=ENGINEERING,  
O=Soney FM LLC,  
L=Tampa, S=Florida, C=US  
Date: 2021.10.11  
14:14:50-04'00'



PREFABRICATED UTILITY STRUCTURE

ELITE METAL MANUFACTURING, LLC  
10121 88TH TRACE  
LIVE OAK, FL 32060

DR. RAM A. GOEL, PH.D., P.E.  
F.P.E. 47431.

SONEY FM LLC  
CORY LAKE PROFESSIONAL CENTER  
10329 CROSS CREEK BLVD., SUITE P  
TAMPA, FL 33647  
Ph: 727-420-4796  
Fax: (813) 972-2846  
www.soneyfmllc.com

Job # 2173

Drawn By: S.K.

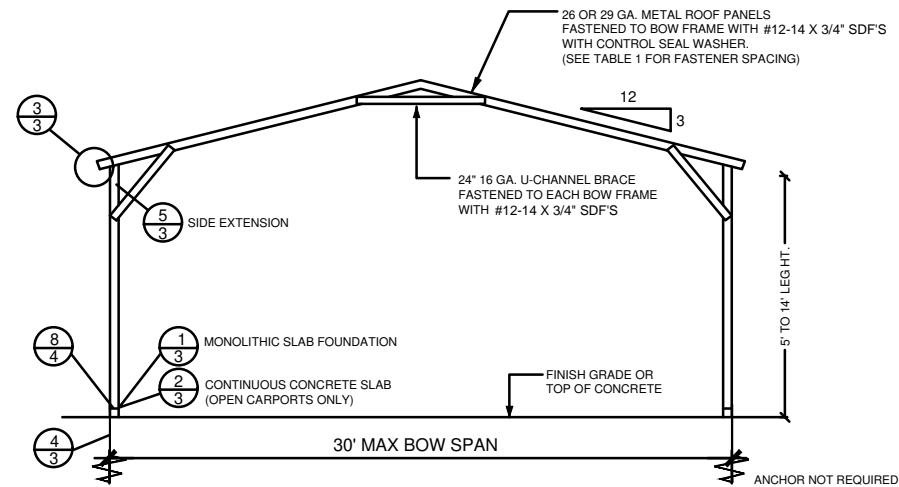
Checked By: R.G.

Issue Date: 08-18-21

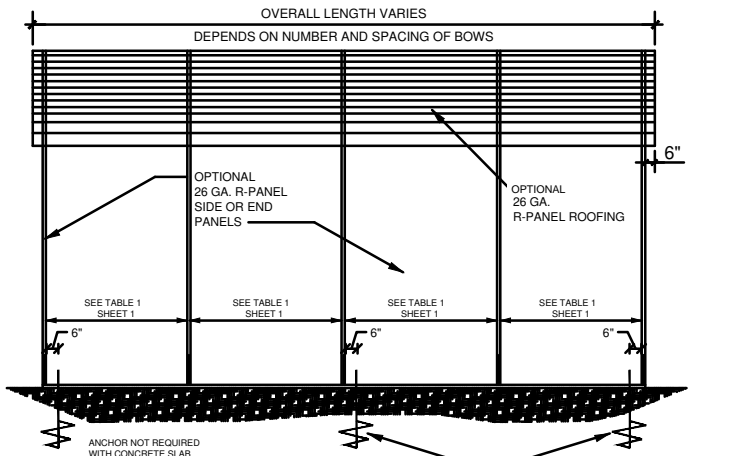
No.	Date	Description
1	11	
2	11	
3	11	

PREFABRICATED UTILITY STRUCTURE

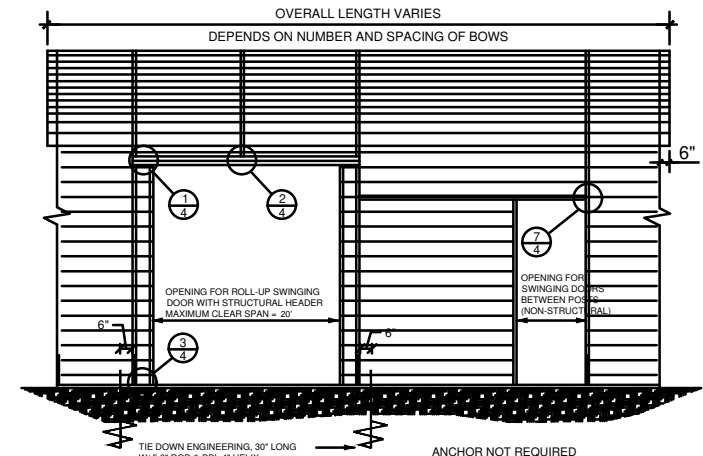
ELITE METAL MANUFACTURING, LLC  
10121 88TH TRACE  
LIVE OAK, FL 32060



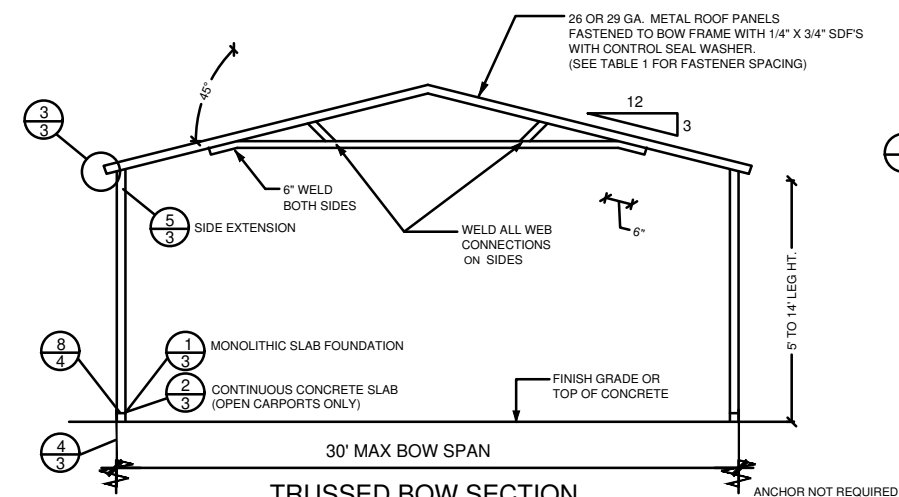
**TYPICAL BOW SECTION**  
NOT TO SCALE



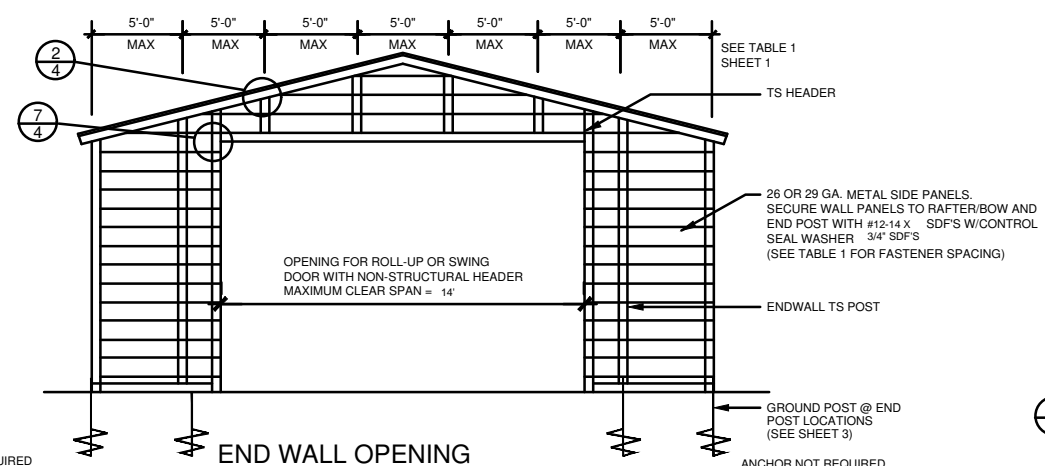
**SIDE ELEVATION**  
NOT TO SCALE



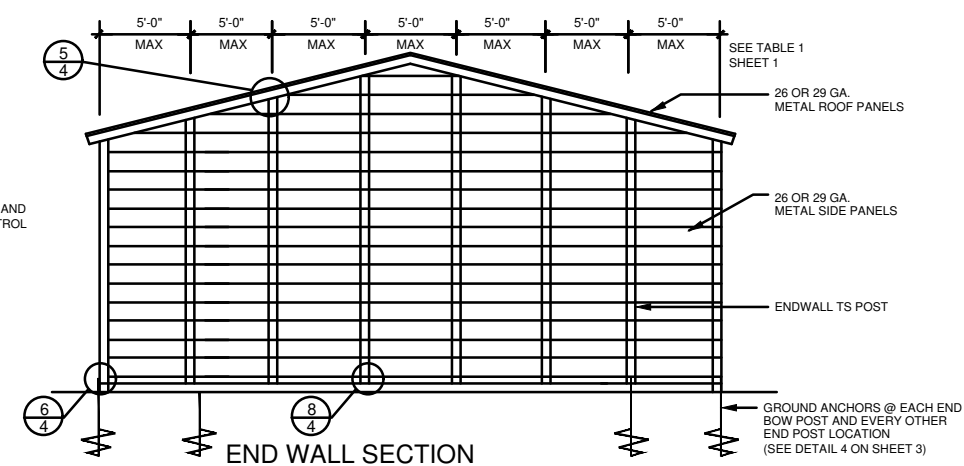
**SIDE OPENINGS**  
NOT TO SCALE



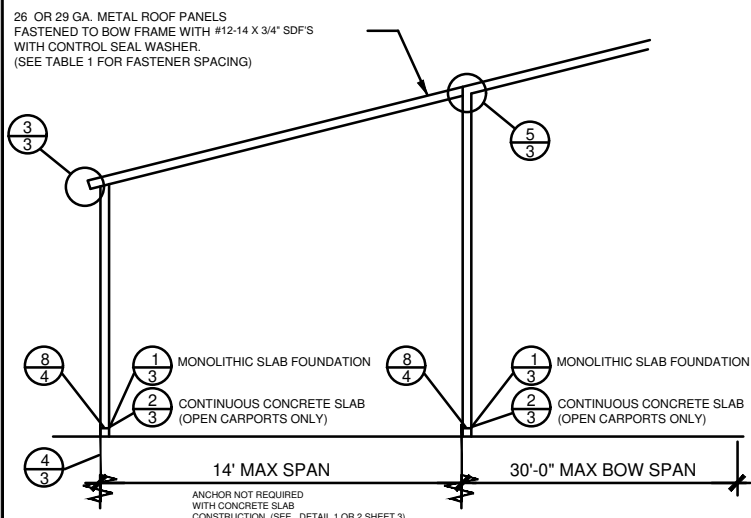
**TRUSSED BOW SECTION**  
NOT TO SCALE



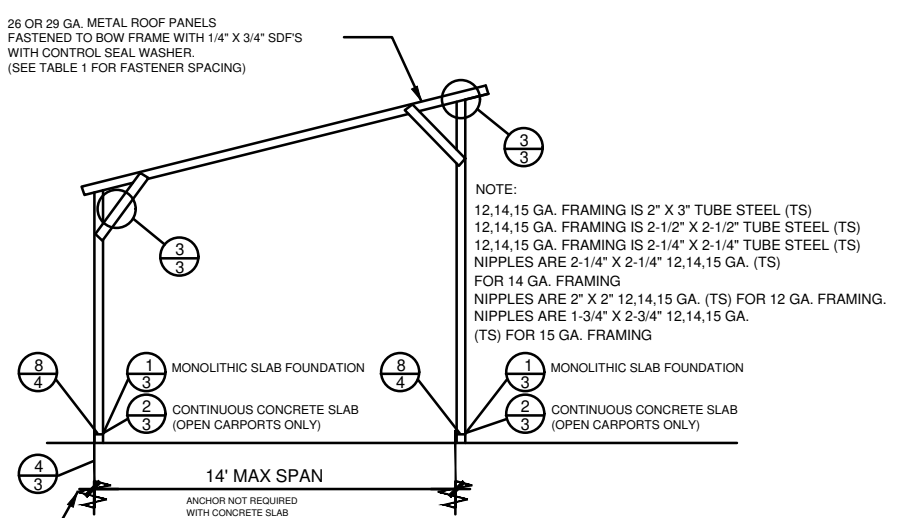
**END WALL OPENING**  
NOT TO SCALE



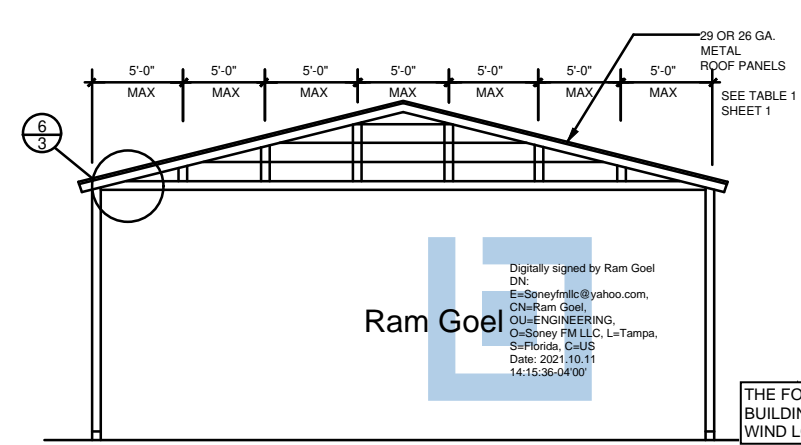
**END WALL SECTION**  
NOT TO SCALE



**TYPICAL SIDE EXTENSION SECTION**  
NOT TO SCALE

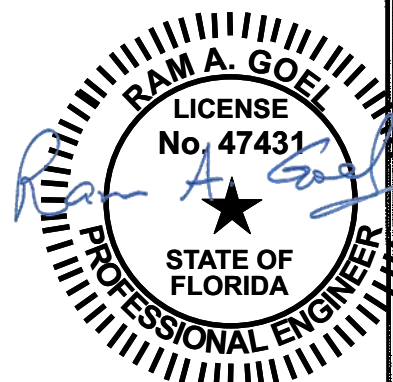


**TYPICAL FREESTANDING LEAN-TO**  
NOT TO SCALE



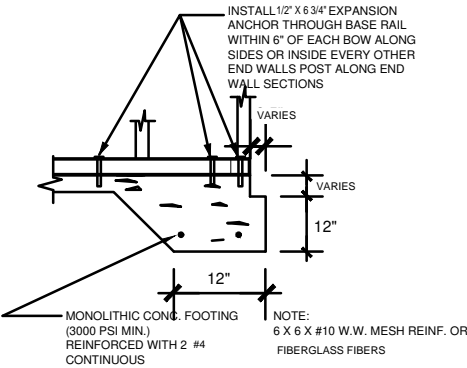
**GABLED OPEN END WALL SECTION**  
NOT TO SCALE

NOTE:  
1. THIS ITEM HAS BEEN SIGNED AND SEALED BY  
RAM A. GOEL USING A DIGITAL SIGNATURE & DATE.  
2. PRINTED COPIES OF THIS DOCUMENT ARE NOT  
CONSIDERED SIGNED & SEALED. THIS SIGNATURE MUST  
BE VERIFIED ON ANY ELECTRONIC COPIES.

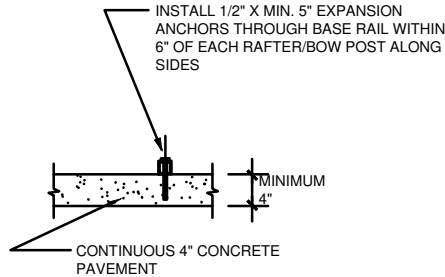


THE FOLLOWING IS COMPLIANT TO THE FLORIDA  
BUILDING CODE 2020, 7TH EDITION AND ASCE 7-16 FOR  
WIND LOADS OF 180 MPH

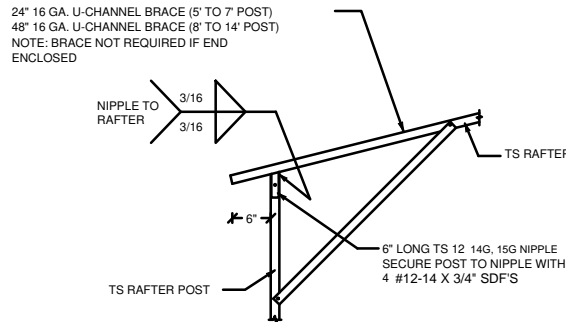
RAM A. GOEL, P.E. # 47431  
COPIES OF THESE PLANS ARE NOT VALID UNLESS  
EMBOSSED WITH THE SIGNING ENGINEER'S SEAL



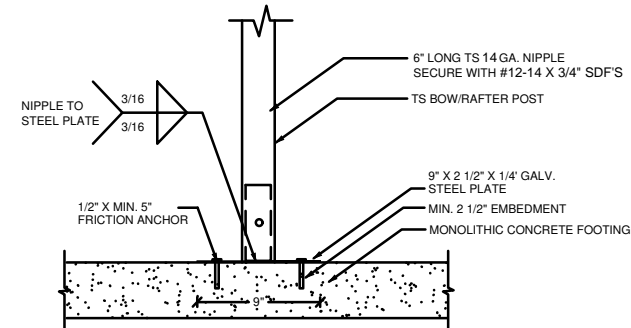
1 CONCRETE BASE RAIL ANCHORAGE  
SCALE: NTS (OPTIONAL)



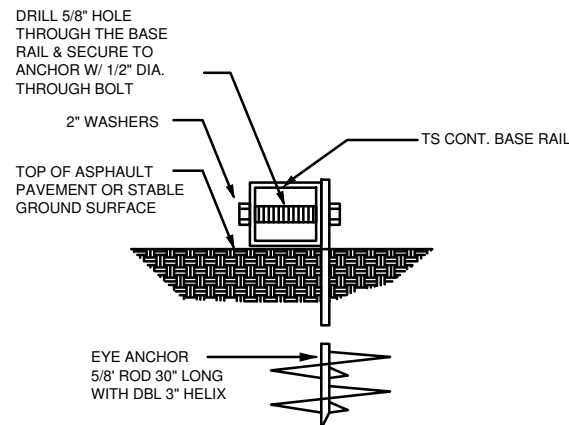
2 CONCRETE BASE RAIL ANCHORAGE  
SCALE: NTS (OPTIONAL - OPEN CARPORT ONLY)



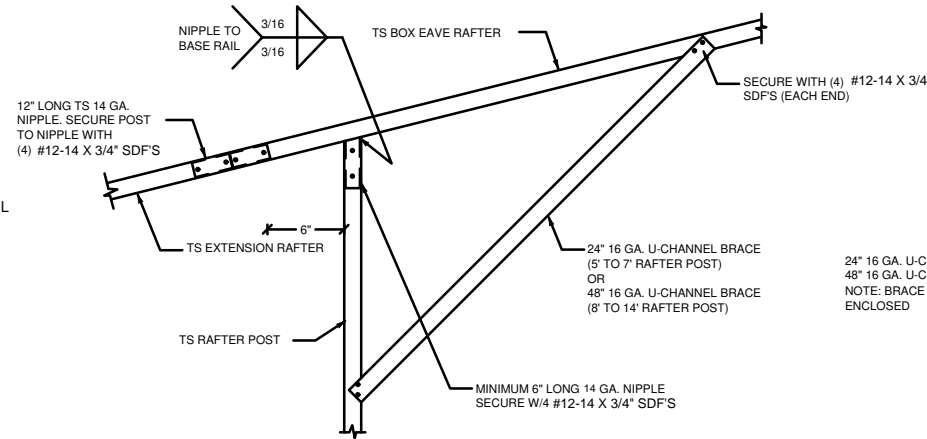
3 BOX EAVE RAFTER/CORNER POST DETAIL  
SCALE: NTS



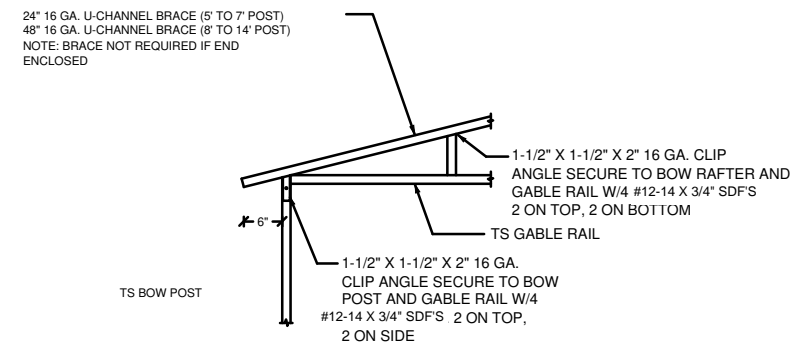
ALTERNATE POST TO CONCRETE FOUNDATION CONNECTION DETAIL  
SCALE: NTS



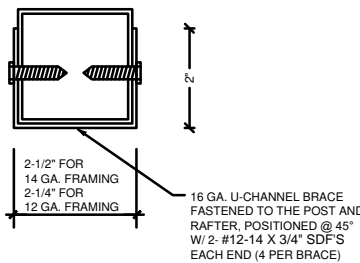
4 BASE RAIL ANCHORAGE  
SCALE: NTS



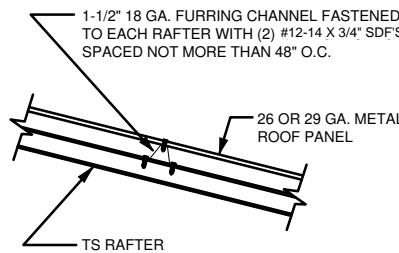
5 SIDE EXTENSION RAFTER/CORNER POST DETAIL  
SCALE: NTS



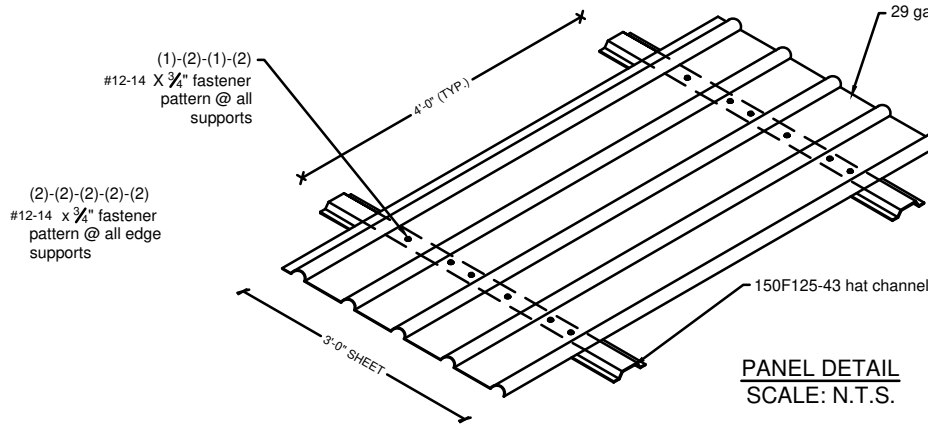
6 GABLE RAIL TO RAFTER POST CONNECTION DETAIL  
SCALE: NTS



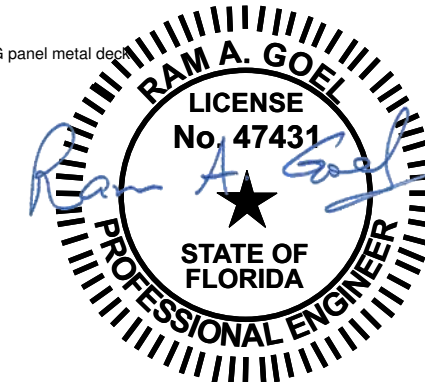
BRACE SECTION  
SCALE: NTS



ROOF PANEL ATTACHMENT  
ALTERNATE FOR VERTICAL ROOF PANELS  
SCALE: NTS



PANEL DETAIL  
SCALE: N.T.S.



THE FOLLOWING IS COMPLIANT TO THE FLORIDA BUILDING CODE 2020, 7TH EDITION AND ASCE 7-16 FOR WIND LOADS OF 180 MPH

NOTE:  
1. THIS ITEM HAS BEEN SIGNED AND SEALED BY RAM A. GOEL USING A DIGITAL SIGNATURE & DATE.  
2. PRINTED COPIES OF THIS DOCUMENT ARE NOT CONSIDERED SIGNED & SEALED. THIS SIGNATURE MUST BE VERIFIED ON ANY ELECTRONIC COPIES.

THIS DRAWING IS AN INSTRUMENT OF SERVICE AND SHALL REMAIN THE PROPERTY OF THE ENGINEER, AND SHALL NOT BE REPRODUCED, PUBLISHED OR USED IN ANY WAY WITHOUT THE WRITTEN CONSENT OF THE ENGINEER. COPYRIGHT 2021. NOT PUBLISHED. THIS IS TO CERTIFY THAT I HAVE REVIEWED THIS PLAN AND FOUND TO BE IN COMPLIANCE WITH CHAPTER 16 OF 2020 7TH EDITION FLORIDA BUILDING CODE AND APPLICABLE SUPPLEMENTS.

RAM A. GOEL, P.E. # 47431

COPIES OF THESE PLANS ARE NOT VALID UNLESS EMBOSSED WITH THE SIGNING ENGINEER'S SEAL



DR. RAM A. GOEL, PH.D., P.E.  
F.P.E. 47431.

SONEY FM LLC  
CORY LAKE PROFESSIONAL CENTER  
10329 CROSS CREEK BLVD., SUITE P  
TAMPA, FL 33647  
Ph: 727-420-4796  
Fax: (813) 972-2846  
www.soneyfmllc.com

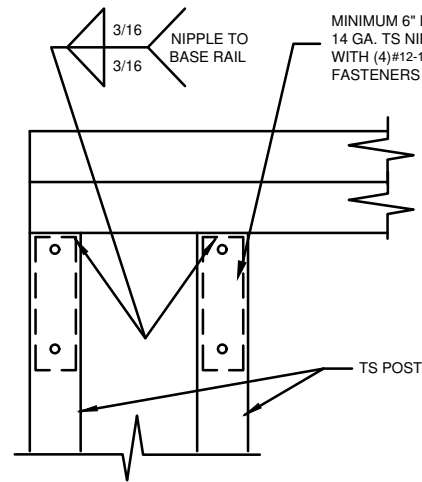
Job # 2173  
Drawn By: S.K.  
Checked By: R.G.

Issue Date: 08-18-21		
Revisions:		
No.	Date	Description
1	11	
2	11	
3	11	
4	11	

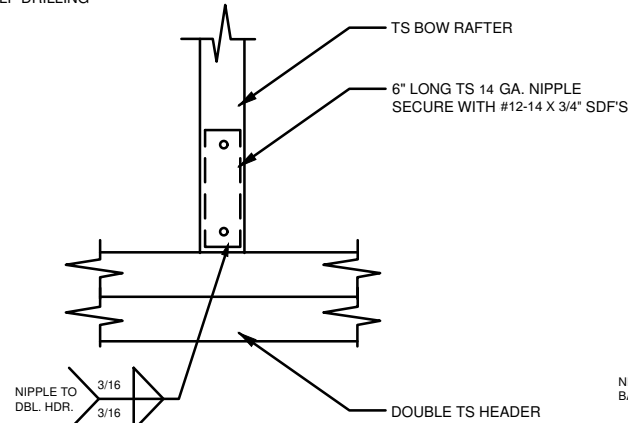
PREFABRICATED UTILITY STRUCTURE

ELITE METAL MANUFACTURING, LLC  
10121 88TH TRACE  
LIVE OAK, FL 32060

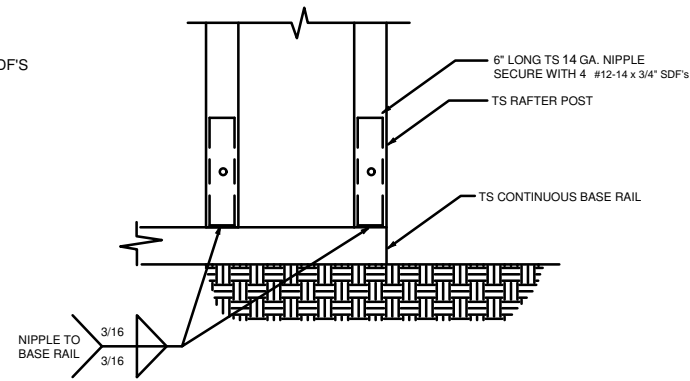




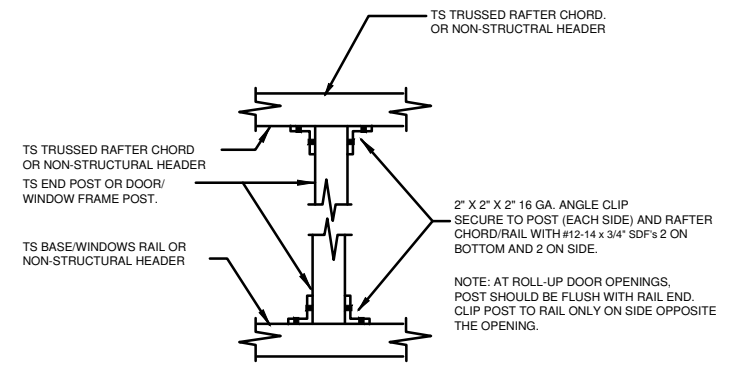
1 RAFTER POST/DBL. HEADER DETAIL  
SCALE: NTS



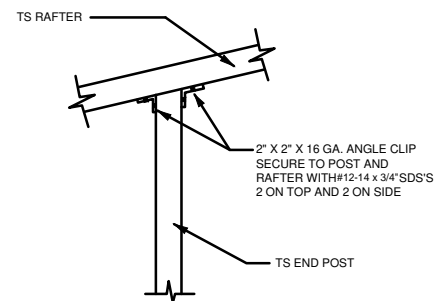
2 RAFTER POST/BASE  
BASE RAIL CONNECTION DETAIL  
SCALE: NTS



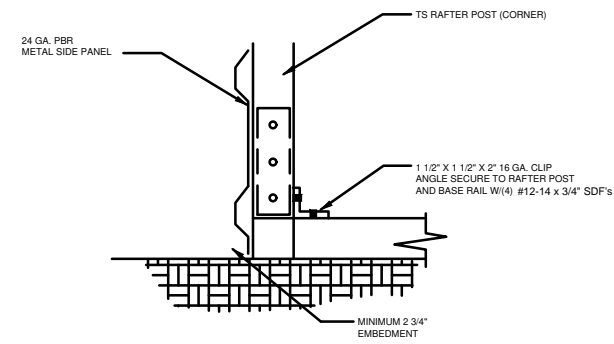
3 RAFTER POST/BASE  
BASE RAIL CONNECTION DETAIL  
SCALE: NTS



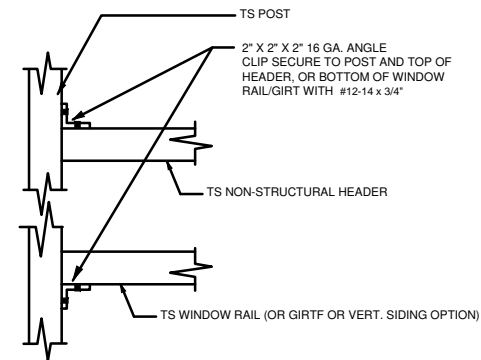
4 POST TO RAIL, TRUSS CHORD, OR  
NON-STRUCTURAL HEADER CONN. DETAIL  
SCALE: NTS



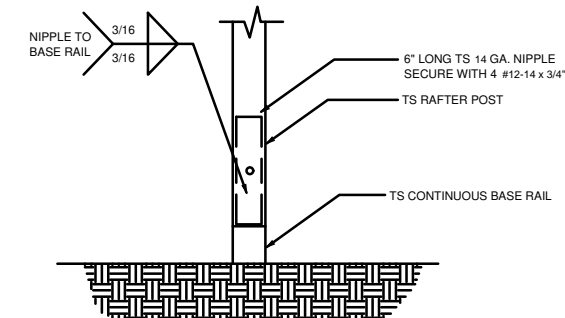
5 END POST/RAFTER CONN. DETAIL  
SCALE: NTS



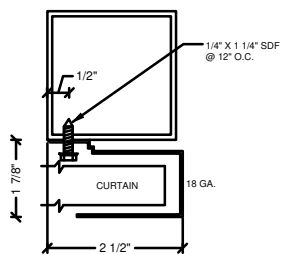
6 END POST/BASE RAIL CONN.  
SCALE: NTS



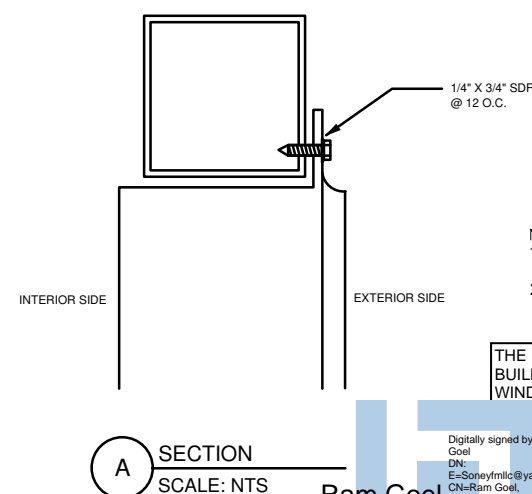
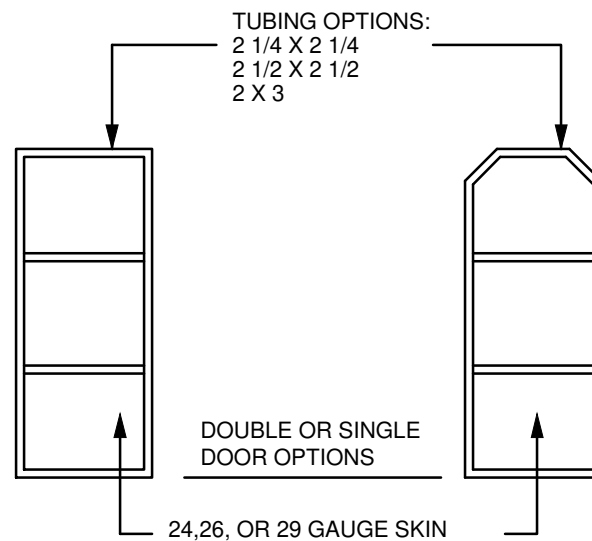
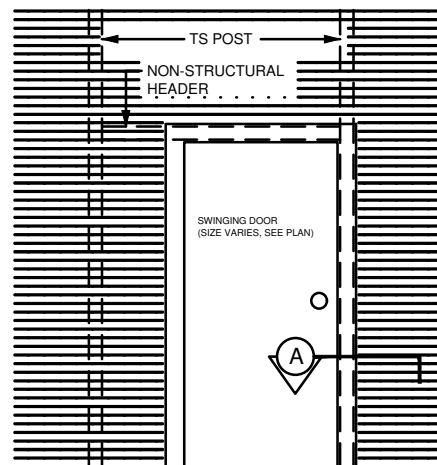
7 NON-STRUCTURAL HEADER, WINDOW  
RAIL, OR GIRT TO POST CONN. DETAIL  
SCALE: NTS



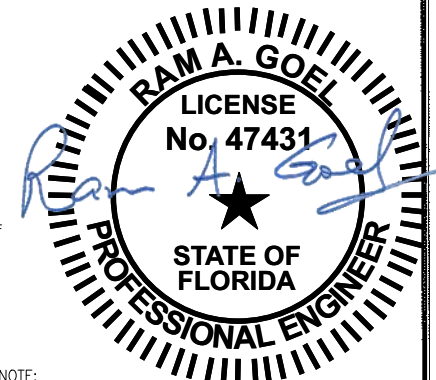
8 POST/BASE RAIL CONN. DETAIL  
SCALE: NTS



SECTION THROUGH ROLL UP  
DOOR HEADER  
SCALE: NTS  
CURTAIN 24 GA. PBR WITH BAKED ON EPOXY  
PRIMER & POLYESTER TOP COAT.



A SECTION  
SCALE: NTS  
Ram Goel



NOTE:  
1. THIS ITEM HAS BEEN SIGNED AND SEALED BY  
RAM A. GOEL USING A DIGITAL SIGNATURE & DATE.  
2. PRINTED COPIES OF THIS DOCUMENT ARE NOT  
CONSIDERED SIGNED & SEALED. THIS SIGNATURE MUST  
BE VERIFIED ON ANY ELECTRONIC COPIES.

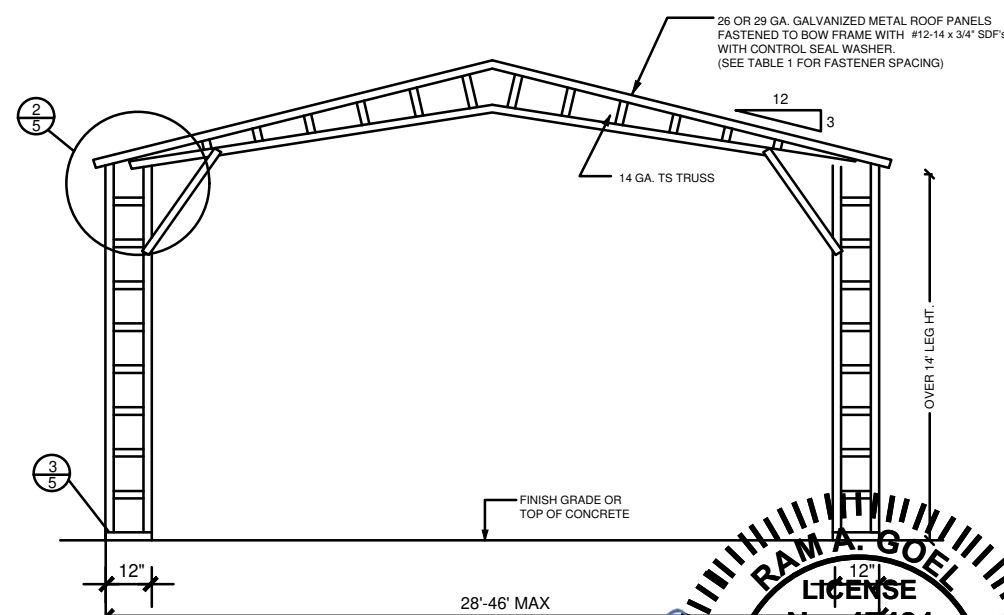
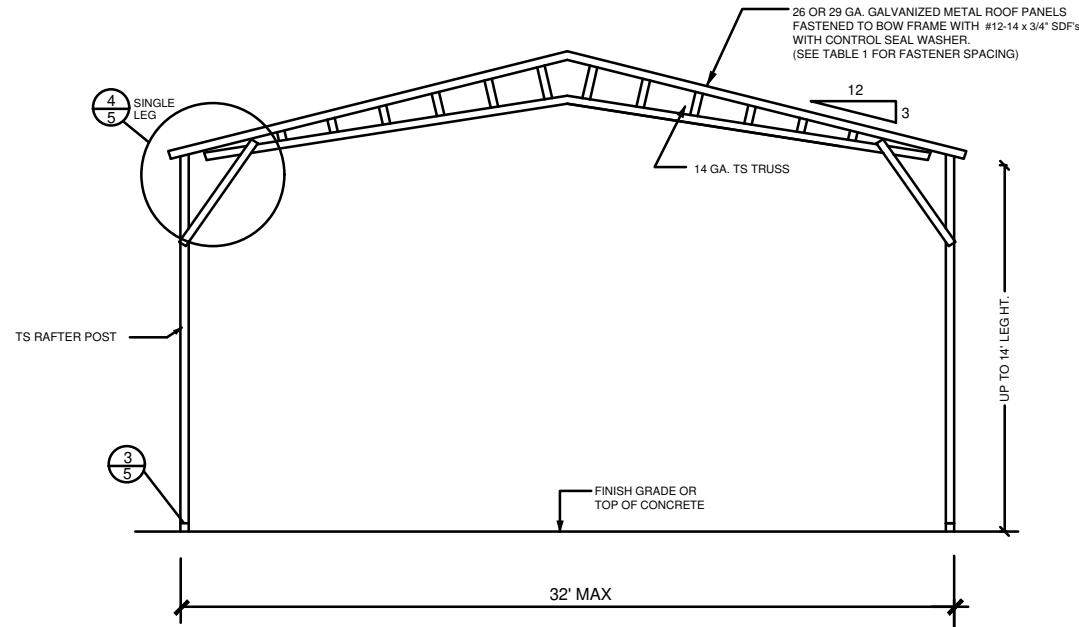
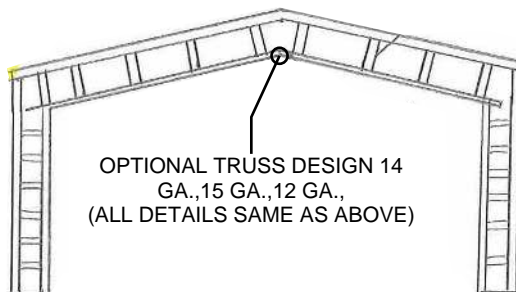
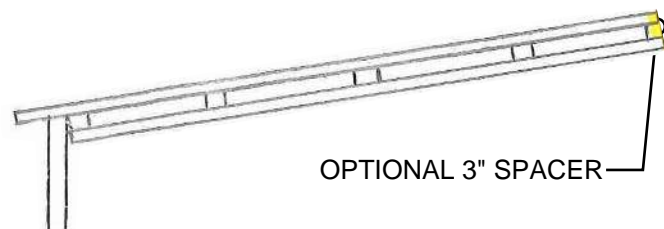
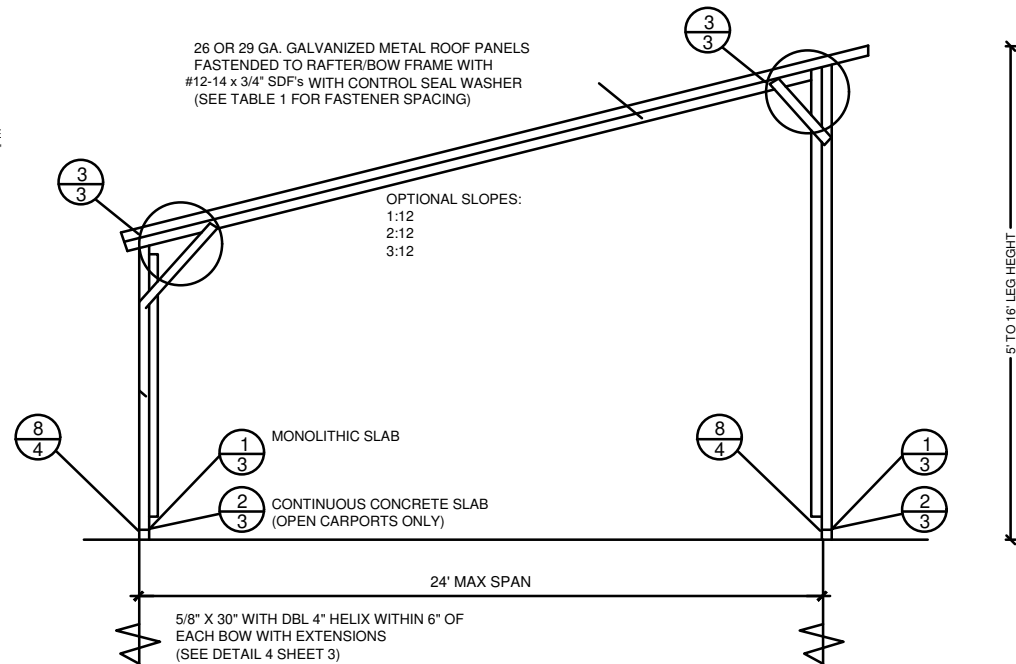
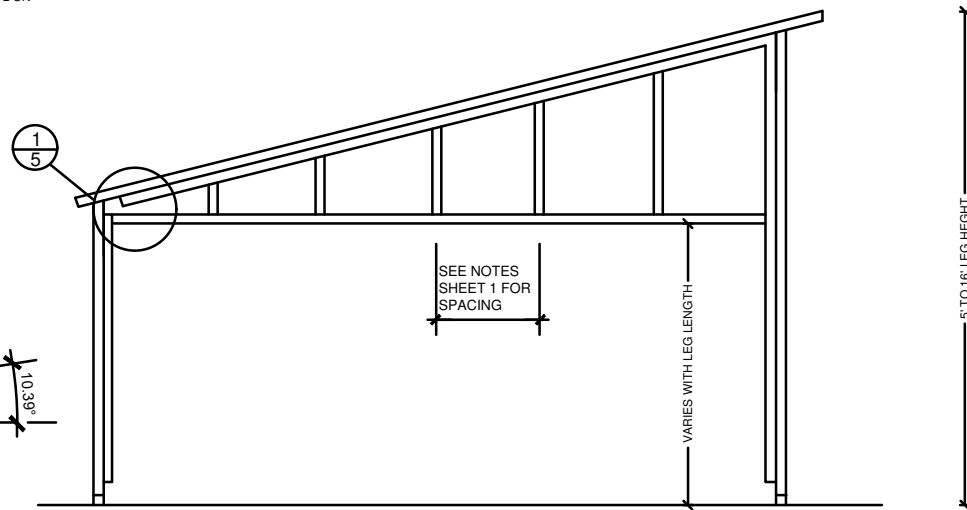
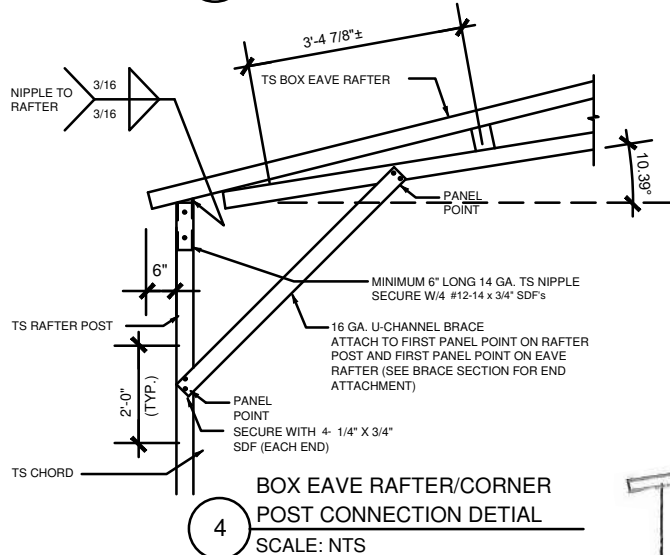
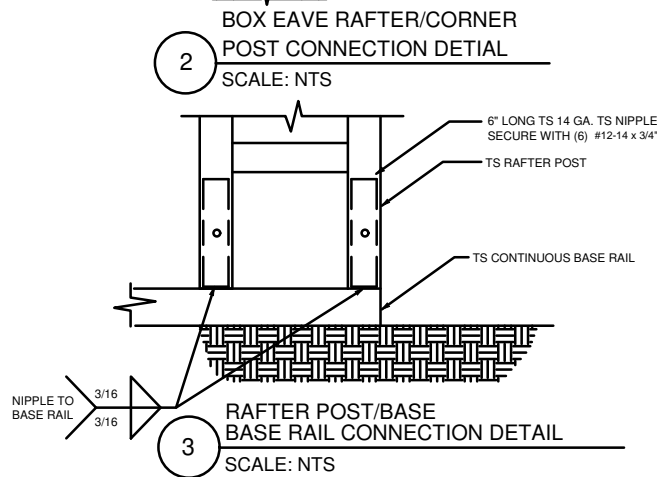
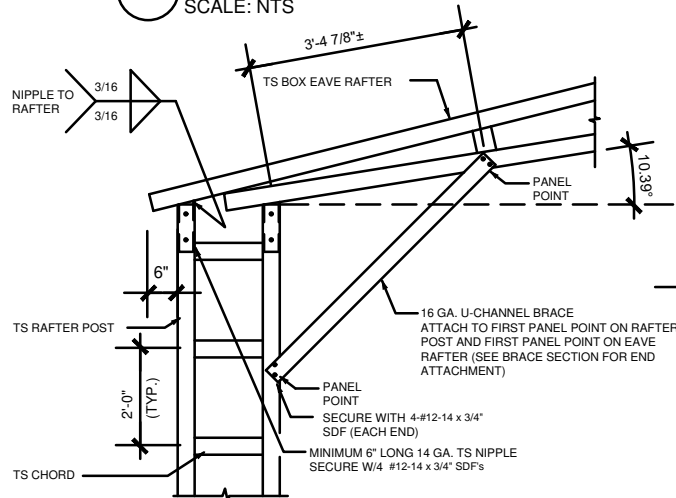
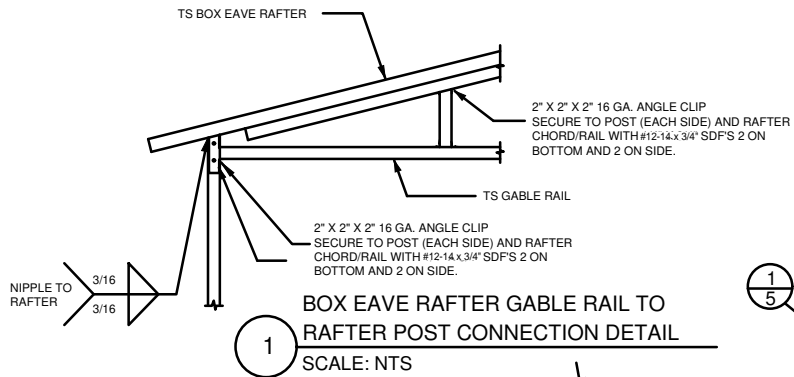
THE FOLLOWING IS COMPLIANT TO THE FLORIDA  
BUILDING CODE 2020, 7TH EDITION AND ASCE 7-16 FOR  
WIND LOADS OF 180 MPH

Digitally signed by Ram  
Goel  
DN:  
E=Soneyfmllc@yahoo.com,  
CN=Ram Goel,  
OU=ENGINEERING,  
O=Soney FM LLC,  
L=Tampa, S=Florida, C=US  
Date: 2021.10.11  
14:16:06 -0400

THIS DRAWING IS AN INSTRUMENT OF SERVICE AND SHALL REMAIN THE PROPERTY OF THE  
ENGINEER, AND SHALL NOT BE REPRODUCED, PUBLISHED OR USED IN ANY WAY WITHOUT  
THE WRITTEN CONSENT OF THE ENGINEER. COPYRIGHT 2021. NOT PUBLISHED.  
THIS IS TO CERTIFY THAT I HAVE REVIEWED THIS PLAN AND FOUND TO BE IN COMPLIANCE  
WITH CHAPTER 16 OF 2020 7TH EDITION FLORIDA BUILDING CODE AND APPLICABLE SUPPLEMENTS.

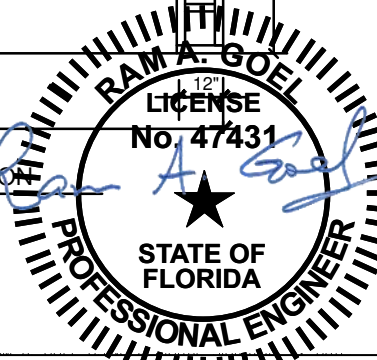
RAM A. GOEL, P.E. # 47431

COPIES OF THESE PLANS ARE NOT VALID UNLESS  
EMBOSSED WITH THE SIGNING ENGINEER'S SEAL



**Ram Goel**  
Digitally signed by Ram Goel  
DN:  
E=Soneyfmllc@yahoo.com,  
CN=Ram Goel,  
OU=ENGINEERING,  
O=Soney FM LLC,  
L=Tampa, S=Florida, C=US  
Date: 2021.10.11  
14:16:23-0400

- NOTE:  
1. THIS ITEM HAS BEEN SIGNED AND SEALED BY  
RAM A. GOEL USING A DIGITAL SIGNATURE & DATE.  
2. PRINTED COPIES OF THIS DOCUMENT ARE NOT  
CONSIDERED SIGNED & SEALED. THIS SIGNATURE MUST  
BE VERIFIED ON ANY ELECTRONIC COPIES.



THE FOLLOWING IS COMPLIANT WITH THE FLORIDA  
BUILDING CODE 2020, 7TH EDITION AND ASCE 7-16 FOR  
WIND LOADS OF 180 MPH

THIS DRAWING IS AN INSTRUMENT OF SERVICE AND SHALL REMAIN THE PROPERTY OF THE  
ENGINEER, AND SHALL NOT BE REPRODUCED, PUBLISHED OR USED IN ANY WAY WITHOUT  
THE WRITTEN CONSENT OF THE ENGINEER. COPYRIGHT 2021. NOT PUBLISHED.  
THIS IS TO CERTIFY THAT I HAVE REVIEWED THIS PLAN AND FOUND IT TO BE IN COMPLIANCE  
WITH CHAPTER 16 OF 2020 7TH EDITION FLORIDA BUILDING CODE AND APPLICABLE SUPPLEMENTS.

RAM A. GOEL, P.E. # 47431  
COPIES OF THESE PLANS ARE NOT VALID UNLESS  
EMBOSSED WITH THE SIGNING ENGINEER'S SEAL



DR. RAM A. GOEL, PH.D., P.E.  
F.P.E. 47431.  
SONEY FM LLC  
CORY LAKE PROFESSIONAL CENTER  
10329 CROSS CREEK BLVD., SUITE P  
TAMPA, FL 33647  
Ph: 727-420-4796  
Fax: (813) 972-2846  
www.soneyfmllc.com

Job # 2173  
Drawn By: S.K.  
Checked By: R.G.

Issue Date: 08-18-21

Revisions:

No.	Date	Description
1		
2		
3		
4		

PREFABRICATED UTILITY STRUCTURE

ELITE METAL MANUFACTURING, LLC  
10121 88TH TRACE  
LIVE OAK, FL 32060

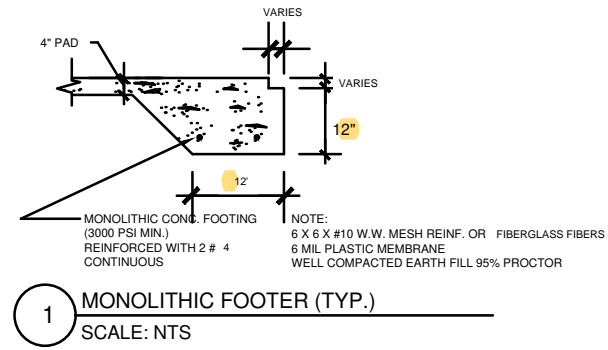
DR. RAM A. GOEL, PH.D., P.E.  
F.P.E. 47431.  
SONEY FM LLC  
CORY LAKE PROFESSIONAL CENTER  
10329 CROSS CREEK BLVD., SUITE P  
TAMPA, FL 33647  
Ph: 727-420-4796  
Fax: (813) 972-2846  
www.soneyfmllc.com

Job # 2173  
Drawn By: S.K.  
Checked By: R.G.

Issue Date: 08-18-21		
Revisions:		
No.	Date	Description
1	11	
2	11	
3	11	
4	11	

CONCRETE

ELITE METAL MANUFACTURING, LLC  
10121 88TH TRACE  
LIVE OAK, FL 32060



CONCRETE:  
CONCRETE SHALL HAVE A MINIMUM COMPRESSIVE STRENGTH OF 3000 PSI AT 28 DAYS.  
COVER OVER REINFORCING STEEL  
FOR FOUNDATIONS, MINIMUM CONCRETE COVER OVER REINFORCING BARS SHALL BE:  
3 INCHES IN FOUNDATIONS WHERE THE CONCRETE IS CAST AGAINST AND  
PREMANENTLY IN CONTACT WITH EARCH OR EXPOSED TO THE EARTH OR WEATHER  
AND 1 1/2" ELSEWHERE. REINFORCING BARS EMBEDDED IN GROUTED CELLS SHALL HAVE  
A MINIMUM CLEAR DISTANCE OF 1/4" FOR FINE GROUT OR 1/2" FOR COURSE GROUT  
BETWEEN REINFORCING BARS AND ANY FACE OF A CELL. REINFORCING BARS USED IN  
MASONRY WALLS SHALL HAVE A MASONRY COVER (INCLUDING GROUT) OF NOT LESS THAN  
2" FOR MASONRY UNITS WITH FACE EXPOSED TO EARTH OR WEATHER 1 1/2" FOR MASONRY  
UNITS NOT EXPOSED TO EARCH OR WEATHER.

REINFORCING STEEL:  
THE REINFORCING STEEL SHALL BE MINIMUM GRADE 40.

GALVANIZATION:  
METAL ACCESSORIES FOR USE IN EXTERIOR WALL CONSTRUCTION NOT DIRECTLY EXPOSED TO  
THE WEATHER SHALL BE GALVANIZED IN ACCORDANCE WITH ASTM A 153, CLASS B-2. METAL  
PLATE CONNECTORS, SCREWS, BOLTS AND NAILS EXPOSED DIRECTLY TO THE WEATHER SHALL BE  
IN STAINLESS STEEL OR HOT DIPPED GALVANIZED.

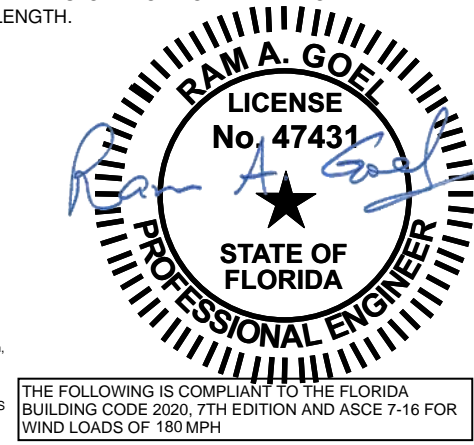
REINFORCEMENT MAY BE BENT IN THE SHOP OR THE FIELD PROVIDED:

1. ALL REINFORCEMENT IS BENT COLD
2. THE DIAMETER OF THE BEND, MEASURED ON THE INSIDE OF THE BAR, IS NOT LESS THAN 6-BAR  
DIAMETERS AND
3. REINFORCEMENT PARTIALLY EMBEDDED IN CONCRETE SHALL NOT BE FIELD BENT.

EXCEPTION: WHERE BENDING IS NECESSARY TO ALIGN BARS WITH A VERTICAL CELL, BARS PARTIAL  
EMBEDDED IN CONCRETE SHALL BE PERMITTED TO BE BENT AT A SLOPE NOT MORE THAN 1" OF  
THE HORIZONTAL DISPLACEMENT TO 6" OF VERTICAL BAR LENGTH.

**Ram Goel**

Digitally signed by Ram  
Goel  
DN:  
E=Soneyfmllc@yahoo.com,  
CN=Ram Goel,  
OU=ENGINEERING,  
O=Soney FM LLC,  
L=Tampa, S=Florida, C=US  
Date: 2021.10.11  
14:16:36-0400



THE FOLLOWING IS COMPLIANT TO THE FLORIDA  
BUILDING CODE 2020, 7TH EDITION AND ASCE 7-16 FOR  
WIND LOADS OF 180 MPH

NOTE:  
1. THIS ITEM HAS BEEN SIGNED AND SEALED BY  
RAM A. GOEL USING A DIGITAL SIGNATURE & DATE.  
2. PRINTED COPIES OF THIS DOCUMENT ARE NOT  
CONSIDERED SIGNED & SEALED. THIS SIGNATURE MUST  
BE VERIFIED ON ANY ELECTRONIC COPIES.

THIS DRAWING IS AN INSTRUMENT OF SERVICE AND SHALL REMAIN THE PROPERTY OF THE  
ENGINEER, AND SHALL NOT BE REPRODUCED, PUBLISHED OR USED IN ANY WAY WITHOUT  
THE WRITTEN CONSENT OF THE ENGINEER. COPYRIGHT 2021. NOT PUBLISHED  
THIS IS TO CERTIFY THAT I HAVE REVIEWED THIS PLAN AND FOUND TO BE IN COMPLIANCE  
WITH CHAPTER 16 OF 2020 7TH EDITION FLORIDA BUILDING CODE AND APPLICABLE SUPPLEMENTS.

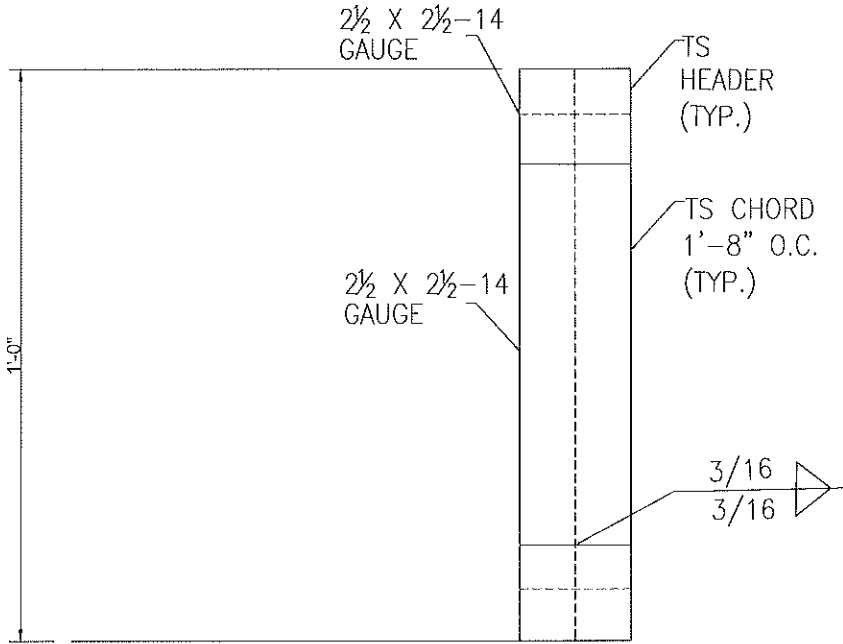
RAM A. GOEL, P.E. # 47431

COPIES OF THESE PLANS ARE NOT VALID UNLESS  
EMBOSSD WITH THE SIGNING ENGINEER'S SEAL

4" CONC. SLAB  
6 X 6 #10 W.W. MESH REINF. -  
FIBERMESH OPTIONAL  
6 MIL PLASTIC MEMBRANE  
WELL COMPACTED EARTH FILL 95% PROCTOR  
TREAT SOIL FOR TERMITES

1  
6 of 6

OPTIONAL HEADER



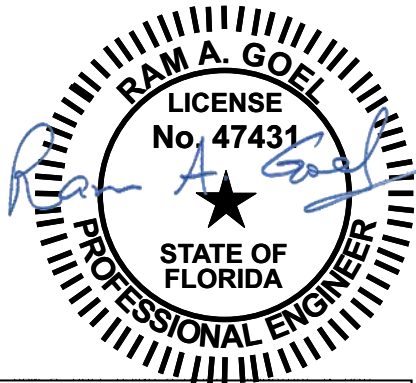
HEADER DETAIL FOR DOOR  
OPENINGS 12'-0" < LENGTH < 20'-0"  
SCALE: N.T.S.



DR. RAM A. GOEL, PH.D., P.E.  
F.P.E. 47431.  
SONEY FM LLC  
CORY LAKE PROFESSIONAL CENTER  
10329 CROSS CREEK BLVD., SUITE P  
TAMPA, FL 33647  
Ph: 727-420-4796  
Fax: (813) 972-2846  
www.soneyfmllc.com

Job # 2173  
Drawn By: S.K.  
Checked By: R.G.

Issue Date: 08-18-21		
Revisions:		
No.	Date	Description
1	11	
2	11	
3	11	
4	11	



THE FOLLOWING IS COMPLIANT TO THE FLORIDA  
BUILDING CODE 2020, 7TH EDITION AND ASCE 7-16 FOR  
WIND LOADS OF 180 MPH

- NOTE:
1. THIS ITEM HAS BEEN SIGNED AND SEALED BY  
RAM A. GOEL USING A DIGITAL SIGNATURE & DATE.
  2. PRINTED COPIES OF THIS DOCUMENT ARE NOT  
CONSIDERED SIGNED & SEALED. THIS SIGNATURE MUST  
BE VERIFIED ON ANY ELECTRONIC COPIES.

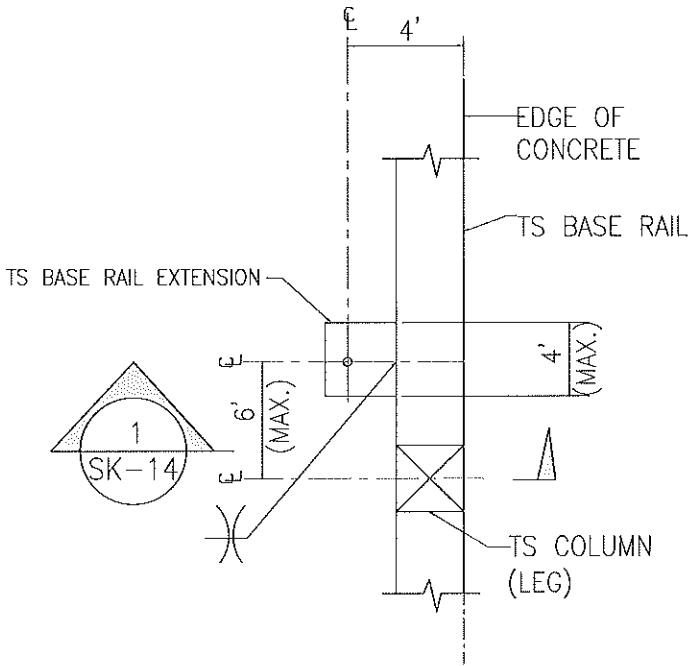
Ram Goel  
Digitally signed by Ram Goel  
DN:  
E=sonyfmllc@yahoo.com,  
OU=Ram Goel,  
OU=ENGINEERING,  
O=sony fm llc,  
L=Tampa, S=Florida, C=US  
Date: 2021.10.11  
14:16:54-04'00'

THIS DRAWING IS AN INSTRUMENT OF SERVICE AND SHALL REMAIN THE PROPERTY OF THE  
ENGINEER, AND SHALL NOT BE REPRODUCED, PUBLISHED OR USED IN ANY WAY WITHOUT  
THE WRITTEN CONSENT OF THE ENGINEER. COPYRIGHT 2021. NOT PUBLISHED.  
THIS IS TO CERTIFY THAT I HAVE REVIEWED THIS PLAN AND FOUND IT TO BE IN COMPLIANCE  
WITH CHAPTER 16 OF 2020 FRI EDITION FLORIDA BUILDING CODE AND APPLICABLE SUPPLEMENTS  
Dr. Ram A. Goel PE # 47431  
COPIES OF THESE PLANS ARE NOT VALID UNLESS  
EMBOSSED WITH THE SIGNING ENGINEER'S SEAL

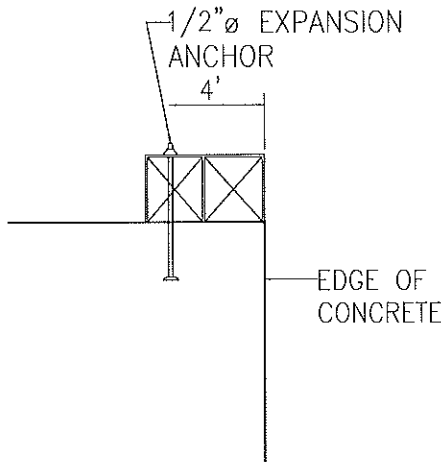
OPTIONAL HEADER  
ELITE METAL MANUFACTURING, LLC  
10121 88TH TRACE  
LIVE OAK, FL 32060



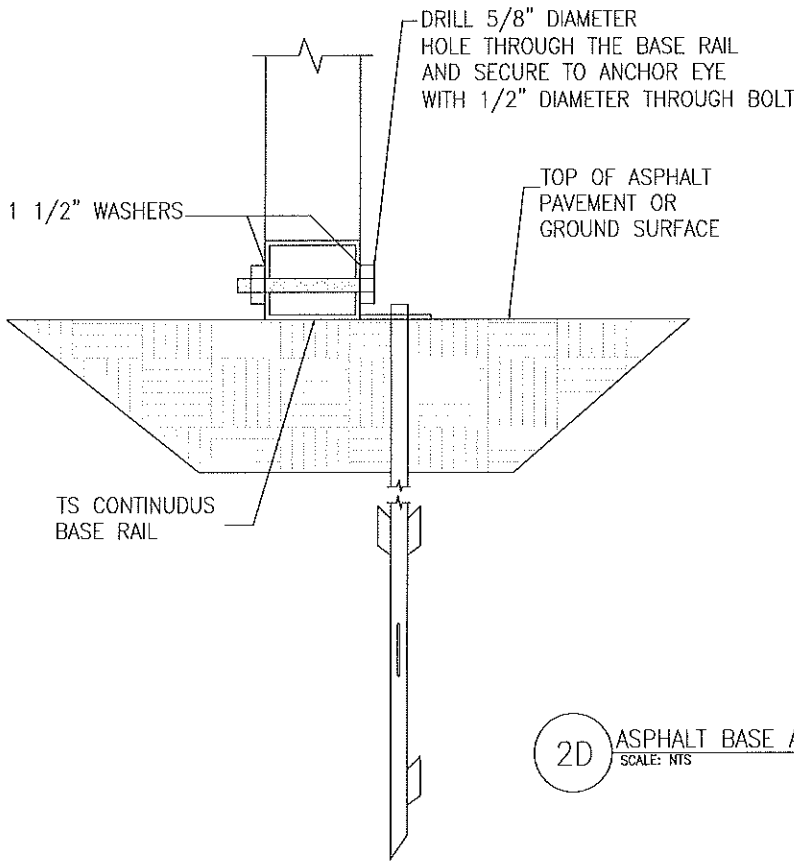
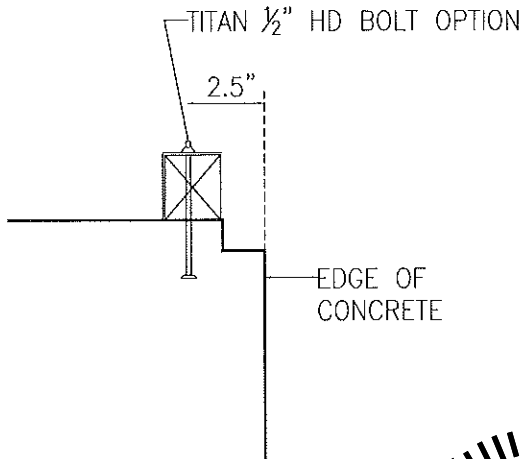
ADDITIONAL BASE RAIL ANCHORAGE OPTION



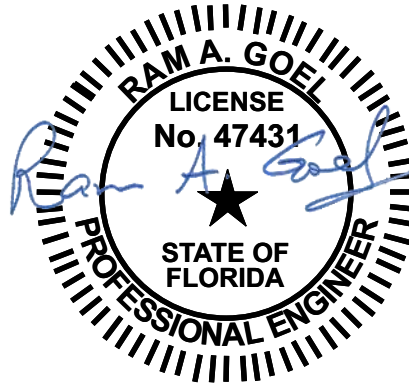
TYPICAL ANCHOR DETAIL WHEN  
BASE RAIL IS NEAR EDGE OF CONCRETE  
SCALE: N.T.S.



SECTION 1  
SCALE: N.T.S. SK-14



2D ASPHALT BASE ANCHORAGE  
SCALE: N.T.S.



THE FOLLOWING IS COMPLIANT TO THE FLORIDA  
BUILDING CODE 2020, 7TH EDITION AND ASCE 7-16 FOR  
WIND LOADS OF 180 MPH

- NOTE:
1. THIS ITEM HAS BEEN SIGNED AND SEALED BY  
RAM A. GOEL USING A DIGITAL SIGNATURE & DATE.
  2. PRINTED COPIES OF THIS DOCUMENT ARE NOT  
CONSIDERED SIGNED & SEALED. THIS SIGNATURE MUST  
BE VERIFIED ON ANY ELECTRONIC COPIES.

Digitally signed by Ram Goel  
DN:  
E=Soneyfmllc@yahoo.com,  
CN=Ram Goel,  
OU=ENGINEERING,  
O=Soney FM LLC,  
L=Tampa, S=Florida, C=US  
Date: 2021.10.11  
14:17:09-04'00'

THIS DRAWING IS AN INSTRUMENT OF SERVICE AND SHALL REMAIN THE PROPERTY OF THE  
ENGINEER. AND SHALL NOT BE REPRODUCED, PUBLISHED OR USED IN ANY WAY WITHOUT  
THE WRITTEN CONSENT OF THE ENGINEER. COPYRIGHT 2021. NOT PUBLISHED  
THIS IS TO CERTIFY THAT I HAVE REVIEWED THIS PLAN AND FOUND IT TO BE IN COMPLIANCE  
WITH CHAPTER 16 OF 2020 7TH EDITION FLORIDA BUILDING CODE AND APPLICABLE SUPPLEMENTS.

Dr. Ram A. Goel PE # 47431

COPIES OF THESE PLANS ARE NOT VALID UNLESS  
EMBOSSED WITH THE SIGNING ENGINEER'S SEAL.



DR. RAM A. GOEL, PH.D., P.E.  
F.P.E. 47431.  
SONEY FM LLC  
CORY LAKE PROFESSIONAL CENTER  
10329 CROSS CREEK BLVD., SUITE P  
TAMPA, FL 33647  
Ph: 727-420-4796  
Fax: (813) 972-2846  
www.soneyfmllc.com

Job # 2173  
Drawn By: S.K.  
Checked By: R.G.

Issue Date: 08-18-21		
Revisions:		
No.	Date	Description
1		
2		
3		
4		

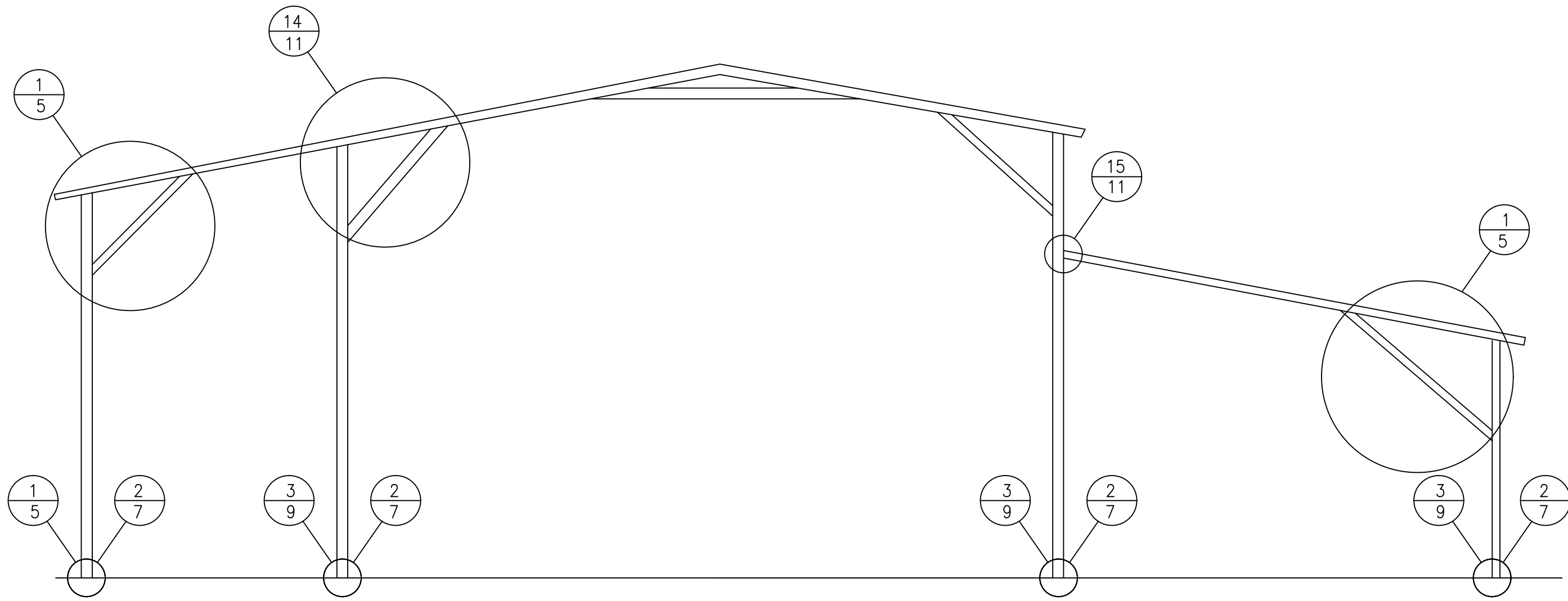
ADDITIONAL BASE RAIL ANCHORAGE OPTION

ELITE METAL MANUFACTURING, LLC  
10121 88TH TRACE  
LIVE OAK, FL 32060

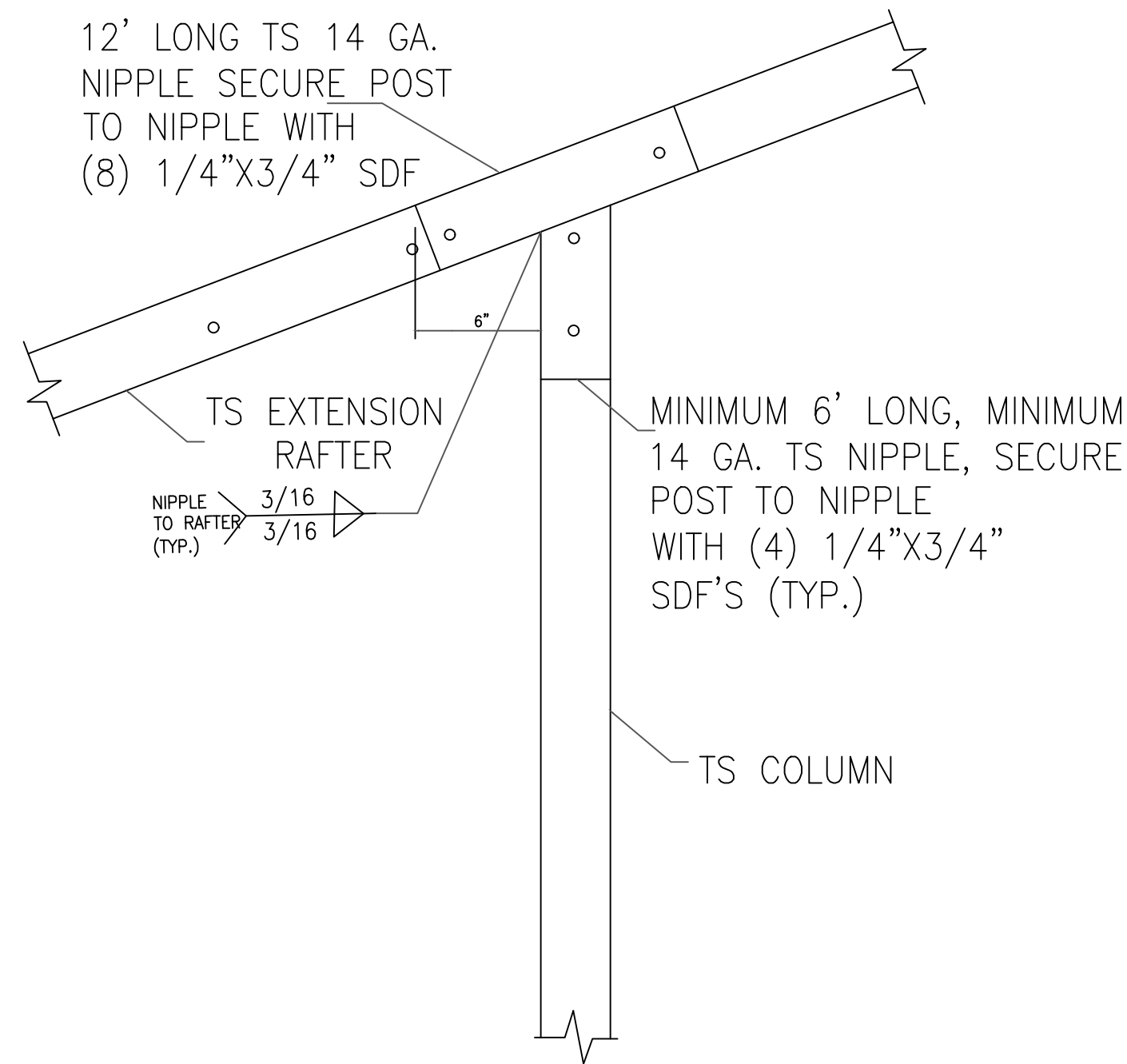
8



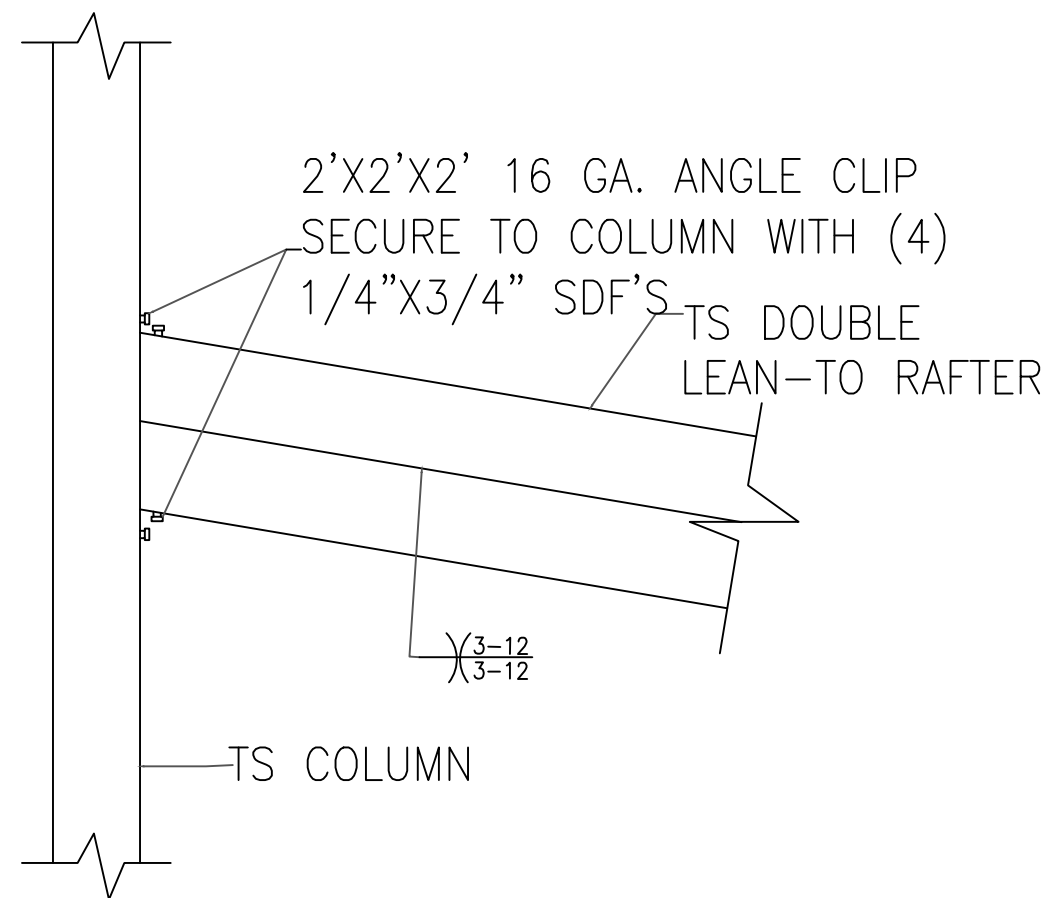
BOX EAVE RAFTER LEAN-TO OPTIONS



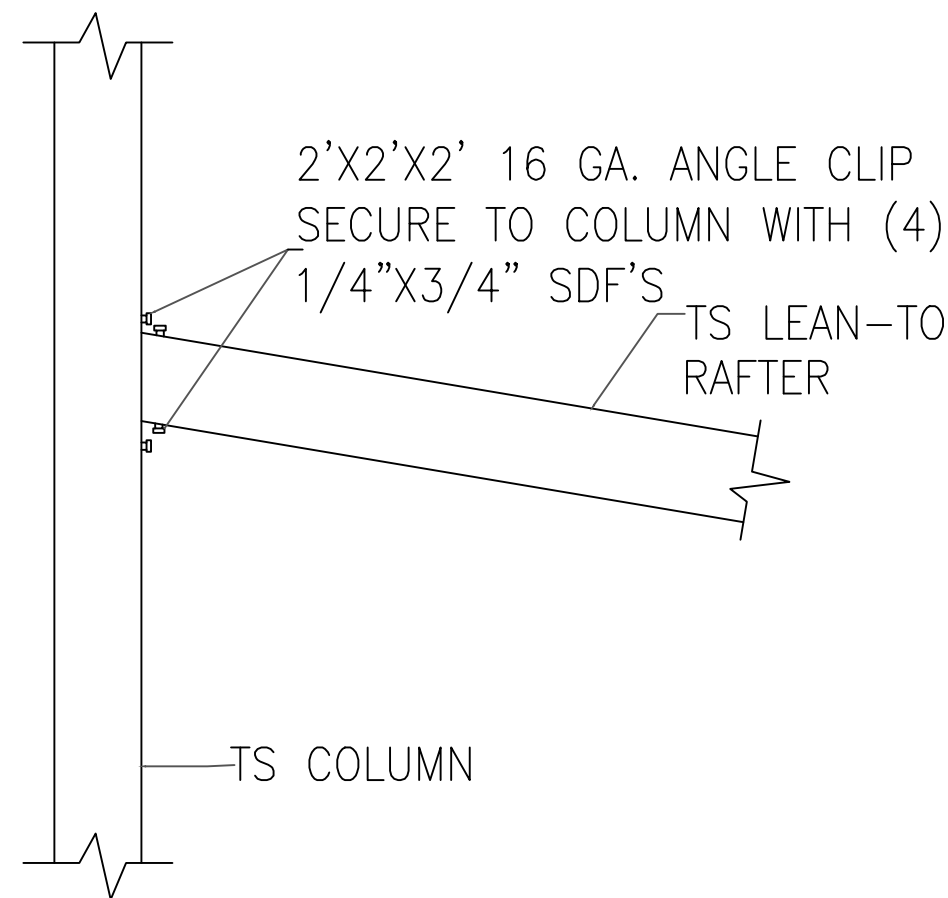
TYPICAL BOX EAVE RAFTER LEAN-TO OPTIONS FRAMING SECTION (BOTH OPTIONS SHOWN)  
SCALE: NTS



14 SIDE EXTENSION RAFTER/  
CORNER POST DETAIL  
SCALE: NTS



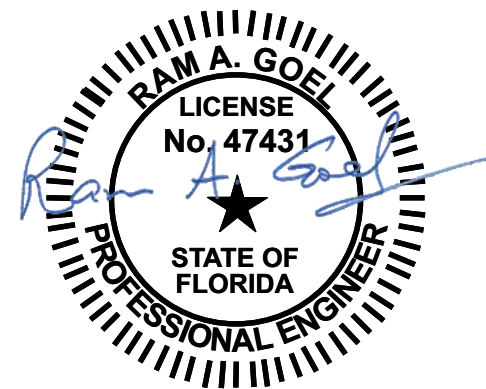
15A LEAN-TO RAFTER TO  
RAFTER POST CONNECTION  
DETAIL FOR WIDTHS  
12'-0" < TO ≤ 16'-0"  
SCALE: NTS



15B LEAN-TO RAFTER TO  
RAFTER POST CONNECTION  
DETAIL FOR WIDTHS ≤ 12'-0"  
SCALE: NTS

Ram Goel

Digitally signed by Ram Goel  
DN:  
E=Soneyfmllc@yahoo.com,  
CN=Ram Goel,  
OU=ENGINEERING,  
O=Soney FM LLC,  
L=Tampa, St=Florida, C=US  
Date: 2021.10.11  
14:17:28-04'00'



NOTE:  
1. THIS ITEM HAS BEEN SIGNED AND SEALED BY  
RAM A. GOEL USING A DIGITAL SIGNATURE & DATE.  
2. PRINTED COPIES OF THIS DOCUMENT ARE NOT  
CONSIDERED SIGNED & SEALED. THIS SIGNATURE MUST  
BE VERIFIED ON ANY ELECTRONIC COPIES.

THIS DRAWING IS AN INSTRUMENT OF SERVICE AND SHALL REMAIN THE PROPERTY OF THE  
ENGINEER, AND SHALL NOT BE REPRODUCED, PUBLISHED OR USED IN ANY WAY WITHOUT  
THE WRITTEN CONSENT OF THE ENGINEER. COPYRIGHT 2021. NOT PUBLISHED  
THIS IS TO CERTIFY THAT I HAVE REVIEWED THIS PLAN AND FOUND TO BE IN COMPLIANCE  
WITH CHAPTER 16 OF 2020 7TH EDITION FLORIDA BUILDING CODE AND APPLICABLE SUPPLEMENTS.  
Dr. Ram A. Goel PE # 47431  
COPIES OF THESE PLANS ARE NOT VALID UNLESS  
EMBOSSED WITH THE SIGNING ENGINEER'S SEAL



Richard G. Marceau, P.E. # 64466  
PH: 813-388-6090  
SONEY FM LLC  
CORY LAKE PROFESSIONAL CENTER  
10329 CROSS CREEK BLVD., SUITE P  
TAMPA, FL 33647  
www.soneyfmllc.com

Job #2173

Drawn By: K.D.

Checked By: S.G.

Issue Date: 08-18-21

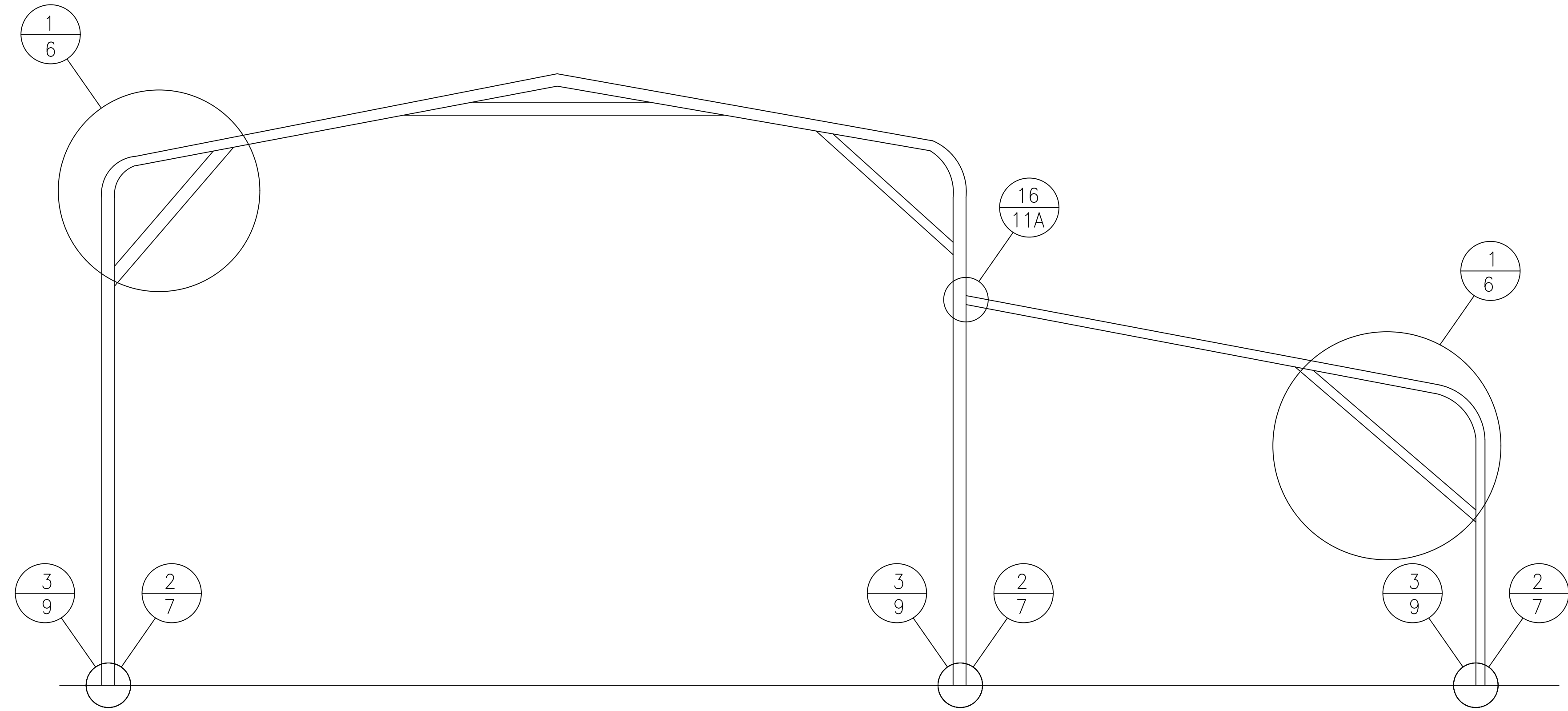
Revisions:		
No.	Date	Description
Δ	//	
Δ	//	
Δ	//	
Δ	//	

BOX EAVE RAFTER LEAN-TO OPTIONS

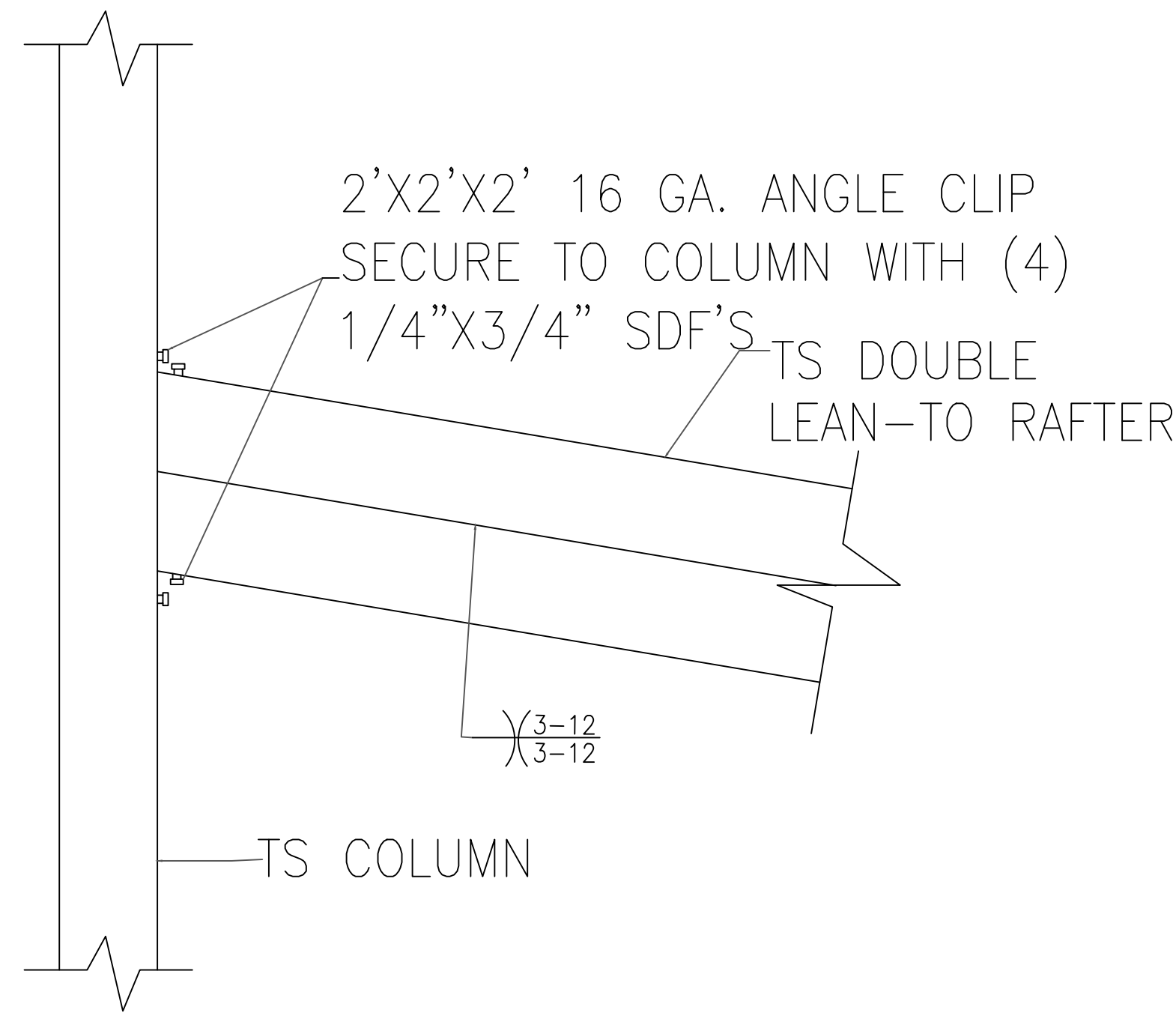
ELITE METAL MANUFACTURING, LLC  
10121 88TH TRACE  
LIVE OAK, FL 32060

9

BOX EAVE RAFTER LEAN-TO OPTIONS

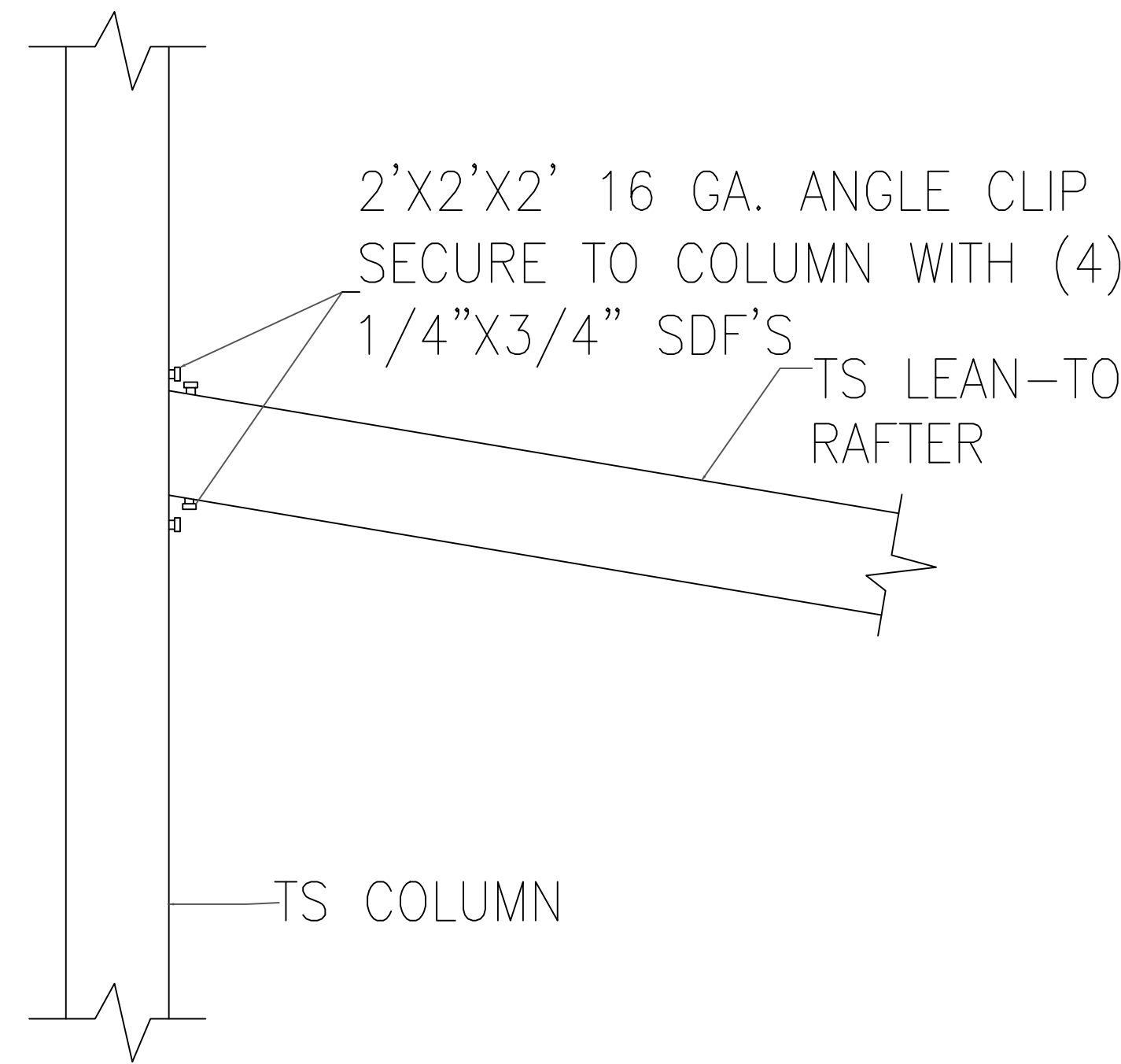


TYPICAL BOX EAVE RAFTER LEAN-TO OPTIONS FRAMING SECTION  
SCALE: NTS



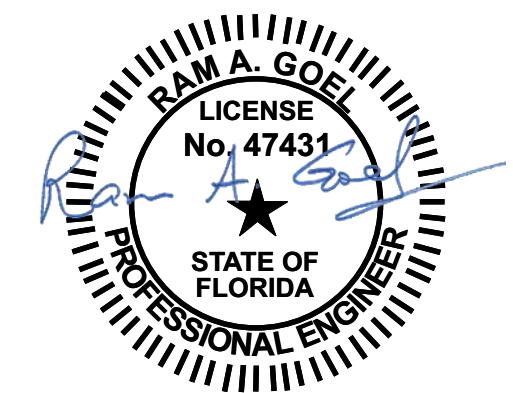
LEAN-TO RAFTER TO  
RAFTER POST CONNECTION  
DETAIL FOR WIDTHS  
12'-0" < TO ≤ 16'-0"  
SCALE: NTS

16A



LEAN-TO RAFTER TO  
RAFTER POST CONNECTION  
DETAIL FOR WIDTHS ≤12'-0"  
SCALE: NTS

16B



NOTE:  
1. THIS ITEM HAS BEEN SIGNED AND SEALED BY  
RAM A. GOEL USING A DIGITAL SIGNATURE & DATE.  
2. PRINTED COPIES OF THIS DOCUMENT ARE NOT  
CONSIDERED SIGNED & SEALED. THIS SIGNATURE MUST  
BE VERIFIED ON ANY ELECTRONIC COPIES.

Digitally signed by Ram  
Goel  
DN:  
E=Soneyfmllc@yahoo.com,  
CN=Ram Goel,  
OU=ENGINEERING,  
O=Soney FM LLC,  
L=Tampa, S=Florida, C=US  
Date: 2021.10.11  
14:17:44-04'00'

Ram Goel

THIS DRAWING IS AN INSTRUMENT OF SERVICE AND SHALL REMAIN THE PROPERTY OF THE  
ENGINEER, AND SHALL NOT BE REPRODUCED, PUBLISHED OR USED IN ANY WAY WITHOUT  
THE WRITTEN CONSENT OF THE ENGINEER. COPYRIGHT 2021. NOT PUBLISHED  
THIS IS TO CERTIFY THAT I HAVE REVIEWED THIS PLAN AND FOUND TO BE IN COMPLIANCE  
WITH CHAPTER 16 OF 2020 7TH EDITION FLORIDA BUILDING CODE AND APPLICABLE SUPPLEMENTS.

Dr. Ram A. Goel PE # 47431

COPIES OF THESE PLANS ARE NOT VALID UNLESS  
EMBOSSED WITH THE SIGNING ENGINEER'S SEAL



Richard G. Marceau, P.E. # 64466  
PH: 813-388-6090  
SONEY FM LLC  
CORY LAKE PROFESSIONAL CENTER  
10329 CROSS CREEK BLVD., SUITE P  
TAMPA, FL 33647  
www.soneyfmllc.com

Job #2173

Drawn By: K.D.

Checked By: S.G.

Issue Date: 08-18-21

Revisions:		
No.	Date	Description
Δ	//	
Δ	//	
Δ	//	
Δ	//	

BOX EAVE RAFTER LEAN-TO OPTIONS

ELITE METAL MANUFACTURING, LLC  
10121 88TH TRACE  
LIVE OAK, FL 32060

10