



VERIZON SITE NUMBER: 9066145
VERIZON SITE NAME:
SITE TYPE:
TOWER HEIGHT:

BUSINESS UNIT #: 824653
SITE ADDRESS:
CITY:
COUNTY:
JURISDICTION:

VERIZON SUB 6-GHZ

SITE INFORMATION

CROWN CASTLE USA INC.
SITE ADDRESS:
COUNTY:
MAP/PARCEL #:
AREA OF CONSTRUCTION:
LATITUDE:
LONGITUDE:
LAT/LONG TYPE:
GROUND ELEVATION:
CURRENT ZONING:
JURISDICTION:
OCCUPANCY CLASSIFICATION:
TYPE OF CONSTRUCTION:
A.D.A. COMPLIANCE:
PROPERTY OWNER:
TOWER OWNER:
CARRIER/APPLICANT:
ELECTRIC PROVIDER:
TELCO PROVIDER:

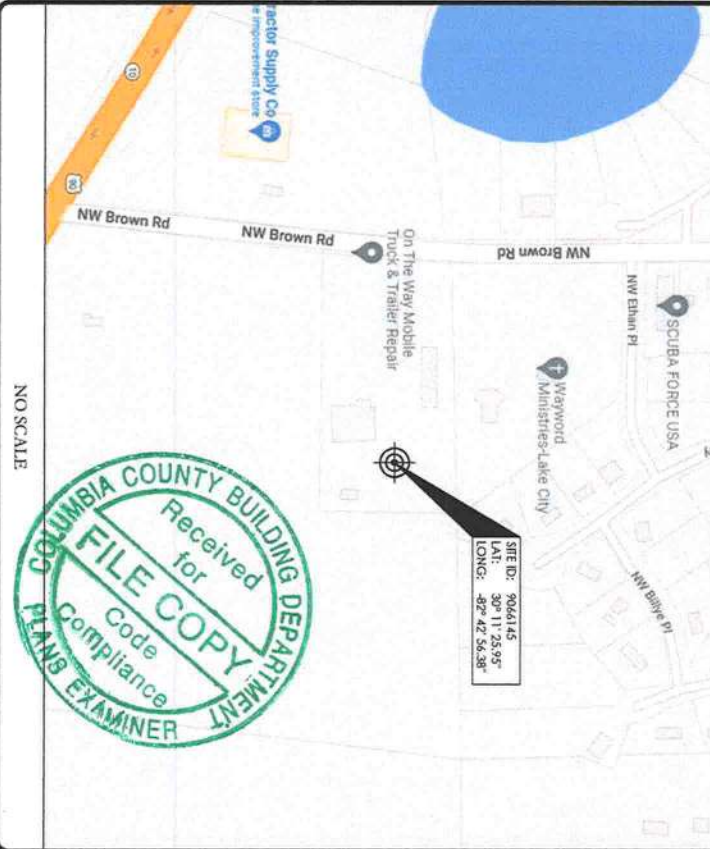
DRAWING INDEX

SHEET #	SHEET DESCRIPTION
T-1	TITLE SHEET
T-2	GENERAL NOTES
C-1.1	SITE PLAN
C-1.2	EQUIPMENT PLAN
C-2	TOWER ELEVATION & ANTENNA PLANS
C-3	EQUIPMENT SCHEDULE
C-4	EQUIPMENT SPECS
C-5	EQUIPMENT SPECS
G-1	GROUNDING DETAILS
G-2	GROUNDING DETAILS

PROJECT DESCRIPTION

THE PURPOSE OF THIS PROJECT IS TO ENHANCE BROADBAND CONNECTIVITY AND CAPACITY TO THE EXISTING ELIGIBLE WIRELESS FACILITY.
TOWER SCOPE OF WORK
• INSTALL (3) ANTENNAS
NOTE
• INSTALL (1) SUPPORT RAIL KIT
GROUND SCOPE OF WORK
• NONE

LOCATION MAP



APPLICABLE CODES/REFERENCE DOCUMENTS

ALL WORK SHALL BE PERFORMED AND MATERIALS INSTALLED IN ACCORDANCE WITH THE CURRENT EDITIONS OF THE FOLLOWING CODES AS ADOPTED BY THE LOCAL GOVERNING AUTHORITIES. NOTHING IN THESE PLANS IS TO BE CONSTRUED TO PERMIT WORK NOT CONFORMING TO THESE CODES:
CODE TYPE CODE
BUILDING 2020 FLORIDA BUILDING CODE, 7th EDITION
MECHANICAL 2018 IMC
ELECTRICAL 2017 NEC
ANALYSIS CRITERIA:
APPLICABLE CODES: TIA-222-H / ASCE 7-16
WIND SPEED: V = 118 MPH (ULTIMATE 3 SECOND GUST)
EXPOSURE CATEGORY: C
RISK CATEGORY: II
TOPOGRAPHIC CATEGORY: I
CREST HEIGHT: 0
K_z= 1.0
SEISMIC RESPONSE: NA

PROJECT TEAM

AKKE FIRM:
CROWN CASTLE USA INC.
2000 CORPORATE DRIVE
CANONSBURG, PA 15317
CROWNNAE.APPROVAL@CROWNCastle.COM
8000 AVALON BLVD, SUITE 700
ALPHARETTA, GA 30009
DEREK SMITH - PROJECT MANAGER
(561) 544-4972

CONTRACTOR PMI REQUIREMENTS

PMI ACCESSED AT
SMART TOOL VENDOR
PROJECT NUMBER
VZW LOCATION CODE (PISC)
https://pmi.vzwsmart.com
10097866
9066145

MOUNT MODIFICATION REQUIRED

Y

VZW APPROVED SMART KIT VENDORS

REFER TO MOUNT MODIFICATION DRAWINGS PAGE FOR
VZW SMART KIT APPROVED VENDORS



7701 EAST TELECOM PARKWAY WING A-1
TEMPLE TERRACE, FL 33637



8000 AVALON BLVD, SUITE 700
ALPHARETTA, GA 30009



1355 WINDWARD CONCOURSE
SUITE 410
ALPHARETTA, GA 30005
TEL: 678-990-2338

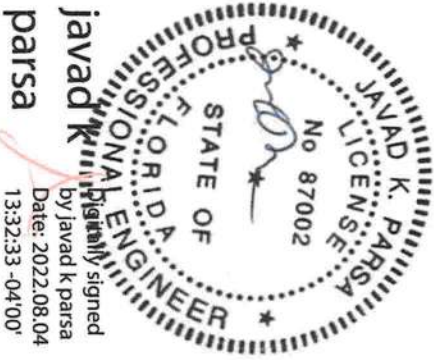
VERIZON SITE NUMBER:
9066145

BU #: 824653
HWY 90 AT NW BROWN RD
297 NW BROWN ROAD
LAKE CITY, FL 32055

EXISTING 198'-0" MONOPOLE

ISSUED FOR:

REV	DATE	DRAWN	DESCRIPTION	DWG./QTY
0	08/09/22	RS	FINAL	SH



by Javad K. Parsa
Date: 2022.08.04
13:32:33 -04'00'

THIS ITEM HAS BEEN DIGITALLY SIGNED AND SEALED BY JAVAD K. PARSA, P.E. ON THE DATE ADJACENT TO THE SEAL. PRINTED COPIES OF THIS DOCUMENT ARE NOT CONSIDERED SIGNED AND SEALED AND THE SIGNATURE MUST BE VERIFIED ON ANY ELECTRONIC COPIES.
IT IS A VIOLATION OF LAW FOR ANY PERSON, UNLESS THEY ARE A LICENSED PROFESSIONAL ENGINEER, TO ALTER THIS DOCUMENT.

SHEET NUMBER: REVISION:

T-1 0

CALL FLORIDA ONE CALL
(800) 432-4770
CALL 3 WORKING DAYS
BEFORE YOU DIG!



verizon
7701 EAST TELECOM PARKWAY WING A-1
TEMPLE TERRACE, FL 33637

CROWN CASTLE
8000 AVAION BLVD, SUITE 700
ALPHARETTA, GA 30009

towersource
A NextEdge Company
1355 WINDWARD CONCOURSE
SUITE 410
ALPHARETTA, GA 30005
TEL: 678-990-2338

VERIZON SITE NUMBER:
9066145

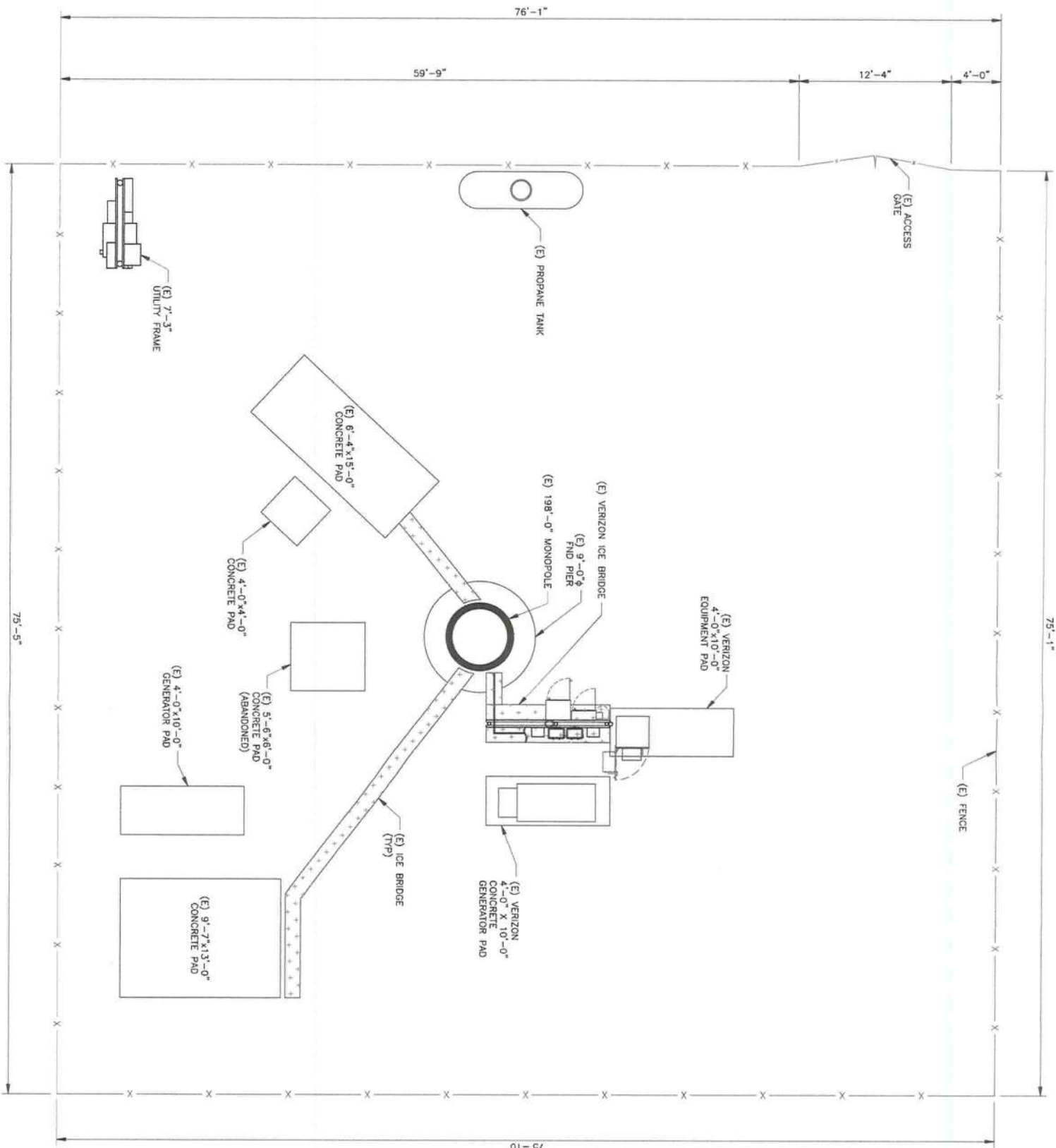
BU #: 824653
HWY 90 AT NW BROWN RD
297 NW BROWN ROAD
LAKE CITY, FL 32055
EXISTING 198'-0" MONOPOLE

ISSUED FOR:				
REV	DATE	DRWN	DESCRIPTION	DES/QA
0	08/04/23	RS	FINAL	SH



THIS ITEM HAS BEEN DIGITALLY SIGNED AND SEALED BY
JAVAD K. PARSY, P.E. ON THE DATE ADJACENT TO THE SEAL.
PRINTED COPIES OF THIS DOCUMENT ARE NOT CONSIDERED
SIGNED AND SEALED AND THE SIGNATURE MUST BE
VERIFIED ON ANY ELECTRONIC COPIES.
IT IS A VIOLATION OF LAW FOR ANY PERSON,
UNLESS THEY ARE A LICENSED PROFESSIONAL ENGINEER,
TO ALTER THIS DOCUMENT.

SHEET NUMBER: C-1.1
REVISION: 0



1 SITE PLAN
SCALE: 3/16"=1'-0" (FULL SIZE)
3/32"=1'-0" (1:12)



verizon
7701 EAST TELECOM PARKWAY WING A-1
TEMPLE TERRACE, FL 33637

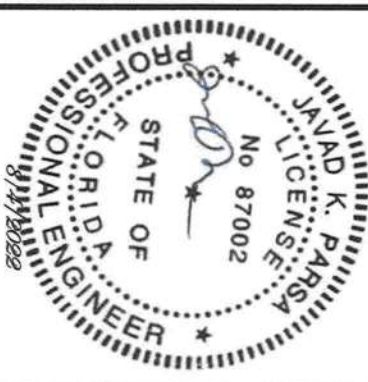
CROWN CASTLE
8000 AVALON BLVD, SUITE 700
ALPHARETTA, GA 30009

towersource
A NextEra Company
1355 WINDWARD CONCOURSE
SUITE 410
ALPHARETTA, GA 30005
TEL: 678-990-2338

VERIZON SITE NUMBER:
9066145

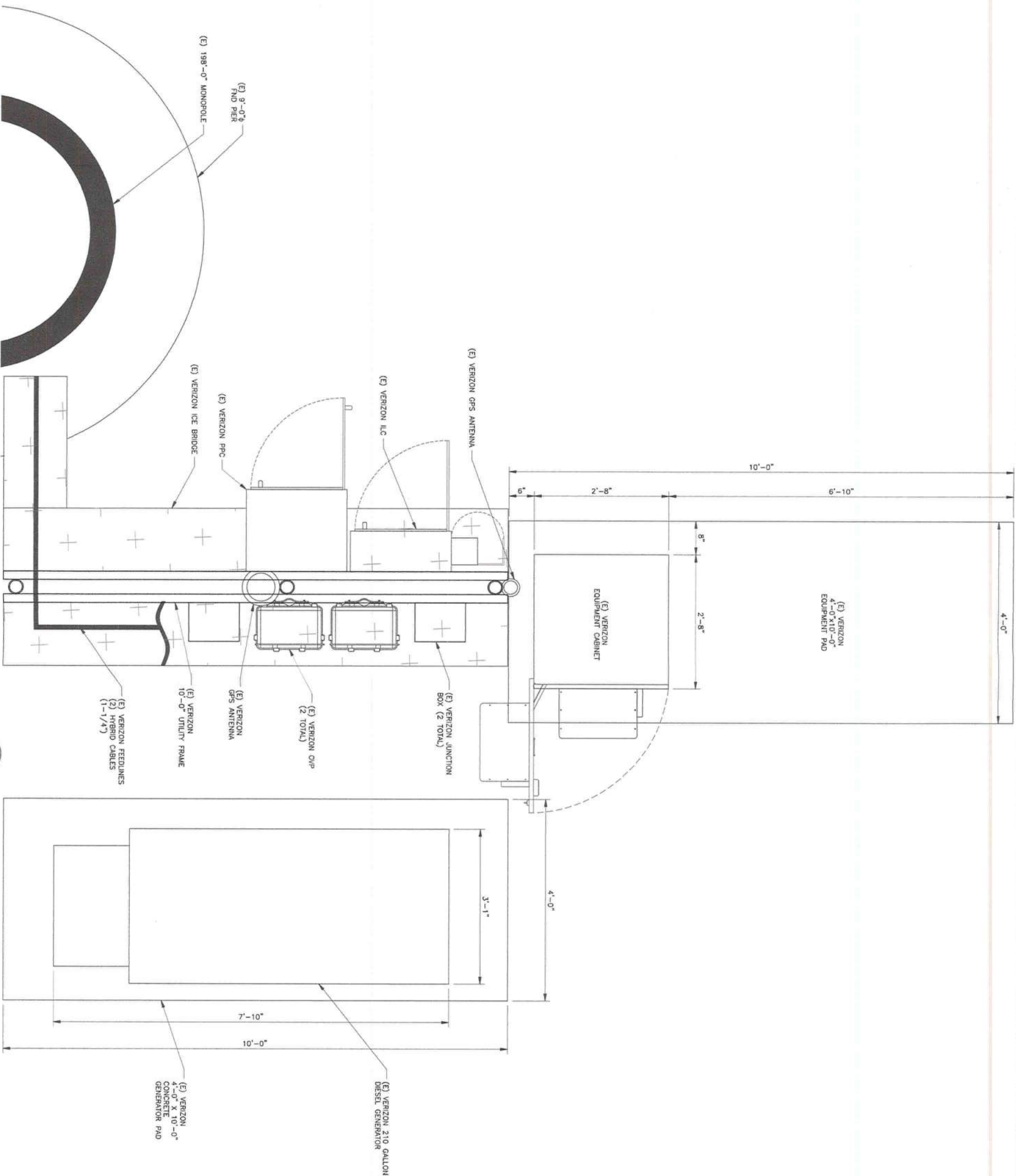
BU #: 824653
HWY 90 AT NW BROWN RD
297 NW BROWN ROAD
LAKE CITY, FL 32055
EXISTING 198'-0" MONOPOLE

ISSUED FOR:				
REV	DATE	DRAWN	DESCRIPTION	DWG./QTY
0	(8/04/23	PS	FINAL	SH



THIS ITEM HAS BEEN DIGITALLY SIGNED AND SEALED BY JAVAD K. PARSA, P.E. ON THE DATE ADJACENT TO THE SEAL. PRINTED COPIES OF THIS DOCUMENT ARE NOT CONSIDERED VALID UNLESS THEY ARE SIGNED AND SEALED BY THE SIGNATURE MUST BE VERIFIED ON ANY ELECTRONIC COPIES. ANY PERSON USING THIS DOCUMENT WITHOUT THE SIGNATURE OF A LICENSED PROFESSIONAL ENGINEER, OR ALTER THIS DOCUMENT.

SHEET NUMBER: C-1.2
REVISION: 0

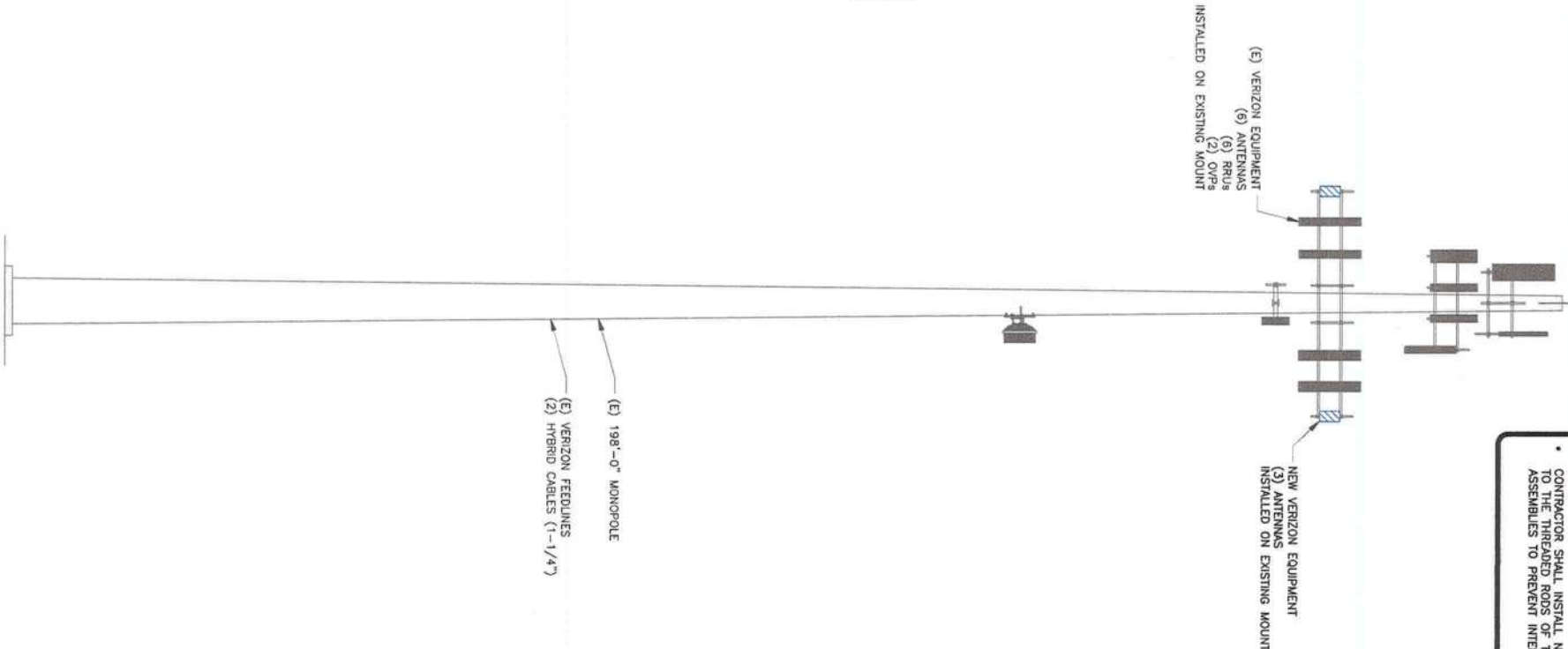


1 EQUIPMENT PLAN
SCALE: 1"=1'-0" (FULL SIZE)
1/2"=1'-0" (11x17)



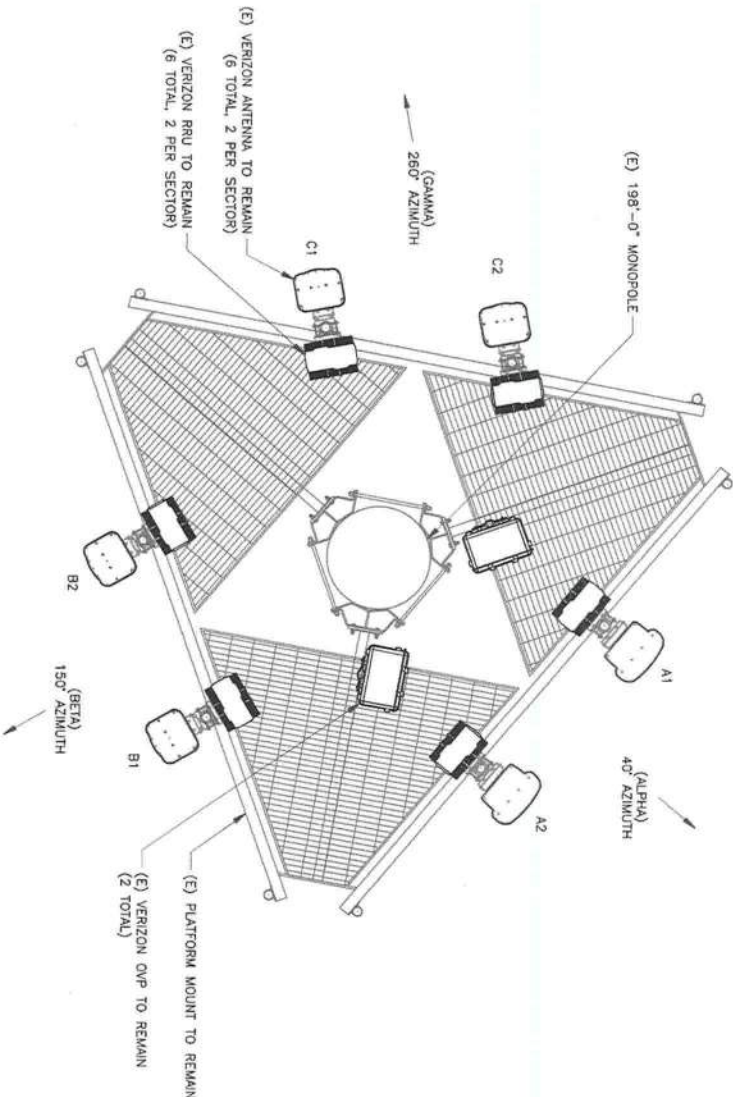
SPECIAL INSTRUCTIONS:

- CONTRACTOR SHALL INSTALL NEW SAFETY CLIMB WIRE ROPE GUIDES TO THE THREADED ROOS OF THE EXISTING MOUNT CLAMP ASSEMBLIES TO PREVENT INTERFERENCE WITH MOUNT CONNECTION.

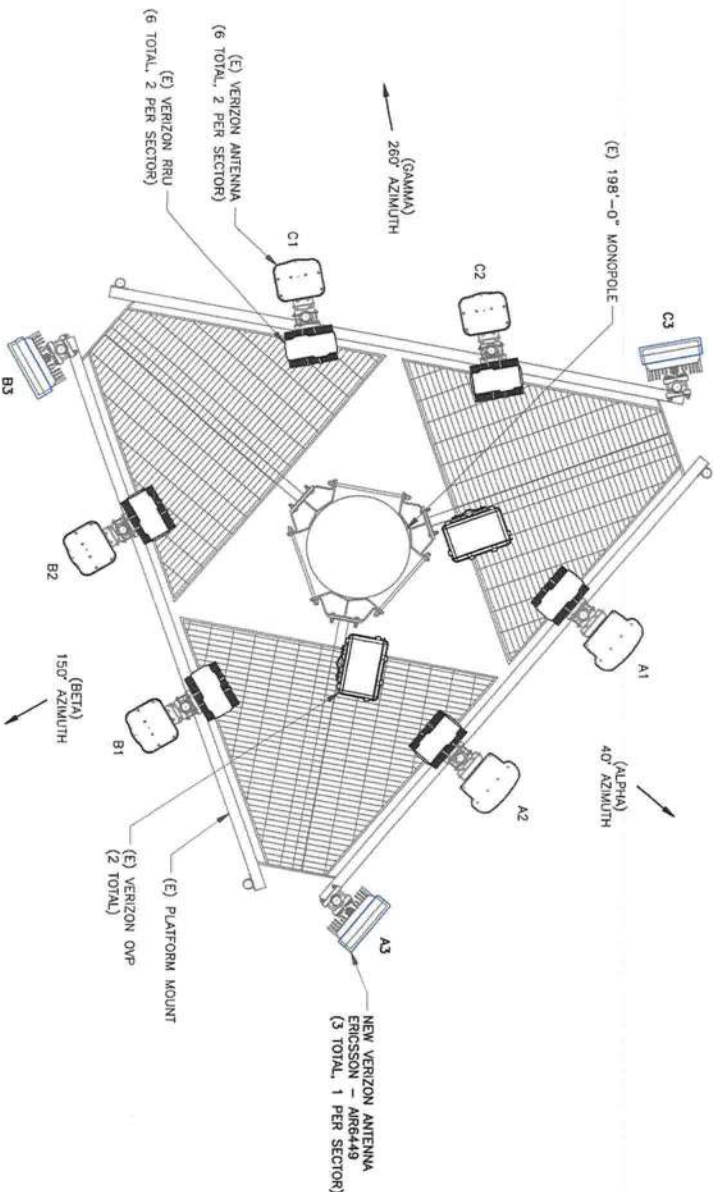


NOTES:

- INSTALL (1) SUPPORT RAIL KIT



2 EXISTING ANTENNA PLAN
SCALE: NOT TO SCALE



3 NEW ANTENNA PLAN
SCALE: NOT TO SCALE

verizon
7701 EAST TELECOM PARKWAY WING A-1
TEMPLE TERRACE, FL 33637

CROWN CASTLE
8000 AVALON BLVD, SUITE 700
ALPHARETTA, GA 30009

towersource
A NextEdge Company
1355 WINDWARD CONCOURSE
SUITE 410
ALPHARETTA, GA 30005
TEL: 678-990-2338

VERIZON SITE NUMBER:
9066145
BU #: 824653
HWY 90 AT NW BROWN RD
297 NW BROWN ROAD
LAKE CITY, FL 32055
EXISTING 198'-0" MONOPOLE

ISSUED FOR:			
REV	DATE	DRWN	DESCRIPTION
0	08/04/22	RS	FINAL
			SPH



THIS ITEM HAS BEEN DIGITALLY SIGNED AND SEALED BY JAVAD K. PARSA, P.E. ON THE DATE ADJACENT TO THE SEAL. ANY ATTEMPT TO REPRODUCE OR FALSIFY THIS SEAL WITHOUT THE NECESSARY AUTHORITY IS PROHIBITED. IT IS A VIOLATION OF LAW FOR ANY PERSON, UNLESS THEY ARE ACTING UNDER THE DIRECTION OF A LICENSED PROFESSIONAL ENGINEER, TO ALTER THIS DOCUMENT.

SHEET NUMBER: **C-2** REVISION: **0**



VERIZON SITE NUMBER:
9066145
BU #: 824653
HWY 90 AT NW BROWN RD
297 NW BROWN ROAD
LAKE CITY, FL 32055
EXISTING 198'-0" MONOPOLE

ISSUED FOR:				
REV	DATE	DRWN	DESCRIPTION	DESIGN
0	08/04/23	PS	FINAL	SH



THIS ITEM HAS BEEN DIGITALLY SIGNED AND SEALED BY JAVAD K. PARS4, P.E. ON THE DATE ADJACENT TO THE SEAL. PRINTED COPIES OF THIS DOCUMENT ARE NOT CONSIDERED VALID UNLESS THEY ARE ACTING UNDER THE DIRECTION OF A LICENSED PROFESSIONAL ENGINEER. TO ALTER THIS DOCUMENT.

SHEET NUMBER: C-3
REVISION: 0

FINAL CABLE SCHEDULE				
STATUS	CABLE TYPE	SIZE	LENGTH	QTY
EXISTING	HYBRID	1-1/4"	220'-0" ±	2
TOTAL CABLE QTY:				2

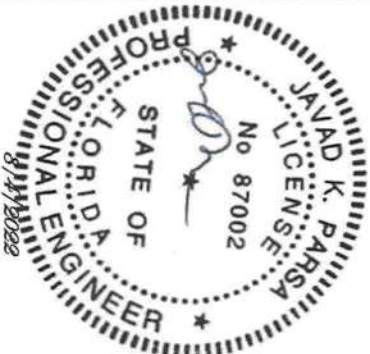
NOTE:
REFER TO RFDS FOR ELECTRICAL & MECHANICAL DOWNTILTS

FINAL EQUIPMENT SCHEDULE						
SECTOR	STATUS	ANTENNA MANUFACTURER	ANTENNA MODEL	ANTENNA CENTERLINE	AZIMUTH	TOWER EQUIPMENT MANUFACTURER
A1	EXISTING	JMA	MX06T1845-02	170'	40'	ERICSSON RANCAP
A2	EXISTING	JMA	MX06T1845-02	170'	40'	ERICSSON
A3	NEW	ERICSSON	AIR6449	170'	40'	-
B1	EXISTING	JMA	MX06T1845-02	170'	150'	ERICSSON RANCAP
B2	EXISTING	JMA	MX06T1845-02	170'	150'	ERICSSON
B3	NEW	ERICSSON	AIR6449	170'	150'	-
C1	EXISTING	JMA	MX06T1845-02	170'	260'	ERICSSON
C2	EXISTING	JMA	MX06T1845-02	170'	260'	ERICSSON
C3	NEW	ERICSSON	AIR6449	170'	260'	-

VERIZON EQUIPMENT SCHEDULE
1 SCALE: NOT TO SCALE

VERIZON SITE NUMBER:
9066145
BU #: 824653
HWY 90 AT NW BROWN RD
297 NW BROWN ROAD
LAKE CITY, FL 32055
EXISTING 198'-0" MONOPOLE

ISSUED FOR:				
REV	DATE	DRWN	DESCRIPTION	DWG./QA
0	08/04/23	PS	FINAL	SH



THIS ITEM HAS BEEN DIGITALLY SIGNED, AND SEALED BY
JAVAD K. PARSA, P.E. ON THE DATE ADJACENT TO THE SEAL.
PRINTED COPIES OF THIS DOCUMENT ARE NOT CONSIDERED
VALID UNLESS THEY ARE SIGNED AND SEALED BY THE ENGINEER
VERIFIED ON ANY ELECTRONIC COPIES.
IT IS A VIOLATION OF LAW FOR ANY PERSON,
UNLESS THEY ARE ACTING UNDER THE DIRECTION
OF A LICENSED PROFESSIONAL ENGINEER,
TO ALTER THIS DOCUMENT.

AIR 6449 B41, B77D, B78M, B43*

Regional Connect

- Advanced Antenna System (AAS)
- 64TX/64RX with 192 AE
- Up to 320W
- EIRP up to 79 dBm
- Up to 200 MHz IBW & CBW
- Max total carrier BW is 200MHz for NR, or 100MHz for LTE
- 4 x 25 Gbps eCPRI
- Weight: 47 kg
- Size (H x W x D): 841 x 524 x 211
- -48 VDC (3-wire or 2-wire)
- -40 to +55°C
- Support number of layers: DL/UL 16/8



1 ERICSSON – AIR6449
SCALE: NOT TO SCALE

4 NOT USED
SCALE: NOT TO SCALE

2 NOT USED
SCALE: NOT TO SCALE

5 NOT USED
SCALE: NOT TO SCALE

3 NOT USED
SCALE: NOT TO SCALE

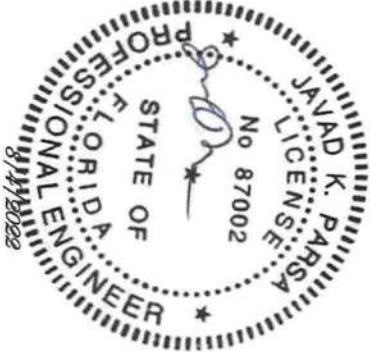
6 NOT USED
SCALE: NOT TO SCALE



VERIZON SITE NUMBER:
9066145

BU #: 824653
HWY 90 AT NW BROWN RD
297 NW BROWN ROAD
LAKE CITY, FL 32055
EXISTING 198'-0" MONOPOLE

ISSUED FOR:				
REV	DATE	DRWN	DESCRIPTION	DES./QA
0	08/04/22	PS	FINAL	SHH



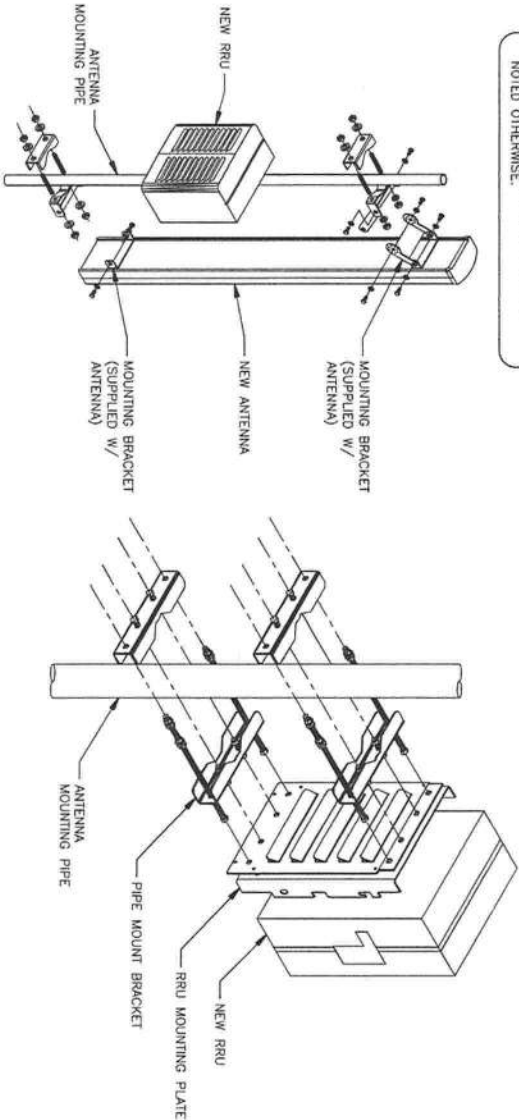
THIS ITEM HAS BEEN DIGITALLY SIGNED AND SEALED BY JAVAD K. PARSA, P.E. ON THE DATE ADJACENT TO THE SEAL. PRINTED COPIES OF THIS DOCUMENT ARE NOT CONSIDERED VALID UNLESS THE SIGNATURE AND SEAL ARE VERIFIED ON ANY ELECTRONIC COPIES.

IT IS A VIOLATION OF LAW FOR ANY PERSON, UNLESS THEY ARE ACTING UNDER THE DIRECTION OF A LICENSED PROFESSIONAL ENGINEER, TO ALTER THIS DOCUMENT.

SHEET NUMBER: C-5 REVISION: 0

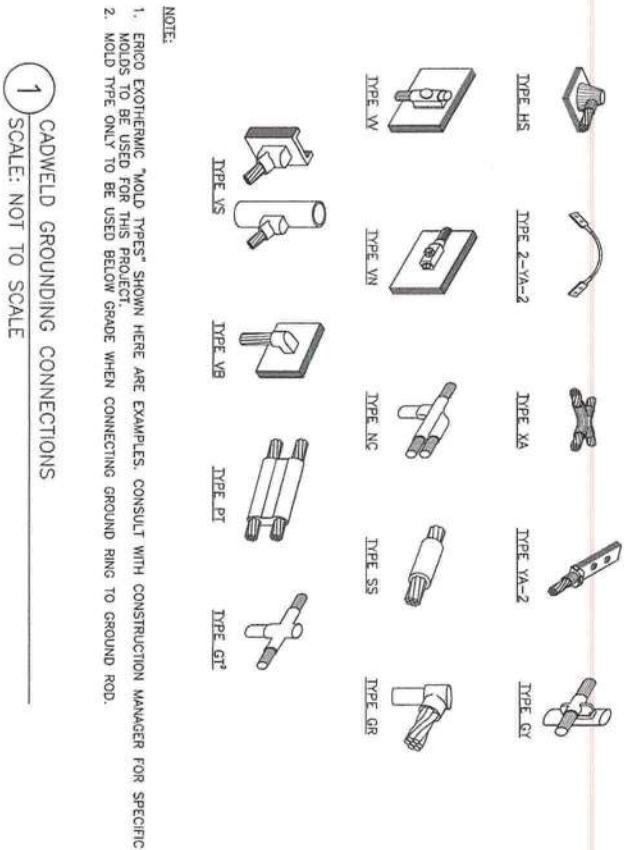
2 NOT USED
SCALE: NOT TO SCALE

INSTALLER NOTES:
1. COMPLY WITH MANUFACTURER'S INSTRUCTIONS TO ENSURE THAT ALL RRUs REMAIN PROPERLY MOUNTED WITHIN 24 HOURS OF BEING REMOVED FROM THE MANUFACTURER'S PACKAGING.
2. DO NOT OPEN RRU PACKAGES IN THE RAIN.
3. ALL PIPES, BRACKETS, AND MISCELLANEOUS HARDWARE TO BE GALVANIZED UNLESS NOTED OTHERWISE.

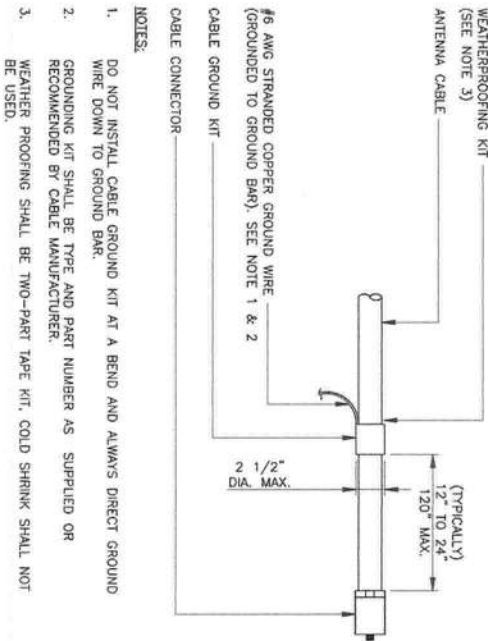


3 ANTENNA WITH RRU MOUNTING DETAIL
SCALE: NOT TO SCALE

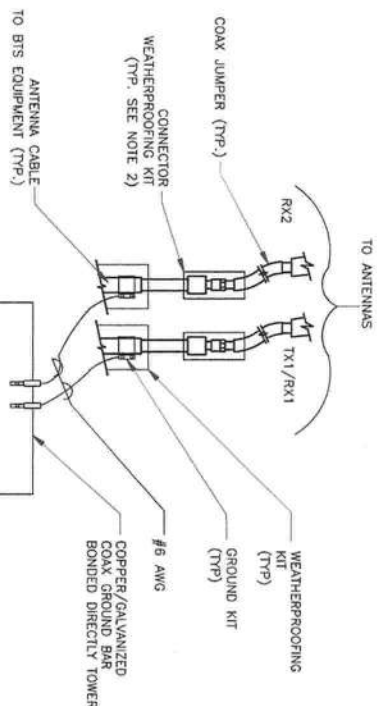
1 NOT USED
SCALE: NOT TO SCALE



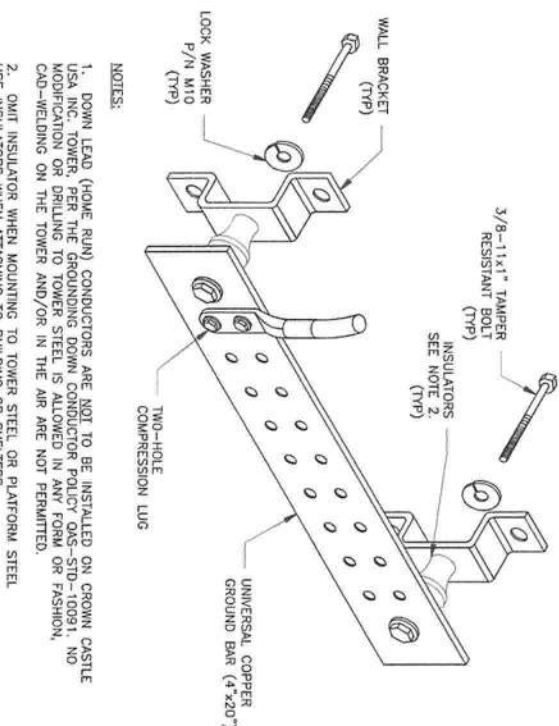
1 CADWELD GROUNDING CONNECTIONS
SCALE: NOT TO SCALE



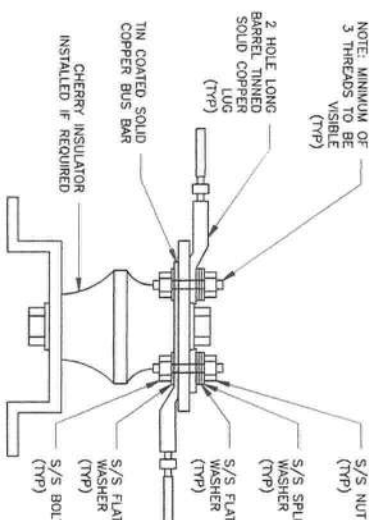
3 CABLE GROUND KIT CONNECTION
SCALE: NOT TO SCALE



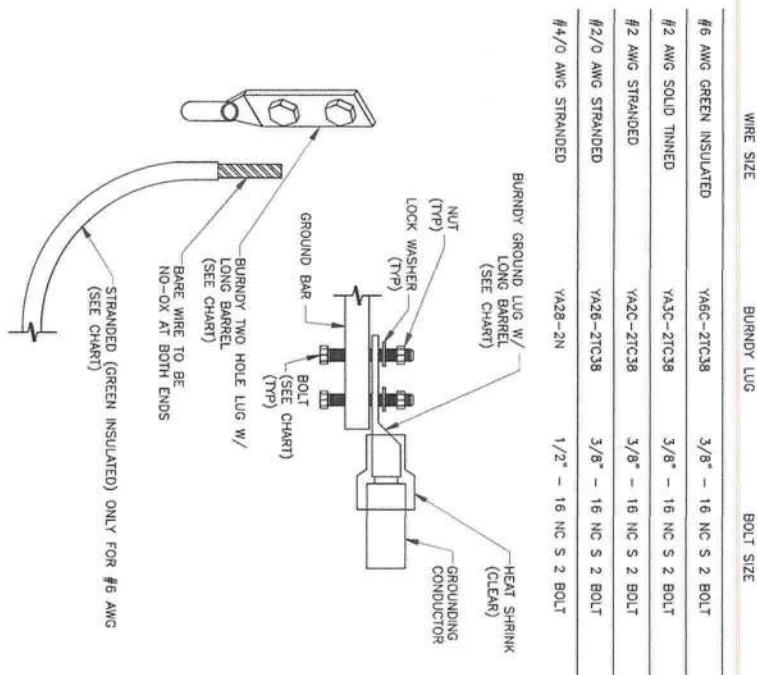
4 GROUND CABLE CONNECTION
SCALE: NOT TO SCALE



6 GROUND BAR DETAIL
SCALE: NOT TO SCALE

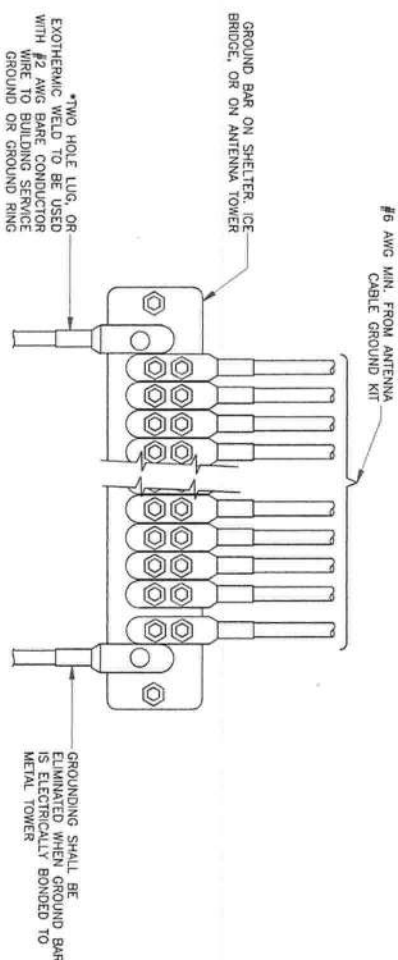


7 LUG DETAIL
SCALE: NOT TO SCALE

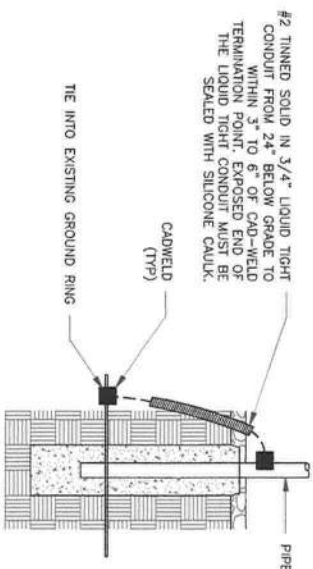


- NOTES:
- ALL GROUNDING LUGS ARE TO BE INSTALLED PER MANUFACTURER'S SPECIFICATIONS. ALL HARDWARE BOLTS, NUTS, LOCK WASHERS SHALL BE STAINLESS STEEL. ALL HARDWARE ARE TO BE AS FOLLOWS: BOLT, FLAT WASHER, GROUND BAR, GROUND LUG, FLAT WASHER AND NUT.

2 MECHANICAL LUG CONNECTION
SCALE: NOT TO SCALE



5 GROUNDWIRE INSTALLATION
SCALE: NOT TO SCALE



8 TRANSITIONING GROUND DETAIL
SCALE: NOT TO SCALE

verizon

7701 EAST TELECOM PARKWAY WING A-1
TEMPLE TERRACE, FL 33637

CROWN CASTLE

8000 AVAION BLVD, SUITE 700
ALPHARETTA, GA 30009

towersource
A Westedge Company

1355 WINDWARD CONCOURSE
SUITE 410
ALPHARETTA, GA 30005
TEL: 678-990-2338

VERIZON SITE NUMBER:
9066145

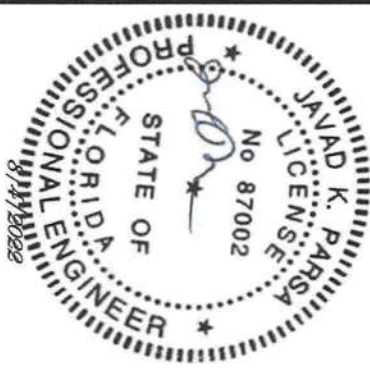
BU #: 824653

HWY 90 AT NW BROWN RD

297 NW BROWN ROAD
LAKE CITY, FL 32055

EXISTING 198'-0" MONOPOLE

ISSUED FOR:				
REV	DATE	DRAWN	DESCRIPTION	DWG./QTY
0	08/04/22	RS	FINAL	SH



THIS ITEM HAS BEEN DIGITALLY SIGNED AND SEALED BY JAVAD K. PARSA, P.E. ON THE DATE ADJACENT TO THE SEAL. PRINTED COPIES OF THIS DOCUMENT ARE NOT CONSIDERED VALID UNLESS THE SIGNATURE MUST BE VERIFIED BY ITS A VIOLATION OF LAW FOR ANY PERSON, UNLESS THEY ARE ACTING UNDER THE DIRECTION OF A LICENSED PROFESSIONAL ENGINEER, TO ALTER THIS DOCUMENT.

SHEET NUMBER: **G-2** REVISION: **0**