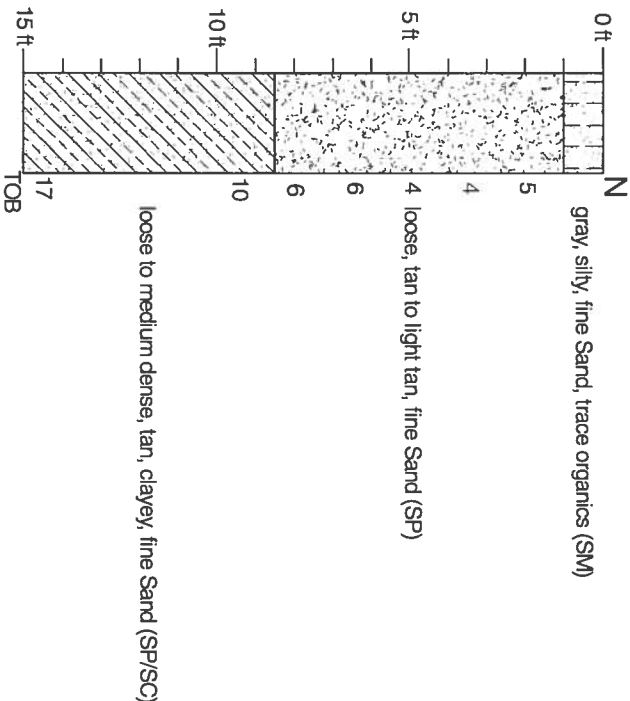


B-1

Water Table: 11.5 ft.

Depth (ft)

Soil Description

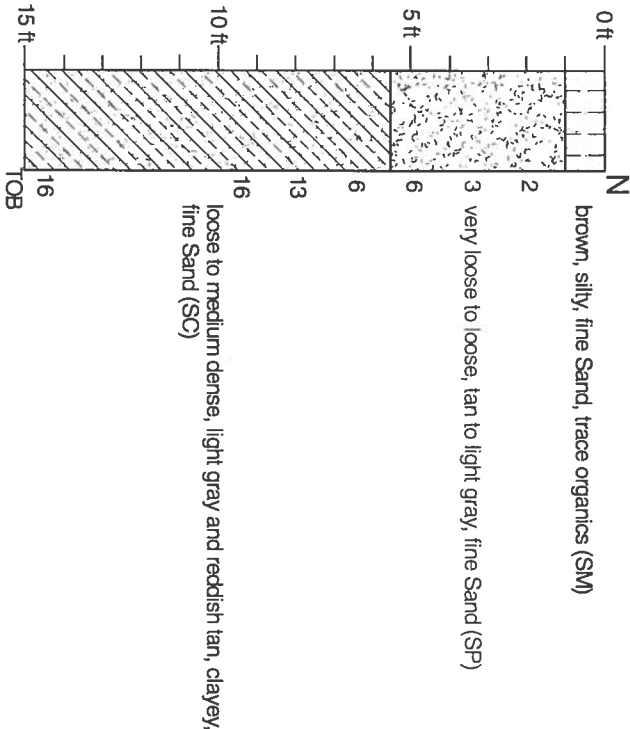


B-2

Water Table: 11.0 ft.

Depth (ft)

Soil Description

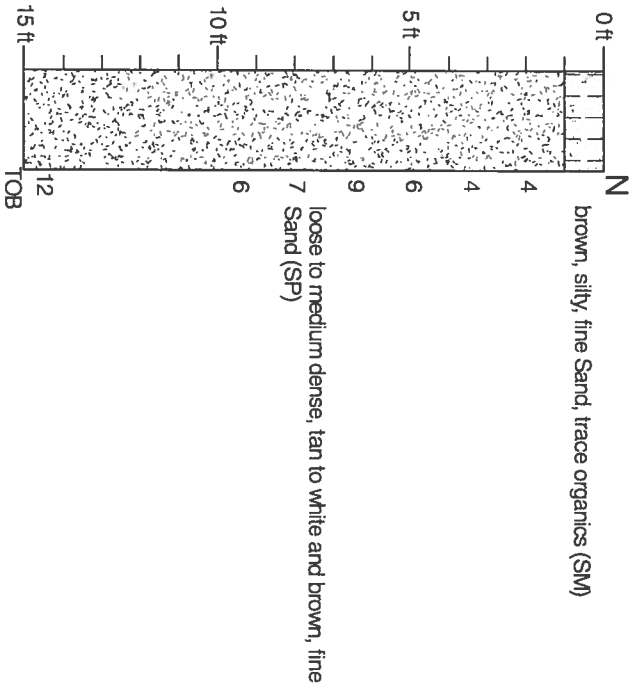


B-3

Water Table: 11.0 ft.

Depth (ft)

Soil Description

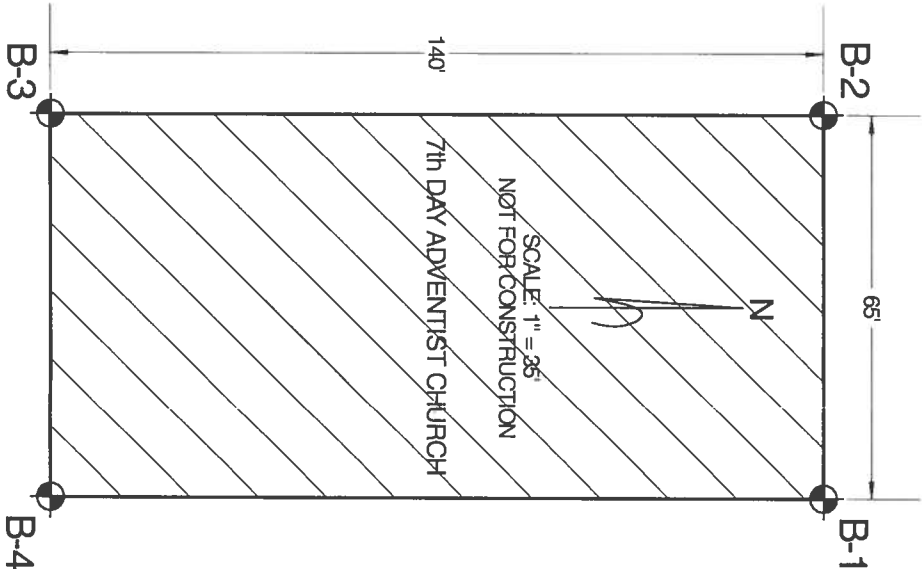
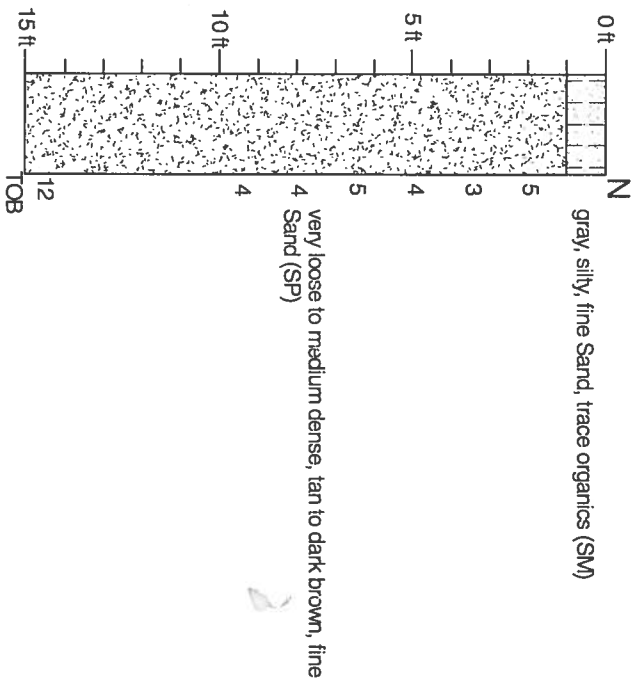



B-4

Water Table: 10.0 ft.

Depth (ft)

Soil Description



REVISIONS							
DATE	BY	DESCRIPTION	DATE	BY	DESCRIPTION	NAMES	DATE
						DRAWN BY	8/22/07
						CHECKED BY	
						DRILLED BY	8/22/07
						APPROVED BY	
						CAL-TECH JOB NO.	07-00408
<div>ENGINEER OF RECORD CAL-TECH TESTING, INC. P.O. BOX 1625 LAKE CITY, FL 32056 PHONE NO. (386) 755-3633 FAX NO. (386) 752-5456</div> <div></div>							
<div>SUBSURFACE EXPLORATION 7th DAY ADVENTIST CHURCH LAKE CITY, FLORIDA</div> <div>ROAD NO. COLUMBIA</div> <div>COUNTY FINANCIAL PROJECT ID.</div>							
<div>GENERALIZED SUBSURFACE PROFILE & FIELD EXPLORATION PLAN</div>							
FIGURE: 1							

CAL-TECH TESTING, INC.

P.O. BOX 1825
LAKE CITY, FL 32056
PHONE NO. (386) 755-3833
FAX NO. (386) 752-5456

Cal-Tech Testing, Inc.
ENGINEERING FOUNDATION, ASPHALT, CONCRETE, SOILS, & CIVIL
INTERNATIONAL

ENGINEERING CLASSIFICATION		
GRANULAR MATERIALS-		
Relative Density	SPT	(Blows/12 inches)
Density		
Very Loose		Less than 4
Loose		4-10
Medium Dense		11-30
Dense		31-50
Very Dense		Greater than 50
SILTS AND CLAYS-		
Consistency	SPT	(Blows/12 inches)
Very Soft		Less than 2
Soft		2-4
Medium Stiff		5-8
Stiff		9-15
Very Stiff		16-30
Hard		Greater than 30

LEGEND:	
TOB	Termination of Boring
GSE	Ground Surface Elevation
Y	Ground Water at Time of Drilling
Y	Wet Season Water Table
N	Standard Penetration Resistance in Blows Per 12 inches (18-inch Spoon, ASTM D-1586)
WOR	Weight of Rod
WOH	Weight of Hammer
MC	Moisture Content (%)
OC	Organic Content (%)
-200	Percent Passing No. 200 U.S. Standard Sieve
LL	Liquid Limit
PI	Plasticity Index
(SP)	Unified Soil Classification Based on Visual Observation and Laboratory Tests
SAND	
SAND with SILT	
SAND with CLAYEY SAND	
SANDY CLAY	
CLAY	
MARL	
SANDY CLAY	
LIMESTONE	
ORGANICS	