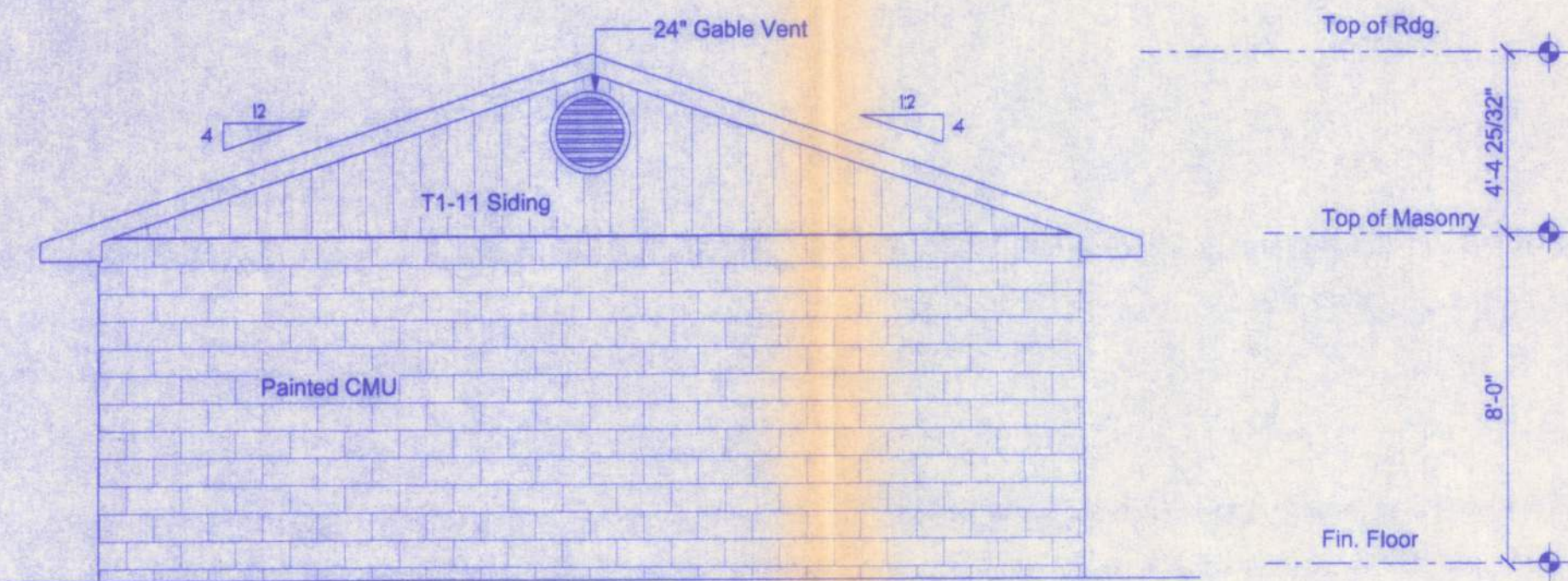
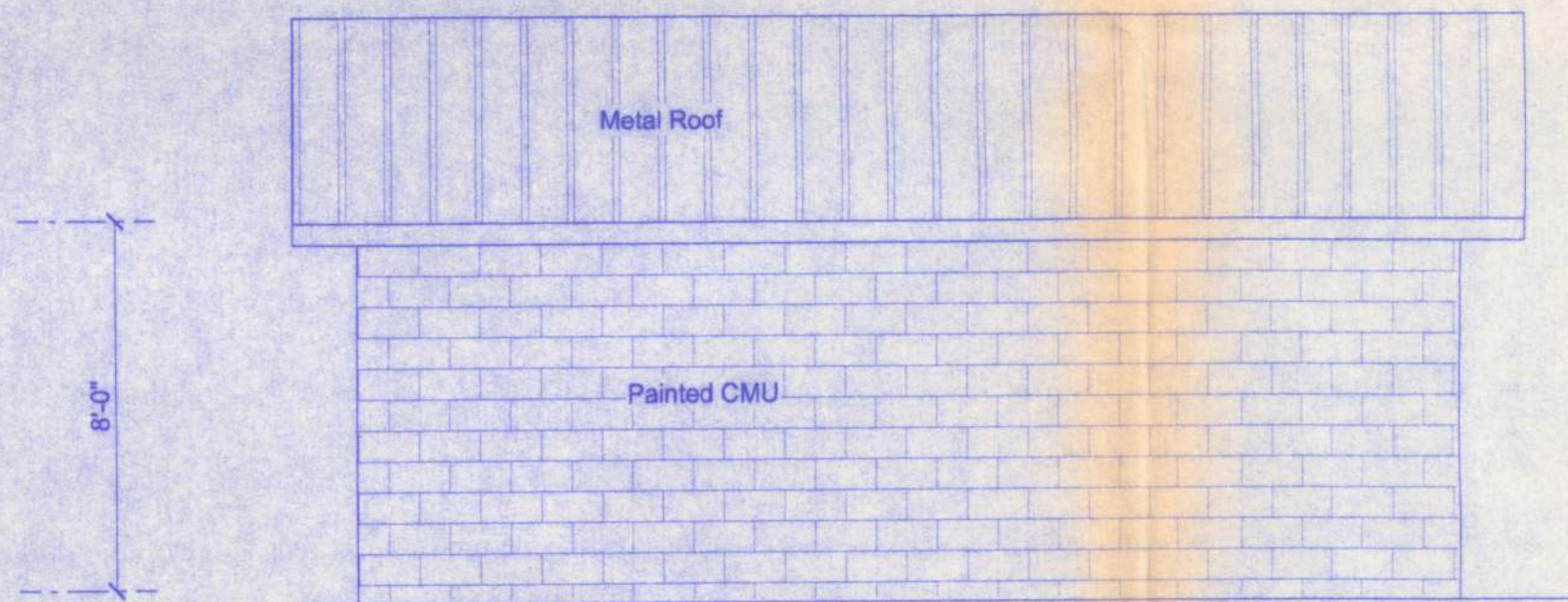


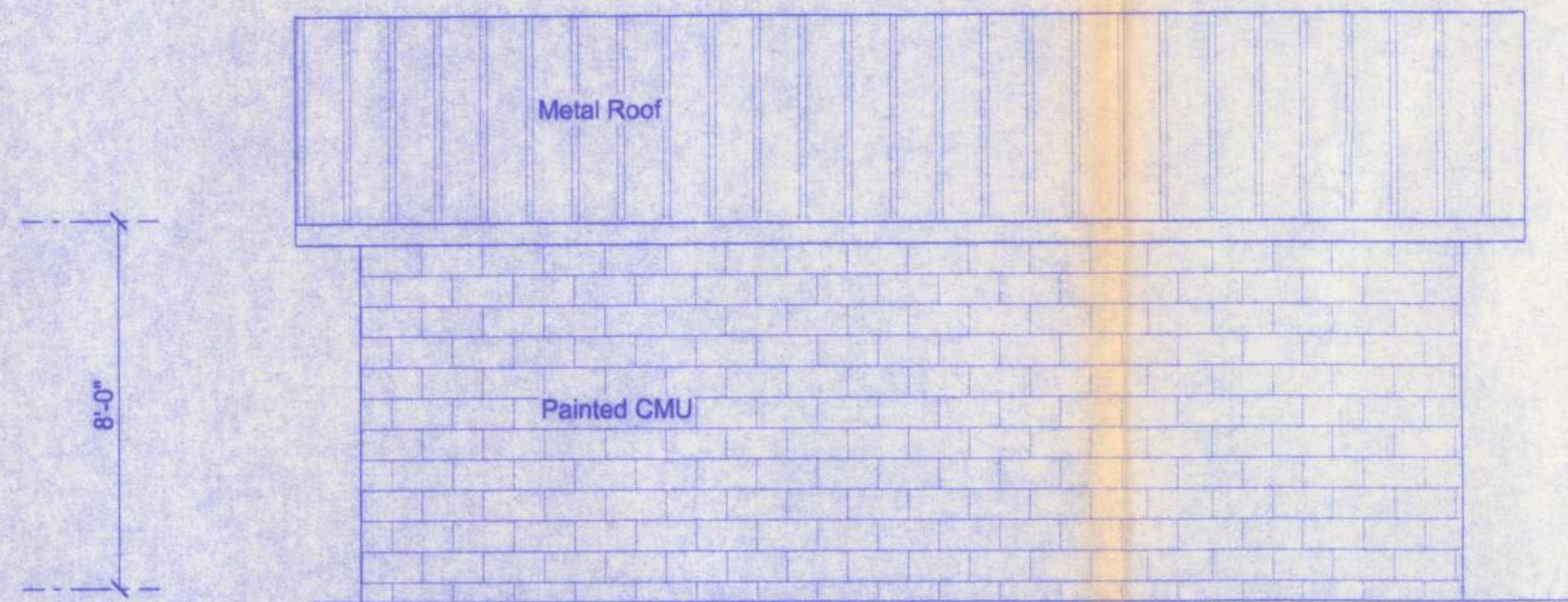
**FRONT ELEVATION**  
SCALE: 1/4" = 1'-0"



**REAR ELEVATION**  
SCALE: 1/4" = 1'-0"



**LEFT ELEVATION**  
SCALE: 1/4" = 1'-0"



**RIGHT ELEVATION**  
SCALE: 1/4" = 1'-0"

**FIREBLOCKING NOTES:**

- FIREBLOCKING SHALL BE INSTALLED IN WOOD FRAME CONSTRUCTION IN THE FOLLOWING LOCATIONS:
1. IN CONCEALED SPACES OF STUD WALLS AND PARTITIONS INCLUDING FURRED SPACES AT CEILING AND FLOOR LEVELS.
  2. AT ALL INTERCONNECTIONS BETWEEN CONCEALED VERTICAL AND HORIZONTAL SPACES SUCH AS OCCUR AT SOFFITS, DROP CEILINGS, COVE CEILINGS, ETC.
  3. IN CONCEALED SPACES BETWEEN STAIR STRINGERS AT THE TOP AND BOTTOM OF THE RUN.
  4. AT OPENINGS AROUND VENTS, PIPES, DUCTS, CHIMNEYS AND FIREPLACES AT CEILING AND FLOOR LEVELS WITH PYROPANEL MULTIFLEX SEALANT
  5. AT ALL INTERCONNECTIONS BETWEEN CONCEALED VERTICAL STUD WALL OR PARTITION SPACES AND CONCEALED SPACES CREATED BY AN ASSEMBLY OF FLOOR JOISTS, FIREBLOCKING SHALL BE PROVIDED FOR THE FULL DEPTH OF THE JOISTS AT THE ENDS AND OVER THE SUPPORTS.

**NOTE:**  
VENTILATION SHALL BE PROVIDED TO FURNISH CROSS VENTILATION OF EACH SEPARATE ATTIC SPACE WITH WEATHER PROTECTED VENTS. ALL VENTS SHALL BE SCREENED TO PROTECT THE INTERIOR FROM INTRUSION OF BIRDS. THE RATIO OF TOTAL NET FREE VENTILATING AREA TO THE AREA OF CEILING SHALL NOT BE LESS THAN 1/150.

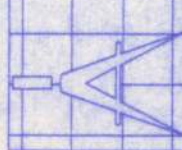
**STEEL COATING RECOMMENDATIONS IN PRESSURE TREATED WOOD:**

- Thicker galvanizing generally extends service life of a product. The treated wood industry recommends use of Stainless Steel and hot-dip galvanized connectors and fasteners with treated wood.
  - Due to the uncertainties, which are out of the specifiers control, in regard to the chemicals used in pressure treated wood, Simpson recommends the use of stainless steel fasteners, anchors and connectors with treated wood when possible. At a minimum, customers should use ZMAX (G185 HDG per ASTM A653), Batch/Post Hot-Dip Galvanized (per ASTM A123 for connectors and ASTM A153 for fasteners), or mechanically galvanized fasteners (per ASTM B695, Class 55 or greater), product with the newer alternative treated woods.
  - G60 galvanized products should not be used with treated woods.
  - G90 galvanized connectors can be used with Sodium Borate (DOT - Disodium Octaborate Tetrahydrate) treated woods. Sodium Borate Treated woods are not suitable for applications where moisture exposure is likely. They are suitable for mudsill applications when transported, stored, and installed appropriately.
- When using stainless steel or hot-dip galvanized connectors, the connectors and fasteners should be made of the same material.

Simpson Strong-Tie Product Finishes	Untreated Wood	Chromated Copper Arsenate (CCA-C)	DOT Sodium Borate (SBX)	Alkaline Copper Quat. ACQ-C and ACQ-D (Carbonate)	Copper Azole (CBA-A and CA-B)	SBX (DOT) with NASIO <sub>2</sub>	Ammoniacal Copper Zinc Arsenate (ACZA)	Other Pressure Treated Woods
Standard (G90)	X	X	X					
ZMAX (G185)	X	X	X	X	X	X		
Post Hot-Dip Galvanized (HDG)	X	X	X	X	X	X	X	X
SST300 (Stainless Steel)	X	X	X	X	X	X	X	X

**PHILADELPHIA BAPTIST  
CHURCH ADDITION**

161 NW MADISON STREET  
SUITE #102  
LAKE CITY, FL. 32055  
(386)758-4209



**Freeman**  
Design Group inc

DATE  
9/12/05

DRAWN BY  
W.H.F.

REVISIONS

SHEET  
A-3

OF  
4

PROJECT NO.

CERTIFICATE OF AUTHORIZATION # 00008701