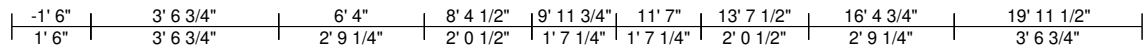
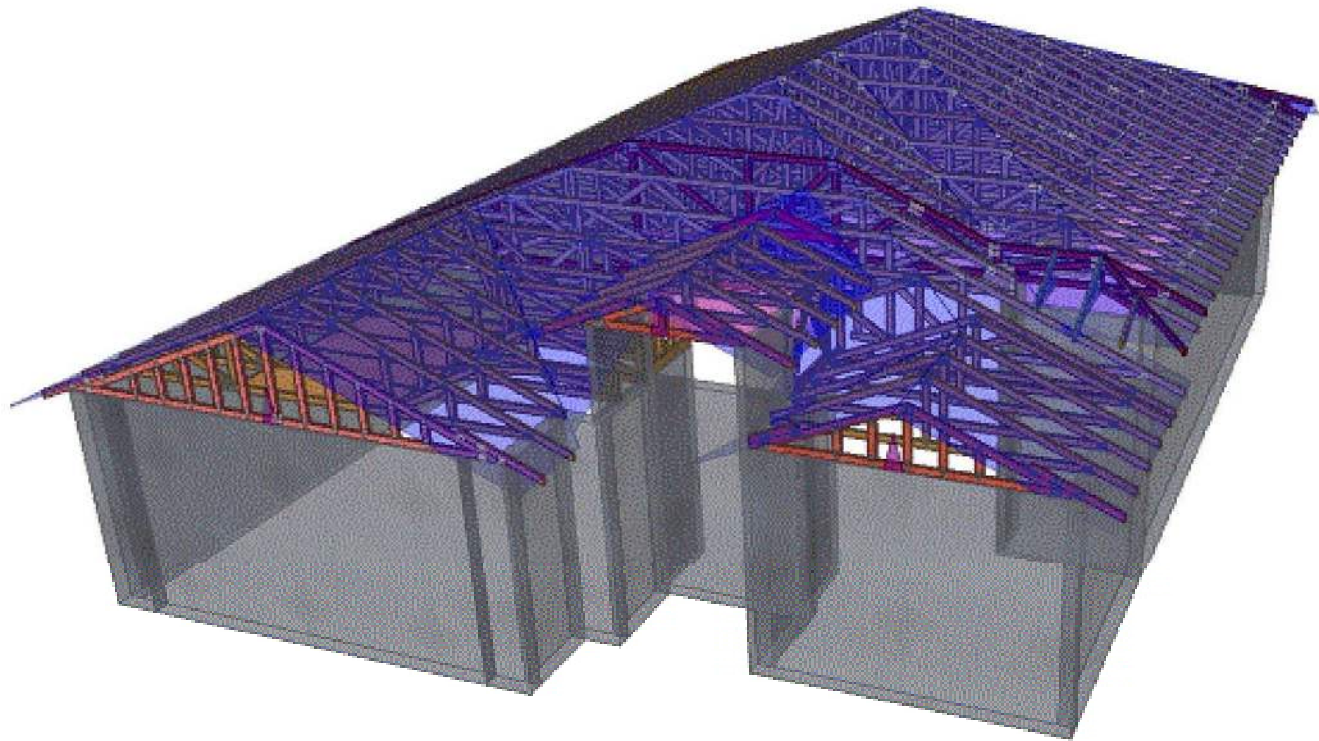
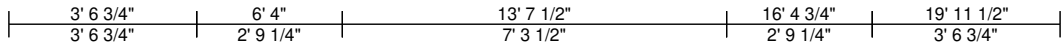
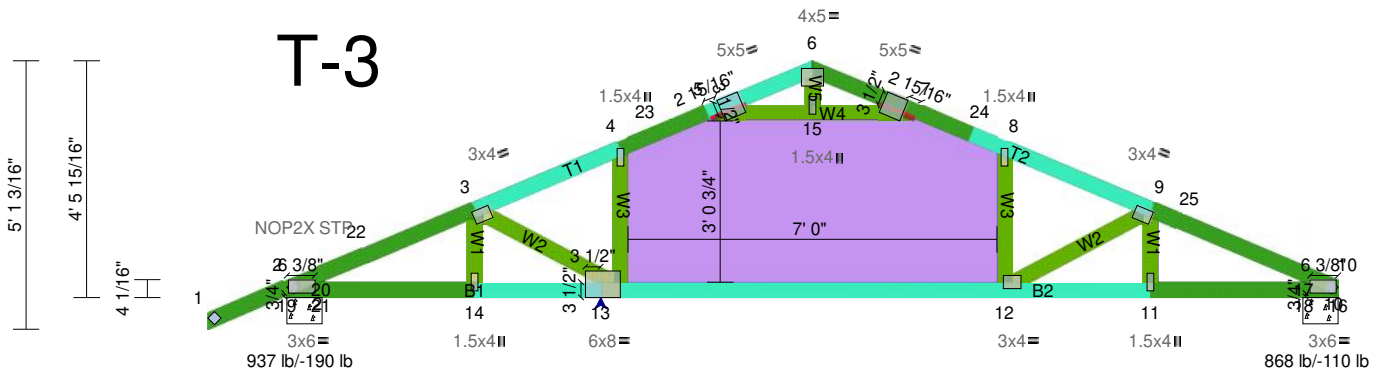


LINCOLN MODEL III
LOT 18, NW SAVANNAH CIR., LAKE CITY, FL 32055



T-3



Max CSIs
TC = LC: 25 (6-10) - 0.66
BC = LC: 16 (13-10) - 0.79
Web = LC: 2 (5-7) - 0.45
Max SSI = LC: 16 (6-10) - 0.62
Max Horizontal Deflection = 0.10"
Max Vertical Deflection = 0.44"
\$122.40
\$81.60 (Mat. Only)

LUMBER
TC 2x4 SP No.1
BC 2x4 SP No.1
WB 2x4 SP No.2
1 - Ply
Truss Spacing = 2' 0"
Current Board Footage = 44.22

Ram Goel
Digitally signed by Ram Goel
DN:
E=Soneyfmllc@yahoo.com,
CN=Ram Goel,
OU=ENGINEERING,
O=Soney FM LLC,
L=Tampa, S=Florida, C=US
Date: 2022.04.25
11:55:01-0400

- NOTES:
1. THIS ITEM HAS BEEN ELECTRONICALLY SIGNED & SEALED BY RAM A. GOEL USING A DIGITAL SIGNATURE & DATE.
 2. PRINTED COPIES OF THIS DOCUMENT ARE NOT CONSIDERED SIGNED & SEALED. THIS SIGNATURE MUST BE VERIFIED ON ANY ELECTRONIC COPIES.

THIS DRAWING IS AN INSTRUMENT OF SERVICE, THE PROPERTY OF THE ENGINEER, AND SHALL NOT BE REPRODUCED, COPIED, OR IN ANY WAY WITHOUT THE WRITTEN CONSENT OF THE ENGINEER. THIS IS TO CERTIFY THAT I HAVE REVIEWED THIS DRAWING AND IT IS IN COMPLIANCE WITH CHAPTER 16 OF 2020 FLORIDA BUILDING CODE AND ALL APPLICABLE SUPPLEMENTS.

RAM A. GOEL, P.E. # 47431
COPIES OF THIS DRAWING ARE VALID FOR THE STATE OF FLORIDA
PROFESSIONAL ENGINEER