

35'-0"

65'-0"

30'-0" OPEN

1. THESE PLANS PERTAIN ONLY TO THE STRUCTURE, INCLUDING MAIN WIND FORCE RESISTING SYSTEM, COMPONENTS AND CLADDING, AND BASE RAIL ANCHORAGE, OTHER DESIGN ISSUES, INCLUDING BUT NOT LIMITED TO PLUMBING, ELECTRICAL, INGRESS/EGRESS, PROPERTY SET-BACKS, FINISH FLOOR ELEVATION AND SLOPE, OR OTHER LOCAL ZONING REQUIREMENTS ARE THE RESPONSIBILITY OF OTHERS.
2. THE DESIGNER SHALL PROVIDE A MINIMUM 12" CLEARANCE BETWEEN THE STRUCTURE AND ANY ADJACENT STRUCTURE OR OBSTACLE, INCLUDING BUT NOT LIMITED TO PLUMBING, ELECTRICAL, INGRESS/EGRESS, PROPERTY SET-BACKS, FINISH FLOOR ELEVATION AND SLOPE, OR OTHER LOCAL ZONING REQUIREMENTS.
3. THE DESIGNER SHALL PROVIDE A MINIMUM 12" CLEARANCE BETWEEN THE STRUCTURE AND ANY ADJACENT STRUCTURE OR OBSTACLE, INCLUDING BUT NOT LIMITED TO PLUMBING, ELECTRICAL, INGRESS/EGRESS, PROPERTY SET-BACKS, FINISH FLOOR ELEVATION AND SLOPE, OR OTHER LOCAL ZONING REQUIREMENTS.
4. THE DESIGNER SHALL PROVIDE A MINIMUM 12" CLEARANCE BETWEEN THE STRUCTURE AND ANY ADJACENT STRUCTURE OR OBSTACLE, INCLUDING BUT NOT LIMITED TO PLUMBING, ELECTRICAL, INGRESS/EGRESS, PROPERTY SET-BACKS, FINISH FLOOR ELEVATION AND SLOPE, OR OTHER LOCAL ZONING REQUIREMENTS.
5. PLUMBING, ELECTRICAL, INGRESS/EGRESS, PROPERTY SET-BACKS, AND/OR OTHER LOCAL CODE REQUIREMENTS ARE THE RESPONSIBILITY OF THE OWNER.
6. FIELD FRAMING CONNECTIONS SECURED WITH #12-14x3/4" SELF-DRILLING SCREWS.
7. ALL SHOP FRAMING CONNECTIONS ARE TO BE WELDED, NO WELDING DONE IN SHOP BY A CERTIFIED WELDER.
8. CONCRETE EXPANSION ANCHORS ARE TO BE MINIMUM 1/2" DIAMETER & 2,500LB TENSILE STRENGTH.
9. 14GA. FRAMING IS 2.5"x2.5" TUBE STEEL, APPLIES ARE 2.25"x2.25" TUBE STEEL.
10. ANY FILL SOIL NEEDED FOR THE FOUNDATION IS TO BE COMPACTED TO 95%.

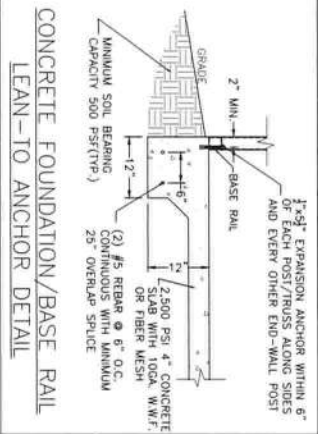
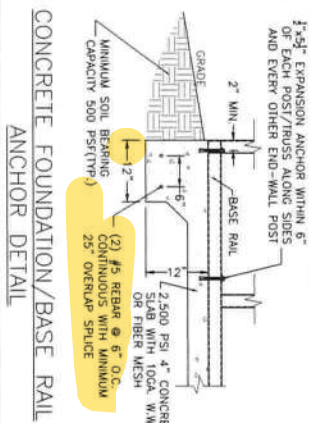
#### NOTES:

- SUB-GRADE SOILS.
- TO BE TREATED TREATED AND COVERED WITH 6 MIL VAPOR RETARDANT PER SECTION 3118 AND 1816 OF THE 2020 FLORIDA BUILDING CODE, 7TH EDITION.
- MINIMUM 12" CLEARANCE BETWEEN THE STRUCTURE AND ANY ADJACENT STRUCTURE OR OBSTACLE, INCLUDING BUT NOT LIMITED TO PLUMBING, ELECTRICAL, INGRESS/EGRESS, PROPERTY SET-BACKS, FINISH FLOOR ELEVATION AND SLOPE, OR OTHER LOCAL ZONING REQUIREMENTS.
- MINIMUM 2,500 PSI COMPRESSIVE STRENGTH AT 28 DAYS.
- ALL OPEN AREAS OF CONCRETE OUTSIDE OF THE PROPOSED STRUCTURE SHALL BE DESIGNED TO MATCH FROM THE STRUCTURE.
- REINFORCING STEEL (REBAR) REQUIREMENTS:
- MINIMUM GRADE 40 STEEL.
- REBAR MAY BE BENT IN SHOP OR FIELD PROVIDED:
- THE DIAMETER OF THE BEND MEASURED ON THE INSIDE DOES NOT EXCEED 6-BAR DIAMETERS, AND
- REINFORCING STEEL SHALL BE PARTIALLY ENCASED IN CONCRETE SHALL NOT BE FIELD BENT EXCEPT WHERE SHOWN OTHERWISE.
- THE REBAR MAY BE BENT NOT TO EXCEED TO SLOPE OF 1" HORIZONTAL TO 6" VERTICAL.
- COVER:
- 3" COVER MINIMUM WHERE THE CONCRETE IS CAST AGAINST AND PERMANENTLY IN CONTACT WITH SOIL OR WEATHER, AND 1 1/2" ELSEWHERE. REBAR EMBEDDED IN GROUTED CELLS SHALL HAVE A MINIMUM CLEAR DISTANCE OF 1" FOR THE GROUT, AND 1/2" FOR COARSE GROUT BETWEEN REBAR AND ANY FACE OF A CELL.
- REBAR USED IN MASONRY WALLS SHALL HAVE A MASONRY COVER (INCLUDING GROUT) OF NOT LESS THAN 2" FOR MASONRY UNITS NOT EXPOSED TO EARTH OR WEATHER, AND 1 1/2" FOR MASONRY UNITS NOT EXPOSED TO EARTH OR WEATHER.
- GALVANIZATION:
- ALL FASTENERS FOR USE IN EXTERIOR WALL CONSTRUCTION AND NOT DIRECTLY EXPOSED TO WEATHER SHALL BE GALVANIZED IN ACCORDANCE WITH ASTM A 153, CLASS B-2. METAL PLATE CONNECTORS, SCREWS, BOLTS, AND NAILS EXPOSED DIRECTLY TO WEATHER SHALL BE STAINLESS STEEL, OR HOT DIPPED GALVANIZED.

MIN. 2,500 PSI 4" CONCRETE SLAB WITH 10GA. W.W.F. (OR FIBER MESH) AND 16"x14"(12"x12" LEAN-TO) REINFORCED FOOTER PERIMETER WINDOW

12"x12" REINFORCED FOOTER

40'-0"



THIS ITEM HAS BEEN DIGITALLY SIGNED AND SEALED BY MATTHEW BALDWIN, PE, ON 12/2/2022. PRINTED COPIES OF THIS DOCUMENT ARE NOT CONSIDERED SIGNED AND SEALED AND THE SHA AUTHENTICATION CODE MUST BE VERIFIED ON ANY ELECTRONIC COPIES.

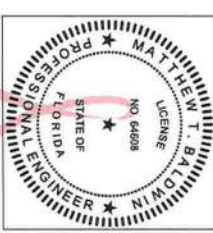
CARPORTS ANYWHERE

#### CODE INFORMATION

CODE VERSION	IBC 2020 7th Edition
MANUFACTURER	CARPORTS ANYWHERE
BUILDING TYPE	UTILITY STRUCTURE
CONSTRUCTION TYPE	I-B
RISK CATEGORY	1
FIRE PROTECTION	NONE
FIRE SUPPRESSION SYSTEM	NONE
OCCUPANCY	UTILITY, U
WIND SPEED	140 mph
EXPOSURE	B
ENCLOSURE	ENCLOSURE/OPEN
INTERNAL PRESSURE COEFF.	+/- 0.18/0.0
IMPORTANCE FACTOR	1.0
ROOF DEAD LOAD	20PSF OR 200lb P.L.
FLOOR DEAD LOAD	10PSF
FLOOR LIVE LOAD	50PSF
TREATING OF WALLS/FLOOR/ROOF	N/A
MODULES PER BUILDING	1
HURRICANE PROTECTION USAGE	NO
SQUARE FOOTAGE	3,080 SQ. FT.

REV	DESCRIPTION	DATE	BY
-----	-------------	------	----

DESIGNED BY	MTB
DATE	12/2/22
PROJECT	165 NW Open Ct. Lake City
SIZE	65' L x 52' W x 12' H



Digitally signed  
by Matthew  
Baldwin  
Date: 2022.12.02  
15:35:47 -05'00'

Matthew T. Baldwin P.E.  
Florida License #64608  
Sheet: CA-1 OF 6



CODE INFORMATION		REC 2020 7th Edition
MANUFACTURER		CARBONX ANYWHERE
BUILDING TYPE		UTILITY STRUCTURE
CONSTRUCTION TYPE		I - B
RISK CATEGORY		I
FIRE PROTECTION		NONE
FLOOD SUPPRESSION SYSTEM		NONE
OCCUPANCY		UTILITY U
WIND SPEED		Vel=14mph B
EXPOSURE		ENCLOS/OPEN
NATURAL PRESSURE COEFF.		1.0 0.18/0.0
IMPACTED FACIOR		1095F
ROOF DEAD LOAD		1095F
ROOF LIVE LOAD		1095F OR 3000 P.L.
FLOOR DEAD LOAD		1095F
FLOOR LIVE LOAD		5095F
TY RATING OF WALL/DOOR/ROOF		N/A
MODULES PER BUILDING		1
HURRICANE PROTECTION USAGE		NO
HURRICANE SHELTER USAGE		NO
SQUARE FOOTAGE		3,080 SQ. FT.

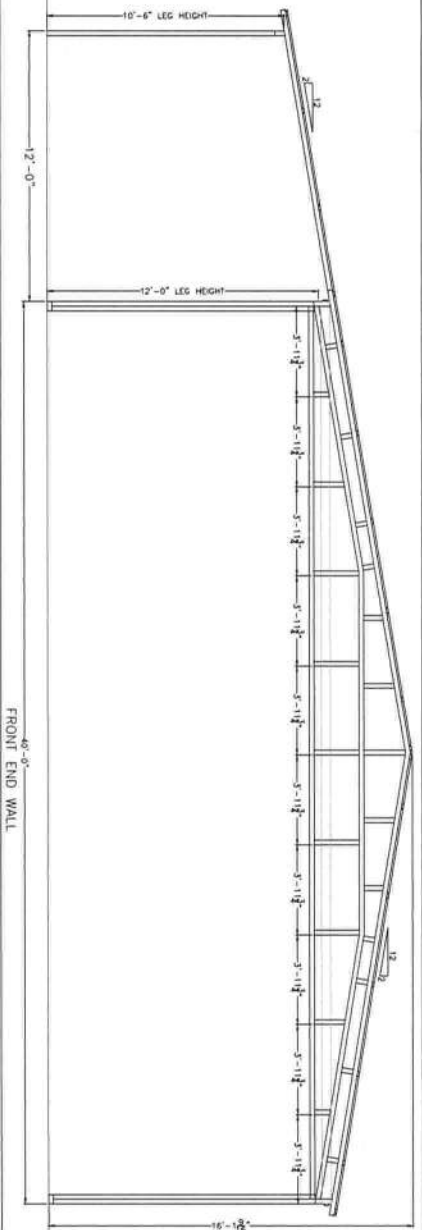
[illegible]

DEAN BRT	MTB
DATE	12/2/22
LOCATION	165 NW Open Ct, Lake City
SIZE	65'L X 52'W X 12'H

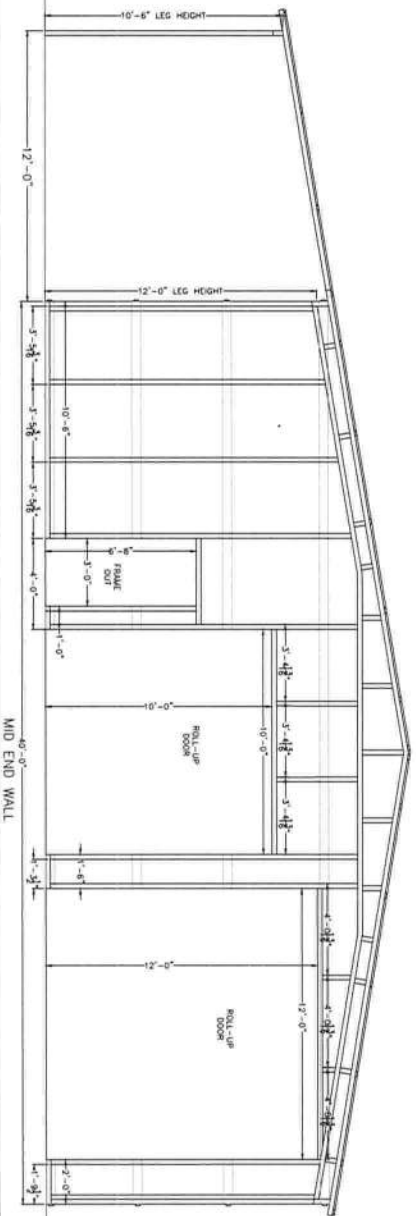
TITLE: END FRAMING VIEWS

Matthew T. Baldwin P.E.  
Florida License #64608

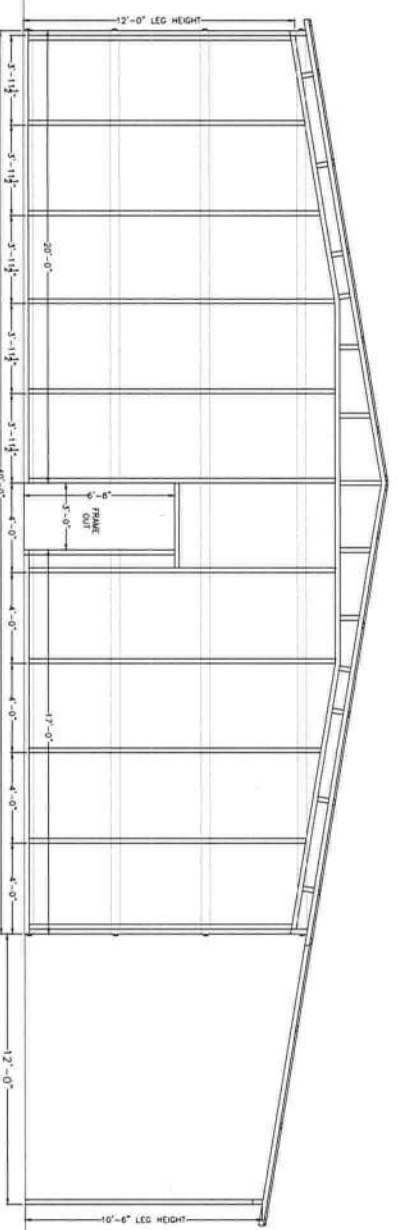
Sheet: CA-2 OF 6



FRONT END WALL



MID END WALL



REAR END WALL

THIS ITEM HAS BEEN DIGITALLY SIGNED AND SEALED BY MATTHEW BALDWIN, PE, ON 12/2/2022  
PRINTED COPIES OF THIS DOCUMENT ARE NOT CONSIDERED SIGNED AND SEALED AND THE SHA  
AUTHENTICATION CODE MUST BE VERIFIED ON ANY ELECTRONIC COPIES.

CODE INFORMATION

CODE VERSION	FBC 2020 7th Edition
MANUFACTURER	ASC-7-16
BUILDING TYPE	CARPORTS ANYWHERE
CONSTRUCTION TYPE	UTILITY STRUCTURE
RISK CATEGORY	I-B
FIRE PROTECTION	NONE
FIRE SUPPRESSION SYSTEM	NONE
OCCUPANCY	UTILITY, U
WIND SPEED	WVI-140mph
EXPOSURE	B
ENCLOSURE	ENCLOSED/OPEN
INTERNAL PRESSURE COEFF.	+/- 0.18/0.0
IMPORTANCE FACTOR	1.0
ROOF DEAD LOAD	10PSF
ROOF LIVE LOAD	20PSF OR 300lb P.L.
FLOOR DEAD LOAD	10PSF
FLOOR LIVE LOAD	50PSF
RETAINING OF WALLS/FLOOR/ROOF	N/A
MODULES PER BUILDING	1
HURRICANE PROTECTION USAGE	NO
HURRICANE SHELTER USAGE	NO
SQUARE FOOTAGE	3,080 SQ. FT.

REV	DESCRIPTION	DATE	BY
-----	-------------	------	----

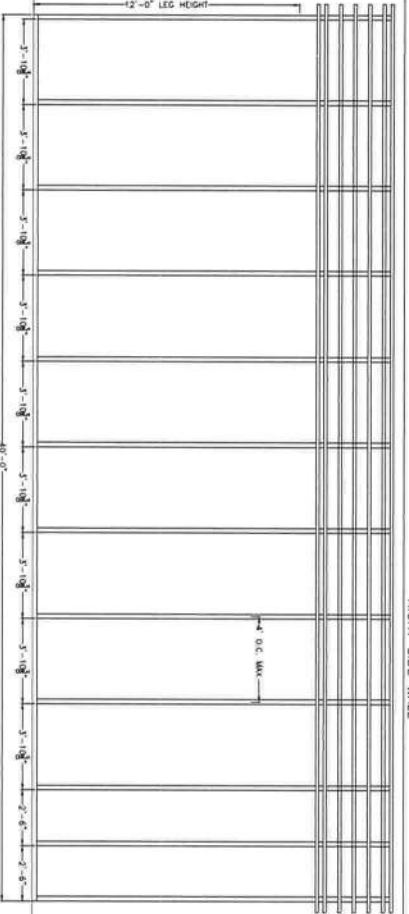
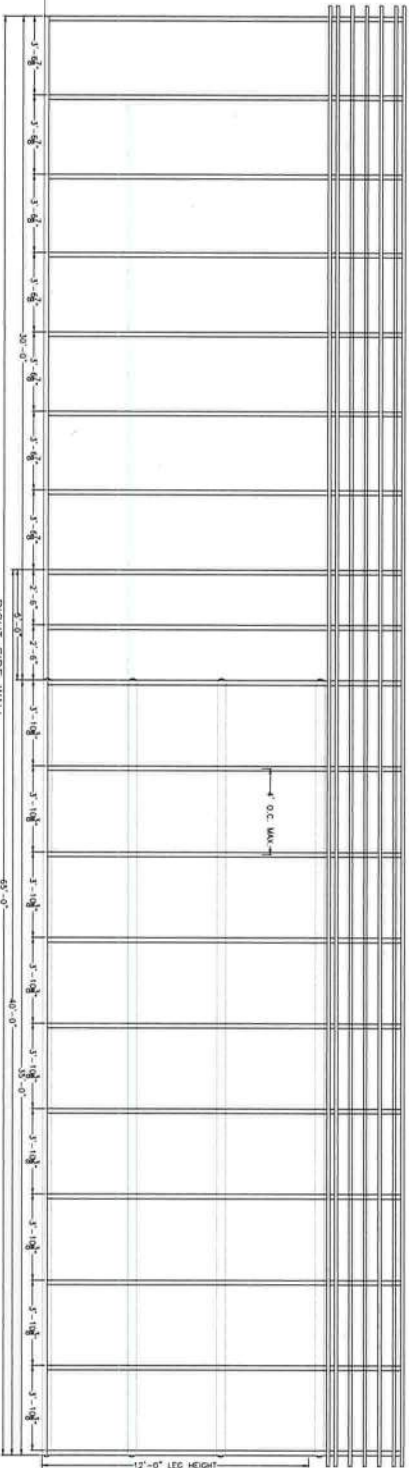
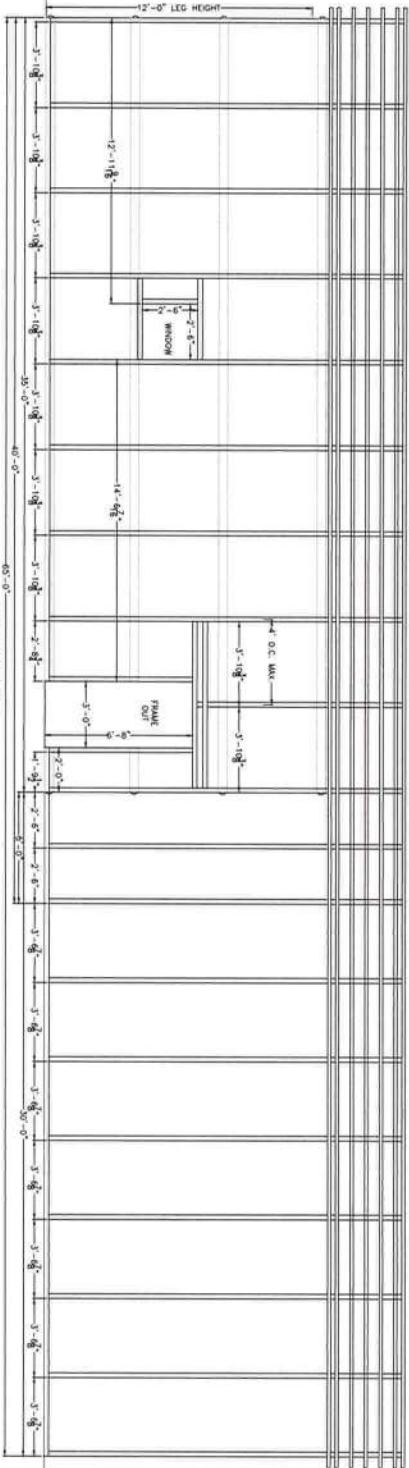
DATE	12/2/22
LOCATION	165 NW Open Ct, Lake City
SIZE	65' L. X 52' W. X 12' H

MTB

DATE: 12/2/22  
LOCATION: 165 NW Open Ct, Lake City  
SIZE: 65' L. X 52' W. X 12' H

SIDE FRAMING VIEWS

Sheet: CA-3 OF 6  
Matthew T. Bolden P.E.  
Florida License #64608



THIS ITEM HAS BEEN DIGITALLY SIGNED AND SEALED BY MATTHEW BALDWIN, P.E. ON 12/2/2022.  
PRINTED COPIES OF THIS DOCUMENT ARE NOT CONSIDERED SIGNED AND SEALED AND THE SHA  
AUTHENTICATION CODE MUST BE VERIFIED ON ANY ELECTRONIC COPIES.



CODE INFORMATION

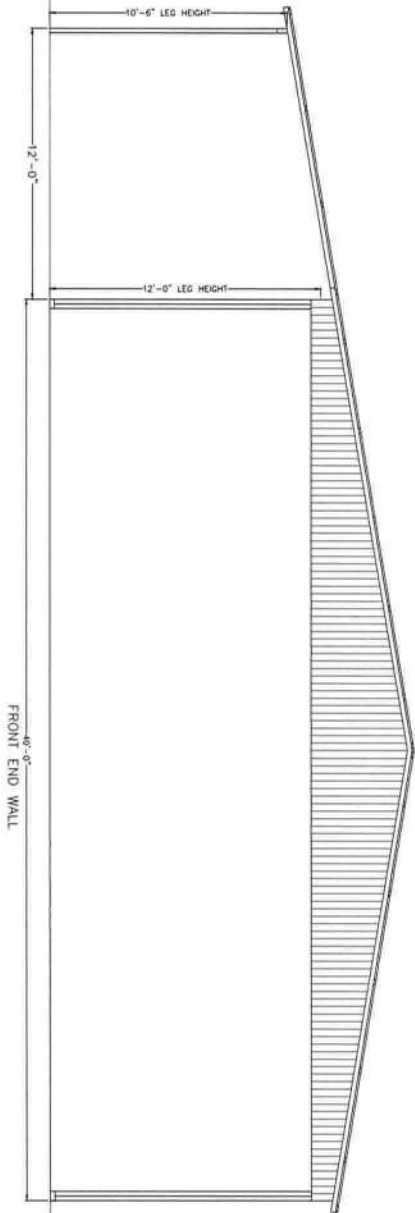
CODE VERSION	IBC 2020 7th Edition
MANUFACTURER	ASCE 7-16
BUILDING TYPE	CARPORTS ANYWHERE
CONSTRUCTION TYPE	UTILITY STRUCTURE
RISK CATEGORY	I-B
FIRE PROTECTION	NONE
FIRE SUPPRESSION SYSTEM	NONE
OCCUPANCY	UTILITY, U
WIND SPEED	V-MH-140mph
EXPOSURE	B
ENCLOSURE	ENCLOSED/OPEN
INTERNAL PRESSURE COEFF.	+/- 0.18/0.0
IMPORTANCE FACTOR	1.0
ROOF DEAD LOAD	10PSF
ROOF LIVE LOAD	20PSF OR 300lb P.L.
FLOOR DEAD LOAD	10PSF
FLOOR LIVE LOAD	50PSF
TRAINING OF WALLS/FLOOR/ROOF	N/A
MODULES PER BUILDING	1
HURRICANE PROTECTION USAGE	NO
HURRICANE SHELTER USAGE	NO
SQUARE FOOTAGE	3,080 SQ. FT.

REV	DESCRIPTION	DATE	BY
-----	-------------	------	----

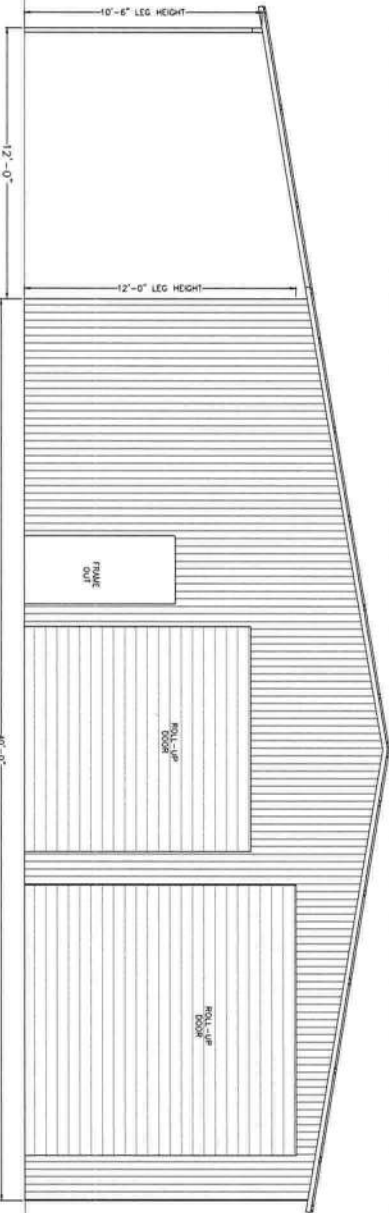
1	REVISIONS		
2			
3			
4			
5			
6			
7			
8			
9			
10			

SIGNATURE	MTB
DATE	12/2/22
LOCATION	165 NW Open Ct, Lake City
SIZE	65' L x 52' W x 12' H

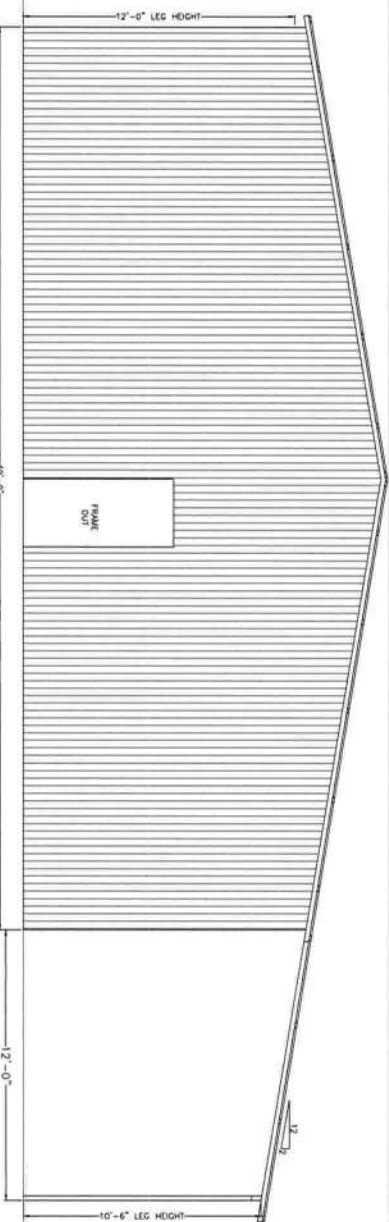
TITLE	END VIEWS
Sheet:	CA-4 OF 6
Matthew T. Bolden, P.E.	
Florida License #64608	



FRONT END WALL



MID END WALL



REAR END WALL

THIS ITEM HAS BEEN DIGITALLY SIGNED AND SEALED BY MATTHEW BALDWIN, P.E. ON 12/2/2022.  
PRINTED COPIES OF THIS DOCUMENT ARE NOT CONSIDERED SIGNED AND SEALED AND THE SHA  
AUTHENTICATION CODE MUST BE VERIFIED ON ANY ELECTRONIC COPIES.





CODE INFORMATION	
CODE VERSION	IBC 2010 7th Edition
MANUFACTURER	CARBONIX ANYWHERE
BUILDING TYPE	UTILITY STRUCTURE
CONSTRUCTION TYPE	I-B
RISK CATEGORY	1
FIRE PROTECTION	NONE
FIR SUPPRESSION SYSTEM	NONE
OCCUPANCY	UTILITY U
WIND SPEED	Vel=140mph B
ENCLOSURE	ENCLOSED/OPEN
INTERNAL PRESSURE COEFF.	+/- 0.18/0.0
IMPORTANCE FACTOR	1.0
ROOF DEAD LOAD	10PSF
ROOF LIVE LOAD	20PSF OR 300lb P.L.
FLOOR DEAD LOAD	10PSF
FLOOR LIVE LOAD	50PSF
R RAINING OF WALLS/FLOOR ROOF	N/A
MODULUS PER BUILDING	1
HURRICANE PROTECTION USAGE	NO
HURRICANE SHELTER USAGE	NO
SQUARE FOOTAGE	3,080 SQ. FT.

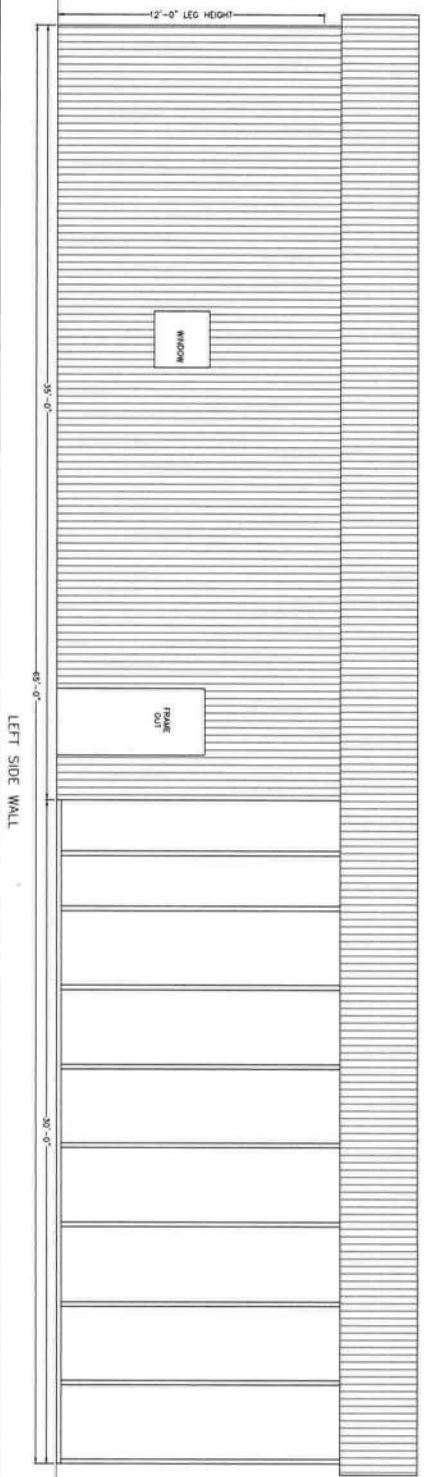
[illegible]

ORDER BY:	MTB
DATE:	12/2/22
LOCATION:	165 NW Open Cl. Lake City
SIZE:	65'L X 52'W X 12'H

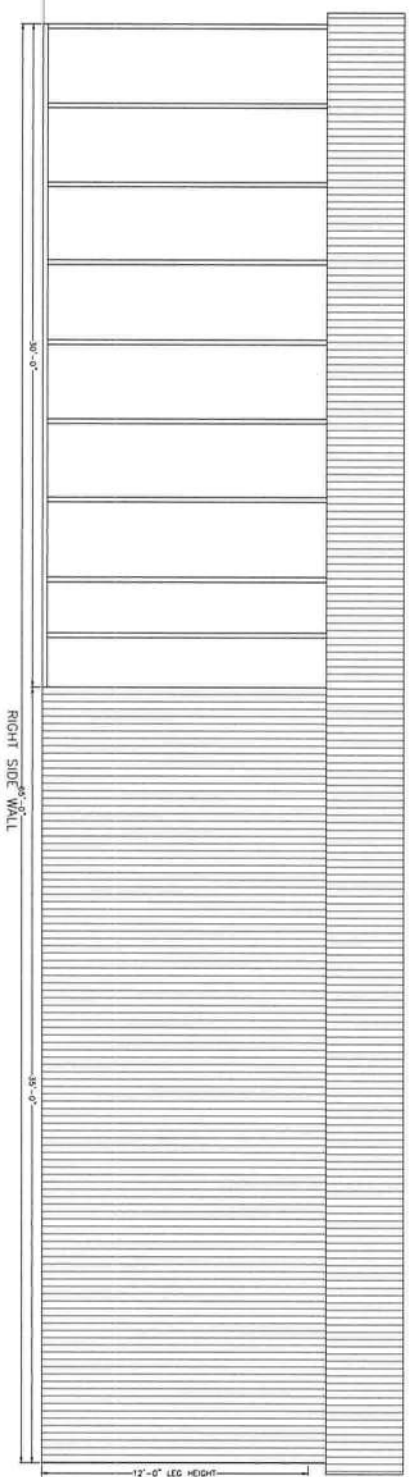
SIDE VIEWS

Matthew T. Baldwin P.E.  
Florida License #64608

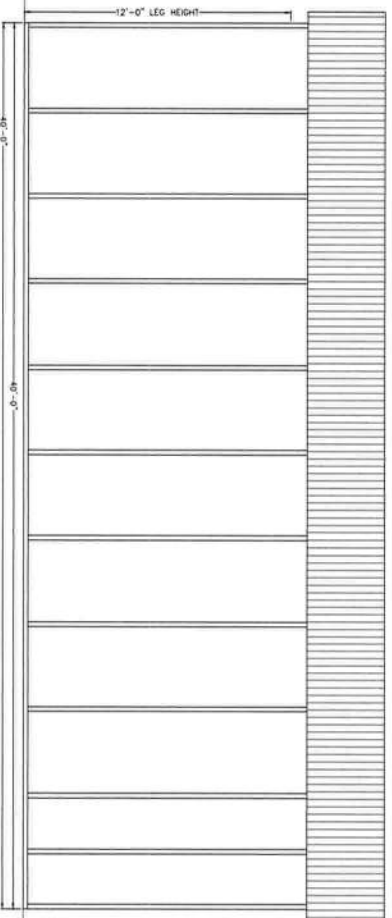
Sheet: CA-5 OF 6



LEFT SIDE WALL

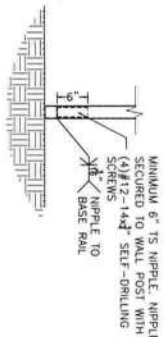


RIGHT SIDE WALL

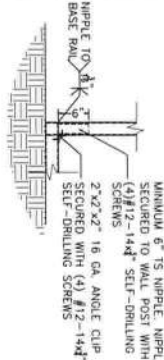


LEFT SIDE LEAN-TO WALL

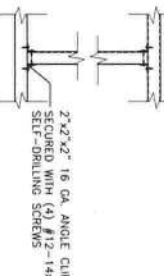
THIS ITEM HAS BEEN DIGITALLY SIGNED AND SEALED BY MATTHEW BALDWIN, PE, ON 12/2/2022.  
PRINTED COPIES OF THIS DOCUMENT ARE NOT CONSIDERED SIGNED AND SEALED AND THE SHA  
AUTHENTICATION CODE MUST BE VERIFIED ON ANY ELECTRONIC COPIES.



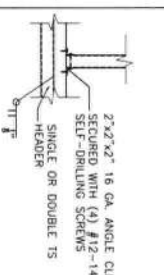
POST TO BASE RAIL CONNECTION



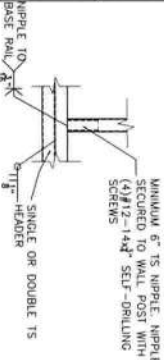
END POST TO BASE RAIL CONNECTION



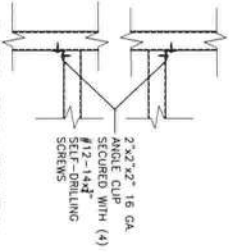
INTERMEDIATE POST TO HEADER/BASE RAIL/OR WINDOW RAIL DETAIL



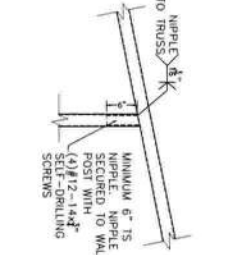
HEADER CONNECTION DETAIL OPTION 1



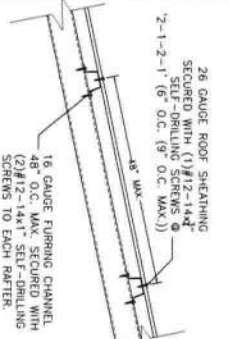
HEADER CONNECTION DETAIL OPTION 2



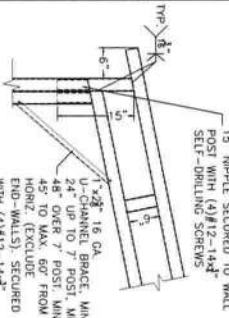
NON-STRUCTURAL HEADER OR WINDOW RAIL TO POST DETAIL



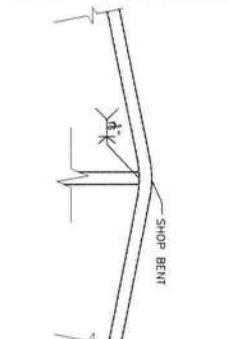
POST TO TRUSS CONNECTION



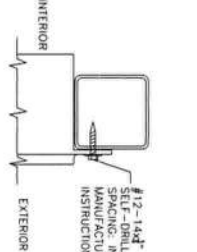
WALL/ROOF PANEL CONNECTION VERTICAL SHEATHING OPTION



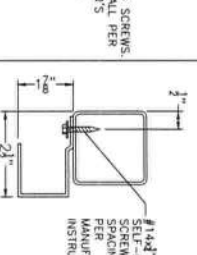
3'-5-1' BOX RAFTER TO POST CONNECTION DETAIL



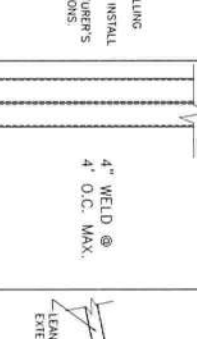
RAFTER CONNECTION DETAIL



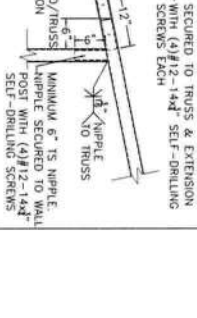
DOOR FRAME TO POST CONNECTION



ROLL-UP DOOR TO POST CONNECTION



DOUBLE POST/DOUBLE BASE RAIL CONNECTION



LEAN-TO TO TRUSS CONNECTION

Enclosed Design Pressures - 140 mph Basic Wind Speed					
Zone ('a' dimension = 3.5ft)					
Roof			Wall		
1	2n	2r	2e	3r	3e
9.6	9.6	9.6	10.9	10.9	12.6
-9.8	-31.0	-24.8	-9.8	-46.5	-39.4
Open Design Pressures - 140 mph Basic Wind Speed					
Zone ('a' dimension = 3ft)					
Roof			Wall		
1	2n	2r	2e	3r	3e
9.6	9.6	9.6	9.6	9.6	9.6
-9.6	-24.5	-18.3	-9.6	-47.7	-39.1

APPROVED PRODUCTS		APPROVAL NO.
ROOF SHEATHING	Corports Anywhere Hompton Rib Roof Panel	FL27402.1
WALL SHEATHING	Corports Anywhere Hompton Rib Wall Panel	FL27403.1
ROLL-UP DOOR	JANUS INTERNATIONAL CORPORATION SERIES 3652	FL14425.1
WINDOW	SILVER LINE BUILDING PRODUCTS CORP. V1 SERIES/70 SERIES (2127)	FL14911.5

THIS ITEM HAS BEEN DIGITALLY SIGNED AND SEALED BY MATTHEW BALDWIN, PE, ON 12/27/2022. PRINTED COPIES OF THIS DOCUMENT ARE NOT CONSIDERED SIGNED AND SEALED AND THE SHA AUTHENTICATION CODE MUST BE VERIFIED ON ANY ELECTRONIC COPIES.



CODE INFORMATION	
CODE VERSION	IBC 2020 7th Edition
MANUFACTURER	ASCE 7-16
BUILDING TYPE	CARPORTS ANYWHERE
CONSTRUCTION TYPE	UTILITY STRUCTURE
RISK CATEGORY	I-B
FIRE PROTECTION	NONE
FIRE SUPPRESSION SYSTEM	NONE
OCCUPANCY	UTILITY, U
WIND SPEED	140-160 mph
EXPOSURE	B
ENCLOSURE	ENCLOSED/OPEN
INTERNAL PRESSURE COEFF.	+/- 0.18/0.0
IMPORTANCE FACTOR	1.0
ROOF DEAD LOAD	20PSF OR 300lb P.L.
ROOF LIVE LOAD	10PSF
FLOOR DEAD LOAD	50PSF
FLOOR LIVE LOAD	N/A
TRAILING OF WALLS/FLOOR/ROOF	N/A
MODULUS PER BUILDING	1
HURRICANE PROTECTION USAGE	NO
SQUARE FOOTAGE	3,080 SQ. FT.

REV	DESCRIPTION	DATE	BY
1	ISSUED	12/27/22	MTB
2	REVISIONS		

DETAILS	
DATE	12/27/22
LOCATION	165 NW Open Ct. Lake City
SIZE	65' L. x 52' W. x 12' H.

Matthew T. Baldwin, P.E.  
Florida License #54508  
CA-6 OF 6