

Amarr®
GARAGE DOORS

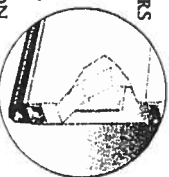
BEST

WEATHERGUARD™ SERIES
FEATURING OUR DuraSafe System



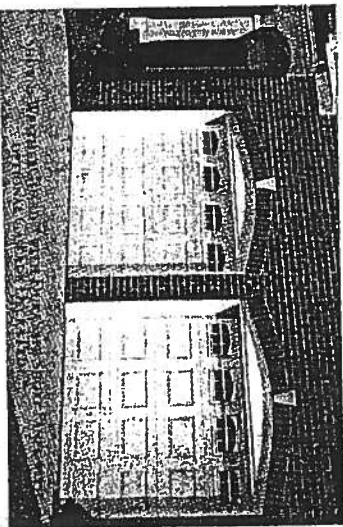
WEATHERGUARD PLUS™ WITH DuraSafe

THE WEATHERGUARD PLUS OFFERS DISCERNING HOMEOWNERS A MASTERFUL COMBINATION OF PREMIUM FEATURES. SUPERIOR TRIPLE-LAYER CONSTRUCTION, 2" (5.1 CM) POLYSTYRENE INSULATION, AN R-VALUE OF 8.34, AND UNMATCHED BEAUTY PUT THE WEATHERGUARD PLUS AT THE TOP OF ITS CLASS.



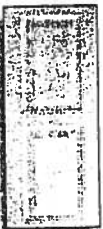
WEATHERGUARD™ WITH DuraSafe

TOP-QUALITY TRIPLE-LAYER CONSTRUCTION AND 1 3/8" (3.5 CM) POLYSTYRENE INSULATION MAKE OUR WEATHERGUARD STEEL DOOR STRONG, QUIET, AND ENERGY EFFICIENT. FEATURING AN R-VALUE OF 5.73, THE WEATHERGUARD IS THE PERFECT ADDITION TO YOUR HOME FOR YEARS OF TROUBLE FREE SERVICE AND GREAT LOOKS.



DESIGN ELEMENTS

THE WEATHERGUARD SERIES DOORS ARE AVAILABLE WITH A RAISED SHORT, RAISED LONG, OR FLUSH PANEL DESIGN IN YOUR CHOICE OF FOUR COLORS.*



RAISED SHORT PANEL



RAISED LONG PANEL



FLUSH PANEL



Bottom Seal
NEW ALUMINUM BOTTOM SEAL MEANS EASY AND FAST INSTALLATION AND MAINTENANCE, AS WELL AS A BETTER SEAL AGAINST THE ELEMENTS.



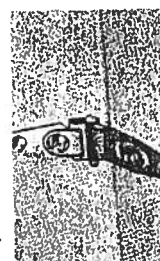
Bottom Bracket
NEW TAMPER RESISTANT BOTTOM BRACKET HELPS PREVENT ACCIDENTS, YET ALLOWS FOR EASIER MAINTENANCE/CHANGE WITHOUT DISASSEMBLY. FULL LENGTH ROLLER TUBE PREVENTS SLIP-OUTS.



Door Sections
THE SECTION JOINT OF THE FUTURE: TODAY, NEW SECTION PROFILE ASSURES PINCH RESISTANCE BOTH INSIDE AND OUT, EXCEEDING INDUSTRY STANDARDS - NEITHER FINGERS NOR WEATHER GETS IN.



Center Hinge
FLUSH MOUNT INBOARD DESIGN CENTER HINGES PROVIDE PINCH RESISTANT PROTECTION AND A LOW PROFILE CLEAN LOOK ON THE INSIDE OF THE DOOR.



End Hinge
WITH MOST OF ITS ACTION HIDDEN INSIDE THE DOOR, OUR RE-ENGINEERED END HINGES LEAVE NO ROOM FOR EVEN THE SMALLEST FINGERS.

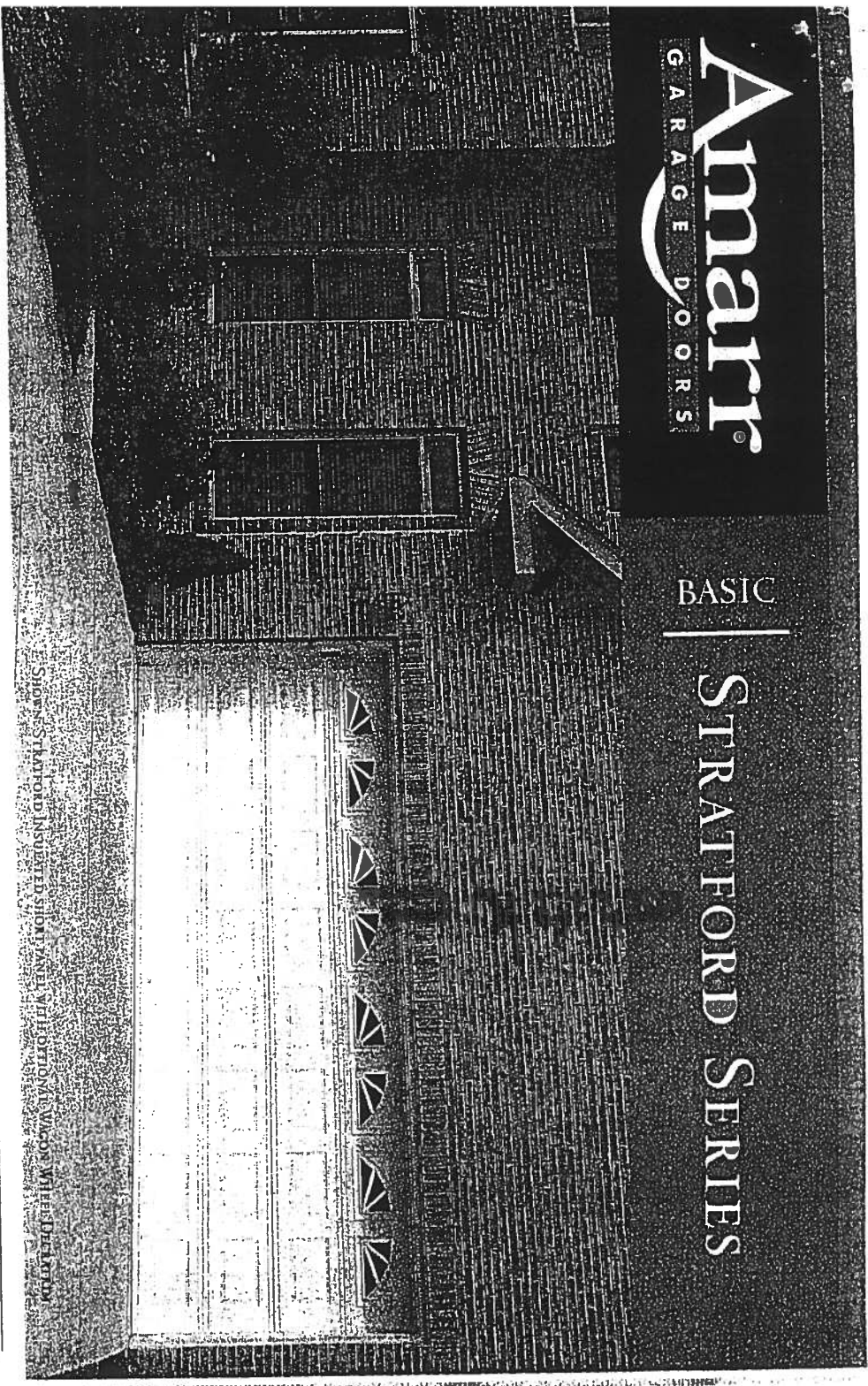


AMARR DURASAFE DOORS UNDER 8'9" WILL BE SUPPLIED WITH DURASAFE HARDWARE. DASMA STANDARDS FOR PINCH-RESISTANCE DO NOT APPLY TO DOORS OVER 8' HIGH SINCE THE POTENTIAL PINCH POINTS ARE ABOVE TYPICAL CASING HEIGHTS. AMARR DOORS OVER 8'9" ARE SUPPLIED WITH CONVENTIONAL HARDWARE. THE BOTTOM BRACKET, DOOR SECTIONS, CENTER HINGE AND END HINGE SHOWN ABOVE ARE PATENTED. DOORS SHOWN ARE ELECTRICALLY OPERATED. NON-ELECTRICALLY OPERATED DOORS SHOULD HAVE EXTERIOR AND INTERIOR LIFT HANDLES ATTACHED TO THE DOOR.

Amarr®
GARAGE DOORS

BASIC

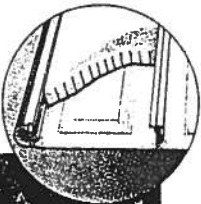
STRATFORD SERIES



SHOWS STRATFORD INSULATED SHORT PANEL WITH OPTIONAL WAGON WHEEL DESIGN

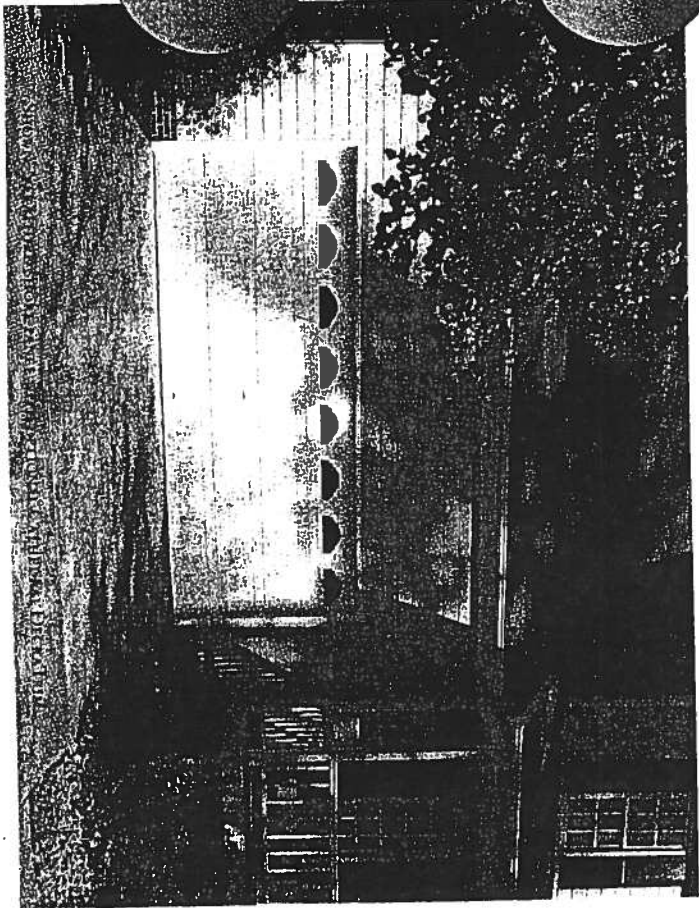
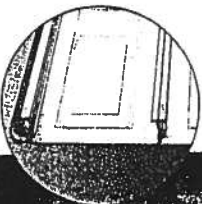
STRATFORD INSULATED

THE 2" (5.1 CM) THICK STRATFORD INSULATED PROVIDES HOMEOWNERS EXCELLENT THERMAL PROTECTION AND HANDSOME GOOD LOOKS. FEATURES INCLUDE DOUBLE-LAYER CONSTRUCTION OF STURDY 25-GAUGE STEEL, AND 1 7/16" (3.7 CM) POLYSTYRENE INSULATION WITH LAMINATED BACKING AND AN R-VALUE OF 5.65.



STRATFORD

A SUPERLATIVE ADDITION TO ANY HOME, THE STRATFORD'S DURABLE SINGLE-LAYER CONSTRUCTION, 25-GAUGE STEEL, AND ATTRACTIVE DESIGN PROVIDE HOMEOWNERS WITH EXCEPTIONAL VALUE.



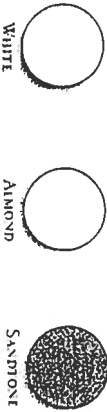
SHOWS STRATFORD INSULATED SHORT PANEL WITH OPTIONAL WAGON WHEEL DESIGN

DESIGN ELEMENTS

THE STRATFORD SERIES DOORS ARE AVAILABLE WITH A RAISED SHORT PANEL DESIGN IN YOUR CHOICE OF THREE COLORS.*



RAISED SHORT PANEL



* ACTUAL PAINT COLORS MAY VARY FROM SAMPLES SHOWN