

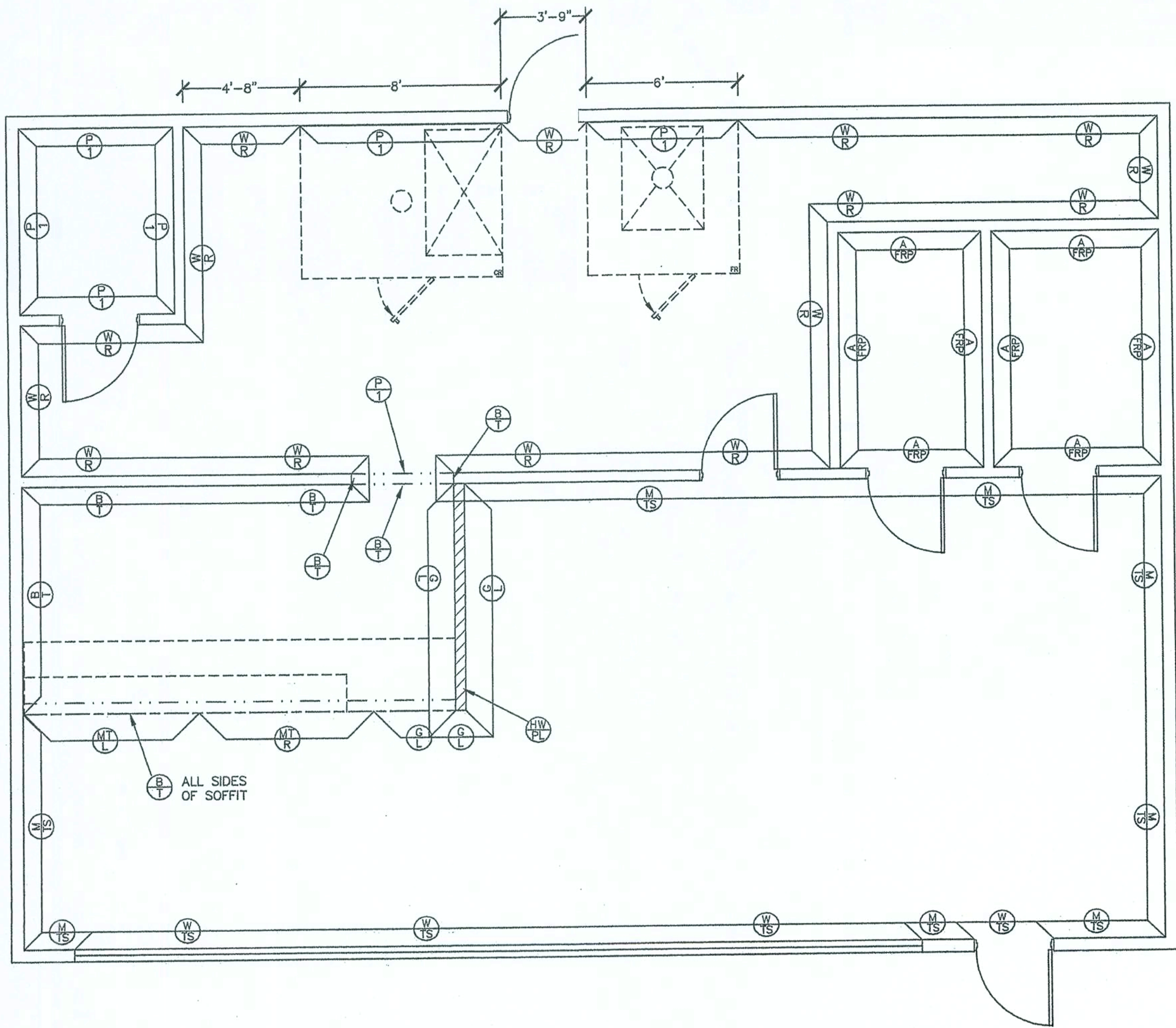
TUSCANY DECOR CALCULATION

NOTE: THE SUBWAY STORE DESIGN DEPARTMENT WILL NOT CCEPT RESPONSIBILITY FOR ANY INACCURACIES. THE CALCULATIONS PROVIDED BELOW MUST BE VERIFIED BY THE G.C. AND FRANCHISE OWNER BEFORE ANY ORDER FOR THESE MATERIALS IS ACCEPTED AND PLACED.

QUANTITIES	CALCULATION WORKSHEET
CUSTOMER AREA 1) (25) YARDS CITYSCAPE MURAL 2) (25) YARDS OF TUSCAN STUCCO WALL COVERING 3) (73) FEET OF UPPER DECORATIVE MOLDING 4) (73) FEET OF LOWER CHAIR RAIL MOLDING 5) (16) YARDS OF QUENTIN WALLCOVERING (OR OPTIONAL RUSTIC BRICK WALLCOVERING) 6) (N/A) ABOVE CITYSCAPE MURAL (OPTIONAL) FEET OF HARDWOOD CROWN MOLDING (AT CORNER WHERE WALL AND CEILING MEET) 7) (N/A) FEET OF HARDWOOD CROWN MOLDING (FINISH CAP ON STRIP LIGHTING SHELF)	1) M/TS + S/M + 1G DIVIDED BY 3. 2) M/TS + T/S + 1G DIVIDED BY 3 3) M/TS + S/M + 1G 4) M/TS + T/S + 1G 5) (CEILING HEIGHT - 7'-6") X (M/TS + S/M + (Q/WC OR B/T IN CUSTOMER AREA ONLY)) + 5% DIVIDED BY 2 6) M/TS + S/M (+ WTS IF WINDOWS NOT TO CEILING) + 10% 7) TOTAL LENGTH OF WALLS WHERE FLUORESCENT STRIP LIGHTING TO BE INSTALLED + 10%
SERVICE AREA 8) (2) 4' X 12' SHEETS IRISH MAPLE LAMINATE * 9) (5) 12' T-MOLDING STRIPS * 10) (37) YARDS OF BRICK TEXTURED WALL COVERING 11) (1) RIGHT (1) LEFT VEGETABLE MOSAIC TILE 12) (N/A) (OPTIONAL) FEET OF COPPER CORNICE TRIM	8) G/L (ONLY ON 36" & 48" HIGH WALLS) + 5% DIVIDED BY 12 9) (G/L ON 36" HIGHWALLS X 2) + (G/L ON 48" HIGH WALLS X 3) + 5% DIVIDED BY 12 10) CEILING HEIGHT X T + 5% DIVIDED BY 12 12) TOTAL LENGTH OF CUSTOMER SIDE OF HEADERWALL(S) OVER SERVICE AREA + 5%.
BACKROOM 13) (28) MARLITE F.R.P. WHITE (ALMOND OPTIONAL IF PERMITTED BY HEALTH/BUILDING CODE) 14) (27) PVC DIVISION MOLDING 15) (8) PVC INSIDE CORNER 16) (2) PVC OUTSIDE CORNER 17) (12) PVC CAP MOLDING	13) W/R + 5% DIVIDED BY 4 14) PANEL COUNT FRQ #13 LESS 1 15) COUNT ALL INSIDECORNERS WHERE W/R MEET 16) COUNT ALL OUTSIDE CORNERS WHERE W/R MEET 17) COUNT ALL EDGESWHERE W/R BEGINS & ENDS & DOORWAYS.
PUBLIC ACCESS RESTROOMS 18) (18) MARLITE F.R.P. ALMOND 19) (17) PVC DIVISION MOLDING 20) (8) PVC INSIDE CORNER 21) (N/A) PVC OUTSIDE CORNER 22) (4) PVC CAP MOLDING 23) (N/A) YARDS OF TUSCAN STUCCO IN RESTROOM(S)	18) A/FRP + 5% DIVIDED BY 4 19) PANEL COUNT FRQ #18 LESS 1 20) COUNT ALL INSIDECORNERS WHERE A/FRP MEET 21) COUNT ALL OUTSIDE CORNERS WHERE A/FRP MEET 22) COUNT ALL EDGESWHERE A/FRP BEGINS & ENDS & DOORWAYS. 23) HEIGHT FROM TOPOF WALL TILE TO CEILING (48"-52" A.F.F.) X RR/2 + 5% DIVIDED BY 8.

* CALCULATIONS ARE FOR IRISH MAPLE LAMINATE AND ALUMINUM T-MOLDINGAPPLIED TO 36" AND 48" HIGH WALLS. LAMINATE AND T-MOLDING, WHEN AFFIXED DIRECTLY TO DUKE FRONT COUNTER, IS SHIPPED READY TO INSTALL BY DUKE MANUFACTURING.

NOTE: THESE CALCULATIONS DO NOT INCLUDE THE MATERIALS NEEDED TO DECOR THE AREA ABOVE OR BELOW THE WINDOWS.



GENERAL NOTES:

- CEILING HEIGHT IS 10'
- ELECTRICAL OUTLET HEIGHTS MEASURED TO BOTTOM OF BOX.
- ONE ELECTRICAL JUNCTION BOX TO BE LOCATED IN CEILING ABOVE EACH WINDOW.
- STORE DESIGNED WITH CONTOUR SEATING. SHOWN ON PLAN AS SINGLES NOT GROUPS.
- CUNO MODEL SWG3-PLUS WATER FILTRATION SYSTEM IS REQUIRED IN ALL NEW STORES THAT DISPENSE BEVERAGES. THE RECOMMENDED PLACEMENT FOR INSTALLATION IS MOUNTED TO SODA SYRUP RACK BY COCA-COLA. SECONDARY PLACEMENT OPTION IS MOUNTED ON THE BACKROOM WALL. THIRD INSTALLATION OPTION IS MOUNTING INSIDE THE FRONT BEVERAGE COUNTER WHEN SPACE LIMITATIONS OCCUR. REQUIRED: 1/2" INCOMING WATER LINE FEED WITH 1/2" BALL VALVE SHUTOFF AND 1/2" FPT CONNECTION.
- MINIMUM 110 VOLT, 20 AMP ELECTRICAL SERVICE TO SUPPORT THE CARBONATOR AND WATER BOOSTER (MUST BE DEDICATED CIRCUIT).
- PROMOTIONAL FLOOR STAND (MFR. TRANS WORLD) REQUIRED IN CUSTOMER AREA AT POINT OF ORDER (PREFERRED PLACEMENT).
- 14 1/2" X 10" BASE, 54" OVERALL HEIGHT.
- EXIT LIGHTS INSTALLED BY G.C. PER LOCAL CODE.
- EMERGENCY LIGHTS INSTALLED BY G.C. PER LOCAL CODE.
- EXTINGUISHERS, SMOKE AND FIRE DETECTION SYSTEMS INSTALLED BY G.C. PER LOCAL CODE.
- LABOR & MATERIAL SUPPLIED BY G.C. UNLESS OTHERWISE NOTED.
- ALL DIMENSIONS TO BE VERIFIED BY G.C. ON SITE.
- DECOR SPECIFICATIONS ARE TO BE SUBWAY'S "TUSCANY" SCHEME.

WALL FINISH LEGEND (TUSCANY DECOR)

*SEE TUSCANY BACK-UP SHEET 1 OF 3 FOR PROPER INSTALLATION OF WALLFINISHES IN CUSTOMER AND SERVICE AREAS.
(SEE TUSCANY SUPPLEMENTAL TILE BACK-UP SHEET WHEN APPLICABLE)

SYMBOL	DESCRIPTION	MANUFACTURER	SUPPLY	INST.	NOTES:
(M/TS)	SUBWAY MURAL	MODERNISTIC/SUNGLOW	D.A.I.	G.C.	VINYL WALLCOVERING (UPPER CHAIR RAIL MOLDING AND QUENTIN OR RUSTIC BRICK WALLCOVERING AS REQUIRED)
(M/TS)	TUSCAN STUCCO WALLCOVERING	MODERNISTIC/SUNGLOW	D.A.I.	G.C.	VINYL WALLCOVERING (WITH LOWER CHAIR RAIL MOLDING)
(W/F)	WINDOW FRAME		G.C.	G.C.	PAINT SHERWIN WILLIAMS #SW6356 COPPER MOUNTAIN. (CITYSCAPE MURAL, UPPER CHAIR RAIL MOLDING AND QUENTIN OR RUSTIC BRICK WALLCOVERING AS REQUIRED)
(M/TS)	TUSCAN STUCCO WALLCOVERING	MODERNISTIC/SUNGLOW	D.A.I.	G.C.	VINYL WALLCOVERING (WITH LOWER CHAIR RAIL MOLDING AS REQUIRED)
(R)	RUSTIC BRICK WALL COVERING	MODERNISTIC/SUNGLOW	D.A.I.	G.C.	VINYL WALLCOVERING
(L)	CABINET/WALL LAMINATE	WILSONART	G.C.	G.C.	IRISH MAPLE (#10862-60) - INSTALL GRAIN HORIZONTALLY
(MT)	MOSAIC TILE (RIGHT)	VACUFORM/WILSONART	D.A.I.	G.C.	GRAPHIC IMAGES (SEE TUSCANY BACK-UP SHEET FOR DETAILS AND OPTIONS) WITH WILSONART #10745-60 FONTHILL PEAR BORDER AND 4" LIGHTED PURSE RAIL
(MT)	MOSAIC TILE (LEFT)	VACUFORM/WILSONART	D.A.I.	G.C.	GRAPHIC IMAGES (SEE TUSCANY BACK-UP SHEET FOR DETAILS AND OPTIONS) WITH WILSONART #10745-60 FONTHILL PEAR BORDER AND 4" LIGHTED PURSE RAIL
(W/C)	WALL CAPS	G.C.	G.C.	G.C.	HARDWOOD PLANK (STAINED MINWAX #235 CHERRY) AND POLYURETHANED WITH MINWAX FAST DRYING CLEAR SATIN)
(P)	FRP OR PAINTED WALLS	MARLITE/G.C.	DAI/GC	G.C.	WHITE FRP PANELS OR OFF-WHITE SEMI-GLOSS PAINT
(W)	FIBERGLASS REINFORCED POLYESTER PANELS (FRP)	MARLITE	D.A.I.	G.C.	FRP PANELS - WATER RESISTANT COVERING. WHITE OR *ALMOND (*ALMOND OPTION ONLY IF PERMITTED BY HEALTH/BUILDING CODE)
(W)	FIBERGLASS REINFORCED POLYESTER PANELS (FRP)	MARLITE	D.A.I.	G.C.	ALMOND P-118 FRP PANELS - WATER RESISTANT COVERING.

NOTE: ALL WOOD INTERIOR DOORS & CHAIR RAIL MOLDING TO BE STAINED (MINWAX #235 CHERRY) AND POLYURETHANED (MINWAX FAST DRYING CLEAR SATIN).

NOTE: F.R.P. SHOULD BE TO CEILING HEIGHT IN BACKROOM, BUT MUST BE A MINIMUM OF 8'-0" ABOVE FINISHED FLOOR. F.R.P. IN NON-PUBLICLY ACESIBLE RESTROOMS MUST BE FLOOR TO CEILING.

NOTE:

THIS DRAWING IS FURNISHED BY DOCTORS ASSOCIATES INC. ("DAI") D/B/A SUBWAY. RECIPIENT MUST DETERMINE IF THIS DRAWING MUST BE SUBMITTED TO A LICENSED ARCHITECT OR SIMILAR PROFESSIONAL UNDER FEDERAL, STATE OR LOCAL LAW. ANY CHANGES MUST BE APPROVED BY DAI.

DO NOT SCALE DRAWING. WRITTEN DIMENSIONS TAKE PRECEDENCE OVER SCALED DIMENSIONS, AND SHALL BE VERIFIED IN THE FIELD BY THE GENERAL CONTRACTOR AND/OR FRANCHISEE/OWNER. ANY DISCREPANCY IN DIMENSIONS SHALL BE BROUGHT TO THE IMMEDIATE ATTENTION OF DAI'S AREA DEVELOPMENT AGENT OR DESIGNATED FIELD REPRESENTATIVE.

THE GENERAL CONTRACTOR AND EACH SUB-CONTRACTOR SHALL MAKE HIS OWN INSPECTIONS AND MEASUREMENTS. DAI AND SUBWAY SHALL NOT BE HELD RESPONSIBLE FOR THE ACCURACY OF DIMENSIONS AND FOR ERRORS AND OMISSIONS IN THE DRAWINGS IF WRITTEN CONFIRMATION HAD NOT BEEN RECEIVED BY DAI'S STORE DESIGN DEPARTMENT.

THIS DRAWING AND THE INFORMATIONAL CONTENT HEREOF IS THE CONFIDENTIAL PROPERTY OF SUBWAY AND DAI AND IS PROVIDED SOLELY FOR THE USE OF AUTHORIZED FRANCHISEES, THEIR AGENTS AND CONTRACTORS. RECIPIENT AGREES NOT TO REPRODUCE, COPY, USE OR TRANSMIT THIS DRAWING AND/OR ITS INFORMATIONAL CONTENT, IN WHOLE OR IN PART, OR ALLOW SUCH ACTION BY OTHERS FOR ANY PURPOSE, EXCEPT WITH THE WRITTEN PERMISSION OF DAI ACTING FOR SUBWAY. RECIPIENT FURTHER AGREES TO SURRENDER THIS DRAWING AND ANY PERMITTED COPIES HEREOF UPON DEMAND.

STORE MUST BE CONSTRUCTED AS DESIGNED IN THESE FLOOR PLANS SUBJECT TO FEDERAL, STATE AND LOCAL LAWS. RECIPIENT IS RESPONSIBLE FOR ENSURING COMPLIANCE WITH ALL LAWS. IF MODIFICATIONS ARE NECESSARY, PLEASE CONTACT DAI'S DESIGN DEPARTMENT FOR WRITTEN APPROVAL OF THE REQUIRED CHANGES.

©2001 DOCTORS ASSOCIATES, INC.

SUBWAY		WORLD HEADQUARTERS 325 BIC DRIVE MILFORD, CT 06460 (203) 877-4281 (800) 888-4848	
FRANCHISEE:	MATT KARLTM	STORE #	38233
DEVELOPMENT AGENT:	JIM LENHARD	DESIGNED BY:	MATT HASBROUCK DATE: NOV. 8, 2005
STORE ADDRESS:	1-75 & SR47 LAKE CITY, FL	NO.	3 OF 3
DRAWN BY:	MH	REVISIONS	BY DATE
REVIEWED BY:			
SCALE:	1/4"=1'		

OFFICE COPY

FLOOR FINISH LEGEND- TUSCANY DECOR (PERIMETER GREEN PATTERN)

TILE							DESCRIPTION
NO.	AREA OF STORE	MANUFACTURER	SUPPLIER	INST.	SQ/FT		
①	CUSTOMER AREA	CROSSVILLE	G.C.	G.C.	54	VERANDA STONE POMPEII SERIES; 12" x 12" VS3 ETRUSCAN CLAY WITH DARK GREY OR DARK BROWN GROUT.	
②	CUSTOMER AREA / PUBLIC ACCESSIBLE RESTROOM	CROSSVILLE	G.C.	G.C.	426	VERANDA STONE POMPEII SERIES; 12" x 12" VS56 STONEGROUND WHEAT WITH DARK GREY OR DARK BROWN GROUT.	
③	CUSTOMER AREA	CROSSVILLE	G.C.	G.C.	328	VERANDA STONE POMPEII SERIES; 12" x 12" VS54 APOLLO BRONZE WITH DARK GREY OR DARK BROWN GROUT.	
④	SERVICE/BACKROOM AREA	CROSSVILLE	G.C.	G.C.	666	OPTION #1: VERANDA STONE POMPEII SERIES; 12" x 12" VS56 STONEGROUND WHEAT WITH DARK GREY OR DARK BROWN GROUT.	
		ARMSTRONG	G.C.	G.C.		OPTION #2: 51830 COLOR: COTTAGE TAN 12" x 12" VINYL COMPOSITE TILE CONTINUED THROUGHOUT THE BACKROOM.	

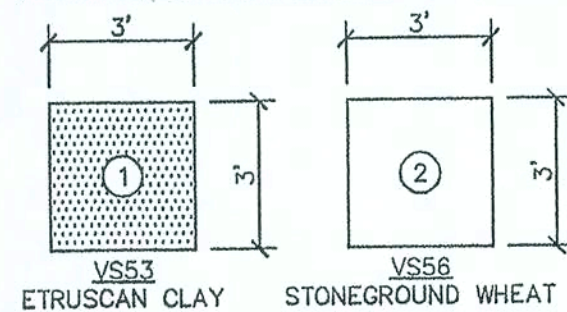
WALL BASE

NOTE: WALL BASE OPTION MUST MATCH FLOOR OPTION LISTED ABOVE IN ALL AREAS OF STORE.

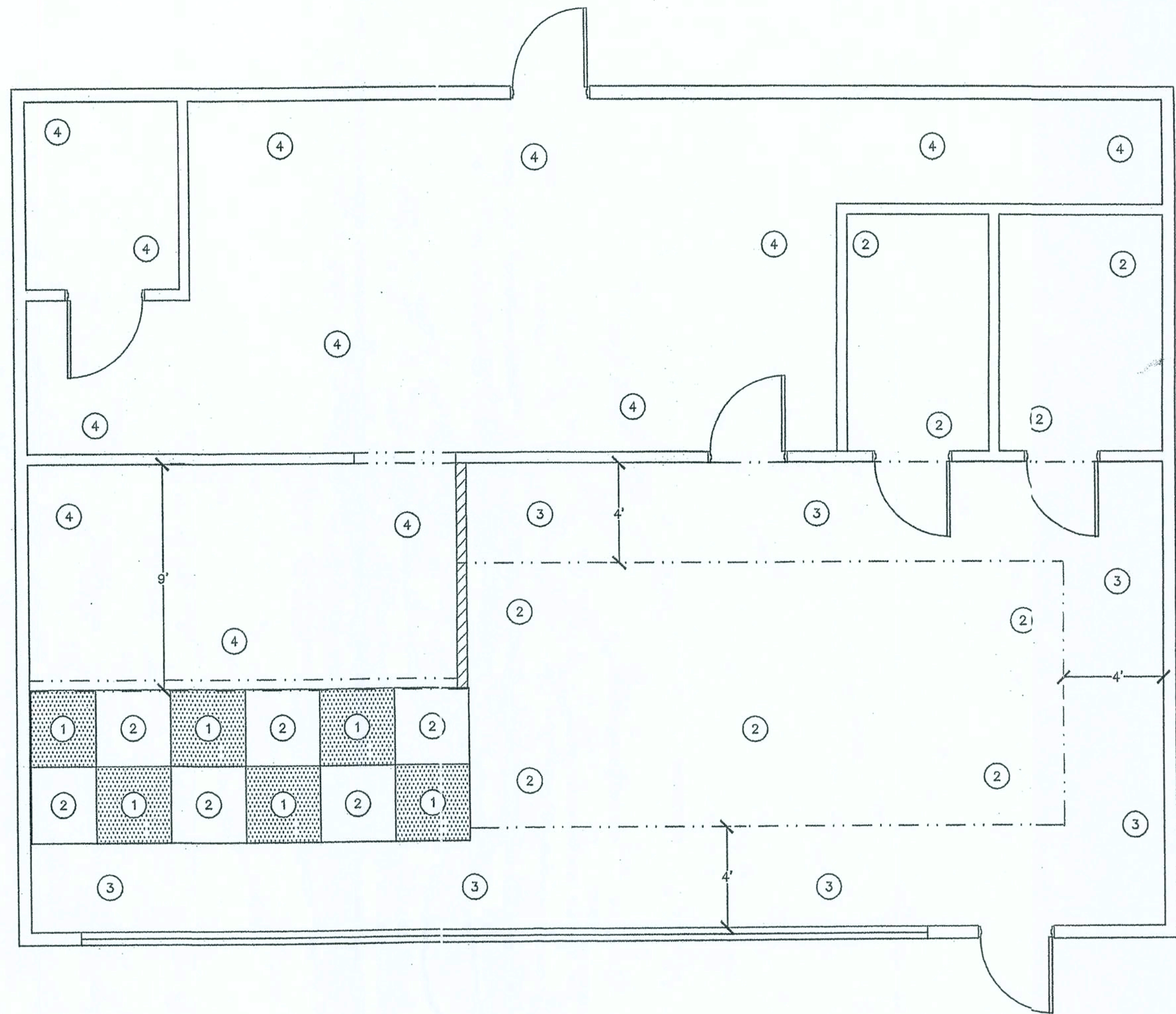
CUSTOMER AREA	CROSSVILLE	G.C.	G.C.	6" X 12" COVE BASE OR 4" X 12" BULLNOSE: VERANDA STONE POMPEII SERIES VS54 APOLLO BRONZE WITH DARK GREY OR DARK BROWN GROUT.
RESTROOM/BACKROOM SERVICE AREA	CROSSVILLE	G.C.	G.C.	6" X 12" COVE BASE OR 4" X 12" BULLNOSE: VERANDA STONE POMPEII SERIES VS56 STONEGROUND WHEAT WITH DARK GREY OR DARK BROWN GROUT.
SERVICE/BACKROOM AREA	ARMSTRONG	G.C.	G.C.	6" BLACK VINYL COVE BASE. (USED WITH VINYL COMPOSITE FLOOR TILE ONLY)

ADDITIONAL COMMENTS:

- FLOORING CONTRACTOR IS RESPONSIBLE FOR OWN DETERMINATIONS ON SUBFLOOR REQUIREMENTS AND TO INSTALL IN ACCORDANCE WITH CODE REQUIREMENTS AND TO INDUSTRY AND MANUFACTURER SPECIFICATIONS.
- THE SQUARE FOOTAGE CALCULATIONS OF THE FLOORING MUST BE VERIFIED BY THE G.C. AND FRANCHISE OWNER. SUBWAY STORE DESIGN DEPARTMENT WILL NOT ACCEPT RESPONSIBILITY FOR ANY INACCURACIES.
- BULLNOSE WALL BASE IS TO BE INSTALLED ON TOP OF THE TUSCAN STUCCO WALL COVERING. 1"-3" OF TUSCAN STUCCO WALL COVERING IS RECOMMENDED TO BE COVERED TO PROVIDE A TIGHT FIT.



FLOOR PATTERNS (CUSTOMER AREA)
USING 12" X 12" CROSSVILLE-POMPEII SERIES TILE



CEILING & LIGHTING LEGEND

2' X 2' DROP CEILING WITH WHITE SPLINES (BRASS TONE OPTIONAL).

SYMBOL	DESCRIPTION	MANUP.	SUPPLY	ORDERED FROM	NO.	NOTES:
☒	2'X2' RECESSED FLUORESCENT FIXTURE	LIGHTOLIER	SPECIALTY STORE LIGHTING	DAI	13	RECESSED FLUORESCENT FIXTURE (SPS2GSVA2FT120SB). USES (2) PL-L40W/35/RS BIAx 2G11 LIGHT BULBS.
☒	2'X2' RECESSED FLUORESCENT FIXTURE W/PARABOLIC LENS	LIGHTOLIER	SPECIALTY STORE LIGHTING	DAI	10	RECESSED FLUORESCENT FIXTURE W/PARABOLIC LENS (DPA2G9LS2FT120SB). USES (2) PL-L40W/35/RS BIAx 2G11 LIGHT BULBS.
☒	WALL ART TRACK LIGHTING (DOUBLE FIXTURE)	LIGHTOLIER	SPECIALTY STORE LIGHTING	DAI	2	(1) PAR-FLEX ADJUSTABLE FIXTURE (9201WH), 50 WATT HALOGEN LAMP (50PAR20/HAL/NFL30). (2) SECTION(S) 48" TRACK. PLACEMENT SHOWN ON PLAN IS APPROXIMATE. REFER TO MFR. INSTRUCTIONS FOR EXACT MOUNTING PLACEMENT.
☒	VINYL DROP-IN		G.C.	G.C.	AS REQD.	2' X 2' DROP-IN PANEL
☒	ACOUSTICAL DROP-IN		G.C.	G.C.	AS REQD.	2' X 2' DROP-IN PANEL
☒	2' X 4' SURFACE MOUNTED LIGHT FIXTURE WITH SEPARATE EXHAUST FAN		G.C.	G.C.	2	STANDARD SURFACE MOUNTED FIXTURE WITH ENERGY SAVING BALLAST AND 40 WATT COOL WHITE TUBES. SEPARATE EXHAUST FAN WITH A 100 CFM AIR EXCHANGE REQUIRED.
☒	PENDANT LIGHT	FORECAST	SPECIALTY STORE LIGHTING	DAI	8	ADJUSTABLE PENDANT LIGHT FIXTURE (FS122) WITH SEPARATE HOLDER (FS110-65). USE 25W/RF FROSTED BULB. WHEN USING BOOTH SEATING A PENDANT LIGHT IS REQUIRED. CENTERED OVER THE TABLE TOP. WHEN INSTALLING PENDANT LIGHTS, IN ANY APPLICATION, THEY SHOULD BE INSTALLED AT A HEIGHT OF 8'-6" (198.1cm) FROM THE FLOOR TO THE BOTTOM OF THE FIXTURE. (A PENDANT STEM KIT IS AVAILABLE THROUGH SPECIALTY STORE LIGHTING FOR USE WITH HIGH CEILING) *RECOMMEND INSTALLING CUSTOMER SEATING BEFORE PENDANT LIGHTS TO ALLOW FOR PRECISE PLACEMENT OF FIXTURES OVER TABLE TOPS.
☒	CEILING FAN	VILLA LIGHTING	DAI	DAI	4	MX2-AS/52CR REGENCY MX-EXCEL WITH 5 CHERRY FINISH BLADES. CAN BE INSTALLED AS DROP STYLE (WITH 6" OR 2" STEM) OR HUGGER (FLUSH) STYLE.

GENERAL NOTES:

- CEILING HEIGHT IS 10'
- ELECTRICAL OUTLET HEIGHTS MEASURED TO BOTTOM OF BOX.
- ONE ELECTRICAL JUNCTION BOX TO BE LOCATED IN CEILING ABOVE EACH WINDOW.
- STORES DESIGNED WITH COUNTER SEATING.
- SHOWN ON PLAN AS SINGLES NOT GROUPS.
- CUNO® MODEL SH3-PLUS WATER FILTRATION SYSTEM IS REQUIRED IN ALL NEW STORES THAT DISPENSE BEVERAGES. THE RECOMMENDED PLACEMENT FOR INSTALLATION IS MOUNTED TO SODA SYRUP RACK BY COCA-COLA. SECONDARY PLACEMENT OPTION IS MOUNTED ON THE BACKROOM WALL. THIRD INSTALLATION OPTION IS MOUNTING INSIDE THE FRONT BEVERAGE COUNTER WHEN SPACE LIMITATIONS OCCUR. REQUIRED: 1/2" INCOMING WATER LINE FEED WITH 1/2" BALL VALVE SHUT-OFF AND 1/2" FET CONNECTION.
- MINIMUM 10 VOLT, 20 AMP ELECTRICAL SERVICE TO SUPPORT THE CARBONATOR AND WATER BOOSTER (MUST BE DEDICATED CIRCUIT).
- PROMOTIONAL FLOOR STAND (MFR. TRANS WORLD) REQUIRED IN CUSTOMER AREA AT POINT OF ORDER (PREFERRED PLACEMENT). 14 1/2" X 10" BASE, 54" OVERALL HEIGHT.
- EXIT LIGHTS INSTALLED BY G.C. PER LOCAL CODE.
- EMERGENCY LIGHTS INSTALLED BY G.C. PER LOCAL CODE.
- EXTINGUISHERS, SMOKE AND FIRE DETECTION SYSTEMS INSTALLED BY G.C. PER LOCAL CODE.
- LABOR & MATERIAL SUPPLIED BY G.C. UNLESS OTHERWISE NOTED.
- ALL DIMENSIONS TO BE VERIFIED BY G.C. ON SITE.
- DECOR SPECIFICATIONS ARE TO BE SUBWAY'S "TUSCANY" SCHEME.

NOTE:

THIS DRAWING IS FURNISHED BY DOCTORS ASSOCIATES INC. ("DAI") D/B/A SUBWAY. RECIPIENT MUST DETERMINE IF THIS DRAWING MUST BE SUBMITTED TO A LICENSED ARCHITECT OR SIMILAR PROFESSIONAL UNDER FEDERAL, STATE OR LOCAL LAW. ANY CHANGES MUST BE APPROVED BY DAI.

DO NOT SCALE DRAWING. WRITTEN DIMENSIONS TAKE PRECEDENCE OVER SCALED DIMENSIONS, AND SHALL BE VERIFIED IN THE FIELD BY THE GENERAL CONTRACTOR AND/OR FRANCHISEE/OWNER. ANY DISCREPANCY IN DIMENSIONS SHALL BE BROUGHT TO THE IMMEDIATE ATTENTION OF DAI'S AREA DEVELOPMENT AGENT OR DESIGNATED FIELD REPRESENTATIVE.

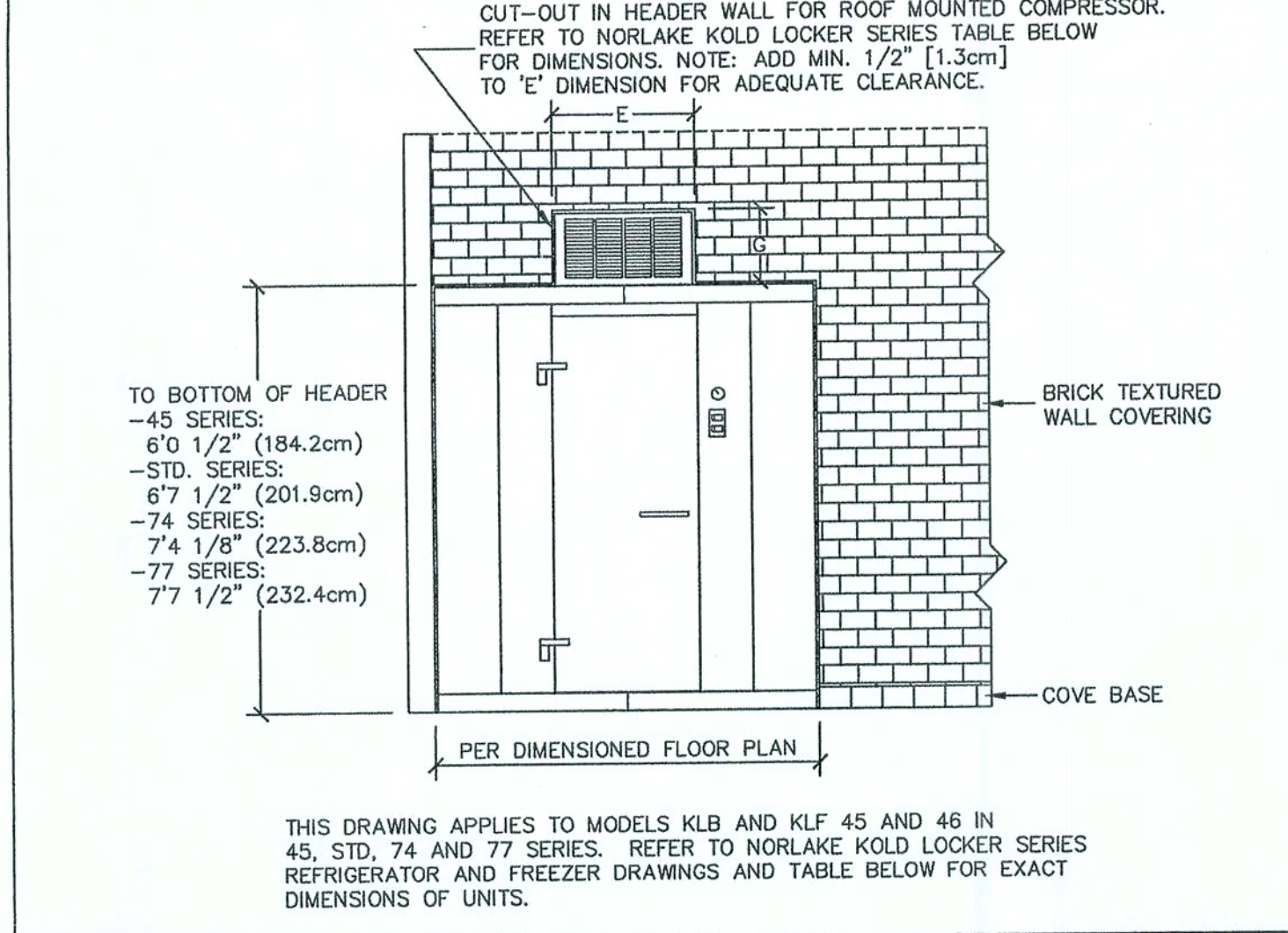
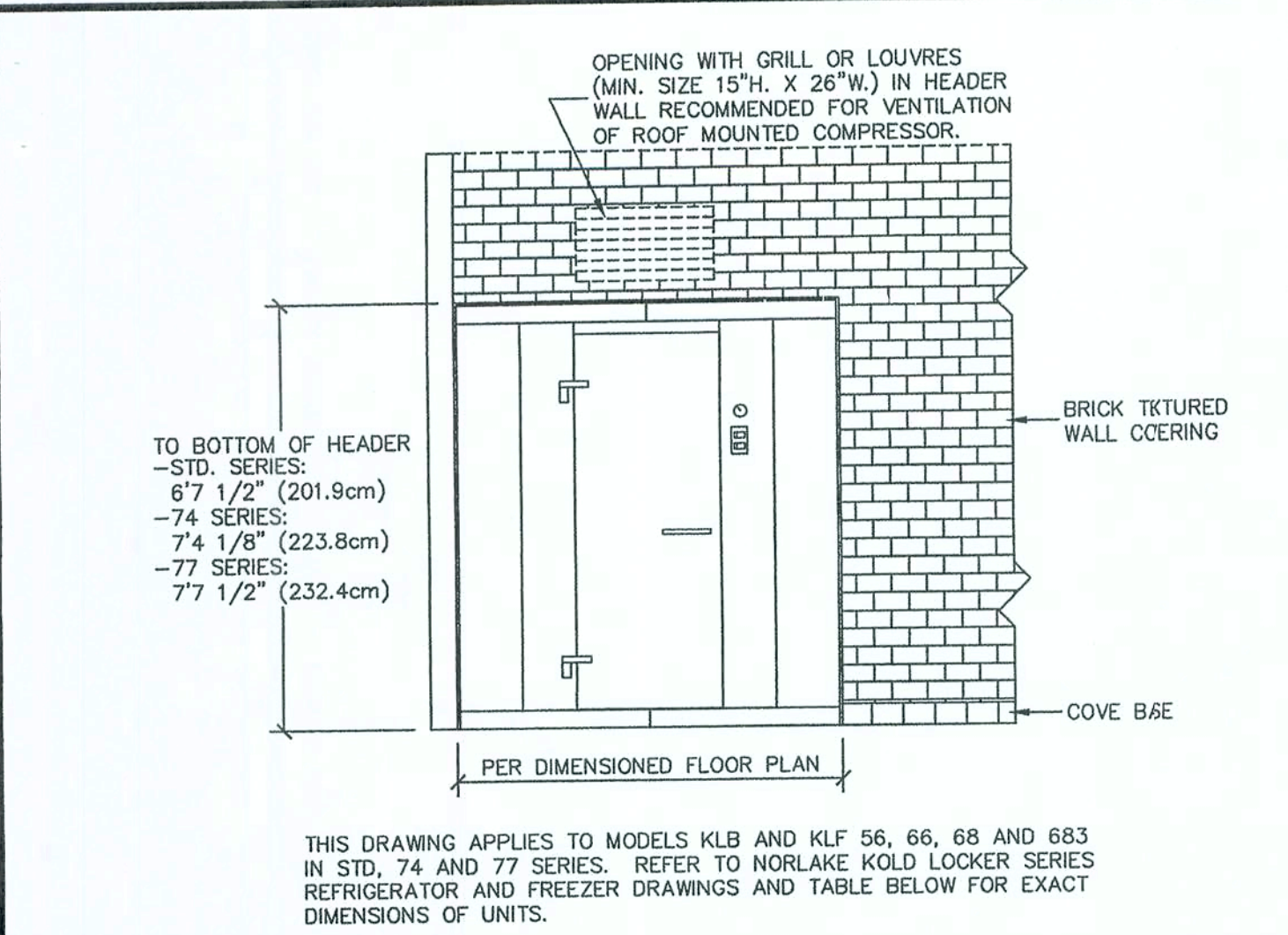
THE GENERAL CONTRACTOR AND EACH SUB-CONTRACTOR SHALL MAKE HIS OWN INSPECTIONS AND MEASUREMENTS. DAI AND SUBWAY SHALL NOT BE HELD RESPONSIBLE FOR THE ACCURACY OF DIMENSIONS AND FOR ERRORS AND OMISSIONS IN THE DRAWINGS IF WRITTEN CONFIRMATION HAD NOT BEEN RECEIVED BY DAI'S STORE DESIGN DEPARTMENT.

THIS DRAWING AND THE INFORMATIONAL CONTENT HEREOF IS THE CONFIDENTIAL PROPERTY OF SUBWAY AND DAI AND IS PROVIDED SOLELY FOR THE USE OF AUTHORIZED FRANCHISEES, THEIR AGENTS AND CONTRACTORS. RECIPIENT AGREES NOT TO REPRODUCE, COPY, USE OR TRANSMIT THIS DRAWING AND/OR ITS INFORMATIONAL CONTENT, IN WHOLE OR IN PART, OR ALLOW SUCH ACTION BY OTHERS FOR ANY PURPOSE, EXCEPT WITH THE WRITTEN PERMISSION OF DAI ACTING FOR SUBWAY. RECIPIENT FURTHER AGREES TO SURRENDER THIS DRAWING AND ANY PERMITTED COPIES HEREOF UPON DEMAND.

STORE MUST BE CONSTRUCTED AS DESIGNED IN THESE FLOOR PLANS SUBJECT TO FEDERAL, STATE AND LOCAL LAWS. RECIPIENT IS RESPONSIBLE FOR ENSURING COMPLIANCE WITH ALL LAWS. IF MODIFICATIONS ARE NECESSARY, PLEASE CONTACT DAI'S DESIGN DEPARTMENT FOR WRITTEN APPROVAL OF THE REQUIRED CHANGES.

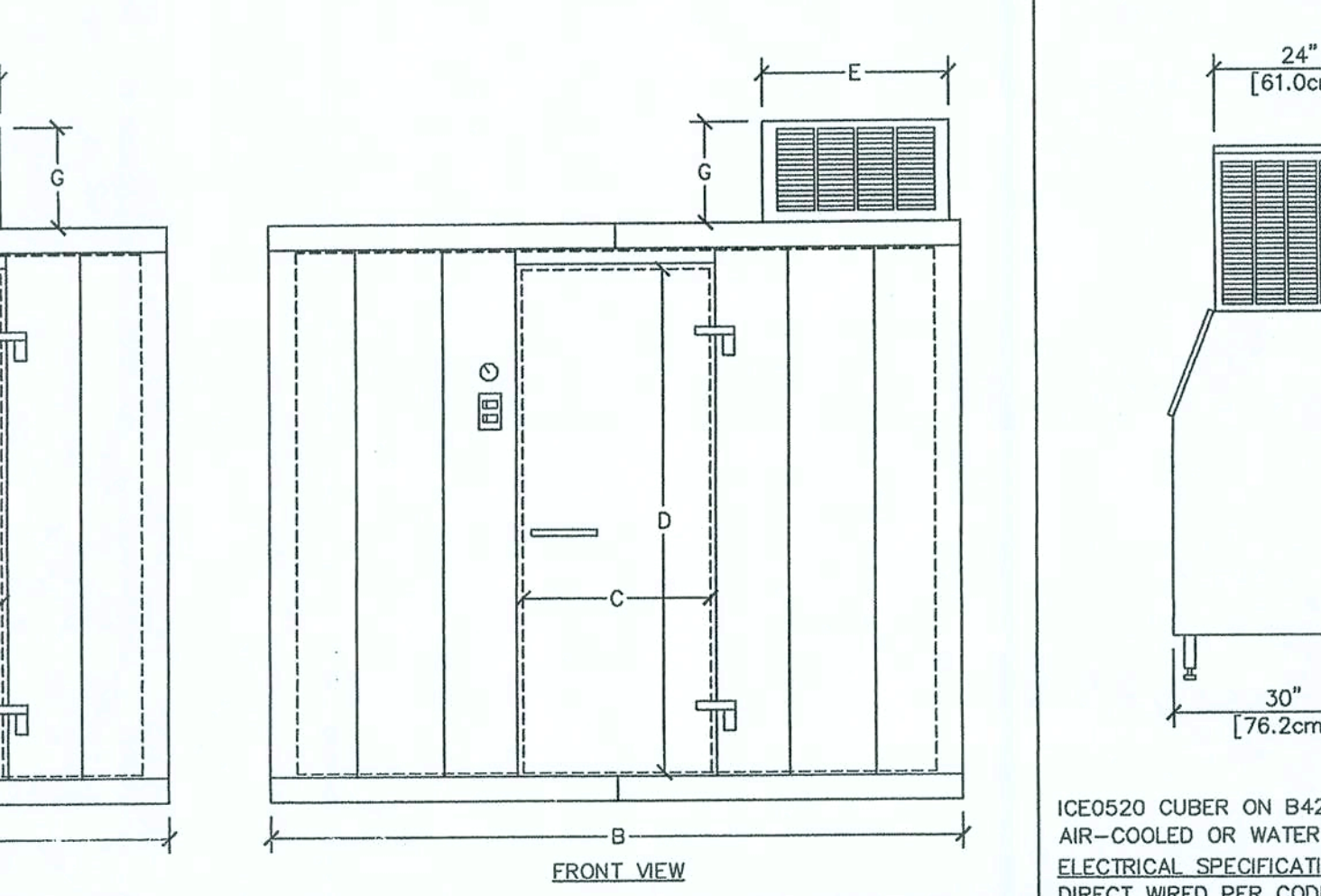
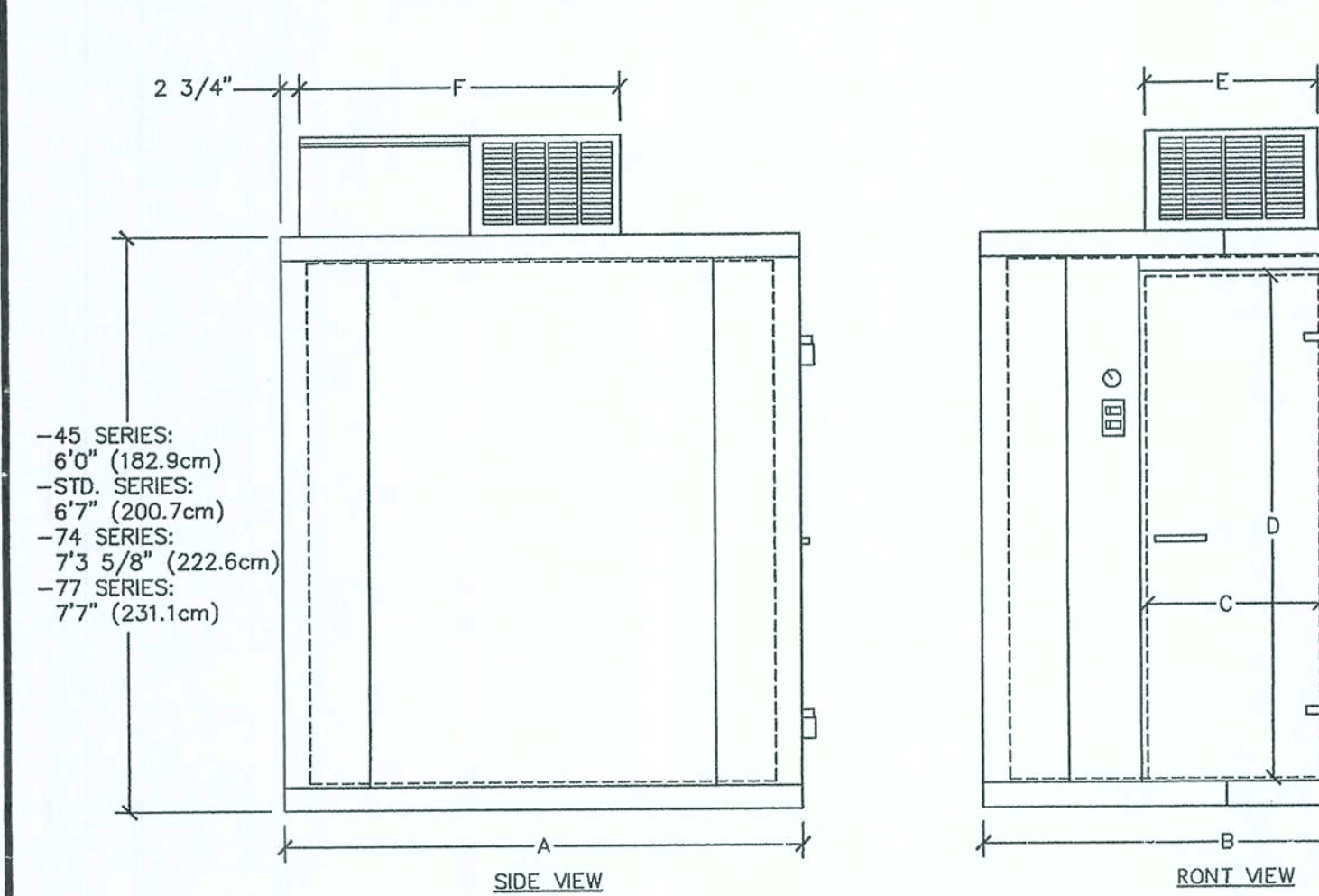
©2005 DOCTORS ASSOCIATES, INC.

SUBWAY		WORLD HEADQUARTERS 325 BIC DRIVE MILFORD, CT 06460 (203) 877-4281 (800) 888-6848	
FRANCHISEE:	MATT KARLTM	STORE #	38233
DEVELOPMENT AGENT:	JIM LENHARD		
DESIGNED BY:	MATT HASBROUCK	DATE:	NOV. 8, 2005
STORE ADDRESS:	I-75 & SR47	NO.	2 OF 3
LAKE CITY, FL		BY	DATE
DRAWN BY:	MH	REVISIONS	
REVIEWED BY:			
SCALE:	1/4" = 1'		



NORLAKE WALK-IN 5' X 6', 6' X 6', 6' X 8' OR 8' X 6' REFRIGERATOR OR FREEZER WITH FACE THROUGH WALL TYPICAL ELEVATION DETAIL

NORLAKE WALK-IN 4' X 5' OR 4' X 6' REFRIGERATOR OR FREEZER WITH FACE THROUGH WALL TYPICAL ELEVATION DETAIL



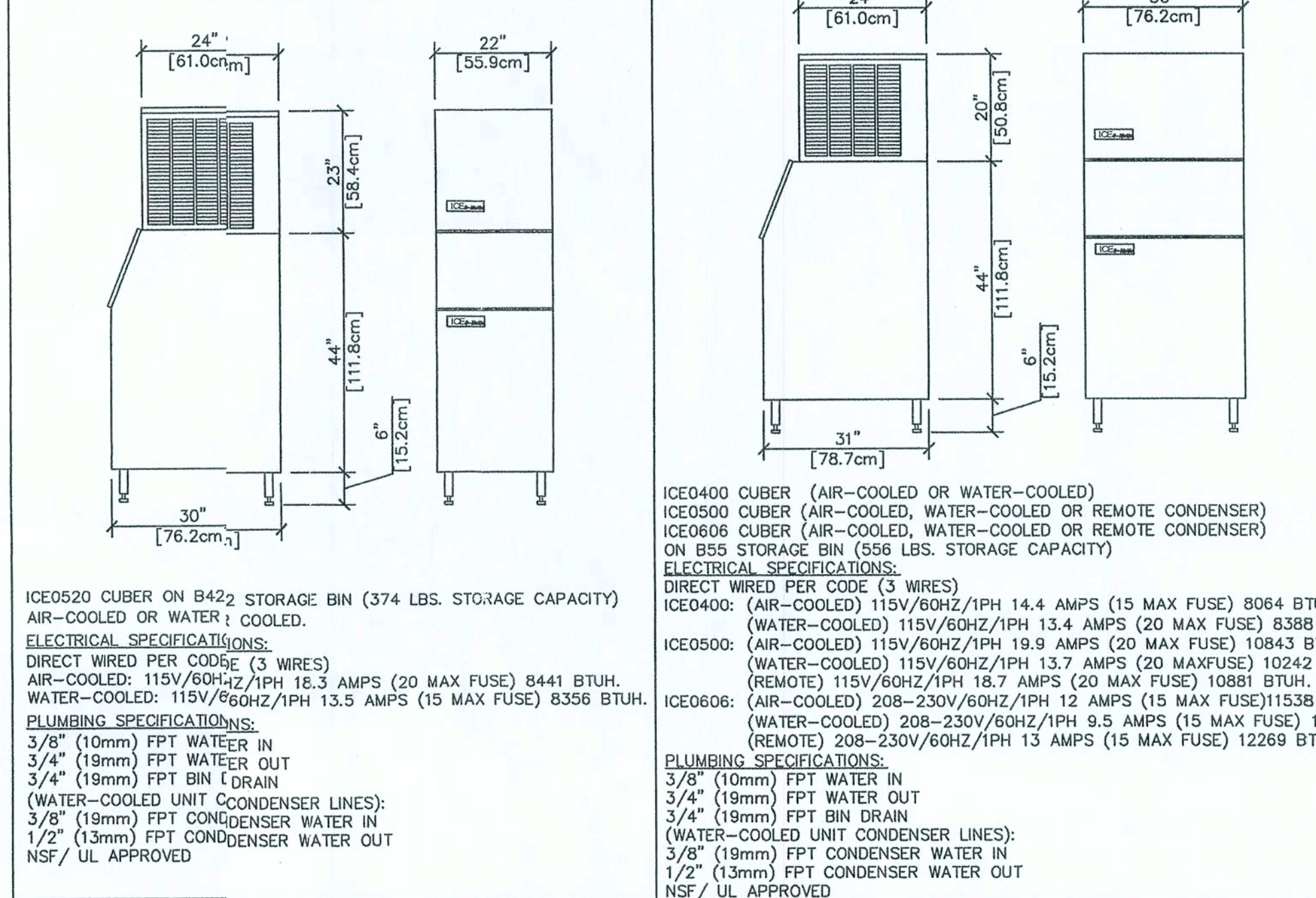
NOTE: KLB = REFRIGERATOR, KLF = FREEZER.

MODEL #	A	B	C	D	E	F	G	INTERIOR CU. FT.	VOLTS/HZ/PH	MINIMUM CIRCUIT AMPS	TOTAL SYSTEM AMPS	MAXIMUM FUSE SIZE
KLB45-CX-SUB	4"	5"	26"	59"	26"	44 1/2"	13 1/2"	7	115/60/1	14.2	11.7	20
KLB46-CX-SUB	4"	5"	26"	59"	26"	44 1/2"	13 1/2"	16	115/60/1	14.2	11.7	20
KLB56-CX-SUB	5"	6"	26"	66"	26"	44 1/2"	13 1/2"	17	115/60/1	14.2	11.7	20
KLB66-CX-SUB	6"	6"	26"	66"	26"	44 1/2"	13 1/2"	18	208-230/60/1	10.5	8.7	15
KLB68-CX-SUB	6"	6"	26"	66"	26"	44 1/2"	13 1/2"	21	208-230/60/1	11.9	10	15
KLB683-CX-SUB	6"	6"	26"	66"	26"	44 1/2"	13 1/2"	21	208-230/60/1	11.9	10	15
KLB7446-CX-SUB	4"	5"	26"	59"	26"	44 1/2"	13 1/2"	13	115/60/1	14.2	11.7	20
KLB7466-CX-SUB	4"	5"	26"	59"	26"	44 1/2"	13 1/2"	15	208-230/60/1	11.9	10	15
KLB7468-CX-SUB	4"	5"	26"	59"	26"	44 1/2"	13 1/2"	23	208-230/60/1	11.9	10	15
KLB74683-CX-SUB	4"	5"	26"	59"	26"	44 1/2"	13 1/2"	23	208-230/60/1	11.9	10	15
KLB7746-CX-SUB	4"	5"	26"	59"	26"	44 1/2"	13 1/2"	13	115/60/1	14.2	11.7	20
KLB7756-CX-SUB	4"	5"	26"	59"	26"	44 1/2"	13 1/2"	17	115/60/1	14.2	11.7	20
KLB7766-CX-SUB	4"	5"	26"	59"	26"	44 1/2"	13 1/2"	15	208-230/60/1	10.5	8.7	15
KLB7768-CX-SUB	4"	5"	26"	59"	26"	44 1/2"	13 1/2"	20	208-230/60/1	11.9	8.7	15
KLB77683-CX-SUB	4"	5"	26"	59"	26"	44 1/2"	13 1/2"	20	208-230/60/1	11.9	8.7	15
KLF45-CX	4"	5"	26"	59"	26"	44 1/2"	13 1/2"	7	208-230/60/1	13.4	10.7	20
KLF46-CX	4"	5"	26"	59"	26"	44 1/2"	13 1/2"	15	208-230/60/1	13.4	10.7	20
KLF56-CX	5"	6"	26"	66"	26"	44 1/2"	13 1/2"	17	208-230/60/1	13.4	8.2	15
KLF66-CX *	6"	6"	26"	66"	26"	44 1/2"	13 1/2"	18	208-230/60/1	13.4	8.2	15
KLF68-CX *	6"	6"	26"	66"	26"	44 1/2"	13 1/2"	21	208-230/60/1	13.4	8.2	15
KLF683-CX	6"	6"	26"	66"	26"	44 1/2"	13 1/2"	21	208-230/60/1	13.4	8.2	15
KLF7746-CX *	4"	5"	26"	59"	26"	44 1/2"	13 1/2"	13	208-230/60/1	13.4	8.2	15
KLF7756-CX	4"	5"	26"	59"	26"	44 1/2"	13 1/2"	17	208-230/60/1	13.4	8.2	15
KLF7766-CX	4"	5"	26"	59"	26"	44 1/2"	13 1/2"	15	208-230/60/1	13.4	8.2	15
KLF7768-CX	4"	5"	26"	59"	26"	44 1/2"	13 1/2"	20	208-230/60/1	13.4	8.2	15
KLF77683-CX	4"	5"	26"	59"	26"	44 1/2"	13 1/2"	20	208-230/60/1	13.4	8.2	15

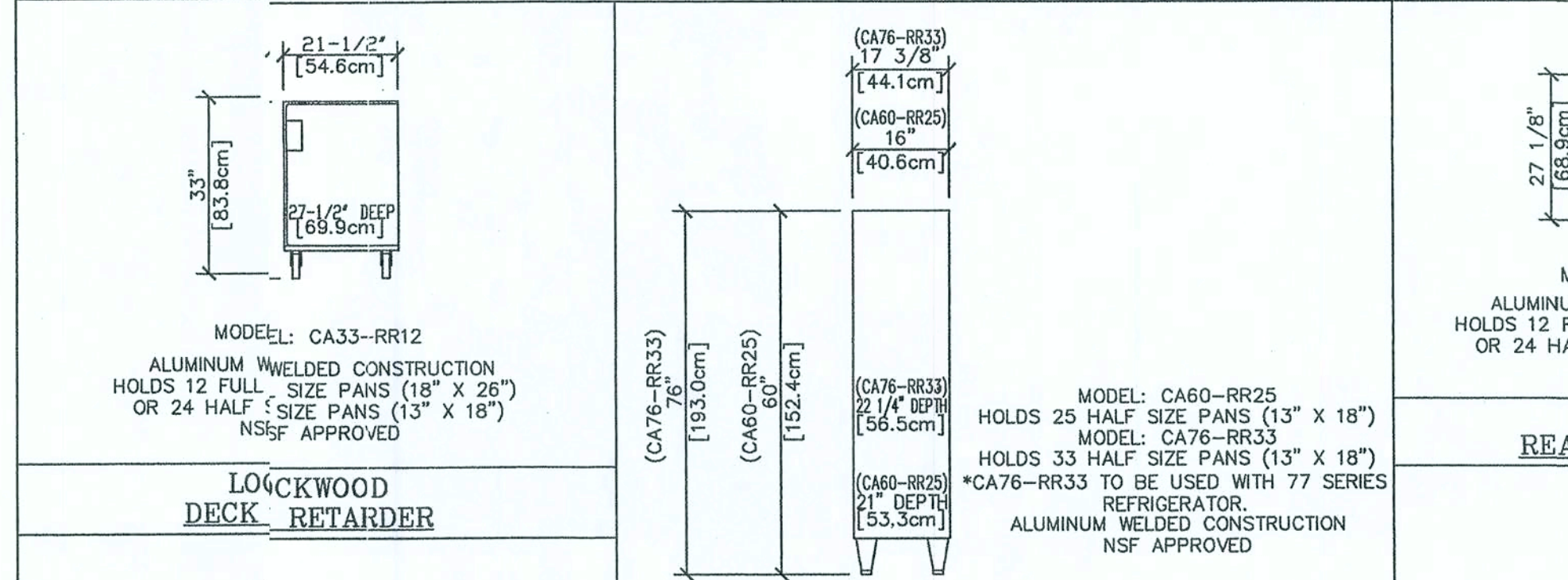
NOTE: EACH DOOR SECTION REQUIRES SEPARATE 115/60/1 HOOK UP AND DRAWS 2.3 AMPS. *THESE SYSTEMS HAVE FAN MOTORS THAT REQUIRE SEPARATE 115/60/1 HOOK UP AND DRAWS 75 AMPS. ABOVE SPECIFICATIONS FOR CEILING MOUNT SYSTEMS AND INDOOR USE ONLY. WALL MOUNT AND REMOTE COMPRESSORS AVAILABLE. SEE MANUFACTURER FOR DETAILS. ALL TO BE DIRECT WIRE. NSF APPROVED. UL LISTING #E-486142 (REPORT #48). E.T.L. APPROVED. CSA FILE 18542-2.

NORLAKE KOLD LOCKER SERIES REFRIGERATOR AND FREEZER

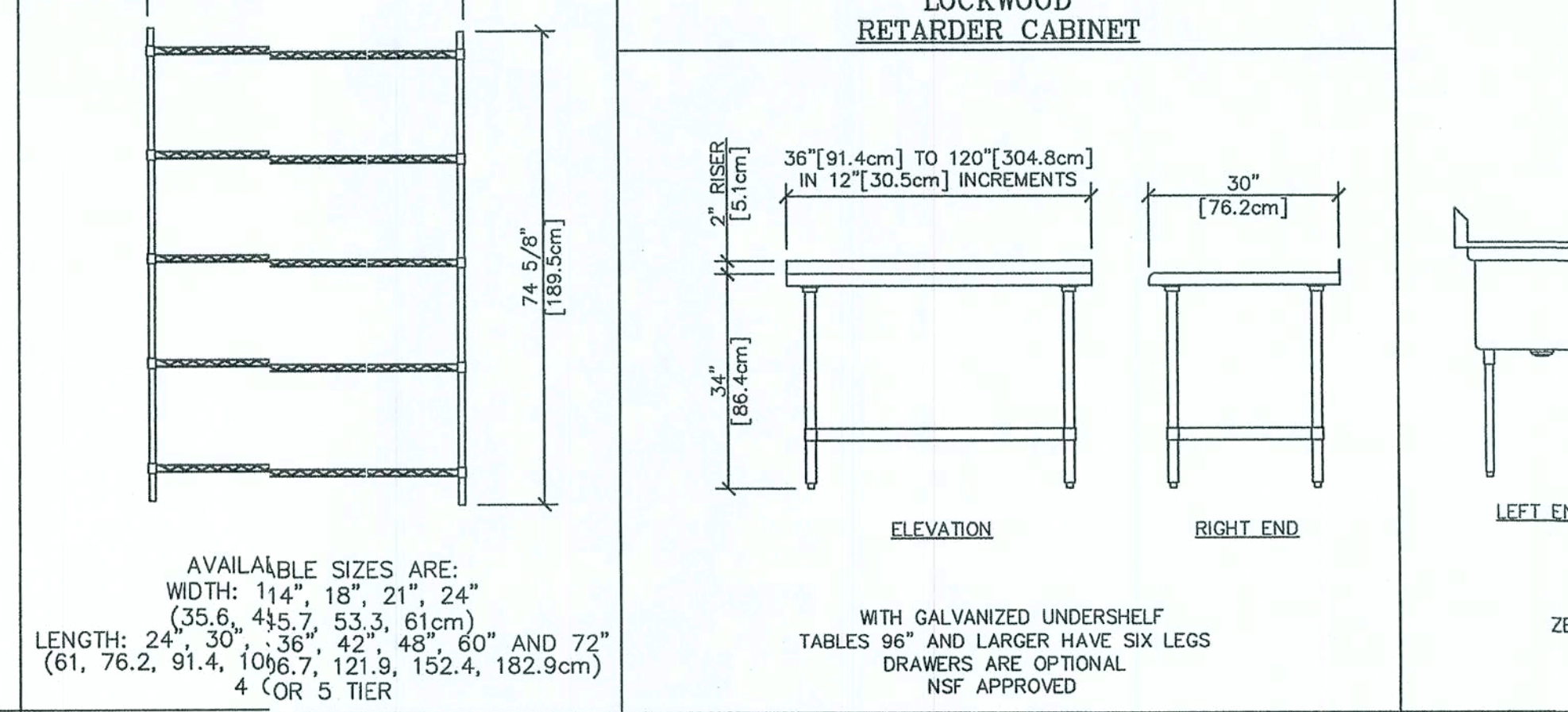
NORLAKE REFRIGERATOR / FREEZER



ICE-O-MATIC ICE CUBER



LOCKWOOD DECK RETARDER



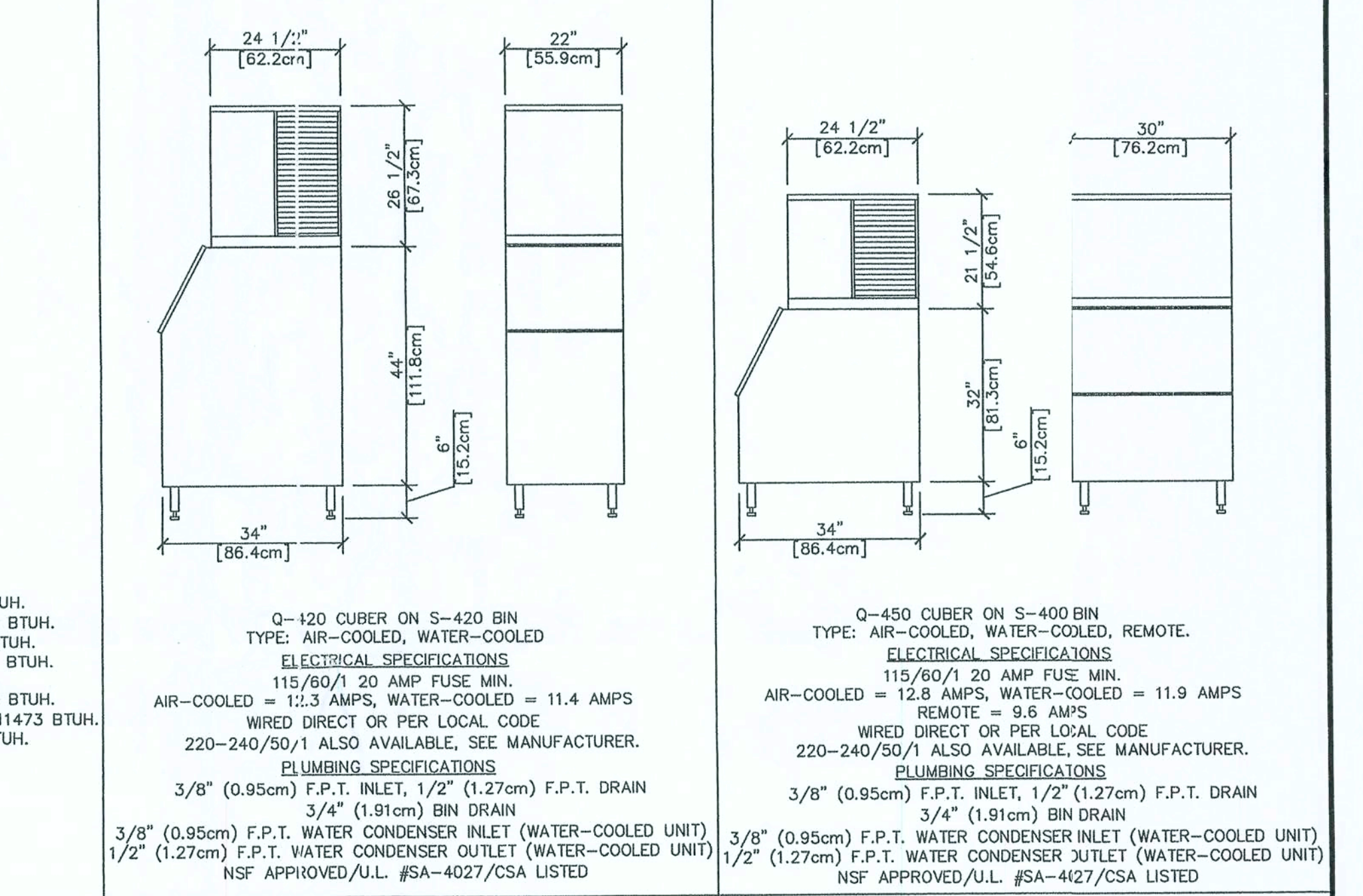
INTERMETRO SHELVING SYSTEMS

MODEL NR763SMS/8 OR NF763SMS/8 SHOWN

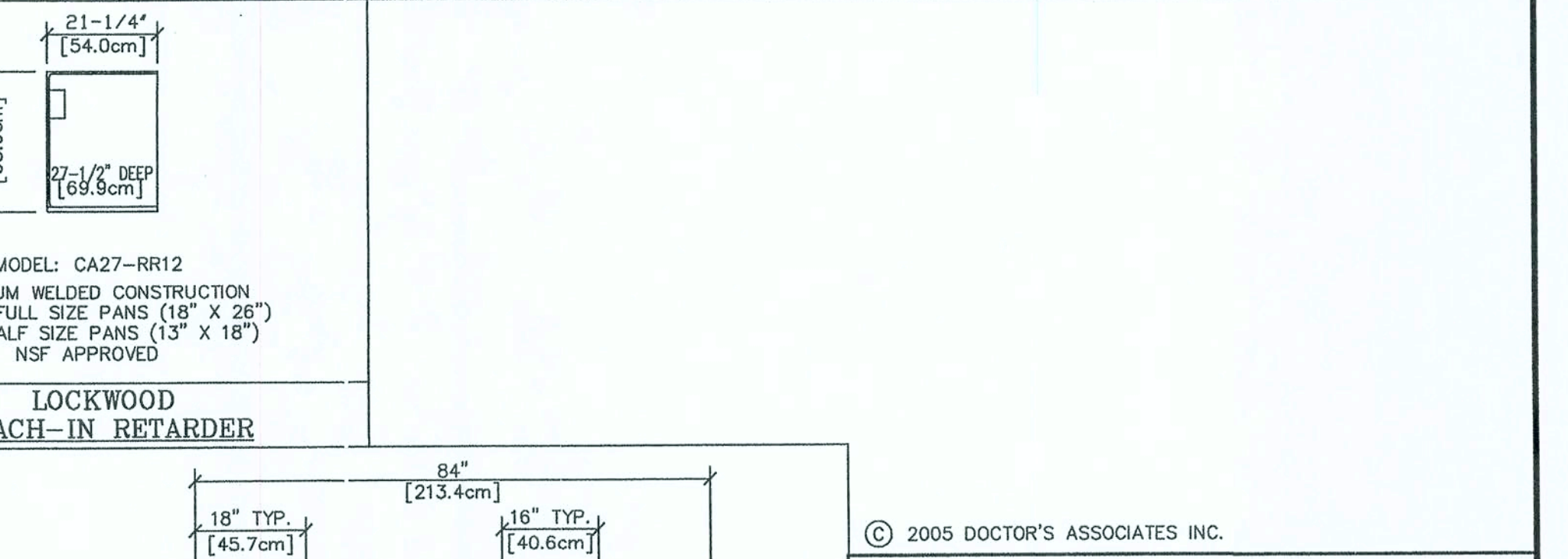
MODEL #	VOLTS/HZ/PH	AMPS.	INTERIOR CU. FT.
NR211SMS/0	115/60/1	10	22.5
NR482SMS/0	115/60/1	12	48.8
NR763SMS/8	208-230/60/1	12	75.0
NF211SMS/0	115/60/1	12	22.5
NF482SMS/0	115/60/1	14	48.8
NF763SMS/8	208-230/60/1	11	75.0

115V SYSTEMS - CORD & PLUG SUPPLIED
208-230V SYSTEM FIELD WIRE PER LOCAL CODE
NSF APPROVED
UL LISTING #SA-3931
CSA LISTING 18542-23

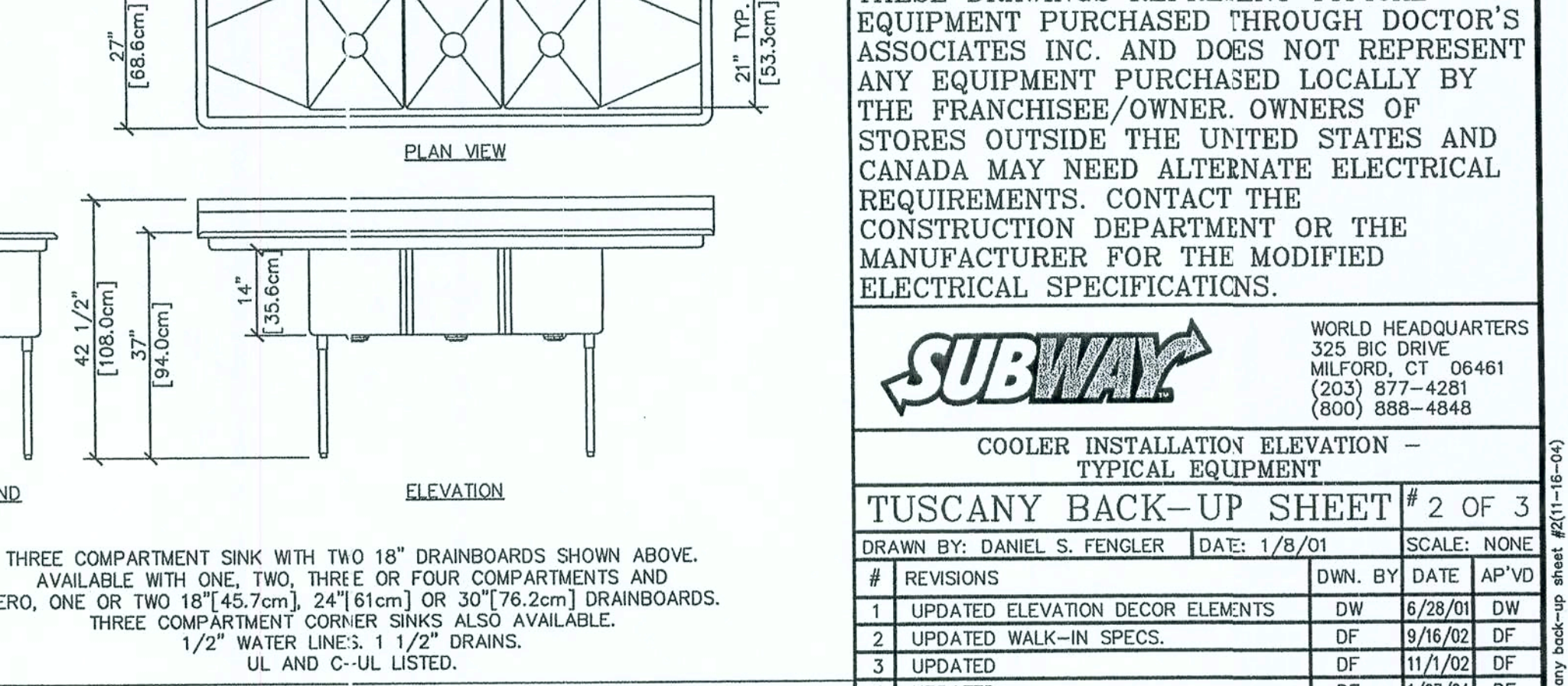
SUBWAY FRUITLEZ DISPENSING STATION



MANITOWOC ICE CUBER



LOCKWOOD REACH-IN RETARDER



DUKE MANUFACTURING STAINLESS STEEL SINK

© 2005 DOCTOR'S ASSOCIATES INC.

NOTE: THESE DRAWINGS REPRESENT TYPICAL EQUIPMENT PURCHASED THROUGH DOCTOR'S ASSOCIATES INC. AND DOES NOT REPRESENT ANY EQUIPMENT PURCHASED LOCALLY BY THE FRANCHISEE/OWNER. OWNERS OF STORES OUTSIDE THE UNITED STATES AND CANADA MAY NEED ALTERNATE ELECTRICAL REQUIREMENTS. CONTACT THE CONSTRUCTION DEPARTMENT OR THE MANUFACTURER FOR THE MODIFIED ELECTRICAL SPECIFICATIONS.

SUBWAY

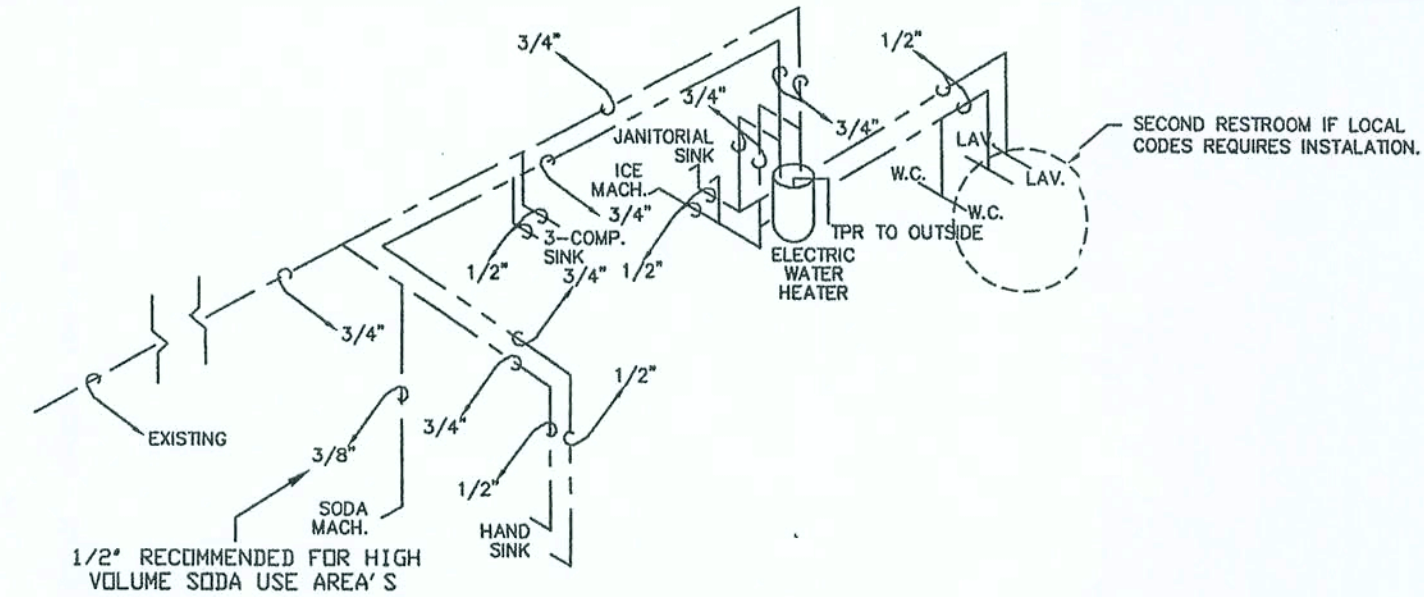
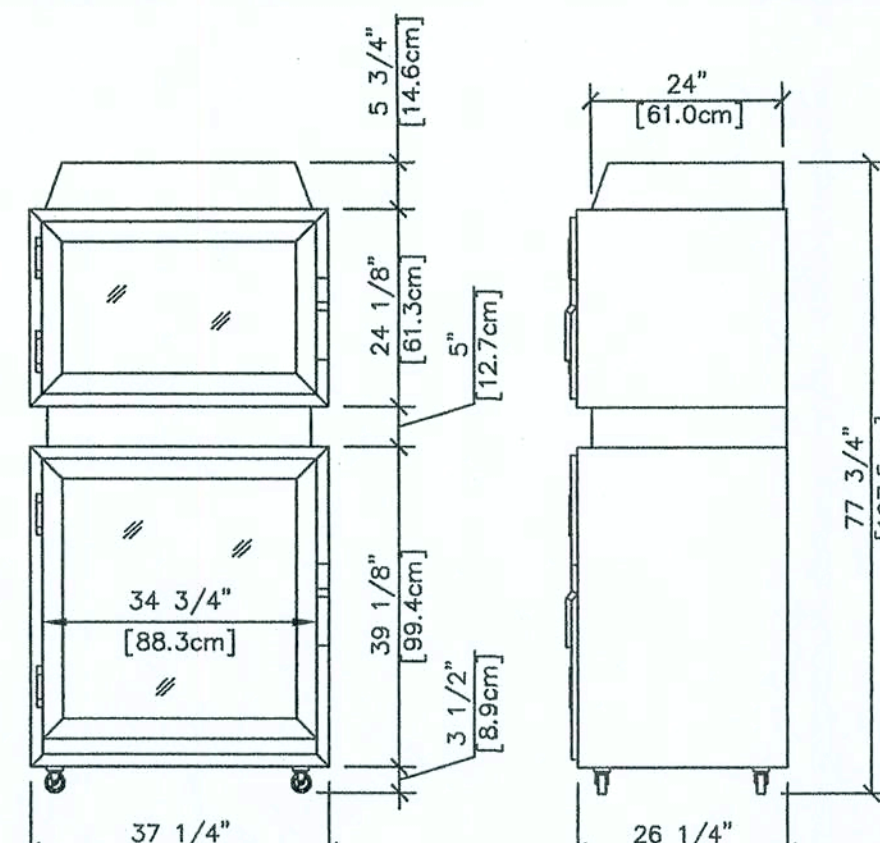
WORLD HEADQUARTERS
325 BIC DRIVE
MILFORD, CT 06461
(203) 877-4281
(800) 888-4848

COOLER INSTALLATION ELEVATION - TYPICAL EQUIPMENT

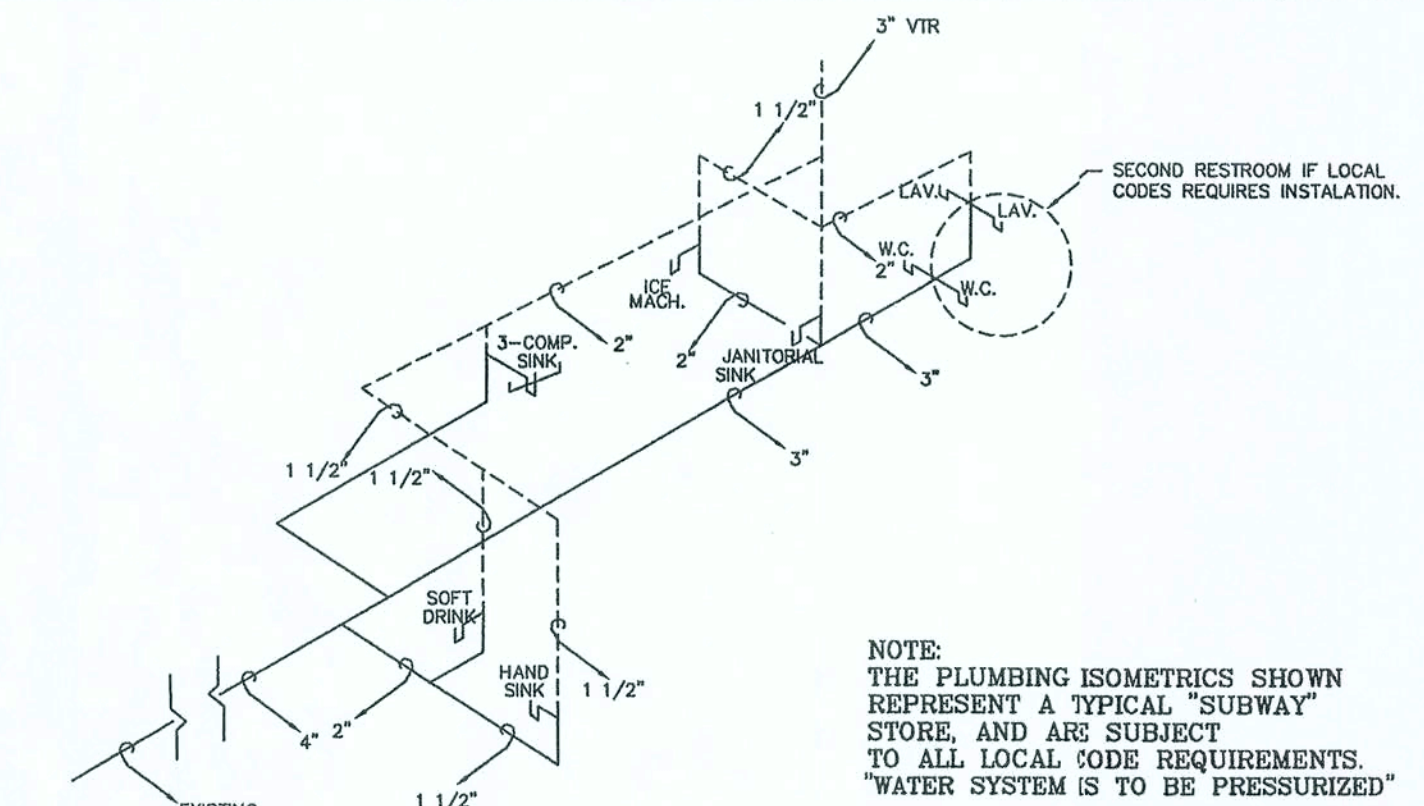
TUSCANY BACK-UP SHEET # 2 OF 3

DRAWN BY: DANIEL S. FENGLER DATE: 1/8/01 SCALE: NONE

#	REVISIONS	DWN. BY	DATE	APP'VD
1	UPDATED ELEVATION DECOR ELEMENTS	DW	6/28/01	DW
2	UPDATED WALK-IN SPECS.	DF	9/16/02	DF
3	UPDATED	DF	11/1/02	DF
4	UPDATED	DF	12/27/04	DF
5	ICE-O-MATIC ICE CUBER	DF	11/16/04	DF



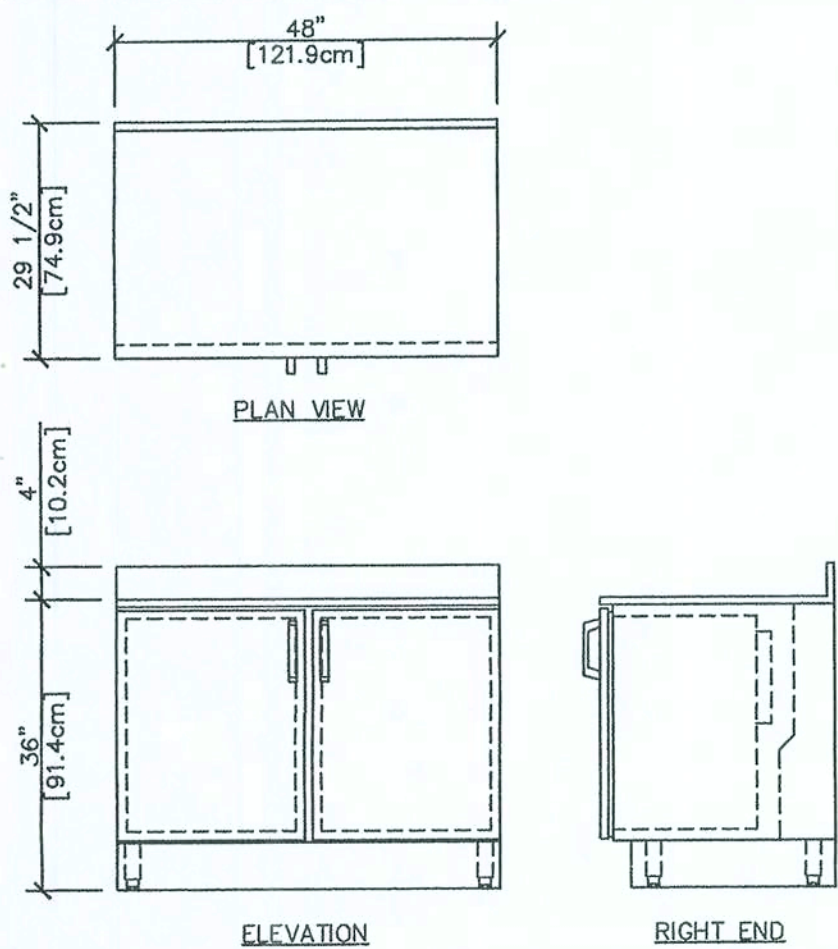
HOT & COLD WATER SYSTEM



DRAINAGE & VENT SYSTEM

TORNADO MICROWAVE/CONVECTION OVEN
MULTI-SPEED CONVECTION BLOWER WITH INDEPENDENTLY CONTROLLED
BOTTOM BROWNING ELEMENT.
STAINLESS STEEL FRONT, TOP, SIDES AND BACK.
ELECTRICAL:
208/240 VAC, 60 HZ, 1 PH.
NAMEPLATE RATING 30 AMP
10 GAUGE, 5 CONDUCTORS, 5 FOOT CORDSET WITH NEMA 6-30 PLUG
HEATING CIRCUIT: 6240 WATTS
MICROWAVE INPUT: 3200 WATTS
CERTIFICATIONS: UL, cUL, NSF, FDA, FCC

TURBOCHEF RAPID COOK OVEN

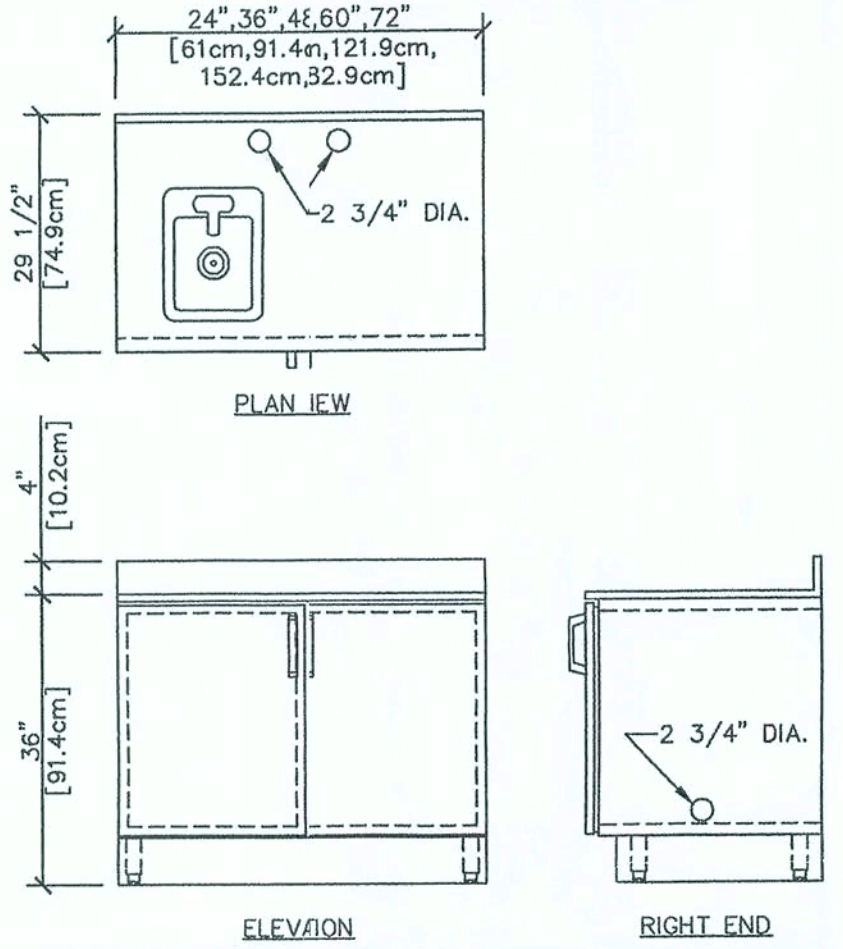


IRISH MAPLE LAMINATE ON DOORS AND SIDES
WITH STAINLESS STEEL TOP.
UL, C-UL AND UL-S LISTED
ELECTRICAL SPECIFICATIONS
115/60/1, 6.4 AMPS. 6' CORD & PLUG (NEMA #5-15)

DUKE REFRIGERATED BACK BAR

MODL: CA72-RR18
POLYCARBONATE DOOR

LOCKWOOD BREAD CABINET

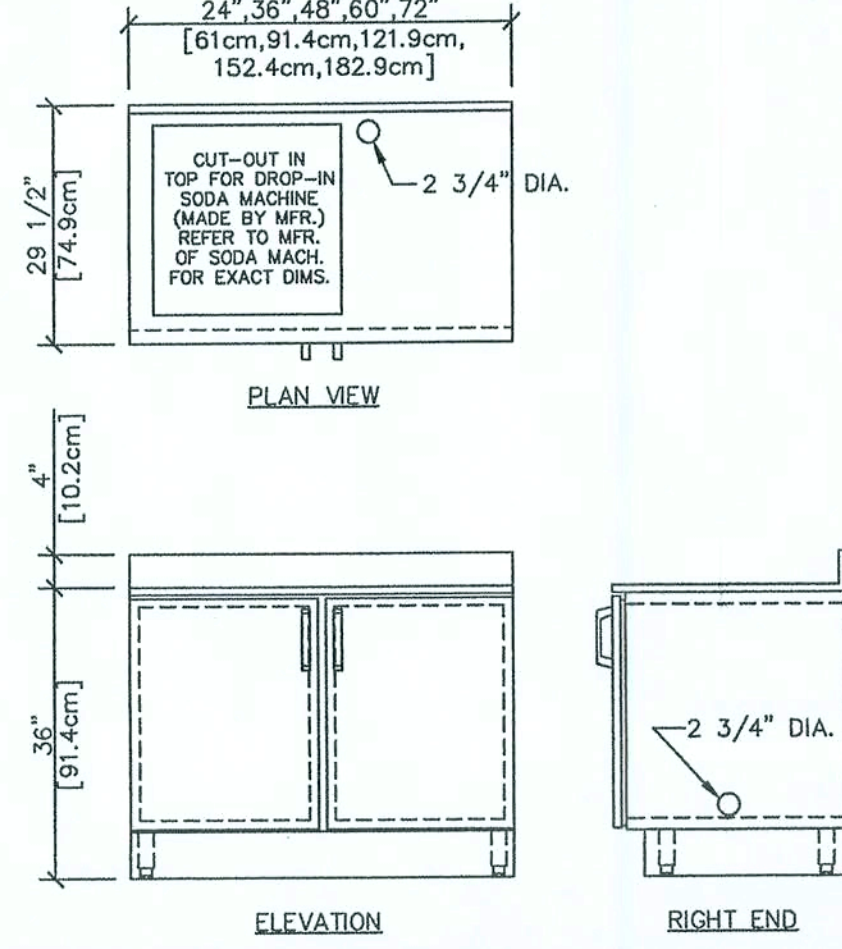


OPTIONAL RIGHT HAND SIN SHOWN (LEFT HAND SINK ALSO AVAILABLE)
HAND SINK IS ALSO AVAILABLE AT A 90 DEGREE ANGLE
REINFORCED TOP TO HOLD CONTER TOP MOUNTED SODA MACHINE AVAILABLE.
IRISH MAPLE AMINATE ON DOORS AND SIDES
WITH STAINLESS STEEL TOP.
UL, -UL AND UL-S LISTED

DUKE BACK COUNTER

MODEL: HW-2
NSF APPROVED

NU-VU BREAD CABINET



CUT-OUT IN TOP MAY BE ON RIGHT OR LEFT SIDE
ALSO AVAILABLE IN 35 1/2" [90.2cm] DEPTH.
IRISH MAPLE LAMINATE ON DOORS AND SIDES
WITH STAINLESS STEEL TOP.
UL, C-UL AND UL-S LISTED

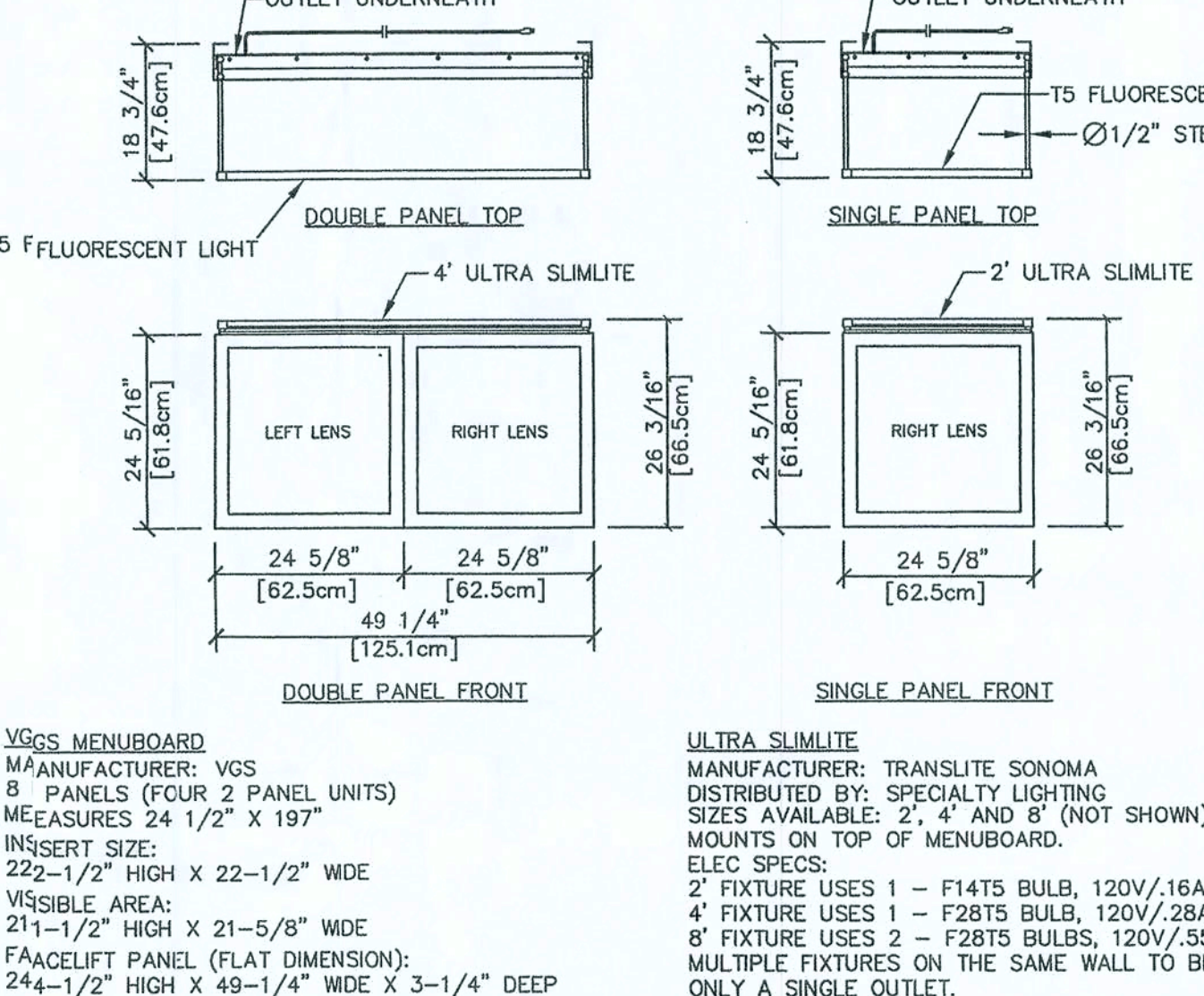
DUKE BACK COUNTER

*WATER INLET FOR OPTIONAL AUTOMIST AUTOMATIC HUMIDITY SYSTEM
ELECTRICAL SPECIFICATIONS

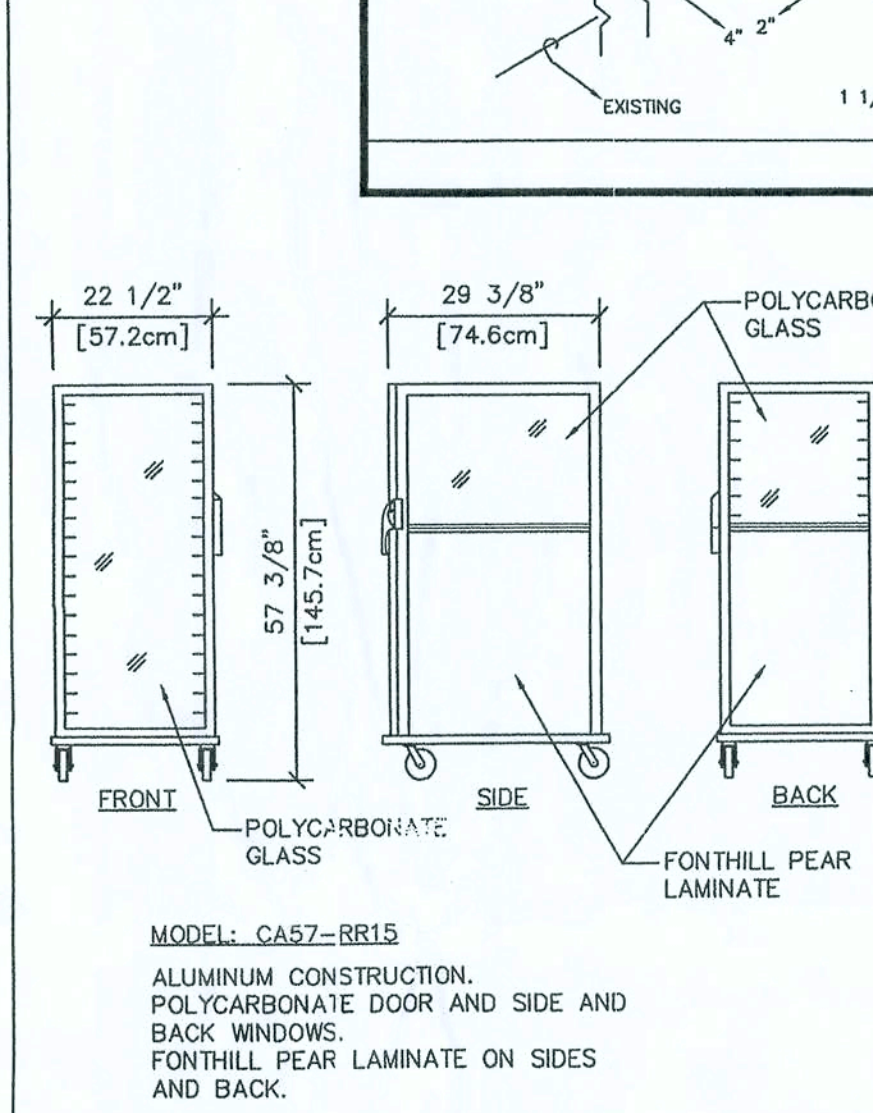
VOLTAGE	PHASE	AMPS	KILOWATTS	NO. WIRES	SHIP WT.
120/208	1	29	5.135	4	535 LBS.
120/240	1	27	5.135	4	535 LBS.
120/208	3	22	5.135	5	535 LBS.
120/240	3	18	5.135	5	535 LBS.

FIELD WIRING REQUIRED PER LOCAL CODE
NSF APPROVED
UL AND C-UL LIST #E61840

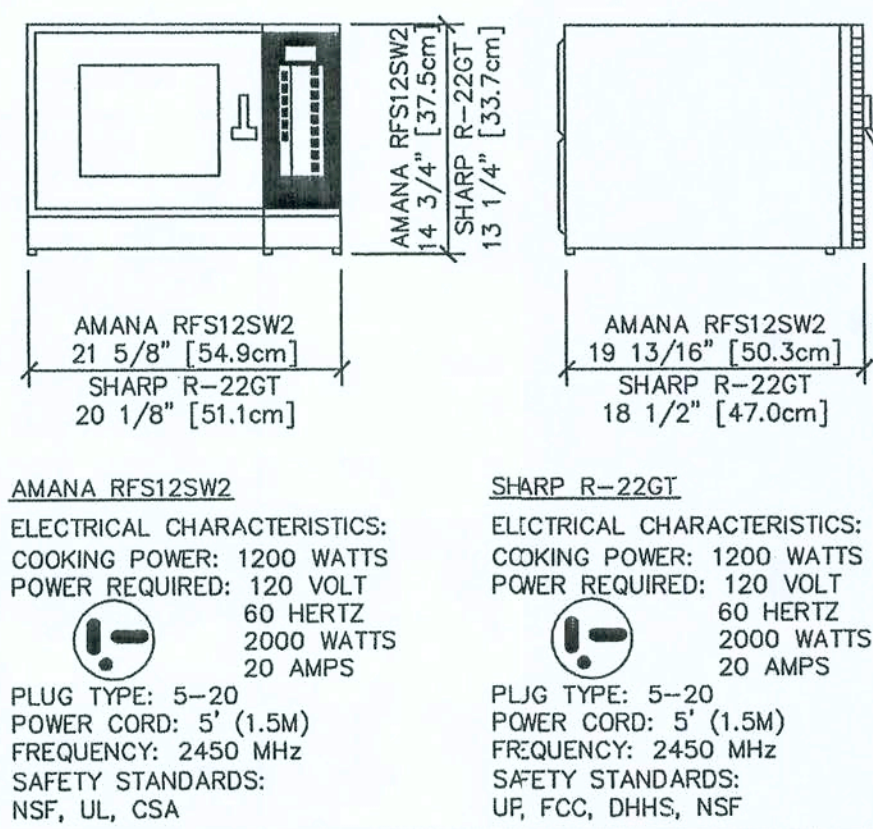
INU-VU BREAD OVEN



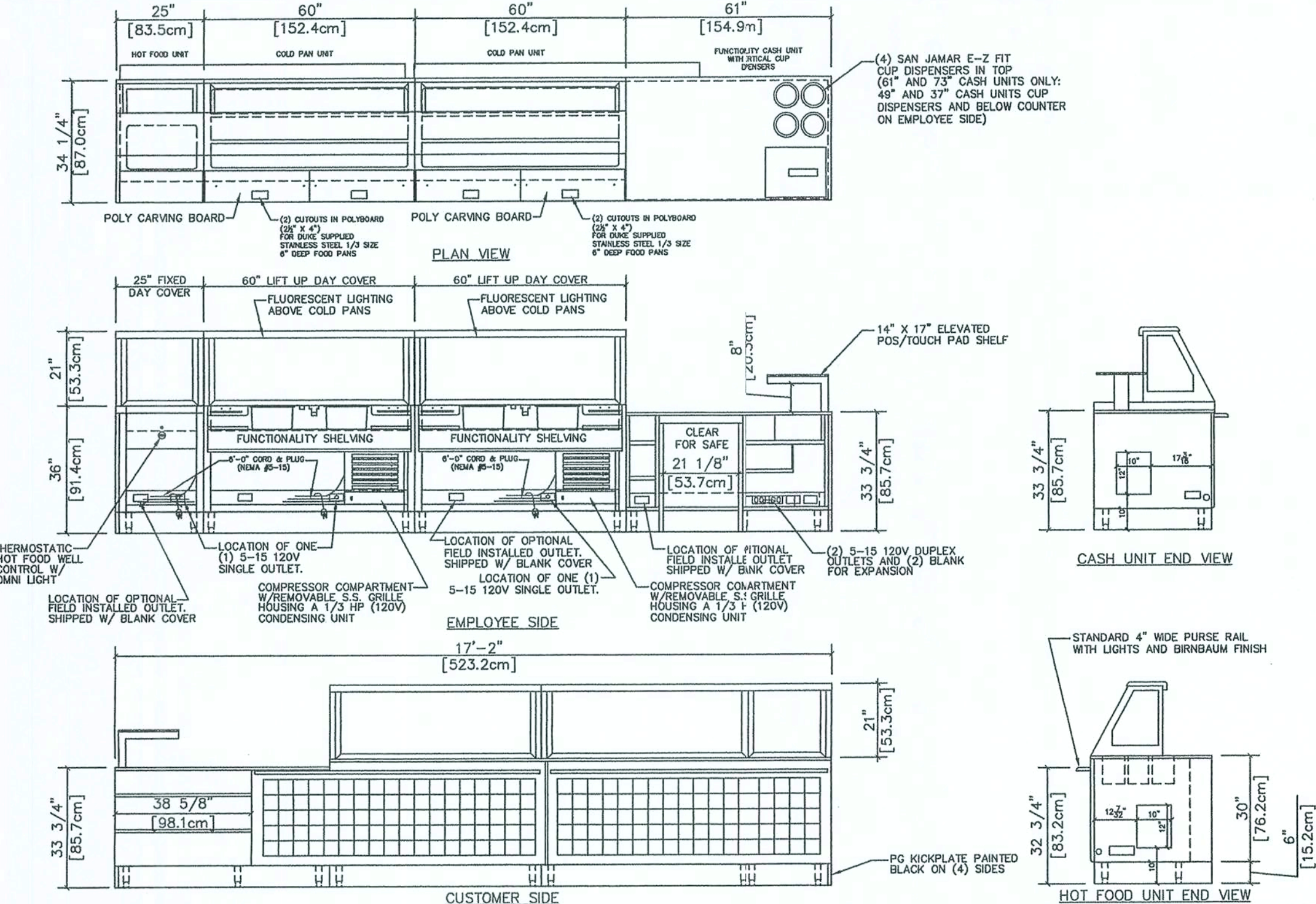
VGS MENUBOARD WITH ULTRA SLIMLITE



LOCKWOOD FRONTLINE BREAD DISPLAY CABINET

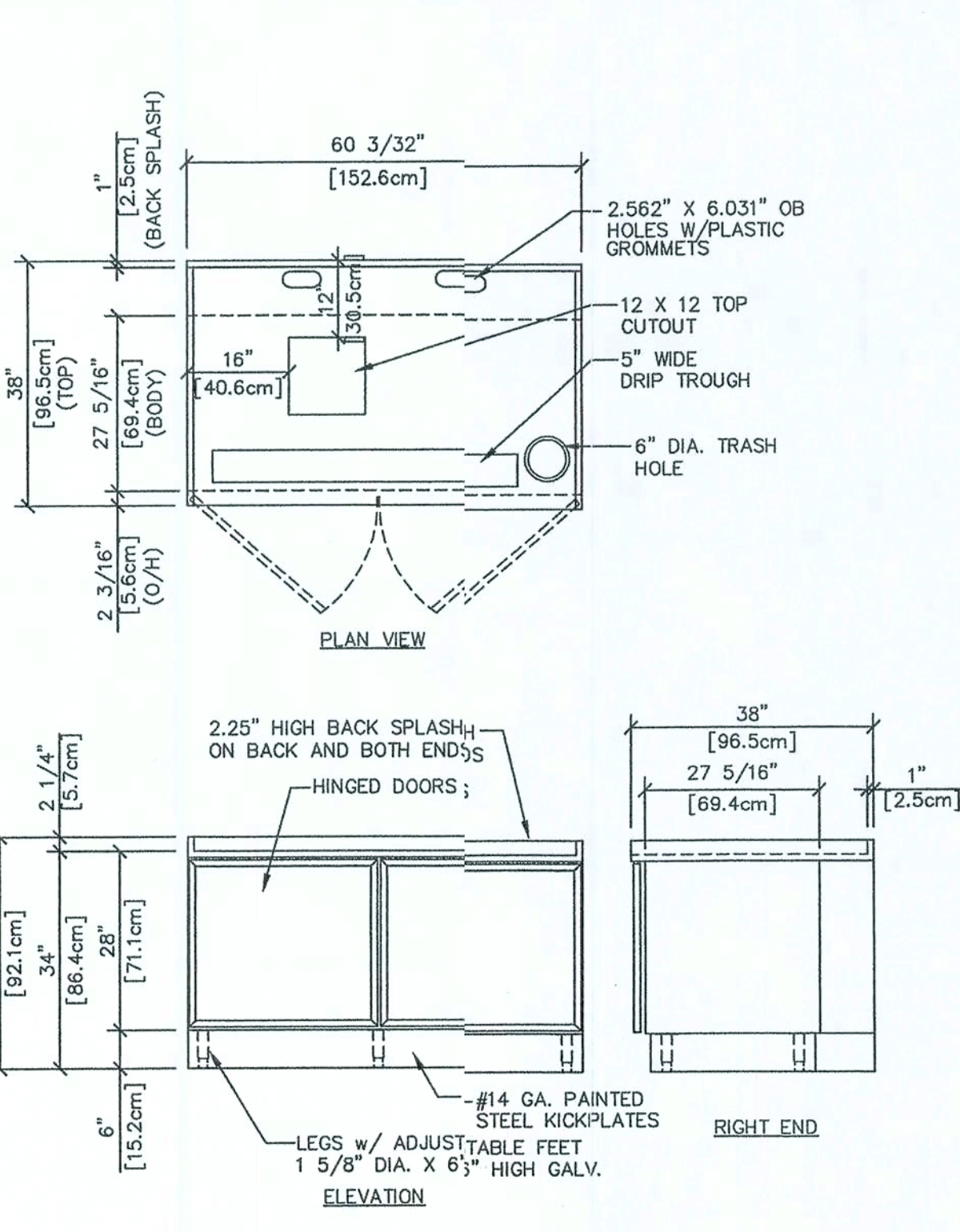


MICROWAVE OVEN



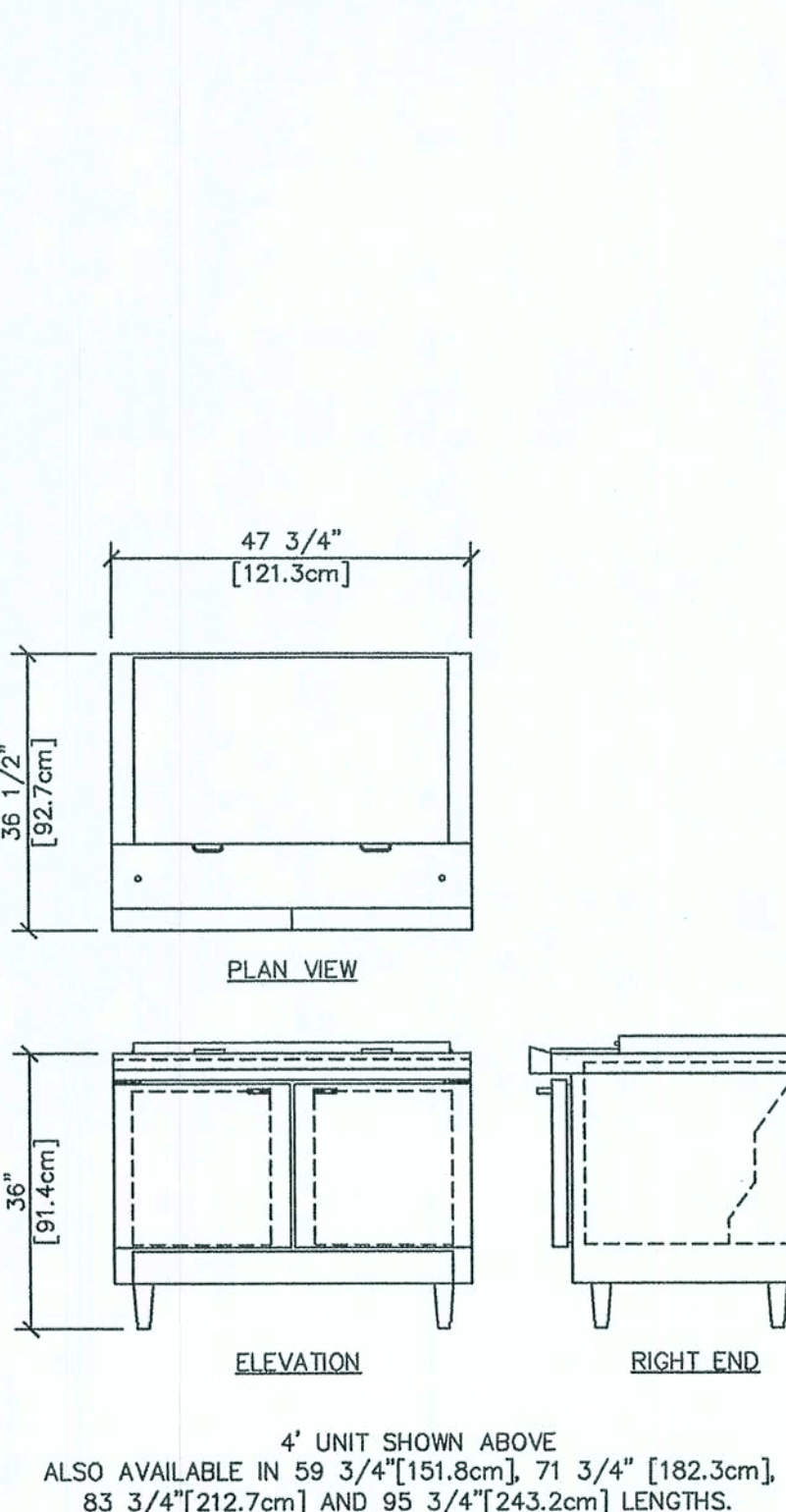
SHOWN ABOVE: 17'-2" FRONT COUNTER W/HIGHT HANDS 25"[83.5cm] HOT FOOD UNIT, 2'00"[62.15cm] COLD PAN UNITS AND 6'[154.9cm] CASH UNIT.	ELECTRICAL SPECIFICATIONS --HOO FOOD UNIT: 118/60/1, 4.2A OR 220/50/1 3.5A, 500 WATTS. --COP PAN UNITS: 48" 6" UNIT: 1/3HP, 120/60/1, 7.9A OR 220/50/1, 3.8A 7" & 8" UNIT: 120/60/1, 5.5A OR 220/50/1, 4.5A
FT HAND AND RIGHT HAND WARMER UNITS AVAILABLE: SH UNIT LENGTHS AVAILABLE: 66"[167.6cm] 73"[185.4cm] 94"[239.1cm] TE AND 48" DO NOT HAVE SAFE CUT-OUT:	--6 REMWRED ELEC. OUTLETS BUILT INTO CASH UNIT FOR COOL PANS, HOT FOOD UNIT, POS POWER CONDITIONER, PRINTER, ETC. 20' PREMURED CONDUIT. (NEMA #5-15)
1 PAN UNIT LENGTHS AVAILABLE: 86"[218.4cm] 94"[239.1cm] 60"[152.4cm] 48"[121.9cm]. FOOD UNIT LENGTHS AVAILABLE: 61"[154.9cm] 49"[124.5cm] 37"[94.0cm] 25"[63.5cm]. HOT FOOD UNIT LENGTHS AVAILABLE: 61"[154.9cm] 49"[124.5cm] 37"[94.0cm] 25"[63.5cm]. TE AND 48" DO NOT HAVE SAFE CUT-OUT:	--ALL ELECTRICAL SHALL COMPLY WITH LOCAL AND STATE CODES. --NS AND UL'S APPROVED --C-IP AND ULS LISTED
10.50cm] 24"[61cm] 36"[91.4cm] 48"[121.9cm] 60"[152.4cm] AND 72"[182.9cm]. [.00cm] EXTENSION WITH ADDITIONAL CASH DRAWER ALSO AVAILABLE).	

DUKE FRONT COUNTER



SUB-BEVDEST-60L SHOWN ABOVE.
AVAILABLE IN THE FOLLOWING LENGTHS:
48 3/32" [122.2cm], 60 3/32" [152.6cm],
72 3/32" [183.1cm], 84 1/8" [213.7cm].
FINISH: IRISH MAPLE LAMINATE SIDES AND DOORS
STAINLESS STEEL TOP.
UP, C-UP AND UP-S LISTED.

DUKE BEVERAGE CENTER



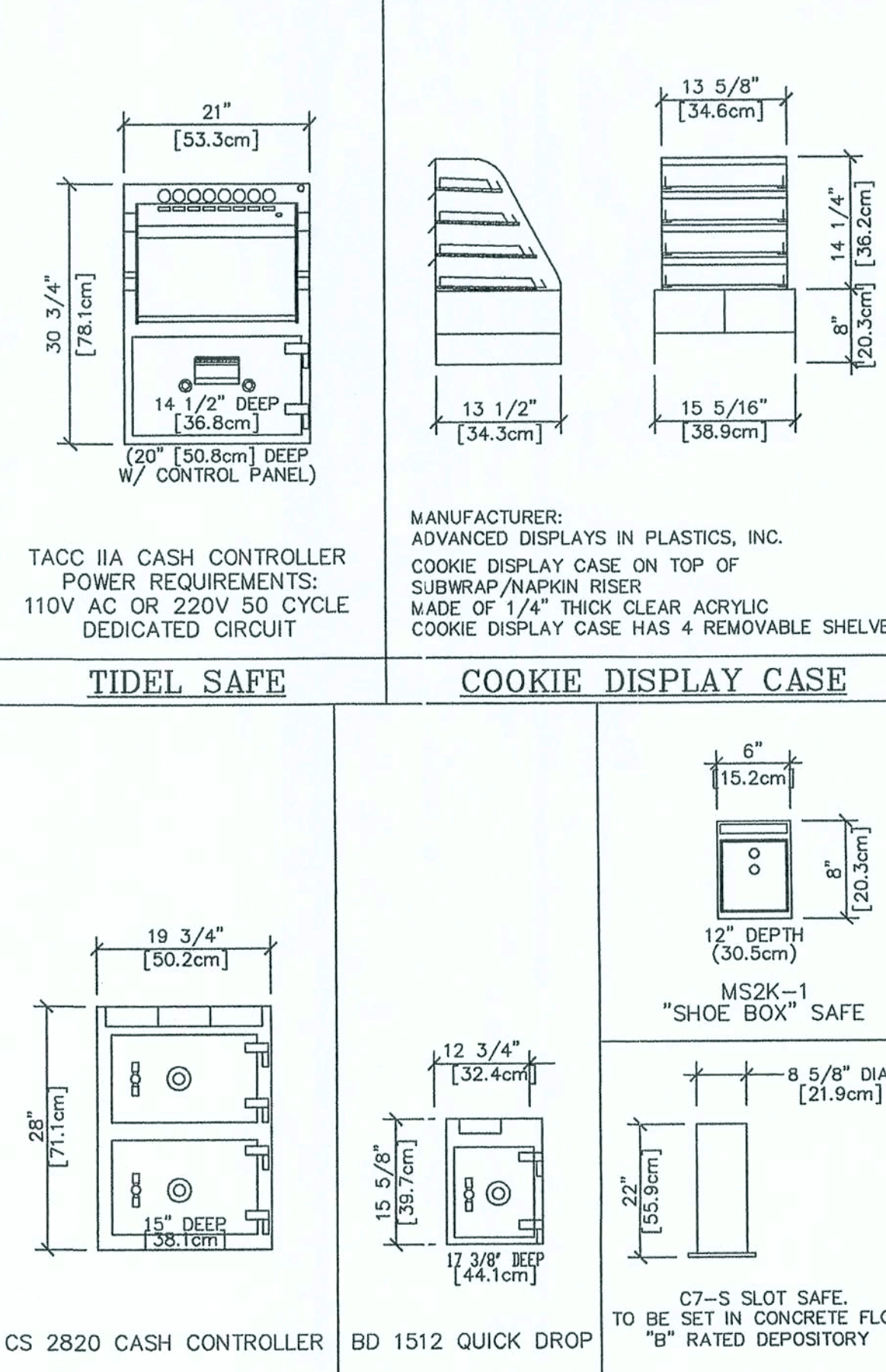
4' UNIT SHOWN ABOVE
ALSO AVAILABLE IN 59 3/4"[151.8cm], 71 3/4" [182.3cm],
83 3/4"[212.7cm] AND 95 3/4"[243.2cm] LENGTHS.

ELECTRICAL REQUIREMENTS

4' UNIT: 115/60/1, 9.3 AMPS.
5' UNIT: 115/60/1, 9.3 AMPS.
6' UNIT: 115/60/1, 11.2 AMPS.
7' UNIT: 115/60/1, 11.2 AMPS.
8' UNIT: 115/60/1, 11.2 AMPS.

ALL WITH 6' CORD AND PLUG (NEMA #5-15P)
UL, C-UL AND UL-S LISTED

NOR-LAKE SANDWICH UNIT



C.S.S. / J. ROSS BOLES SAFES

MODEL: RC-121518

FOR USE WITH DUKE REFRIGERATED BACK COUNTER

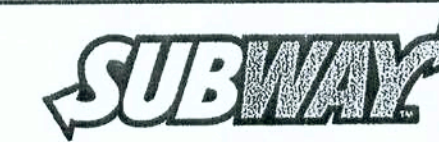
ALUMINUM WELD CONSTRUCTION

HOLDS 12 HALF SIZE PANS (13" X 18")

NSF APPROVED

DUKE RETARDER CABINET

NOTE: THESE DRAWINGS REPRESENT TYPICAL EQUIPMENT PURCHASED THROUGH DOCTOR'S ASSOCIATES INC. AND DOES NOT REPRESENT ANY EQUIPMENT PURCHASED LOCALLY BY THE FRANCHISEE/OWNER. OWNERS OF STORES OUTSIDE THE UNITED STATES AND CANADA MAY NEED ALTERNATE ELECTRICAL REQUIREMENTS. CONTACT THE CONSTRUCTION DEPARTMENT OR THE MANUFACTURER FOR THE MODIFIED ELECTRICAL SPECIFICATIONS.



WORLD HEADQUARTERS
325 BIC DRIVE
MILFORD, CT 06461
(203) 877-4281
(800) 888-4848

TYPICAL EQUIPMENT - TYPICAL PLUMBING AND VENTING						
TUSCANY BACK-UP SHEET						# 3 of 3
DRAWN BY: DANIEL S. FENGLER				DATE: 1/8/01		NO SCALE
#	REVISIONS		DWN.	DATE	AP'V	
4	DUKE FRONT COUNTER		DF	3/31/03	DF	
4	DUKE FRT. CTR. AND RETARDER CABINET		DF	4/14/03	DF	
5	DUKE FRT. CTR. AND SAFES		DF	5/20/03	DF	
7	DUKE FRT. CTR. TRI-CHANNEL		DF	6/12/03	DF	
8	DUKE BEVERAGE CENTER		DF	8/26/03	DF	
9	MENUBOARD WITH LIGHTING		DF	11/20/03	DF	
10	DUKE FRT. CTR. AND BACK COUNTERS		DF	12/01/03	DF	
11	BEVERAGE CENTER		DF	12/15/03	DF	
12	BEVERAGE CENTER		DF	1/27/04	DF	
13	FRONT COUNTER / RAPID COOK Q/EN		DF	3/25/04	DF	
14	DUKE FRONT COUNTER / NEW SAFE		DF	4/28/04	DF	
15	CHANGE MICROWAVE SPECS.		DF	11/03/04	DF	
16	FRONTLINE BREAD DISPLAY CABINET		DF	7/28/05	DF	

