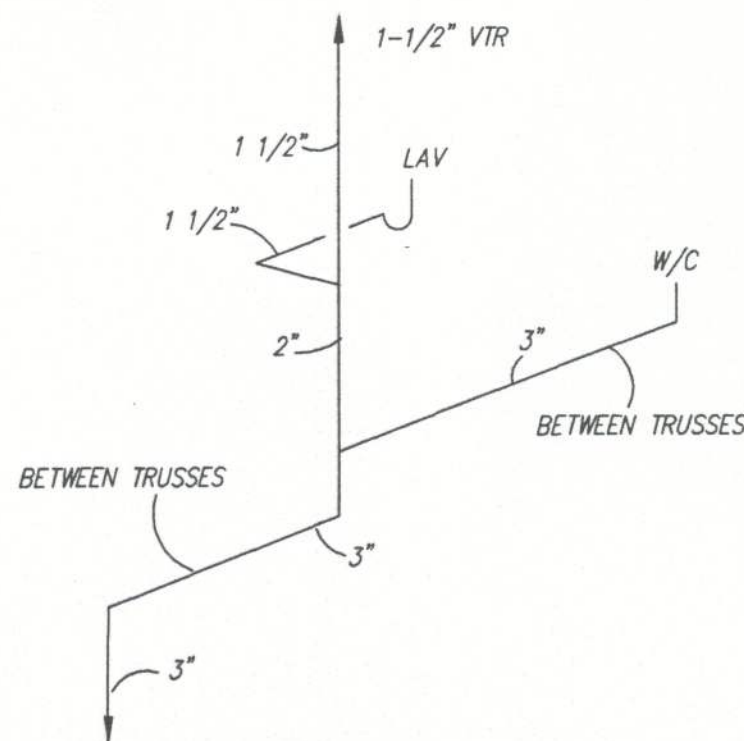
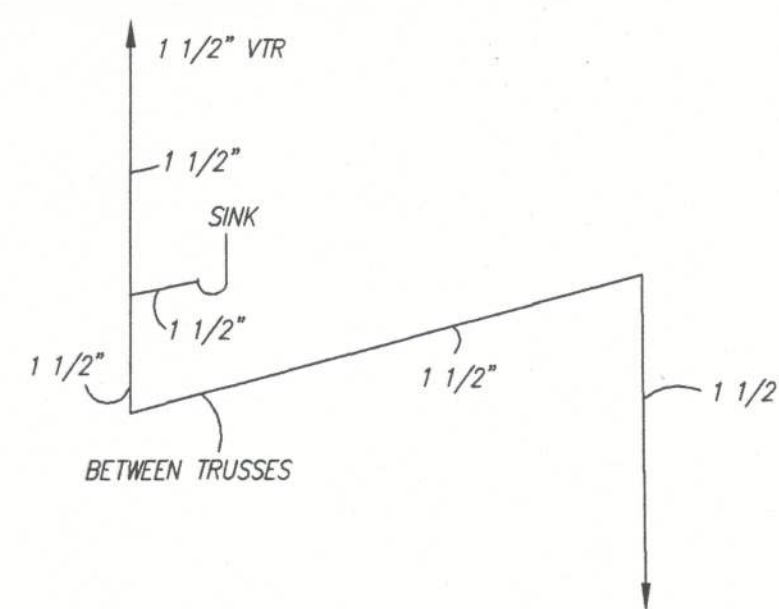
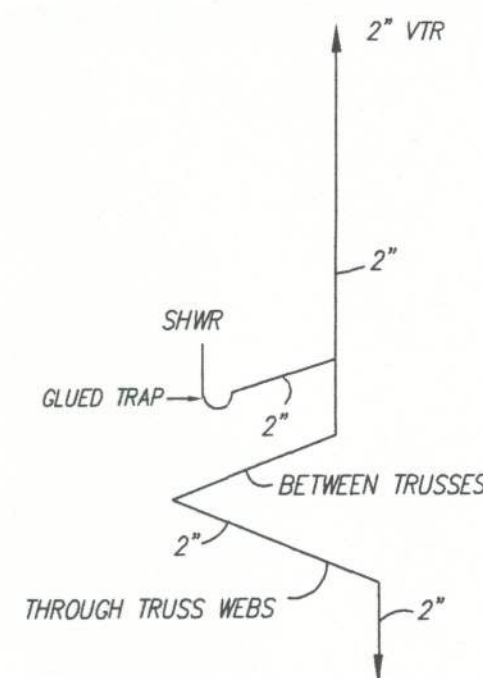
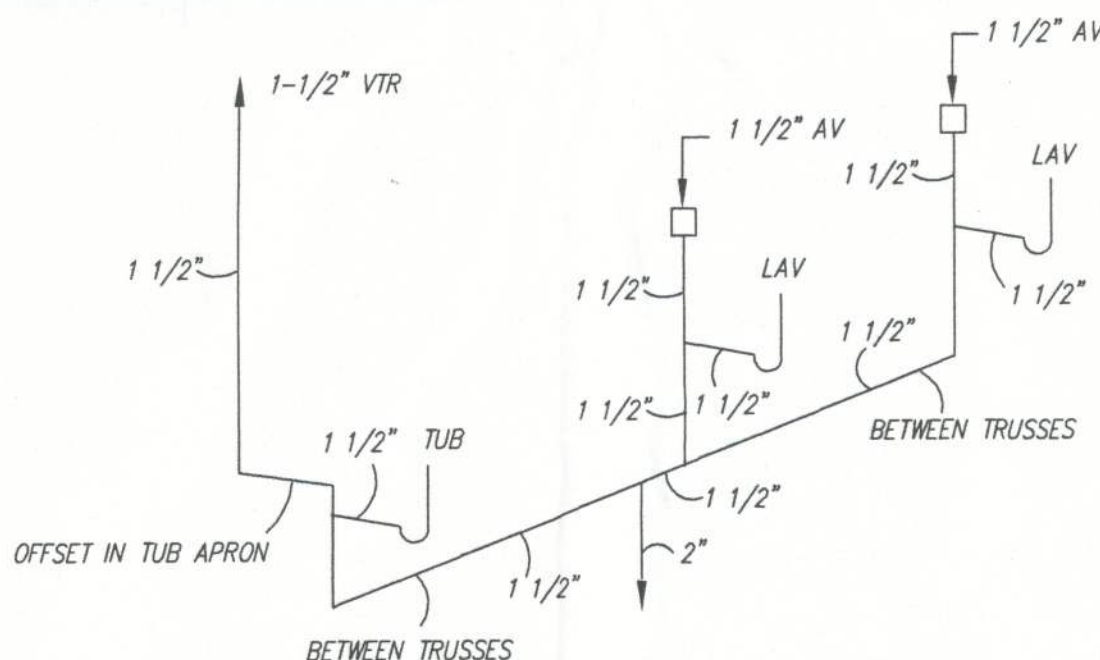
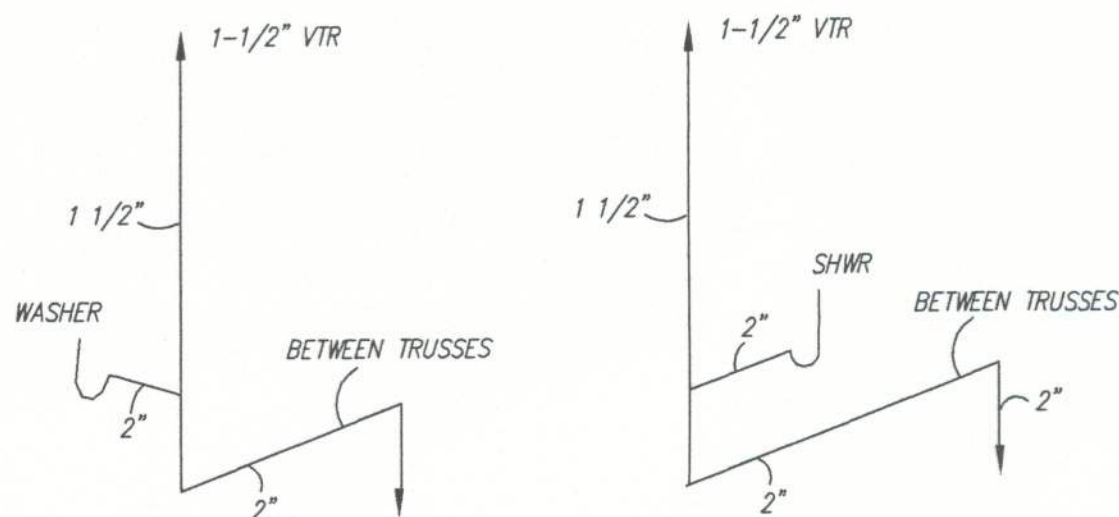


PLUMBING NOTES:

1. Tub access provided under home unless otherwise noted.
2. All plumbing fixtures shall have separate shut-off valves.
3. Water heater shall have safety pan with 1" drain to exterior. T & P relief valve with drain to exterior. And a shut-off valve within 3 feet on the cold water supply line.
4. DWV system shall be either ABS or PVC-DWV.
5. Water supply lines shall be CPVC (SCH 40 or SDR11) or PEX. Water supply lines may be stubbed through the floor (only) with the on-site installation of all lines below the floor to be in accordance with the specifications on this drawing.
6. Water closets average water usage shall not exceed 1.6 gal./flush.
7. Building drain and cleanouts are designed and site installed by others, subject to local jurisdiction approval. Underfloor trap arms not installed in the factory due to possible in-transit damage are to be site installed in accordance with the specifications on this drawing.
8. An accessible shut off valve shall be provided ahead of the first outlet or branch connection to the service or distribution pipe. This shut-off valve may be site installed.
9. Sinks and lavs shall not use more than 2.2 gal./min @ 60 PSI.
10. Shower heads shall not use more than 2.5 gal./min @ 80 PSI per ANSI Std A 112.18.1M.
11. All showers to have temperature of water controlled by a balanced pressure, thermostatic or combination balanced-pressure/thermostatic valve to limit the water temp. to 120°F (valve to comply w/ASSE 1016 or CSA CAN/CSA-B125).
12. Air admittance valves (AV) shall conform to ASSE 1051. The AV valves shall be located a minimum of 4 inches above the horizontal drain or fixture drain being vented and must be installed in well ventilated spaces or provided with ventilated access doors.
13. When metal water supply lines are installed, water hammer arrestors must also be installed where quick closing valves are utilized (i.e., dishwashers, clothes washers, ice makers or other quick closing devices with solenoid valves). Arrestors must comply with ASSE/ANSI 1010 and must be installed in accordance with the manufacturers instructions.
14. An approved thermal expansion device shall be installed in the water supply system in accordance with the manufacturers installation instructions. (this device is required when backflow preventors, pressure reducing valves, check valves or storage water heaters are installed in the water supply system which may prevent pressure relief in the system)



DWV RISERS NTS

Change in direction in Schedule 40 DWV -PVC and ABS drainage piping shall be made by the appropriate use of 45° (0.785 rad) wyes, quarter bends or long sweep quarter bends, one-sixth, one-eighth, one-sixteenth bends, or by a combination of these or equivalent fittings. Single and double sanitary tees and quarter bends may be used in drainage lines only where the direction of flow is from the horizontal to the vertical.

Short sweeps not less than 3 inches diameter may be used in soil and waste lines where the change in direction of flow is from the horizontal to the vertical and may be for making necessary offsets between the ceiling and the next floor above.

LISTING AGENCY APPROVAL

These prints comply with the Florida Manufactured Building Act of 1979 Construction Code and adhere to the following criteria:

Const. Type VB
Occupancy R-3
Allowable No. of Floors 2
Wind Velocity 150 (3sec.)
Fire Rating of Ext. Walls 0
Plan No. 1R-2198-0012F
Allow. Floor Load 40/30
Approval Date 12-7-97
Manufacturer Townhomes
Approved for High Velocity Hurricane Zone NO
HWC
COA # 1025

TOWN HOMES LLC

P.O. BOX 1059
LAKE CITY, FLORIDA 32056

DATE: 11/21/06	REVISIONS:	DRAWN BY:
CODES: FBC	11/30/07	C.A. Leblanc
LABELS: FL		
SCALE: NTS		
MODEL: 2901-1001 PLUMBING DWV	PLAN NO. TH-2R	SHEET 7 OF 12
WILLIAM J. KALKER, JR., P.E. CONSULTING ENGINEER P.E. LICENSE #33841	33 ROCKWOOD LANE MONROE, CT 06468 (203) 261-1167	