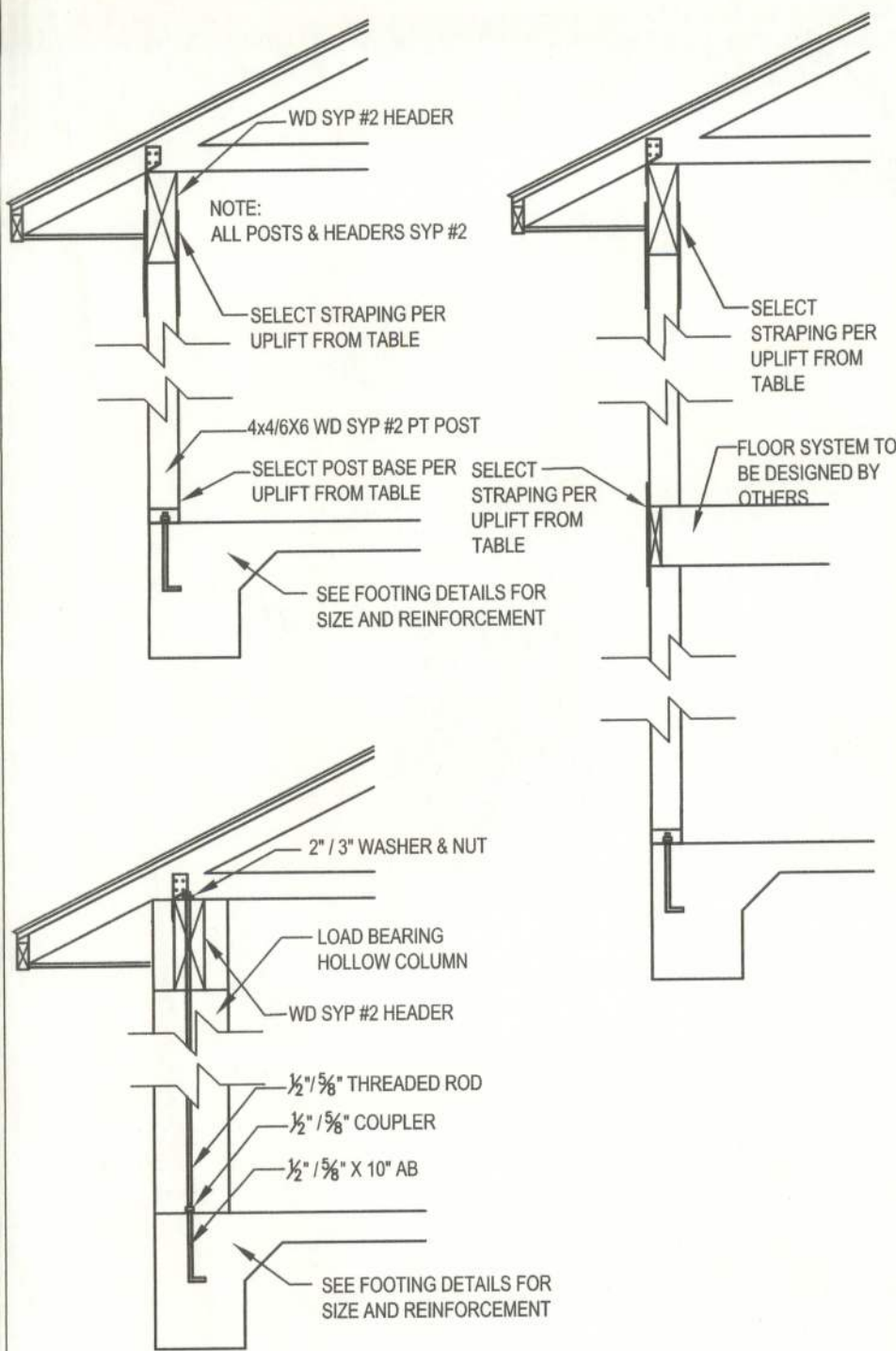


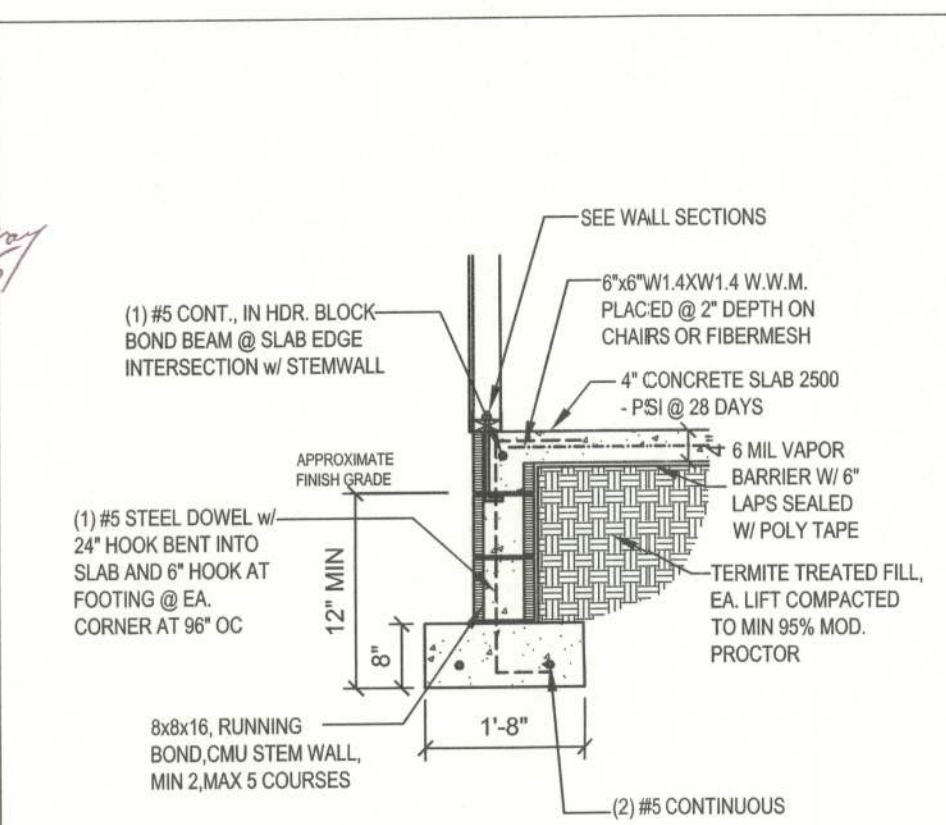
TYPICAL TRUSS UPLIFT & MAX 10'-0" WALL HEIGHT	ANCHOR BOLT SPACING	SP4 / SP6 SPACING	ALTERNATE SPACING
770 LB	48" O.C.	48" O.C.	N/A
950 LB	48" O.C.	32" O.C.	N/A
1270 LB	32" O.C.	16" O.C.	32" O.C.
1500 LB	24" O.C.	16" O.C.	16" O.C.
2200 LB	LTT101 W/ 5/8" X 7" WEDGE ANCHOR	N/A	(2) HTS20 NAILED TO STUD PACK

W1 - SINGLE STORY EXT. WALL SECTION
SCALE: 1/2"=1'-0" REV-22-AUG-03

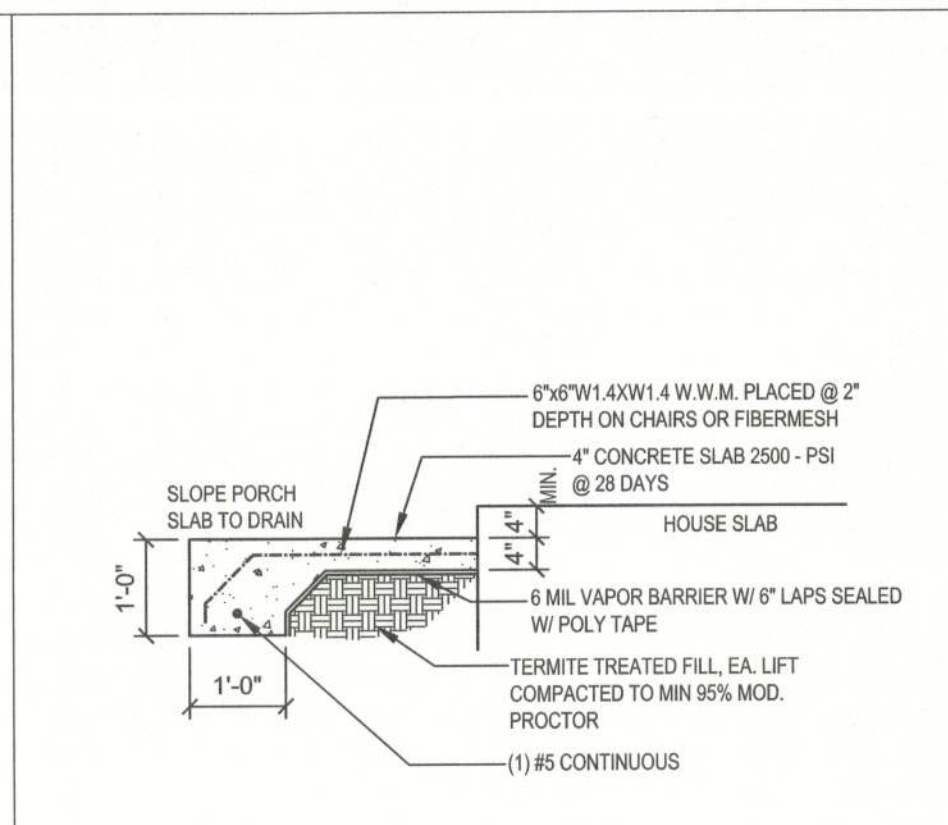


TYPICAL TRUSS UPLIFT	POST BASE ANCHOR	BETWEEN FLOOR STRAPPING	HEADER STRAPPING
550 LB	AB44 W/ (8)-10x4 1/2" AB	(2) LST421 W/ (8)-10x4 EA.	(2) LST421 W/ (8)-10x4 EA.
720 LB	AB46 W/ (8)-10x4 1/2" AB	(2) LST421 W/ (8)-10x4 EA.	(2) LST421 W/ (8)-10x4 EA.
2200 LB	AB44 W/ (12)-10x4 1/2" AB	(2) LST421 W/ (8)-10x4 EA.	(2) LST421 W/ (8)-10x4 EA.
2300 LB	AB44 W/ (12)-10x4 1/2" AB	(2) LST421 W/ (8)-10x4 EA.	(2) LST421 W/ (8)-10x4 EA.

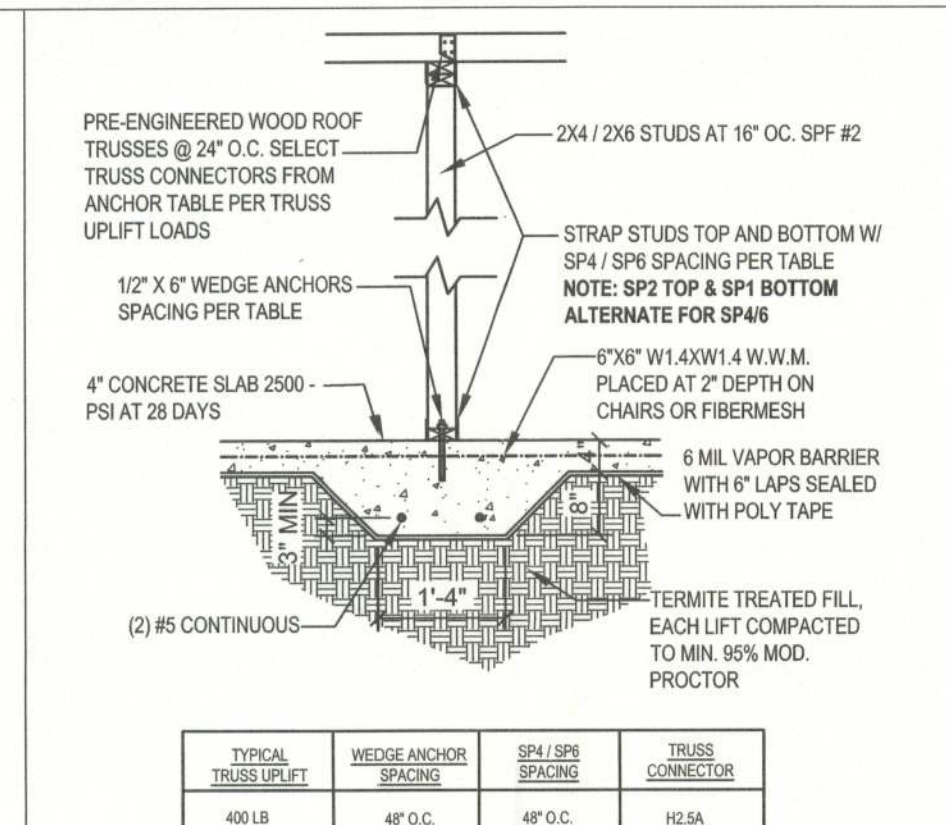
W12 - PORCH HEADER ANCHORS
SCALE: N.T.S. REV-18-JUL-03



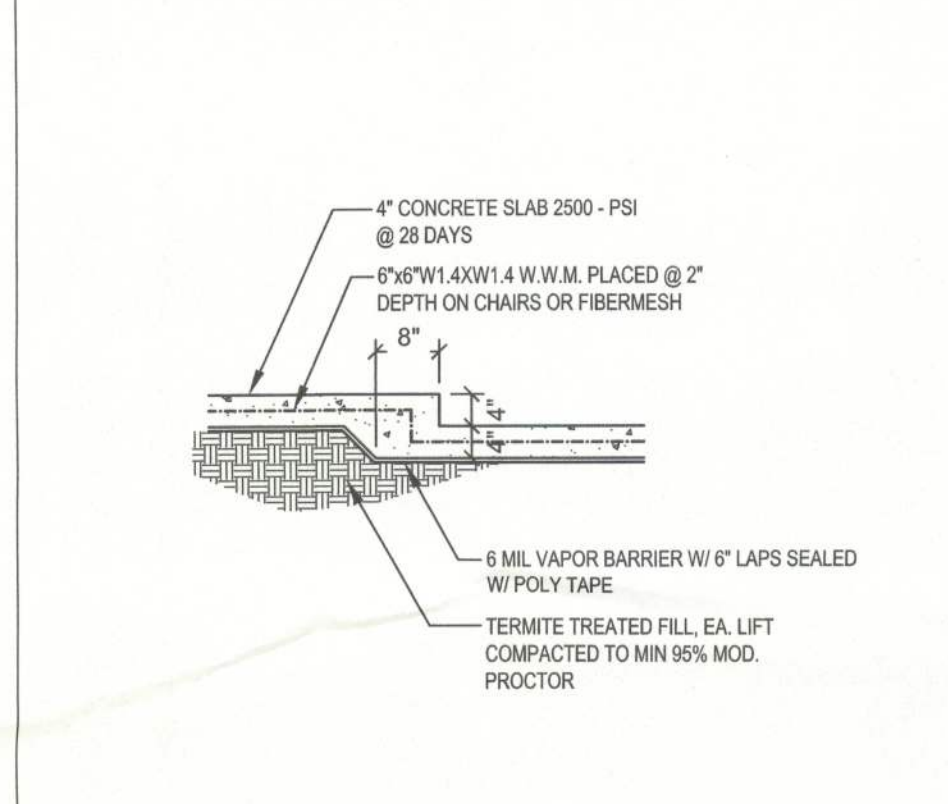
F39 - STEM WALL FOUNDATION
SCALE: 1/2"=1'-0" REV-27-SEP-05



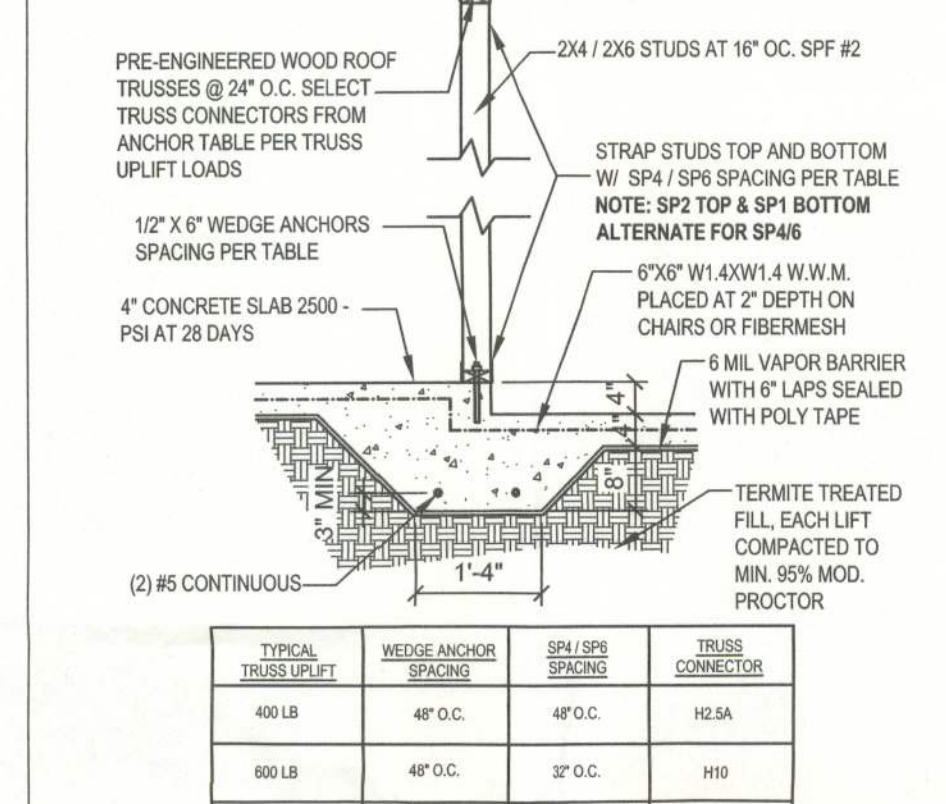
F2 - PORCH SLAB
SCALE: 1/2"=1'-0" REV-22-AUG-03



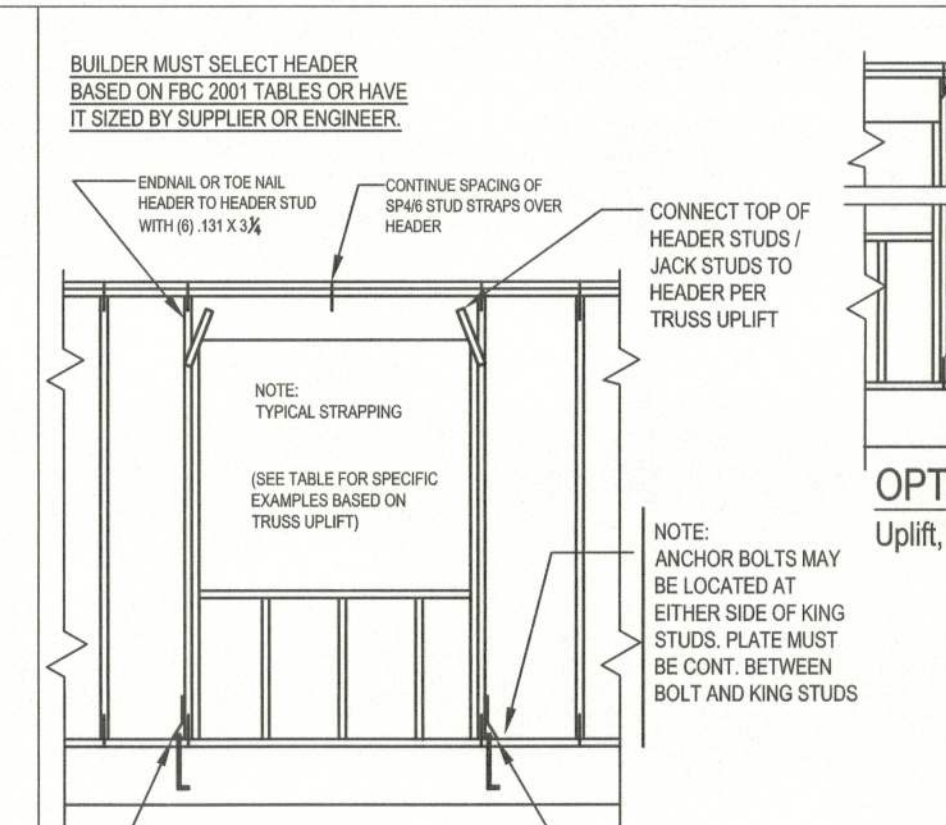
F4 - INTERIOR BEARING FOOTING
SCALE: 1/2"=1'-0" REV-22-AUG-03



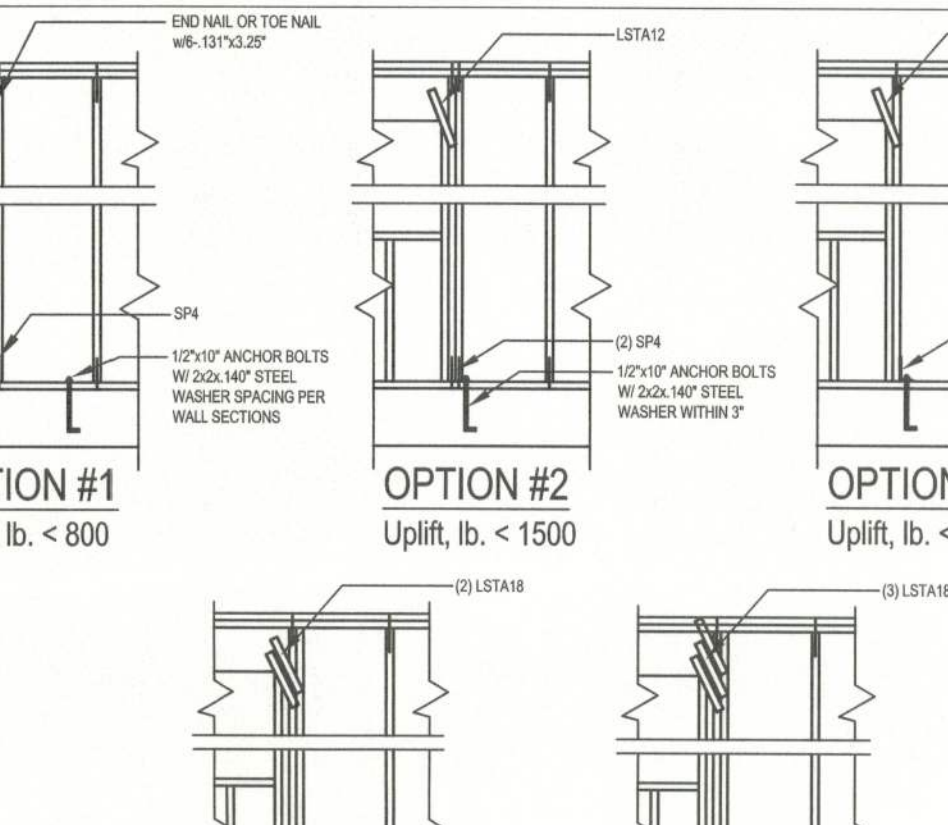
F12 - NON - BEARING STEP FOOTING
SCALE: 1/2"=1'-0" REV-08-JAN-05



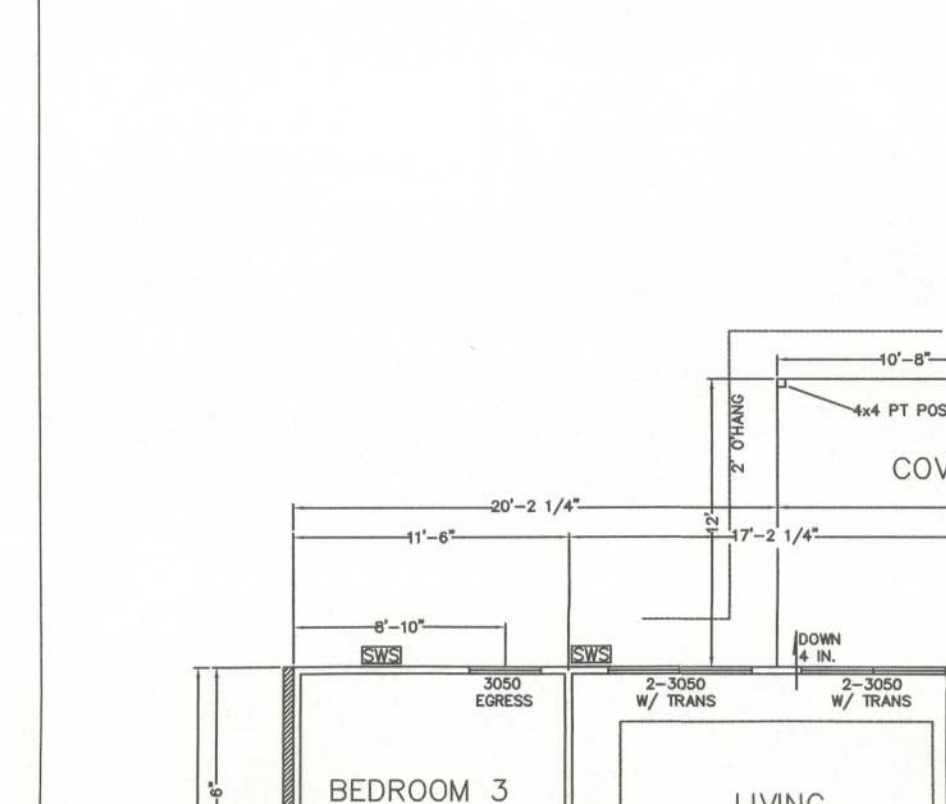
F5 - INTERIOR BEARING STEP FOOTING
SCALE: 1/2"=1'-0" REV-22-AUG-03



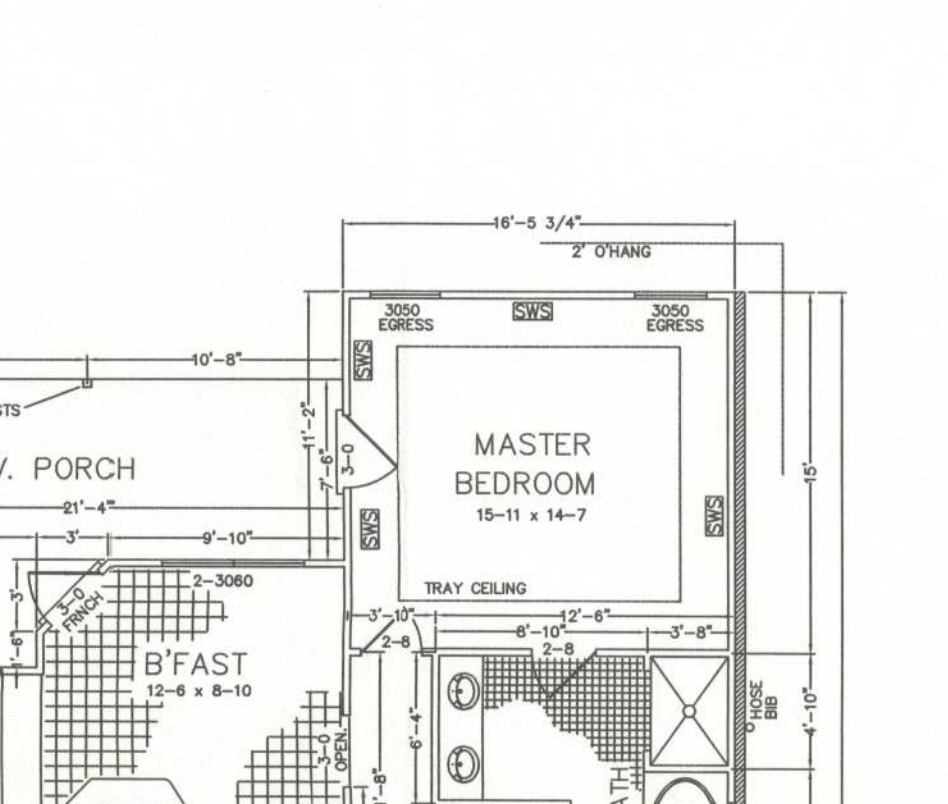
W13-TYPICAL HEADER SIZING & STRAPING DETAIL
SCALE: N.T.S. REV-22-AUG-03



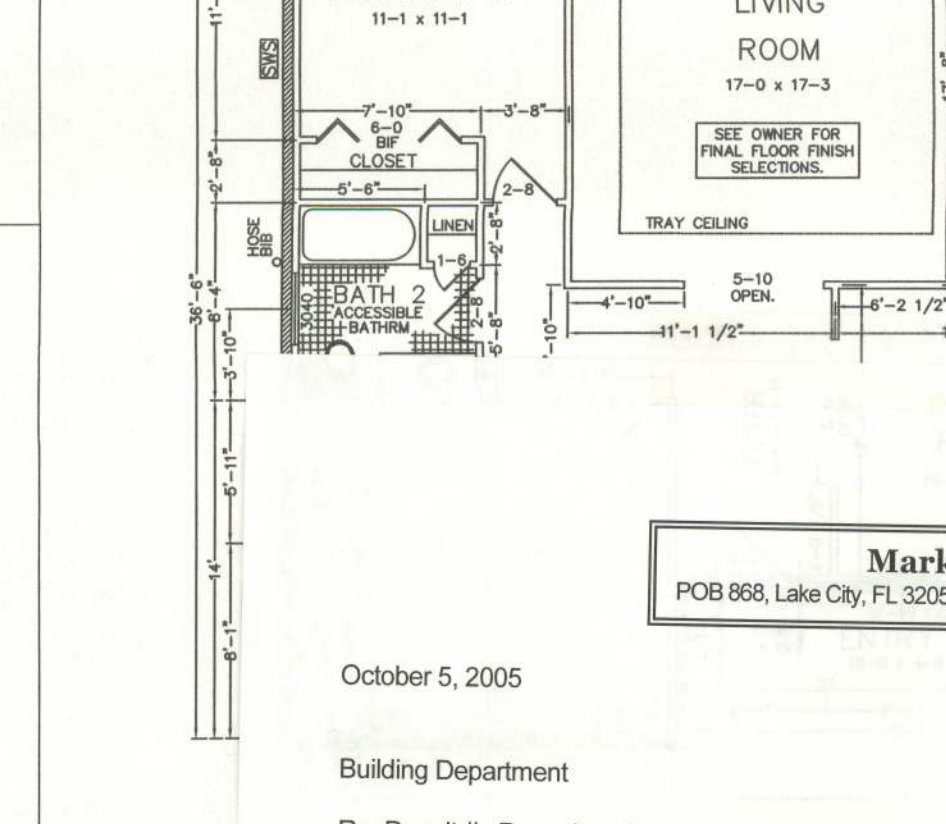
W13-TYPICAL HEADER SIZING & STRAPING DETAIL
SCALE: N.T.S. REV-22-AUG-03



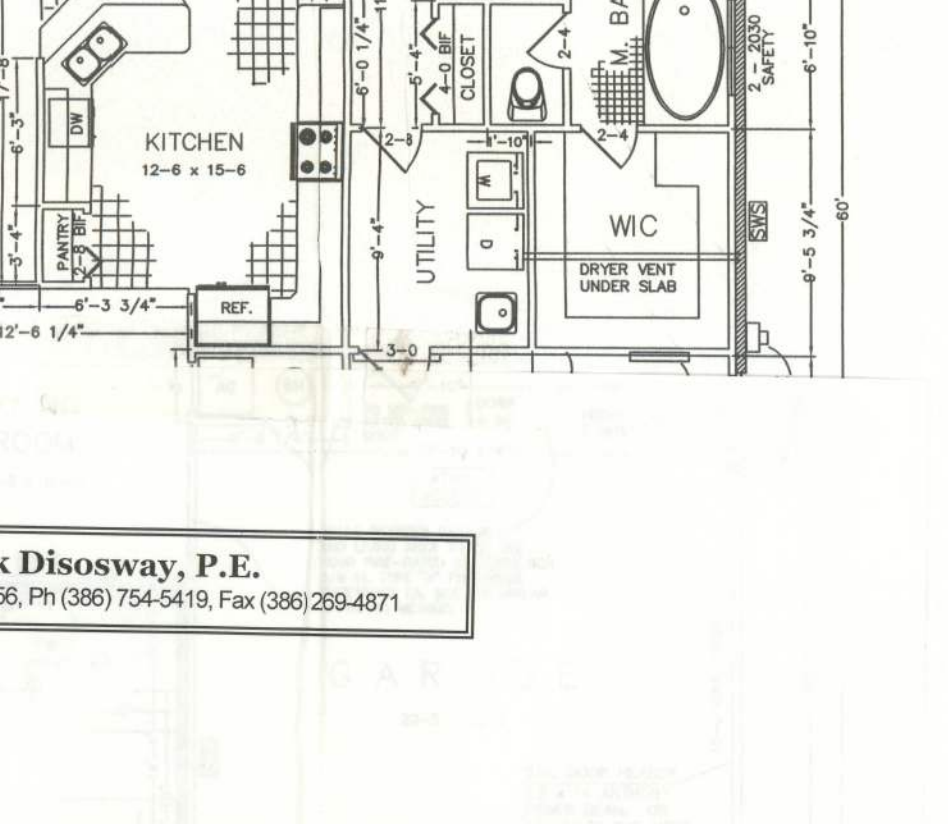
W13-TYPICAL HEADER SIZING & STRAPING DETAIL
SCALE: N.T.S. REV-22-AUG-03



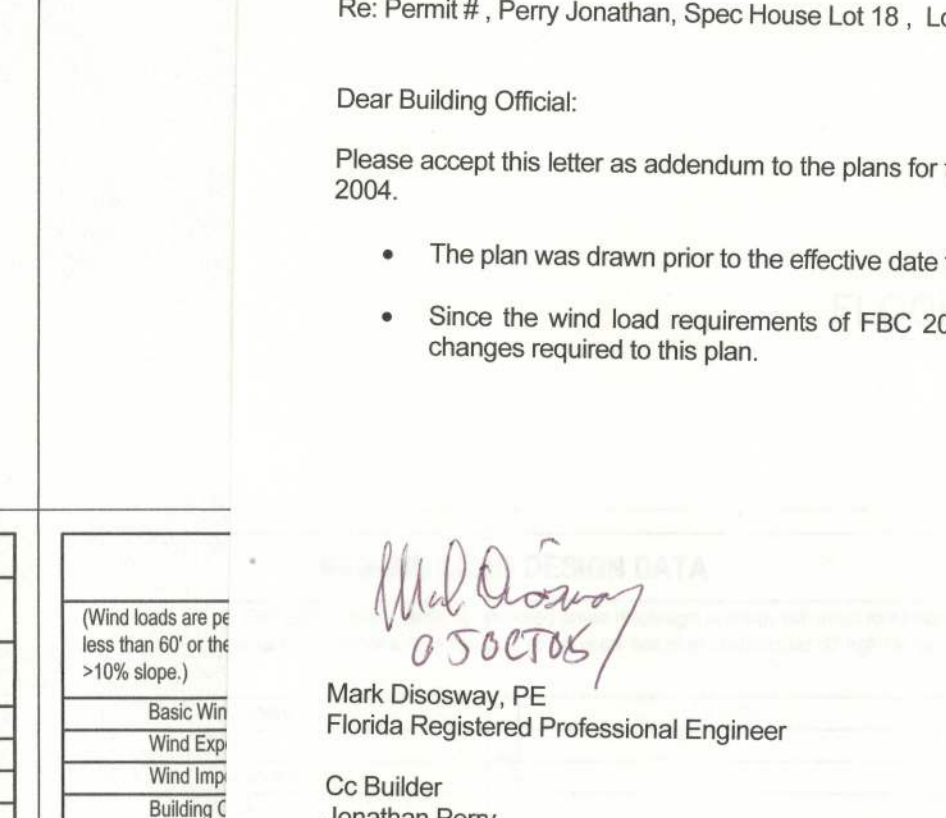
W13-TYPICAL HEADER SIZING & STRAPING DETAIL
SCALE: N.T.S. REV-22-AUG-03



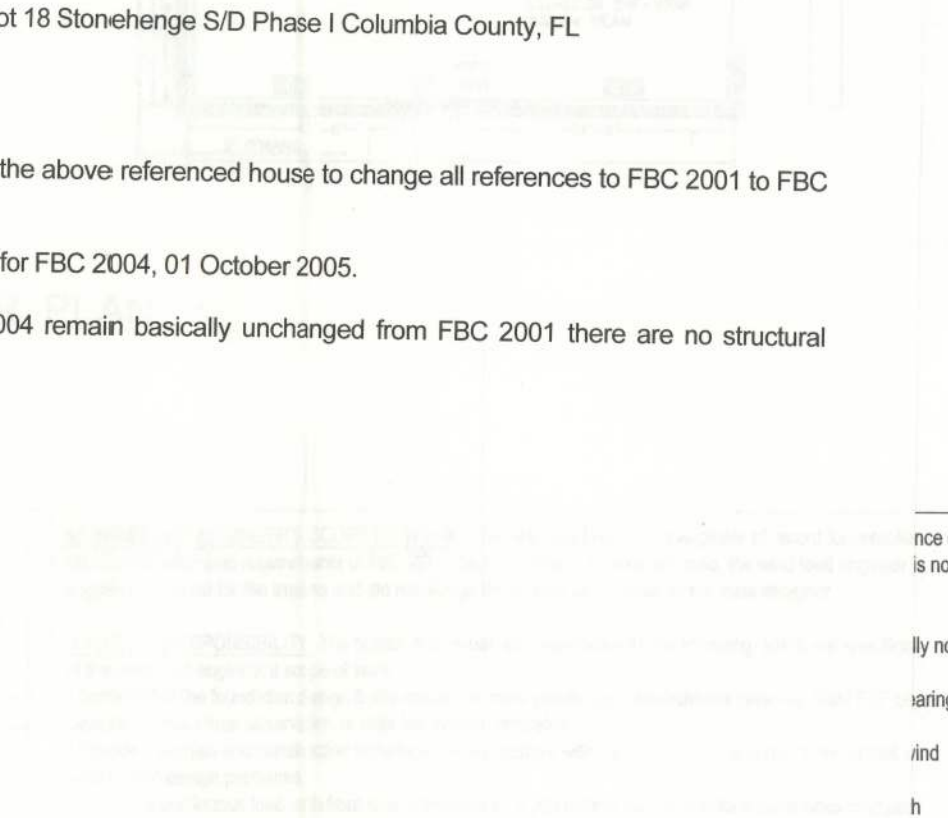
W13-TYPICAL HEADER SIZING & STRAPING DETAIL
SCALE: N.T.S. REV-22-AUG-03



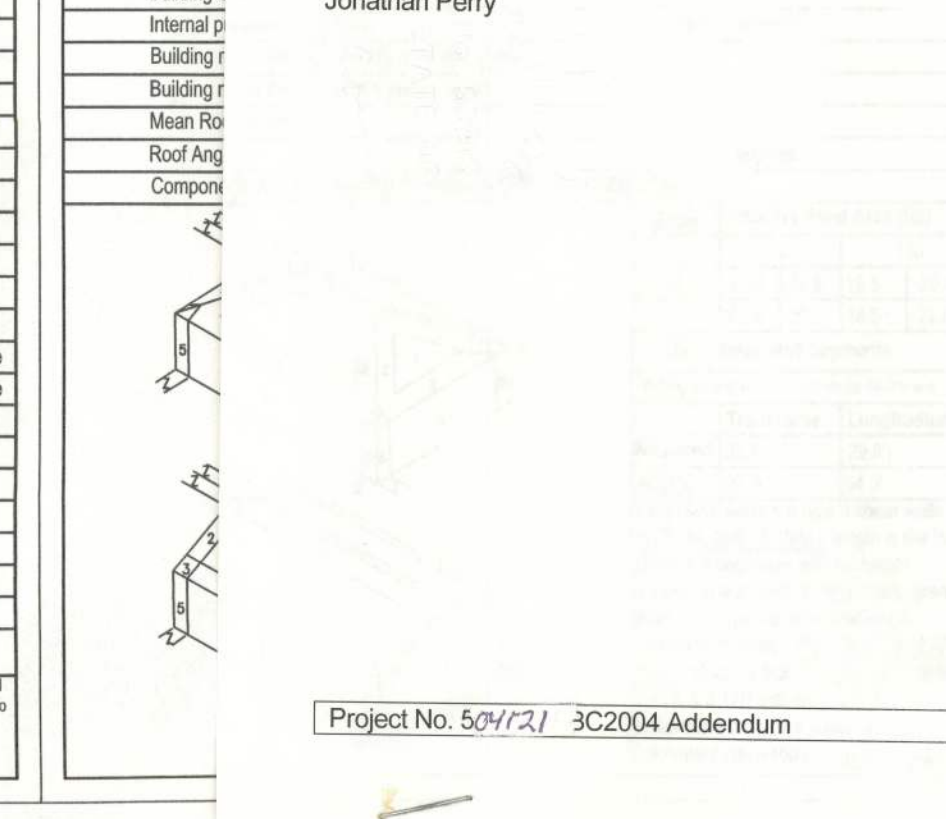
W13-TYPICAL HEADER SIZING & STRAPING DETAIL
SCALE: N.T.S. REV-22-AUG-03



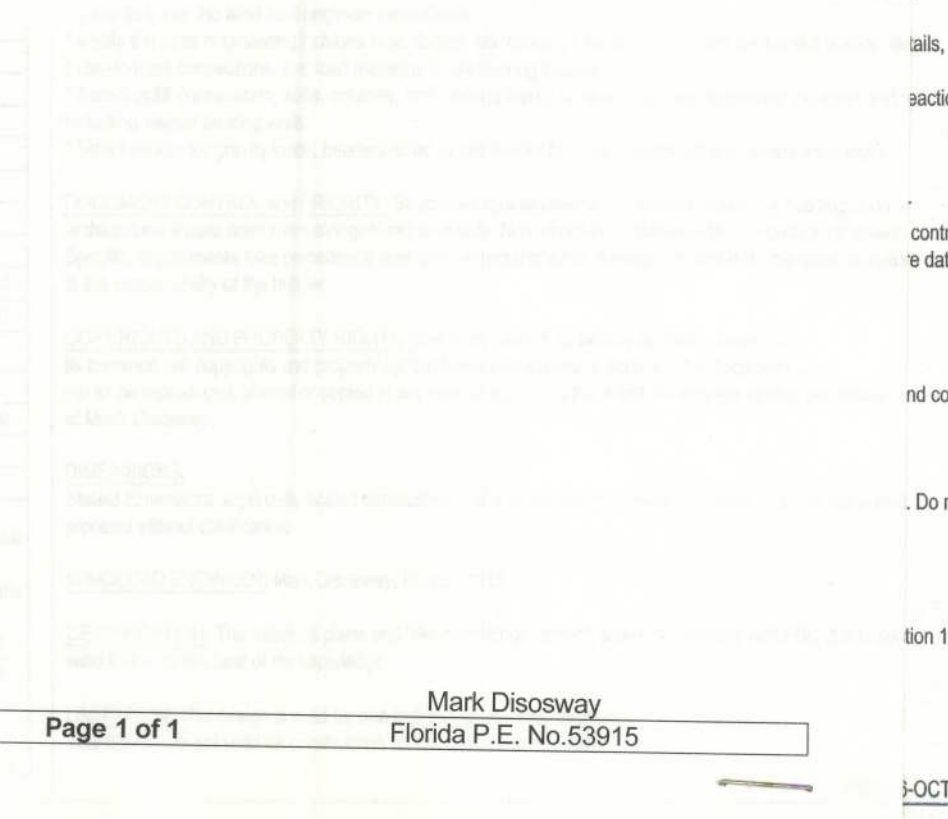
W13-TYPICAL HEADER SIZING & STRAPING DETAIL
SCALE: N.T.S. REV-22-AUG-03



W13-TYPICAL HEADER SIZING & STRAPING DETAIL
SCALE: N.T.S. REV-22-AUG-03



W13-TYPICAL HEADER SIZING & STRAPING DETAIL
SCALE: N.T.S. REV-22-AUG-03



W13-TYPICAL HEADER SIZING & STRAPING DETAIL
SCALE: N.T.S. REV-22-AUG-03

Option #	Uplift, lb.	Top Connector	Bottom Connector
#1	< 800	End nail or toe nail w/ 13"x3.25"	SP4, 6-10x1 1/2"
#2	< 1500	LSTA12, 10-10d	SP4, 6-10x1 1/2"
#3	< 1750	LSTA18, 14-10d	LTT101, 18-10x1 1/2"
#4	< 2500	LTT101, 18-10x1 1/2"	LTT101, 18-10x1 1/2"
#5	< 3885	LTT101, 18-10x1 1/2"	LTT101, 18-10x1 1/2"

W13-TYPICAL HEADER SIZING & STRAPING DETAIL
SCALE: N.T.S. REV-22-AUG-03

Header Spans (ft)	Building Width / Truss Span (ft)
20	28
28	36
36	44
44	52
52	60
60	68
68	76
76	84
84	92
92	100
100	108
108	116
116	124
124	132
132	140
140	148
148	156
156	164
164	172
172	180
180	188
188	196
196	204
204	212
212	220
220	228
228	236
236	244
244	252
252	260
260	268
268	276
276	284
284	292
292	300
300	308
308	316
316	324
324	332
332	340
340	348
348	356
356	364
364	372
372	380
380	388
388	396
396	404
404	412
412	420
420	428
428	436
436	444
444	452
452	460
460	468
468	476
476	484
484	492
492	500
500	508
508	516
516	524
524	532
532	540
540	548
548	556
556	564
564	572
572	580
580	588
588	596
596	604
604	612
612	620
620	628
628	636
636	644
644	652
652	660
660	668
668	676
676	684
684	692
692	700
700	708
708	716
716	724
724	732
732	740
740	748
748	756
756	764
764	772
772	780
780	788
788	796
796	804
804	812
812	820
820	828
828	836
836	844
844	852
852	860
860	868
868	876
876	884
884	892
892	900
900	908
908	916
916	924
924	932
932	940
940	948
948	956
956	964
964	972
972	980
980	988
988	996
996	1004
1004	1012
1012	1020
1020	1028
1028	1036
1036	1044
1044	1052
1052	1060
1060	1068
1068	1076
1076	1084
1084	1092
1092	1100
1100	1108
1108	1116
1116	1124
1124	1132
1132	1140
1140	1148
1148	1156
1156	1164
1164	1172
1172	1180
1180	1188
1188	1196
1196	1204
1204	1212
1212	1220
1220	1228
1228	1236
1236	1244
1244	1252
1252	1260
1260	1268
1268	1276
1276	1284
1284	1292
1292	1300
1300	1308
1308	1316
1316	1324
1324	1332
1332	1340
1340	1348
1348	1356
1356	1364
1364	1372
1372	1380
1380	1388
1388	1396
1396	1404
1404	1412
1412	1420
1420	1428
1428	1436
1436	1444
1444	1452
1452	1460
1460	1468
1468	1476
1476	1484
1484	1492
1492	1500
1500	1508
1508	1516
1516	1524
1524	1532
1532	1540
1540	1548
1548	1556
1556	1564
1564	1572
1572	1580
1580	1588
1588	1596
1596	1604
1604	1612
1612	1620
1620	1628
1628	1636
1636	1644
1644	1652
1652	1660
1660	1668
1668	1676
1676	1684
1684	1692
1692	1700
1700	1708
1708	1716
1716	1724
1724	1732
1732	1740
1740	1748
1748	1756
1756	1764
1764	1772
1772	1780
1780	1788
1788	1796
1796	1804
1804	1812
1812	1820
1820	1828
1828	1836
1836	1844
1844	1852
1852	1860
1860	1868
1868	1876
1876	1884
1884	1892
1892	1900
1900	1908
1908	1916
1916	1924
1924	1932
1932	1940
1940	1948
1948	1956
1956	1964
1964	1972
1972	1980
1980	1988
1988	1996
1996	2004
2004	2012
2012	2020
2020	2028
2028	2036
2036	2044
2044	2052
2052	2060
2060	2068
2068	2076
2076	2084
2084	2092
2092	2100
2100	2108
2108	2116
2116	2124
2124	2132
2132	2140
2140	2148
2148	2156
2156	2164
2164	2172
2172	2180
2180	2188
2188	2196
2196	2204
2204	2212
2212	2220
2220	2228
2228	2236
2236	2244
2244	2252
2252	2260
2260	2268
2268	2276
2276	2284
2284	2292
2292	2300
2300	2308
2308	2316
2316	2324
2324	2332
2332	2340
2340	2348
2348	2356
2356	2364