

SUWANNEE VALLEY FARMS PHASE 2

IN SECTION 29, TOWNSHIP 2 SOUTH, RANGE 16 EAST
COLUMBIA COUNTY, FLORIDA

DEVELOPER
Dewitt Limited Partnership
P.O. Box 300
Columbia, FL 32956
PH: (386) 750-0585

C7
P=450.00'
L=118.24'
A=112.34°41'

C8
P=450.00'
L=118.24'
A=112.34°41'

C9
P=450.00'
L=118.24'
A=112.34°41'

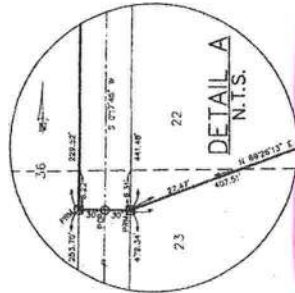
C10
P=450.00'
L=118.24'
A=112.34°41'

C11
P=450.00'
L=118.24'
A=112.34°41'

C12
P=450.00'
L=118.24'
A=112.34°41'

LINE	BEARING	DISTANCE	AREA	PERIMETER
1	N 89°42'39" E	452.02'	5.01 ACRES	2671.21'
2	N 89°42'39" E	452.02'	5.01 ACRES	2671.21'
3	N 89°42'39" E	452.02'	5.01 ACRES	2671.21'
4	N 89°42'39" E	452.02'	5.01 ACRES	2671.21'
5	N 89°42'39" E	452.02'	5.01 ACRES	2671.21'
6	N 89°42'39" E	452.02'	5.01 ACRES	2671.21'
7	N 89°42'39" E	452.02'	5.01 ACRES	2671.21'
8	N 89°42'39" E	452.02'	5.01 ACRES	2671.21'
9	N 89°42'39" E	452.02'	5.01 ACRES	2671.21'
10	N 89°42'39" E	452.02'	5.01 ACRES	2671.21'
11	N 89°42'39" E	452.02'	5.01 ACRES	2671.21'
12	N 89°42'39" E	452.02'	5.01 ACRES	2671.21'
13	N 89°42'39" E	452.02'	5.01 ACRES	2671.21'
14	N 89°42'39" E	452.02'	5.01 ACRES	2671.21'
15	N 89°42'39" E	452.02'	5.01 ACRES	2671.21'
16	N 89°42'39" E	452.02'	5.01 ACRES	2671.21'
17	N 89°42'39" E	452.02'	5.01 ACRES	2671.21'
18	N 89°42'39" E	452.02'	5.01 ACRES	2671.21'
19	N 89°42'39" E	452.02'	5.01 ACRES	2671.21'
20	N 89°42'39" E	452.02'	5.01 ACRES	2671.21'
21	N 89°42'39" E	452.02'	5.01 ACRES	2671.21'
22	N 89°42'39" E	452.02'	5.01 ACRES	2671.21'
23	N 89°42'39" E	452.02'	5.01 ACRES	2671.21'
24	N 89°42'39" E	452.02'	5.01 ACRES	2671.21'
25	N 89°42'39" E	452.02'	5.01 ACRES	2671.21'
26	N 89°42'39" E	452.02'	5.01 ACRES	2671.21'
27	N 89°42'39" E	452.02'	5.01 ACRES	2671.21'
28	N 89°42'39" E	452.02'	5.01 ACRES	2671.21'
29	N 89°42'39" E	452.02'	5.01 ACRES	2671.21'
30	N 89°42'39" E	452.02'	5.01 ACRES	2671.21'
31	N 89°42'39" E	452.02'	5.01 ACRES	2671.21'
32	N 89°42'39" E	452.02'	5.01 ACRES	2671.21'
33	N 89°42'39" E	452.02'	5.01 ACRES	2671.21'
34	N 89°42'39" E	452.02'	5.01 ACRES	2671.21'
35	N 89°42'39" E	452.02'	5.01 ACRES	2671.21'
36	N 89°42'39" E	452.02'	5.01 ACRES	2671.21'
37	N 89°42'39" E	452.02'	5.01 ACRES	2671.21'
38	N 89°42'39" E	452.02'	5.01 ACRES	2671.21'
39	N 89°42'39" E	452.02'	5.01 ACRES	2671.21'
40	N 89°42'39" E	452.02'	5.01 ACRES	2671.21'
41	N 89°42'39" E	452.02'	5.01 ACRES	2671.21'

NOTE: Areas along Suwannee Valley Road not adjacent to this development, may become temporarily submerged during times of highwater and/or river flooding, making access an issue.

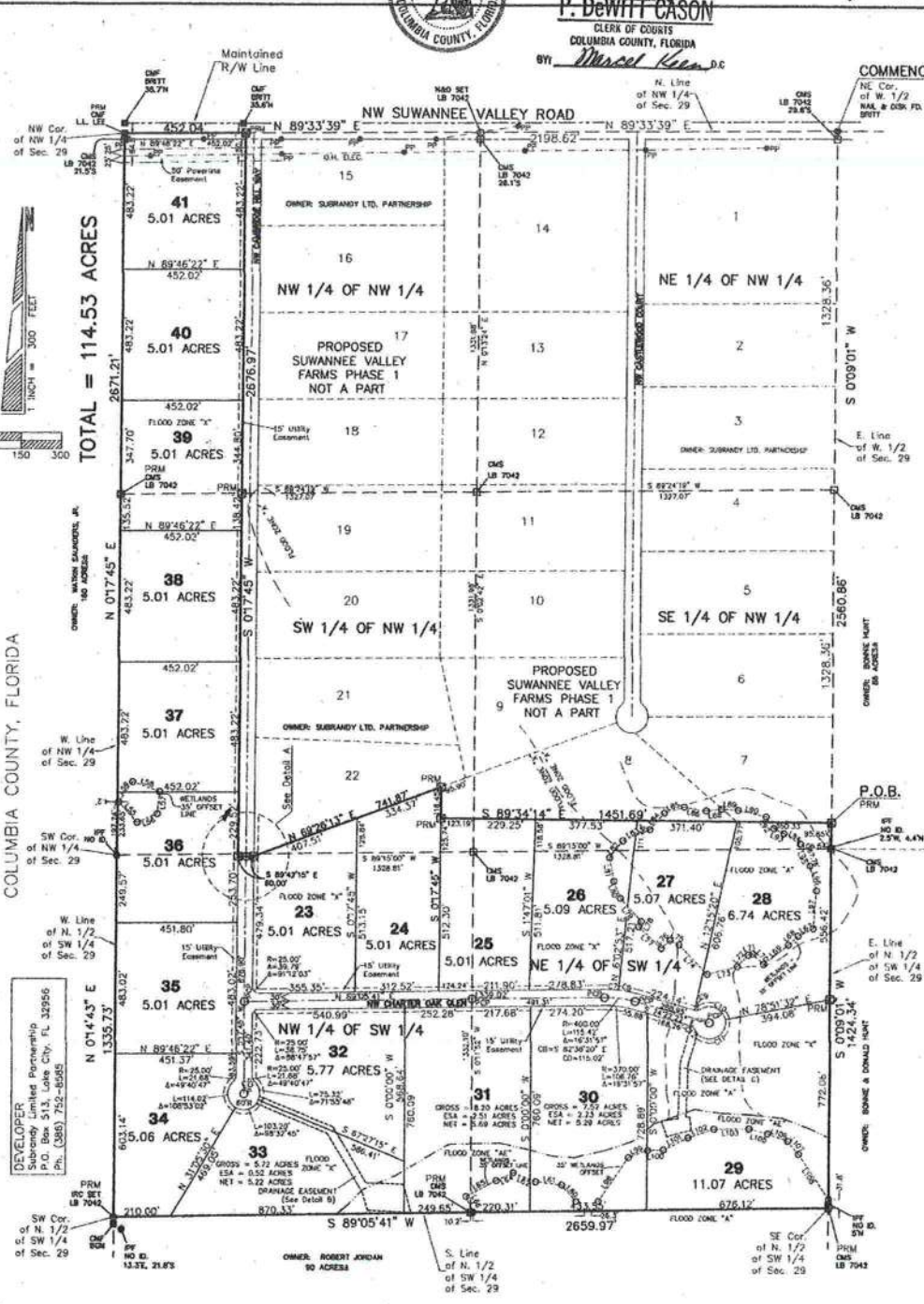
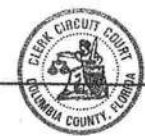


LOT	MIN. FLOOR ELEV.
25	972.0
26	972.0
27	972.0
28	972.0
29	970.0
30	970.0
31	970.0
32	970.0

Lot 34 has NO min. floor elevation

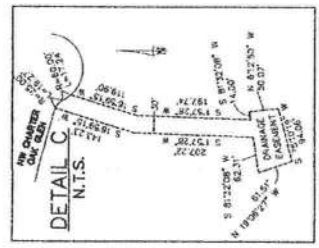
FILE NUMBER **2006000 398**
FILED AND RECORDED IN THE OFFICIAL RECORDS
OF COLUMBIA COUNTY, FLORIDA
1/6 2006 AT 10:00 O'CLOCK P.M.
RECORDED UNDER
P. DEWITT CASON
CLERK OF COURTS
COLUMBIA COUNTY, FLORIDA
BY: **Marcus Kim D.C.**

OFFICIAL RECORDS
BOOK PAGE
1070/1200



DESCRIPTION:
Commence at the Northwest corner of the West 1/2 of Section 29, Township 2 South, Range 16 East, Columbia County, Florida, and run South 00°00'00" East along the East line of the West 1/2 of Section 29 a distance of 2560.86 feet to the POINT OF BEGINNING; thence South 00°00'00" East along the East line of the West 1/2 of Section 29 a distance of 1424.34 feet to the Southeast corner of the North 1/2 of the West 1/2 of Section 29; thence South 89°05'41" West along the South line of said North 1/2 of the West 1/2 of Section 29 a distance of 2659.97 feet to the Southwest corner of said North 1/2 of the West 1/2 of Section 29; thence North 00°14'45" East along the Southwest corner of the Northwest 1/4 of Section 29, Section 29, a distance of 1333.73 feet to the Northwest corner of the Northwest 1/4 of Section 29; thence North along the North line of said Northwest 1/4 of Section 29 a distance of 452.04 feet; thence North 00°17'05" West a distance of 2676.87 feet; thence South 89°42'39" East a distance of 80.00 feet; thence North 69°29'13" East a distance of 1451.68 feet to the POINT OF BEGINNING. Containing 114.53 acres, more or less.

SURVEYOR'S CERTIFICATE
I, **Donald F. Lee**, do hereby certify that I am a duly licensed and qualified Surveyor of the State of Florida and that I have personally supervised and made under my direct supervision the survey and plat hereon and that the same conform to the provisions of the Statutes of the State of Florida relating to the Surveyors' Oath and Chapter 27 of the Florida Statutes.



SHEET 1 OF 2
Donald F. Lee and Associates, Inc.
SURVEYORS
140 Northwest Rogge Road, Lake City, Florida 32755
Phone: (386) 750-6166 FAX: (386) 750-6167
www.dfls.com

PLAT DATE: **12/18/2005**