

GENERAL:

T1.C TITLE SHEET

LIFE SAFTEY:

LSP.1 LIFE SAFTEY

CIVIL:

C1.C SITE PLAN LAYOUT

OWNER:

F1.C FIXTURE PLAN

ARCHITECTURAL:

A1.C FLOOR PLAN  
A2.C EXTERIOR ELEVATIONS  
A3.C SECTIONS AND DETAILS  
A4.C SCHEDULES  
A5.C DOOR DETAILS  
A6.C RESTROOM PLAN & DETAILS  
A7.C SIGN DETAILS  
A8.C SIGN BRACING DETAILS  
A9.C REFLECTED CEILING PLAN

STRUCTURAL:

S1.C STRUCTURAL NOTES  
S2.C CONCRETE SUMMARY  
S3.C RETROPLATE WORK ORDER  
S4a.D FOUNDATION PLAN  
S4b.D STRUCTURAL DETAILS AND NOTES

ELECTRICAL:

E1.C POWER PLAN  
E2.C LIGHTING PLAN  
E3.1.C POWER POLE AND POWER TERMINAL DETAILS  
E3.2.C POWER POLE DETAILS  
E4.C REGISTER DATA ROUTING PLAN  
E5.1.C ELECTRICAL PANEL CRITERIA (3 PHASE)  
EMS1.C EMS/LOW VOLTAGE PLAN  
EMS2.C CPU TERMINAL DIAGRAM  
EMS3.C EMS PANEL AND CONTROLS  
EMS4.C EMS PANEL AND CONTROLS

MECHANICAL:

M1.C HVAC LAYOUT & SCHEDULE

PLUMBING:

P1.C PLUMBING PLANS  
P2.C PLUMBING DETAILS & RISER DIAGRAMS

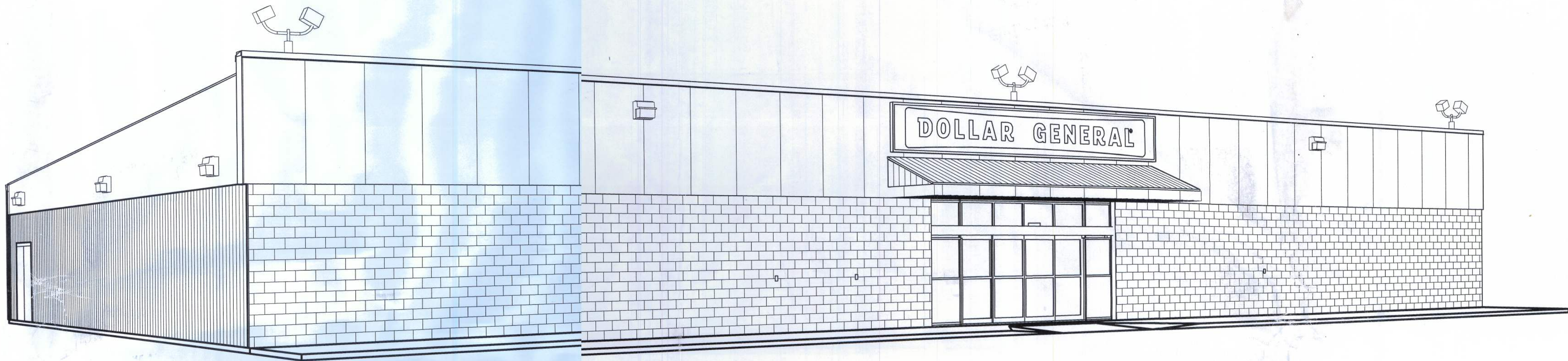
OCCUPANCY CLASSIFICATION: B  
CONSTRUCTION TYPE: MERCANTILE  
WIND LOADS: 110 mph  
BASIC WIND SPEED: 100 MPH  
WIND IMPORTANCE FACTOR: 1.0  
EXPOSURE TYPE: C

CODES TO BE ADHERED TO AT TIME OF CONSTRUCTION:  
2007 FL BUILDING CODE, BUILDING (WITH 2009 REV)  
2007 FL BUILDING CODE, FUEL GAS (WITH 2009 REV)  
2007 FL BUILDING CODE, MECHANICAL (WITH 2009 REV)  
2007 FL BUILDING CODE, PLUMBING (WITH 2009 REV)  
2007 FIRE PREVENTION CODE  
2008 NATIONAL ELECTRIC CODE.

SQUARE FOOTAGE LEGEND	
TOTAL SQUARE FOOTAGE	9,100 S.F.
TOTAL LEASABLE FOOTAGE	9,100 S.F.
OVERALL BUILDING DIMENSIONS	130'-0" x 70'-0"
SALES FLOOR DIMENSIONS	107'-4" x 68'-0"
SALES AREA	7,310 S.F.
RECEIVING AREA	983 S.F.
BREAK RM. & OFFICE AREA	149 S.F.
REST ROOM, & HALL AREA	265 S.F.
MISCELLANEOUS	393 S.F.

NOTES:  
1. BUILDING MUST COMPLY WITH ALL BUILDING (FEDERAL, STATE AND LOCAL), FIRE, ADA AND HEALTH DEPARTMENT CODES.  
2. NO TAPERED OR INTERIOR COLUMNS ALLOWED.  
3. MAINTAIN INTERIOR CLEAR SALES SPACE AS REQUIRED ON PLANS.

130'-0 x 70'-0" PROTOTYPE "C"  
SIDE ENTRY WITH LEFT REAR DELIVERY  
RELEASE 8/18/2010



ALL DEVELOPERS MUST SUBMIT COMPLETE ARCHITECTURAL PLANS PRIOR TO PERMITTING, AND AGAIN PRIOR TO CONSTRUCTION FOR DOLLAR GENERAL APPROVAL. SUBMIT PLANS TO BTSPANS@DOLLARGENERAL.COM AND IDENTIFY WHETHER THE PLANS ARE BEING SUBMITTED FOR PERMITTING RELEASE OR CONSTRUCTION RELEASE.

SHOULD THE DEVELOPER USE THIS CRITERIA SET FOR CONSTRUCTION, EMAIL BTSPANS@DOLLARGENERAL.COM AND LIST THE PROJECT CITY, STATE, STORE NUMBER, WHICH PROTOTYPE (A-F), AND THE DATE OF THE PLANS WHICH YOU ARE USING.

ALL PROTOTYPICAL PLAN INQUIRIES TO BE DIRECTED TO THE DOLLAR GENERAL STORE DESIGN DEPARTMENT AT (615)55-4753 OR EMAIL TO BTSPANS@DOLLARGENERAL.COM

ALL SUBMITTALS MUST INCLUDE THE ARCHITECT'S CERTIFICATION LETTER ITEMIZING ALL DEVIATIONS FROM THIS SET AND EXPLANATIONS.

THIS BUILDING DOES NOT REQUIRE FIRE SPRINKLER SYSTEM.

REQUIRED NATIONAL ACCOUNT VENDORS			
COMPANY	CONTACTS	PHONE #	REQUIRED ITEMS
BASS SECURITY SERVICES, INC.	NATIONAL ACCOUNT SALES	888-774-3400 EXT. 925	DOOR HARDWARE AND RESTROOM ACCESSORIES
MC CUE CORPORATION	PRICING - KEVIN O'NEILL ORDERING - BRETT JOHNSON	404-293-7758 koneill@mccuecorp.com 800-800-8503 EXT. 268	TRIM KIT "C" INCLUDES BUMPER GUARDS AND CART STOP
YORK	NATIONAL ACCOUNTS	800-481-9738	HVAC UNITS york-dollargeneral-be@jci.com
CARRIER	TERRIE TRULL	877-501-4432	HVAC UNITS terrie.trull@carrier.utc.com
SHERWIN WILLIAMS	LOCAL SHERWIN WILLIAMS STORE		PAINT, PRIMER, CONCRETE SEALER AND BLOCK FILLER
NABCO ENTRANCES	JANICE GRABOWSKI	262 679-7514 dollargeneral@nabcoentrances.com	AL,AR,AZ,CO,DE,FL,GA,KS,KY,LA,MD,MO,MS,NC,NH,NJ,NM,NY,OK,PA,SC,TN,TX,VA,VT,WV MODEL # GT1175-02
DORMA ENTRANCE SYSTEMS	ELLIOTT SMITH	847 295-2700 dollargeneral@dorma-usa.com	IA,IL,IN,MI,MN,NE,OH,SD,WI MODEL# ESA200
D&P CUSTOM LIGHTING	NATIONAL ACCOUNT SALES	800-251-2200	CUSTOM POWER POLES
EMERSON CLIMATE TECHNOLOGIES	WEBSITE: http://dollargeneralbid.ectolutions.net	USER NAME: dollargeneralbid PASSWORD: dollargeneralbid	EMS SUPPLIER NOTE: CUSTOMIZED DOLLAR GENERAL EMS PANEL REQUIRES STORE #, CITY, STATE, ZIP CODE & QTY. OF HVAC UNITS OF THE INSTALL SITE WHEN ORDERING.
RETROPLATE SYSTEMS	CURTIS TURNBULL	888-942-3144 corporateaccounts@retroplatesystem.com	CONCRETE POLISHING SYSTEMS
HARRIS LIGHTING	SHENNEL JOHNSON	904-284-1220 EXT. 262 sjohnson@harrislights.com	ELECTRICAL LIGHTING SUPPLIES
CED - CONSOLIDATED ELECTRICAL DISTRIBUTORS	ROBERT DECKER	270-781-2229 robertd@cedbgky.com	ELECTRICAL SWITCH GEAR

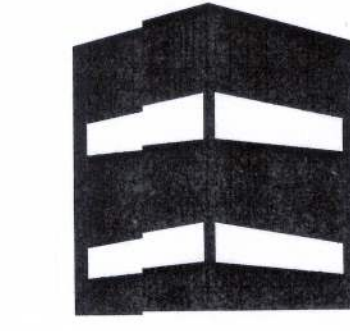
RECOMMENDED NATIONAL ACCOUNT VENDORS			
COMPANY	CONTACTS	PHONE #	
CASCO	JOHN HARRIS WEBSITE: http://www.cascocorp.com	314-821-1100 dollargeneral@cascocorp.com	PROFESSIONAL SERVICES http://www.cascocorp.com/Featured%20Projects/dollargeneralprototype.htm
COMPANY	CONTACTS	PHONE #	
VP BUILDINGS	DAVID ENGLISH	901-748-6103 DEnglish@vp.com	PRE-ENGINEERED METAL BUILDING
STAR BUILDING SYSTEMS	JEFF HORN	866-664-8899	PRE-ENGINEERED METAL BUILDING
NUCOR BUILDING SYSTEMS	BOB BARRY	315-622-4440 CORPORATE: 260-837-7891	PRE-ENGINEERED METAL BUILDING https://www.formrouter.net/forms@MBSIN/dgquote.pdf

NATIONAL ACCOUNT & CONTACT INFORMATION SUBJECT TO CHANGE



NICHOLAS GEISLER ARCHITECT  
1758 NW Brown Road  
Lake City, FL 32055  
386/755-9021  
N.C.A.R.B. Certified  
CASCO  
18970 WATSON ROAD  
LAKE CITY, FL 32055  
PH: 386-55-8887  
FAX: 386-55-1919

DATE: 11-26-2011  
CDWM: AR0007005



CONCEPT CONSTRUCTION

License# CGC1515491  
ph: 386-55-8887  
fx: 386-55-1919  
295 NW Commons Loop  
Suite 11-323  
Lake City, FL 32055  
www.conceptconstruction.net

DOLLAR GENERAL

LAKE CITY, FLORIDA  
COUNTY RD 247, LAKE CITY, FL  
STORE # 12851  
2010 PROTOTYPE - PLAN "C" 9,100

DATE 30 MAR 2010  
Design JFB 06/10/10  
Revisors JFB 08/09/10  
SHEET NUMBER

T1.C

TITLE SHEET