

FOR 2005
“HILLS AT ROSE CREEK”
(PHASES 1 & 2)

Parent Parcel(s) 32-4s-17-08926-000 (delete)

**Parent Parcel 05-5s17-09116-000 150.08 - 111.02 = 39.06
Ac remaining.**

Header Parcel 05-5s17-09116-100

**A S/D of a part of S1/2 of Sec 32-4s-17E & a part of N1/2 of
Sec 5-5s-17E, all lying North of I-75 & East of SW CR-131.
Containing 171.46 Ac & Phs 1 Rec in Plat Bk 7, Pg 150 & Phs 2
Rec in Plat Bk 7, Pg 154.**

Landscape Areas - 32-4s-17-09116-099 0.15 Ac

Lot 1	Phase 2	32-4s-17-09116-101	5.02 Ac
Lot 2	Phase 2	32-4s-17-09116-102	5.01 Ac
Lot 3	Phase 2	05-5s-17-09116-103	5.01 Ac
Lot 4	Phase 2	05-5s-17-09116-104	5.01 Ac
Lot 5	Phase 2	05-5s-17-09116-105	5.01 Ac
- - - - -			
Lot 6	Phase 1	05-5s-17-09116-106	5.11 Ac
Lot 7	Phase 1	05-5s-17-09116-107	8.00 Ac
Lot 8		05-5s-17-09116-108	5.03 Ac
Lot 9		05-5s-17-09116-109	5.02 Ac
Lot 10		05-5s-17-09116-110	5.01 Ac
Lot 11		05-5s-17-09116-111	5.01 Ac
Lot 12		05-5s-17-09116-112	5.01 Ac
Lot 13		05-5s-17-09116-113	5.03 Ac
Lot 14		05-5s-17-09116-114	6.24 Ac
Lot 15		05-5s-17-09116-115	5.03 Ac
Lot 16		05-5s-17-09116-116	5.08 Ac
Lot 17		05-5s-17-09116-117	5.01 Ac
Lot 18		05-5s-17-09116-118	5.01 Ac
Lot 19		05-5s-17-09116-119	5.01 Ac
Lot 20		05-5s-17-09116-120	5.03 Ac
Lot 21		05-5s-17-09116-121	5.01 Ac
Lot 22		05-5s-17-09116-122	5.01 Ac

Lot 23		32-4s-17-09116-123	5.01 Ac
Lot 24		32-4s-17-09116-124	5.01 Ac
Lot 25		32-4s-17-09116-125	5.01 Ac
Lot 26		32-4s-17-09116-126	5.01 Ac
Lot 27		32-4s-17-09116-127	5.01 Ac
Lot 28	Phase 1	32-4s-17-09116-128	5.01 Ac
Lot 29	Phase 2	32-4s-17-09116-129	5.01 Ac
Lot 30	Phase 2	32-4s-17-09116-130	5.01 Ac
Lot 31	Phase 2	32-4s-17-09116-131	5.01 Ac

OFFICIAL RECORDS
BOOK 122 PAGE 1229

FILE NUMBER 2004000-709
FILED AND RECORDED IN THE OFFICIAL RECORDS
OF COLUMBIA COUNTY, FLORIDA
2/19, 1982 AT 12:52 P.M.
RECORD VERIFIED
P. DEWITT CASON
CLERK OF COURTS
COLUMBIA COUNTY, FLORIDA
BY: *M. C. Cason*



FLOOD NOTICE:
THE FOLLOWING LOTS ARE AFFECTED BY
THE 100 YEAR FLOOD ELEVATION
THE 100 YEAR FLOOD ELEVATION IS 86.50 FEET FOR
LOTS: 6, 7, 8, 9, 10, 11, 12, 13, 14, 15, AND 16.
THE 100 YEAR FLOOD ELEVATION IS 108.50 FEET FOR
LOTS: 27 AND 28
THE 100 YEAR FLOOD ELEVATION IS 105.50 FEET FOR
LOT: 22 AND 23

"HILLS AT ROSE CREEK"

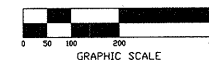
IN SECTION 32, TOWNSHIP 4 SOUTH, RANGE 17 EAST, AND
SECTION 5, TOWNSHIP 5 SOUTH, RANGE 17 EAST,
COLUMBIA COUNTY, FLORIDA

PLAT BOOK **7**
PAGES **151**
SHEET 2 OF 4

SYMBOL LEGEND

- PERMANENT REFERENCE MONUMENT
- PERMANENT CONTROL POINT
- TYP TYPICAL

SCALE: 1" = 200'



CURVE TABLE

NO.	RADIUS	DELTA	ARC	TANGENT	CHORD	CHORD BEARING
1	25.00'	90°00'00"	25.00'	25.00'	35.36'	N22°36'21"E
2	360.00'	61°46'35"	388.15'	215.35'	369.62'	S36°43'03"E
3	330.00'	96°39'11"	333.55'	345.35'	477.91'	S21°17'14"E
4	360.00'	30°51'39"	193.90'	99.37'	191.57'	S09°56'04"E
5	300.00'	08°55'07"	46.44'	23.66'	46.39'	S02°33'30"E
6	320.00'	31°51'29"	299.54'	166.79'	283.10'	N00°54'47"E
7	300.00'	43°05'14"	225.60'	118.44'	220.33'	S05°23'50"E
8	25.00'	90°00'00"	25.00'	25.00'	35.36'	N67°23'30"E
9	300.00'	90°00'00"	39.27'	23.06'	35.36'	N67°23'30"E
10	300.00'	14°50'06"	77.68'	39.06'	77.46'	S60°11'18"E
11	300.00'	62°01'15"	424.08'	242.08'	376.79'	S17°56'11"E
12	360.00'	17°07'28"	107.60'	54.20'	107.20'	S16°28'09"E
13	360.00'	22°07'47"	139.05'	70.40'	138.18'	S23°09'28"E
14	360.00'	12°46'02"	79.81'	40.07'	78.64'	S20°34'24"E
15	300.00'	62°01'15"	324.74'	180.33'	309.12'	N57°56'05"E
16	320.00'	62°01'15"	357.21'	193.37'	340.03'	N57°56'05"E
17	360.00'	31°25'53"	197.49'	101.30'	195.02'	S42°38'23"E
18	25.00'	91°34'10"	29.55'	25.69'	35.84'	S43°42'19"E
19	360.00'	82°51'40"	40.74'	34.38'	52.38'	N68°36'06"E
20	1930.00'	20°03'42"	675.77'	341.38'	672.32'	N65°14'05"E
21	390.00'	19°33'46"	133.16'	67.23'	132.51'	N56°17'25"E
22	1870.00'	09°32'44"	311.54'	156.13'	311.18'	S77°57'44"E
23	1900.00'	11°35'08"	395.25'	198.34'	394.53'	S62°39'08"E
24	1900.00'	46°06'10"	1386.10'	731.30'	1364.98'	S67°53'37"E
25	1900.00'	30°11'02"	1000.94'	512.37'	989.40'	S61°56'03"E
26	1870.00'	08°41'42"	272.30'	138.20'	271.66'	N51°01'24"E
27	1870.00'	07°12'26"	235.22'	117.77'	235.07'	N58°48'27"E
28	1870.00'	10°46'43"	351.79'	176.41'	351.27'	S67°48'01"E
29	1870.00'	08°02'06"	101.44'	50.88'	100.84'	N65°54'41"E
30	360.00'	30°35'23"	192.20'	98.45'	189.93'	N73°39'01"E
31	360.00'	25°15'44"	165.01'	83.88'	163.57'	S66°06'07"E
32	1930.00'	02°48'33"	94.63'	47.32'	94.62'	S48°14'49"E
33	330.00'	26°15'44"	151.26'	76.98'	149.26'	S60°37'06"E
34	1930.00'	04°11'39"	142.99'	71.33'	142.26'	S60°37'06"E
35	390.00'	06°41'58"	45.60'	22.83'	45.58'	S69°45'17"E
36	470.00'	16°53'44"	138.59'	69.80'	138.08'	S82°08'57"E
37	500.00'	16°53'44"	147.44'	74.26'	146.91'	N83°11'06"E
38	530.00'	16°53'44"	156.29'	78.77'	155.76'	N81°33'08"E
39	25.00'	49°40'47"	21.68'	11.57'	21.00'	S79°06'40"E
40	60.00'	65°45'47"	68.87'	38.79'	65.15'	N73°12'06"E
41	60.00'	107°55'41"	113.04'	82.50'	97.05'	S19°56'40"E
42	60.00'	105°39'06"	110.64'	79.12'	95.62'	S86°31'14"E
43	25.00'	49°40'47"	21.68'	11.57'	21.00'	S65°09'36"E
44	25.00'	89°14'09"	36.39'	21.68'	33.65'	S39°47'49"E
45	25.00'	88°55'50"	38.59'	24.32'	34.87'	N26°07'11"E
46	300.00'	20°30'12"	107.35'	54.26'	106.78'	N80°35'12"E
47	330.00'	20°30'12"	118.09'	59.68'	117.46'	N80°35'12"E
48	360.00'	20°30'12"	128.63'	65.1'	128.14'	N80°35'12"E
49	60.00'	49°40'47"	21.68'	11.57'	21.00'	S79°06'40"E
50	60.00'	106°52'59"	111.93'	80.91'	96.39'	N85°23'59"E
51	60.00'	110°55'39"	116.16'	87.18'	98.85'	N67°30'21"E
52	300.00'	23°12'48"	121.54'	61.62'	120.71'	S79°12'45"E
53	25.00'	90°00'00"	25.00'	25.00'	35.36'	S02°36'21"E
54	2300.00'	22°18'13"	128.46'	65.05'	127.65'	S79°40'02"E
55	270.00'	21°59'03"	103.60'	52.44'	102.96'	S79°30'27"E
56	60.00'	61°32'56"	64.45'	35.73'	61.40'	S70°15'23"E
57	60.00'	49°40'47"	21.68'	11.57'	21.00'	S79°06'40"E
58	300.00'	26°55'45"	141.00'	71.83'	139.71'	N31°33'37"E
59	330.00'	26°55'45"	155.10'	79.01'	153.66'	N31°33'37"E
60	360.00'	26°55'45"	168.20'	86.12'	167.65'	N31°33'37"E
61	25.00'	49°40'47"	21.68'	11.57'	21.00'	N69°51'53"E
62	60.00'	125°22'32"	131.29'	116.62'	130.62'	N50°01'01"E
63	60.00'	62°46'27"	69.93'	39.54'	66.04'	N64°03'29"E
64	60.00'	87°12'36"	91.33'	57.15'	82.76'	S88°57'00"E
65	25.00'	49°40'47"	21.68'	11.57'	21.00'	S79°06'40"E
66	300.00'	62°01'15"	324.74'	180.33'	309.12'	S57°56'05"E
67	1930.00'	08°15'36"	209.18'	104.59'	208.43'	S79°06'40"E
68	270.00'	15°01'36"	70.81'	35.61'	70.61'	S76°01'44"E
69	270.00'	06°57'27"	32.79'	16.41'	32.77'	S87°01'15"E

LINE TABLE

Line	Bearing	Distance
L1	S86°56'42"E	8363'
L2	S14°50'07"E	67.91'
L3	S44°31'54"E	124.23'
L4	S71°33'53"E	100.56'
L5	S88°49'17"E	60.54'
L6	S81°21'23"E	136.43'
L7	N68°36'10"E	88.56'
L8	N80°25'25"E	149.30'
L9	S62°39'41"E	97.31'
L10	N41°07'05"E	130.34'
L11 - L15	REMOVED	
L16	N05°08'29"E	304.99'
L17	N88°21'45"E	48.23'
L18	S86°25'12"E	156.91'
L19	S77°37'43"E	172.98'
L20	N70°41'46"E	76.37'
L21	N76°23'32"E	69.44'
L22	N80°14'40"E	92.68'
L23	N22°32'15"E	143.03'
L24 - L28	REMOVED	
L29	N38°03'29"E	325.95'
L30	S57°59'58"E	40.54'
L31	S66°06'07"E	291.14'
L32	S39°36'00"E	92.39'
L33	S76°26'18"E	65.32'
L34	S62°59'09"E	64.34'
L35	S82°08'57"E	67.91'
L36	N83°11'06"E	52.07'
L37	S56°44'53"E	112.00'
L38	S69°11'02"E	112.96'
L39	S68°50'19"E	70.82'
L40	S79°40'48"E	61.66'
L41	S61°43'21"E	148.14'
L42	N48°45'48"E	88.16'
L43	N04°21'41"E	156.14'
L44	N77°53'06"E	223.81'
L45	N80°32'44"E	164.23'
L46	S84°33'52"E	189.85'
L47	S66°03'21"E	190.71'
L48	S22°03'25"E	196.30'
L49	S86°02'22"E	109.50'
L50	N63°49'06"E	79.96'
L51	N26°43'36"E	102.24'
L52	N20°51'35"E	112.39'
L53	S70°14'59"E	119.38'
L54	N72°50'43"E	89.78'
L55	N00°20'30"E	107.84'



BRITT SURVEYING

LAND SURVEYORS AND MAPPERS

1426 WEST DUVAL STREET
LAKE CITY, FLORIDA 32055

TELEPHONE: (386) 752-7163 FAX: (386) 752-5573 WORK ORDER # L-12564

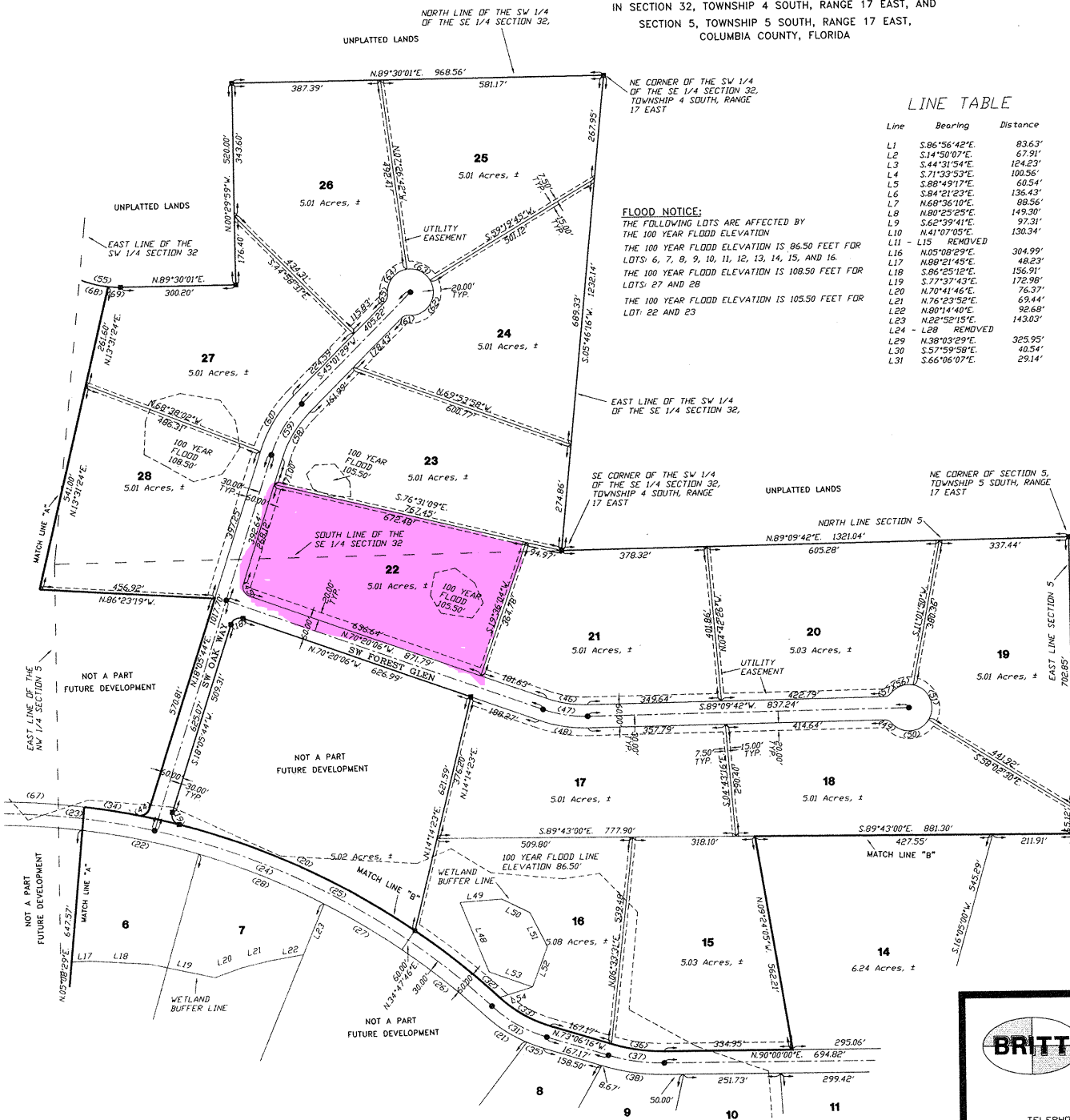
'HILLS AT ROSE CREEK'

IN SECTION 32, TOWNSHIP 4 SOUTH, RANGE 17 EAST, AND
SECTION 5, TOWNSHIP 5 SOUTH, RANGE 17 EAST,
COLUMBIA COUNTY, FLORIDA

PLAT BOOK 7
PAGES 152
SHEET 3 OF 4

OFFICIAL RECORDS
BOOK PAGE 1629

FILE NUMBER 200400270
FILED AND RECORDED IN THE OFFICIAL RECORDS
OF COLUMBIA COUNTY, FLORIDA
ON 10/24/04 AT 2:52 O'CLOCK P.M.
RECORD VERIFIED
P. DEWITT CASON
CLERK OF COURTS
COLUMBIA COUNTY, FLORIDA
BY: *[Signature]*



LINE TABLE

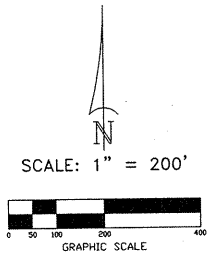
Line	Bearing	Distance
L1	S.86°56'42"E	83.63'
L2	S.14°50'07"E	67.91'
L3	S.44°31'54"E	124.23'
L4	S.71°33'53"E	100.56'
L5	S.88°49'17"E	60.54'
L6	S.84°21'23"E	136.43'
L7	N.68°36'10"E	88.56'
L8	N.80°25'25"E	149.30'
L9	S.62°39'41"E	97.31'
L10	N.41°07'05"E	130.34'
L11	L15 REMOVED	
L16	N.05°08'29"E	304.99'
L17	N.88°21'45"E	48.23'
L18	S.86°25'12"E	156.91'
L19	S.77°37'43"E	172.98'
L20	N.70°41'46"E	76.37'
L21	N.76°23'52"E	69.44'
L22	N.80°14'40"E	92.68'
L23	N.26°52'15"E	143.63'
L24	L28 REMOVED	
L29	N.38°03'29"E	325.95'
L30	S.57°59'58"E	40.54'
L31	S.66°06'07"E	29.14'

LINE TABLE

Line	Bearing	Distance
L32	S.39°36'00"E	92.39'
L33	S.76°26'18"E	65.32'
L34	S.62°59'09"E	64.34'
L35	S.82°02'57"E	67.24'
L36	N.83°11'06"E	52.07'
L37	S.56°44'53"E	112.00'
L38	S.69°11'02"E	112.96'
L39	S.68°50'19"E	70.82'
L40	S.79°40'48"E	61.66'
L41	S.61°43'21"E	148.14'
L42	N.48°45'48"E	88.15'
L43	N.04°21'41"E	156.14'
L44	N.77°53'06"E	223.81'
L45	N.80°32'44"E	164.23'
L46	S.84°33'32"E	189.65'
L47	S.66°03'21"E	190.71'
L48	S.22°03'25"E	196.30'
L49	S.86°02'22"W	109.50'
L50	N.63°49'06"W	79.86'
L51	N.26°43'56"W	100.24'
L52	N.20°51'35"E	112.39'
L53	S.70°14'39"E	119.78'
L54	N.72°50'43"E	85.39'
L55	N.00°20'30"W	107.84'

SYMBOL LEGEND

- PERMANENT REFERENCE MONUMENT
- PERMANENT CONTROL POINT
- TYP TYPICAL



CURVE TABLE

NO.	RADIUS	DELTA	ARC	TANGENT	CHORD	CHORD BEARING
1	25.00'	39.27'	25.00'	35.36'	35.36'	N.22°36'21"W
2	36.00'	61.46°39'	36.00'	36.63'	36.63'	S.36°43'00"E
3	36.00'	30°51'39"	193.90'	191.57'	191.57'	S.21°17'14"E
4	36.00'	30°51'39"	193.90'	99.37'	99.37'	S.00°36'04"W
5	36.00'	30°51'39"	193.90'	160.79'	160.79'	N.00°56'47"W
6	36.00'	30°51'39"	193.90'	289.10'	289.10'	S.20°35'04"E
7	36.00'	30°51'39"	193.90'	35.36'	35.36'	N.67°23'39"E
8	36.00'	30°51'39"	193.90'	35.36'	35.36'	N.67°23'39"E
9	36.00'	30°51'39"	193.90'	35.36'	35.36'	N.67°23'39"E
10	36.00'	30°51'39"	193.90'	35.36'	35.36'	N.67°23'39"E
11	36.00'	30°51'39"	193.90'	35.36'	35.36'	N.67°23'39"E
12	36.00'	30°51'39"	193.90'	35.36'	35.36'	N.67°23'39"E
13	36.00'	30°51'39"	193.90'	35.36'	35.36'	N.67°23'39"E
14	36.00'	30°51'39"	193.90'	35.36'	35.36'	N.67°23'39"E
15	36.00'	30°51'39"	193.90'	35.36'	35.36'	N.67°23'39"E
16	36.00'	30°51'39"	193.90'	35.36'	35.36'	N.67°23'39"E
17	36.00'	30°51'39"	193.90'	35.36'	35.36'	N.67°23'39"E
18	36.00'	30°51'39"	193.90'	35.36'	35.36'	N.67°23'39"E
19	36.00'	30°51'39"	193.90'	35.36'	35.36'	N.67°23'39"E
20	36.00'	30°51'39"	193.90'	35.36'	35.36'	N.67°23'39"E
21	36.00'	30°51'39"	193.90'	35.36'	35.36'	N.67°23'39"E
22	36.00'	30°51'39"	193.90'	35.36'	35.36'	N.67°23'39"E
23	36.00'	30°51'39"	193.90'	35.36'	35.36'	N.67°23'39"E
24	36.00'	30°51'39"	193.90'	35.36'	35.36'	N.67°23'39"E
25	36.00'	30°51'39"	193.90'	35.36'	35.36'	N.67°23'39"E
26	36.00'	30°51'39"	193.90'	35.36'	35.36'	N.67°23'39"E
27	36.00'	30°51'39"	193.90'	35.36'	35.36'	N.67°23'39"E
28	36.00'	30°51'39"	193.90'	35.36'	35.36'	N.67°23'39"E
29	36.00'	30°51'39"	193.90'	35.36'	35.36'	N.67°23'39"E
30	36.00'	30°51'39"	193.90'	35.36'	35.36'	N.67°23'39"E
31	36.00'	30°51'39"	193.90'	35.36'	35.36'	N.67°23'39"E
32	36.00'	30°51'39"	193.90'	35.36'	35.36'	N.67°23'39"E
33	36.00'	30°51'39"	193.90'	35.36'	35.36'	N.67°23'39"E
34	36.00'	30°51'39"	193.90'	35.36'	35.36'	N.67°23'39"E
35	36.00'	30°51'39"	193.90'	35.36'	35.36'	N.67°23'39"E
36	36.00'	30°51'39"	193.90'	35.36'	35.36'	N.67°23'39"E
37	36.00'	30°51'39"	193.90'	35.36'	35.36'	N.67°23'39"E
38	36.00'	30°51'39"	193.90'	35.36'	35.36'	N.67°23'39"E
39	36.00'	30°51'39"	193.90'	35.36'	35.36'	N.67°23'39"E
40	36.00'	30°51'39"	193.90'	35.36'	35.36'	N.67°23'39"E
41	36.00'	30°51'39"	193.90'	35.36'	35.36'	N.67°23'39"E
42	36.00'	30°51'39"	193.90'	35.36'	35.36'	N.67°23'39"E
43	36.00'	30°51'39"	193.90'	35.36'	35.36'	N.67°23'39"E
44	36.00'	30°51'39"	193.90'	35.36'	35.36'	N.67°23'39"E
45	36.00'	30°51'39"	193.90'	35.36'	35.36'	N.67°23'39"E
46	36.00'	30°51'39"	193.90'	35.36'	35.36'	N.67°23'39"E
47	36.00'	30°51'39"	193.90'	35.36'	35.36'	N.67°23'39"E
48	36.00'	30°51'39"	193.90'	35.36'	35.36'	N.67°23'39"E
49	36.00'	30°51'39"	193.90'	35.36'	35.36'	N.67°23'39"E
50	36.00'	30°51'39"	193.90'	35.36'	35.36'	N.67°23'39"E
51	36.00'	30°51'39"	193.90'	35.36'	35.36'	N.67°23'39"E
52	36.00'	30°51'39"	193.90'	35.36'	35.36'	N.67°23'39"E
53	36.00'	30°51'39"	193.90'	35.36'	35.36'	N.67°23'39"E
54	36.00'	30°51'39"	193.90'	35.36'	35.36'	N.67°23'39"E
55	36.00'	30°51'39"	193.90'	35.36'	35.36'	N.67°23'39"E
56	36.00'	30°51'39"	193.90'	35.36'	35.36'	N.67°23'39"E
57	36.00'	30°51'39"	193.90'	35.36'	35.36'	N.67°23'39"E
58	36.00'	30°51'39"	193.90'	35.36'	35.36'	N.67°23'39"E
59	36.00'	30°51'39"	193.90'	35.36'	35.36'	N.67°23'39"E
60	36.00'	30°51'39"	193.90'	35.36'	35.36'	N.67°23'39"E
61	36.00'	30°51'39"	193.90'	35.36'	35.36'	N.67°23'39"E
62	36.00'	30°51'39"	193.90'	35.36'	35.36'	N.67°23'39"E
63	36.00'	30°51'39"	193.90'	35.36'	35.36'	N.67°23'39"E
64	36.00'	30°51'39"	193.90'	35.36'	35.36'	N.67°23'39"E
65	36.00'	30°51'39"	193.90'	35.36'	35.36'	N.67°23'39"E
66	36.00'	30°51'39"	193.90'	35.36'	35.36'	N.67°23'39"E
67	36.00'	30°51'39"	193.90'	35.36'	35.36'	N.67°23'39"E
68	36.00'	30°51'39"	193.90'	35.36'	35.36'	N.67°23'39"E
69	36.00'	30°51'39"	193.90'	35.36'	35.36'	N.67°23'39"E



BRITT SURVEYING

LAND SURVEYORS AND MAPPERS

1426 WEST DUVAL STREET
LAKE CITY, FLORIDA 32055

TELEPHONE: (386) 752-7163 FAX: (386) 752-5573 WORK ORDER # L-12564

"HILLS AT ROSE CREEK"

IN SECTION 32, TOWNSHIP 4 SOUTH, RANGE 17 EAST, AND
SECTION 5, TOWNSHIP 5 SOUTH, RANGE 17 EAST,
COLUMBIA COUNTY, FLORIDA

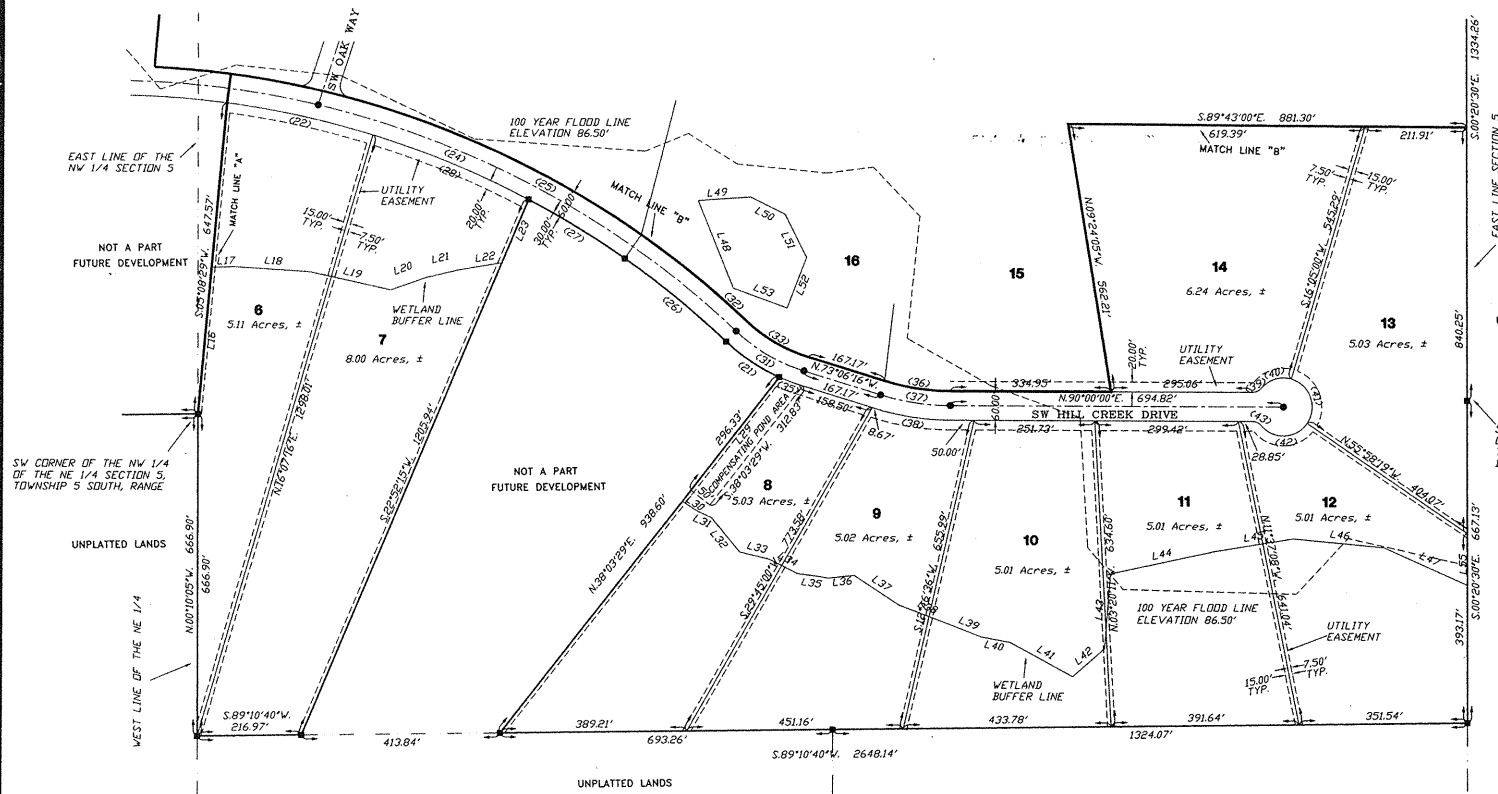
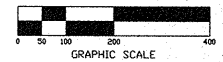
PLAT BOOK 2
PAGES 153
SHEET 4 OF 4

OFFICIAL RECORDS
BOOK PAGE 1229

FILE NUMBER 2004003209
FILED AND RECORDED IN THE OFFICIAL RECORDS
OF COLUMBIA COUNTY, FLORIDA
2/19/2004 BY K. L. S. O'CONNOR
P. DEWITT CASON
CLERK OF COURTS
COLUMBIA COUNTY, FLORIDA
BY: *Marcelle Cason* D.C.

SYMBOL LEGEND
■ PERMANENT REFERENCE MONUMENT
● PERMANENT CONTROL POINT
TYP TYPICAL

SCALE: 1" = 200'



LINE TABLE

Line	Bearing	Distance
L1	S.86°56'42"E.	83.63'
L2	S.14°50'07"E.	67.91'
L3	S.44°31'54"E.	124.23'
L4	S.71°33'53"E.	100.56'
L5	S.88°49'17"E.	60.54'
L6	S.84°21'29"E.	136.43'
L7	N.68°36'10"E.	88.56'
L8	N.80°25'25"E.	149.30'
L9	S.62°39'41"E.	97.31'
L10	N.41°07'05"E.	130.34'
L11	L15 - REMOVED	
L16	N.05°08'29"E.	304.99'
L17	N.88°21'45"E.	48.23'
L18	S.86°25'12"E.	156.91'
L19	S.77°37'43"E.	172.90'
L20	N.70°41'46"E.	76.37'
L21	N.76°23'52"E.	69.44'
L22	N.80°14'40"E.	92.68'
L23	N.22°52'15"E.	143.03'
L24	L28 - REMOVED	
L29	N.38°03'29"E.	325.95'
L30	S.57°59'58"E.	40.54'
L31	S.66°06'07"E.	29.14'
L32	S.39°36'00"E.	92.59'
L33	S.76°26'18"E.	65.32'
L34	S.62°59'09"E.	64.34'
L35	S.82°02'57"E.	67.24'
L36	N.83°11'06"E.	32.07'
L37	S.56°44'53"E.	112.00'
L38	S.69°11'02"E.	112.96'
L39	S.68°50'19"E.	70.82'
L40	S.79°40'48"E.	61.66'
L41	S.61°43'21"E.	148.14'
L42	N.48°45'48"E.	88.16'
L43	N.04°21'41"E.	156.14'
L44	N.77°37'06"E.	22.381'
L45	N.80°32'44"E.	164.23'
L46	S.84°33'52"E.	189.85'
L47	S.66°03'21"E.	190.71'
L48	S.82°03'32"E.	196.30'
L49	S.86°02'22"E.	109.50'
L50	N.63°49'06"E.	79.96'
L51	N.26°43'56"E.	102.24'
L52	N.10°13'53"E.	112.913'
L53	S.70°14'59"E.	119.38'
L54	N.72°50'43"E.	89.78'
L55	N.02°20'30"E.	107.84'

CURVE TABLE

NO.	RADIUS	DELTA	ARC	TANGENT	CHORD	CHORD BEARING
1	25.00'	90°00'00"	39.27'	25.00'	35.36'	N.22°36'21"W.
2	36.00'	61°46'35"	388.15'	215.35'	363.62'	S.36°43'03"E.
3	330.00'	92°38'14"	533.55'	343.55'	477.31'	S.21°17'14"E.
4	36.00'	30°51'39"	193.90'	99.37'	191.57'	S.99°36'04"E.
5	300.00'	08°52'07"	46.44'	23.26'	46.39'	S.20°35'50"W.
6	330.00'	31°57'20"	293.24'	160.79'	269.10'	N.00°56'47"W.
7	300.00'	43°05'14"	225.60'	118.44'	260.33'	S.03°26'30"E.
8	300.00'	90°00'00"	392.7'	25.00'	35.36'	N.67°23'39"E.
9	300.00'	30°00'00"	39.27'	25.00'	35.36'	N.67°23'39"E.
10	300.00'	14°50'06"	77.68'	39.06'	77.46'	S.60°11'18"E.
11	300.00'	77°49'46"	407.37'	242.08'	372.79'	S.13°56'11"E.
12	36.00'	17°02'08"	107.60'	54.60'	107.20'	S.16°58'09"W.
13	36.00'	22°07'47"	139.05'	70.40'	138.18'	S.03°09'28"E.
14	36.00'	12°42'06"	79.81'	40.07'	79.64'	S.20°34'24"E.
15	300.00'	62°01'15"	324.74'	180.33'	309.12'	N.57°56'05"W.
16	330.00'	65°01'15"	357.21'	198.37'	348.03'	N.57°56'05"W.
17	36.00'	11°23'53"	197.49'	101.80'	193.08'	S.06°38'23"E.
18	65.00'	91°34'10"	39.92'	25.69'	35.84'	S.63°52'49"W.
19	300.00'	20°03'42"	80.74'	25.61'	80.58'	N.80°36'06"W.
20	1930.00'	20°03'42"	675.77'	341.38'	672.32'	S.65°14'05"E.
21	390.00'	19°33'46"	133.16'	67.23'	132.51'	N.56°37'25"W.
22	1870.00'	19°32'44"	311.54'	156.13'	311.18'	S.77°57'44"E.
23	1900.00'	11°53'08"	395.25'	198.34'	394.53'	S.82°59'08"E.
24	1900.00'	4°06'10"	1396.18'	71.07'	136.08'	S.67°53'37"E.
25	1900.00'	30°11'02"	1000.94'	512.37'	989.40'	S.61°56'03"E.
26	1870.00'	08°21'42"	272.90'	138.70'	272.66'	N.51°01'23"W.
27	1870.00'	07°12'26"	628.26'	117.71'	623.07'	N.50°48'27"W.
28	1870.00'	10°46'43"	351.79'	176.41'	351.27'	S.67°48'01"E.
29	1870.00'	06°12'26"	285.28'	101.44'	285.39'	N.53°50'24"W.
30	36.00'	30°35'23"	195.25'	98.45'	189.39'	N.59°39'01"W.
31	36.00'	25°15'44"	165.01'	83.98'	163.57'	N.59°38'24"W.
32	1930.00'	26°18'22"	94.63'	47.36'	94.62'	S.48°11'41"E.
33	330.00'	26°15'44"	151.26'	76.98'	149.24'	S.59°38'24"E.
34	1930.00'	04°13'39"	142.39'	71.33'	142.36'	S.80°37'06"E.

CURVE TABLE

NO.	RADIUS	DELTA	ARC	TANGENT	CHORD	CHORD BEARING
35	390.00'	06°41'58"	45.60'	22.83'	45.58'	S.69°45'17"E.
36	470.00'	16°53'44"	138.59'	69.80'	138.09'	N.01°33'08"W.
37	500.00'	16°53'44"	147.44'	74.26'	146.91'	N.01°33'08"W.
38	530.00'	16°53'44"	156.29'	78.71'	155.72'	N.01°33'08"W.
39	60.00'	65°45'47"	68.87'	38.79'	65.15'	N.73°12'06"E.
40	60.00'	105°39'06"	110.64'	79.12'	105.62'	S.86°31'14"W.
41	25.00'	49°40'47"	21.68'	11.57'	21.00'	S.65°09'36"E.
42	25.00'	83°24'03"	36.38'	33.26'	33.26'	S.93°42'49"W.
43	25.00'	88°25'30"	39.59'	24.32'	34.87'	N.26°07'11"W.
44	300.00'	20°30'12"	107.25'	54.26'	106.78'	N.80°32'44"E.
45	330.00'	20°30'12"	118.09'	59.68'	117.46'	N.80°35'22"W.
46	360.00'	20°30'12"	128.83'	65.11'	128.14'	N.80°35'12"W.
47	60.00'	107°52'59"	111.93'	80.91'	96.39'	N.65°23'59"E.
48	60.00'	110°55'59"	116.16'	87.18'	98.85'	N.23°30'20"W.
49	300.00'	23°12'48"	121.54'	61.62'	120.71'	S.79°12'45"E.
50	900.00'	39°27'	392.7'	25.00'	392.7'	S.22°36'21"E.
51	330.00'	22°18'13"	128.46'	65.05'	127.65'	S.79°40'02"E.
52	270.00'	21°59'03"	103.60'	52.44'	102.96'	S.79°30'27"E.
53	60.00'	61°32'56"	64.45'	35.73'	61.40'	S.70°15'23"W.
54	25.00'	49°40'47"	21.68'	11.57'	21.00'	S.64°19'18"W.
55	300.00'	26°55'45"	141.00'	71.83'	139.71'	N.31°33'37"E.
56	300.00'	26°55'45"	155.10'	79.01'	153.68'	N.31°33'37"E.
57	360.00'	26°55'45"	165.20'	86.19'	167.85'	N.31°33'37"E.
58	25.00'	49°40'47"	21.68'	11.57'	21.00'	N.69°51'53"E.
59	60.00'	125°22'59"	131.29'	116.19'	125.62'	N.32°01'01"E.
60	60.00'	66°46'27"	69.93'	35.44'	69.93'	N.64°03'25"E.
61	60.00'	87°12'36"	91.33'	57.15'	92.76'	S.38°57'00"W.
62	25.00'	49°40'47"	21.68'	11.57'	21.00'	N.64°03'25"E.
63	60.00'	62°01'15"	364.74'	180.33'	309.12'	S.57°56'05"W.
64	1930.00'	20°03'42"	208.18'	104.62'	208.18'	N.53°50'24"W.
65	270.00'	15°01'36"	70.81'	35.61'	70.61'	S.76°01'44"E.
66	270.00'	06°57'27"	32.79'	16.41'	32.77'	S.87°01'15"E.

FLOOD NOTICE:

THE FOLLOWING LOTS ARE AFFECTED BY
THE 100 YEAR FLOOD ELEVATION
THE 100 YEAR FLOOD ELEVATION IS 86.50 FEET FOR
LOTS 6, 7, 8, 9, 10, 11, 12, 13, 14, 15, AND 16.
THE 100 YEAR FLOOD ELEVATION IS 108.50 FEET FOR
LOTS 27 AND 28
THE 100 YEAR FLOOD ELEVATION IS 105.50 FEET FOR
LOTS 22 AND 23



BRITT SURVEYING

LAND SURVEYORS AND MAPPERS

1426 WEST DUVAL STREET
LAKE CITY, FLORIDA 32055

TELEPHONE: (386) 752-7163 FAX: (386) 752-5973 WORK ORDER # L-12564