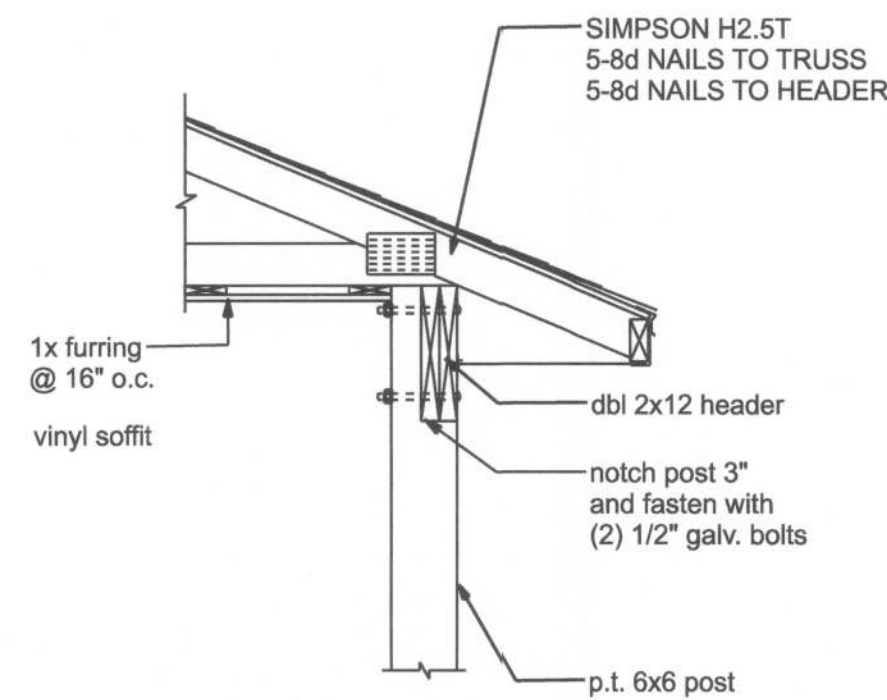
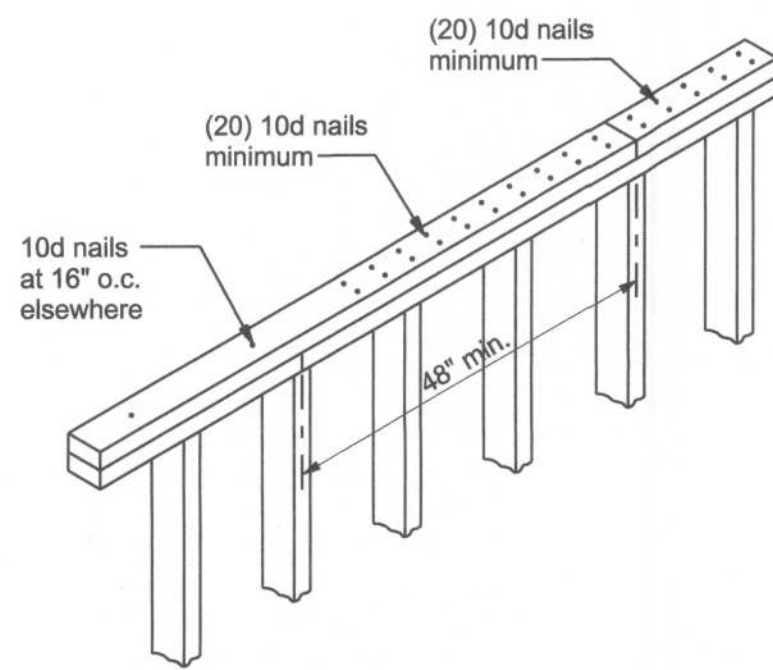


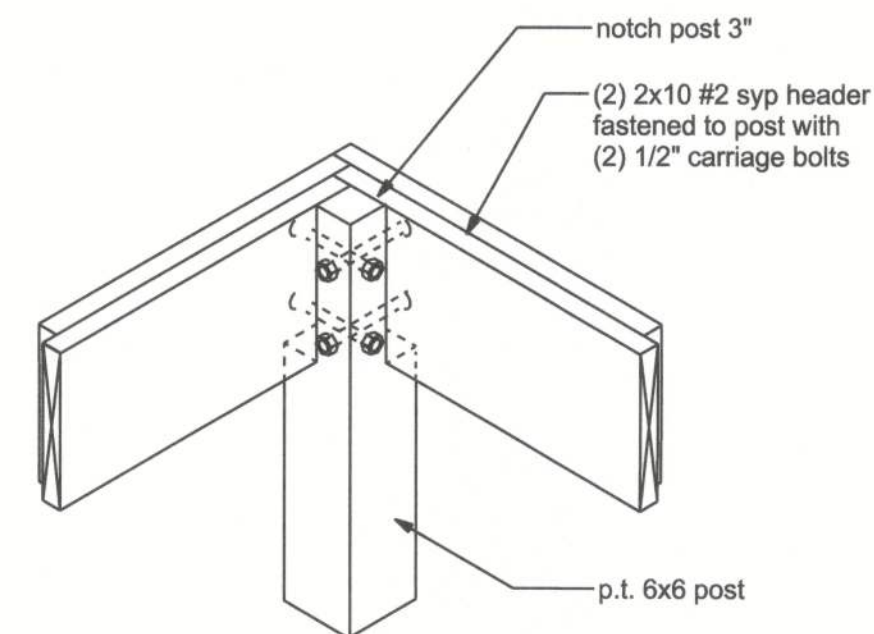
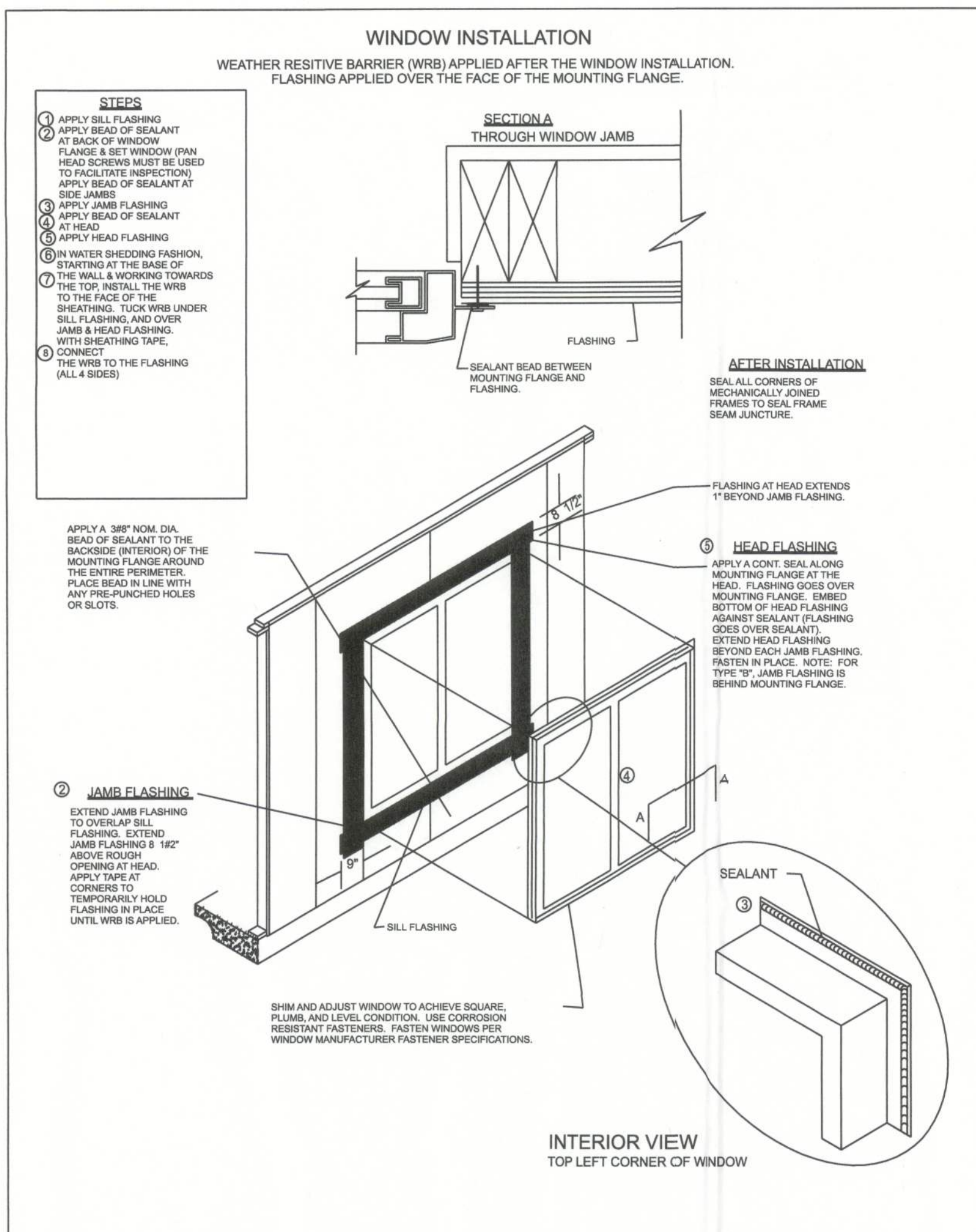
**TYPICAL WALL SECTION**  
SCALE: 3/4" = 1'-0"



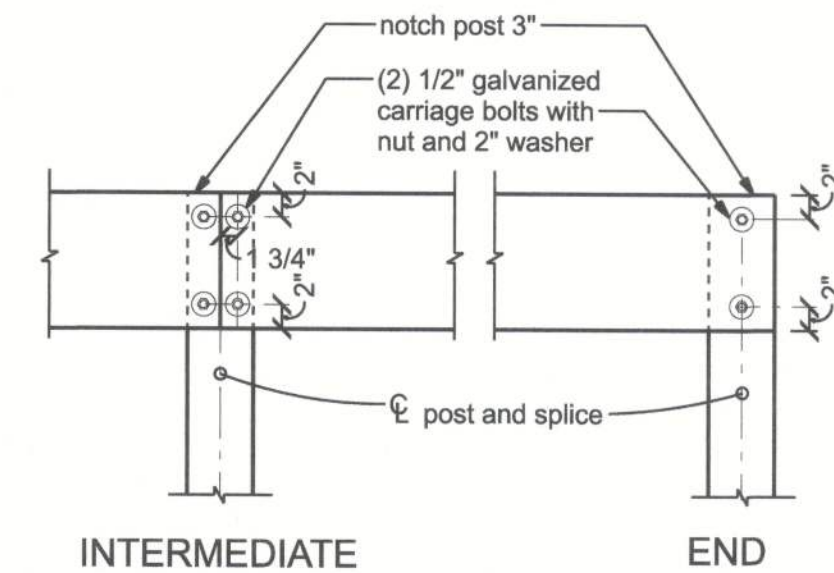
**PORCH SECTION**  
SCALE: 3/4" = 1'-0"



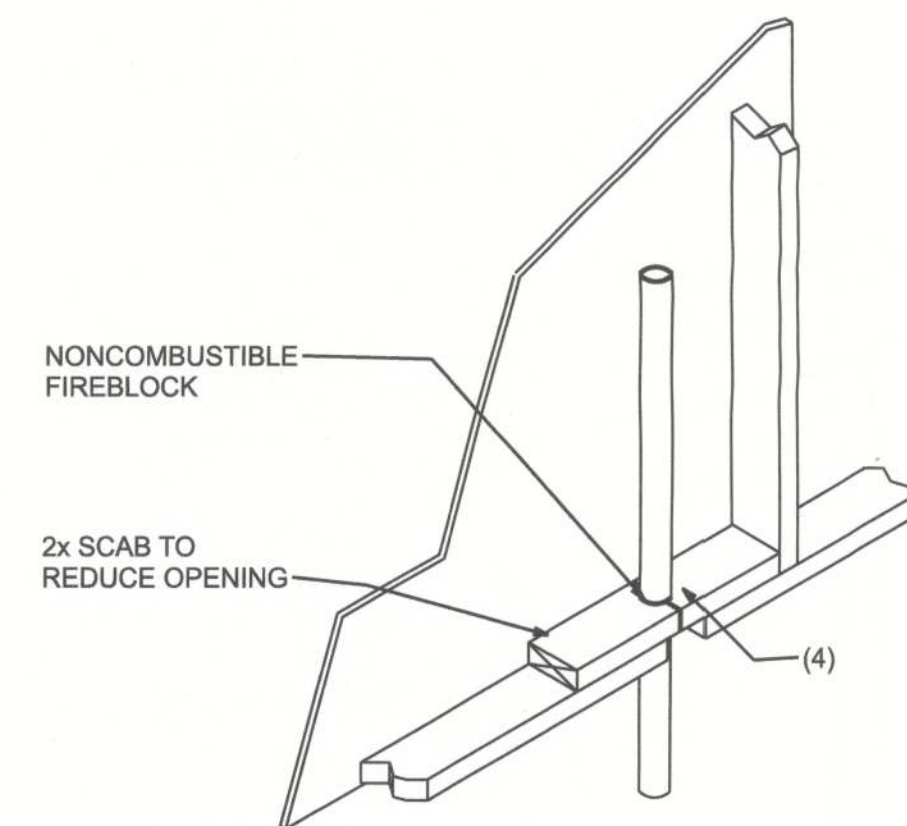
**TOP PLATE SPLICE DETAILS**  
SCALE: 1/2" = 1'-0"



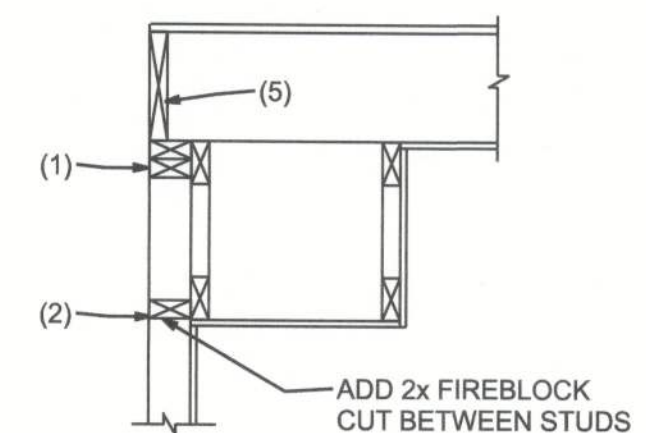
**CORNER POST**  
@ REAR PORCH NTS



**BEAM TO POST**  
SCALE: 3/4" = 1'-0"



**PENETRATIONS**



**SOFFIT/DROPPED CLG.**

**FIREBLOCKING NOTES:**

- FIREBLOCKING SHALL BE INSTALLED IN WOOD FRAME CONSTRUCTION IN THE FOLLOWING LOCATIONS:
1. IN CONCEALED SPACES OF STUD WALLS AND PARTITIONS INCLUDING FURRED SPACES AT CEILING AND FLOOR LEVELS.
  2. AT ALL INTERCONNECTIONS BETWEEN CONCEALED VERTICAL AND HORIZONTAL SPACES SUCH AS OCCUR AT SOFFITS, DROP CEILINGS, COVE CEILINGS, ETC.
  3. IN CONCEALED SPACES BETWEEN STAIR STRINGERS AT THE TOP AND BOTTOM OF THE RUN.
  4. AT OPENINGS AROUND VENTS, PIPES, DUCTS, CHIMNEYS AND FIREPLACES AT CEILING AND FLOOR LEVELS WITH PYRO PANEL MULTIFLEX SEALANT
  5. AT ALL INTERCONNECTIONS BETWEEN CONCEALED VERTICAL STUD WALL OR PARTITION SPACES AND CONCEALED SPACES CREATED BY AN ASSEMBLY OF FLOOR JOISTS, FIREBLOCKING SHALL BE PROVIDED FOR THE FULL DEPTH OF THE JOISTS AT THE ENDS AND OVER THE SUPPORTS.



**BEADLE RESIDENCE**  
**FRAMING DETAILS**

P.O. BOX 3271  
ST. AUGUSTINE, FL. 32085  
(386) 965-0644  
C.O.A. # 33289



DATE 4/07/24	DRAWN BY W.H.F.
	APPROVED W.H.F.
REVISIONS	
SHEET A-8	OF 9
PROJECT NO. 24.R009	